



MICRO LOG

Company John O. Farmer, Inc.  
Well Lawson D #1

Field Norton  
County Norton

State KS

Location: 1815 FSL & 1815 FEL  
API #: 15 137 20679

Other Services  
DIL  
CDNL

Elevation 2414'

SEC 36 TWP 3S RGE 24W  
Ground Level Elevation 2414'

Permanent Datum KB 5 AGL  
Log Measured From KB  
Drilling Measured From KB

Date 12-6-13

Run Number Two  
Depth Driller 3820'

Depth Logger 3809'

Bottom Logged Interval 3250'

Top Log Interval 3250'

Casing Driller 288'

Casing Logger 288'

Bit Size 7 7/8"

Type Fluid in Hole Chemical Mud

Density / Viscosity 8.8/60

pH / Fluid Loss 11.5/5.4

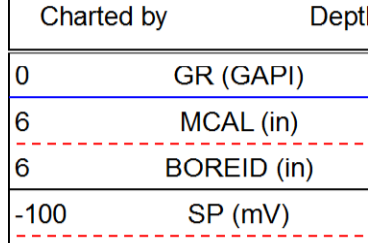
Source of Sample Pit  
Rm @ Meas Temp 2.8@70degf  
Rmt @ Meas Temp 2.1@70degf  
Rmc @ Meas Temp 3.3@70degf  
Source of Rmt / Rmc Calculated  
Rm @ BHI 1.6@911degf  
Time Circulation Stopped 4:30 p.m.  
Time Logger on Bottom 8:30 p.m.  
Maximum Recorded Temperature 116 degf  
Equipment Number T127  
Location Hays, KS  
Recorded By L. Smith  
Witnessed By Mr. Austin Klaus

<<< Fold Here >>>

All interpretations are opinions based on inferences from electrical or other measurements and we cannot and do not guarantee the accuracy or correctness of any interpretation, and we shall not, except in the case of gross or willful negligence on our part, be liable or responsible for any loss, costs, damages, or expenses incurred or sustained by anyone resulting from any interpretation made by any of our officers, agents or employees. These interpretations are also subject to our general terms and conditions set out in our current Price Schedule.

Comments

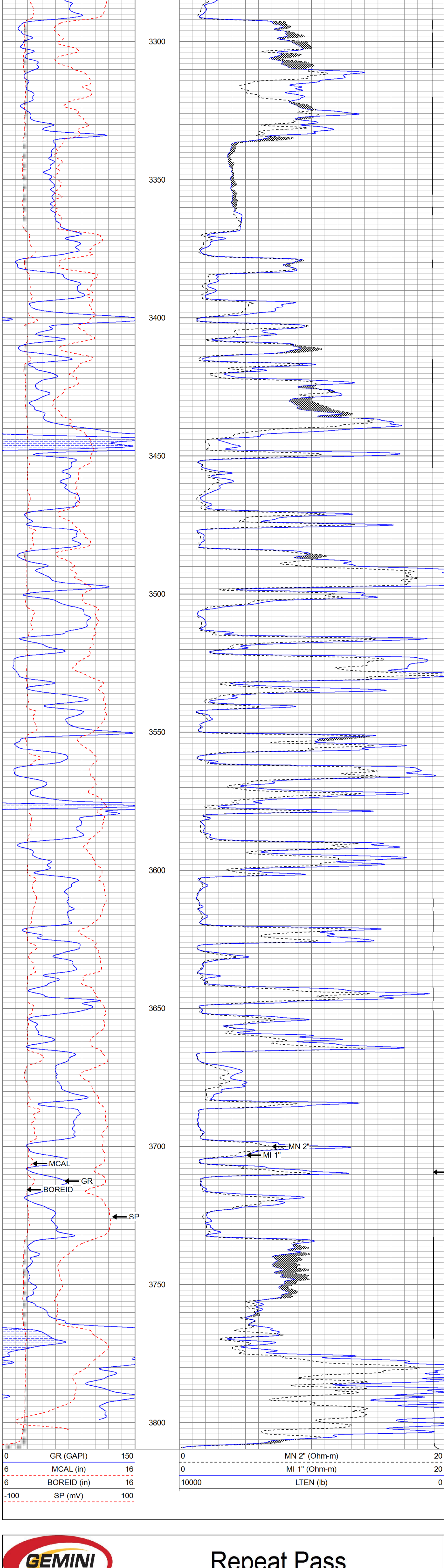
Thank you for using Gemini Wireline  
785-625-1182



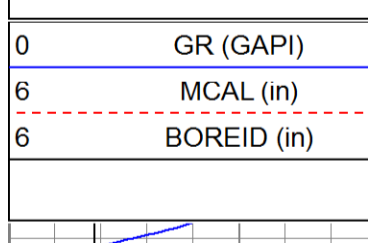
# Main Pass

Database File joflawsond#10h.db  
Dataset Pathname pass4  
Presentation Format kml  
Dataset Creation Fri Dec 06 20:36:17 2013  
Charted by Depth in Feet scaled 1:240

|      |             |     |       |               |    |
|------|-------------|-----|-------|---------------|----|
| 0    | GR (GAPI)   | 150 | 0     | MN 2" (Ohm-m) | 20 |
| 6    | MCAL (in)   | 16  | 0     | MI 1" (Ohm-m) | 20 |
| 6    | BOREID (in) | 16  | 10000 | LTEN (lb)     | 0  |
| -100 | SP (mV)     | 100 |       |               |    |



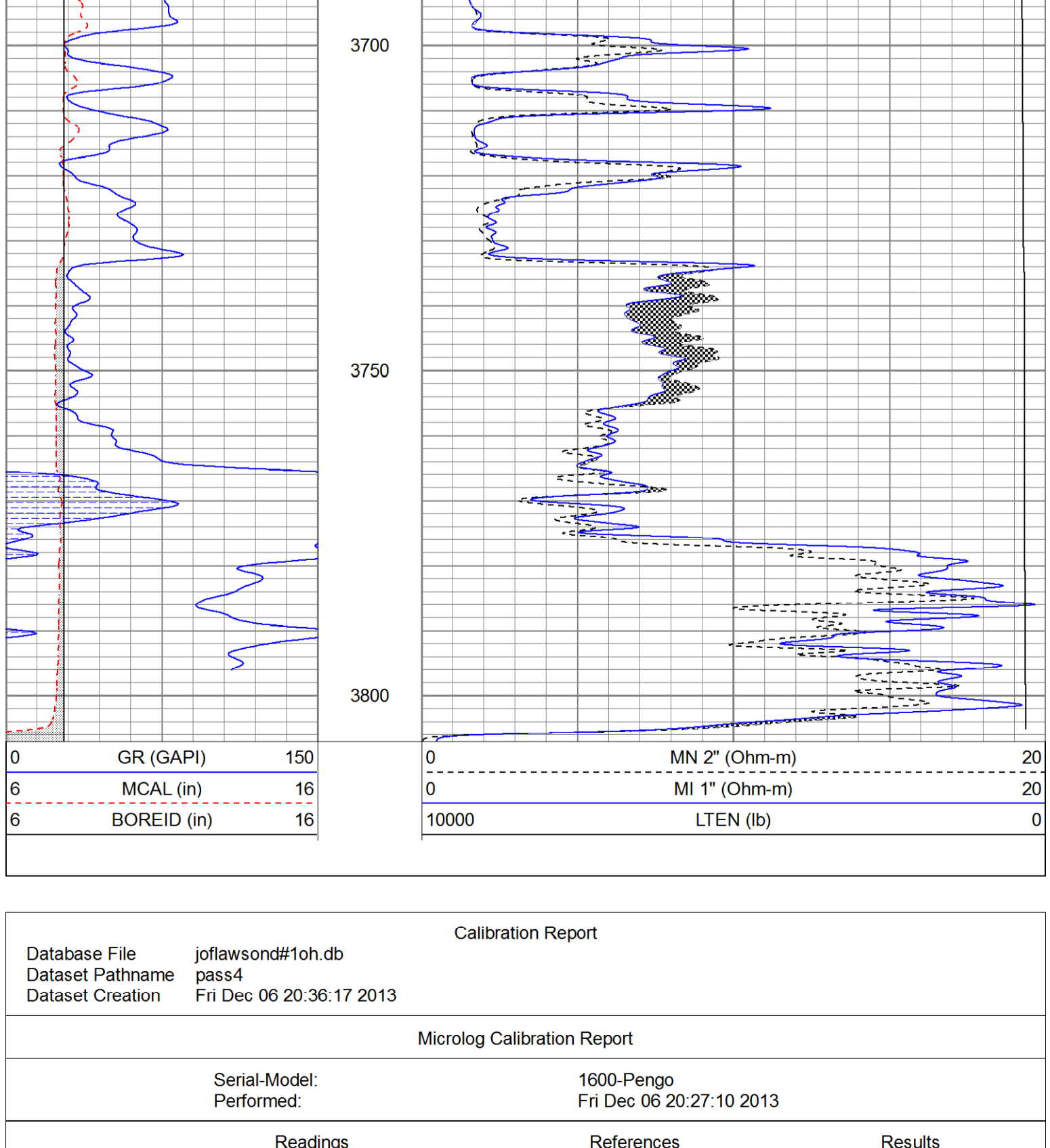
|      |             |     |       |               |    |
|------|-------------|-----|-------|---------------|----|
| 0    | GR (GAPI)   | 150 | 0     | MN 2" (Ohm-m) | 20 |
| 6    | MCAL (in)   | 16  | 0     | MI 1" (Ohm-m) | 20 |
| 6    | BOREID (in) | 16  | 10000 | LTEN (lb)     | 0  |
| -100 | SP (mV)     | 100 |       |               |    |



# Repeat Pass

Database File joflawsond#10h.db  
Dataset Pathname pass3.1  
Presentation Format kml  
Dataset Creation Fri Dec 06 20:40:37 2013  
Charted by Depth in Feet scaled 1:240

|      |             |     |       |               |    |
|------|-------------|-----|-------|---------------|----|
| 0    | GR (GAPI)   | 150 | 0     | MN 2" (Ohm-m) | 20 |
| 6    | MCAL (in)   | 16  | 0     | MI 1" (Ohm-m) | 20 |
| 6    | BOREID (in) | 16  | 10000 | LTEN (lb)     | 0  |
| -100 | SP (mV)     | 100 |       |               |    |



|      |             |     |       |               |    |
|------|-------------|-----|-------|---------------|----|
| 0    | GR (GAPI)   | 150 | 0     | MN 2" (Ohm-m) | 20 |
| 6    | MCAL (in)   | 16  | 0     | MI 1" (Ohm-m) | 20 |
| 6    | BOREID (in) | 16  | 10000 | LTEN (lb)     | 0  |
| -100 | SP (mV)     | 100 |       |               |    |

Calibration Report

Database File joflawsond#10h.db  
Dataset Pathname pass4  
Dataset Creation Fri Dec 06 20:36:17 2013

Microlog Calibration Report

|               |          |                          |            |        |         |       |         |        |
|---------------|----------|--------------------------|------------|--------|---------|-------|---------|--------|
| Serial-Model: |          | 1600-Pengo               |            |        |         |       |         |        |
| Performed:    |          | Fri Dec 06 20:27:10 2013 |            |        |         |       |         |        |
|               | Readings |                          | References |        | Results |       |         |        |
|               | Zero     | Cal                      | Zero       | Cal    | m       | b     |         |        |
| Normal        | -0.0031  | 0.5882                   | V          | 0.0000 | 10.0000 | Ohm-m | 16.9142 | 0.0518 |
| Inverse       | 0.0002   | 0.7636                   | V          | 0.3000 | 9.2000  | Ohm-m | 11.6596 | 0.2973 |
| Caliper       | 1.0301   | 2.2816                   | V          | 7.8000 | 13.0000 | in    | 4.1552  | 3.5196 |

Gamma Ray Calibration Report

|                     |                          |
|---------------------|--------------------------|
| Serial Number:      | 2000                     |
| Tool Model:         | P2000                    |
| Performed:          | Fri Nov 01 23:01:15 2013 |
| Calibrator Value:   | 1.0 GAPI                 |
| Background Reading: | 0.0 cps                  |
| Calibrator Reading: | 0.0 cps                  |
| Sensitivity:        | 0.2200 GAPI/cps          |

| Sensor | Offset (ft) | Schematic | Description     | Length (ft) | O.D. (in) | Weight (lb) |
|--------|-------------|-----------|-----------------|-------------|-----------|-------------|
| GR     | 8.38        |           | GR-P2000 (2000) | 3.67        | 3.25      | 40.00       |
| MCAL   | 1.30        |           | ML-Pengo (1600) | 6.97        | 3.50      | 100.00      |
| MI     | 1.30        |           |                 |             |           |             |
| MN     | 1.30        |           |                 |             |           |             |

Dataset: joflawsond#10h.db: field/well/run1/pass4  
Total length: 10.63 ft  
Total weight: 140.00 lb  
O.D.: 3.50 in