



Temp.
Log

Company John O. Farmer, Inc.
Well Lawson D #1
Field Norton
County Norton
State Kansas

Company John O. Farmer, Inc.
Well Lawson D #1
Field Norton
County Norton
State Kansas

Location: 1815' FSL & 1815' FEL
API #: 15 137 20679
Other Services
SEC 36 TWP 3S RGE 24W
Permanent Datum Ground Level Elevation 2414'
Log Measured From K.B 5' AGL
Drilling Measured From K.B
Elevation
K.B. 2419'
D.F. 2418'
G.L. 2414'

Date	12-19-13						
Run Number	ONE						
Depth Driller	3820'						
Depth Logger	////						
Bottom Logged Interval	2100'						
Top Log Interval	0						
Open Hole Size	7 7/8"						
Type Fluid	Water						
Density / Viscosity	////						
Max. Recorded Temp.	89.52 F						
Estimated Cement Top	////						
Time Well Ready	8:00 A.M						
Time Logger on Bottom	9:00 A.M						
Equipment Number	T-440						
Location	Hays, KS						
Recorded By	Casey Patterson						
Witnessed By	Mr. Duane Eichman						
Borehole Record		Tubing Record					
Run Number	Bit	From	To	Size	Weight	From	To
Casing Record				Size	Wgt/Ft	Top	Bottom
Surface String							
Prot. String							
Production String							
Liner							

<<< Fold Here >>>

All interpretations are opinions based on inferences from electrical or other measurements and we cannot and do not guarantee the accuracy or correctness of any interpretation, and we shall not, except in the case of gross or willful negligence on our part, be liable or responsible for any loss, costs, damages, or expenses incurred or sustained by anyone resulting from any interpretation made by any of our officers, agents or employees. These interpretations are also subject to our general terms and conditions set out in our current Price Schedule.

Comments

Database File: joflawsond1temp.db
 Dataset Pathname: pass1
 Presentation Format: temp
 Dataset Creation: Thu Dec 19 08:18:44 2013 by Log Open-Cased 071220
 Charted by: Depth in Feet scaled 1:600

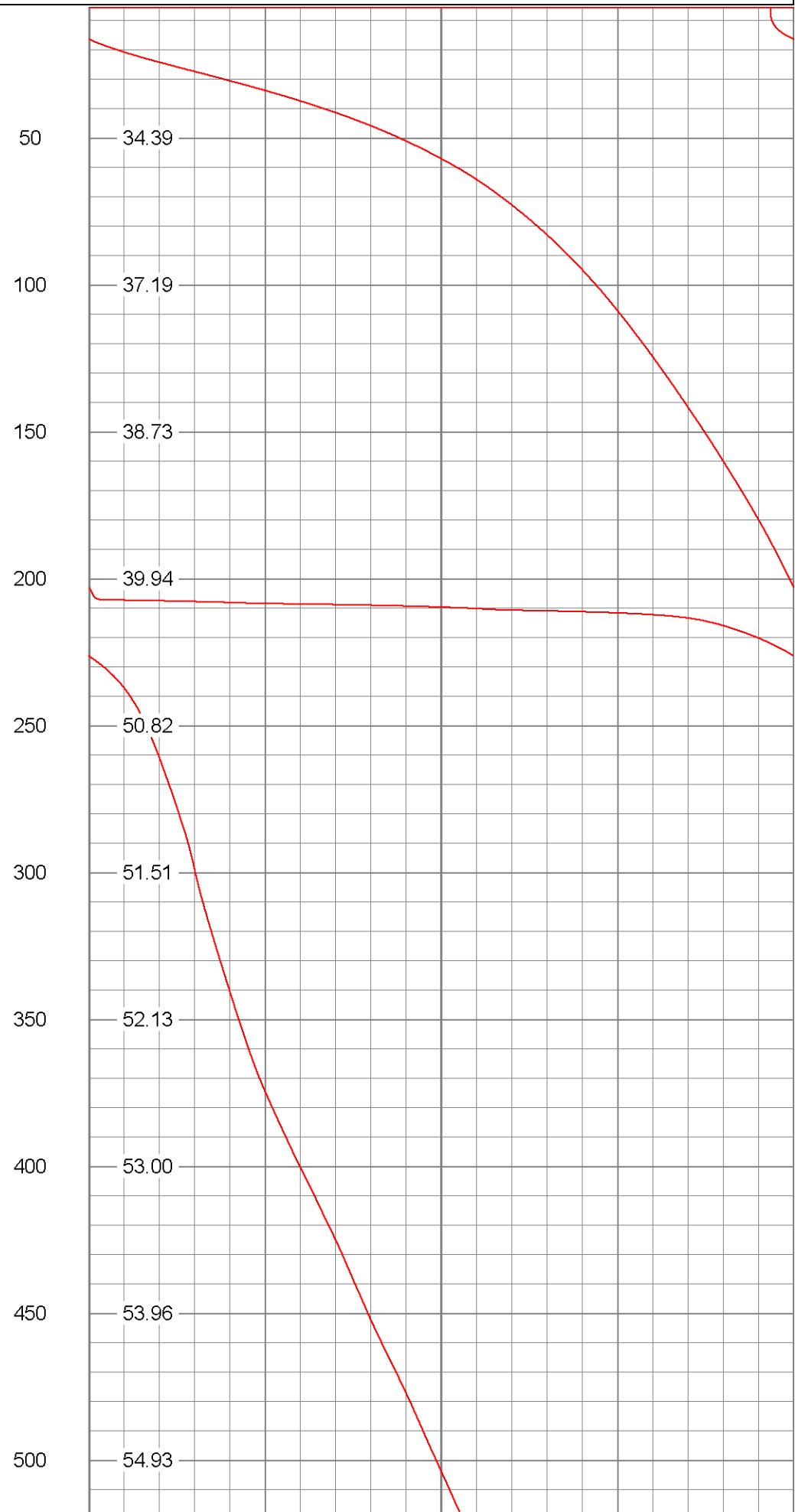
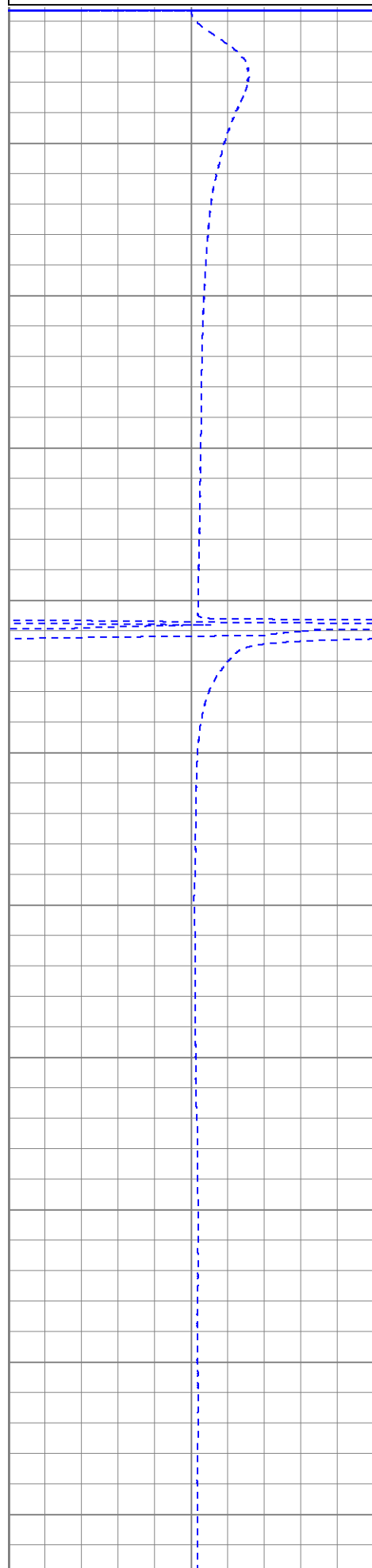
-0.5 DTMP (degF) 0.5

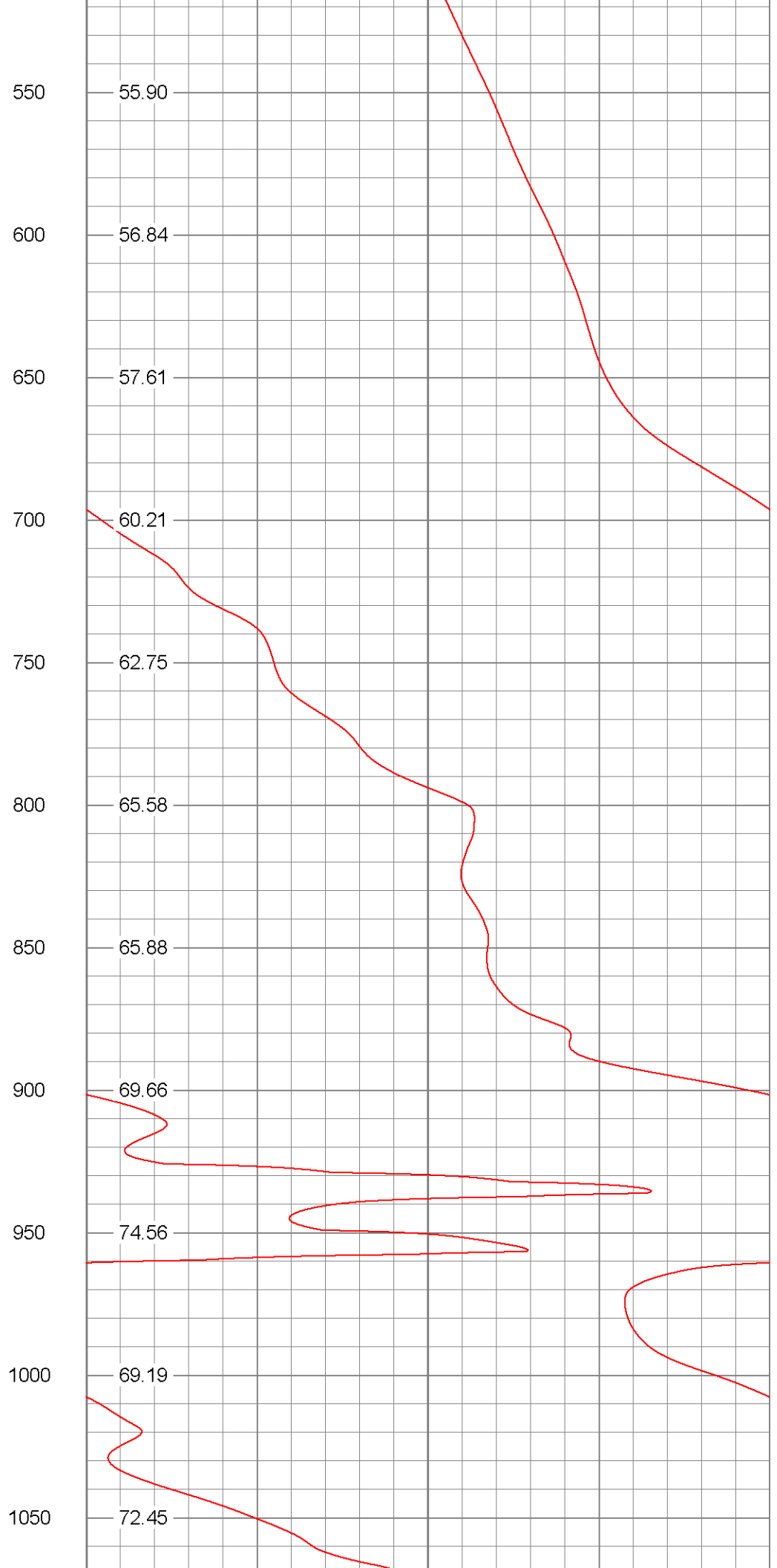
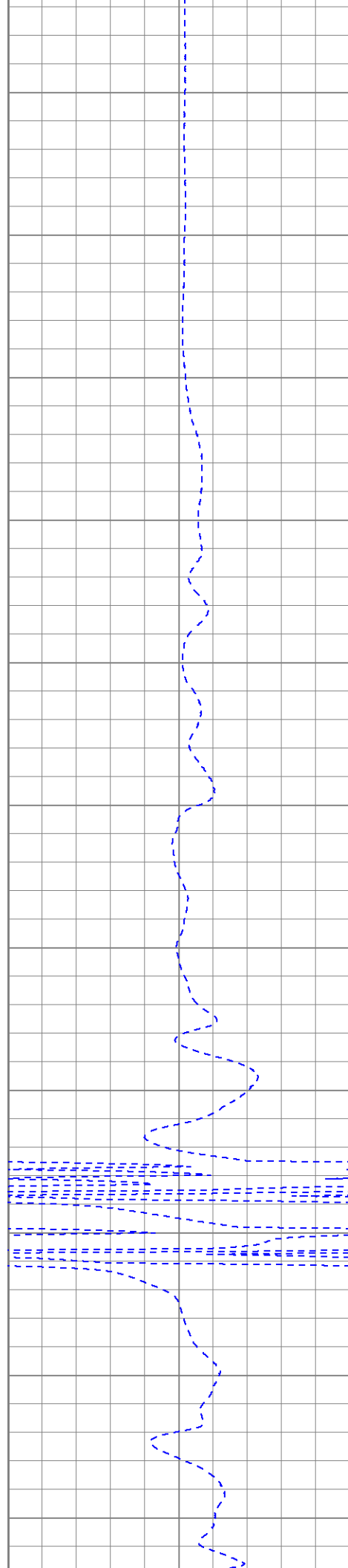
50

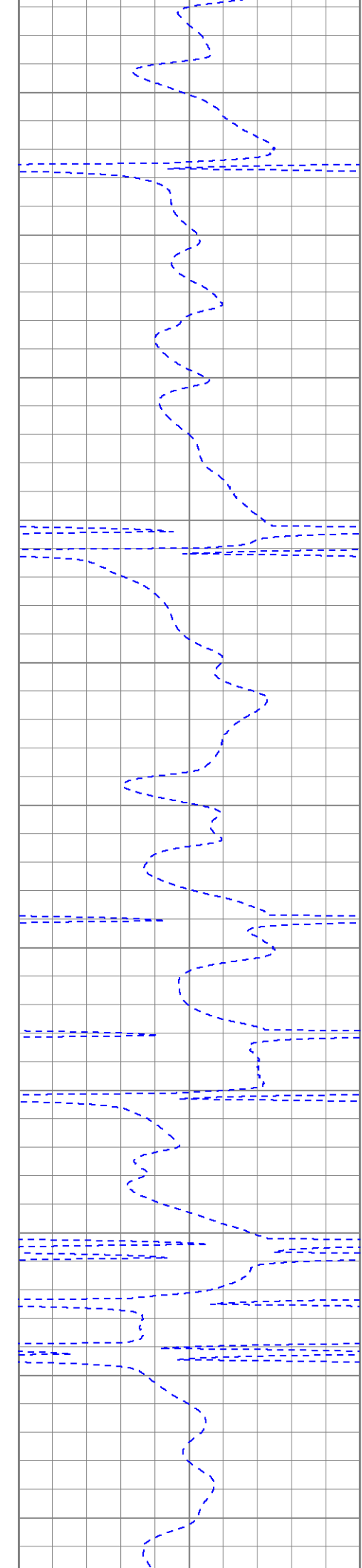
TEMP (degF)

60

TEMP
(degF)







1100 73.82

1150 73.59

1200 73.06

1250 75.11

1300 73.64

1350 77.10

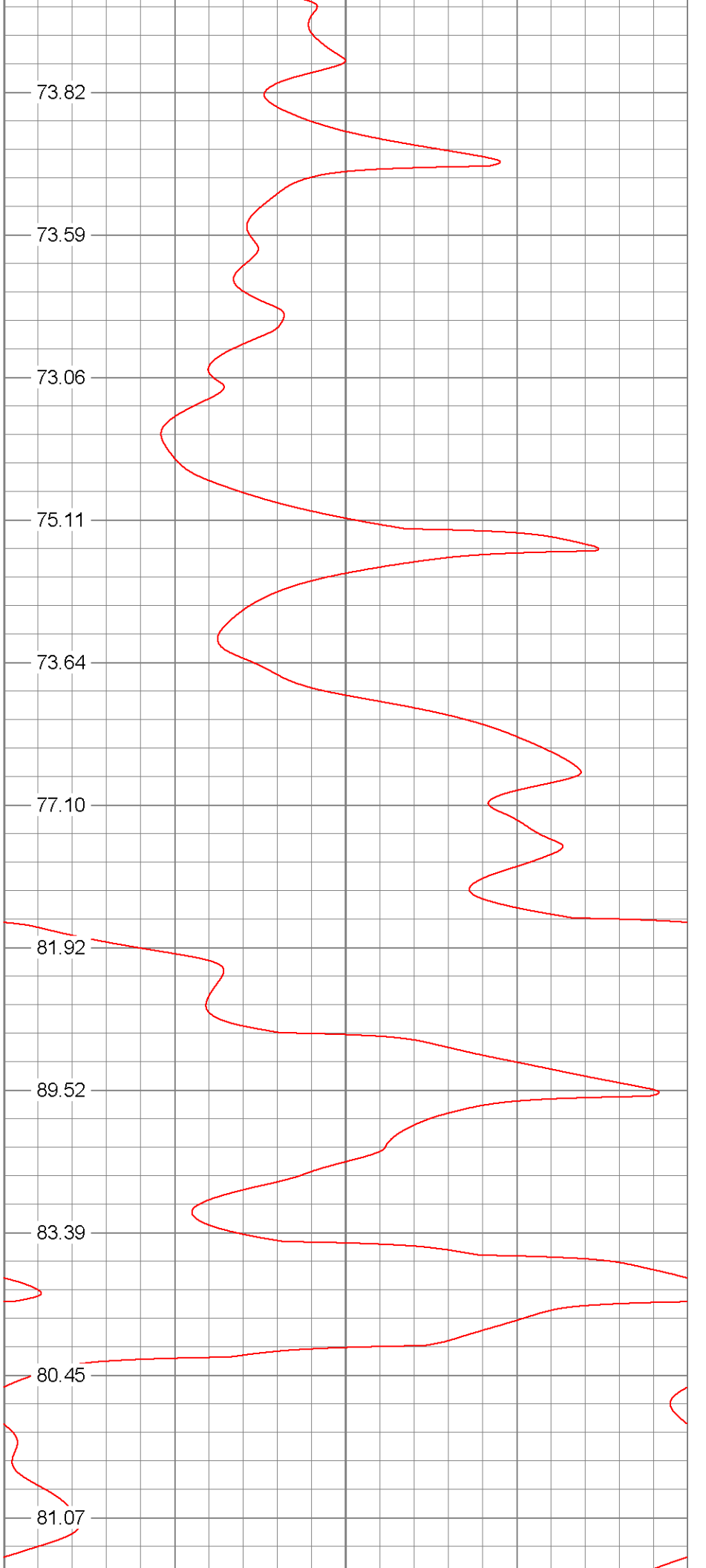
1400 81.92

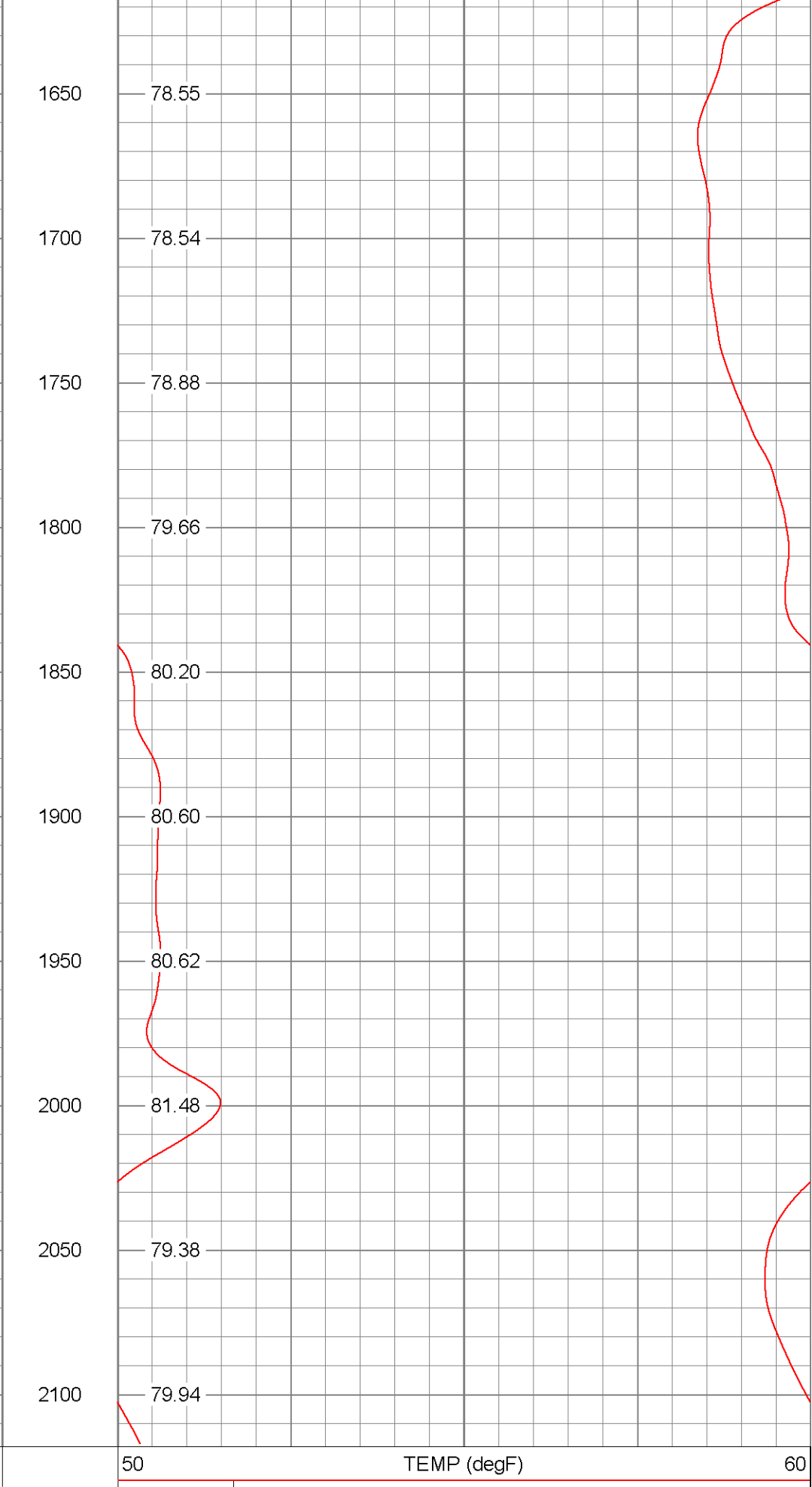
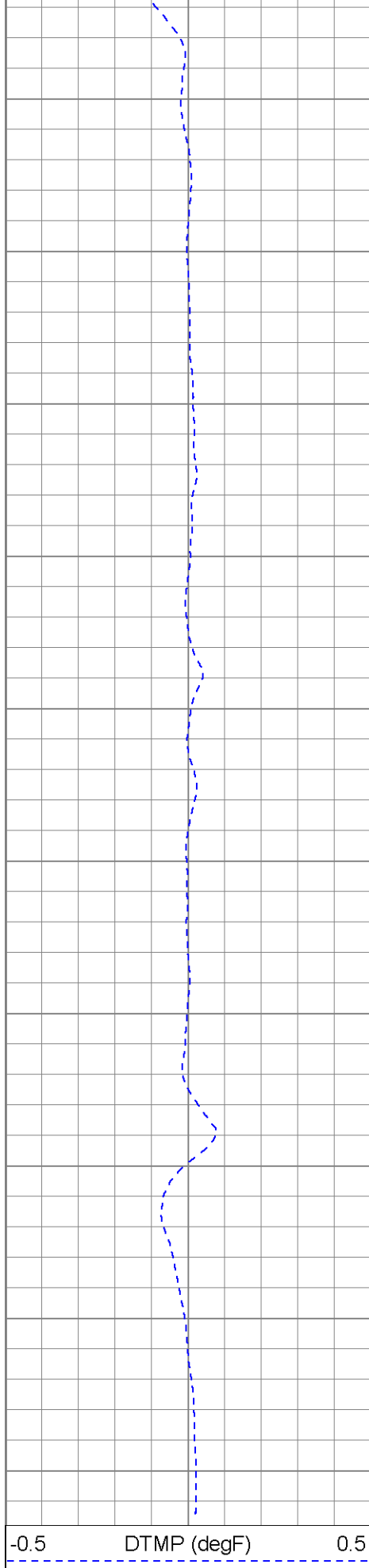
1450 89.52

1500 83.39

1550 80.45

1600 81.07





-0.5 DTMP (degF) 0.5

50 TEMP (degF) 60

TEMP (degF)

Calibration Report

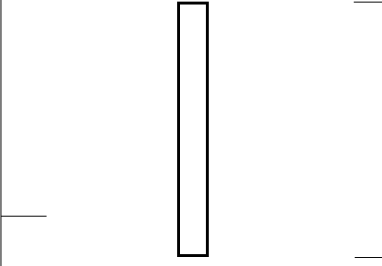
Database File: joflawsond1temp.db
 Dataset Pathname: pass1
 Dataset Creation: Thu Dec 19 08:18:44 2013 by Log Open-Cased 071220

Temperature Calibration Report

Serial Number: 1
 Tool Model: C
 Performed: Thu Mar 11 09:49:24 2004

	Reference	Reading
Low Reference:	56.00 degF	590.26 cps
High Reference:	163.00 degF	1683.31cps

Gain: 0.10
 Offset: -1.78
 Delta Spacing: 2

Sensor	Offset (ft)	Schematic	Description	Len (ft)	OD (in)	Wt (lb)
TEMP	0.20		TEMP-C (1)	1.25	1.83	2.00

Dataset: joflawsond1temp.db: field/well/run1/pass1
 Total Length: 1.25 ft
 Total Weight: 2.00 lb
 O.D.: 1.83 in