



**COMPLETION
& PRODUCTION
SERVICES CO.**

**SONIC
LOG**

Company MULL DRILLING COMPANY, INC.
Well #1-2 FRANCE
Field WILDCAT
County SCOTT
State KANSAS

Company MULL DRILLING COMPANY, INC.
Well #1-2 FRANCE
Field WILDCAT
County SCOTT State KANSAS

Location: API #: 15-171-21001-0000
2492' FNL & 2651' FWL
SEC 2 TWP 17S RGE 32W
Permanent Datum GROUND LEVEL Elevation 2976
Log Measured From KELLY BUSHING 5' A.G.L.
Drilling Measured From KELLY BUSHING
Other Services
CDL/CNL/PE
DIL/MEL
Elevation
K.B. 2981
D.F. 2879
G.L. 2976

Date	12/5/13
Run Number	TWO
Depth Driller	4700
Depth Logger	4704
Bottom Logged Interval	4692
Top Log Interval	200
Casing Driller	8 5/8"@245'
Casing Logger	245
Bit Size	7 7/8"
Type Fluid in Hole	CHEMICAL MUD
Density / Viscosity	9.2/56
pH / Fluid Loss	8.5/6.2
Source of Sample	FLOWLINE
Rim @ Meas. Temp	.950@70F
Rmf @ Meas. Temp	.713@70F
Rmc @ Meas. Temp	1.14@70F
Source of Rmf / Rmc	MEASUREMENT
Rim @ BHT	.545@122F
Time Circulation Stopped	5 HOURS
Time Logger on Bottom	2:30 A.M.
Maximum Recorded Temperature	122F
Equipment Number	4854
Location	HAYS, KANSAS
Recorded By	JEFF LUEBBERS
Witnessed By	KEVIN KESSLER

<<< Fold Here >>>

All interpretations are opinions based on inferences from electrical or other measurements and we cannot and do not guarantee the accuracy or correctness of any interpretation, and we shall not, except in the case of gross or willful negligence on our part, be liable or responsible for any loss, costs, damages, or expenses incurred or sustained by anyone resulting from any interpretation made by any of our officers, agents or employees. These interpretations are also subject to our general terms and conditions set out in our current Price Schedule.

Comments

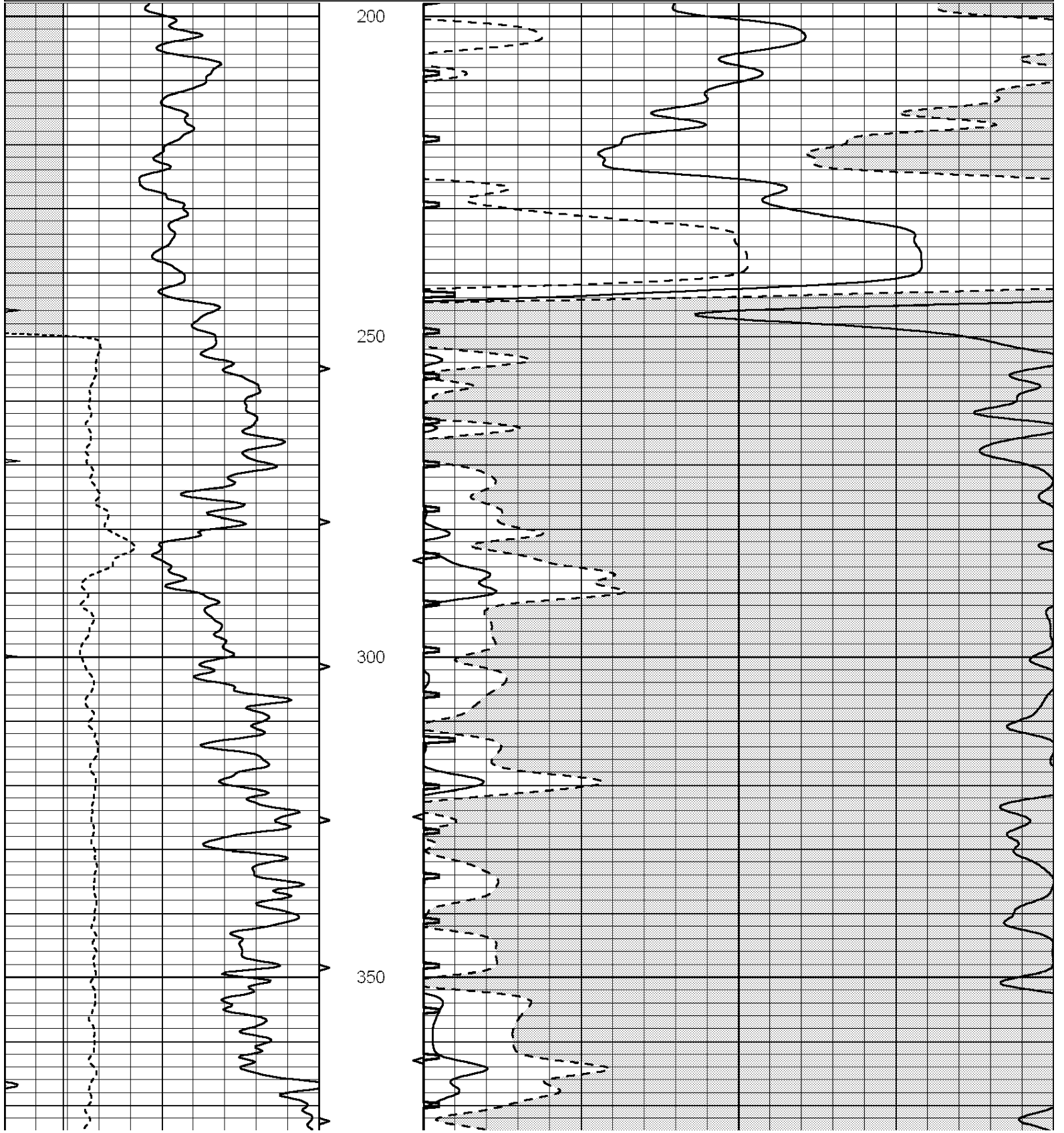
THANK YOU FOR USING "NABORS" HAYS, KANSAS 785-628-6395
DIRECTIONS
HEALY, KS. 12W. ON HWY 4 TO "PAWNEE RD.", 1/2N., 1/2E. INTO

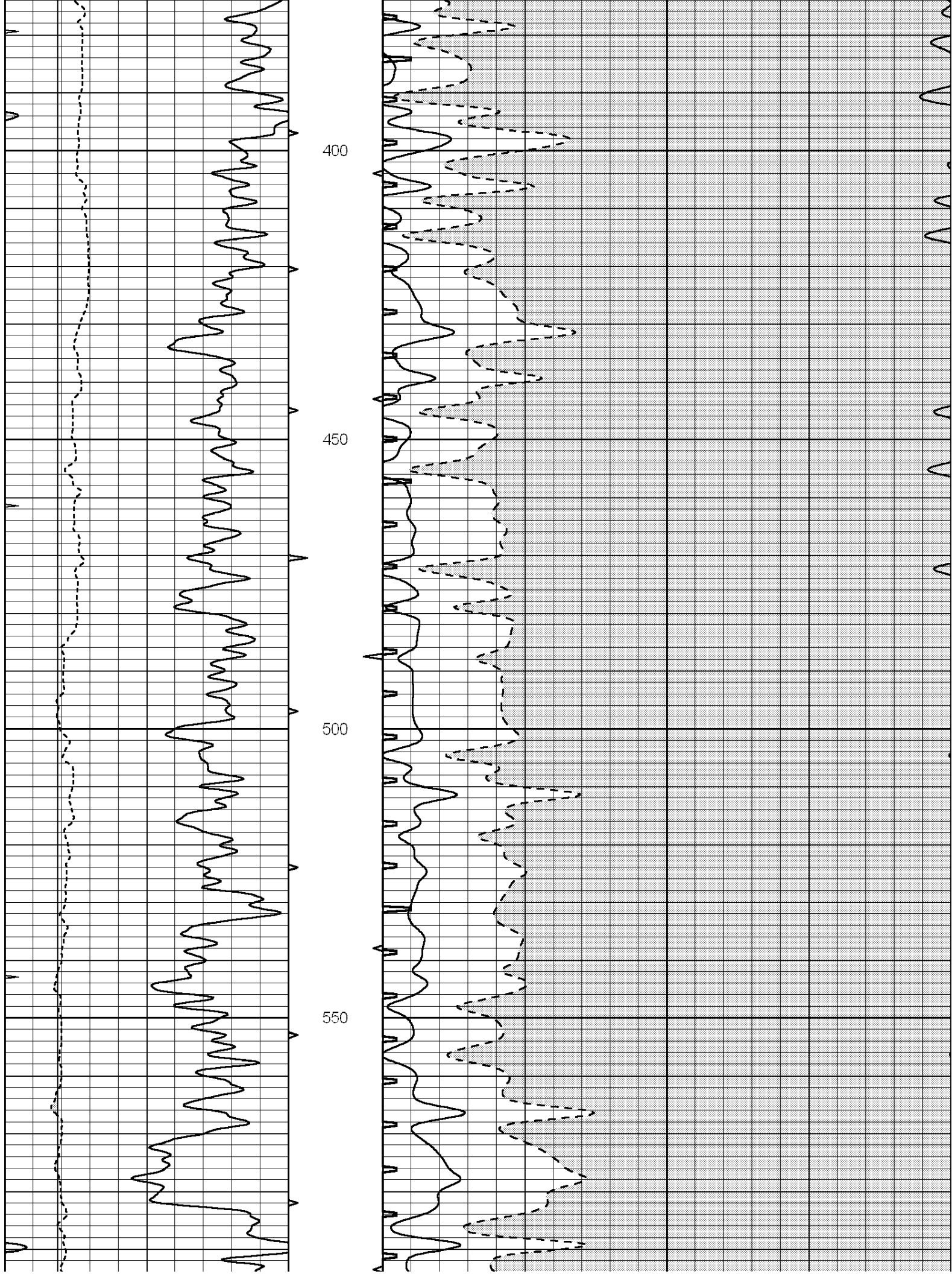


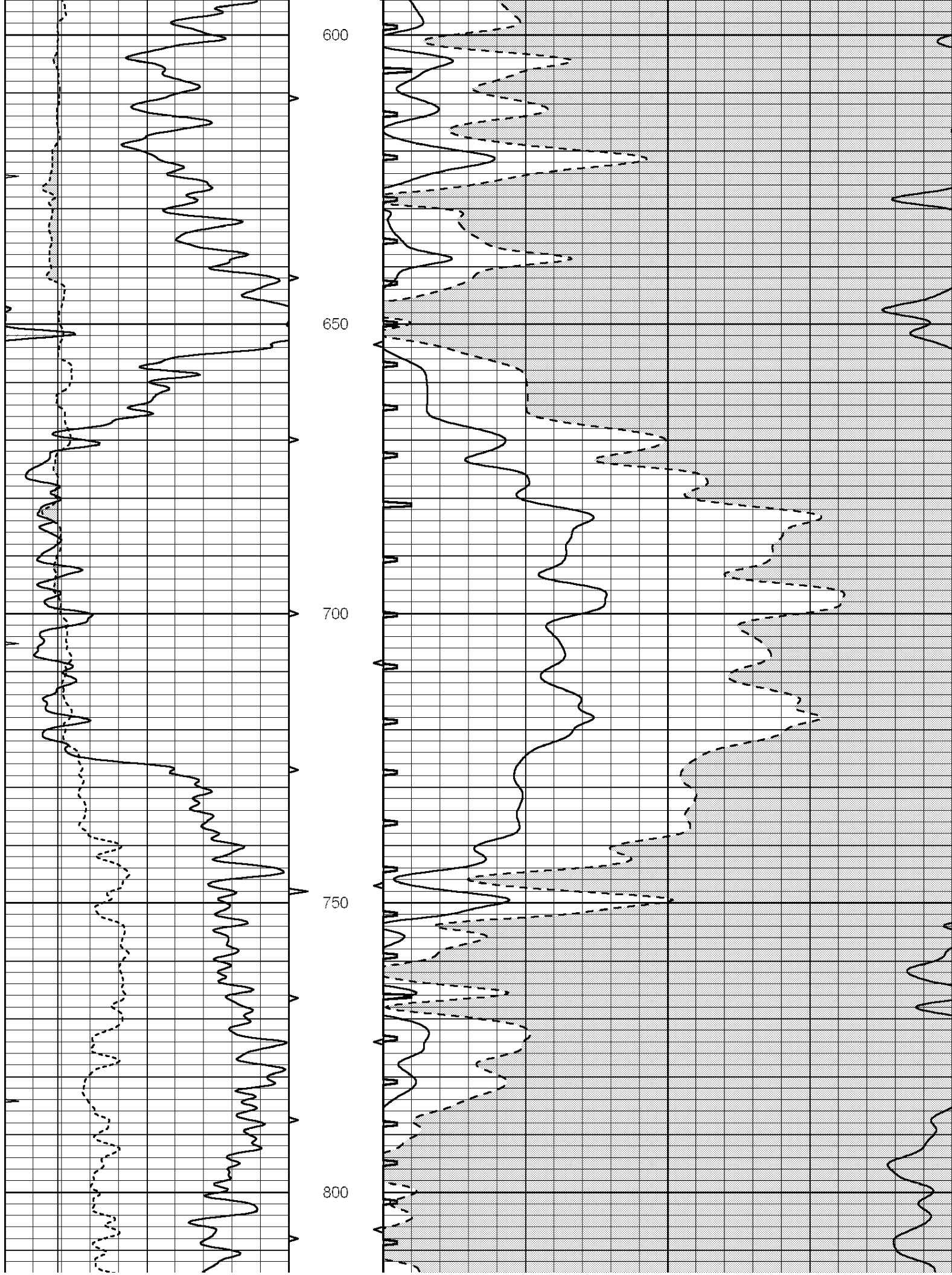
MAIN SECTION

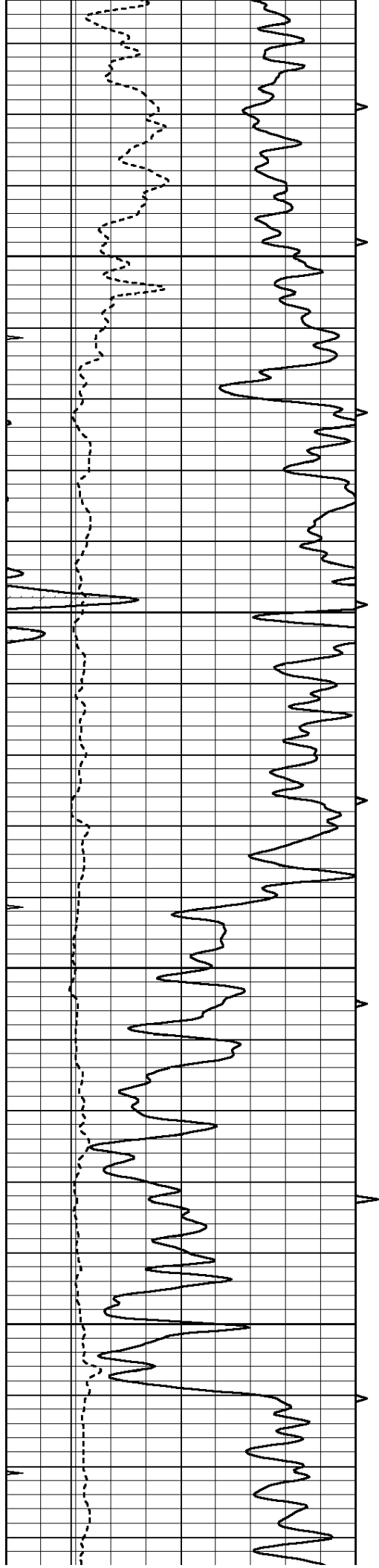
Database File: 011820pe.db
 Dataset Pathname: pass6.5
 Presentation Format: slt
 Dataset Creation: Fri Dec 06 06:37:52 2013
 Charted by: Depth in Feet scaled 1:240

0	GAMMA RAY (GAPI)	150	ABHV	140	DELTA TIME (usec/ft)	40
6	CALIPER (in)	16	10 (ft3)	0	30	SONIC POROSITY (pu)
0	MINMK	20	TBHV	0	ITT (msec)	20
			0 (ft3)	10		







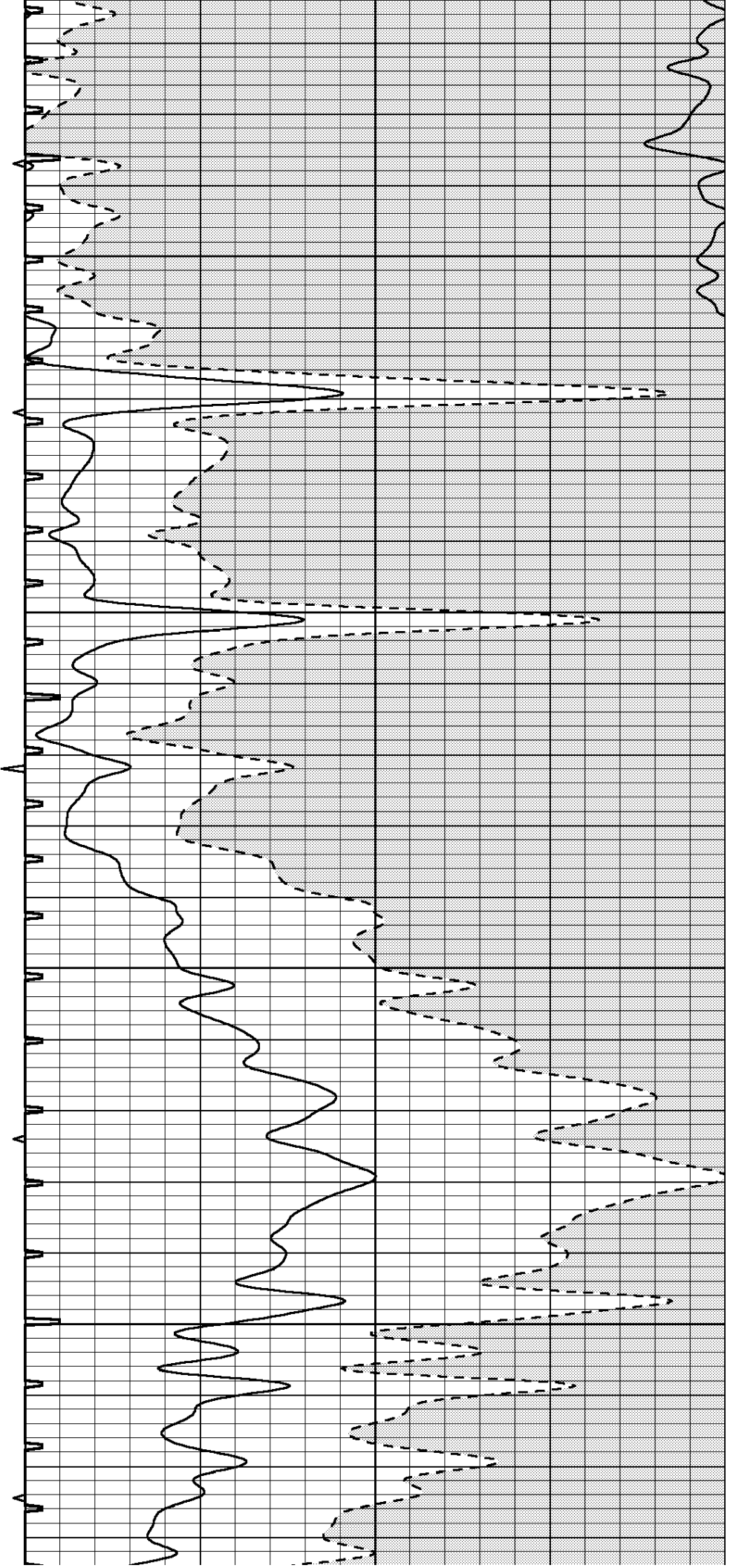


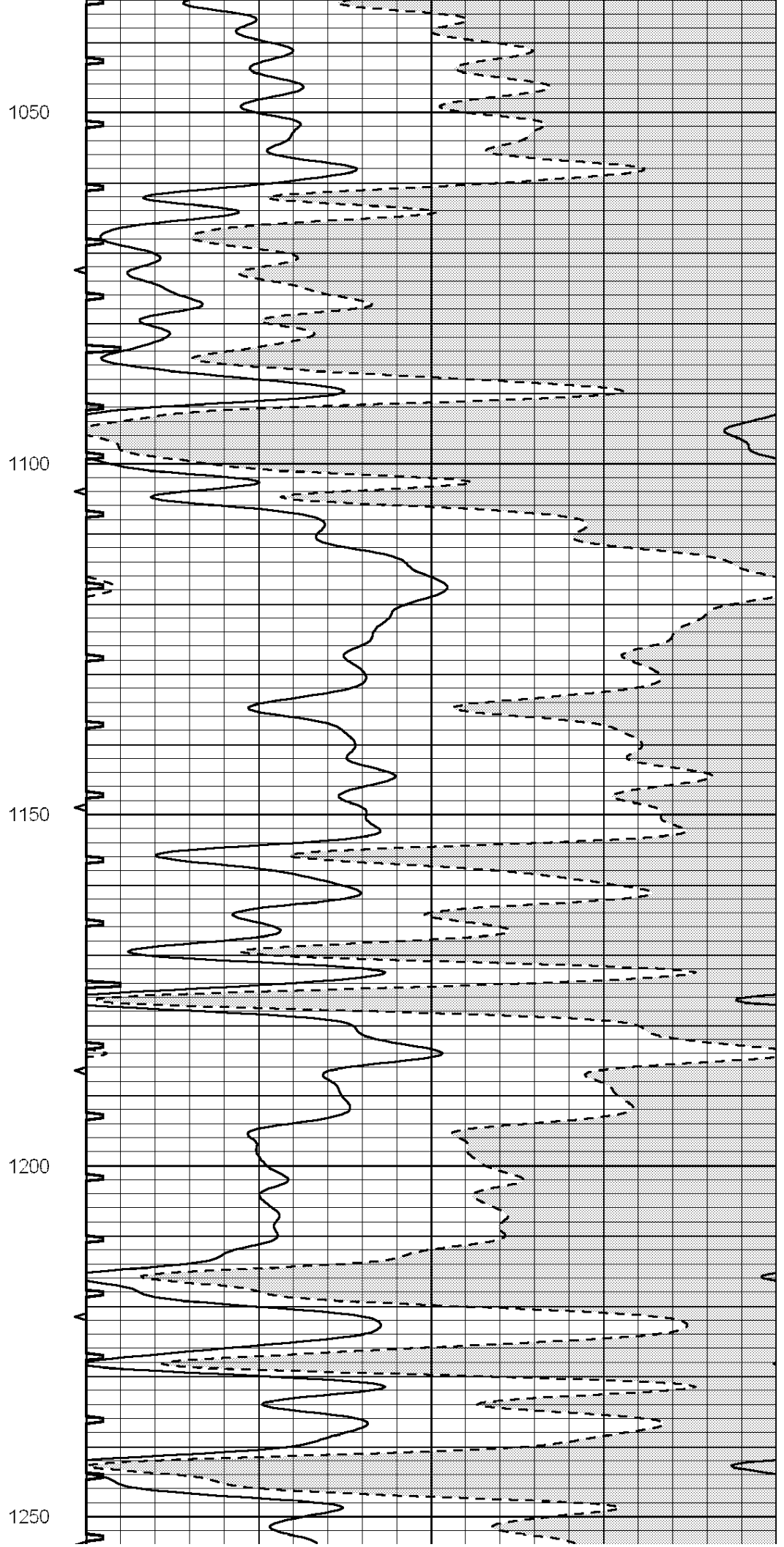
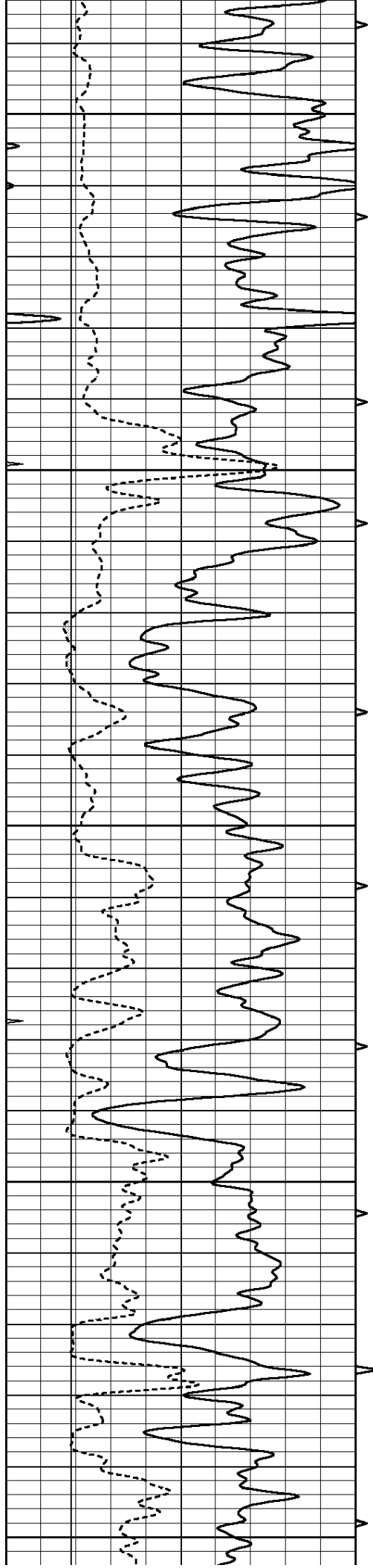
850

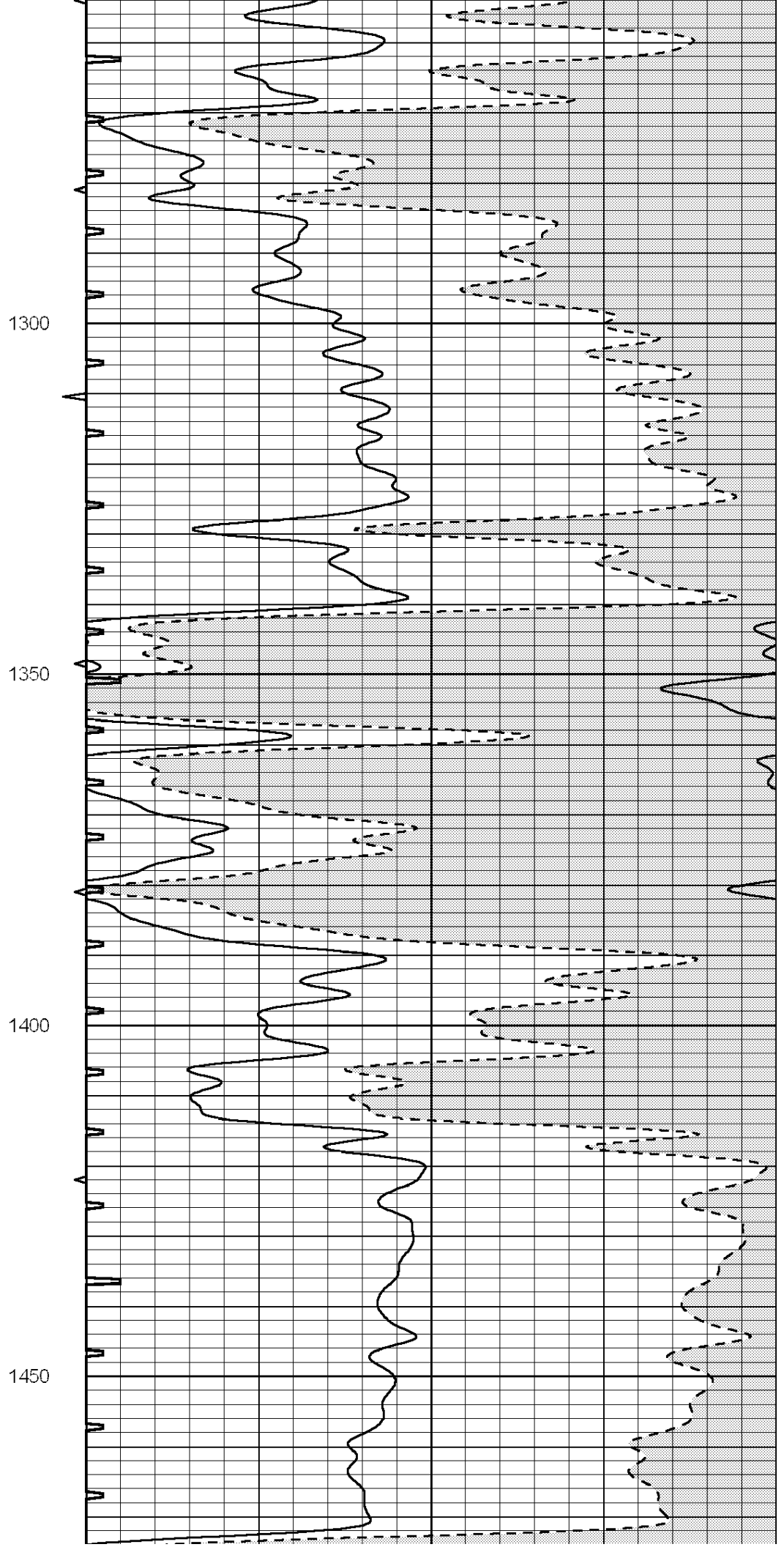
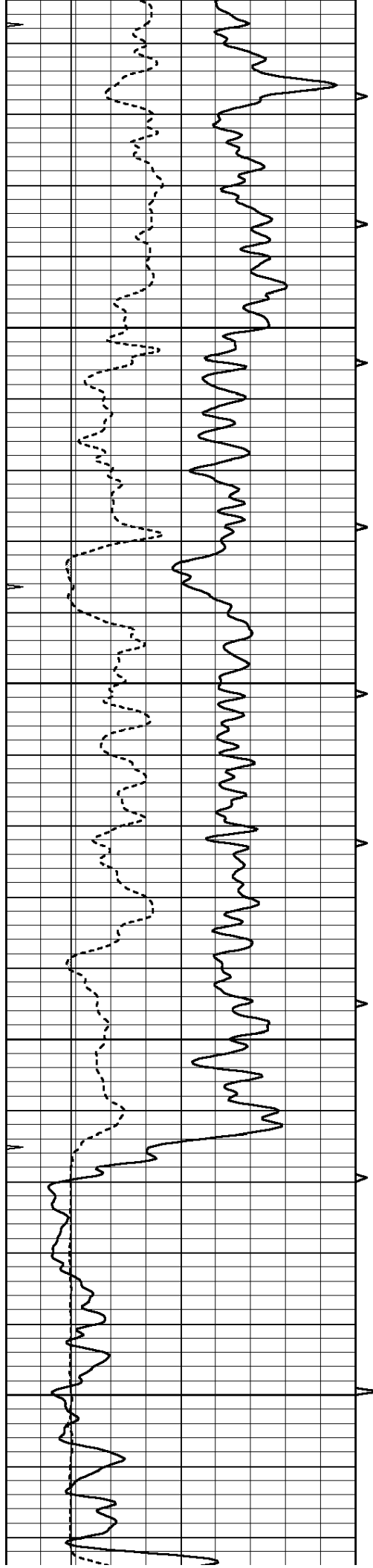
900

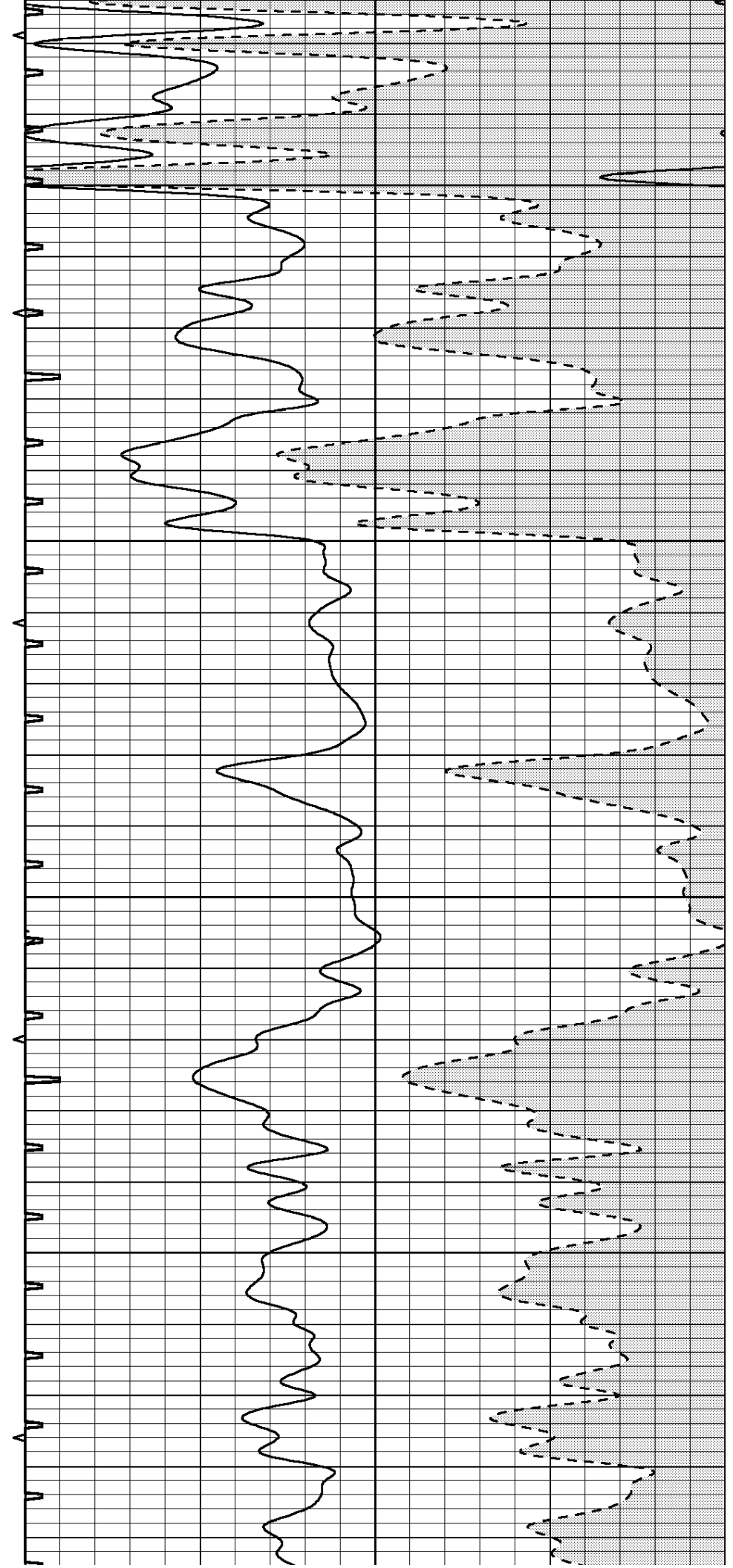
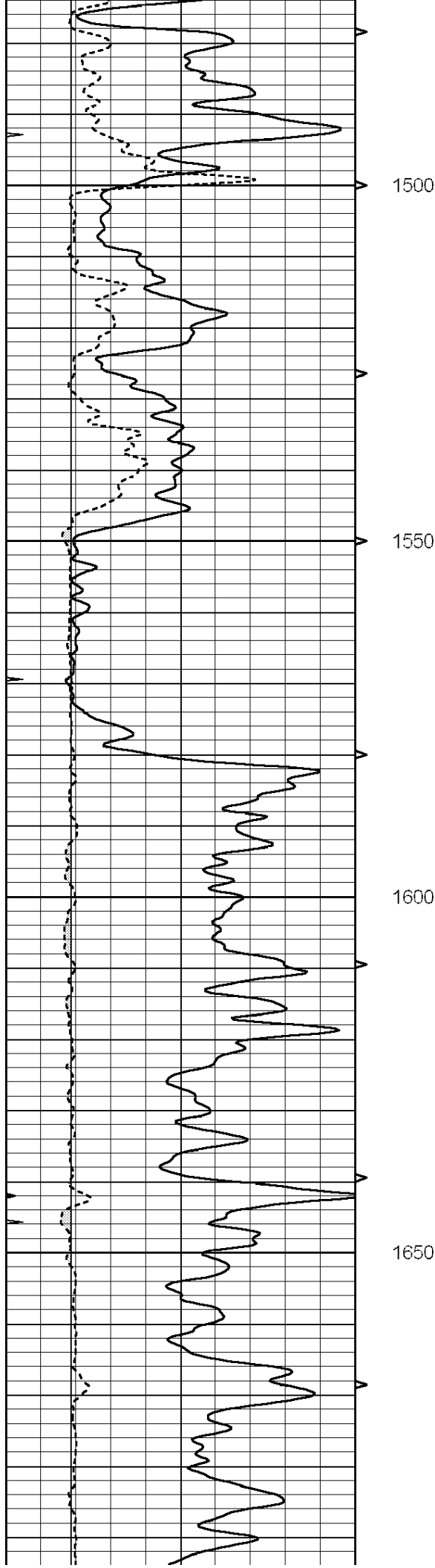
950

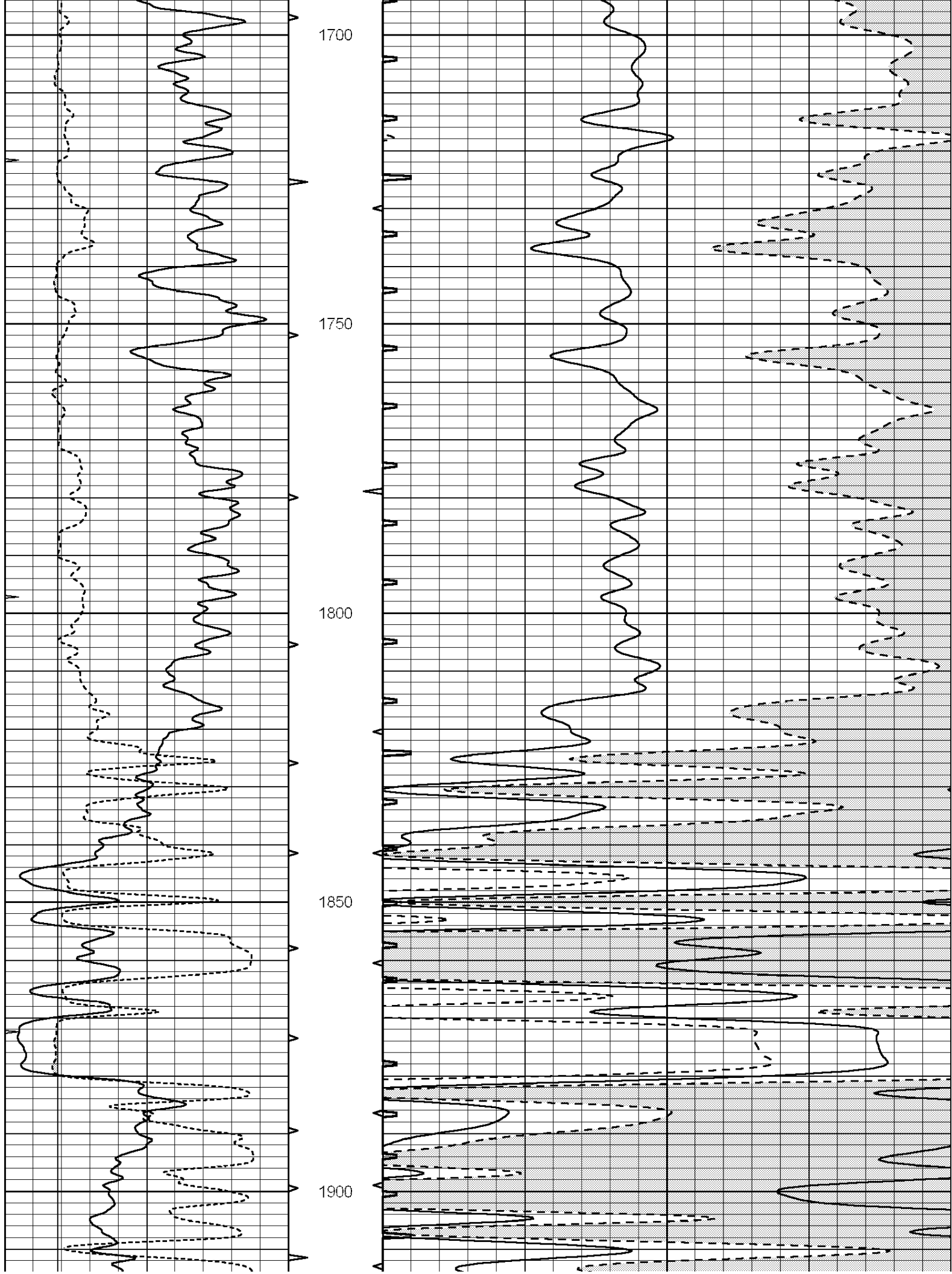
1000

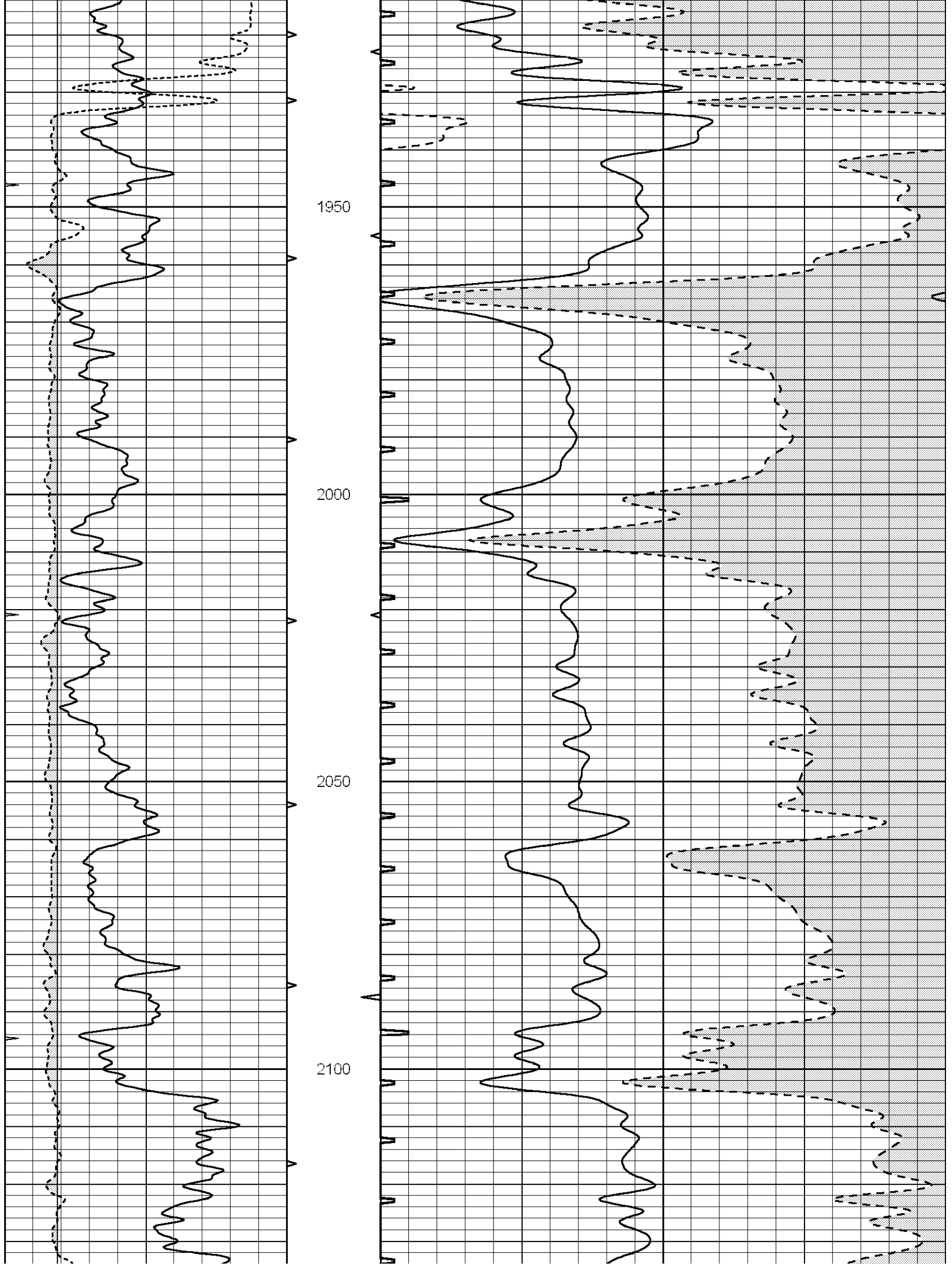


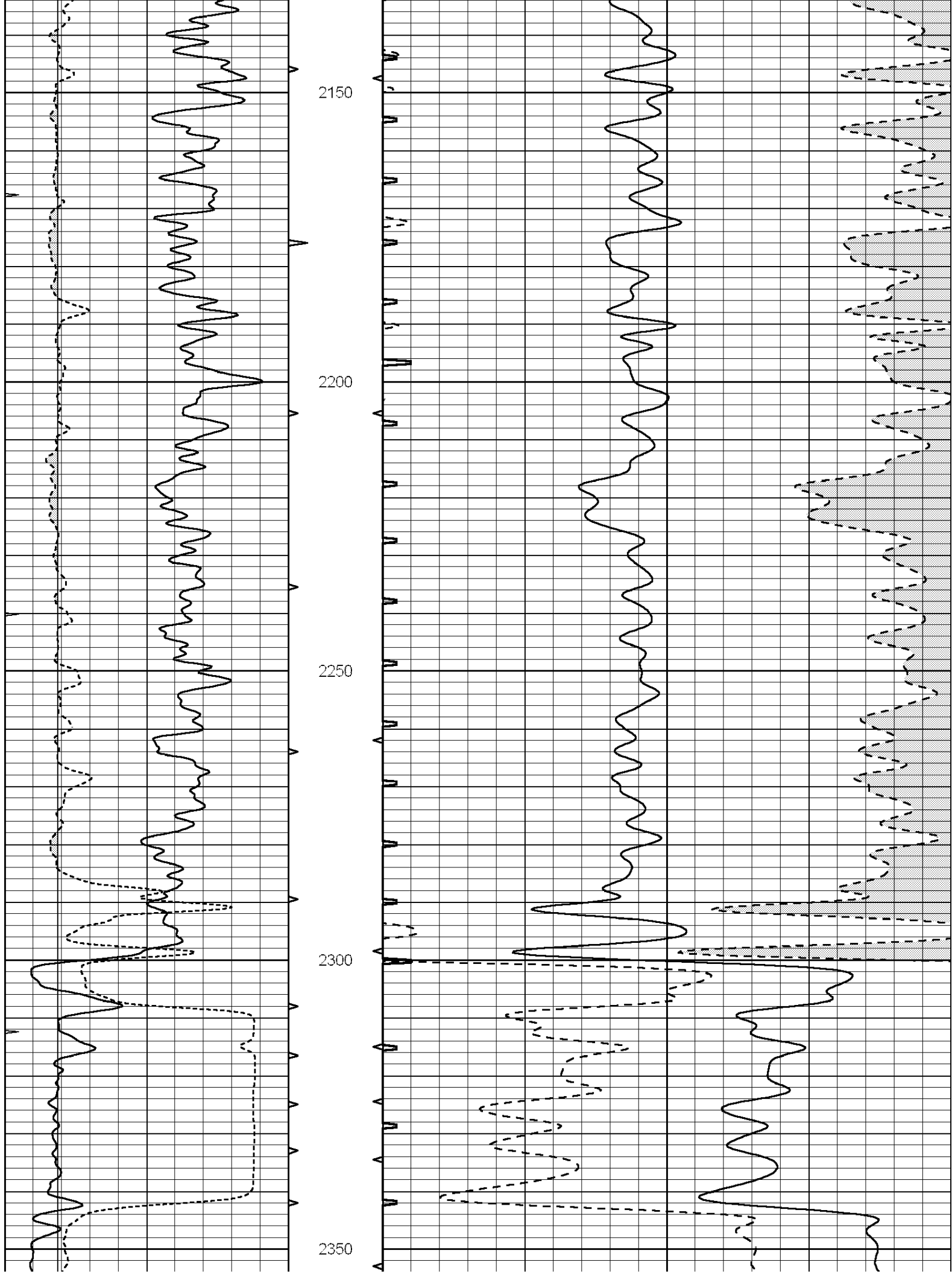


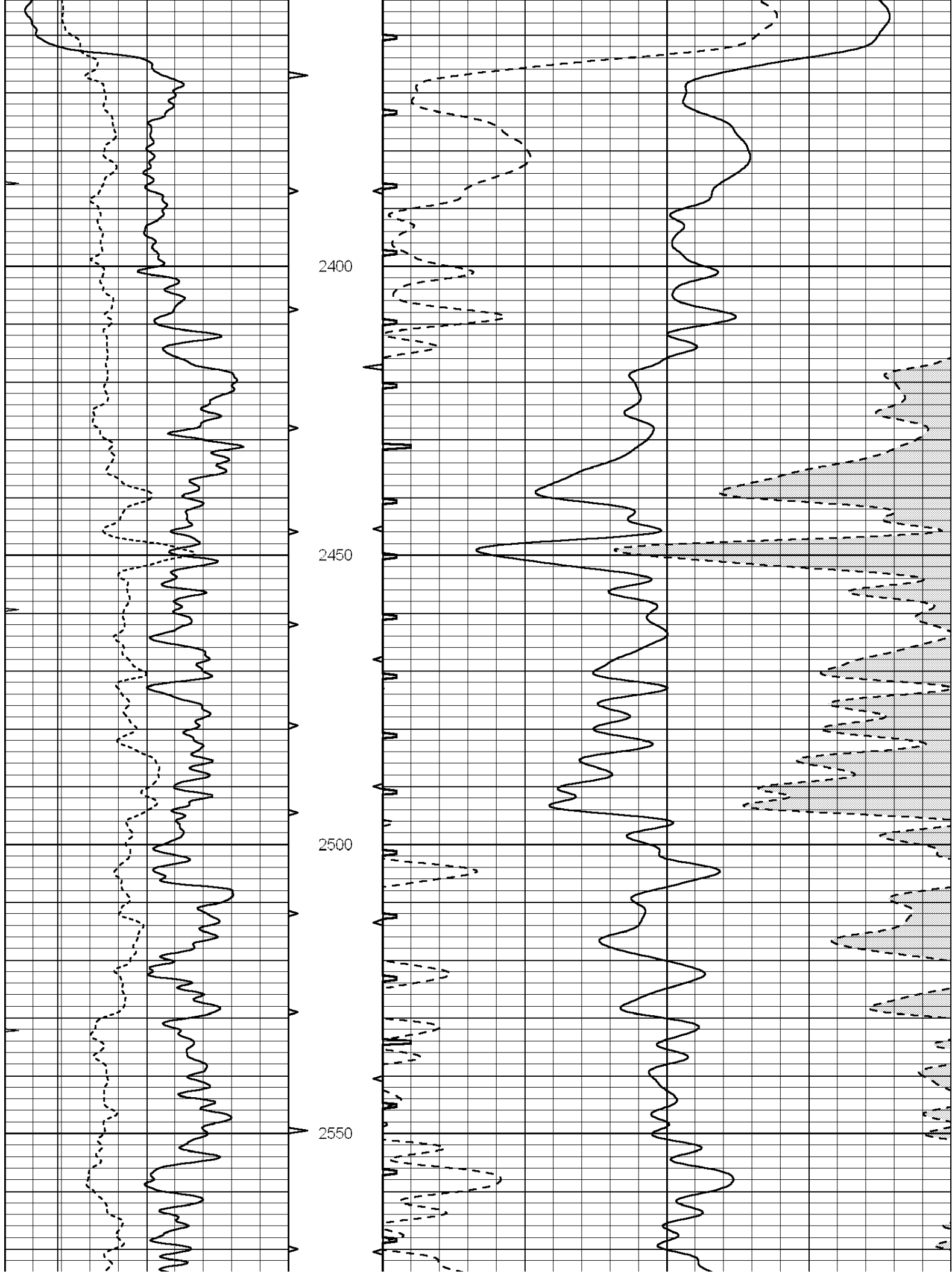


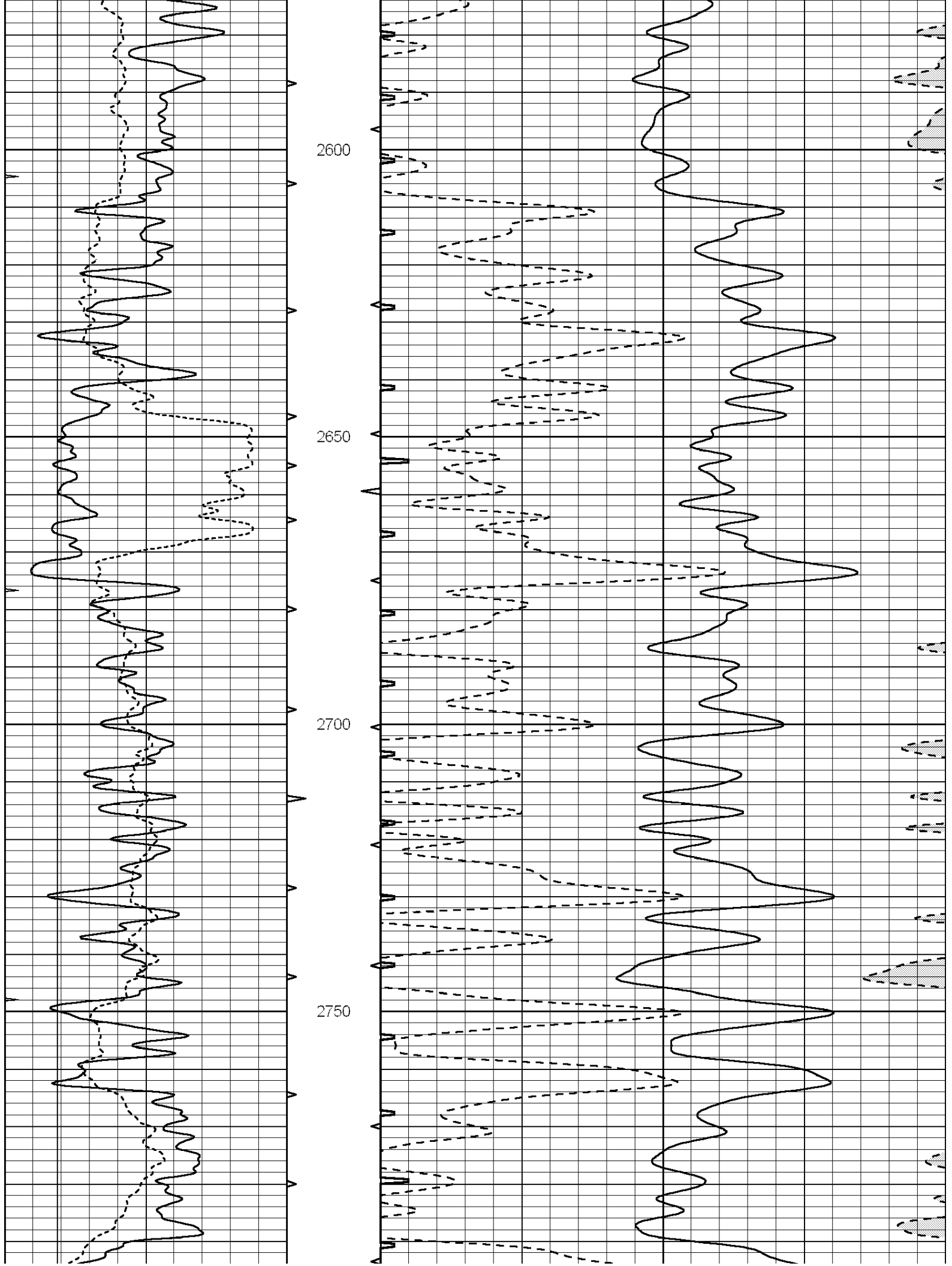


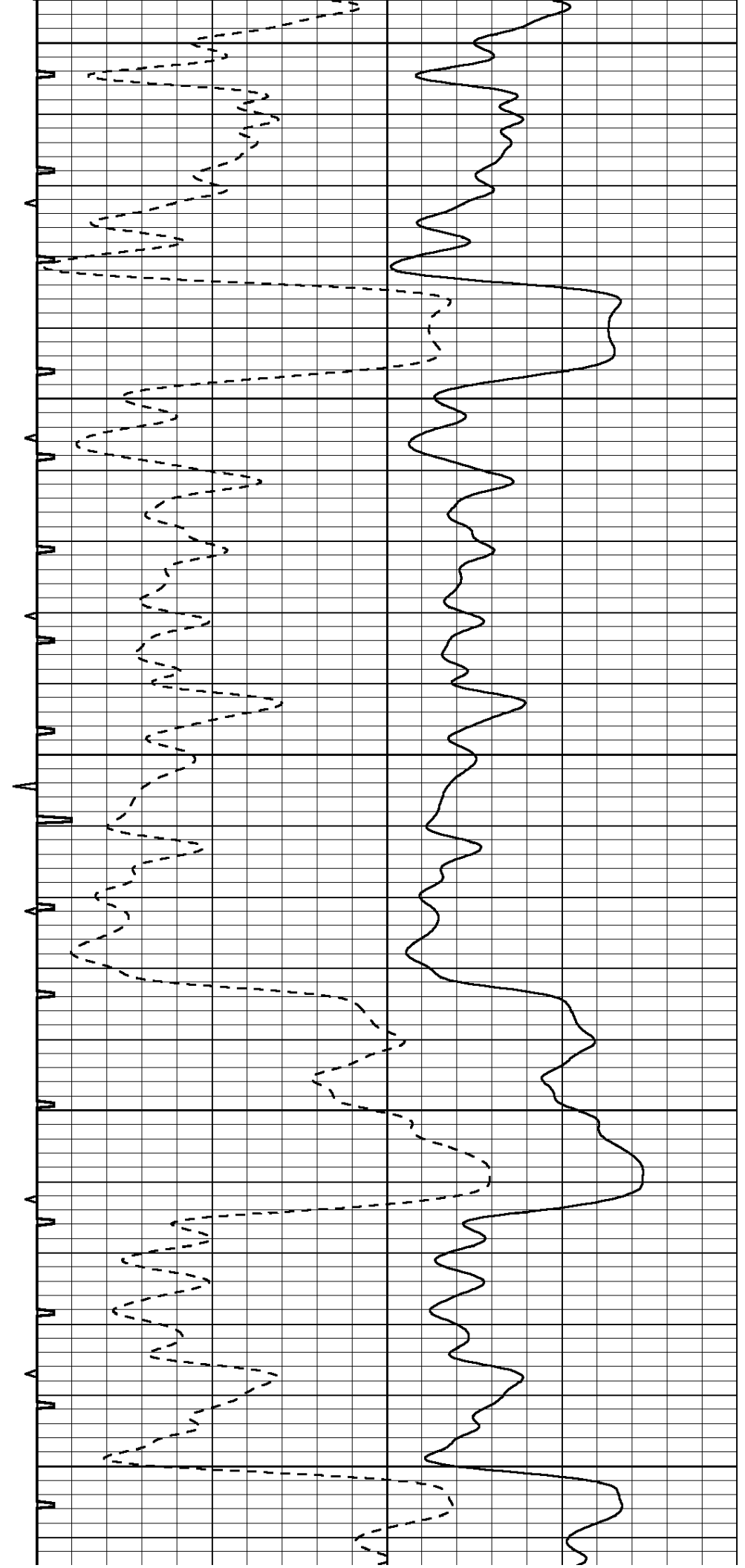
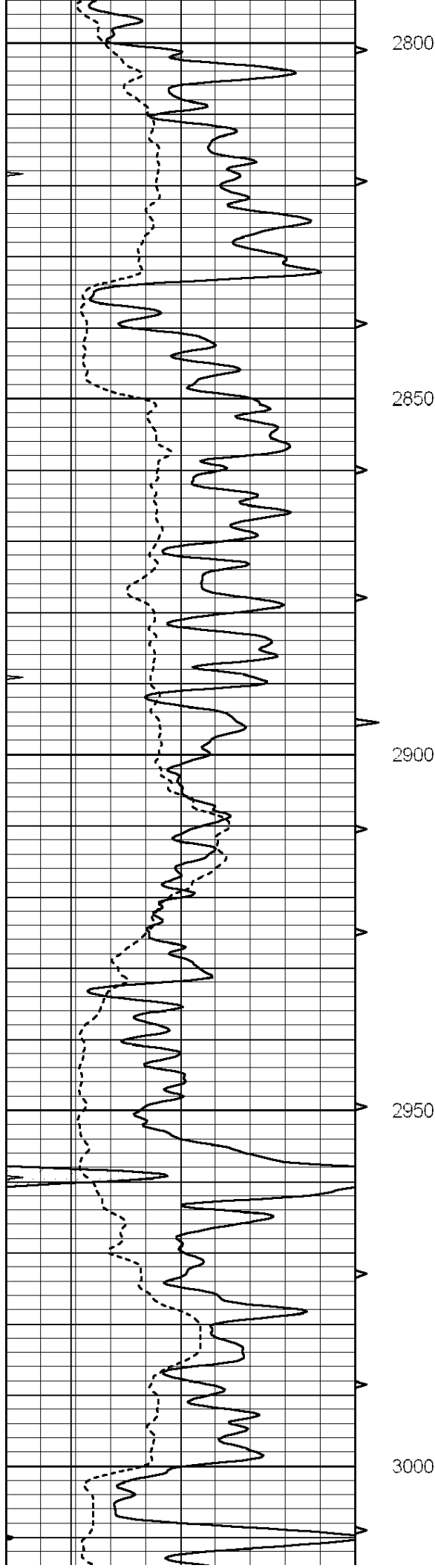


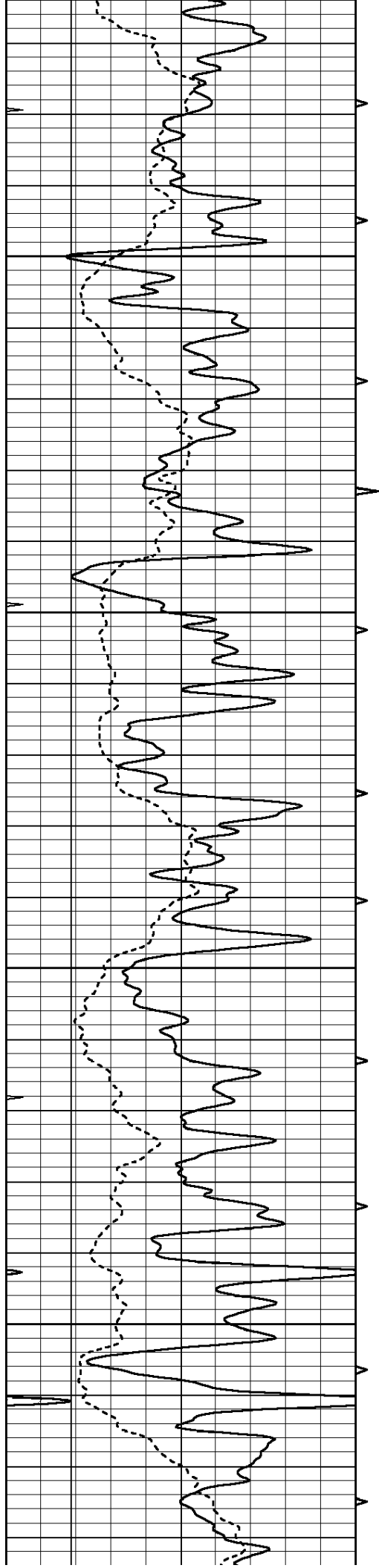










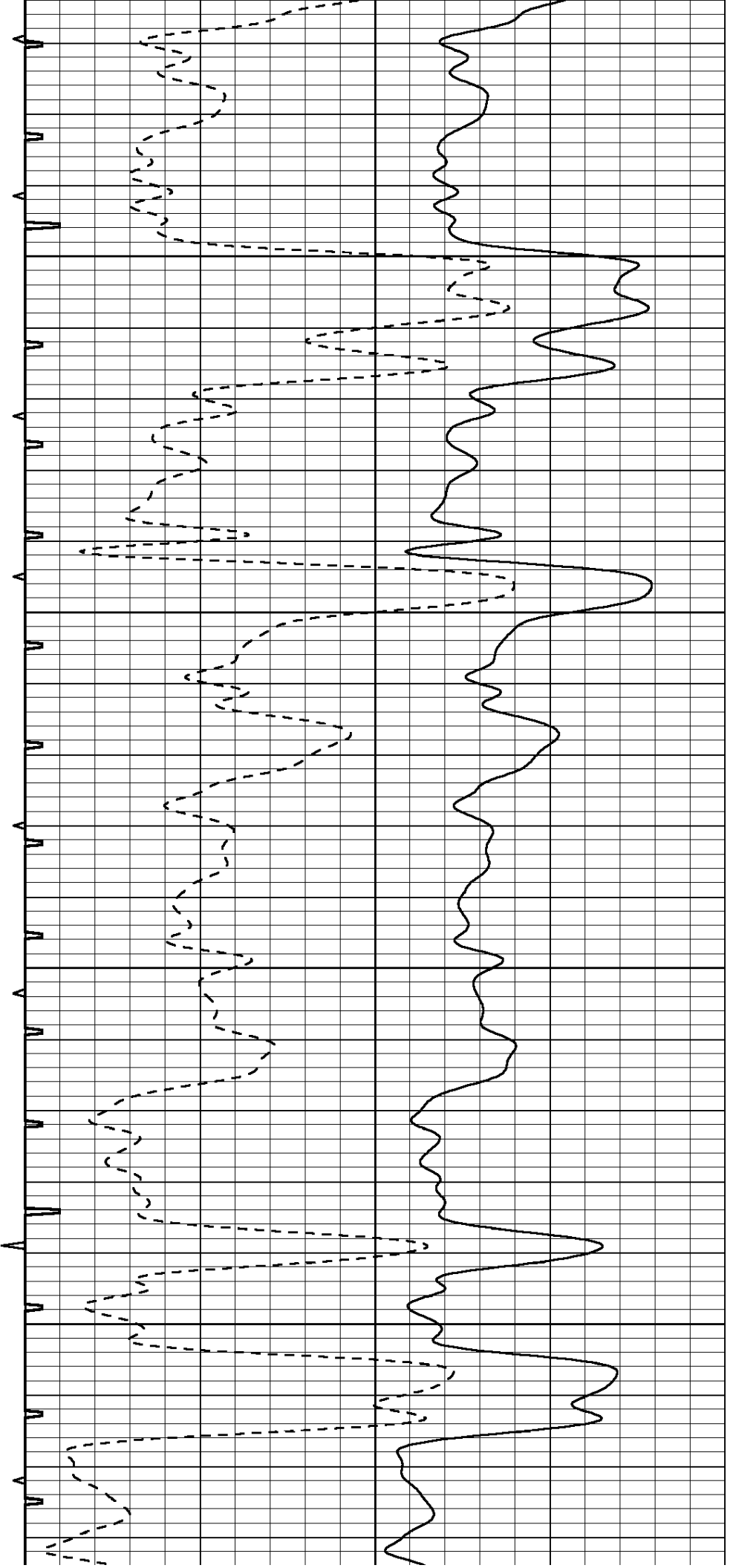


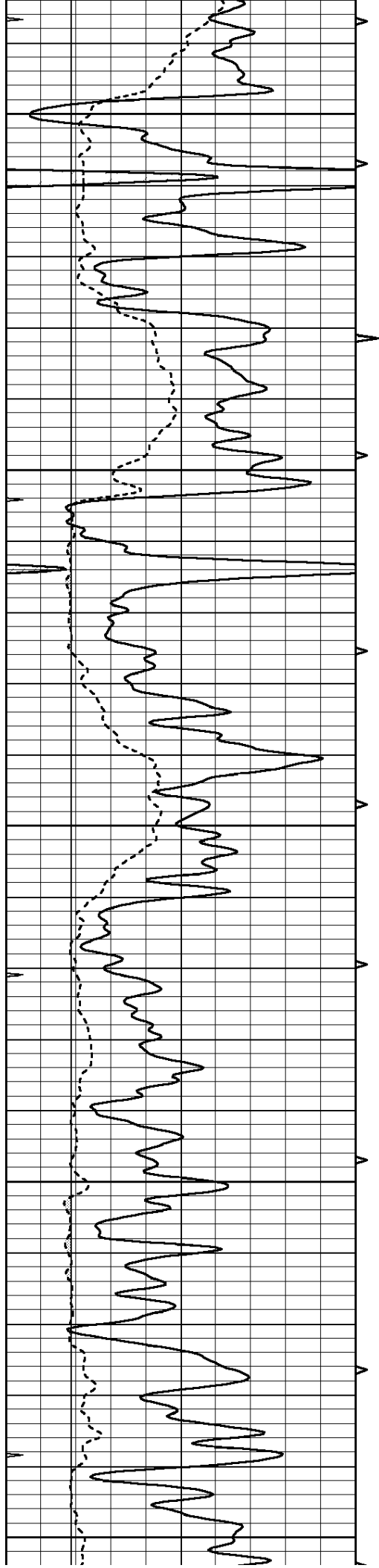
3050

3100

3150

3200





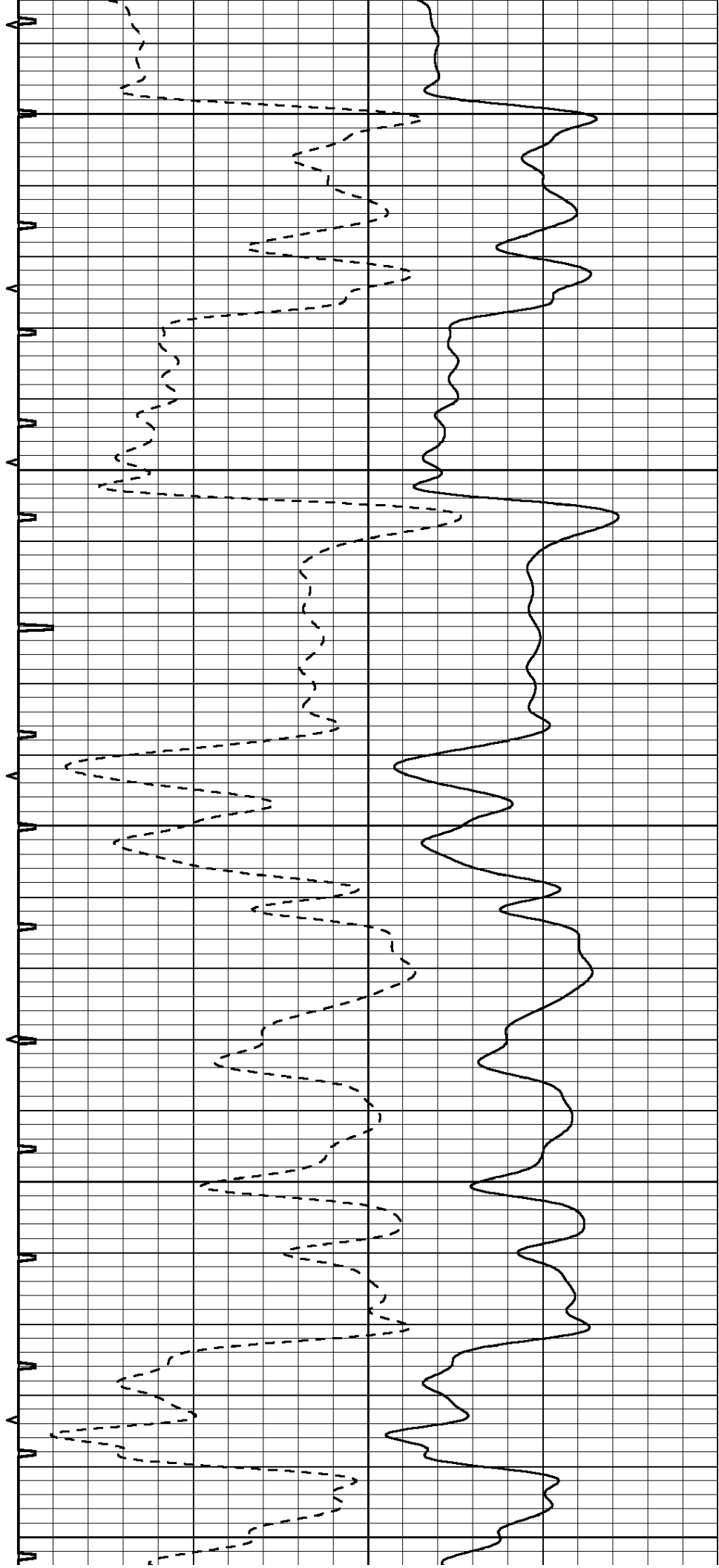
3250

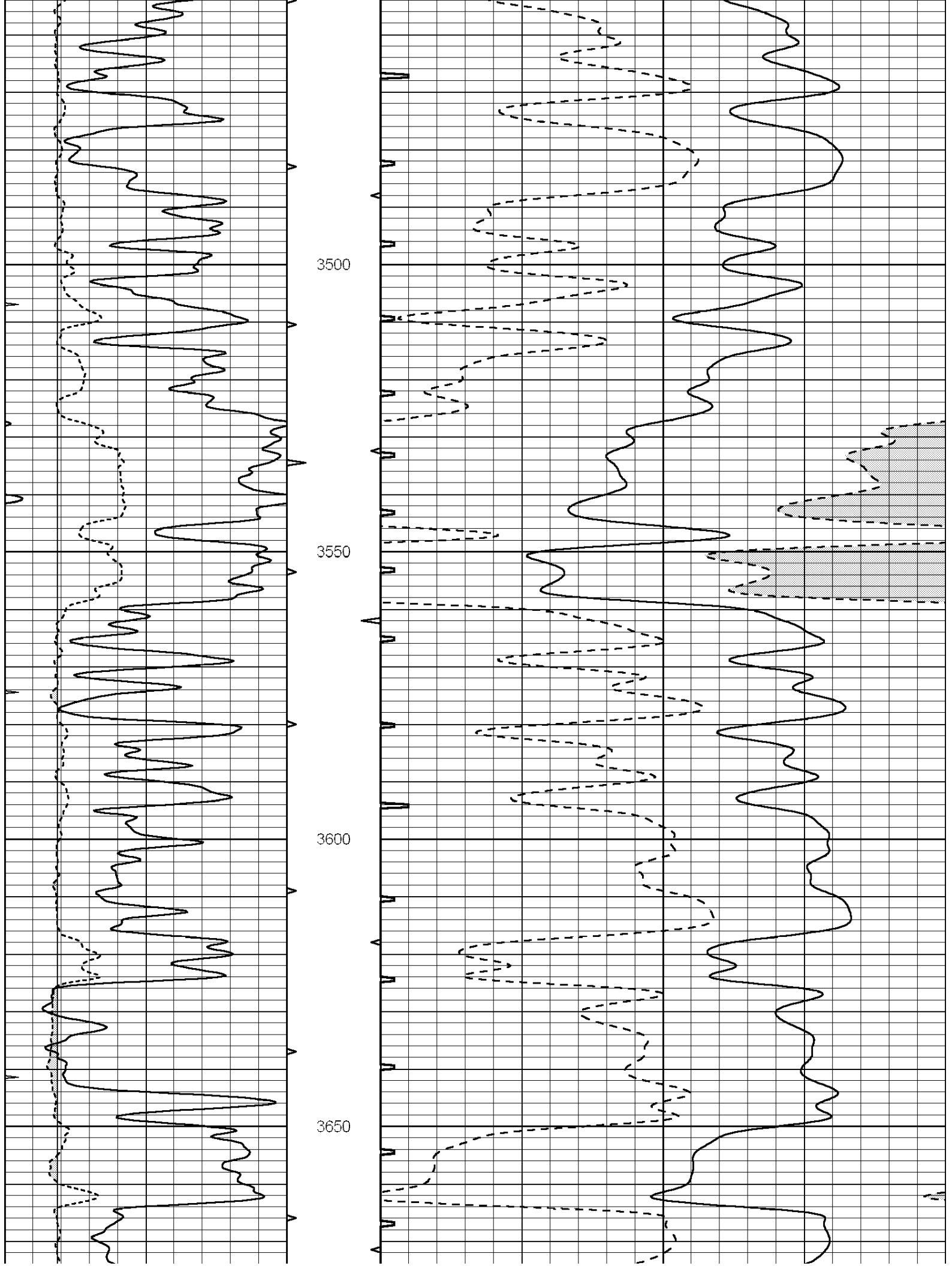
3300

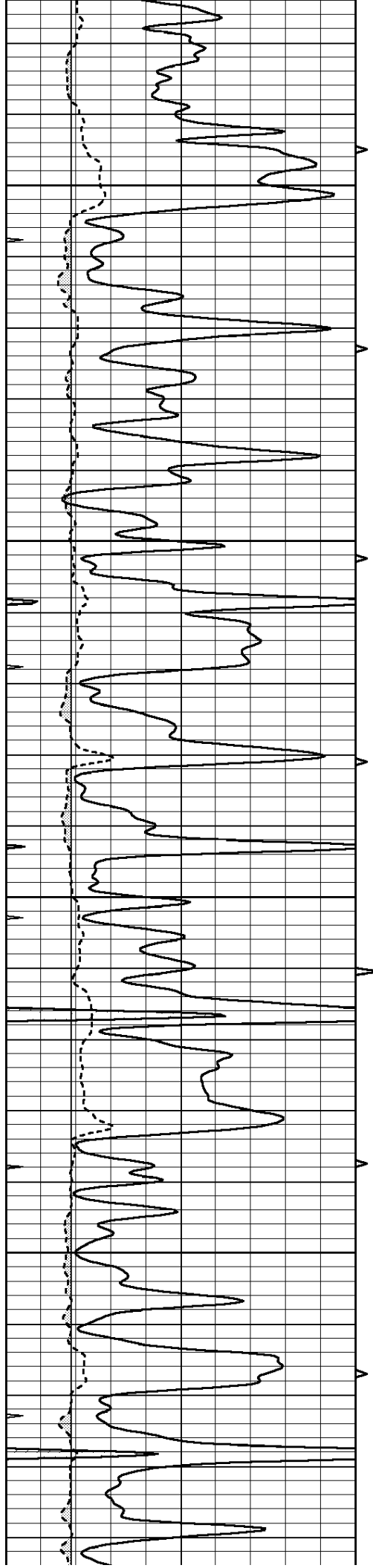
3350

3400

3450





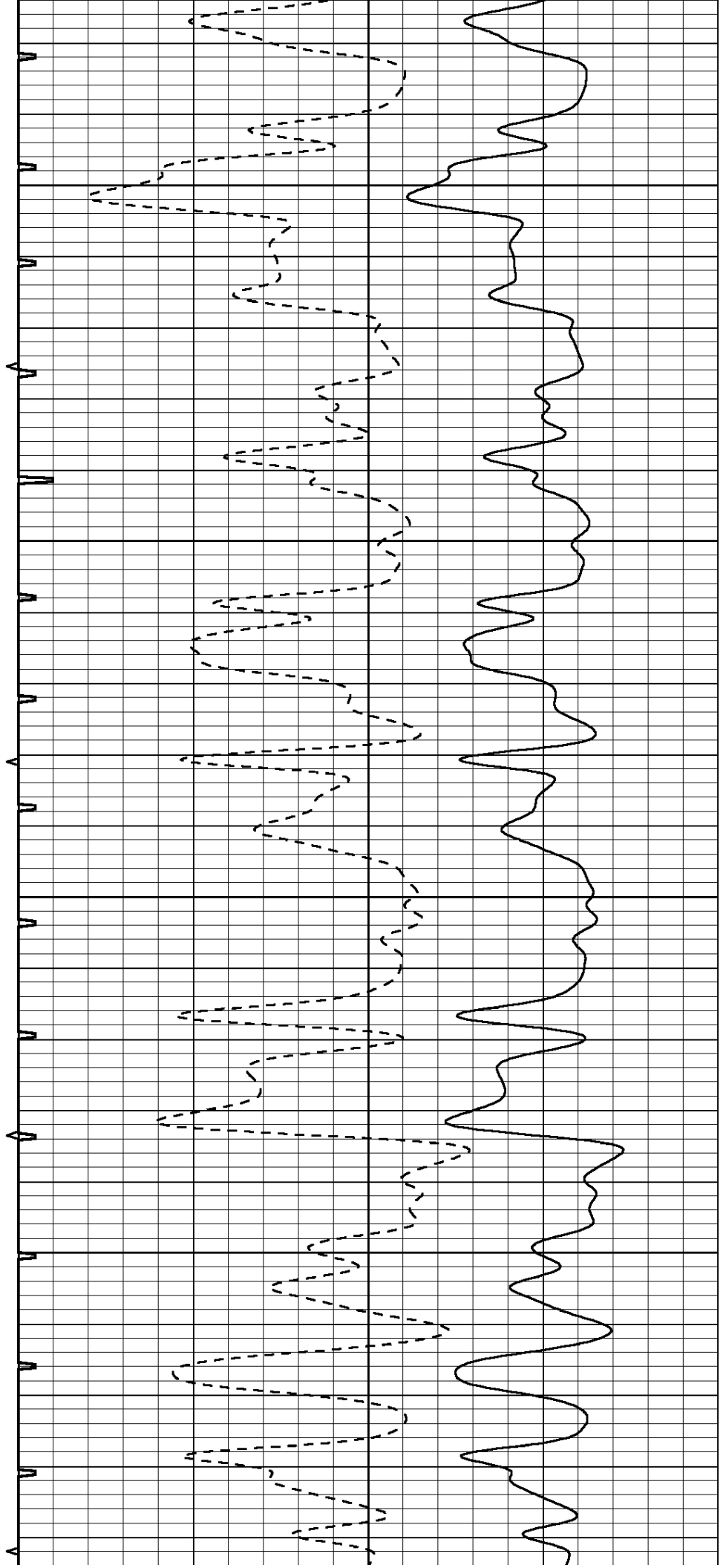
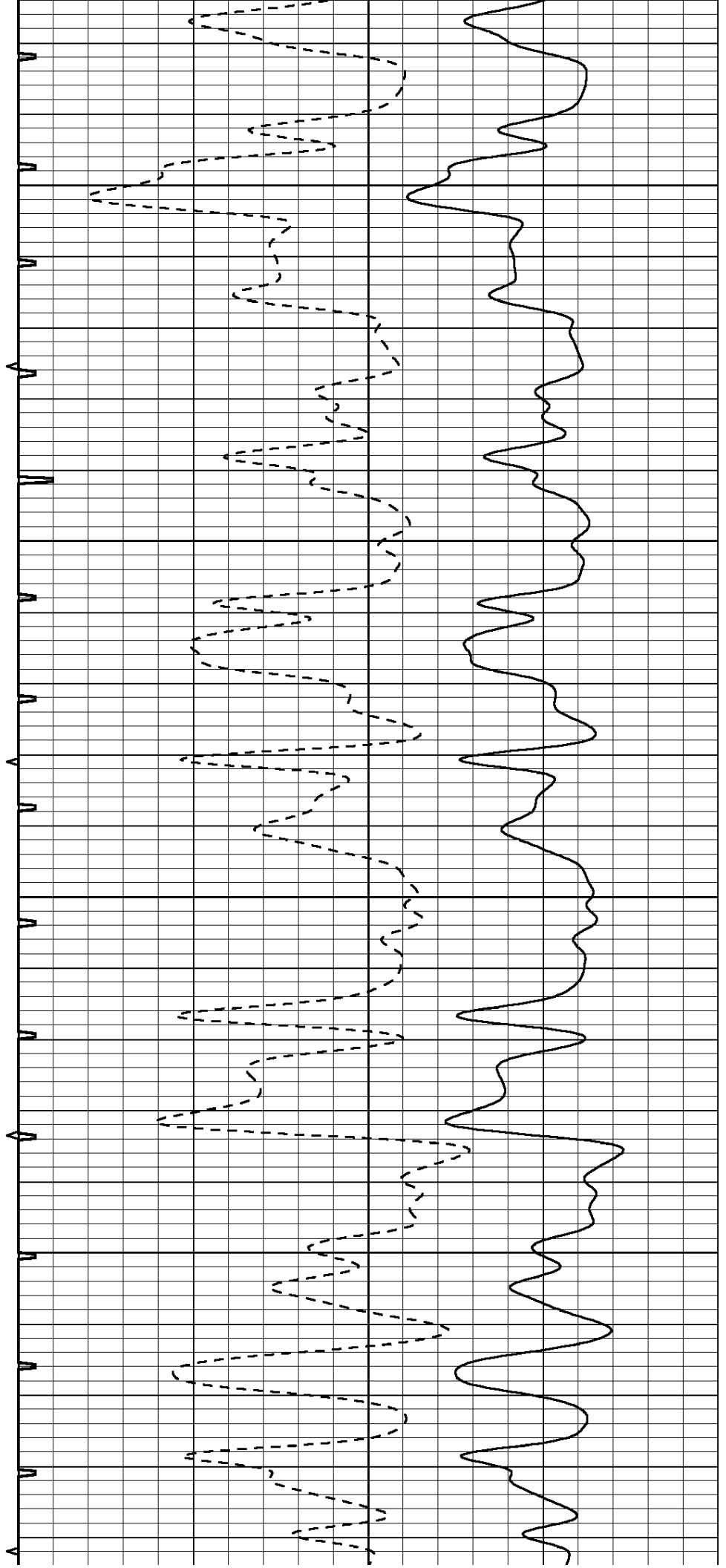


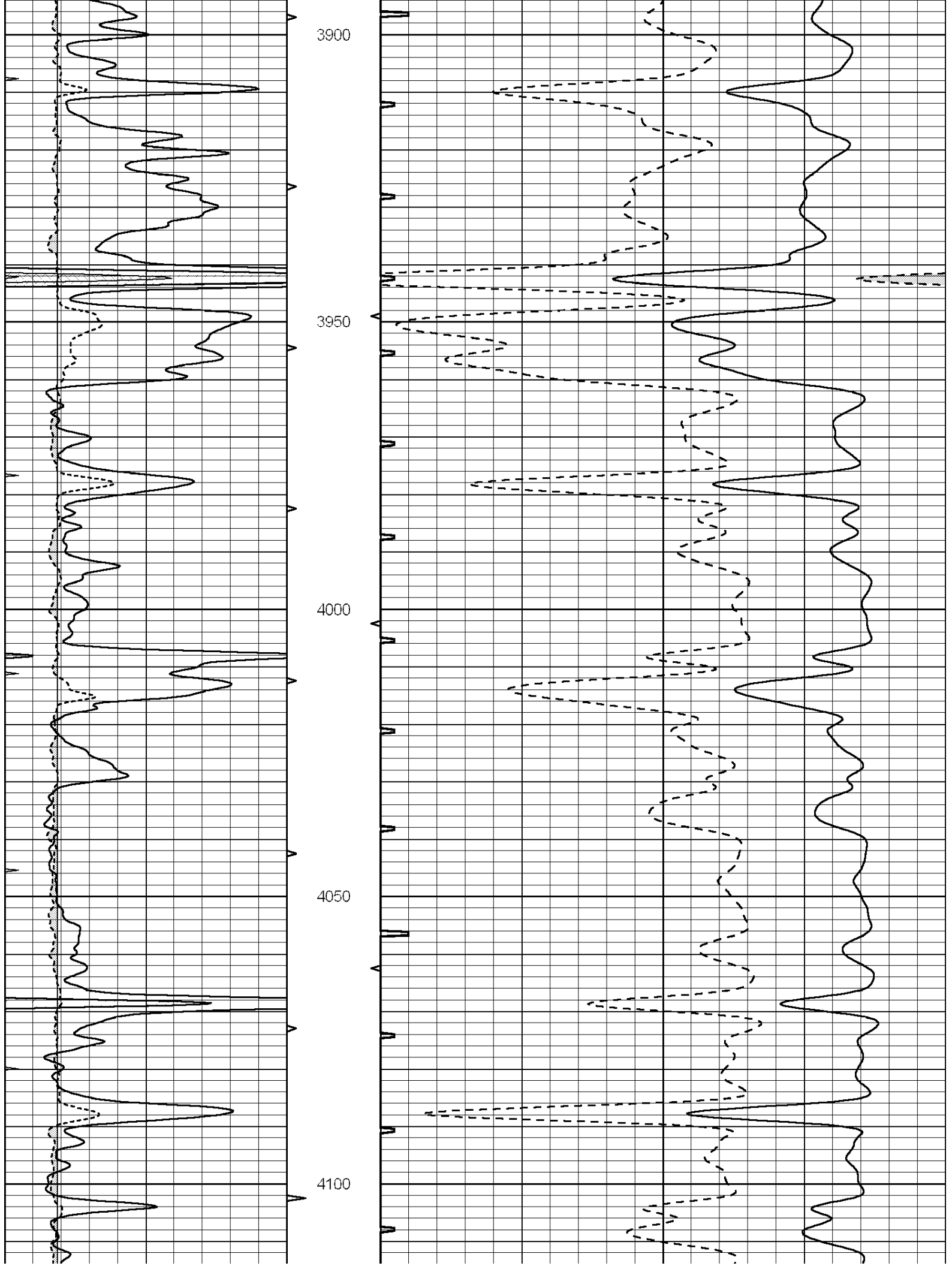
3700

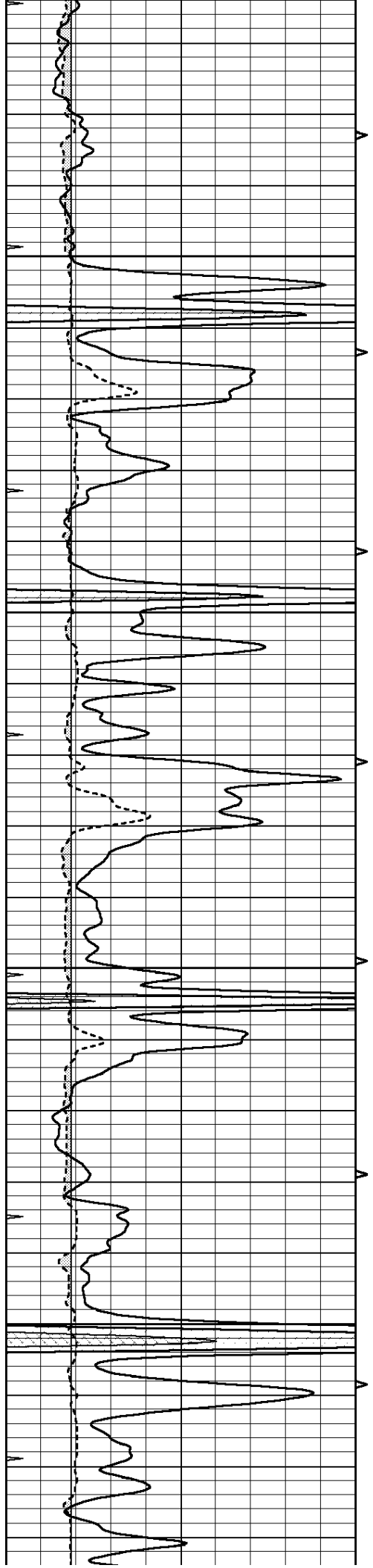
3750

3800

3850





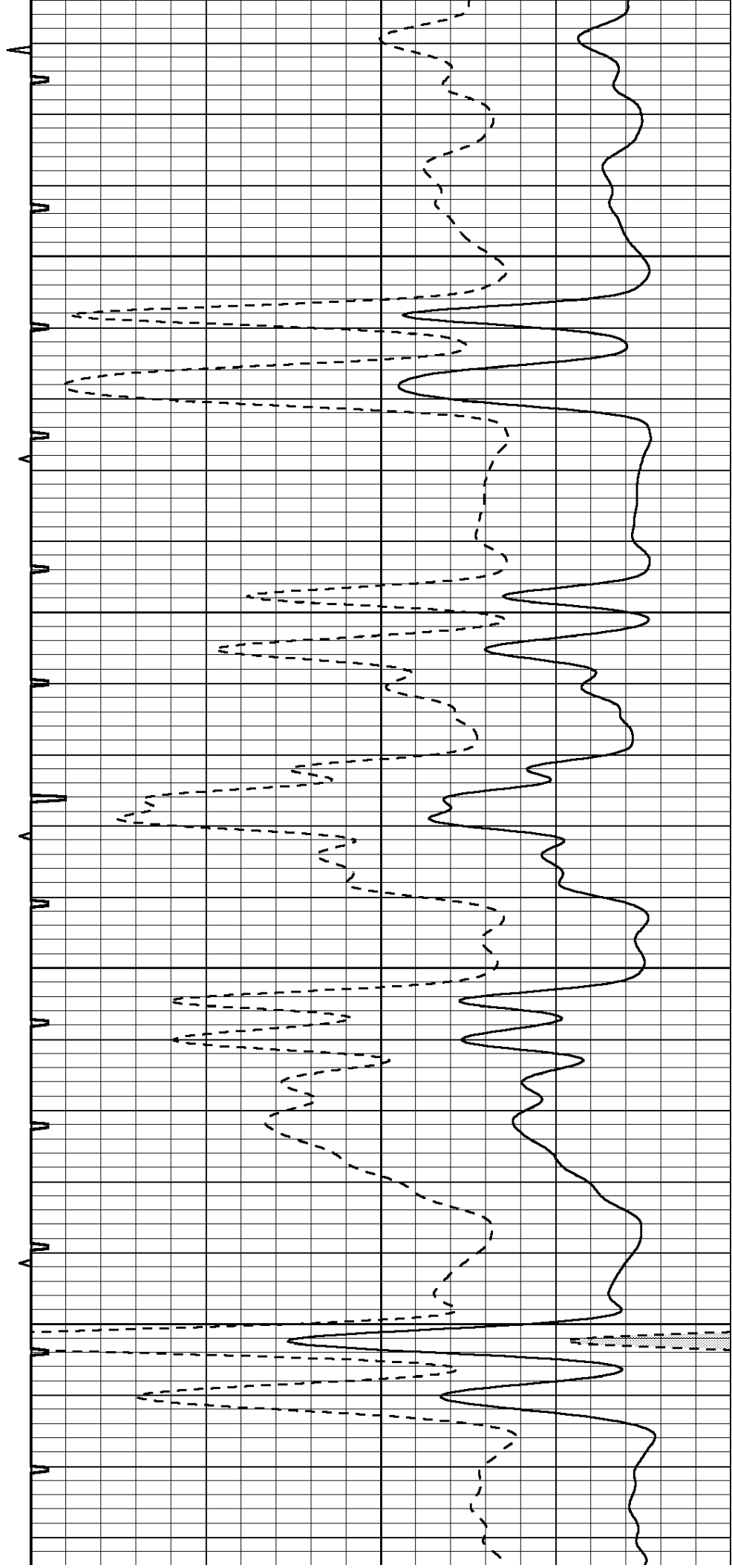


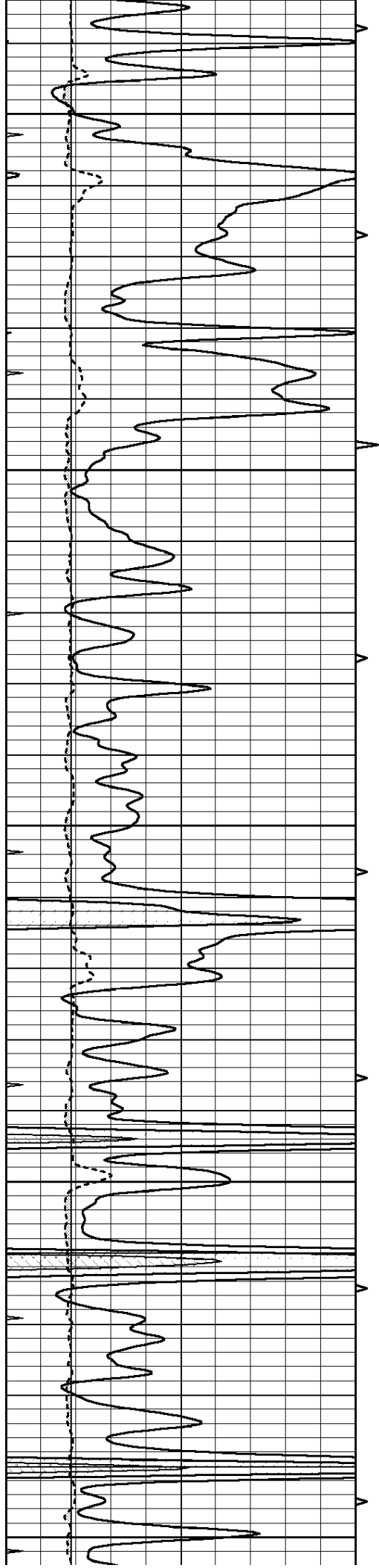
4150

4200

4250

4300





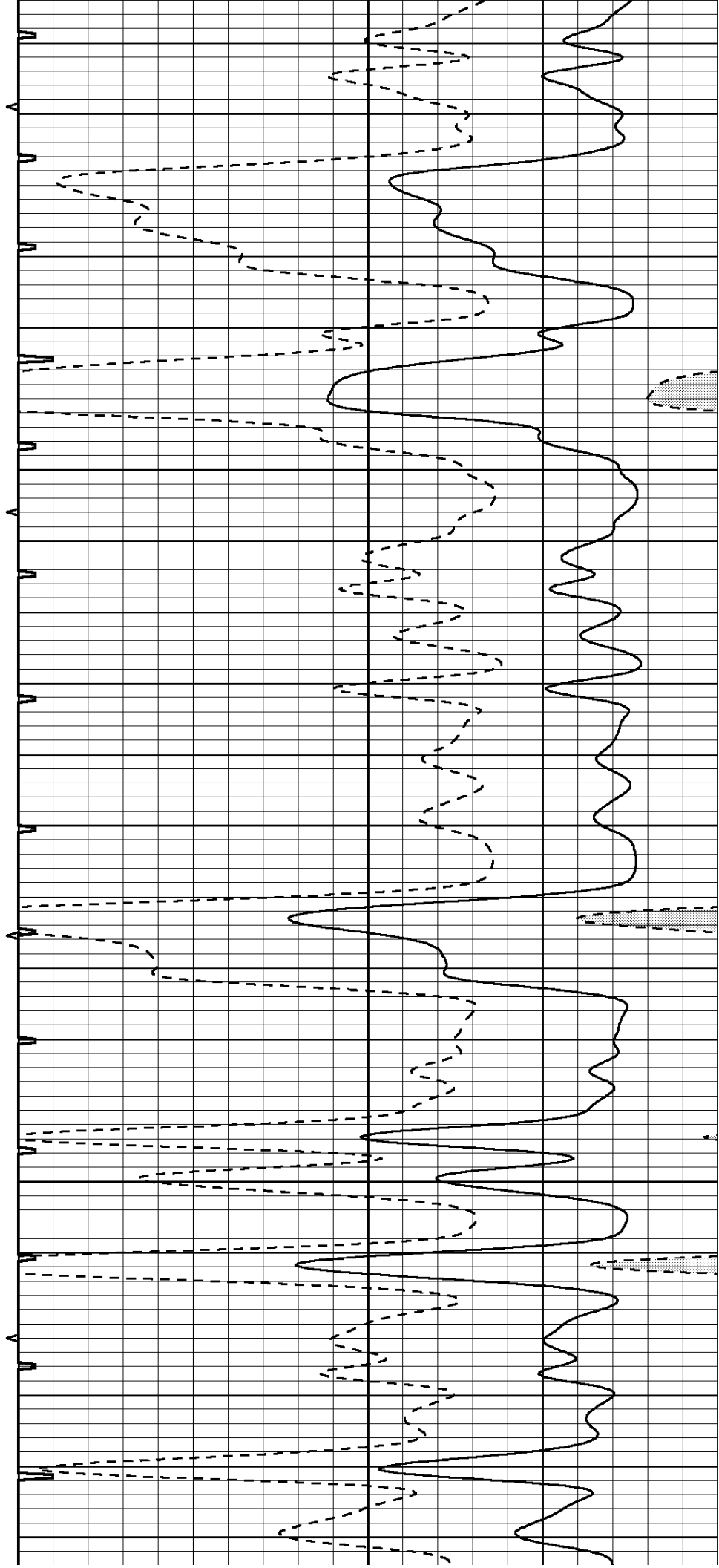
4350

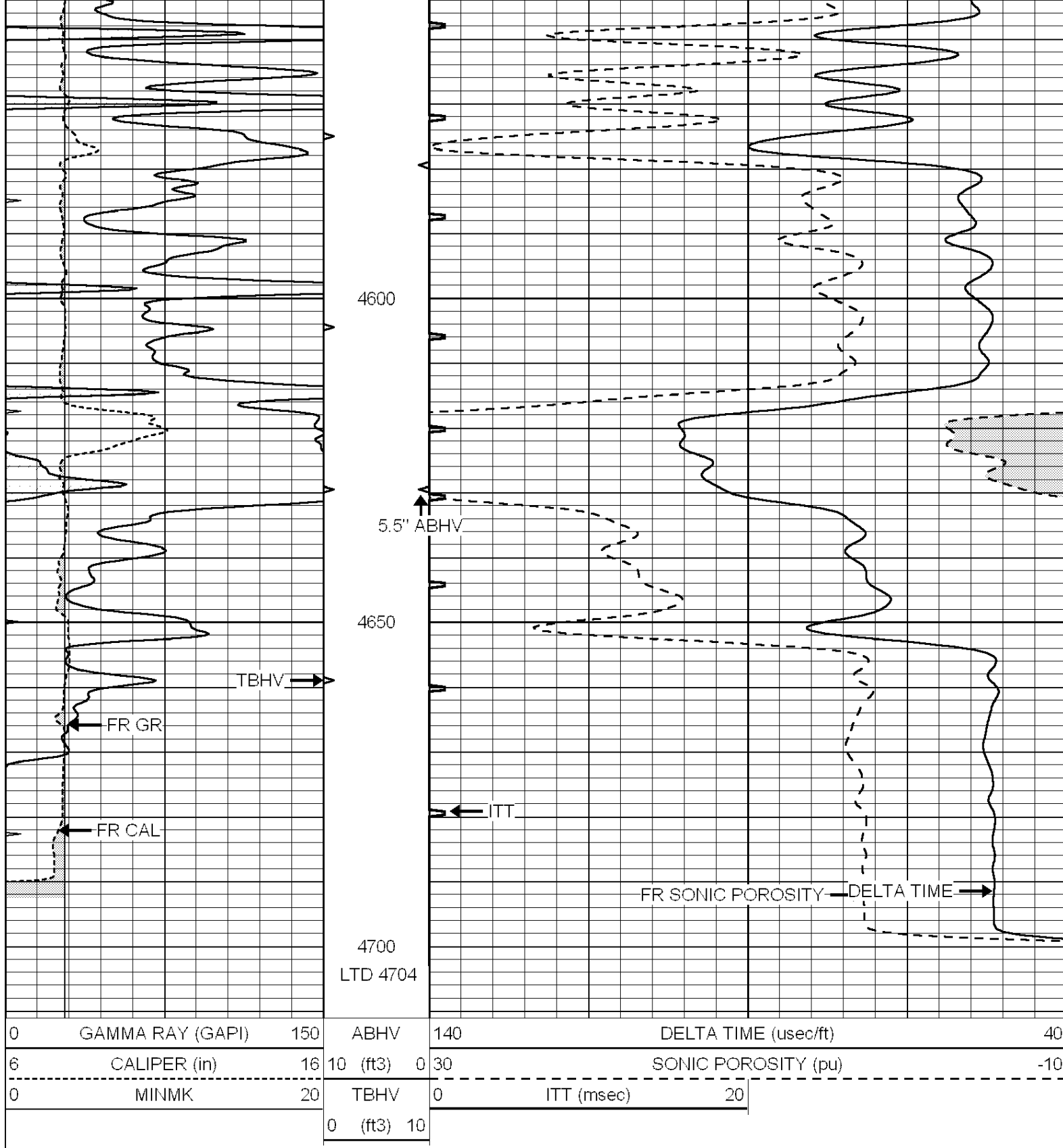
4400

4450

4500

4550





REPEAT SECTION

Database File: 011820pe.db
 Dataset Pathname: pass5.3
 Presentation Format: slt
 Dataset Creation: Fri Dec 06 05:24:55 2013
 Charted by: Depth in Feet scaled 1:240

0	GAMMA RAY (GAPI)	150	ABHV	140	DELTA TIME (usec/ft)	40
6	CALIPER (in)	16	10 (ft3) 0	30	SONIC POROSITY (pu)	-10
0	MINMK	20	TBHV	0	ITT (msec)	20
			0 (ft3) 10			

