



**COMPLETION  
& PRODUCTION  
SERVICES CO.**

**MICRO  
LOG**

Company MULL DRILLING COMPANY, INC.  
Well #1-2 FRANCE  
Field WILDCAT  
County SCOTT  
State KANSAS

Company MULL DRILLING COMPANY, INC.  
Well #1-2 FRANCE  
Field WILDCAT  
County SCOTT State KANSAS

Location: API # : 15-171-21001-0000  
2492' FNL & 2651' FWL  
SEC 2 TWP 17S RGE 32W  
Permanent Datum GROUND LEVEL Elevation 2976  
Log Measured From KELLY BUSHING 5' A.G.L.  
Drilling Measured From KELLY BUSHING  
Other Services  
CDL/CNL/PE  
DIL/SONIC  
Elevation  
K.B. 2981  
D.F. 2879  
G.L. 2976

Date	12/5/13
Run Number	TWO
Depth Driller	4700
Depth Logger	4704
Bottom Logged Interval	4682
Top Log Interval	3800
Casing Driller	8 5/8"@245'
Casing Logger	245
Bit Size	7 7/8"
Type Fluid in Hole	CHEMICAL MUD
Density / Viscosity	9.2/56
pH / Fluid Loss	8.5/6.2
Source of Sample	FLOWLINE
Rim @ Meas. Temp	.950@70F
Rmf @ Meas. Temp	.713@70F
Rmc @ Meas. Temp	1.14@70F
Source of Rmf / Rmc	MEASUREMENT
Rim @ BHT	.545@122F
Time Circulation Stopped	5 HOURS
Time Logger on Bottom	2:30 A.M.
Maximum Recorded Temperature	122F
Equipment Number	4854
Location	HAYS, KANSAS
Recorded By	JEFF LUEBBERS
Witnessed By	KEVIN KESSLER

<<< Fold Here >>>

All interpretations are opinions based on inferences from electrical or other measurements and we cannot and do not guarantee the accuracy or correctness of any interpretation, and we shall not, except in the case of gross or willful negligence on our part, be liable or responsible for any loss, costs, damages, or expenses incurred or sustained by anyone resulting from any interpretation made by any of our officers, agents or employees. These interpretations are also subject to our general terms and conditions set out in our current Price Schedule.

**Comments**

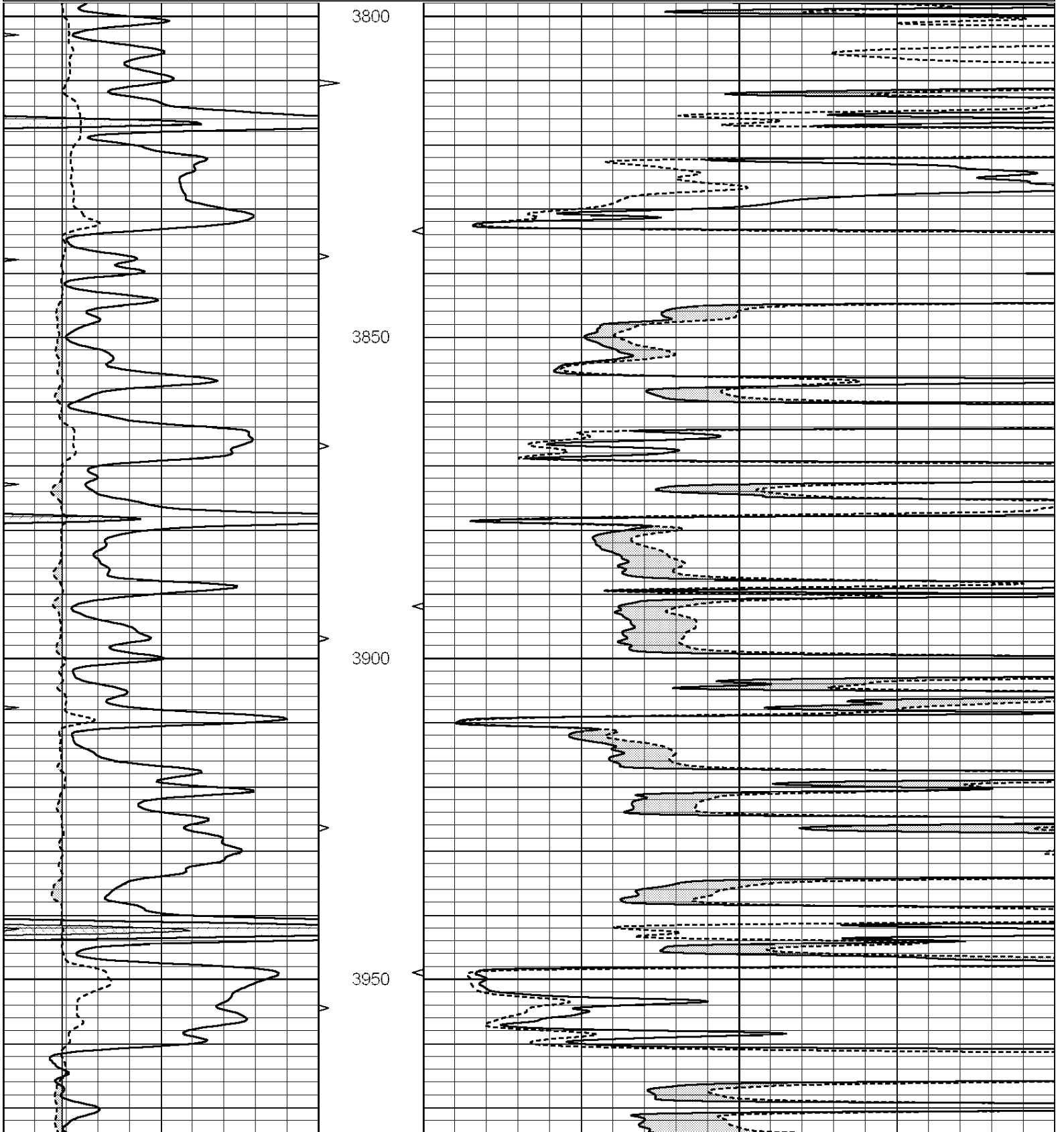
THANK YOU FOR USING "NABORS" HAYS, KANSAS 785-628-6395  
DIRECTIONS  
HEALY, KS. 12W. ON HWY 4 TO "PAWNEE RD.", 1/2N., 1/2E. INTO

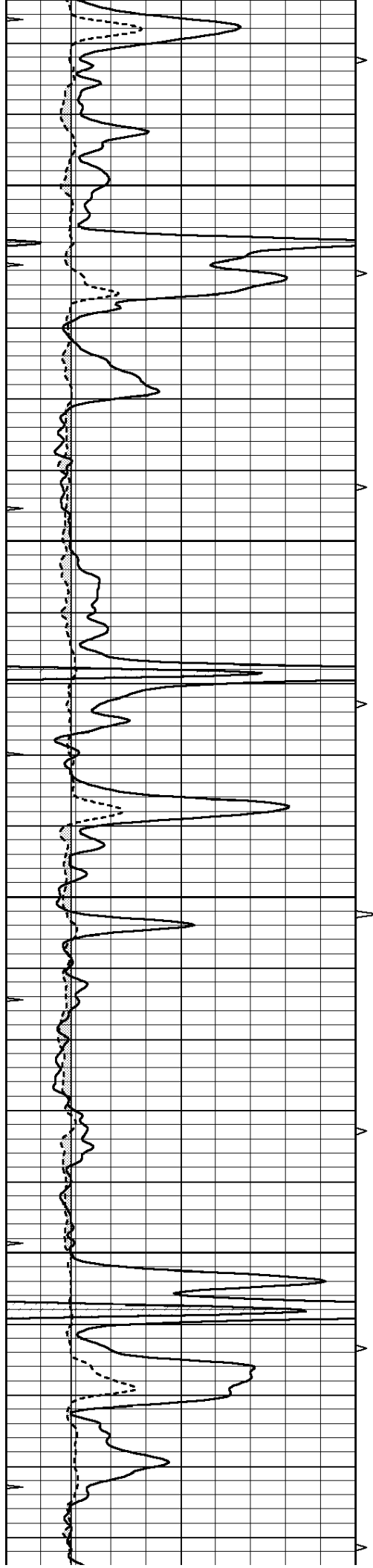


**MAIN SECTION**

Database File: 011820pe.db  
 Dataset Pathname: pass6.2  
 Presentation Format: micro  
 Dataset Creation: Fri Dec 06 05:44:30 2013  
 Charted by: Depth in Feet scaled 1:240

0	GAMMA RAY (GAPI)	150	ABHV	0	MEL1.5 (Ohm-m)	40
6	CALIPER (in)	16	10 (ft3)	0	MEL2.0 (Ohm-m)	40
0	MINMK	20	TBHV			
			0 (ft3)	10		



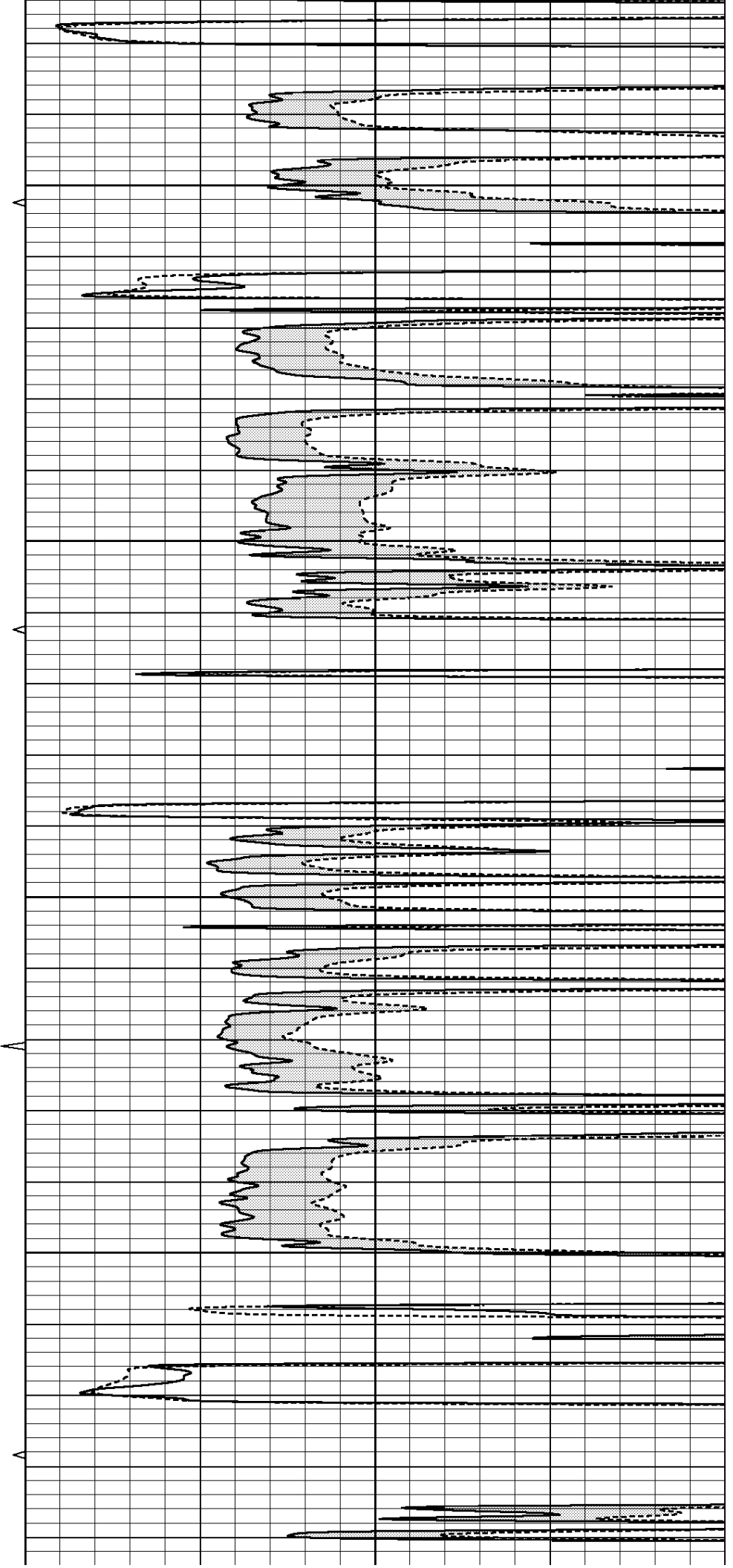


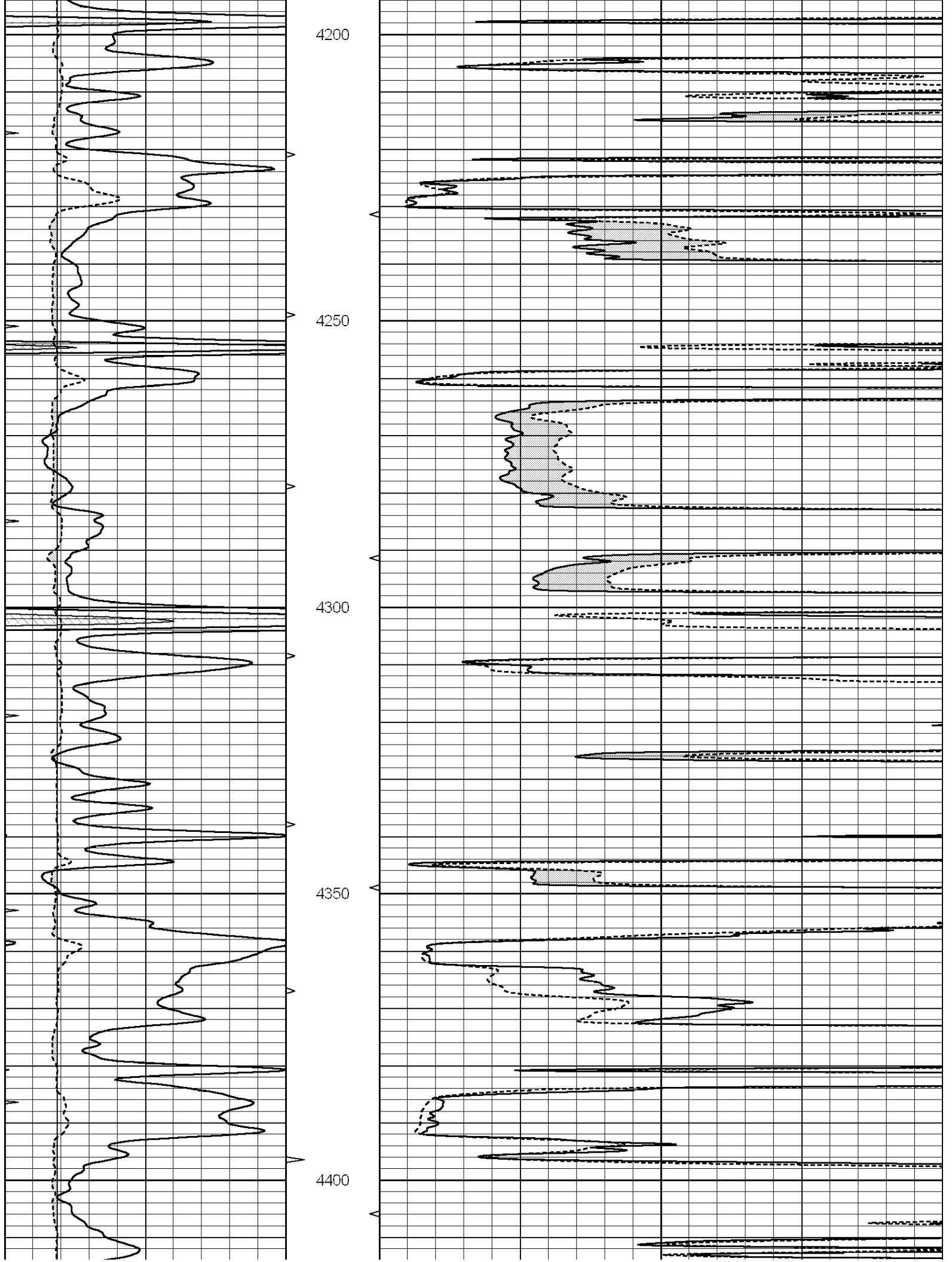
4000

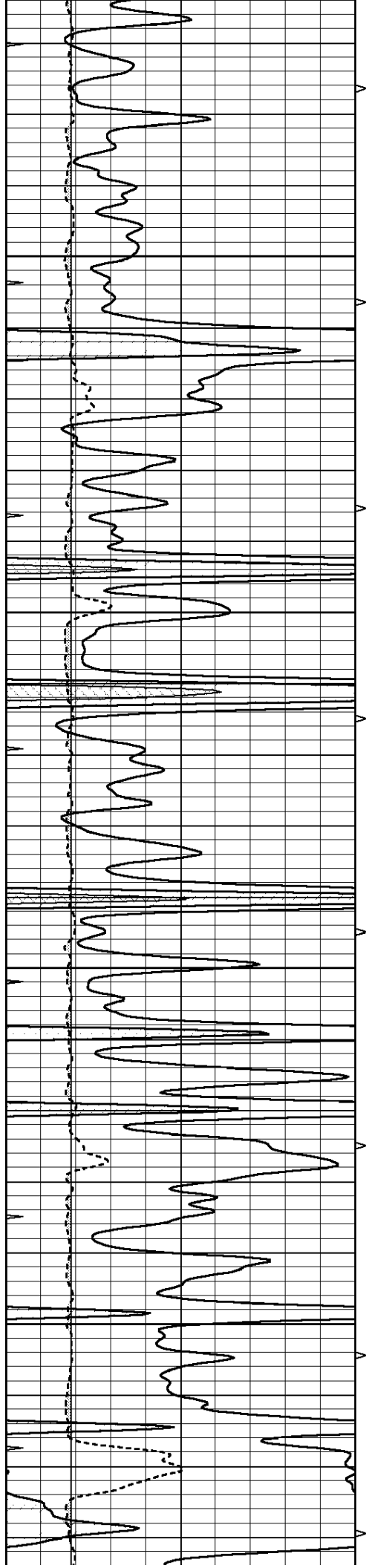
4050

4100

4150





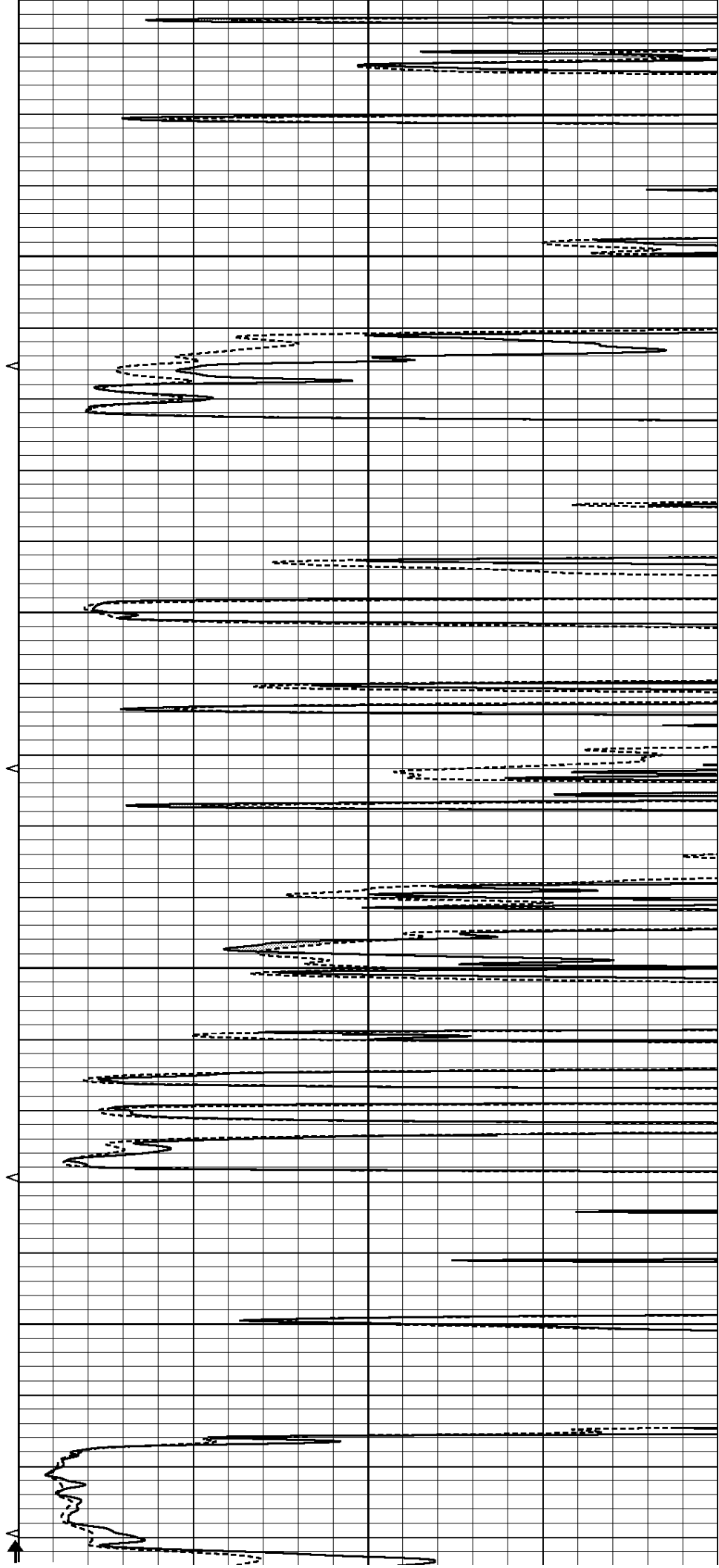


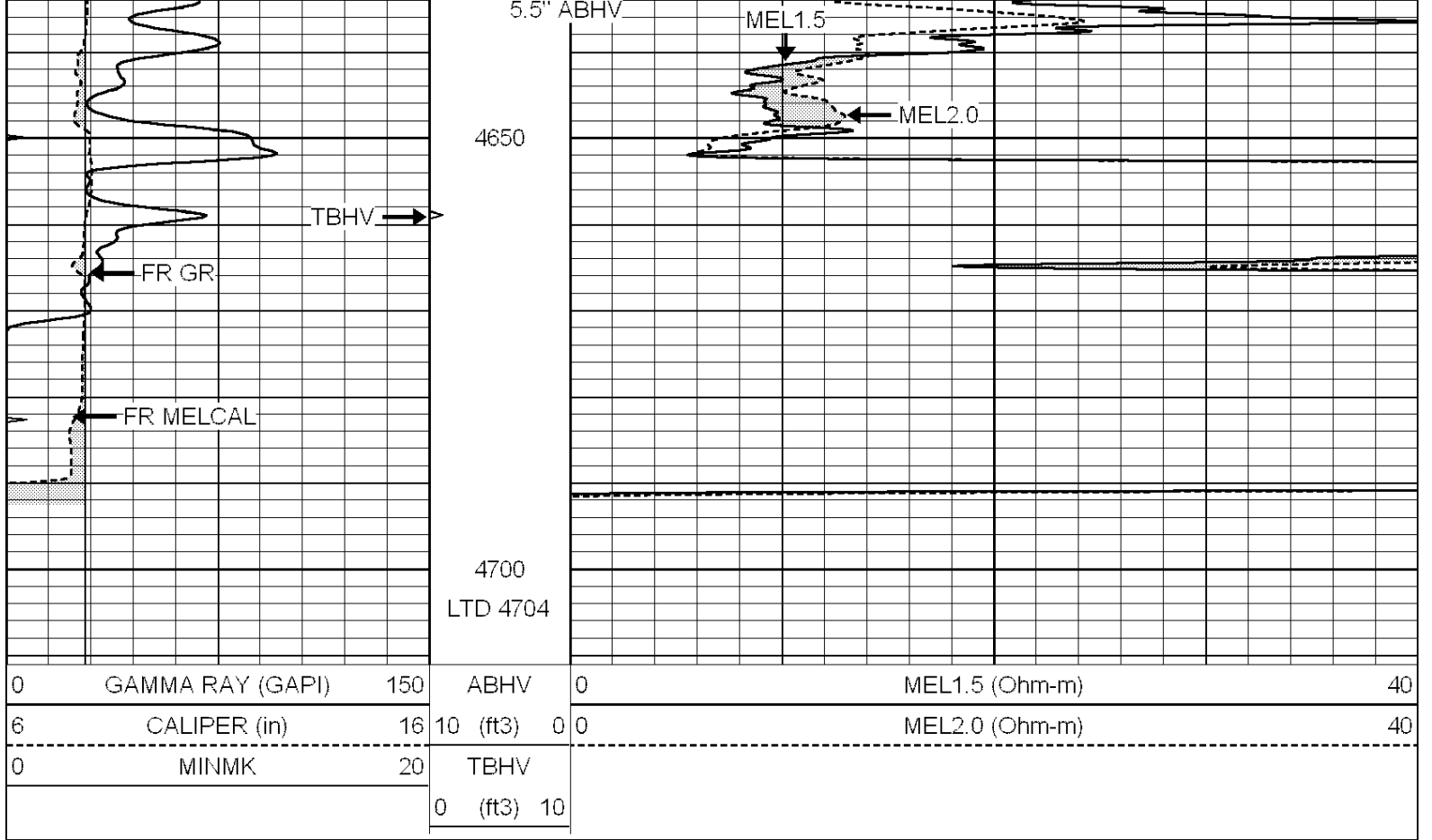
4450

4500

4550

4600

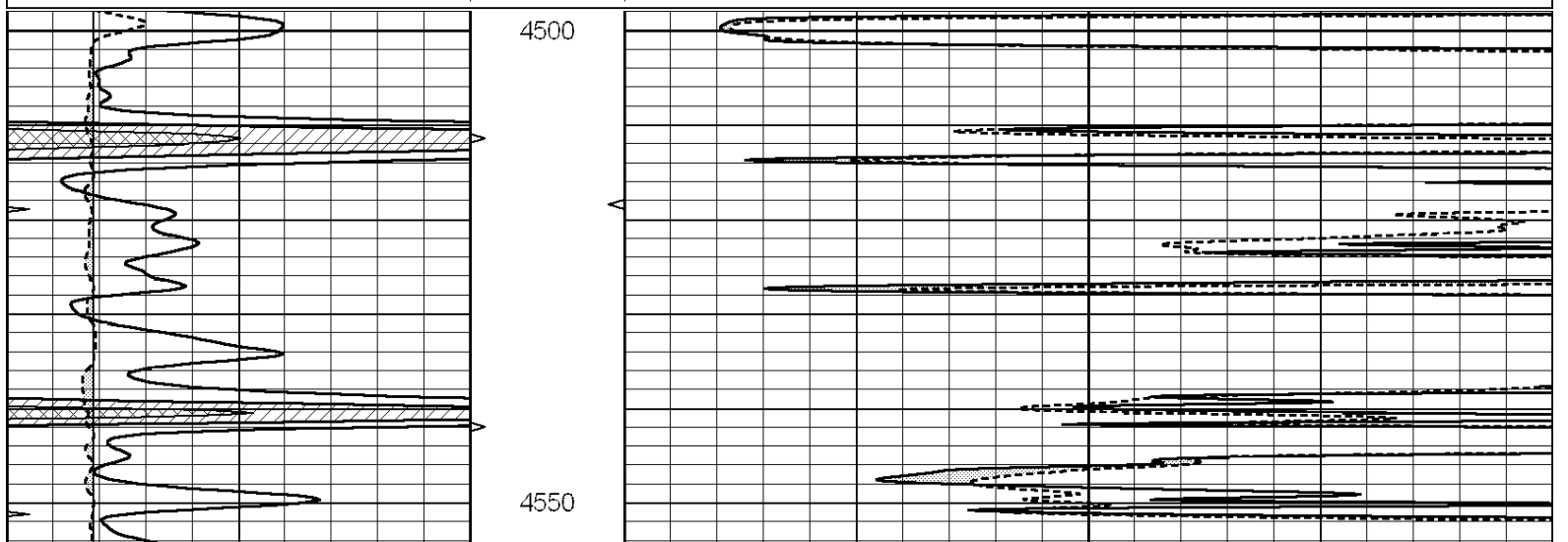


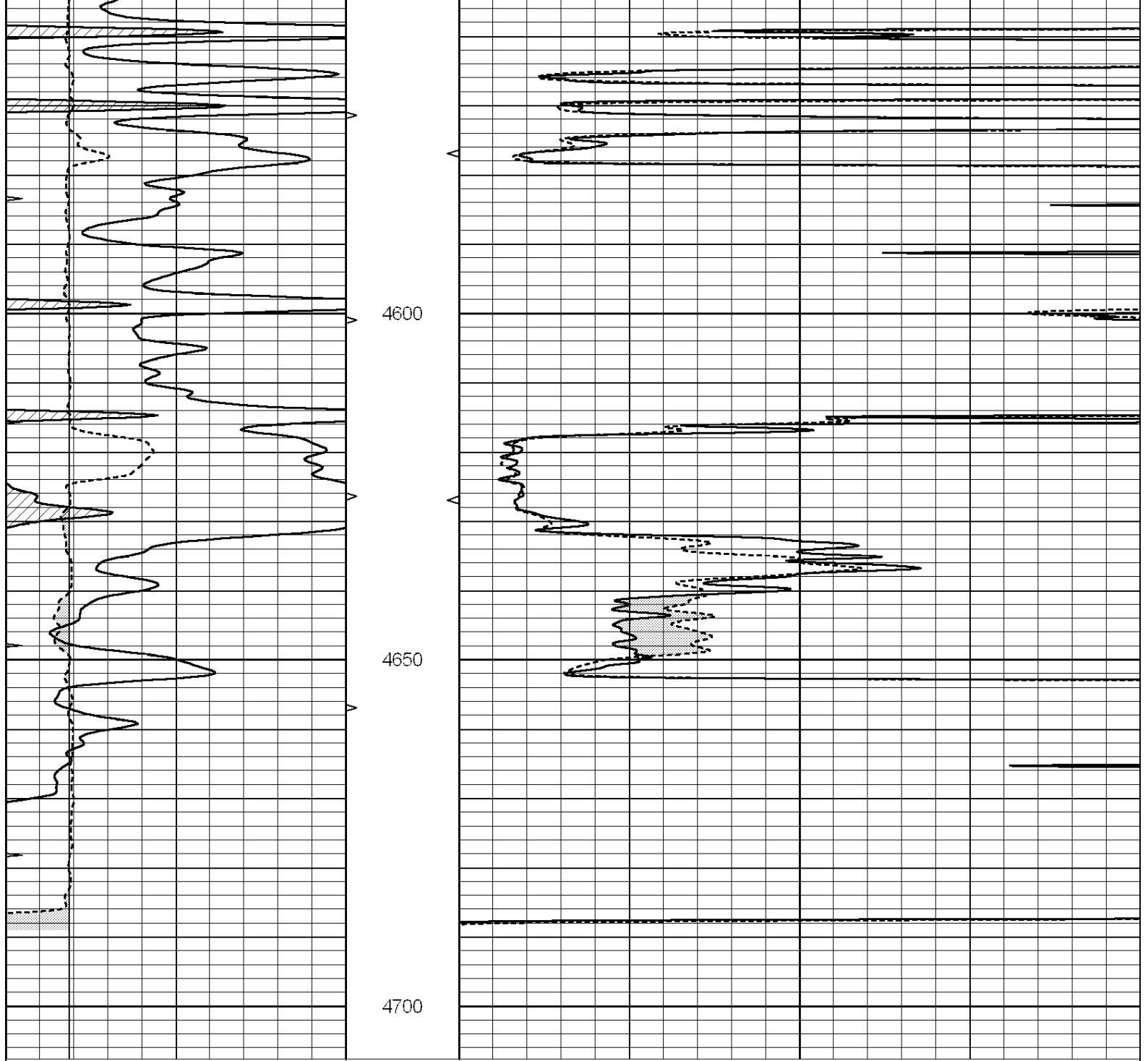


# REPEAT SECTION

Database File: 011820pe.db  
 Dataset Pathname: pass5.3  
 Presentation Format: micro  
 Dataset Creation: Fri Dec 06 05:24:55 2013  
 Charted by: Depth in Feet scaled 1:240

0	GAMMA RAY (GAPI)	150	ABHV	0	MEL1.5 (Ohm-m)	40
6	CALIPER (in)	16	10 (ft3)	0	MEL2.0 (Ohm-m)	40
0	MINMK	20	TBHV			
			0 (ft3)	10		





0	GAMMA RAY (GAPI)	150	ABHV	0	MEL1.5 (Ohm-m)	40
6	CALIPER (in)	16	10 (ft3)	0	MEL2.0 (Ohm-m)	40
0	MINMK	20	TBHV			
			0 (ft3)	10		

Calibration Report

Database File: 011820pe.db  
 Dataset Pathname: pass6.2  
 Dataset Creation: Fri Dec 06 05:44:30 2013

MICRO Calibration Report

Serial Number: MICRO5  
 Tool Model: PROBE  
 Performed: Fri Dec 06 04:10:58 2013

Caliper Calibration: Gain=3.399      Offset=-5.556

References	Low Cal	High Cal
Readings	8.400	15.000
	4.106	6.048
1.5" Calibration:	Gain=42.000	Offset=-1.500
References	Low Cal	High Cal
Readings	0.000	20.000
	0.015	1.005
2" Calibration:	Gain=50.000	Offset=-1.800
References	Low Cal	High Cal
Readings	0.000	20.000
	0.009	0.910
Gamma Ray Calibration Report		
Serial Number:	GR3	
Tool Model:	OPEN	
Performed:	Fri Dec 06 04:59:54 2013	
Calibrator Value:	200.0	GAPI
Background Reading:	3.0	cps
Calibrator Reading:	186.0	cps
Sensitivity:	1.6000	GAPI/cps