



Pioneer Energy Services

Dual Induction Log

15-055-22,258-00-00

API No.

Company American Warrior, Inc.

Well Congdon #7-28

Field Congdon

County Finney State Kansas

Location SE NW SE SW
694' FSL & 1683' FWL

Sec: 28 Twp: 23S Rge: 32W

Other Services
CNL/CDL
MEL/BHCS

Permanent Datum Ground Level Elevation 2841

Log Measured From Kelly Bushing 11 Ft. Above Perm. Datum

Drilling Measured From Kelly Bushing

Elevation
K.B. 2852
D.F. 2841
G.L. 2841

Date	3/10/2014
Run Number	One
Depth Driller	4875
Depth Logger	4875
Bottom Logged Interval	4874
Top Log Interval	1700
Casing Driller	8.625 @ 1744
Casing Logger	1745
Bit Size	7.875
Type Fluid in Hole	Chemical
Salinity, ppm CL	2400
Density / Viscosity	9.5 57
pH / Fluid Loss	10.0 6.4
Source of Sample	Flowline
Rm @ Meas. Temp	1.10 @ 74
Rmf @ Meas. Temp	0.83 @ 74
Rmc @ Meas. Temp	1.49 @ 74
Source of Rmf / Rmc	Charts
Rm @ BHT	0.65 @ 125
Operating Rig Time	5 Hours
Max Rec. Temp. F	125
Equipment Number	15
Location	Hays
Recorded By	D.Kerr
Witnessed By	Kevin Timson

<<< Fold Here >>>

All interpretations are opinions based on inferences from electrical or other measurements and we cannot and do not guarantee the accuracy or correctness of any interpretation, and we shall not, except in the case of gross or willful negligence on our part, be liable or responsible for any loss, costs, damages, or expenses incurred or sustained by anyone resulting from any interpretation made by any of our officers, agents or employees. These interpretations are also subject to our general terms and conditions set out in our current Price Schedule.

Comments

Thank you for using Log-Tech, Inc.
(785) 625-3858

Garden City KS, HWY 156 and Mary AVE.
North to Jenni Barker RD, 1 1/2 North, 1/2 West, North Into

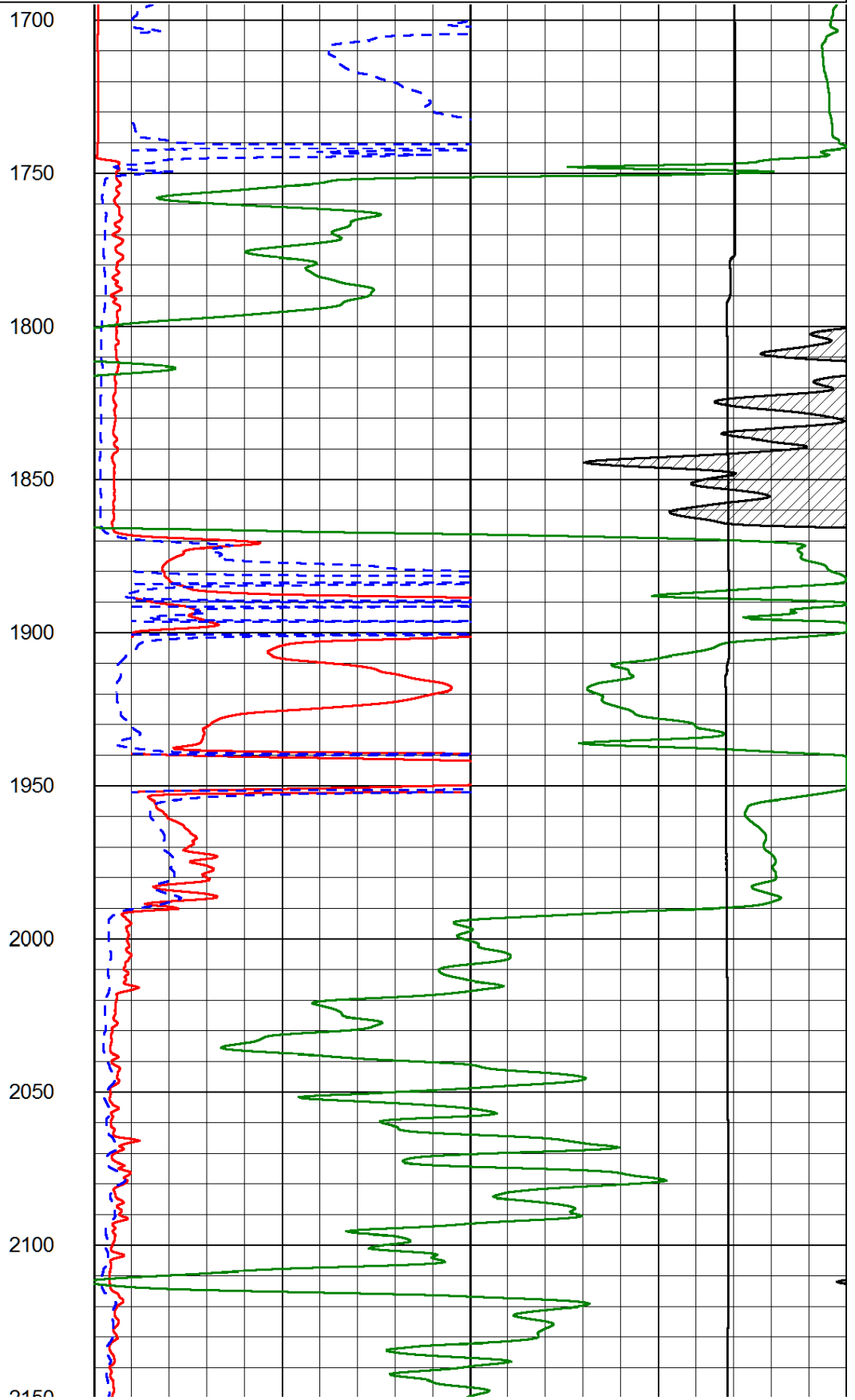
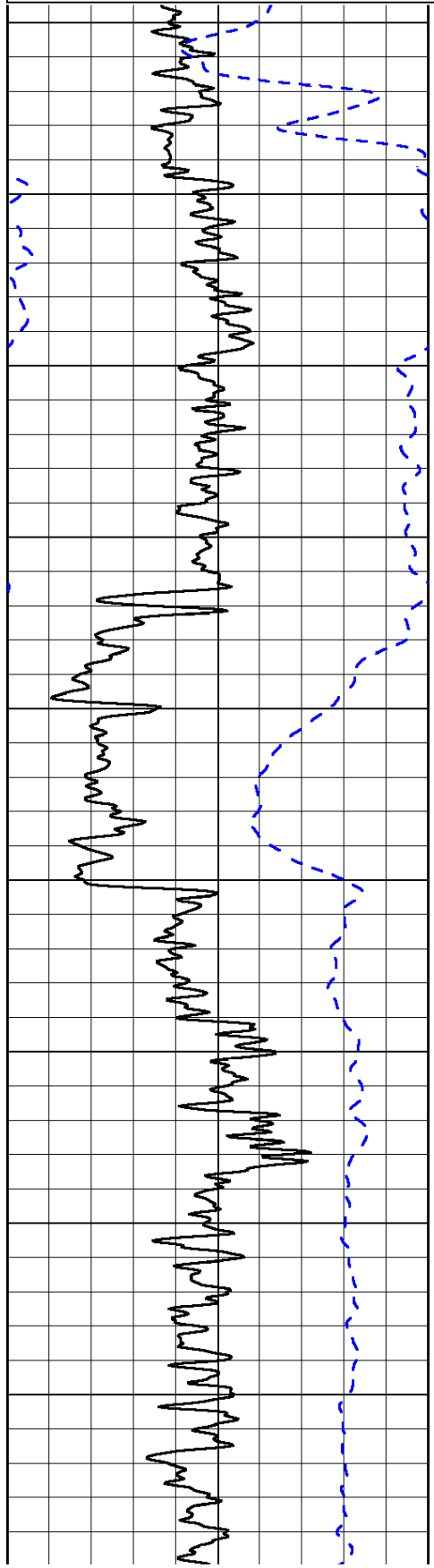
Database File: americanwarrior_congdon_7_28hd.db
 Dataset Pathname: DIL/awstk
 Presentation Format: dil2in
 Dataset Creation: Mon Mar 10 14:42:03 2014
 Charted by: Depth in Feet scaled 1:600

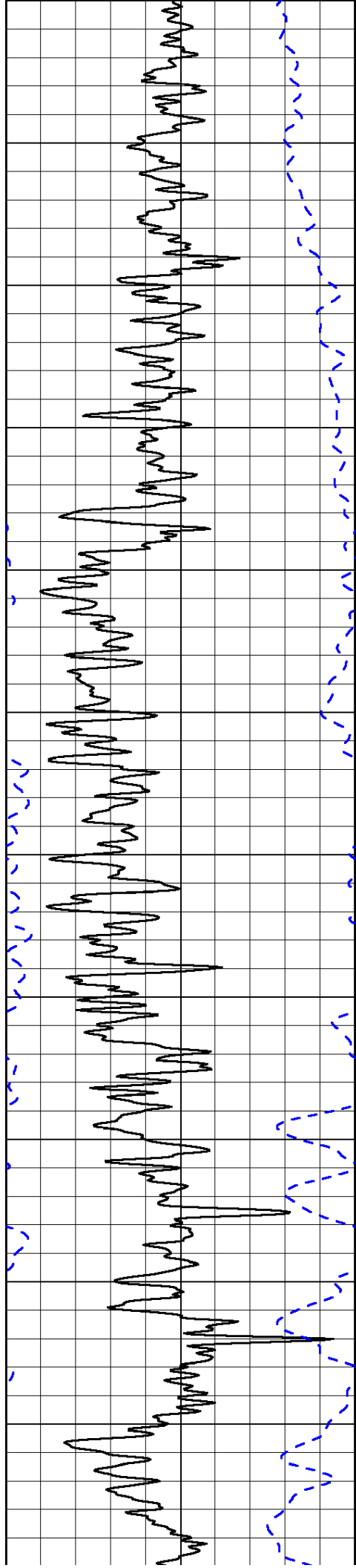
0	Gamma Ray (GAPI)	150
-200	SP (mV)	0

0	Shallow Resistivity (Ohm-m)	50
0	Deep Resistivity (Ohm-m)	50

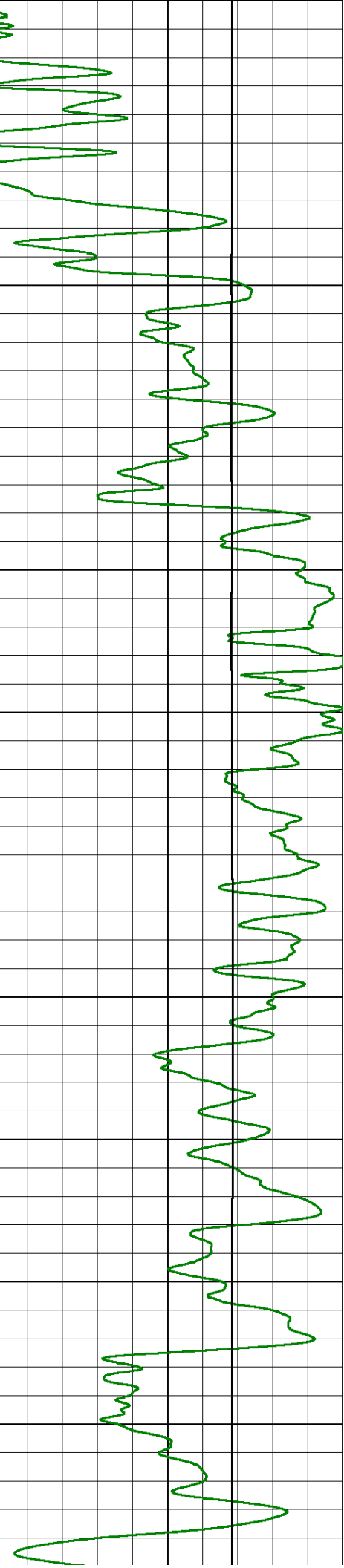
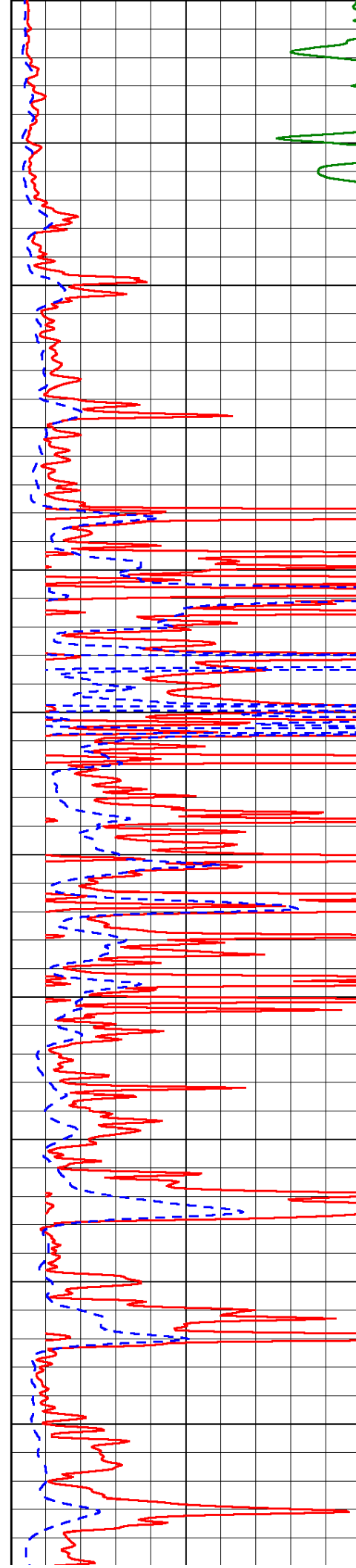
1000	Conductivity (Ohm-m)	0
15000	Line Tension (lb)	0

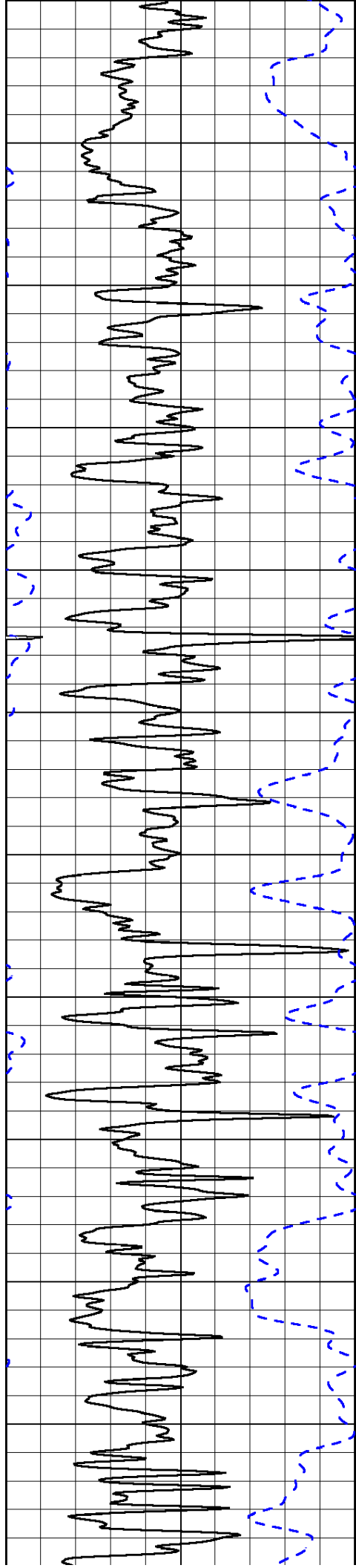
Shallow Resistivity		
50	(Ohm-m)	500
50	Deep Resistivity (Ohm-m)	500



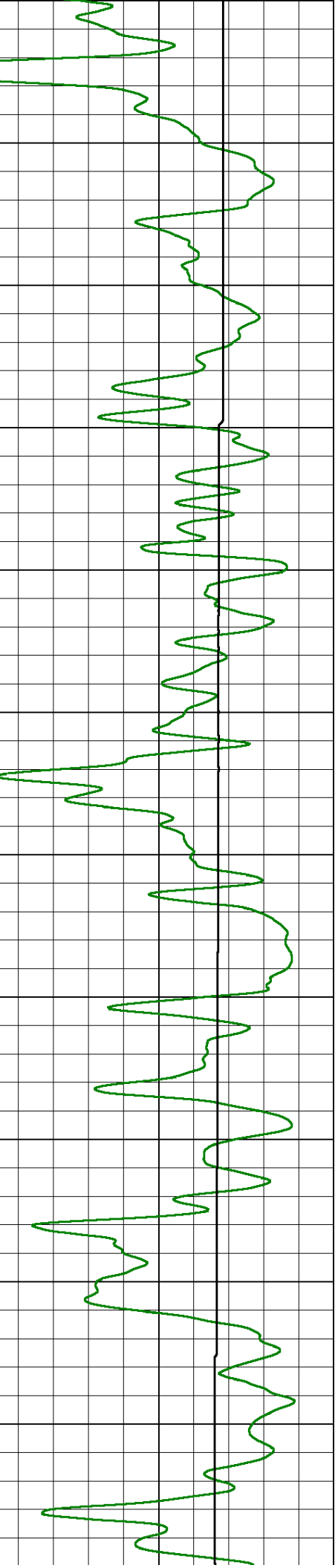
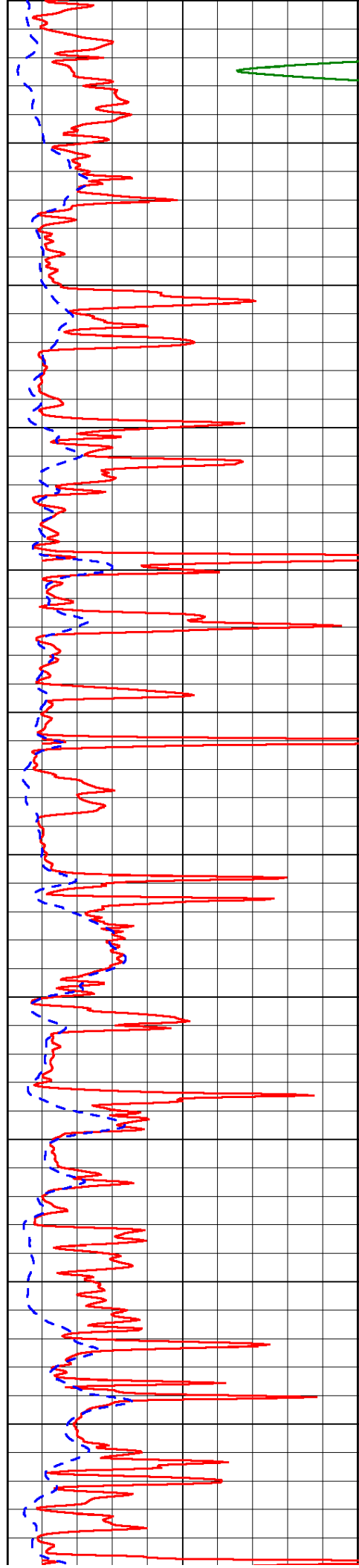


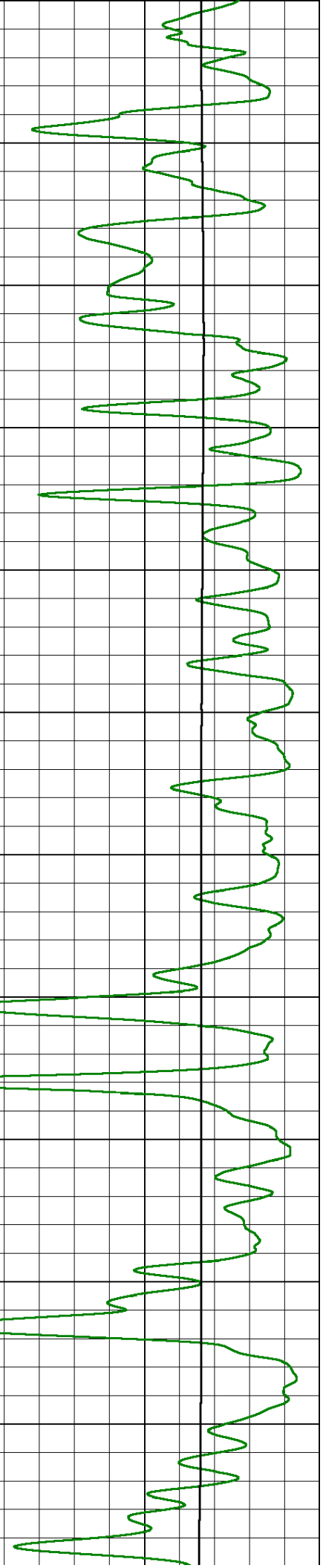
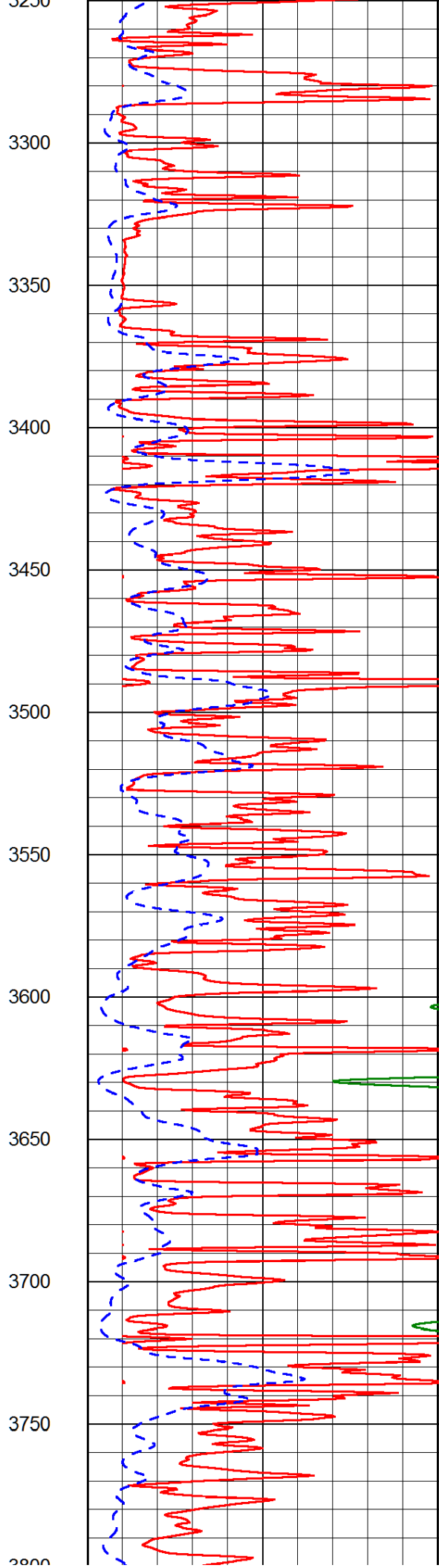
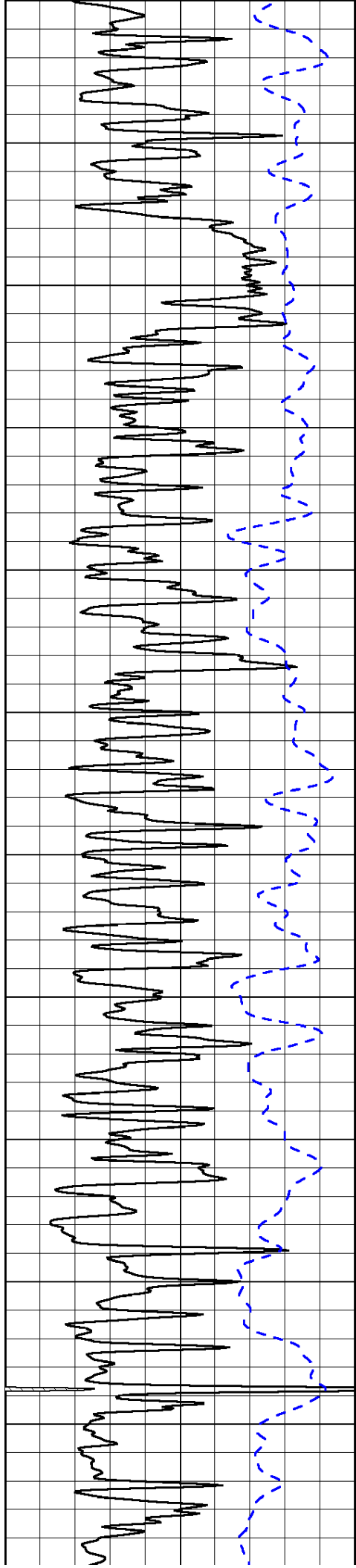
2150
2200
2250
2300
2350
2400
2450
2500
2550
2600
2650
2700

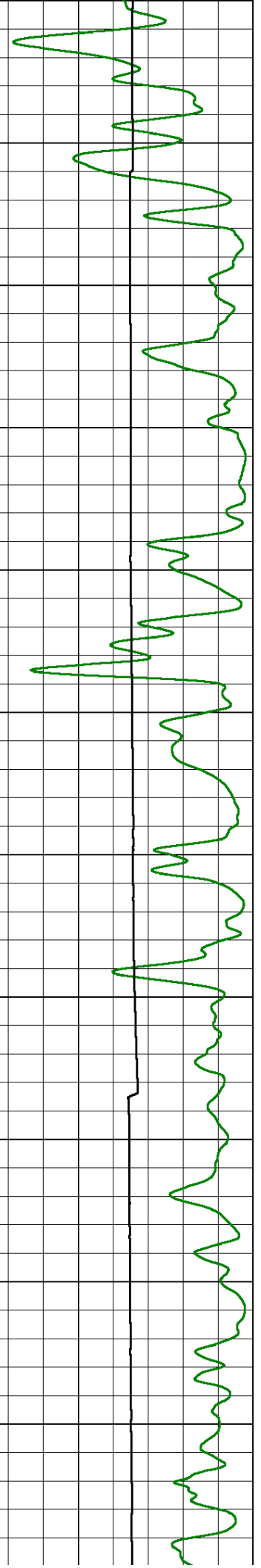
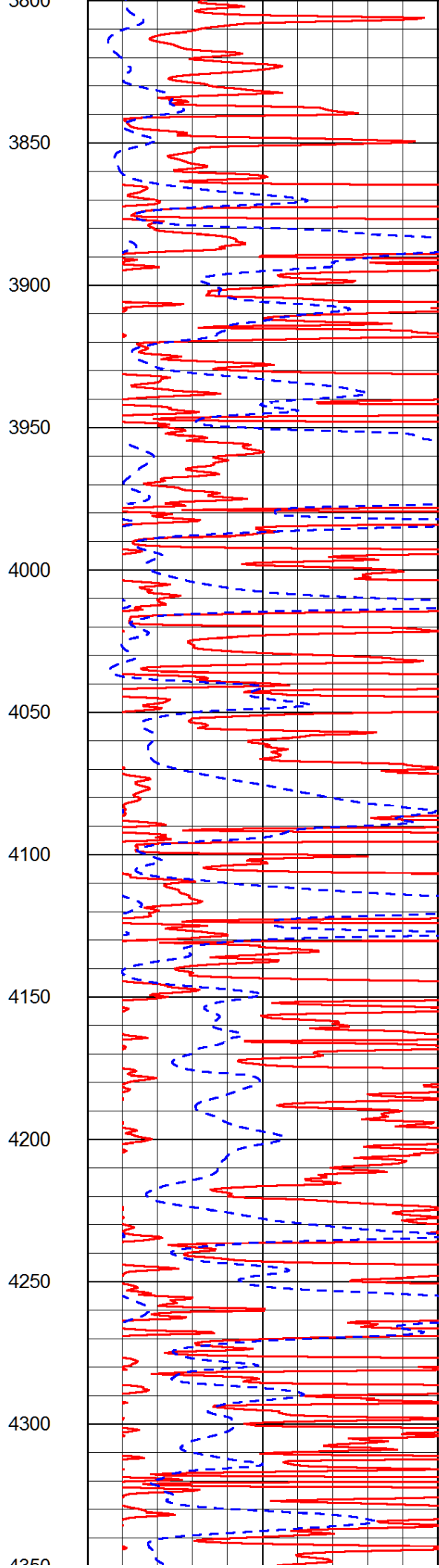
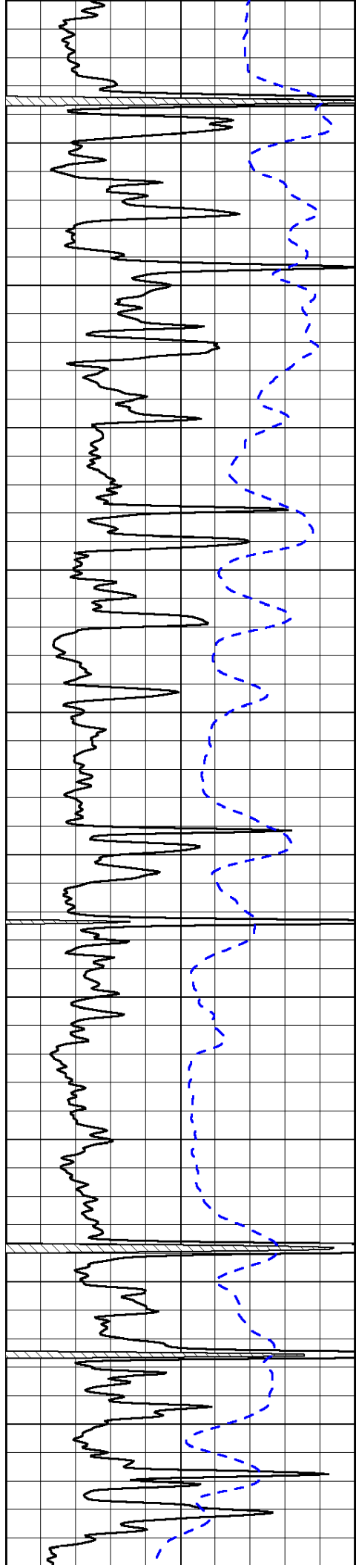


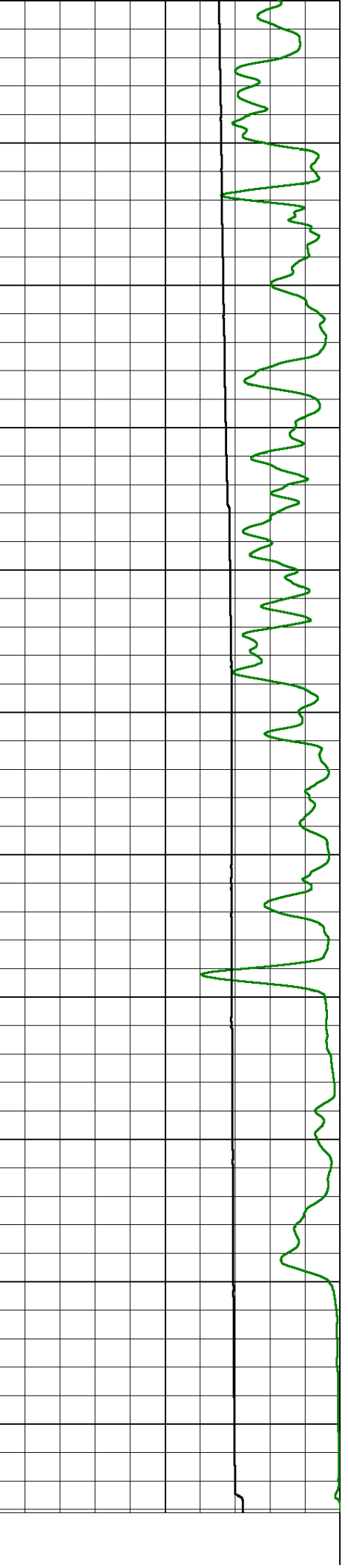
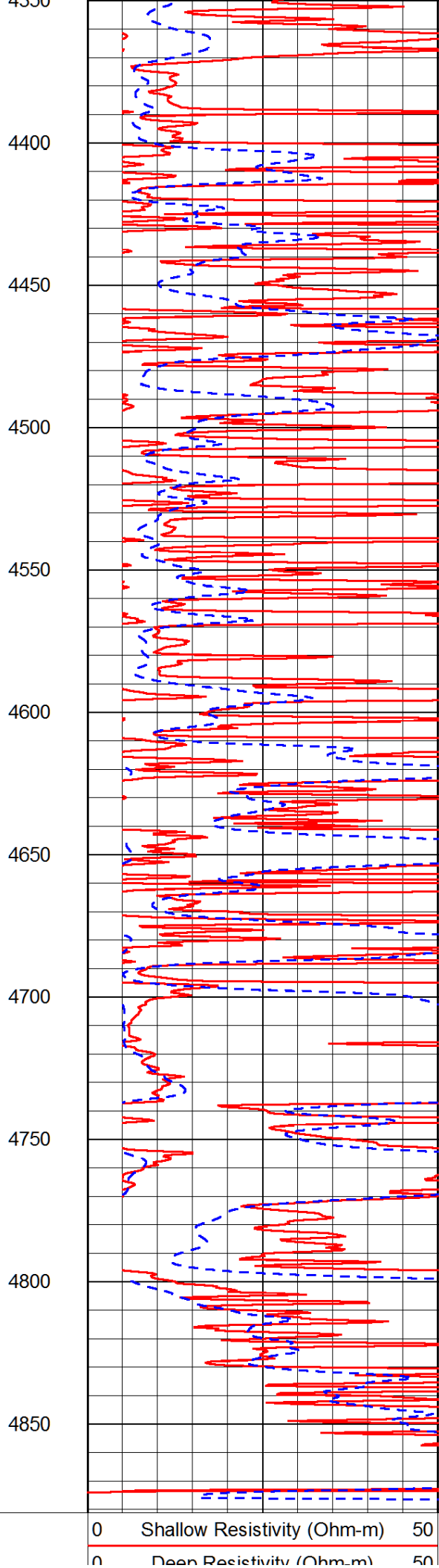
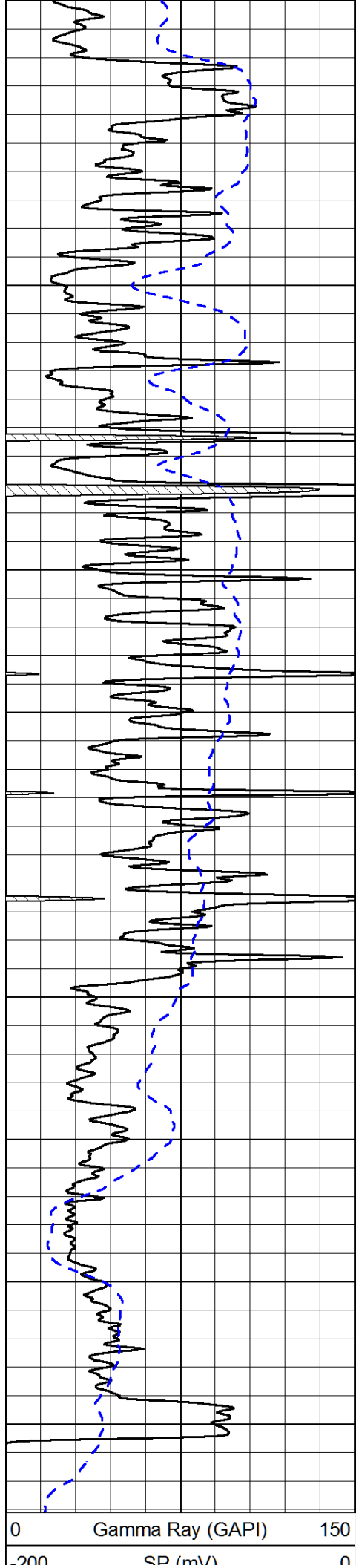


2700
2750
2800
2850
2900
2950
3000
3050
3100
3150
3200
3250









200	SP (mV)	0
-----	---------	---

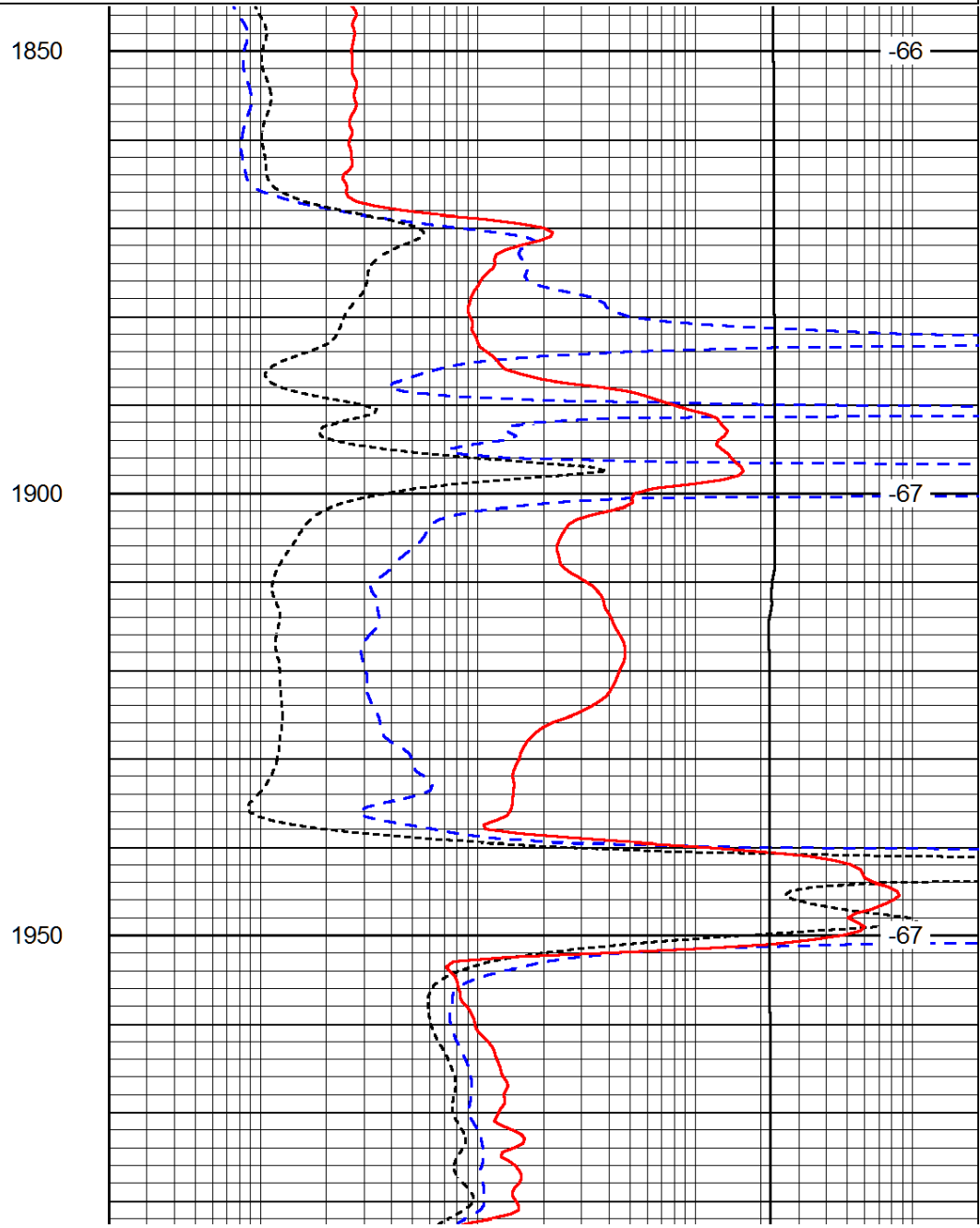
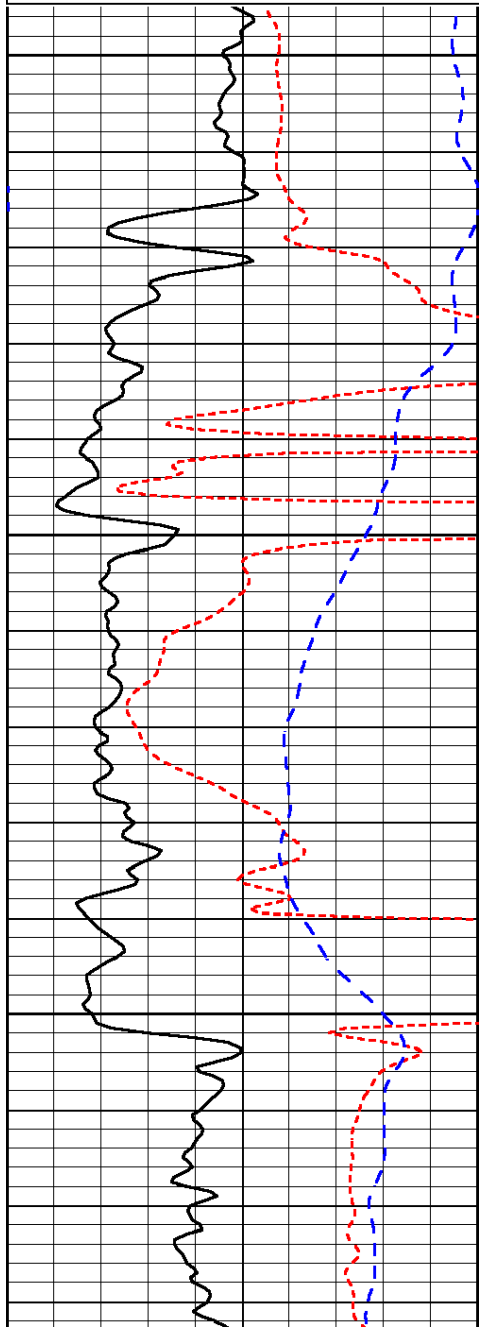
0	Deep Resistivity (Ohm-m)	50
1000	Conductivity (Ohm-m)	0
15000	Line Tension (lb)	0
Shallow Resistivity		
50	(Ohm-m)	500
50	Deep Resistivity (Ohm-m)	500

Database File: americanwarrior_congdon_7_28hd.db
 Dataset Pathname: DIL/awstk
 Presentation Format: dil
 Dataset Creation: Mon Mar 10 14:42:03 2014
 Charted by: Depth in Feet scaled 1:240

0	Gamma Ray (GAPI)	150
-160	RXO/RT	40
-200	SP (mV)	0

0.2	Deep Resistivity (Ohm-m)	2000
0.2	Medium Resistivity (Ohm-m)	2000
0.2	Shallow Resistivity (Ohm-m)	2000
10000	Line Tension (lb)	0

LSPD
(ft/min)



1850

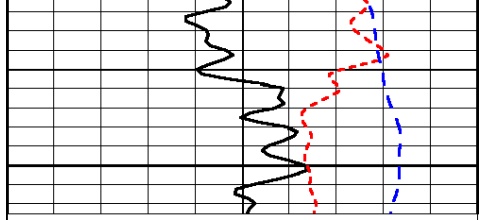
1900

1950

-66

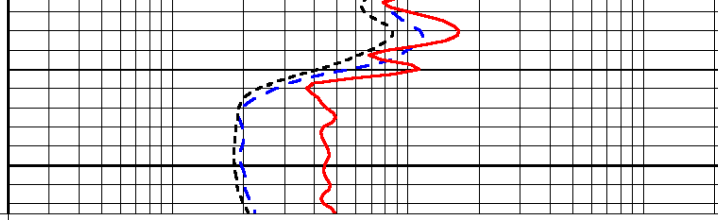
-67

-67



2000

0	Gamma Ray (GAPI)	150
-160	RXO/RT	40
-200	SP (mV)	0



-66

0.2	Deep Resistivity (Ohm-m)	2000
0.2	Medium Resistivity (Ohm-m)	2000
0.2	Shallow Resistivity (Ohm-m)	2000
10000	Line Tension (lb)	0

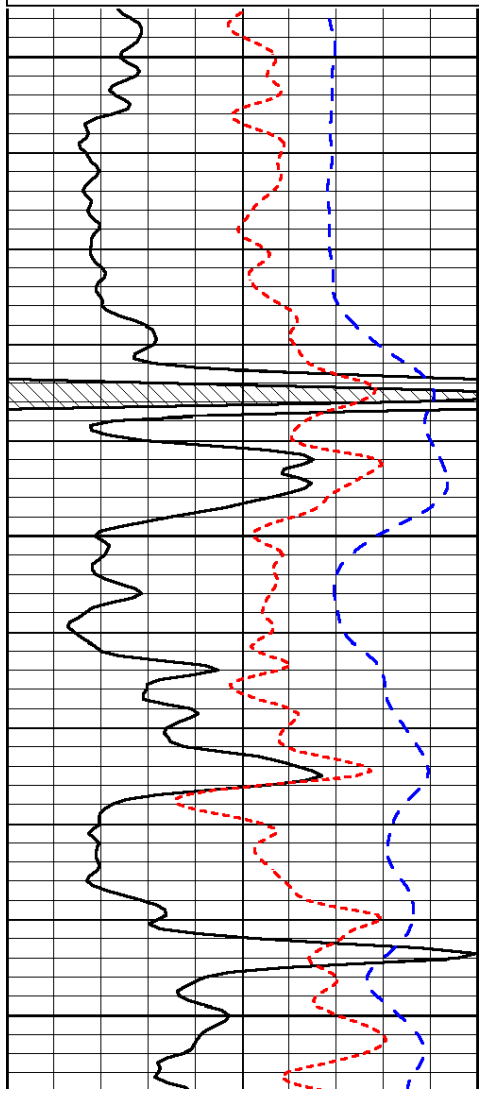
LSPD
(ft/min)

Database File: americanwarrior_congdon_7_28hd.db
 Dataset Pathname: DIL/awstk
 Presentation Format: dil
 Dataset Creation: Mon Mar 10 14:42:03 2014
 Charted by: Depth in Feet scaled 1:240

0	Gamma Ray (GAPI)	150
-160	RXO/RT	40
-200	SP (mV)	0

0.2	Deep Resistivity (Ohm-m)	2000
0.2	Medium Resistivity (Ohm-m)	2000
0.2	Shallow Resistivity (Ohm-m)	2000
10000	Line Tension (lb)	0

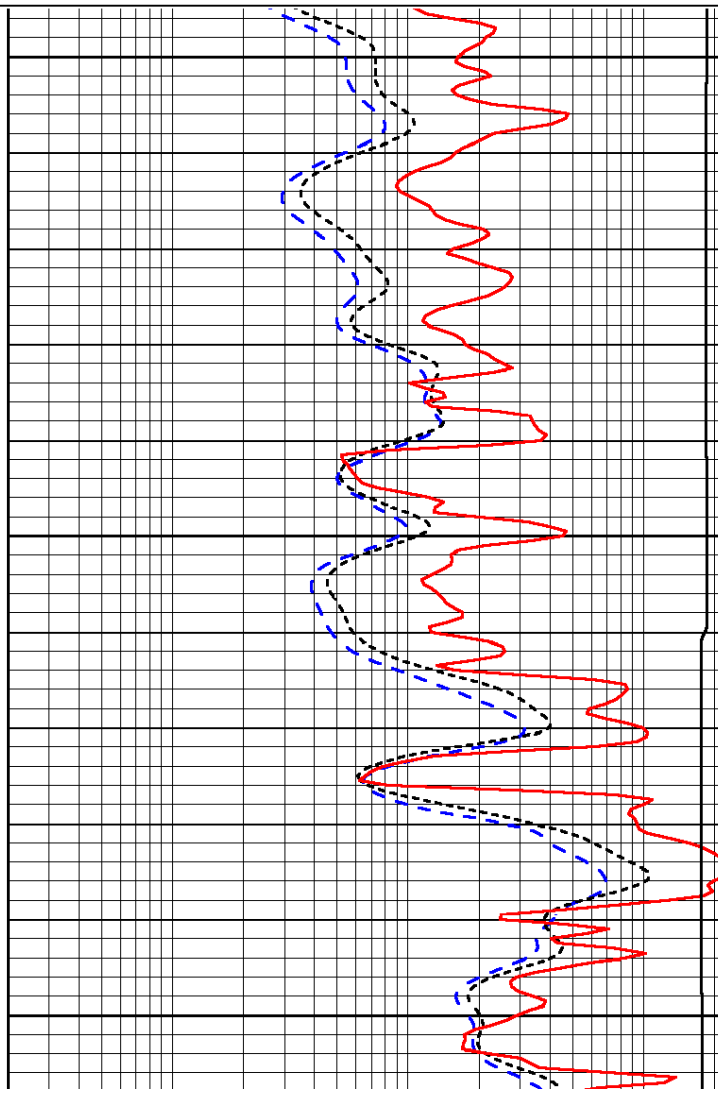
LSPD
(ft/min)



3800

3850

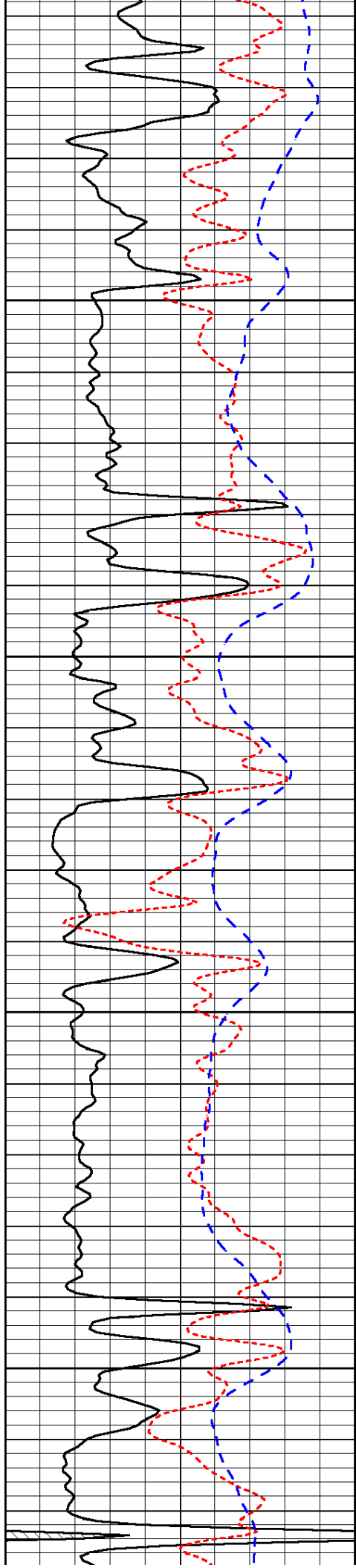
3900



-32

-32

-32

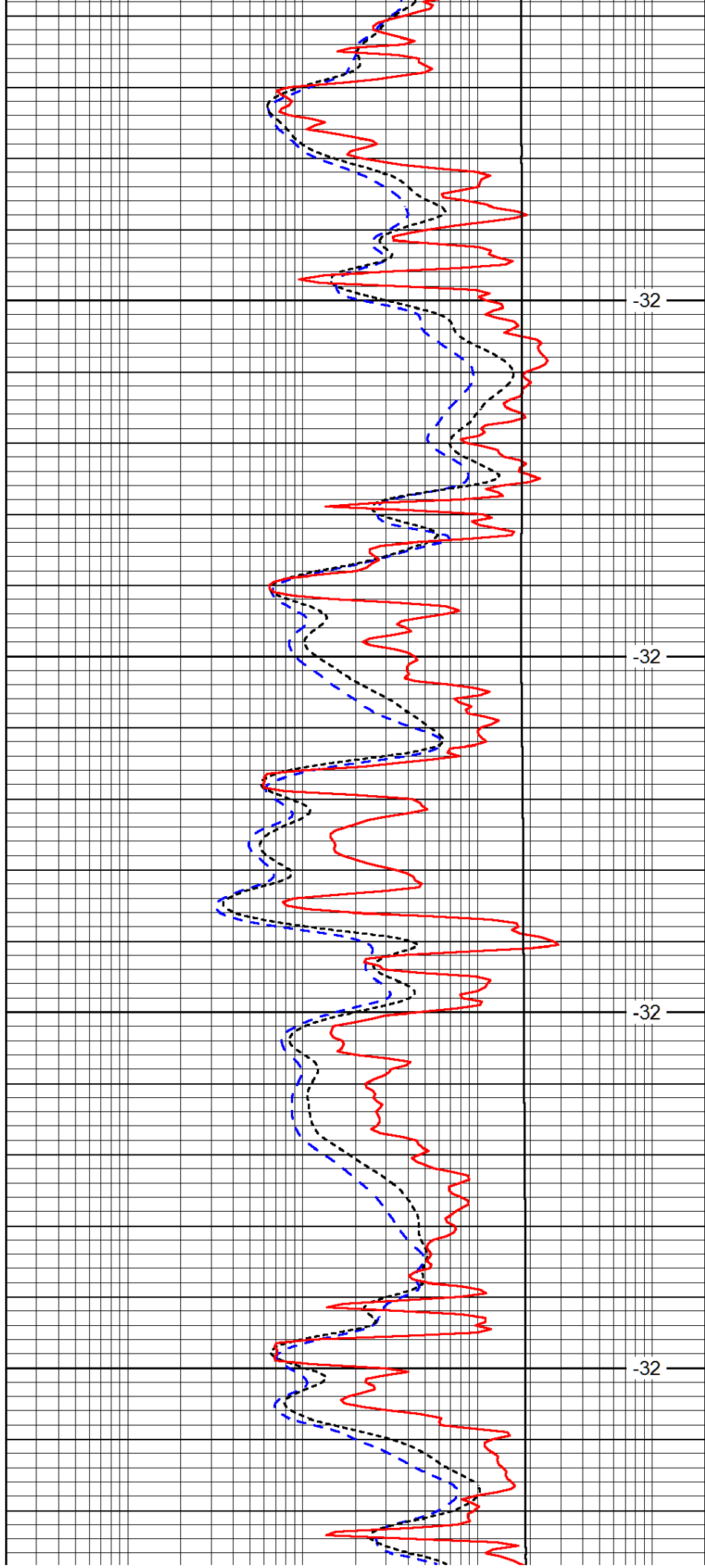


3950

4000

4050

4100

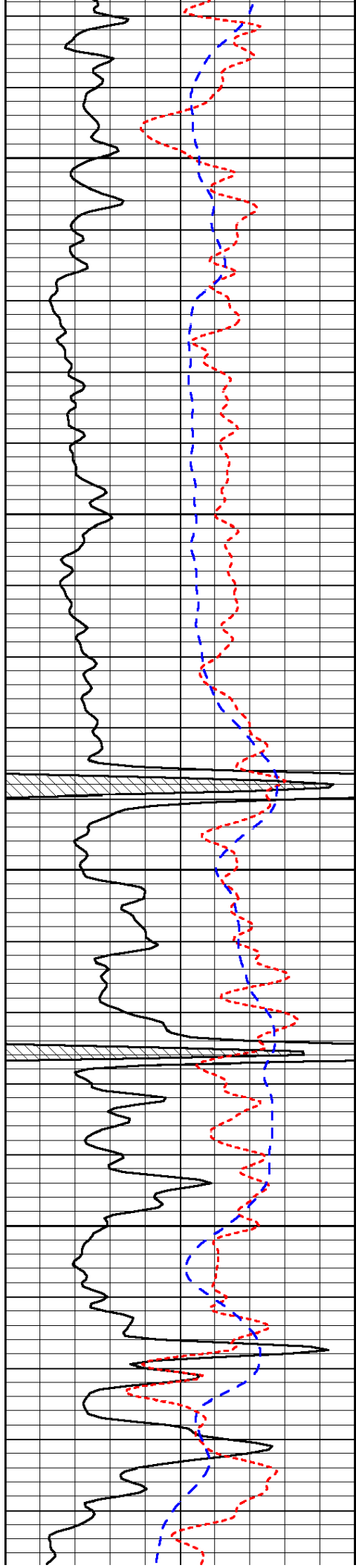


-32

-32

-32

-32

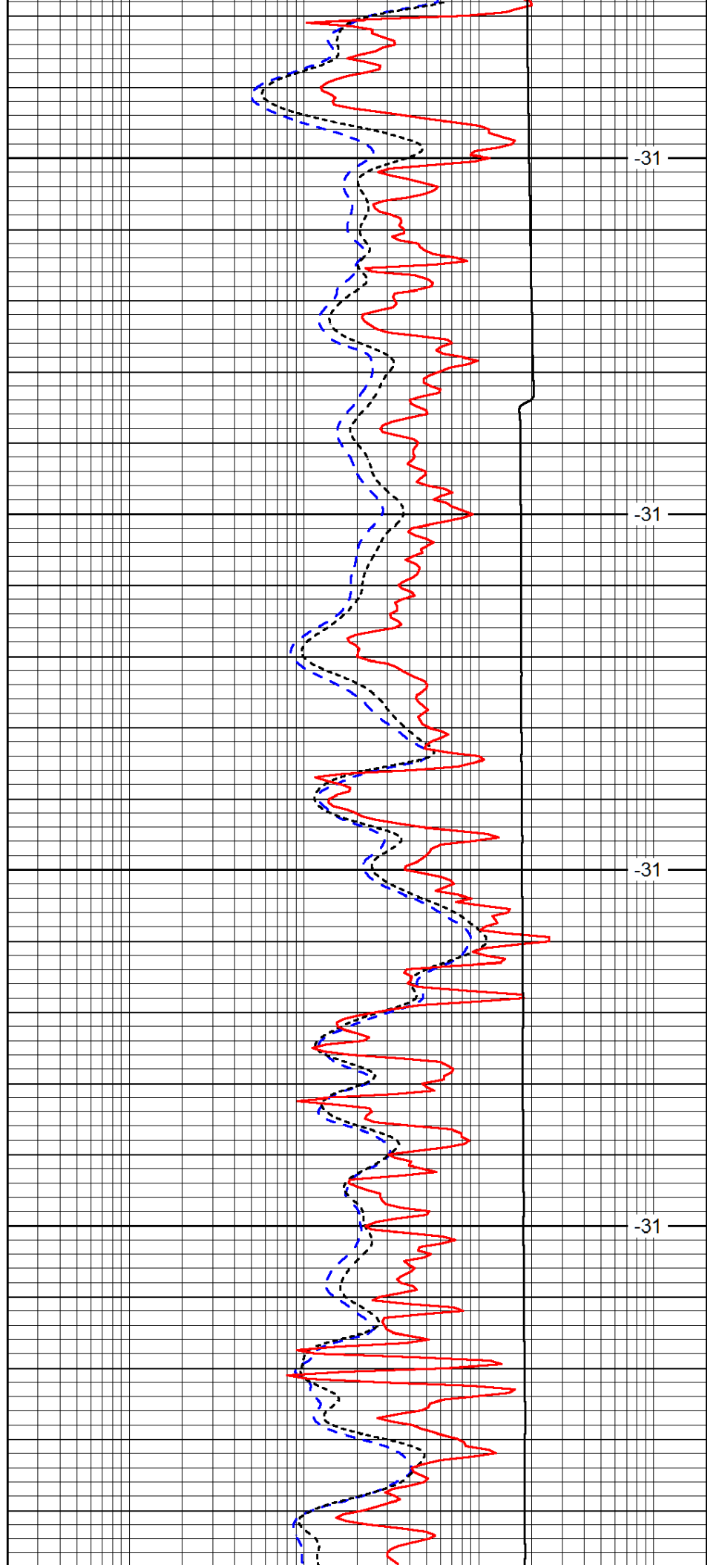


4150

4200

4250

4300

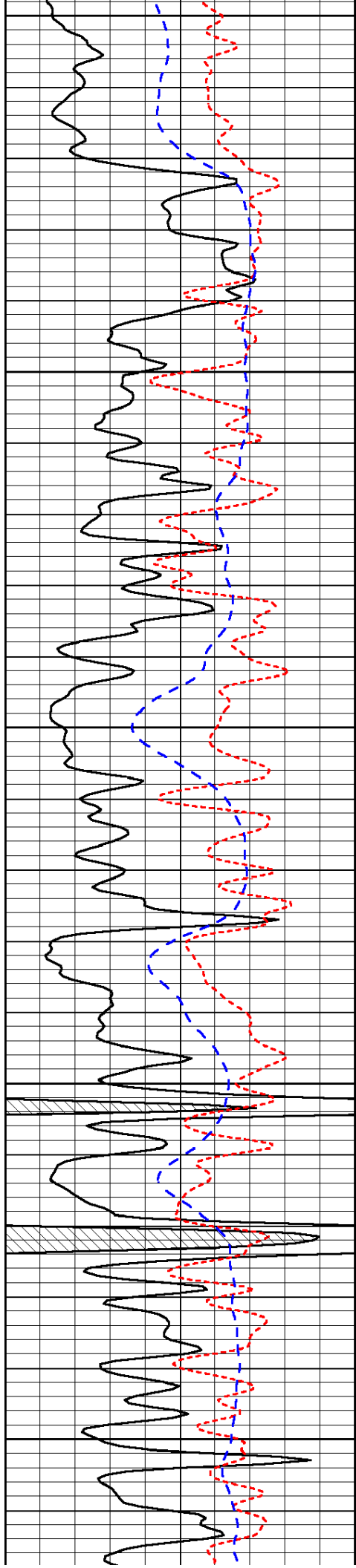


-31

-31

-31

-31



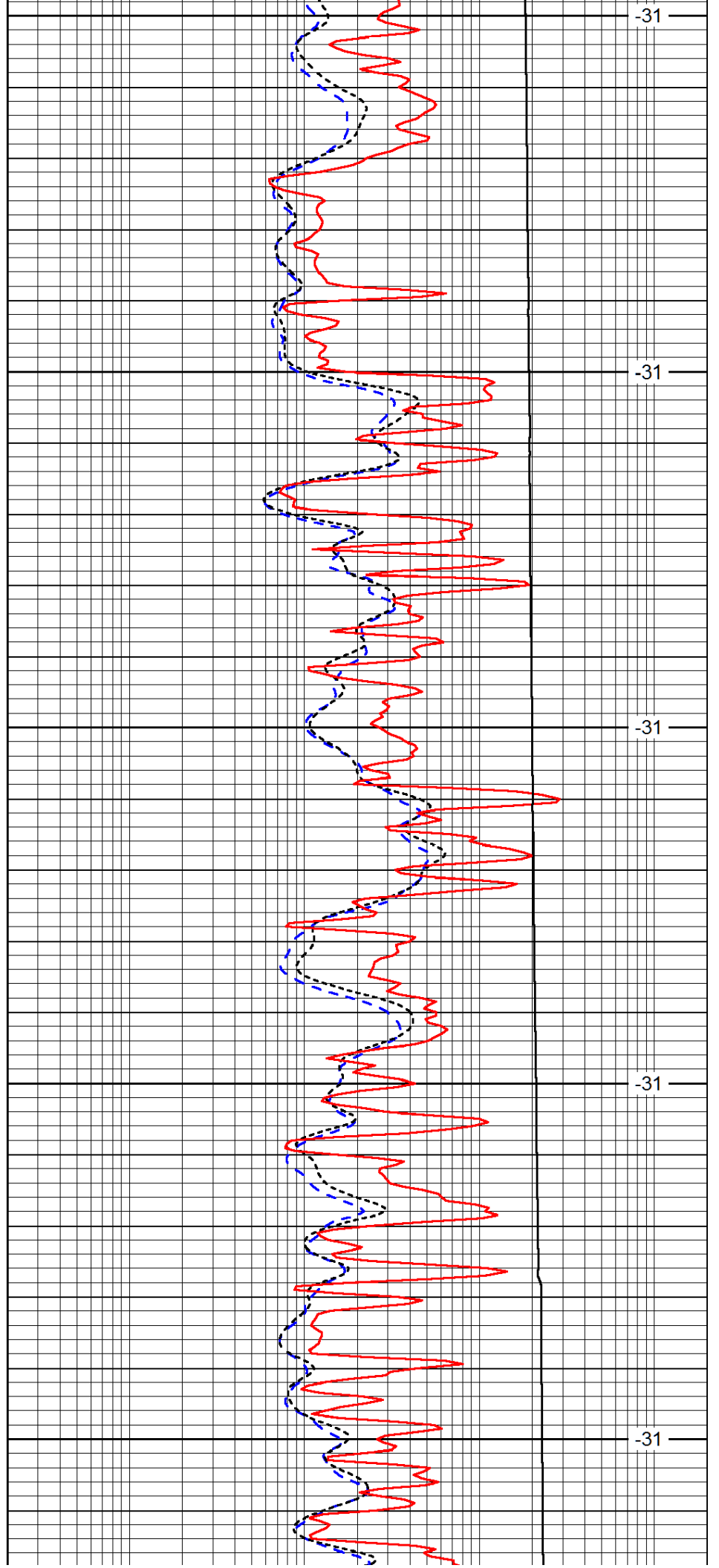
4350

4400

4450

4500

4550



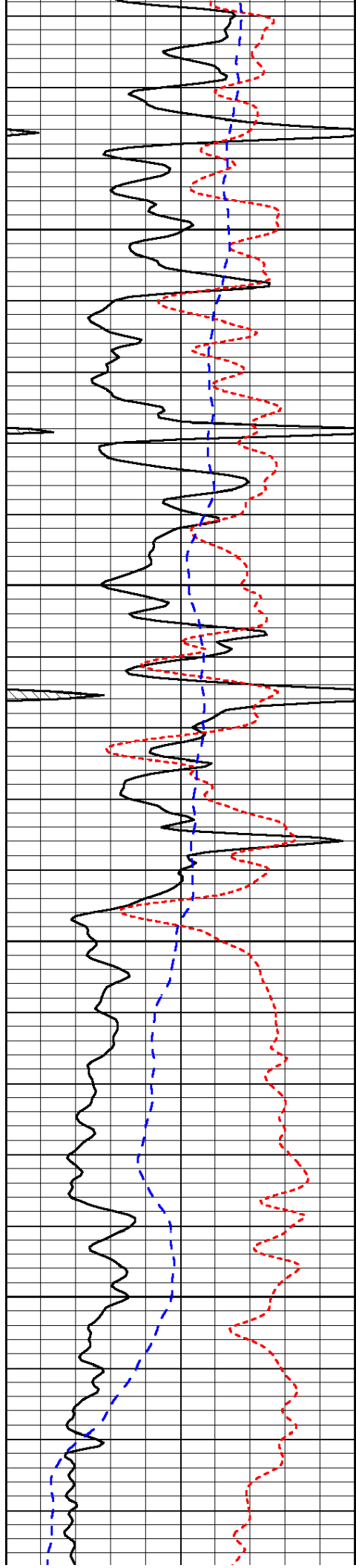
-31

-31

-31

-31

-31

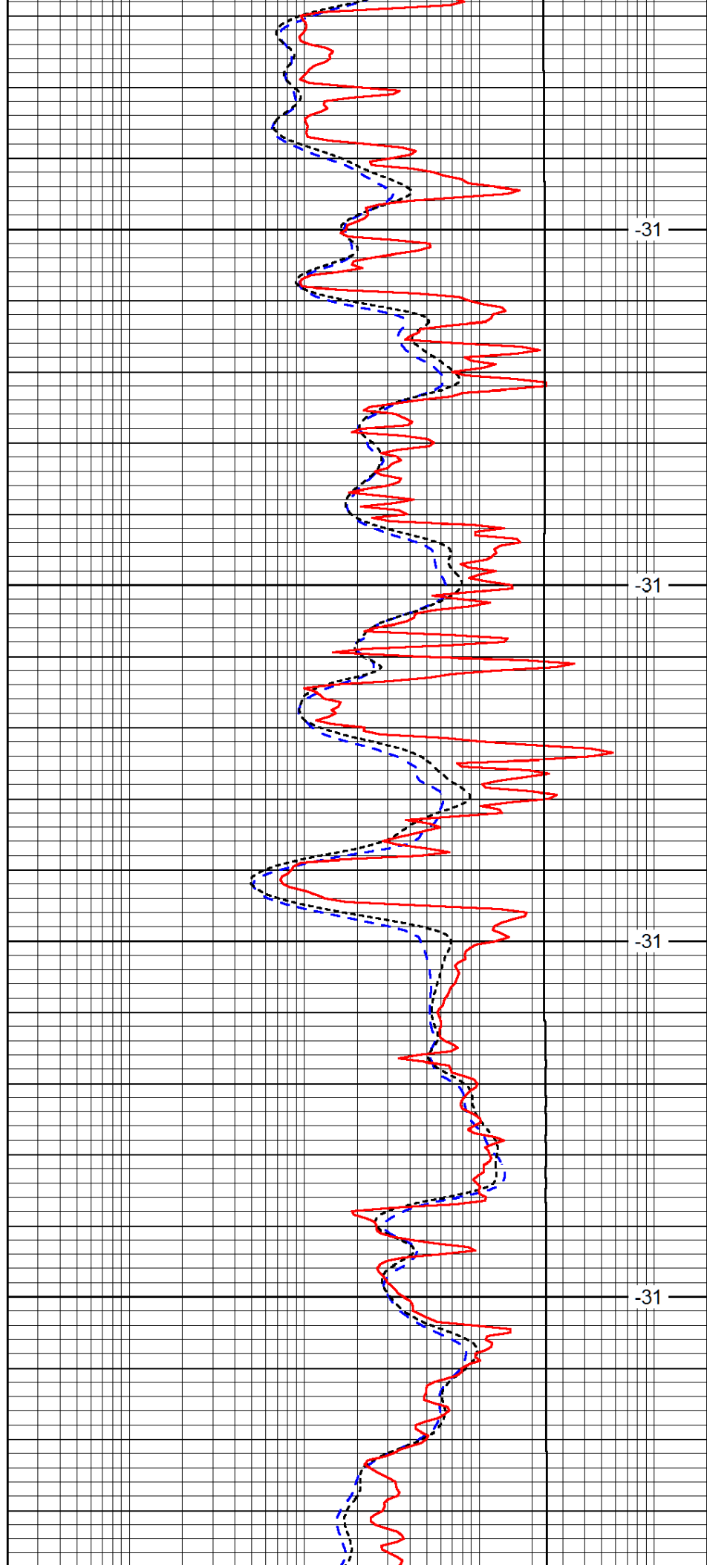


4600

4650

4700

4750

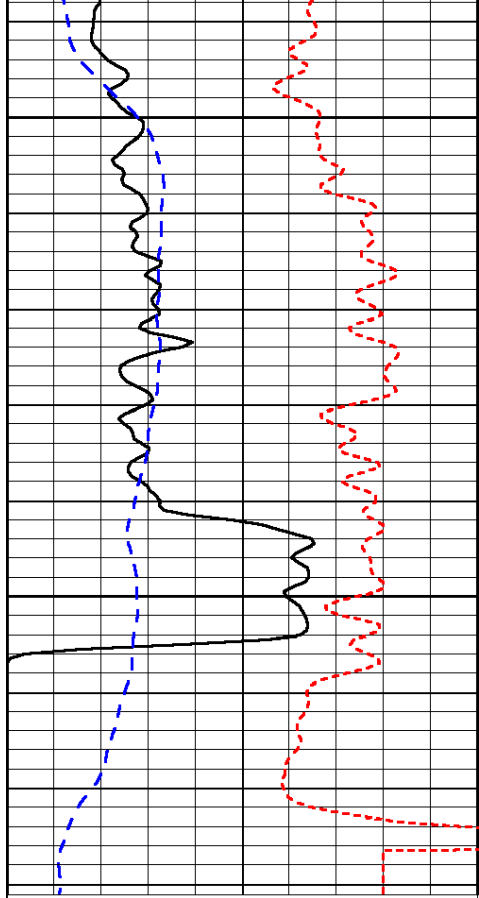


-31

-31

-31

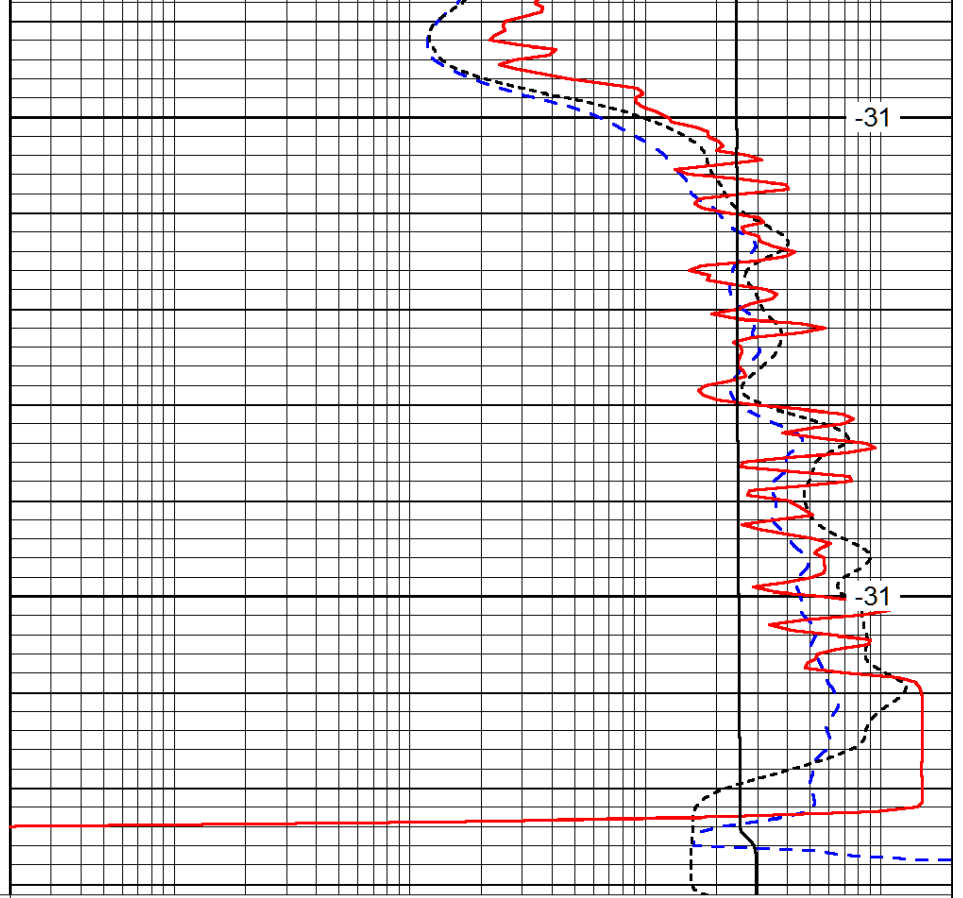
-31



0	Gamma Ray (GAPI)	150
-160	RXO/RT	40
-200	SP (mV)	0

4800

4850



-31

-31

0.2	Deep Resistivity (Ohm-m)	2000
0.2	Medium Resistivity (Ohm-m)	2000
0.2	Shallow Resistivity (Ohm-m)	2000
10000	Line Tension (lb)	0

LSPD
(ft/min)