



Pioneer Energy Services

Dual Compensated Porosity Log

API No.	15-055-22,258-00-00		
Company	American Warrior, Inc.		
Well	Congdon #7-28		
Field	Congdon		
County	Finney		
State	Kansas		
Location	SE NW SE SW 694' FSL & 1683' FWL		
Sec: 28	Twp: 23S	Rge: 32W	
Permanent Datum	Ground Level	Elevation 2841	
Log Measured From	Kelly Bushing	11 Ft. Above Perm. Datum	
Drilling Measured From	Kelly Bushing		
Date	3/10/2014		
Run Number	One		
Type Log	CNL / CDL		
Depth Driller	4875		
Depth Logger	4875		
Bottom Logged Interval	4854		
Top Logged Interval	3800		
Type Fluid In Hole	Chemical		
Salinity, PPM CL	2400		
Density	9.5		
Level	Full		
Max. Rec. Temp. F	125		
Operating Rig Time	5 Hours		
Equipment -- Location	15 Days		
Recorded By	D Kerr		
Witnessed By	Kevin Timson		

Borehole Record				Casing Record			
Run No.	Bit	From	To	Size	Wgt.	From	To
One	12.25	00	1744	8.625	23#	00	1744
Two	7.875	1744	TD				

<<< Fold Here >>>

All interpretations are opinions based on inferences from electrical or other measurements and we cannot and do not guarantee the accuracy or correctness of any interpretation, and we shall not, except in the case of gross or willful negligence on our part, be liable or responsible for any loss, costs, damages, or expenses incurred or sustained by anyone resulting from any interpretation made by any of our officers, agents or employees. These interpretations are also subject to our general terms and conditions set out in our current Price Schedule.

Comments

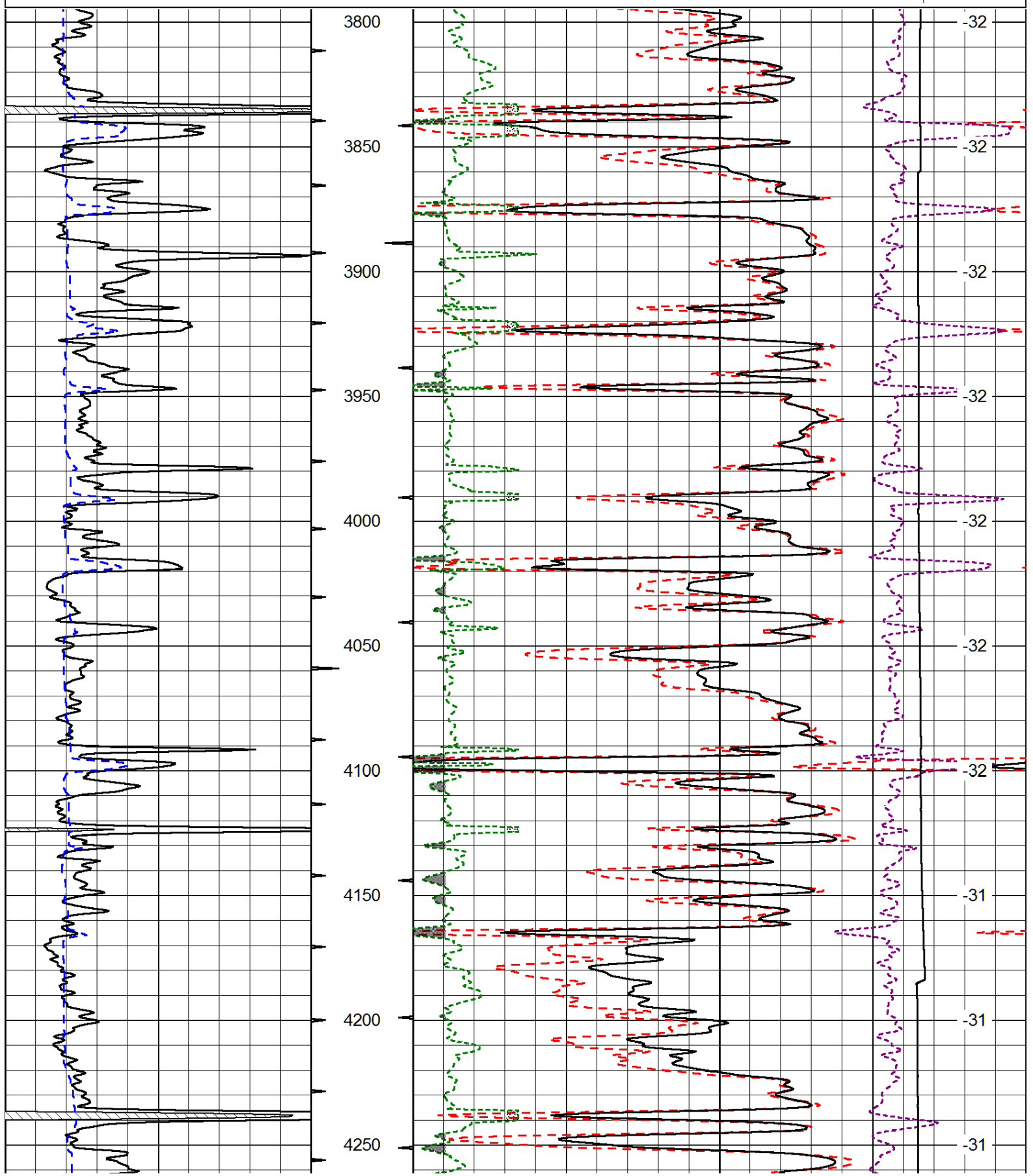
Thank you for using Log-Tech, Inc.
 (785) 625-3858

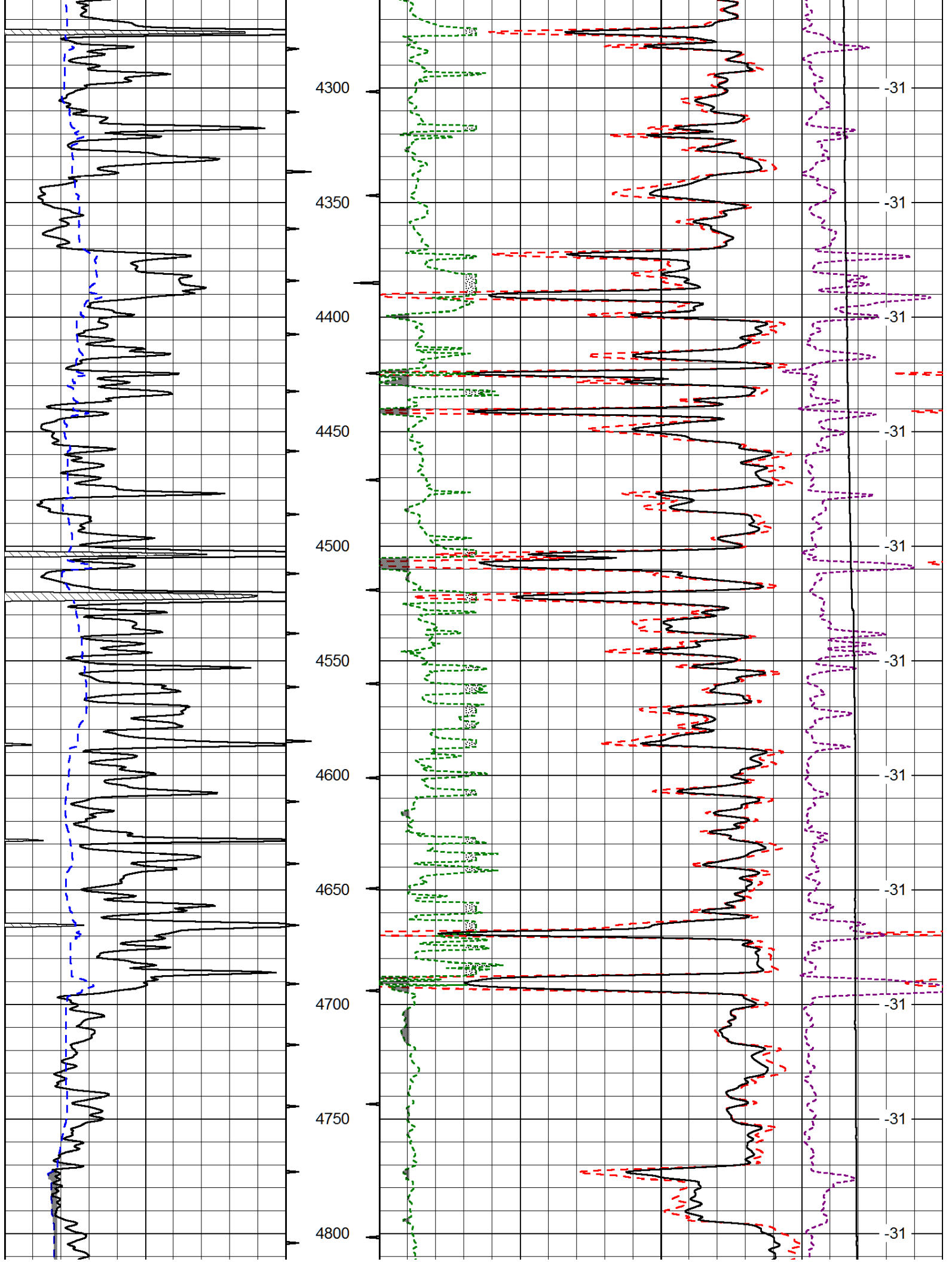
 Garden City KS, HWY 156 and Mary AVE.
 North to Jenni Barker RD, 1 1/2 North, 1/2 West, North Into

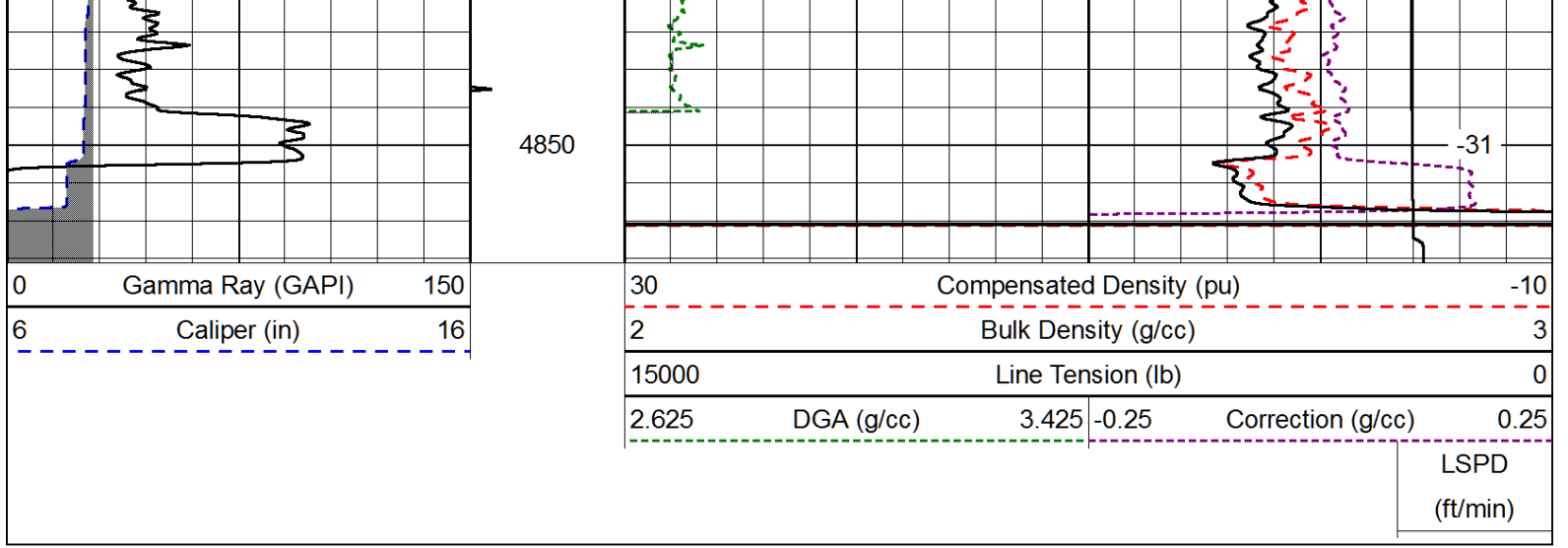
Database File: americanwarrior_congdon_7_28hd.db
 Dataset Pathname: DIL/awstk
 Presentation Format: cdl
 Dataset Creation: Mon Mar 10 14:42:03 2014
 Charted by: Depth in Feet scaled 1:600

0	Gamma Ray (GAPI)	150
6	Caliper (in)	16

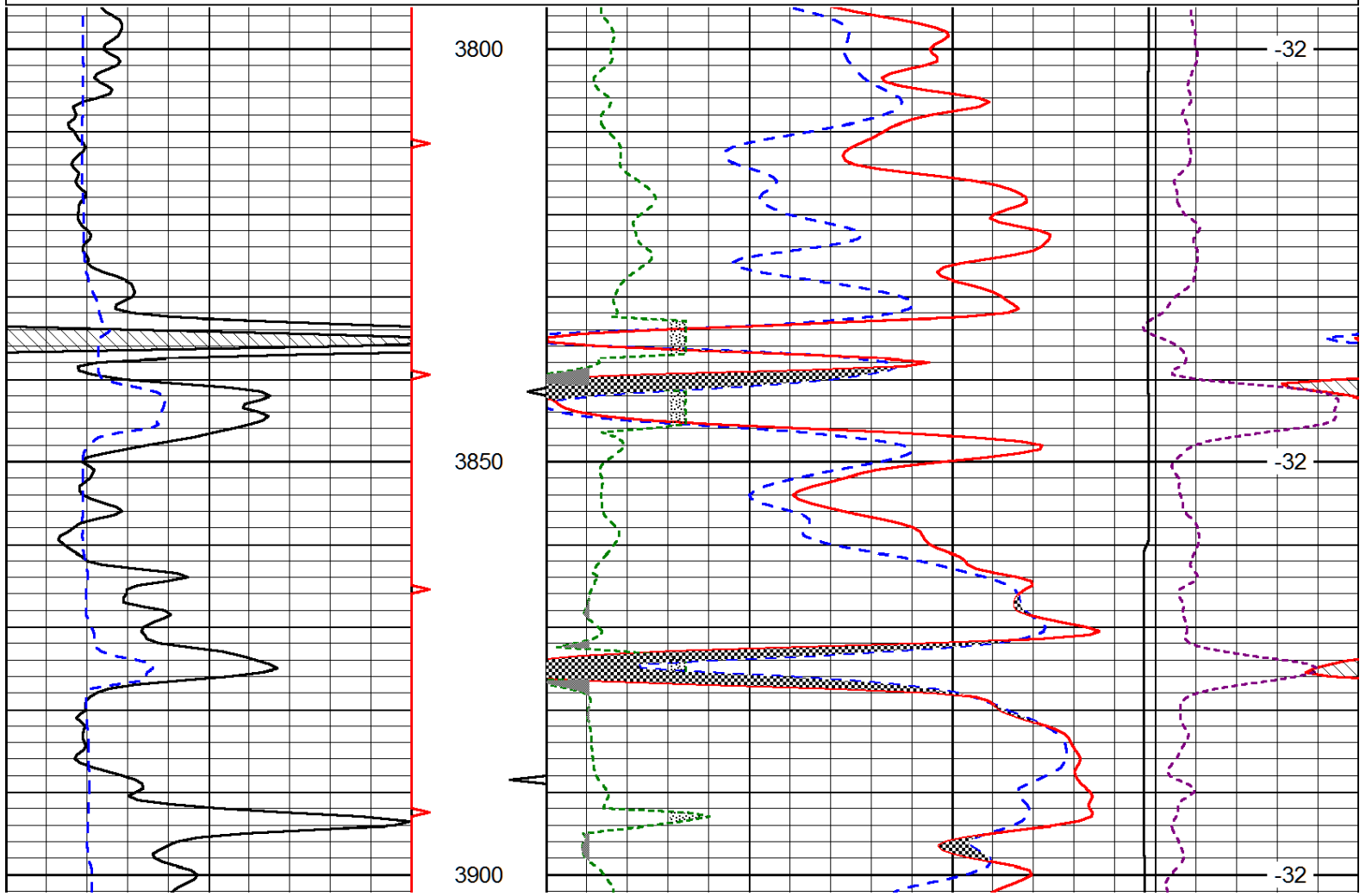
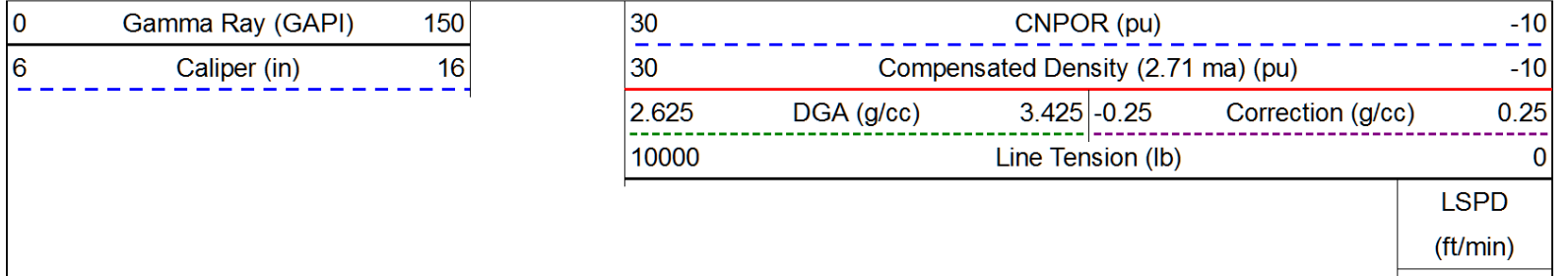
30	Compensated Density (pu)		-10
2	Bulk Density (g/cc)		3
15000	Line Tension (lb)		0
2.625	DGA (g/cc)	3.425	-0.25
	Correction (g/cc)		0.25
	LSPD (ft/min)		

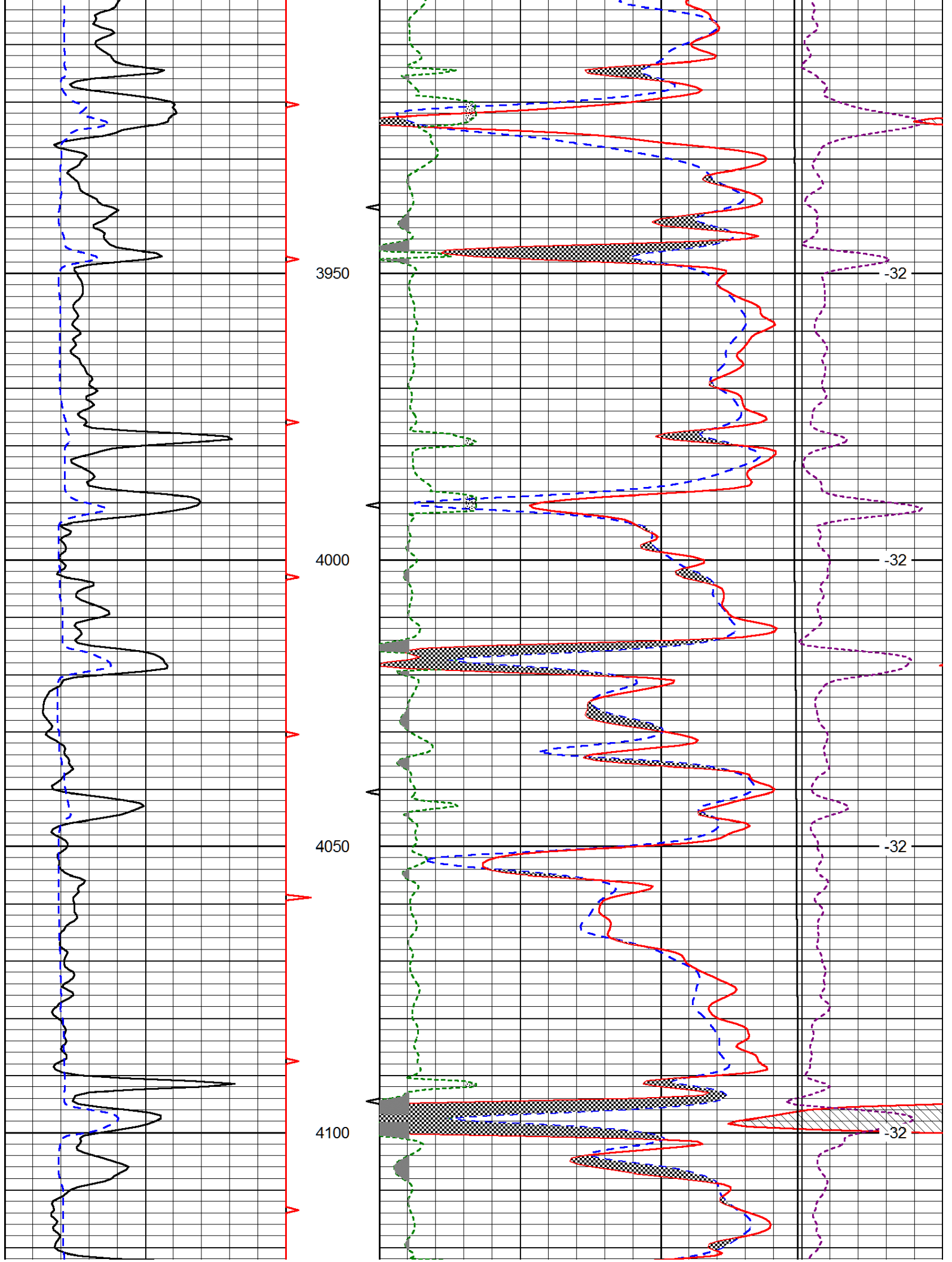


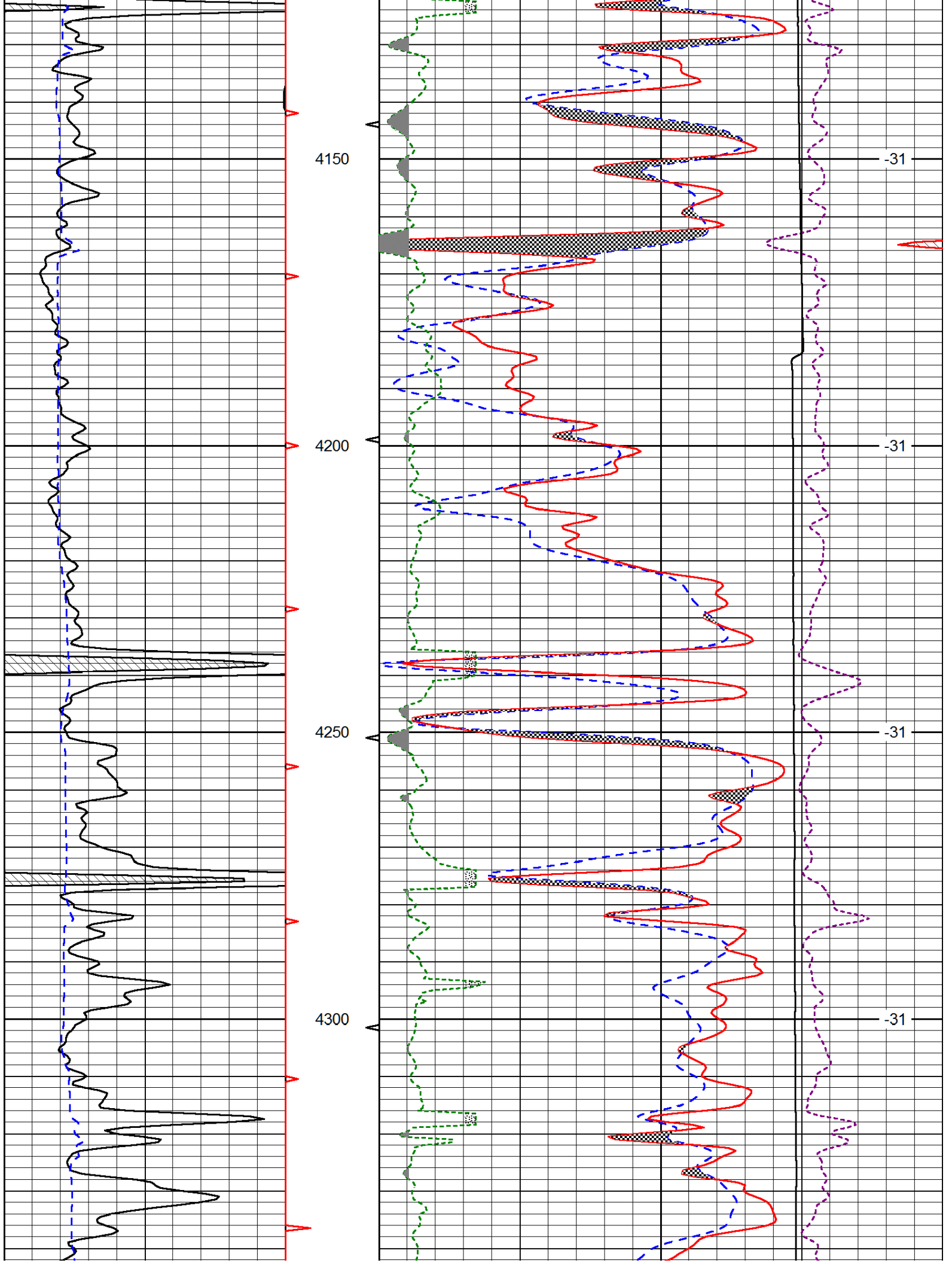


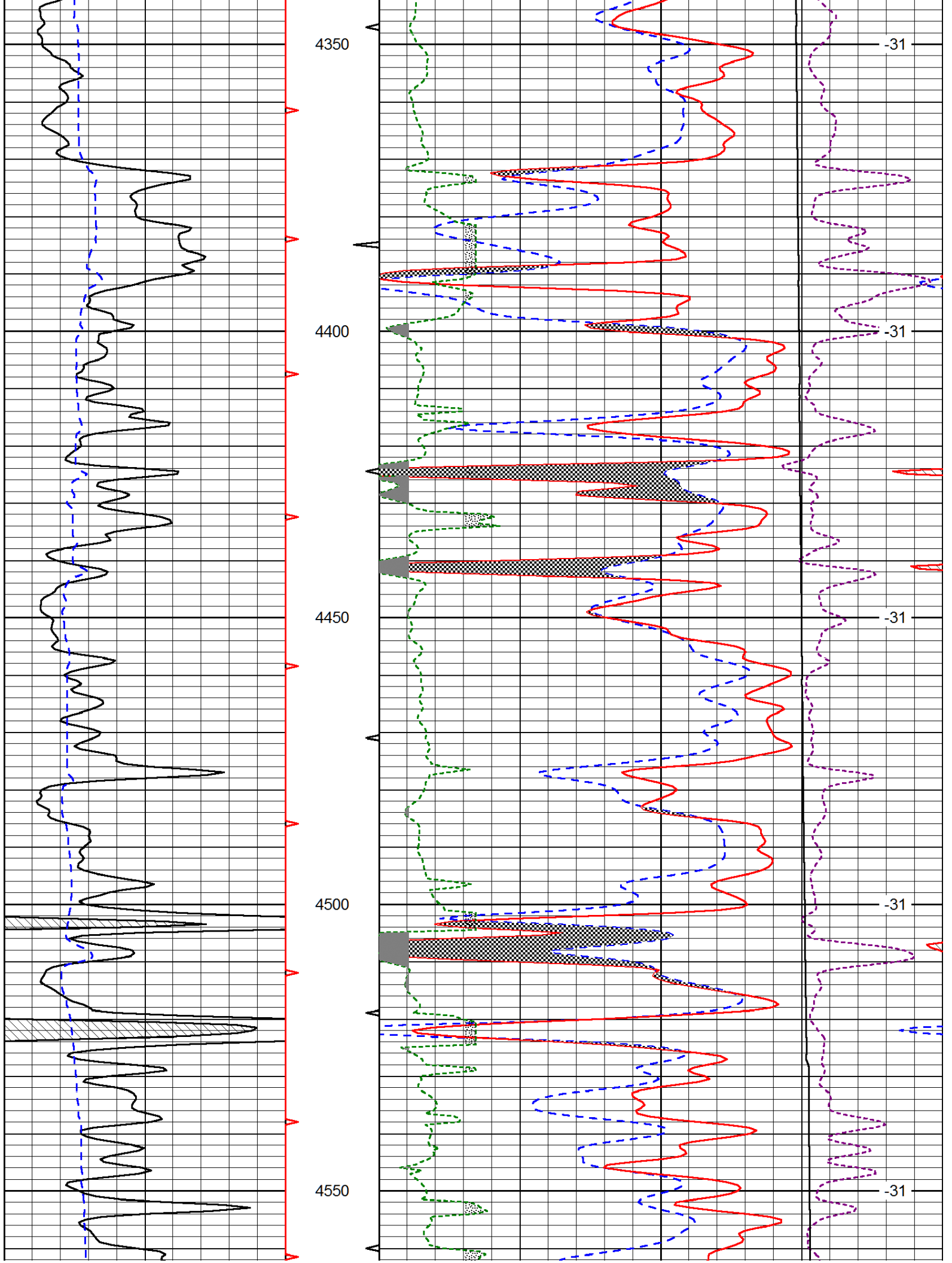


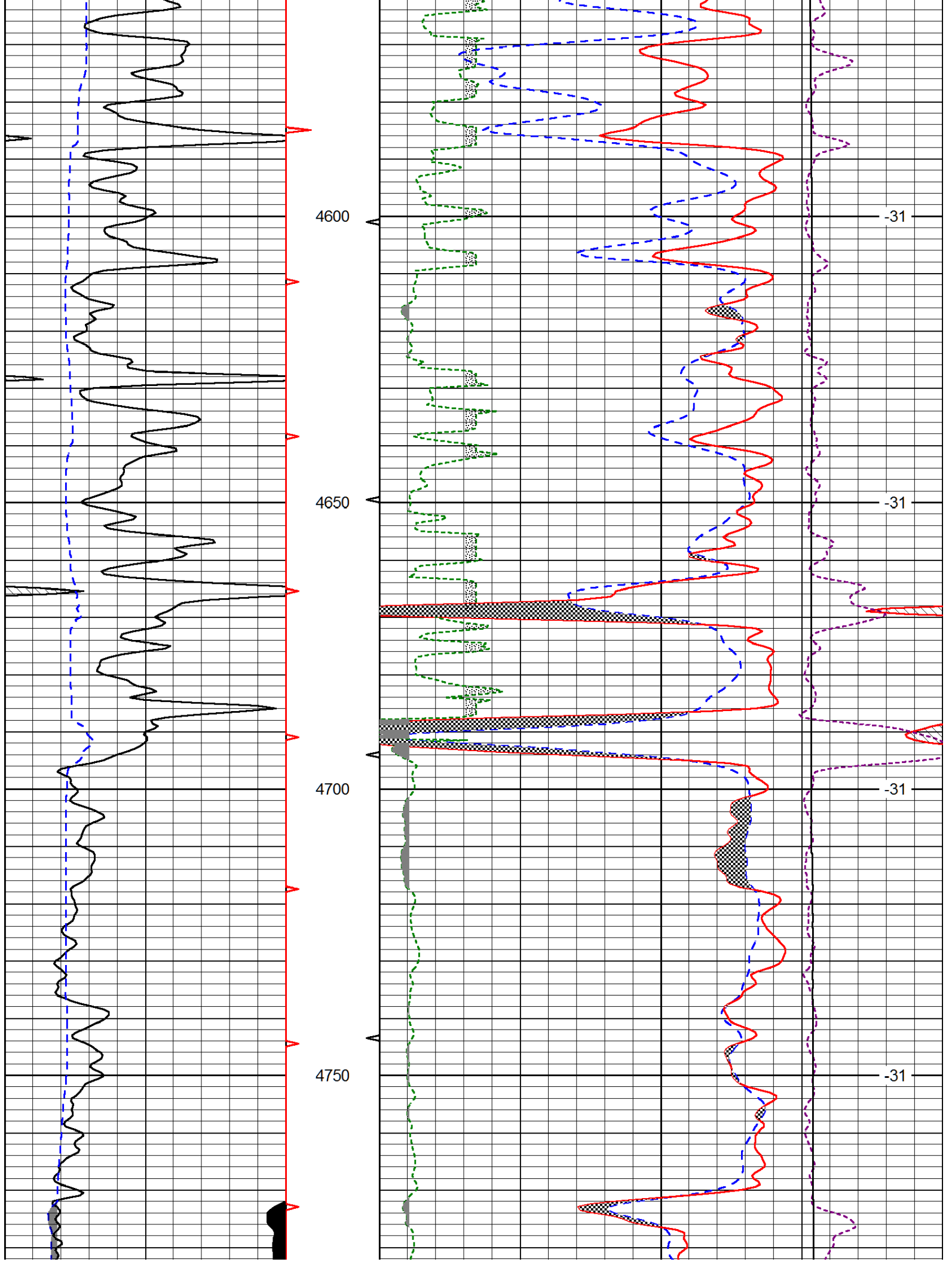
Database File: americanwarrior_congdon_7_28hd.db
 Dataset Pathname: DIL/awstk
 Presentation Format: cndlspec
 Dataset Creation: Mon Mar 10 14:42:03 2014
 Charted by: Depth in Feet scaled 1:240

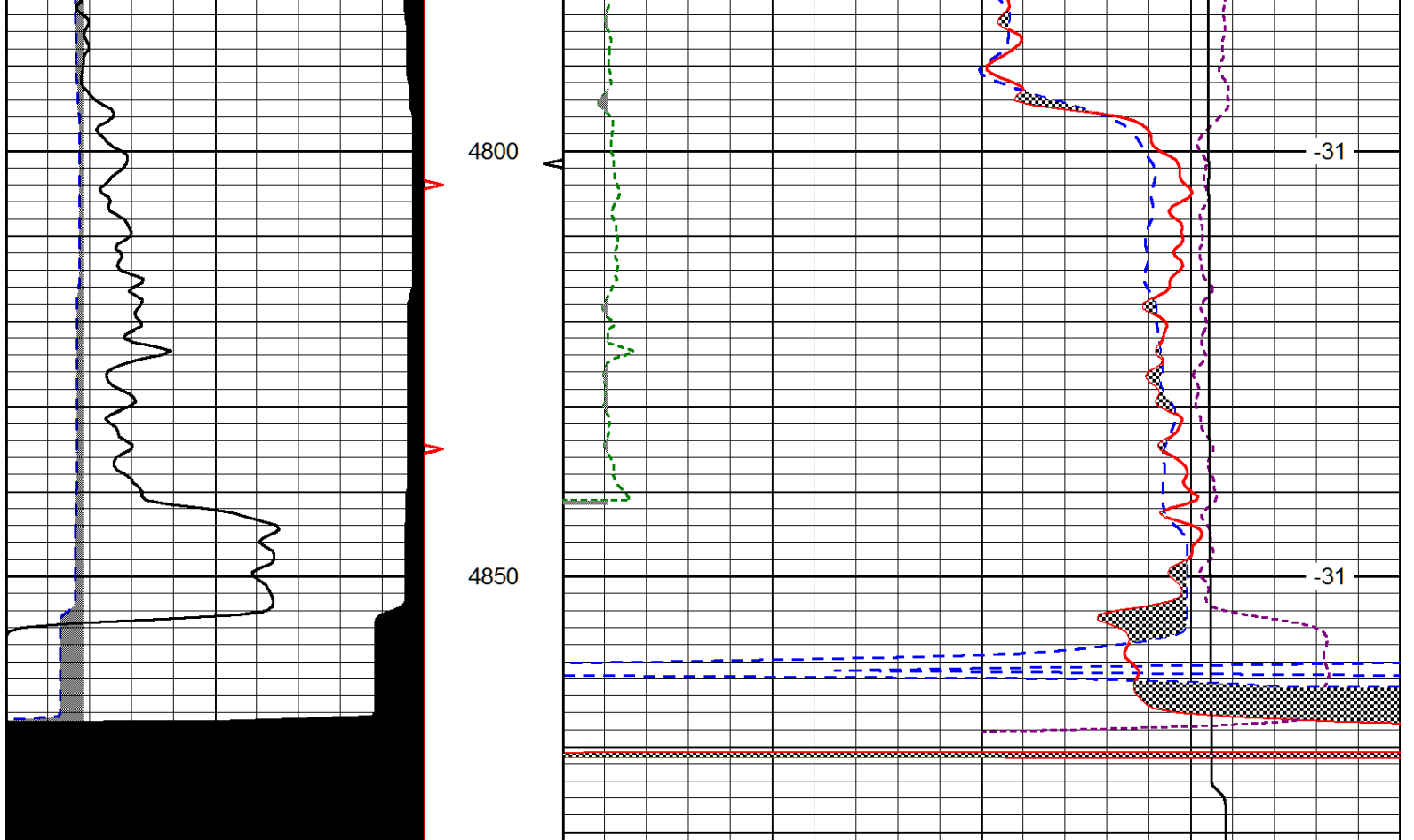












0	Gamma Ray (GAPI)	150
6	Caliper (in)	16

30	CNPOR (pu)			-10	
30	Compensated Density (2.71 ma) (pu)			-10	
2.625	DGA (g/cc)	3.425	-0.25	Correction (g/cc)	0.25
10000	Line Tension (lb)			0	

LSPD
(ft/min)