



Pioneer Energy Services

Microresistivity Log

API No.	15-055-22,258-00-00		
Company	American Warrior, Inc.		
Well	Congdon #7-28		
Field	Congdon		
County	Finney	State	Kansas
Location	SE NW SE SW 694' FSL & 1683' FWL		
Sec: 28	Twp: 23S	Rge: 32W	Other Services CNL/CDL DIL/BHCS
Permanent Datum	Ground Level	Elevation 2841	Elevation
Log Measured From	Kelly Bushing	11 Ft. Above Perm. Datum	K.B. 2852
Drilling Measured From	Kelly Bushing		D.F. 2841
			G.L. 2841

Date	3/10/2014
Run Number	Two
Depth Driller	4875
Depth Logger	4875
Bottom Logged Interval	4874
Top Log Interval	3800
Casing Driller	8.625 @ 1744
Casing Logger	1745
Bit Size	7.875
Type Fluid in Hole	Chemical
Salinity, ppm CL	2400
Density / Viscosity	9.5 57
pH / Fluid Loss	10.0 6.4
Source of Sample	Flowline
Rm @ Meas. Temp	1.10 @ 74
Rmf @ Meas. Temp	0.83 @ 74
Rmc @ Meas. Temp	1.49 @ 74
Source of Rmf / Rmc	Charts
Rm @ BHT	0.65 @ 125
Operating Rig Time	5 Hours
Max Rec. Temp. F	125
Equipment Number	15
Location	Hays
Recorded By	D. Kerr
Witnessed By	Kevin Timson

<<< Fold Here >>>

All interpretations are opinions based on inferences from electrical or other measurements and we cannot and do not guarantee the accuracy or correctness of any interpretation, and we shall not, except in the case of gross or willful negligence on our part, be liable or responsible for any loss, costs, damages, or expenses incurred or sustained by anyone resulting from any interpretation made by any of our officers, agents or employees. These interpretations are also subject to our general terms and conditions set out in our current Price Schedule.

Comments

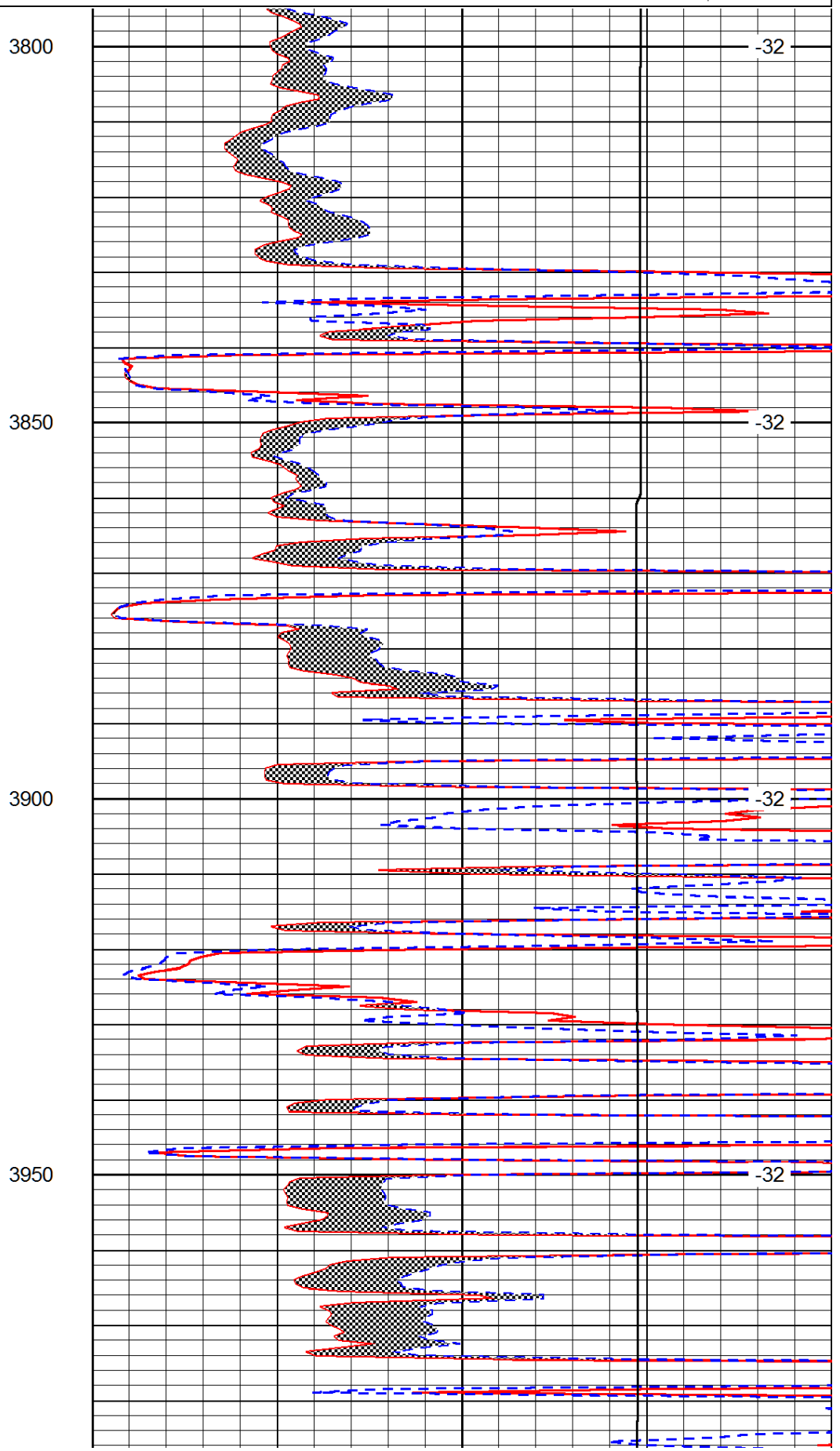
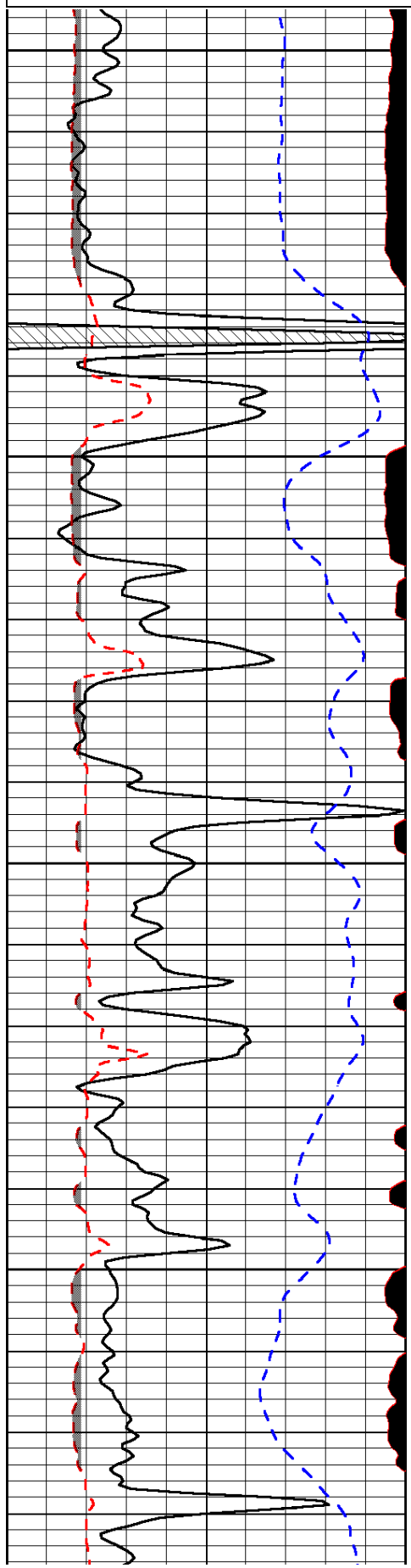
Thank you for using Log-Tech, Inc.
 (785) 625-3858

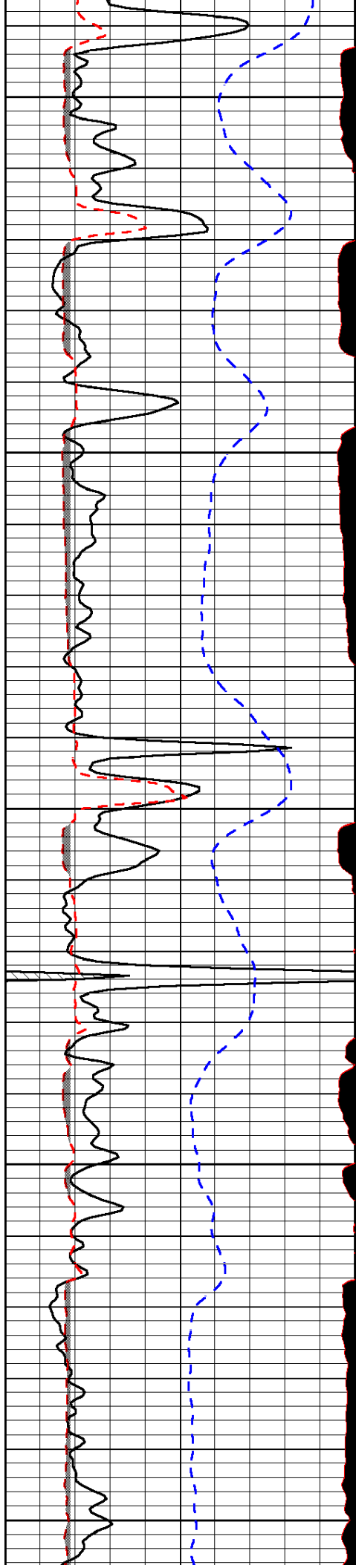
 Garden City KS, HWY 156 and Mary AVE.
 North to Jenni Barker RD, 1 1/2 North, 1/2 West, North Into

Database File: americanwarrior_congdon_7_28hd.db
 Dataset Pathname: DIL/awstk
 Presentation Format: micro
 Dataset Creation: Mon Mar 10 14:42:03 2014
 Charted by: Depth in Feet scaled 1:240

0	Gamma Ray (GAPI)	150
6	MCAL (in)	16
2.875	Mud Cake (in)	7.875
-200	SP (mV)	0

0	Micro Inverse 1 X 1 (Ohm-m)	40
0	Micro Normal 2" (Ohm-m)	40
10000	Line Weight (lb)	0
		LSPD (ft/min)





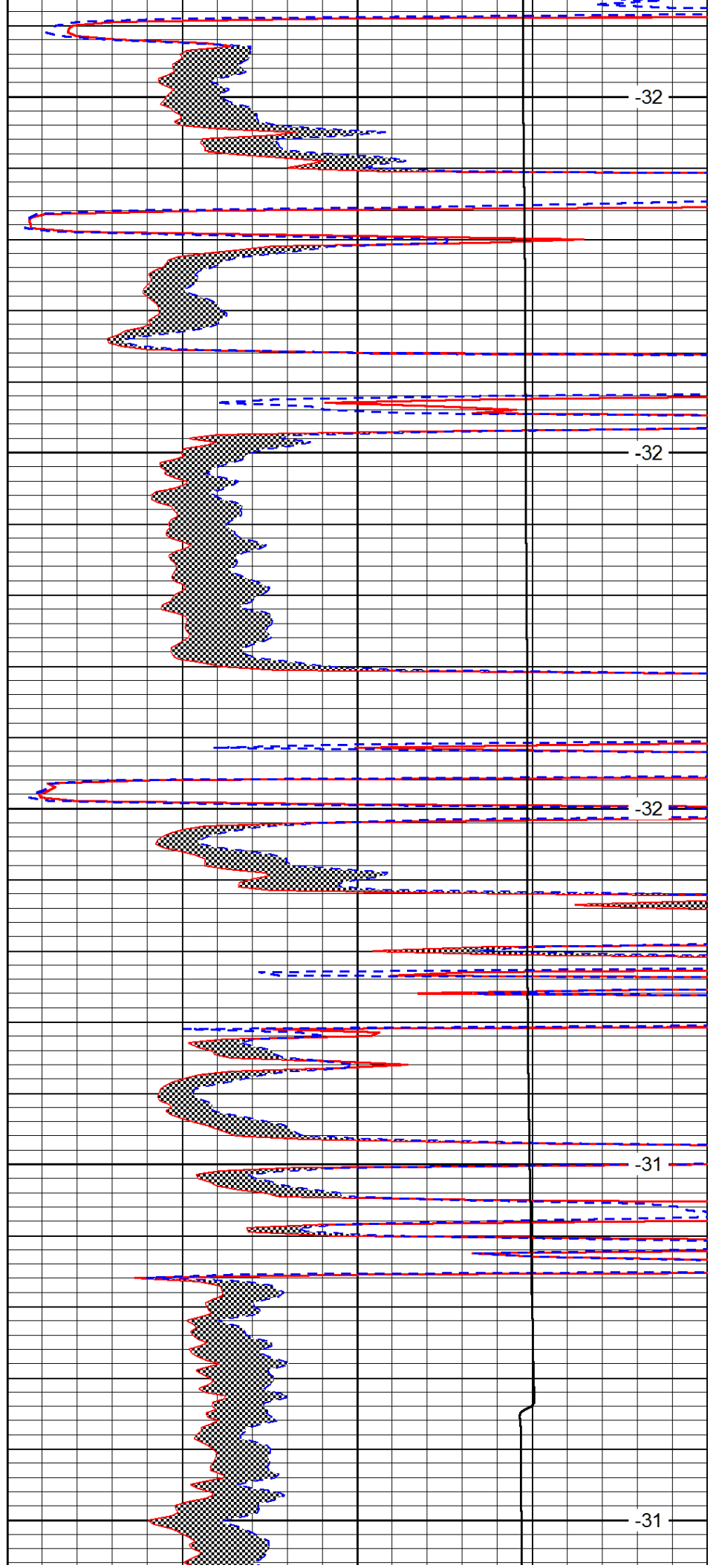
4000

4050

4100

4150

4200



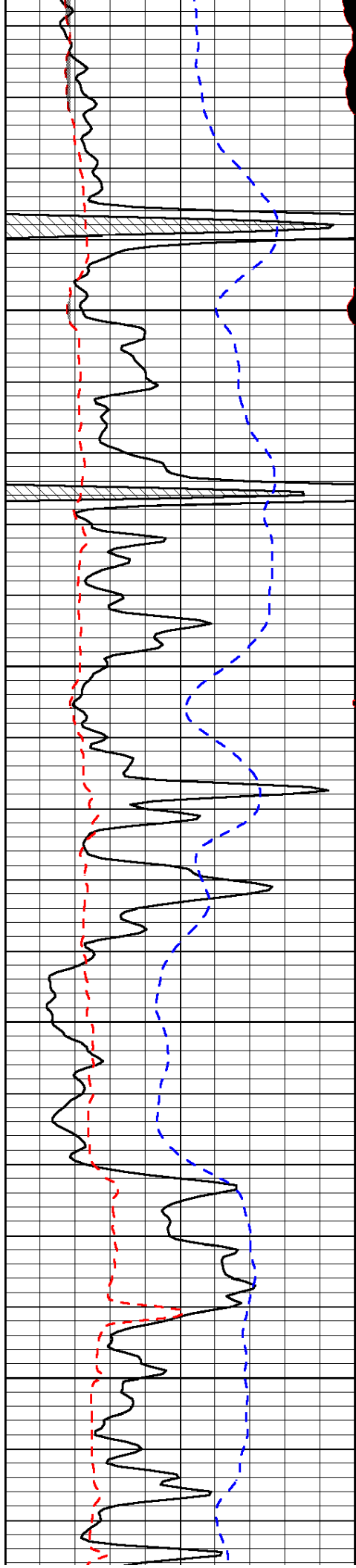
-32

-32

-32

-31

-31

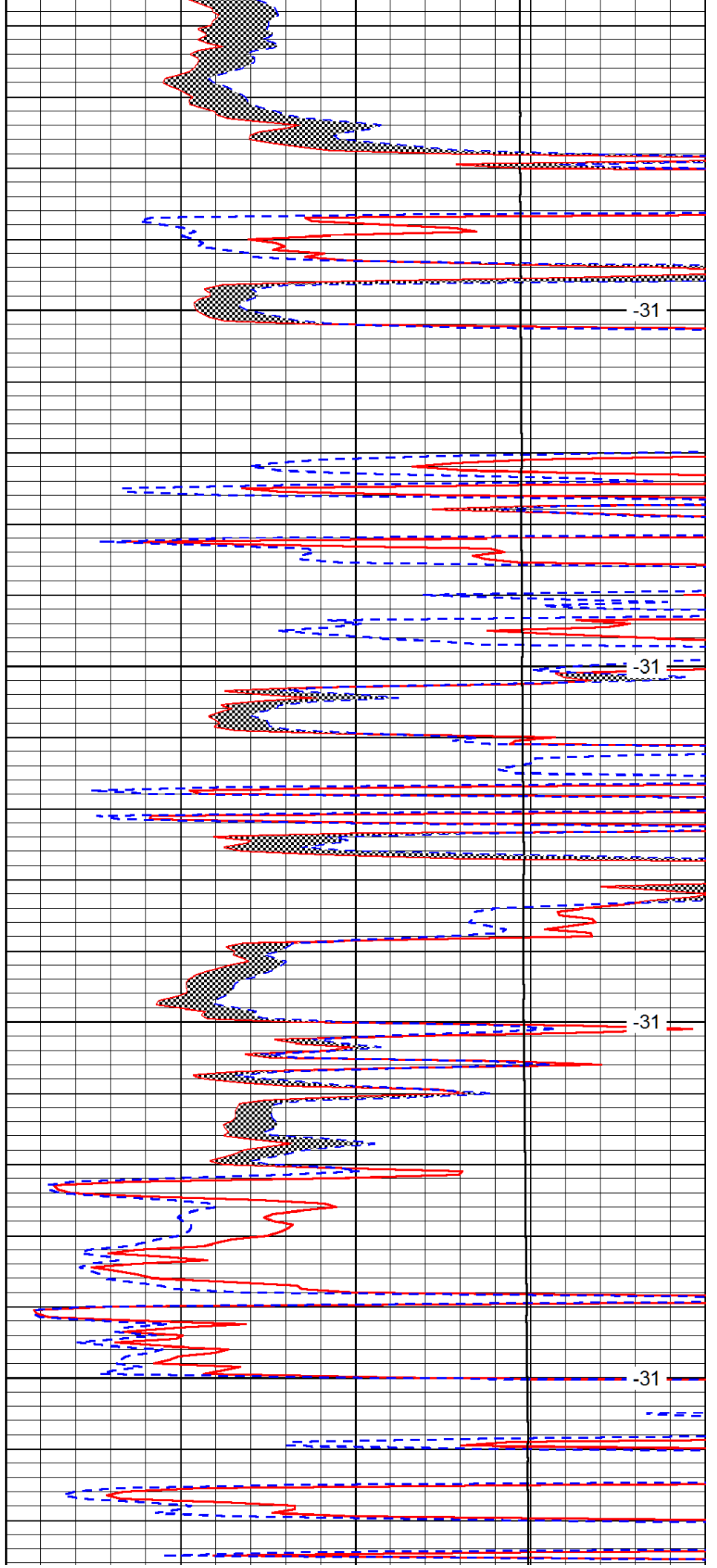


4250

4300

4350

4400

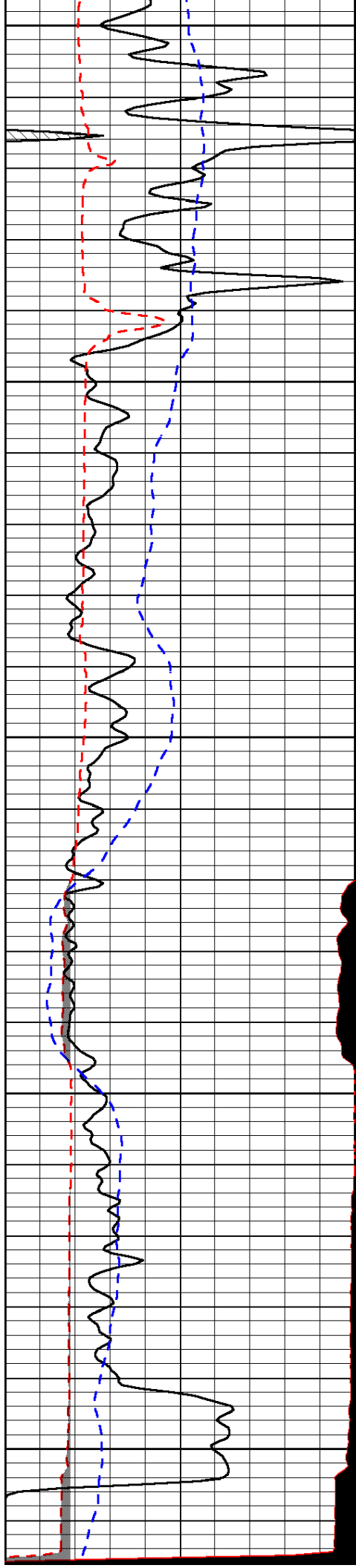


-31

-31

-31

-31



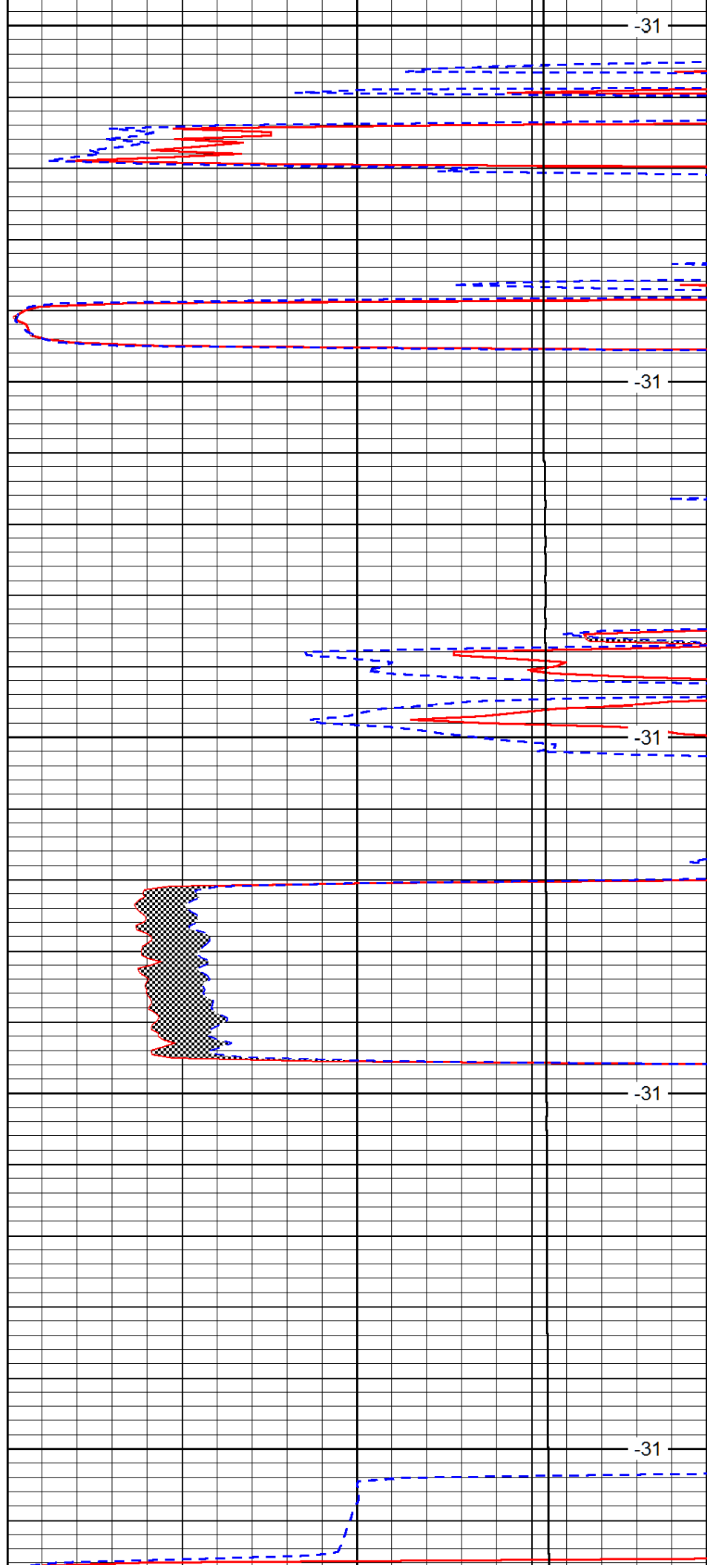
4650

4700

4750

4800

4850



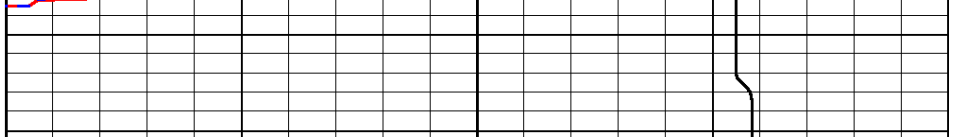
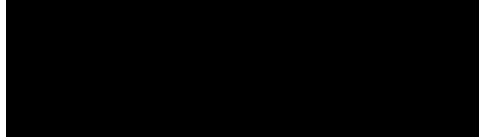
-31

-31

-31

-31

-31



0	Gamma Ray (GAPI)	150
6	MCAL (in)	16
2.875	Mud Cake (in)	7.875
-200	SP (mV)	0

0	Micro Inverse 1 X 1 (Ohm-m)	40
0	Micro Normal 2" (Ohm-m)	40
10000	Line Weight (lb)	0

LSPD
(ft/min)