



MID CONTINENT WELL LOGGING SERVICE, INC.

CONTINUOUS WELL LOGGING / COMPLETE HYDROCARBON ANALYSIS

2222 WESTPARK DR. STE. A
NORMAN, OK 73069
OFFICE (405) 360-7333
OPERATIONS (405) 590-3655
SALES (405) 203-9989

Scale 1:240 (5"=100') Imperial
Measured Depth Log

Well Name: Mazanec 1735 1-19
Location: Section 19, T17S, R35W Wichita County, Ks
License Number: API #15-203-20245
Spud Date: 12/12/2013
Surface Coordinates: SHL: 400' FNL & 400' FEL of SW, NE, NE, NE OF Section 19, T17S, R35W
Region: Wichita
Drilling Completed: 12/17/2013
Bottom Hole Coordinates: SHL: 400' FNL & 400' FEL of SW, NE, NE, NE OF Section 19, T17S, R35W
Ground Elevation (ft): 3,220' K.B. Elevation (ft): 3,229'
Logged Interval (ft): 2,000' To: 5,100' Total Depth (ft): 3,100'
Formation: MISSISSIPPIAN
Type of Drilling Fluid: WATER/ NATIVE GEL

Printed by MUD.LOG from WellSight Systems 1-800-447-1534 www.WellSight.com

OPERATOR

Company: Sandridge Energy, INC.
Address: 123 Robert S. Kerr Avenue, Ste. 2430
Oklahoma City, Oklahoma 73102-6406

GEOLOGIST

Name: William Scott
Company: Sandridge Energy, Inc
Address: 123 Robert S. Kerr Avenue, Ste. 2430
Oklahoma City, Oklahoma 73102-6406

Cores

DSTs

Comments

CRESENT CONSOLTING, OKLAHOMA CITY, OK
WELLSITE MANAGER: MR. LARRY STRONG

TOMCAT DRILLING CO.; RIG #4
RIG MANAGER: OSCAR MARTINEZ

AES DRILLING FLUIDS; EDMOND, OK
ENGINEER: BRIAN MOUTON

MID CONTENENT WELL LOGGING SERVICE, INC.; NORMAN, OK. LOGGING UNIT: MC-18
LOGGERS: BLAKE JOHNSON
BEGIN LOGGING: 12/15/2013

ROCK TYPES

	Sndylm
	Anhy
	Bent
	Brec
	Cht
	Clyst

	Coal
	Leach
	Congl
	Dol
	Gyp
	Igne

	Lmst
	Meta
	Mrlst
	Salt
	Shale
	Shcol

	Shgy
	Ss
	Till
	Hotsh
	Sltst

ACCESSORIES

MINERAL	
	Anhy
	Arggrn
	Arg
	Bent
	Bit
	Brecfrag
	Calc
	Carb
	Chtdk
	Chtlt
	Dol
	Feldspar
	Ferrpel
	Ferr
	Glau
	Gyp
	Hvymin
	Kaol
	Marl

	Minxl
	Nodule
	Phos
	Pyr
	Salt
	Sandy
	Silt
	Sil
	Sulphur
	Tuff

FOSSIL	
	Algae
	Amph
	Belm
	Bioclst
	Brach
	Bryozoa
	Cephal
	Coral

	Crin
	Echin
	Fish
	Foram
	Fossil
	Gastro
	Oolite
	Ostra
	Pelec
	Pellet
	Pisolite
	Plant
	Strom

STRINGER

	Anhy
	Arg
	Bent
	Coal
	Dol

	Gyp
	Ls
	Mrst
	Ssstrg
	Sltstrg

TEXTURE

	Boundst
	Chalky
	Cryxln
	Earthy
	Finexln
	Grainst
	Lithogr
	Microxln
	Mudst
	Packst
	Wackst

WOB: 10-11 K
RPM: 98
SPM: 65
GPM: 800

ROP (min/ft) 10
G/R (API) 150

2100
2150
2200
2250
2300

SH: MSTLY RED/ BRN, SME LT GY,
PRED BLKY, MSTLY SFT- V SFT,
OCC MOD SFT, MOD SMTH- MOD
RGH SLTY TXT, SS: OFF WHT-
OPQ, CONS, FR SRT, NO VIS
FLOR, N/S

**CEDAR HILL BASE @
2,132' MD (1,097')**

SH: PRED RED/ BRN, OCC LT GY,
BLKY, SFT- MOD SFT, SME MOD
FRM, ABUND MOD SMTH TXT, OCC
FN SLTY TXT, LS: LT GY- OFF WHT,
PLTY- BLKY, MSTLY FRM, MOD FN-
FN XLN, N/S

SH: MSTLY RED/BRN, SCAT LT GY
THRU OUT, BLKY- PLTY, PRED
MOD SFT- SFT, SCAT MOD FRM
THRU OUT, MOD SMTH- MOD RGH
SLTY TXT, SS: WHT- OFF WHT,
OCC OPQ, FN- V FN GRNS, FR SRT,
FRM- MOD FRM, SME SLI FRI, TR
DULL YEL MIN FLOR, NO VIS CUT,
NO RESD RING, NO ODOR

SH: RED/BRN, MSTLY BLKY, DCRG
PLTY, MOD SFT- MOD FRM, SCAT
SFT THRU OUT, PRED MOD SMTH
TXT TXT, SCAT MOD RGH SLTY
TXT THRU OUT, DCRG SS
STRNGRS THRU OUT, OC LS
STRNGR, N/S

KD

KD

KD

KD

KD

KD

KD

SandRidge Energy MAZANEC 1-19 50

WT: 9.7
VIS: 33

WOB: 12-13 K
RPM: 100
SPM: 70
GPM: 800

ROP (min/ft) 10
G/R (API) 150

2350

2400

2450

2500

SH: PRED RED/BRN, BLKY, TR
PLTY, MOD SFT- SFT, INCRG TR
MOD FRM, ERTHY, SUB WXY TXT,
SCAT SLTY,LS STRNGRS THRU
OUT, N/S

SH: MSTLY RED- BRN, OCC LT GY,
BLKY- PLTY, SFT- MOD SFT, SME
MOD FRM, MOD SMTH- V FN SLTY
TXT, LS: OFF WHT- WHT, SME LT
GY, MSTLY FRM, MOD FN- FN XLN,
N/S

SH: PRED RED- BRN, SME LT GY,
MSTLY BLKY- PLTY, PRED SFT-
MOD SFT, OCC MOD FRM, MSTLY
MOD SMTH TXT, SCAT V FN SLTY
TXT, LS: OFF WHT- WHT, SME LT
GY, MSTLY FRM, MOD FN- FN XLN,
N/S

SH: MSTLY RED- BRN,TR LT GY,
PRED BLKY, SFT- MOD SFT, OCC
MOD FRM, MOD SMTH- MOD RGH
SLTY TXT, SS: OFF WHT- WHT,
SCAT RED BRN, PRED CONS, OCC
OPQ, FN- V FN GRNS, FR SRT,
MOD FRM- FRM, TR SLI FRI, TR
FREE QTZ, TR DULL YEL MIN
FLOR, N/S

KD

KD

KD

KD

KD

KD

KD

SandRidge Energy MAZANEC 1-19 50

MUD @: 2,523'
MW: 9.8
FV: 35
PV: 10

JET PIT #1 @
2,600' MD
WOB: 13 K
RPM: 100
SPM: 70
GPM: 800

ROP (min/ft) 10
G/R (API) 150

2550

2600

2650

2700

2750

SH: PRED RED- BRN, DCRG TR LT
GY, BLKY- PLTY, SFT- MOD SFT, TR
MOD FRM, MOS SMTH- MOD RGH
TXT, SLTY, LS: CRM- WHT, TR LT
GY, PLTY- BLKY, FRM- MOD FRM,
TR MOD HD, MSTLY FN XLN, N/S

SH: MSTLY RED- BRN, PRED BLKY-
PLTY, SFT- MOD SFT, TR MOD FRM,
MOD SMTH- MOD RGH TXT, SME
SLTY, LS: PRED CRM- WHT, TR LT
GY, MSTLY PLTY- BLKY, FRM- MOD
FRM, TR MOD HD, MSTLY FN- MOD
FN XLN, N/S

SH: MSTLY RED- BRN, SME LT GY,
PRED BLKY- PLTY, SFT- MOD SFT,
TR MOD FRM, MOD SMTH- MOD
RGH TXT, SME SLTY, LS: PRED
CRM- WHT, TR LT GY, MSTLY PLTY-
BLKY, FRM- MOD FRM, TR MOD HD,
MSTLY FN- MOD FN XLN, N/S

SH: RED/BRN- LT GY, SCAT MED
GY THRU OUT, BLKY, SME PLTY,
MSTLY SFT- MOD SFT, OCC MOD
FRM, MOD SMTH- MOD RGH TXT,
OCC SLTY, LS: OFF WHT- WHT,
SCAT LT GY, PLTY- BLKY, FRM-
MOD FRM, FN XLN, TR CRSE XLN,
TR DULL YEL- YEL MIN FLOR, N/S

YP: 5
GEL: 8/16
SOL: 10.0%
H2O: 90.0%
PH: 10.2
CHL: 64,000
CALC: 1880

KD

KD

KD

KD

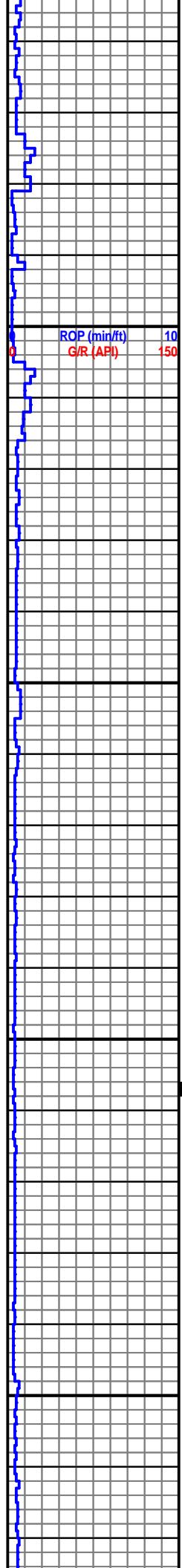
KD

KD

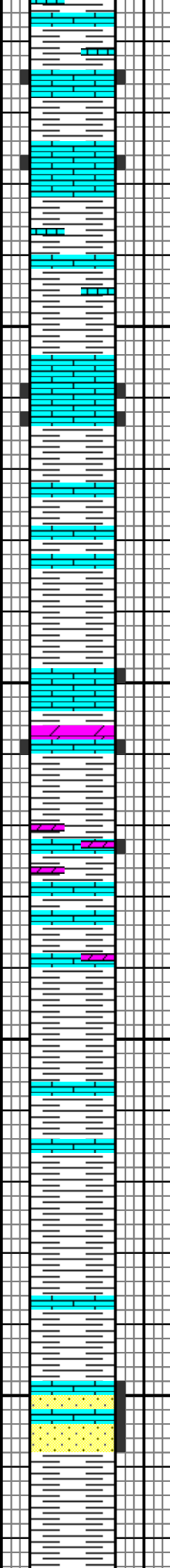
KD

SandRidge Energy MAZANEC 1-19 50

WOB: 12 K
RPM: 90
SPM: 69
GPM: 800



2800
2850
2900
2950



SH: MSTLY LT GY- MED GY, INCRG MED GY, SCAT RED/ BRN THRU OUT, OCC DRK GY, MOD SMTH TXT, OCC MOD RGH SLTY TXT, LS: OFF WHT- WHT, SCAT LT GY THRU OUT, PLY- BLKY, FRM- MOD FRM, TR MOD HD, FN- V FN XLN, OCC DULL YEL- YEL MIN FLOR, NO VIS CUT, NO RESD RING, NO ODOR

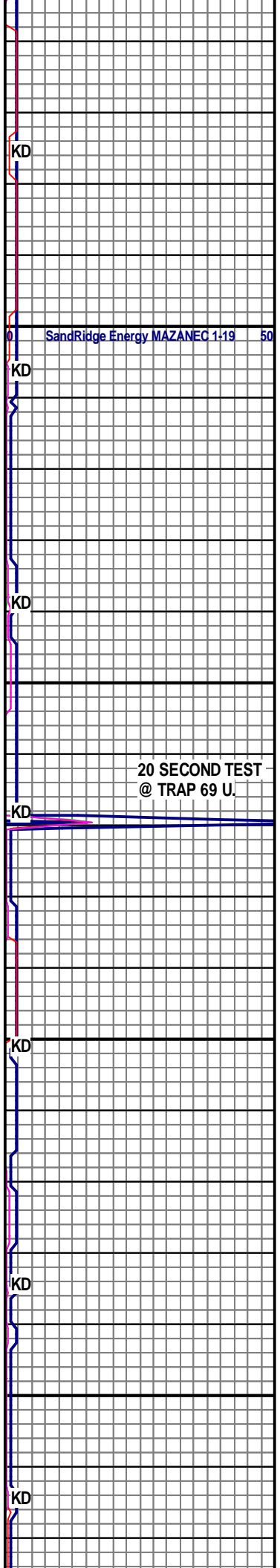
SH: PRED MED GY- LT GY, INCRG SCAT RED/ BRN THRU OUT, BLKY, OCC PLY, MOD SFT- SFT, TR V SFT, MOD SMTH TXT, OCC MOD RGH SLTY TXT, LS: WHT- OFF WHT, OCC MTTLD W/ LT GY, PLY- BLKY, FRM- MOD FRM, FN- V FN XLN, TR DULL YEL MIN FLOR, N/S

CHASE @ 2,848' MD (-381')

20 SECOND TEST @ TRAP 69 U.

SH: MSTLY MED GY- RED/ BRN, SCAT LT GY, PRED BLKY, SFT- MOD SFT, OCC V SFT, MOD SMTH- MOD RGH SLTY TXT, LS: OFF WHT- WHT, TR LT GY, PLY- BLKY, FRM- MOD FRM, FN- V FN XLN, DOL: OFF WHT- LT BRN, BLKY- MOD HD- FRM, V FN- FN XLN, SME DULL YEL- YEL MIN FLOR, NO VIS CUT, NO RESD RING

SH: PRED MED GY- RED/ BRN, SCAT LT GY THRU OUT, BLKY, OCC PLY, SFT- MOD SFT, MOD RGH- MOD SMTH SLTY TXT, LS: OFF WHT- WHT, PLY- BLKY, INCRG BLKY, FRM- MOD FRM, V FN- FN XLN, NO VIS FLOR, N/S



SandRidge Energy MAZANEC 1-19 50

WOB: 11-12 K
RPM: 95
SPM: 70
GPM: 800

ROP (min/ft) 10
G/R (API) 150

3000

SH: RED/BRN, BLKY, MSTLY SFT-
MOD SFT, RGH TXT, SLTY, LS: OFF
WHT- WHT, SCAT LT GY, PLTY-
BLKY, MOD SFT- MOD FRM, MED-
CRSE XLN, DOL: OFF WHT, BLKY,
FRM- HRD, V FN- FN XLN, SME
DULL YEL- YEL MIN FLOR, NO CUT,
NO RES RING

KD

SandRidge Energy MAZANEC 1-19 50

3050

SH: RED/BRN, BLKY SME PLTY,
MSTLY SFT- MOD SFT, MED- RGH
TXT, PRED SLTY, OCC SND LS:
OFF WHT- WHT, SCAT LT GY, PLTY-
BLKY, MOD SFT- MOD FRM, MED-
CRSE XLN, DOL: OFF WHT, BLKY,
FRM- HRD, V FN- FN XLN, SME
DULL YEL- YEL MIN FLOR, NO CUT,
NO RES RING

KD

KD

3100

SH: RED/BRN, BLKY, MSTLY SFT-
MOD SFT, MED- RGH TXT, SLTY,
LS: OFF WHT- WHT, SCAT LT GY,
PLTY- BLKY, MOD SFT- MOD FRM,
FN- CRSE XLN, OCC FN XLN DOL:
OFF WHT- GRY, BLKY, FRM- HRD, V
FN- FN XLN, YEL MIN FLOR, NO
CUT, NO RES RING

KD

KD

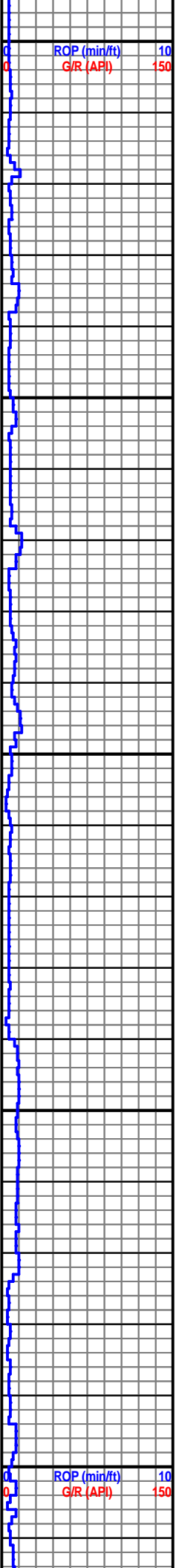
3150

SH: RED/BRN, BLKY, MSTLY SFT-
MOD SFT, MED- RGH TXT, SLTY LS:
OFF WHT- WHT, SCAT LT GY, PLTY-
BLKY, MOD SFT- MOD FRM, MED-
CRSE XLN, OCC FN XLN, DOL: OFF
WHT-GRY, BLKY, FRM- HRD, V FN-
FN XLN, SME DULL YEL- YEL MIN
FLOR, NO CUT, NO RES RING

KD

KD

WOB: 11-12 K
RPM: 90
SPM: 67
GPM: 750



3200
3250
3300
3350
3400

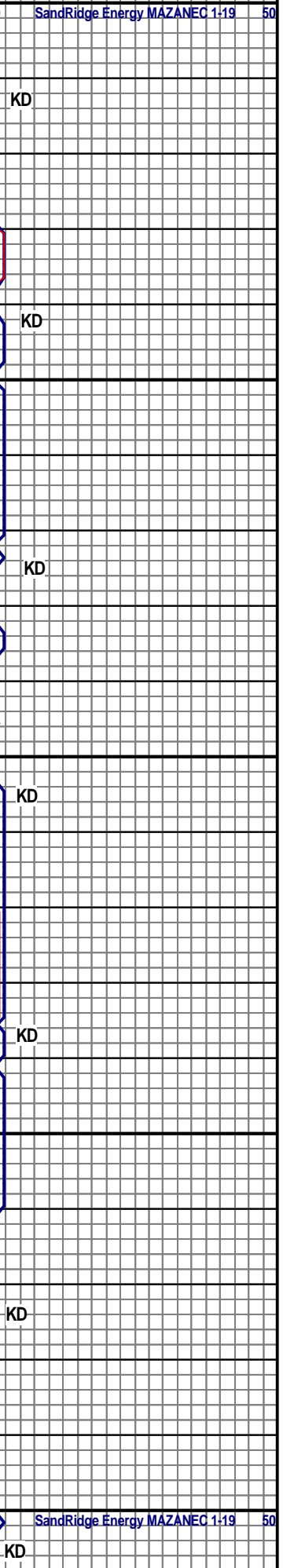
SH: RED/BRN, BLKY, MSTLY SFT-MOD SFT, MED- RGH TXT, SLTY LS: OFF WHT- WHT, SME GRY, PLTY-BLKY, MOD SFT- MOD FRM, MED- CRSE XLN, OCC FN XLN, DOL: OFF WHT-GRY, BLKY, FRM- HRD, V FN- FN XLN, YEL MIN FLOR, NO CUT, NO RES RING

SH: RED/BRN SME BRN, BLKY, MSTLY SFT- MOD SFT, MED- RGH TXT, SLTY, LS: OFF WHT- WHT, SME YELL, SCAT LT GY, BLKY, MOD SFT- MOD FRM, MED- CRSE XLN, OCC FN XLN , YEL MIN FLOR, NO CUT, NO RES RING

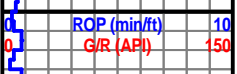
SH: RED/BRN OCC BRN, BLKY, MSTLY SFT- MOD SFT, MED- RGH TXT, SLTY LS: OFF WHT- WHT, SME YELL, SCAT LT GY, BLKY, MOD SFT- MOD FRM, MED- CRSE XLN, OCC FN XLN, DOL: OFF WHT-GRY, BLKY, FRM- HRD, V FN- FN XLN, YEL MIN FLOR, NO CUT, NO RES RING

LS: OFF WHT- WHT, OCC YEL, BLKY, MOD SFT- MOD FRM, SCAT CHLKY, MSTLY FN-MED XLN, OCC CRSE XLN W/ CHRT: BLK, HRD- V HRD SH: RED/BRN SME BRN, BLKY, MSTLY SFT- MOD SFT, MED- RGH TXT, YEL MIN FLOR, NO CUT, NO RES RING

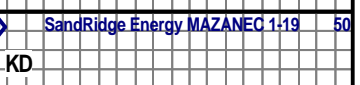
LS: PRED OFF WHT- WHT, SME YEL, MSTLY BLKY, MOD SFT- MOD FRM, OCC CHLKY, FN-MED XLN, TR CRSE XLN W/ CHRT: BLK, HRD- V HRD SH: RED/BRN, BLKY, MSTLY SFT- MOD SFT, MED- RGH TXT, YEL MIN FLOR, NO CUT, NO RES RING



WOB: 12 K
RPM: 90
SPM: 70
GPM: 750



3400



MIN FLOR, NO CUT, NO RES RING

KD

SH: RED/BRN SME BRN, BLKY, MSTLY SFT- MOD SFT, MED- RGH TXT, SLTY LS: OFF WHT- WHT, SME YEL, SCAT LT GY, BLKY, MOD SFT- MOD FRM, MED- CRSE XLN, SME FN XLN, YEL MIN FLOR, NO CUT, NO RES RING

KD

LS: OFF WHT- WHT, SME CHLKY OCC YELL, BLKY, MOD SFT- MOD FRM, FN-MED XLN, OCC CRSE XLN, SH: BLK, SME RD/BRN, BLKY- PLTY, MSTLY SFT- MOD SFT, MED TXT, SLI CALC, CHRT: BLK, HRD- V HRD, YEL MIN FLOR, NO CUT, NO RES

KD

LS: OFF WHT- WHT, SME CHLKY WHT, PLTY, OCC BLKY, MOD SFT- MOD FRM, FN-MED XLN, OCC CRSE XLN W/ TR CHRT: BLK, HRD- V HRD, SH: BLK, OCC RD/BRN, BLKY, MSTLY SFT- MOD SFT, MED TXT, DOL: WHT, BLKY, FRM- HRD, V FN- FN XLN, YEL MIN FLOR, NO CUT, NO RES

KD

LS: OFF WHT- WHT, SME CHLKY, BLKY, MOD SFT- MOD FRM, FN-MED XLN, OCC CRSE XLN W/ OCC CHRT: BLK, HRD- V HRD, SH: BLK, OCC PLTY, SOME BLKY, MOD FRM-MOD SFT, MED TXT, SLI CALC, DOL: WHT, BLKY, FRM- HRD, V FN- FN XLN, YEL MIN FLOR, NO CUT, NO RES

KD

KD

SH: BLK, OCC RD/BRN, PLTY SME, BLKY, MSTLY SFT- MOD SFT, MED TXT, LMY LS: OFF WHT- WHT, SME CHLKY, BLKY, MOD SFT- MOD FRM, FN-MED XLN, OCC CRSE XLN W/ CHRT: BLK, HRD- V HRD, YEL MIN

KD

3450

3500

3550

3600

12/16/2013

WOB: 12 K
RPM: 100
SPM: 75
GPM: 800

ROP (min/ft) 10
G/R (API) 150

SandRidge Energy MAZANEC 11-19 50

FLOOR, NO CUT, NO RES

3650
3700
3750
3800
3850

LS: OFF WHT- WHT, BLKY, MOD SFT- MOD FRM, FN-MED XLN, OCC CRSE XLN W/ OCC CHRT: BLK, HRD- V HRD, SH: BLK, BLKY SME PLTY, MOD FRM-MOD SFT, MED TXT, LMY, TR PYR, DOL: WHT, BLKY, FRM- HRD, V FN- FN XLN, YEL MIN FLOR, NO CUT, NO RES

LS: OFF WHT- WHT, BLKY, MOD SFT- MOD FRM, MED XLN, OCC CRSE XLN, OCC SNDY W/ TR CHRT: BLK, SME WHT, HRD- V HRD, DOL: WHT, BLKY, FRM- HRD, V FN- FN XLN, SH: BLK, OCC BLKY, MOD FRM-MOD SFT, MED TXT, LMY, YEL MIN FLOR, NO CUT, NO RES

LS: OFF WHT- WHT, BLKY, MOD SFT- MOD FRM, MED XLN, OCC CRSE XLN, OCC SNDY, DOL: WHT, BLKY, FRM- HRD, V FN- FN XLN, SH: BLK, OCC, BLKY, MOD FRM-MOD SFT, MED TXT, LMY, YEL MIN FLOR, NO CUT, NO RES

LS: OFF WHT- WHT, BLKY, MOD SFT- MOD FRM, MED XLN, OCC CRSE XLN, OCC SLTY, SH: BLK, OCC, BLKY, MOD FRM-MOD SFT, MED TXT, LMY, YEL MIN FLOR, NO CUT, NO RES

KD

KD

KD

KD

KD

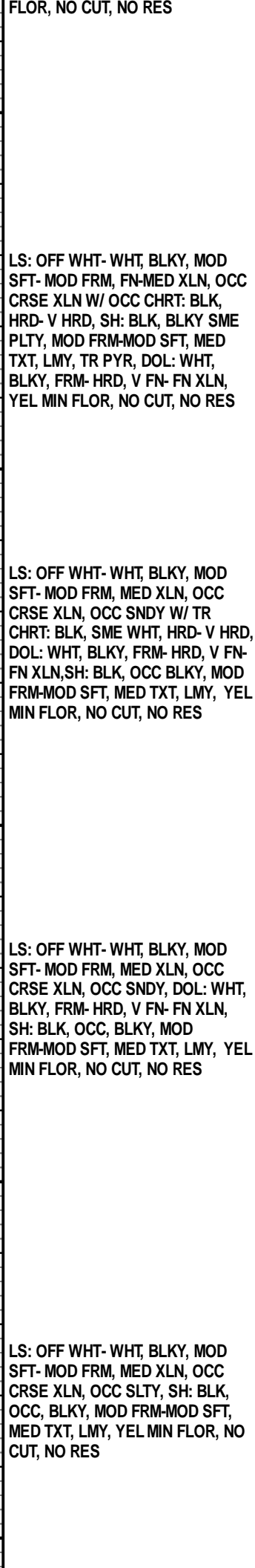
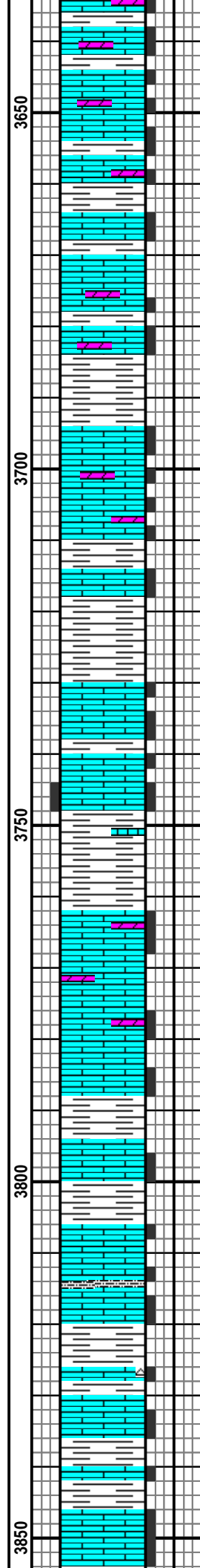
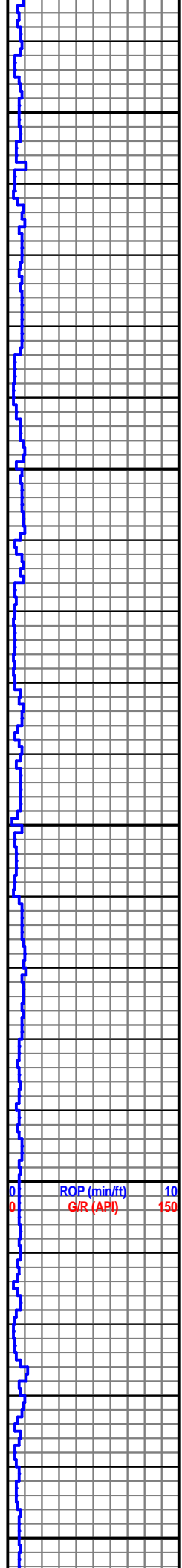
KD

KD

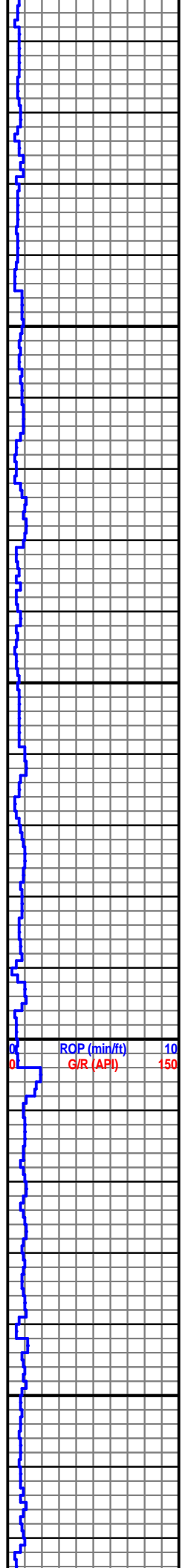
SandRidge Energy MAZANEC 11-19 50

WOB: 13-14 K
RPM: 100
SPM: 65
GPM: 800

ROP (min/ft) 10
G/R (API) 150



WOB: 13-14 K
RPM: 90
SPM: 65
GPM: 800

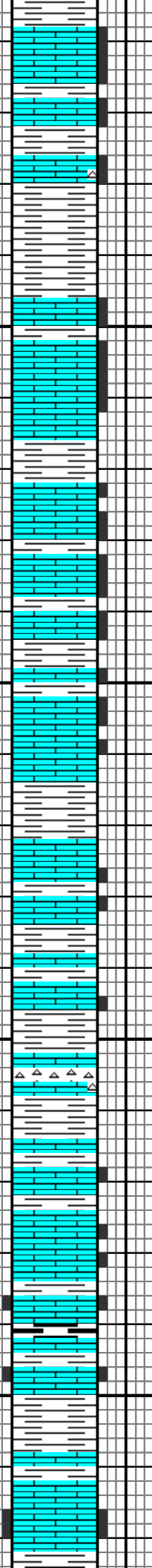


3900

3950

4000

4050



LS: OFF WHT- WHT, BLKY, MOD SFT- MOD FRM, MED - CRSE XLN, OCC SNDY, BLK, OCC, BLKY, MOD FRM-MOD SFT, MED TXT, TR PYR, YEL MIN FLOR, NO CUT, NO RES

LS: PRED OFF WHT- LT GY, SCAT WHT THRU OUT, BLKY, TR PLTY, FRM- MOD FRM, V FN- FN XLN, TR MICRO FN XLN, SH: MED GY- LT GY, BLKY, MOD SFT- SFT, TR MOD FRM, MOD SMTH- MOD RGH SLTY TXT, SCAT DULL YEL MIN FLOR, N/S

LS: MSTLY OFF WHT- WHT, BCMG WHT- OFF WHT, SCAT LT GY THRU OUT, BLKY, OCC PLTY, FRM- MOD FRM, SCAT CHLKY, V FN- MICRO FN XLN, SH: PRED GY, BLKY, MOD SFT- SFT, SME MOD FRM, MOD SMTH- MOD RGH SLTY TXT, TR FREE PYR, OCC DULL YEL- YEL MIN FLOR, N/S

LS: PRED WHT- OFF WHT, SCAT LT GY, OCC LT TAN, BLKY, TR PLTY, FRM- MOD FRM, OCC CHLKY, V FN- MICRO FN XLN, TR MOD FN XLN, SME BRECH, TR HL FRAC POR, SH: PRED GY, SME RED/ BRN, MOD SFT- SFT, SCAT MOD FRM, BLKY, MOD SMTH- MOD RGH TXT, TR FREE PYR, SME DULL YEL MIN FLOR, NO VIS CUT, NO RESD RING

HEEBNER @ 4,042' MD (-813')

LS: PRED OFF WHT- WHT, SME LT TAN, OCC LT GY, BLKY, SME PLTY, FRM- MOD FRM, OCC MOD SFT, V FN- MICRO FN XLN, DCRG MICRO FN XLN, SH: MSTLY MED GY, BLKY, TR PLTY, MOD SFT, MOD FRM

KD

BG 5 U.

KD

KD

KD

BG 2 U.

KD

SandRidge Energy MAZANEC 11-19 50

KD

WT: 9.6
VIS: 36

KD

TR PLTY, MOD SFT- MOD FRM,
SCAT SFT, MOD SMTH- MOD RGH
TXT, DCRG TR FREE PYR, SME
DULL YEL MIN FLOR, N/S

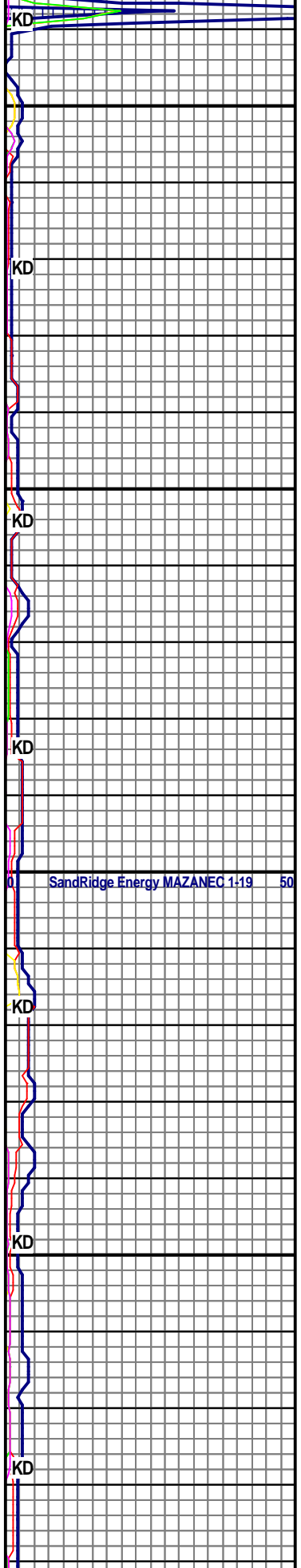
20 SECOND TEST
@ TRAP 72 U.

LS: MSTLY OFF WHT- LT GY, SCAT
WHT, SME LT TAN, BLKY- PLTY,
FRM- MOD FRM, TR CHLKY, V FN-
MICRO FN XLN, OCC BRECH, TR
HL FRAC POR, SH: MED GY- LT GY,
OCC DRK GY, BLKY, MOD FRM-
MOD SFT, SME SFT, OCC FREE
PYR, TR MICRO EMBD PYR, SCAT
YEL- DULL YEL FLOR, FNT YEL/
CLR CUT, SPTTD YEL RESD RING

LS: PRED OFF WHT- LT GY, SCAT
WHT, OCC LT TAN, MSTLY BLKY-
PLTY, PRED FRM- MOD FRM, OCC
CHLKY, MICRO FN- V FN XLN, SCAT
BRECH, TR HL FRAC POR, SH:
MED GY- LT GY, OCC DRK GY,
BLKY, MOD FRM- MOD SFT, SME
SFT, OCC FREE PYR, TR MICRO
EMBD PYR, SCAT YEL- DULL YEL
FLOR, N/S

LS: OFF WHT- LT TAN, SCAT WHT
THRU OUT, TR LT GY DCRG, BLKY,
OCC PLTY, FRM- BRIT, SCAT
CHLKY, OCC MOD FRM, MICRO FN-
V FN XLN, SCAT BRECH, TR HL
FRAC POR, SCAT YEL- BRI YEL
MIN FLOR, NO VIS CUT, NO RESD
RING

LS: OFF WHT- LT TAN, SLI INCRG
LT TAN, SCAT WHT, MSTLY BLKY,
TR PLTY, FRM- BRIT, ABUND
CHLKY, PRED MICRO FN XLN,
SCAT V FN XLN, ABUND BRECH,
OCC HL FRAC POR, SCAT YEL- BRI
YEL MIN FLOR, NO VIS CUT, NO
RESD RING, NO ODOR

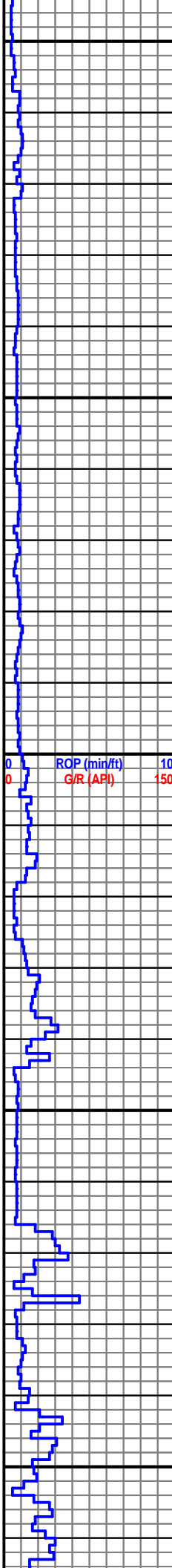


WOB: 14 K
RPM: 100
SPM: 70
GPM: 800

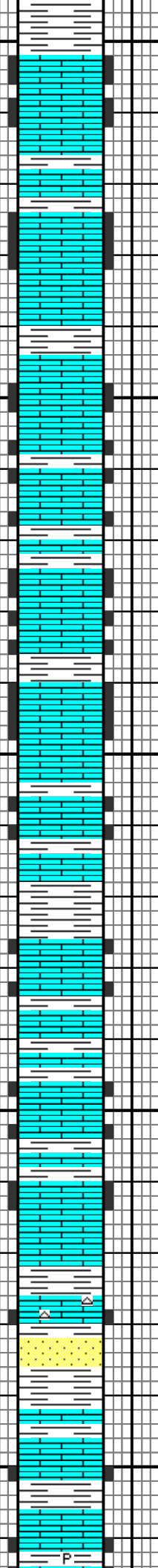
ROP (min/ft) 10
G/R (API) 150

SandRidge Energy MAZANEC 1-19 50

WOB: 13-14 K
RPM: 90
SPM: 75
GPM: 800



4300
4350
4400
4450
4500



LS: LT TAN- CRM, SCAT WHT, SME MTTLD, BLKY- PLTY, FRM- BRIT, SME CHLKY, MICRO FN- V FN XLN, SCAT BRECH, TR HL FRAC POR, TR FREE PYR, SCAY YEL MIN FLOR, NO VIS CUT, NO RESD RING

LS: PRED LT TAN- OFF WHT, SME WHT, TR LT GY, BLKY- PLTY, SLI INCRG PLTY, FRM- BRIT, DCRG BRIT, BCMG BRM- MOD FRM, SCAT CHLKY, MICRO FN- V FN XLN, SCAT BRECH, TR HL FRAC POR, SH: MSTLY GY, PLTY- BLKY, MOD SFT- MOD FRM, FN SLTY TXT, TR FREE PYR, SCAT YEL- DULL YEL MIN FLOR, NS

LS: MSTLY LT TAN- OFF WHT, SCAT WHT THRU OUT, DCRG LT TAN, BLKY- PLTY, MOD FRM- CHLKY, SCAT FRM, MICRO FN- V FN XLN, SCAT BRECH, OCC OOL, TR HL FRAC POR, SCAT YEL MIN FLOR, NO VIS CUT, NO RESD RING, NO ODOR

LS: WHT- OFF WHT, SME TN, BLKY-PLTY, VF XLN, MOD FRM, W/ TR CHT SH: LT GRY- DRK GRY, OCC BLK, PLTY- BLKY, MOD SFT- MOD FRM, FN SLTY TXT, TR SS STRGRS, SCAT YEL MIN FLOR, NO VIS CUT, NO RESD RING, NO ODOR

KD
KD
KD
KD
KD
KD

SandRidge Energy MAZANEC 1-19 50

MARMATON @ 4,513' MD (-1,284)

LS: WHT- OFF WHT, OCC TN, PLTY-BLKY, VF XLN, MOD FRM-FRM, SH: DULL GRY- BLK, PLTY-BLKY, MOD SFT- MOD FRM, OCC MICMICA, OCC PYR, SCAT YEL MIN FLOR, NO VIS CUT, NO RES RING, NO ODOR

KD

SH: BLK- LHT GRY, PLTY- BLKY, MOD FRM, FN TXT, LS: WHT- OFF WHT, FRM- HRD, BLKY- PLTY, VF XLN, YEL MIN FLOR, NO VIS CUT, NO RES RING, NO ODOR

KD

ROP (min/ft) 10
G/R (API) 150

SandRidge Energy MAZANEC 1-19 50

LS: TN, SME OFF WHT, PLTY-BLKY, FRM- HRD, VF XLN, OCC BRECH, SH: BLK, SME GRY, OCC ORG/RED, MOD FRM, FN- TXT, TR PYR, YEL MIN FLOR, NO VIS CUT, NO RES RING, NO ODOR

20 SECOND TEST @ TRAP 86 U.

CHEROKEE 4,642' MD (-1,413)

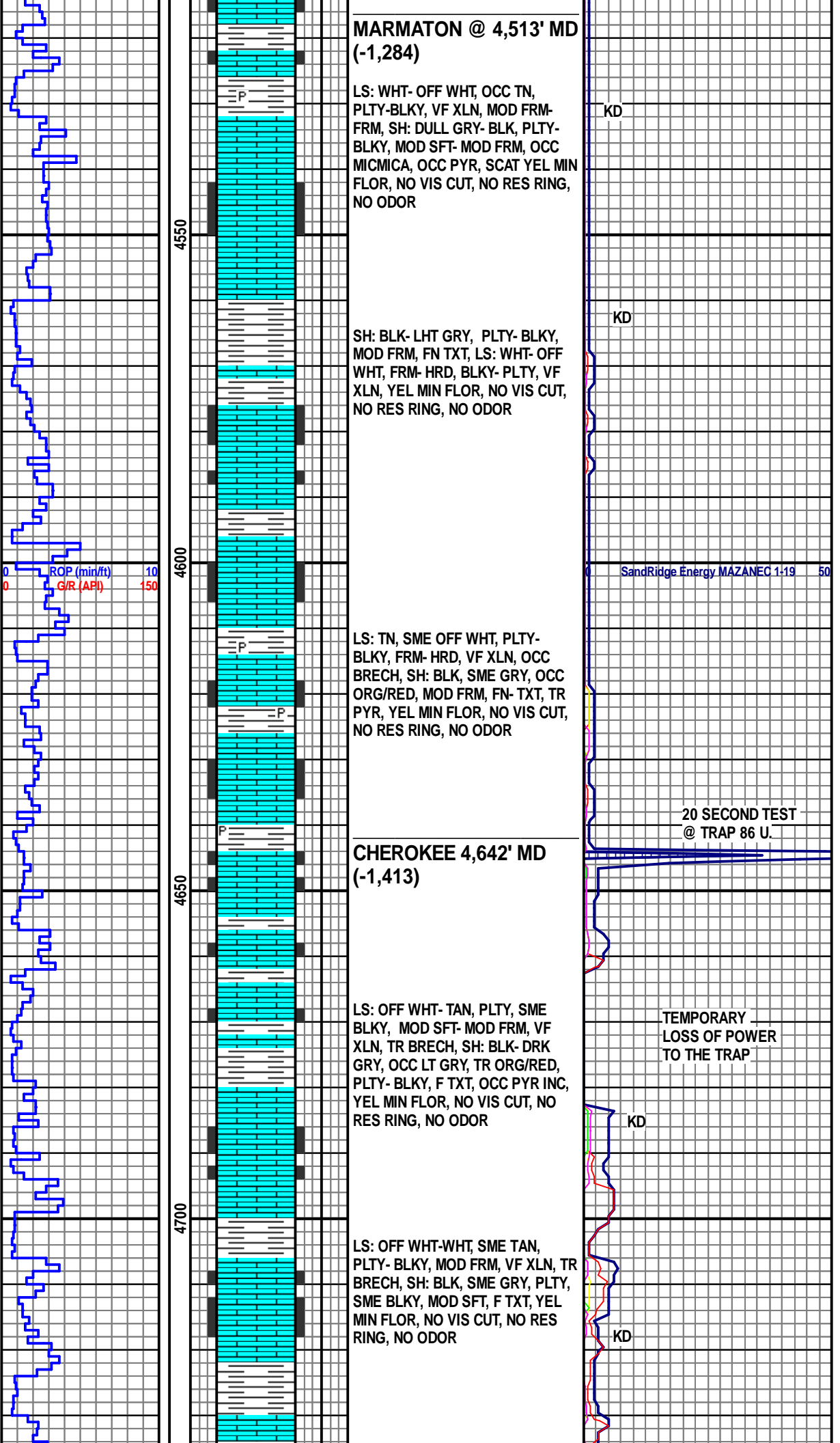
LS: OFF WHT- TAN, PLTY, SME BLKY, MOD SFT- MOD FRM, VF XLN, TR BRECH, SH: BLK- DRK GRY, OCC LT GRY, TR ORG/RED, PLTY- BLKY, F TXT, OCC PYR INC, YEL MIN FLOR, NO VIS CUT, NO RES RING, NO ODOR

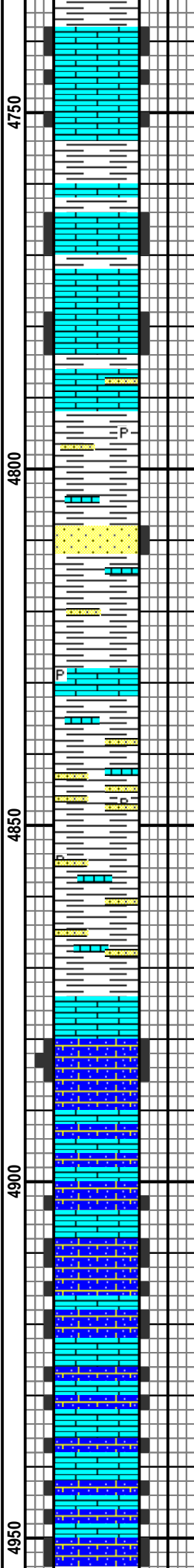
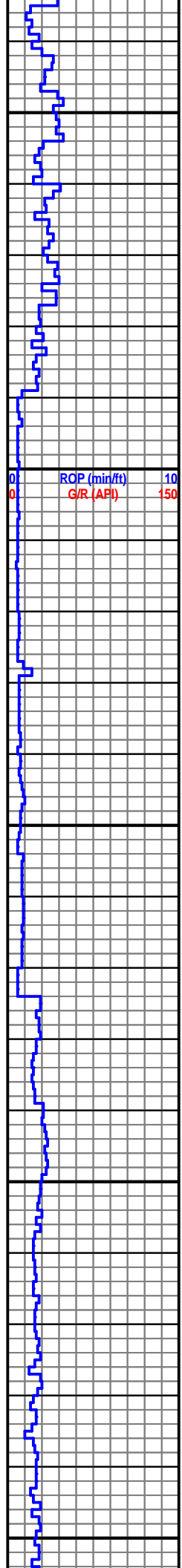
TEMPORARY LOSS OF POWER TO THE TRAP

KD

LS: OFF WHT-WHT, SME TAN, PLTY- BLKY, MOD FRM, VF XLN, TR BRECH, SH: BLK, SME GRY, PLTY, SME BLKY, MOD SFT, F TXT, YEL MIN FLOR, NO VIS CUT, NO RES RING, NO ODOR

KD





LS: OFF WHT- WHT, PLTY, SME BLKY, MOD FRM- FRM, VF XLN, TR BRECH, SH: BLK- MED GRY, MOD SFT- MOD FRM, OCC FRM, PLTY, SME BLKY, VF TXT, YEL MIN FLOR, NO VIS CUT, NO RES RING, NO ODOR

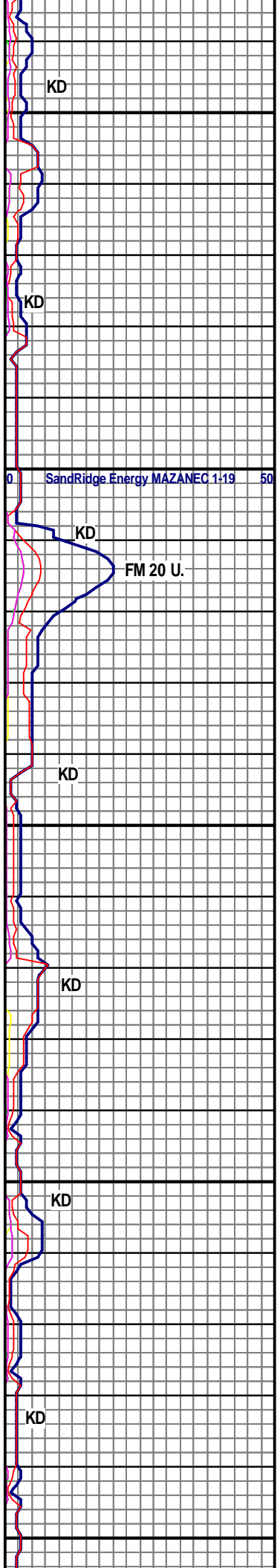
LS: OFF WHT- WHT, TAN, PLTY, OCC BLKY, MOD FRM- FRM, VF XLN, TR BRECH, TR CRT, SH: BLK- MED GRY, OCC ORG/RED, MOD SFT- FRM, PLTY, SME BLKY, VF TXT, TR SS STRNGRS, YEL MIN FLOR, NO VIS CUT, NO RES RING, NO ODOR

MORROW @ 4,808' MD (-1,579')

SH: BLK- DRK GRY, OCC LHT GRY, PLTY, SME BLKY, SFT- MOD SFT, F TXT, OCC PYR, TR SND, LS: TAN, OFF WHT, MOD SFT, OCC FRM, PLTY, OCC BLKY, FN TXT, TR SS: OFF WHT- WHT, TR LT TAN, CONS, FR SRT, V FN GRNS, MOD FRM- SLI FRI, TR YEL MIN FLOR, NO VIS CUT, NO RES RING, NO ODOR

MISSISSIPPIAN/ ST GENEVIEVE @ 4,874' MD (-1,645')

LS: MSTLY CRM- LT TAN, INCRG LT TAN, OCC WHT, PRED SNDY, MSTLY BLKY, MOD FRM, SME FRM, TR MOD HD, MICRO FN- V FN XLN, TR HL FRAC POR, PR INTRGRNLR POR, TR CHT: OFF WHT- WHT, ANG, V HD- HD, SCAT DULL YEL- YEL MIN FLOR, NO VIS CUT, NO RESD RING, NO ODOR



KD

KD

KD

FM 20 U.

KD

KD

KD

KD

ROP (min/ft) 10
G/R (API) 150

SandRidge Energy MAZANEC 1-19 50

**ST LOUIS 4,958' MD
(-1,729')**

LS: PRED LT TAN- OFF WHT, SCAT
WHT THRU OUT, OCC MTTLD,
MSTLY SNDY, TR OOL, TR FREE
OOID, BLKY, OCC PLTY, FRM- MOD
FRM, TR BRIT, MICRO FN- V FN
XLN, PR INTRGRNLR POR, TR HL
FRAC POR, TR FREE PYR, SME
DULL YEL- YEL MIN FLOR, NO VIS
CUT, NO RESD RING, NO ODOR

LS: MSTLY LT TAN- OFF WHT, SME
WHT TR LT GY, DCRG SNDY, BCMG
OOL, TR FREE OOIDS, BLKY-
PLTY, INCRG PLTY, FRM- MOD FRM,
TR BRIT, V FN- MICRO FN XLN, PR
INTRGRLR POR, TR HL FRAC POR,
TR FRE PYR, TR MICRO EMBD
PYR, SME DULL YEL FLOR, NO VIS
CUT, NO RESD RING, NO ODOR

LS: PRED LT TAN, SCAT OFF WHT-
WHT, DCRG WHT, SME LT GY, OOL,
SME SNDY, OCC FREE OOIDS,
BLKY, SME PLTY, FRM- MOD FRM,
TR BRIT, MICRO FN- V FN XLN, PR
INTRGRNLR POR, TR HL FRAC
POR, CHT: OFF WHT- TAN, TR OPQ,
V ANG- ANG, V HD- HD, TR DULL
YEL MIN FLOR, N/S

**TD WELL @ 5,100' MD
ON 12/17/2013**

**SANDRIDGE ENERGY
INC
MAZANEC 1735 1-19,
SEC. 19, T17S, R35W,
WICHITA CO., KS
3,220' GL 3,229' KB**

ROP (min/ft) 10
G/R (API) 150

ROP SCALE 0
TO 10

SandRidge Energy MAZANEC 1-19 50

GAS SCALE 0 TO 50

5000

5050

5100

50

KD

KD

KD

KD

KD