



Pioneer Energy Services

# Borehole Compensated Sonic Log

**Company** American Warrior, Inc.  
**Well** Neeley # 10-33  
**Field** Congdon  
**County** Finney  
**State** Kansas

**Location** 1197' FSL & 339' FEL  
**Sec:** 33 **Twp:** 23 S **Rge:** 32 W

Other Services  
 CNL/CDL  
 MEL/DIL

Permanent Datum Ground Level Elevation 2849  
 Log Measured From Kelly Bushing 11 Ft. Above Perm. Datum  
 Drilling Measured From Kelly Bushing

Elevation  
 K.B. 2860  
 D.F. 2849  
 G.L. 2849

Date	02-28-2014	
Run Number	Two	
Type Log	BHC Sonic	
Depth Driller	4900	
Depth Logger	4900	
Bottom Logged Interval	4889	
Top Logged Interval	1700	
Type Fluid In Hole	Chemical	
Salinity, PPM CL	2200	
Density	9.3	
Level	Full	
Max. Rec. Temp. F	127	
Operating Rig Time	5 Hours	
Equipment -- Location	91 Hays	
Recorded By	Y. Ruiz	
Witnessed By	Kevin Timson	

Borehole Record				Casing Record			
Run No.	Bit	From	To	Size	Wgt.	From	To
One	12.25	00	1755	8.625	23#	00	1755
Two	7.875	1755	TD				

<<< Fold Here >>>

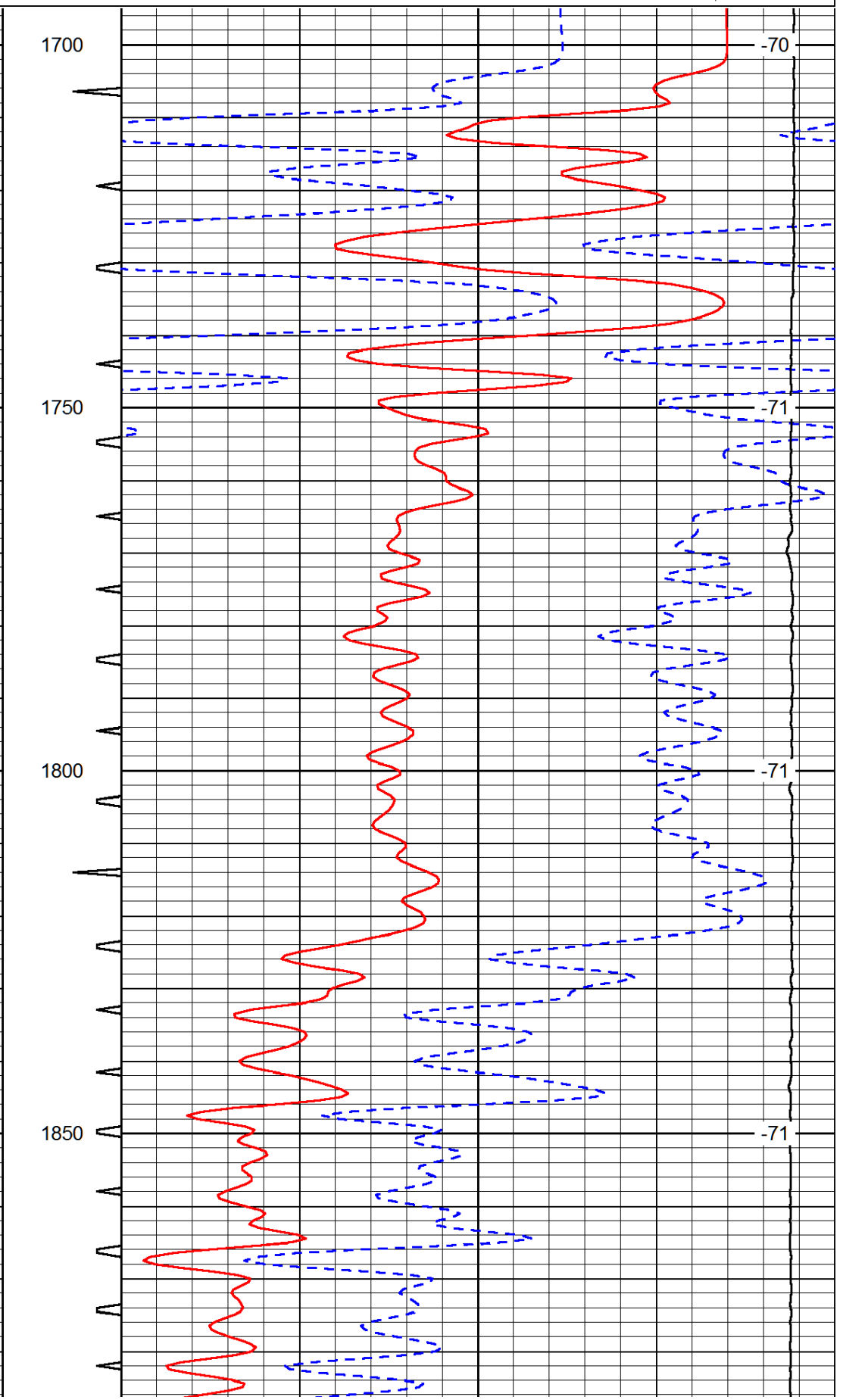
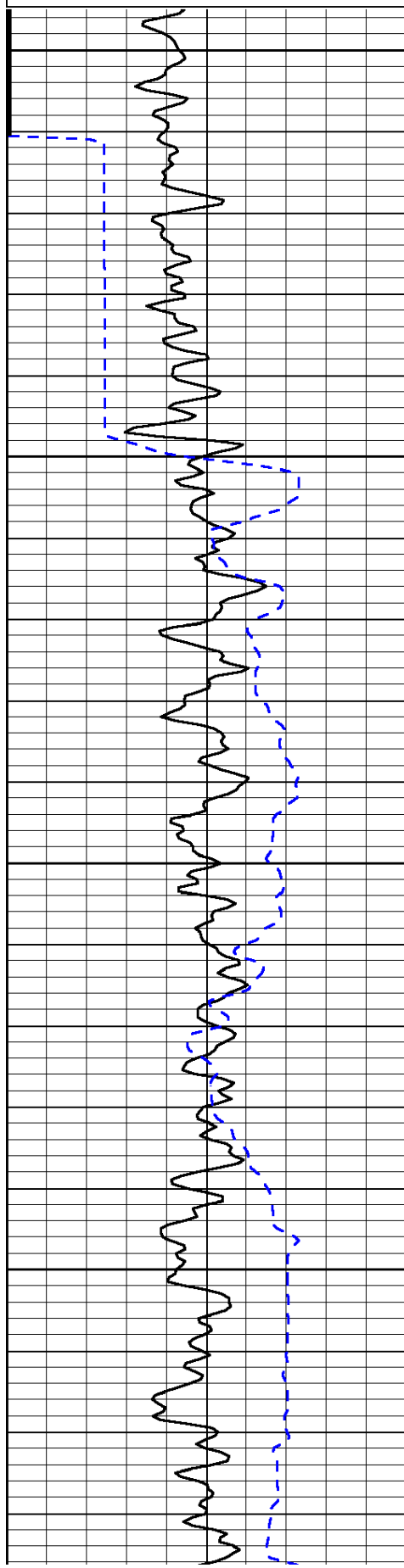
All interpretations are opinions based on inferences from electrical or other measurements and we cannot and do not guarantee the accuracy or correctness of any interpretation, and we shall not, except in the case of gross or willful negligence on our part, be liable or responsible for any loss, costs, damages, or expenses incurred or sustained by anyone resulting from any interpretation made by any of our officers, agents or employees. These interpretations are also subject to our general terms and conditions set out in our current Price Schedule.

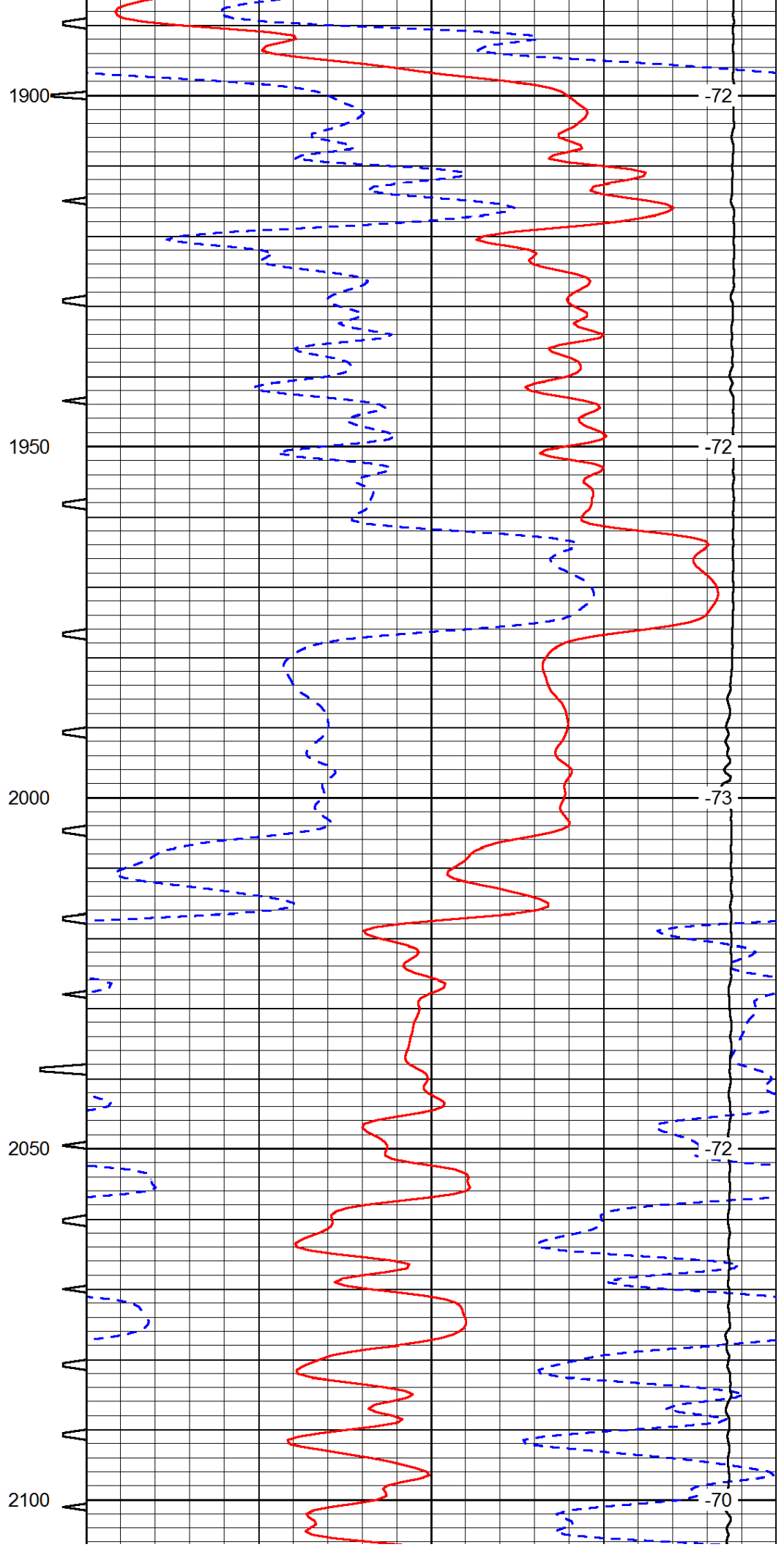
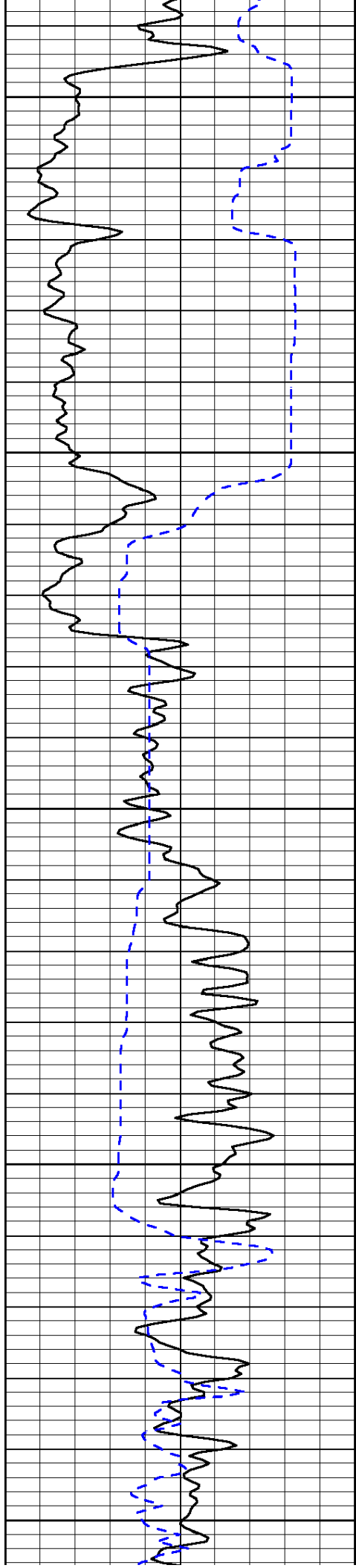
Comments

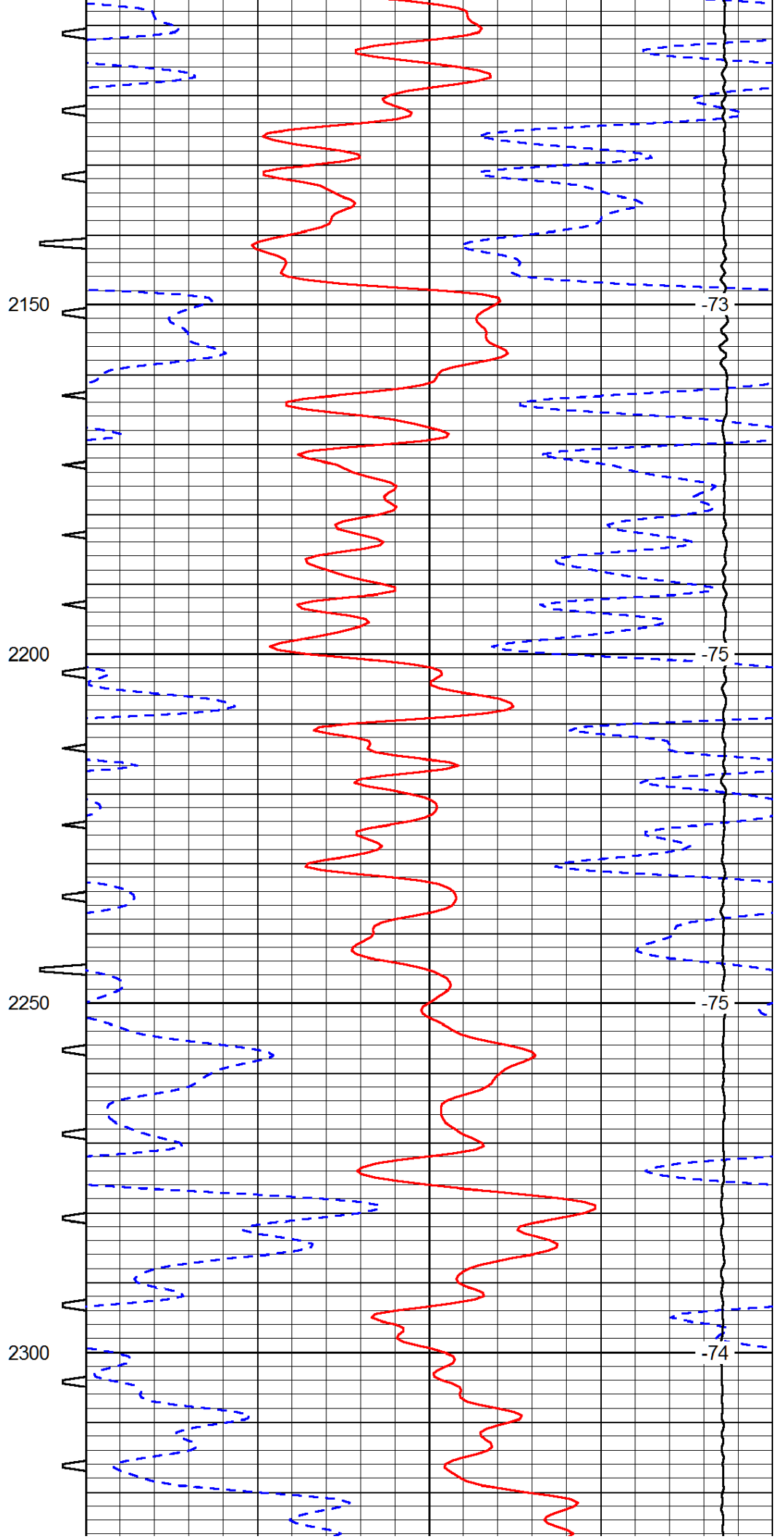
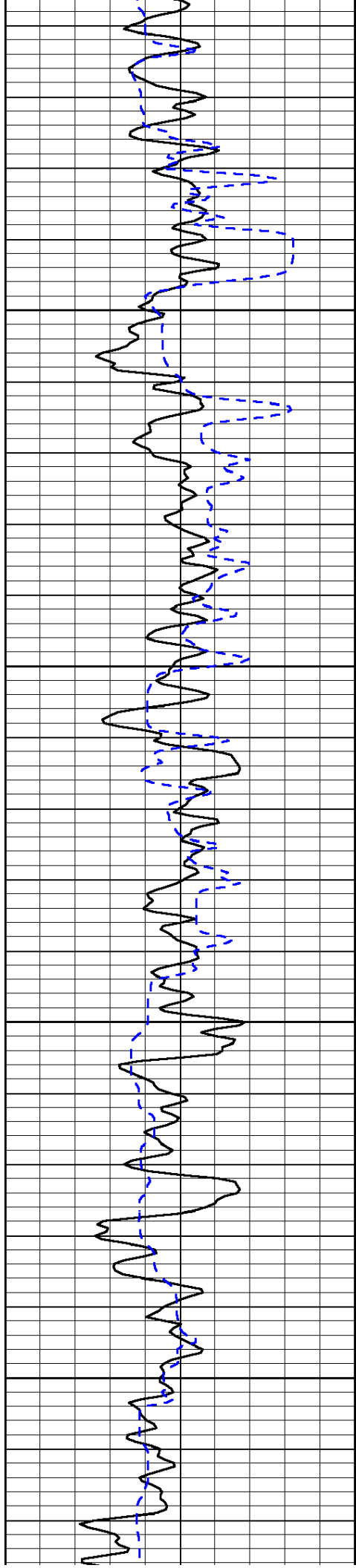
Thank you for using Log-Tech, Inc.  
 (785) 625-3858  
 Garden City,  
 1 1/4 North on Jennie Barker,  
 West and North into

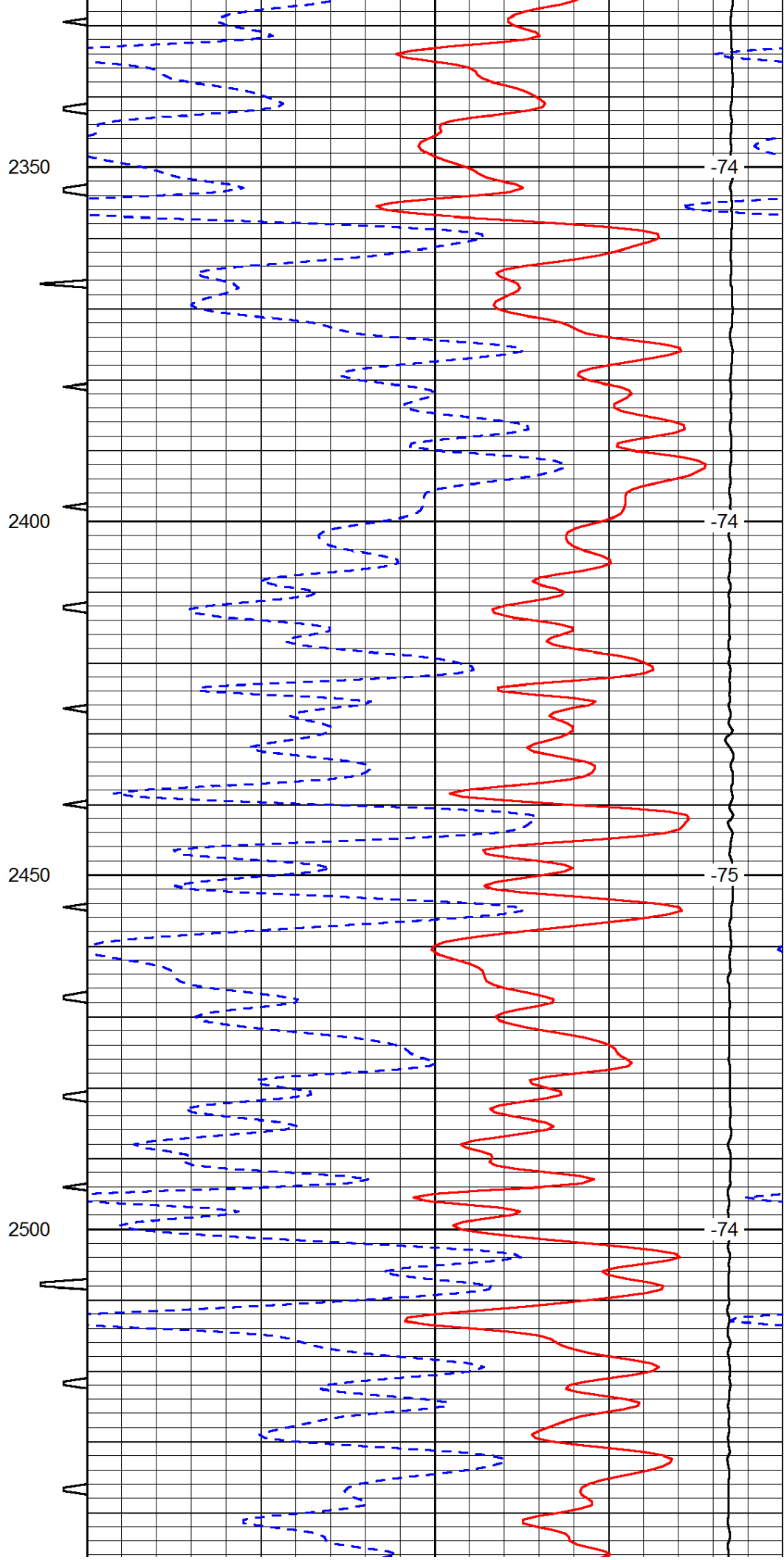
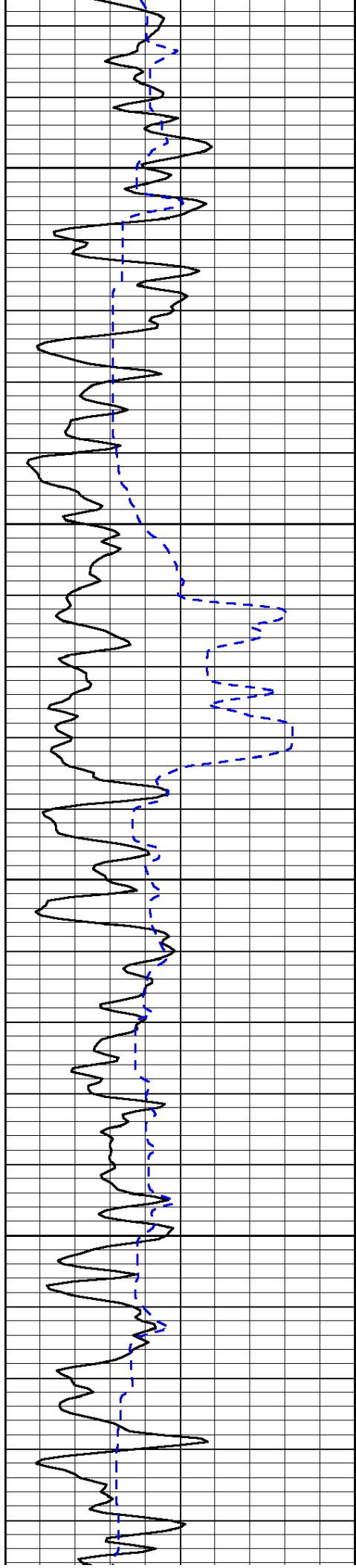
Database File: amerinan\_warrior\_022814hd.db  
 Dataset Pathname: DIL/awst4  
 Presentation Format: sonic  
 Dataset Creation: Fri Feb 28 18:32:53 2014  
 Charted by: Depth in Feet scaled 1:240

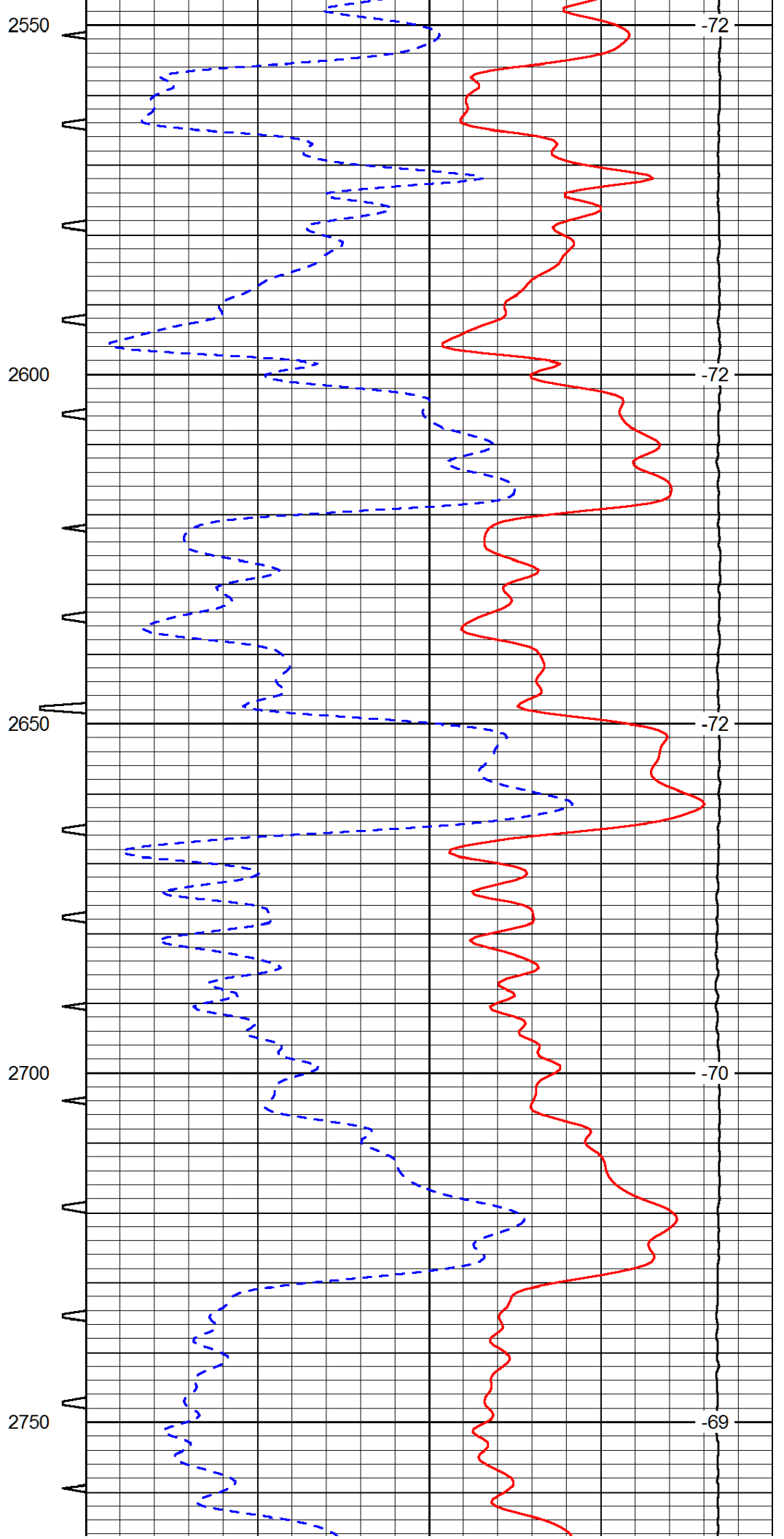
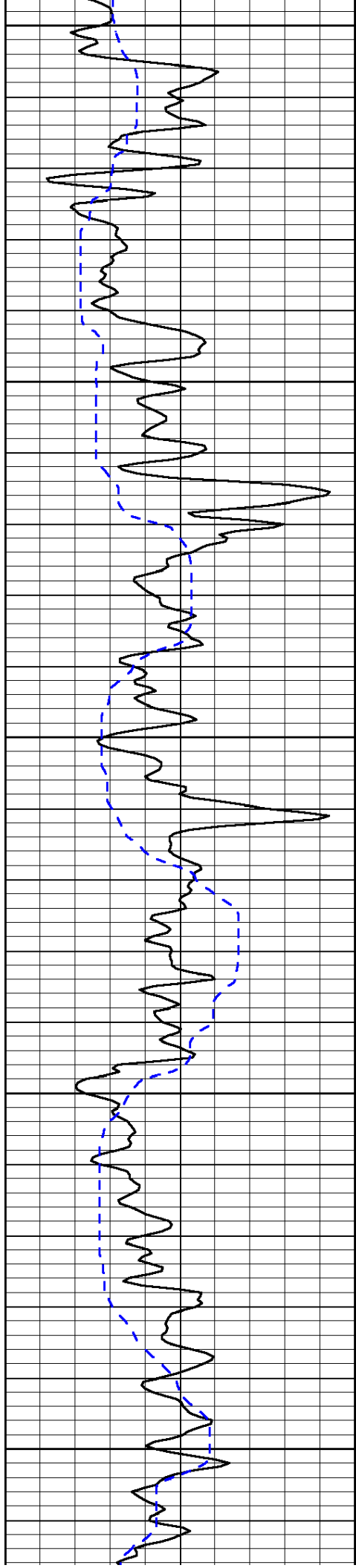
0	Gamma Ray (GAPI)	150	Sonic Int	140	Delta Time (usec/ft) (usec/ft)	40
150	Gamma Ray (GAPI)	300	5 (msec) 0	30	Sonic Porosity (pu)	-10
6	dCAL (in)	16		15000	LTEN (lb) (lb)	0
						LSPD (ft/min)

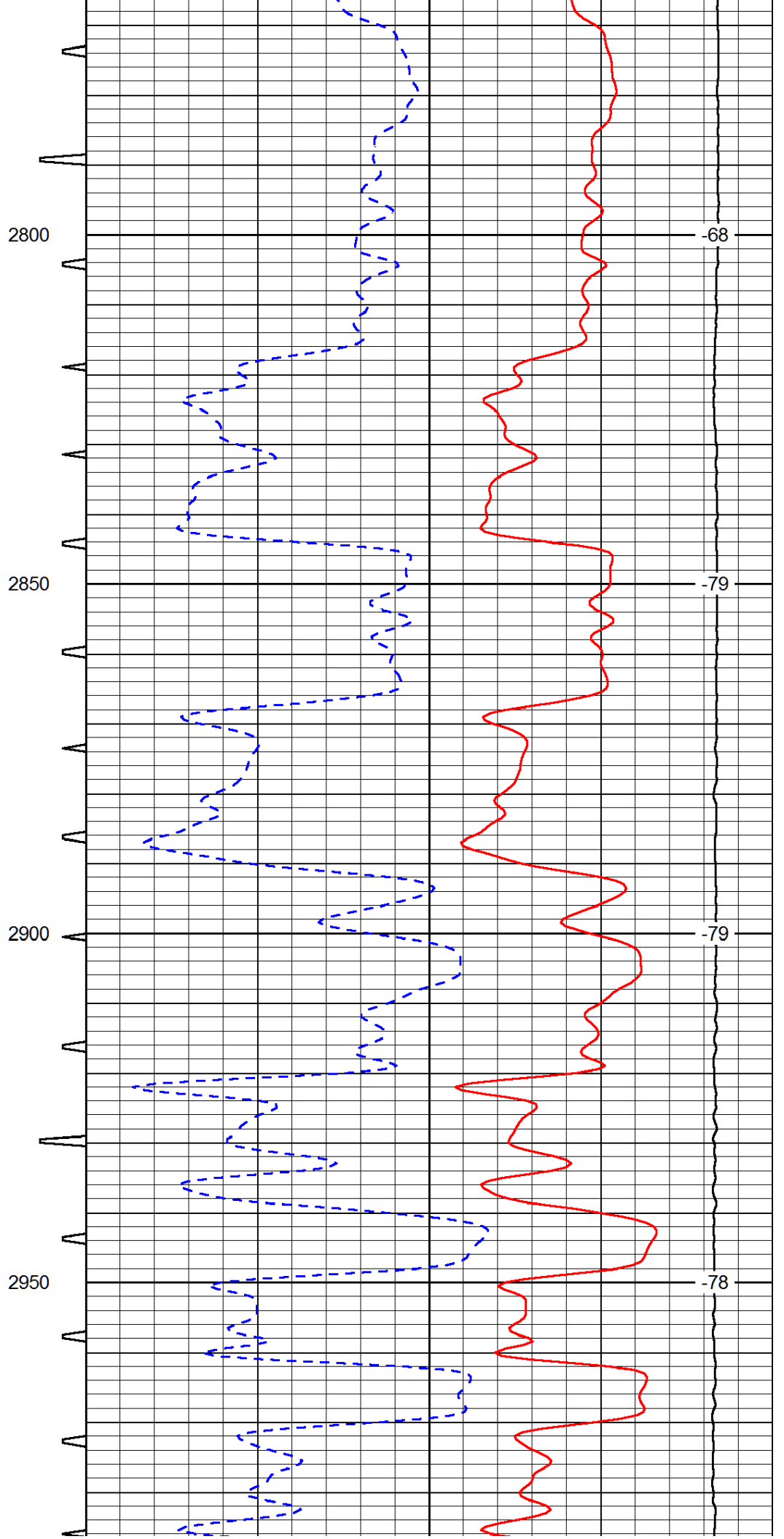
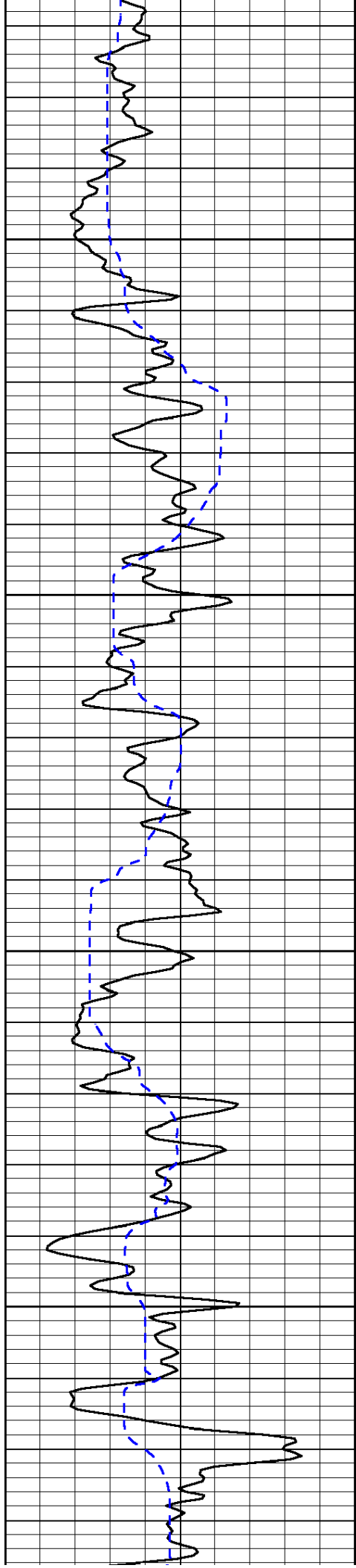


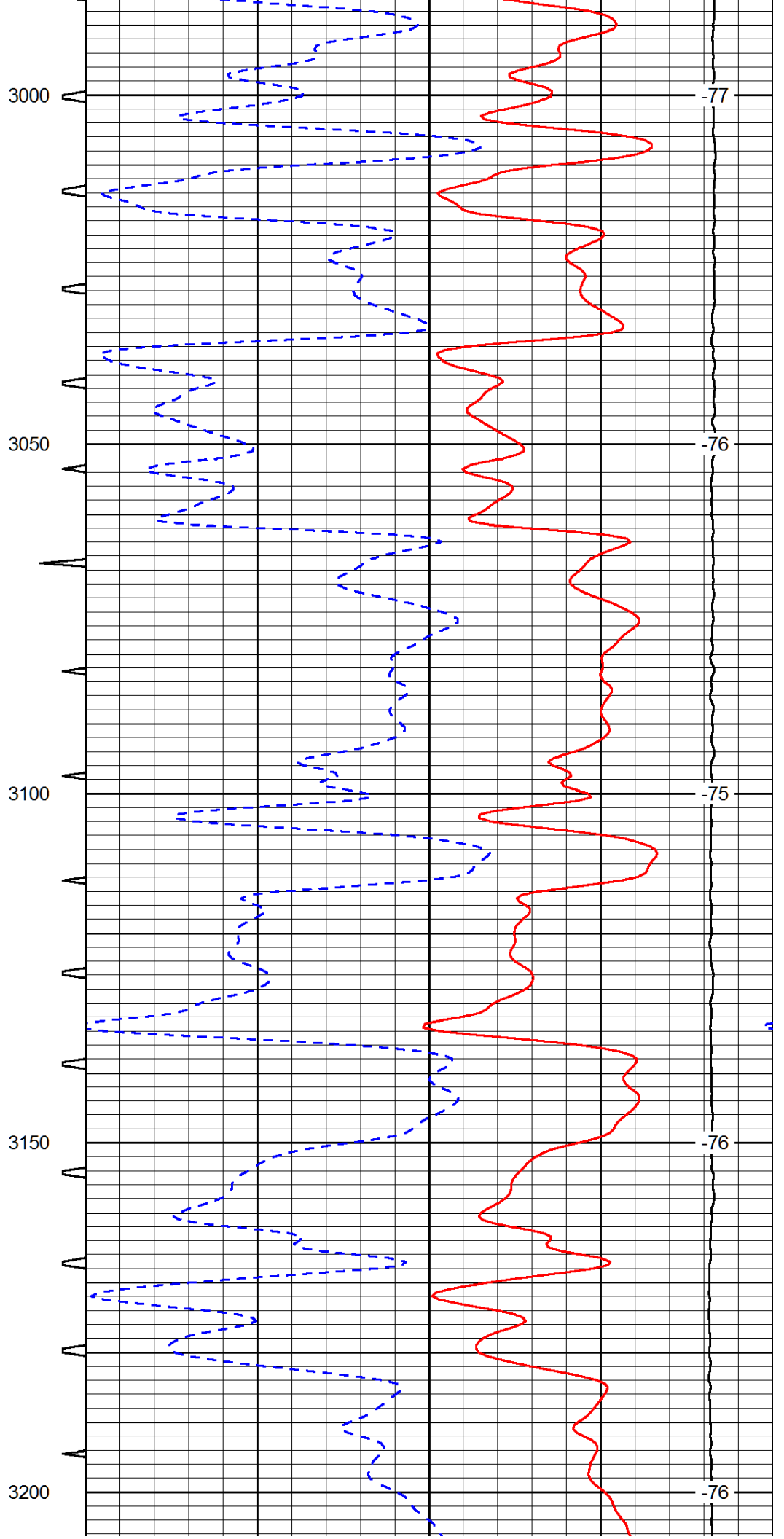
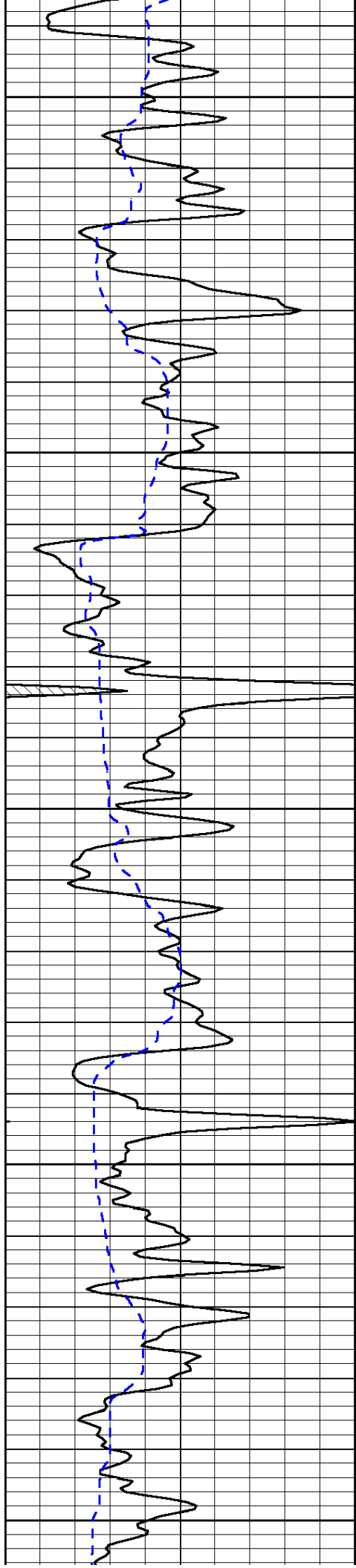


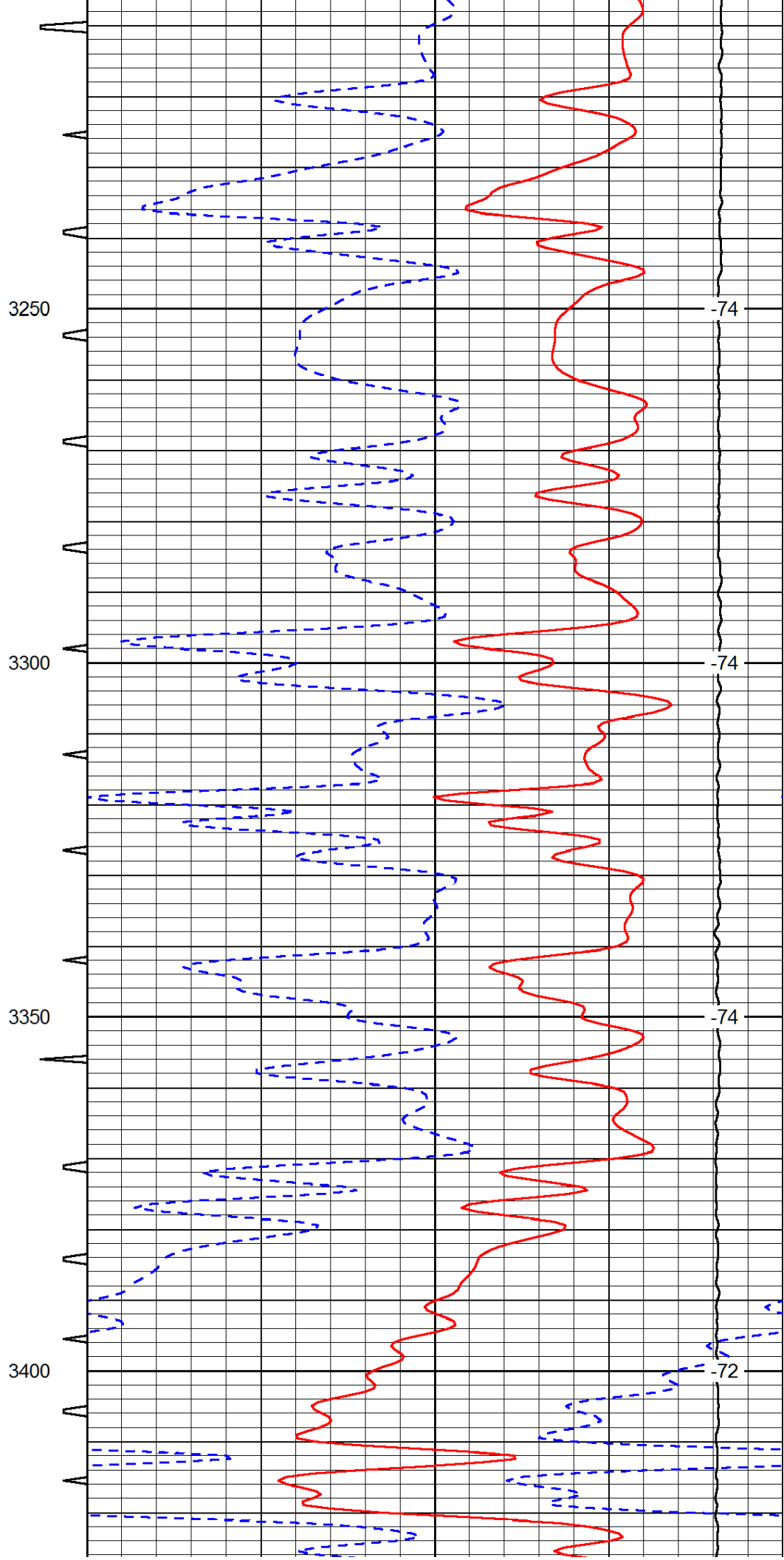
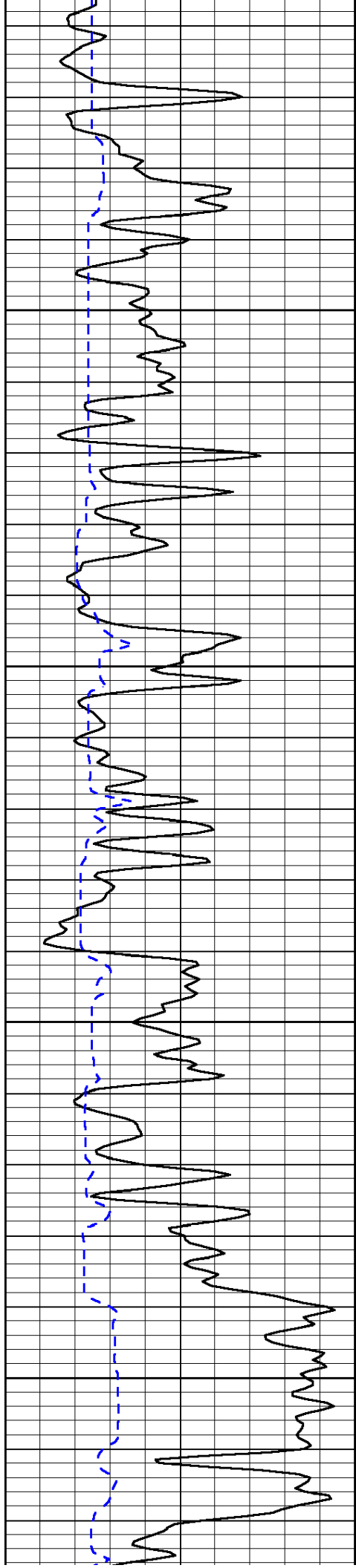


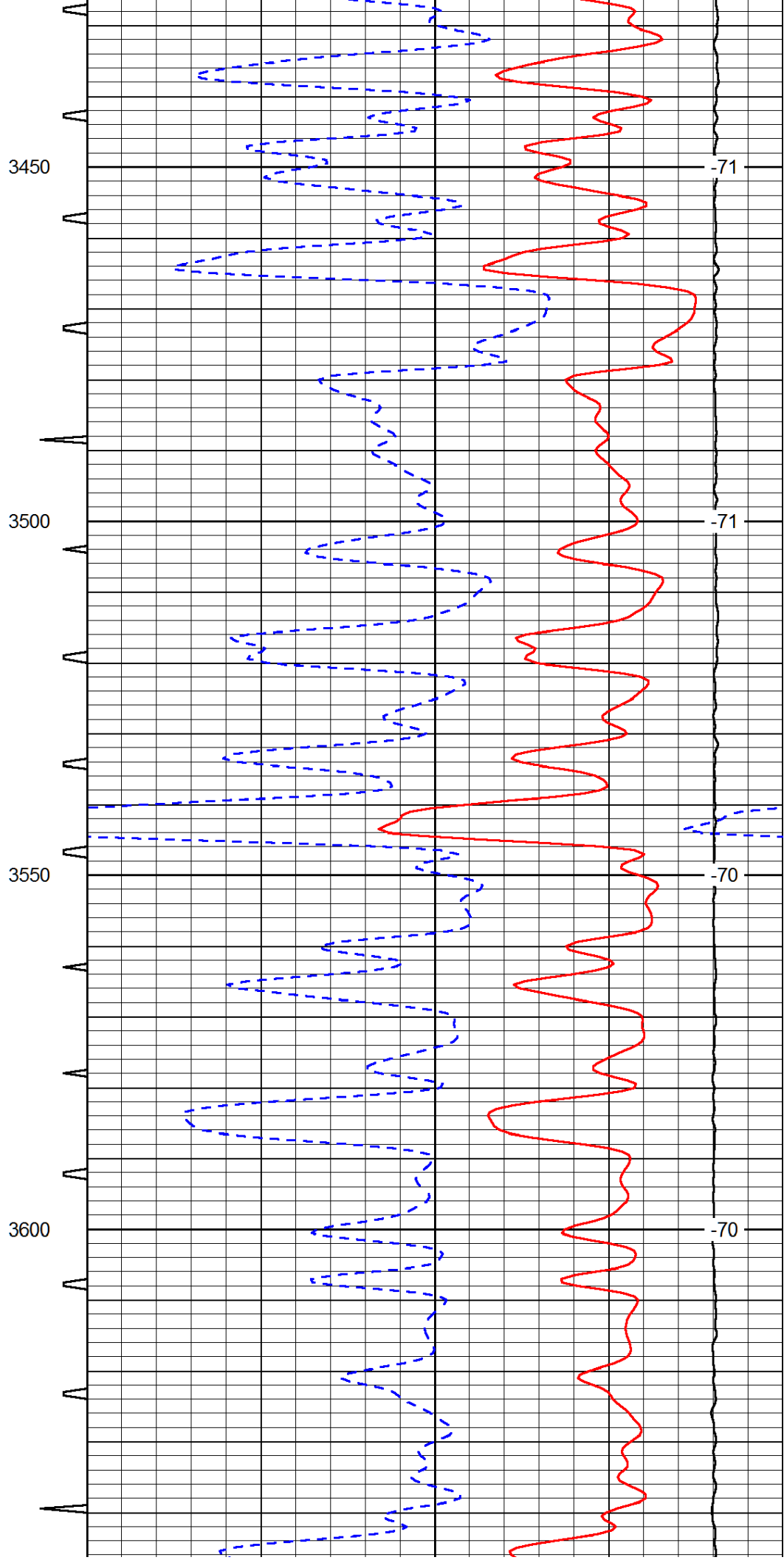
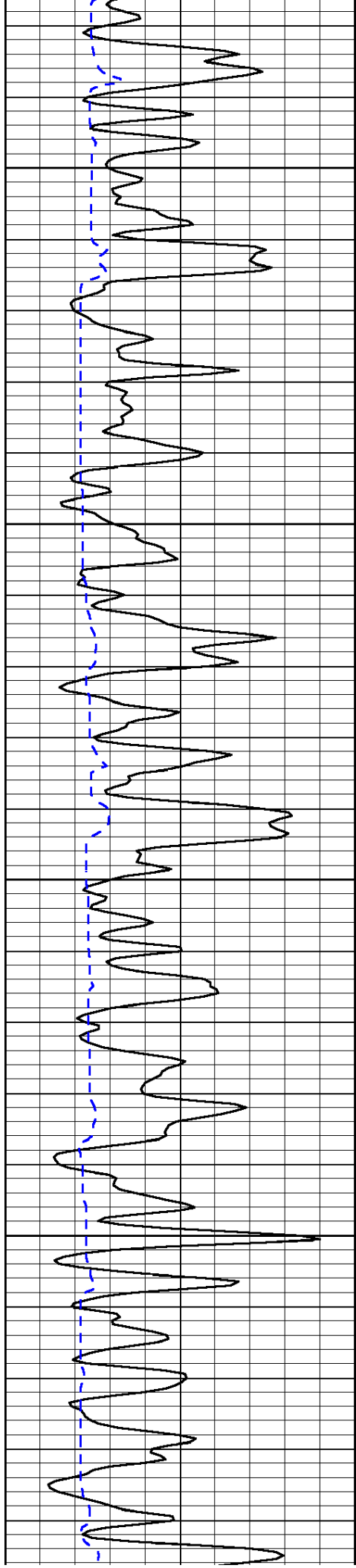


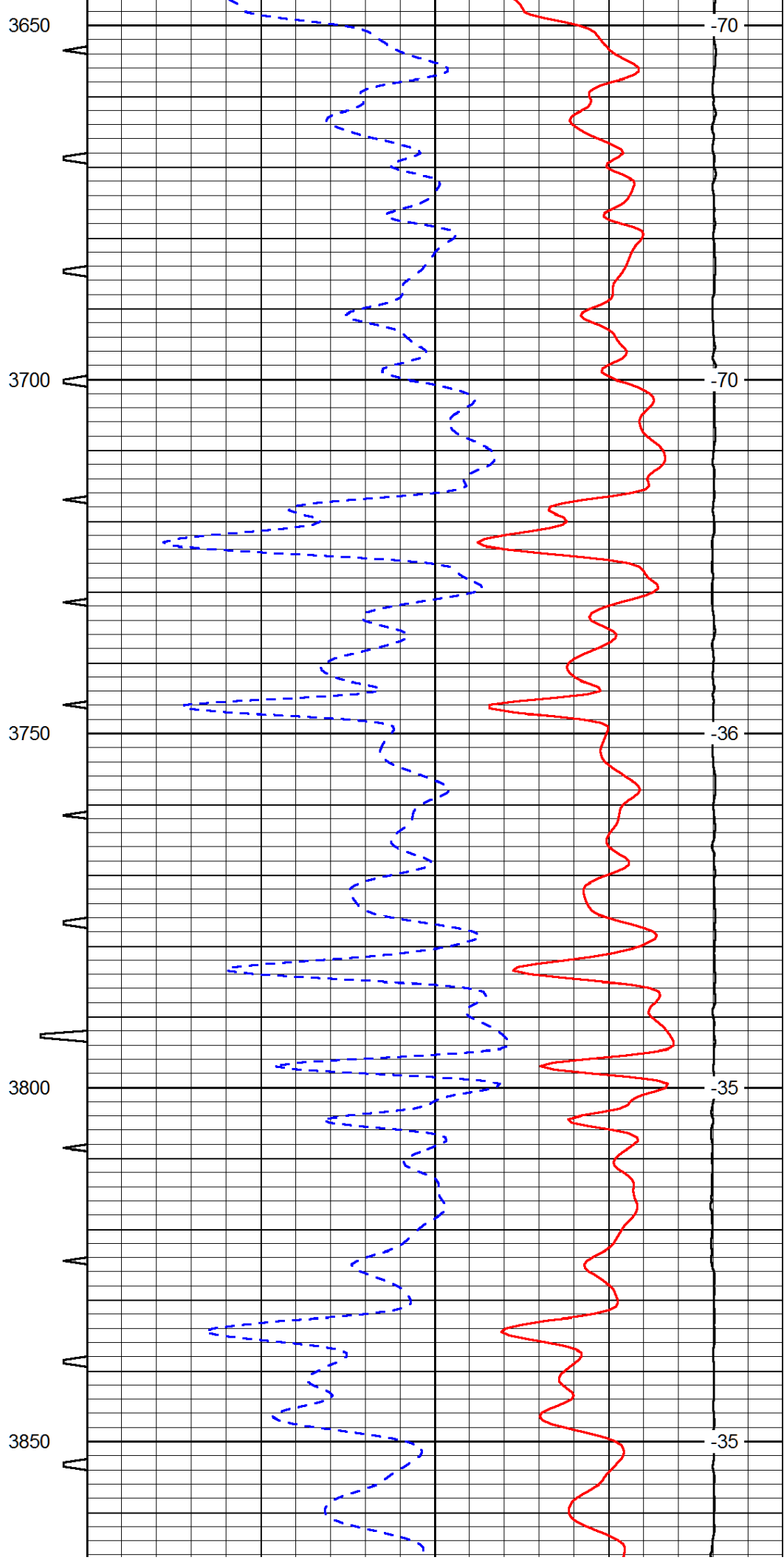
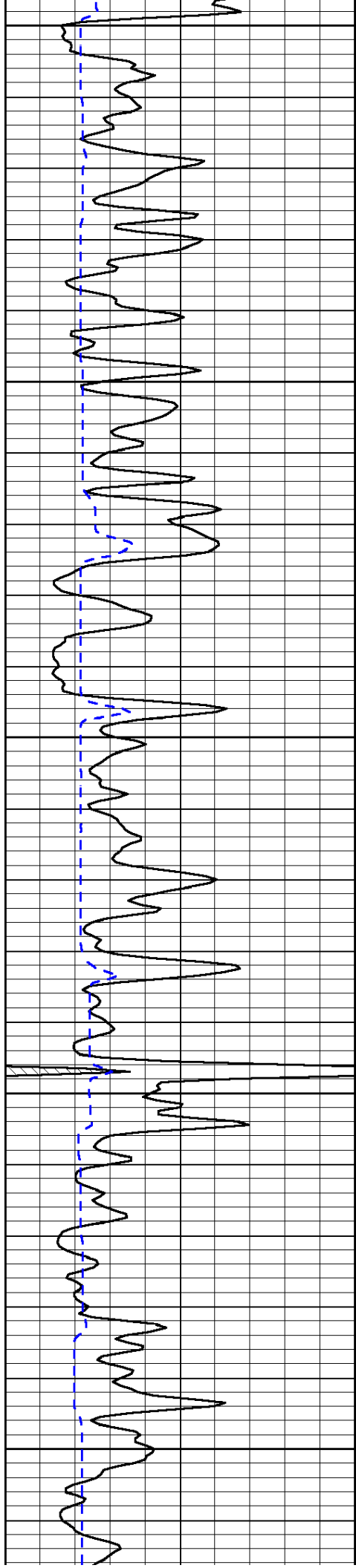


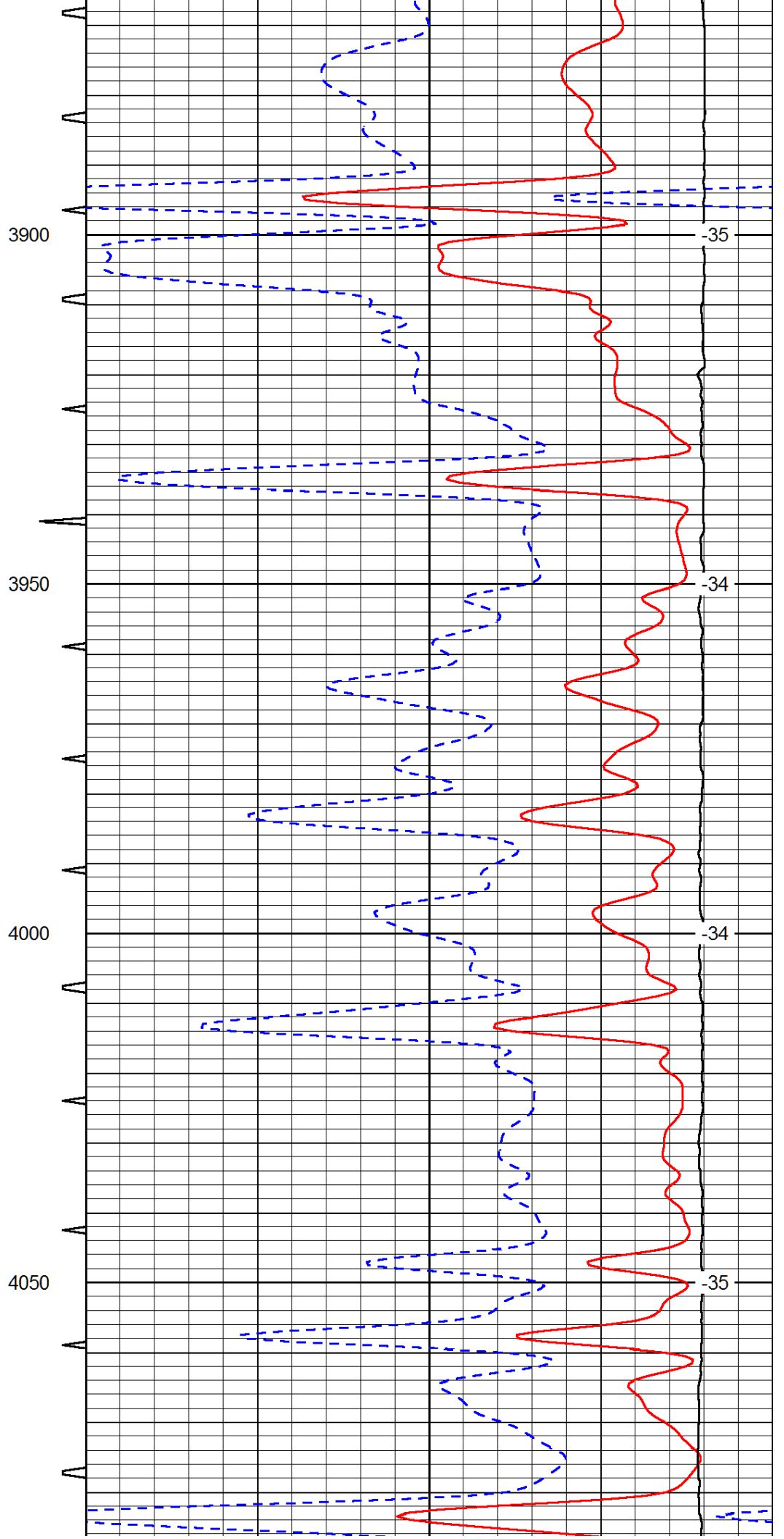
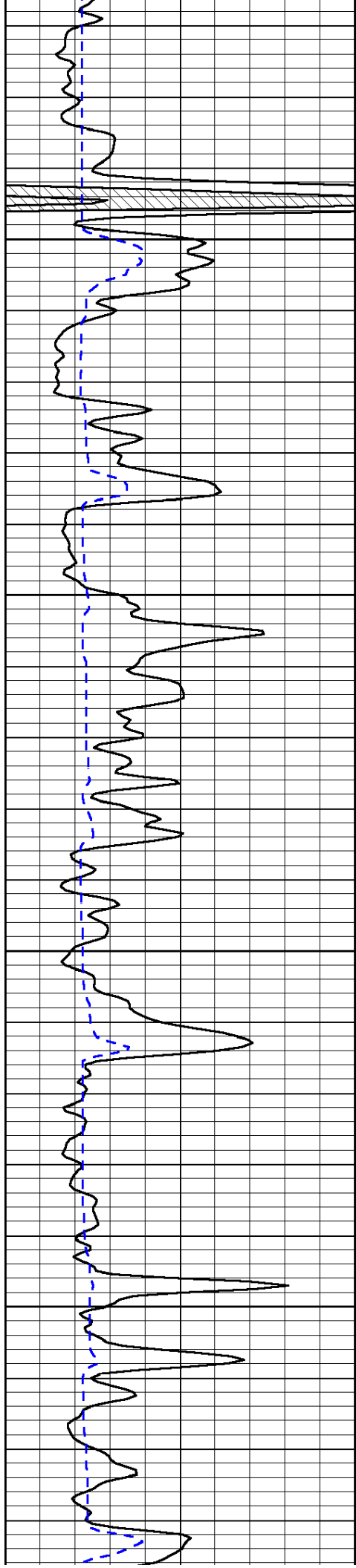


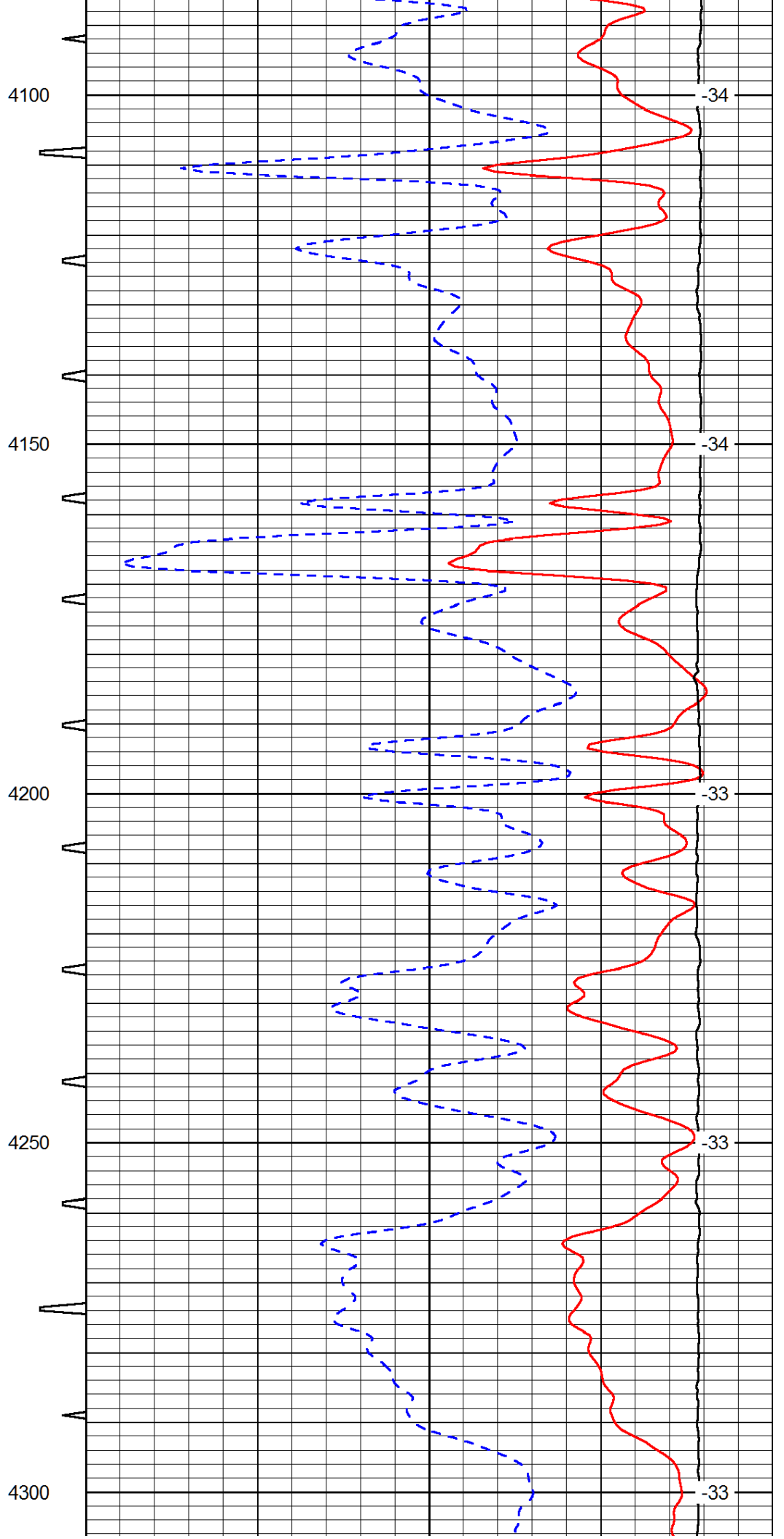
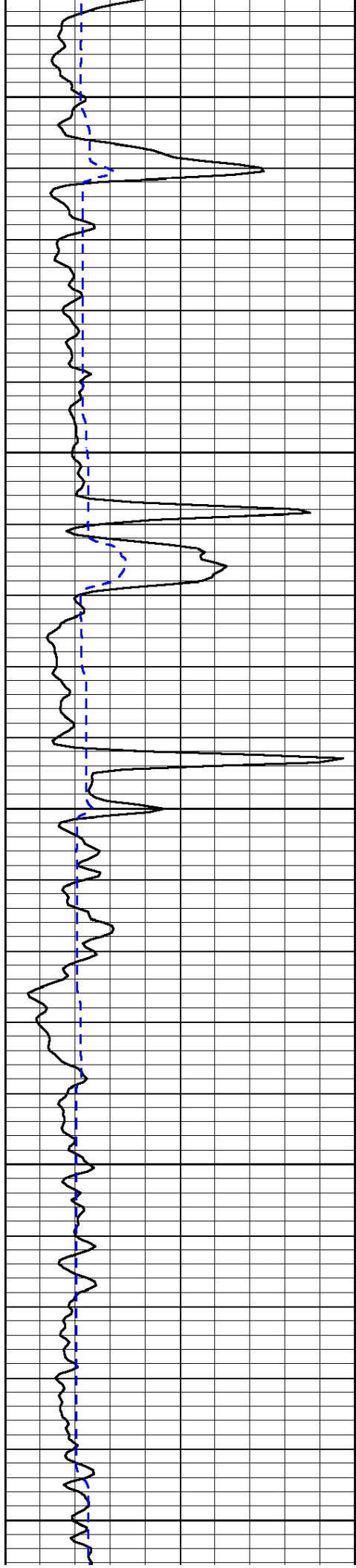


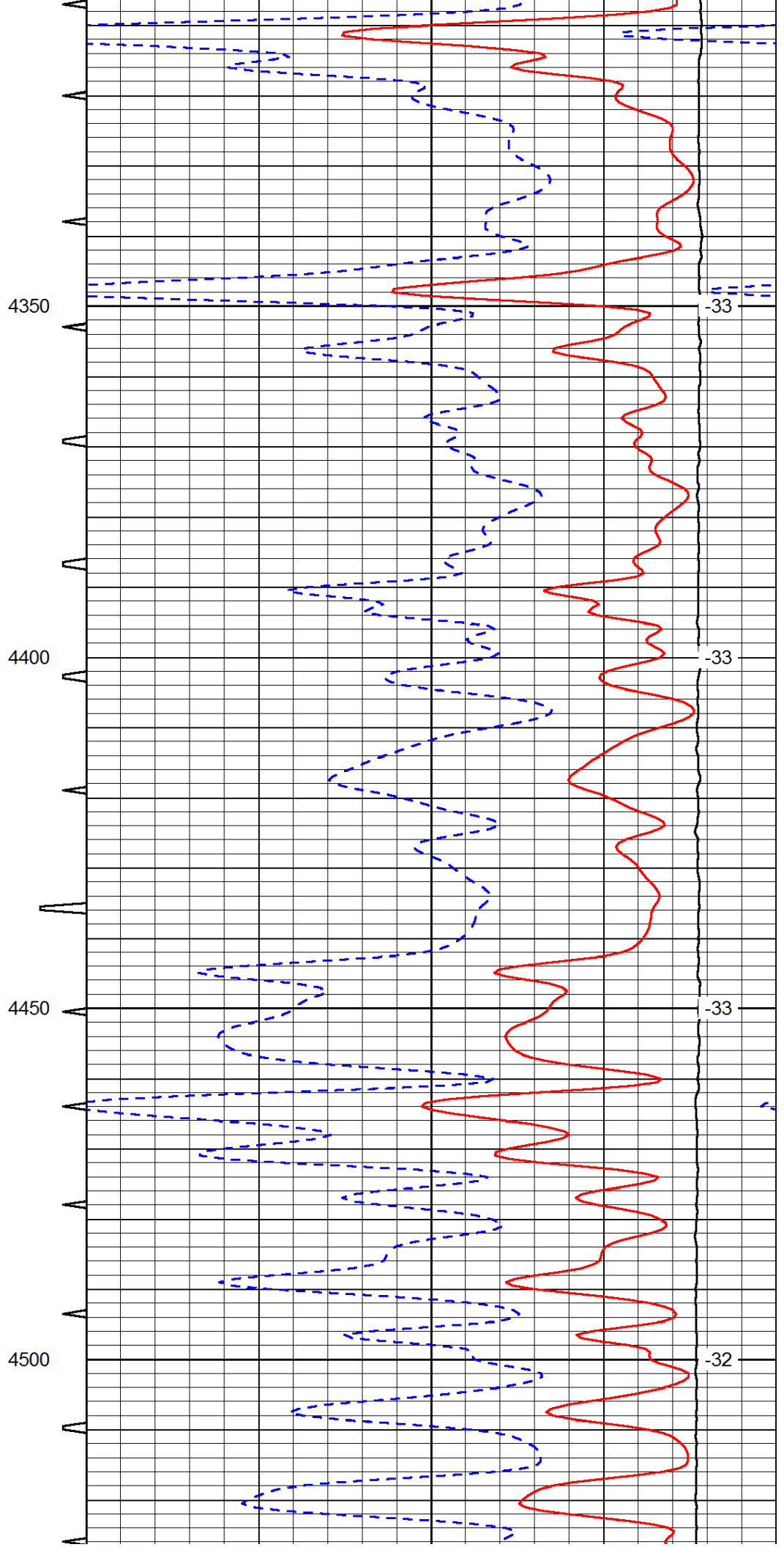
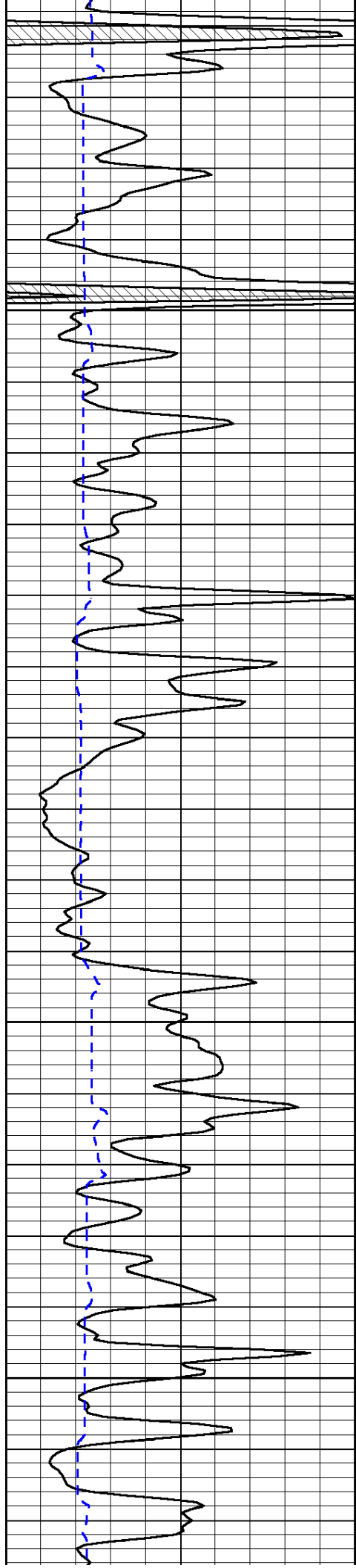


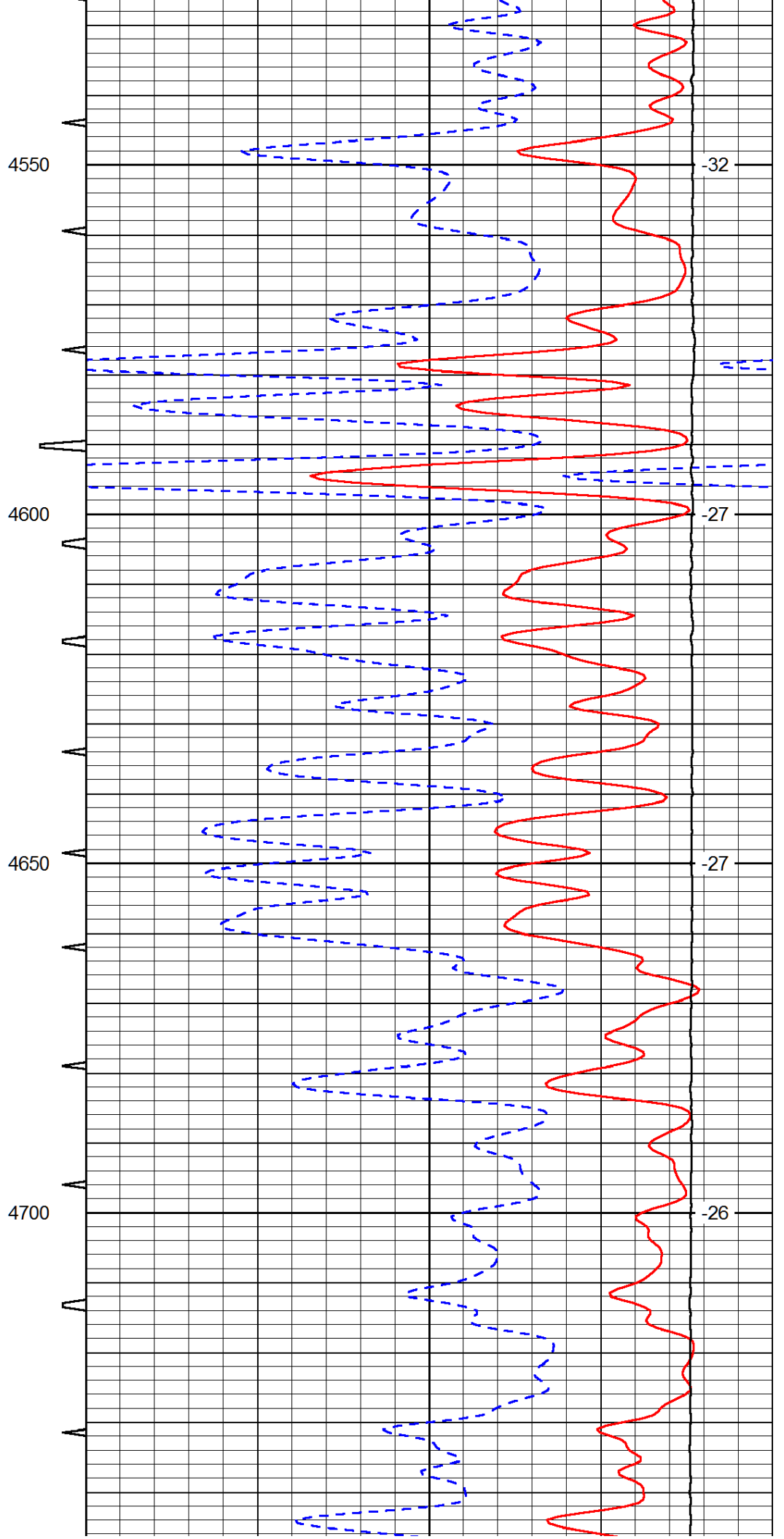
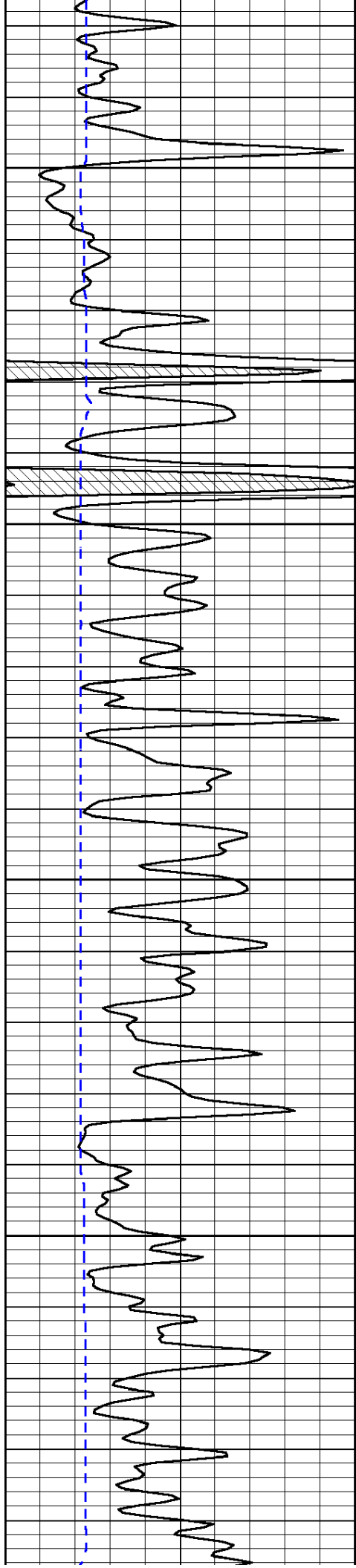


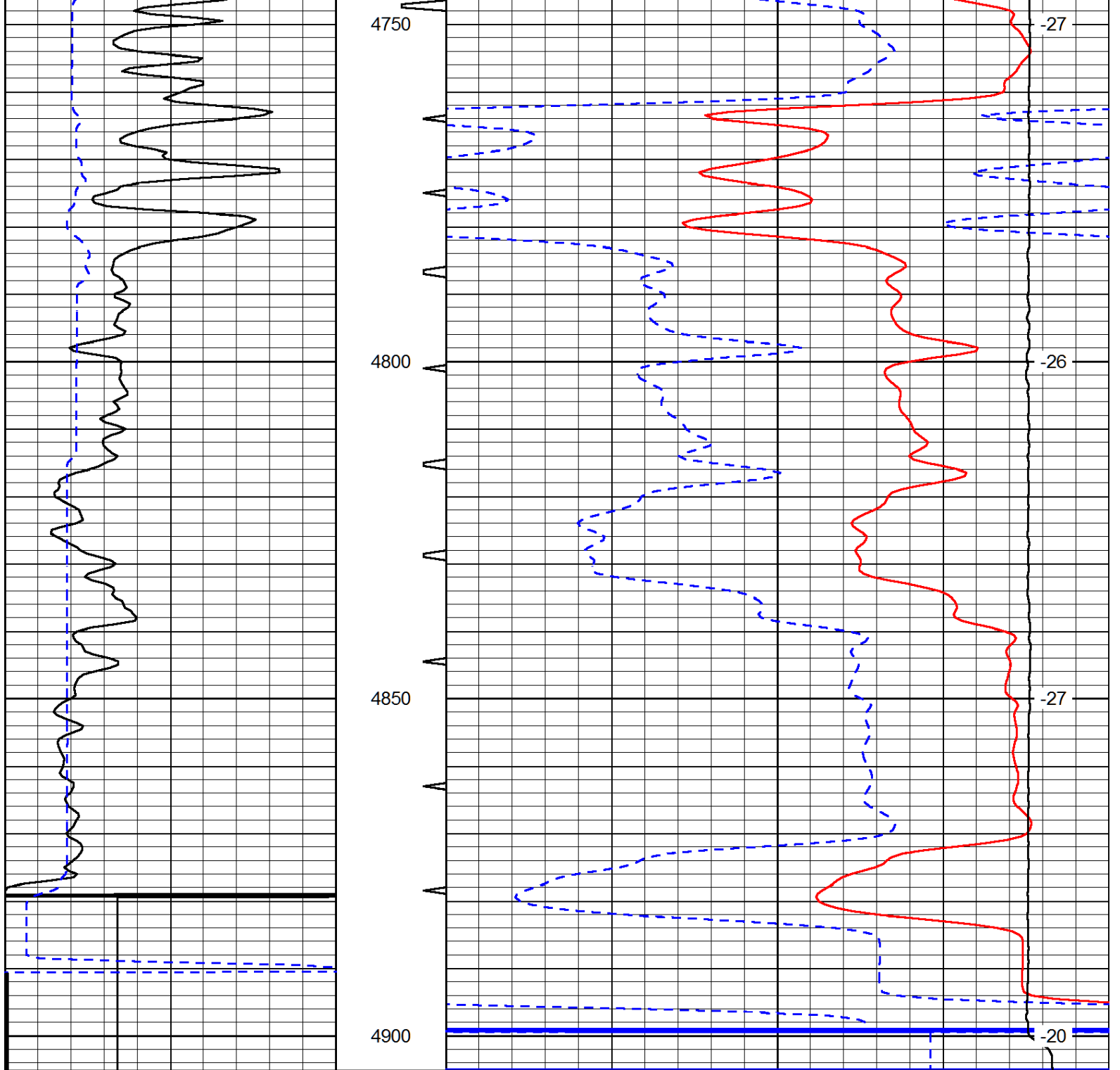












0	Gamma Ray (GAPI)	150	Sonic Int	140	Delta Time (usec/ft) (usec/ft)	40
150	Gamma Ray (GAPI)	300	5 (msec) 0	30	Sonic Porosity (pu)	-10
6	dCAL (in)	16		15000	LTEN (lb) (lb)	0

LSPD  
(ft/min)