



Pioneer Energy Services

# Microresistivity Log

API No. 15-055-22278-00-00

Company: American Warrior, Inc.  
 Well: Neeley # 10-33  
 Field: Congdon  
 County: Finney State: Kansas

Location: 1197' FSL & 339' FEL

Sec: 33 Twp: 23 S Rge: 32 W

Other Services: CNL/CDL DIL/BHCS

Permanent Datum	Ground Level	Elevation 2849	K.B. 2860
Log Measured From	Kelly Bushing	11 Ft. Above Perm. Datum	D.F. 2849
Drilling Measured From	Kelly Bushing		G.L. 2849
Date	02-28-2014		
Run Number	Two		
Depth Driller	4900		
Depth Logger	4900		
Bottom Logged Interval	4899		
Top Log Interval	3800		
Casing Driller	8.625 @ 1755		
Casing Logger	1748		
Bit Size	7.875		
Type Fluid in Hole	Chemical		
Salinity, ppm CL	2200		
Density / Viscosity	9.3   51		
pH / Fluid Loss	9.5   8.4		
Source of Sample	Flowline		
Rm @ Meas. Temp	0.45 @ 55		
Rmf @ Meas. Temp	0.33 @ 55		
Rmc @ Meas. Temp	0.60 @ 55		
Source of Rmf / Rmc	Charts		
Rm @ BHT	0.19 @ 127		
Operating Rig Time	5 Hours		
Max Rec. Temp. F	127		
Equipment Number	91		
Location	Hays		
Recorded By	Y. Ruiz		
Witnessed By	Kevin Timson		

<<< Fold Here >>>

All interpretations are opinions based on inferences from electrical or other measurements and we cannot and do not guarantee the accuracy or correctness of any interpretation, and we shall not, except in the case of gross or willful negligence on our part, be liable or responsible for any loss, costs, damages, or expenses incurred or sustained by anyone resulting from any interpretation made by any of our officers, agents or employees. These interpretations are also subject to our general terms and conditions set out in our current Price Schedule.

Comments

Thank you for using Log-Tech, Inc.  
 (785) 625-3858

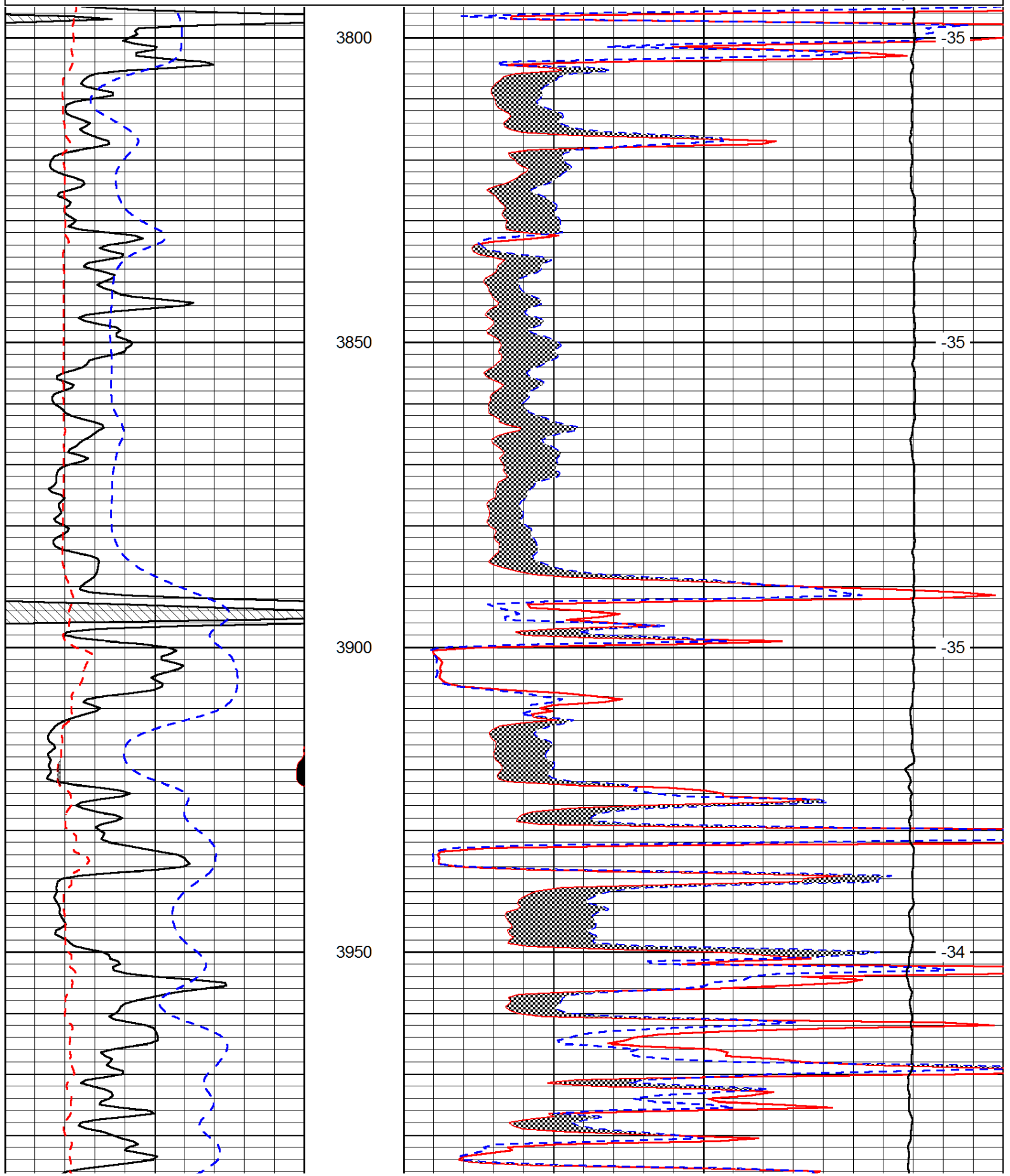
Garden City,  
 1 1/4 North on Jennie Barker,  
 West and North into

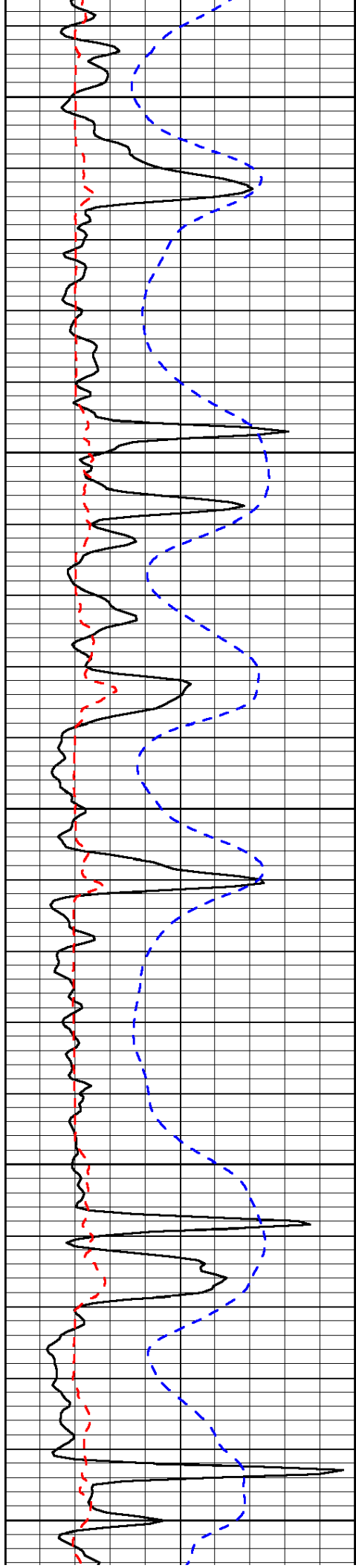
Database File: amerinan\_warrior\_022814hd.db  
 Dataset Pathname: DIL/awst4  
 Presentation Format: micro  
 Dataset Creation: Fri Feb 28 18:32:53 2014  
 Charted by: Depth in Feet scaled 1:240

0	Gamma Ray (GAPI)	150
6	MCAL (in)	16
2.875	Mud Cake (in)	7.875
-200	SP (mV)	0

0	Micro Inverse 1 X 1 (Ohm-m)	40
0	Micro Normal 2" (Ohm-m)	40
10000	Line Weight (lb)	0

LSPD  
(ft/min)





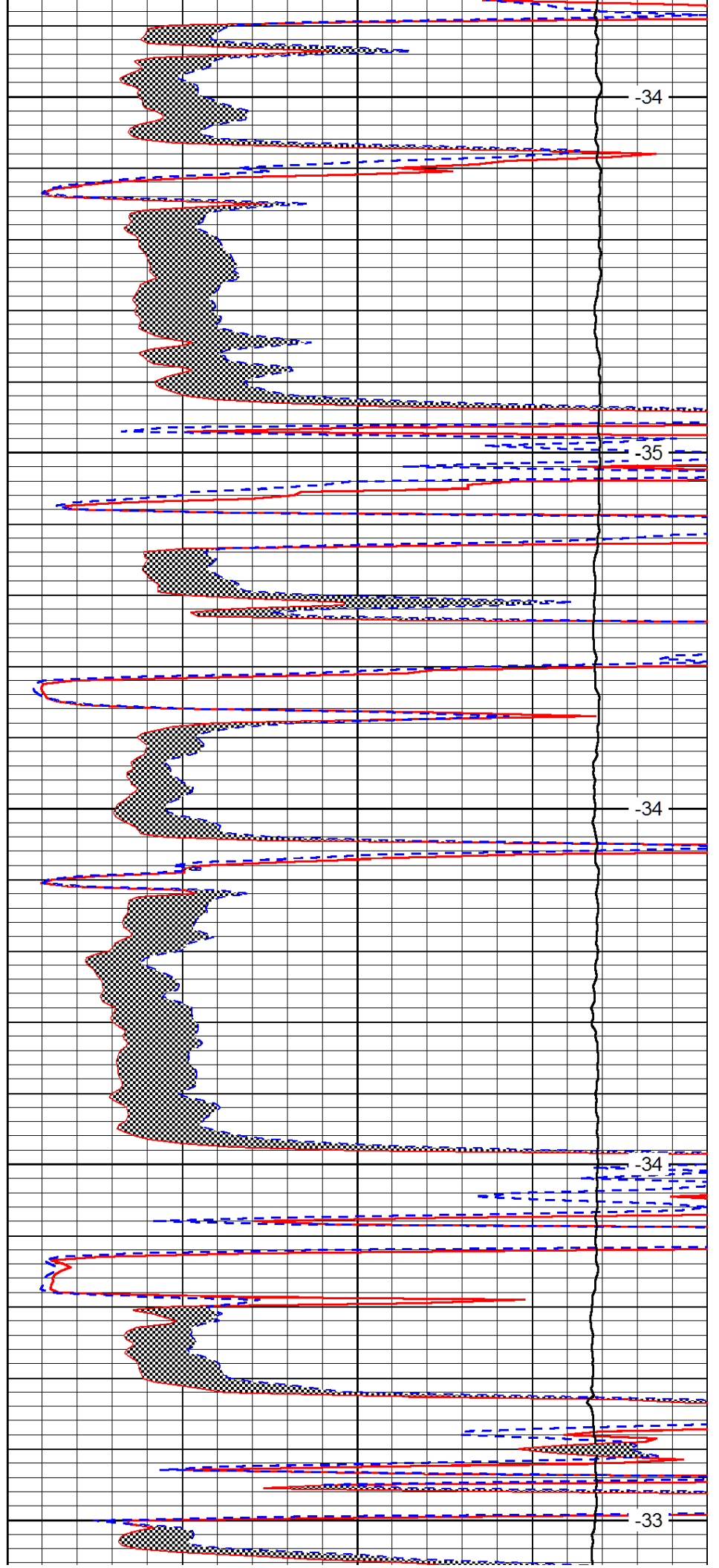
4000

4050

4100

4150

4200



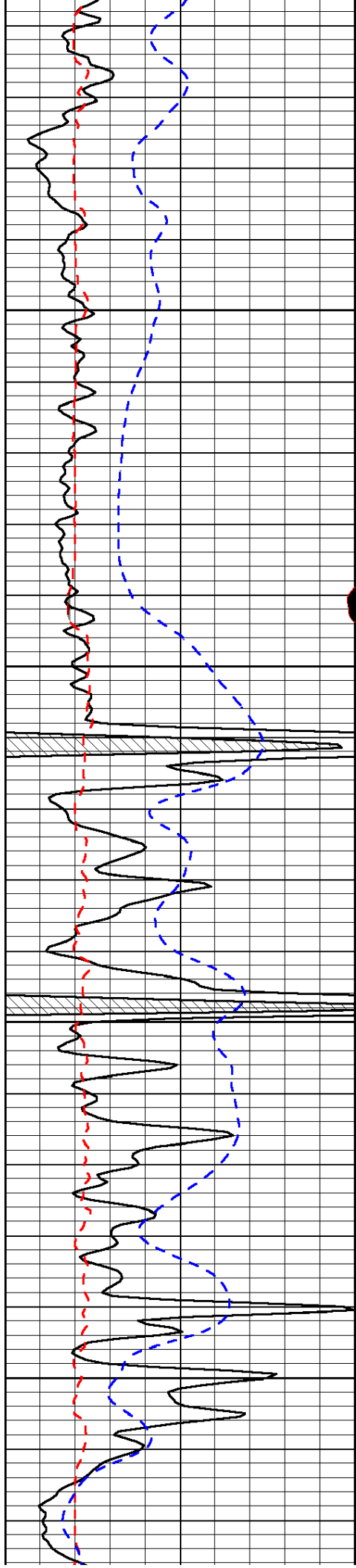
-34

-35

-34

-34

-33

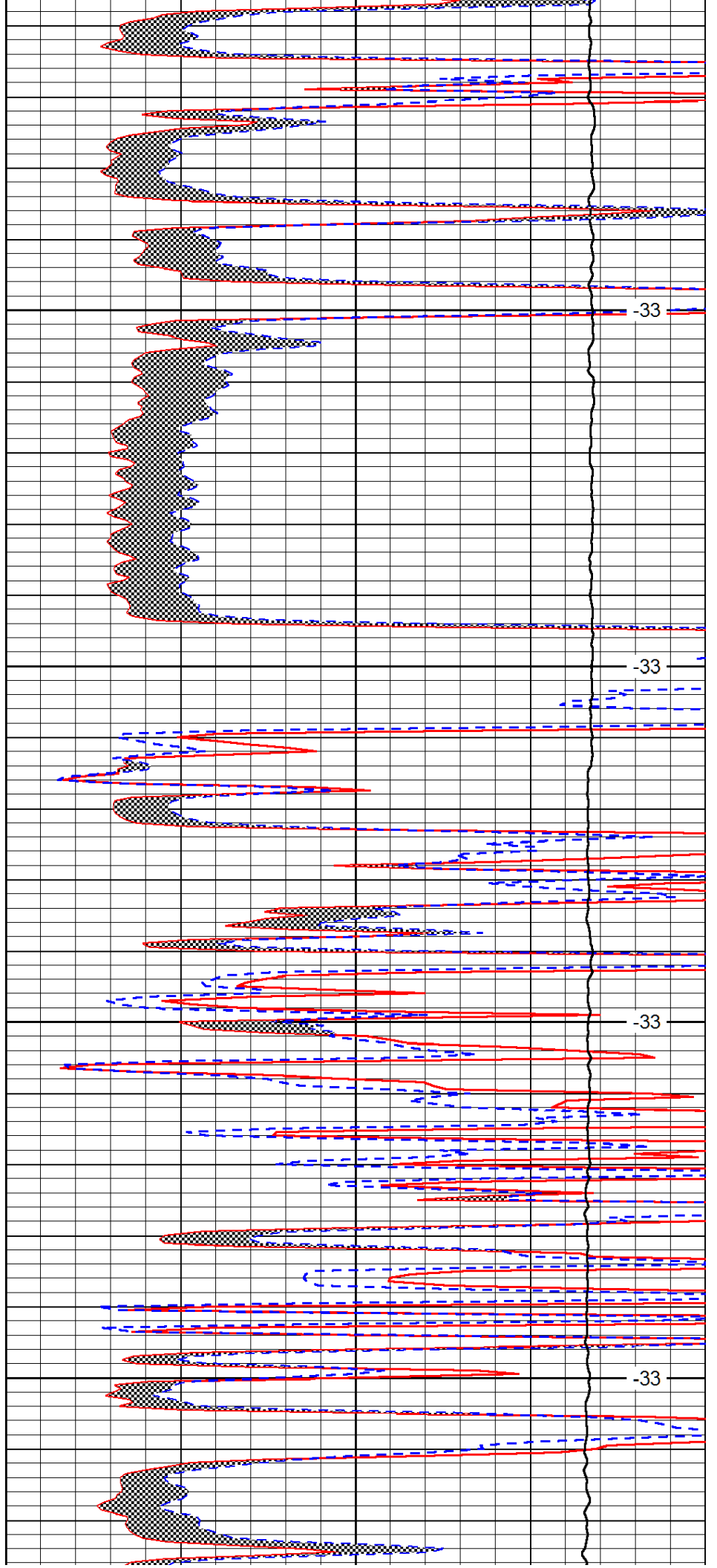


4250

4300

4350

4400

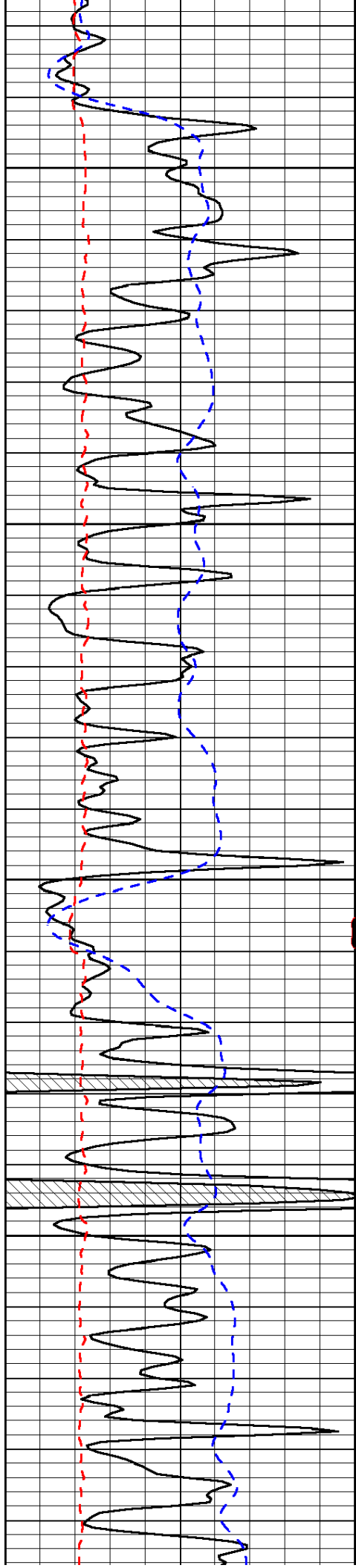


-33

-33

-33

-33

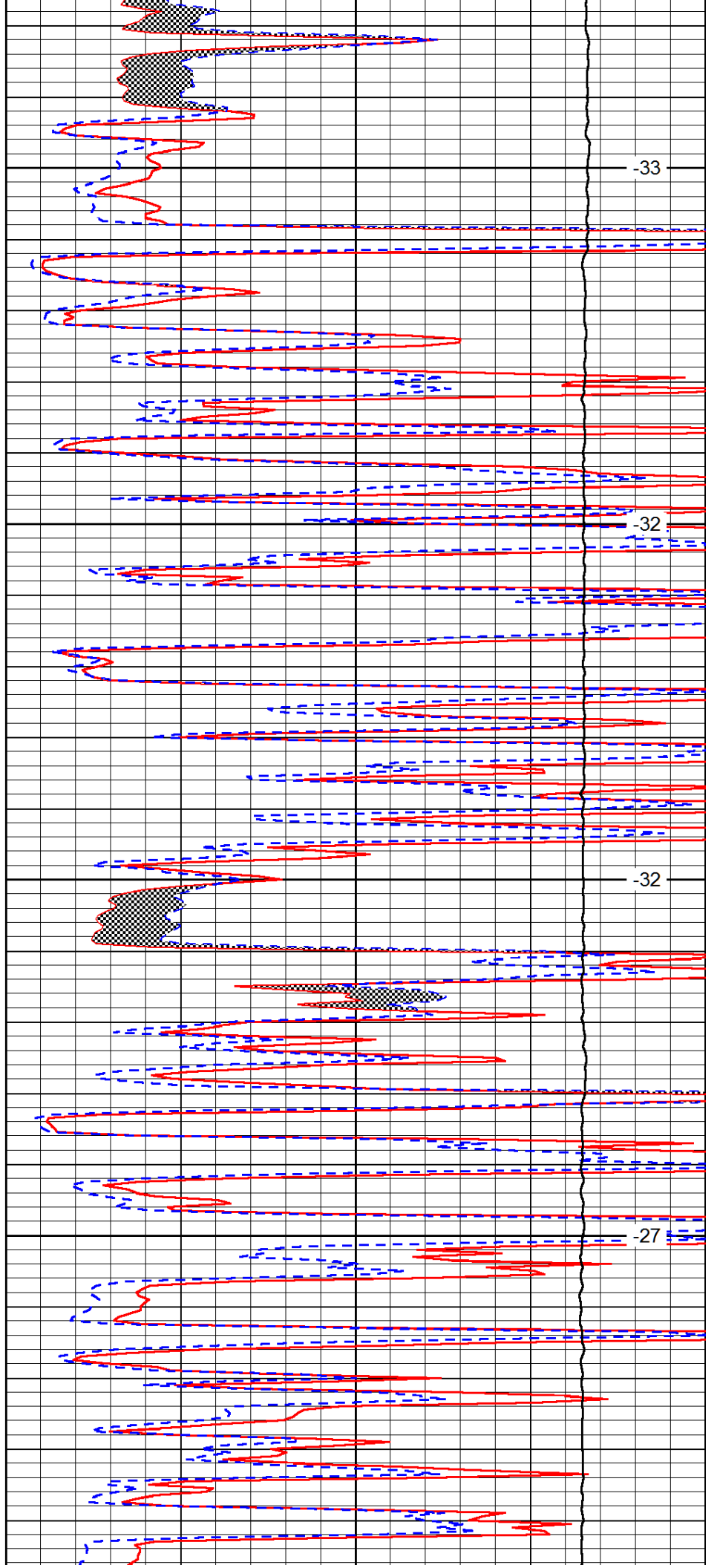


4450

4500

4550

4600

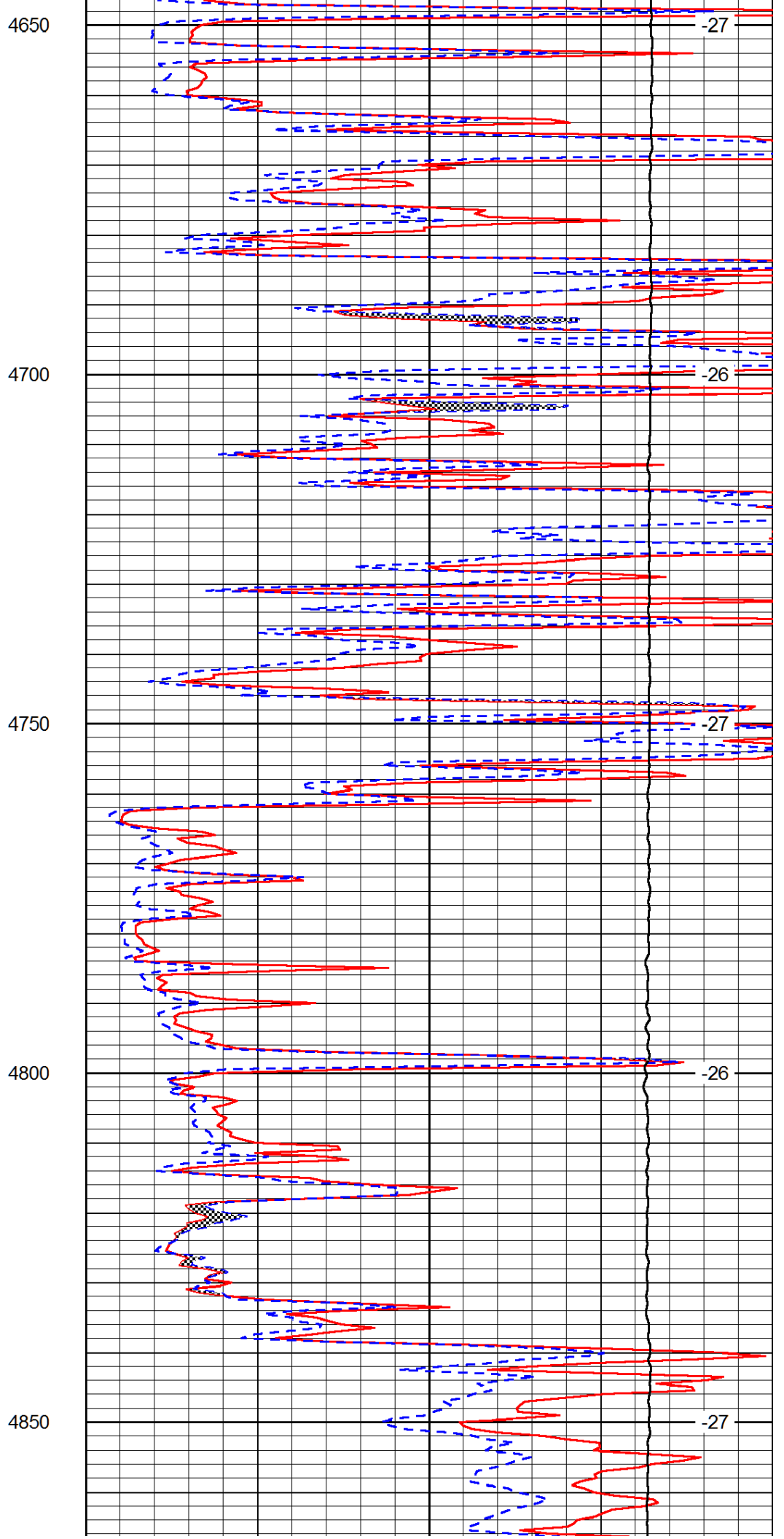
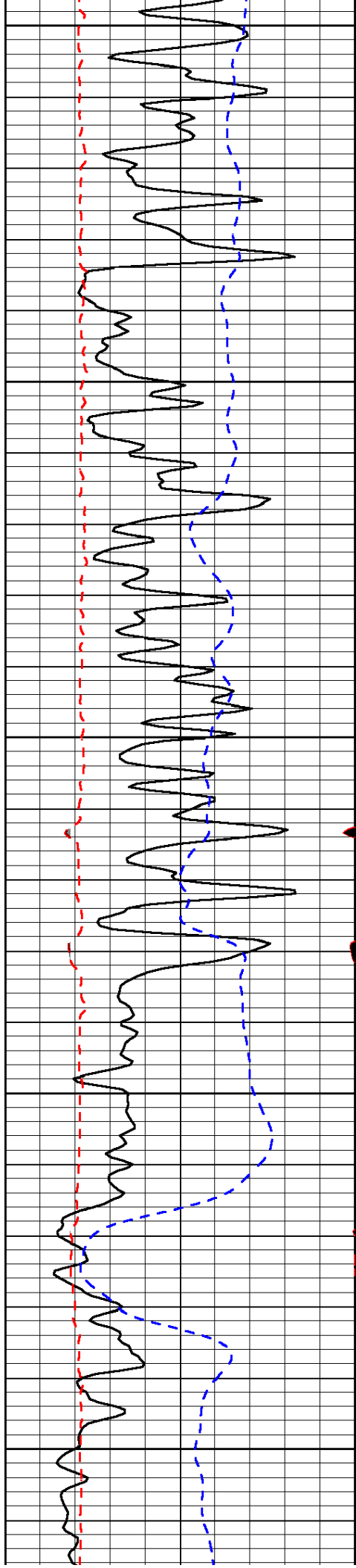


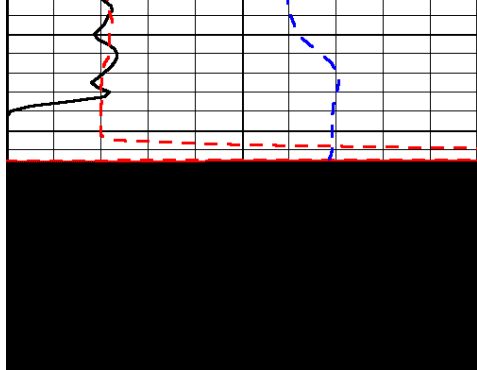
-33

-32

-32

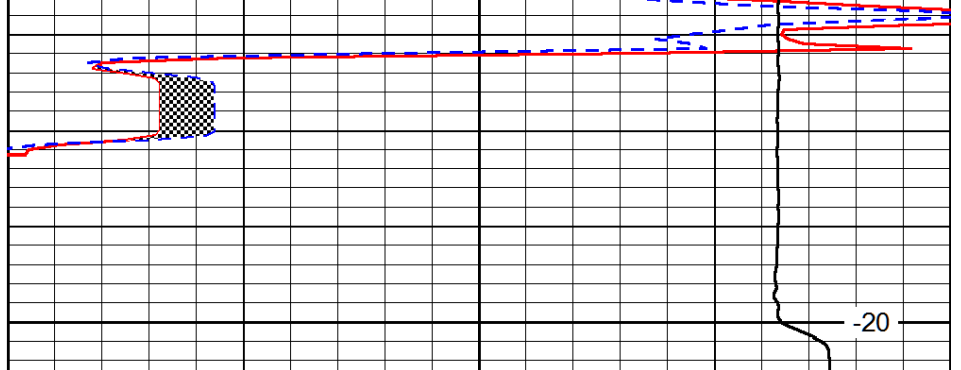
-27





4900

0	Gamma Ray (GAPI)	150
6	MCAL (in)	16
2.875	Mud Cake (in)	7.875
-200	SP (mV)	0



-20

0	Micro Inverse 1 X 1 (Ohm-m)	40
0	Micro Normal 2" (Ohm-m)	40
10000	Line Weight (lb)	0

LSPD  
(ft/min)