



Pioneer Energy Services

Dual Induction Log

API No.	15-055-22278-00-00		
Company	American Warrior, Inc.		
Well	Neeley # 10-33		
Field	Congdon		
County	Finney	State	Kansas
Location	1197' FSL & 339' FEL		
Sec: 33	Twp: 23 S	Rge: 32 W	Other Services CNL/CDL MEL/BHCS
Permanent Datum	Ground Level	Elevation 2849	Elevation
Log Measured From	Kelly Bushing	11 Ft. Above Perm. Datum	K.B. 2860
Drilling Measured From	Kelly Bushing		D.F. 2849
			G.L. 2849

Date	02-28-2014	
Run Number	One	
Depth Driller	4900	
Depth Logger	4900	
Bottom Logged Interval	4899	
Top Log Interval	1700	
Casing Driller	8.625 @ 1755	
Casing Logger	1748	
Bit Size	7.875	
Type Fluid in Hole	Chemical	
Salinity, ppm CL	2200	
Density / Viscosity	9.3	51
pH / Fluid Loss	9.5	8.4
Source of Sample	Flowline	
Rm @ Meas. Temp	0.45	@ 55
Rmf @ Meas. Temp	0.33	@ 55
Rmc @ Meas. Temp	0.60	@ 55
Source of Rmf / Rmc	Charts	
Rm @ BHT	0.19	@ 127
Operating Rig Time	5 Hours	
Max Rec. Temp. F	127	
Equipment Number	91	
Location	Hays	
Recorded By	Y. Ruiz	
Witnessed By	Kevin Timson	

<<< Fold Here >>>

All interpretations are opinions based on inferences from electrical or other measurements and we cannot and do not guarantee the accuracy or correctness of any interpretation, and we shall not, except in the case of gross or willful negligence on our part, be liable or responsible for any loss, costs, damages, or expenses incurred or sustained by anyone resulting from any interpretation made by any of our officers, agents or employees. These interpretations are also subject to our general terms and conditions set out in our current Price Schedule.

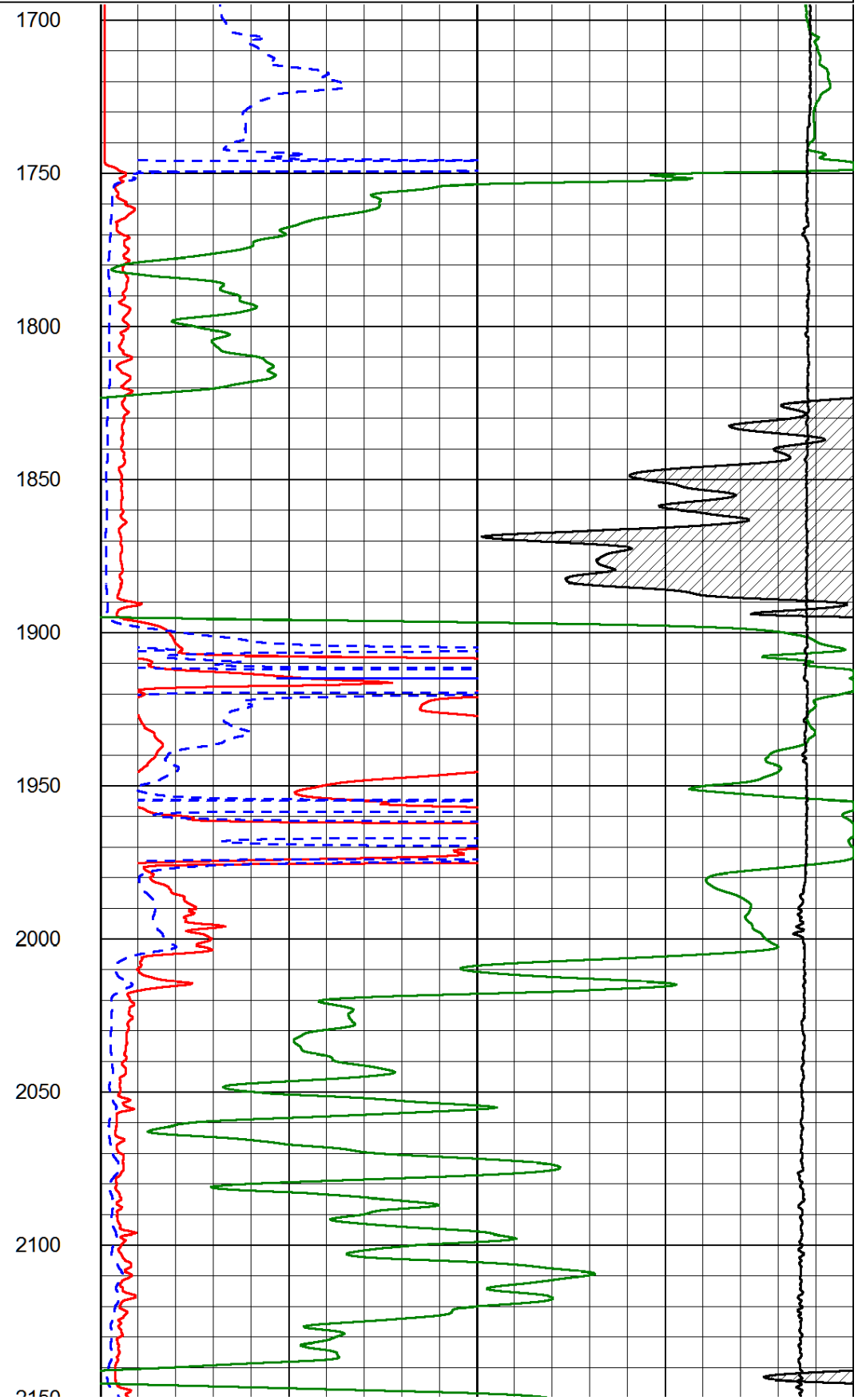
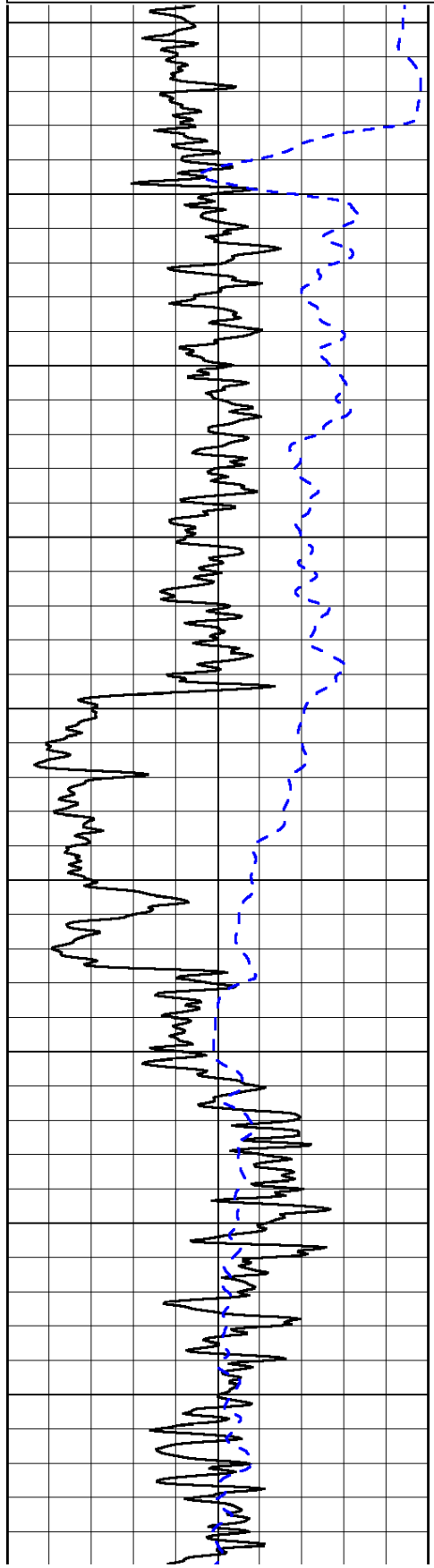
Comments

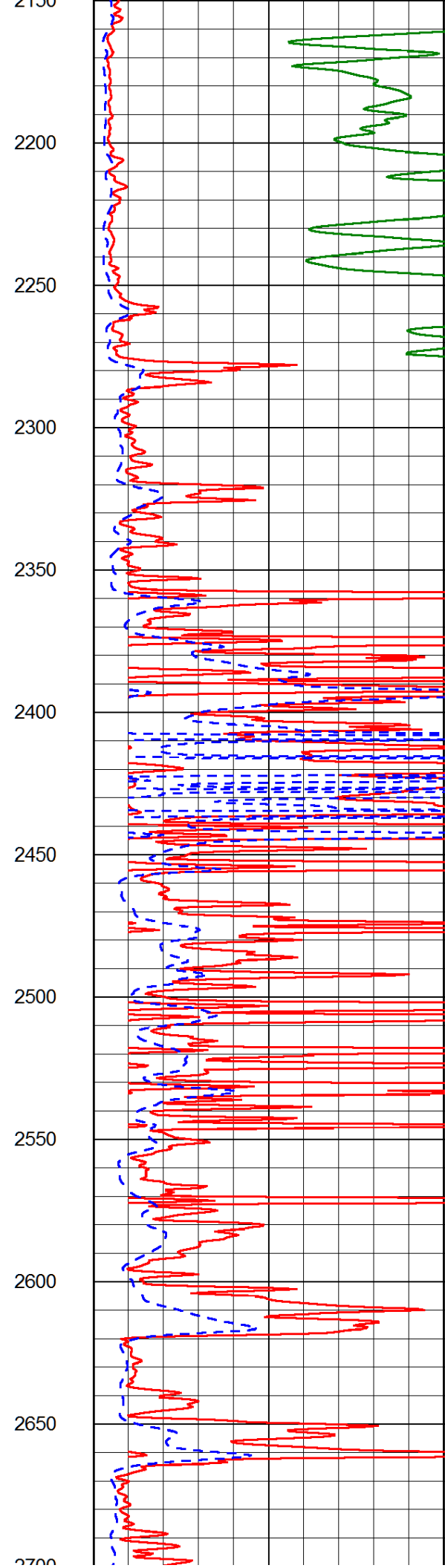
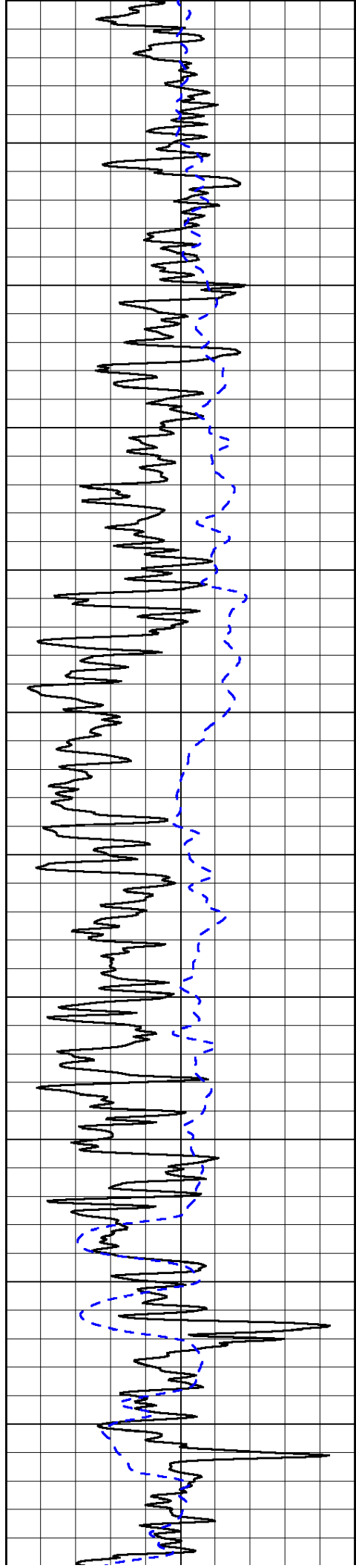
Thank you for using Log-Tech, Inc.
 (785) 625-3858
 Garden City,
 1 1/4 North on Jennie Barker,
 West and North into

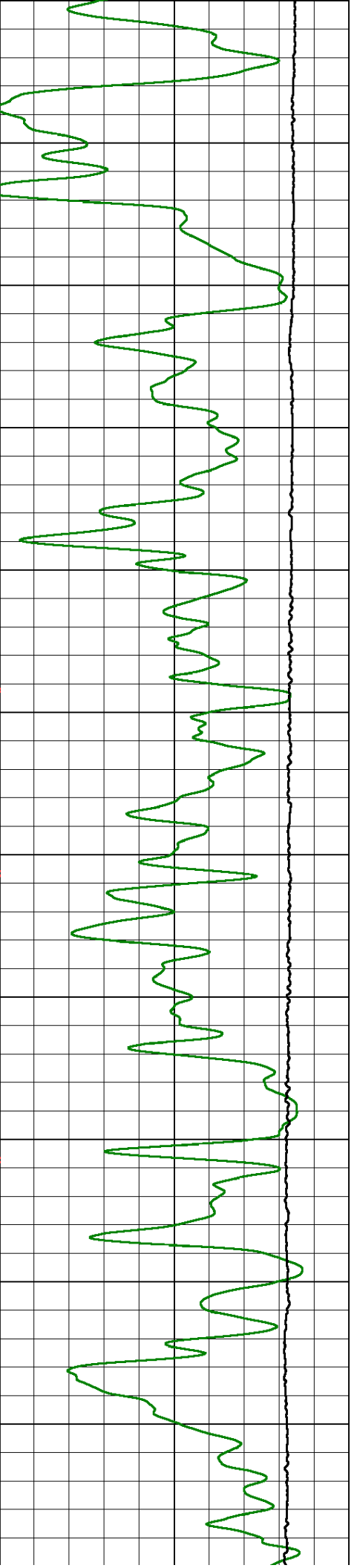
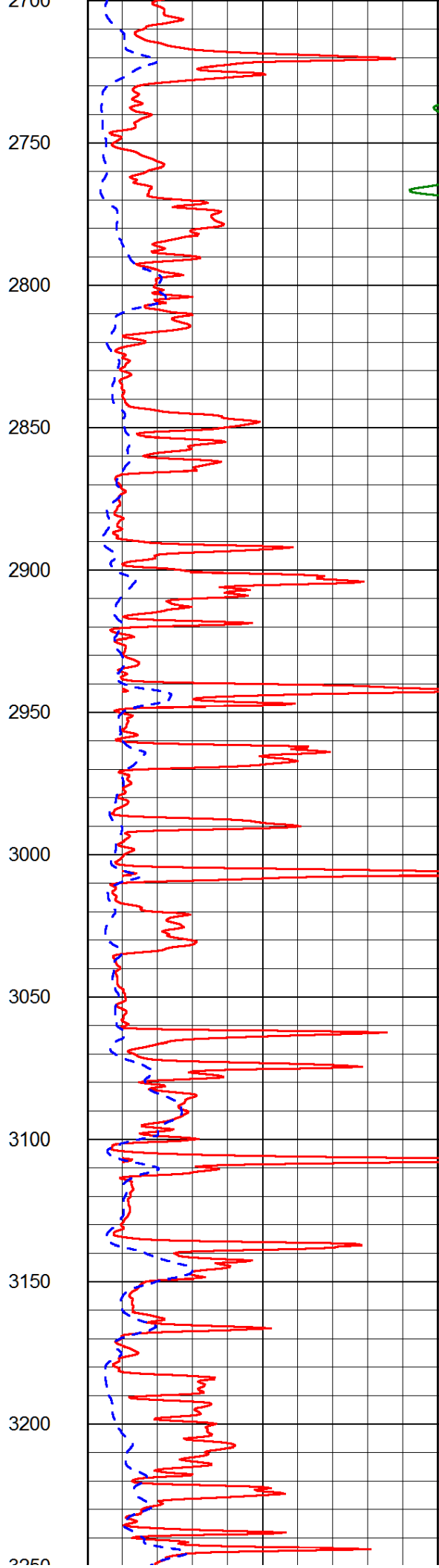
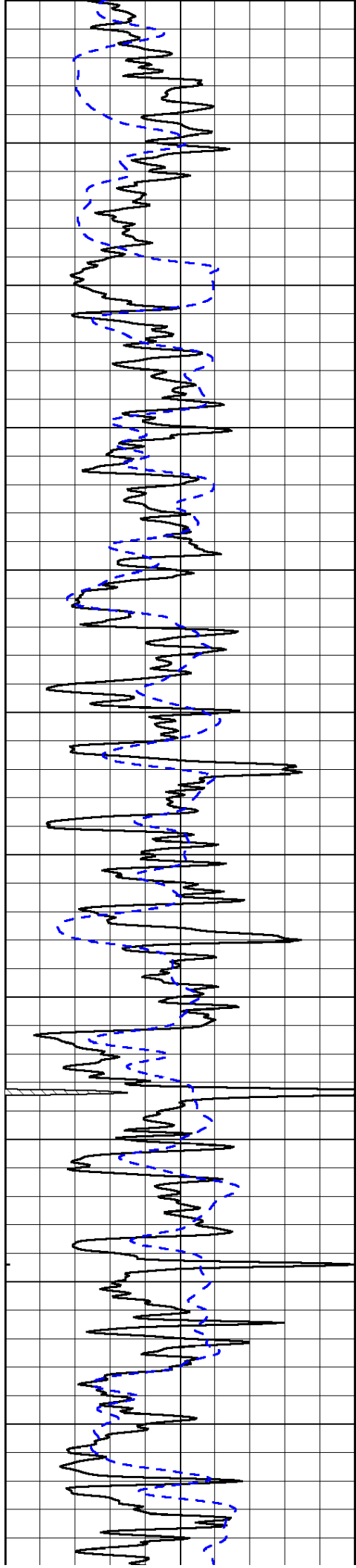
Database File: amerinan_warrior_022814hd.db
 Dataset Pathname: DIL/awst4
 Presentation Format: dil2in
 Dataset Creation: Fri Feb 28 18:32:53 2014
 Charted by: Depth in Feet scaled 1:600

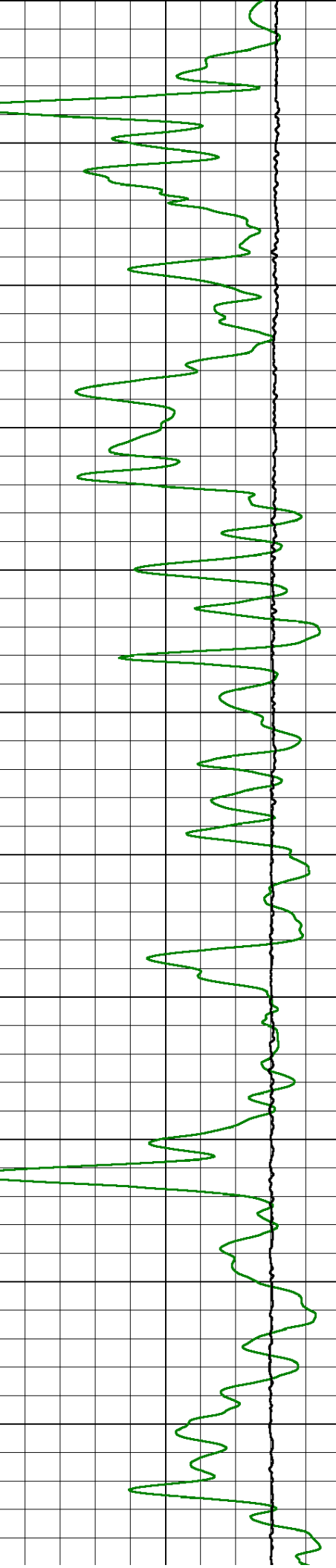
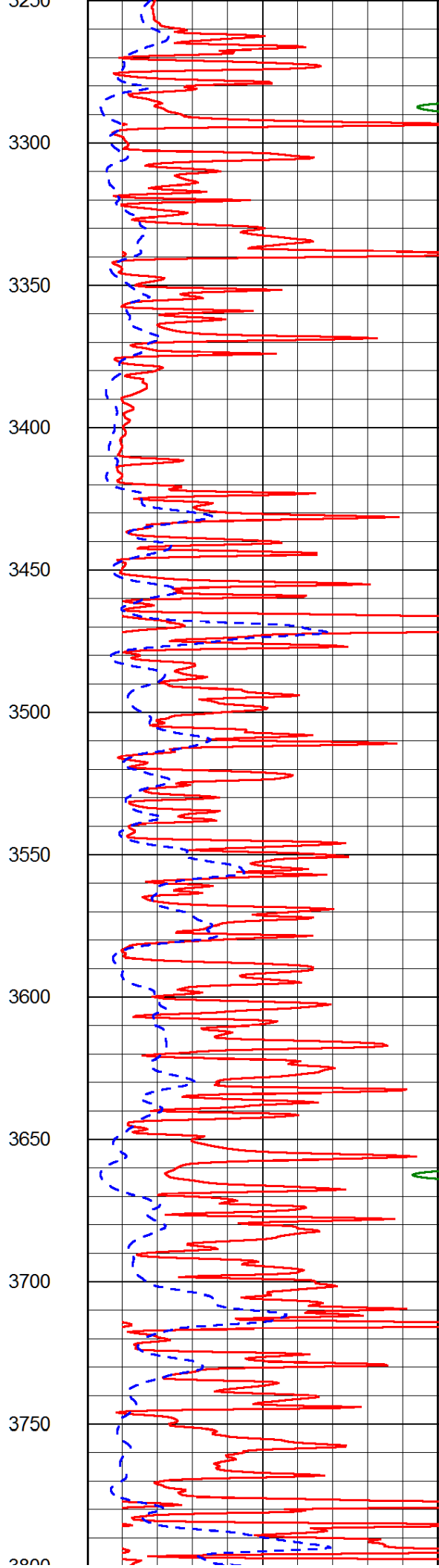
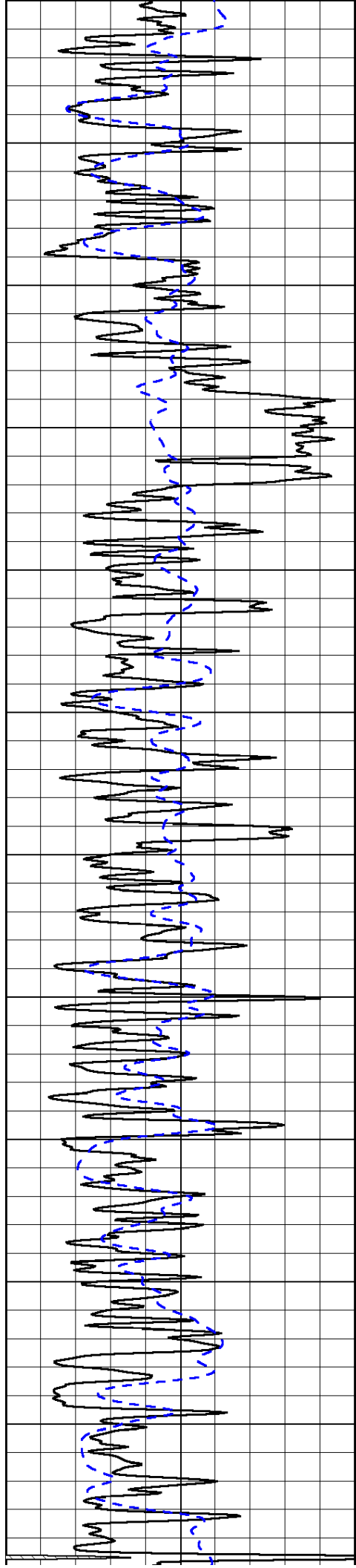
0	Gamma Ray (GAPI)	150
-200	SP (mV)	0

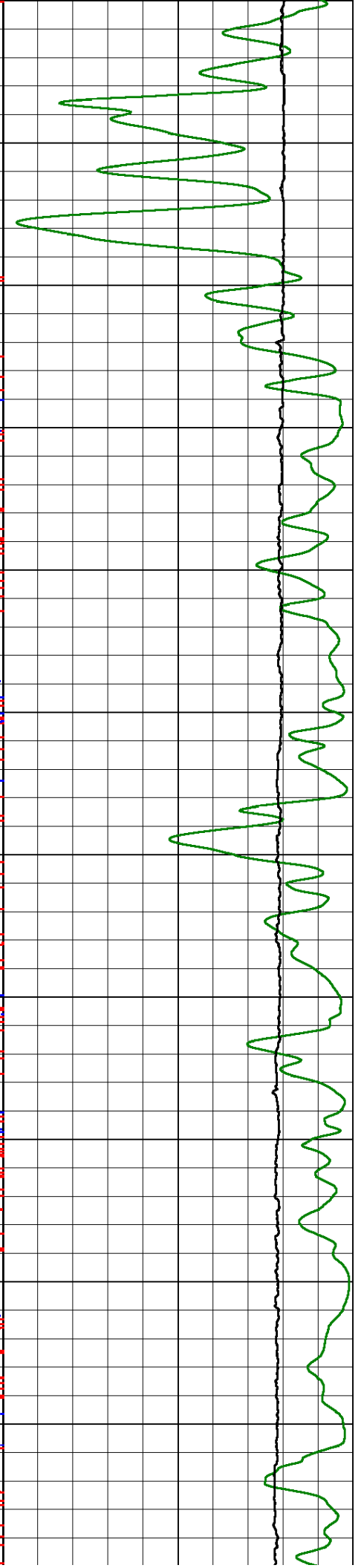
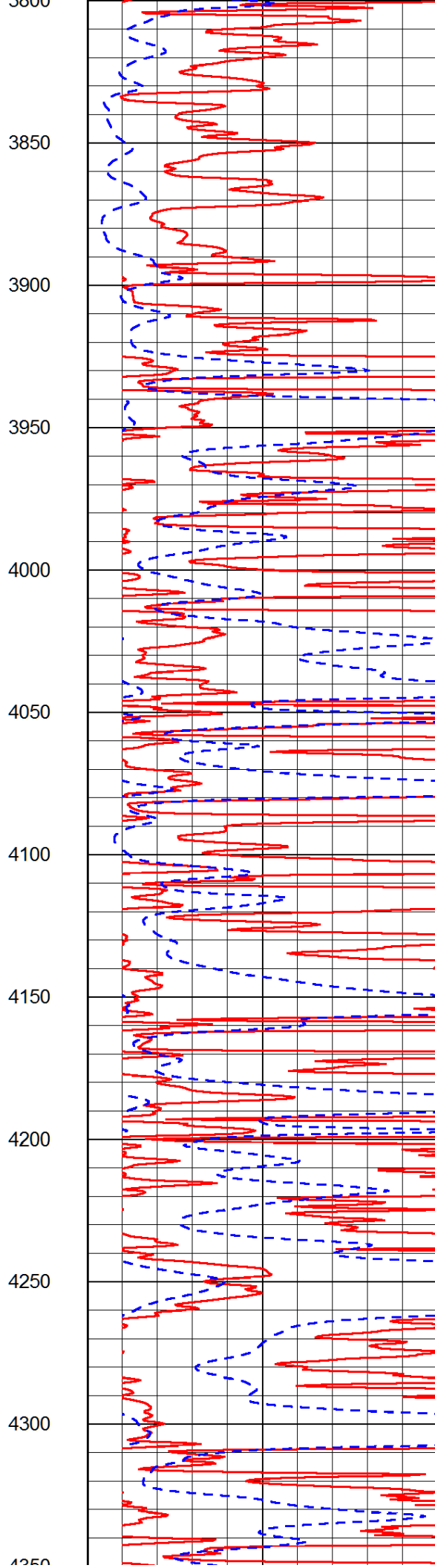
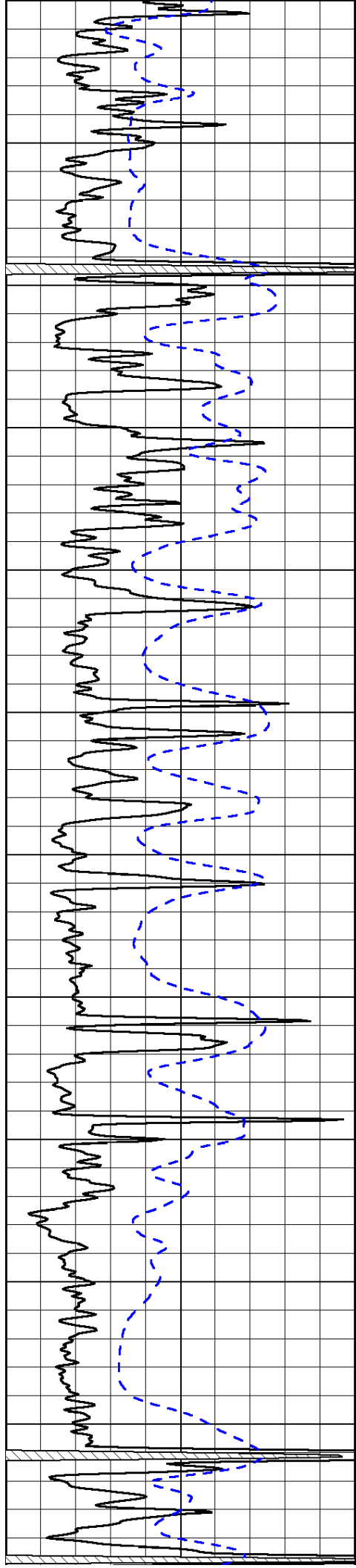
0	Shallow Resistivity (Ohm-m)	50
0	Deep Resistivity (Ohm-m)	50
1000	Conductivity (Ohm-m)	0
15000	Line Tension (lb)	0
	Shallow Resistivity (Ohm-m)	50
	Deep Resistivity (Ohm-m)	50

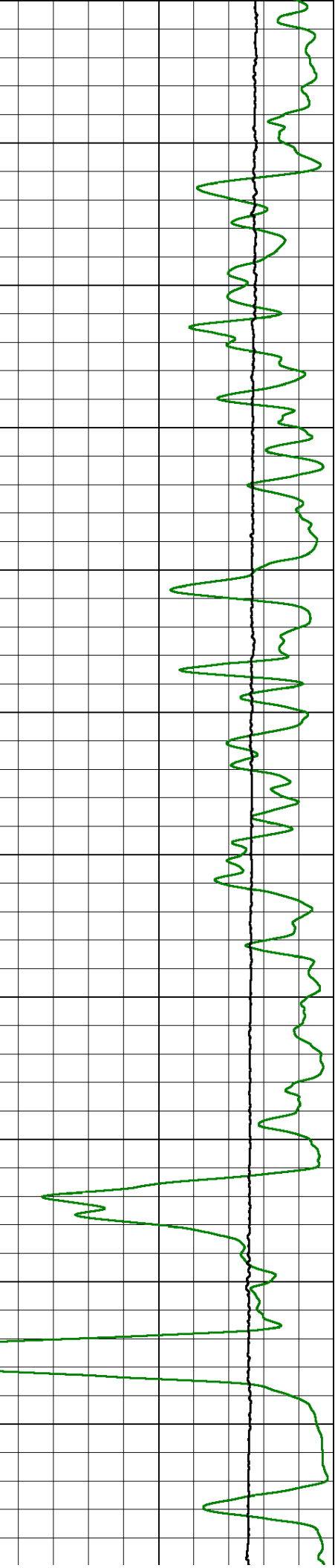
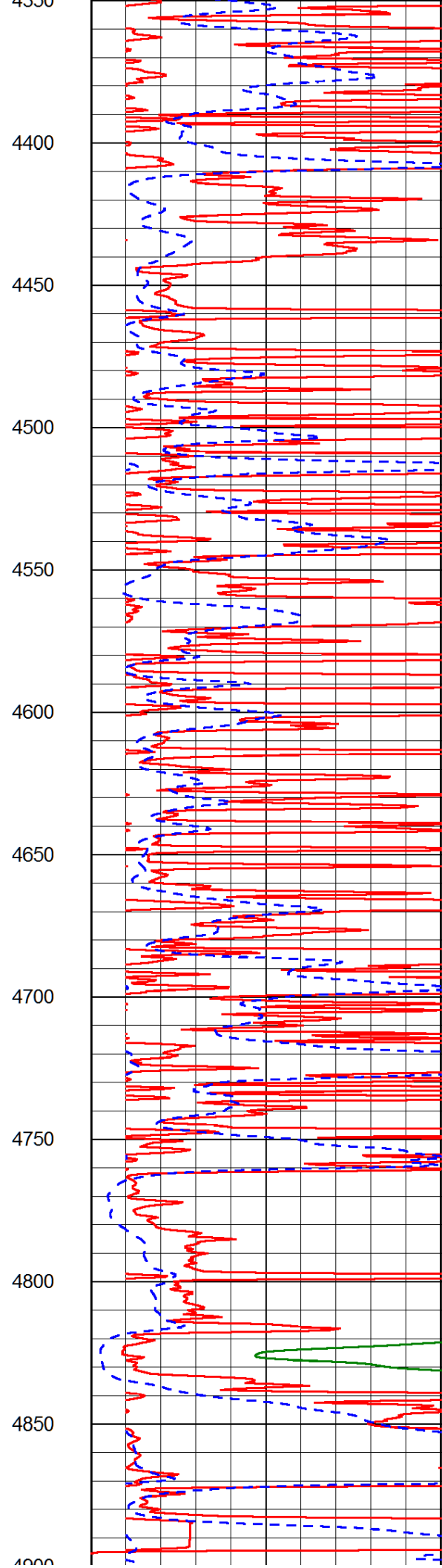
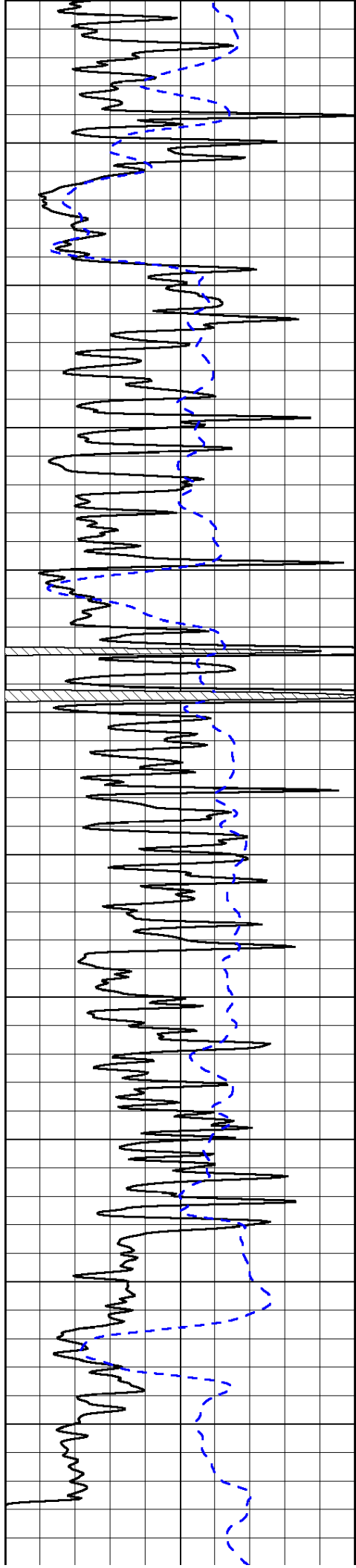








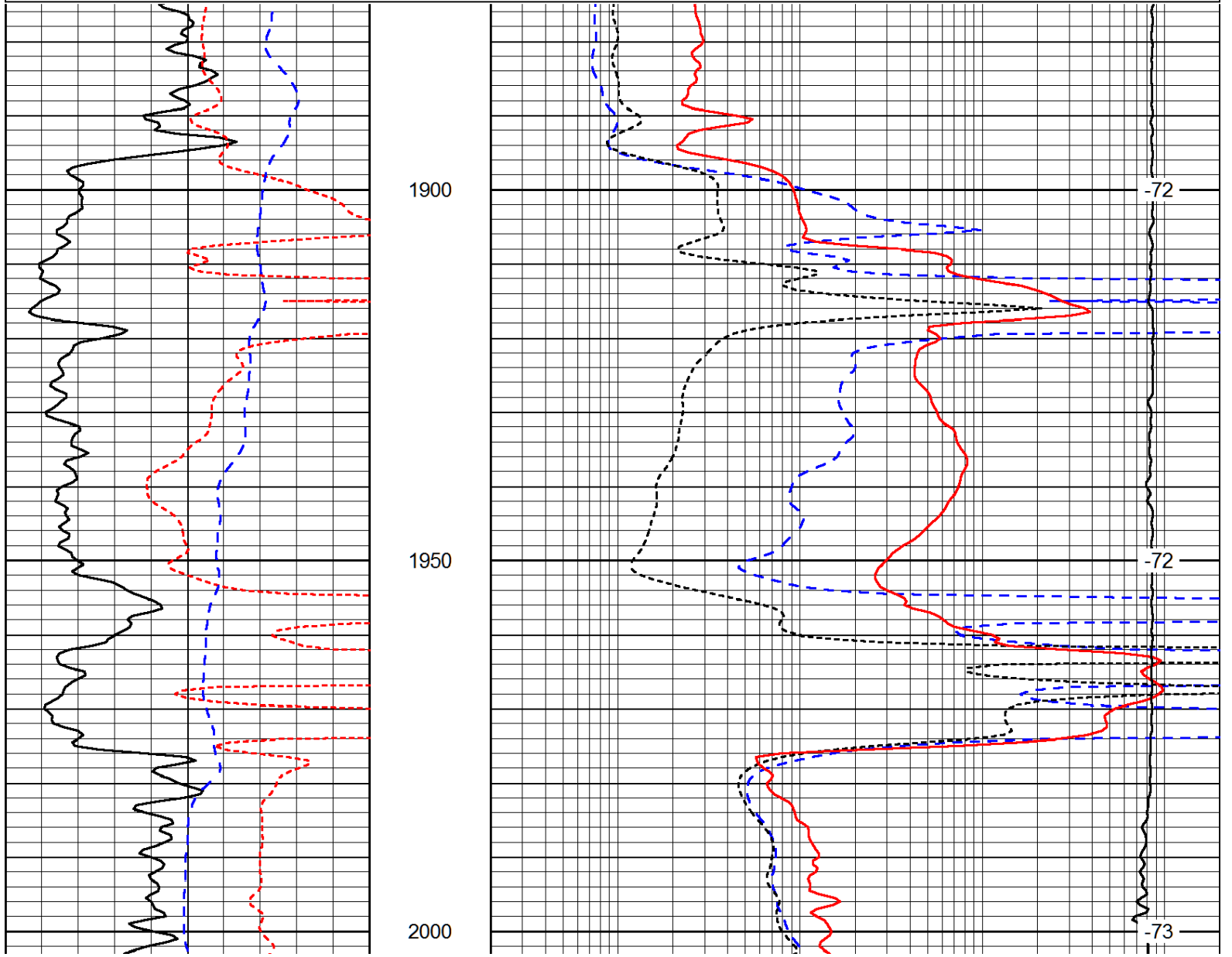


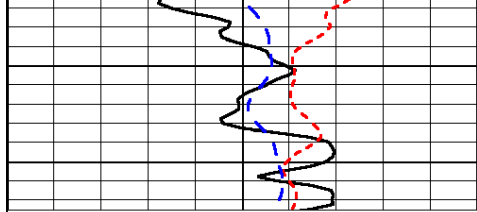


0	Gamma Ray (GAPI)	150	4900	0	Shallow Resistivity (Ohm-m)	50
-200	SP (mV)	0		0	Deep Resistivity (Ohm-m)	50
				1000	Conductivity (Ohm-m)	0
				15000	Line Tension (lb)	0
					Shallow Resistivity	
				50	(Ohm-m)	500
				50	Deep Resistivity (Ohm-m)	500

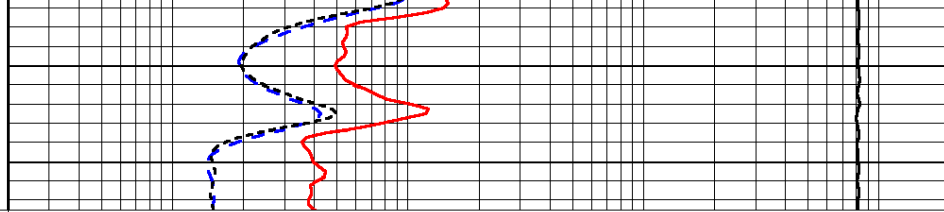
Database File: amerinan_warrior_022814hd.db
 Dataset Pathname: DIL/awst4
 Presentation Format: dil
 Dataset Creation: Fri Feb 28 18:32:53 2014
 Charted by: Depth in Feet scaled 1:240

0	Gamma Ray (GAPI)	150	0.2	Deep Resistivity (Ohm-m)	2000
-160	RXO/RT	40	0.2	Medium Resistivity (Ohm-m)	2000
-200	SP (mV)	0	0.2	Shallow Resistivity (Ohm-m)	2000
			10000	Line Tension (lb)	0
					LSPD (ft/min)





0	Gamma Ray (GAPI)	150
-160	RXO/RT	40
-200	SP (mV)	0



0.2	Deep Resistivity (Ohm-m)	2000
0.2	Medium Resistivity (Ohm-m)	2000
0.2	Shallow Resistivity (Ohm-m)	2000
10000	Line Tension (lb)	0

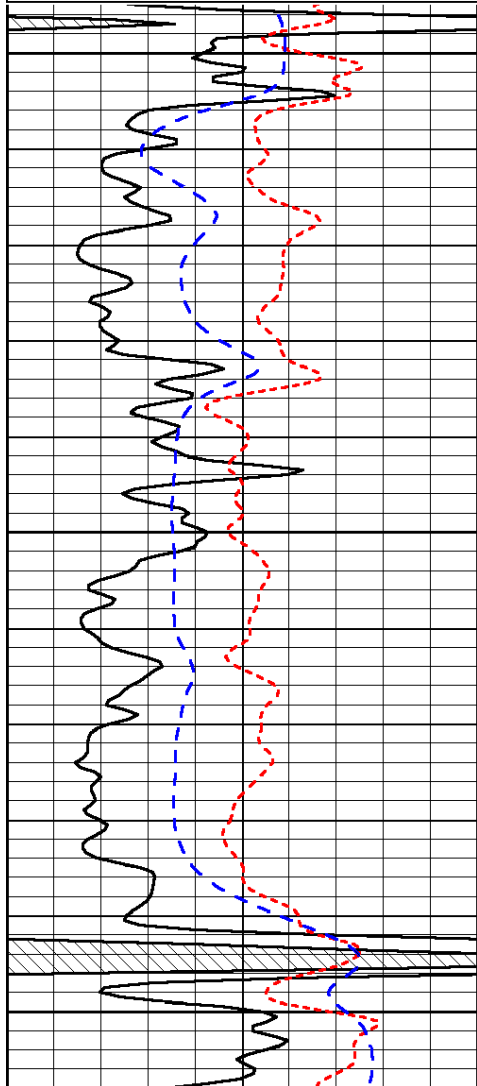
LSPD
(ft/min)

Database File: amerinan_warrior_022814hd.db
 Dataset Pathname: DIL/awst4
 Presentation Format: dil
 Dataset Creation: Fri Feb 28 18:32:53 2014
 Charted by: Depth in Feet scaled 1:240

0	Gamma Ray (GAPI)	150
-160	RXO/RT	40
-200	SP (mV)	0

0.2	Deep Resistivity (Ohm-m)	2000
0.2	Medium Resistivity (Ohm-m)	2000
0.2	Shallow Resistivity (Ohm-m)	2000
10000	Line Tension (lb)	0

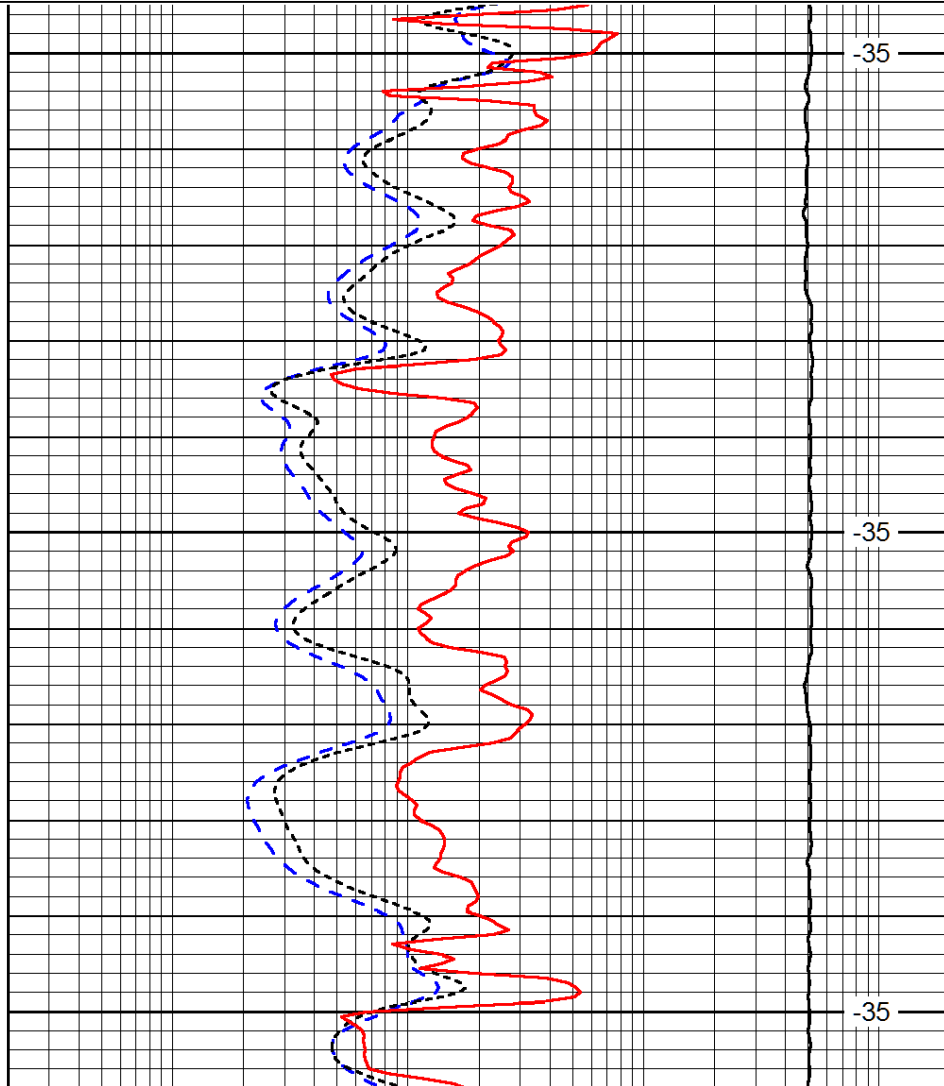
LSPD
(ft/min)



3800

3850

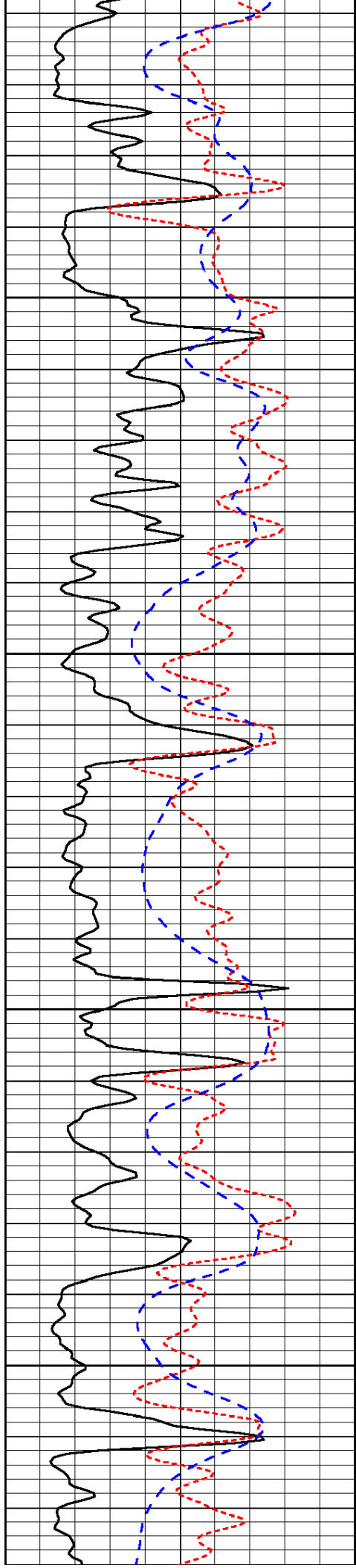
3900



-35

-35

-35

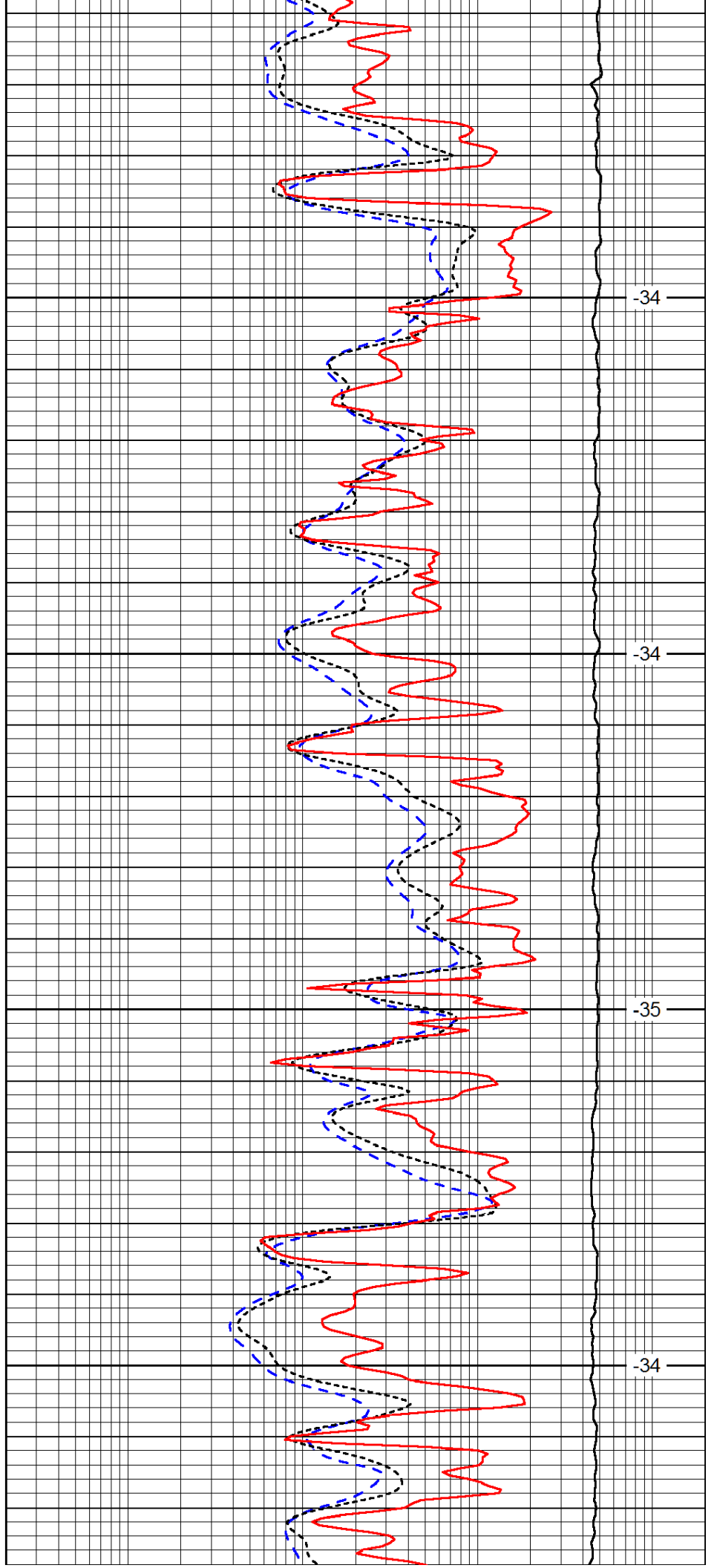


3950

4000

4050

4100

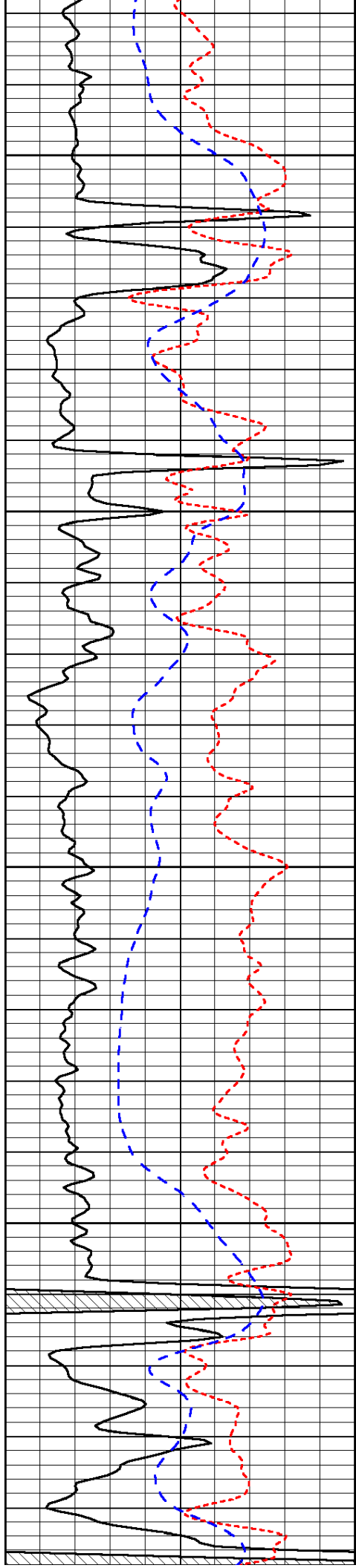


-34

-34

-35

-34

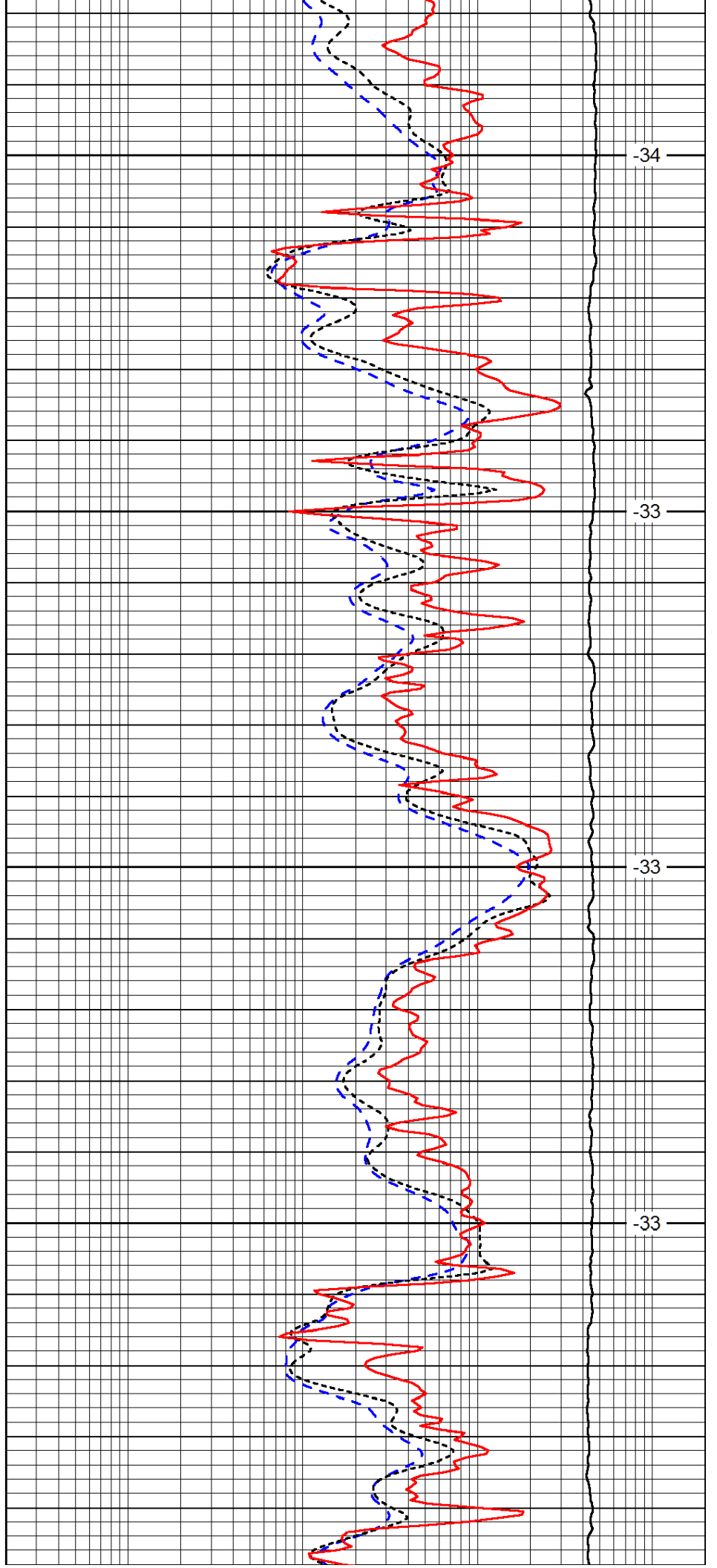


4150

4200

4250

4300

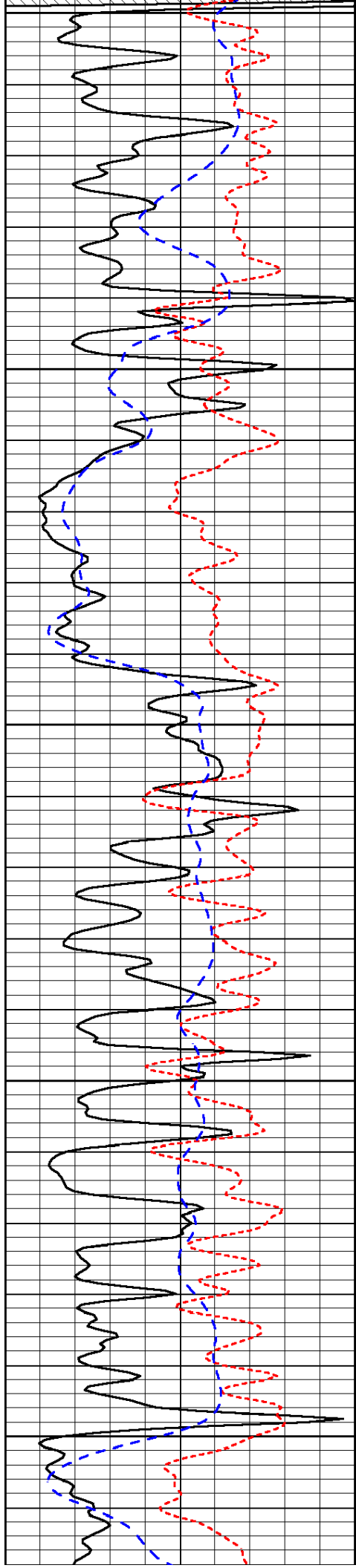


-34

-33

-33

-33



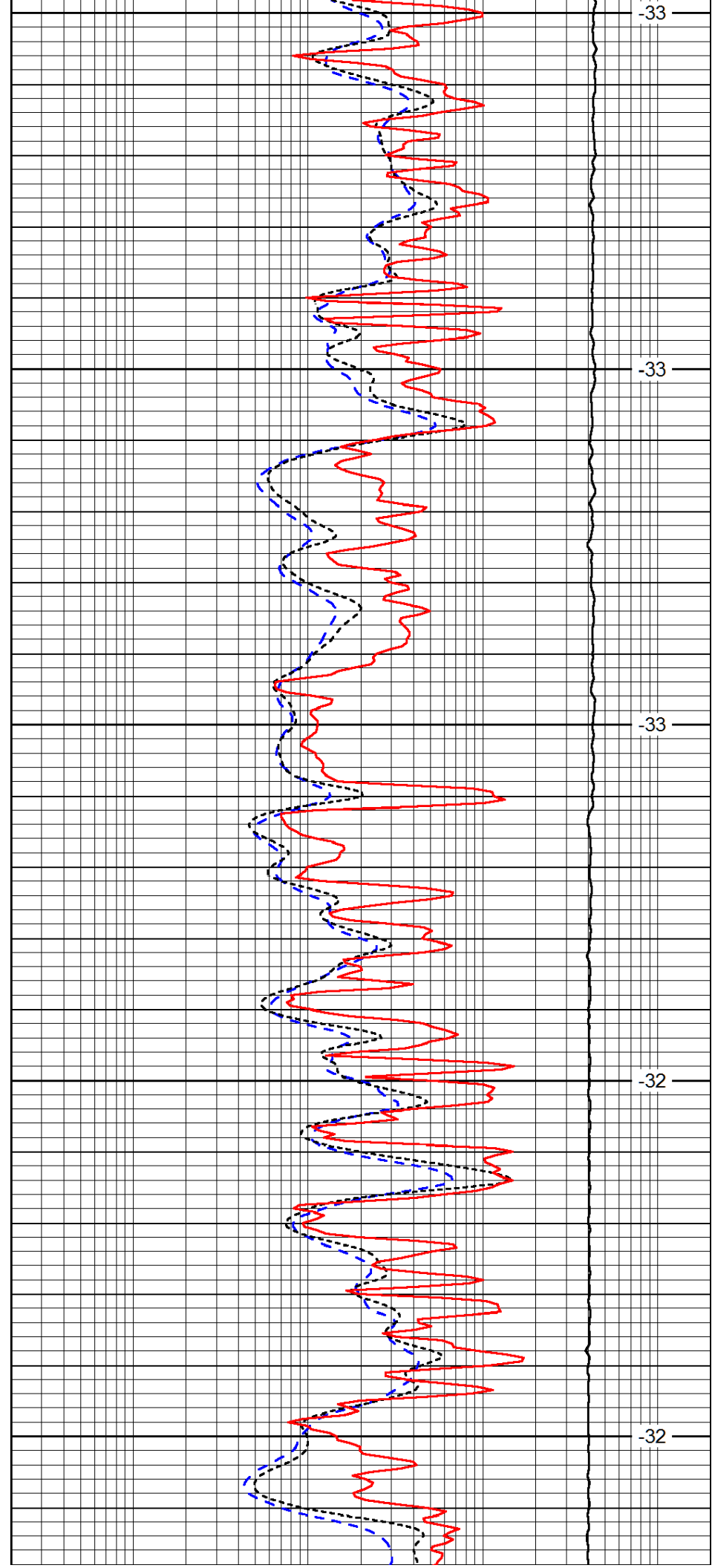
4350

4400

4450

4500

4550



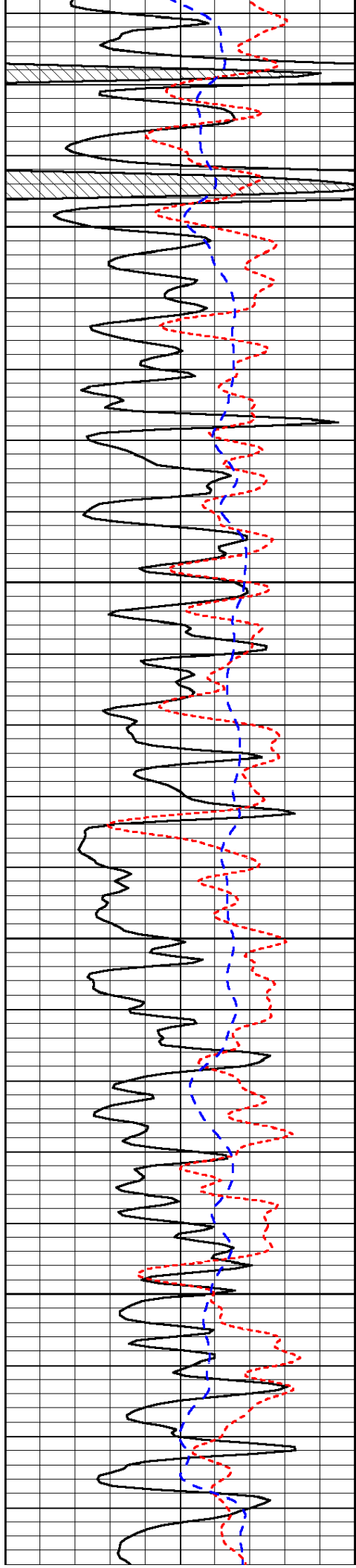
-33

-33

-33

-32

-32

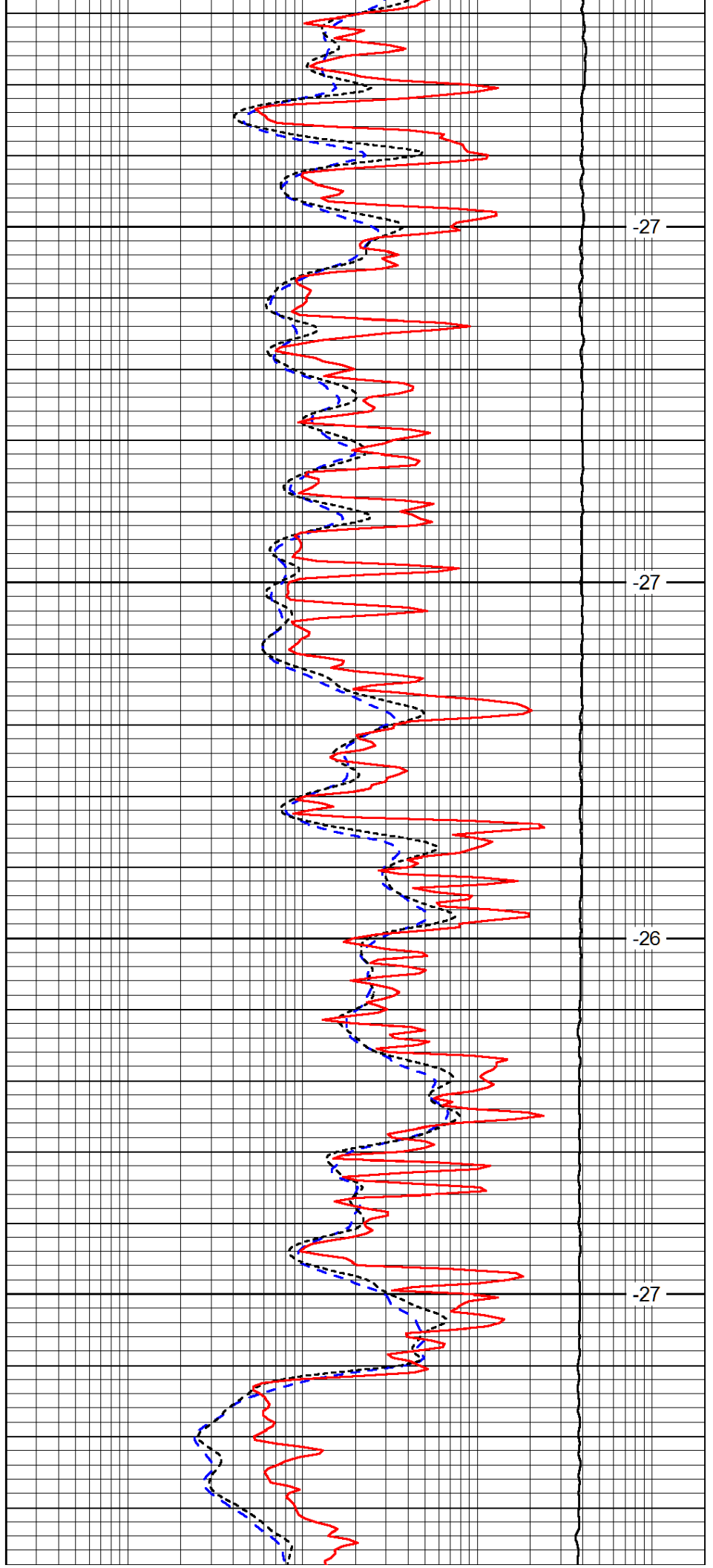


4600

4650

4700

4750

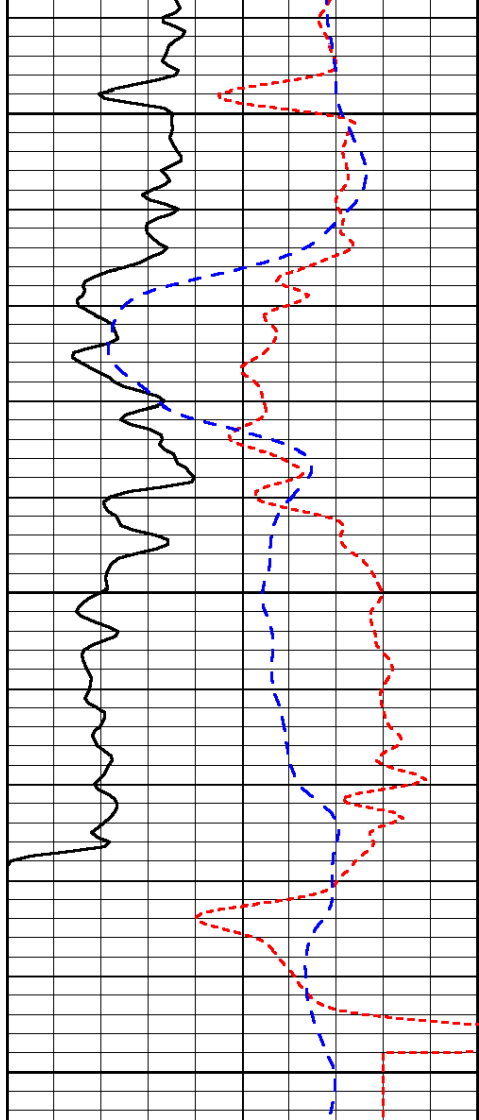


-27

-27

-26

-27

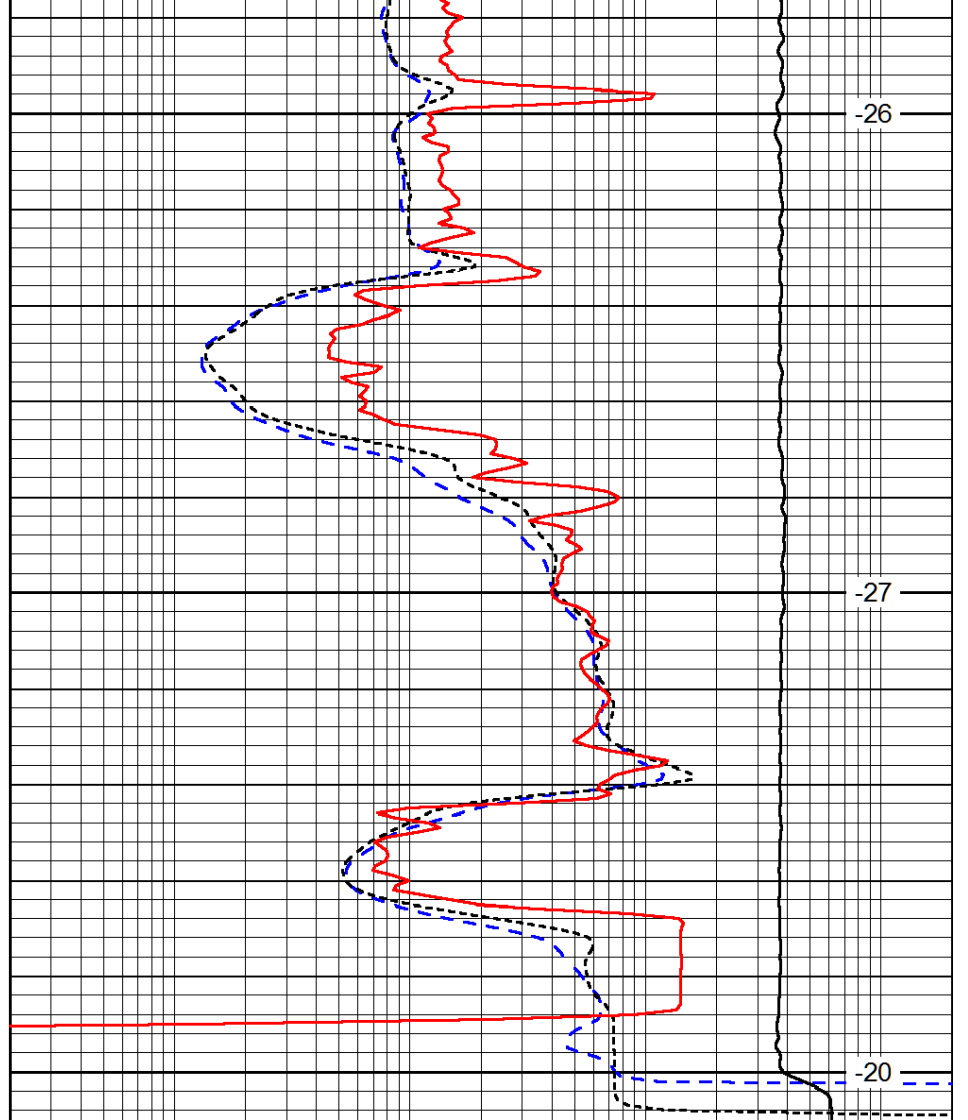


0	Gamma Ray (GAPI)	150
-160	RXO/RT	40
-200	SP (mV)	0

4800

4850

4900



-26

-27

-20

0.2	Deep Resistivity (Ohm-m)	2000
0.2	Medium Resistivity (Ohm-m)	2000
0.2	Shallow Resistivity (Ohm-m)	2000
10000	Line Tension (lb)	0

LSPD
(ft/min)