



Pioneer Energy Services

Microresistivity Log

15-053-21,296-00-00

API No.

Company **C&K Oil Company**

Well **Barclay #4**

Field **Stoltenberg**

County **Ellsworth** State

Kansas

Location

450' FSL & 1250' FWL

Other Services
CNL/CDL
DIL

Sec: 6

Twp: 16S

Rge: 10W

Elevation

K.B. 1871

D.F. 1864

G.L. 1864

Permanent Datum

Ground Level

Elevation 1864

Log Measured From

Kelly Bushing

7 Ft. Above Perm. Datum

Drilling Measured From

Kelly Bushing

Date

1/26/2014

Run Number

Two

Depth Driller

3430

Depth Logger

3431

Bottom Logged Interval

3430

Top Log Interval

2700

Casing Driller

8.625 @ 373

Casing Logger

373

Bit Size

7.875

Type Fluid in Hole

Chemical

Salinity, ppm CL

5,000

Density / Viscosity

9.4 63

pH / Fluid Loss

9.5 8.8

Source of Sample

Flowline

Rm @ Meas. Temp

.36 @ 52

Rmf @ Meas. Temp

.27 @ 52

Rmc @ Meas. Temp

.49 @ 52

Source of Rmf / Rmc

Charts

Rm @ BHT

.17 @ 110

Operating Rig Time

3 1/2 Hours

Max Rec. Temp. F

110

Equipment Number

17

Location

Hays

Recorded By

C. Desaire

Witnessed By

Jim Musgrove

<<< Fold Here >>>

All interpretations are opinions based on inferences from electrical or other measurements and we cannot and do not guarantee the accuracy or correctness of any interpretation, and we shall not, except in the case of gross or willful negligence on our part, be liable or responsible for any loss, costs, damages, or expenses incurred or sustained by anyone resulting from any interpretation made by any of our officers, agents or employees. These interpretations are also subject to our general terms and conditions set out in our current Price Schedule.

Comments

Thank you for using Pioneer Energy Services
www.pioneerenergy.com
785 625 3858

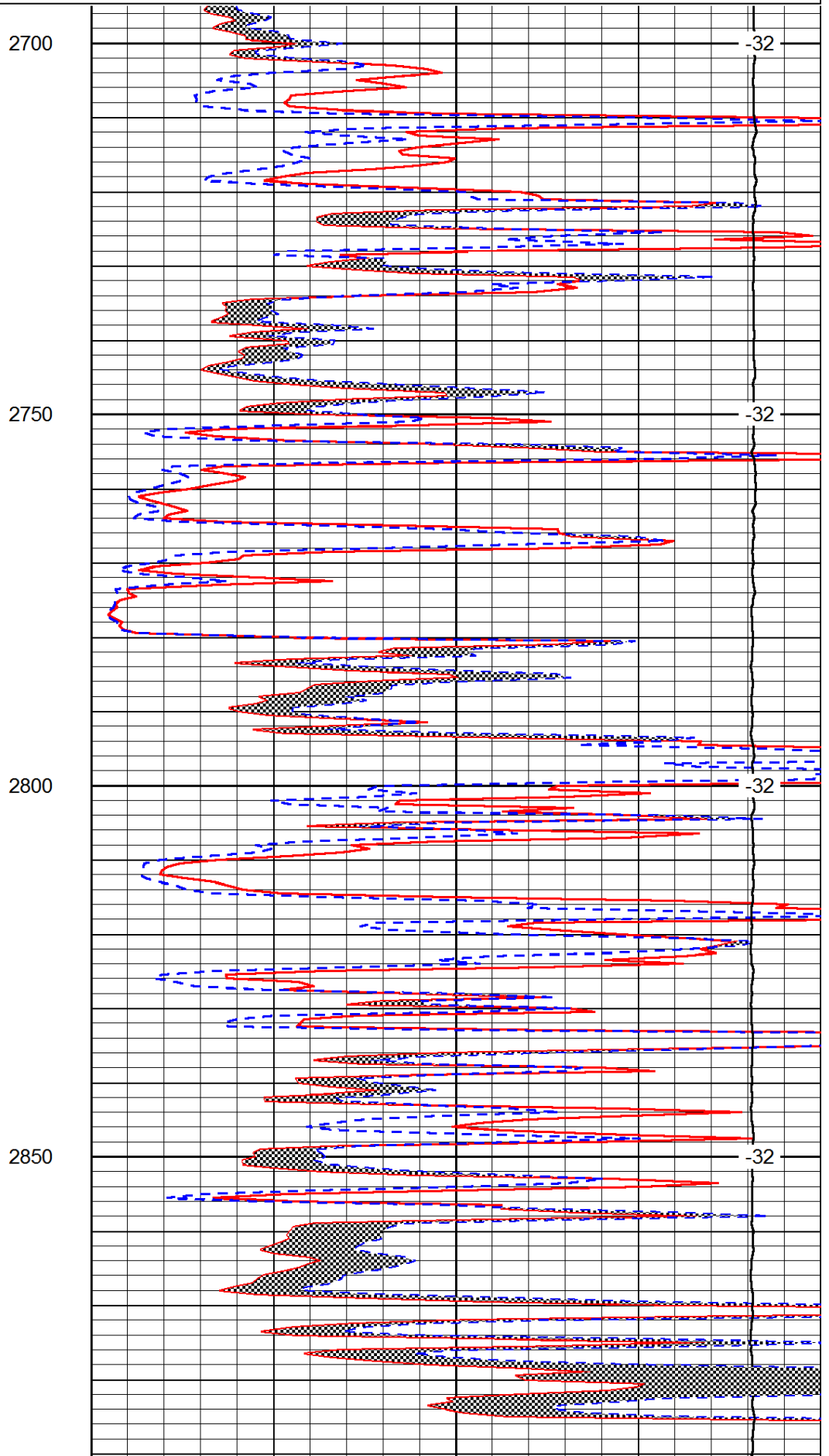
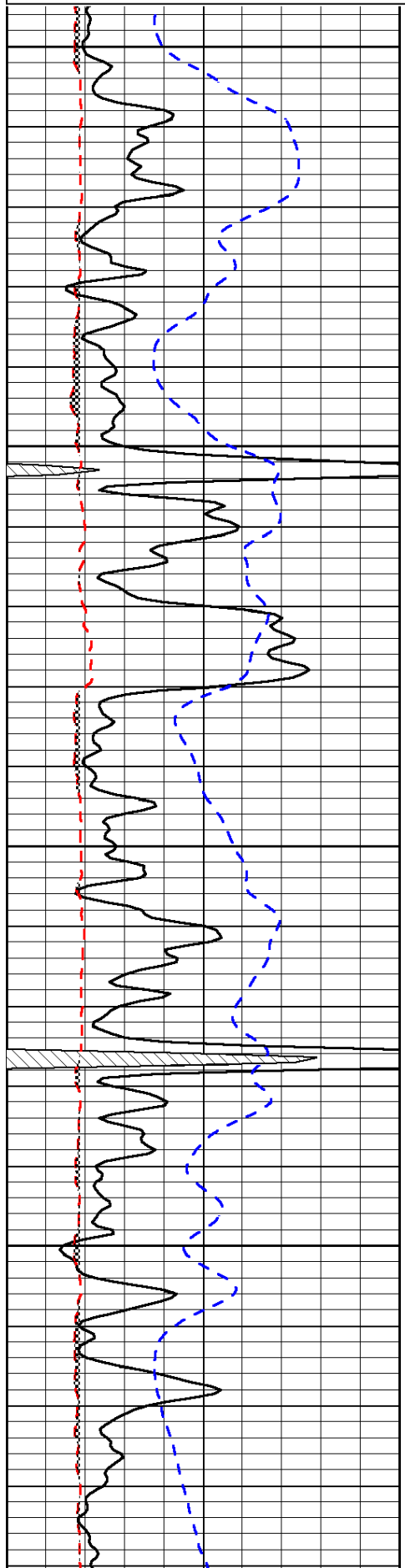
Wilson KS, 10 S to N Rd,
1/4 E, N Into

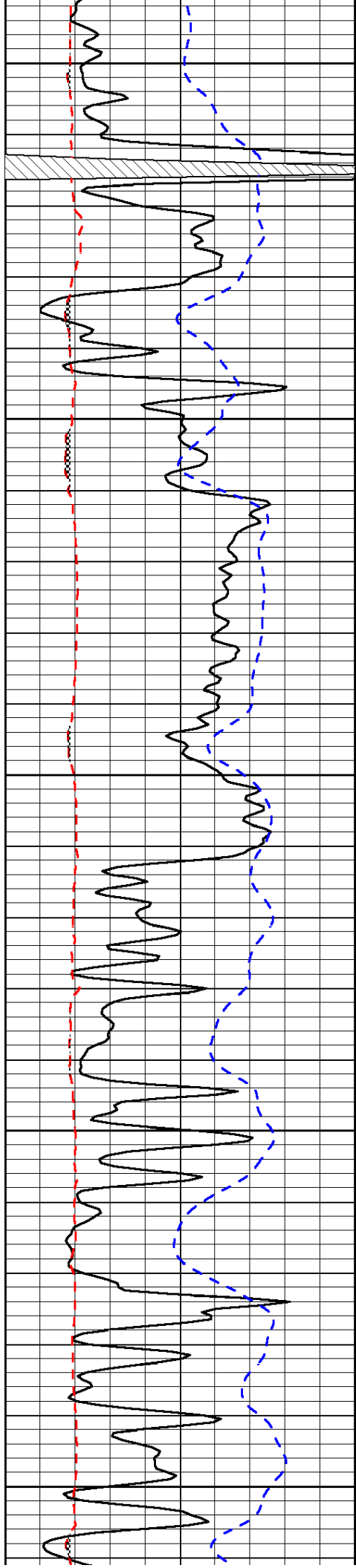
Database File: c:\warrior\data\c&k oil_barclay #4\ckhd.db
Dataset Pathname: dil/ckstk
Presentation Format: micro
Dataset Creation: Sun Jan 26 10:10:11 2014
Charted by: Depth in Feet scaled 1:240

0	Gamma Ray	150
6	Micro Log Caliper (GAPI)	16
-200	SP (mV)	0

0	Micro Inverse 1 X 1	40
0	Micro Normal 2"	40
15000	Line Weight	0

LSPD





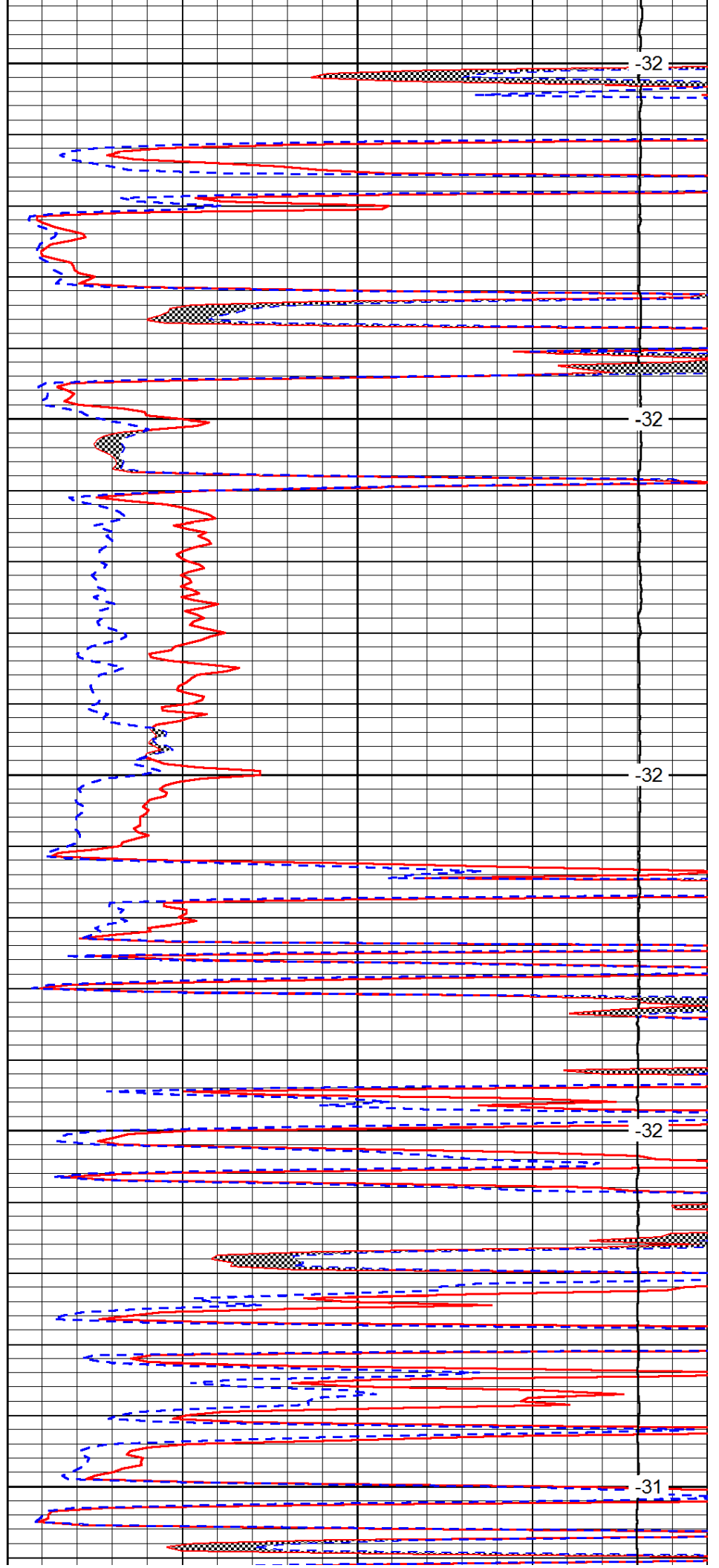
2900

2950

3000

3050

3100



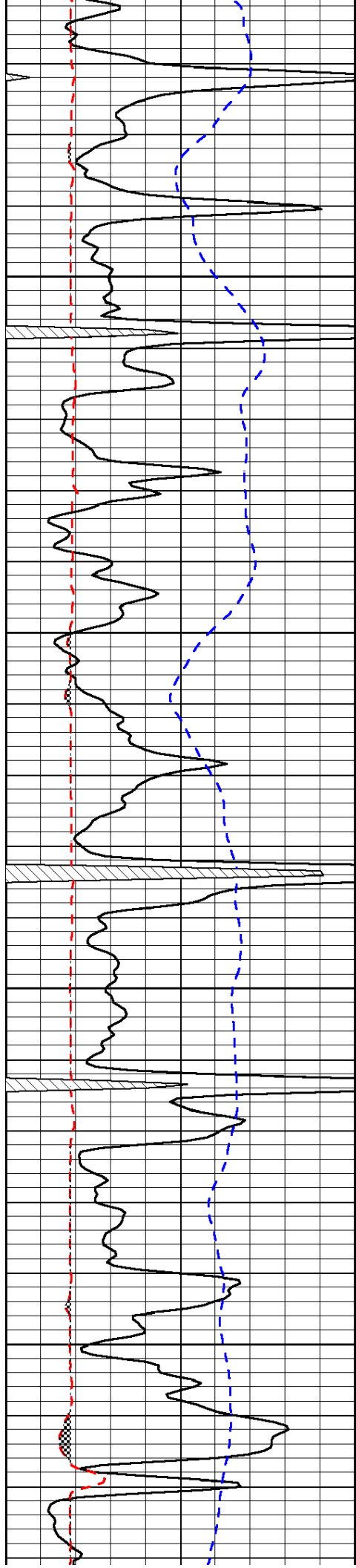
-32

-32

-32

-32

-31

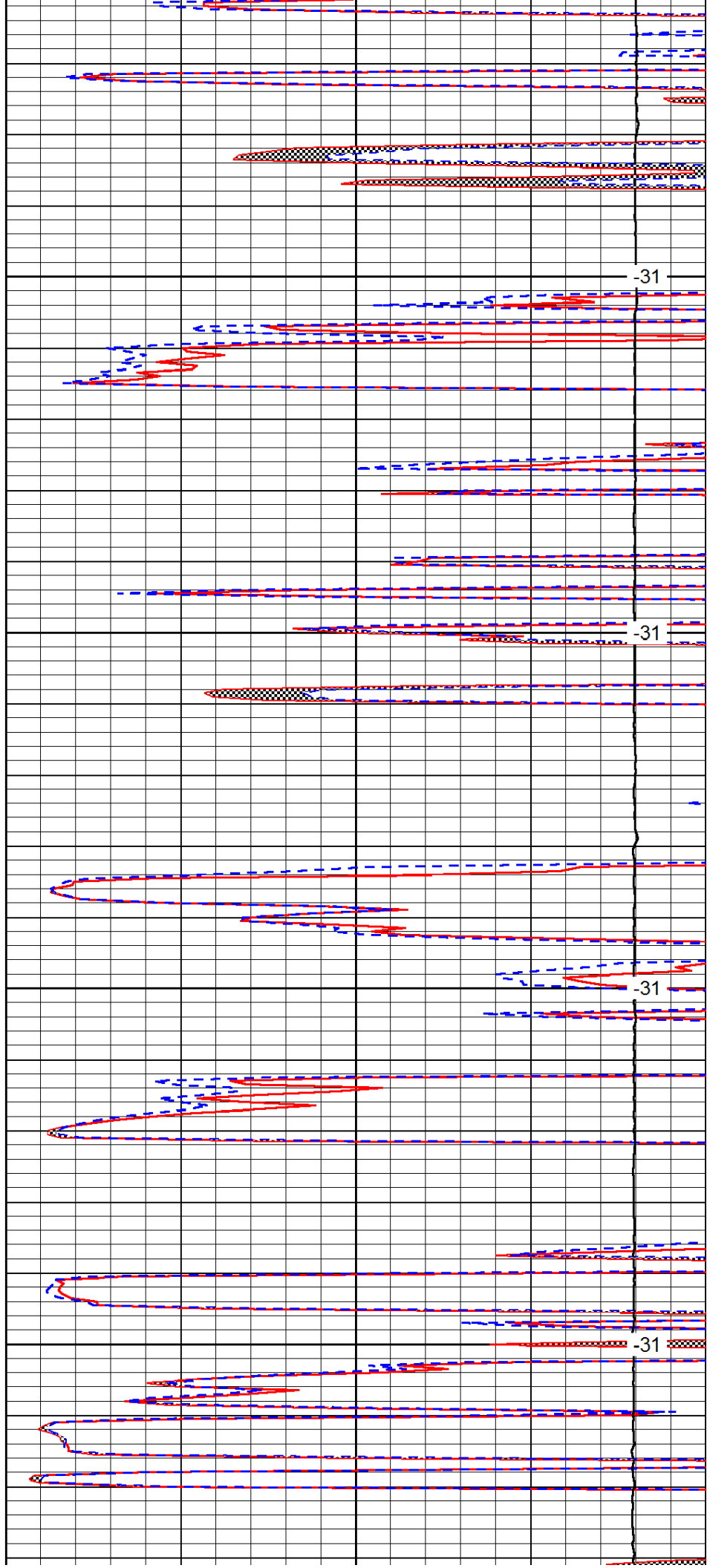


3150

3200

3250

3300

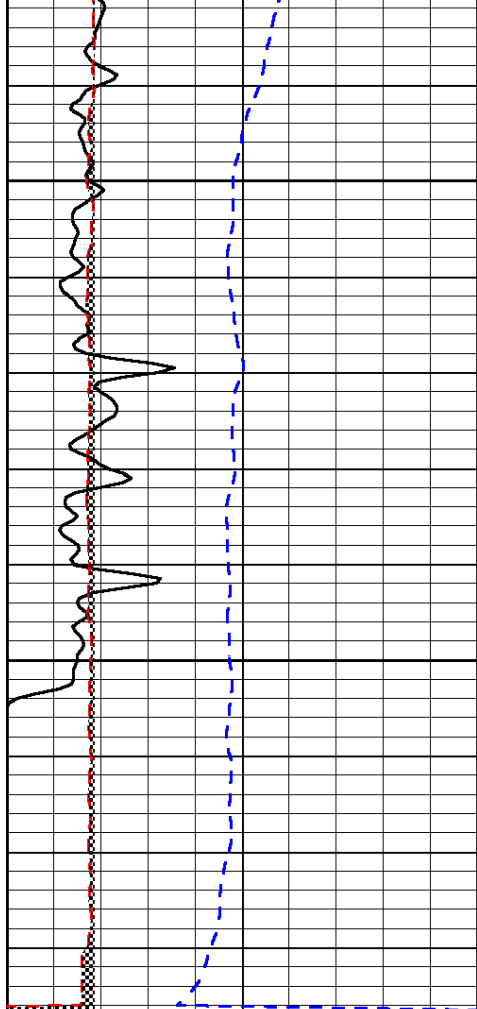


-31

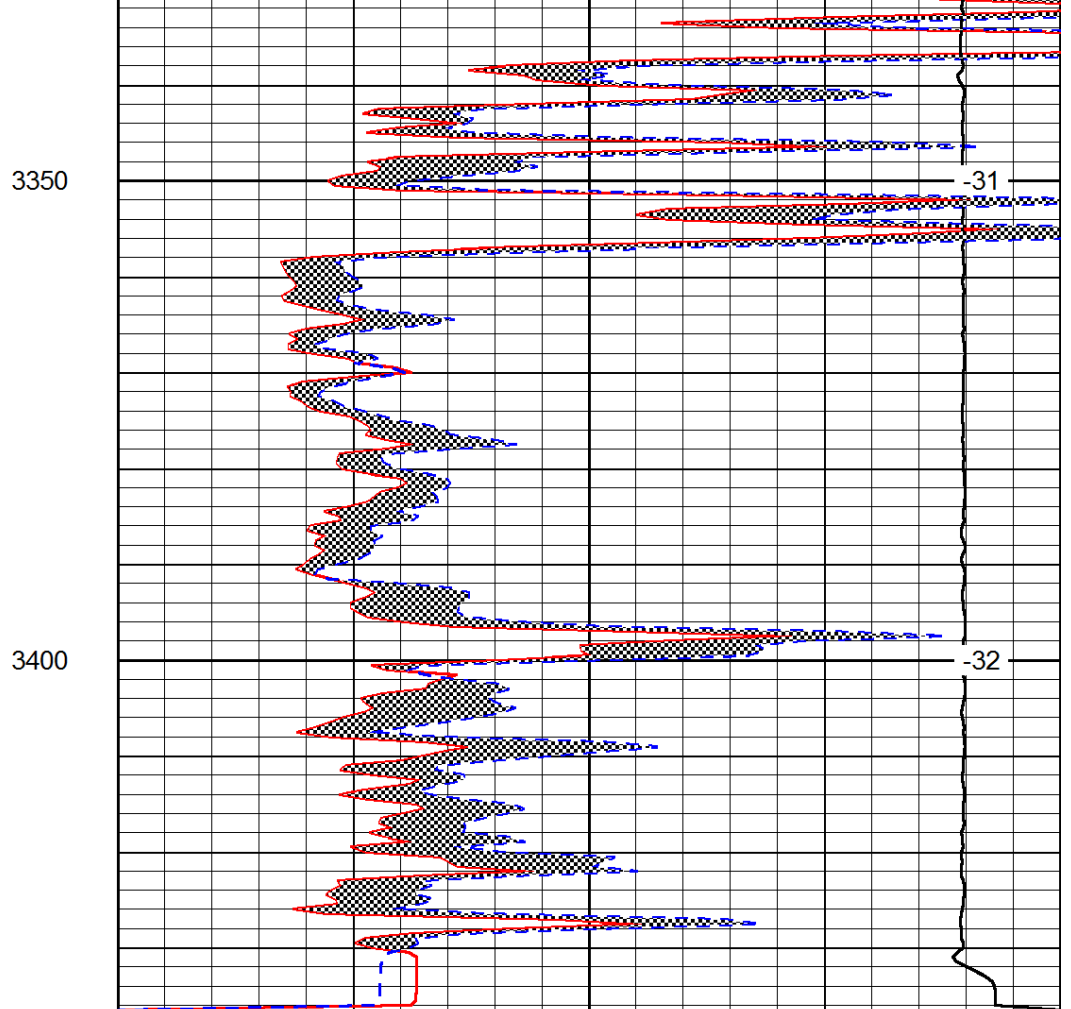
-31

-31

-31



0	Gamma Ray	150
6	Micro Log Caliper (GAPI)	16
-200	SP (mV)	0



0	Micro Inverse 1 X 1	40
0	Micro Normal 2"	40
15000	Line Weight	0

LSPD