



Pioneer Energy Services

Dual Induction Log

15-053-21,296-00-00

API No.

Company **C&K Oil Company**

Well **Barclay #4**

Field **Stoltenberg**

County **Ellsworth** State

Kansas

Location

450' FSL & 1250' FWL

Other Services
CNL/CDL
MEL

Sec: 6

Twp: 16S

Rge: 10W

Elevation

K.B. 1871

D.F. 1864

G.L. 1864

Permanent Datum

Ground Level

1864

Log Measured From

Kelly Bushing

7 Ft. Above Perm. Datum

Drilling Measured From

Kelly Bushing

Date

1/26/2014

Run Number

One

Depth Driller

3430

Depth Logger

3431

Bottom Logged Interval

3430

Top Log Interval

350

Casing Driller

8.625 @ 373

Casing Logger

373

Bit Size

7.875

Type Fluid in Hole

Chemical

Salinity, ppm CL

5,000

Density / Viscosity

9.4 63

pH / Fluid Loss

9.5 8.8

Source of Sample

Flowline

Rm @ Meas. Temp

.36 @ 52

Rmf @ Meas. Temp

.27 @ 52

Rmc @ Meas. Temp

.49 @ 52

Source of Rmf / Rmc

Charts

Rm @ BHT

.17 @ 110

Operating Rig Time

3 1/2 Hours

Max Rec. Temp. F

110

Equipment Number

17

Location

Hays

Recorded By

C. Desaire

Witnessed By

Jim Musgrove

<<< Fold Here >>>

All interpretations are opinions based on inferences from electrical or other measurements and we cannot and do not guarantee the accuracy or correctness of any interpretation, and we shall not, except in the case of gross or willful negligence on our part, be liable or responsible for any loss, costs, damages, or expenses incurred or sustained by anyone resulting from any interpretation made by any of our officers, agents or employees. These interpretations are also subject to our general terms and conditions set out in our current Price Schedule.

Comments

Thank you for using Pioneer Energy Services
www.pioneerenergy.com
785 625 3858

Wilson KS, 10 S to N Rd,
1/4 E, N Into

Database File: c:\warrior\data\c&k oil_barclay #4\ckhd.db
Dataset Pathname: dil/ckstk
Presentation Format: dil2in
Dataset Creation: Sun Jan 26 10:10:11 2014
Charted by: Depth in Feet scaled 1:600

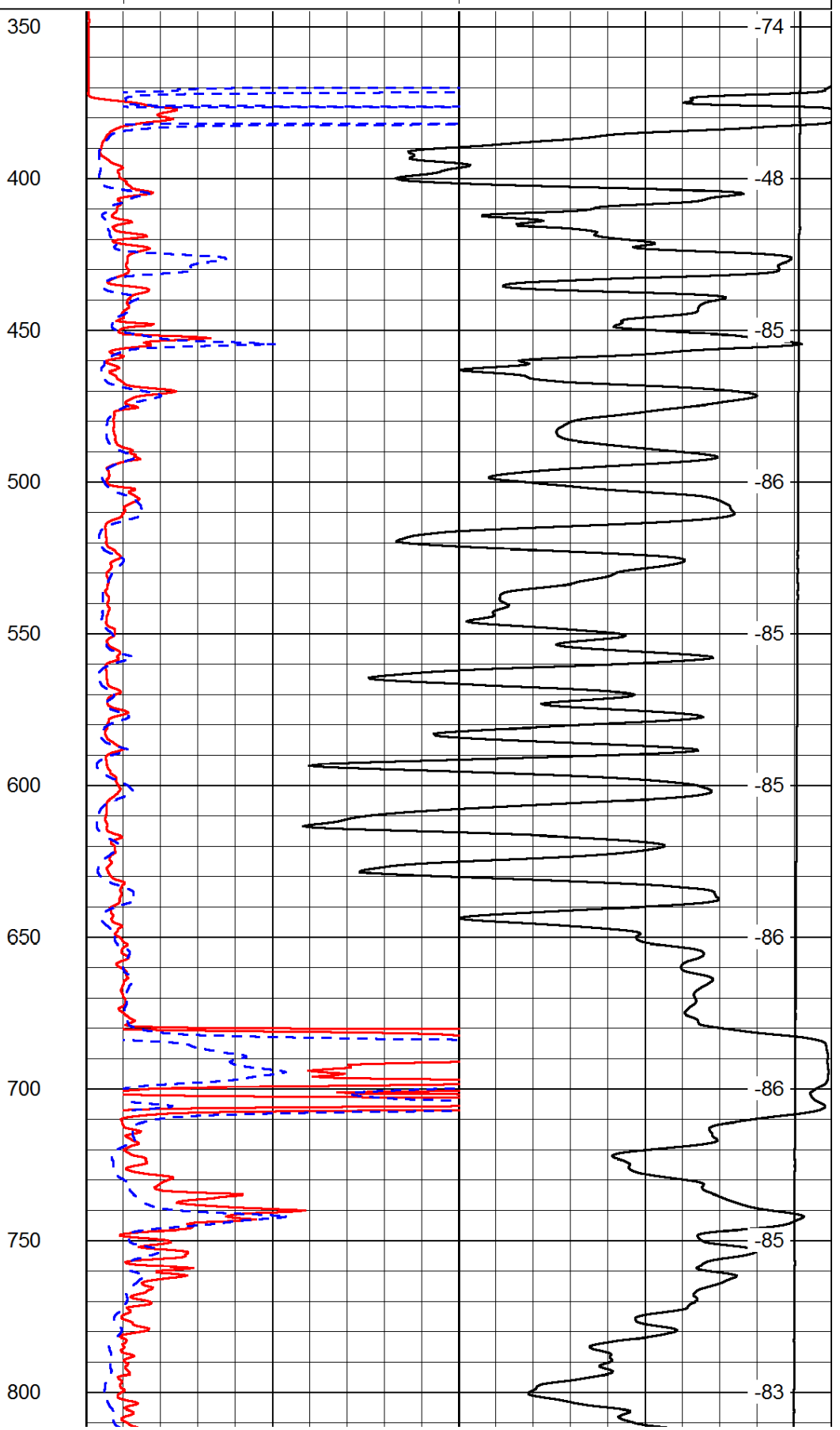
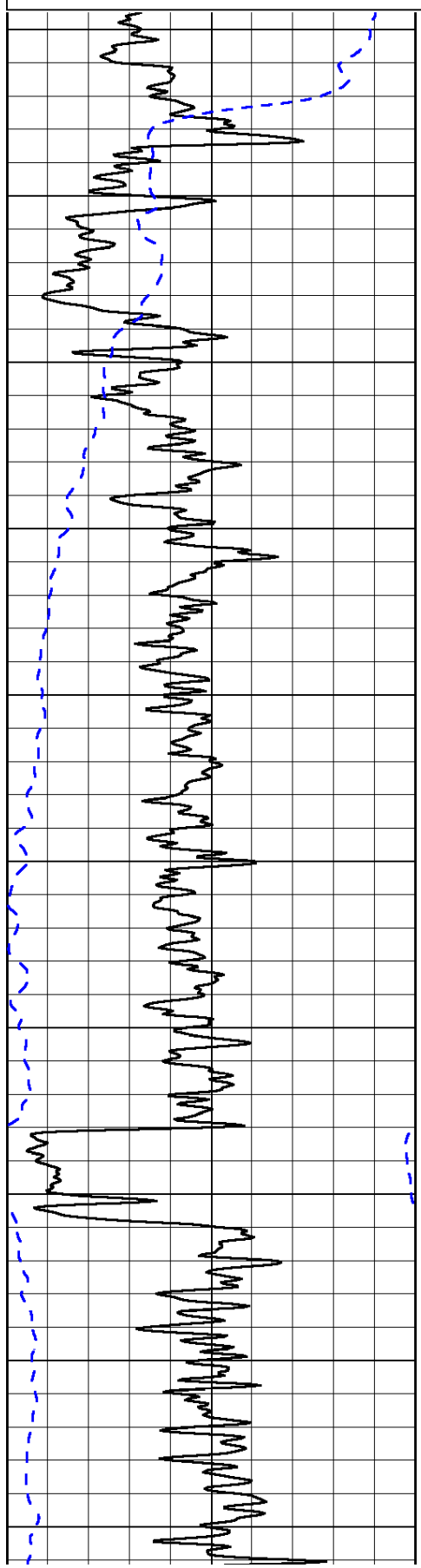
0	Gamma Ray	150
-200	SP (mV)	0

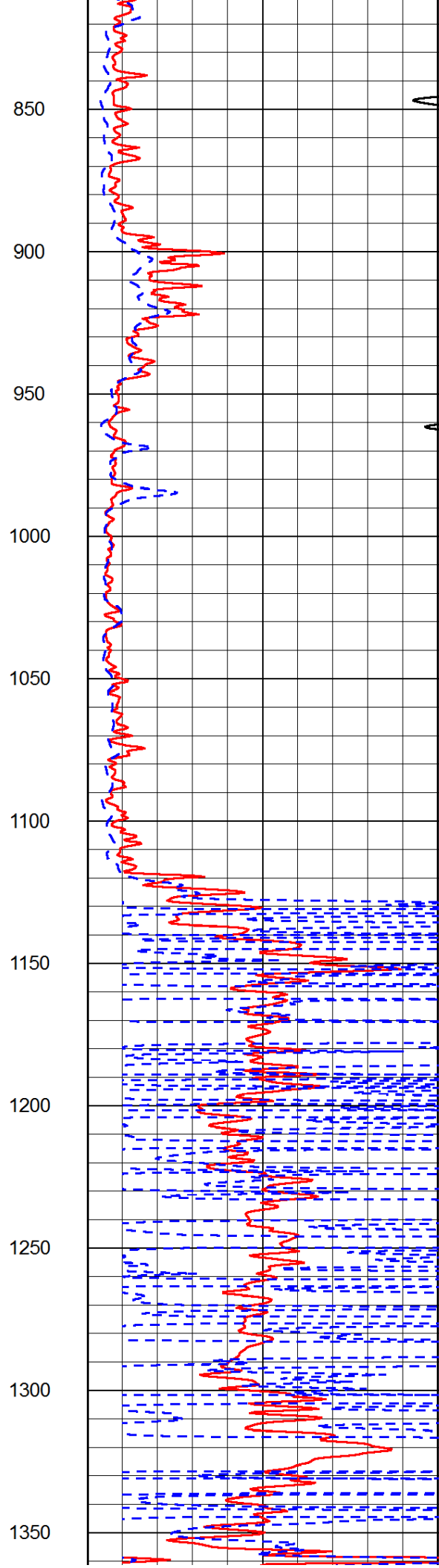
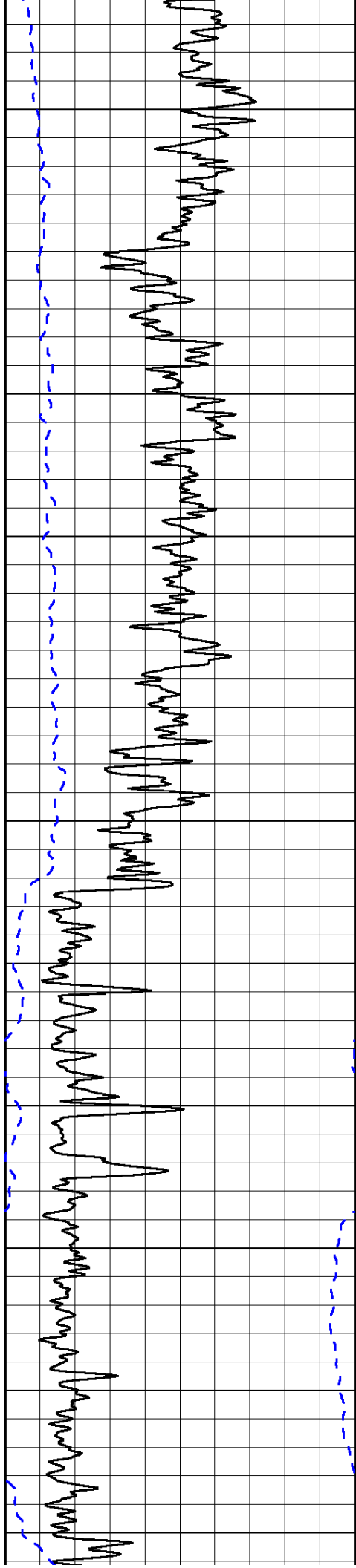
0	Shallow Resistivity	50
0	Deep Resistivity	50

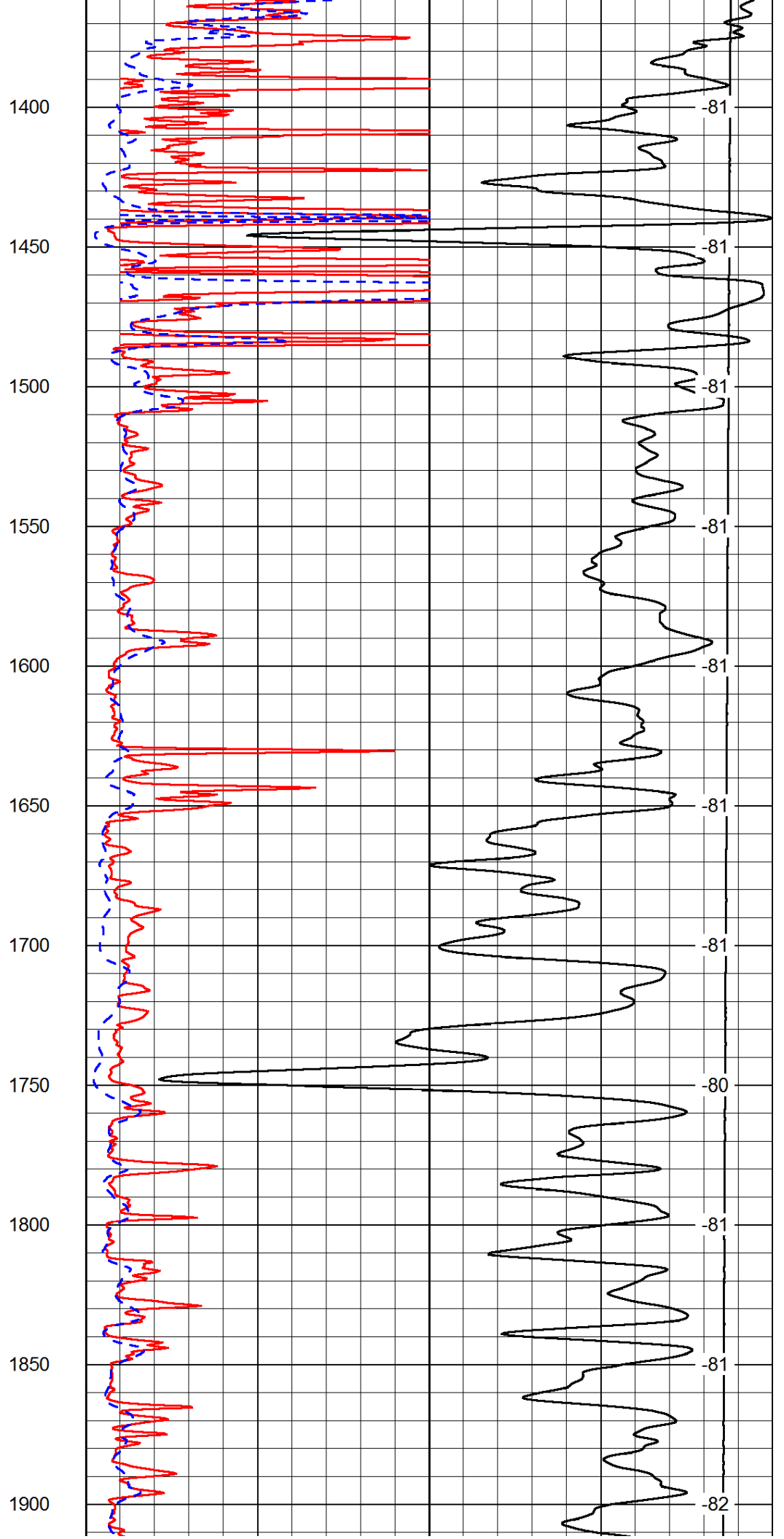
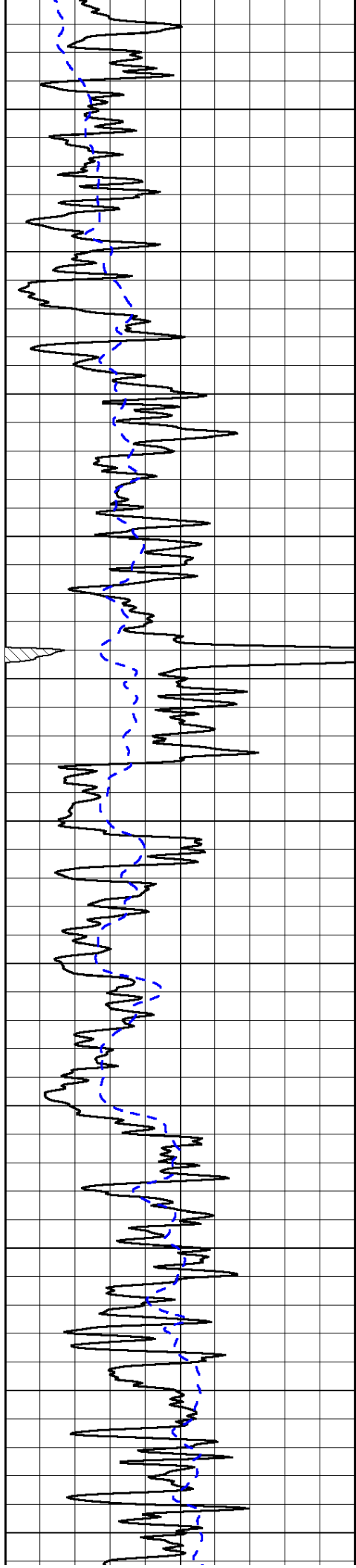
LSPD

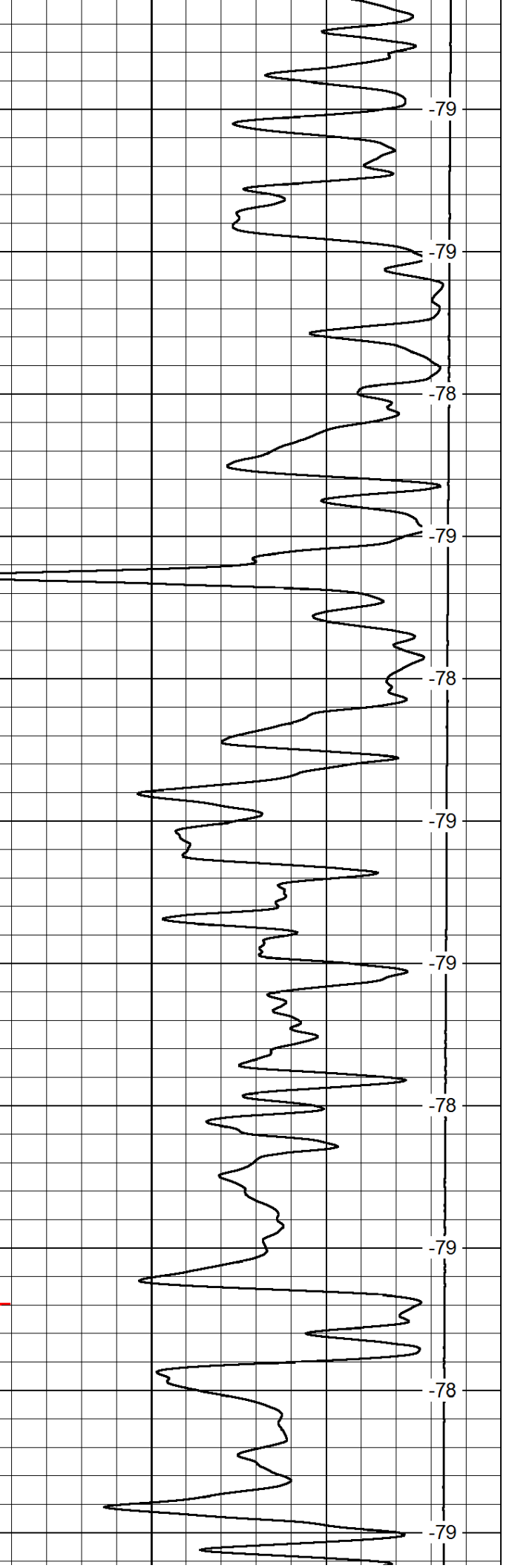
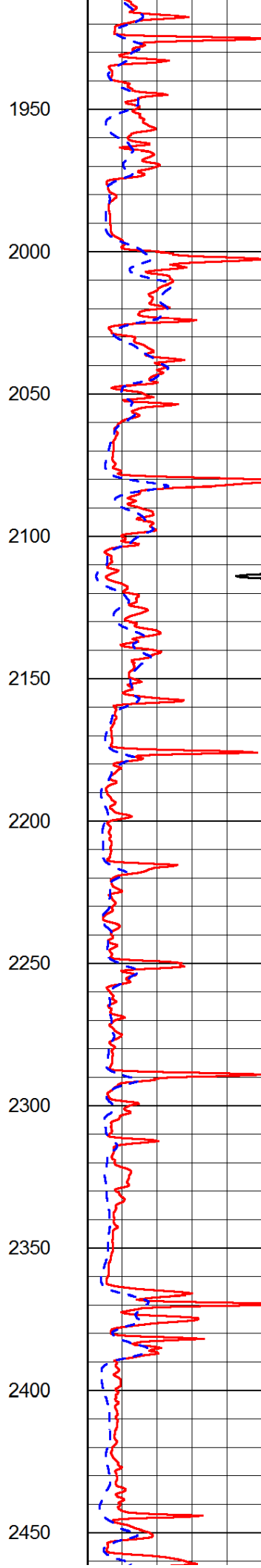
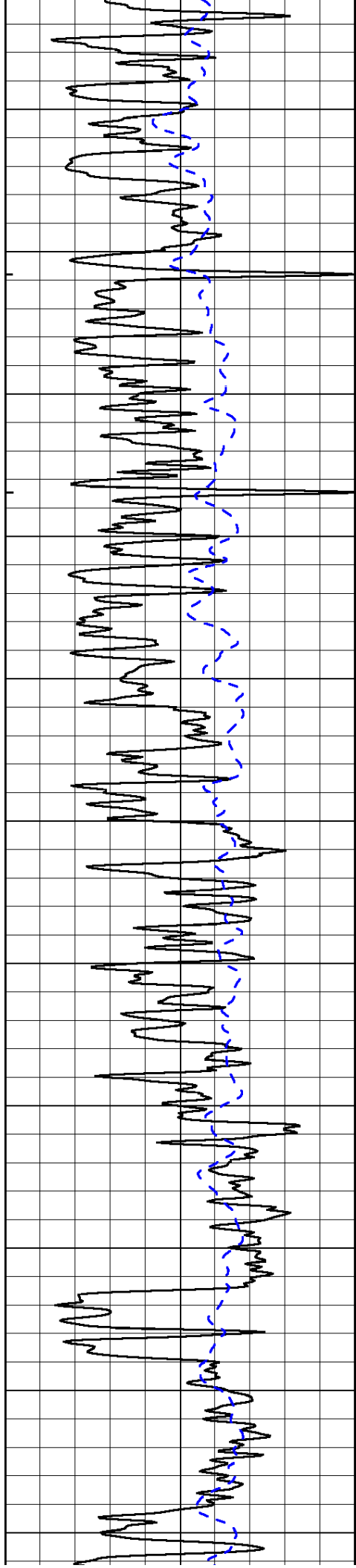
1000	Conductivity	0
15000	Line Tension	0

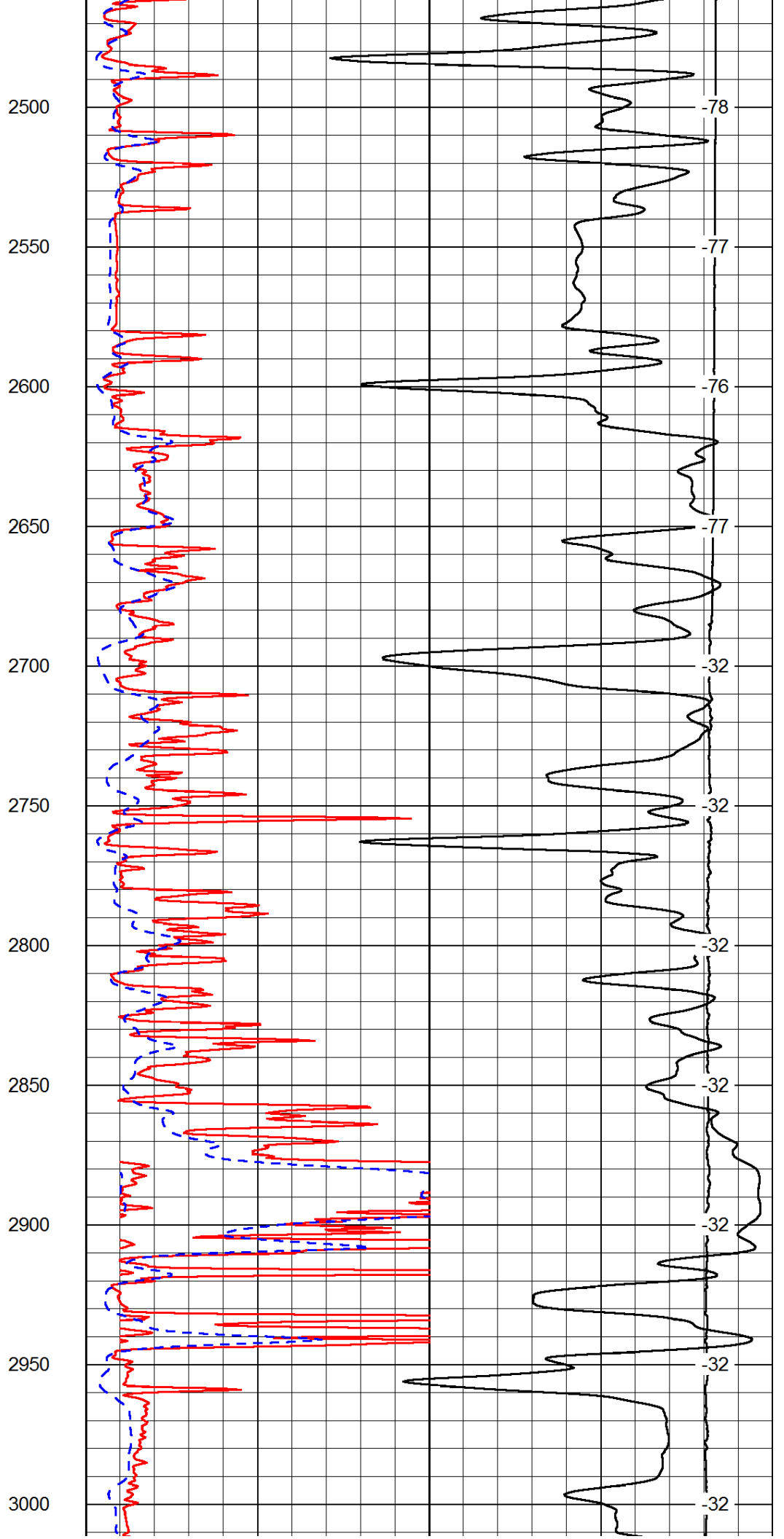
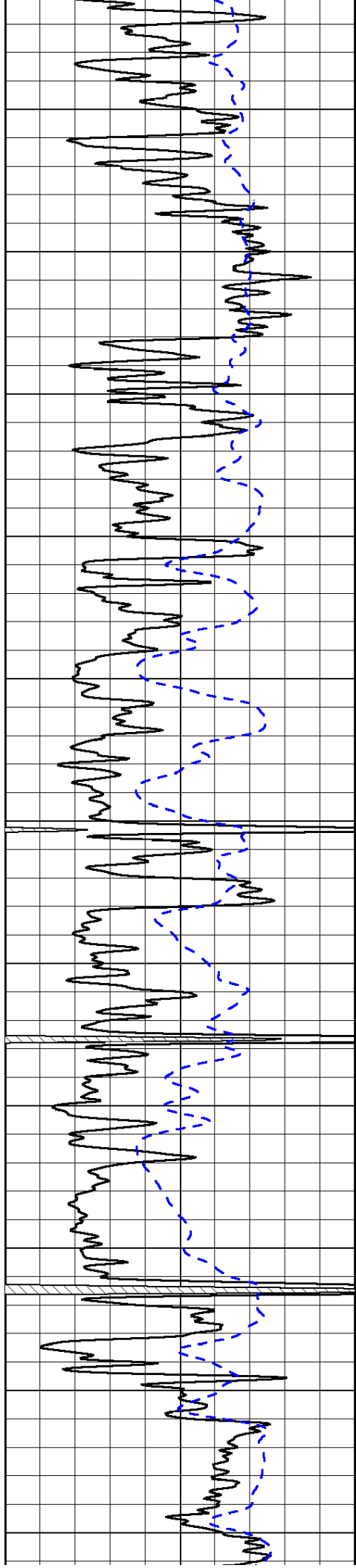
50	Shallow Resistivity	500
50	Deep Resistivity	500

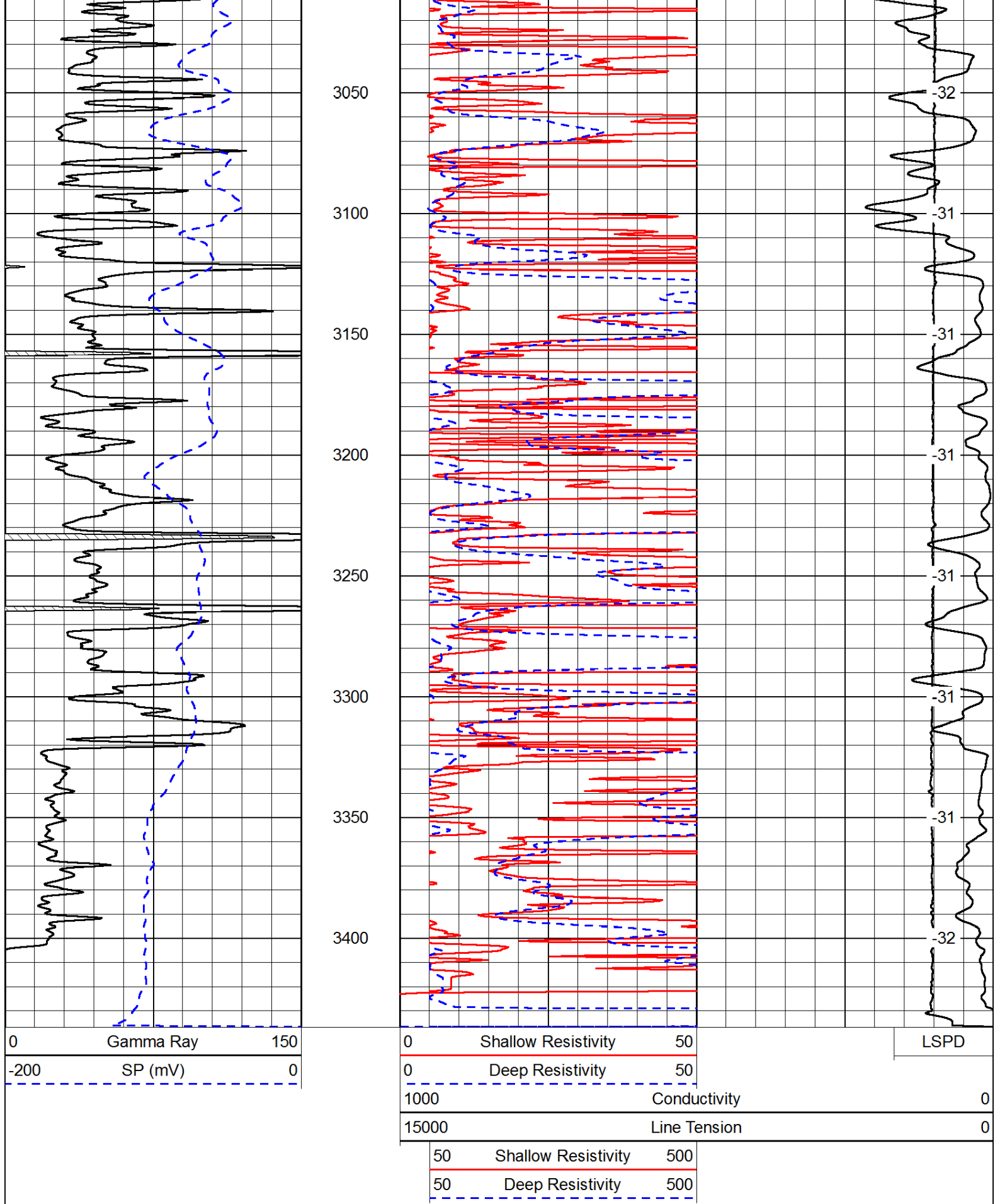












Database File: c:\warrior\data\c&k oil_barclay #4\ckhd.db
 Dataset Pathname: dil/ckstk
 Presentation Format: dil
 Dataset Creation: Sun Jan 26 10:10:11 2014

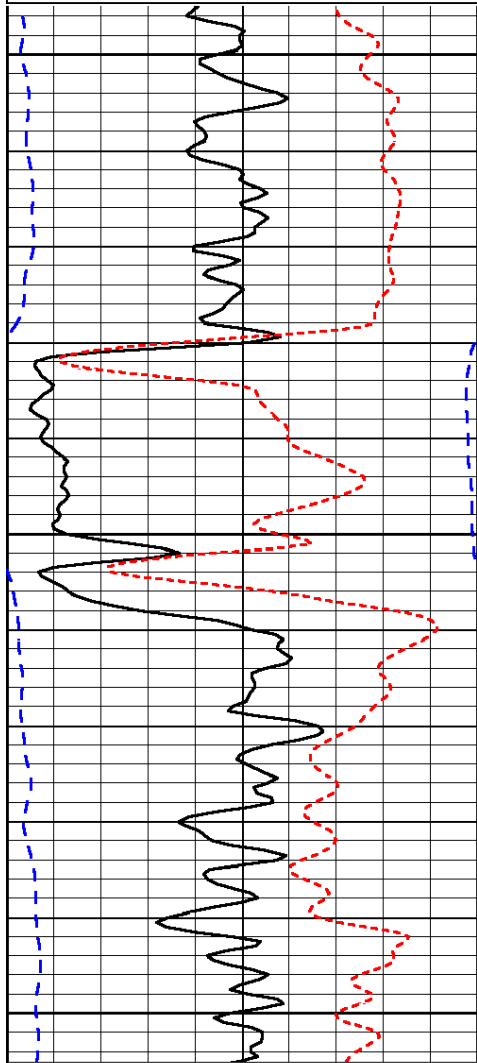
Charted by:

Depth in Feet scaled 1:240

0	Gamma Ray	150
-200	SP (mV)	0
-160	RxoRt	40

0.2	Deep Resistivity	2000
0.2	Medium Resistivity	2000
0.2	Shallow Resistivity	2000
15000	Line Tension	0

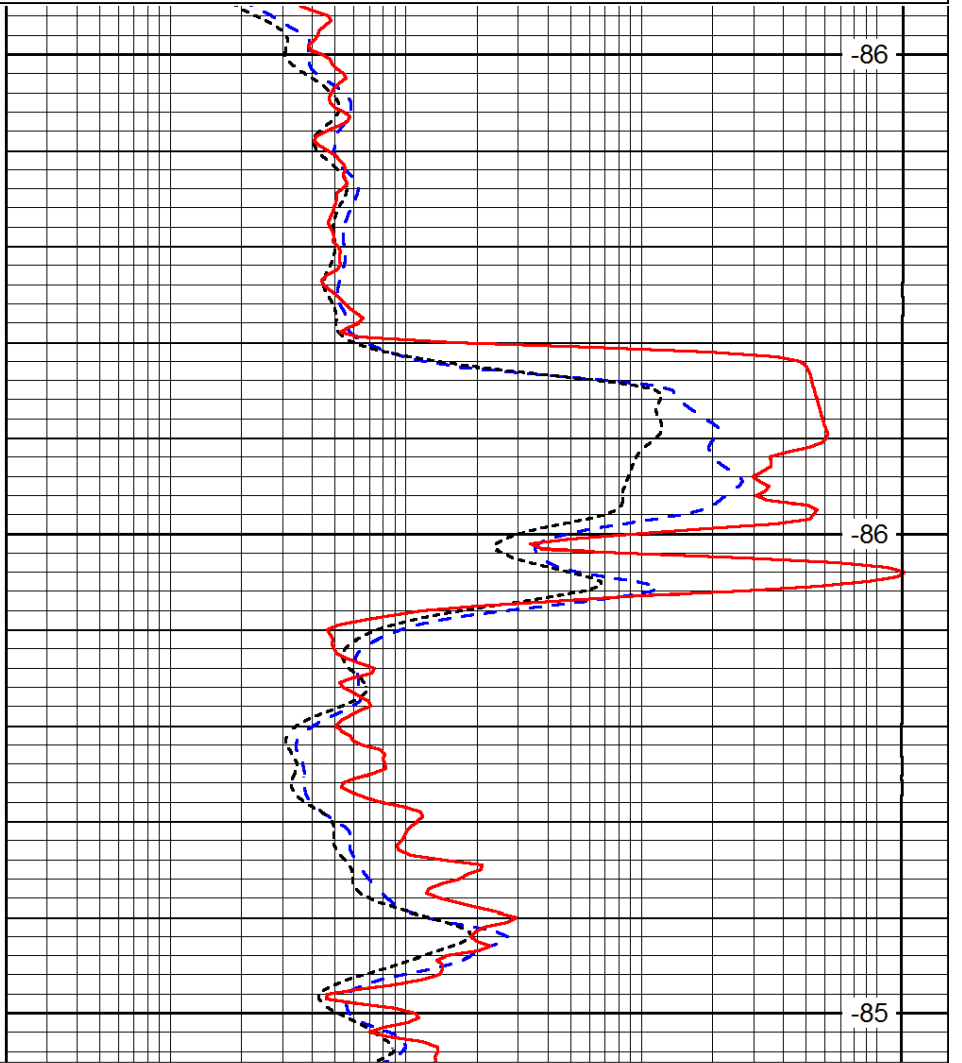
LSPD



650

700

750



-86

-86

-85

0	Gamma Ray	150
-200	SP (mV)	0
-160	RxoRt	40

0.2	Deep Resistivity	2000
0.2	Medium Resistivity	2000
0.2	Shallow Resistivity	2000
15000	Line Tension	0

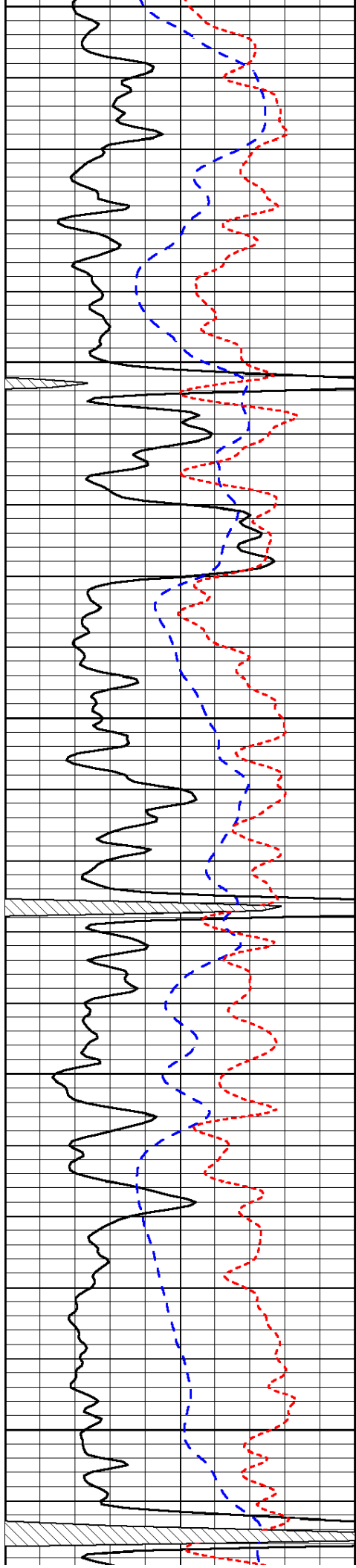
LSPD

Database File: c:\warrior\data\c&k oil_barclay #4\ckhd.db
 Dataset Pathname: dil/ckstk
 Presentation Format: dil
 Dataset Creation: Sun Jan 26 10:10:11 2014
 Charted by: Depth in Feet scaled 1:240

0	Gamma Ray	150
-200	SP (mV)	0
-160	RxoRt	40

0.2	Deep Resistivity	2000
0.2	Medium Resistivity	2000
0.2	Shallow Resistivity	2000
15000	Line Tension	0

LSPD



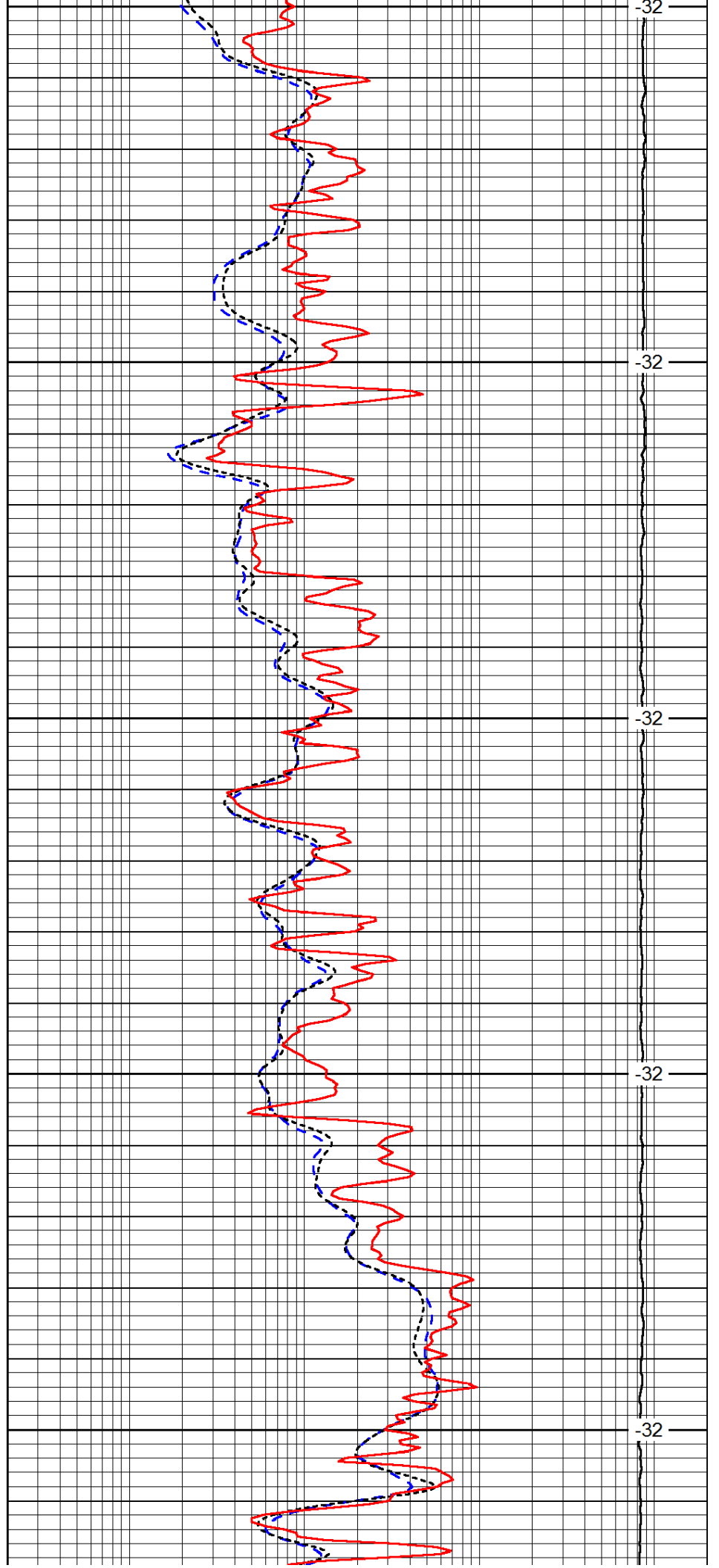
2700

2750

2800

2850

2900



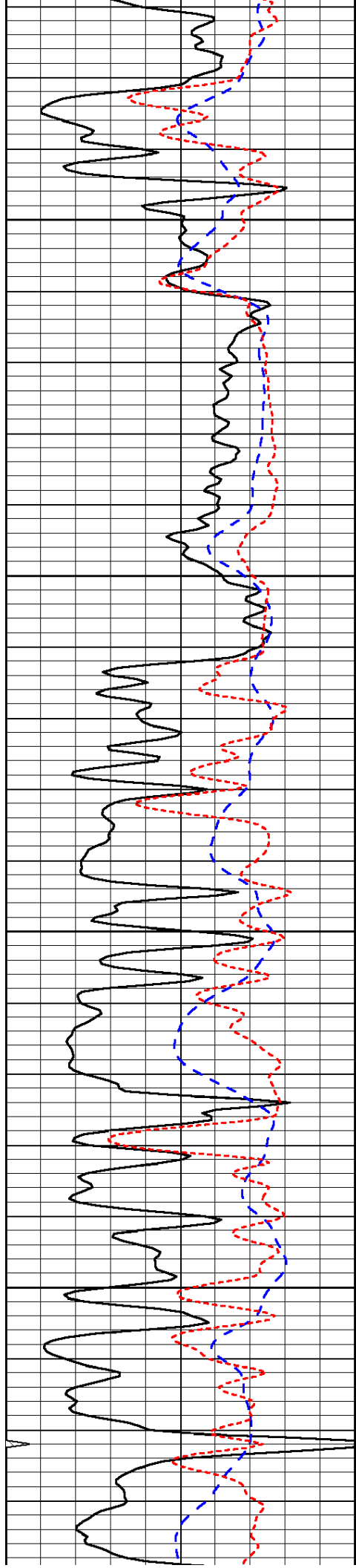
-32

-32

-32

-32

-32

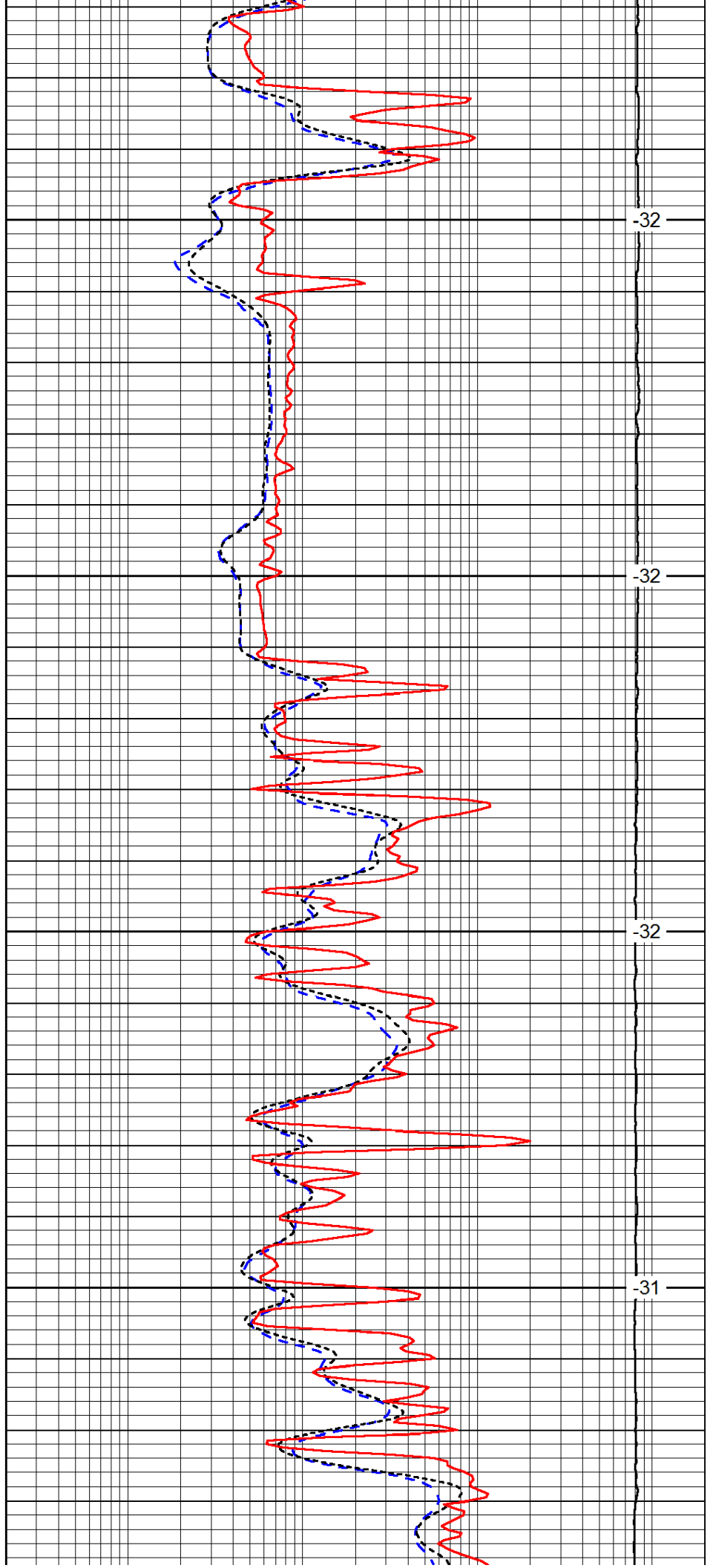


2950

3000

3050

3100

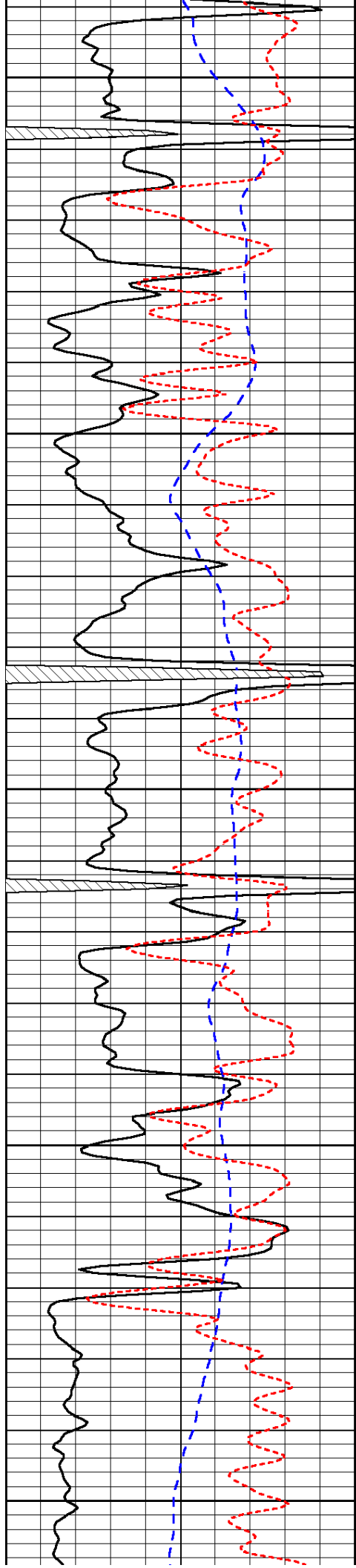


-32

-32

-32

-31



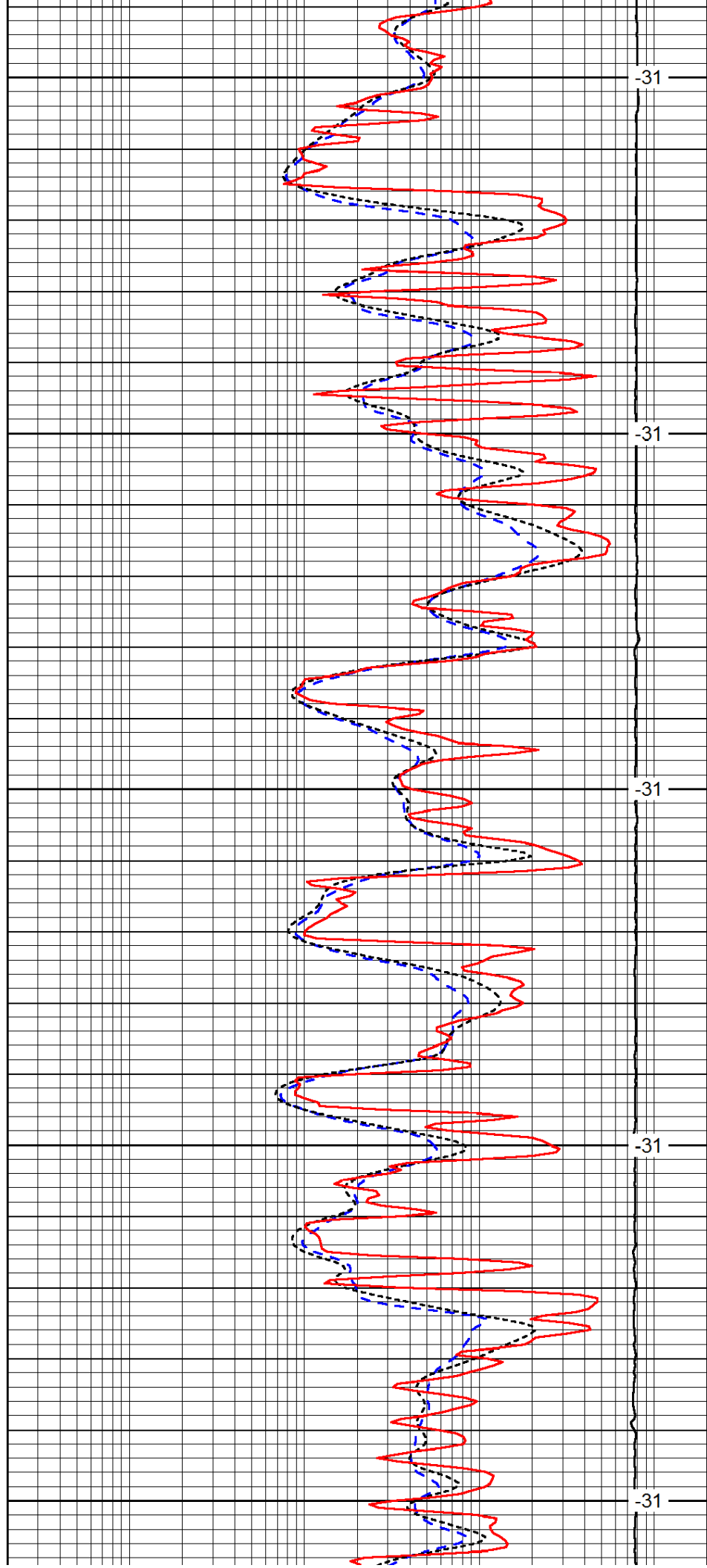
3150

3200

3250

3300

3350



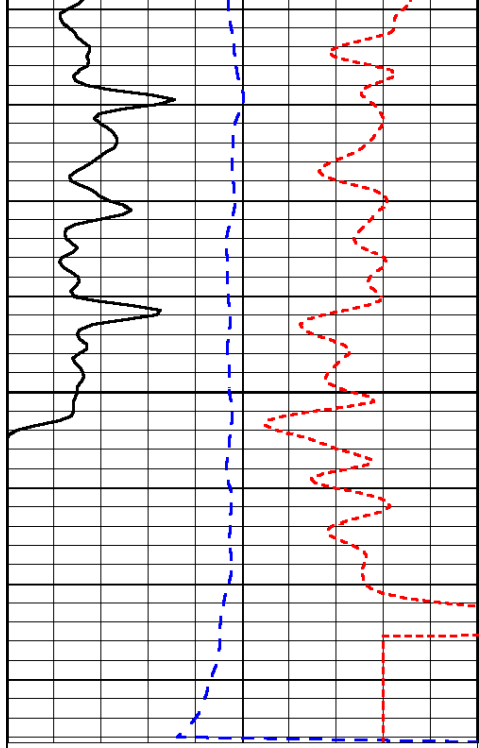
-31

-31

-31

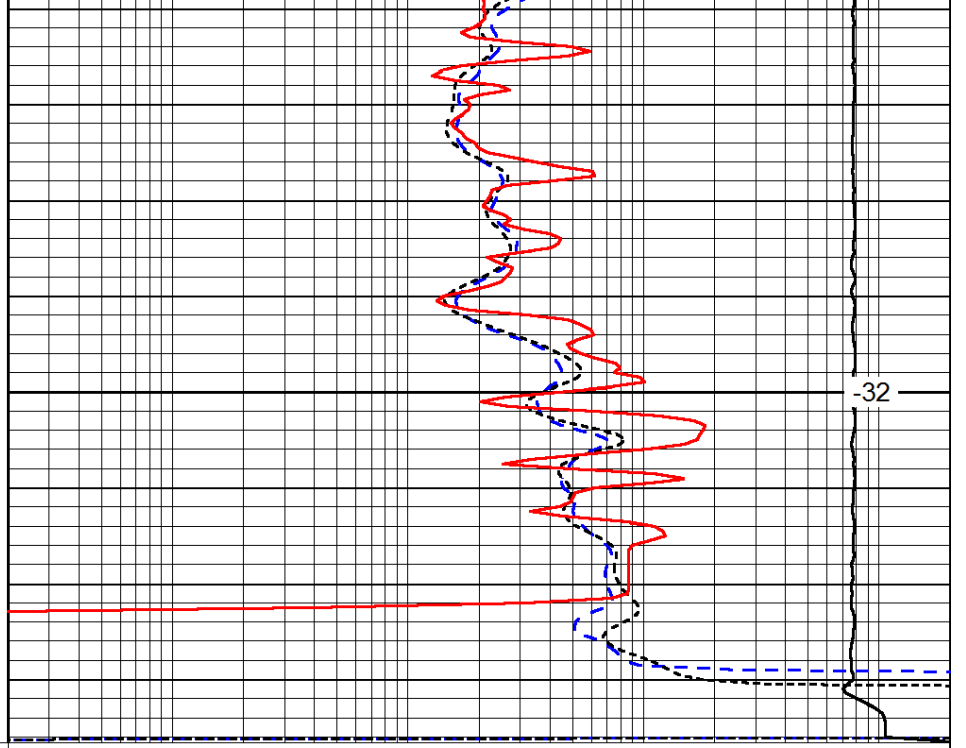
-31

-31



0	Gamma Ray	150
-200	SP (mV)	0
-160	RxoRt	40

3400



0.2	Deep Resistivity	2000
0.2	Medium Resistivity	2000
0.2	Shallow Resistivity	2000
15000	Line Tension	0

-32

LSPD