



Pioneer Energy Services

Dual Compensated Porosity Log

15-053-21,296-00-00

API No.

Company **C&K Oil Company**
 Well **Barclay #4**
 Field **Stoltenberg**
 County **Ellsworth** State **Kansas**

Location **450' FSL & 1250' FWL**
 Sec: **6** Twp: **16S** Rge: **10W**

Other Services
 DIL
 MEL

Permanent Datum **Ground Level** Elevation **1864**
 Log Measured From **Kelly Bushing** **7** Ft. Above Perm. Datum
 Drilling Measured From **Kelly Bushing**

Elevation
 K.B. **1871**
 D.F. **1864**
 G.L. **1864**

Date	1/26/2014	
Run Number	One	
Type Log	CNL / CDL	
Depth Driller	3430	
Depth Logger	3431	
Bottom Logged Interval	3410	
Top Logged Interval	2700	
Type Fluid In Hole	Chemical	
Salinity, PPM CL	5,000	
Density	9.4	
Level	Full	
Max. Rec. Temp. F	110	
Operating Rig Time	3 1/2 Hours	
Equipment -- Location	17 Hays	
Recorded By	C. Desaire	
Witnessed By	Jim Musgrove	

Borehole Record			Casing Record				
Run No.	Bit	From	To	Size	Wgt.	From	To
1	12.25	00	373	8.625	24#	00	373
2	7.875	373	3430				

<<< Fold Here >>>

All interpretations are opinions based on inferences from electrical or other measurements and we cannot and do not guarantee the accuracy or correctness of any interpretation, and we shall not, except in the case of gross or willful negligence on our part, be liable or responsible for any loss, costs, damages, or expenses incurred or sustained by anyone resulting from any interpretation made by any of our officers, agents or employees. These interpretations are also subject to our general terms and conditions set out in our current Price Schedule.

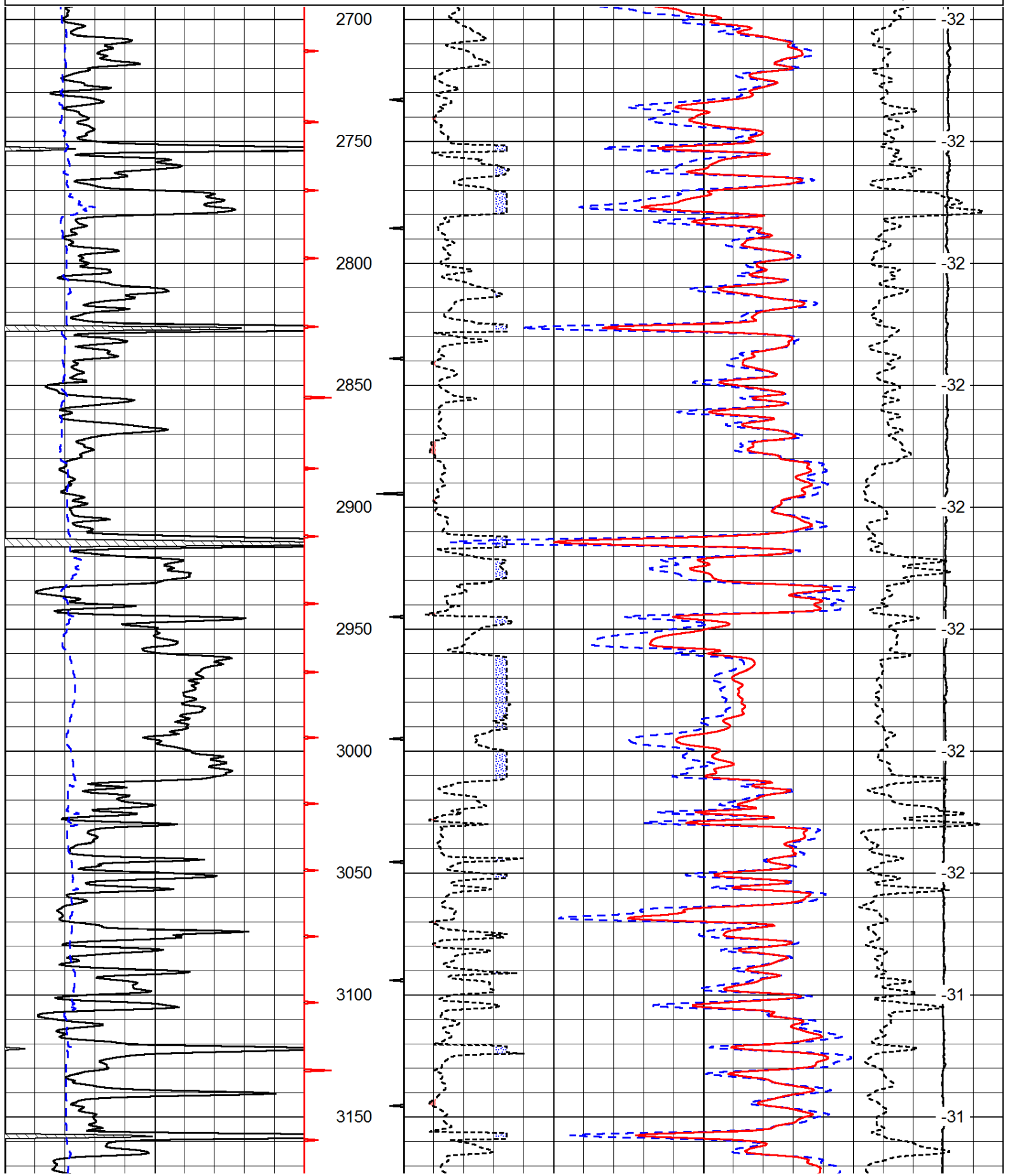
Comments

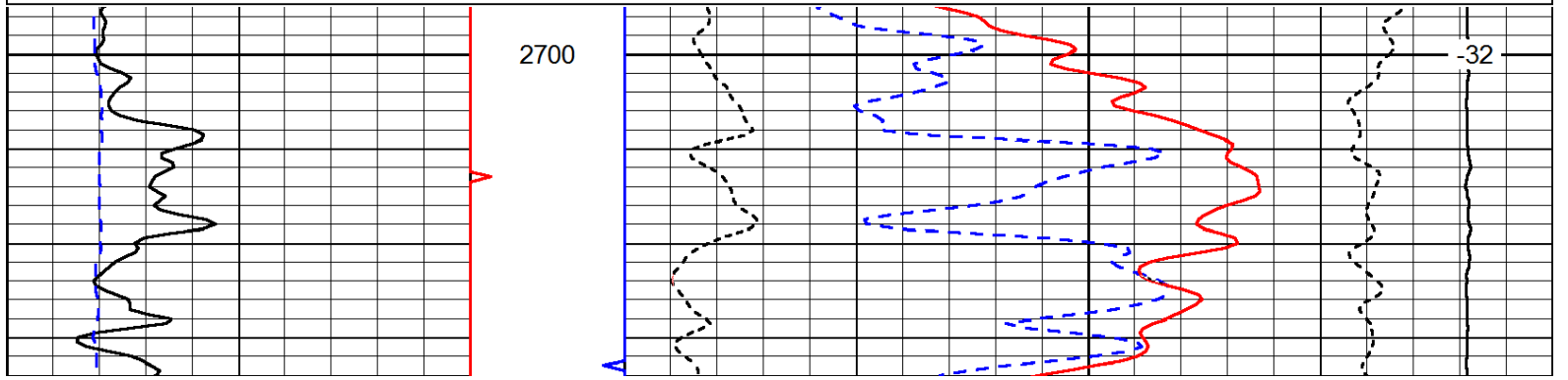
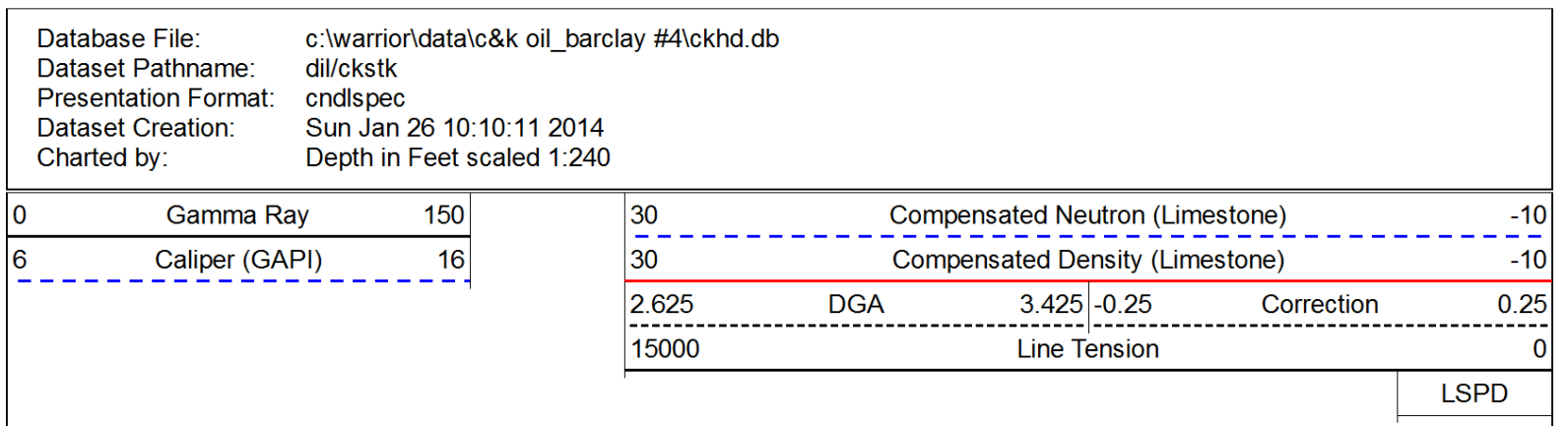
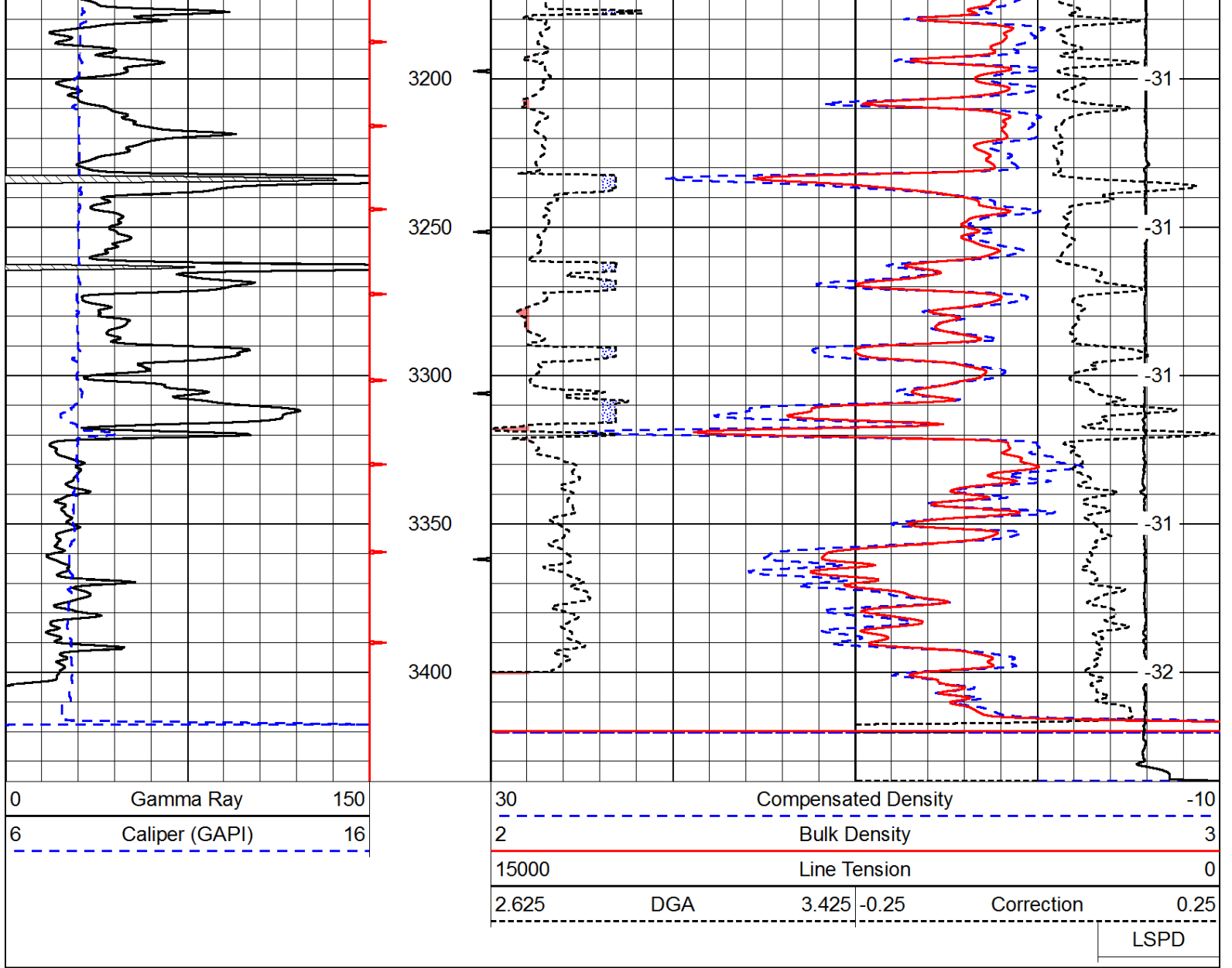
Thank you for using Pioneer Energy Services
www.pioneerenergy.com
 785 625 3858

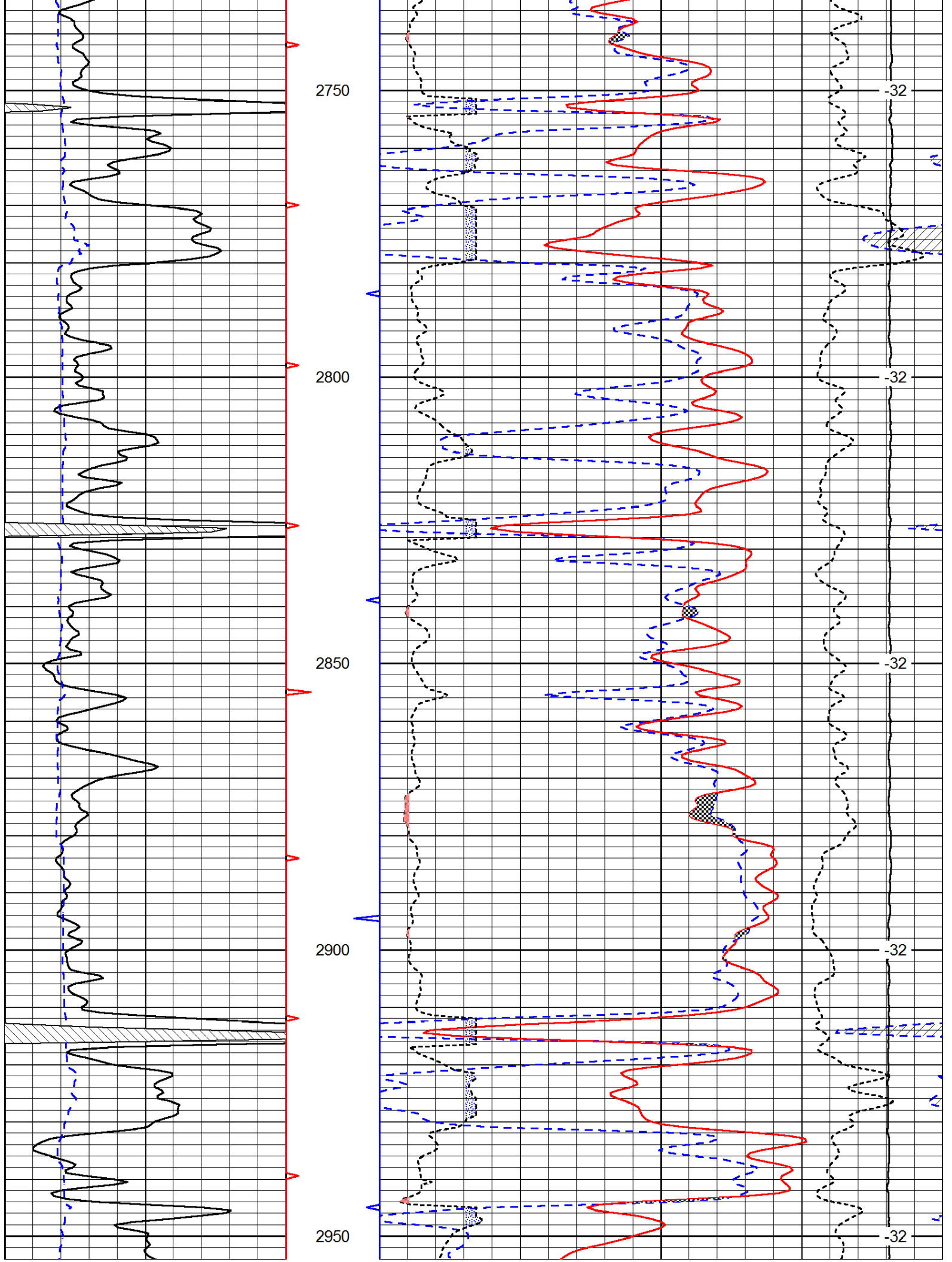
 Wilson KS, 10 S to N Rd,
 1/4 E, N Into

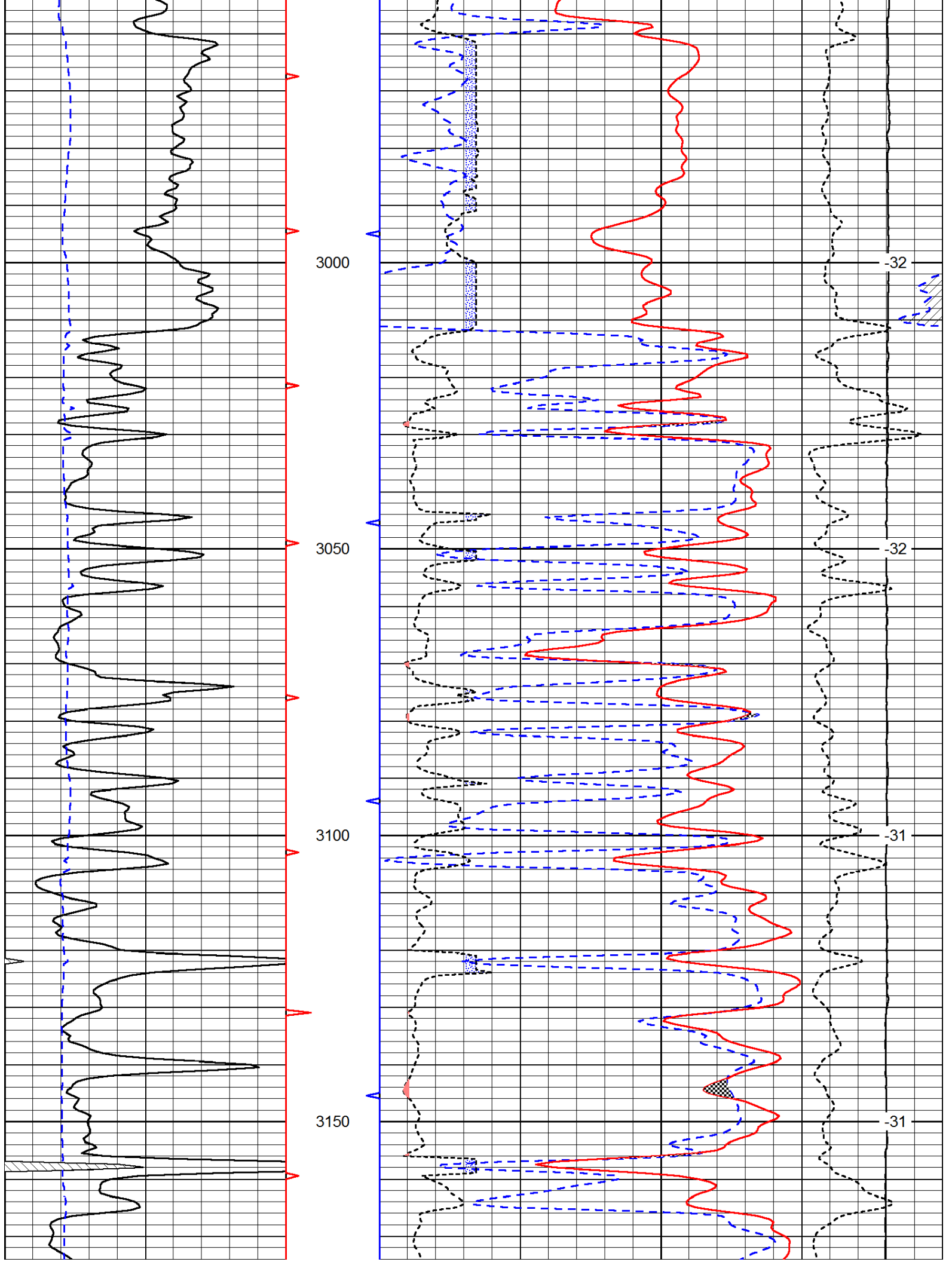
0	Gamma Ray	150
6	Caliper (GAPI)	16

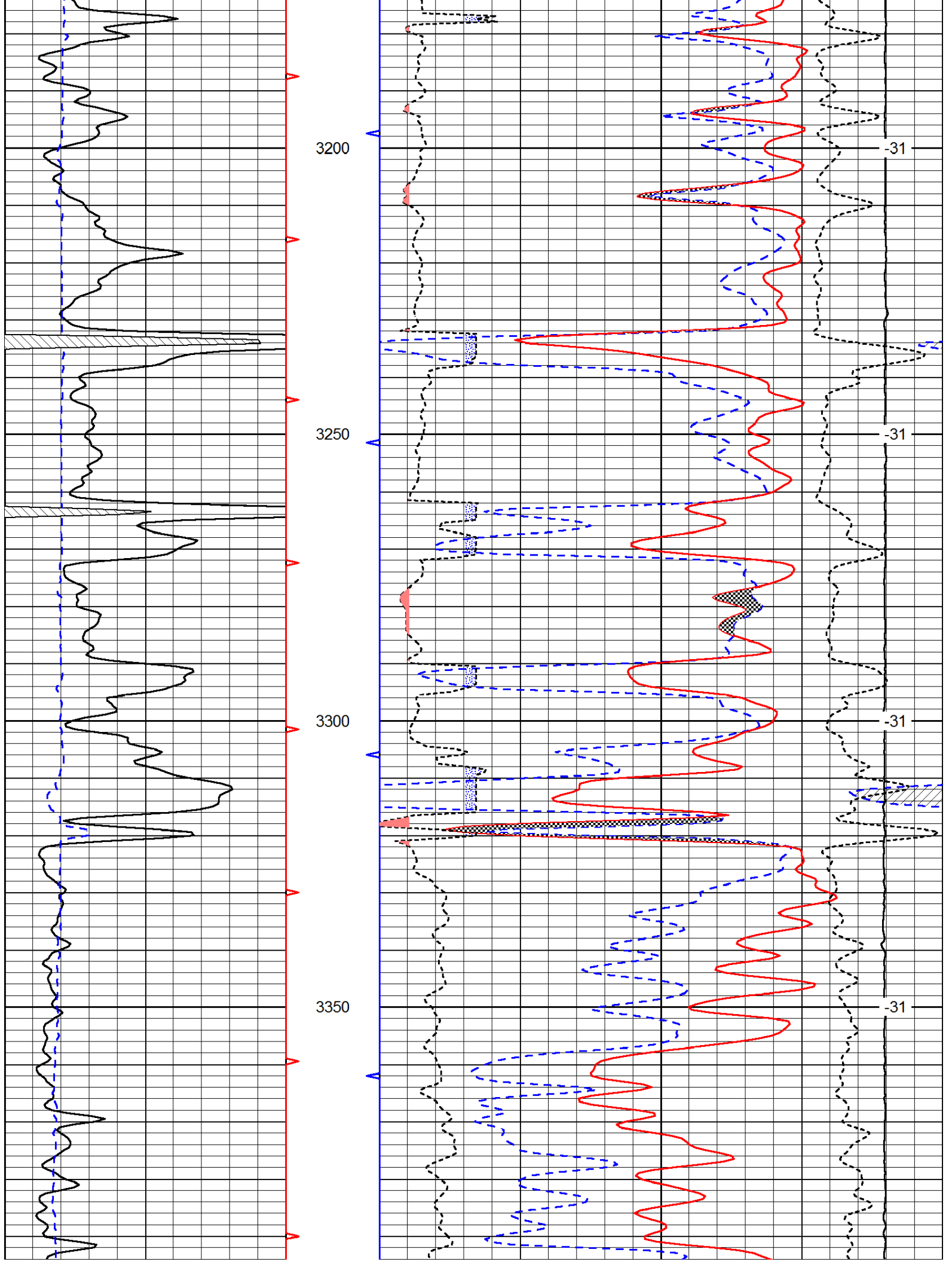
30	Compensated Density		-10
2	Bulk Density		3
15000	Line Tension		0
2.625	DGA	3.425 -0.25	Correction 0.25
LSPD			

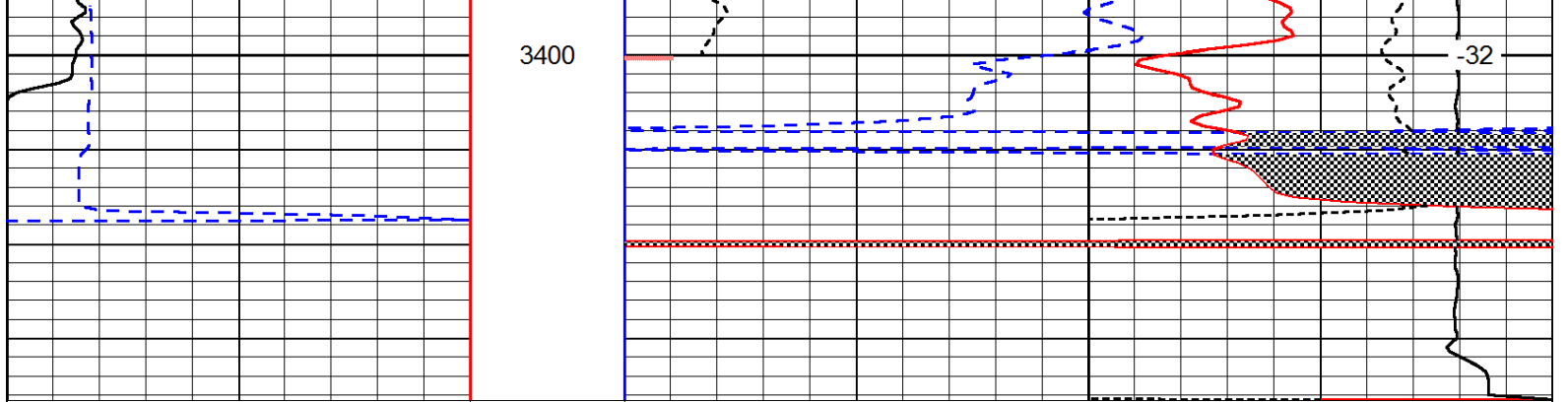












0	Gamma Ray	150
6	Caliper (GAPI)	16

30	Compensated Neutron (Limestone)			-10	
30	Compensated Density (Limestone)			-10	
2.625	DGA	3.425	-0.25	Correction	0.25
15000	Line Tension			0	

LSPD