

Company	CONTINENTAL OPERATING, CO		
Well	JEROME # 1		
Field	ROOKD		
County	ROOKD	State	KANSAS
Location:	2310' FSL & 4290' FEL		Other Services
APF #:			
SEC 18	TMP 9S	RGE 19W	Elevation
Permanent Datum	GROUND LEVEL		K B
Log Measured From	GROUND LEVEL		D.F.
Drilling Measured From	GROUND LEVEL		G.L.
Date	MAY 9, 2014		
Run Number	ONE		
Depth Driller	3844		
Bottom Logger	3836		
Bottom Logged Interval	3835		
Top Log Interval	2900		
Open Hole Size	OILWATER		
Type Fluid			
Density / Viscosity			
Max Recorded Temp.			
Estimated Cement Top			
Time Well Ready	PT:08		
Equipment on Bottom	HAYS		
Equipment Number			
Recorded By	JEREMY SCHNEIDER		
Missed By	KORY PFEIFER		

<<< Fold Here >>>

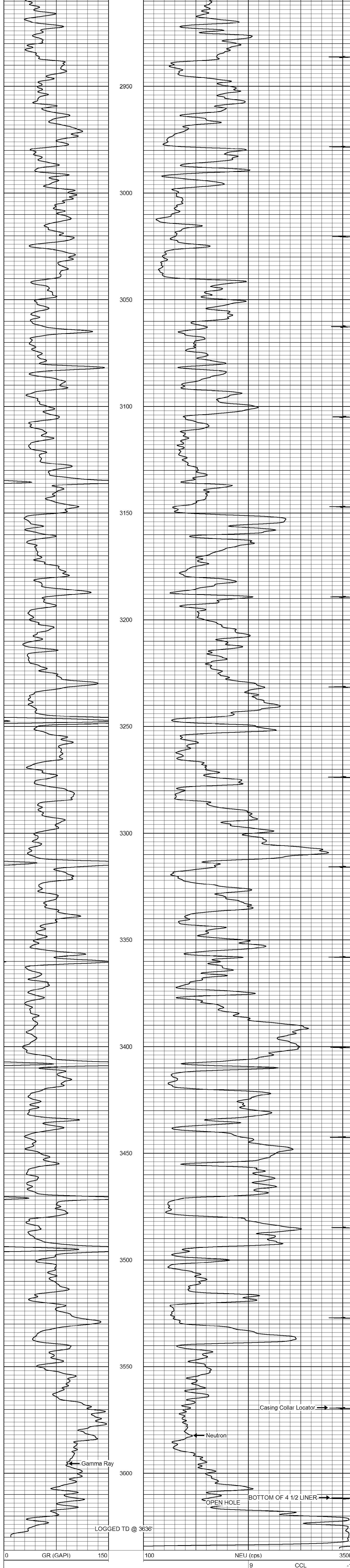
All interpretations are opinions based on inferences from electrical or other measurements and we cannot and do not guarantee the accuracy or correctness of any interpretation, and we shall not, except in the case of gross or willful negligence on our part, be liable or responsible for any loss, costs, damages, or expenses incurred or sustained by anyone resulting from any interpretation made by any of our officers, agents or employees. These interpretations are also subject to our general terms and conditions set out in our current Price Schedule.

Comments

THANKS FOR USING PERF-TECH WIRELINE  
785-623-3969  
ZURICH KS,  
WEST TO 7 RD, 3 1/2 NORTH,  
EAST INTO

**Perf-Tech** Wireline Services **MAIN PASS**

Database File: 05091408.db  
Dataset Pathname: pass3  
Presentation Format: gr-n-ccl  
Dataset Creation: Fri May 09 11:33:41 2014 by Log SCH 120126  
Charted by: Depth in Feet scaled 1:240



**Perf-Tech** Wireline Services **REPEAT SECTION**

Database File: 05091408.db  
Dataset Pathname: pass2  
Presentation Format: gr-n-ccl  
Dataset Creation: Fri May 09 11:27:31 2014 by Log SCH 120126  
Charted by: Depth in Feet scaled 1:240

