



**MIDWEST SURVEYS**  
 LOGGING - PERFORATING - CONSULTING SERVICES  
 P.O. Box 68, Ocala, Florida, KS 68084  
 913.735.2128

**GAMMA RAY / NEUTRON / CCL**

File No.

Company Laymon Oil II, LLC

Well Grisier No. 24-14

Field Owl Creek

County Woodson State Kansas

Location 1485' FSL & 2805' FEL  
SE-SE-N-E-S-W

Other Services Perforate

Sec. 5 Typ. 25s Rge. 16e Elevation 1033'

Permanent Datum Log Measured From Drilling Measured From

Date 10-08-2014

Run Number 1080.0

Depth Logger 1052.8

Bottom Logged Interval 1051.8

Top Log Interval 200.0

Fluid Level

Type Fluid Water

Density / Viscosity NA NA

Salinity - PPM Cl NA NA

Max. Recorded Temp NA NA

Estimated Cement Top 0.0

Equipment No. Location 107' Osawatimie

Recorded By Steve Manfred

Witnessed By Mike Laymon

BORE-HOLE RECORD

RUN No. BIT FROM TO SIZE WGT. FROM TO

One 12.25" 0.0 40.0 8.525" 24.0# 0.0 40.0

Two 6.00" 40.0 1080.0 2.875" 6.5# 0.0 1055.0

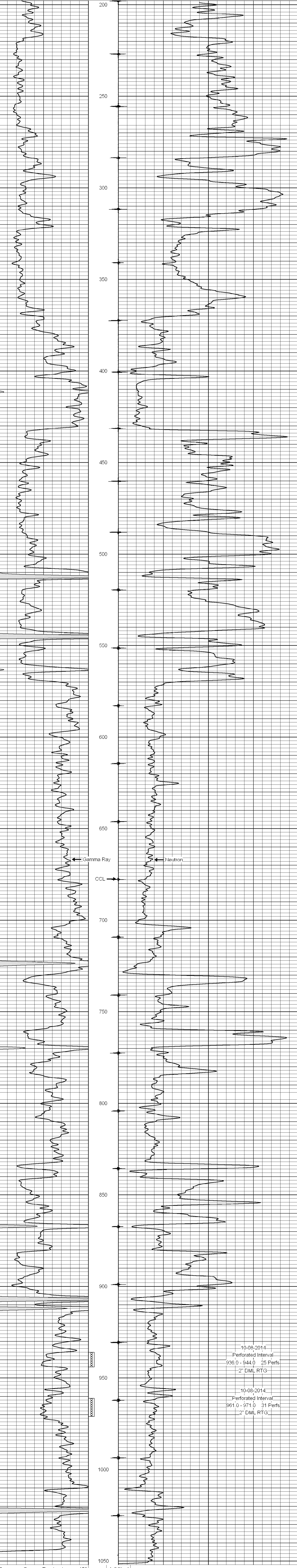
<<< Fold Here >>>

All interpretations are opinions based on inferences from electrical or other measurements and we cannot and do not guarantee the accuracy or correctness of any interpretation, and we shall not, except in the case of gross or willful negligence on our part, be liable or responsible for any loss, costs, damages, or expenses incurred or sustained by anyone resulting from any interpretation made by any of our officers, agents or employees. These interpretations are also subject to our general terms and conditions set out in our current Price Schedule.

Comments

Drilling Contractor :  
Laymon Oil II LLC

Database File: grisier 24-14.db  
 Dataset Pathname: pass1  
 Presentation Format: gr-n-ccl  
 Dataset Creation: Wed Oct 08 09:48:34 2014 by Log SCH 111116  
 Charted by: Depth in Feet scaled 1:240



Gamma Ray (cps) scale: 0, 150  
 Neutron (cps) scale: 10, 2100