



MIDWEST SURVEYS
 LOGGING - PERFORATING - CONSULTING SERVICES
 P. O. Box 68, Osawatomie, KS 66064
 913 / 755 - 2128

GAMMA RAY / NEUTRON / CCL

File No.

Company: Gregory & Zachary Jackman

Well: Boots No. 2-J1

Field: Colony West

County: Anderson

State: Kansas

Location: 2160' FSL & 3600' FEL
SE-NW-NE-SW

Other Services: Perforate

Sec. 5 Type: 23S Rge: 18E

Permament Datum: GL Elevation: 1051'

Log Measured From: GL

Drilling Measured From: GL

Date: 06-03-2014

Run Number: One

Depth Driller: 992.0

Depth Logger: 941.0

Bottom Logged Interval: 940.0

Top Log Interval: 20.0

Fluid Level: Full

Type Fluid: Water

Density / Viscosity: NA

Salinity - PPM Cl: NA

Max. Recorded Temp: NA

Equipment No.: 107

Estimated Cement Top: 0.0

Recorded By: Steve Windisch

Witnessed By: Greg Jackman

BORE-HOLE RECORD		CASING RECORD	
Run No.	BIT	TO	FROM
One	11.00"	40.0	0.0
Two	5.875"	992.0	2.875"
			17.0#
			6.5#
			0.0
			948.45

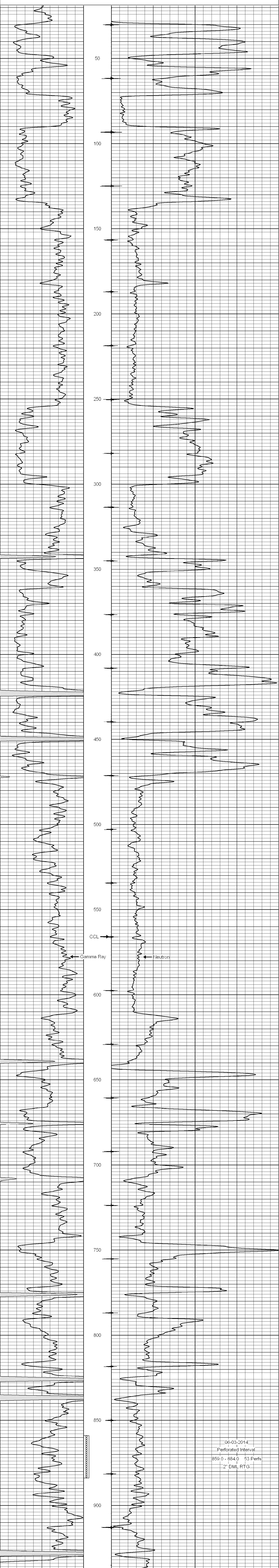
<<< Fold Here >>>

All interpretations are opinions based on inferences from electrical or other measurements and we cannot and do not guarantee the accuracy or correctness of any interpretation, and we shall not, except in the case of gross or willful negligence on our part, be liable or responsible for any loss, costs, damages, or expenses incurred or sustained by anyone resulting from any interpretation made by any of our officers, agents or employees. These interpretations are also subject to our general terms and conditions set out in our current Price Schedule.

Comments

Drilling Contractor :
McGown Drilling, Inc.

Database File: boots 2ji.db
 Dataset Pathname: pass1
 Presentation Format: gr-n-ccl
 Dataset Creation: Tue Jun 03 12:19:19 2014 by Log SCH 111116
 Charted by: Depth in Feet scaled 1:240



06-03-2014
 Perforated Interval
 859.0 - 884.0 53 Perfs
 2" DML RTG

