



**COMPLETION
& PRODUCTION
SERVICES CO.**

**MICRO
LOG**

Company GREAT PLAINS ENERGY, INC.
Well SAUVAGE #10
Field SWEDE HOLLOW
County DECATUR
State KANSAS

Company GREAT PLAINS ENERGY, INC.
Well SAUVAGE #10
Field SWEDE HOLLOW
County DECATUR State KANSAS

Location: API # : 15-039-21197-0000
1400' FNL & 1290' FEL
SEC 35 TWP 4S RGE 30W
Permanent Datum GROUND LEVEL Elevation 2845
Log Measured From KELLY BUSHING 5' A.G.L.
Drilling Measured From KELLY BUSHING
Other Services
CDL/CNL
DIL
Elevation
K.B. 2850
D.F. 2848
G.L. 2845

Date	4/22/14
Run Number	ONE
Depth Driller	4295
Depth Logger	4296
Bottom Logged Interval	4294
Top Log Interval	3400
Casing Driller	8 5/8"@260'
Casing Logger	260
Bit Size	7 7/8"
Type Fluid in Hole	CHEMICAL MUD
Density / Viscosity	9.5/70
pH / Fluid Loss	9.5/7.2
Source of Sample	FLOWLINE
Rim @ Meas. Temp	.950@70F
Rmf @ Meas. Temp	.713@70F
Rmc @ Meas. Temp	1.14@70F
Source of Rmf / Rmc	MEASUREMENT
Rim @ BHT	.559@119F
Time Circulation Stopped	2 HOURS
Time Logger on Bottom	11:45 P.M.
Maximum Recorded Temperature	119F
Equipment Number	4854
Location	HAYS, KANSAS
Recorded By	JEFF LUEBBERS
Witnessed By	RICHARD BELL

<<< Fold Here >>>

All interpretations are opinions based on inferences from electrical or other measurements and we cannot and do not guarantee the accuracy or correctness of any interpretation, and we shall not, except in the case of gross or willful negligence on our part, be liable or responsible for any loss, costs, damages, or expenses incurred or sustained by anyone resulting from any interpretation made by any of our officers, agents or employees. These interpretations are also subject to our general terms and conditions set out in our current Price Schedule.

Comments

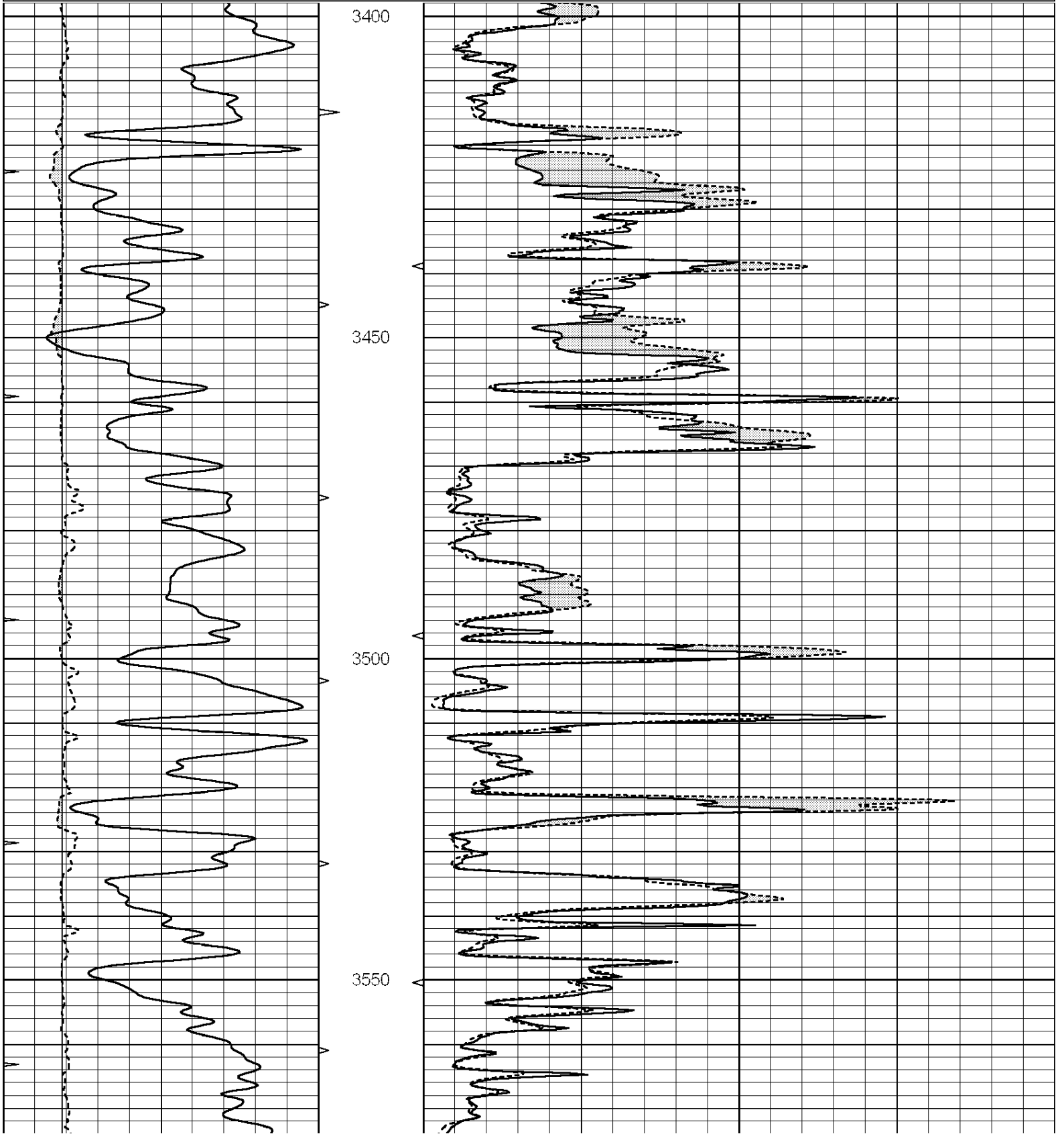
THANK YOU FOR USING "NABORS" HAYS, KANSAS (785) 628-6395
DIRECTIONS
SELDON, KS., N. ON HWY 23 TO "RD. 10", 6W., 1S., 1/2W., S. INTO

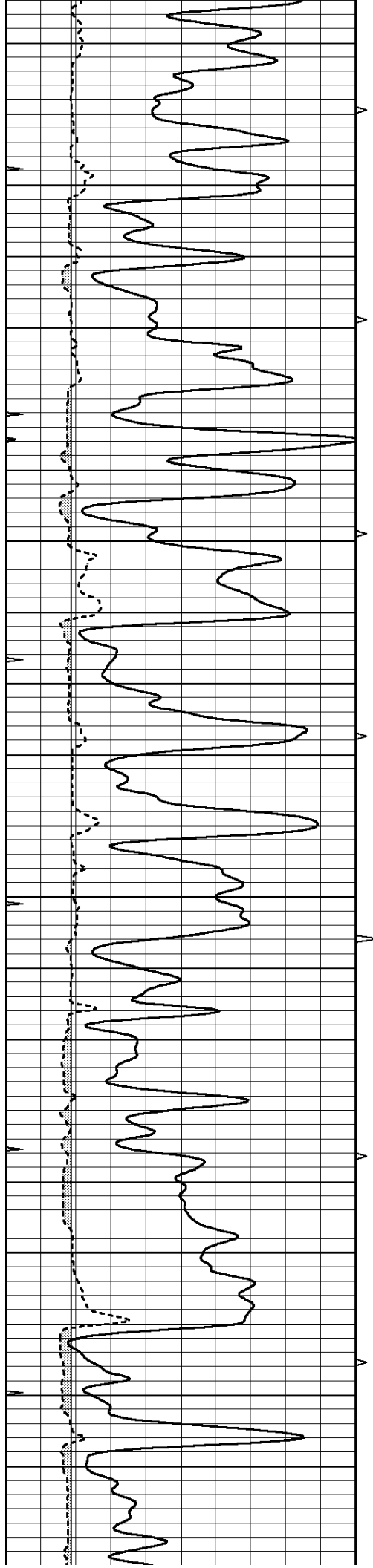


MAIN SECTION

Database File: 23815ddn.db
 Dataset Pathname: pass4.1
 Presentation Format: micro
 Dataset Creation: Wed Apr 23 00:32:51 2014 by Calc SOC 120430
 Charted by: Depth in Feet scaled 1:240

0	GAMMA RAY (GAPI)	150	ABHV	0	MEL1.5 (Ohm-m)	40
6	CALIPER (in)	16	10 (ft3)	0	MEL2.0 (Ohm-m)	40
0	MINMK	20	TBHV			
			0 (ft3)	10		



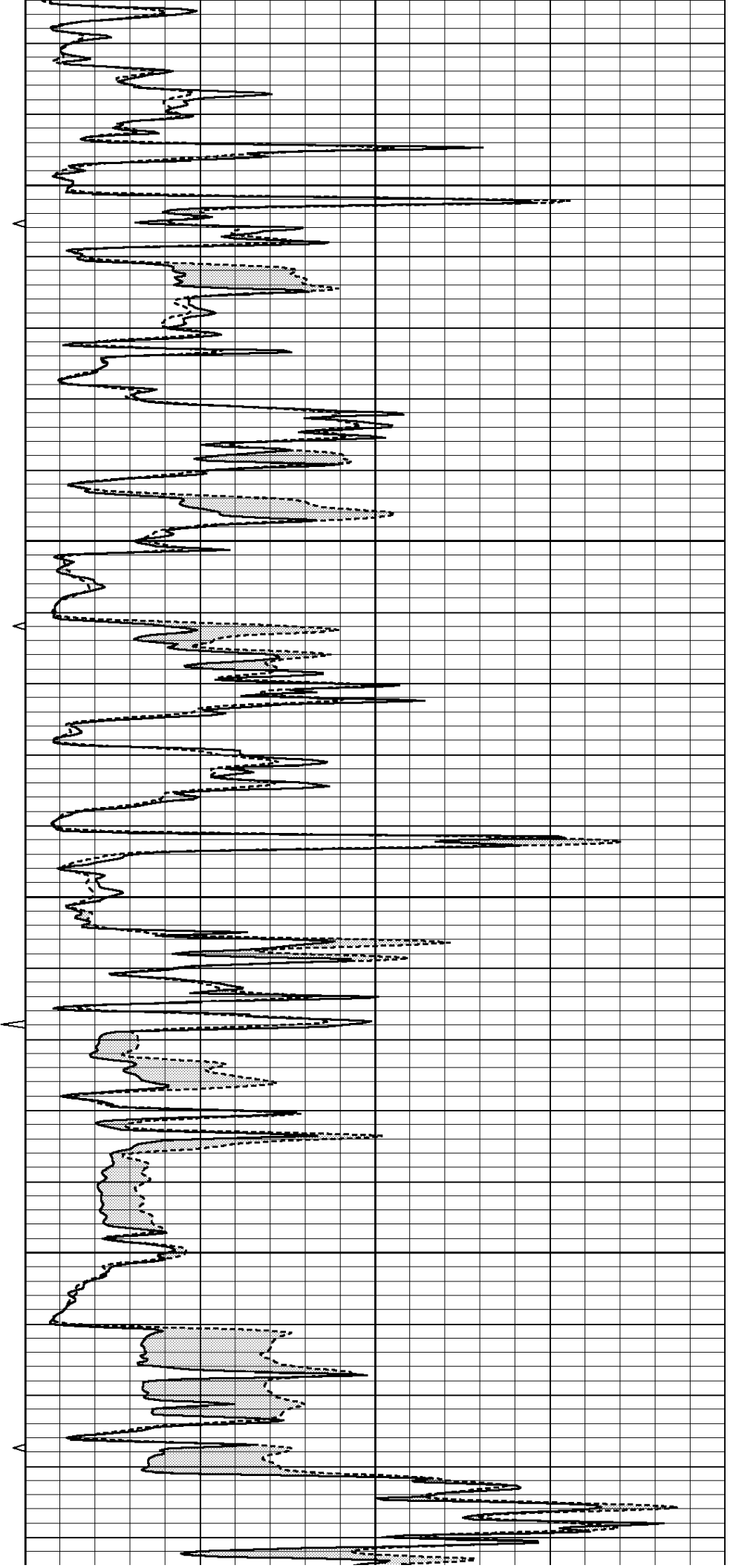


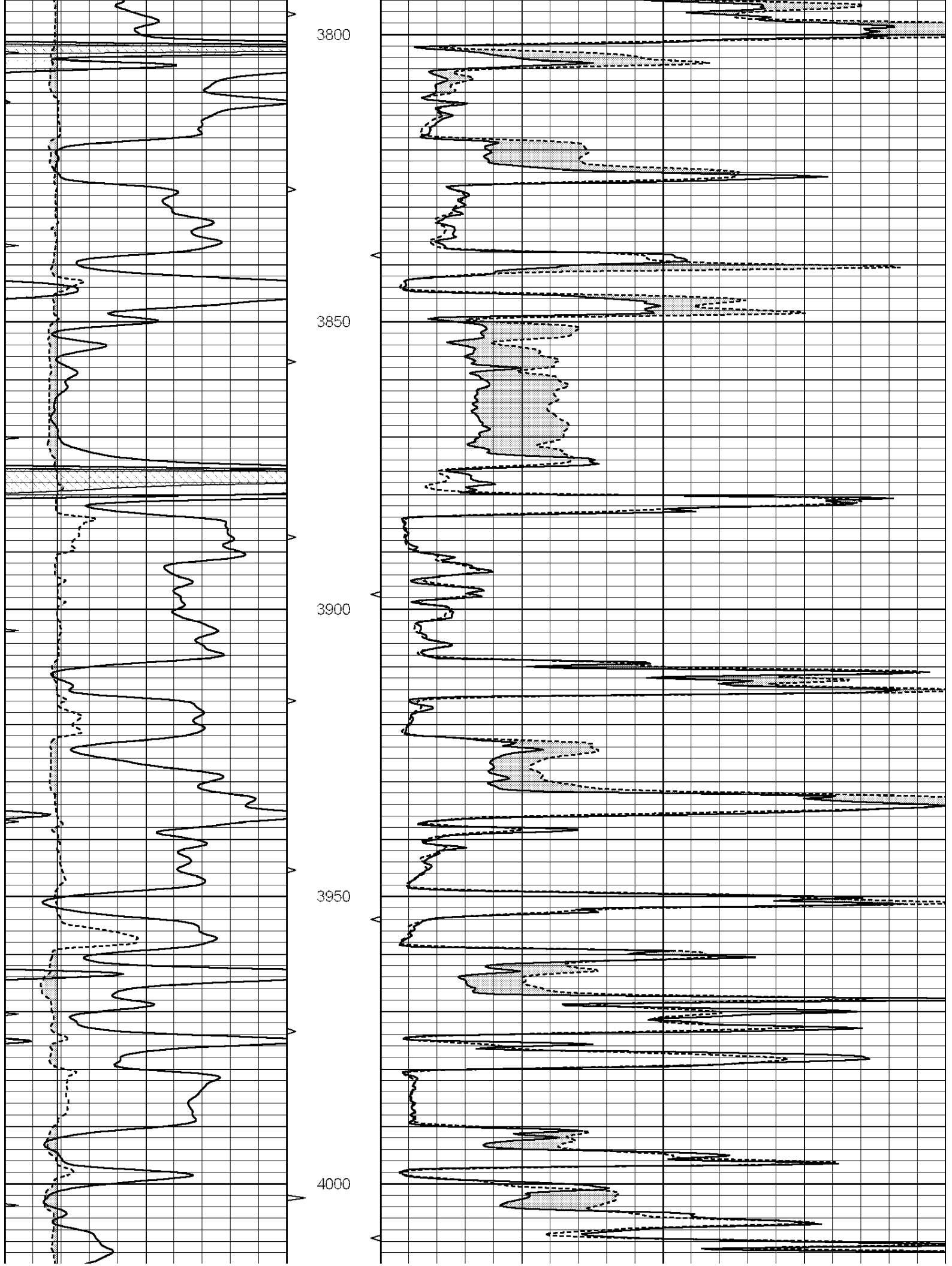
3600

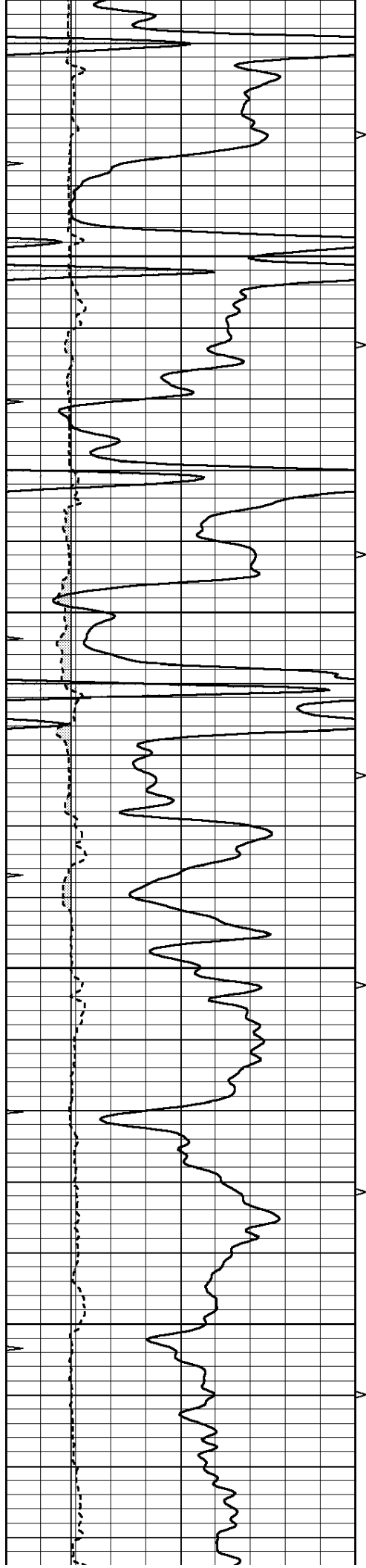
3650

3700

3750





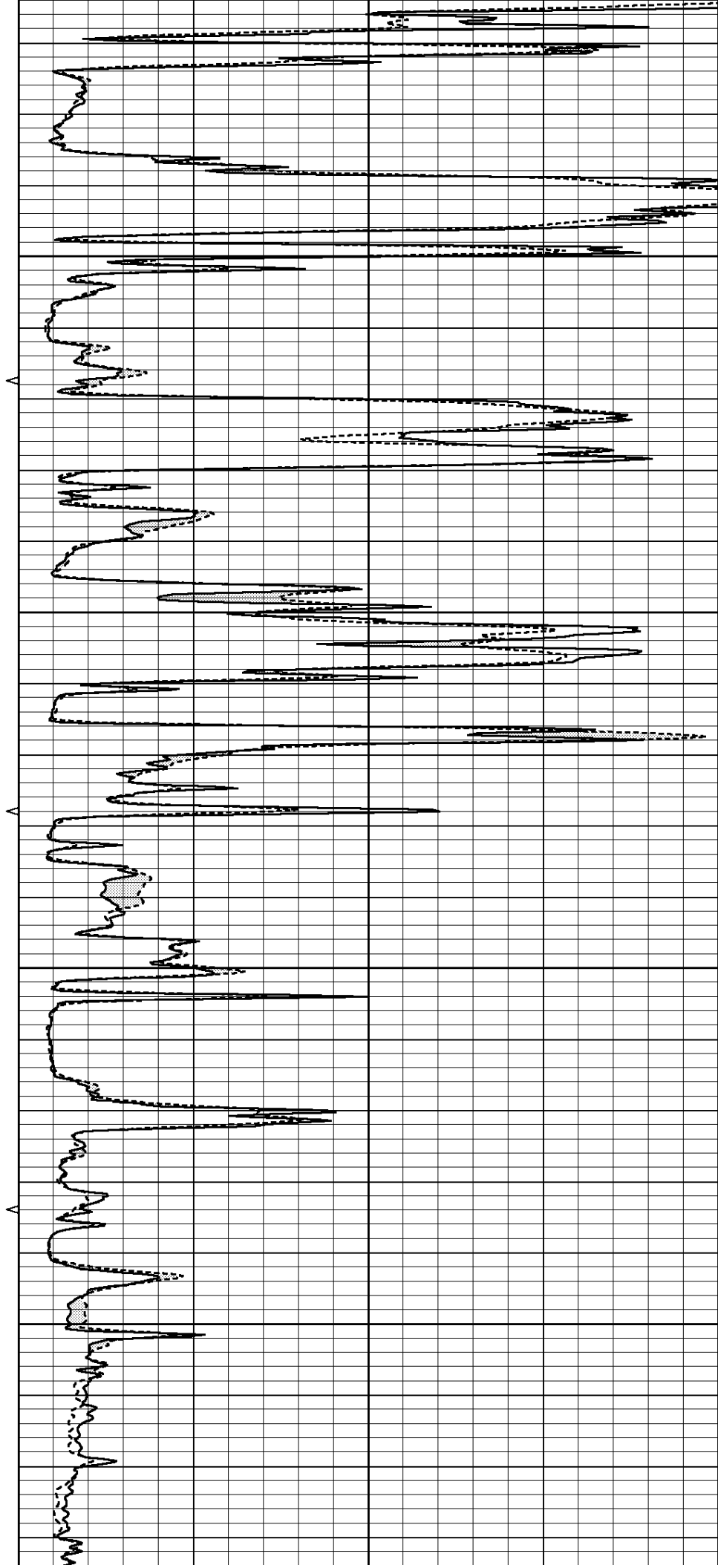


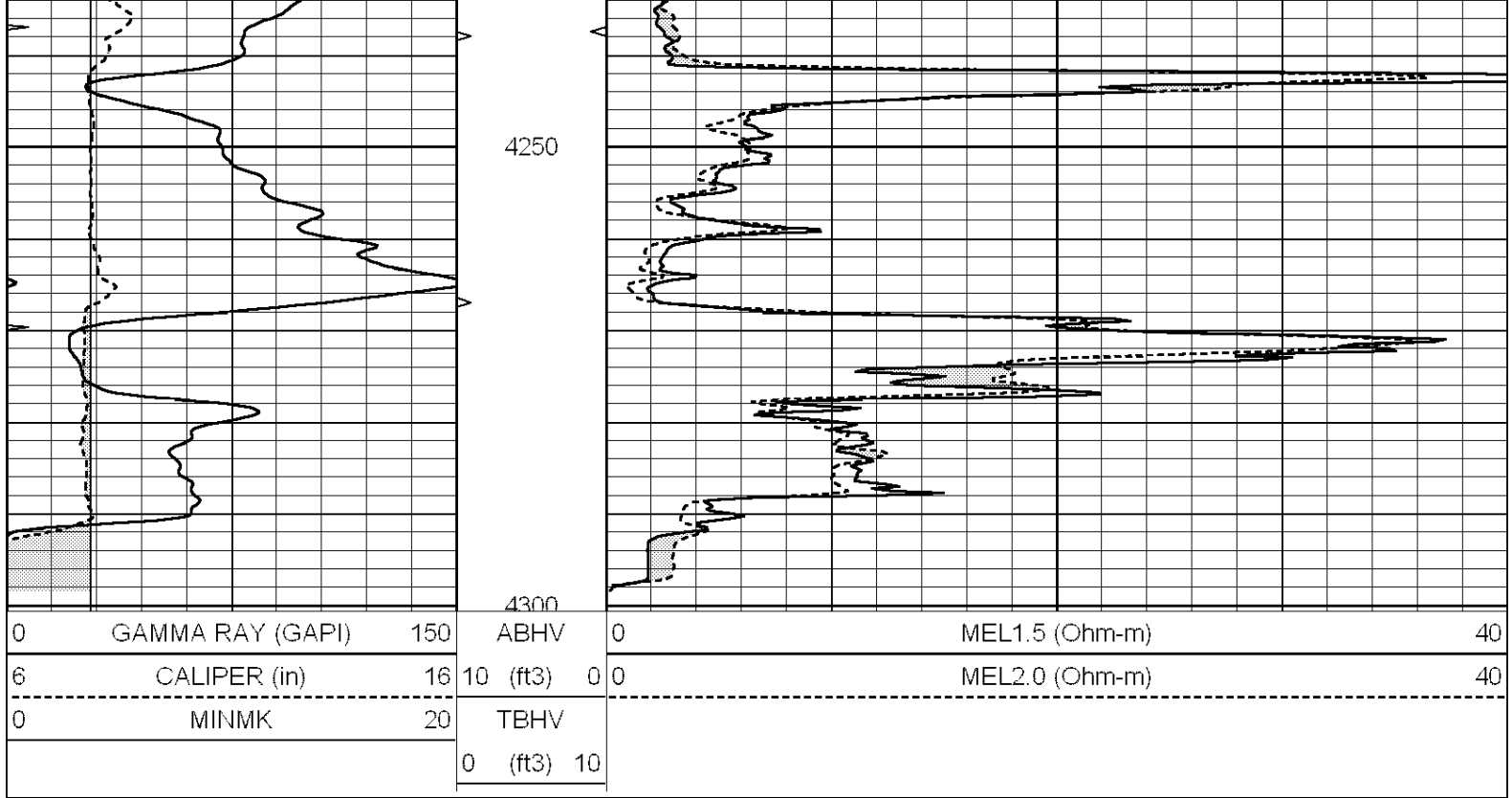
4050

4100

4150

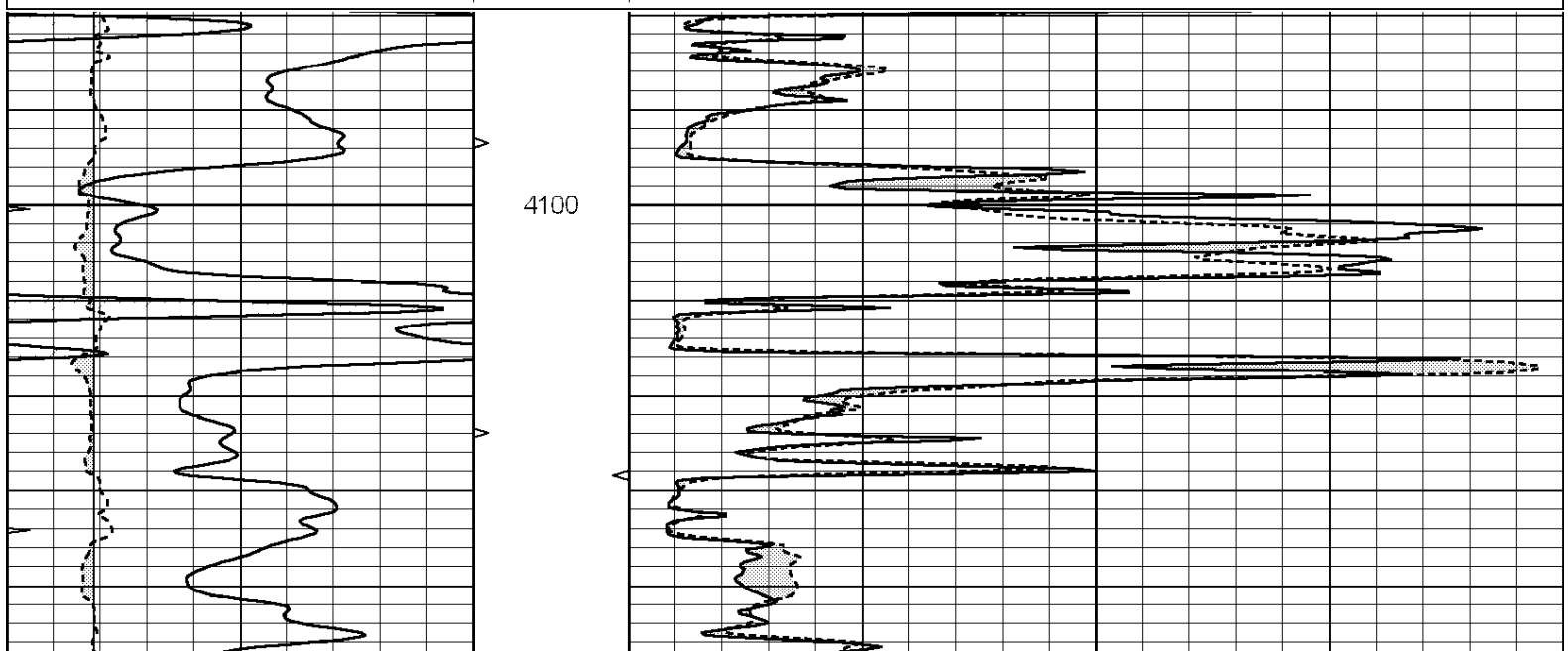
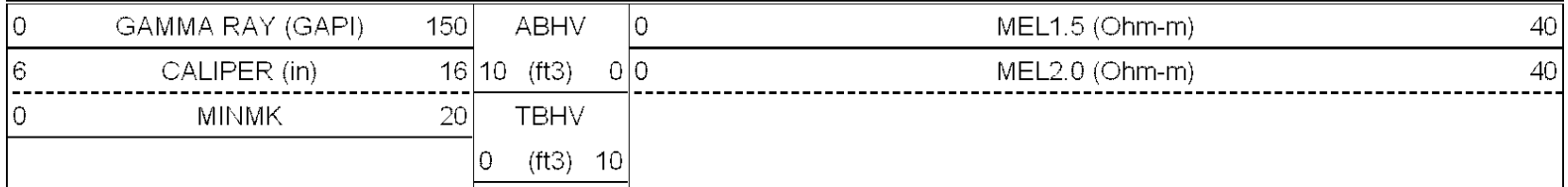
4200

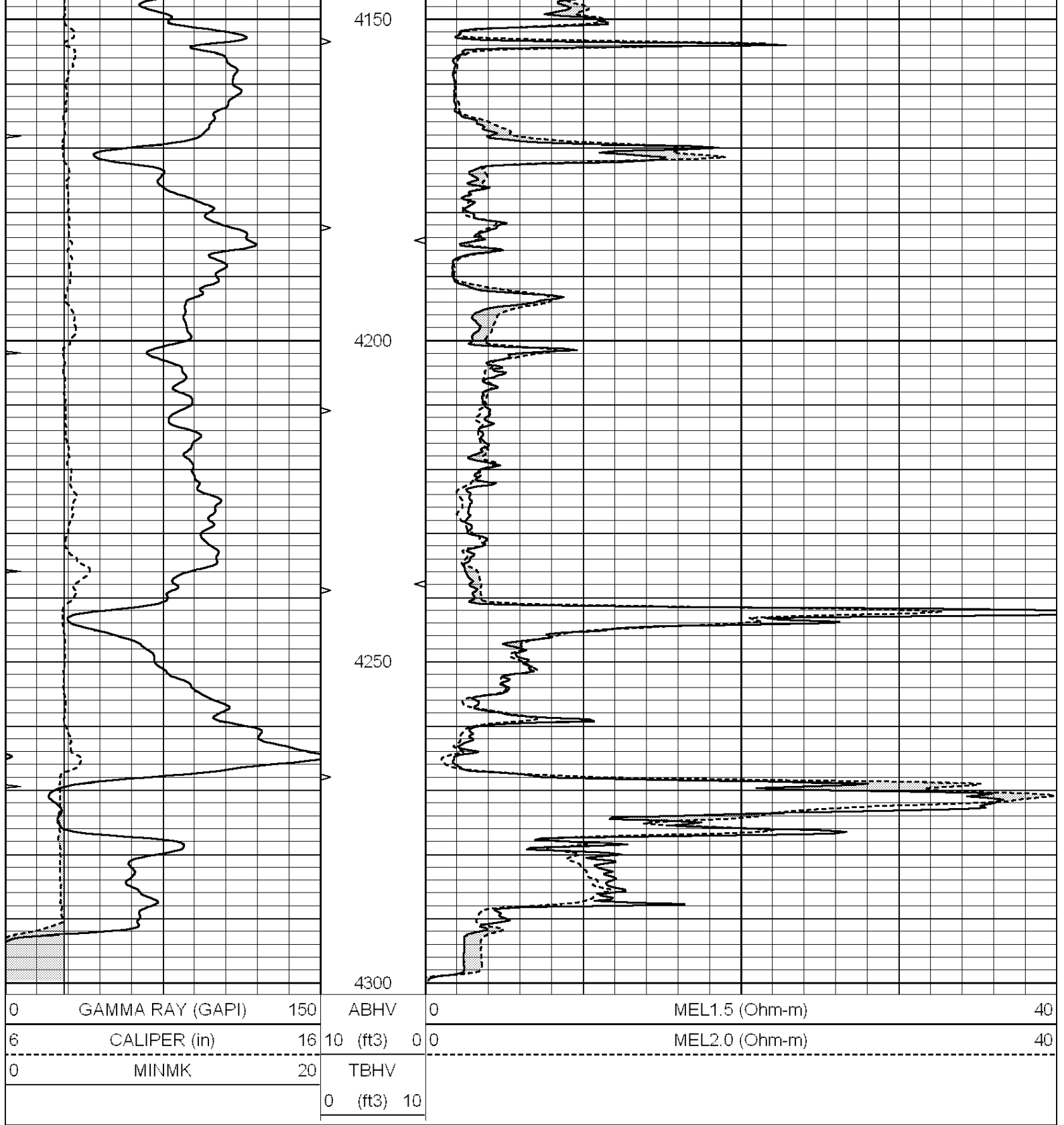




REPEAT SECTION

Database File: 23815ddn.db
 Dataset Pathname: pass3.1
 Presentation Format: micro
 Dataset Creation: Wed Apr 23 00:42:01 2014 by Calc SOC 120430
 Charted by: Depth in Feet scaled 1:240





Calibration Report

Database File: 23815ddn.db
 Dataset Pathname: pass4.1
 Dataset Creation: Wed Apr 23 00:32:51 2014 by Calc SOC 120430

MICRO Calibration Report

Serial Number: 070910
 Tool Model: ProbeN
 Performed: Tue Apr 22 23:55:02 2014

Caliper Calibration: Gain=4.208 Offset=1.270

	Low Cal	High Cal
References	7.800	15.000
Readings	1.552	3.263
1.5" Calibration:	Gain=20.000	Offset=0.200
	Low Cal	High Cal
References	0.000	20.000
Readings	0.001	1.229
2" Calibration:	Gain=52.000	Offset=-1.200
	Low Cal	High Cal
References	0.000	20.000
Readings	0.004	1.057
Gamma Ray Calibration Report		
Serial Number:	070559	
Tool Model:	OPEN_GR	
Performed:	Mon Mar 24 02:01:13 2014	
Calibrator Value:	1.0	GAPI
Background Reading:	0.0	cps
Calibrator Reading:	1.0	cps
Sensitivity:	0.2400	GAPI/cps