



**COMPLETION
& PRODUCTION
SERVICES CO.**

**DUAL INDUCTION
LOG**

Company: GREAT PLAINS ENERGY, INC.
Well: SAUVAGE #10
Field: SWEDE HOLLOW
County: DECATUR
State: KANSAS

Company: GREAT PLAINS ENERGY, INC.
Well: SAUVAGE #10
Field: SWEDE HOLLOW
County: DECATUR
State: KANSAS

Location: API #: 15-039-21197-0000
1400' FNL & 1290' FEL
SEC 35 TWP 4S RGE 30W
Permanent Datum: GROUND LEVEL Elevation: 2845
Log Measured From: KELLY BUSHING 5' A.G.L.
Drilling Measured From: KELLY BUSHING
Other Services: CDL/CNL MEL
Elevation: K.B. 2850, D.F. 2848, G.L. 2845

Date	4/22/14
Run Number	TWO
Depth Driller	4295
Depth Logger	4296
Bottom Logged Interval	4294
Top Log Interval	00
Casing Driller	8 5/8"@260'
Casing Logger	260
Bit Size	7 7/8"
Type Fluid in Hole	CHEMICAL MUD
Density / Viscosity	9.5/70
pH / Fluid Loss	9.5/7.2
Source of Sample	FLOWLINE
Rim @ Meas. Temp	.950@70F
Rmt @ Meas. Temp	.713@70F
Rmc @ Meas. Temp	1.14@70F
Source of Rmf / Rmc	MEASUREMENT
Rim @ BHT	.559@119F
Time Circulation Stopped	3.5 HOURS
Time Logger on Bottom	11:45 P.M.
Maximum Recorded Temperature	119F
Equipment Number	4854
Location	HAYS, KANSAS
Recorded By	JEFF LUEBBERS
Witnessed By	RICHARD BELL

<<< Fold Here >>>

All interpretations are opinions based on inferences from electrical or other measurements and we cannot and do not guarantee the accuracy or correctness of any interpretation, and we shall not, except in the case of gross or willful negligence on our part, be liable or responsible for any loss, costs, damages, or expenses incurred or sustained by anyone resulting from any interpretation made by any of our officers, agents or employees. These interpretations are also subject to our general terms and conditions set out in our current Price Schedule.

Comments

THANK YOU FOR USING "NABORS" HAYS, KANSAS (785) 628-6395
DIRECTIONS
SELDON, KS., N. ON HWY 23 TO "RD. 10", 6W., 1S., 1/2W., S. INTO

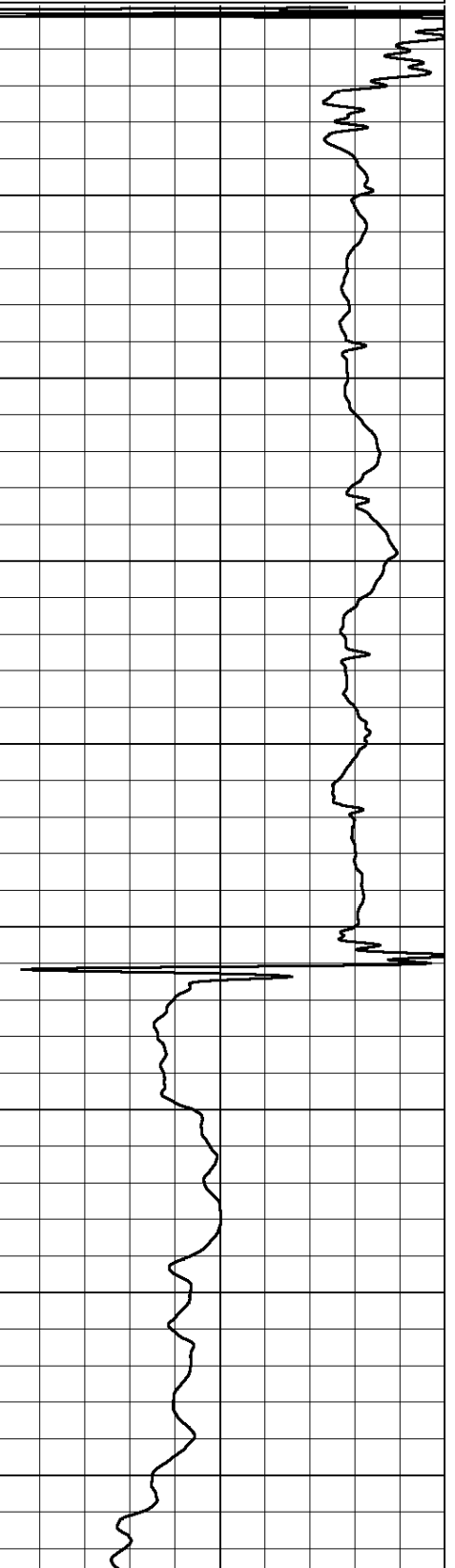
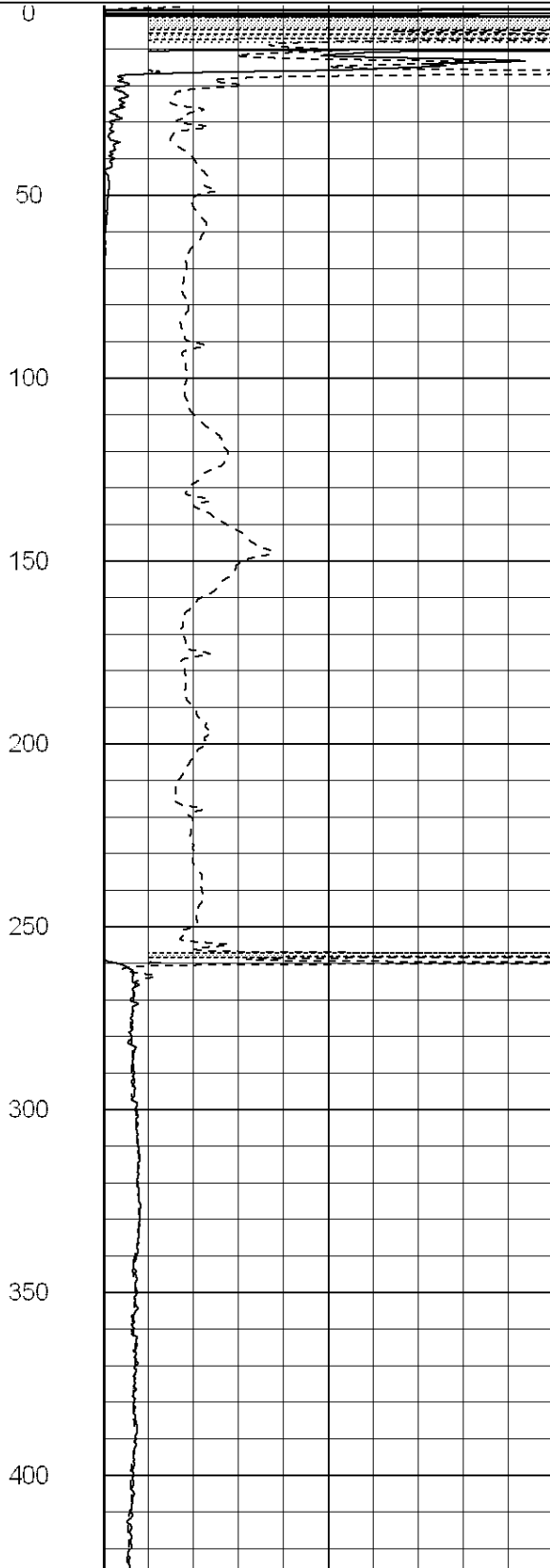
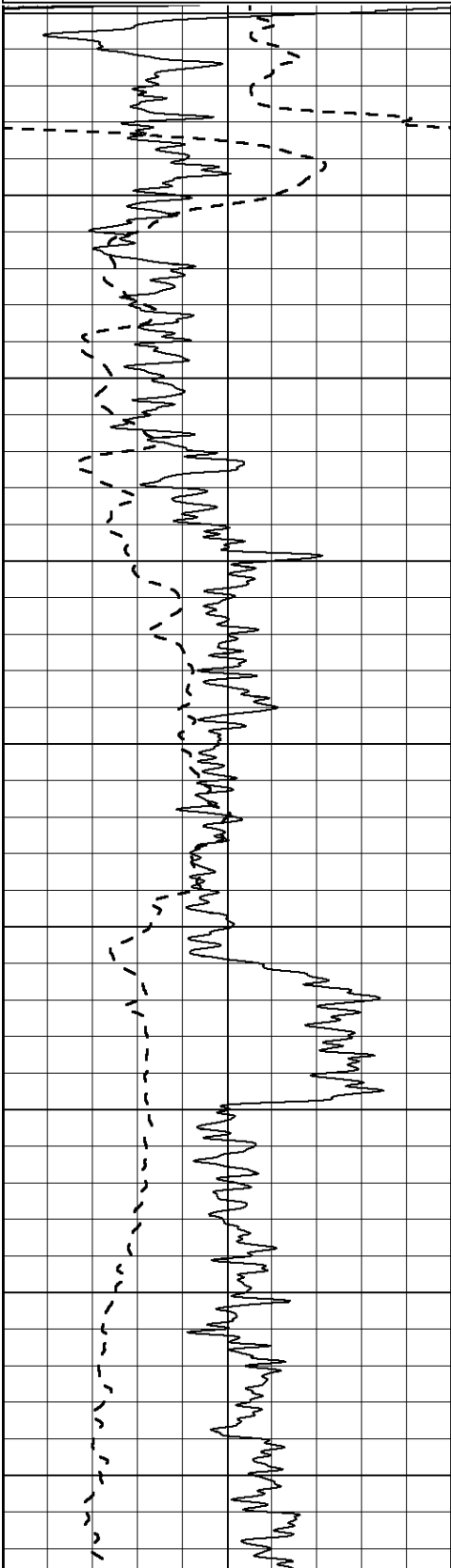
Database File: 23815ddn.db
 Dataset Pathname: pass7.3
 Presentation Format: dil2
 Dataset Creation: Wed Apr 23 03:03:36 2014 by Calc SOC 120430
 Charted by: Depth in Feet scaled 1:600

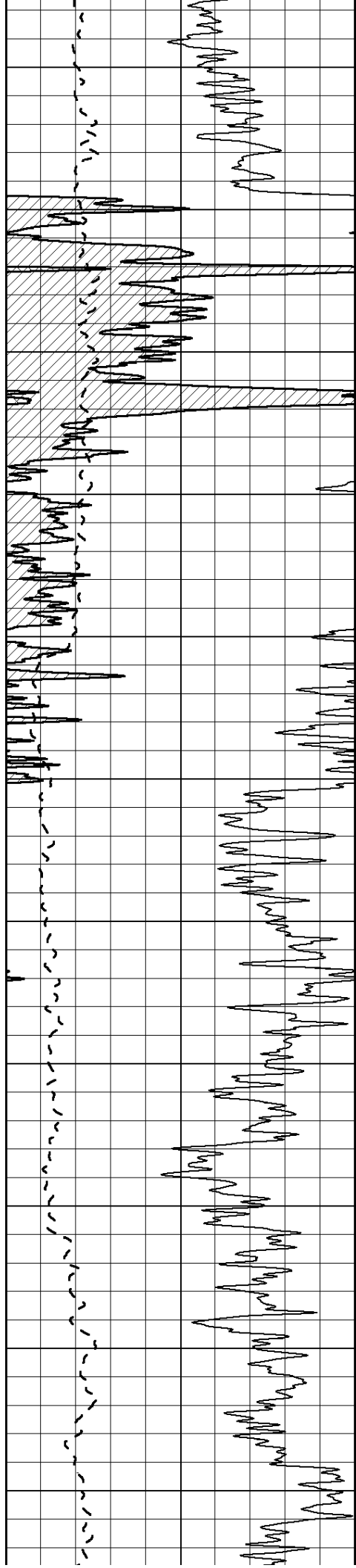
0	Gamma Ray (GAPI)	150
-100	SP (mV)	100

0	RLL3 (Ohm-m)	50
0	RILD (Ohm-m)	50

1000	CILD (mmho/m)	0
------	---------------	---

50	RILD X10 (Ohm-m)	500
50	RLL3 X10 (Ohm-m)	500





450

500

550

600

650

700

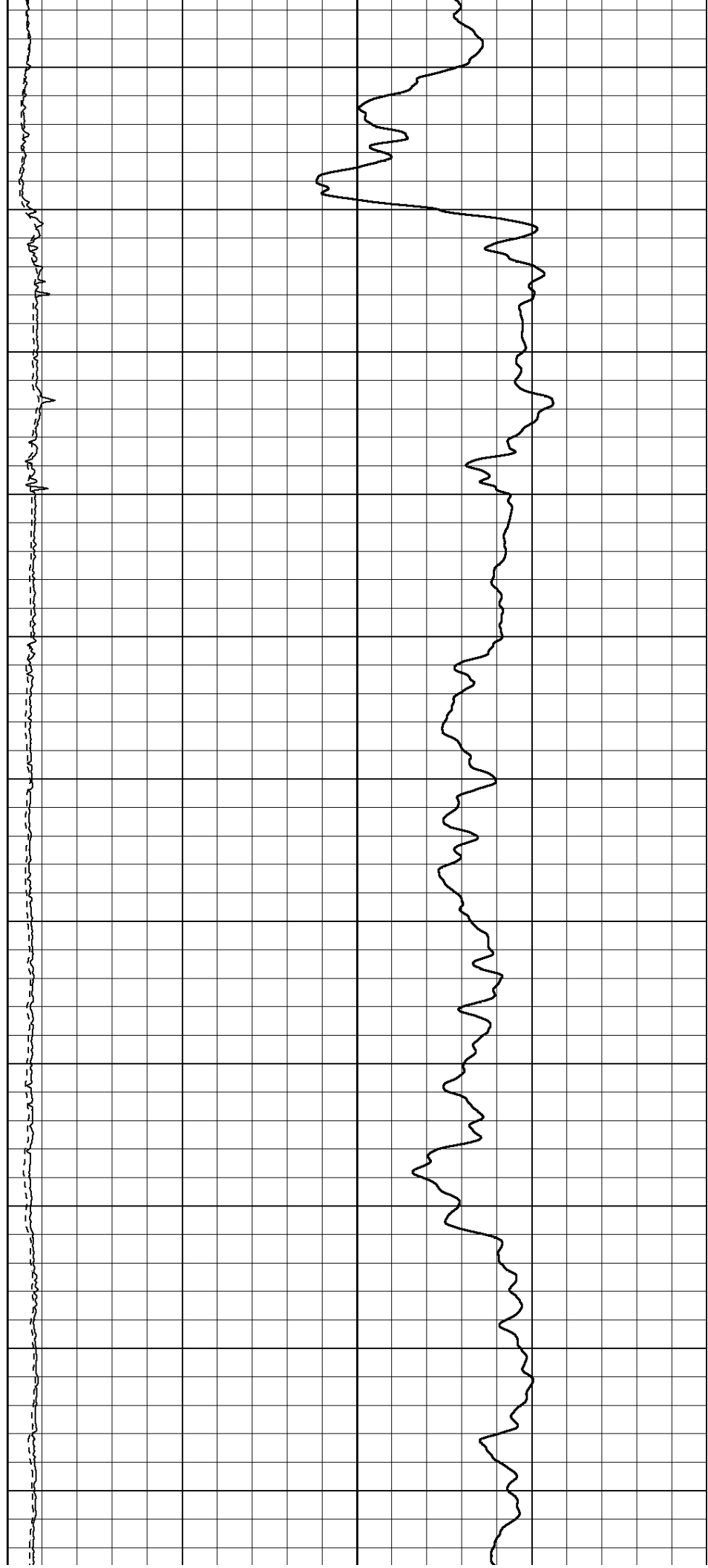
750

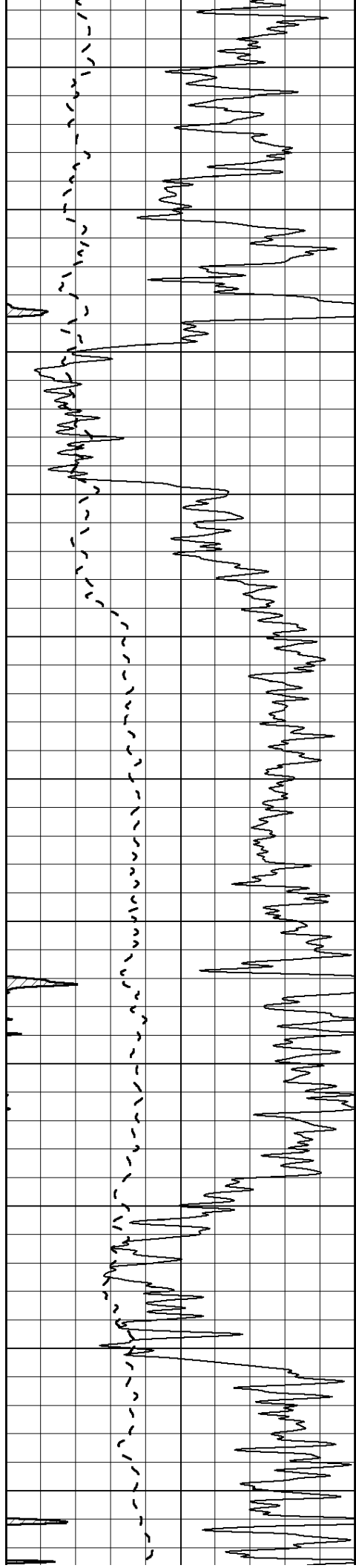
800

850

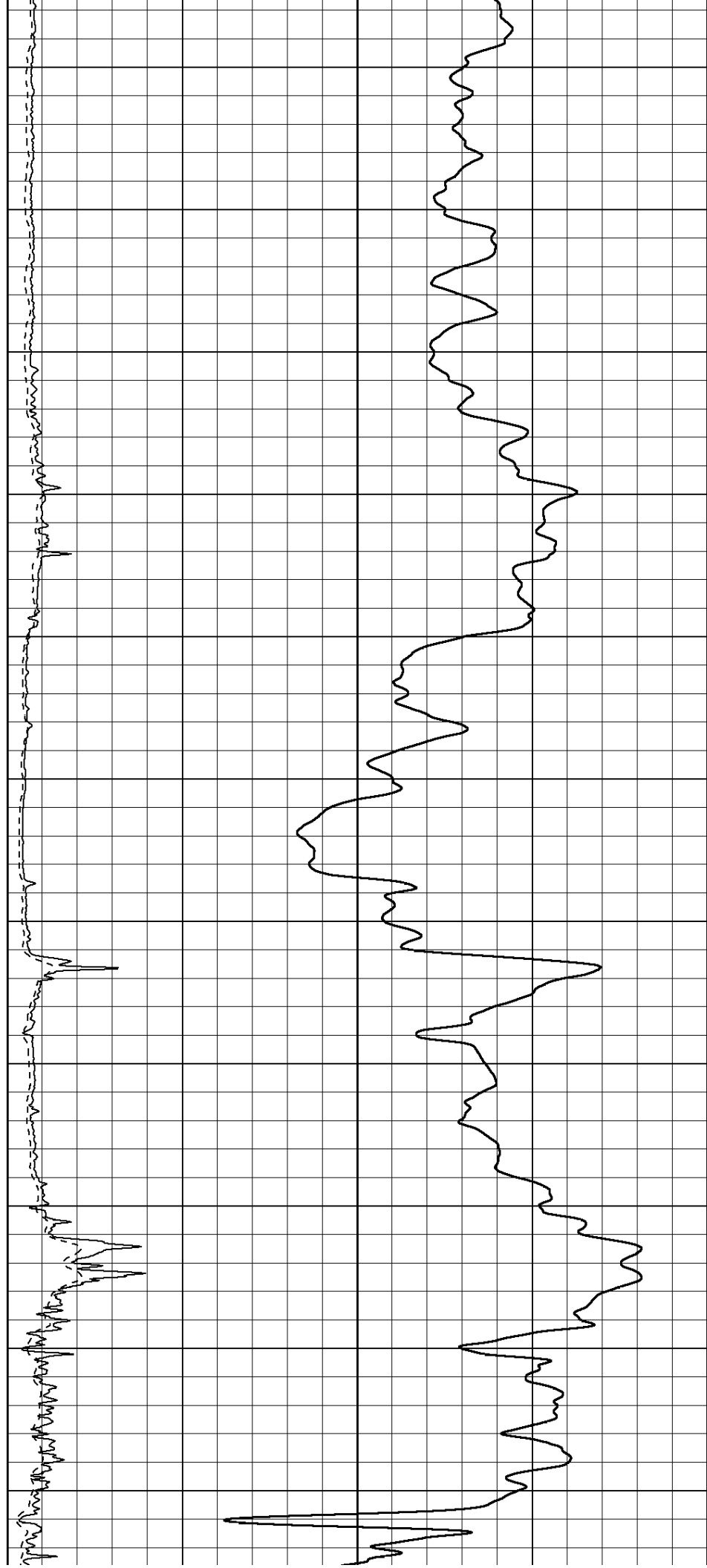
900

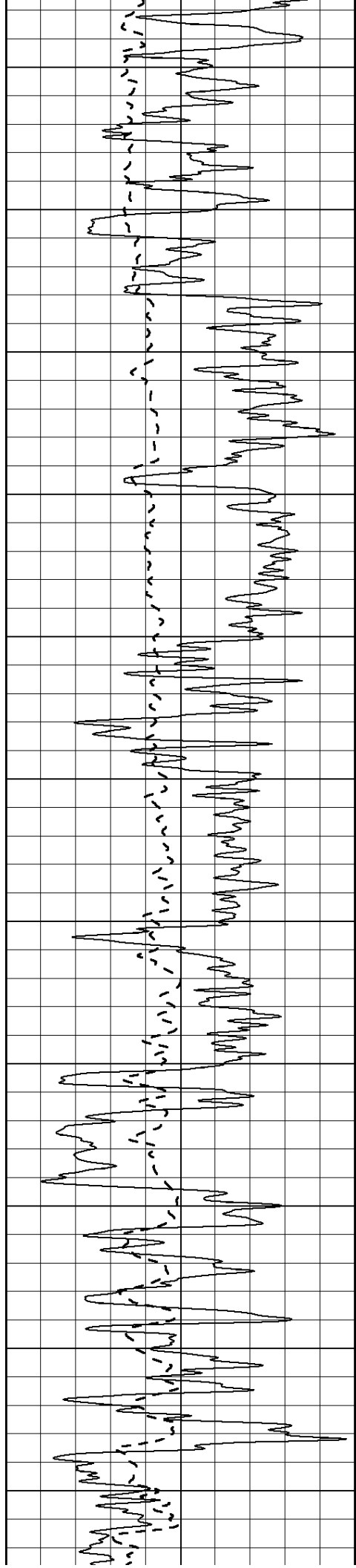
950





1000
1050
1100
1150
1200
1250
1300
1350
1400
1450
1500





1550

1600

1650

1700

1750

1800

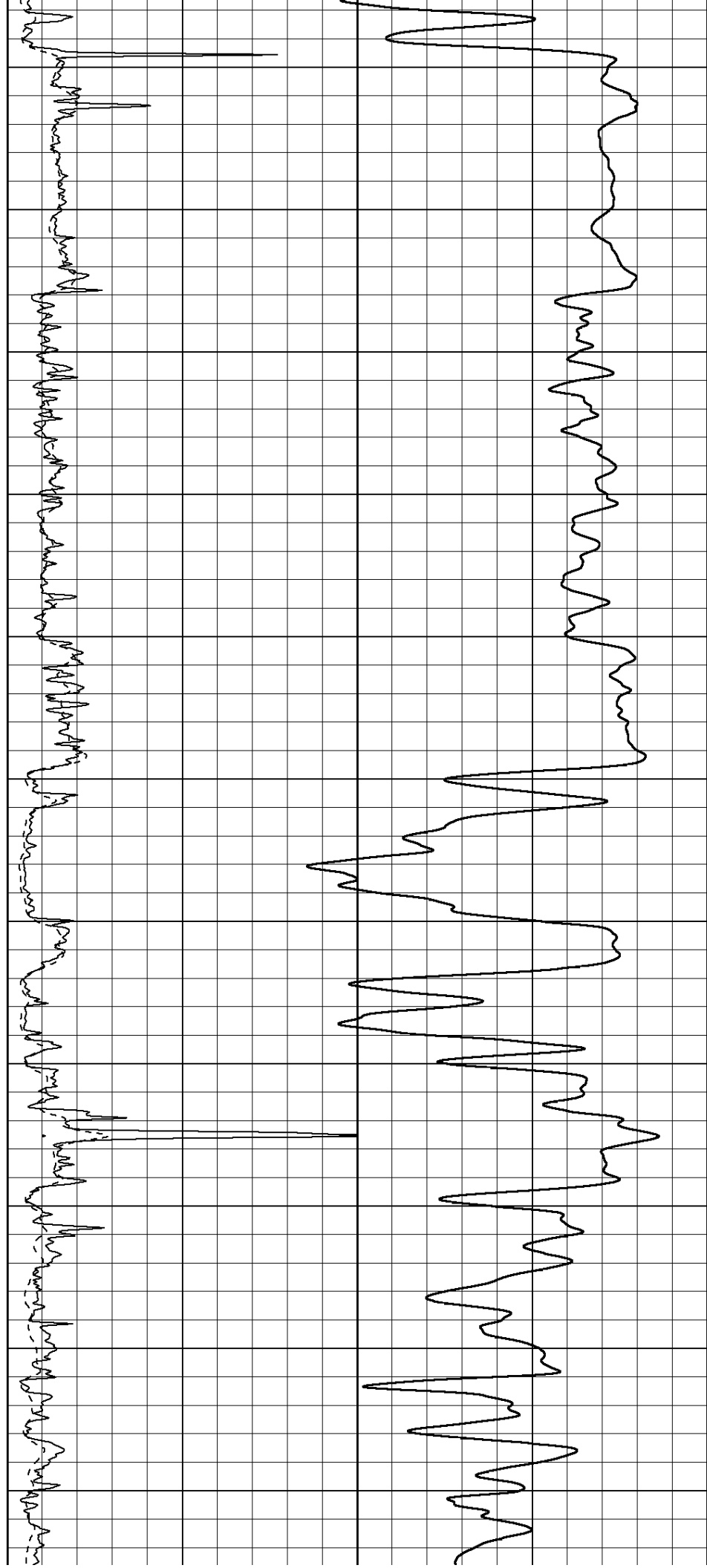
1850

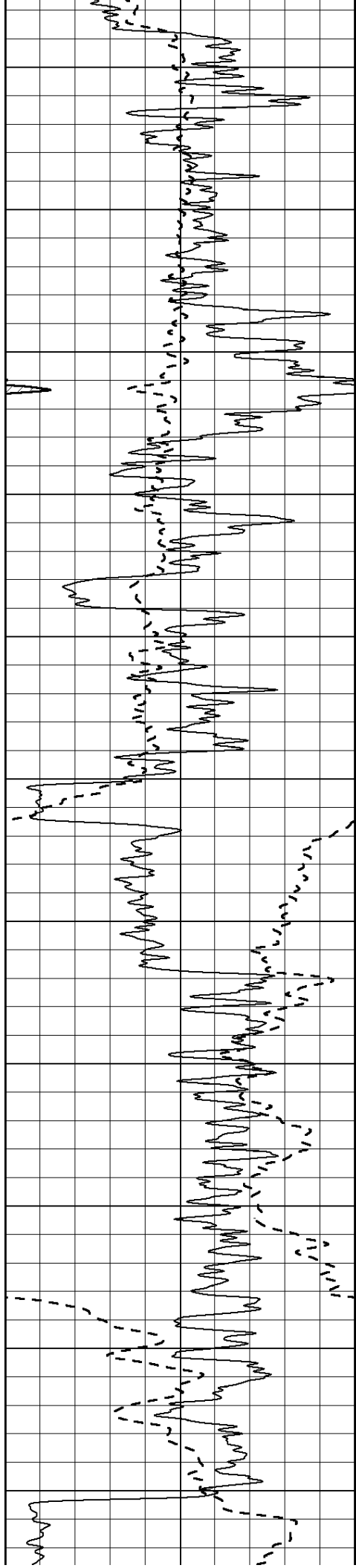
1900

1950

2000

2050





2100

2150

2200

2250

2300

2350

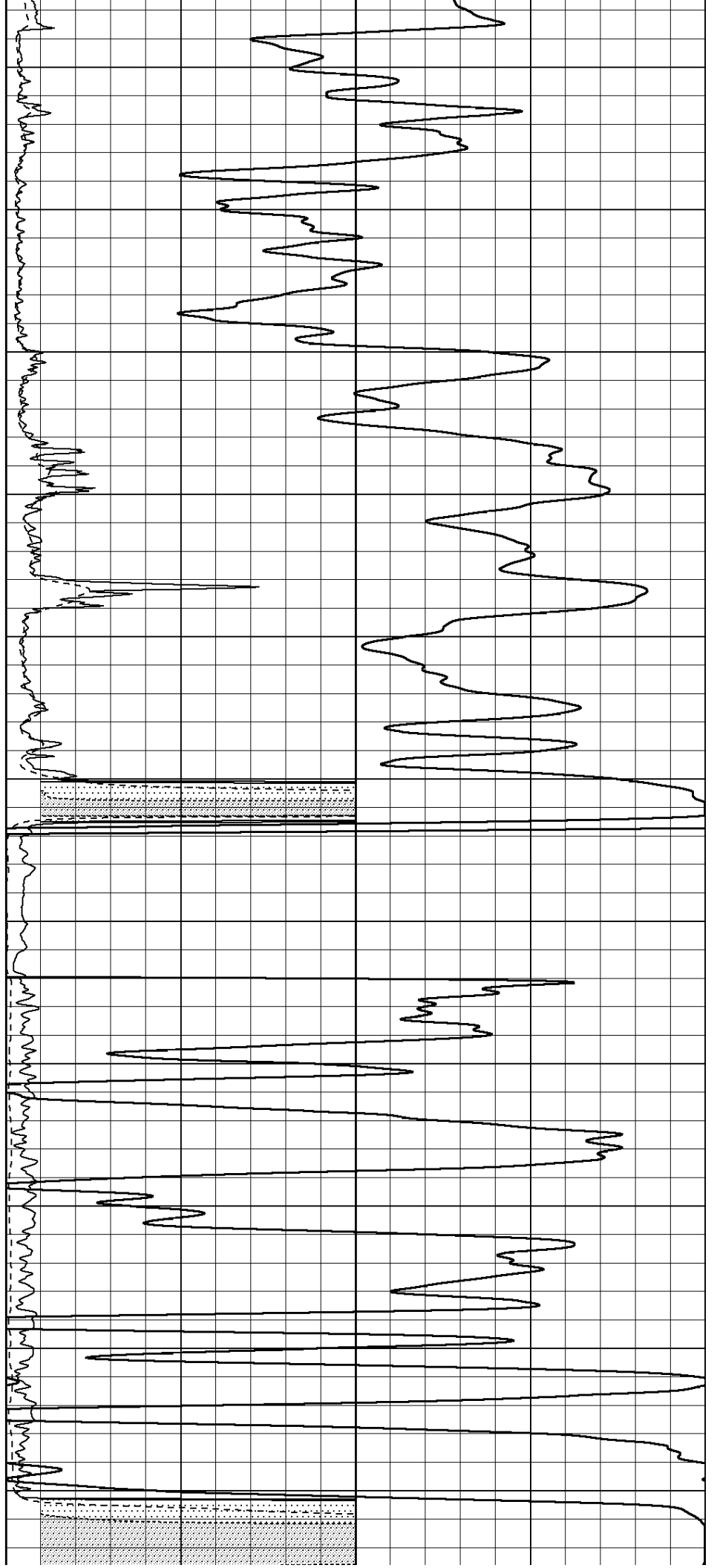
2400

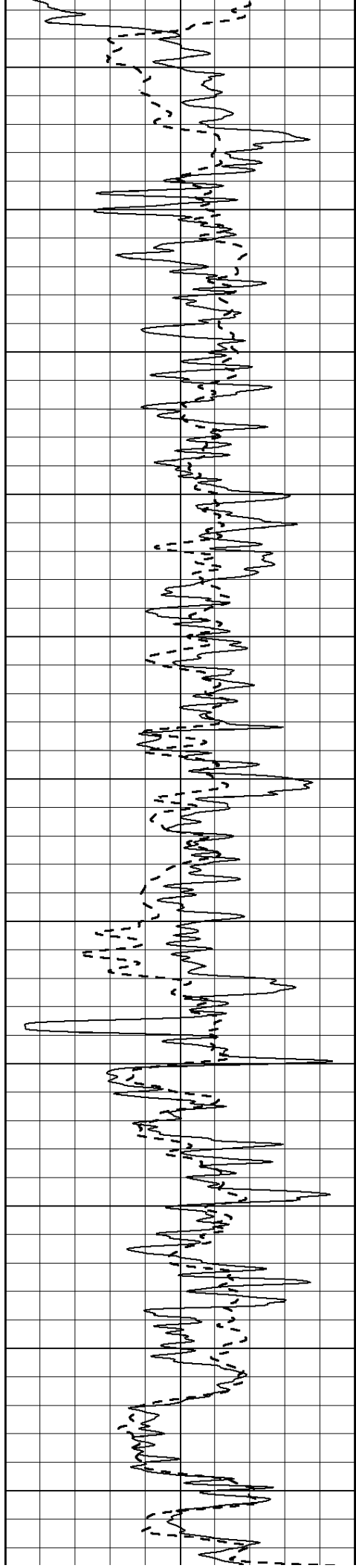
2450

2500

2550

2600





2650

2700

2750

2800

2850

2900

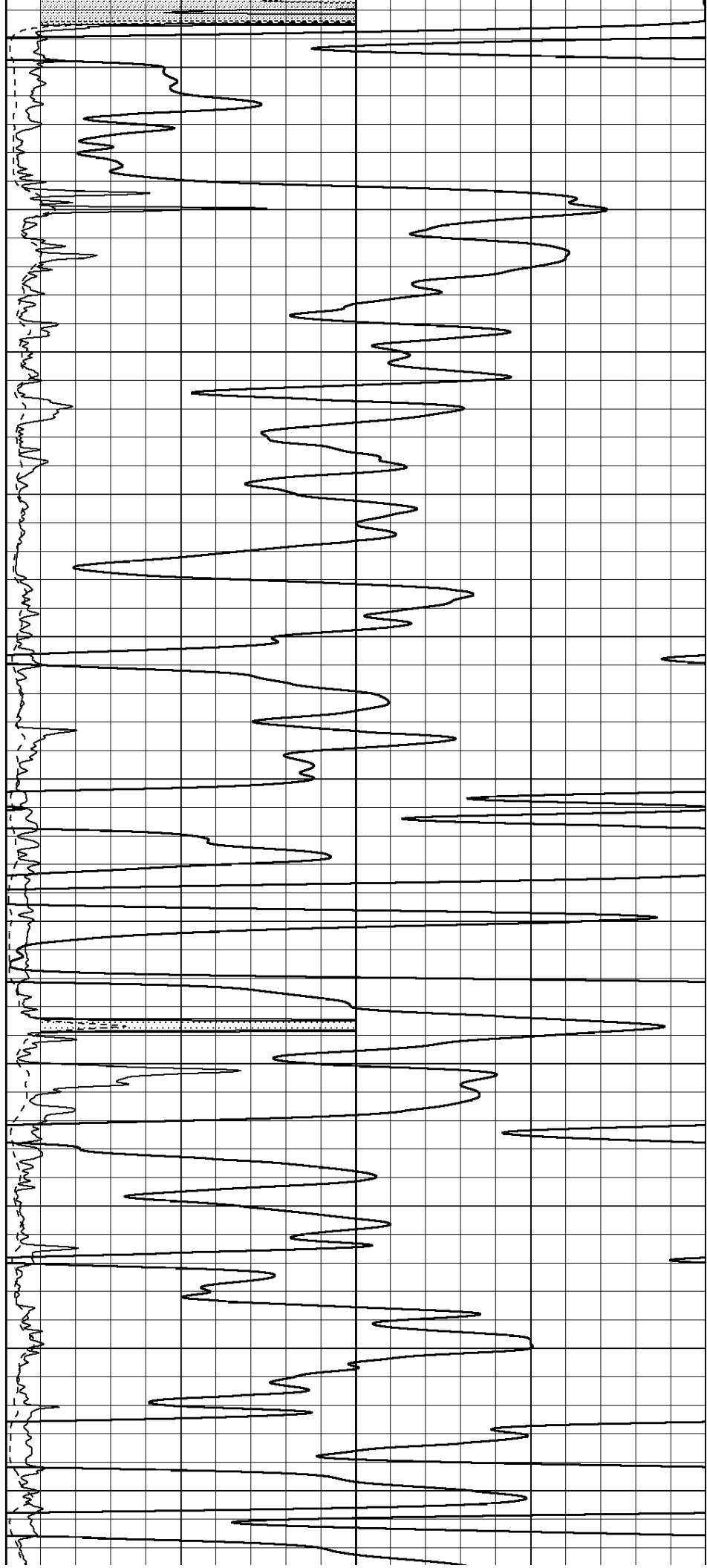
2950

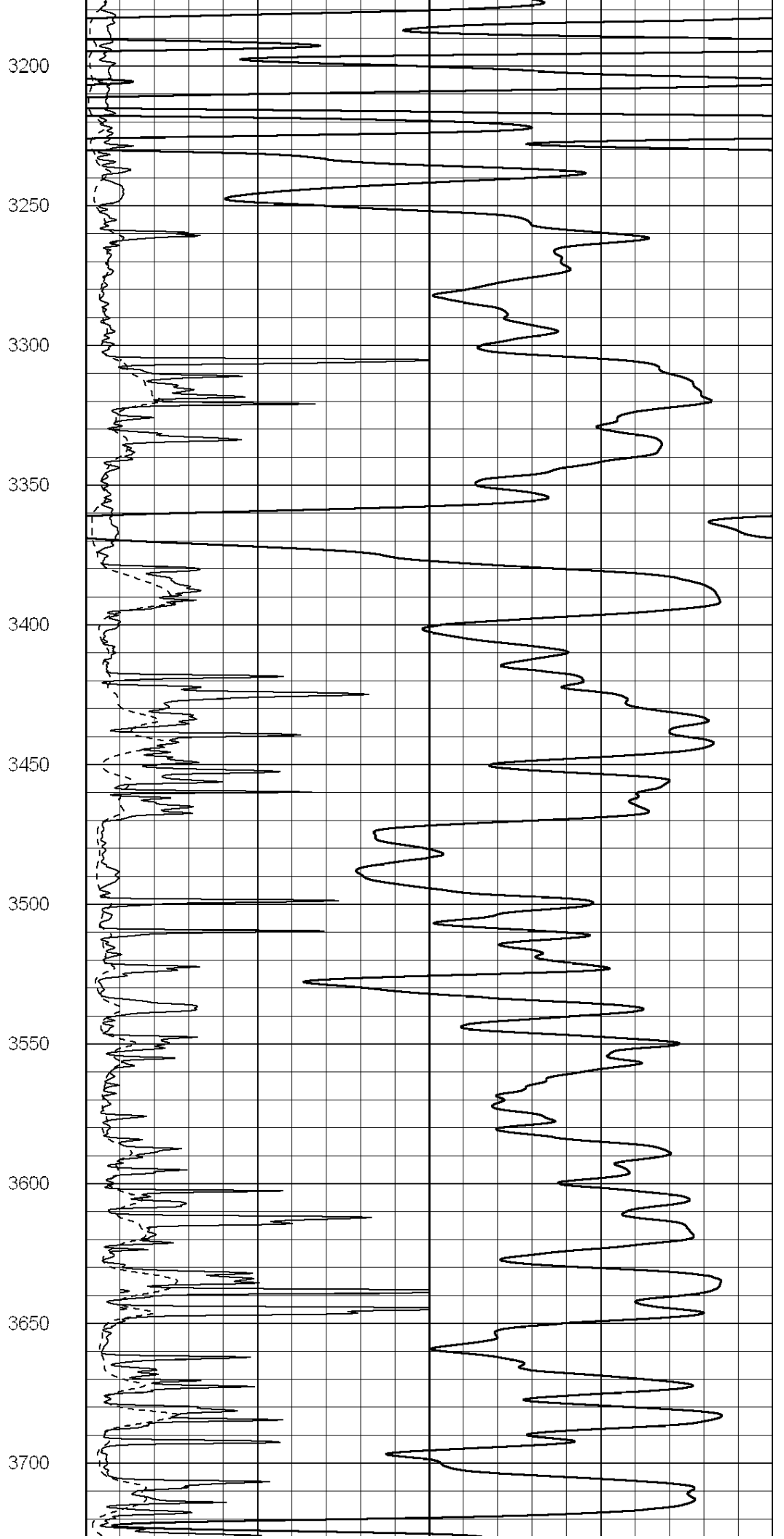
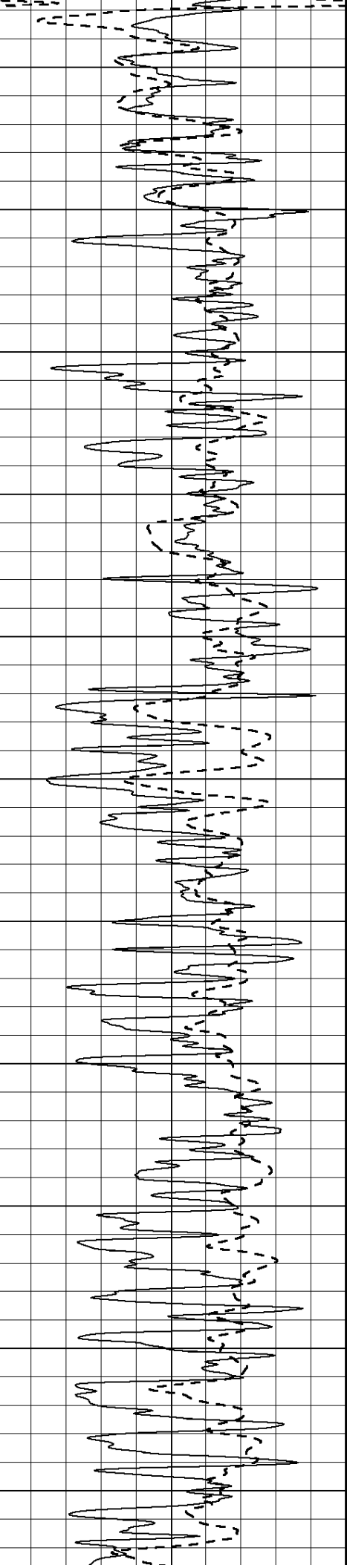
3000

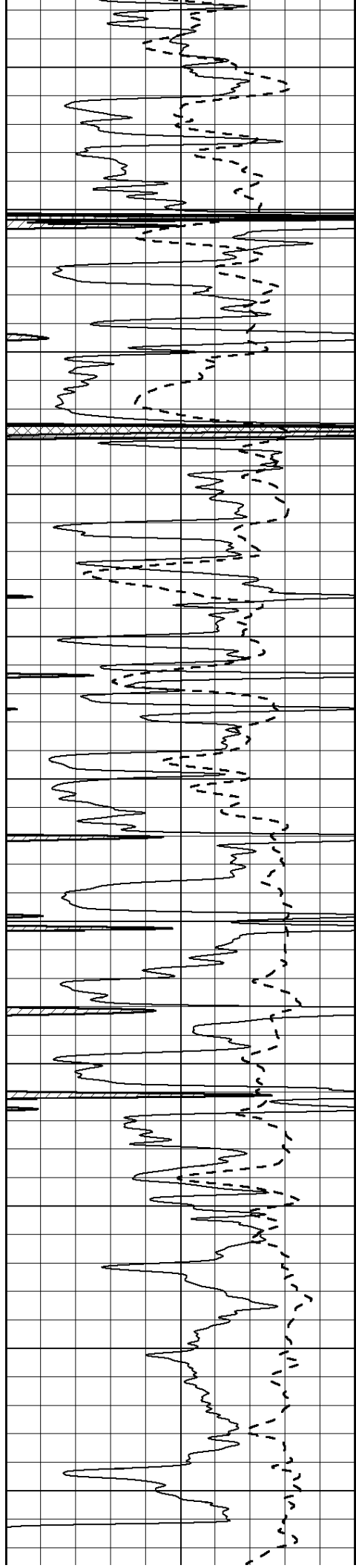
3050

3100

3150







3750

3800

3850

3900

3950

4000

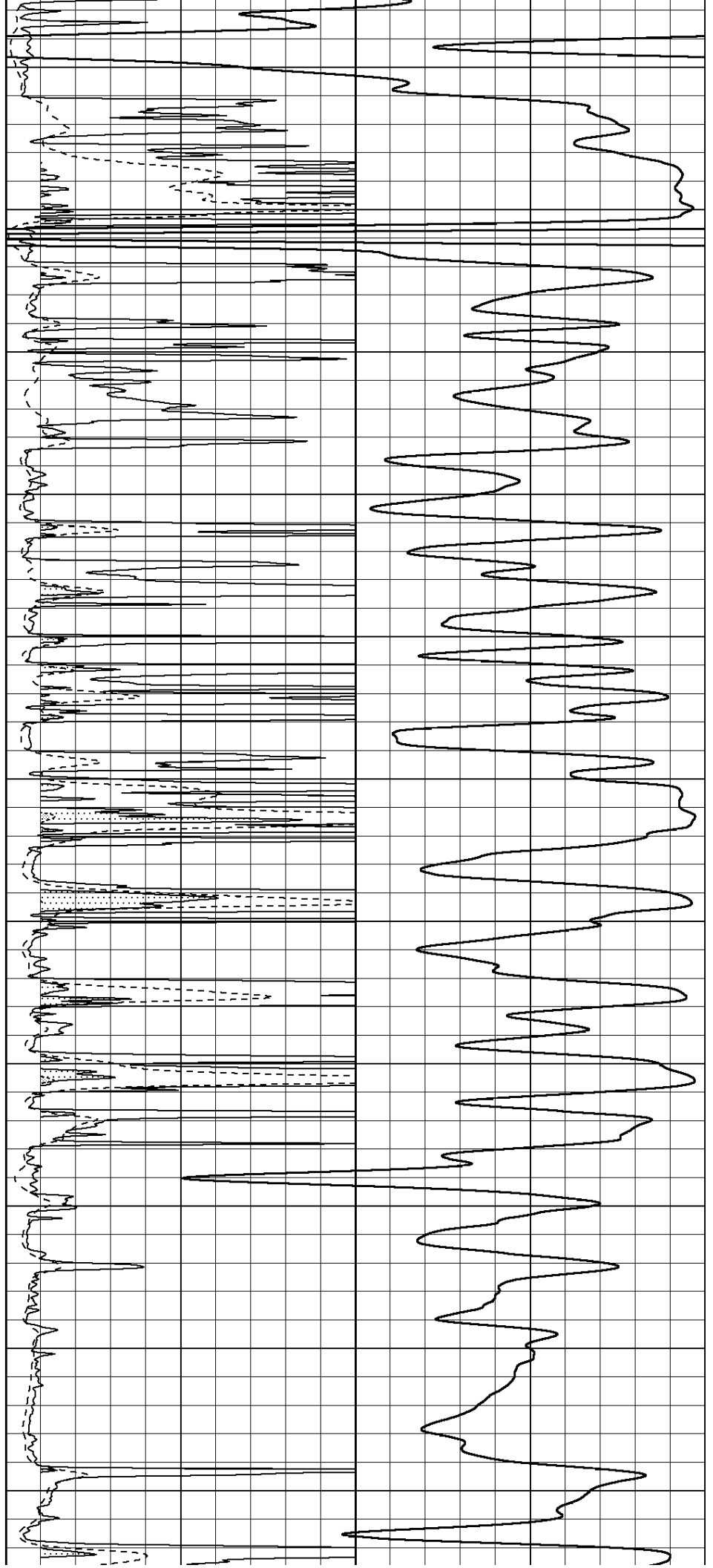
4050

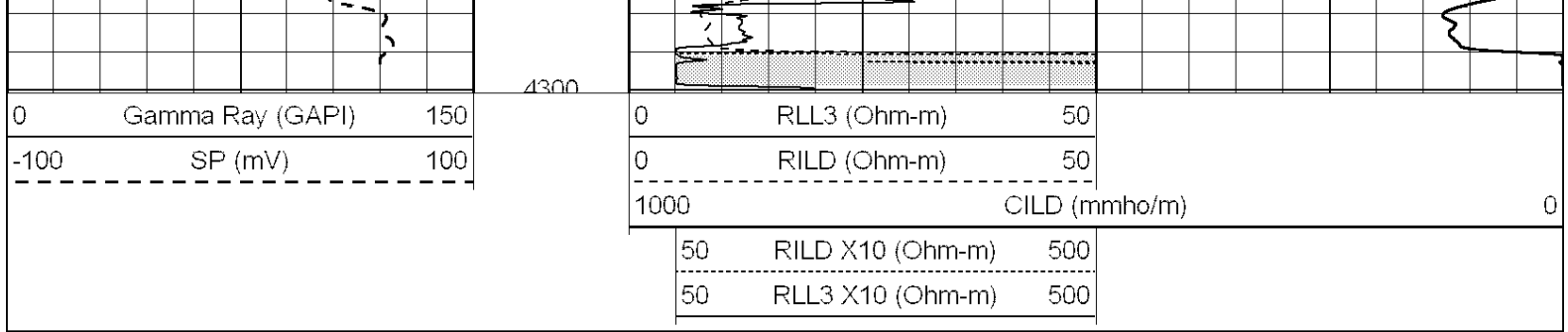
4100

4150

4200

4250

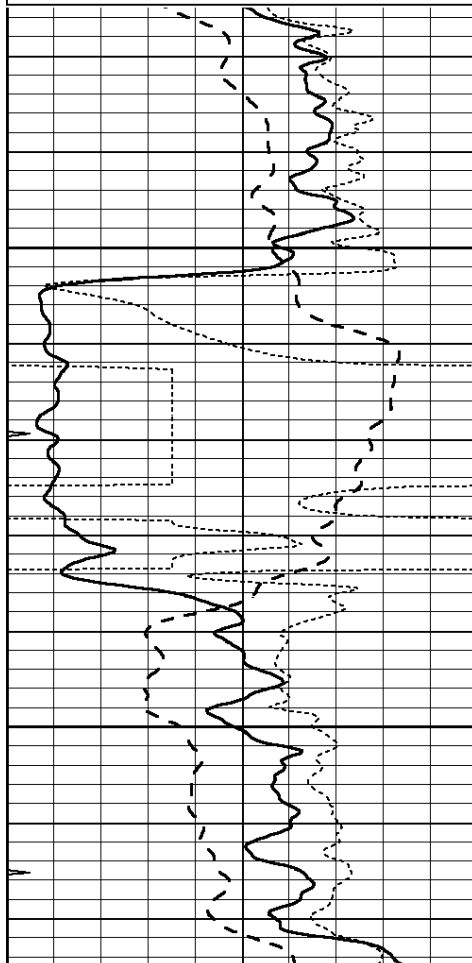




ANHYDRITE

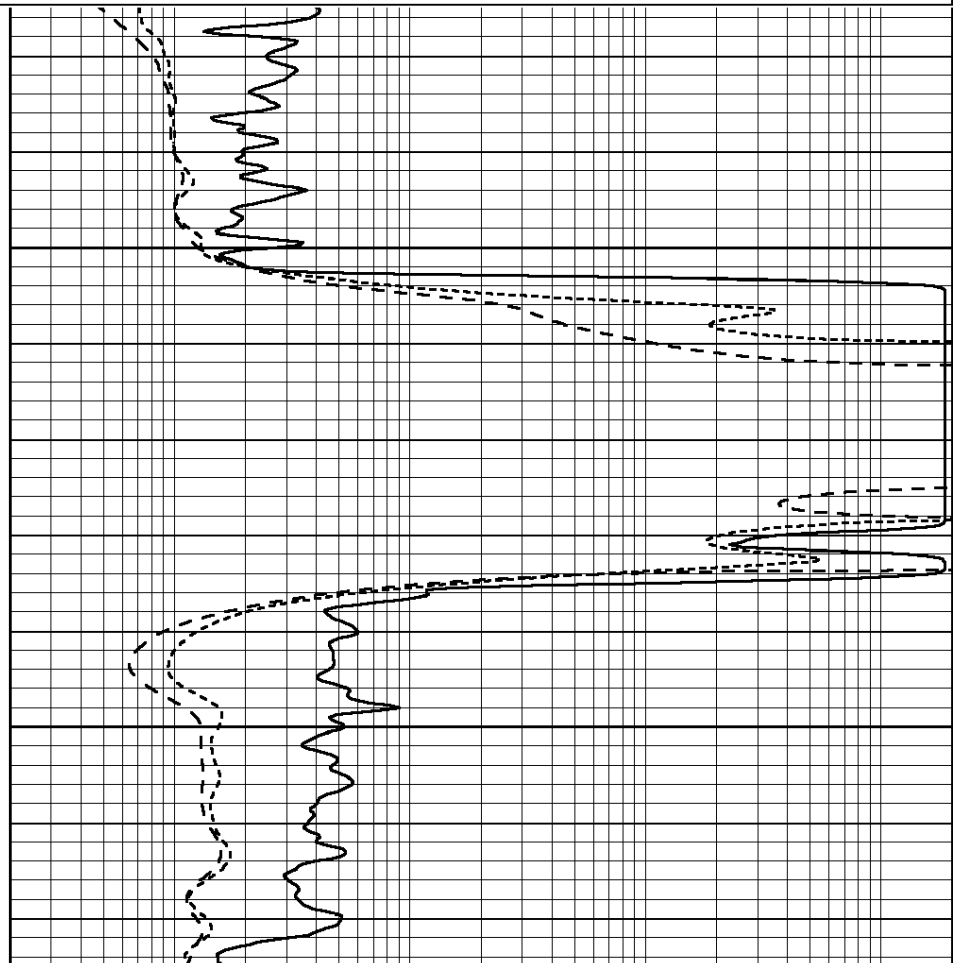
Database File: 23815ddn.db
 Dataset Pathname: pass7.4
 Presentation Format: _dil
 Dataset Creation: Wed Apr 23 03:05:43 2014 by Calc SOC 120430
 Charted by: Depth in Feet scaled 1:240

0	GAMMA RAY (GAPI)	150	0.2	SHALLOW GUARD (Ohm-m)	2000
-100	SP (mV)	100	0.2	DEEP INDUCTION (Ohm-m)	2000
-250	Rxo/Rt	50	0.2	MEDIUM INDUCTION (Ohm-m)	2000
0	MINMK	20			



2600

2650



0	GAMMA RAY (GAPI)	150	0.2	SHALLOW GUARD (Ohm-m)	2000
-100	SP (mV)	100	0.2	DEEP INDUCTION (Ohm-m)	2000
-250	Rxo/Rt	50	0.2	MEDIUM INDUCTION (Ohm-m)	2000



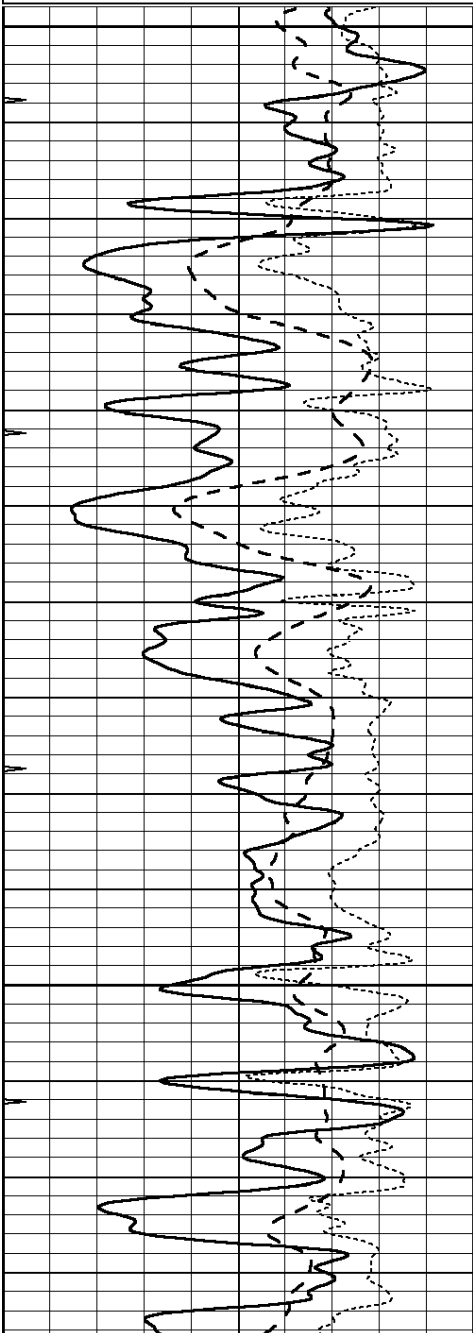
**COMPLETION
& PRODUCTION
SERVICES CO.**

MAIN SECTION

Database File: 23815ddn.db
 Dataset Pathname: pass7.3
 Presentation Format: _dil
 Dataset Creation: Wed Apr 23 03:03:36 2014 by Calc SOC 120430
 Charted by: Depth in Feet scaled 1:240

0	GAMMA RAY (GAPI)	150
-100	SP (mV)	100
-250	Rxo/Rt	50
0	MINMK	20

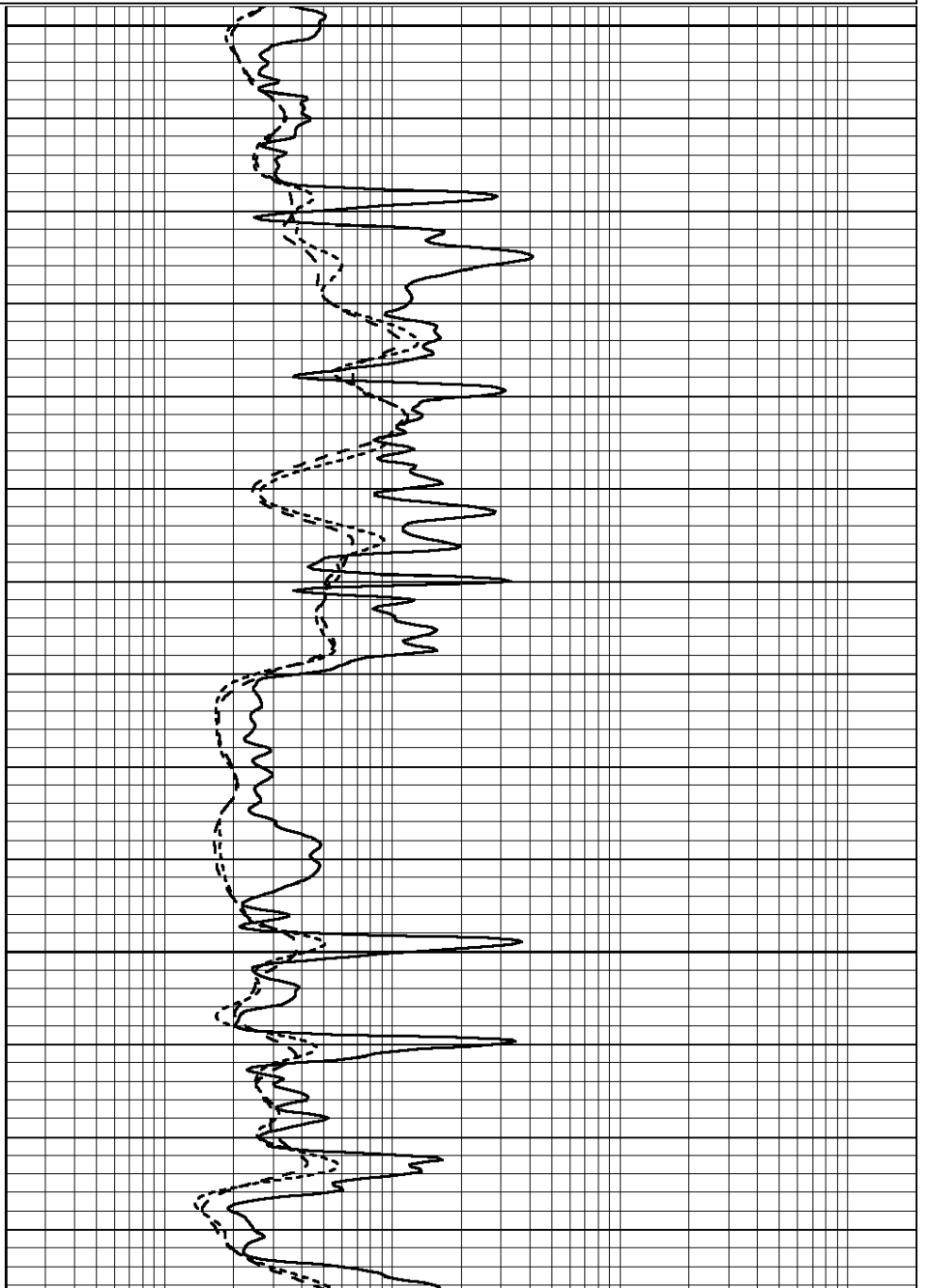
0.2	SHALLOW GUARD (Ohm-m)	2000
0.2	DEEP INDUCTION (Ohm-m)	2000
0.2	MEDIUM INDUCTION (Ohm-m)	2000

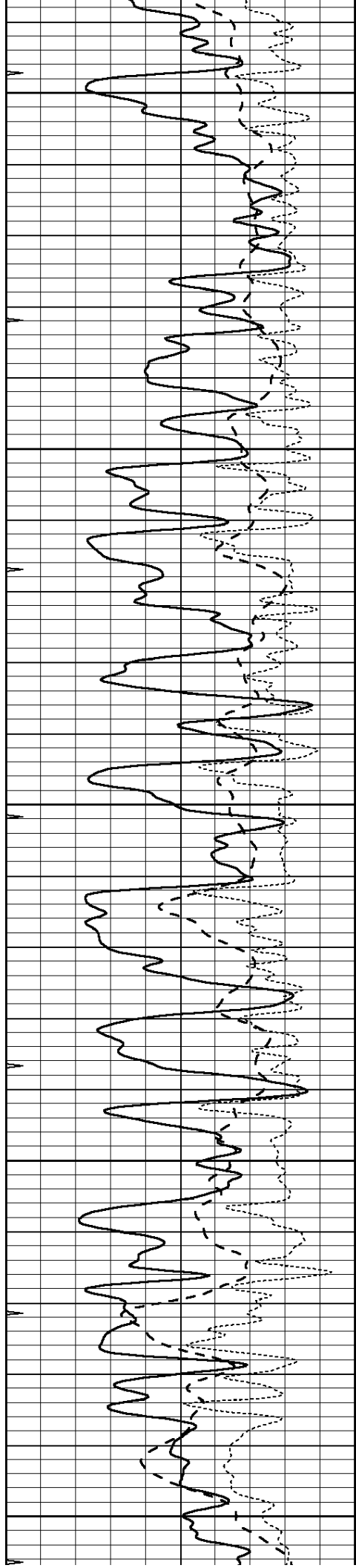


3400

3450

3500





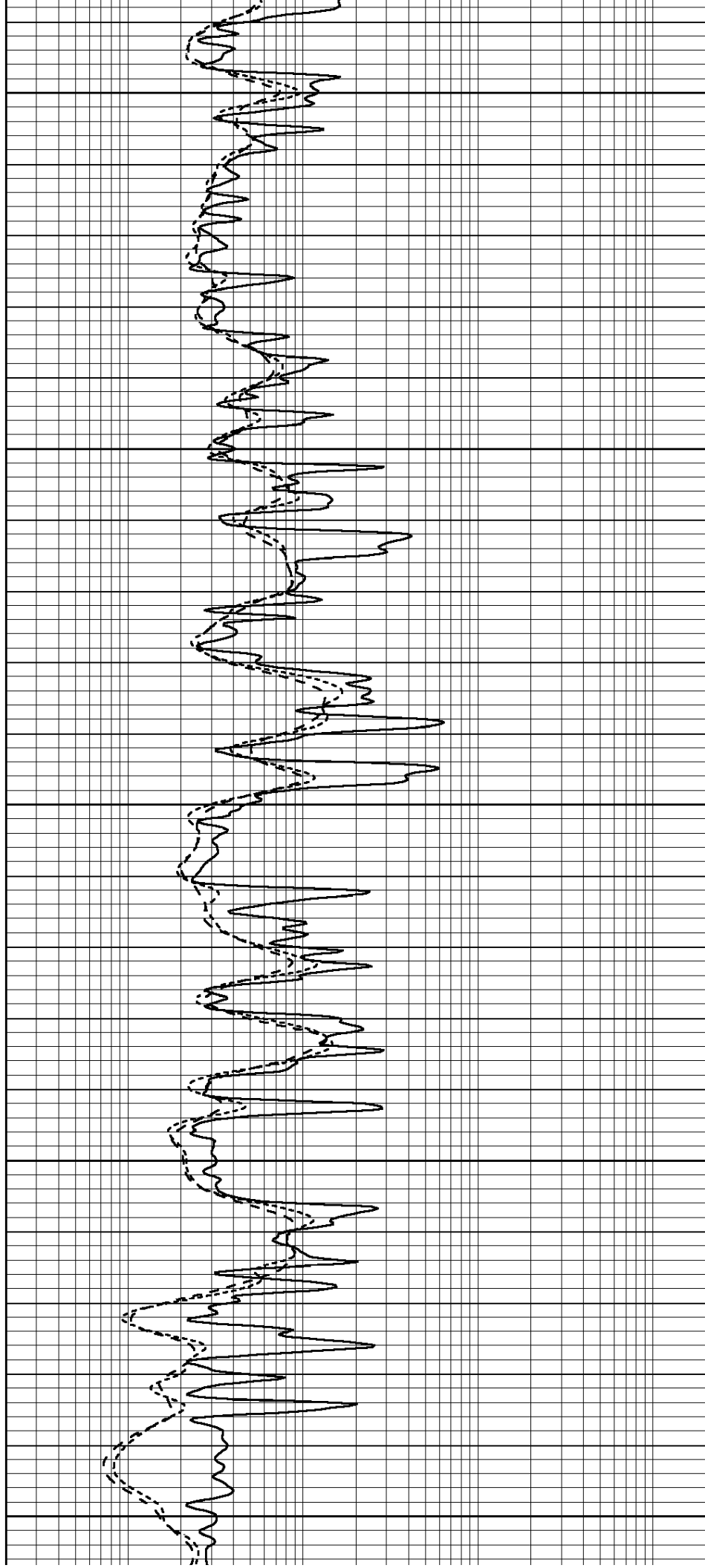
3550

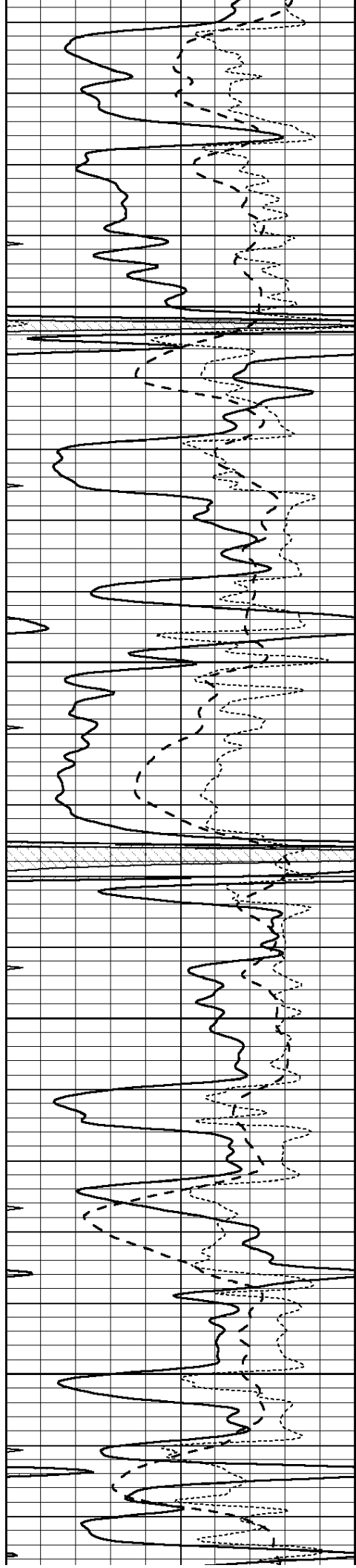
3600

3650

3700

3750



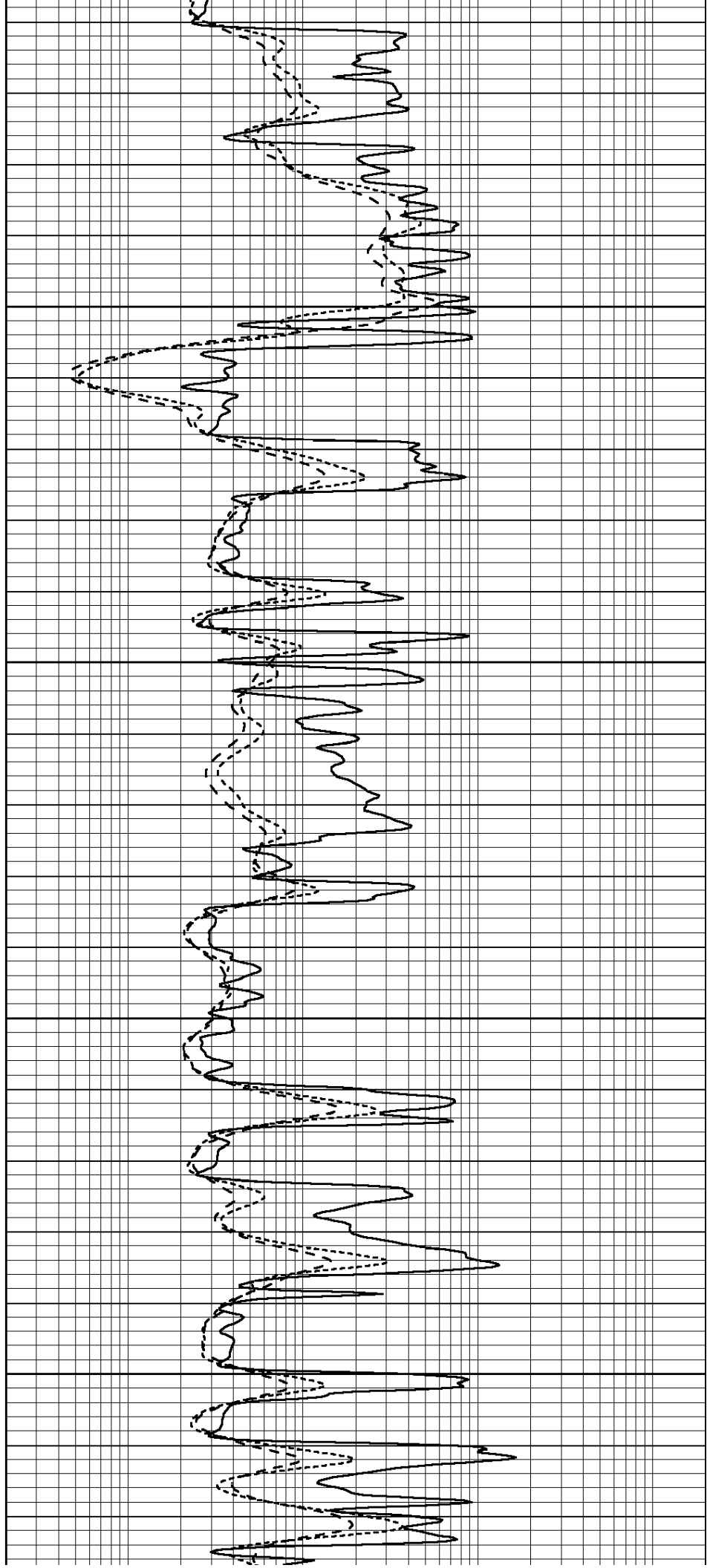


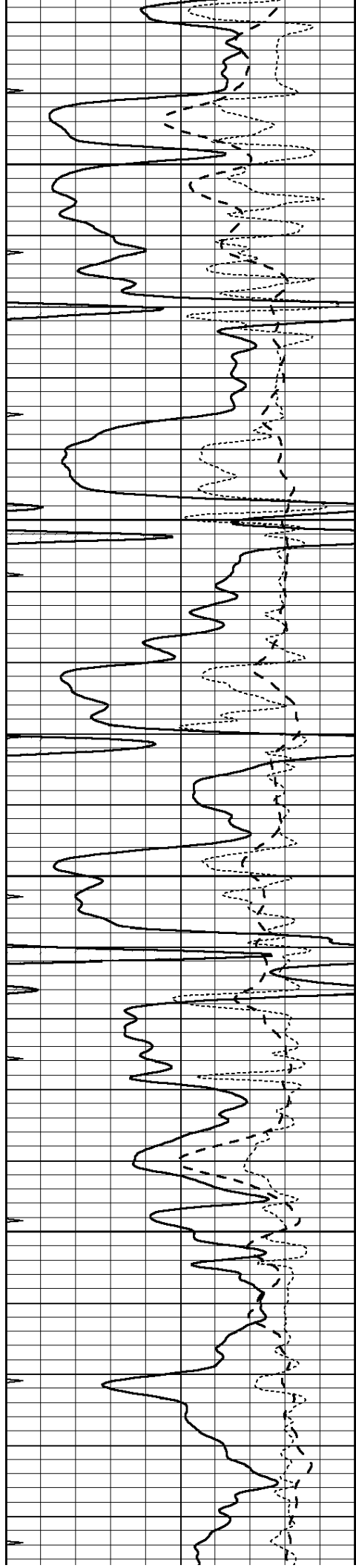
3800

3850

3900

3950



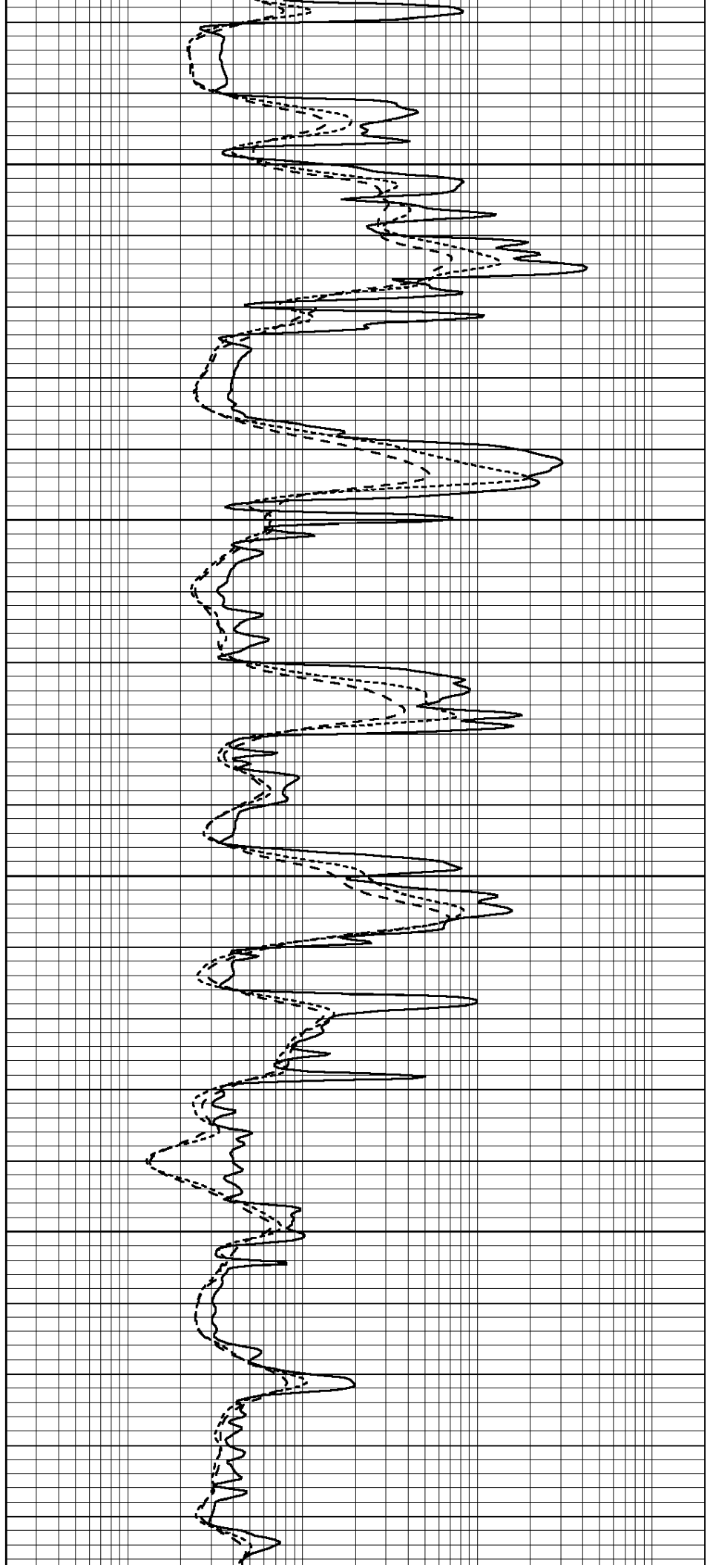


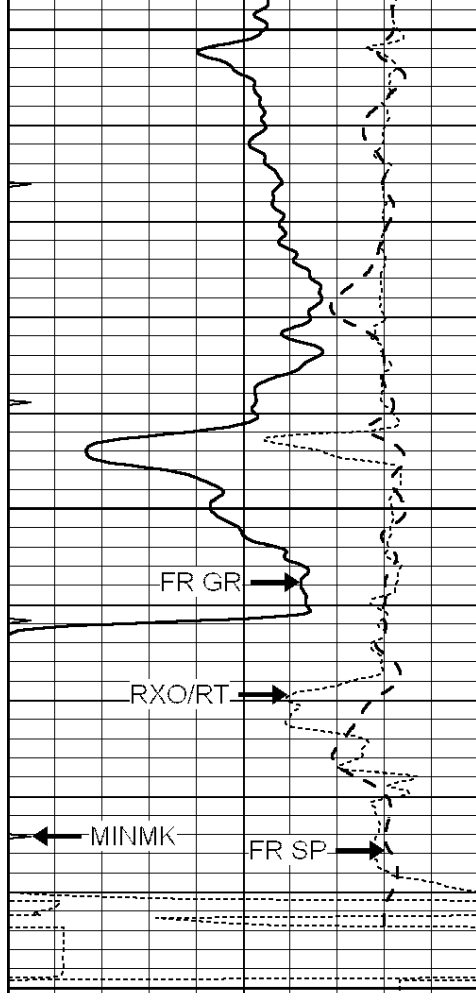
4000

4050

4100

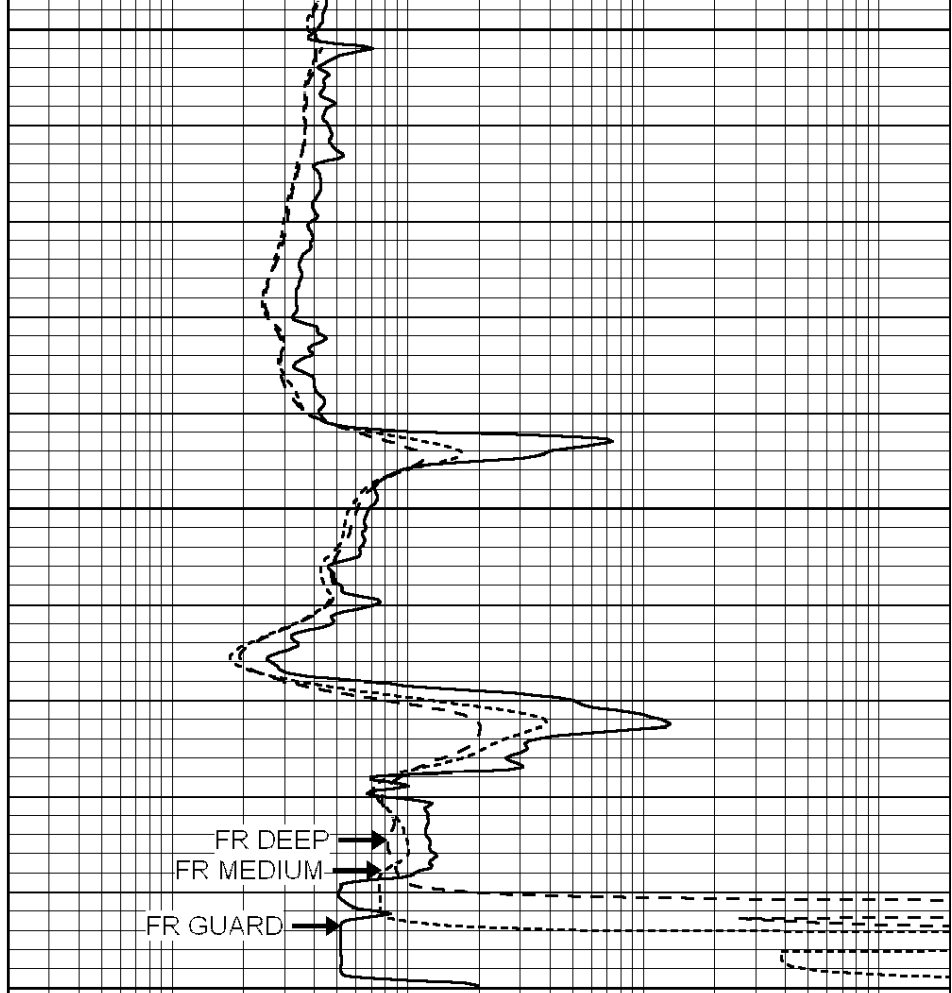
4150





4200
4250
LTD 4296
4300

0	GAMMA RAY (GAPI)	150
-100	SP (mV)	100
-250	Rxo/Rt	50
0	MINMK	20



0.2	SHALLOW GUARD (Ohm-m)	2000
0.2	DEEP INDUCTION (Ohm-m)	2000
0.2	MEDIUM INDUCTION (Ohm-m)	2000

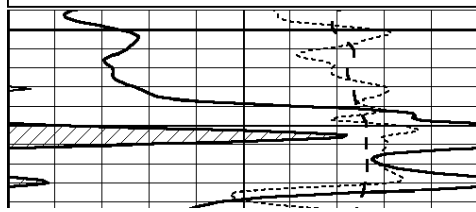


REPEAT SECTION

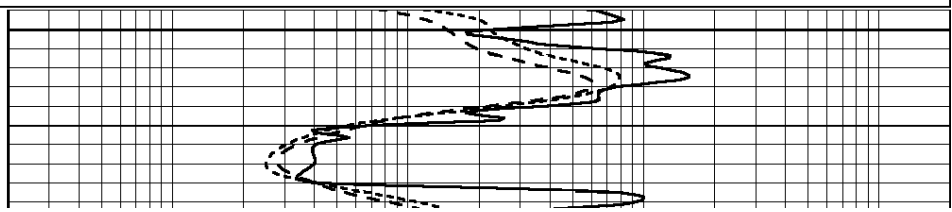
Database File: 23815ddn.db
 Dataset Pathname: pass6.4
 Presentation Format: _dil
 Dataset Creation: Wed Apr 23 03:14:31 2014 by Calc SOC 120430
 Charted by: Depth in Feet scaled 1:240

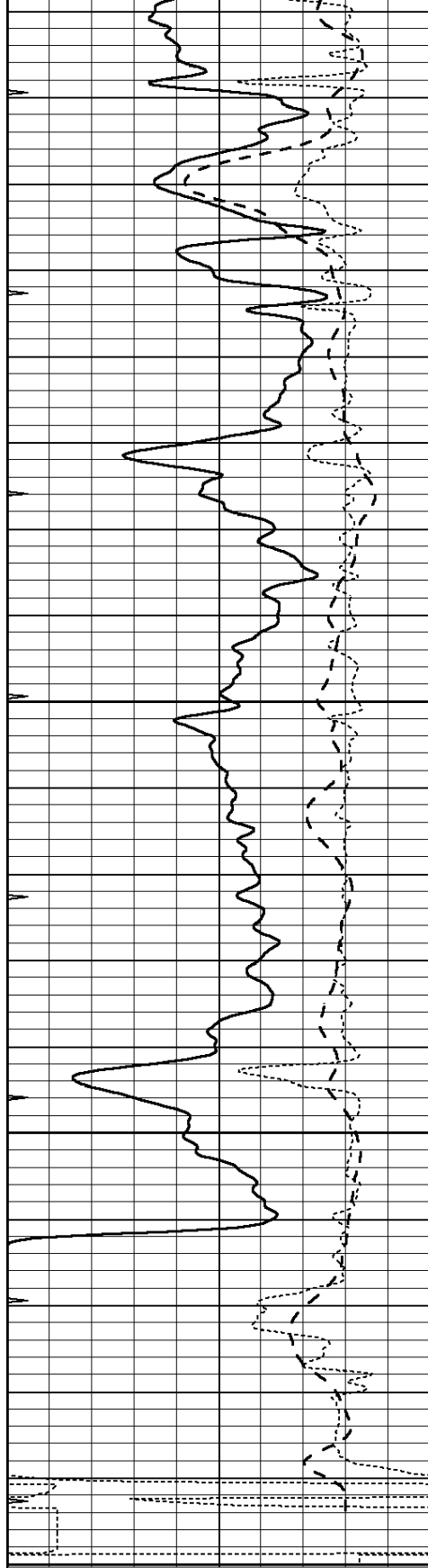
0	GAMMA RAY (GAPI)	150
-100	SP (mV)	100
-250	Rxo/Rt	50
0	MINMK	20

0.2	SHALLOW GUARD (Ohm-m)	2000
0.2	DEEP INDUCTION (Ohm-m)	2000
0.2	MEDIUM INDUCTION (Ohm-m)	2000



4100





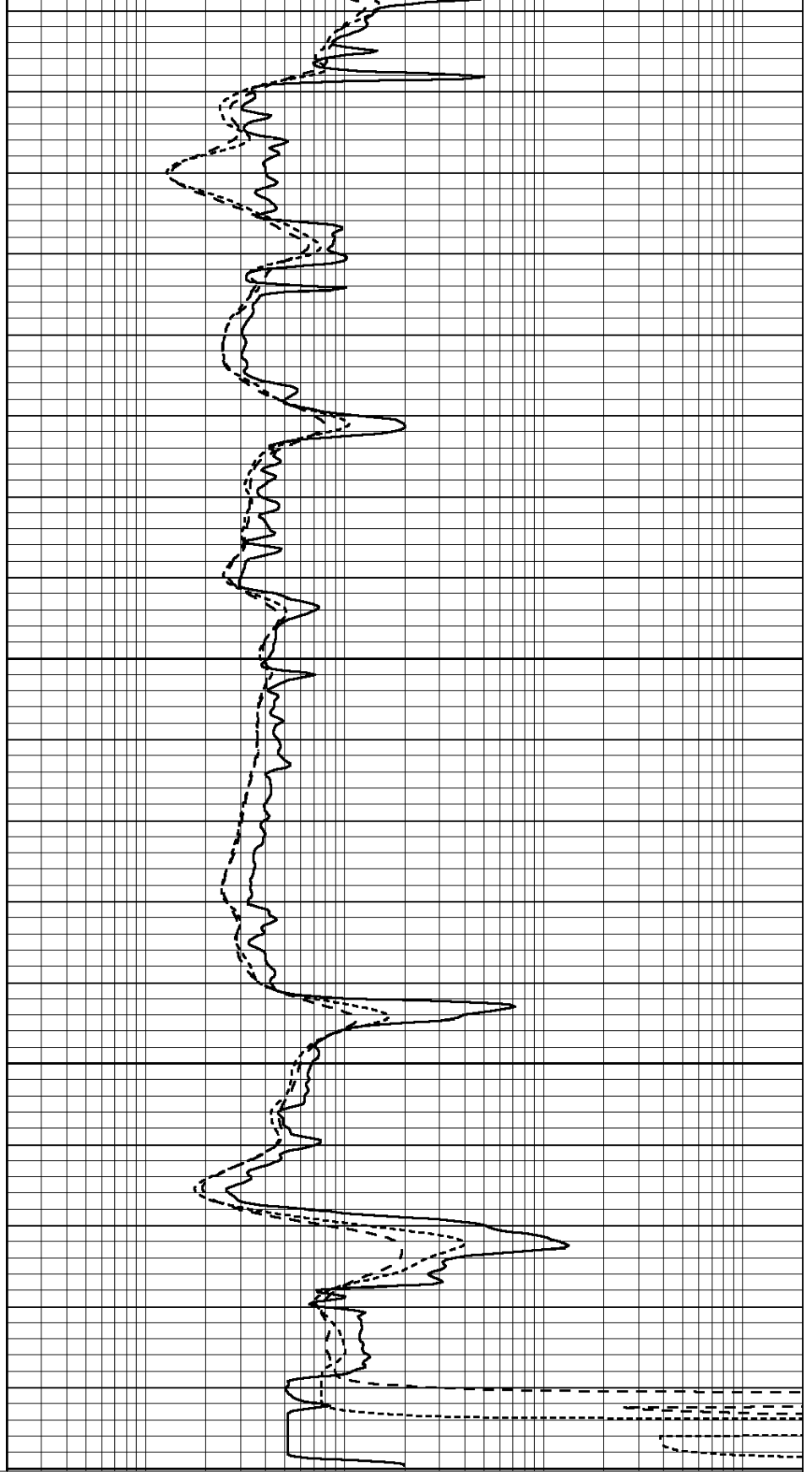
4150

4200

4250

4300

0	GAMMA RAY (GAPI)	150
-100	SP (mV)	100
-250	Rxo/Rt	50
0	MINMK	20



0.2	SHALLOW GUARD (Ohm-m)	2000
0.2	DEEP INDUCTION (Ohm-m)	2000
0.2	MEDIUM INDUCTION (Ohm-m)	2000

Dual Induction Calibration Report

Serial-Model: PROBE9-DILG
 Surface Cal Performed: Wed Apr 23 01:07:33 2014
 Downhole Cal Performed: Mon Jul 28 12:02:56 2008
 After Survey Verification Performed: Mon Jul 28 12:02:56 2008

Surface Calibration

Loop:	Readings			References			Results	
	Air	Loop		Air	Loop		m	b
Deep	-0.014	0.629	V	0.000	400.000	mmho/m	650.000	-22.000
Medium	0.039	0.728	V	0.000	464.000	mmho/m	660.000	-28.000
Internal:	Zero	Cal		Zero	Cal		m	b
Deep	0.011	0.610	V	0.000	400.000	mmho/m	667.135	-7.256
Medium	0.005	0.712	V	0.000	464.000	mmho/m	655.677	-3.102

Downhole Calibration

	Readings			References			Results	
	Zero	Cal		Zero	Cal		m'	b'
Deep	0.000	0.000	mmho/m	14.508	388.384	mmho/m	1.000	0.000
Medium	0.000	0.000	mmho/m	166.367	504.400	mmho/m	1.000	0.000
LL3		7.500	V		1400.000	Ohm-m		
		0.000	V		20.000	Ohm-m		
		-7.200	V		4000.000	mmho-m		

After Survey Verification

	Readings			Targets			Results	
	Zero	Cal		Zero	Cal		m'	b'
Deep	0.000	0.000	mmho/m	0.000	0.000	mmho/m	0.000	0.000
Medium	0.000	0.000	mmho/m	0.000	0.000	mmho/m	0.000	0.000
LL3		1.000	Ohm-m		1.000	Ohm-m		
		0.000	Ohm-m		0.000	Ohm-m		
		1.000	mmho-m		1.000	mmho-m		

Litho Density Calibration Report
 Serial: 003N Model: PRB

Master Calibration

Performed Tue Sep 08 14:14:44 2009

	Background	Magnesium	Aluminum	Sandstone	
Window 1	2042.6	12312.8	4225.8	13758.4	cps
Window 2	1855.8	10134.7	3624.2	11113.1	cps
Window 3	1639.4	6760.2	2716.3	7260.3	cps
Window 4	466.4	469.2	466.1	476.5	cps
Long Space	0.0	8278.9	1768.4	9257.4	cps
Short Space	2.2	2377.3	1544.1	2574.2	cps
Rho		1.7100	2.5900	1.3800	g/cc
Pe		0.0000	2.5700	1.5500	
Rib Angle	: 44.4	Rib Slope	: 0.979	Density/Spine Ratio	: 0.549
Spine Angle	: 74.4	Spine Slope	: 3.577	Spine Intercept	: -18.8

Before Survey Verification

Performed Wed Dec 31 18:00:00 1969

Window 1	0.0	0.0	0.0	0.0	cps
----------	-----	-----	-----	-----	-----

Window 1	0.0	0.0	0.0	0.0	cps
Window 2	0.0	0.0	0.0	0.0	cps
Window 3	0.0	0.0	0.0	0.0	cps
Window 4	0.0	0.0	0.0	0.0	cps
Long Space	0.0	0.0	0.0	0.0	cps
Short Space	0.0	0.0	0.0	0.0	cps
Measured Rho		0.0000	0.0000	0.0000	g/cc
Measured Correction		0.0000	0.0000	0.0000	g/cc
Measured Pe			0.0000	0.0000	

After Survey Verification		Performed Wed Dec 31 18:00:00 1969			
Window 1	0.0	0.0	0.0	0.0	cps
Window 2	0.0	0.0	0.0	0.0	cps
Window 3	0.0	0.0	0.0	0.0	cps
Window 4	0.0	0.0	0.0	0.0	cps
Long Space	0.0	0.0	0.0	0.0	cps
Short Space	0.0	0.0	0.0	0.0	cps
Measured Rho		0.0000	0.0000	0.0000	g/cc
Measured Correction		0.0000	0.0000	0.0000	g/cc
Measured Pe			0.0000	0.0000	

Compensated Neutron Calibration Report

Serial Number: 070808
Tool Model: Probe

PRE-SURVEY VERIFICATION				
Detector	Readings	Measured	Target	
Short Space	cps			
Long Space	cps	pu	pu	

POST-SURVEY VERIFICATION				
Detector	Readings	Measured	Target	
Short Space	cps			
Long Space	cps	pu	pu	

Gamma Ray Calibration Report

Serial Number: 070558
Tool Model: OPEN_GR
Performed: Mon Mar 24 01:53:40 2014

Calibrator Value: 1.0 GAPI

Background Reading: 0.0 cps
Calibrator Reading: 1.0 cps

Sensitivity: 0.3000 GAPI/cps