



**COMPLETION
& PRODUCTION
SERVICES CO.**

**COMPENSATED
DENSITY / NEUTRON
LOG**

Company GREAT PLAINS ENERGY, INC.
Well SAUVAGE #10
Field SWEDE HOLLOW
County DECATUR
State KANSAS

Company GREAT PLAINS ENERGY, INC.
Well SAUVAGE #10
Field SWEDE HOLLOW
County DECATUR State KANSAS

Location: API # : 15-039-21197-0000
1400' FNL & 1290' FEL
SEC 35 TWP 4S RGE 30W
Permanent Datum GROUND LEVEL Elevation 2845
Log Measured From KELLY BUSHING 5' A.G.L.
Drilling Measured From KELLY BUSHING
Other Services
MEL/DIL
Elevation
K.B. 2850
D.F. 2848
G.L. 2845

Date	4/22/14
Run Number	TWO
Depth Driller	4295
Depth Logger	4296
Bottom Logged Interval	4272
Top Log Interval	3400
Casing Driller	8 5/8"@260'
Casing Logger	260
Bit Size	7 7/8"
Type Fluid in Hole	CHEMICAL MUD
Density / Viscosity	9.5/70
pH / Fluid Loss	9.5/7.2
Source of Sample	FLOWLINE
Rim @ Meas. Temp	.950@70F
Rmf @ Meas. Temp	.713@70F
Rmc @ Meas. Temp	1.14@70F
Source of Rmf / Rmc	MEASUREMENT
Rim @ BHT	.559@119F
Time Circulation Stopped	3.5 HOURS
Time Logger on Bottom	11:45 P.M.
Maximum Recorded Temperature	119F
Equipment Number	4854
Location	HAYS, KANSAS
Recorded By	JEFF LUEBBERS
Witnessed By	RICHARD BELL

<<< Fold Here >>>

All interpretations are opinions based on inferences from electrical or other measurements and we cannot and do not guarantee the accuracy or correctness of any interpretation, and we shall not, except in the case of gross or willful negligence on our part, be liable or responsible for any loss, costs, damages, or expenses incurred or sustained by anyone resulting from any interpretation made by any of our officers, agents or employees. These interpretations are also subject to our general terms and conditions set out in our current Price Schedule.

Comments

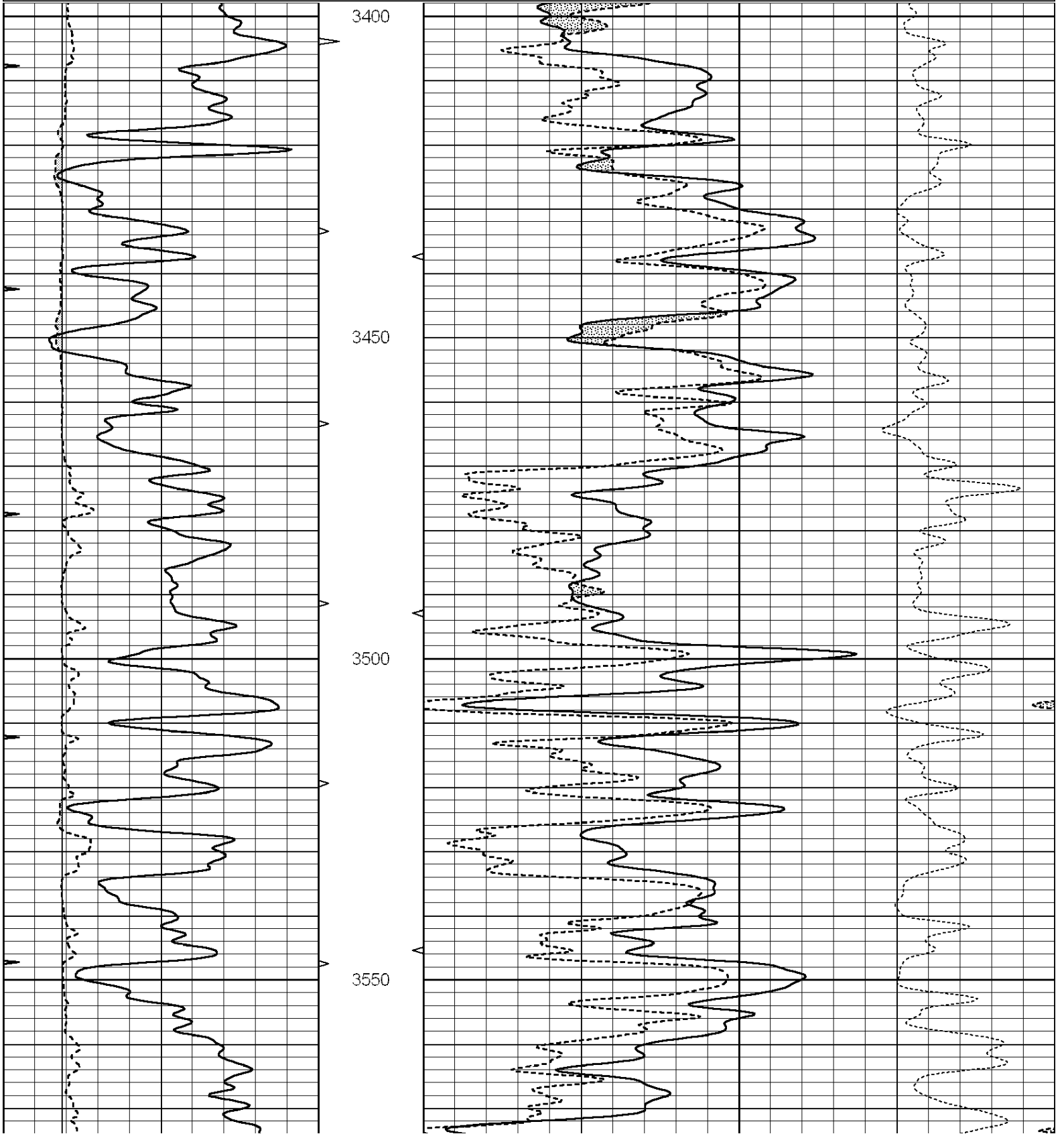
THANK YOU FOR USING "NABORS" HAYS, KANSAS (785) 628-6395
DIRECTIONS
SELDON, KS., N. ON HWY 23 TO "RD. 10", 6W., 1S., 1/2W., S. INTO

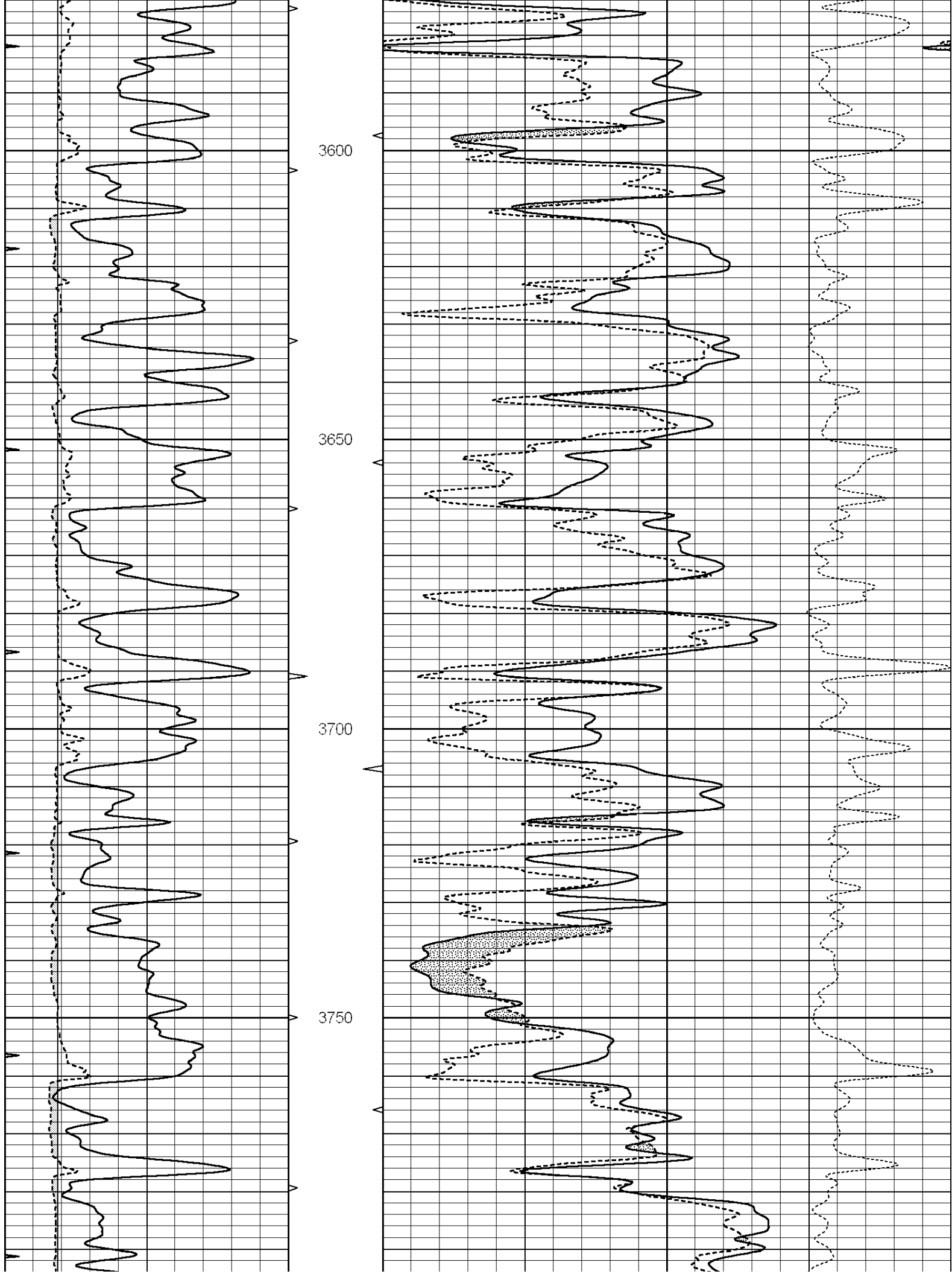


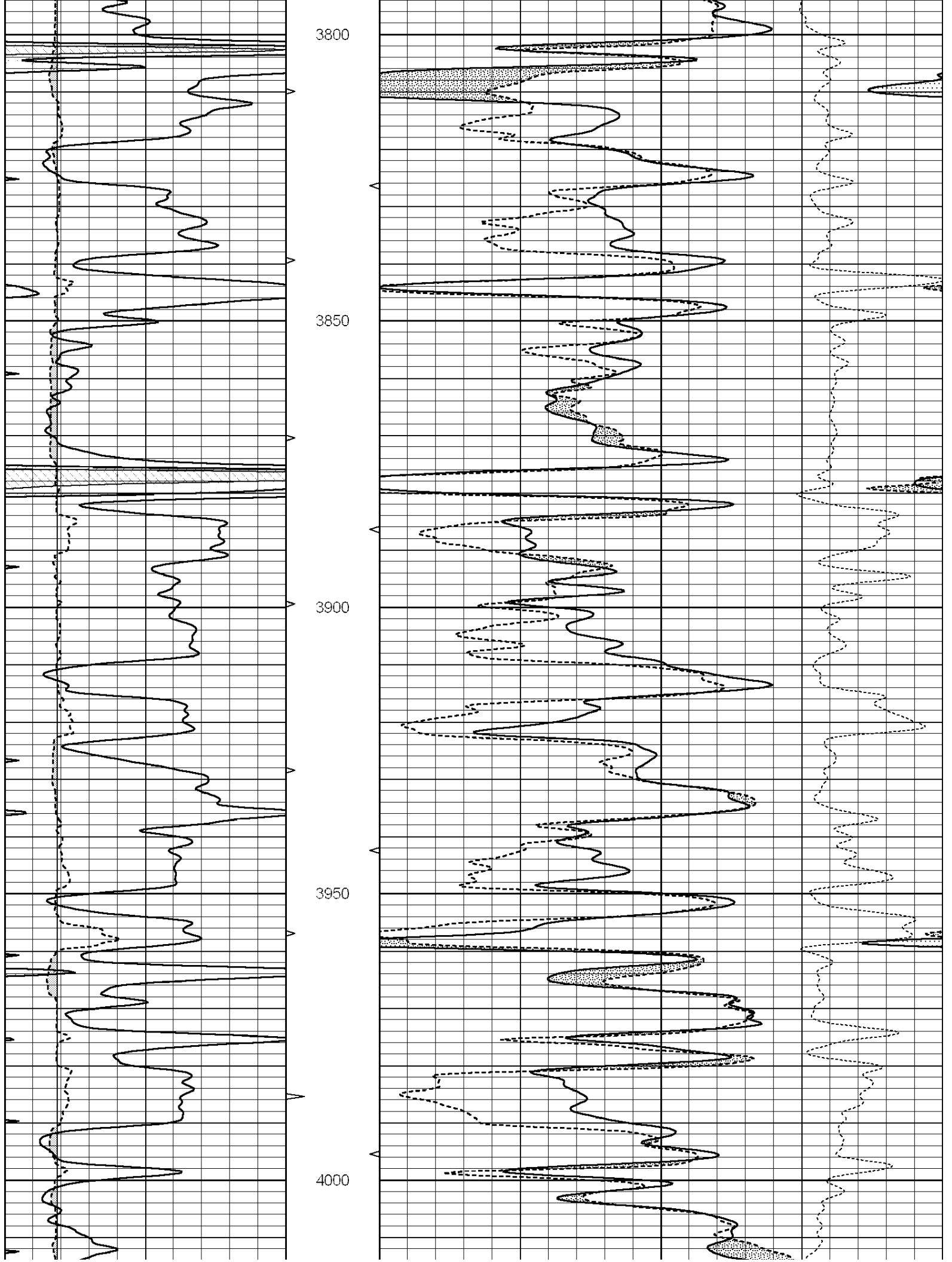
MAIN SECTION

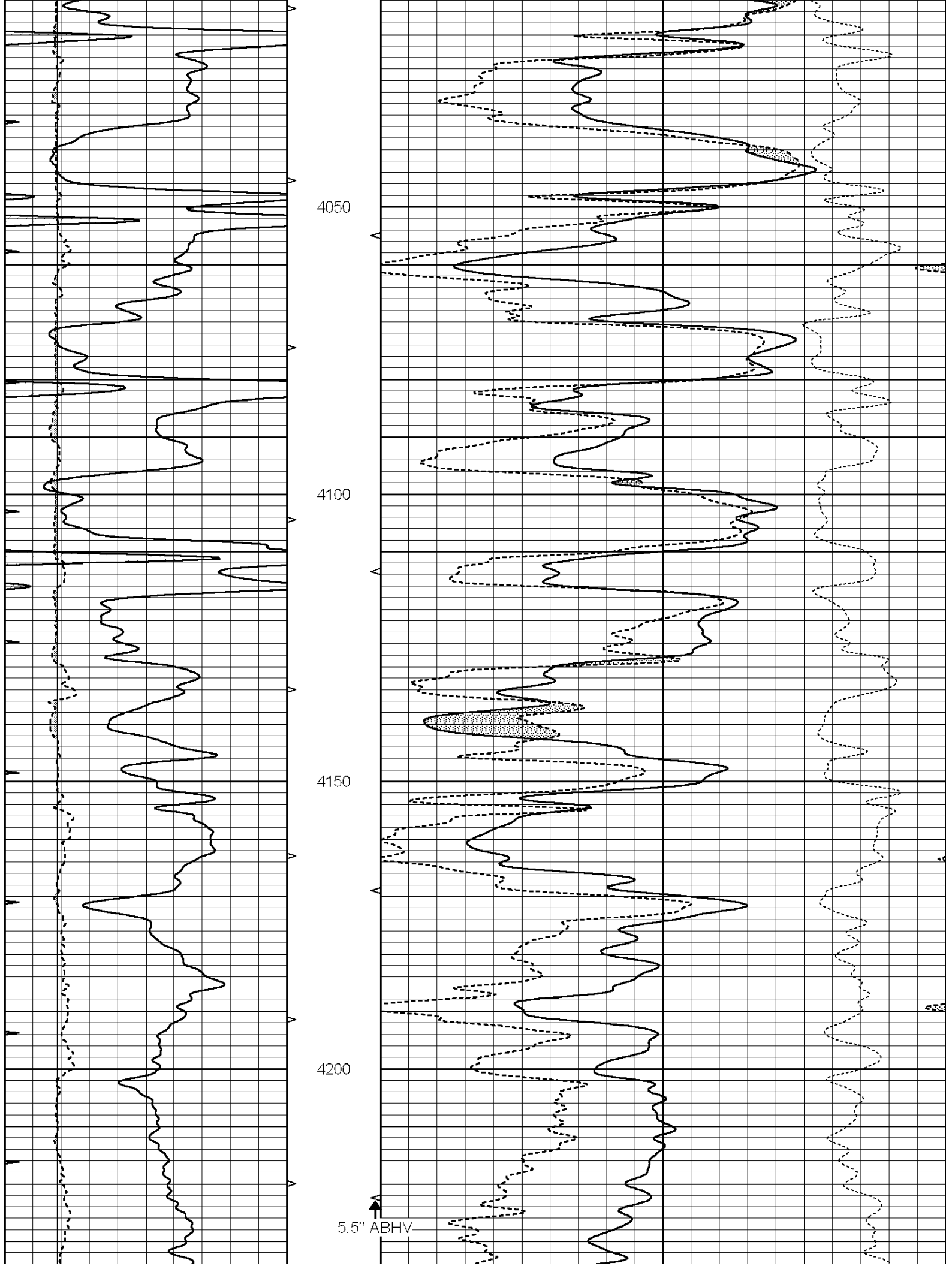
Database File: 23815ddn.db
 Dataset Pathname: pass7.3
 Presentation Format: den_neu
 Dataset Creation: Wed Apr 23 03:03:36 2014 by Calc SOC 120430
 Charted by: Depth in Feet scaled 1:240

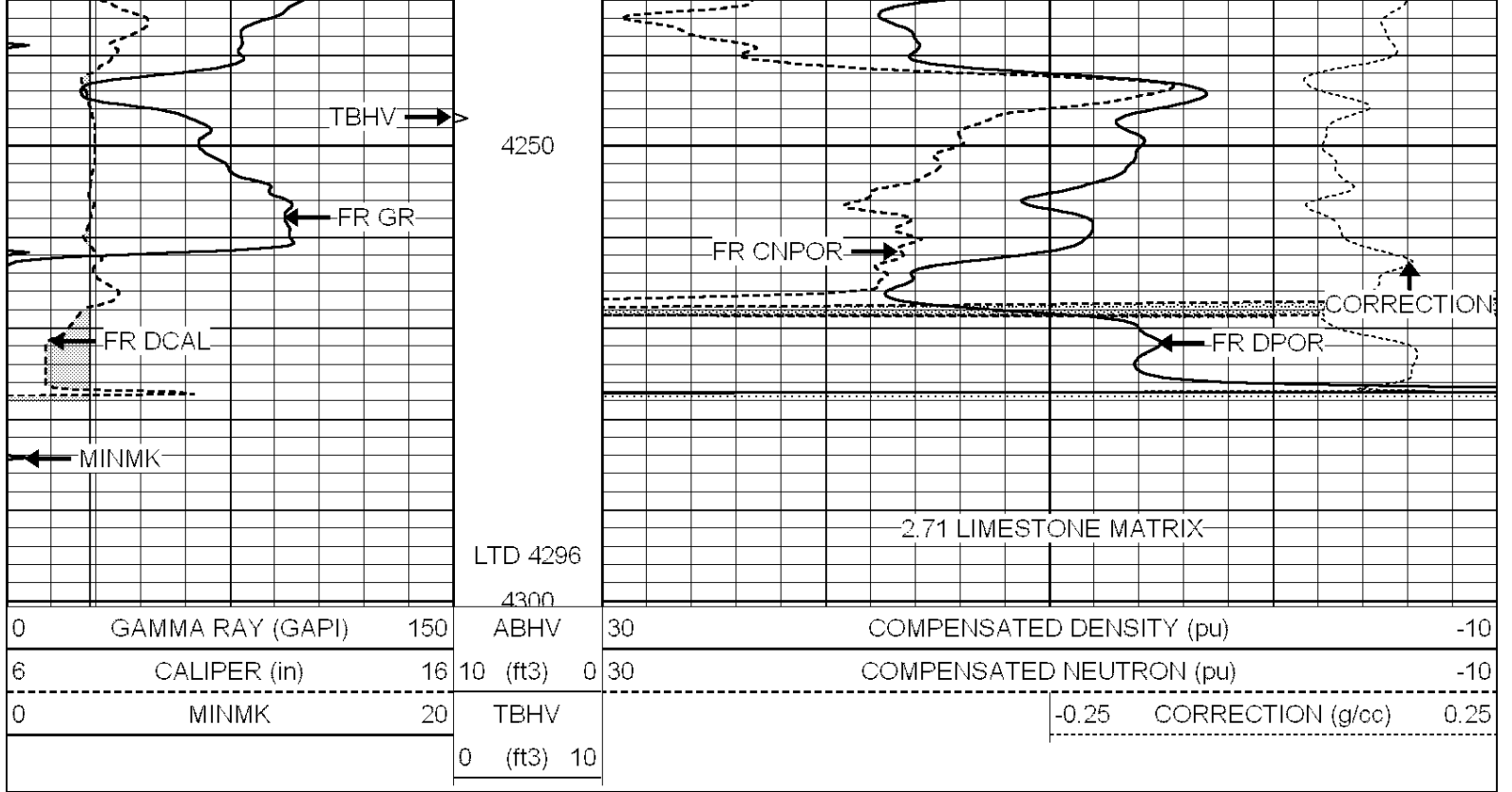
0	GAMMA RAY (GAPI)	150	ABHV	30	COMPENSATED DENSITY (pu)	-10
6	CALIPER (in)	16	10 (ft3)	0 30	COMPENSATED NEUTRON (pu)	-10
0	MINMK	20	TBHV		-0.25 CORRECTION (g/cc)	0.25
			0 (ft3)	10		







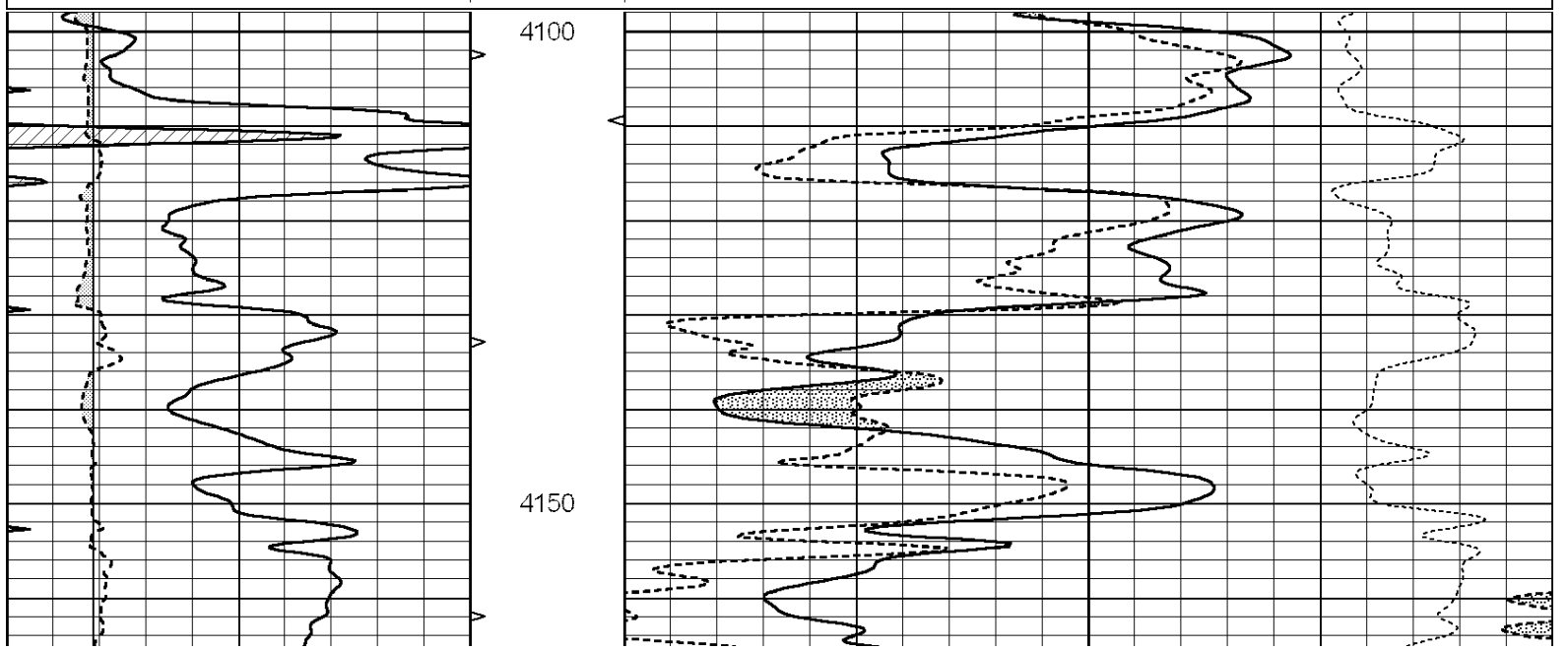


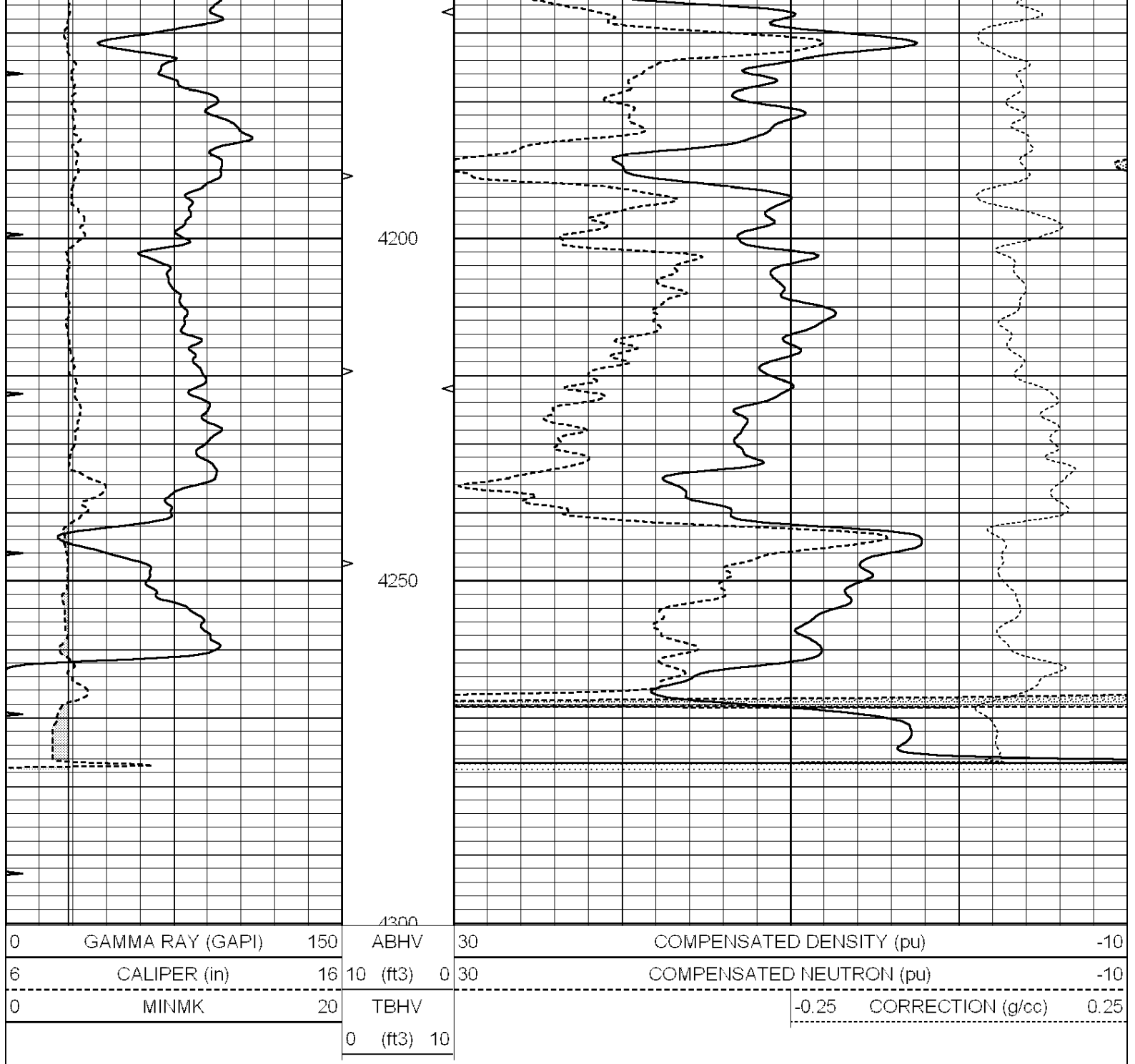


REPEAT SECTION

Database File: 23815ddn.db
 Dataset Pathname: pass6.4
 Presentation Format: den_neu
 Dataset Creation: Wed Apr 23 03:14:31 2014 by Calc SOC 120430
 Charted by: Depth in Feet scaled 1:240

0	GAMMA RAY (GAPI)	150	ABHV	30	COMPENSATED DENSITY (pu)	-10
6	CALIPER (in)	16	10 (ft3)	0 30	COMPENSATED NEUTRON (pu)	-10
0	MINMK	20	TBHV		-0.25	CORRECTION (g/cc) 0.25
			0 (ft3)	10		





0	GAMMA RAY (GAPI)	150	ABHV	30	COMPENSATED DENSITY (pu)	-10
6	CALIPER (in)	16	10 (ft3)	0 30	COMPENSATED NEUTRON (pu)	-10
0	MINMK	20	TBHV		-0.25	CORRECTION (g/cc) 0.25
			0 (ft3) 10			

Calibration Report

Database File: 23815ddn.db
 Dataset Pathname: pass7.3
 Dataset Creation: Wed Apr 23 03:03:36 2014 by Calc SOC 120430

Dual Induction Calibration Report

Serial-Model: PROBE9-DILG
 Surface Cal Performed: Wed Apr 23 01:07:33 2014
 Downhole Cal Performed: Mon Jul 28 12:02:56 2008
 After Survey Verification Performed: Mon Jul 28 12:02:56 2008

Surface Calibration

Loop:	Readings		V	References		mmho/m	Results	
	Air	Loop		Air	Loop		m	b
Deep	-0.014	0.629		0.000	400.000		650.000	-22.000

Medium	0.039	0.728	V	0.000	464.000	mmho/m	660.000	-28.000
Internal:	Zero	Cal		Zero	Cal		m	b
Deep	0.011	0.610	V	0.000	400.000	mmho/m	667.135	-7.256
Medium	0.005	0.712	V	0.000	464.000	mmho/m	655.677	-3.102

Downhole Calibration								
	Readings			References			Results	
	Zero	Cal		Zero	Cal		m'	b'
Deep	0.000	0.000	mmho/m	14.508	388.384	mmho/m	1.000	0.000
Medium	0.000	0.000	mmho/m	166.367	504.400	mmho/m	1.000	0.000
LL3		7.500	V		1400.000	Ohm-m		
		0.000	V		20.000	Ohm-m		
		-7.200	V		4000.000	mmho-m		

After Survey Verification								
	Readings			Targets			Results	
	Zero	Cal		Zero	Cal		m'	b'
Deep	0.000	0.000	mmho/m	0.000	0.000	mmho/m	0.000	0.000
Medium	0.000	0.000	mmho/m	0.000	0.000	mmho/m	0.000	0.000
LL3		1.000	Ohm-m		1.000	Ohm-m		
		0.000	Ohm-m		0.000	Ohm-m		
		1.000	mmho-m		1.000	mmho-m		

Litho Density Calibration Report
Serial: 003N Model: PRB

Master Calibration		Performed Tue Sep 08 14:14:44 2009						
	Background	Magnesium	Aluminum	Sandstone				
Window 1	2042.6	12312.8	4225.8	13758.4				cps
Window 2	1855.8	10134.7	3624.2	11113.1				cps
Window 3	1639.4	6760.2	2716.3	7260.3				cps
Window 4	466.4	469.2	466.1	476.5				cps
Long Space	0.0	8278.9	1768.4	9257.4				cps
Short Space	2.2	2377.3	1544.1	2574.2				cps
Rho		1.7100	2.5900	1.3800				g/cc
Pe		0.0000	2.5700	1.5500				
Rib Angle	: 44.4	Rib Slope	: 0.979	Density/Spine Ratio				: 0.549
Spine Angle	: 74.4	Spine Slope	: 3.577	Spine Intercept				: -18.8

Before Survey Verification		Performed Wed Dec 31 18:00:00 1969						
Window 1	0.0	0.0	0.0	0.0				cps
Window 2	0.0	0.0	0.0	0.0				cps
Window 3	0.0	0.0	0.0	0.0				cps
Window 4	0.0	0.0	0.0	0.0				cps
Long Space	0.0	0.0	0.0	0.0				cps
Short Space	0.0	0.0	0.0	0.0				cps
Measured Rho		0.0000	0.0000	0.0000				g/cc
Measured Correction		0.0000	0.0000	0.0000				g/cc
Measured Pe			0.0000	0.0000				

After Survey Verification		Performed Wed Dec 31 18:00:00 1969						
Window 1	0.0	0.0	0.0	0.0				cps
Window 2	0.0	0.0	0.0	0.0				cps

Window 3	0.0	0.0	0.0	0.0	cps
Window 4	0.0	0.0	0.0	0.0	cps
Long Space	0.0	0.0	0.0	0.0	cps
Short Space	0.0	0.0	0.0	0.0	cps
Measured Rho		0.0000	0.0000	0.0000	g/cc
Measured Correction		0.0000	0.0000	0.0000	g/cc
Measured Pe			0.0000	0.0000	

Compensated Neutron Calibration Report

Serial Number: 070808
Tool Model: Probe

PRE-SURVEY VERIFICATION

Detector	Readings	Measured	Target
Short Space	cps		
Long Space	cps	pu	pu

POST-SURVEY VERIFICATION

Detector	Readings	Measured	Target
Short Space	cps		
Long Space	cps	pu	pu

Gamma Ray Calibration Report

Serial Number: 070558
Tool Model: OPEN_GR
Performed: Mon Mar 24 01:53:40 2014

Calibrator Value: 1.0 GAPI

Background Reading: 0.0 cps
Calibrator Reading: 1.0 cps

Sensitivity: 0.3000 GAPI/cps