



MIDWEST SURVEYS
 LOGGING - PERFORATING - CONSULTING SERVICES
 P.O. Box 68, Oswatomie, KS 66506-4
 913 / 755 - 2128

GAMMA RAY / NEUTRON / CCL

File No.

Company **Altavista Energy, Inc.**
 Well **West Goetz No. A-21**
 Field **Paola - Rantoul**
 County **Miami** State **Kansas**
 Location **3135' FSL & 1155' FEL**
NW-SW-SE-NE
 Other Services **Perforate**

Sec. **9** Twp. **18S** Rge. **22E** Elevation **897'**
 Permanent Datum **GL** K.B. **NA**
 Log Measured From **GL** D.F. **NA**
 Drilling Measured From **GL** G.L. **897'**

Date **09-18-2014**
 Run Number **One**
 Depth Driller **640.0**
 Depth Logger **505.0**
 Bottom Logged Interval **504.0**
 Top Log Interval **20.0**
 Fluid Level **Full**
 Type Fluid **Water**
 Density / Viscosity **NA**
 Salinity - PPM Cl **NA**
 Max Recorded Temp **NA**
 Estimated Cement Top **0.0**
 Equipment No. **107** Location **Oswatomie**
 Recorded By **Steve Wandisch**
 Witnessed By **Doug Evans**

BORE-HOLE RECORD				CASING RECORD			
RUN	BIT	FROM	TO	SIZE	WGT.	FROM	TO
One	9.875"	0.0	21.0	7.00"	17.0 #	0.0	21.0
Two	5.625"	21.0	640.0	2.875"	6.5 #	0.0	566.90
				Baffle	Set	At	506.20

<<< Fold Here >>>

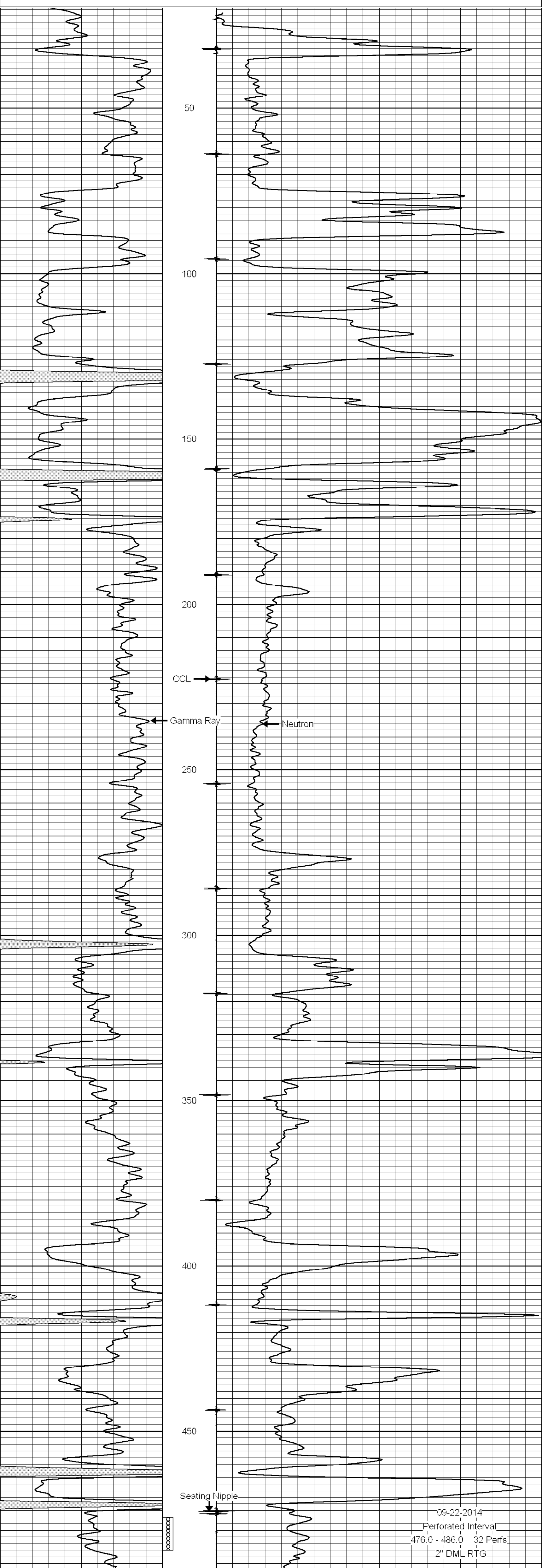
All interpretations are opinions based on inferences from electrical or other measurements and we cannot and do not guarantee the accuracy or correctness of any interpretation, and we shall not, except in the case of gross or willful negligence on our part, be liable or responsible for any loss, costs, damages, or expenses incurred or sustained by anyone resulting from any interpretation made by any of our officers, agents or employees. These interpretations are also subject to our general terms and conditions set out in our current Price Schedule.

Comments

Drilling Contractor :
 Town Oilfield Services, Inc.

Database File: goetz west 21a.db
 Dataset Pathname: pass1
 Presentation Format: gr-n-ccl
 Dataset Creation: Thu Sep 18 14:35:23 2014 by Log SCH 111116
 Charted by: Depth in Feet scaled 1:240

0	Gamma Ray (cps)	150	-1 CCL 1	10	Neutron (cps)	2100
150	Gamma Ray (cps)	300				



09-22-2014
 Perforated Interval
 476.0 - 486.0 32 Perfs
 2" DML RTG

0	Gamma Ray (cps)	150	-1 CCL 1	10	Neutron (cps)	2100
150	Gamma Ray (cps)	300				