



Pioneer Energy Services

Computer Processed Interpretation

API No. 15-147-20735-00-00

Company **Gore Oil Company**

Well **Demuth #9**

Field **Ray**

County **Phillips** State **Kansas**

Location **2300' FSL & 1750' FWL**

Other Services
DIL/CNL/CDL
MEL

Sec: **22** Twp: **5S** Rge: **20W**

Elevation

Permanent Datum **Ground Level** Elevation **2188**

Log Measured From **Kelly Bushing** **8** Ft. Above Perm. Datum

Drilling Measured From **Kelly Bushing** **8** Ft. Above Perm. Datum

K.B. 2196
D.F. 2188
G.L. 2188

Date Recorded **05/30/2014**

Depth Logger **3661** **Curve Definitions**

SW **Water Saturation**

SXO **Water Saturation In The Flushed Zone**

VCL **Volume Of Clay**

PHIE **Density - Neutron Crossplot Shale Corrected**

BWV **Bulk Volume Water**

BWMSXO **Bulk Volume Water In Flushed Zone**

DCAL **Caliper**

SPC **SP Corrected For Baseline**

DGA **Apparent Grain Density**

Payflag **If: PHIE > 2 %, VCL < 40 %, SPC > -10 , SW < 50 % & DCAL < 11**

Recorded By **D. Schmidt**

Witnessed By **Chuck Schmaltz**

Analysis By **Dale Legleiter**

<<< Fold Here >>>

All interpretations are opinions based on inferences from electrical or other measurements and we cannot and do not guarantee the accuracy or correctness of any interpretation, and we shall not, except in the case of gross or willful negligence on our part, be liable or responsible for any loss, costs, damages, or expenses incurred or sustained by anyone resulting from any interpretation made by any of our officers, agents or employees. These interpretations are also subject to our general terms and conditions set out in our current Price Schedule.

Comments

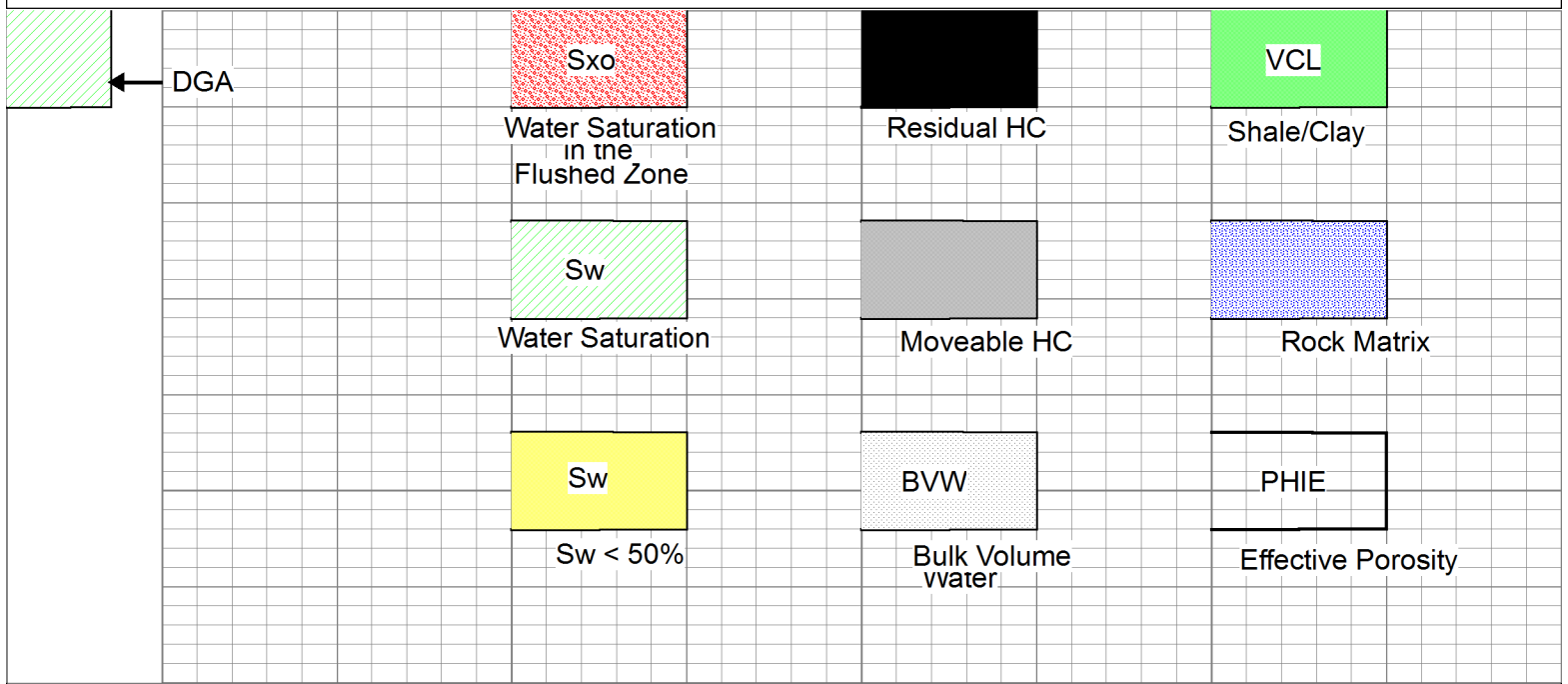
Thank you for using Pioneer Energy Services
www.pioneer.com
785 625 3858

Logan,
South to Big Bear Rd,
1/2 South, 1/4 East,
North and East Into

Database File: c:\warrior\data\cross plots\2wxplt.db
Dataset Pathname: litho
Presentation Format: 2wxplt

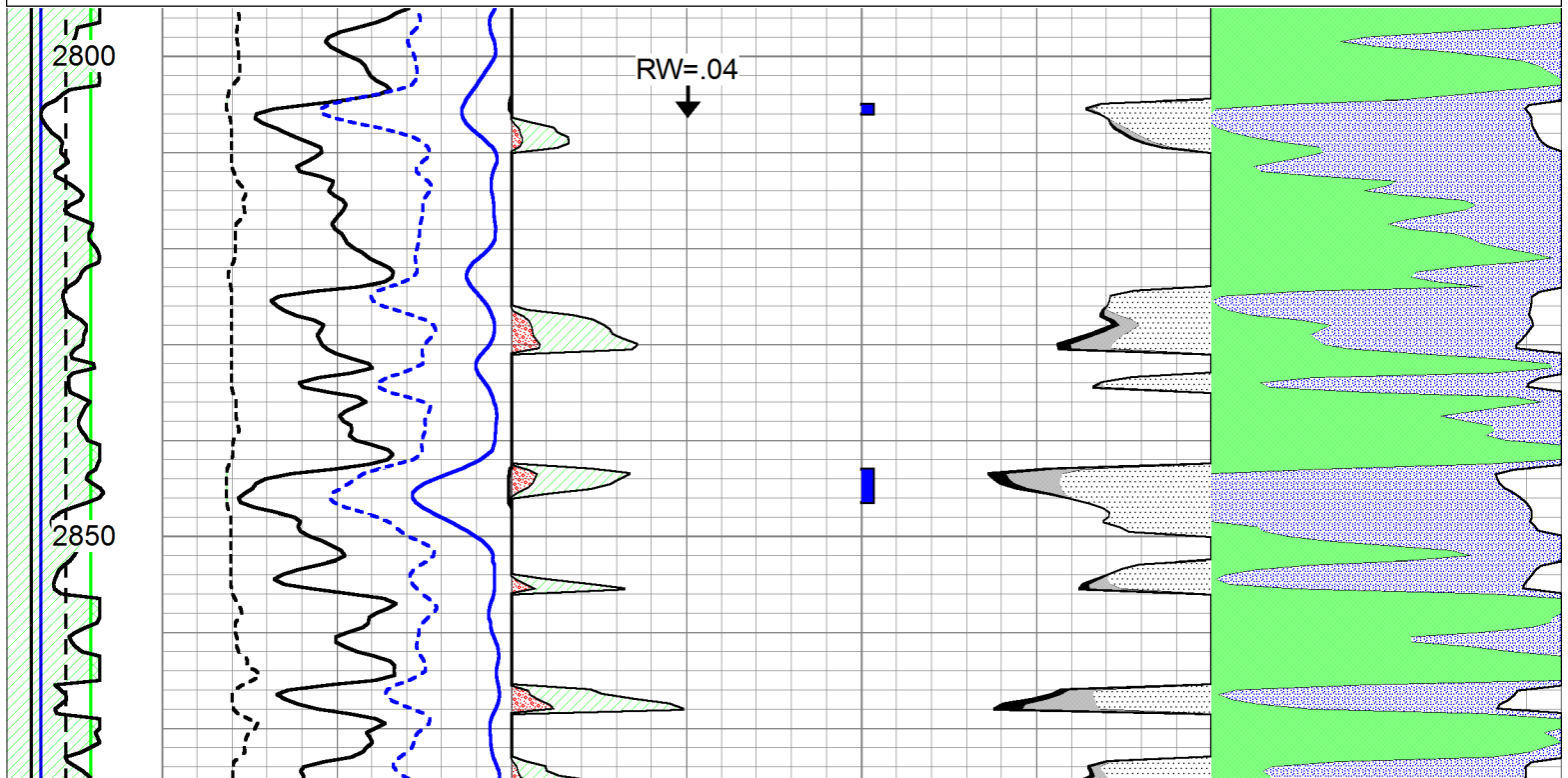
Dataset Creation:
Charted by:

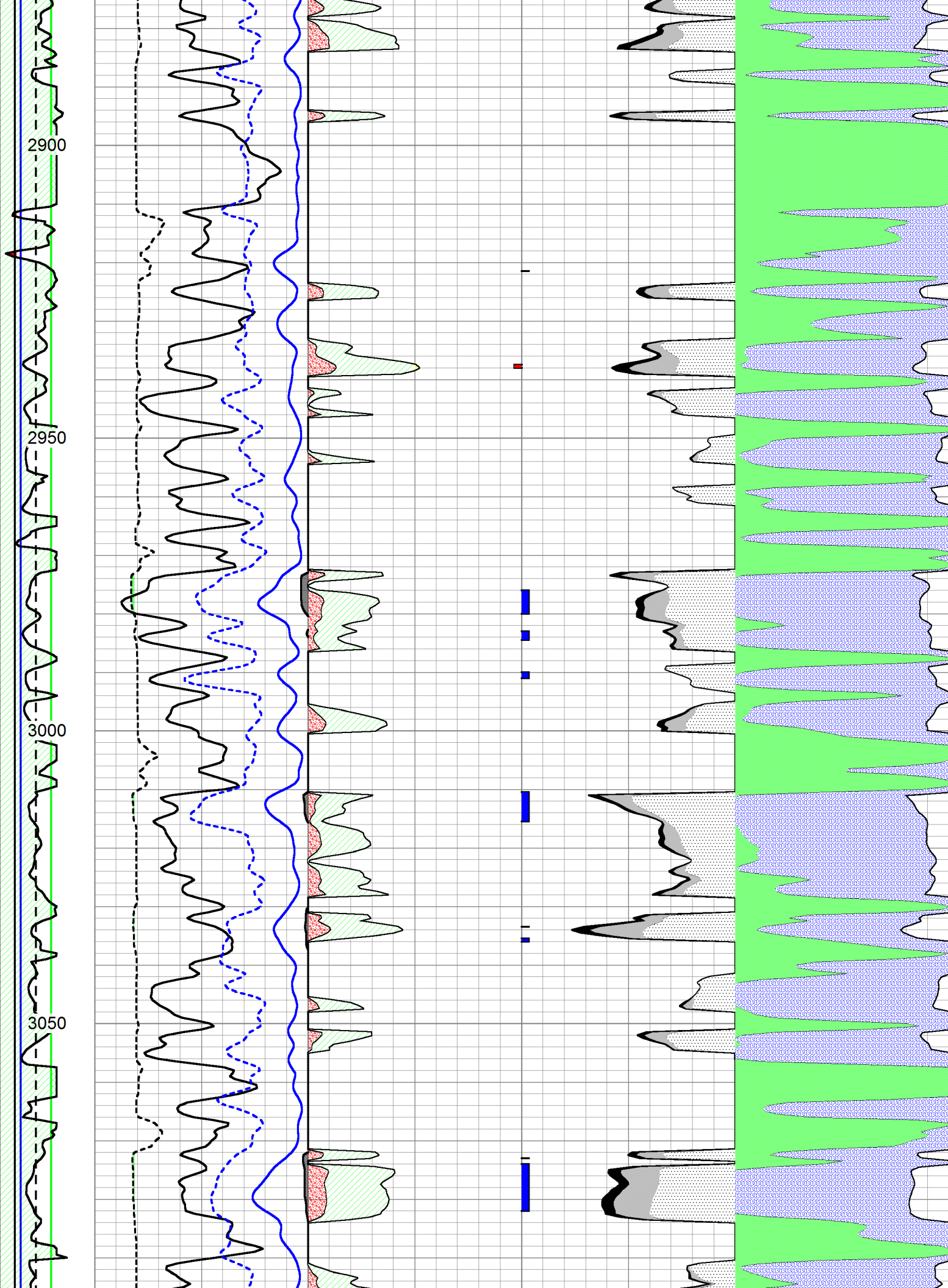
Thu Apr 24 14:32:02 1997
Depth in Feet scaled 1:240

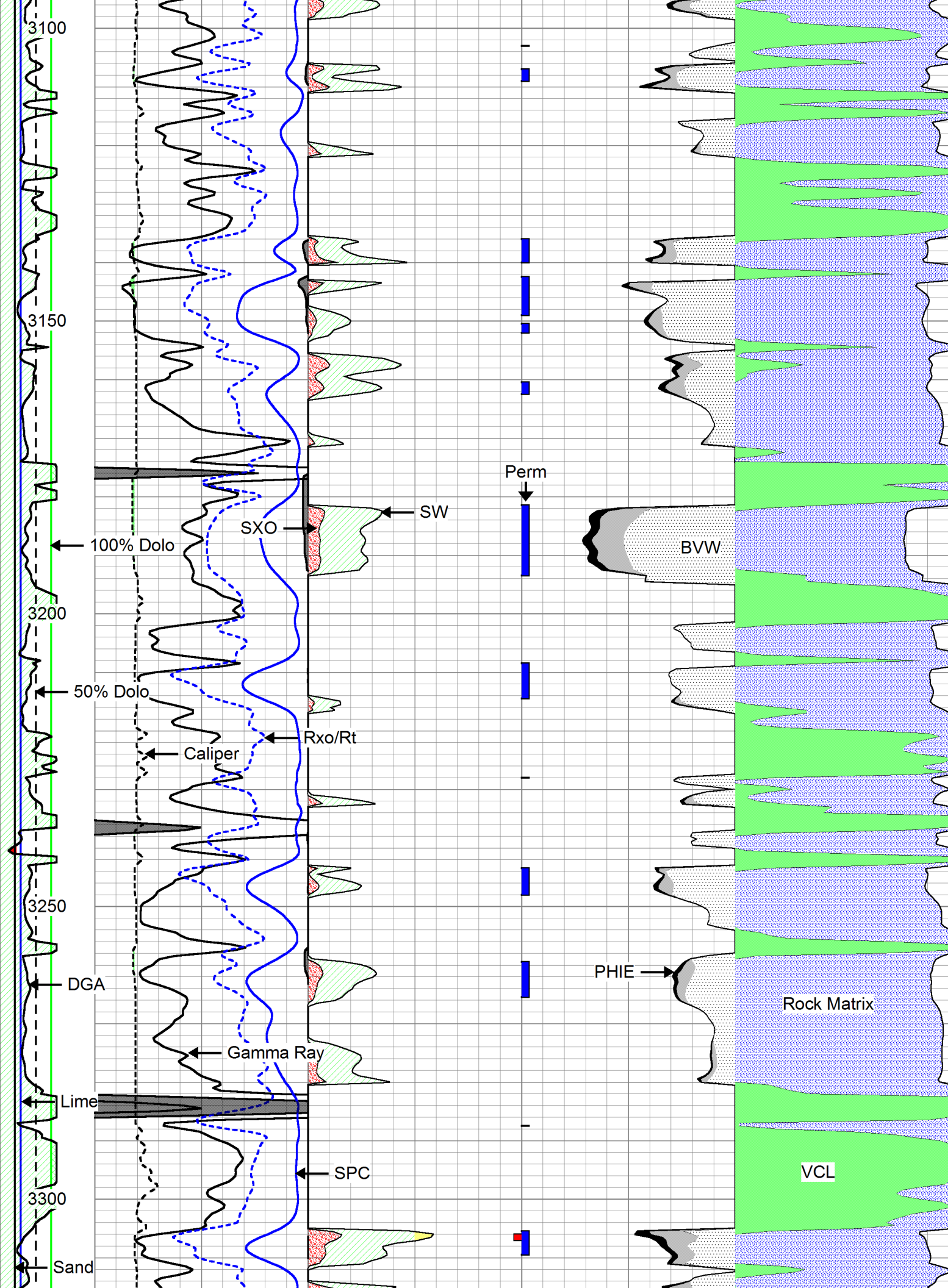


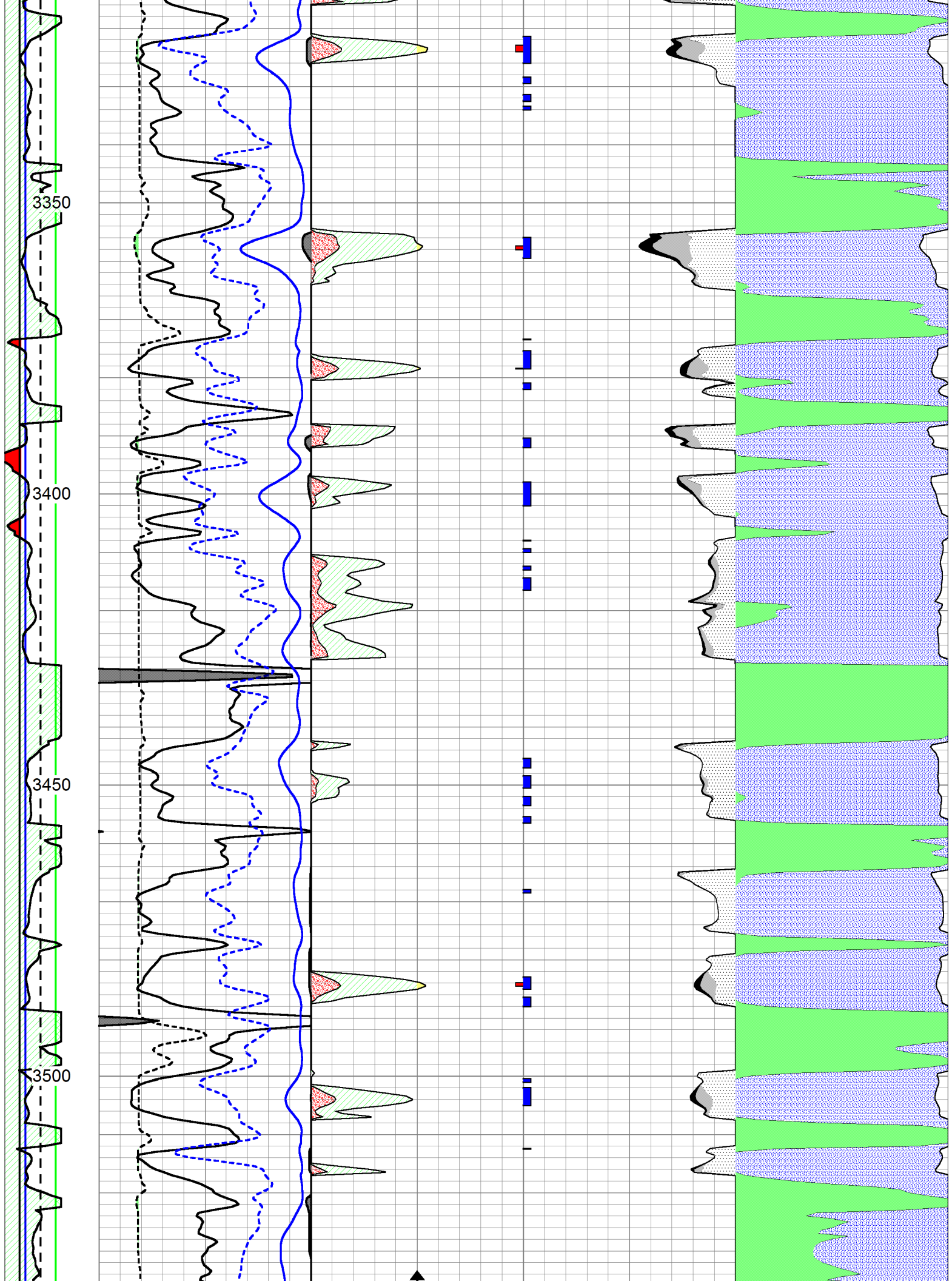
Database File: c:\warrior\data\gore_demuth #9\gore_demuth_9hd.db
 Dataset Pathname: cpi/gorecpi
 Presentation Format: calc
 Dataset Creation: Sat May 31 15:03:36 2014
 Charted by: Depth in Feet scaled 1:240

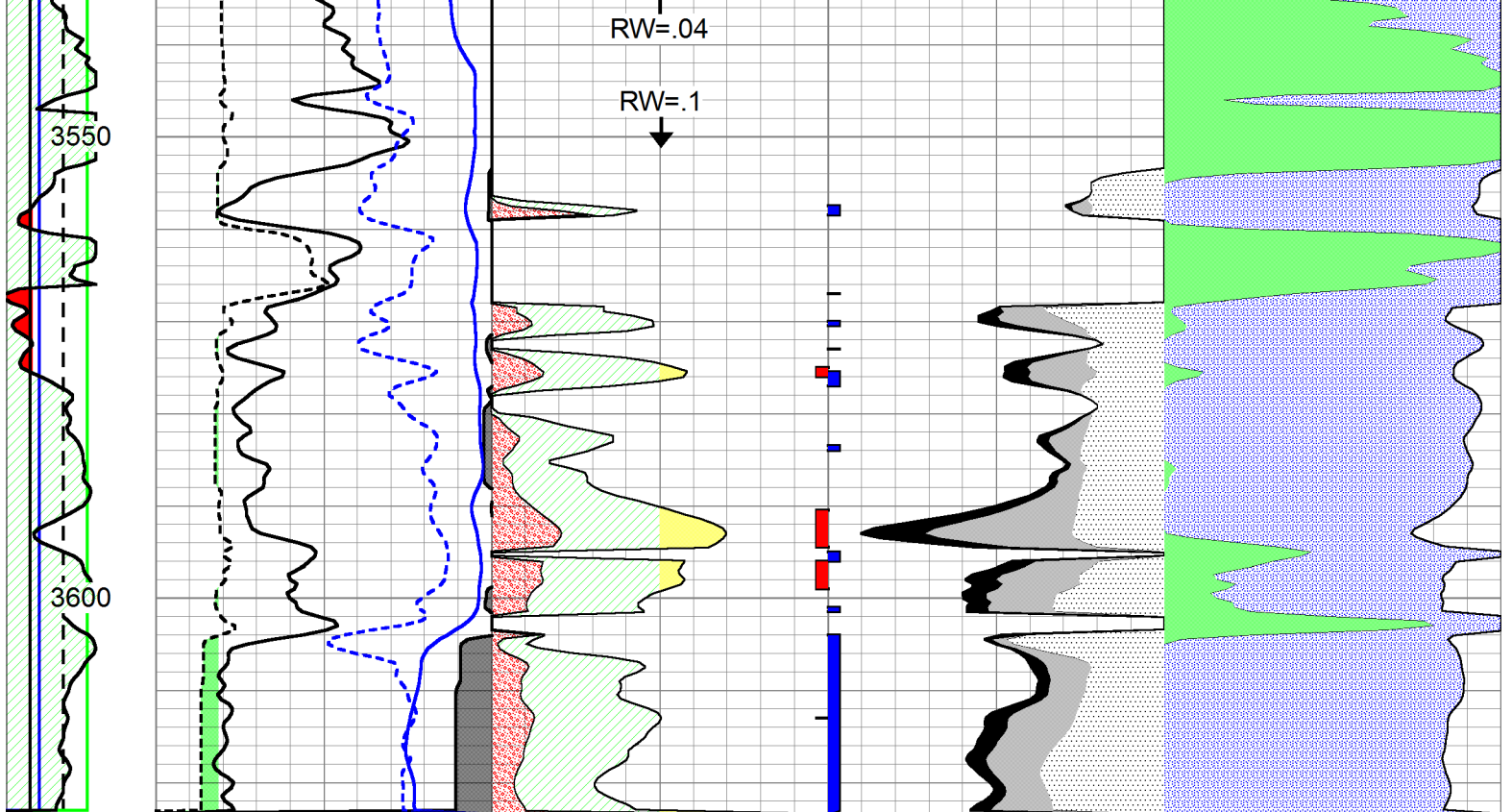
DGA	0	Gamma Ray	150	1	SW	0	0.3	PHIE	0	0	VCL	1	
2.6	3.1	6	DCAL	16	30	PAYFLAG	0	0.3	BVW	0	1	PHIE	0
		-150	SPC (mV)	0	1	SXO	0	0	PERM	30			
							0.3	BVWSXO	0				











DGA	0	Gamma Ray	150	1	SW	0	0.3	PHIE	0	0	VCL	1	
2.6	3.1	6	DCAL	16	30	PAYFLAG	0	0.3	BVW	0	1	PHIE	0
		-150	SPC (mV)	0	1	SXO	0	0	PERM	30			
							0.3	BVWSXO	0				