



**MIDWEST SURVEYS**  
 LOGGING - PERFORATING - CONSULTING SERVICES  
 P.O. Box 68, Osawatomie, KS 66064  
 913 / 735 - 2128

**GAMMA RAY / NEUTRON / CCL**

File No.

Company: **Altavista Energy, Inc.**  
 Well: **Marjorie Crofts No. - 16**  
 Field: **Neosho Falls - LeRoy**  
 County: **Coffey** State: **Kansas**

Location: **2805 FSL & 4455 FEL  
 SW-SE-SW1/4NW**

Other Services: **Perforate**

Sec. 14  
 Permament Datum: **Typ. 22s** Elevation: **1041'**  
 Log Measured From: **GL** K.B. NA  
 Drilling Measured From: **GL** D.F. NA  
 G.L. 1041'

Date: **09-12-2014**

Run Number: **One**

Depth Logger: **1123.0**

Bottom Logged Interval: **1084.2**

Top Log Interval: **200.0**

Fluid Level: **Full**

Type Fluid: **Water**

Density / Viscosity: **NA**  
 Salinity - PPM Cl: **NA**  
 Max. Recorded Temp: **NA**

Estimated Cement Top: **0.0**  
 Equipment No.: **107** Location: **Osawatomie**  
 Recorded By: **Steve Wandlisch**  
 Witnessed By: **Doug Evans**

BORE-HOLE RECORD		CASING RECORD				
NO.	BIT	TO	SIZE	WGT.	FROM	TO
One	12.25"	0.0	7.00"	17.0#	0.0	41.80
Two	5.875"	41.8	1123.0	2.875"	6.5#	1116.45
				Ballie	Set	At
						1090.40

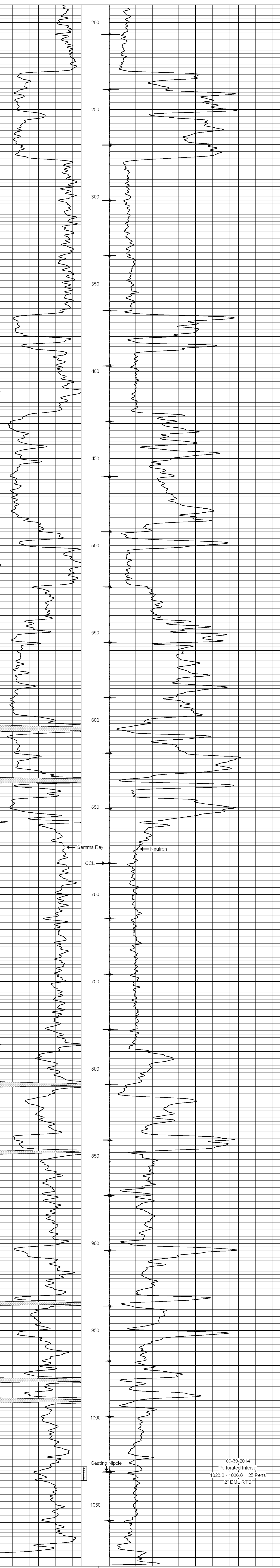
<<< Fold Here >>>

All interpretations are opinions based on inferences from electrical or other measurements and we cannot and do not guarantee the accuracy or correctness of any interpretation, and we shall not, except in the case of gross or willful negligence on our part, be liable or responsible for any loss, costs, damages, or expenses incurred or sustained by anyone resulting from any interpretation made by any of our officers, agents or employees. These interpretations are also subject to our general terms and conditions set out in our current Price Schedule.

Comments

Drilling Contractor :  
 Finney Drilling Company

Database File: m crofts 16.db  
 Dataset Pathname: pass1  
 Presentation Format: gr-n-ccl  
 Dataset Creation: Fri Sep 12 10:15:27 2014 by Log SCH 111116  
 Charted by: Depth in Feet scaled 1:240



09-30-2014  
 Perforated Interval  
 1028.0 - 1036.0 25 Perfs  
 2" DML RTG