

MIDWEST SURVEYS
 LOGGING - PERFORATING - CONSULTING SERVICES
 P.O. Box 688, Osawatomie, KS 66064
 913.735.2128

GAMMA RAY / NEUTRON / CCL

File No. _____
 Company **Altavista Energy, Inc.**
 Well **Marjorie Crofts No.-24**
 Field **Neosho Falls / Leroy**
 County **Coffey** State **Kansas**
 Location _____

Location **3465' FSL & 3795' FEL**
SWNW-SE-NW
 Sec. 14 Twp. 22s Rge. 16e
 Permian Datum **GL** Elevation **1044'**
 Log Measured From **GL** K.B. NA
 Drilling Measured From **GL** D.F. NA
GL 1044'

Date **09-26-2014**
 Run Number **One**
 Depth Driller **1122.0**
 Bottom Logged Interval **1072.0**
 Top Log Interval **200.0**
 Fluid Level **Fill**

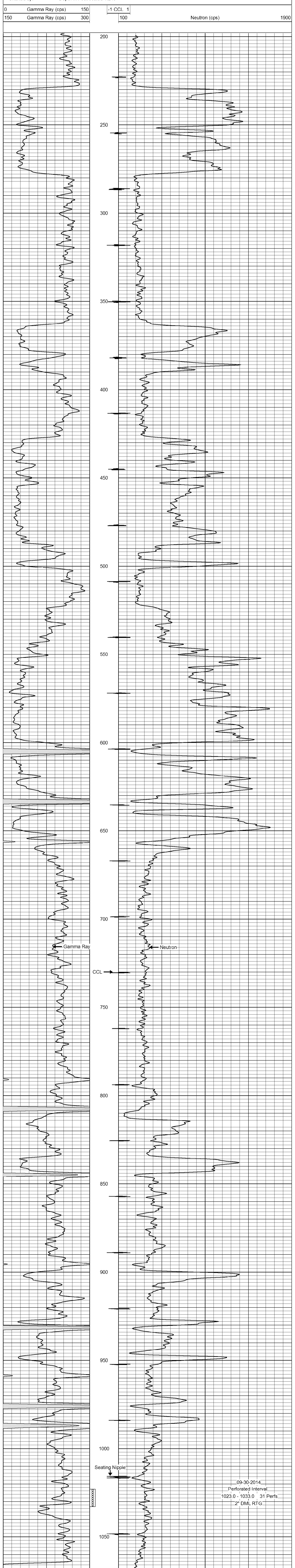
Type Fluid **Water**
 Density / Viscosity **NA**
 Salinity - PPM Cl **NA**
 Max Recorded Temp **NA**
 Estimated Cement Top **0.0**
 Equipment No. **102** Location **Osawatomie**
 Recoded By **Gary Windisch**
 Witnessed By **Doug Evans**

BORE-HOLE RECORD
 R/OIN _____
 BIT _____
 No. **0.0** FROM **42.35** TO **7.00"** SIZE **17.0 #** WGT. **FROM** **42.35** TO **42.35**
 One **12.25"** **0.0** **42.35** **7.00"** **17.0 #** **0.0**
 Two **5.875"** **42.35** **1122.0** **2.875"** **6.5 #** **0.0** **1110.75**
 Battle **Set** **At** **1078.45**

<<< Fold Here >>>
 All interpretations are opinions based on inferences from electrical or other measurements and we cannot and do not guarantee the accuracy or correctness of any interpretation, and we shall not, except in the case of gross or willful negligence on our part, be liable or responsible for any loss, costs, damages, or expenses incurred or sustained by anyone resulting from any interpretation made by any of our officers, agents or employees. These interpretations are also subject to our general terms and conditions set out in our current Price Schedule.

Comments
 Drilling Contractor :
Finney Drilling Company

Database File: m crotts24.db
 Dataset Pathname: pass1
 Presentation Format: gr-n-ccl
 Dataset Creation: Fri Sep 26 14:35:35 2014 by Log SCH 111116
 Charted by: Depth in Feet scaled 1:240



09-30-2014
 Perforated Interval
 1023.0 - 1033.0 31 Perfs
 2" DML RTG