



MIDWEST SURVEYS
 LOGGING - PERFORATING - CONSULTING SERVICES
 P.O. Box 68, Osawatomie, KS 66064
 913 / 735 - 2128

GAMMA RAY / NEUTRON / CCL

File No. _____

Company **RJ Enterprises**

Well **Patton No. 1-1**

Field **Centerville**

County **Anderson** State **Kansas**

Location **4954 FSL & 3018' FEL
NW-NE-NW**

Other Services
Perforate

Sec 22 Twp 21S Rge 21E
 Permanent Datum **GL** Elevation **NA**
 Log Measured From **GL**
 Drilling Measured From **GL**

Date **09-15-2014**

Run Number **One**

Depth Driller **647.0**

Depth Logger **641.0**

Bottom Logged Interval **640.0**

Top Log Interval **20.0**

Fluid Level **Full**

Type Fluid **Water**

Density / Viscosity **NA**

Salinity - PPM Cl **NA**

Max Recorded Temp **NA**

Estimated Cement Top **0.0**

Equipment No. **102** Location **Osawatomie**

Recorded By **Gary Windisch**

Witnessed By **Jason Kent**

BORE-HOLE RECORD

CASING RECORD

TO

FROM

SIZE

WGT.

FROM

TO

NO.

BIT

FROM

TO

ONE

9.875"

0.0

20.0

7.00"

17.0 #

0.0

20.0

TWO

5.625"

20.0

647.0

2.875"

6.5 #

0.0

641.0

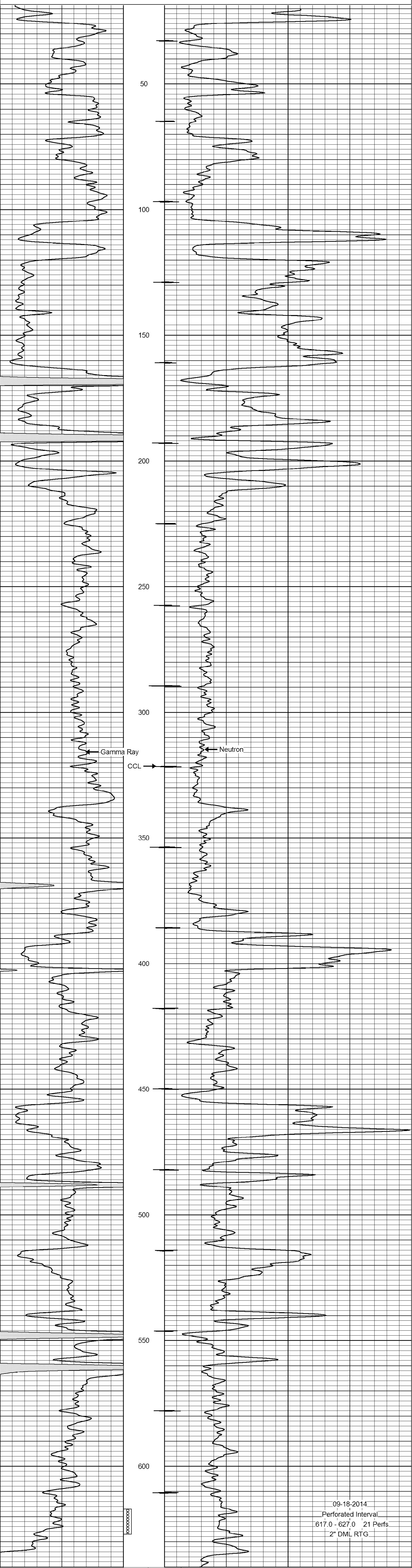
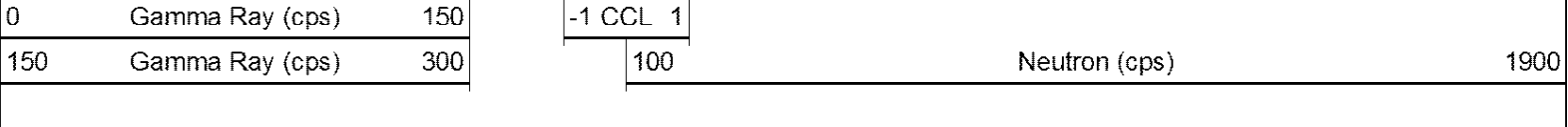
<<< Fold Here >>>

All interpretations are opinions based on inferences from electrical or other measurements and we cannot and do not guarantee the accuracy or correctness of any interpretation, and we shall not, except in the case of gross or willful negligence on our part, be liable or responsible for any loss, costs, damages, or expenses incurred or sustained by anyone resulting from any interpretation made by any of our officers, agents or employees. These interpretations are also subject to our general terms and conditions set out in our current Price Schedule.

Comments

Drilling Contractor :
RJ Enterprises

Database File: patton1i.db
 Dataset Pathname: pass1
 Presentation Format: gr-n-ccl
 Dataset Creation: Mon Sep 15 14:48:38 2014 by Log SCH 111116
 Charted by: Depth in Feet scaled 1:240



09-18-2014
 Perforated Interval
 617.0 - 627.0 21 Perfs
 2" DML RTG

