



Pioneer Energy Services

Dual Induction Log

15-049-22,600-00-00

API No.

Company **Lone Wolf Oil**
 Well **Reeves #B-1**
 Field **Logsdon**
 County **Elk** State **Kansas**

Location **1980' FNL & 200' FWL**
 Sec: **15** Twp: **31S** Rge: **9E**

Other Services
 CNL/CDL
 MEL

Permanent Datum **Ground Level** Elevation **1180**
 Log Measured From **Kelly Bushing** **6** Ft. Above Perm. Datum
 Drilling Measured From **Kelly Bushing**

Date	9/19/2014		Elevation	K.B. 1186 D.F. 1186 G.L. 1180
Run Number	One			
Depth Driller	2650			
Depth Logger	2643			
Bottom Logged Interval	2642			
Top Log Interval	200			
Casing Driller	8.625 @ 210			
Casing Logger	216			
Bit Size	7.875			
Type Fluid in Hole	Chemical			
Salinity, ppm CL	1,150			
Density / Viscosity	9.3 48			
pH / Fluid Loss	9.5 9.0			
Source of Sample	Flowline			
Rm @ Meas. Temp	1.25 @ 64			
Rmf @ Meas. Temp	.94 @ 64			
Rmc @ Meas. Temp	1.69 @ 64			
Source of Rmf / Rmc	Charts			
Rm @ BHT	.78 @ 102			
Operating Rig Time	3 Hours			
Max Rec. Temp. F	102			
Equipment Number	10			
Location	Hays			
Recorded By	C. Desai			
Witnessed By	Joe Baker			

<<< Fold Here >>>

All interpretations are opinions based on inferences from electrical or other measurements and we cannot and do not guarantee the accuracy or correctness of any interpretation, and we shall not, except in the case of gross or willful negligence on our part, be liable or responsible for any loss, costs, damages, or expenses incurred or sustained by anyone resulting from any interpretation made by any of our officers, agents or employees. These interpretations are also subject to our general terms and conditions set out in our current Price Schedule.

Comments

Thank you for using Pioneer Energy Services
www.pioneerenergy.com
 785 625 3858

Moline KS, W to 7 Rd,
 1/2 S, E Into

Database File: c:\warrior\data\lone wolf_reeves # b-1\whd.db
 Dataset Pathname: dil\lwstk
 Presentation Format: dil2in
 Dataset Creation: Fri Sep 19 10:39:40 2014
 Charted by: Depth in Feet scaled 1:600

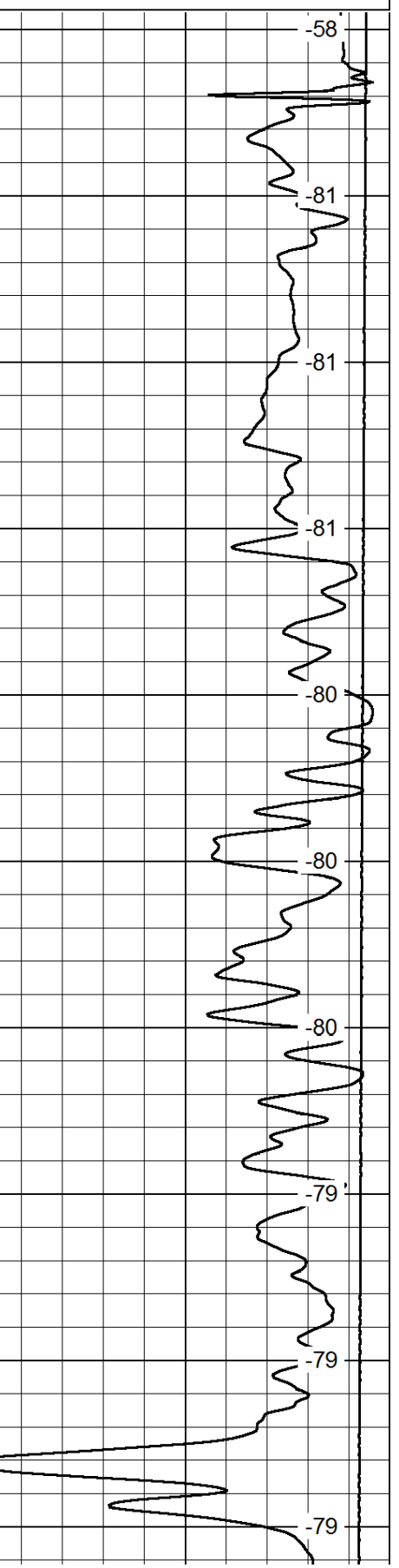
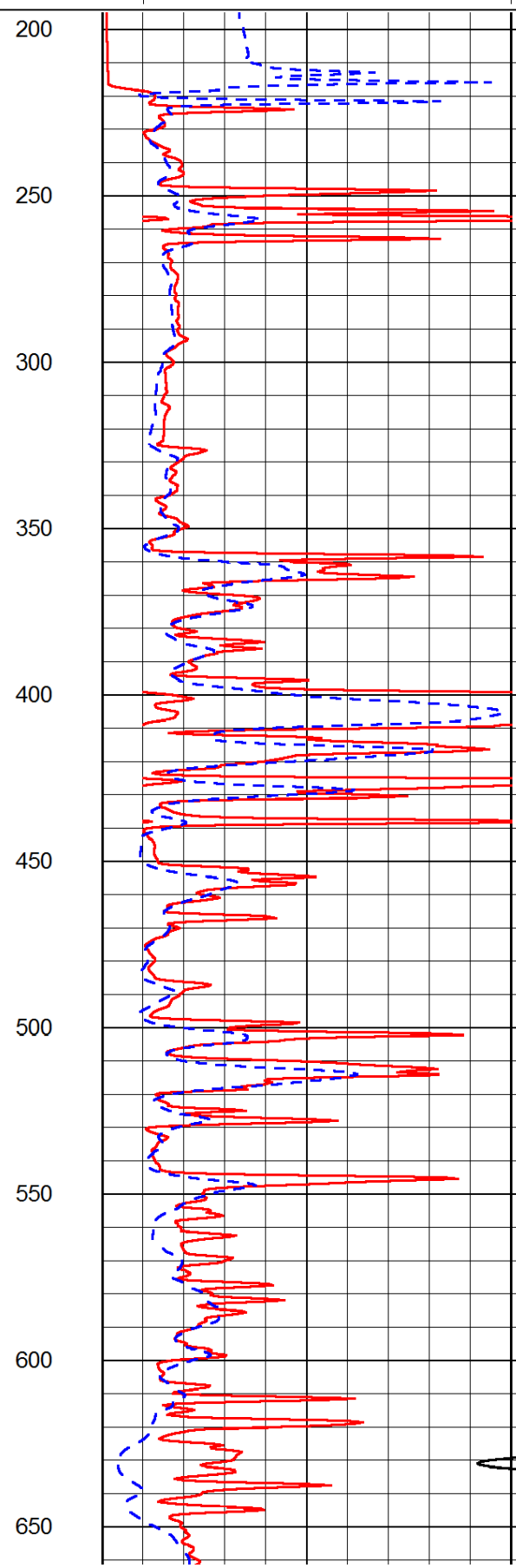
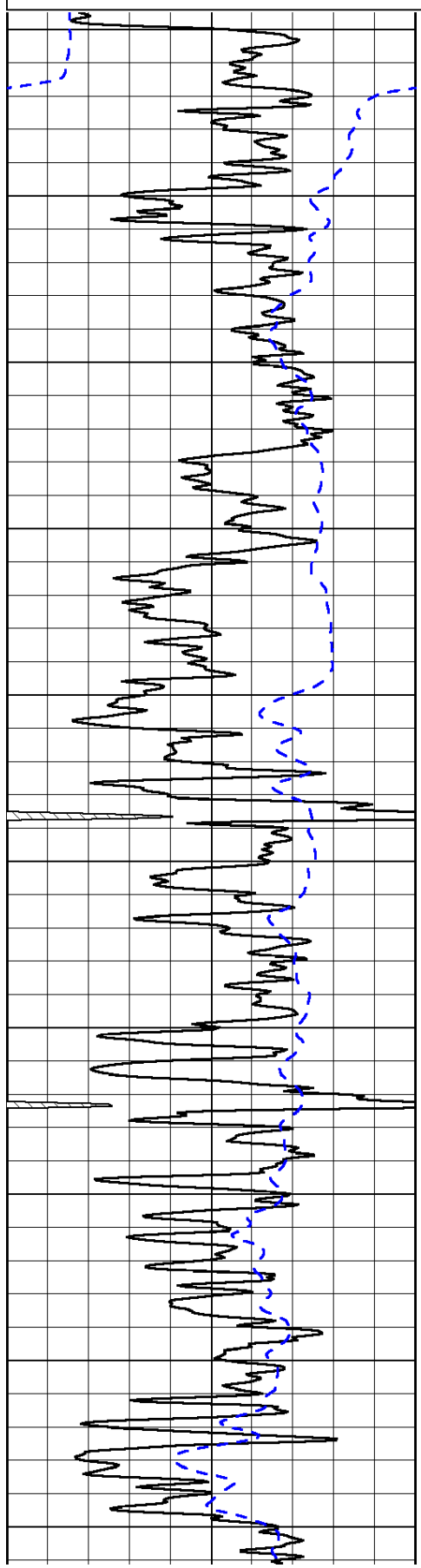
0	Gamma Ray	150
-200	SP (mV)	0

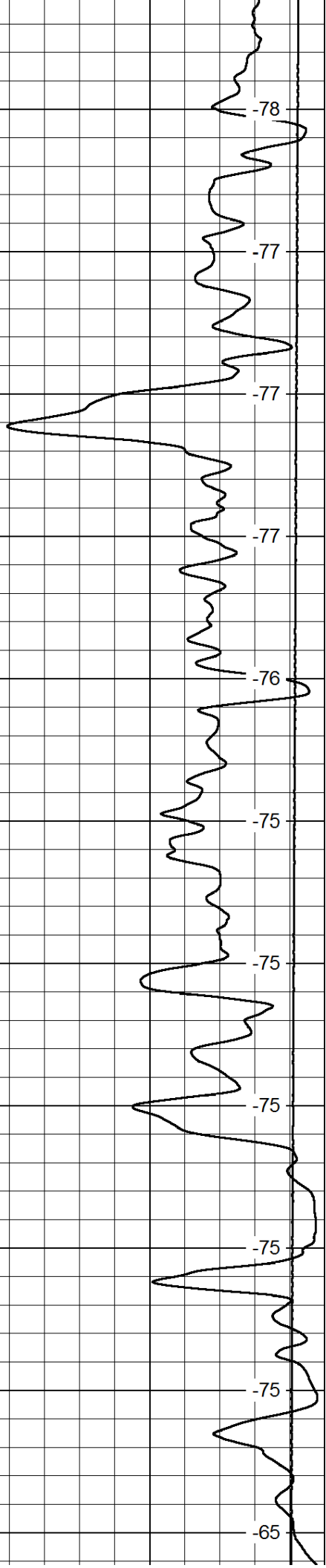
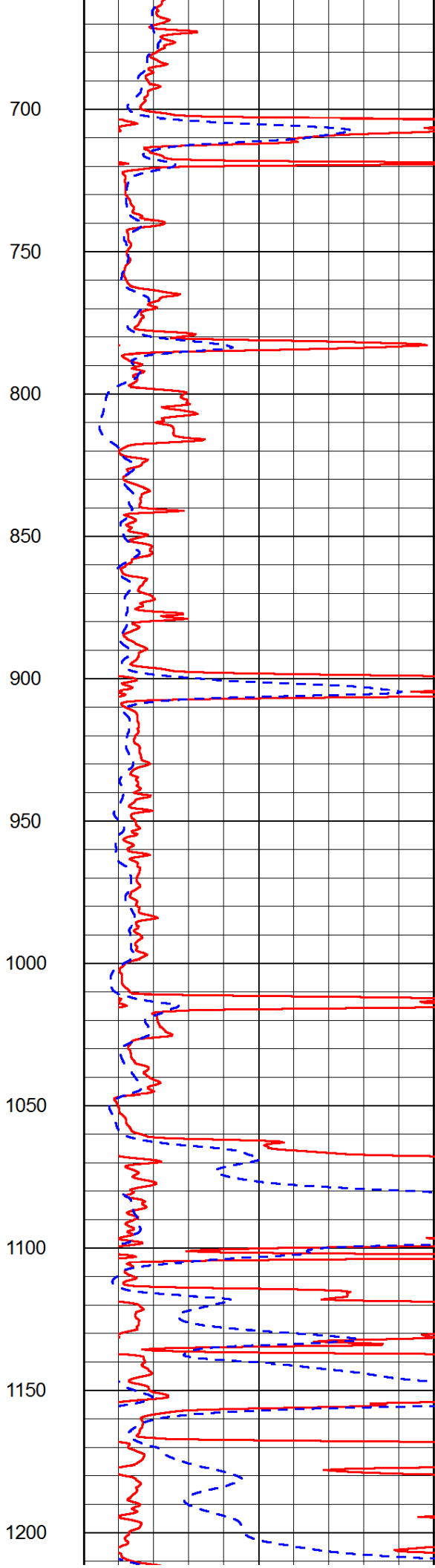
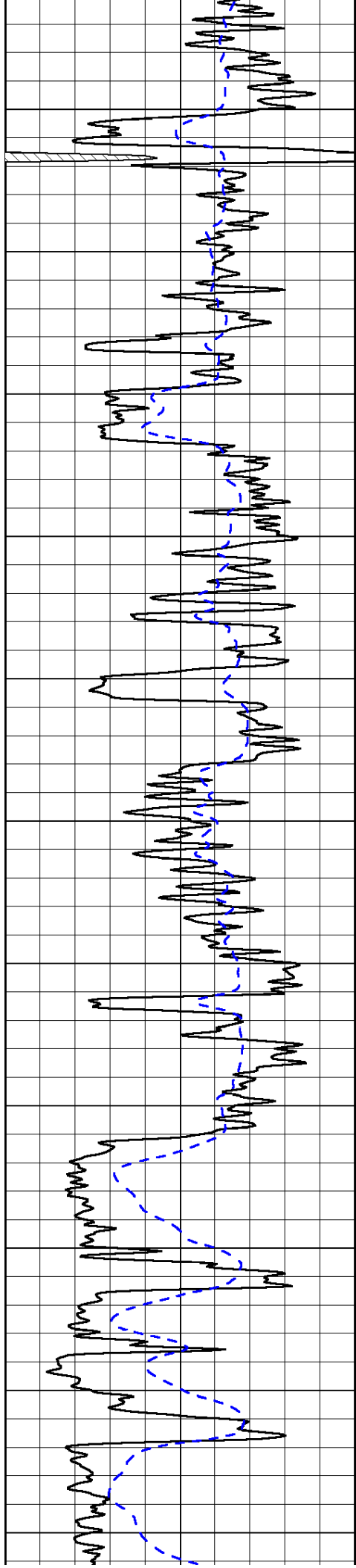
0	Shallow Resistivity	50
0	Deep Resistivity	50

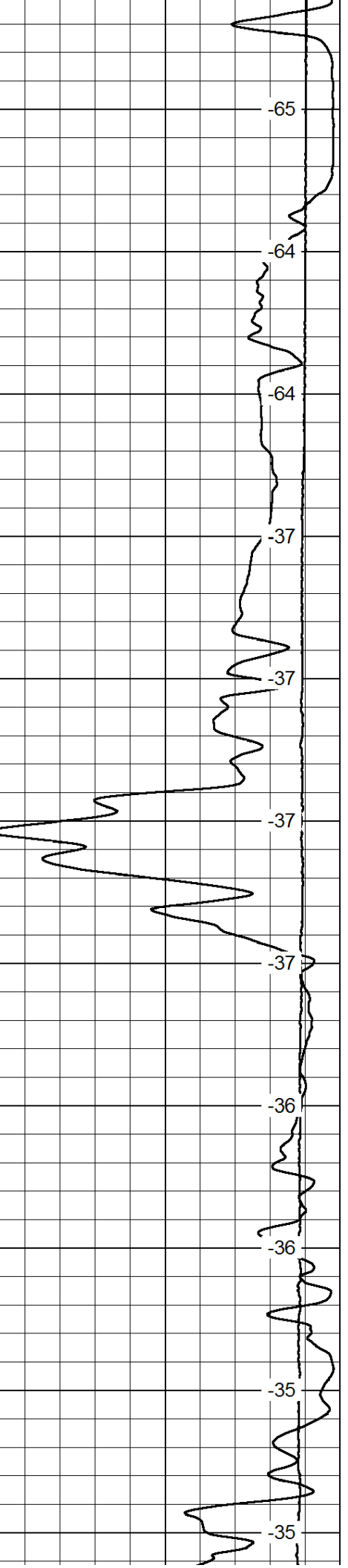
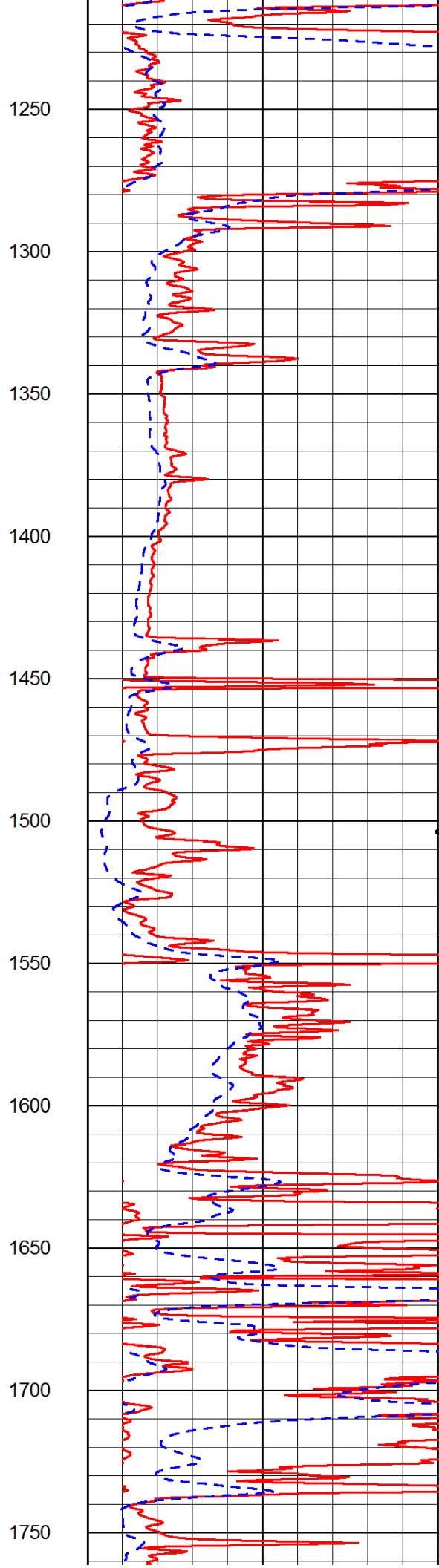
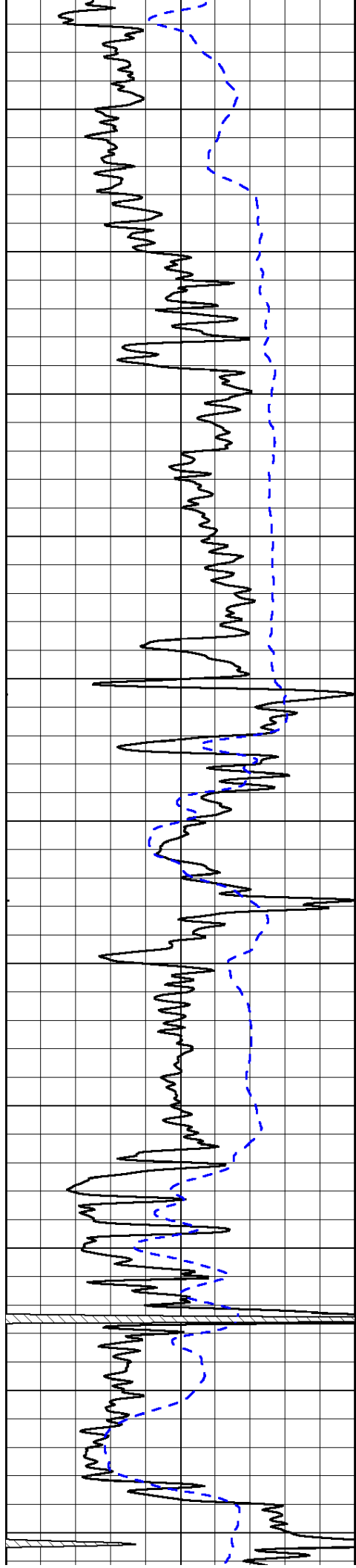
LSPD

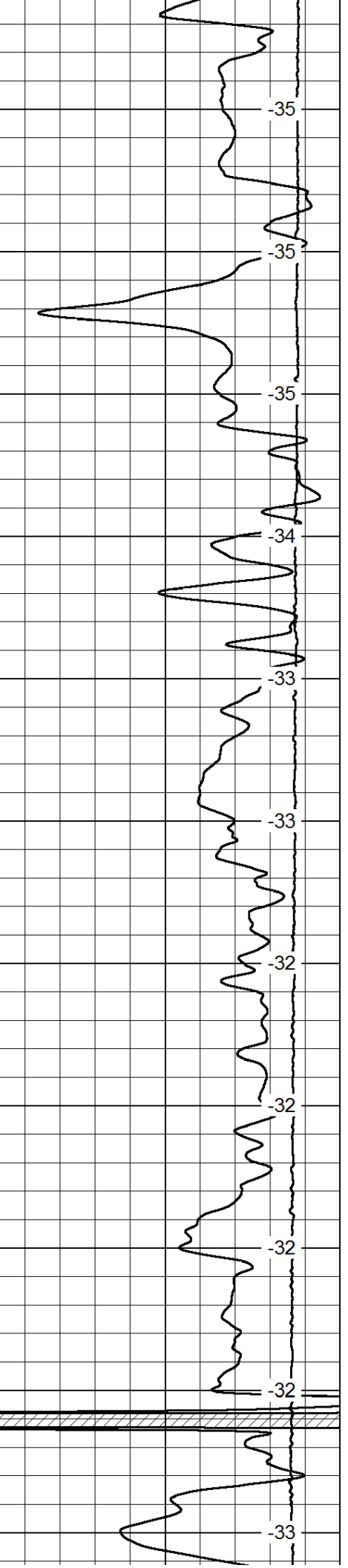
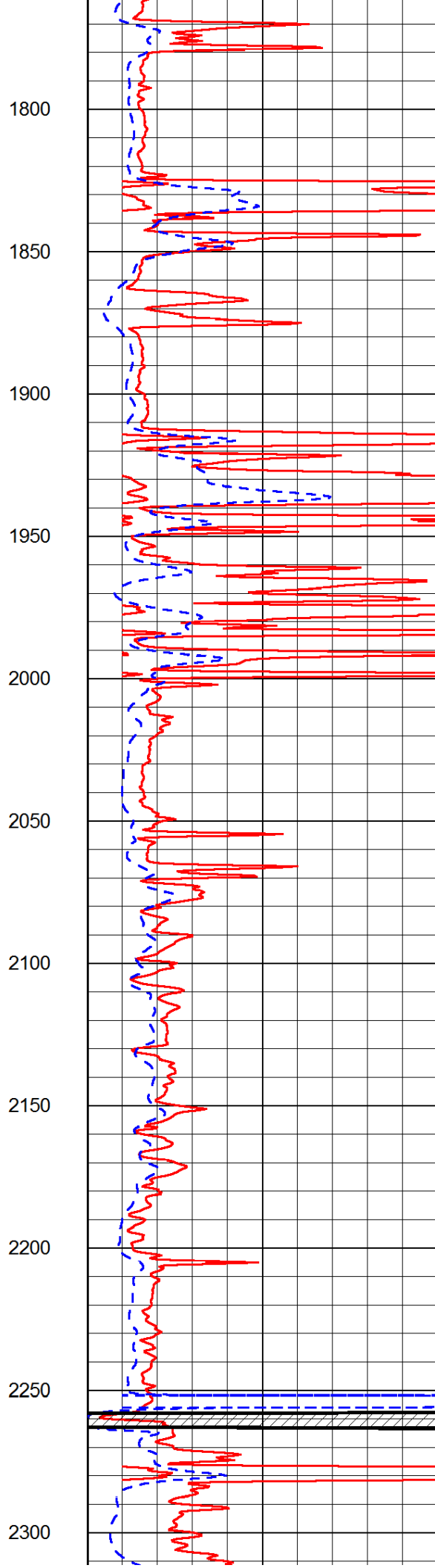
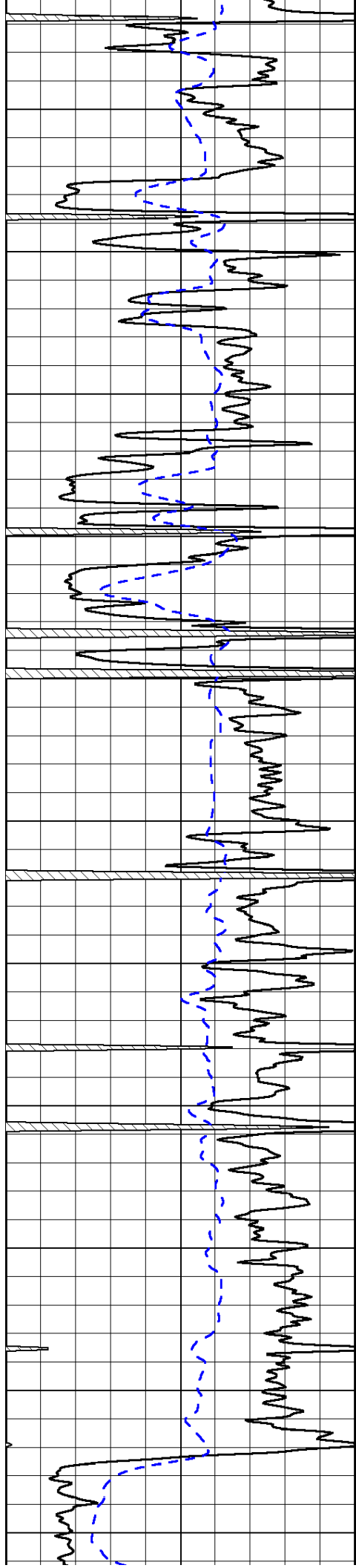
1000	Conductivity	0
15000	Line Tension	0

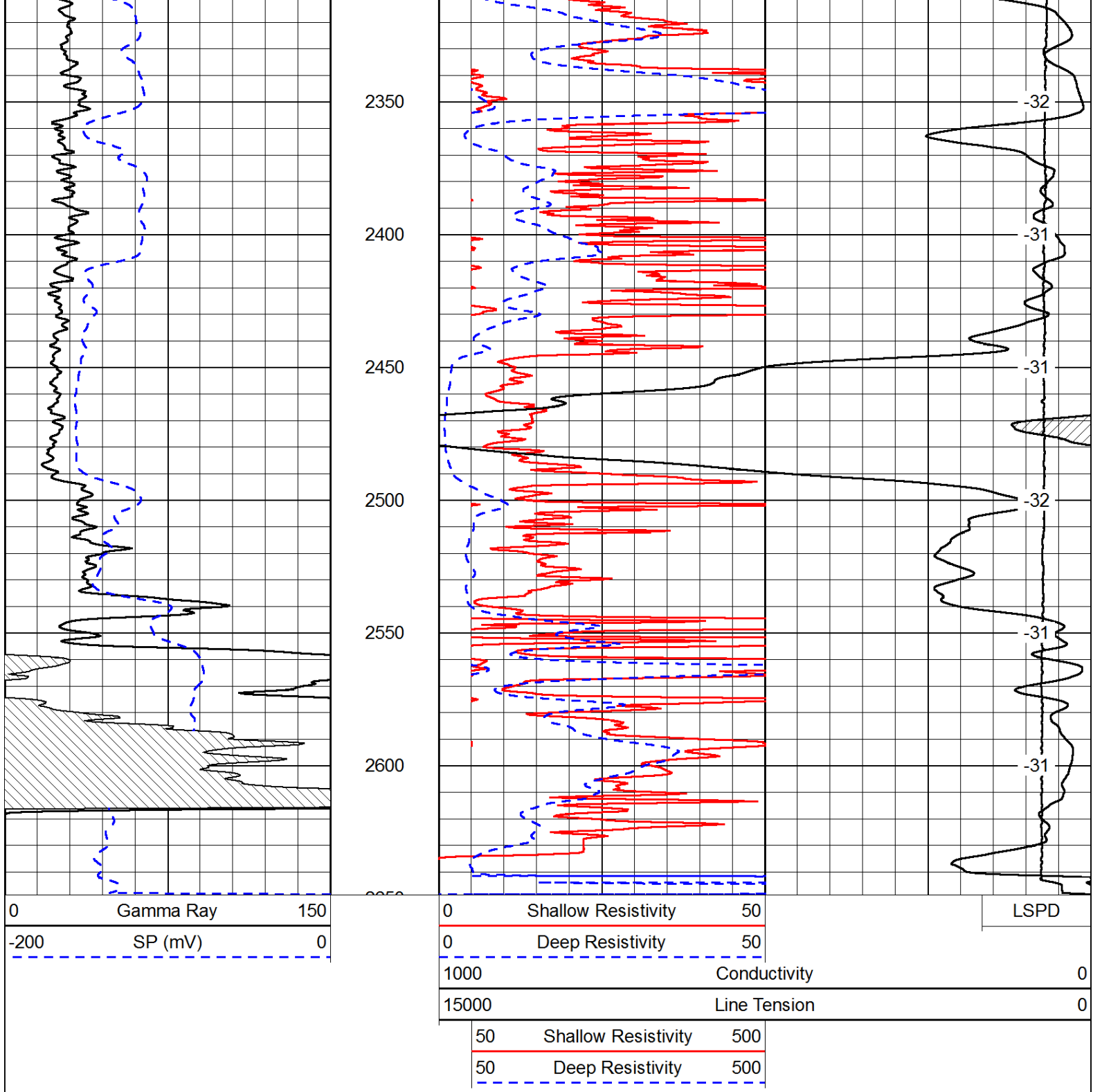
50	Shallow Resistivity	500
50	Deep Resistivity	500



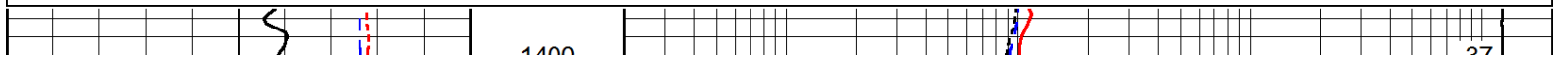
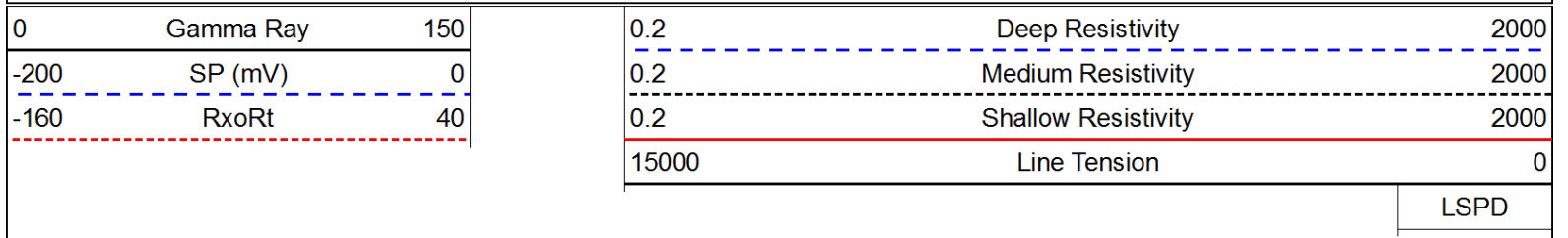


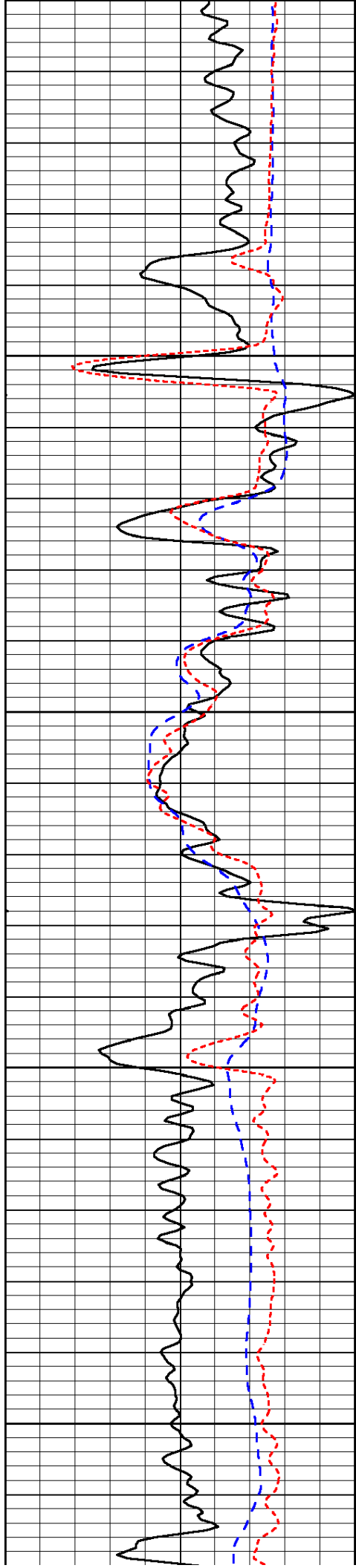




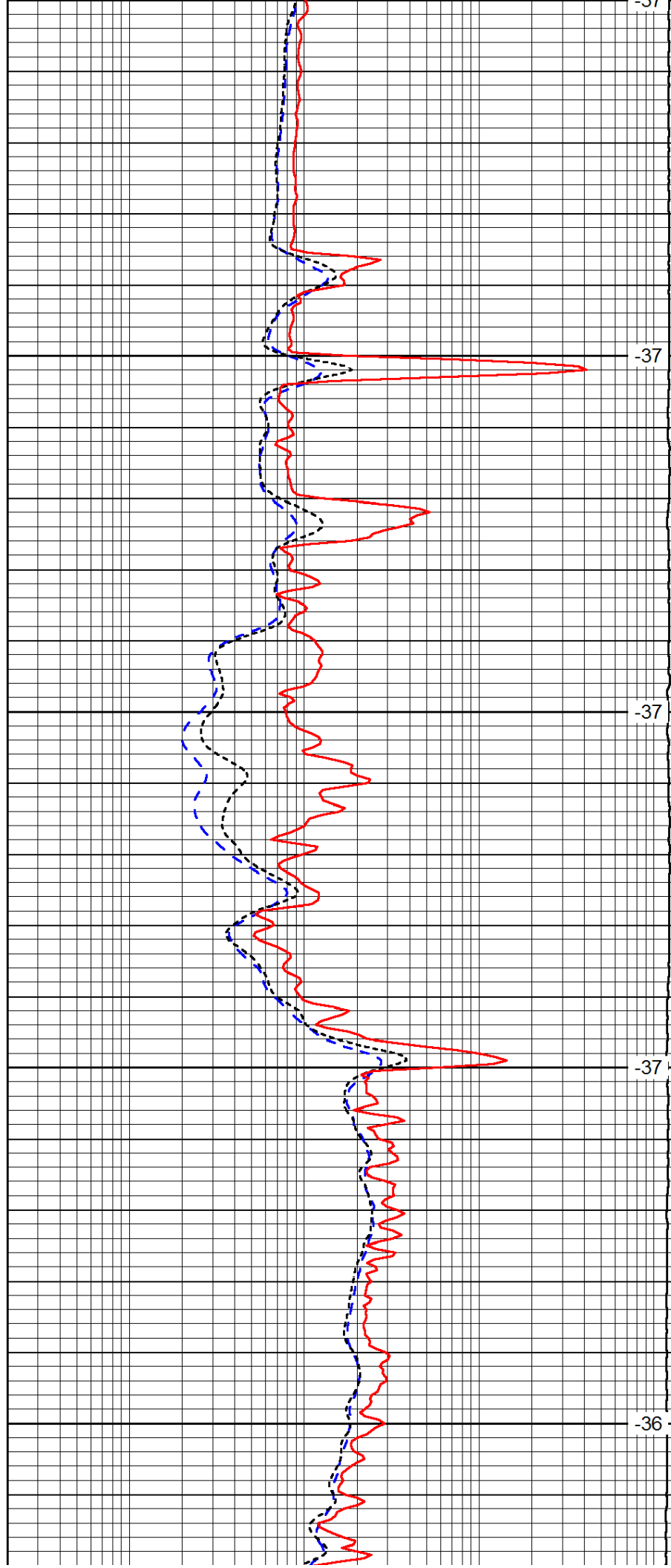


Database File: c:\warrior\data\lone wolf_reeves # b-1\lwhd.db
 Dataset Pathname: dil/lwstk
 Presentation Format: dil
 Dataset Creation: Fri Sep 19 10:39:40 2014
 Charted by: Depth in Feet scaled 1:240

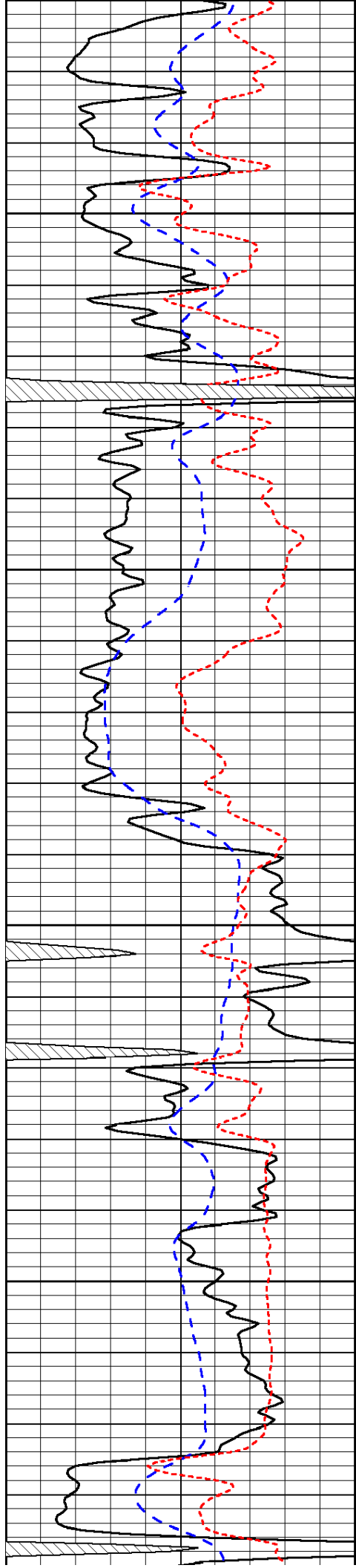




1400
1450
1500
1550
1600



-37
-37
-37
-37
-36

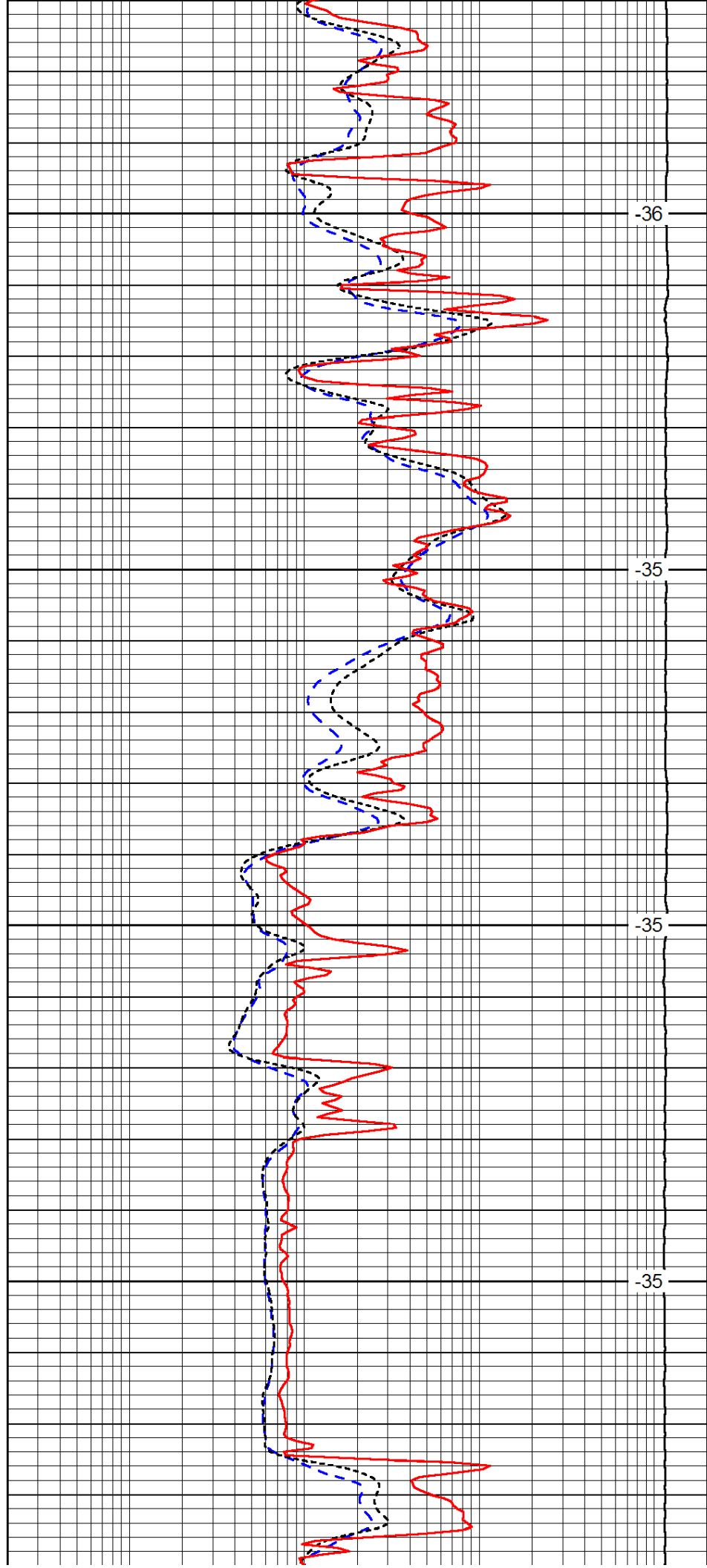


1650

1700

1750

1800

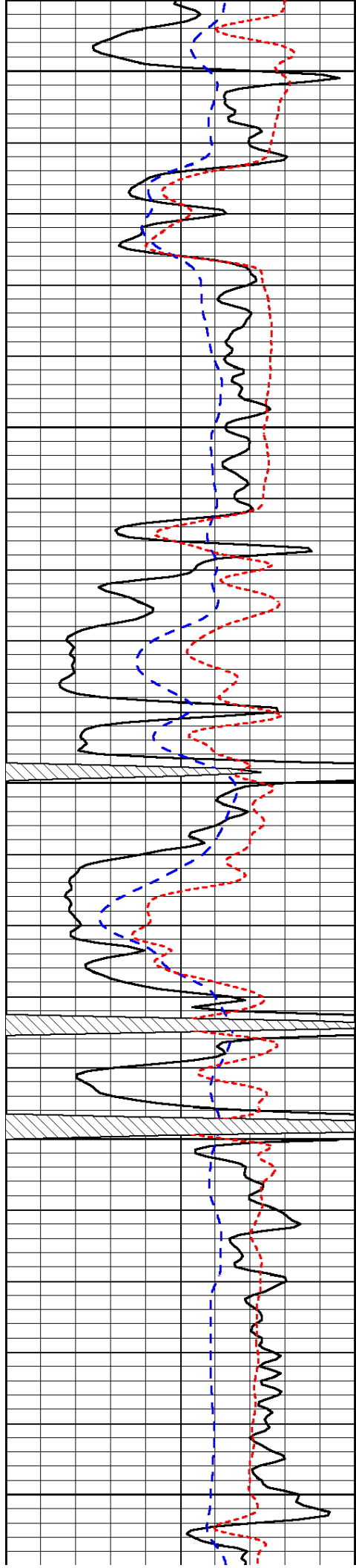


-36

-35

-35

-35



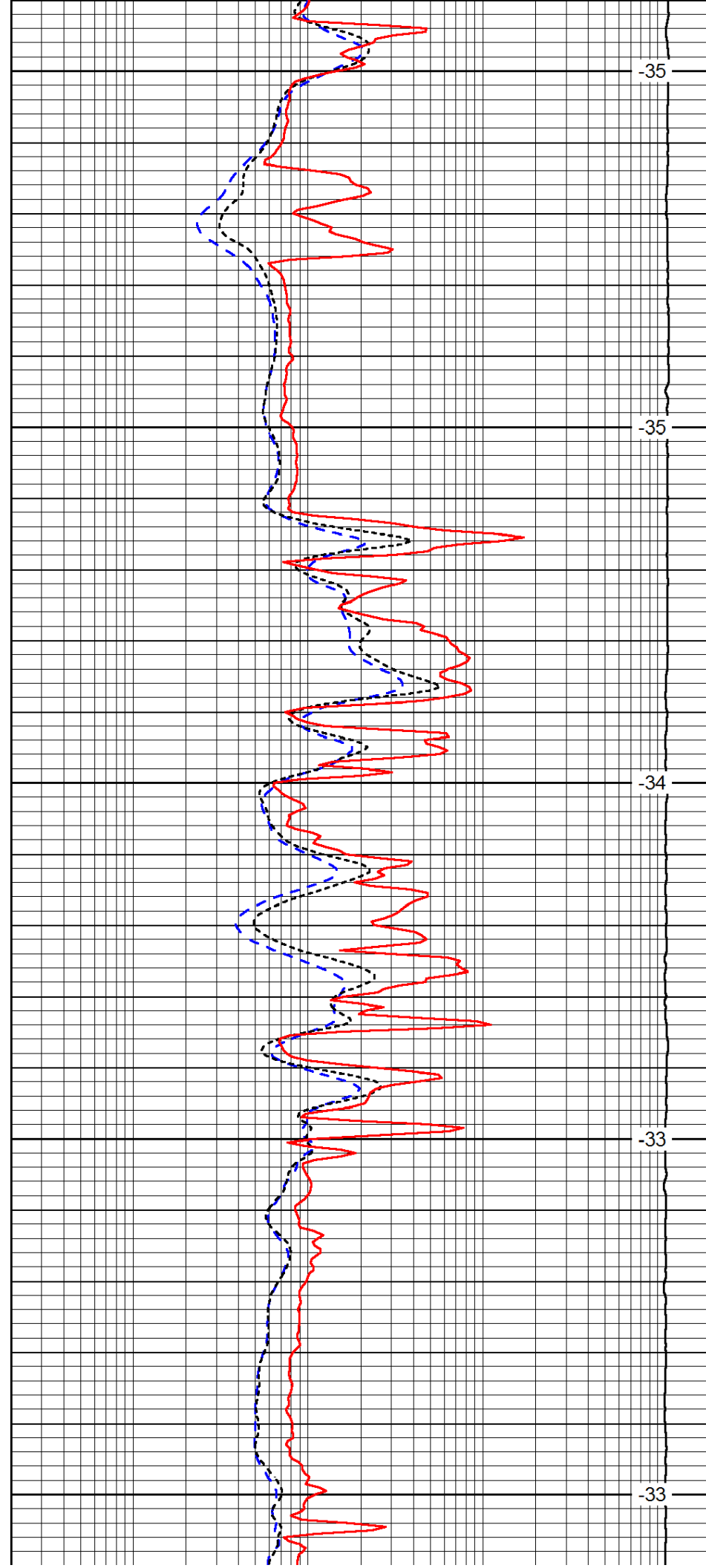
1850

1900

1950

2000

2050



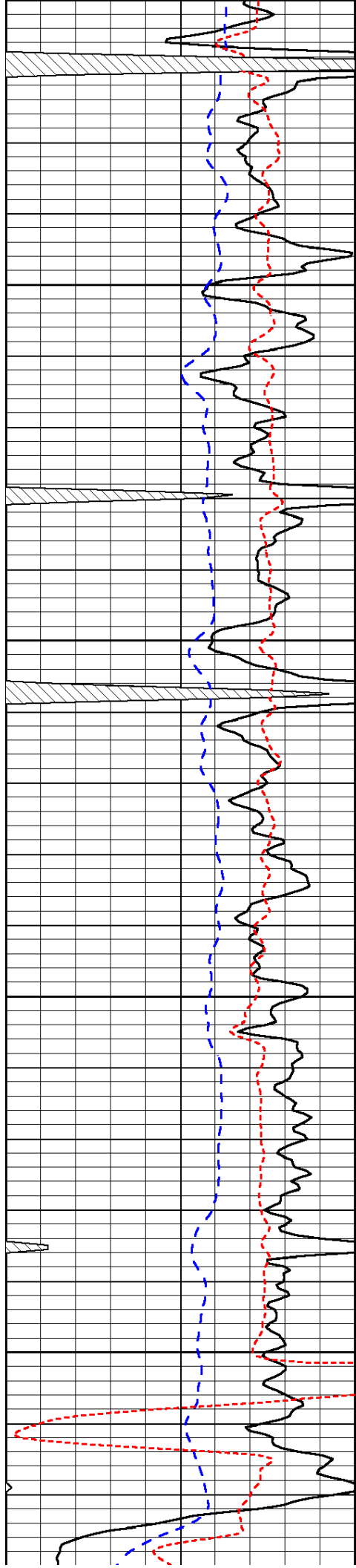
-35

-35

-34

-33

-33

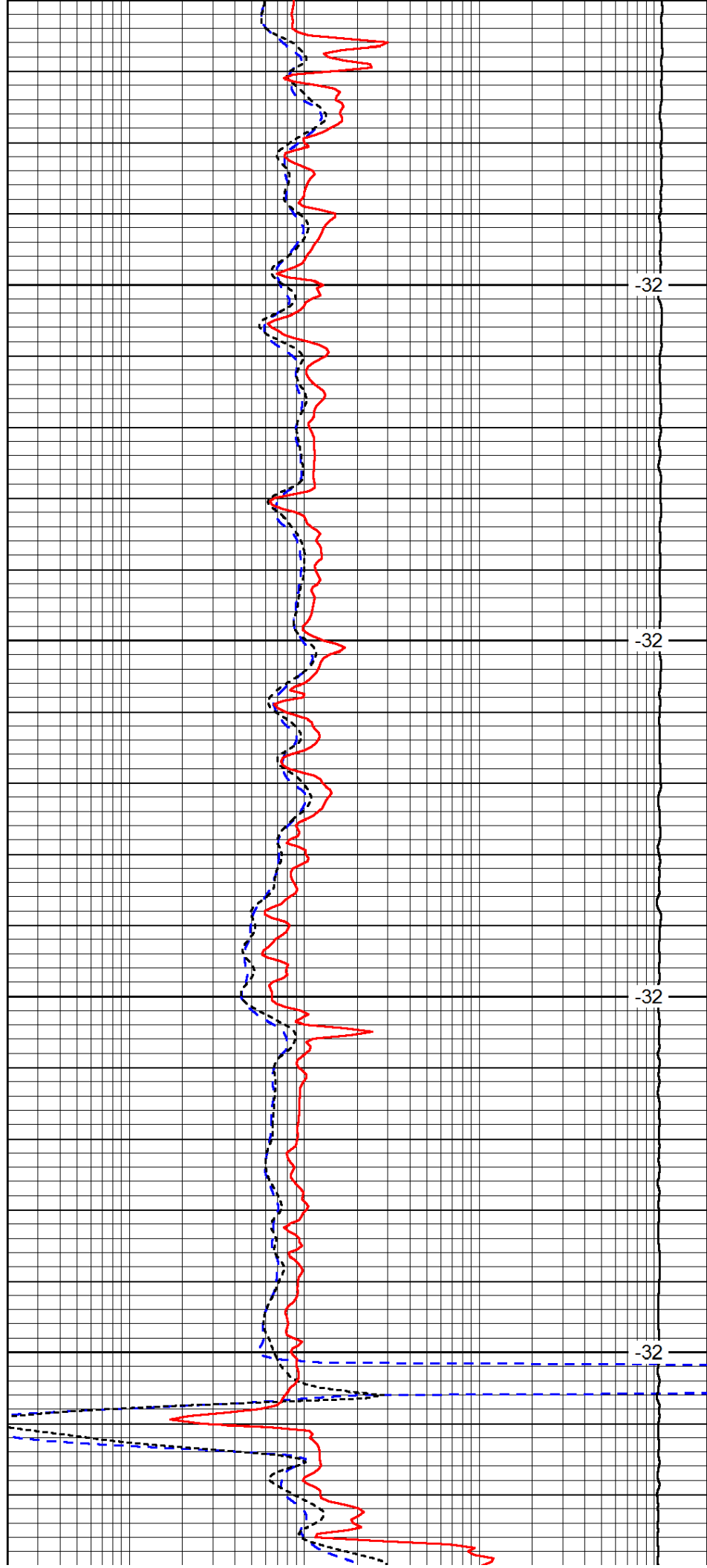


2100

2150

2200

2250

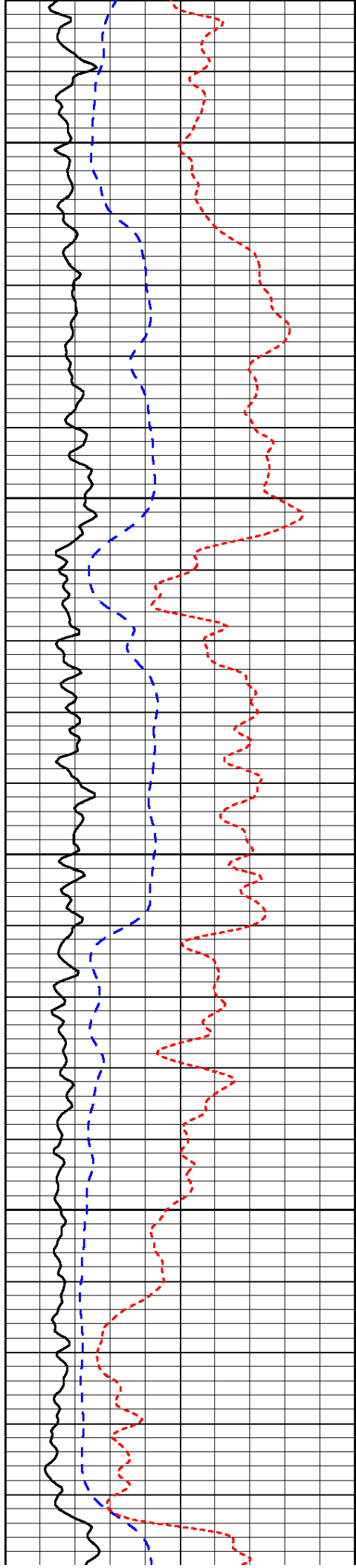


-32

-32

-32

-32



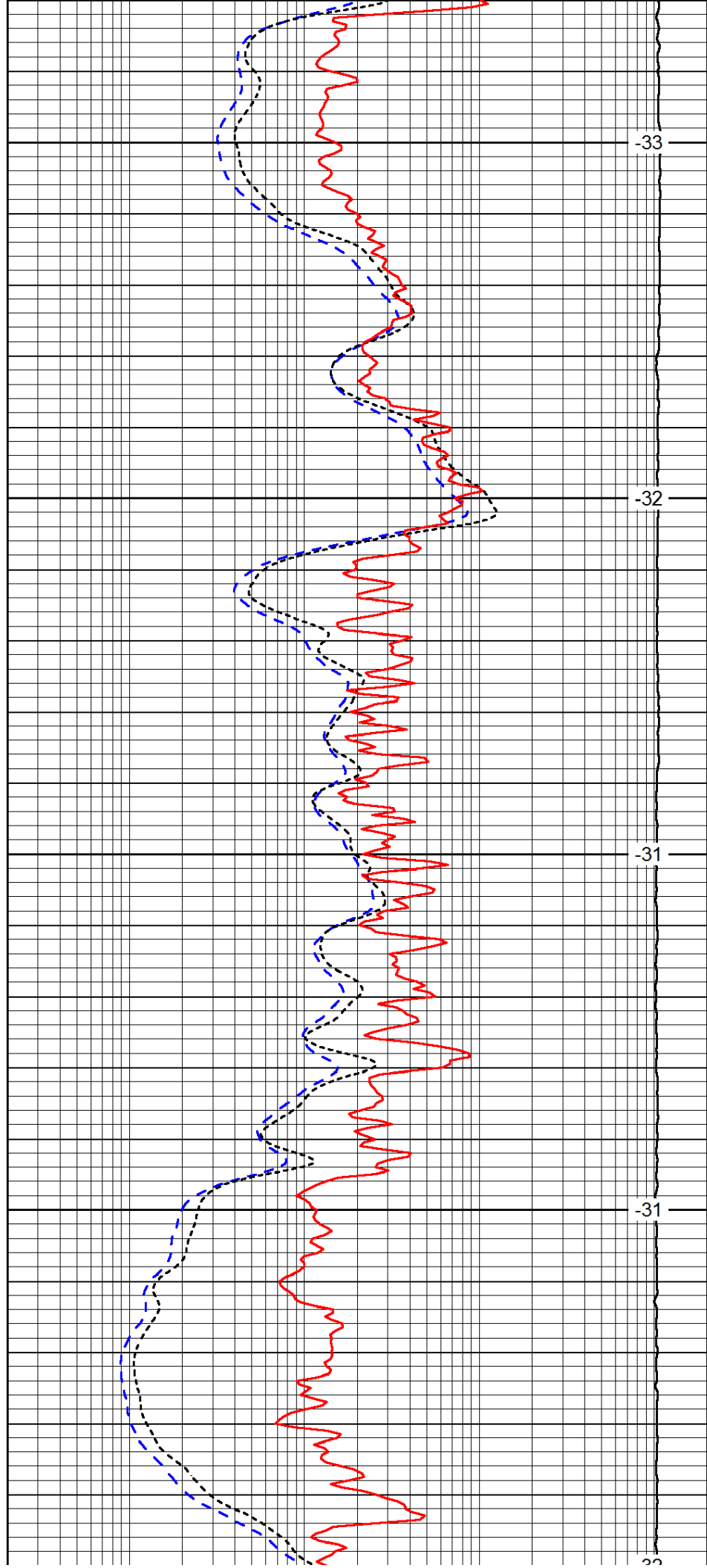
2300

2350

2400

2450

2500



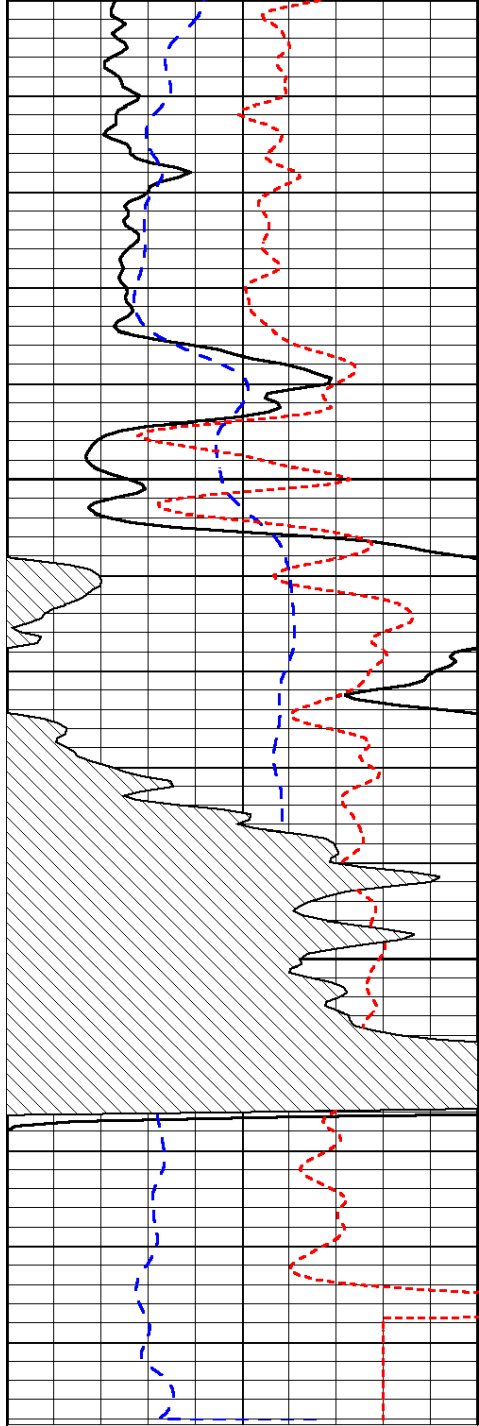
-33

-32

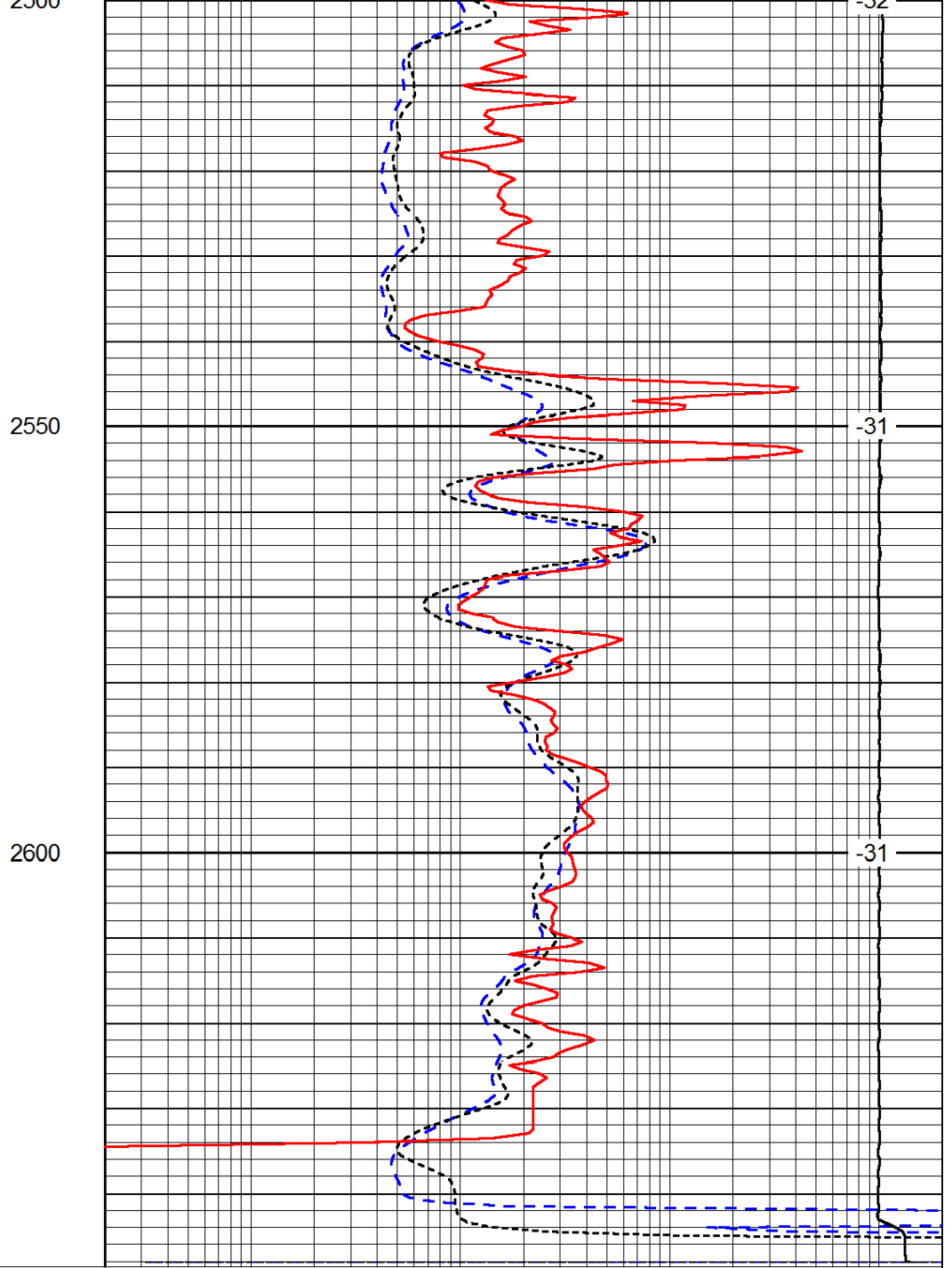
-31

-31

-29



0	Gamma Ray	150
-200	SP (mV)	0
-160	RxoRt	40



0.2	Deep Resistivity	2000
0.2	Medium Resistivity	2000
0.2	Shallow Resistivity	2000
15000	Line Tension	0

LSPD