



Pioneer Energy Services

# Microresistivity Log

15-049-22,600-00-00

API No.

Company **Lone Wolf Oil**  
 Well **Reeves #B-1**  
 Field **Logsdon**  
 County **Elk** State **Kansas**

Location **1980' FNL & 200' FWL**

Sec: **15** Twp: **31S** Rge: **9E**

Other Services  
 CNL/CDL  
 DIL

Elevation

Permanent Datum **Ground Level** Elevation **1180**  
 Log Measured From **Kelly Bushing** **6** Ft. Above Perm. Datum  
 Drilling Measured From **Kelly Bushing**

K.B. 1186  
 D.F. 1186  
 G.L. 1180

Date	9/19/2014	
Run Number	Two	
Depth Driller	2650	
Depth Logger	2643	
Bottom Logged Interval	2642	
Top Log Interval	1400	
Casing Driller	8.625 @ 210	
Casing Logger	216	
Bit Size	7.875	
Type Fluid in Hole	Chemical	
Salinity, ppm CL	1,150	
Density / Viscosity	9.3   48	
pH / Fluid Loss	9.5   9.0	
Source of Sample	Flowline	
Rm @ Meas. Temp	1.25 @ 64	
Rmf @ Meas. Temp	.94 @ 64	
Rmc @ Meas. Temp	1.69 @ 64	
Source of Rmf / Rmc	Charts	
Rm @ BHT	.78 @ 102	
Operating Rig Time	3 Hours	
Max Rec. Temp. F	102	
Equipment Number	10	
Location	Hays	
Recorded By	C. Desai	
Witnessed By	Joe Baker	

<<< Fold Here >>>

All interpretations are opinions based on inferences from electrical or other measurements and we cannot and do not guarantee the accuracy or correctness of any interpretation, and we shall not, except in the case of gross or willful negligence on our part, be liable or responsible for any loss, costs, damages, or expenses incurred or sustained by anyone resulting from any interpretation made by any of our officers, agents or employees. These interpretations are also subject to our general terms and conditions set out in our current Price Schedule.

### Comments

Thank you for using Pioneer Energy Services  
[www.pioneerenergy.com](http://www.pioneerenergy.com)  
 785 625 3858

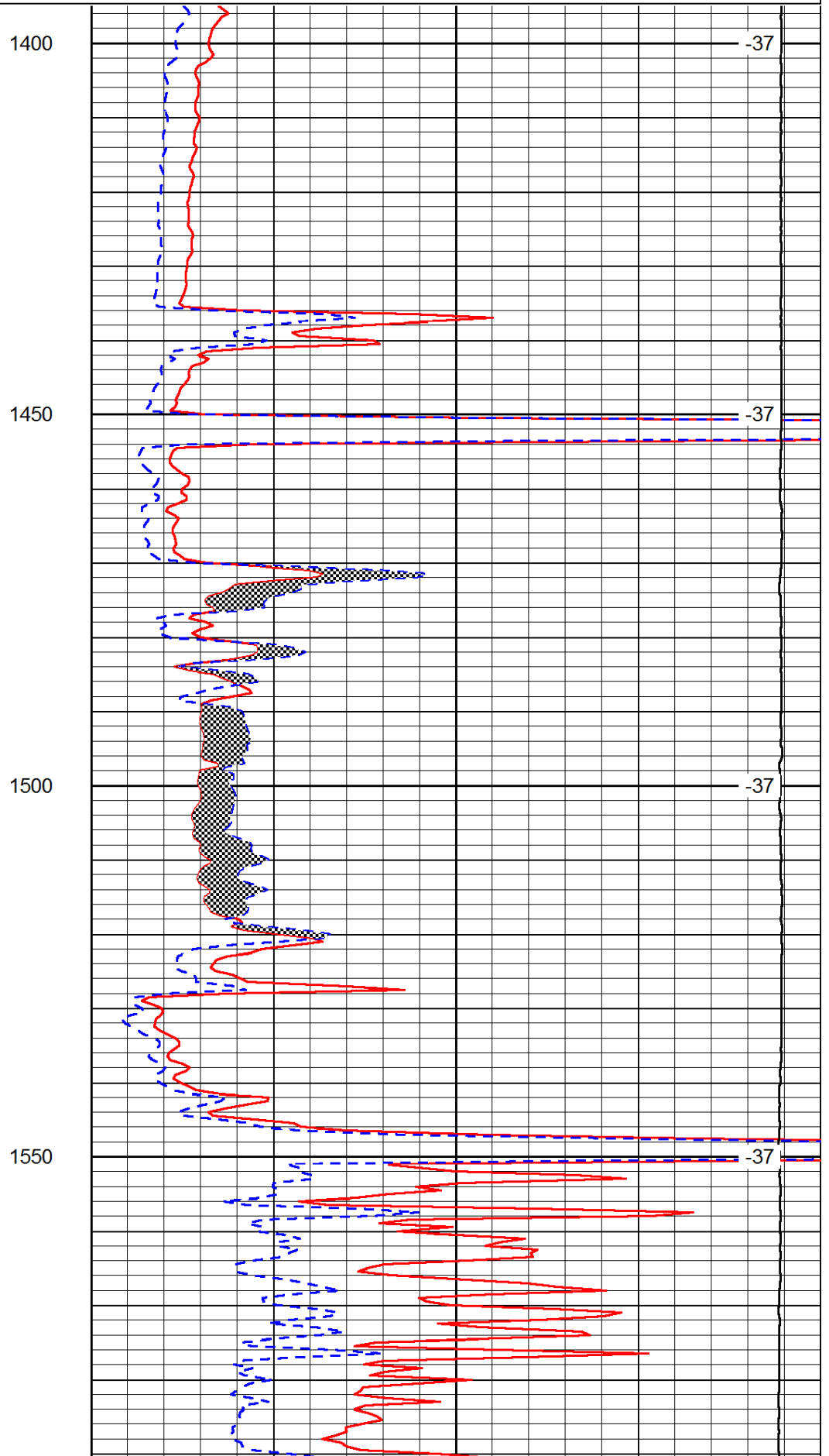
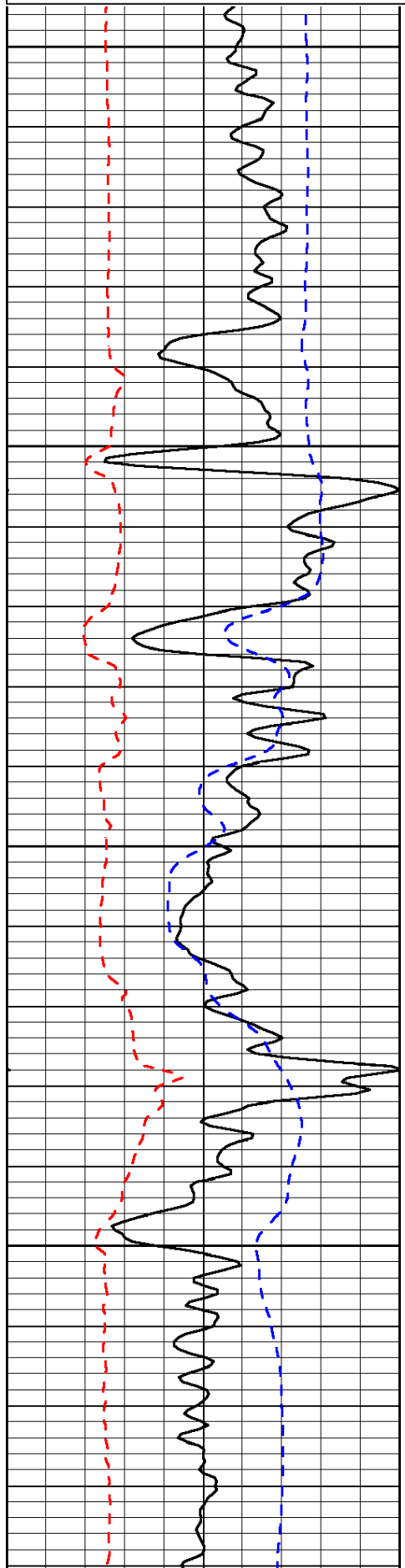
Moline KS, W to 7 Rd,  
 1/2 S, E Into

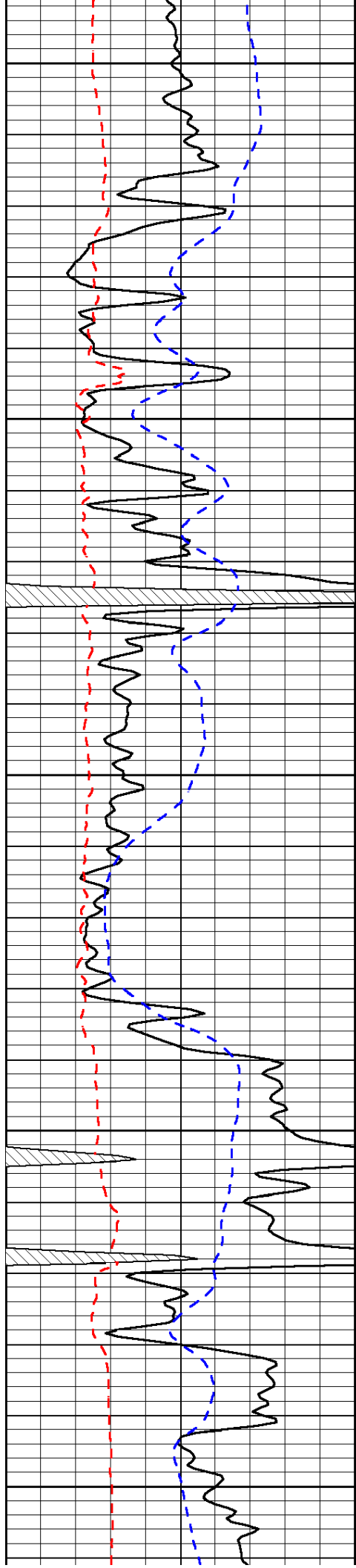
Database File: c:\warrior\data\lone wolf\_reeves # b-1\whd.db  
 Dataset Pathname: dil/lwstk  
 Presentation Format: micro  
 Dataset Creation: Fri Sep 19 10:39:40 2014  
 Charted by: Depth in Feet scaled 1:240

0	Gamma Ray	150
6	Micro Log Caliper (GAPI)	16
-200	SP (mV)	0

0	Micro Inverse 1 X 1	40
0	Micro Normal 2"	40
15000	Line Weight	0

LSPD





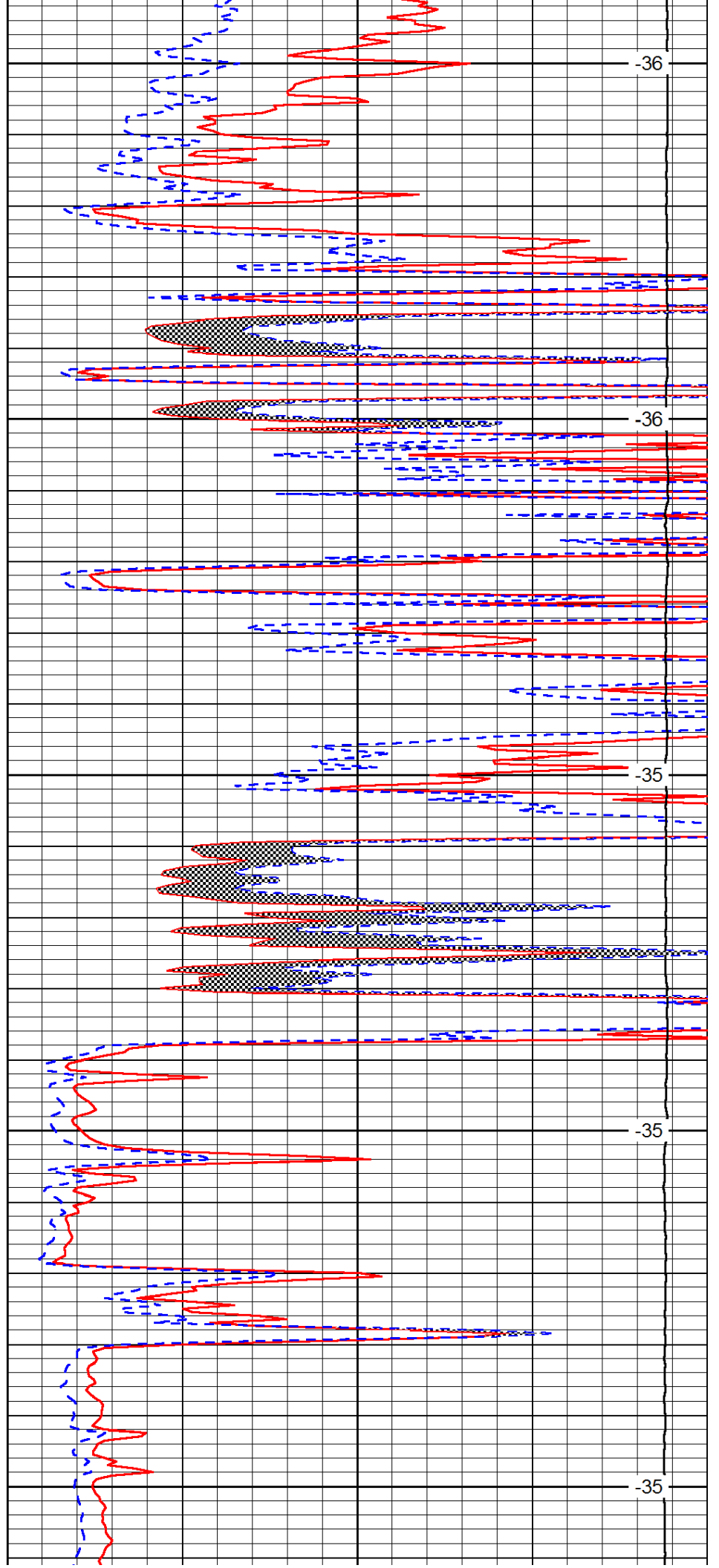
1600

1650

1700

1750

1800



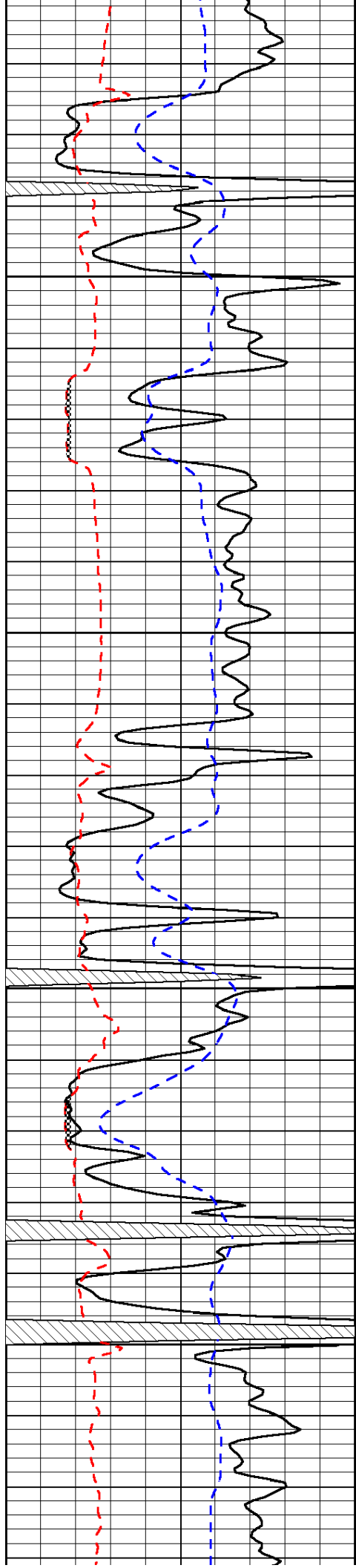
-36

-36

-35

-35

-35

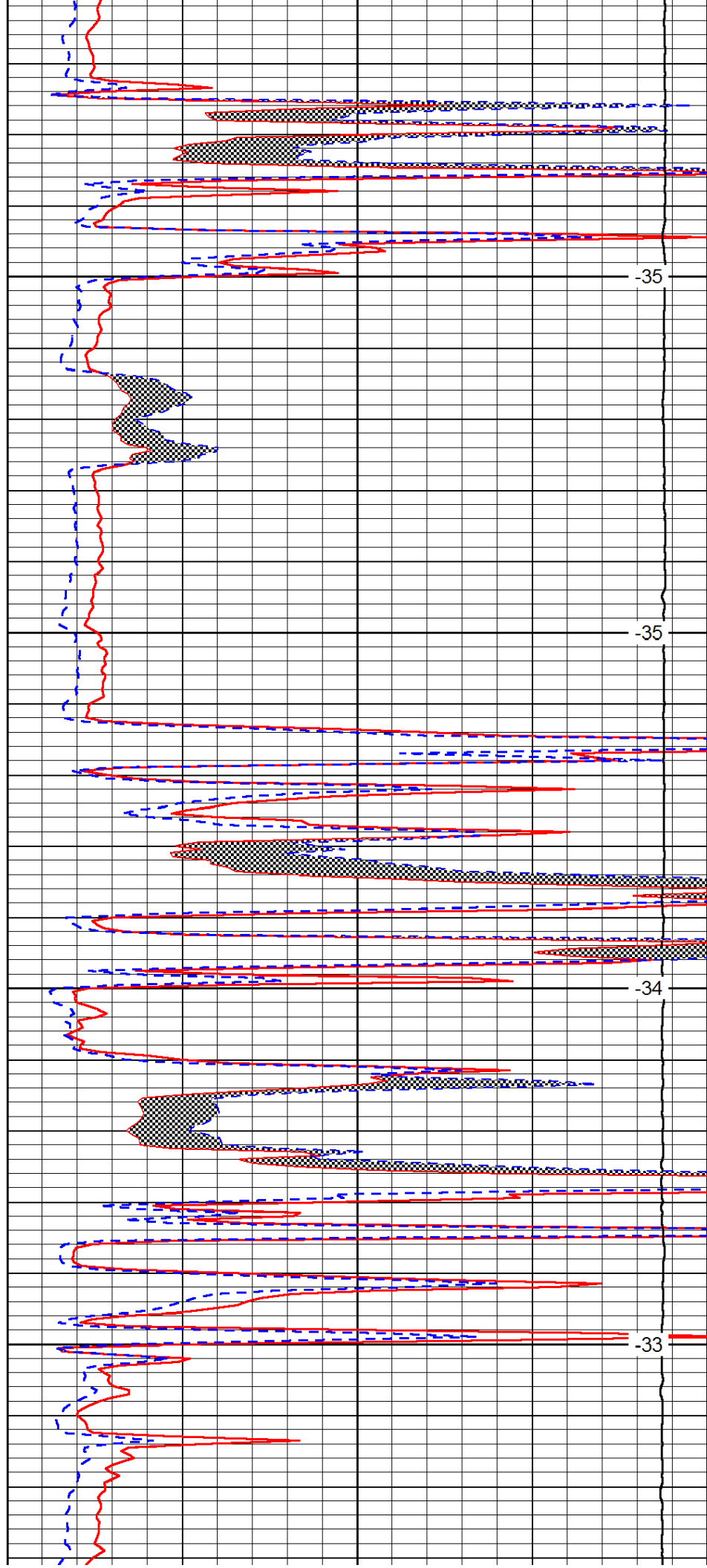


1850

1900

1950

2000

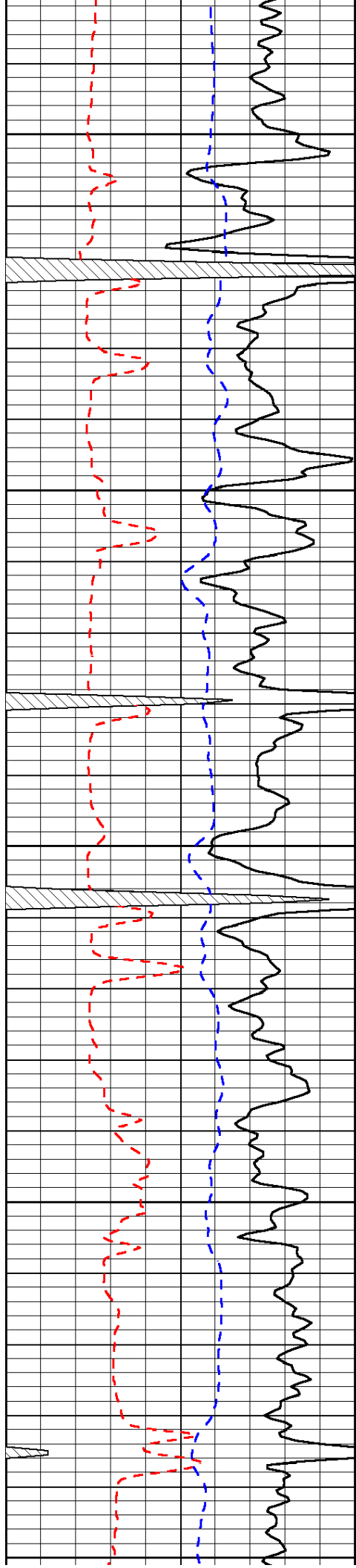


-35

-35

-34

-33



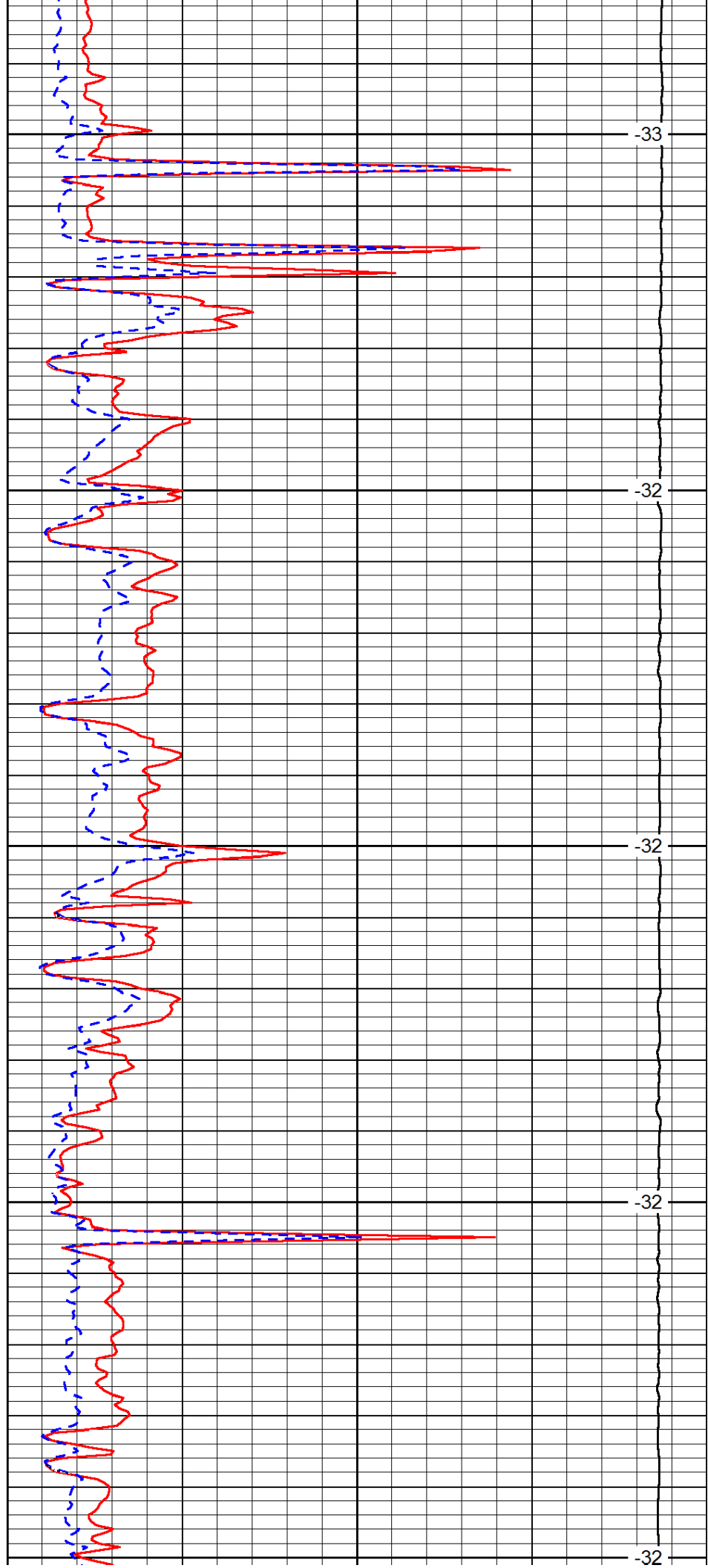
2050

2100

2150

2200

2250



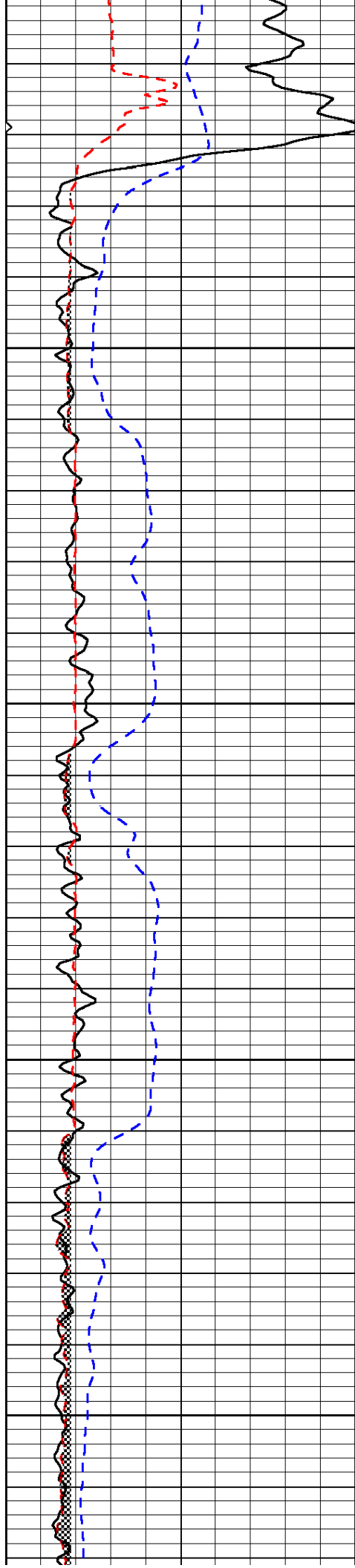
-33

-32

-32

-32

-32

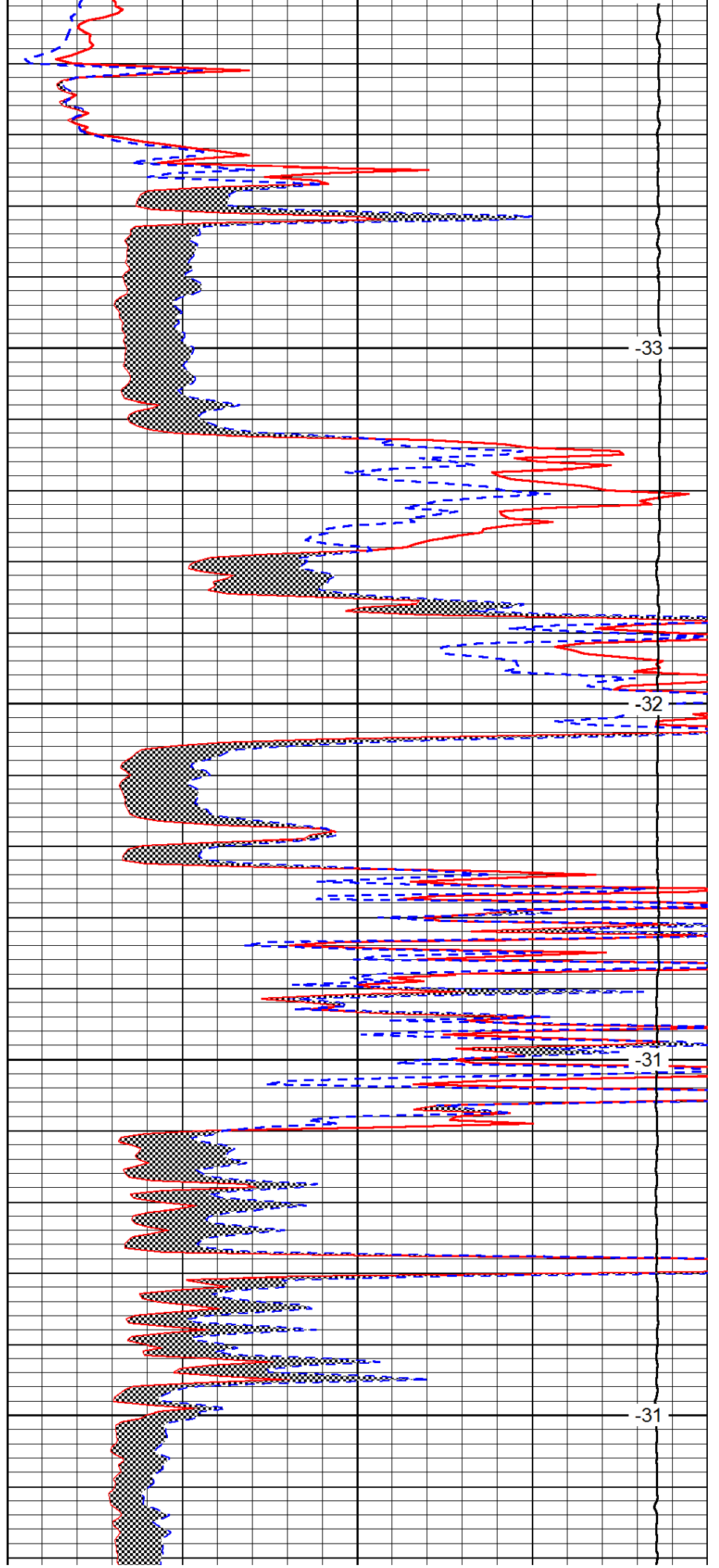


2300

2350

2400

2450

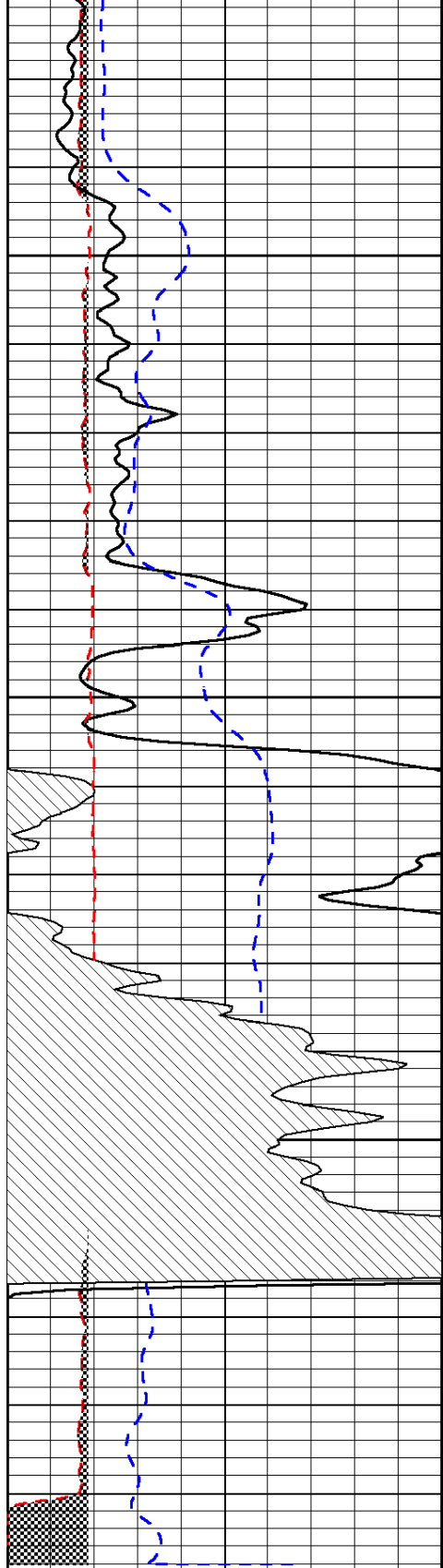


-33

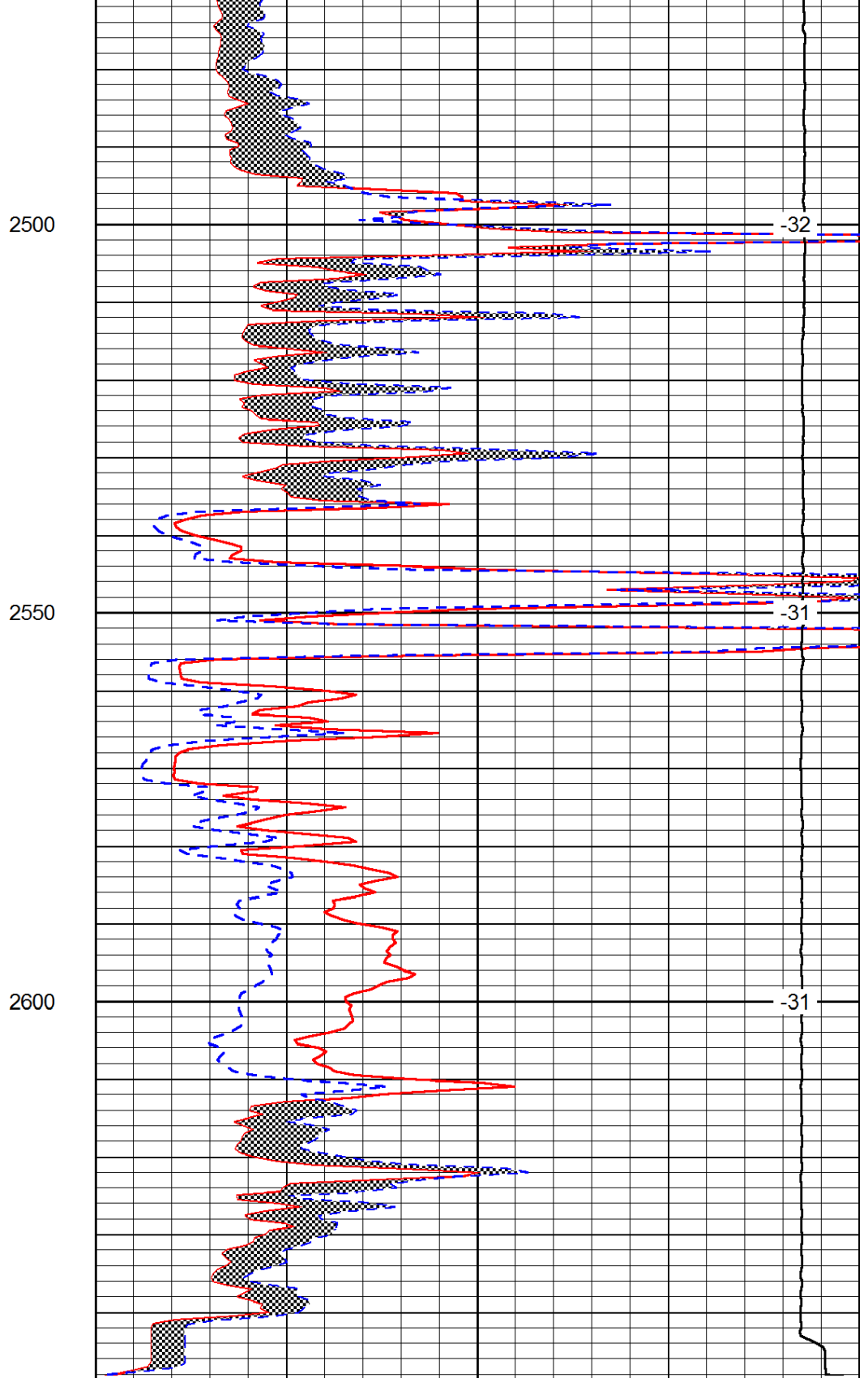
-32

-31

-31



0	Gamma Ray	150
6	Micro Log Caliper (GAPI)	16
-200	SP (mV)	0



0	Micro Inverse 1 X 1	40
0	Micro Normal 2"	40
15000	Line Weight	0

LSPD