



**COMPLETION
& PRODUCTION
SERVICES CO.**

**MICRO
LOG**

Company: DOUBLE "K" OIL, INC.
Well: KOHL #19
Field: KOHL
County: TREGO
State: KANSAS

Company: DOUBLE "K" OIL, INC.
Well: KOHL #19
Field: KOHL
County: TREGO
State: KANSAS

Location: API # : 15-195-22959-0000
2339' FSL & 1980' FWL
S/2 - N/2 - NE - SW/4
SEC 11 TWP 12S RGE 21W
Permanent Datum: GROUND LEVEL Elevation: 2331
Log Measured From: KELLY BUSHING 8' A.G.L.
Drilling Measured From: KELLY BUSHING
Other Services: CDL/CNL DIL
Elevation: K.B. 2339, D.F. 2337, G.L. 2331

| | |
|------------------------------|---------------|
| Date | 9/1/14 |
| Run Number | TWO |
| Depth Driller | 4100 |
| Depth Logger | 4102 |
| Bottom Logged Interval | 4100 |
| Top Log Interval | 3300 |
| Casing Driller | 8 5/8"@220' |
| Casing Logger | 221 |
| Bit Size | 7 7/8" |
| Type Fluid in Hole | CHEMICAL MUD |
| Density / Viscosity | 9.5/60 |
| pH / Fluid Loss | 7.5/9.6 |
| Source of Sample | FLOWLINE |
| Rim @ Meas. Temp | 1.00@90F |
| Rmf @ Meas. Temp | .750@90F |
| Rmc @ Meas. Temp | 1.20@90F |
| Source of Rmf / Rmc | MEASUREMENT |
| Rim @ BHT | .769@117F |
| Time Circulation Stopped | 4 HOURS |
| Time Logger on Bottom | 12:45 P.M. |
| Maximum Recorded Temperature | 117F |
| Equipment Number | 4854 |
| Location | HAYS, KANSAS |
| Recorded By | JEFF LUEBBERS |
| Witnessed By | ROGER FISHER |

<<< Fold Here >>>

All interpretations are opinions based on inferences from electrical or other measurements and we cannot and do not guarantee the accuracy or correctness of any interpretation, and we shall not, except in the case of gross or willful negligence on our part, be liable or responsible for any loss, costs, damages, or expenses incurred or sustained by anyone resulting from any interpretation made by any of our officers, agents or employees. These interpretations are also subject to our general terms and conditions set out in our current Price Schedule.

Comments

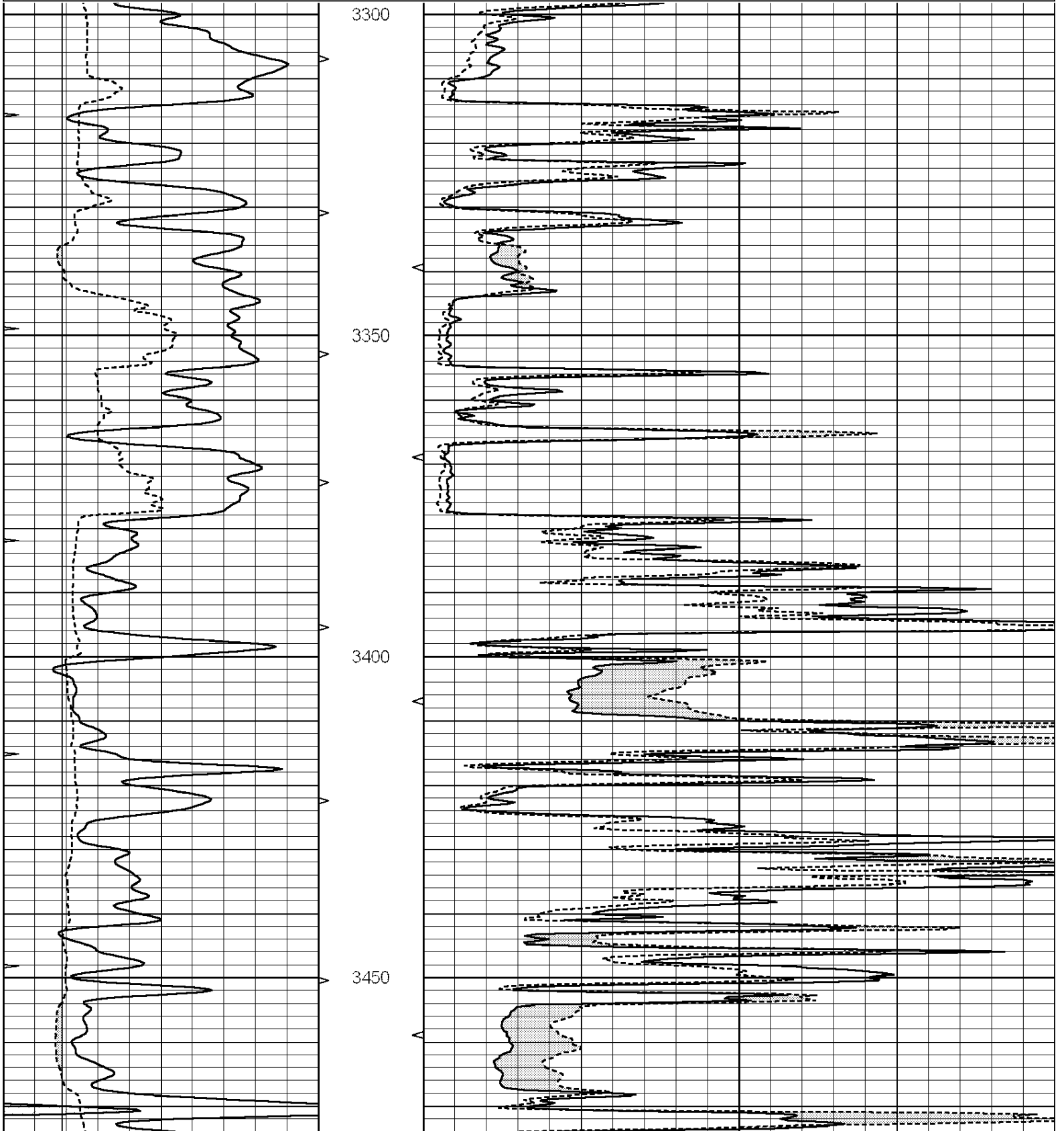
THANK YOU FOR USING "NABORS" HAYS, KANSAS (785) 628-6395
DIRECTIONS
RIGA & I-70, 4 1/2N., 1 1/2E., 1/2S. INTO

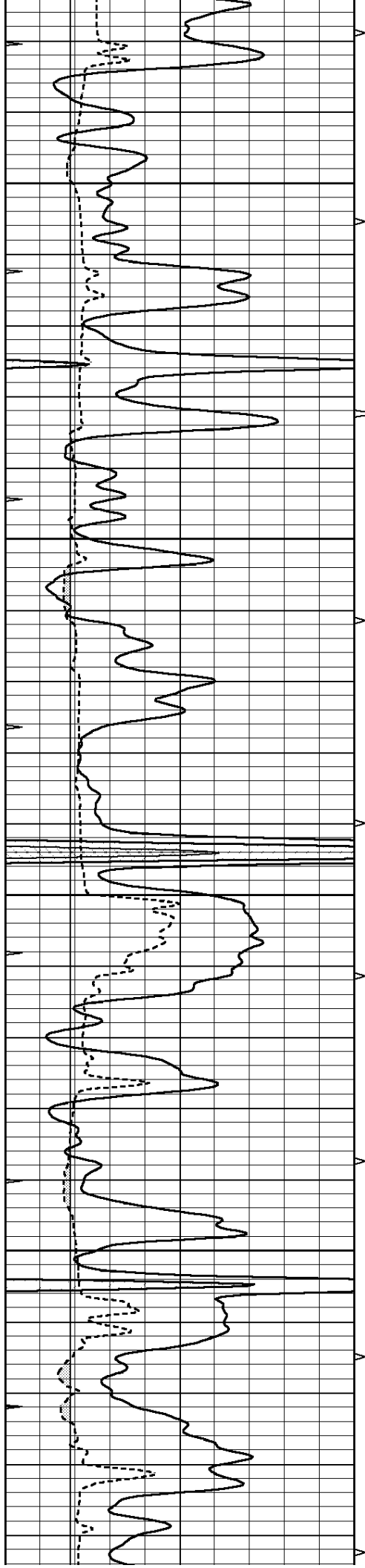


MAIN SECTION

Database File: 24574ddn.db
 Dataset Pathname: pass6.2
 Presentation Format: micro
 Dataset Creation: Mon Sep 01 15:28:32 2014 by Calc SOC 120430
 Charted by: Depth in Feet scaled 1:240

| | | | | | | |
|---|------------------|-----|----------|-----|----------------|----|
| 0 | GAMMA RAY (GAPI) | 150 | ABHV | 0 | MEL1.5 (Ohm-m) | 40 |
| 6 | CALIPER (in) | 16 | 10 (ft3) | 0 0 | MEL 20 (Ohm-m) | 40 |
| 0 | MINMK | 20 | TBHV | | | |
| | | | 0 (ft3) | 10 | | |



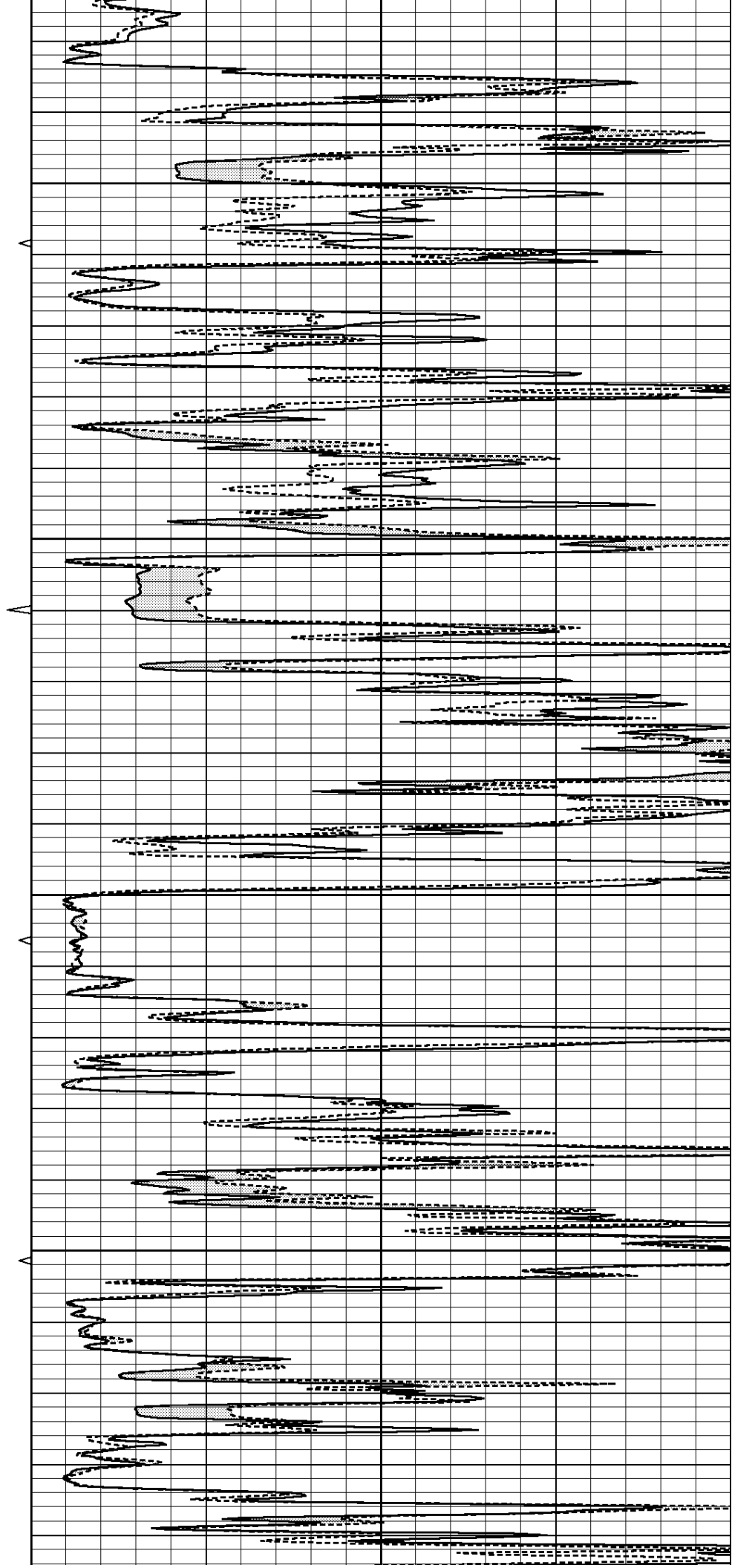


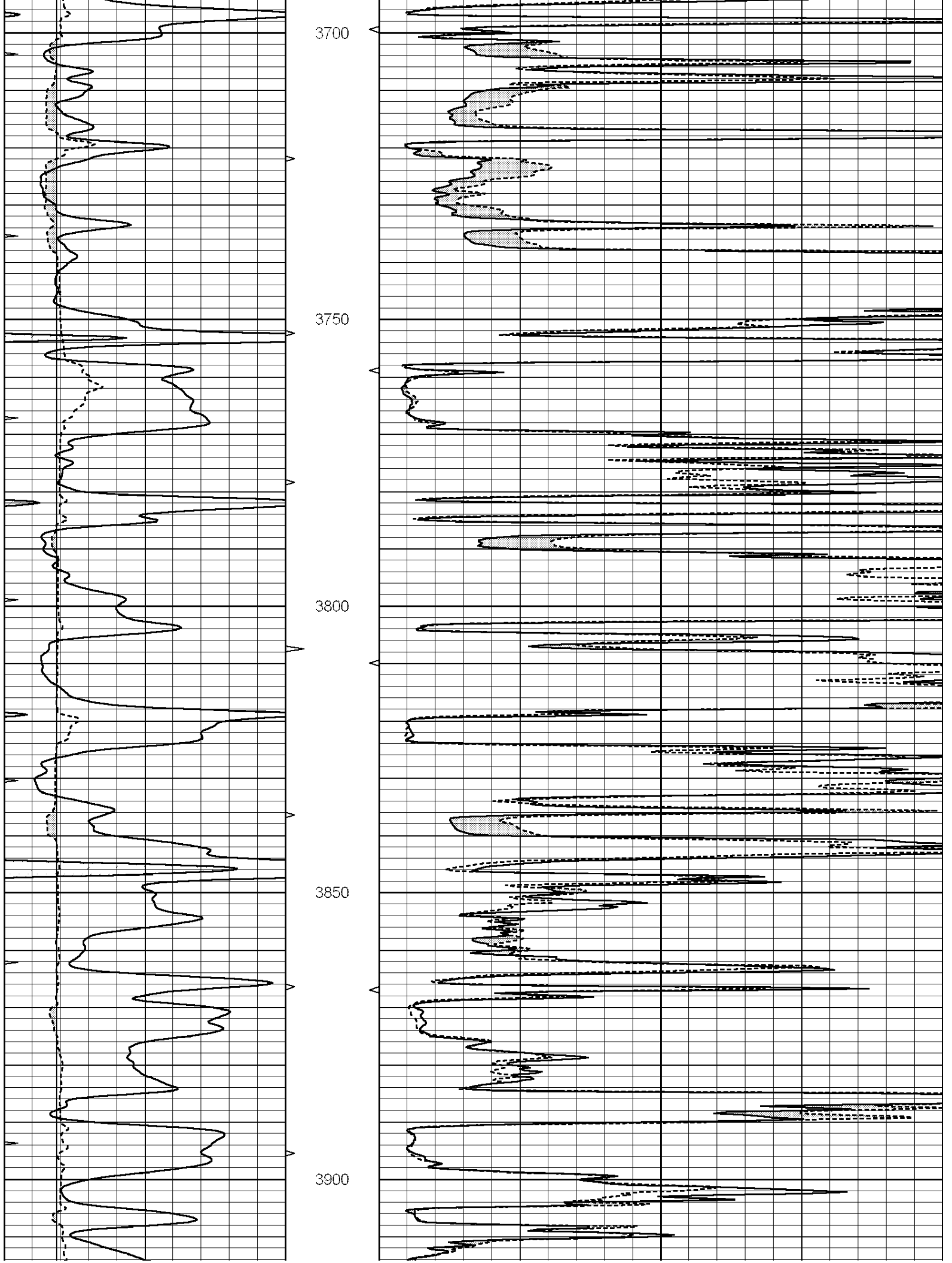
3500

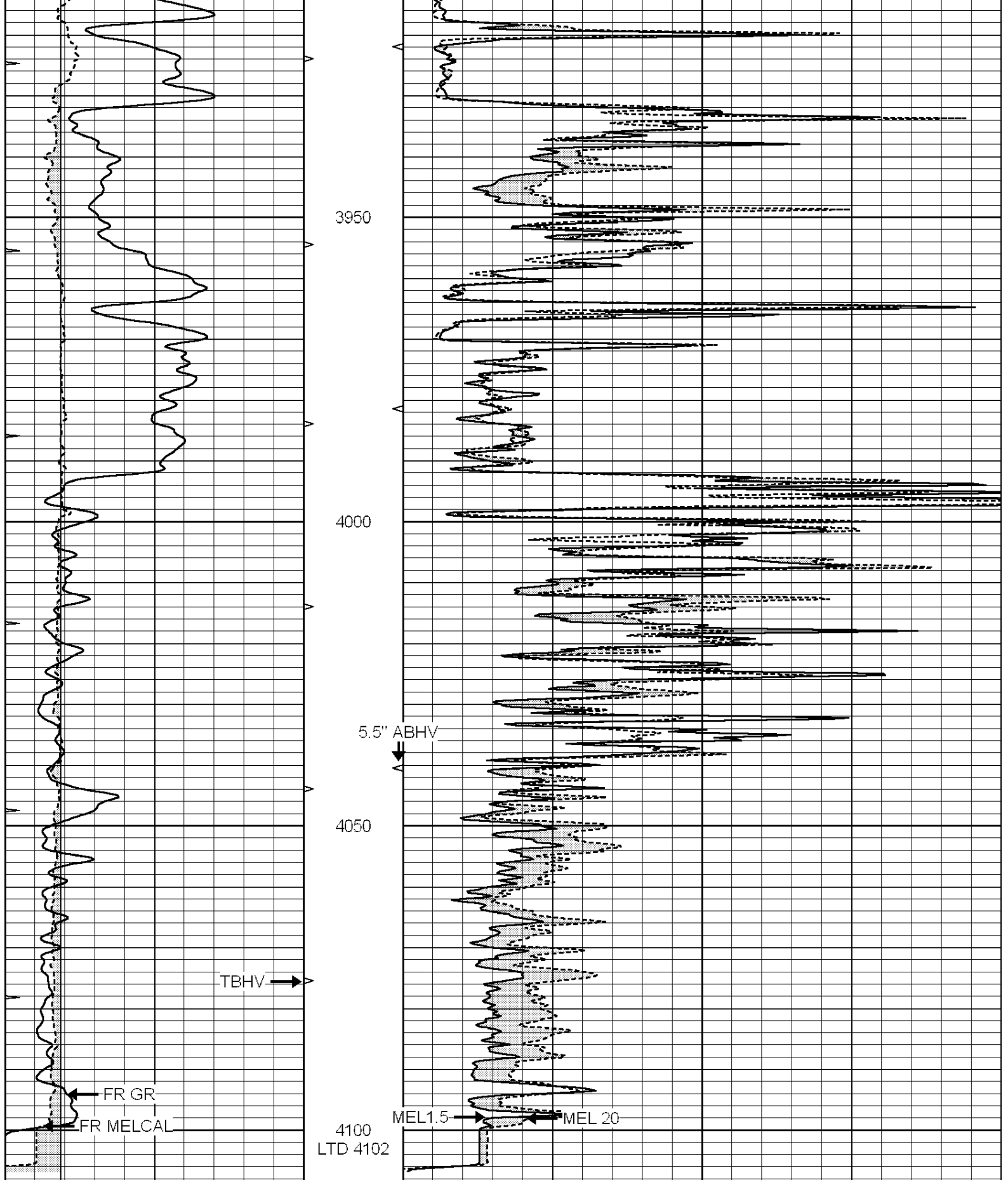
3550

3600

3650





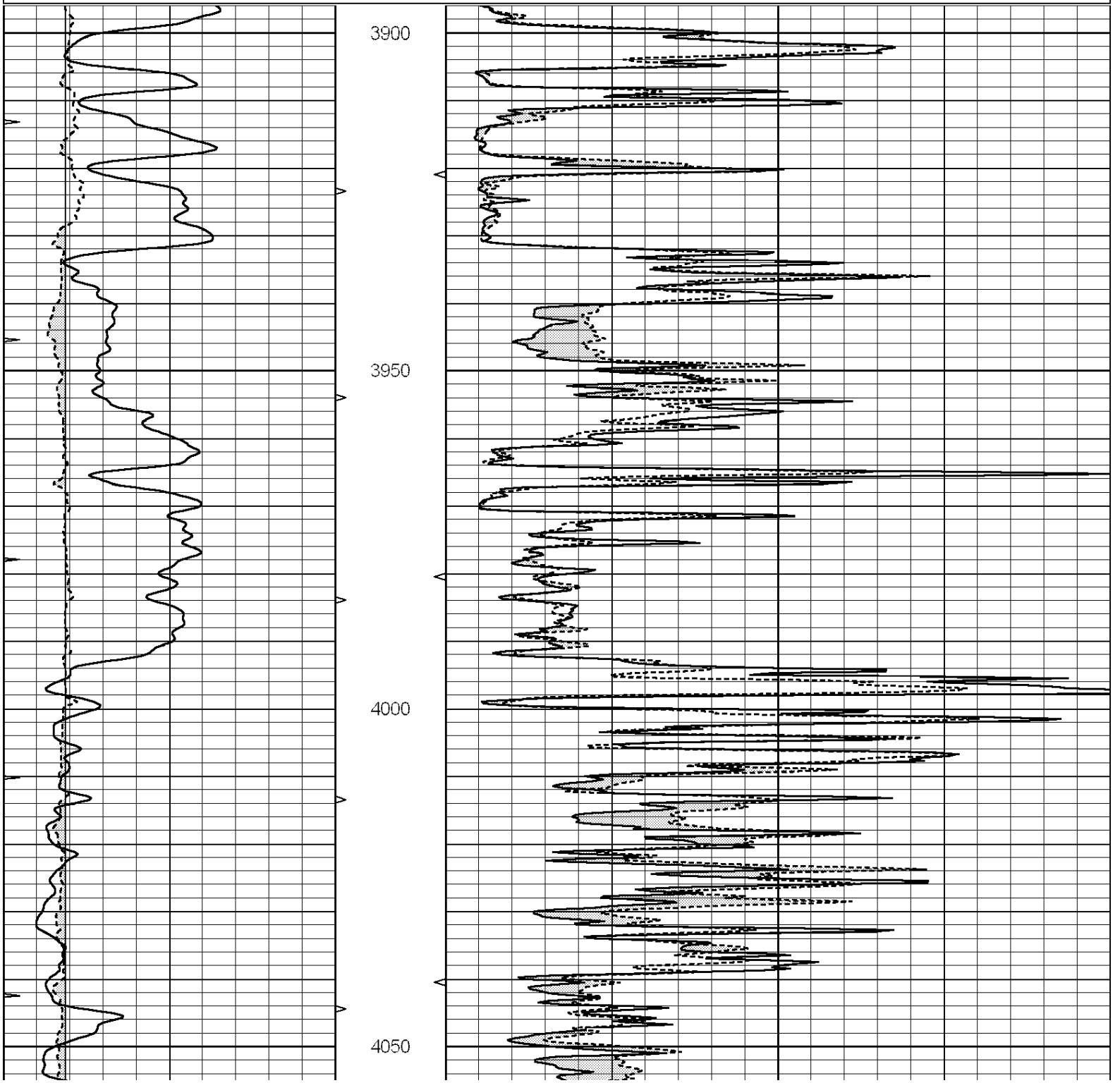


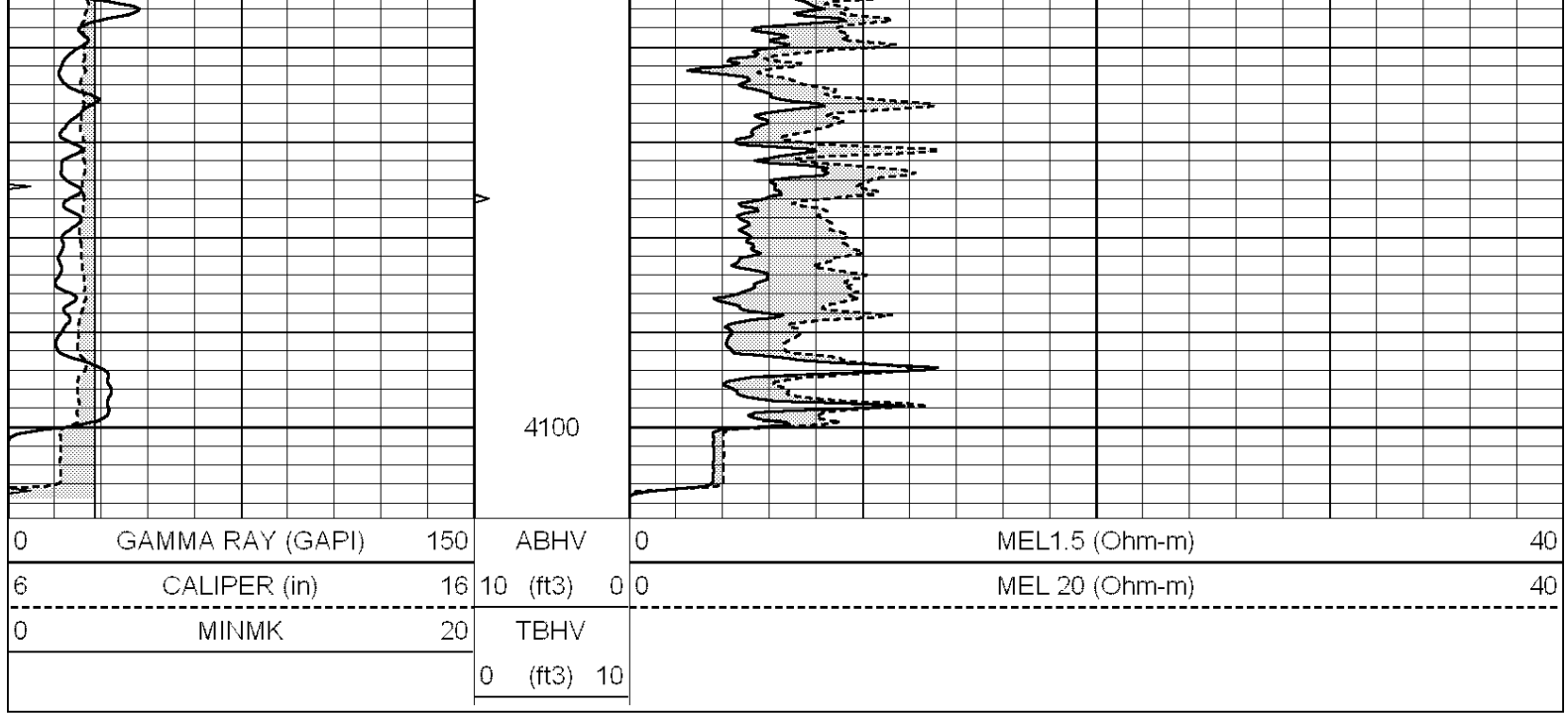
| | | | | | | |
|---|------------------|-----|----------|----|----------------|----|
| 0 | GAMMA RAY (GAPI) | 150 | ABHV | 0 | MEL1.5 (Ohm-m) | 40 |
| 6 | CALIPER (in) | 16 | 10 (ft3) | 0 | MEL 20 (Ohm-m) | 40 |
| 0 | MINMK | 20 | TBHV | | | |
| | | | 0 (ft3) | 10 | | |

REPEAT SECTION

Database File: 24574ddn.db
 Dataset Pathname: pass5.3
 Presentation Format: micro
 Dataset Creation: Mon Sep 01 15:03:21 2014 by Calc SOC 120430
 Charted by: Depth in Feet scaled 1:240

| | | | | | | |
|---|------------------|-----|----------|-----|----------------|----|
| 0 | GAMMA RAY (GAPI) | 150 | ABHV | 0 | MEL1.5 (Ohm-m) | 40 |
| 6 | CALIPER (in) | 16 | 10 (ft3) | 0 0 | MEL 20 (Ohm-m) | 40 |
| 0 | MINMK | 20 | TBHV | | | |
| | | | 0 (ft3) | 10 | | |





Calibration Report

Database File: 24574ddn.db
 Dataset Pathname: pass6.2
 Dataset Creation: Mon Sep 01 15:28:32 2014 by Calc SOC 120430

MICRO Calibration Report

Serial Number: 070910
 Tool Model: ProbeN
 Performed: Wed Aug 06 02:06:59 2014

Caliper Calibration: Gain=4.092 Offset=1.651
 References Low Cal High Cal
 Readings 8.000 15.000
 1.552 3.263

1.5" Calibration: Gain=25.000 Offset=0.300
 References Low Cal High Cal
 Readings 0.000 20.000
 0.000 1.216

2" Calibration: Gain=55.000 Offset=-1.000
 References Low Cal High Cal
 Readings 0.000 20.000
 0.002 1.053

Gamma Ray Calibration Report

Serial Number: 070559
 Tool Model: OPEN_GR
 Performed: Tue Aug 26 00:17:33 2014

Calibrator Value: 1.0 GAPI
 Background Reading: 0.0 cps
 Calibrator Reading: 1.0 cps
 Sensitivity: 0.2200 GAPI/cps