



Pioneer Energy Services

Microresistivity Log

15-147-20735-00-00

API No.

Company **Gore Oil Company**

Well **Demuth #9**

Field **Ray**

County **Phillips**

State

Kansas

Location

2300' FSL & 1750' FWL

Other Services
CNL/CDL
DIL

Sec: **22**

Twp: **5S**

Rge: **20W**

Elevation

K.B. 2196
D.F. 2188
G.L. 2188

Permanent Datum Ground Level

Elevation 2188

Log Measured From Kelly Bushing

8 Ft. Above Perm. Datum

Drilling Measured From Kelly Bushing

Date **05/30/2014**

Run Number

One

Depth Driller

3660

Depth Logger

3661

Bottom Logged Interval

3660

Top Log Interval

2800

Casing Driller

8.625 @ 262

Casing Logger

263

Bit Size

7.875

Type Fluid in Hole

Chemical

Salinity, ppm CL

1300

Density / Viscosity

9.1 54

pH / Fluid Loss

10.0 7.6

Source of Sample

Flowline

Rm @ Meas. Temp

0.90 @ 79

Rmf @ Meas. Temp

0.68 @ 79

Rmc @ Meas. Temp

1.21 @ 79

Source of Rmf / Rmc

Charts

Rm @ BHT

0.62 @ 115

Operating Rig Time

3 Hours

Max Rec. Temp. F

115

Equipment Number

91

Location

Hays

Recorded By

D. Schmitt

Witnessed By

Chuck Schmalz

<<< Fold Here >>>

All interpretations are opinions based on inferences from electrical or other measurements and we cannot and do not guarantee the accuracy or correctness of any interpretation, and we shall not, except in the case of gross or willful negligence on our part, be liable or responsible for any loss, costs, damages, or expenses incurred or sustained by anyone resulting from any interpretation made by any of our officers, agents or employees. These interpretations are also subject to our general terms and conditions set out in our current Price Schedule.

Comments

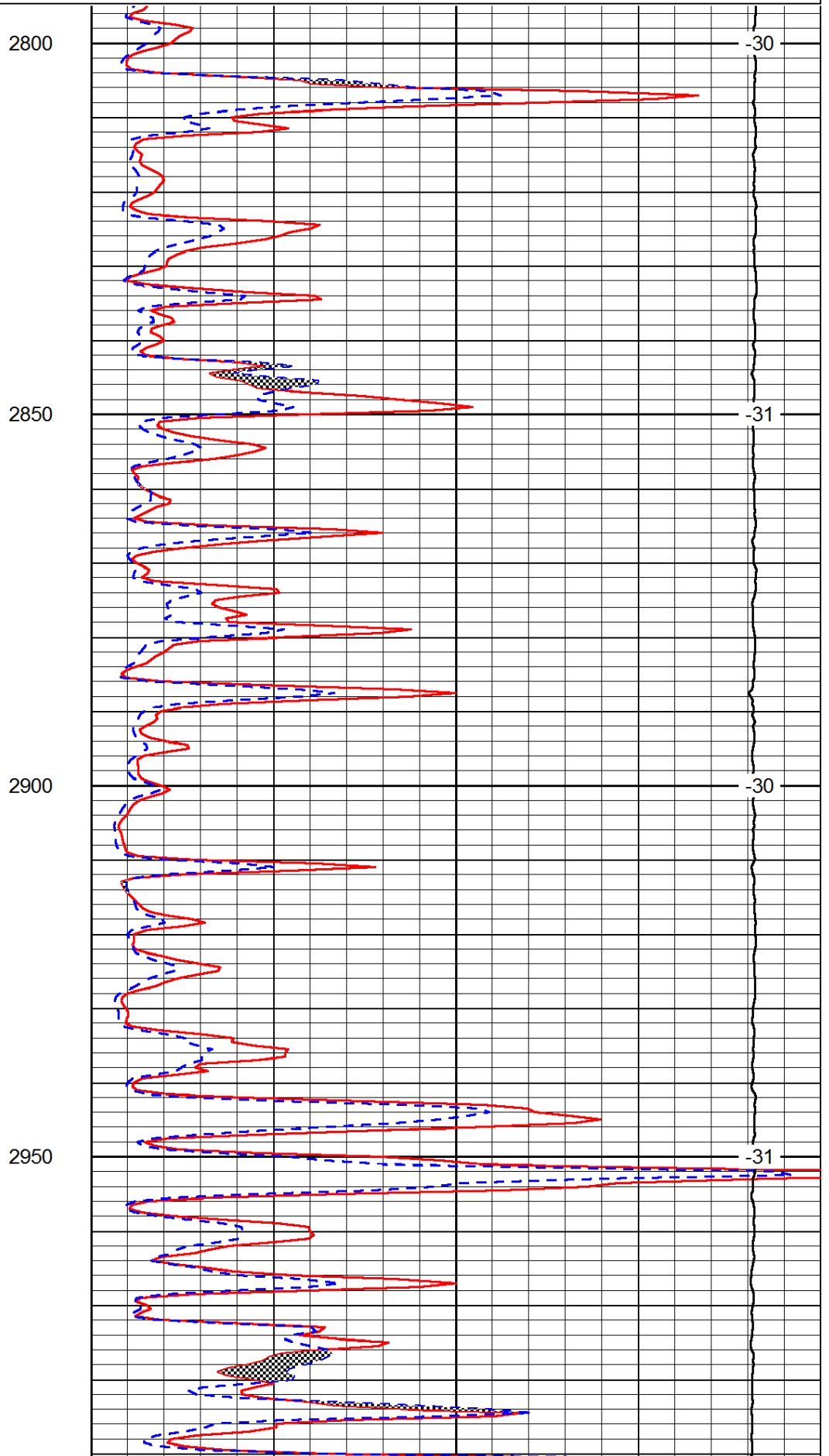
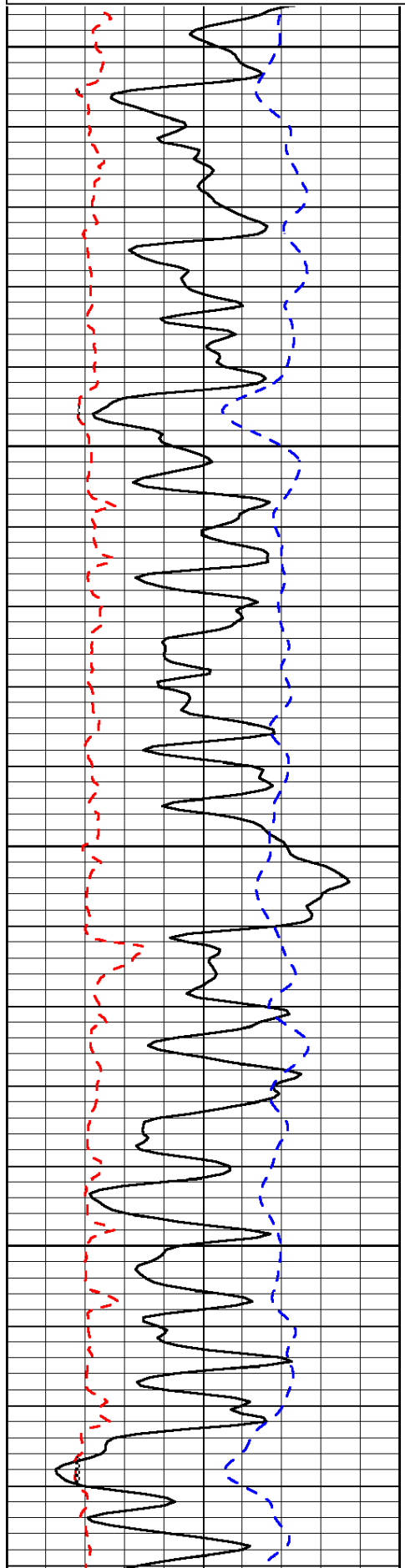
Thank you for using Pioneer Energy Services
www.pioneerenergy.com
 785 625 3858
 Logan,
 South to Big Bear Rd,
 1/2 South, 1/4 East,
 North and East Into

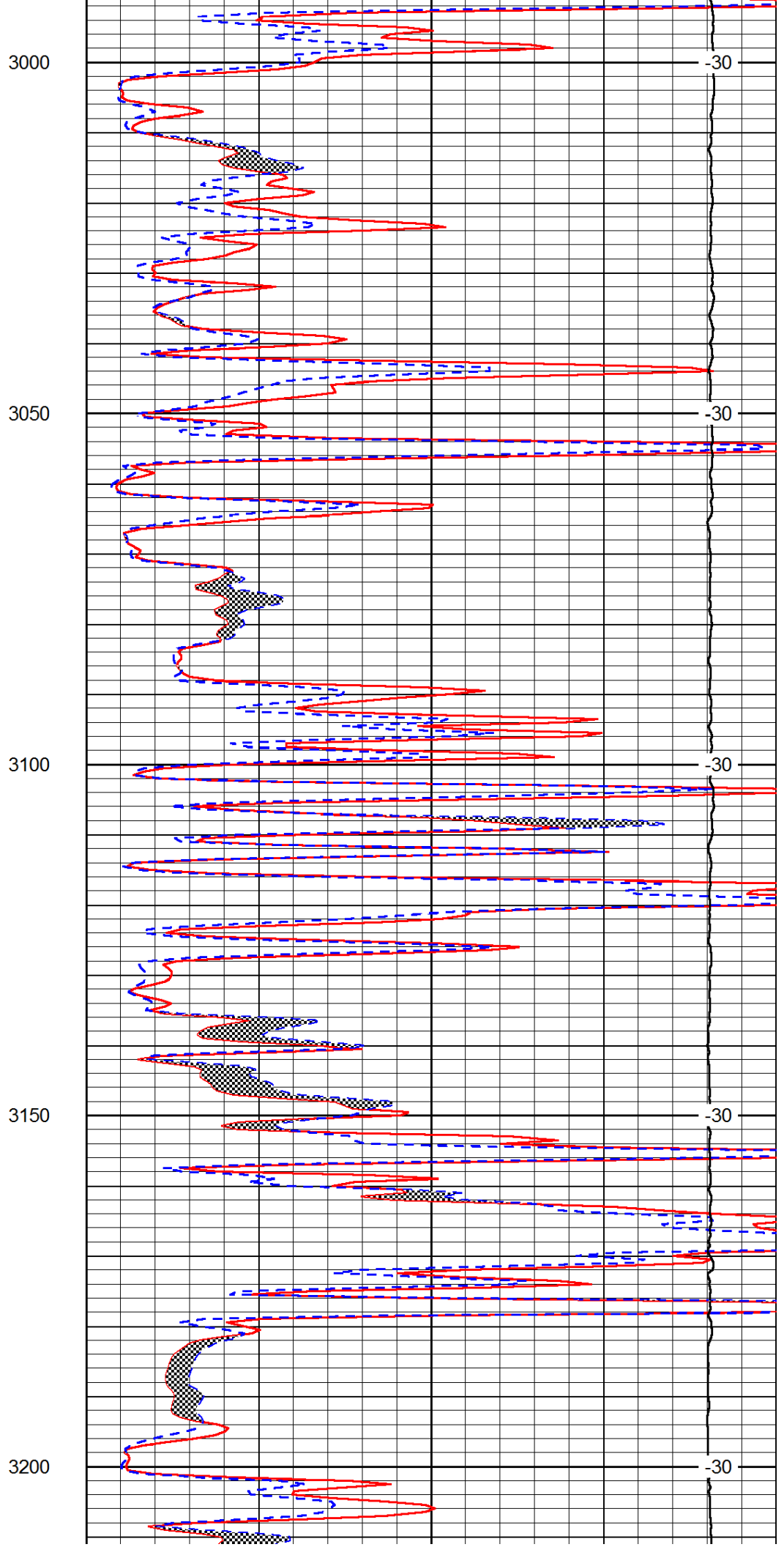
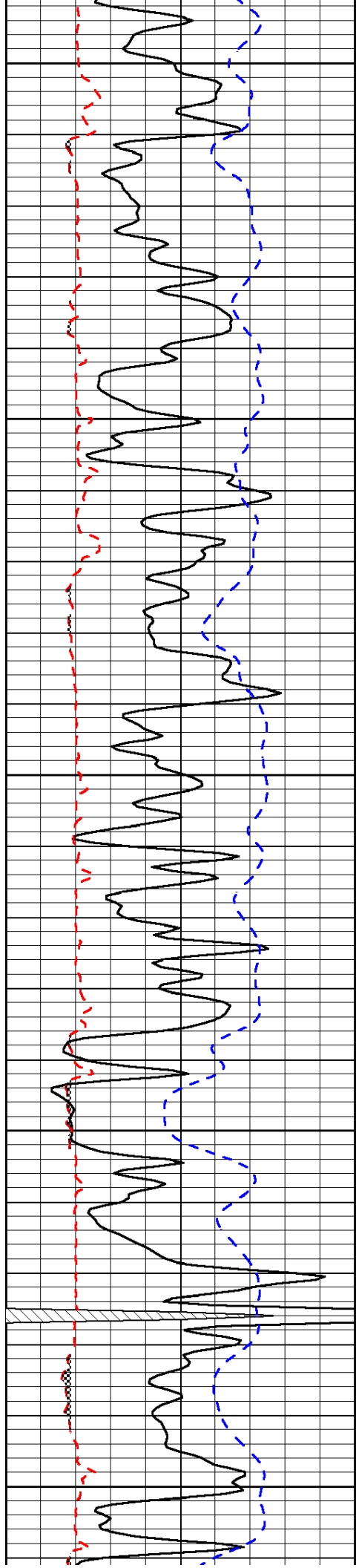
Database File: c:\warrior\data\gore_demuth #9\gore_demuth_9hd.db
 Dataset Pathname: dil/gostkml
 Presentation Format: micro
 Dataset Creation: Sat May 31 01:15:47 2014
 Charted by: Depth in Feet scaled 1:240

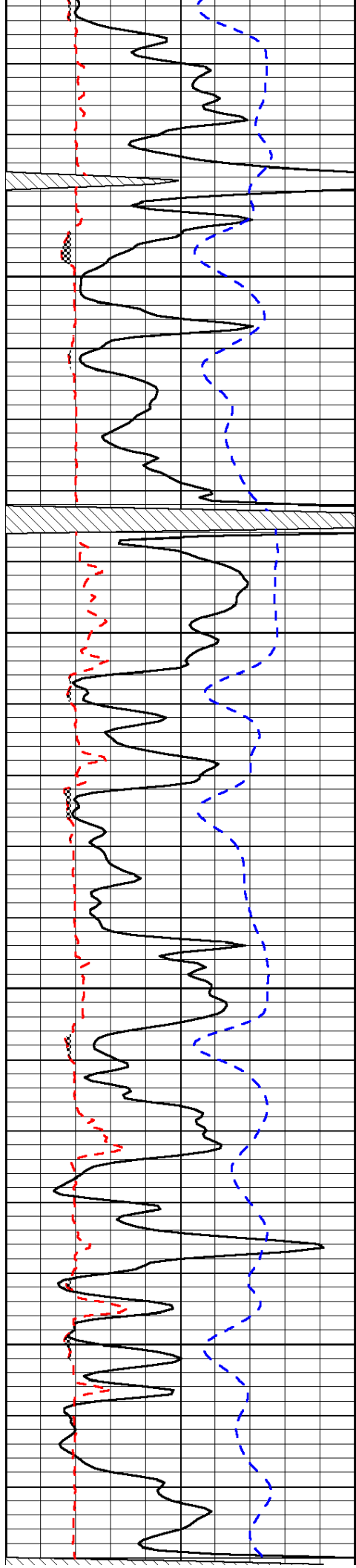
0	Gamma Ray	150
6	Micro Log Caliper (GAPI)	16
-200	SP (mV)	0

0	Micro Inverse 1 X 1	40
0	Micro Normal 2"	40
15000	Line Weight	0

LSPD





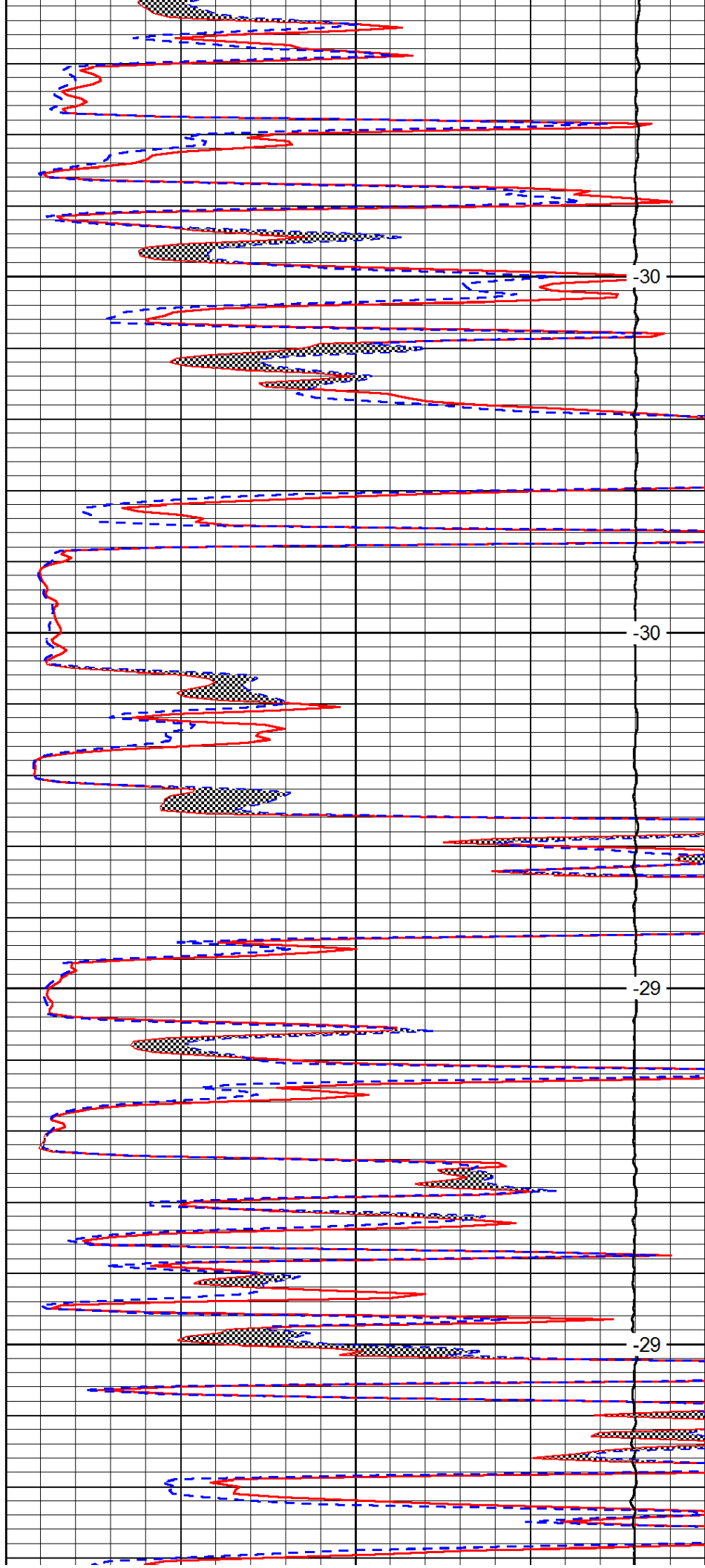


3250

3300

3350

3400

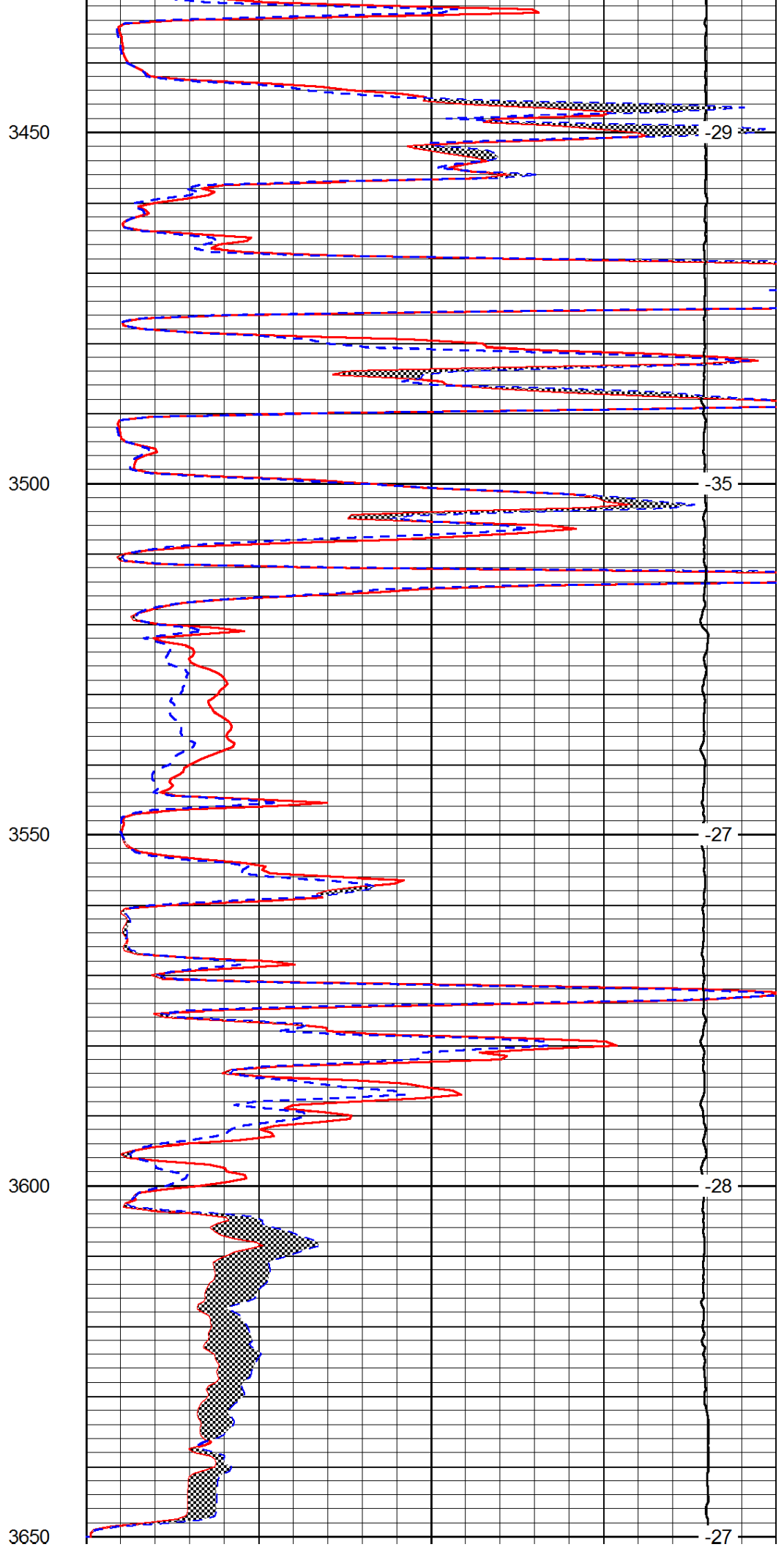
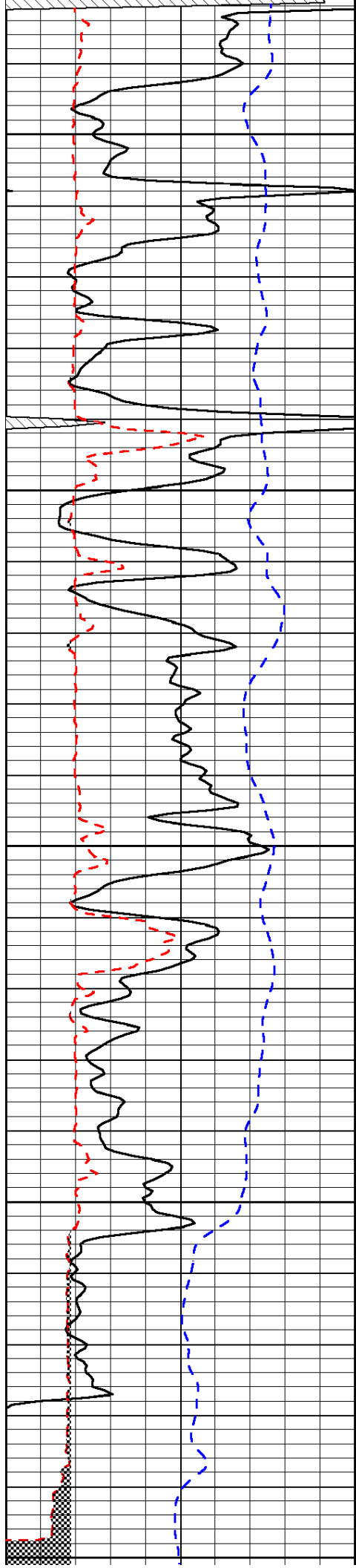


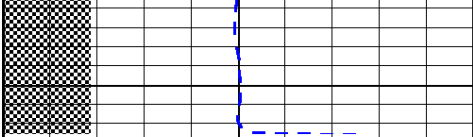
-30

-30

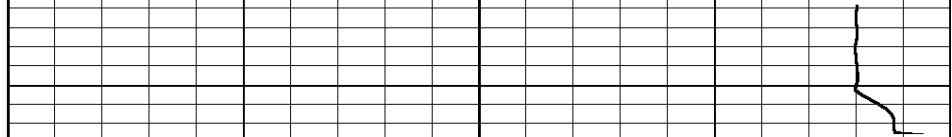
-29

-29





0	Gamma Ray	150
6	Micro Log Caliper (GAPI)	16
-200	SP (mV)	0



0	Micro Inverse 1 X 1	40
0	Micro Normal 2"	40
15000	Line Weight	0

LSPD