



Pioneer Energy Services

# Dual Induction Log

15-035-24571-00-00

API No.

Company **Toto Energy, LLC**

Well **Best Sellers #1**

Field **Moon**

County **Cowley**

State

**Kansas**

Location **990' FNL & 990' FEL**

Other Services  
CNL/CDL  
MEL

Sec: **26**

Twp: **32S**

Rge: **5E**

Permanent Datum **Ground Level**

Elevation **1314**

Log Measured From **Kelly Bushing**

10 Ft. Above Perm. Datum

Elevation  
K.B. 1324  
D.F. 1314  
G.L. 1314

Date

5/26/2014

Run Number

One

Depth Driller

3630

Depth Logger

3624

Bottom Logged Interval

3623

Top Log Interval

250

Casing Driller

8.625 @ 275

Casing Logger

273

Bit Size

7.875

Type Fluid in Hole

Chemical

Salinity,ppm CL

1000

Density / Viscosity

9.2 50

pH / Fluid Loss

9.5 6.8

Source of Sample

Flowline

Rm @ Meas. Temp

1.50 @ 68

Rmf @ Meas. Temp

1.13 @ 68

Rmc @ Meas. Temp

2.03 @ 68

Source of Rmf / Rmc

Charts

Rm @ BHT

0.89 @ 114

Operating Rig Time

4 Hours

Max Rec. Temp. F

114

Equipment Number

91

Location

Hays

Recorded By

D. Schmidt

Witnessed By

Troy Fowler

<<< Fold Here >>>

All interpretations are opinions based on inferences from electrical or other measurements and we cannot and do not guarantee the accuracy or correctness of any interpretation, and we shall not, except in the case of gross or willful negligence on our part, be liable or responsible for any loss, costs, damages, or expenses incurred or sustained by anyone resulting from any interpretation made by any of our officers, agents or employees. These interpretations are also subject to our general terms and conditions set out in our current Price Schedule.

## Comments

Thank you for using Pioneer Energy Services  
[www.pioneerenergy.com](http://www.pioneerenergy.com)  
 785 625 3858  
 Winfield,  
 7 East to 721 Rd, 1/2 South,  
 West & North into

Database File: c:\warrior\data\toto\_best sellers #1\toto\_best sellers\_1hd.db  
 Dataset Pathname: dil\tostack  
 Presentation Format: dil2in  
 Dataset Creation: Tue May 27 00:25:18 2014  
 Charted by: Depth in Feet scaled 1:600

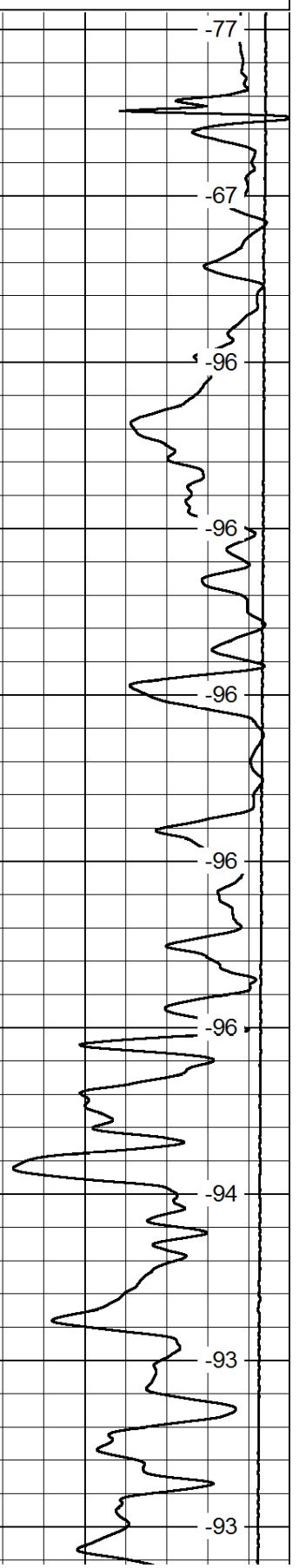
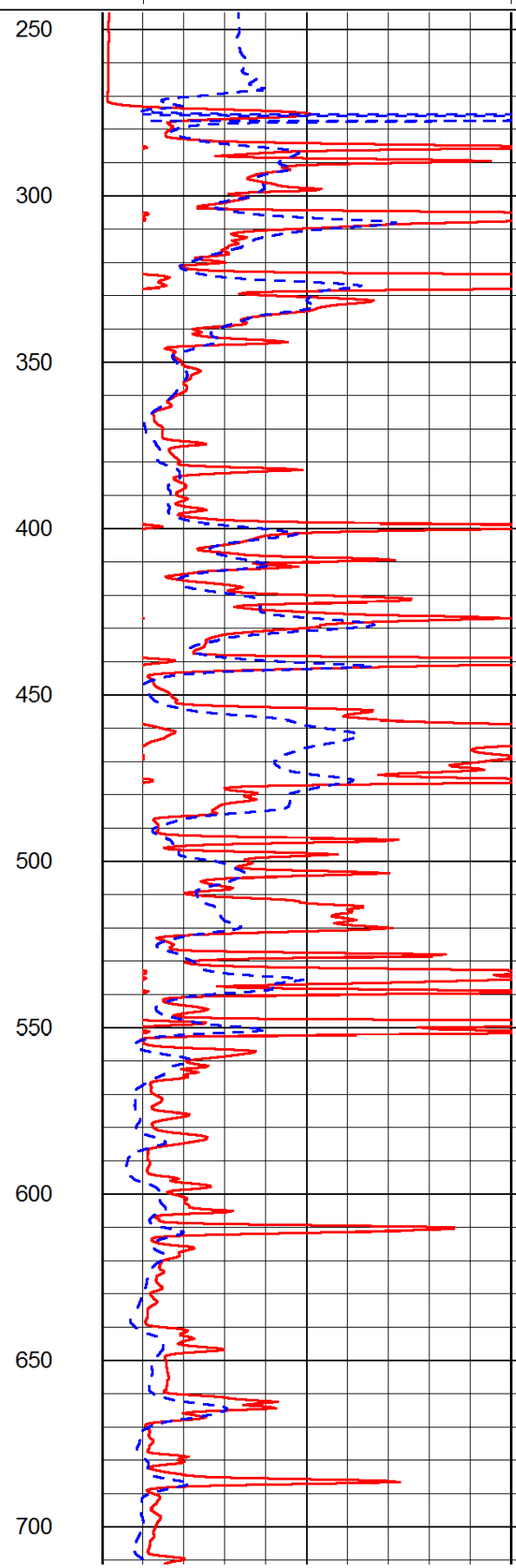
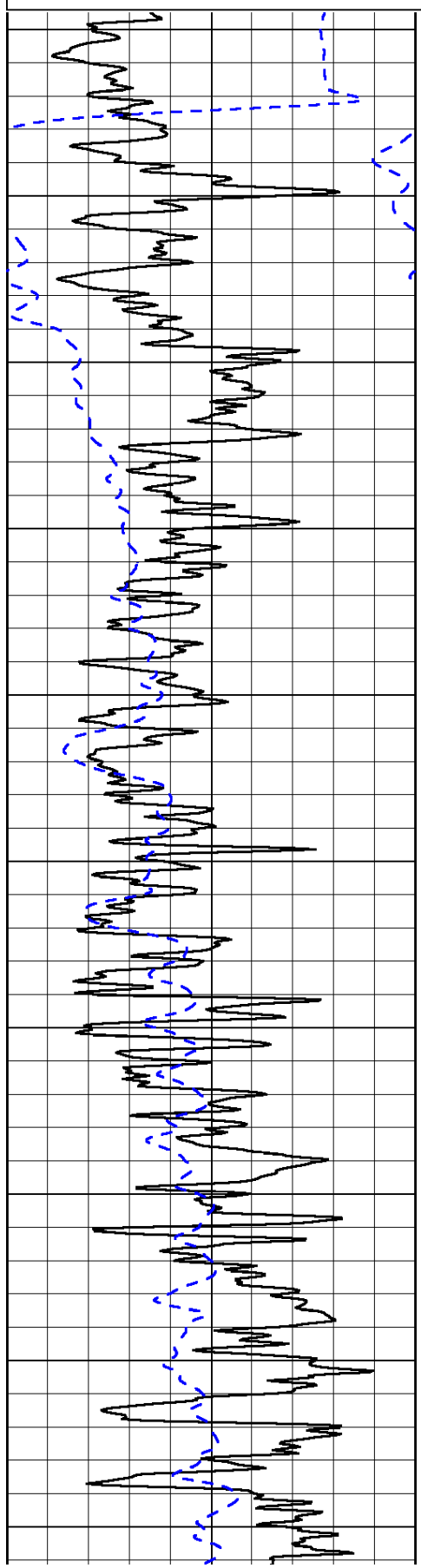
|      |           |     |
|------|-----------|-----|
| 0    | Gamma Ray | 150 |
| -200 | SP (mV)   | 0   |

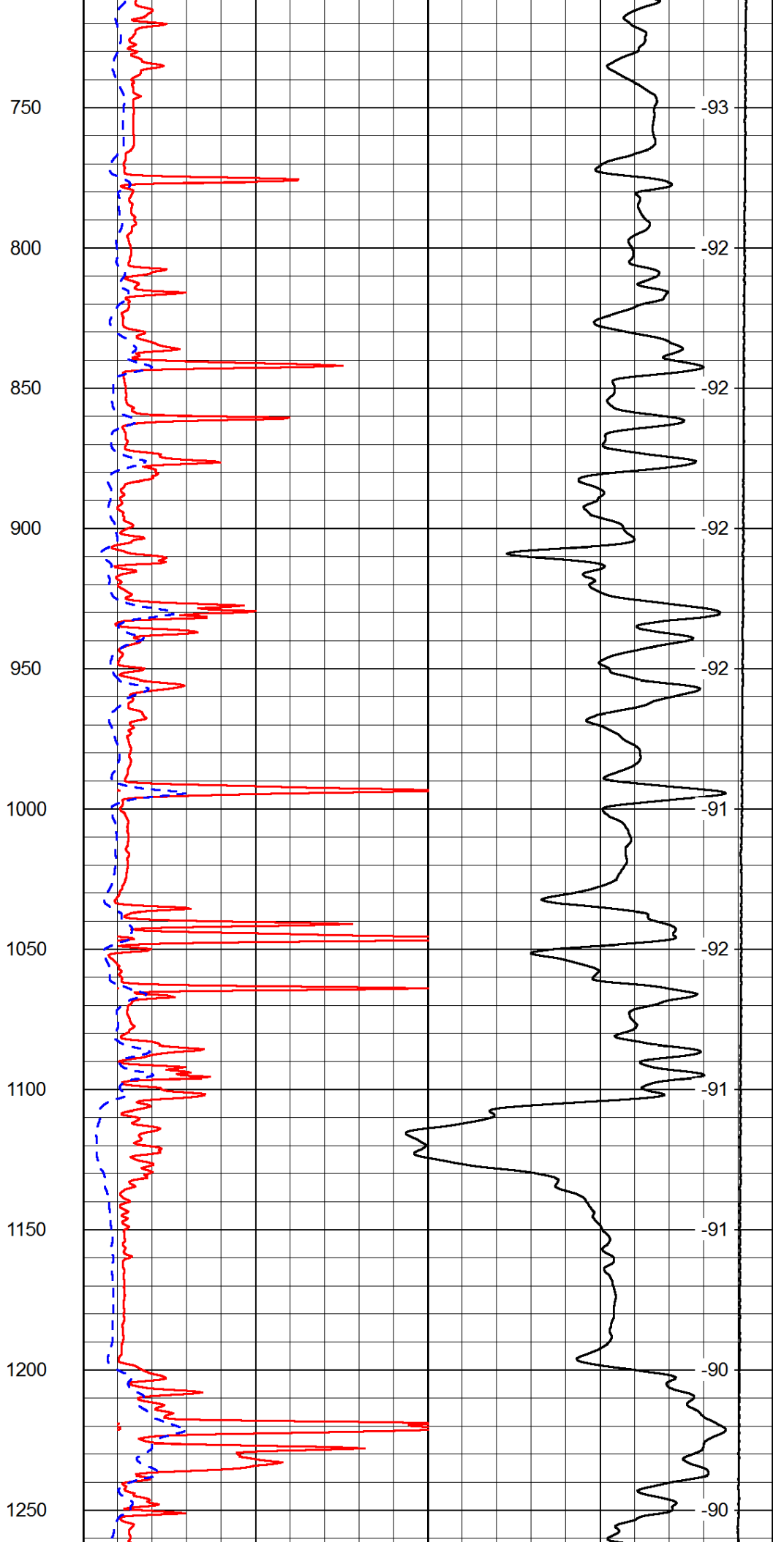
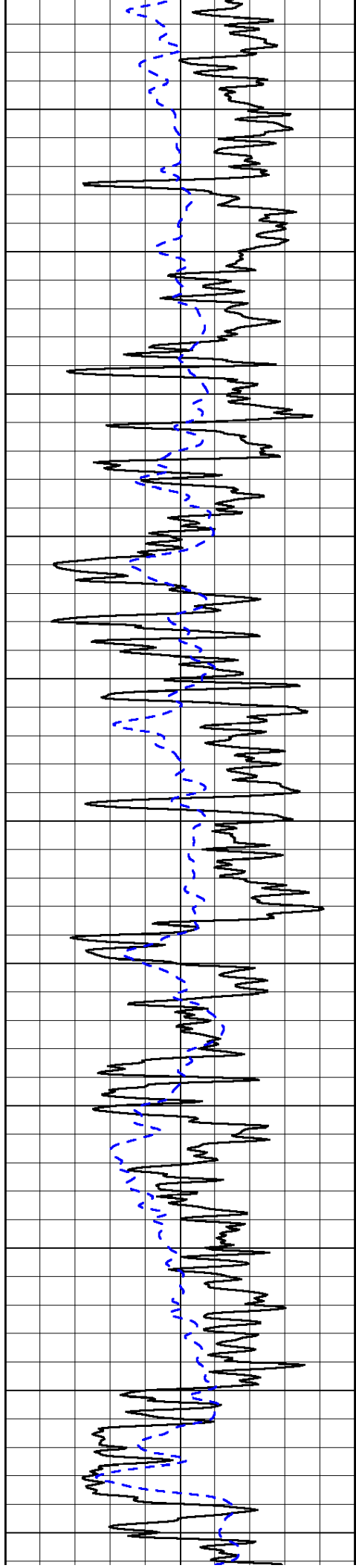
|   |                     |    |
|---|---------------------|----|
| 0 | Shallow Resistivity | 50 |
| 0 | Deep Resistivity    | 50 |

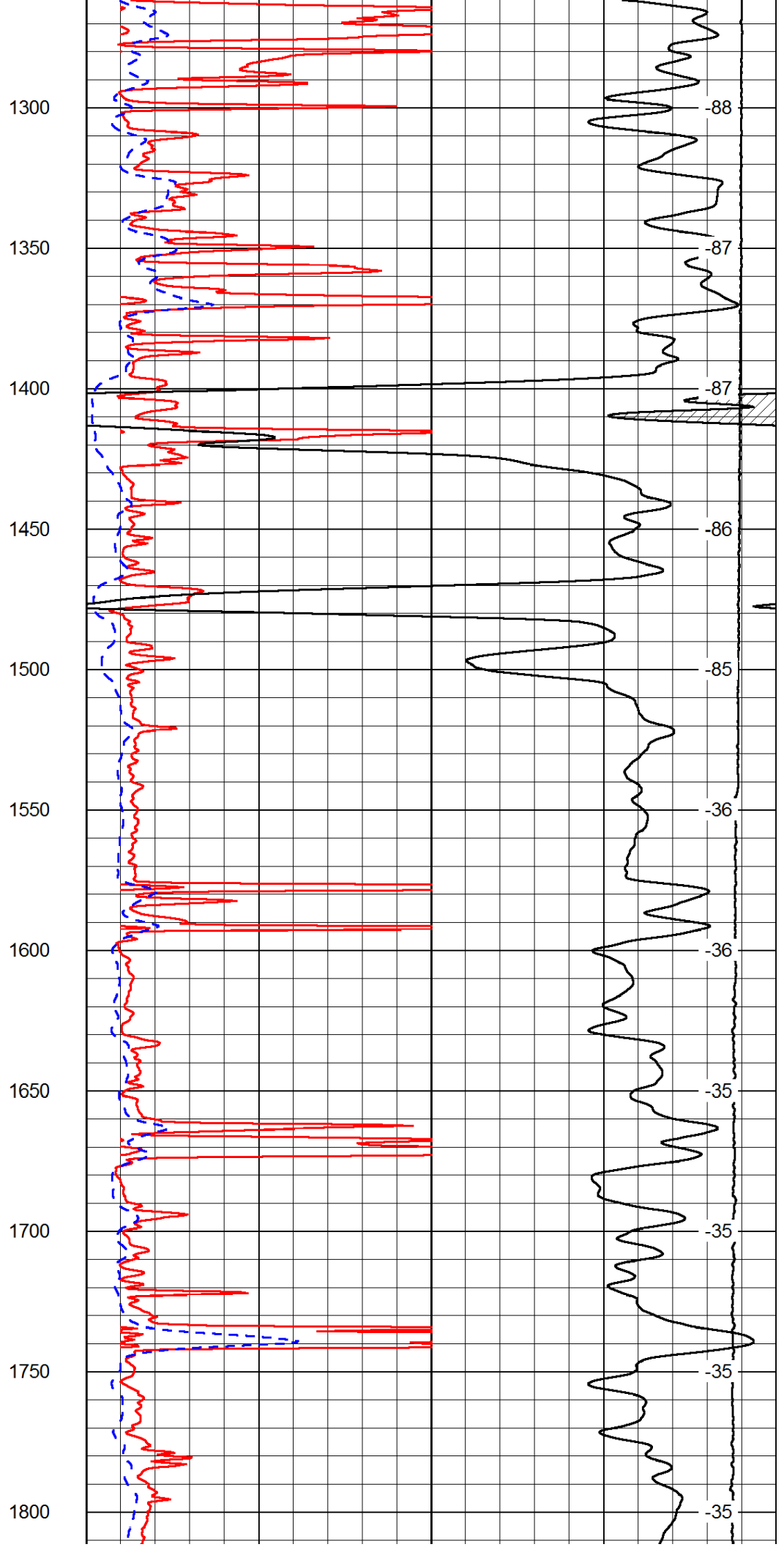
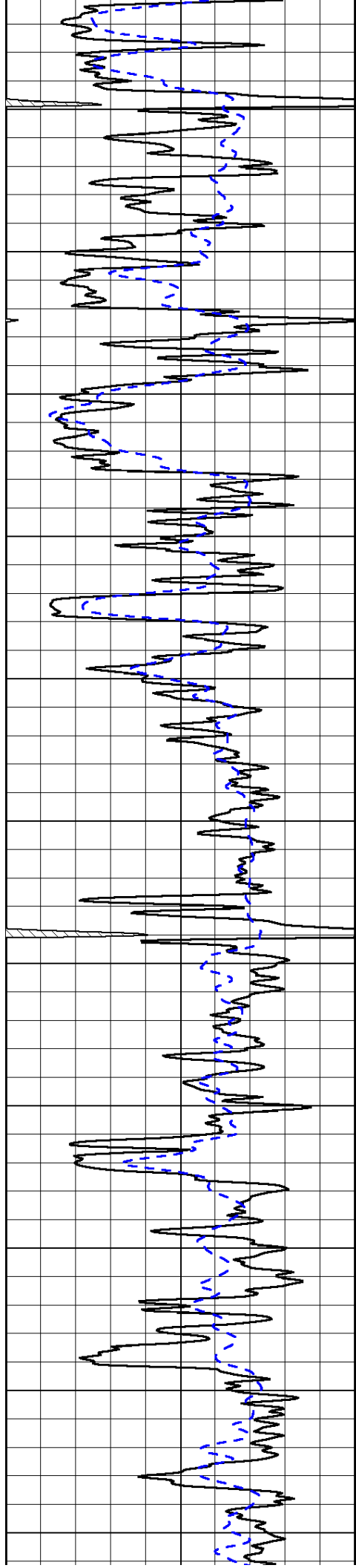
LSPD

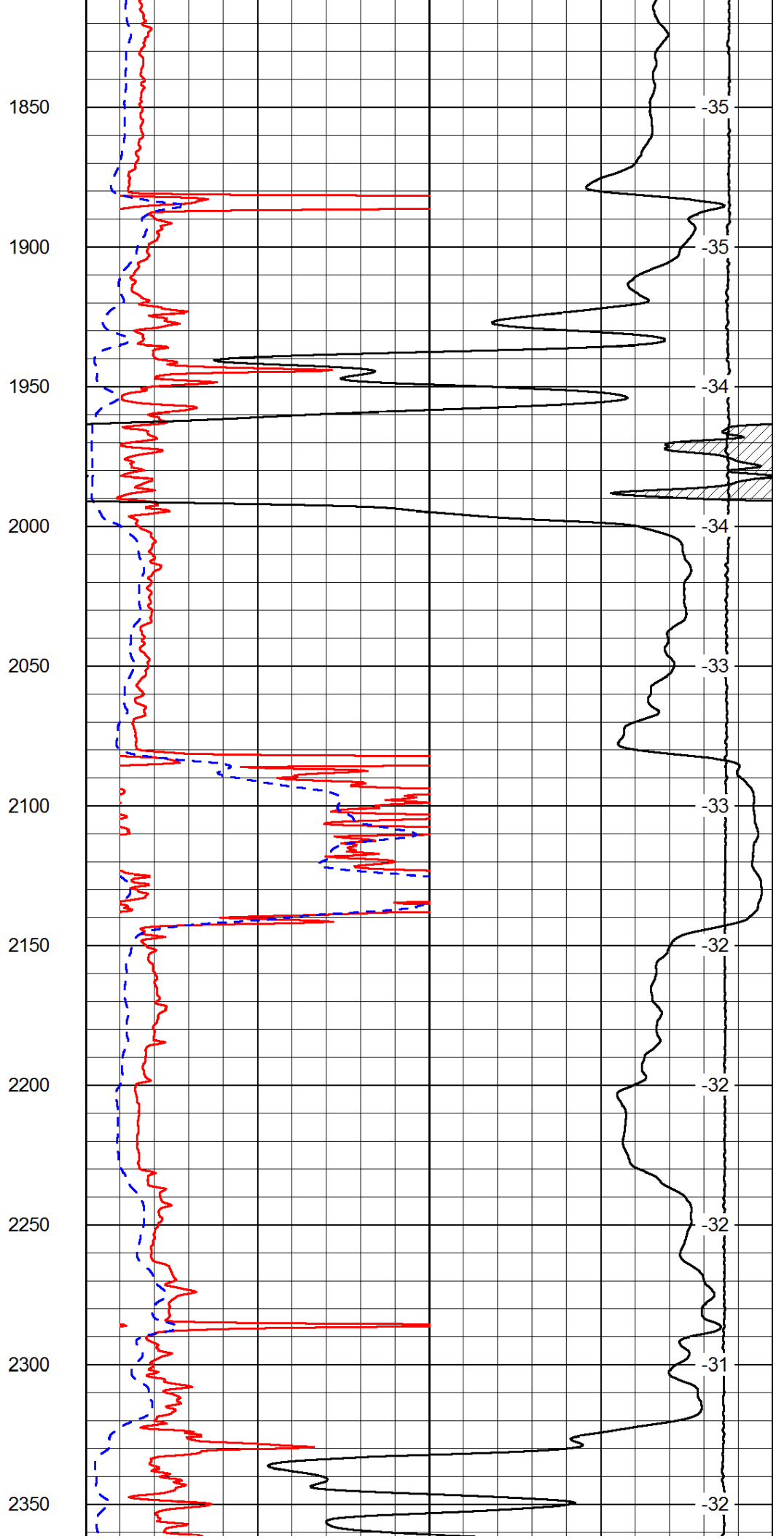
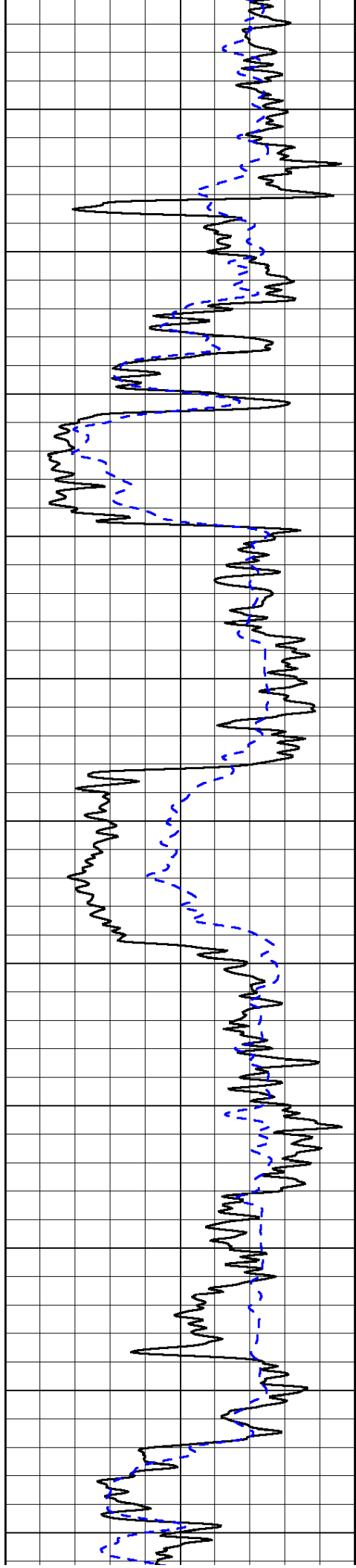
|       |              |   |
|-------|--------------|---|
| 1000  | Conductivity | 0 |
| 15000 | Line Tension | 0 |

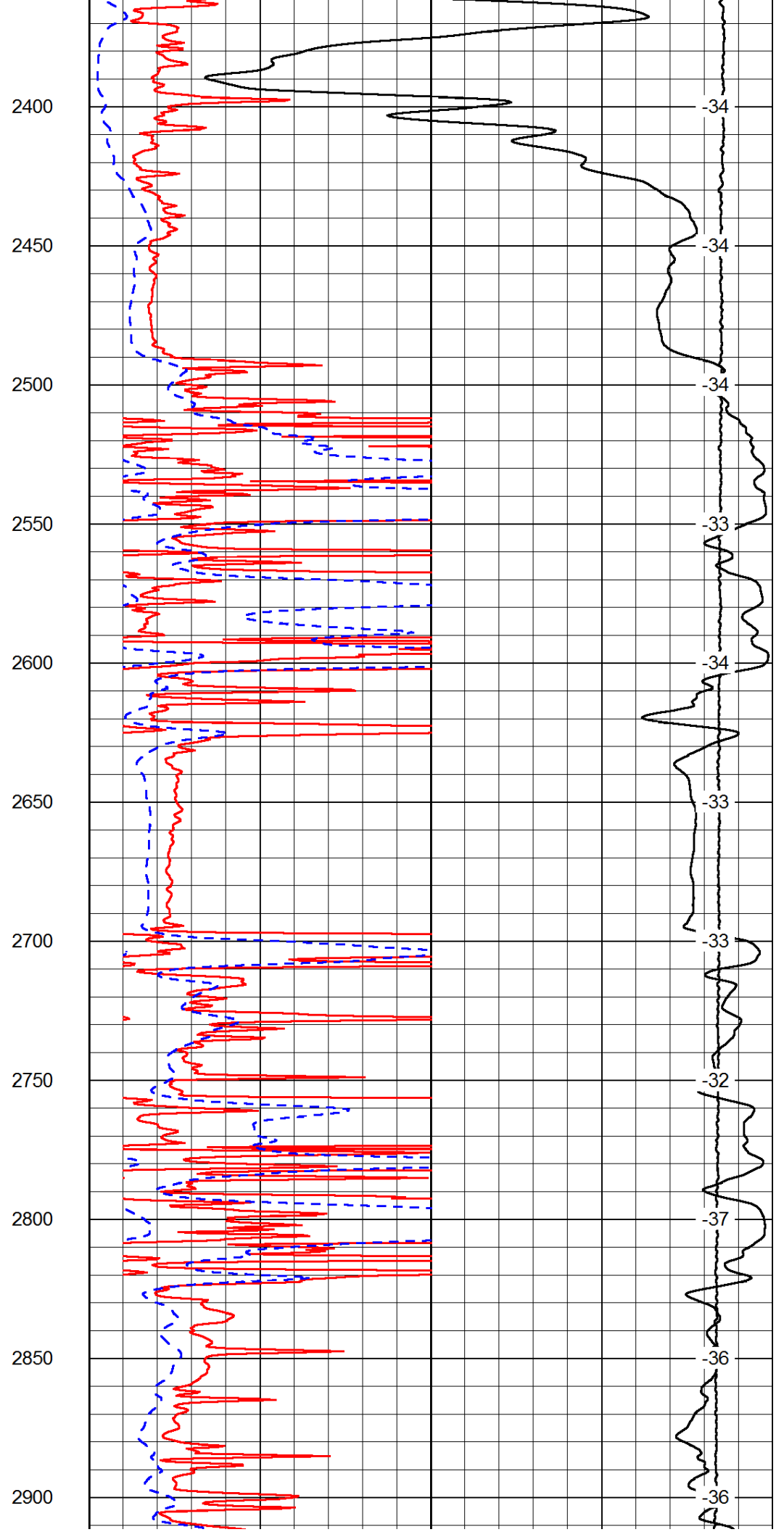
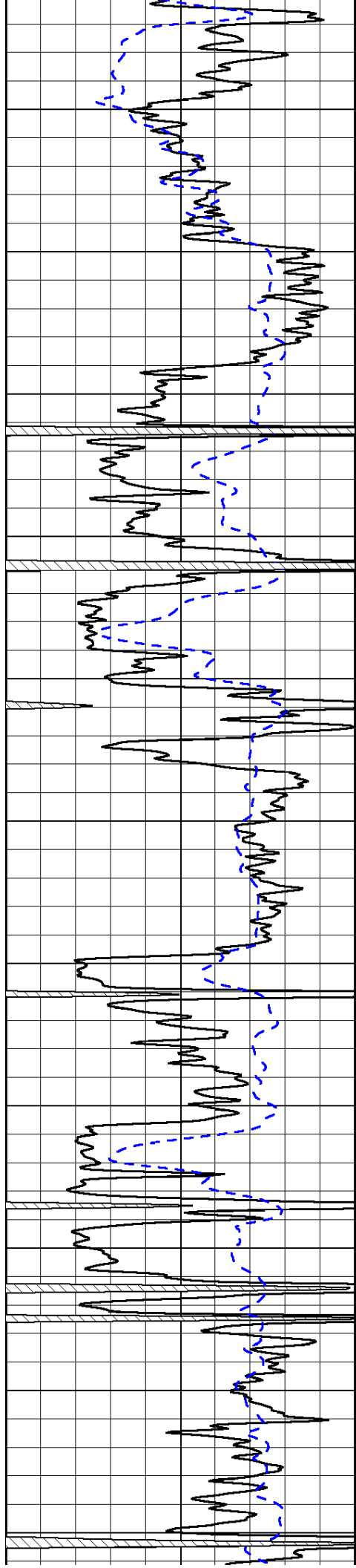
|    |                     |     |
|----|---------------------|-----|
| 50 | Shallow Resistivity | 500 |
| 50 | Deep Resistivity    | 500 |

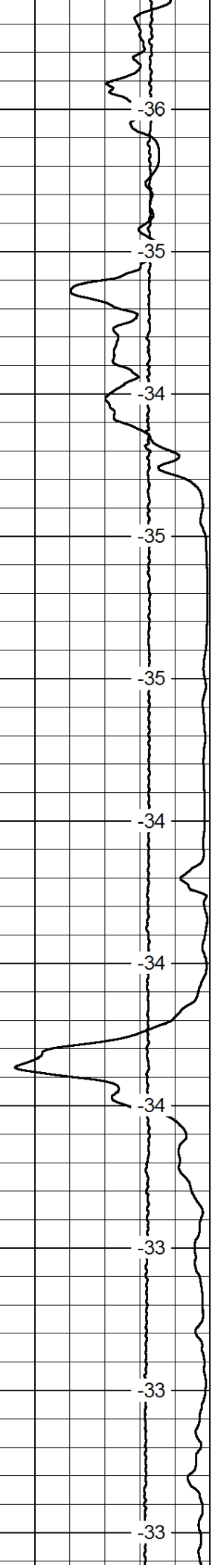
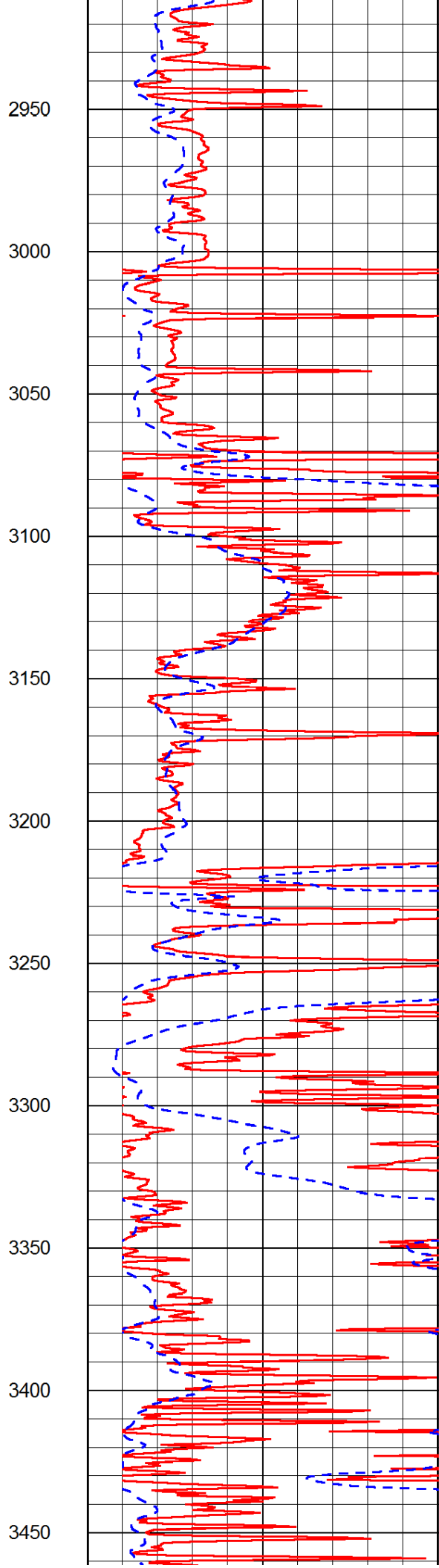
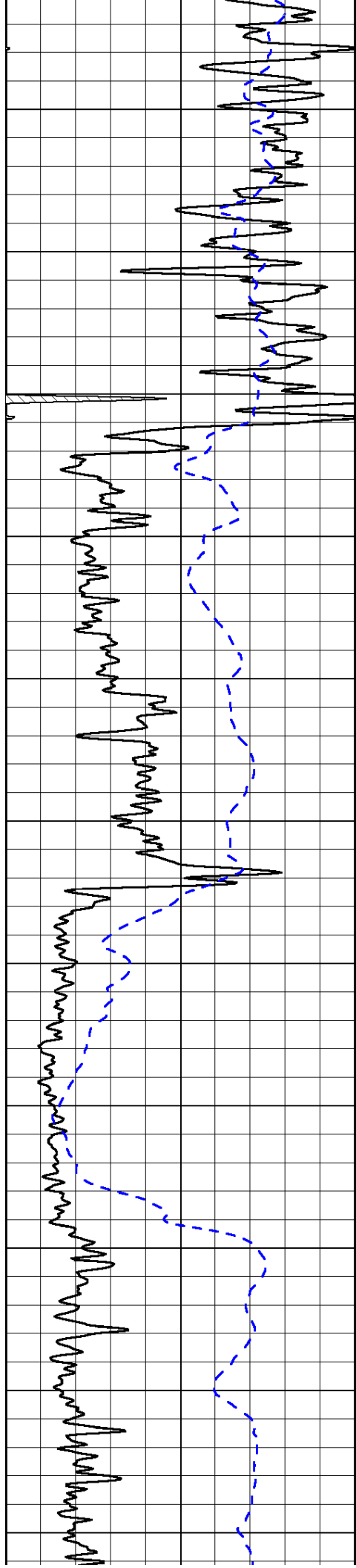


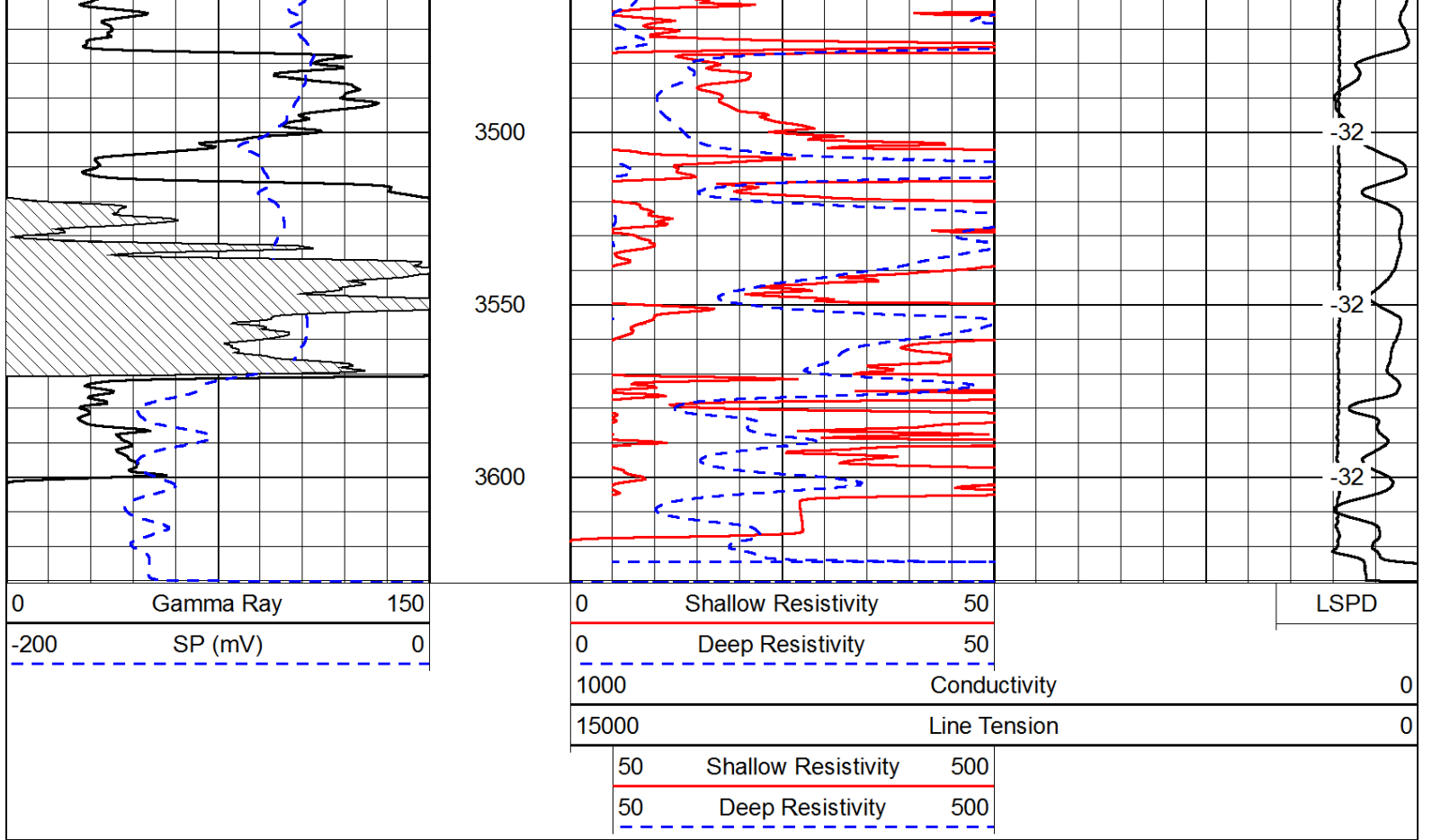




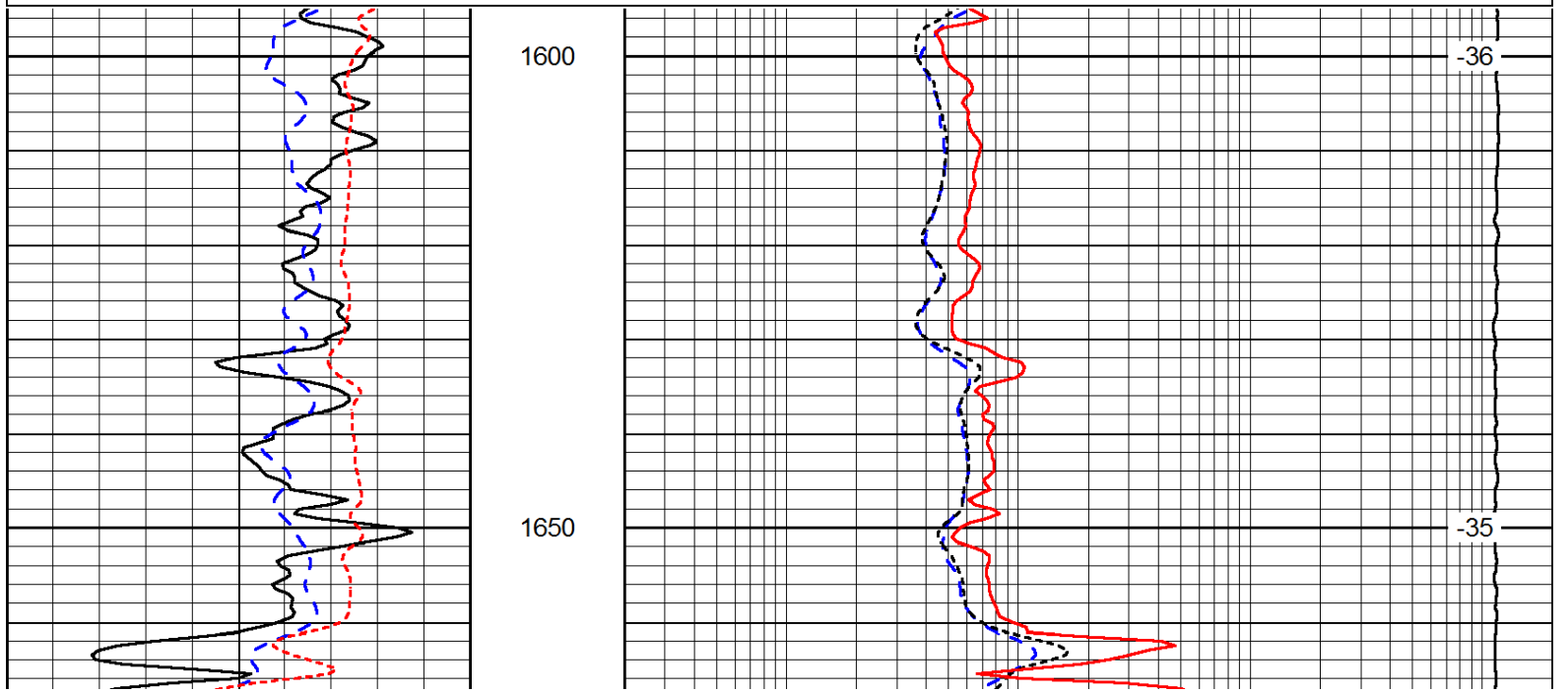
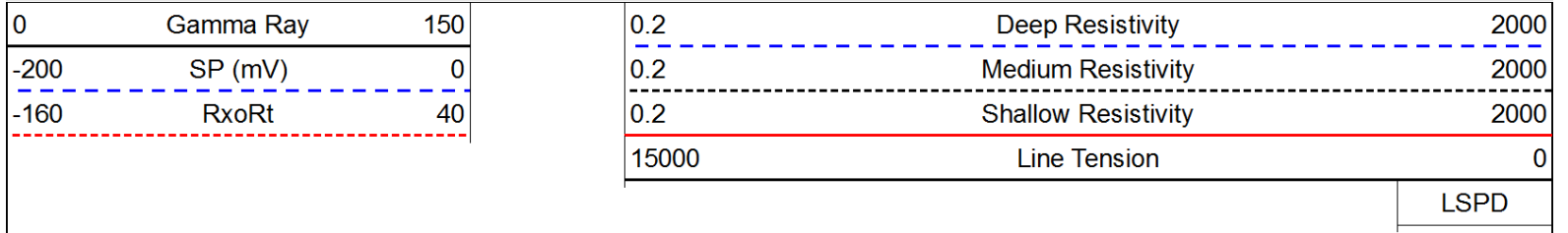


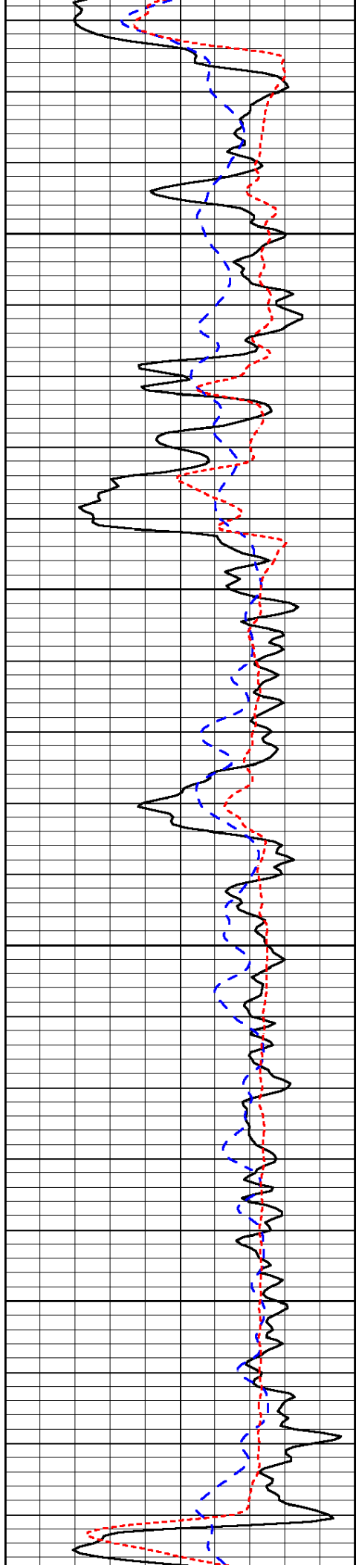






Database File: c:\warrior\data\toto\_best sellers #1\toto\_best sellers\_1hd.db  
 Dataset Pathname: dil/tostack  
 Presentation Format: dil  
 Dataset Creation: Tue May 27 00:25:18 2014  
 Charted by: Depth in Feet scaled 1:240



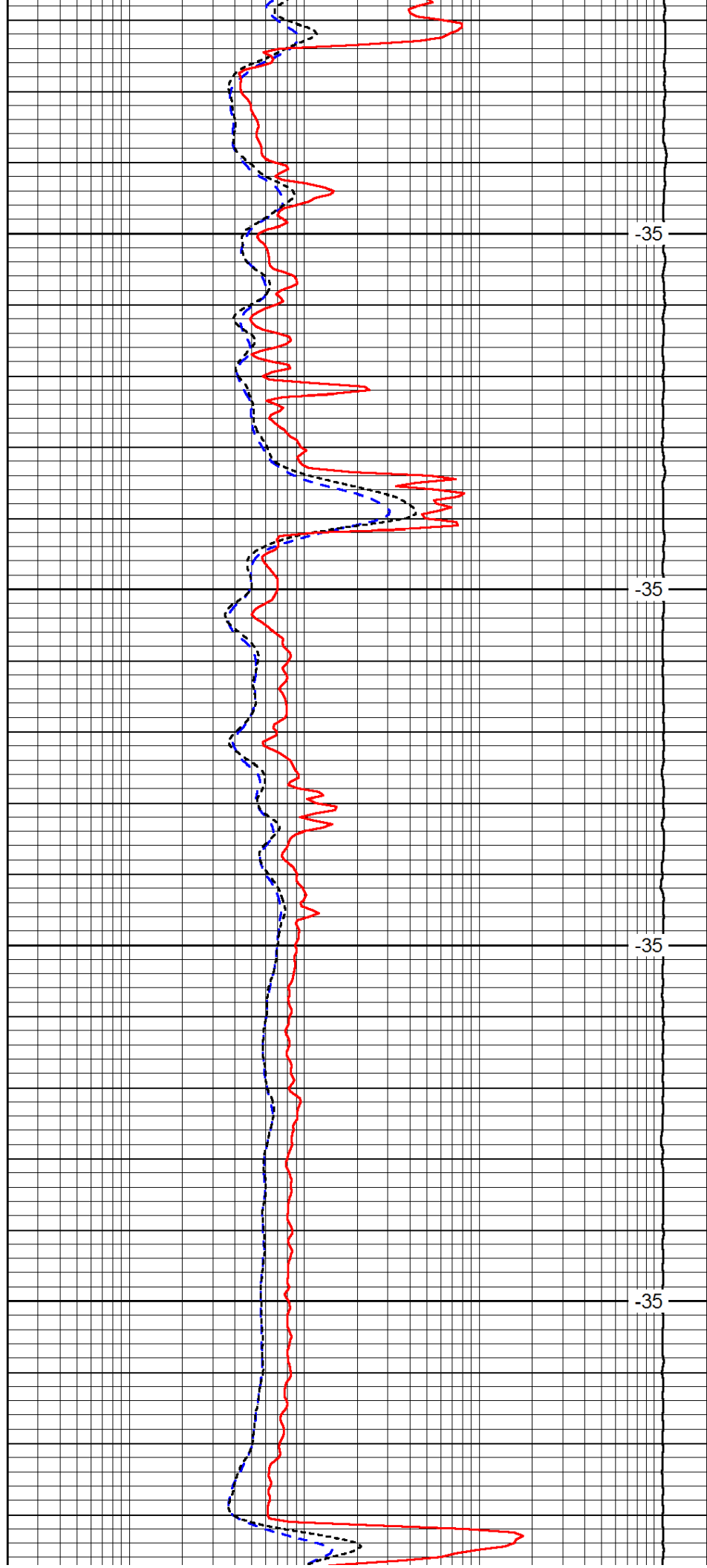


1700

1750

1800

1850

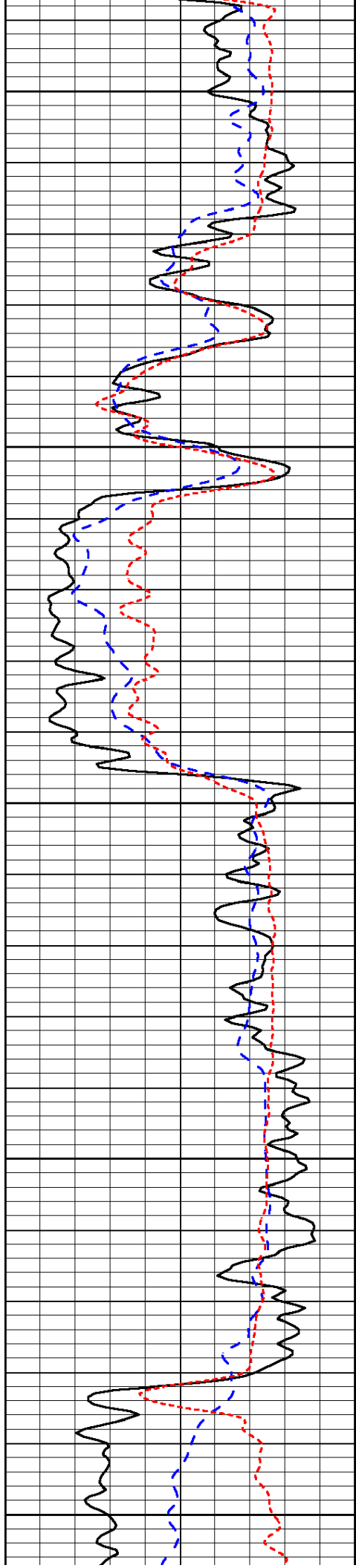


-35

-35

-35

-35



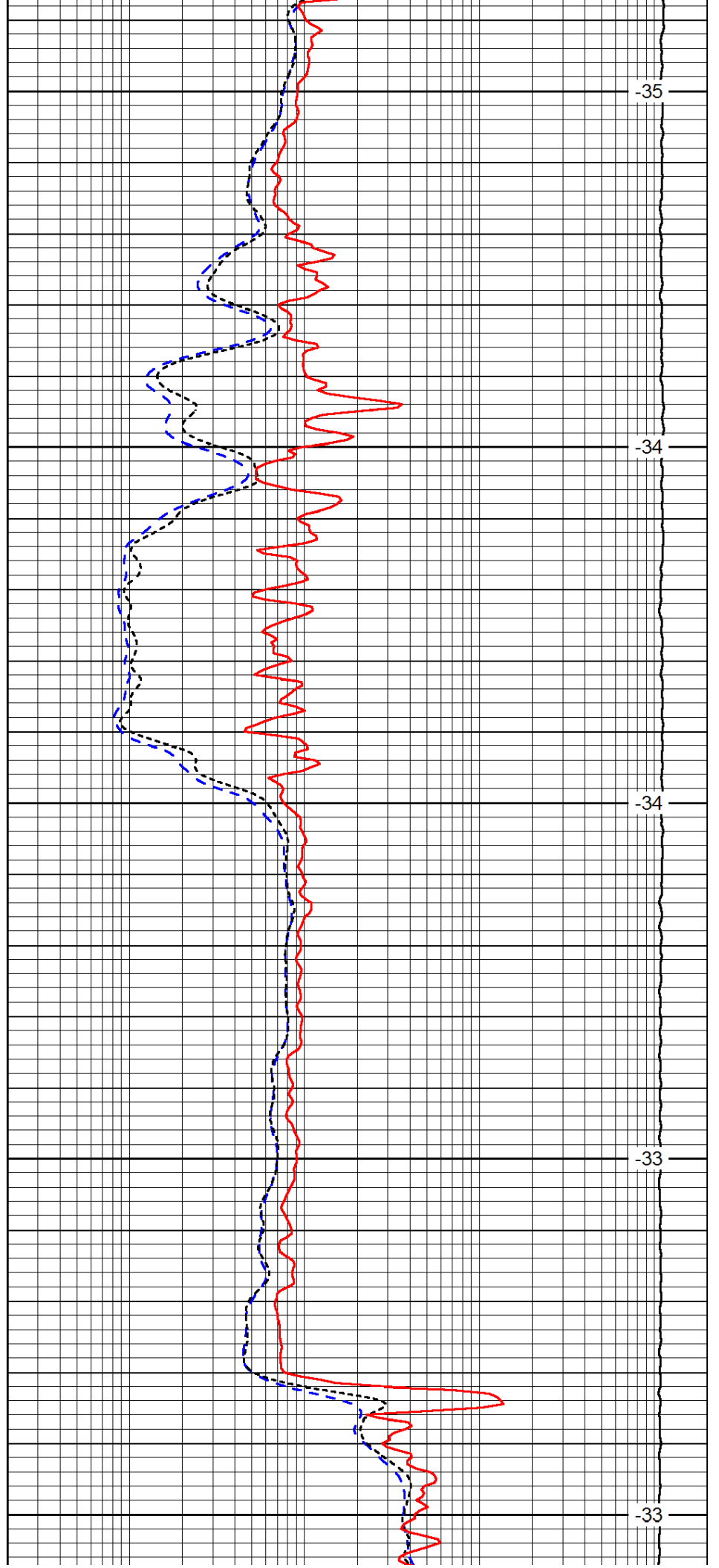
1900

1950

2000

2050

2100



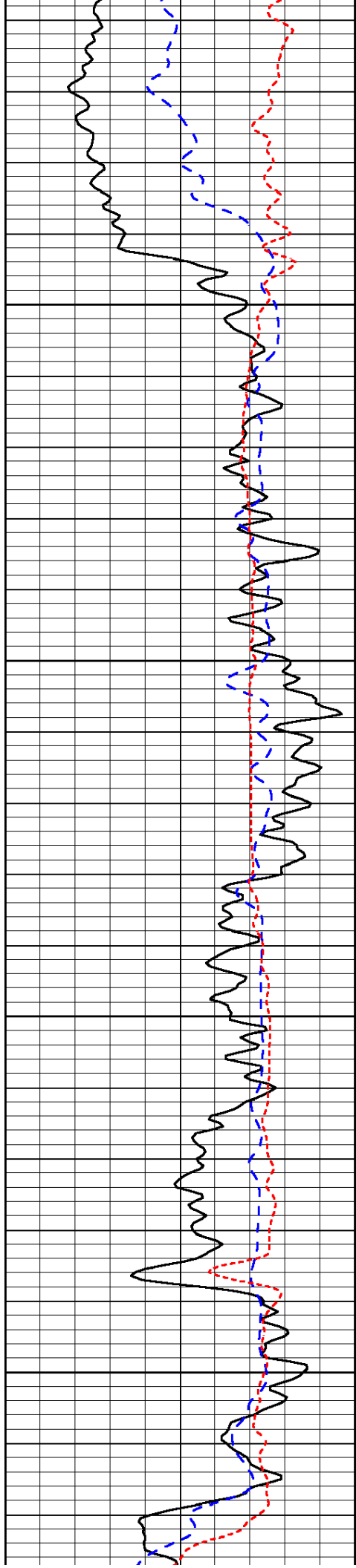
-35

-34

-34

-33

-33

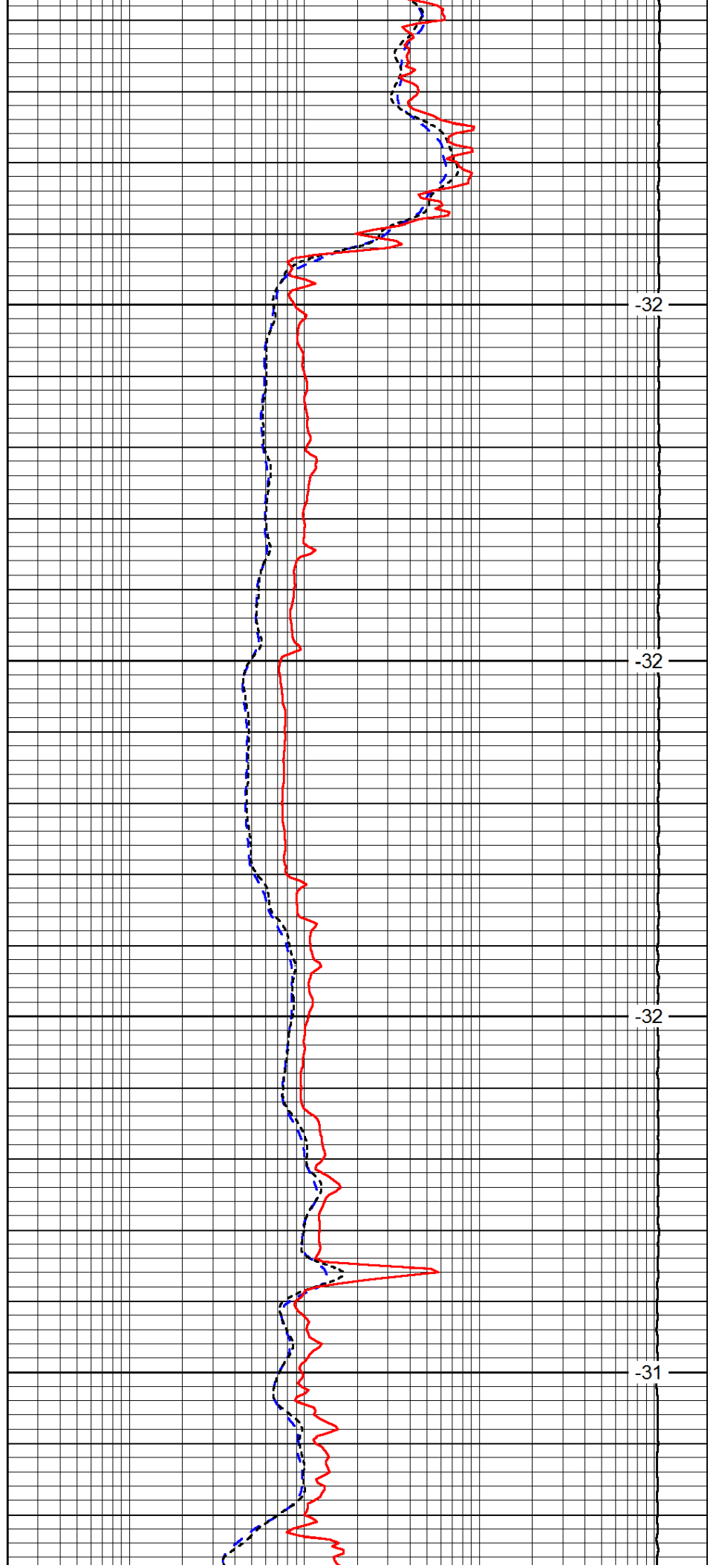


2150

2200

2250

2300

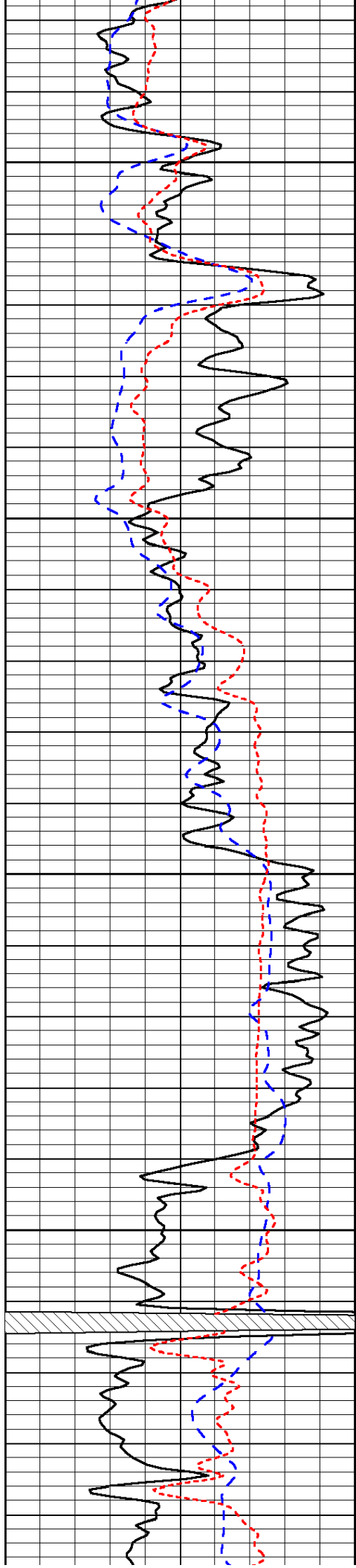


-32

-32

-32

-31

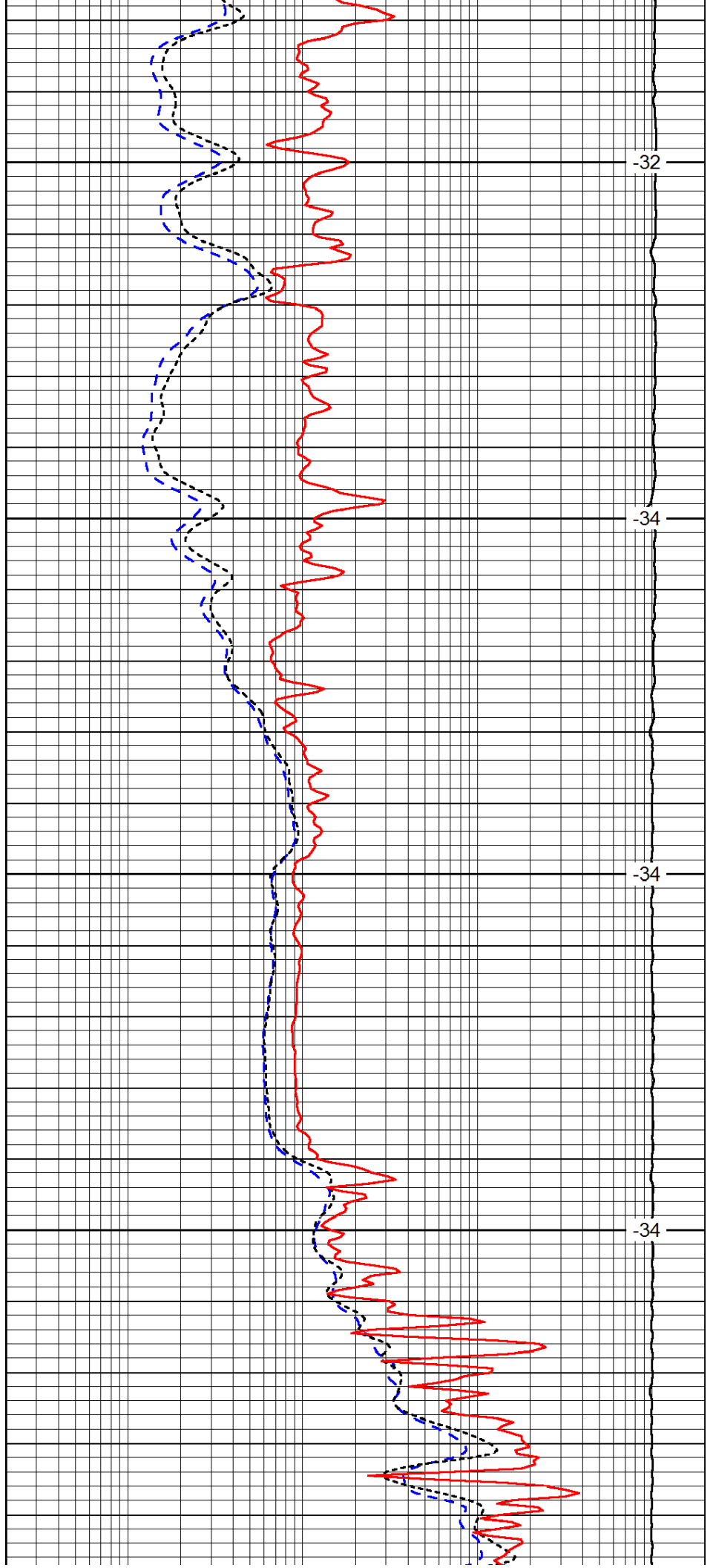


2350

2400

2450

2500

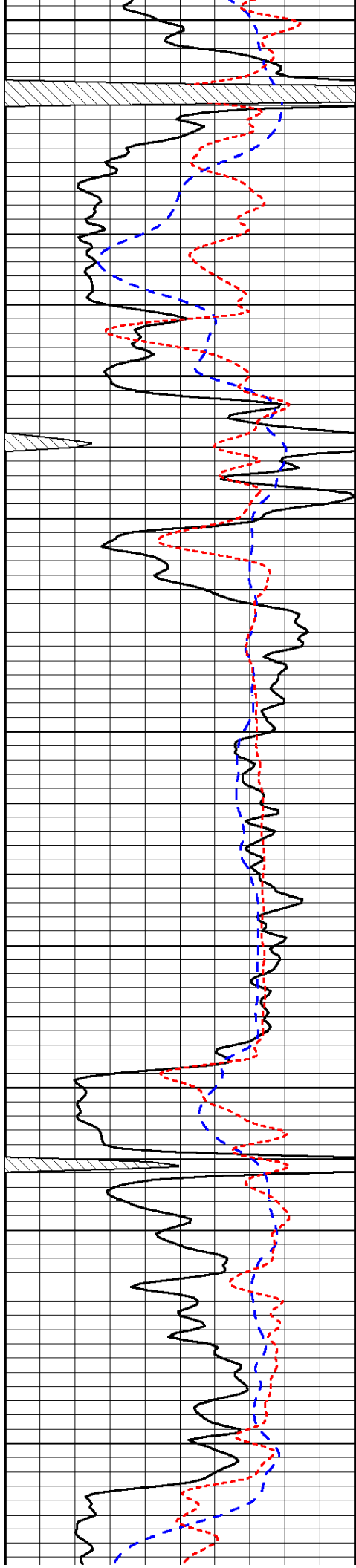


-32

-34

-34

-34



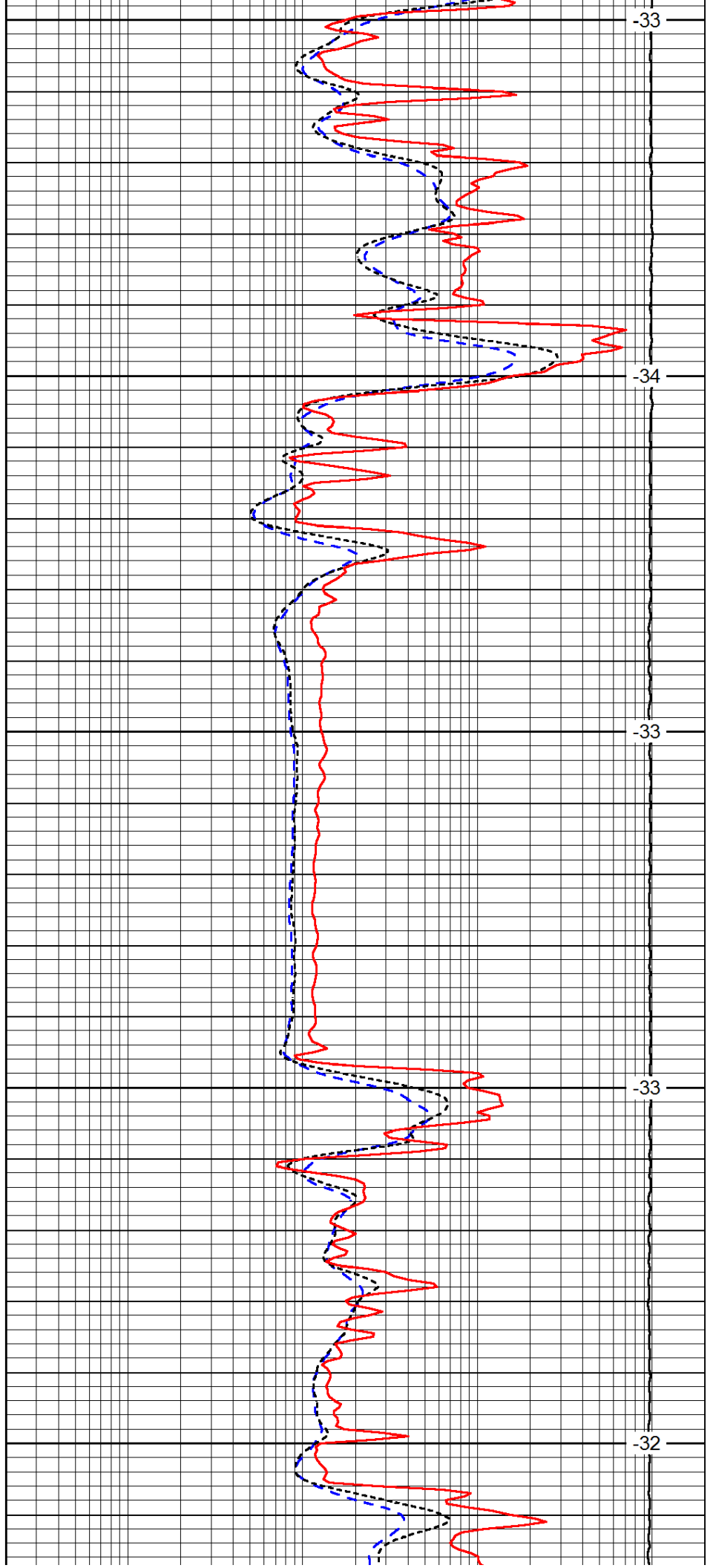
2550

2600

2650

2700

2750



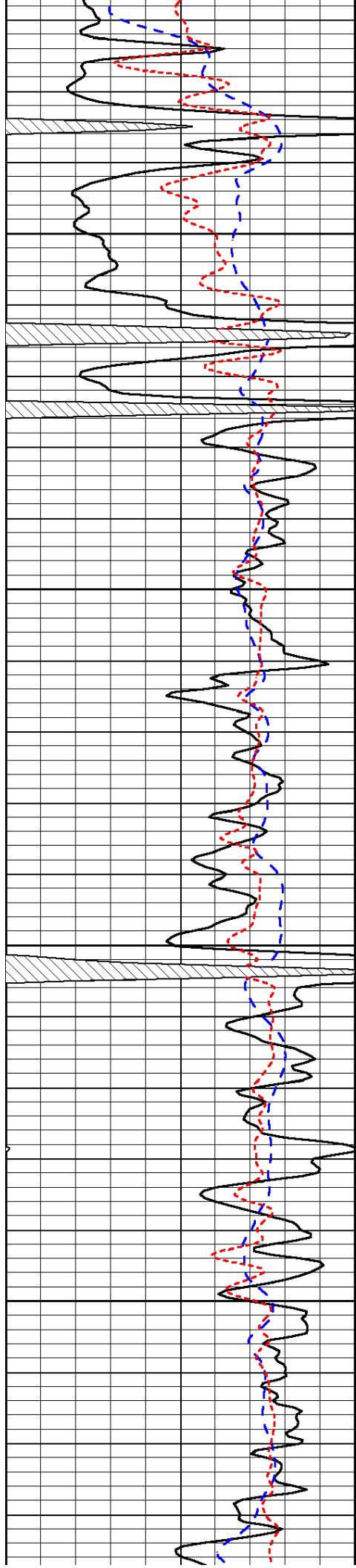
-33

-34

-33

-33

-32

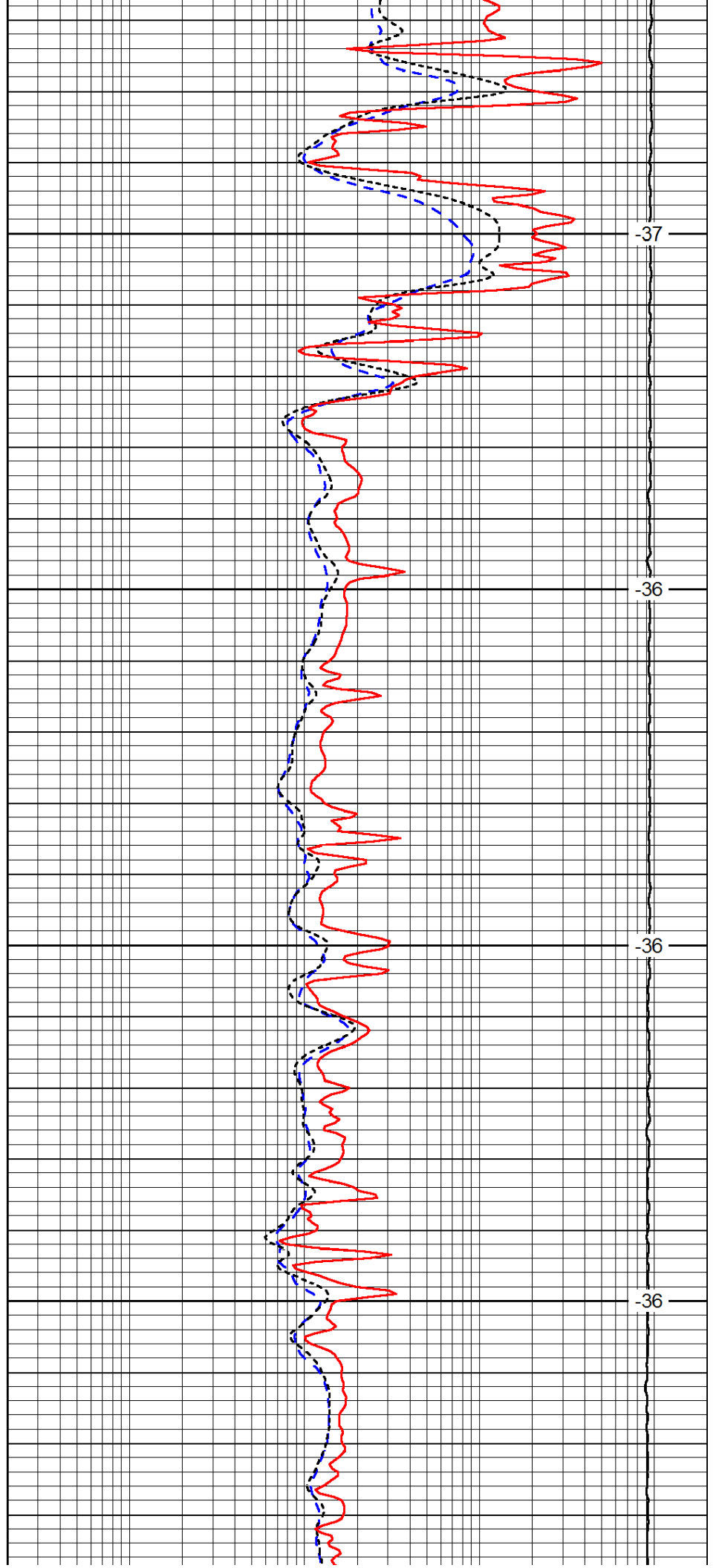


2800

2850

2900

2950

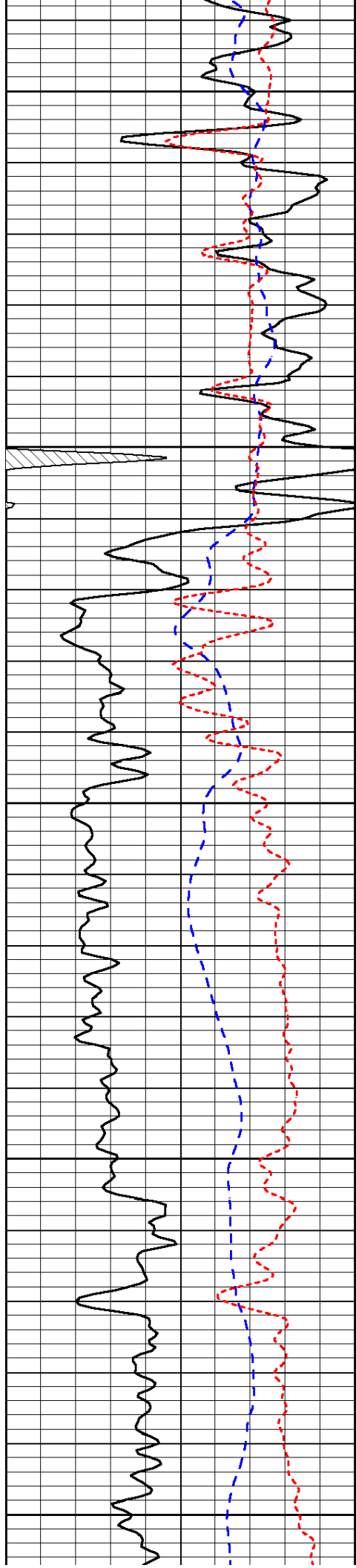


-37

-36

-36

-36



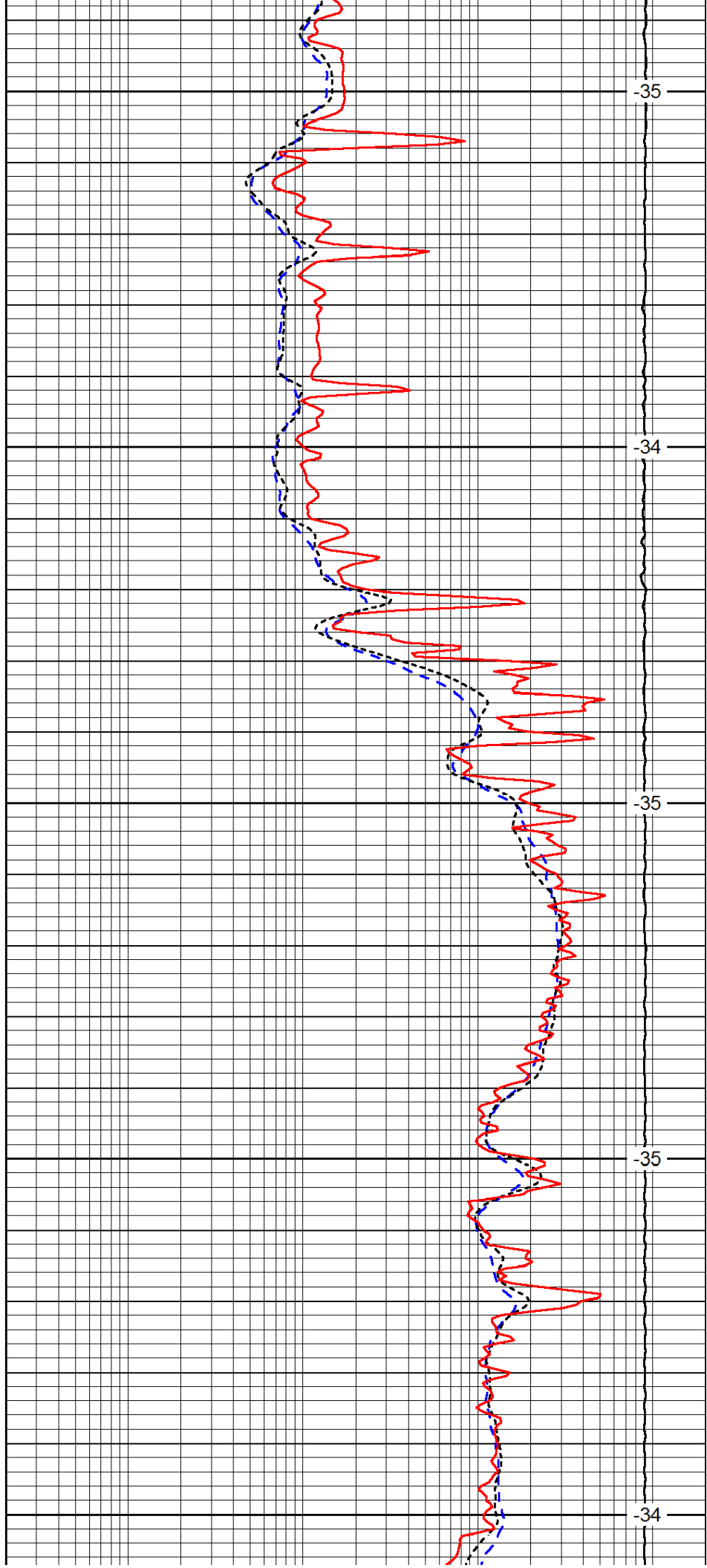
3000

3050

3100

3150

3200



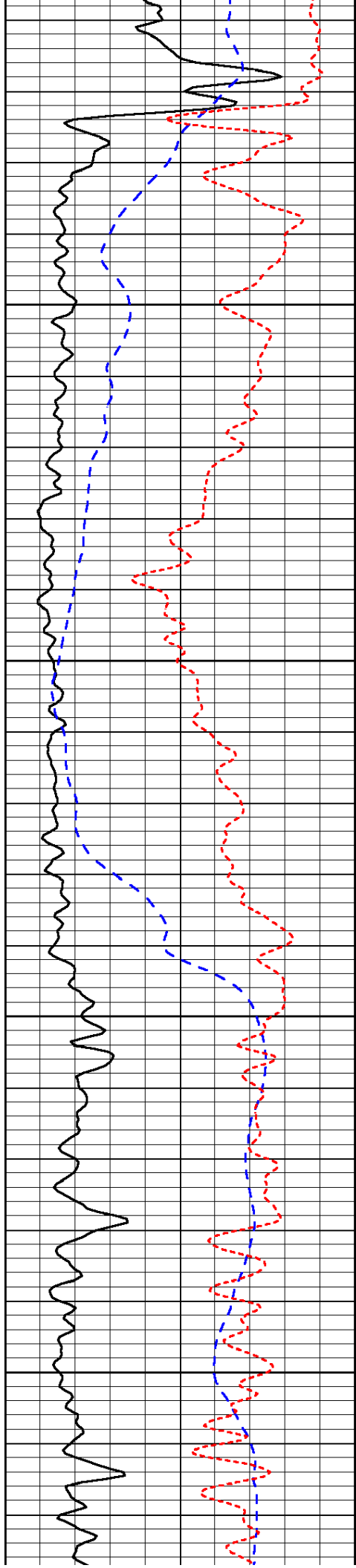
-35

-34

-35

-35

-34

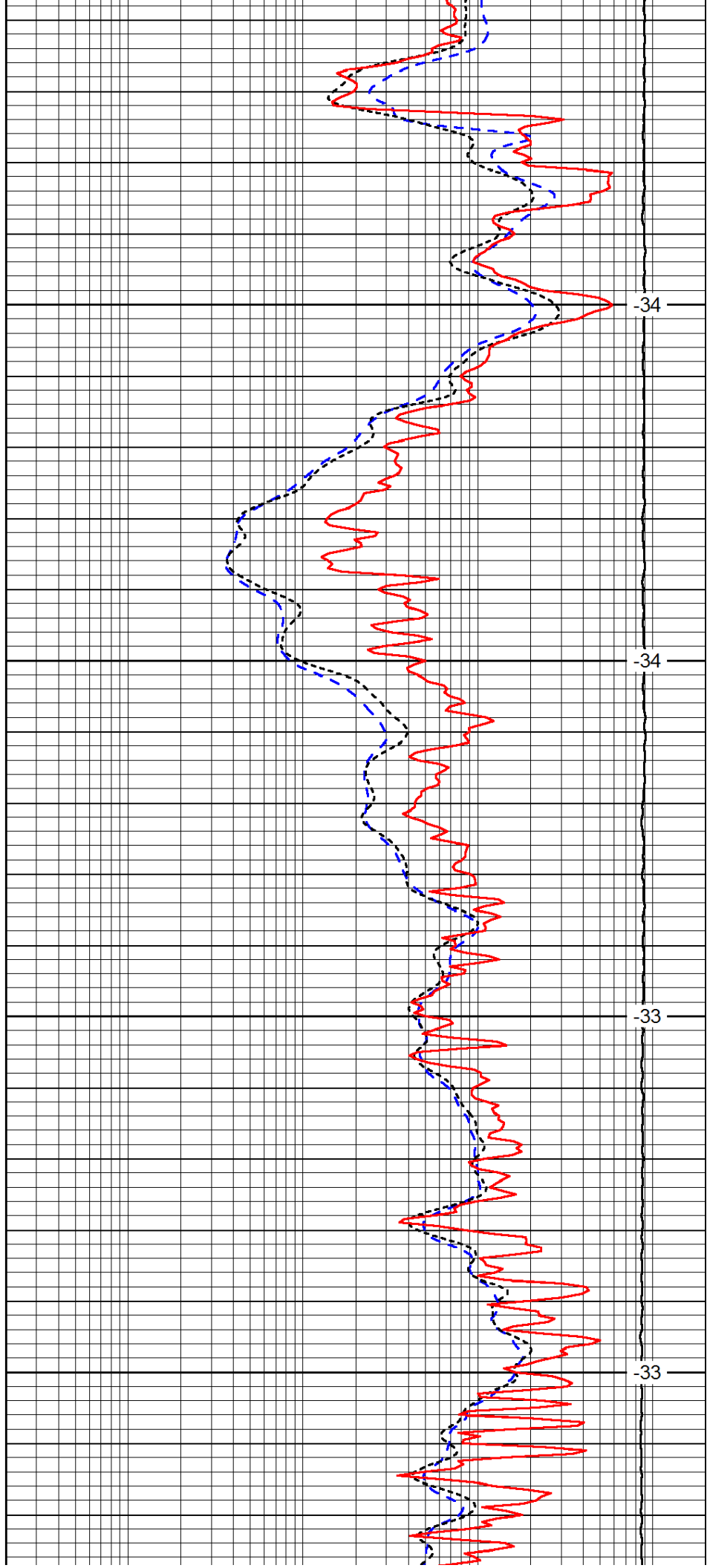


3250

3300

3350

3400

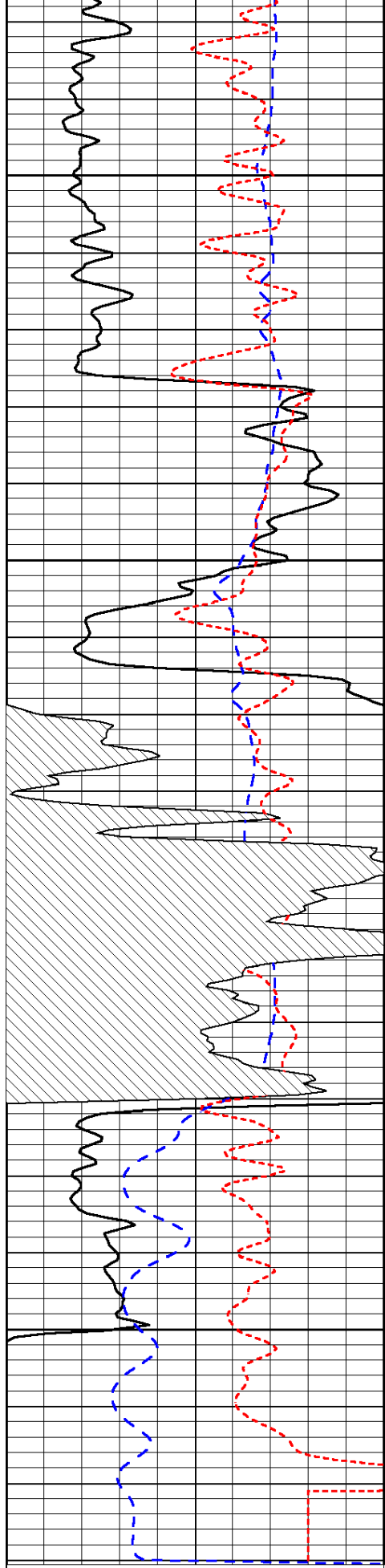


-34

-34

-33

-33



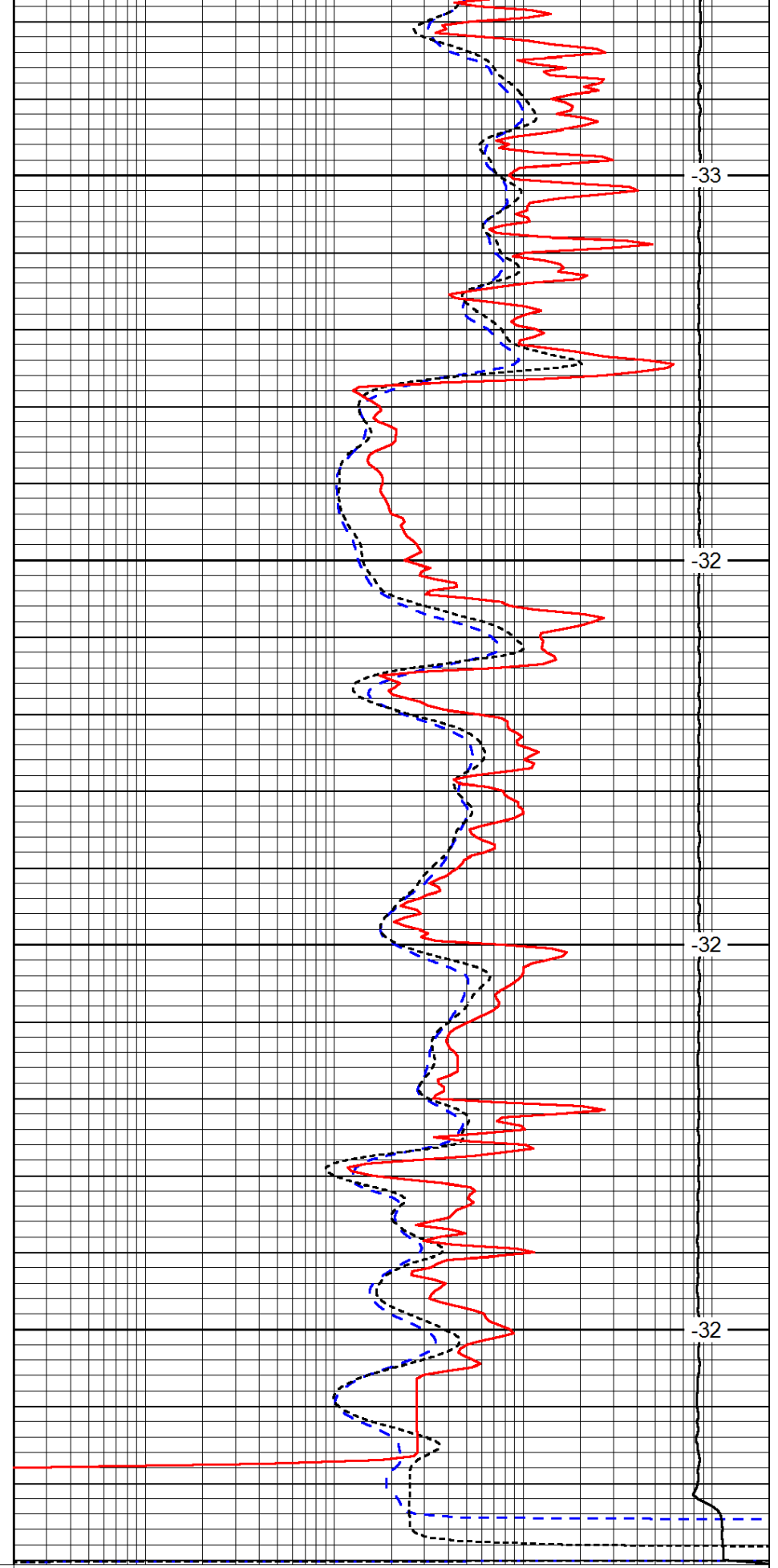
|      |           |     |
|------|-----------|-----|
| 0    | Gamma Ray | 150 |
| -200 | SP (mV)   | 0   |
| -160 | RxoRt     | 40  |

3450

3500

3550

3600



-33

-32

-32

-32

|       |                     |      |
|-------|---------------------|------|
| 0.2   | Deep Resistivity    | 2000 |
| 0.2   | Medium Resistivity  | 2000 |
| 0.2   | Shallow Resistivity | 2000 |
| 15000 | Line Tension        | 0    |

