



Pioneer Energy Services

## Dual Compensated Porosity Log

15-007-24167-00-00

API No.

Company **Charles N. Griffin**  
 Well **Barbara #1**  
 Field **Bloom West**  
 County **Barber** State **Kansas**

Location  
**1365' FSL & 2100' FEL**  
 Sec: **16** Twp: **32S** Rge: **12W**

Permanent Datum Ground Level Elevation **1615**  
 Log Measured From Kelly Bushing **8** Ft. Above Perm. Datum  
 Drilling Measured From Kelly Bushing

Other Services  
**DIL**  
 Elevation  
 K.B. **1623**  
 D.F. **1615**  
 G.L. **1615**

Date	5/5/2014
Run Number	One
Type Log	CNL / CDL
Depth Driller	4900
Depth Logger	4900
Bottom Logged Interval	4879
Top Logged Interval	3500
Type Fluid In Hole	Chemical
Salinity, PPM CL	4300
Density	9.3
Level	Full
Max. Rec. Temp. F	127
Operating Rig Time	3 Hours
Equipment -- Location	91 Hays
Recorded By	D. Schmidt
Witnessed By	Bruce Reed

Borehole Record		Casing Record	
Run No.	Bit From To	Size	Wgt. Wgt.
1	12.25 00	262	8.625 24#
2	7.875 262	4900	

<<< Fold Here >>>

All interpretations are opinions based on inferences from electrical or other measurements and we cannot and do not guarantee the accuracy or correctness of any interpretation, and we shall not, except in the case of gross or willful negligence on our part, be liable or responsible for any loss, costs, damages, or expenses incurred or sustained by anyone resulting from any interpretation made by any of our officers, agents or employees. These interpretations are also subject to our general terms and conditions set out in our current Price Schedule.

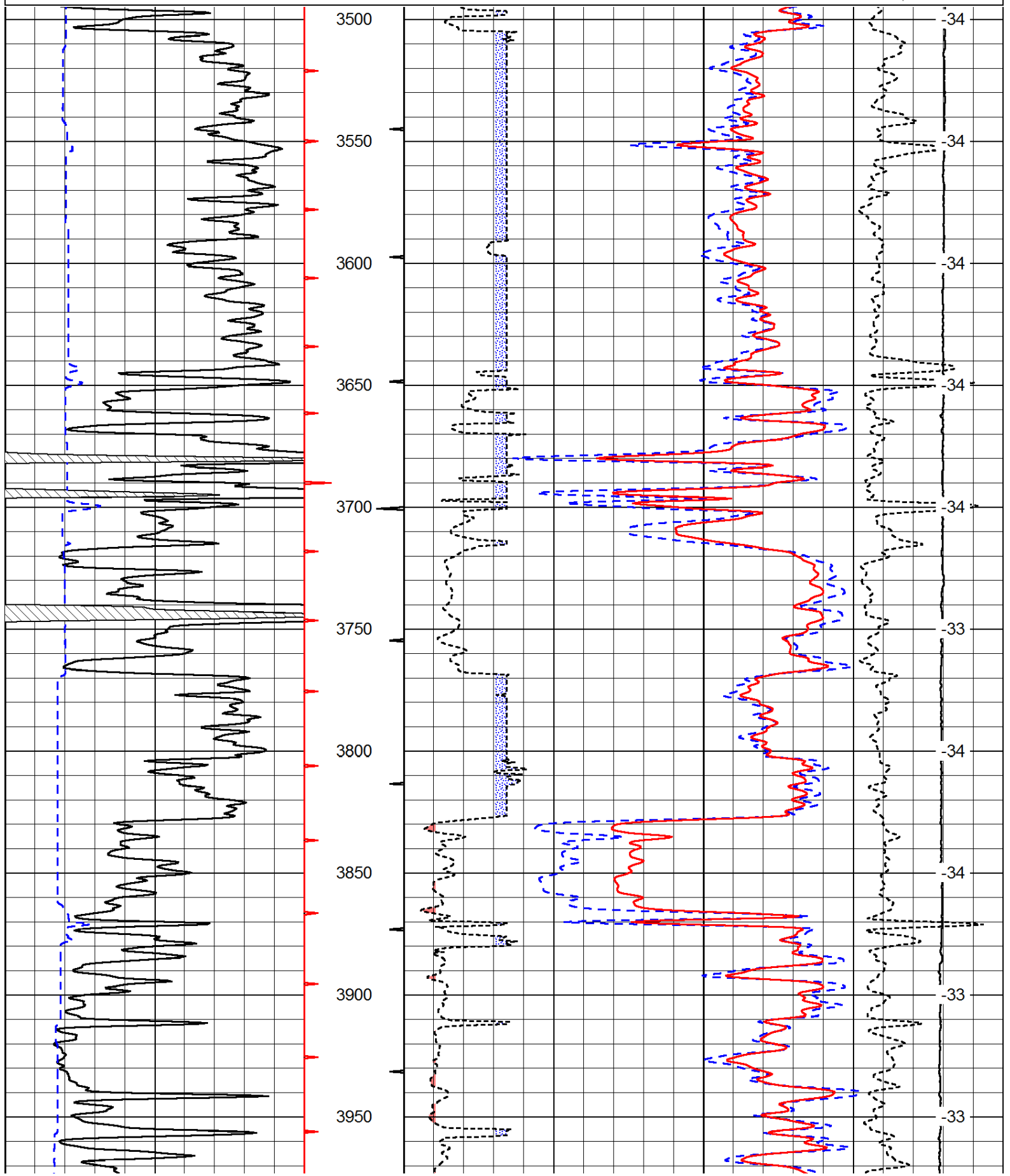
Comments

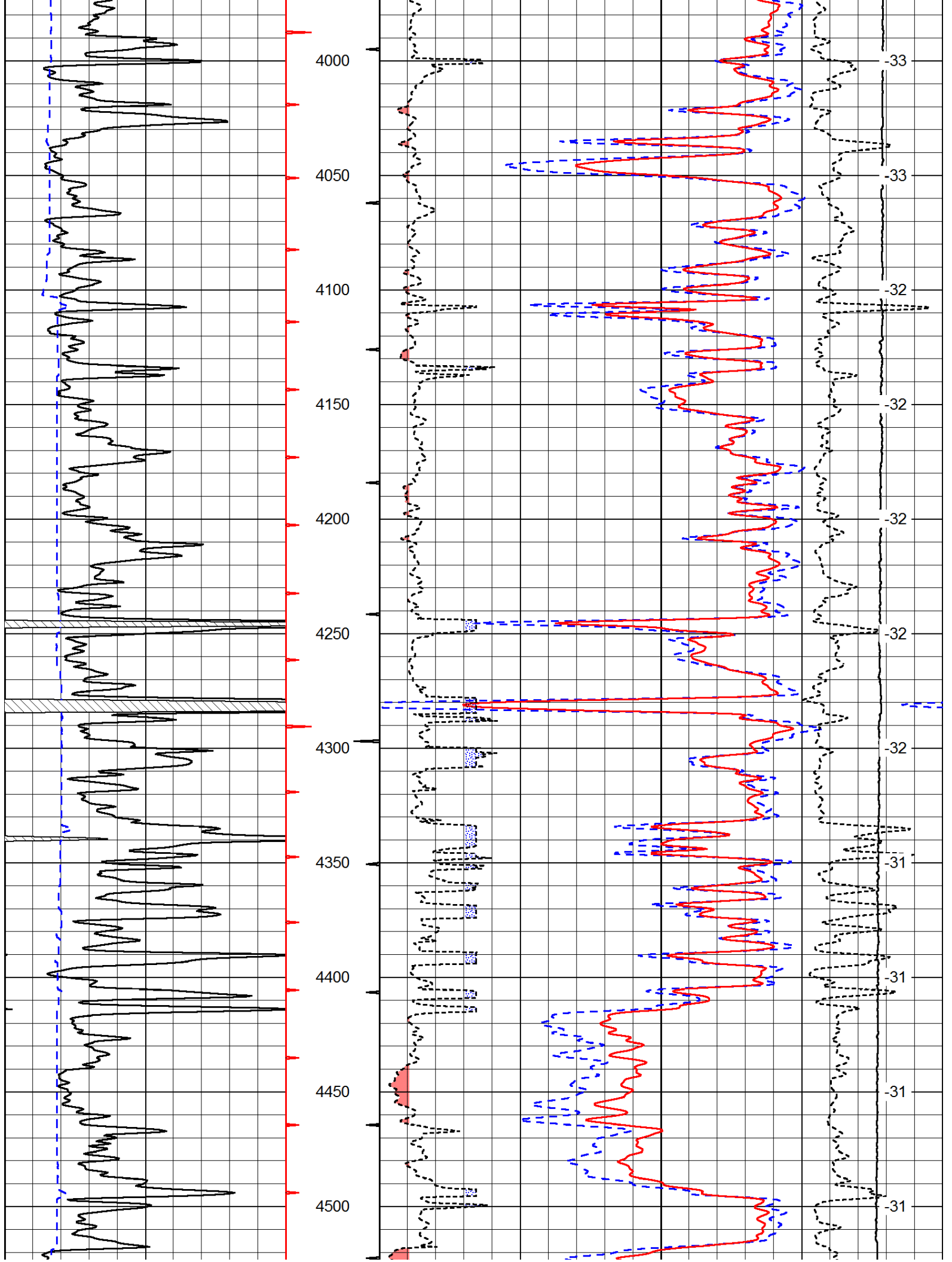
Thank you for using Pioneer Energy Services  
[www.pioneerenergy.com](http://www.pioneerenergy.com)  
 785 625 3858  
 Medicine Lodge,  
 1 West to Woodward Rd, 1 South,  
 Southwest on Red Rock Rd for 1 1/4 mile,  
 West into

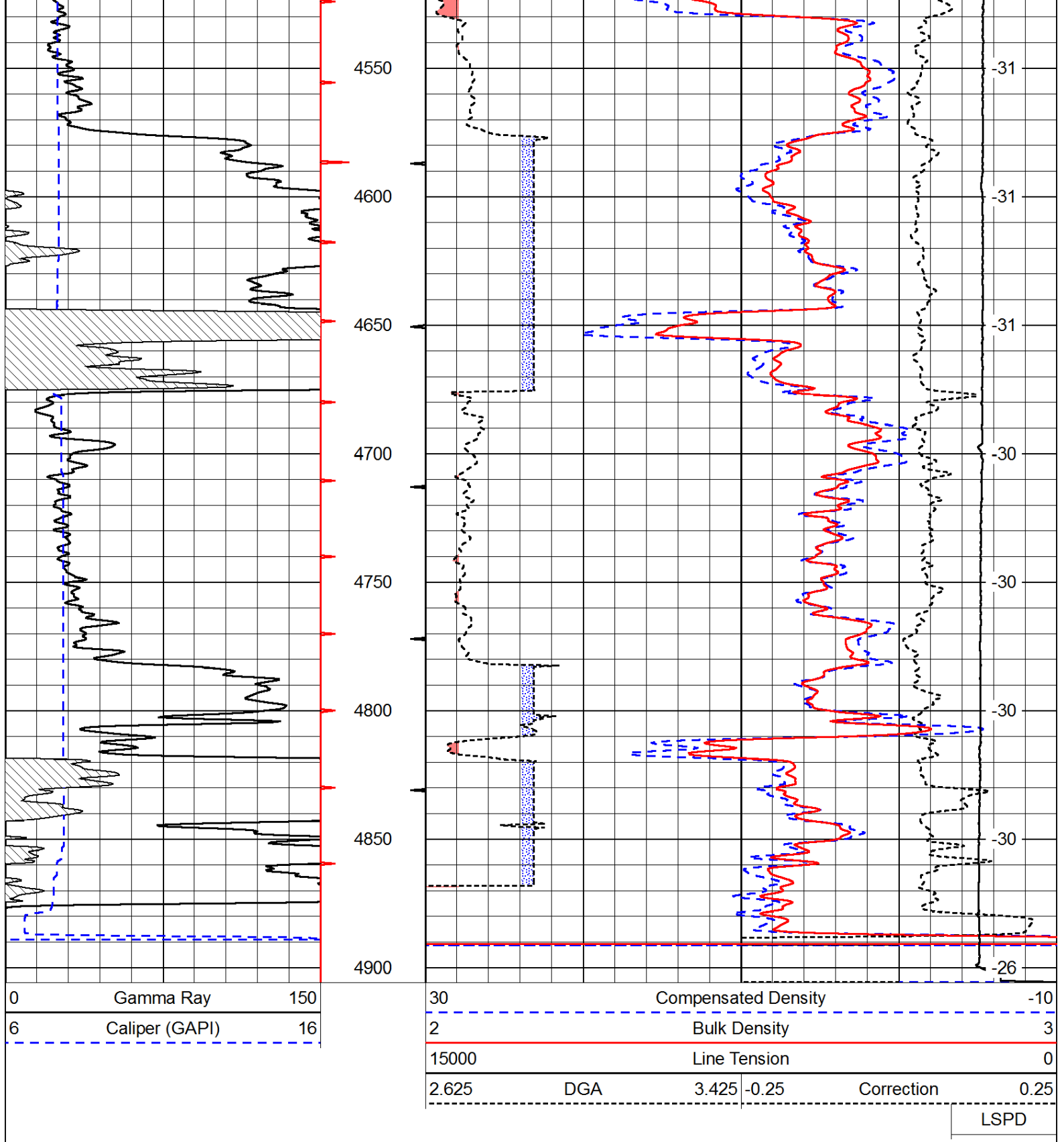
Database File: c:\warrior\data\charles n. griffin\_barbara #1\griffin\_050514hd.db  
 Dataset Pathname: dil/grstack  
 Presentation Format: cdl  
 Dataset Creation: Mon May 05 05:02:48 2014  
 Charted by: Depth in Feet scaled 1:600

0	Gamma Ray	150
6	Caliper (GAPI)	16

30	Compensated Density		-10
2	Bulk Density		3
15000	Line Tension		0
2.625	DGA	3.425	-0.25
			Correction
			0.25
LSPD			







Database File: c:\warrior\data\charles n. griffin\_barbara #1\griffin\_050514hd.db  
 Dataset Pathname: dil/grstack  
 Presentation Format: cndlspec  
 Dataset Creation: Mon May 05 05:02:48 2014  
 Charted by: Depth in Feet scaled 1:240

