



Pioneer Energy Services

Dual Induction Log

15-007-24167-00-00

API No.

Company **Charles N. Griffin**

Well **Barbara #1**

Field **Bloom West**

County **Barber** State

Kansas

Location **1365' FSL & 2100' FEL**

Other Services
CNL/CDL

Sec: **16** Twp: **32S** Rge: **12W**

Permanent Datum **Ground Level** Elevation **1615**

Log Measured From **Kelly Bushing** **8** Ft. Above Perm. Datum

Elevation
K.B. 1623
D.F. 1615
G.L. 1615

Date **5/5/2014**

Run Number **One**

Depth Driller **4900**

Depth Logger **4900**

Bottom Logged Interval **4899**

Top Log Interval **250**

Casing Driller **8.625 @ 262**

Casing Logger **262**

Bit Size **7.875**

Type Fluid in Hole **Chemical**

Salinity,ppm CL **4300**

Density / Viscosity **9.3 48**

pH / Fluid Loss **10.0 7.8**

Source of Sample **Flowline**

Rm @ Meas. Temp **0.50 @ 74**

Rmf @ Meas. Temp **0.34 @ 74**

Rmc @ Meas. Temp **0.68 @ 74**

Source of Rmf / Rmc **Charts**

Rm @ BHT **0.29 @ 127**

Operating Rig Time **3 Hours**

Max Rec. Temp. F **127**

Equipment Number **91**

Location **Hays**

Recorded By **D. Schmidt**

Witnessed By **Bruce Reed**

<<< Fold Here >>>

All interpretations are opinions based on inferences from electrical or other measurements and we cannot and do not guarantee the accuracy or correctness of any interpretation, and we shall not, except in the case of gross or willful negligence on our part, be liable or responsible for any loss, costs, damages, or expenses incurred or sustained by anyone resulting from any interpretation made by any of our officers, agents or employees. These interpretations are also subject to our general terms and conditions set out in our current Price Schedule.

Comments

Thank you for using Pioneer Energy Services
www.pioneerenergy.com
 785 625 3858
 Medicine Lodge,
 1 West to Woodward Rd, 1 South,
 Southwest on Red Rock Rd for 1 1/4 mile,
 West into

Database File: c:\warrior\data\charles n. griffin_barbara #1\griffin_050514hd.db
 Dataset Pathname: dil/grstack
 Presentation Format: dil2in
 Dataset Creation: Mon May 05 05:02:48 2014
 Charted by: Depth in Feet scaled 1:600

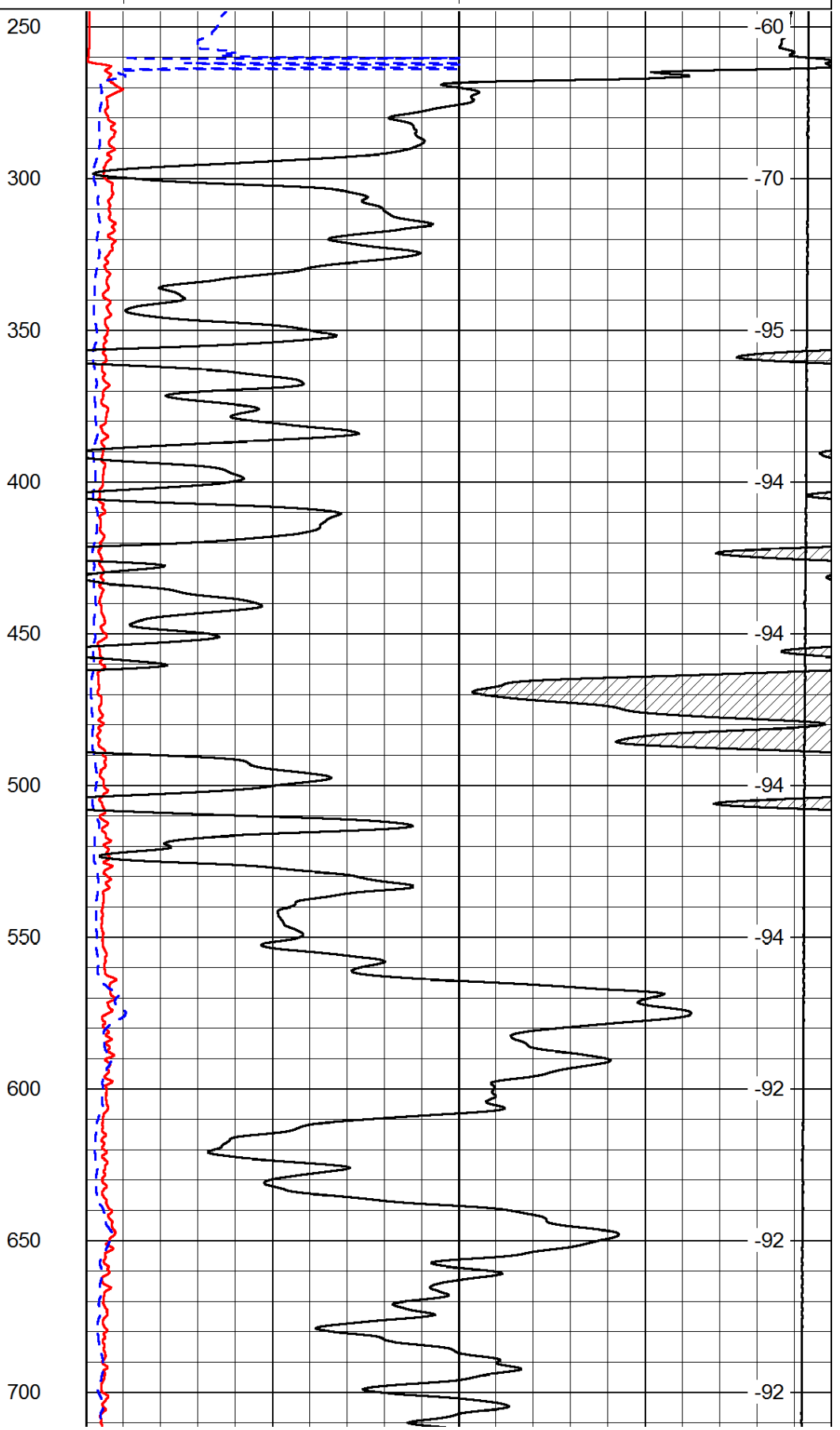
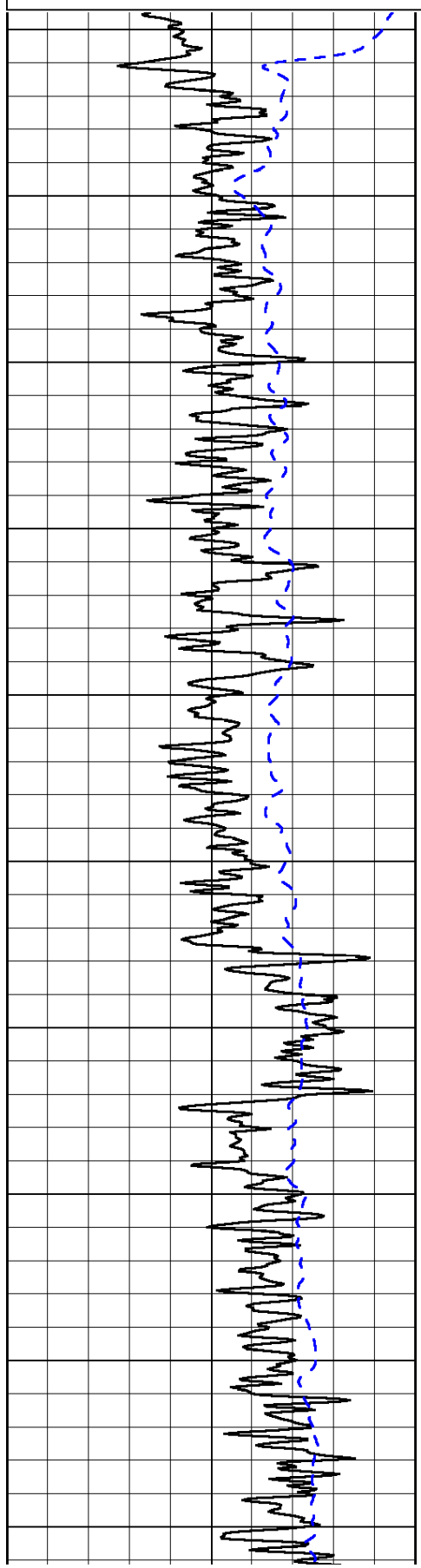
0	Gamma Ray	150
-200	SP (mV)	0

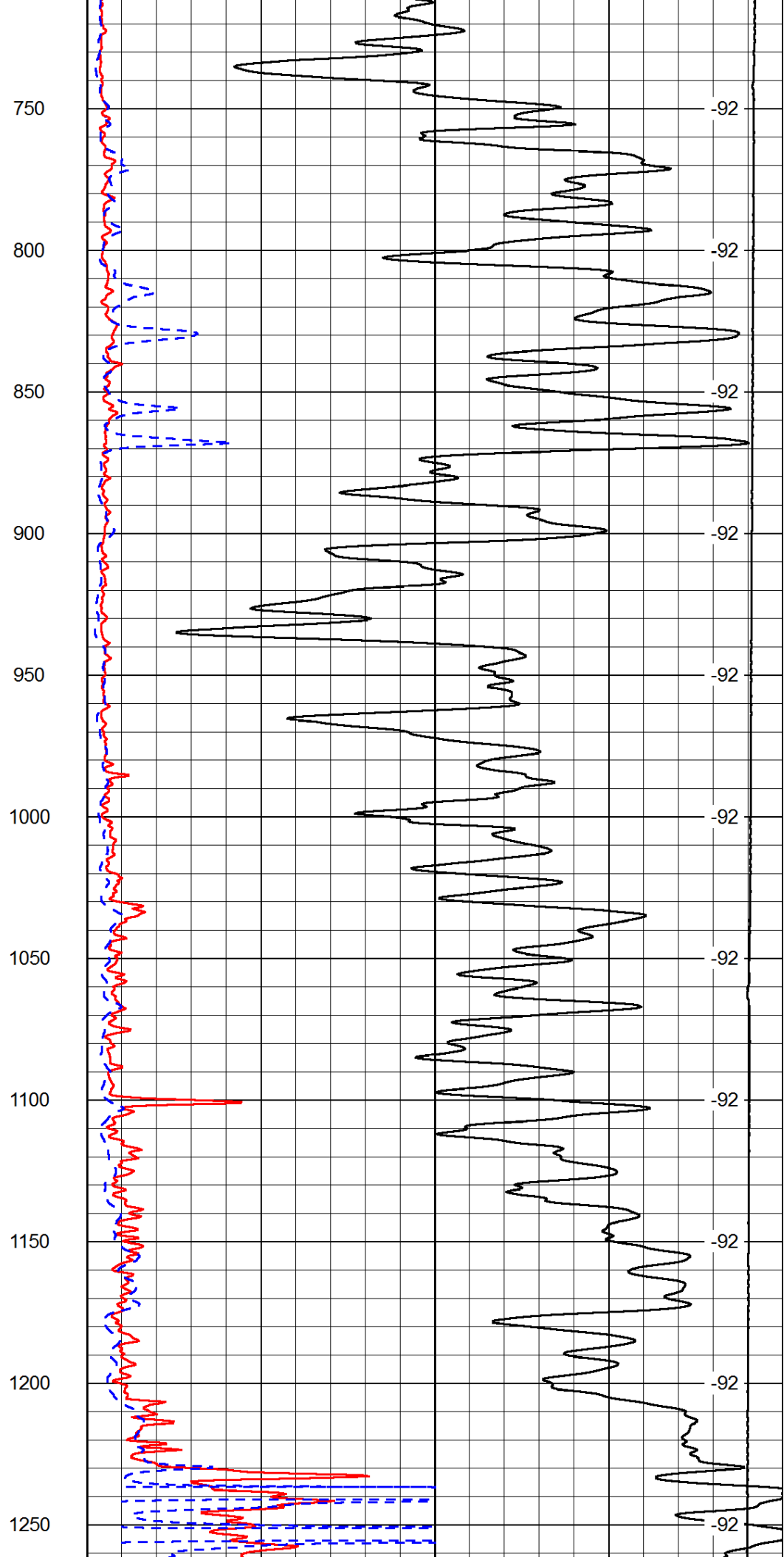
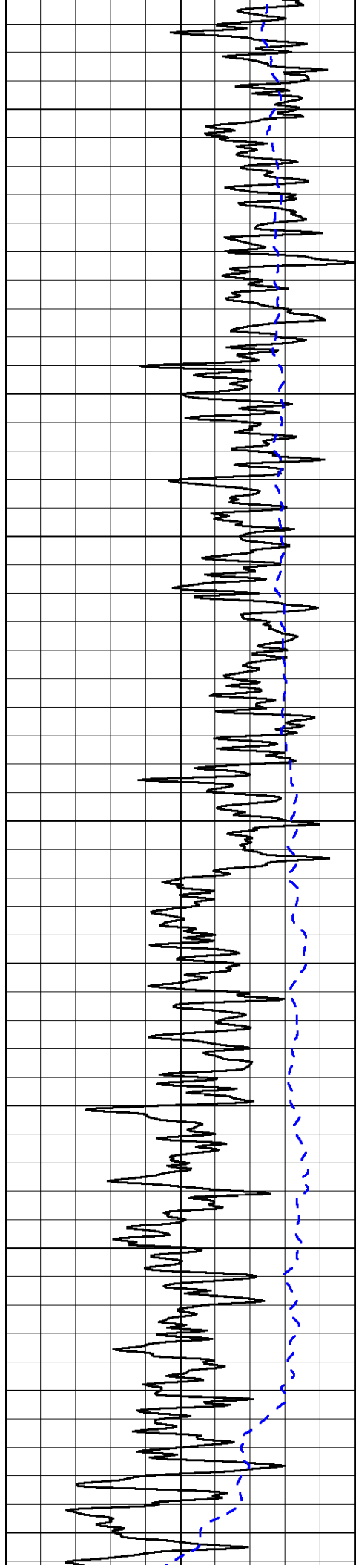
0	Shallow Resistivity	50
0	Deep Resistivity	50

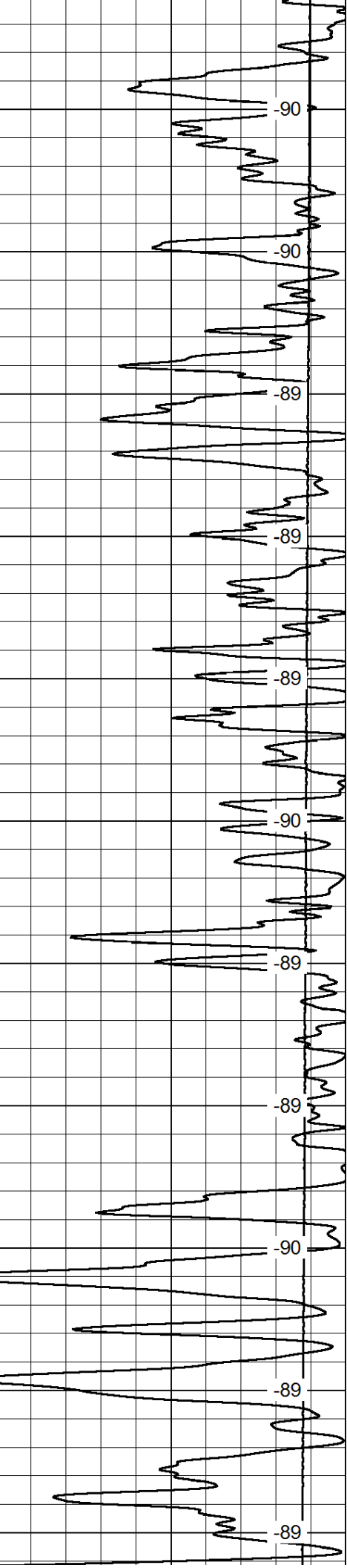
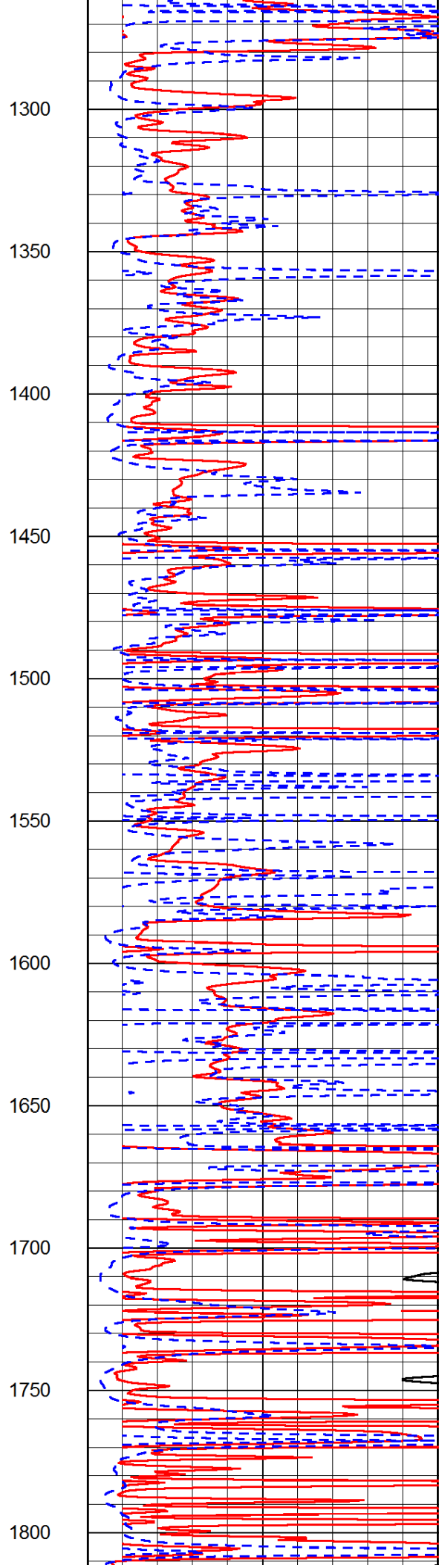
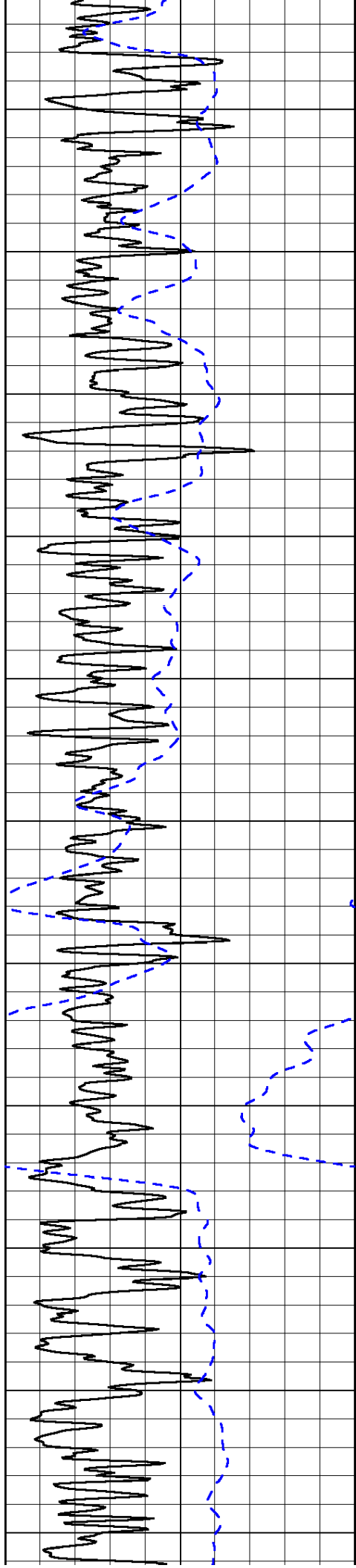
LSPD

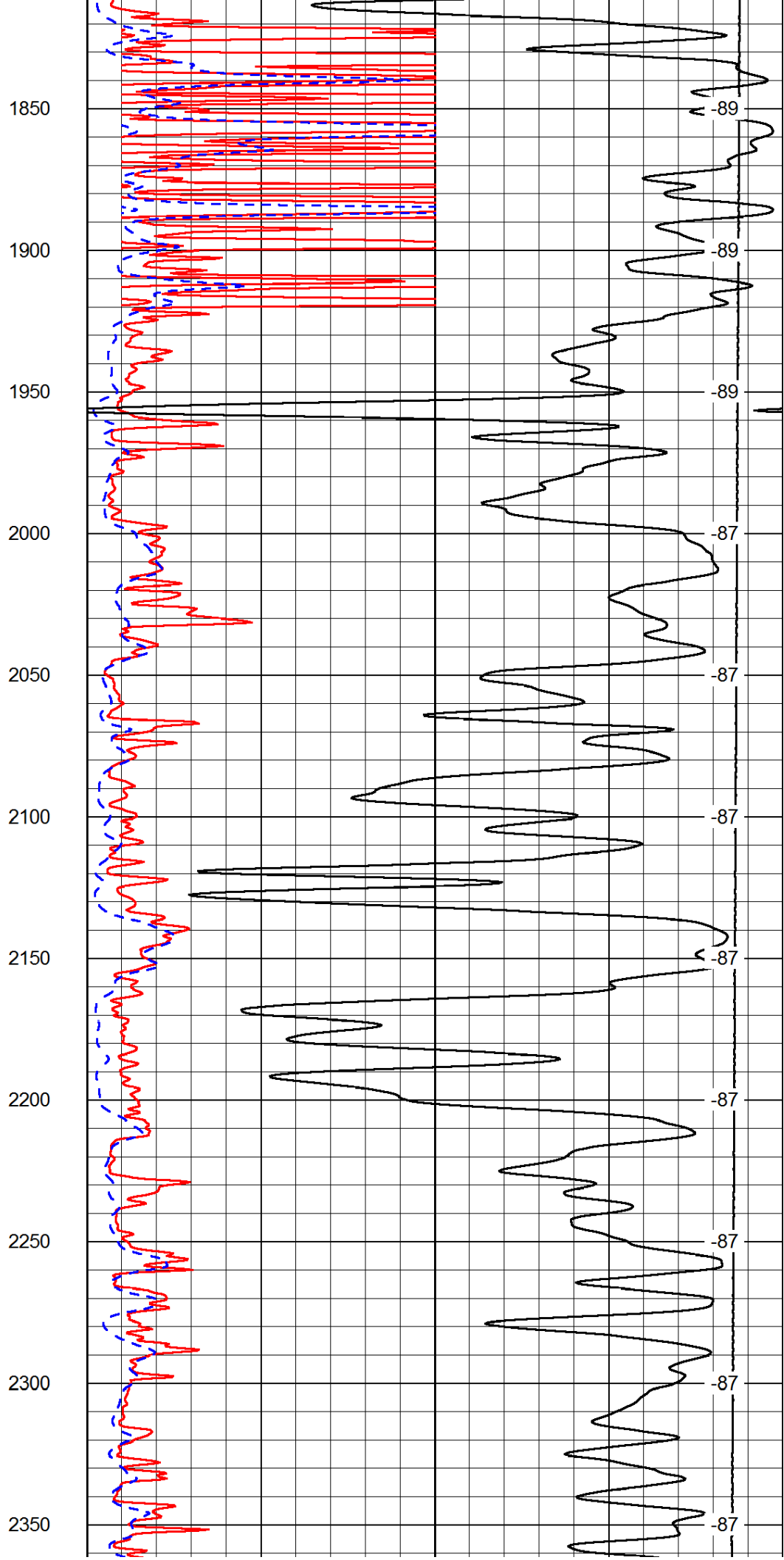
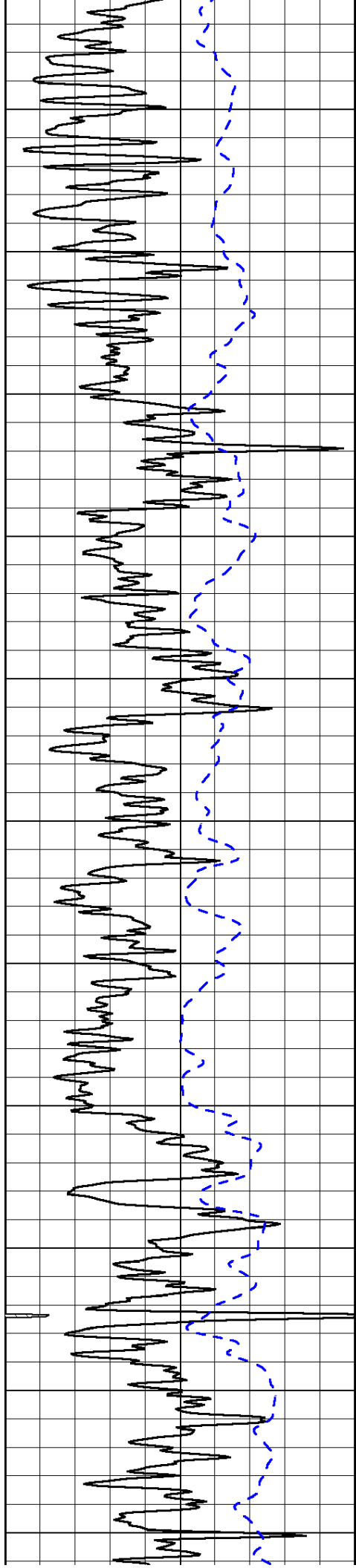
1000	Conductivity	0
15000	Line Tension	0

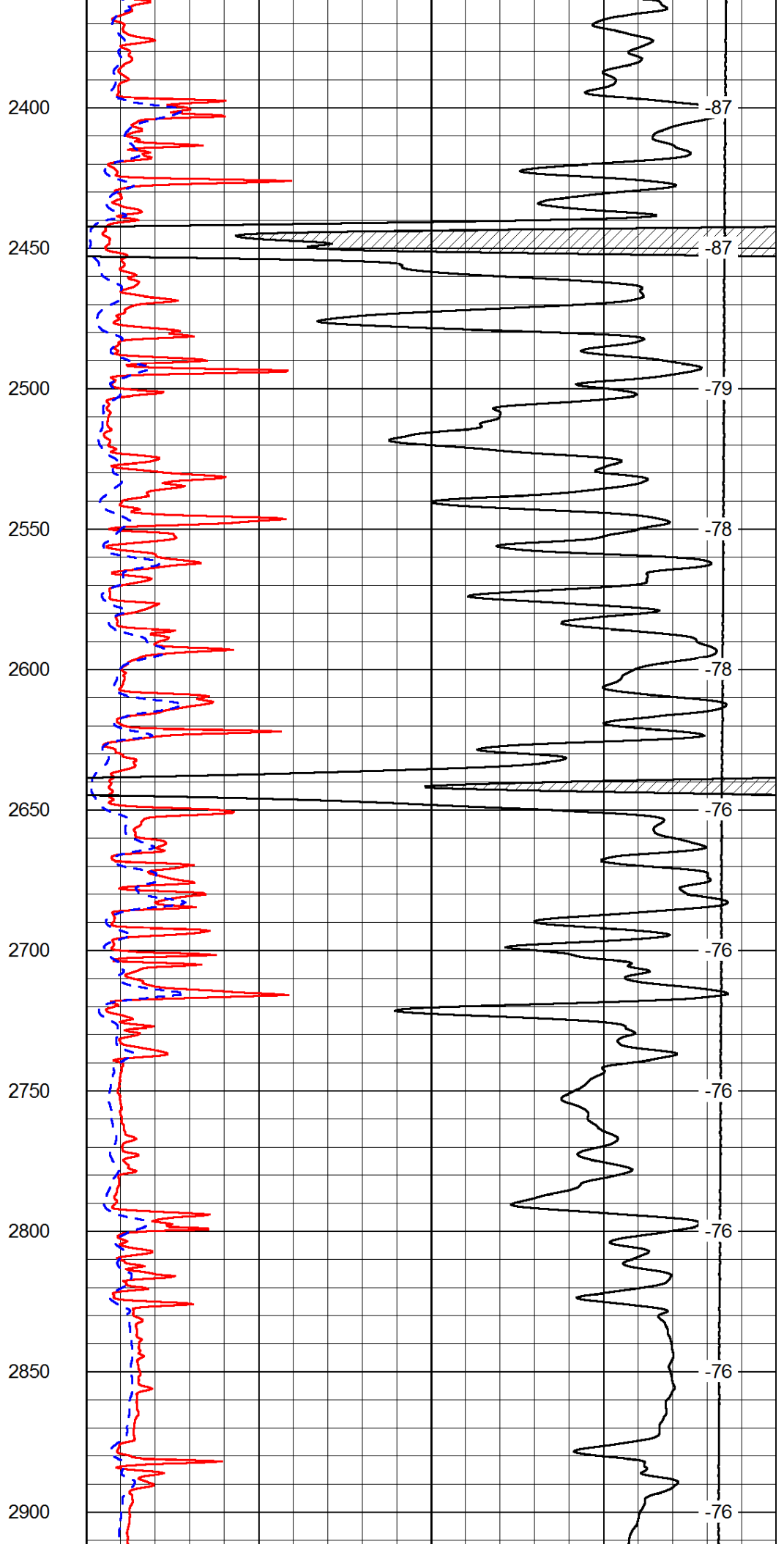
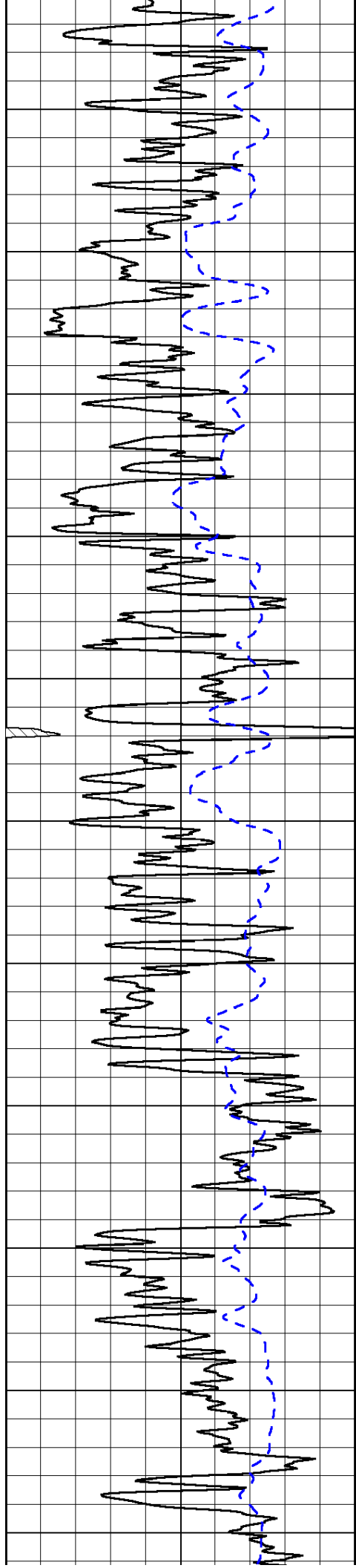
50	Shallow Resistivity	500
50	Deep Resistivity	500

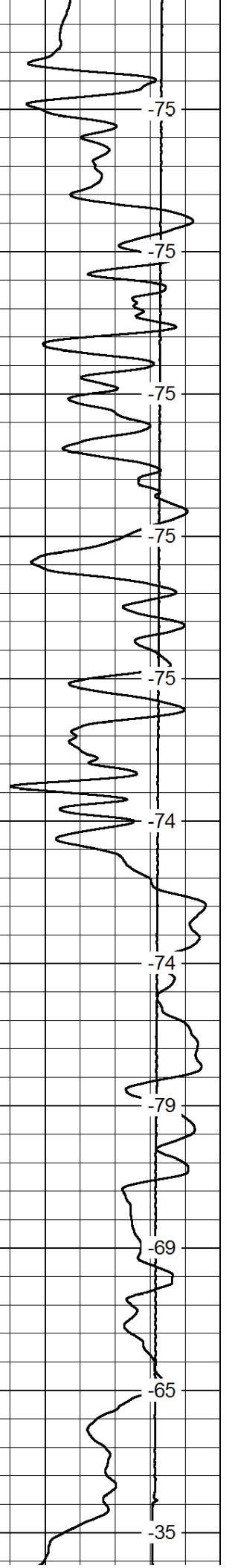
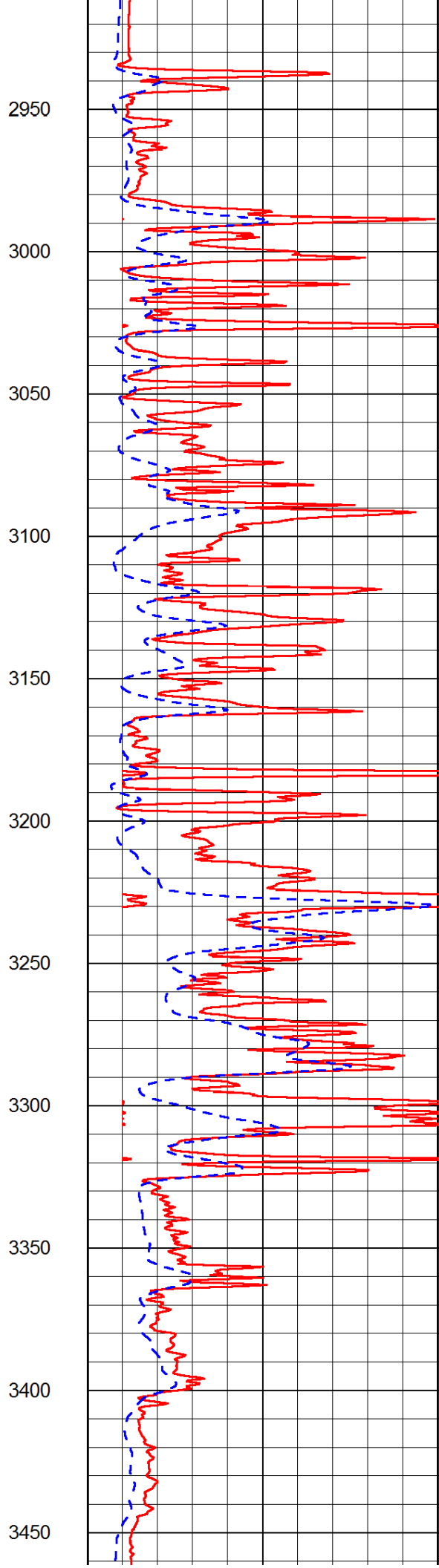
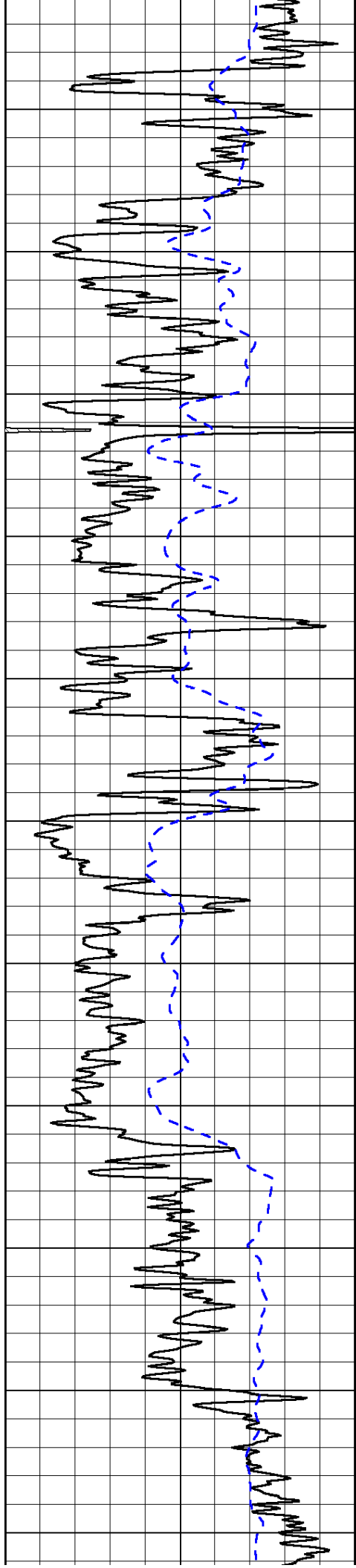


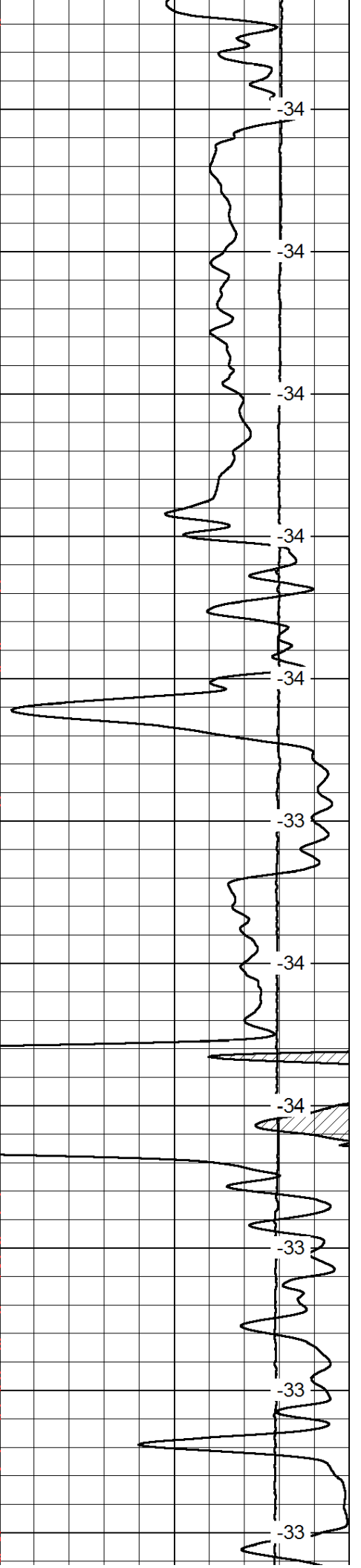
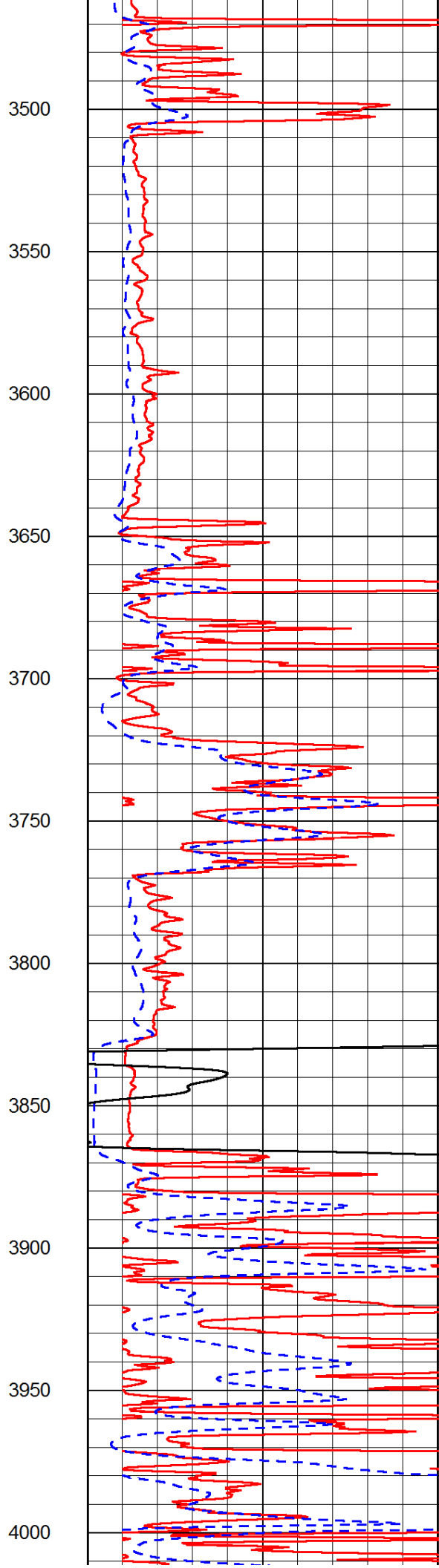
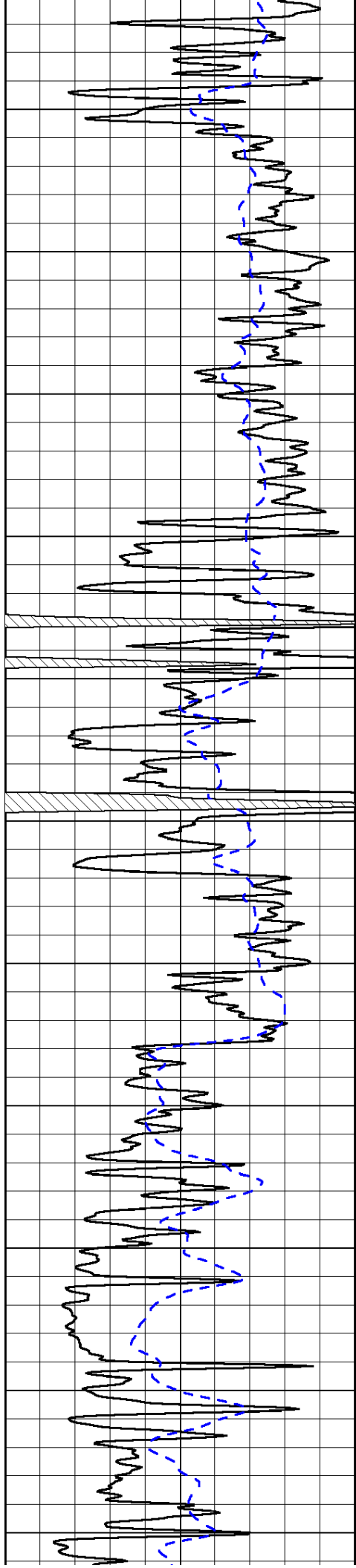


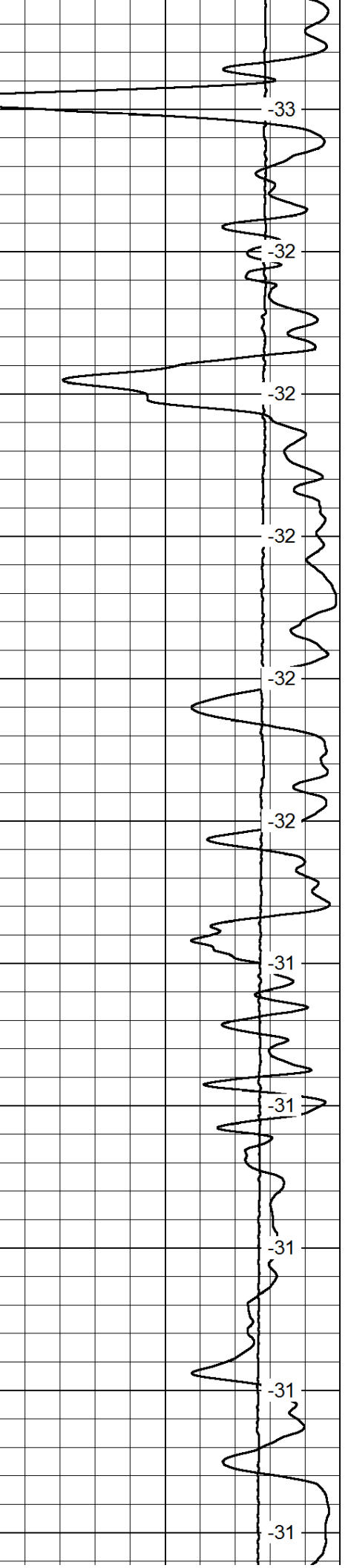
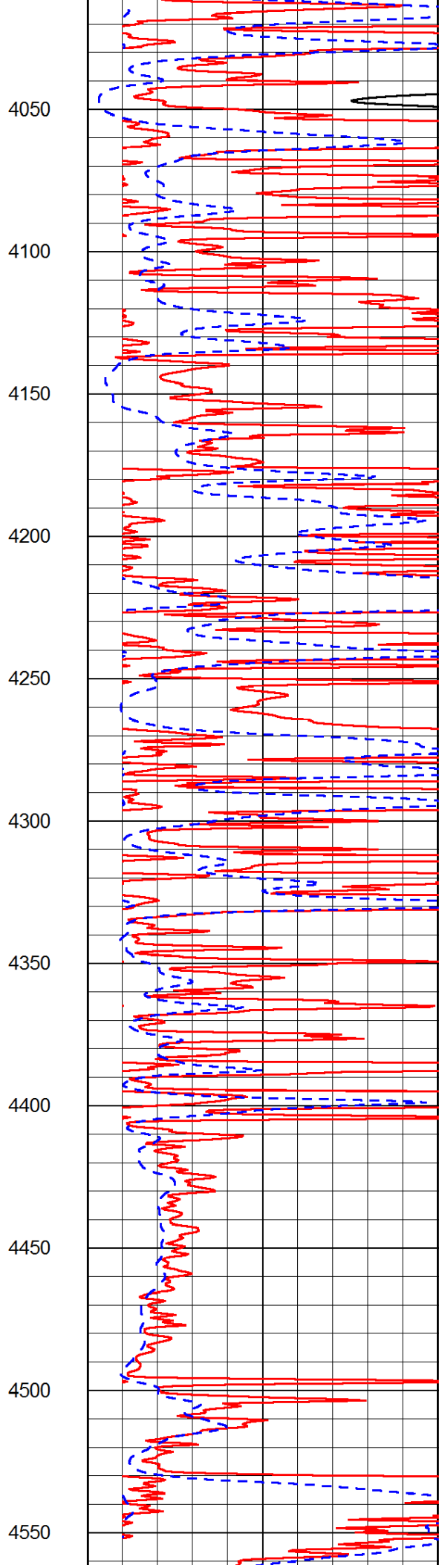
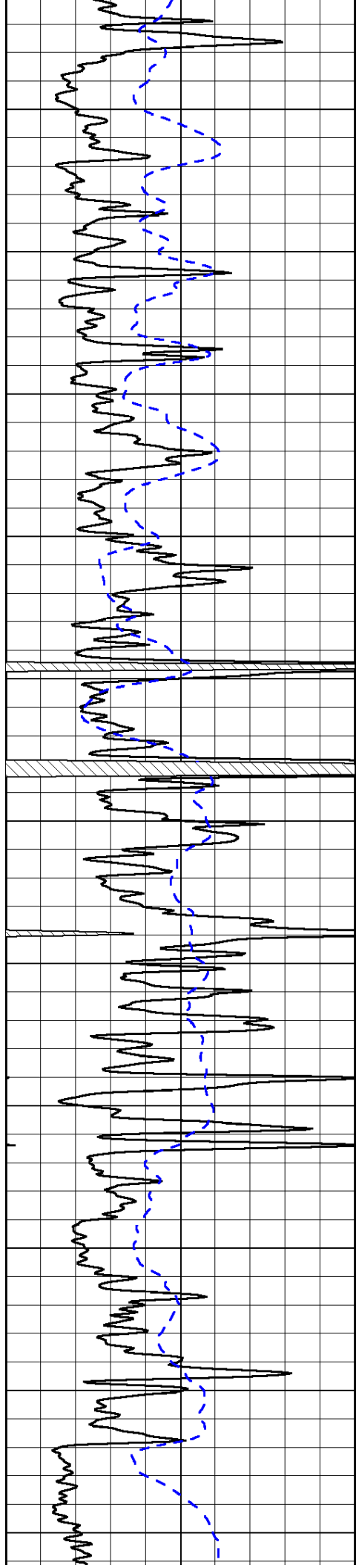


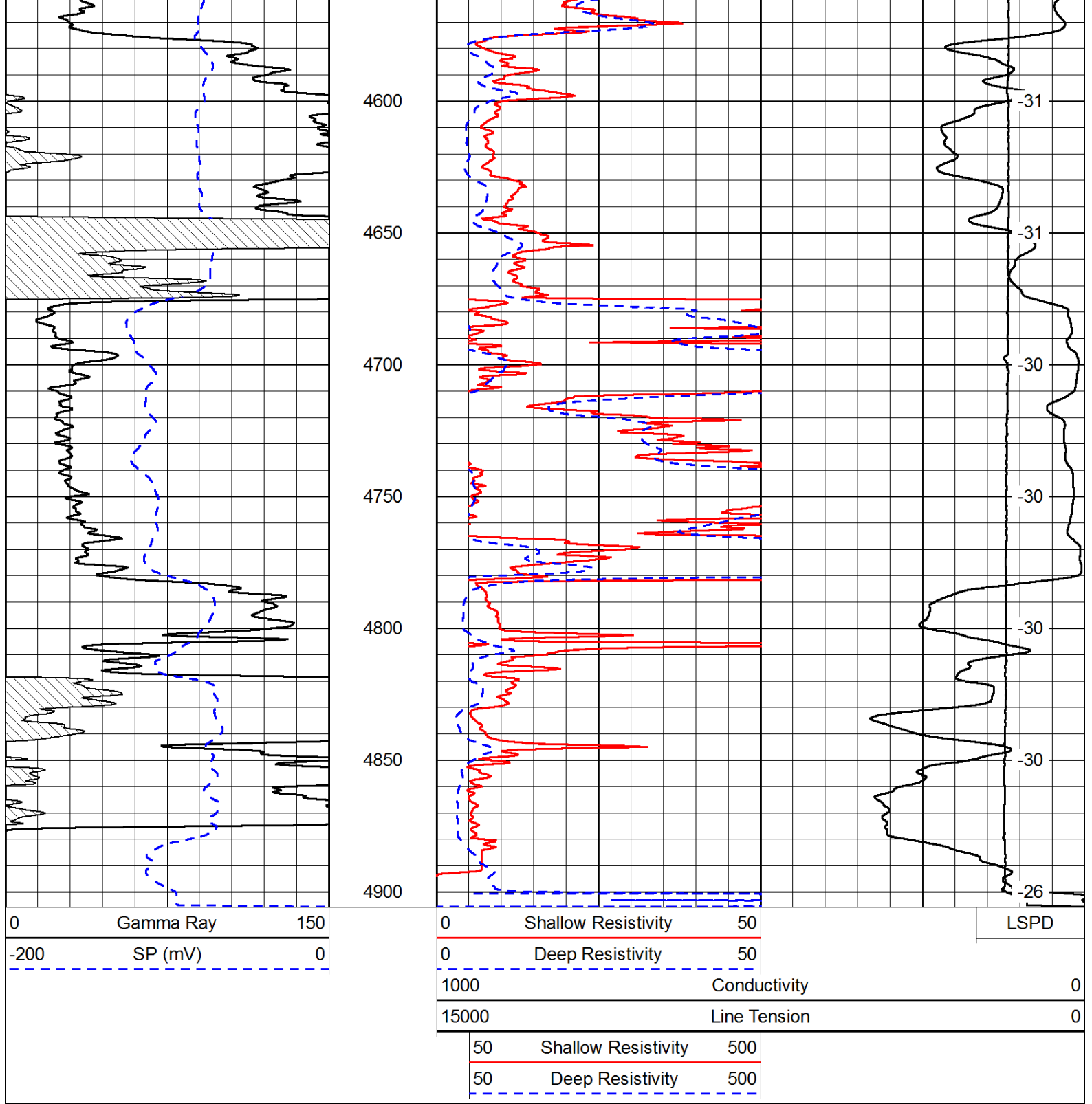




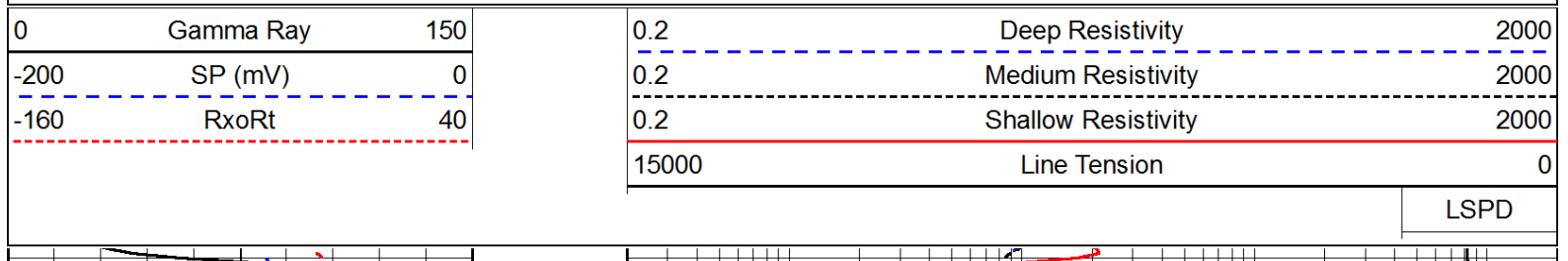


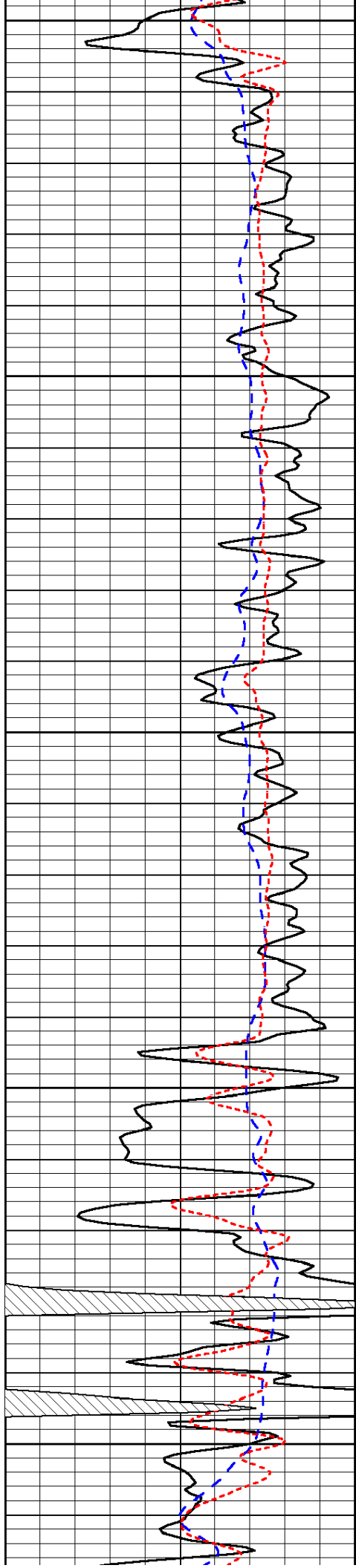






Database File: c:\warrior\data\charles n. griffin_barbara #1\griffin_050514hd.db
 Dataset Pathname: dil/grstack
 Presentation Format: dil
 Dataset Creation: Mon May 05 05:02:48 2014
 Charted by: Depth in Feet scaled 1:240





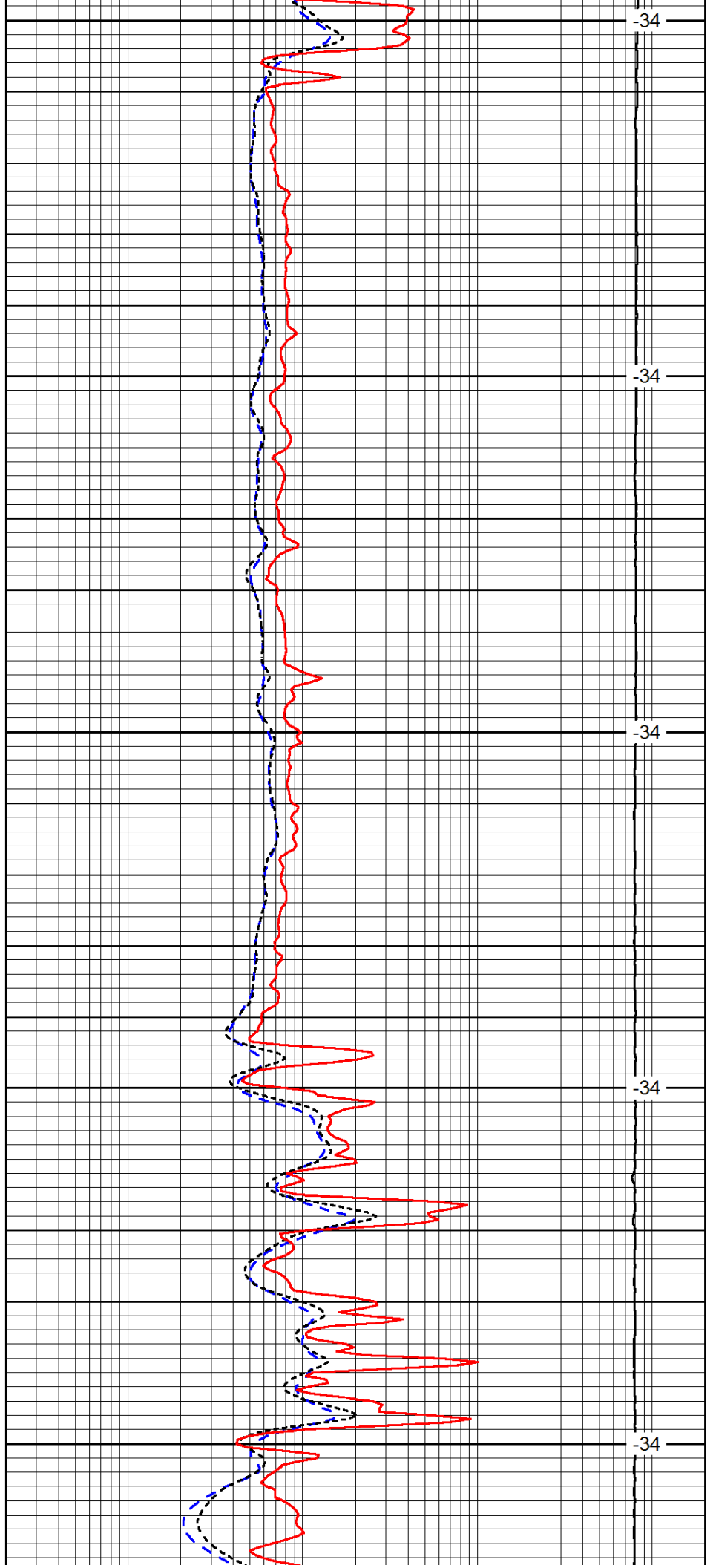
3500

3550

3600

3650

3700



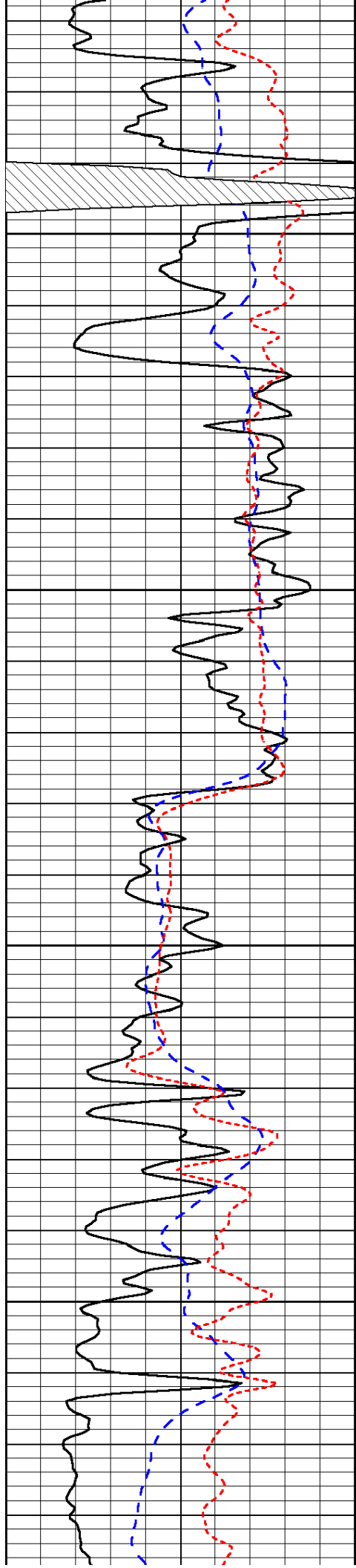
-34

-34

-34

-34

-34

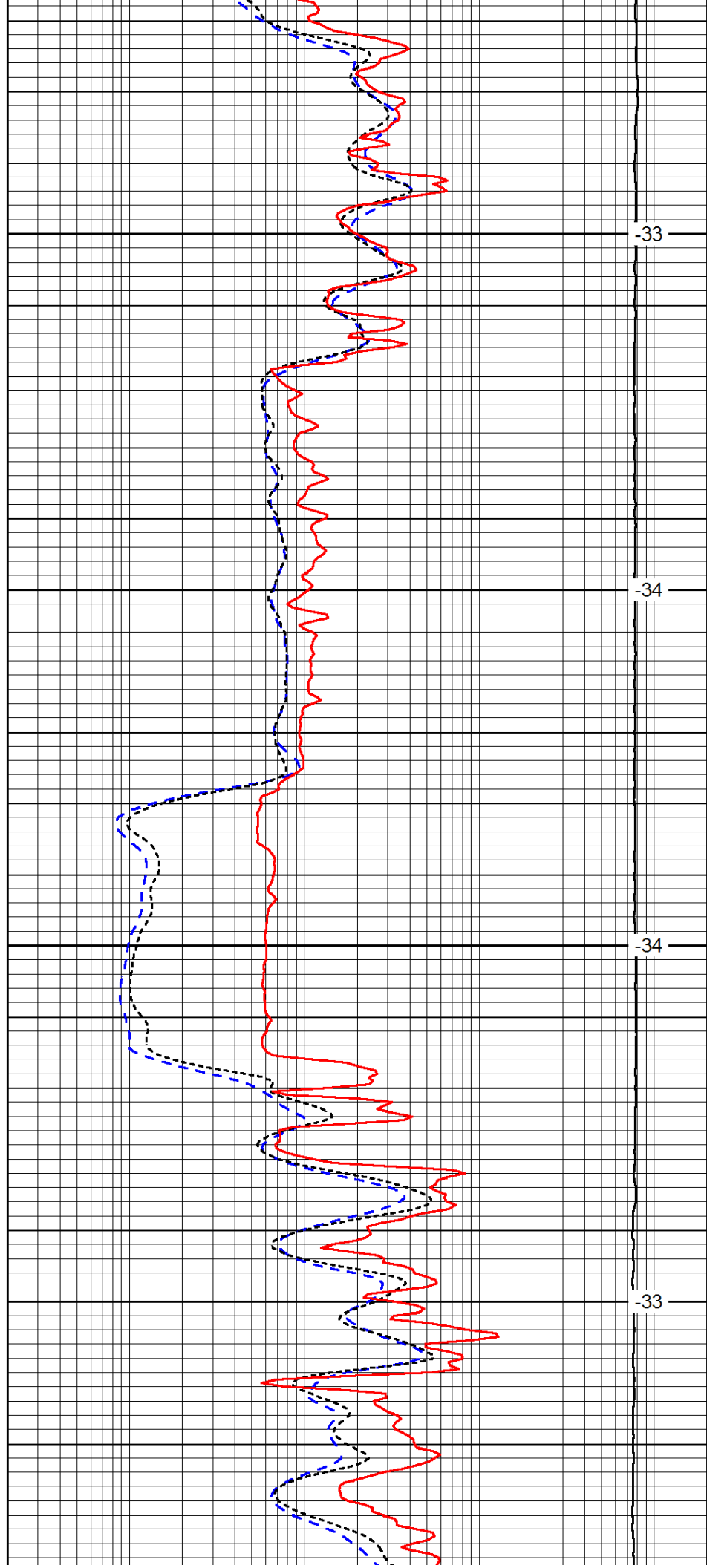


3750

3800

3850

3900

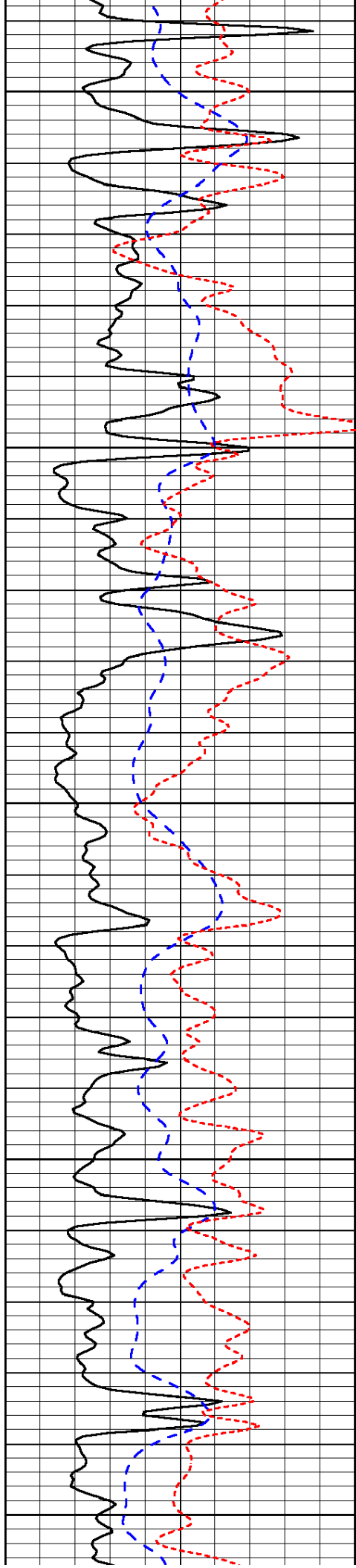


-33

-34

-34

-33



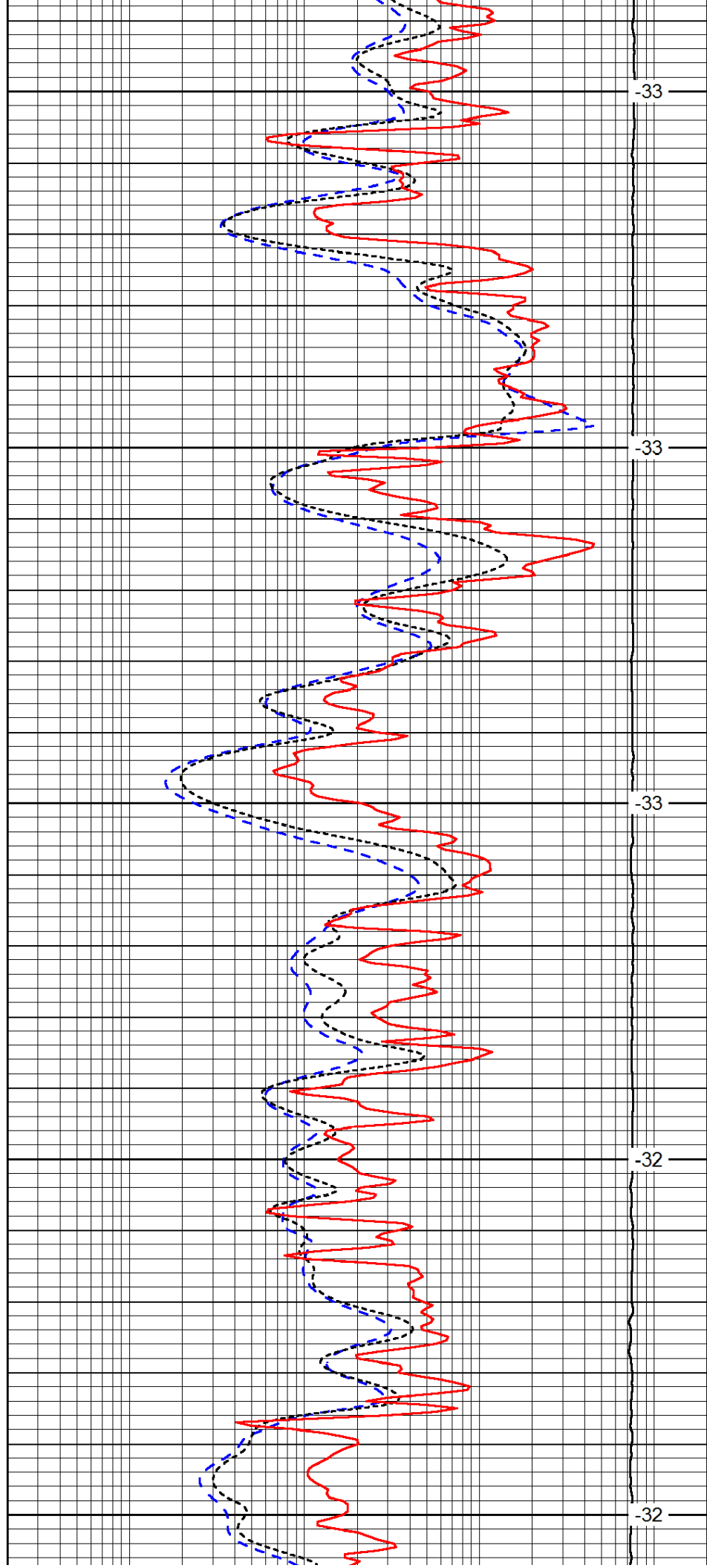
3950

4000

4050

4100

4150



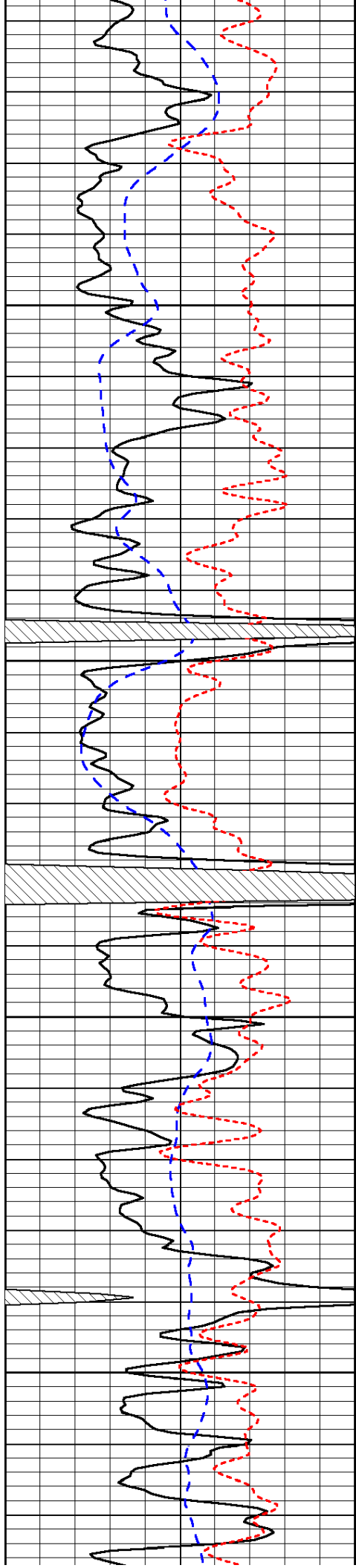
-33

-33

-33

-32

-32

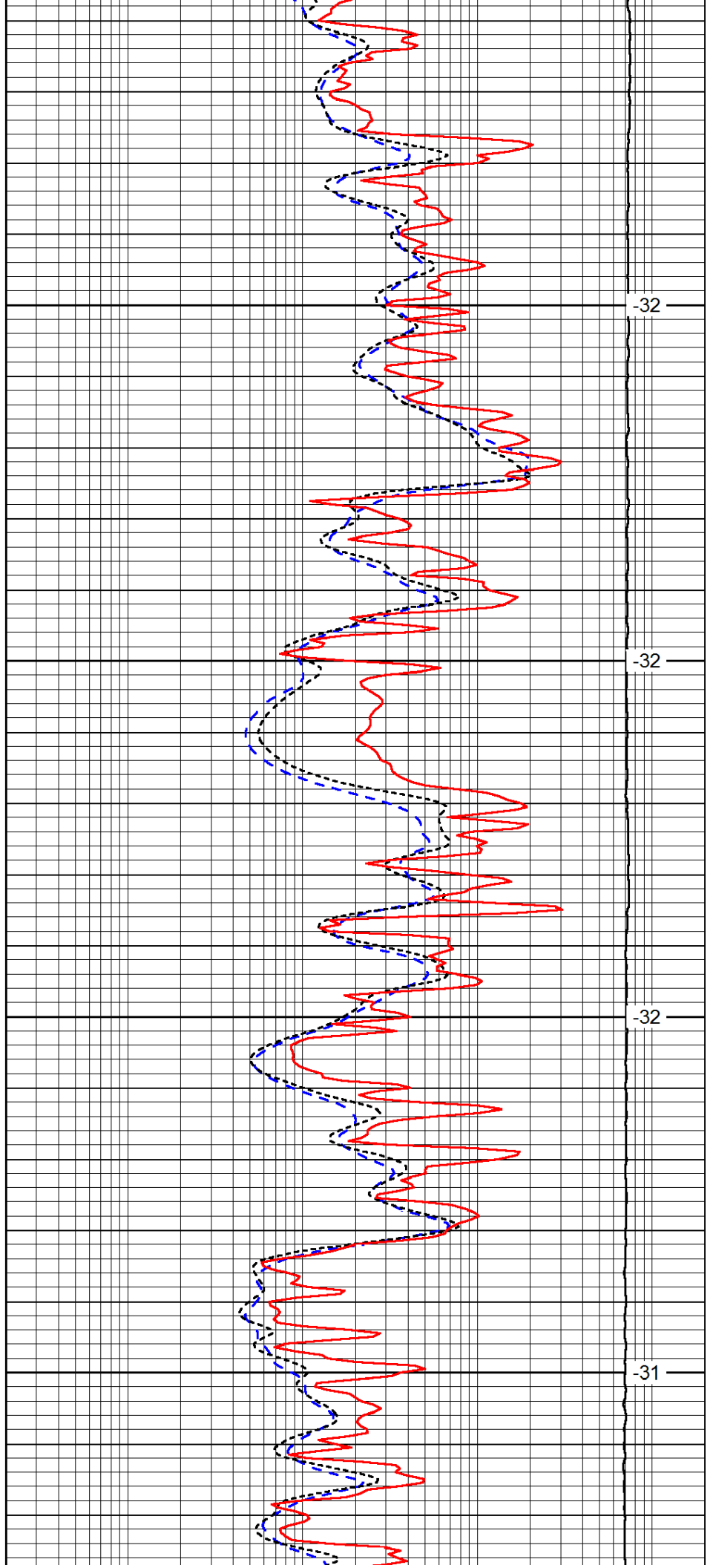


4200

4250

4300

4350

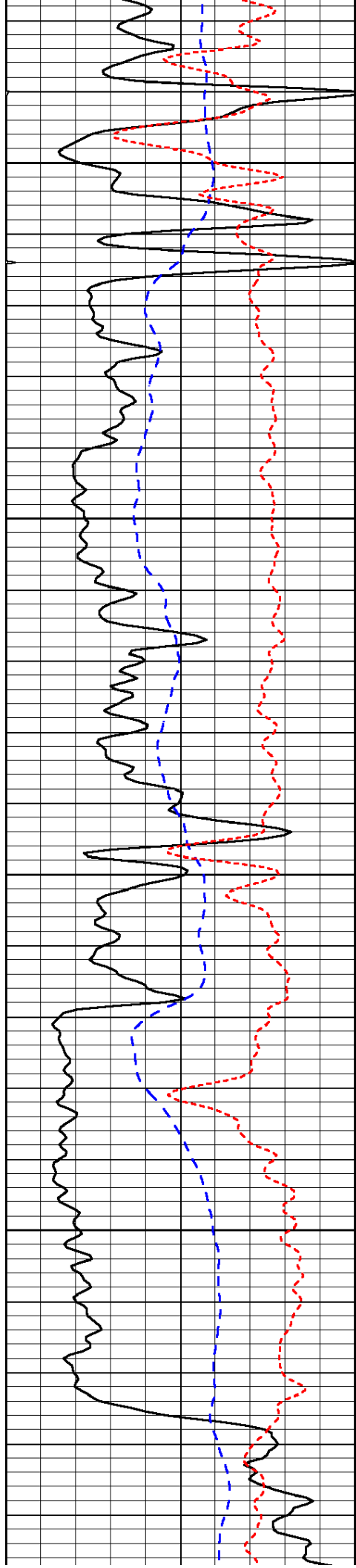


-32

-32

-32

-31

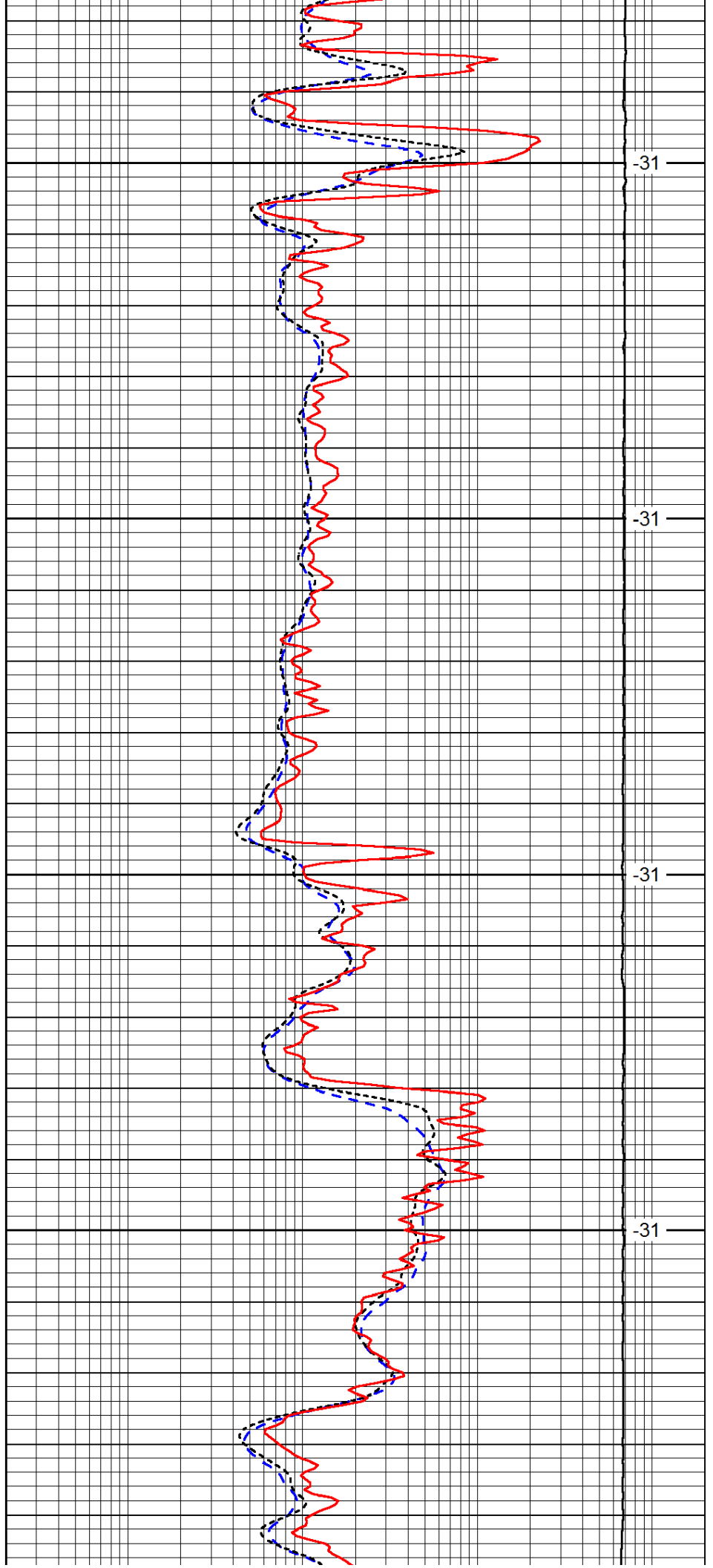


4400

4450

4500

4550

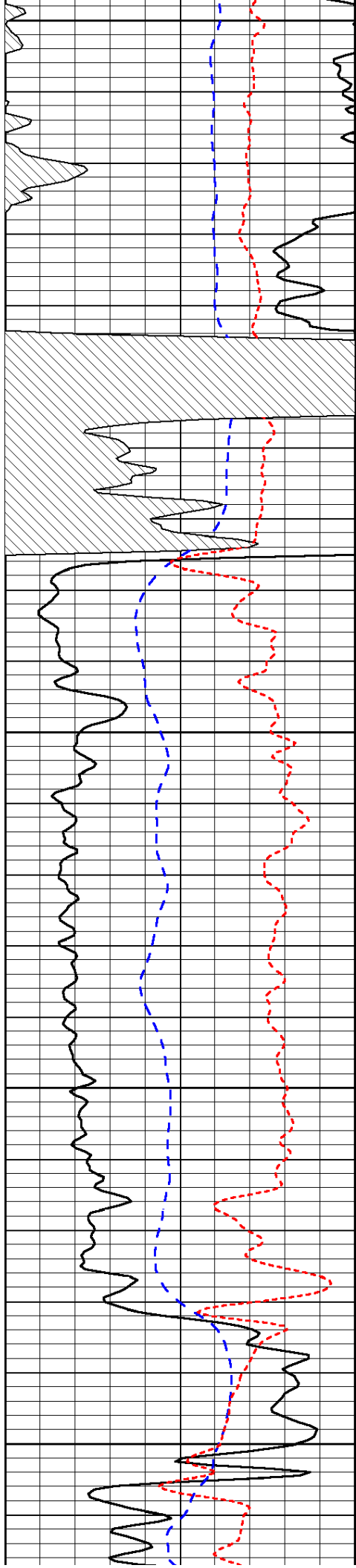


-31

-31

-31

-31



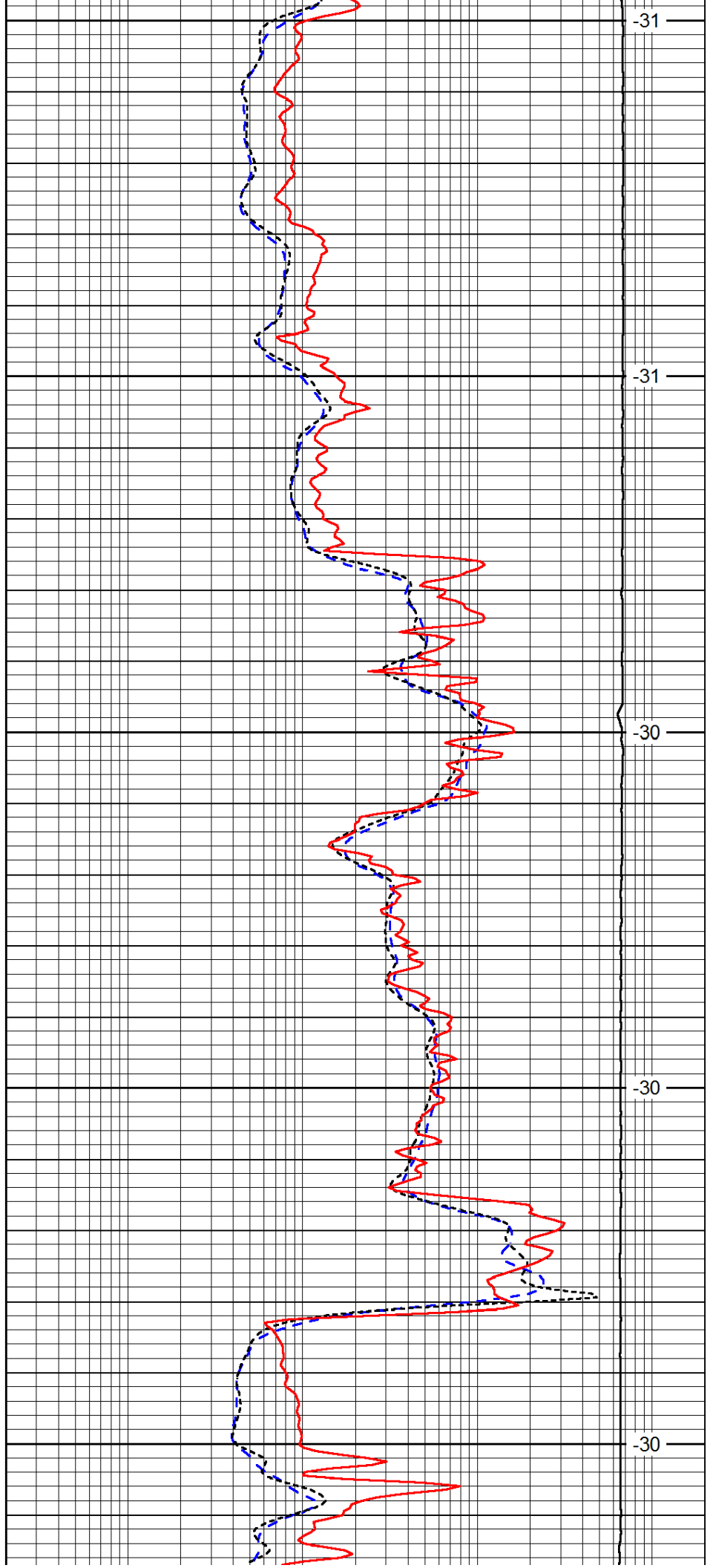
4600

4650

4700

4750

4800



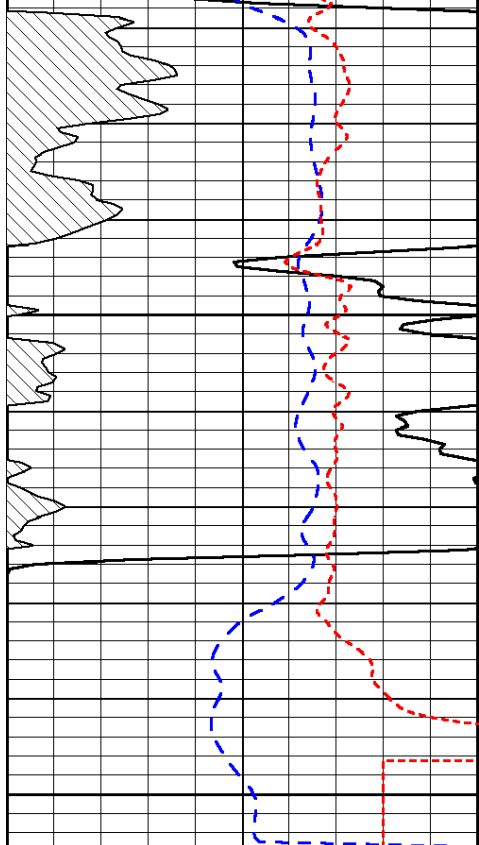
-31

-31

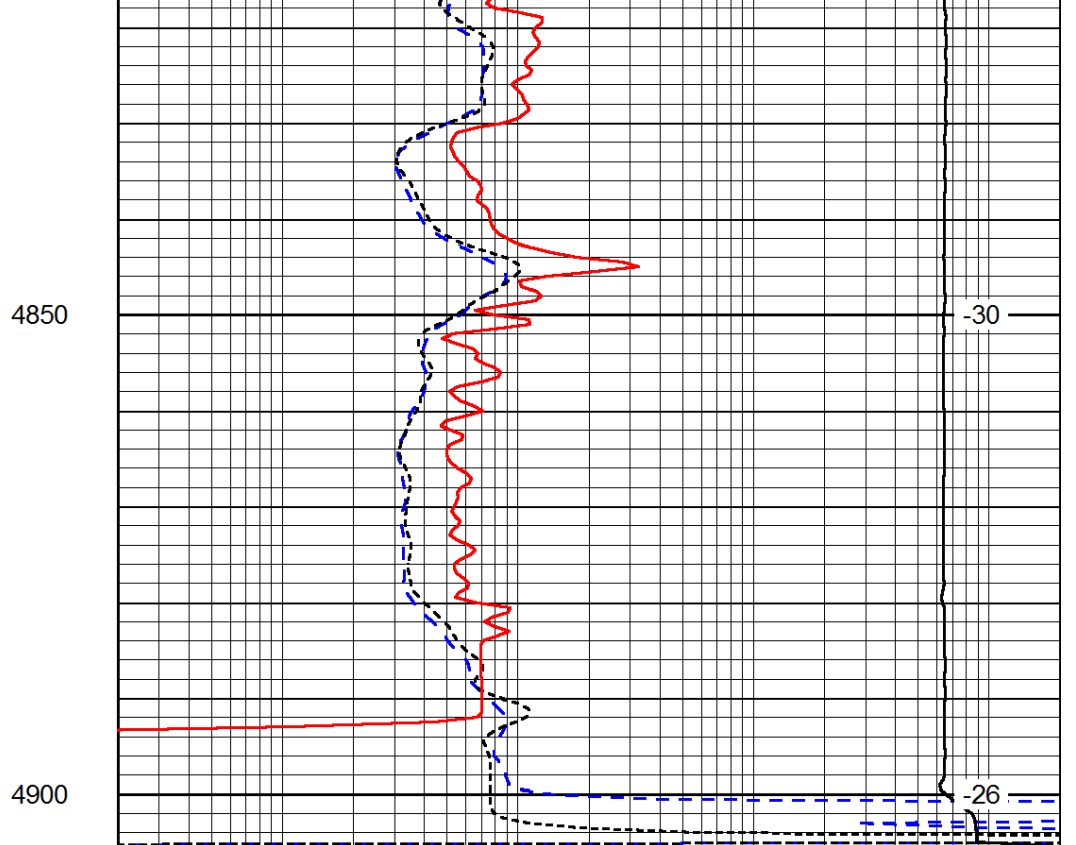
-30

-30

-30



0	Gamma Ray	150
-200	SP (mV)	0
-160	RxoRt	40



0.2	Deep Resistivity	2000
0.2	Medium Resistivity	2000
0.2	Shallow Resistivity	2000
15000	Line Tension	0

LSPD