



**COMPLETION
& PRODUCTION
SERVICES CO.**

**MICRO
LOG**

Company CASTELLI EXPLORATION, INC.
Well GREGG "A" #1-19
Field SHIMER
County COMANCHE
State KANSAS

Company CASTELLI EXPLORATION, INC.
Well GREGG "A" #1-19
Field SHIMER
County COMANCHE State KANSAS

Location: API # : 15-033-21742-0000
1980' FSL & 2130' FEL
E/2 - W/2 - NW - SE
SEC 19 TWP 33S RGE 16W
Permanent Datum GROUND LEVEL Elevation 1841
Log Measured From KELLY BUSHING 13' A.G.L.
Drilling Measured From KELLY BUSHING
Other Services
CDL/CNL/PE
DIL
Elevation
K.B. 1854
D.F. 1852
G.L. 1841

Date	1/24/14
Run Number	TWO
Depth Driller	5750
Depth Logger	5754
Bottom Logged Interval	5752
Top Log Interval	3900
Casing Driller	13 3/8" @ 314'
Casing Logger	314
Bit Size	7 7/8"
Type Fluid in Hole	CHEMICAL MUD
Density / Viscosity	9.5/52
pH / Fluid Loss	11.0/8.8
Source of Sample	FLOWLINE
Rim @ Meas. Temp	.950 @ .65F
Rmf @ Meas. Temp	.713 @ .65F
Rmc @ Meas. Temp	1.14 @ .65F
Source of Rmf / Rmc	MEASUREMENT
Rim @ BHT	.468 @ 132F
Time Circulation Stopped	5.5 HOURS
Time Logger on Bottom	5:15 A.M.
Maximum Recorded Temperature	132F
Equipment Number	4854
Location	HAYS, KANSAS
Recorded By	JEFF LUEBBERS
Witnessed By	TOM CASTELLI
	RICK POPP

<<< Fold Here >>>

All interpretations are opinions based on inferences from electrical or other measurements and we cannot and do not guarantee the accuracy or correctness of any interpretation, and we shall not, except in the case of gross or willful negligence on our part, be liable or responsible for any loss, costs, damages, or expenses incurred or sustained by anyone resulting from any interpretation made by any of our officers, agents or employees. These interpretations are also subject to our general terms and conditions set out in our current Price Schedule.

Comments

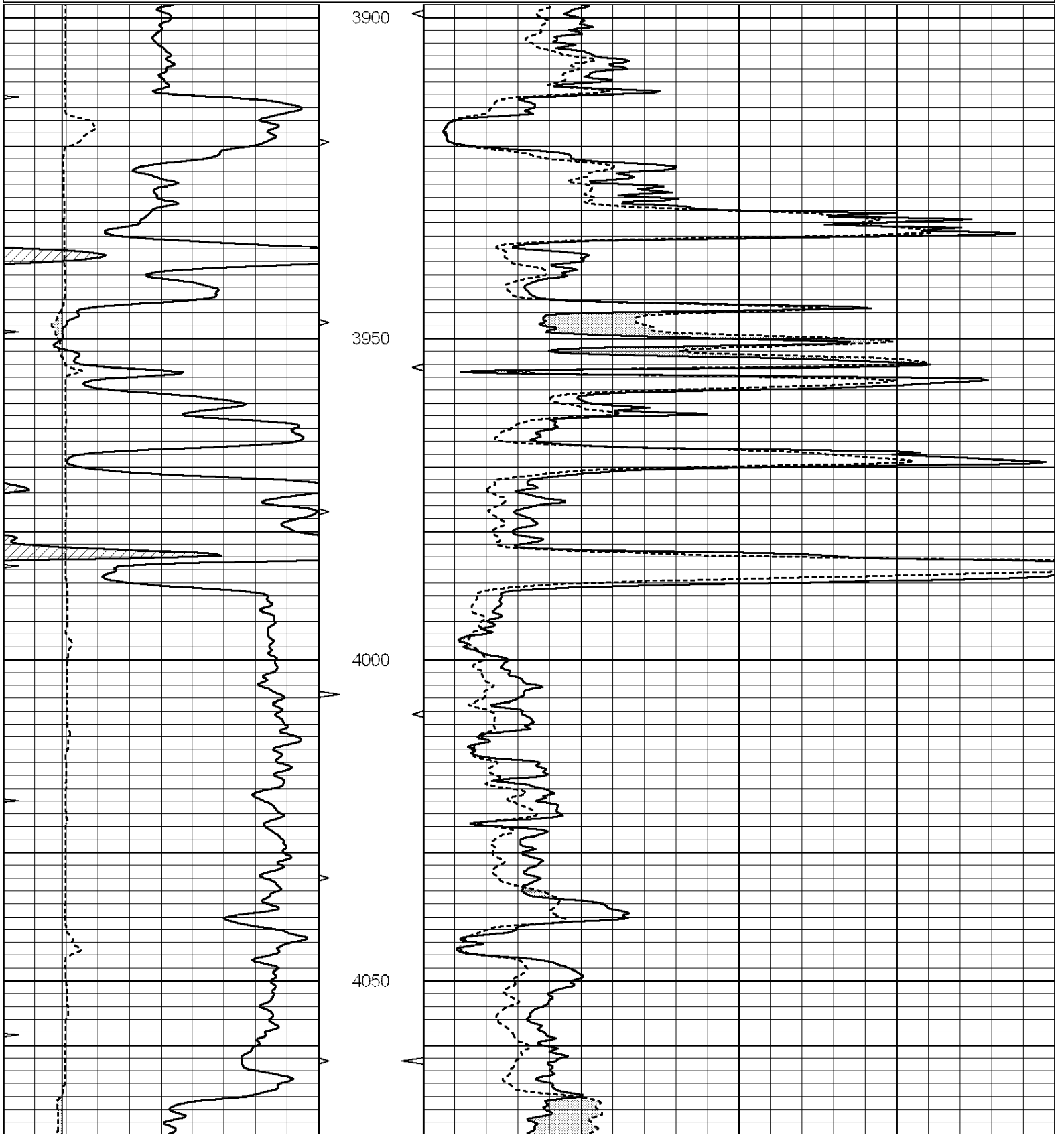
THANK YOU FOR USING "NABORS" HAYS, KANSAS (785) 628-6395
DIRECTIONS
COLDWATER, KS. 9E. ON HWY 160 TO (MM #193)"RD.22", 4S. TO STOP SIGN, 2E. TO OPEN RANGE, 4
S. & E. TO WHITE METAL BUILDING, 2 1/2S. INTO

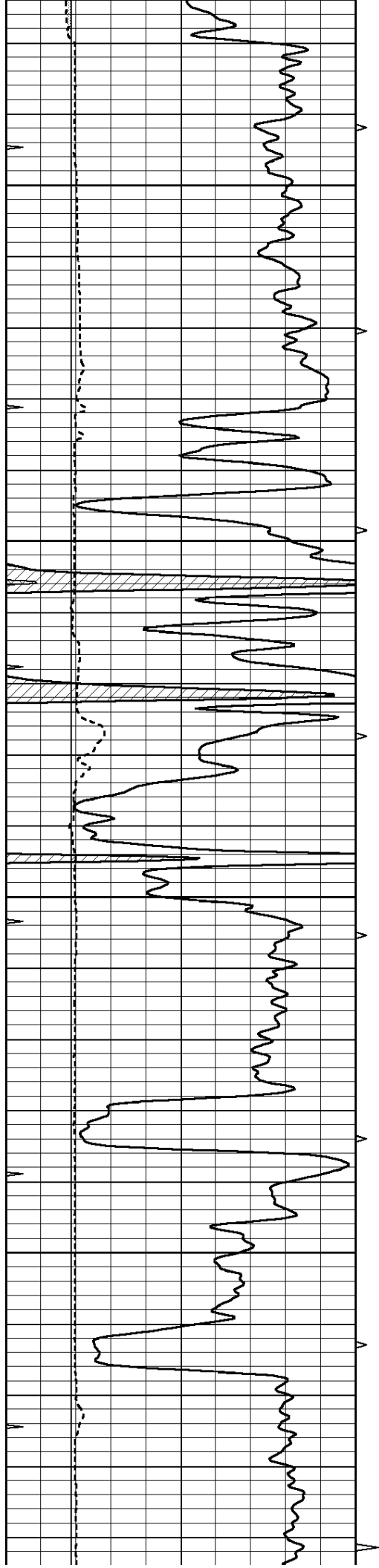


MAIN SECTION

Database File: 22241pe.db
 Dataset Pathname: pass7.3
 Presentation Format: micro
 Dataset Creation: Fri Jan 24 09:48:22 2014
 Charted by: Depth in Feet scaled 1:240

0	GAMMA RAY (GAPI)	150	ABHV	0	MEL1.5 (Ohm-m)	40
6	CALIPER (in)	16	10 (ft3)	0	MEL2.0 (Ohm-m)	40
0	MINMK	20	TBHV			
			0 (ft3)	10		



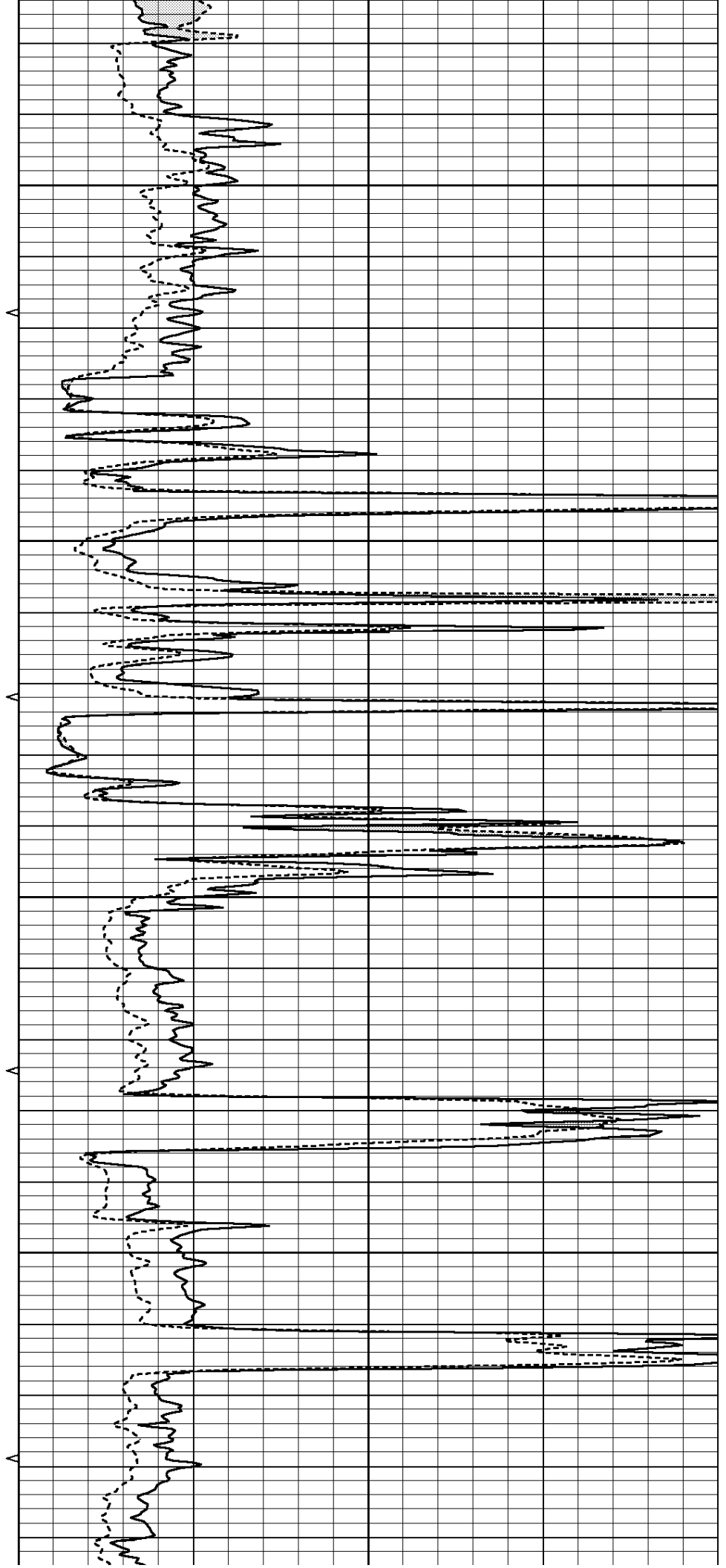


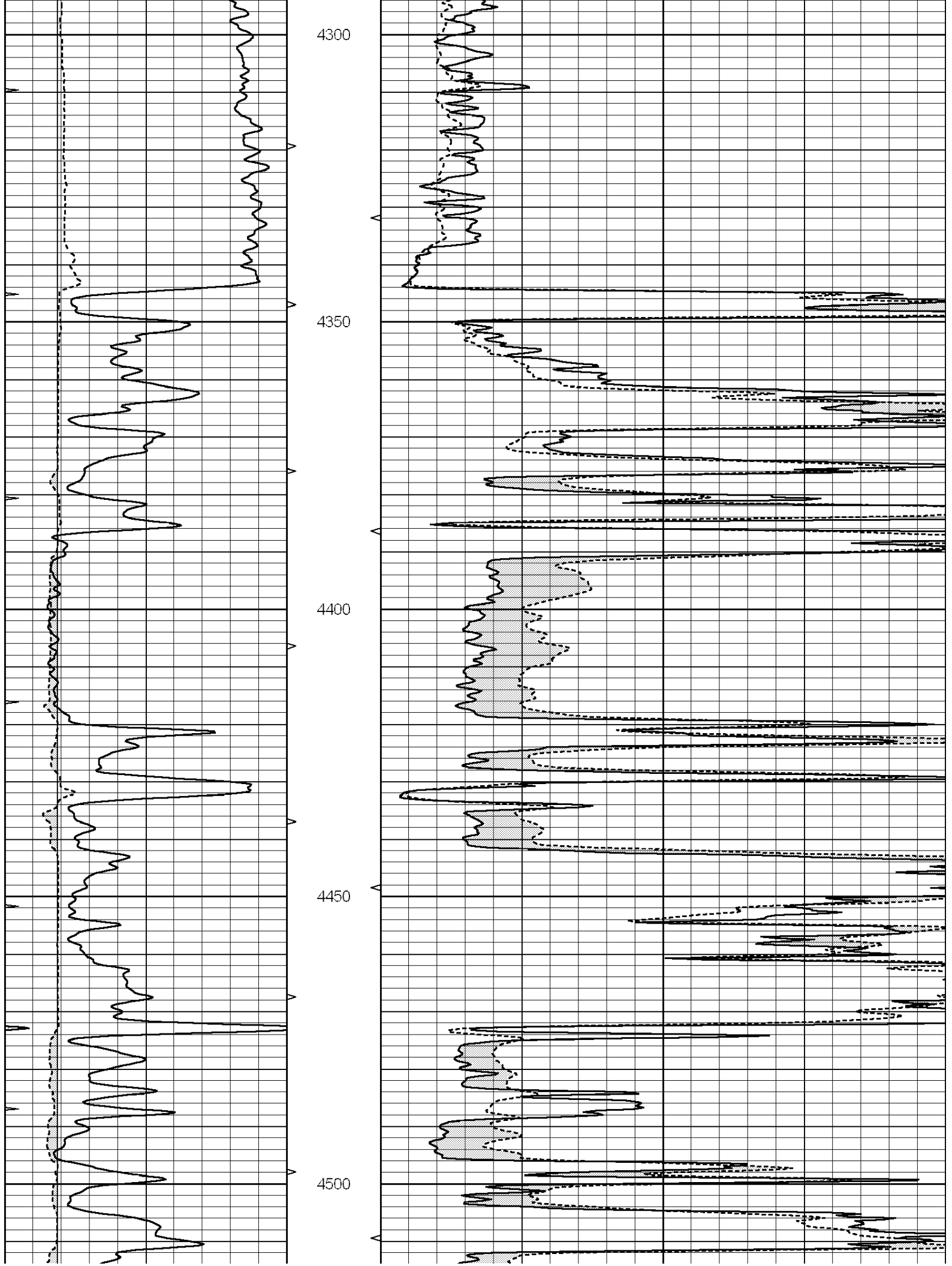
4100

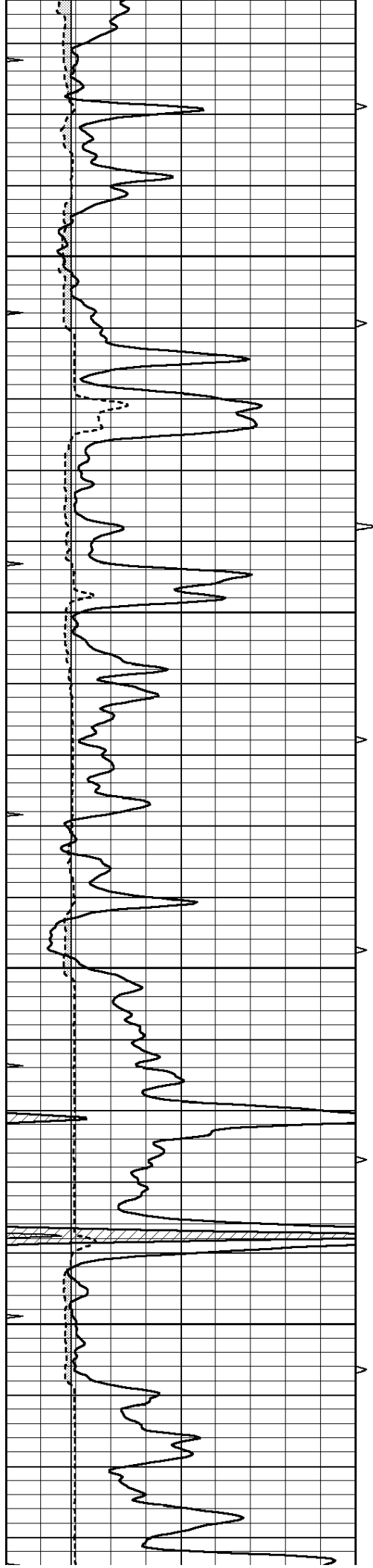
4150

4200

4250





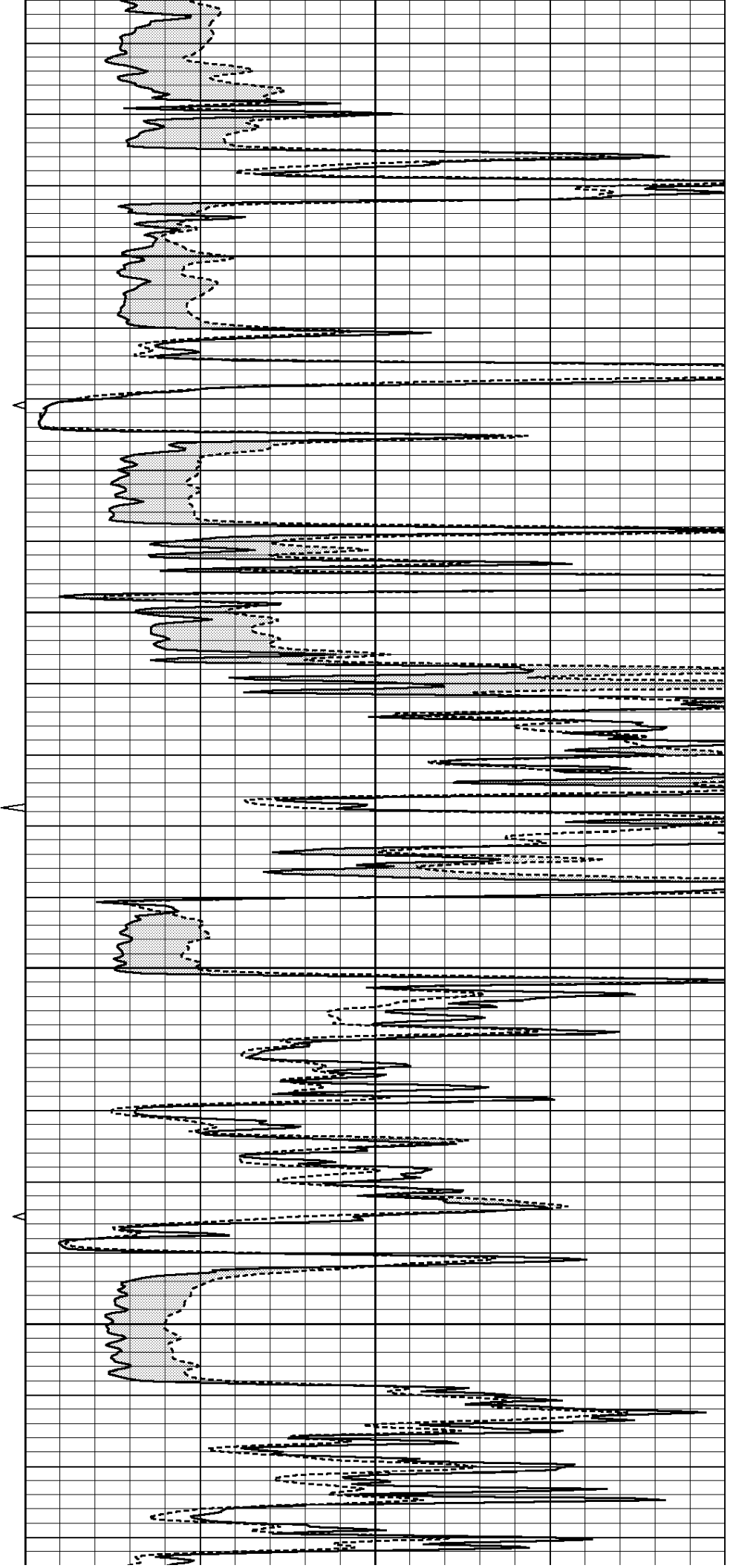


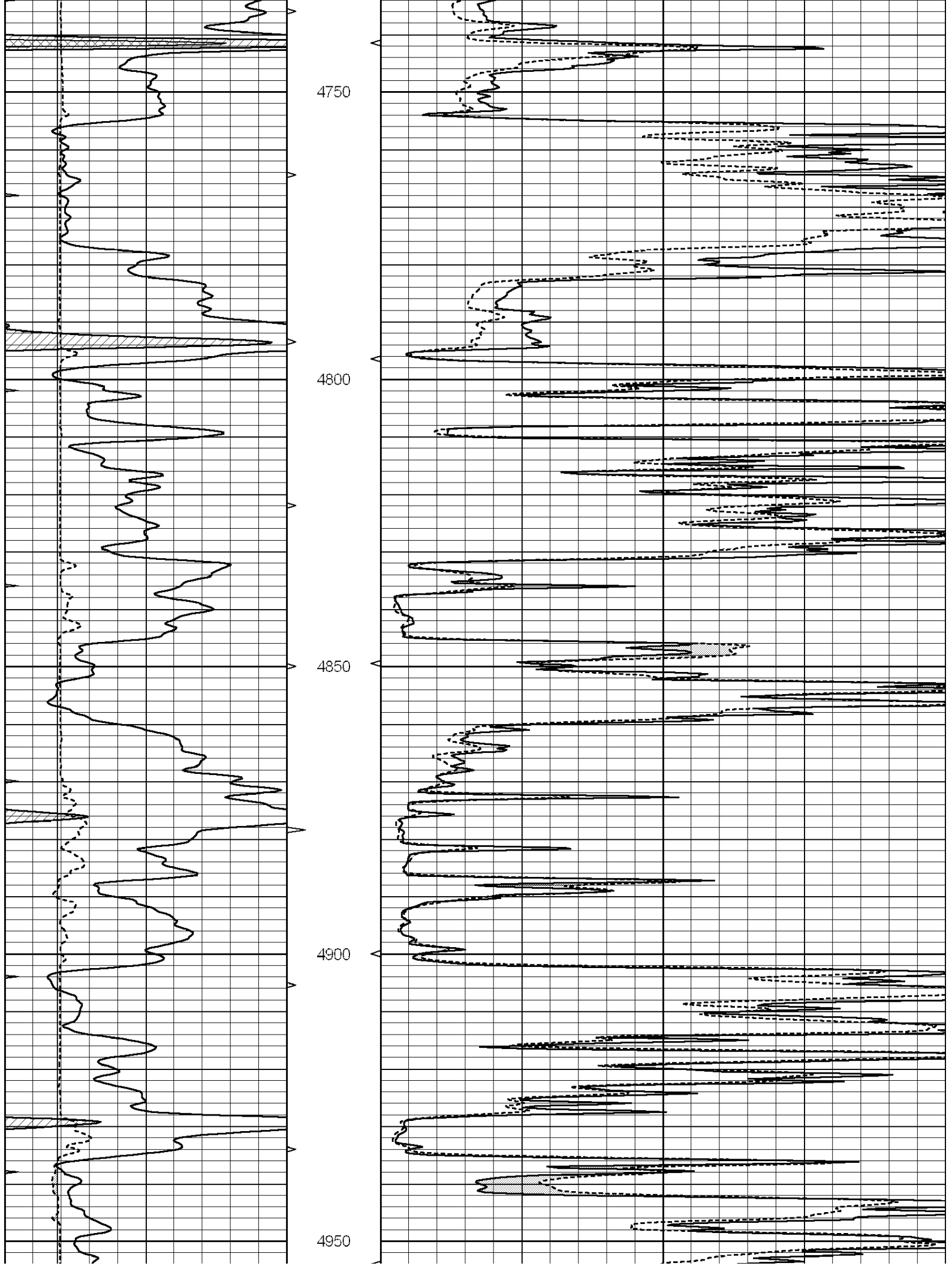
4550

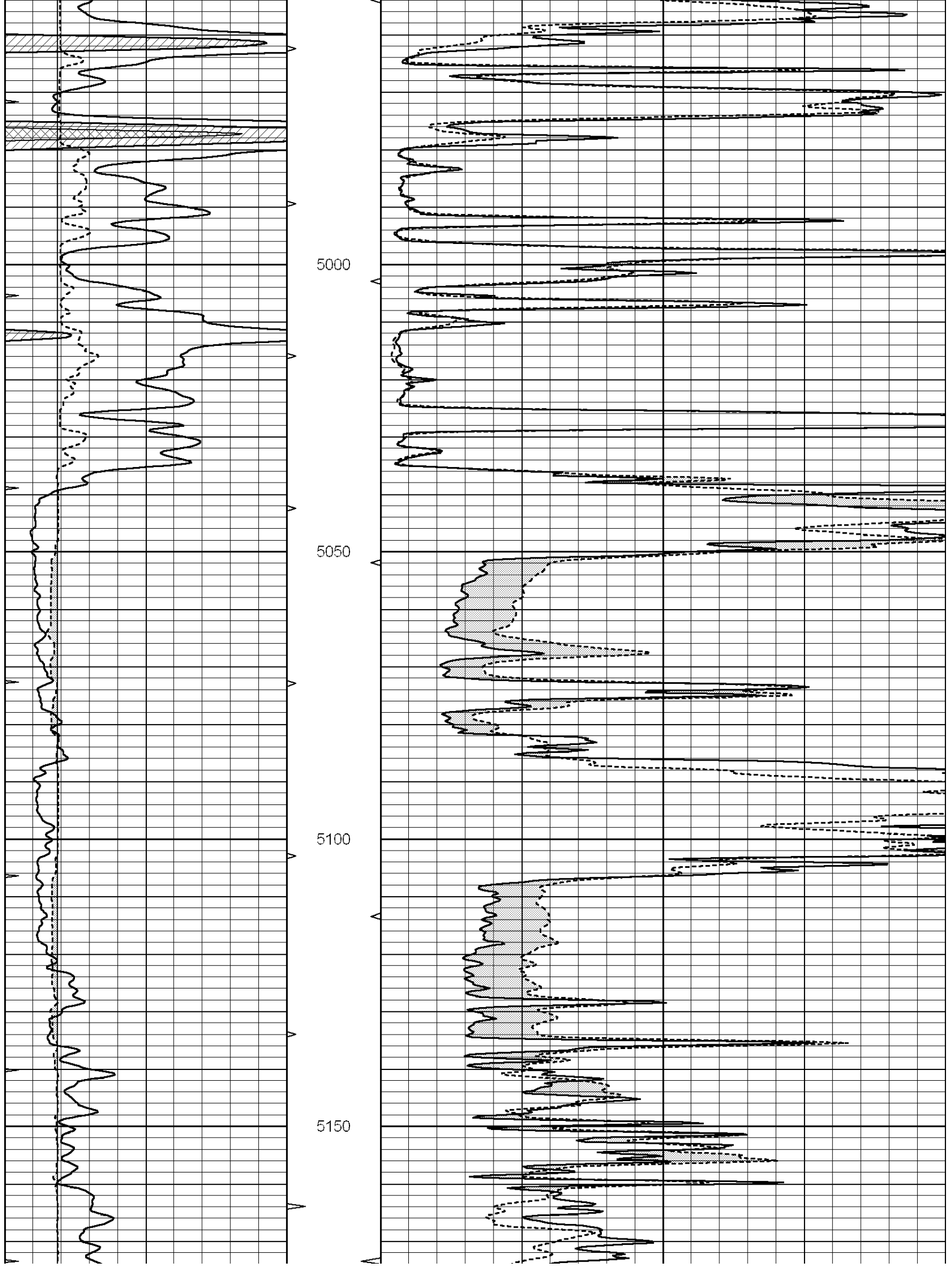
4600

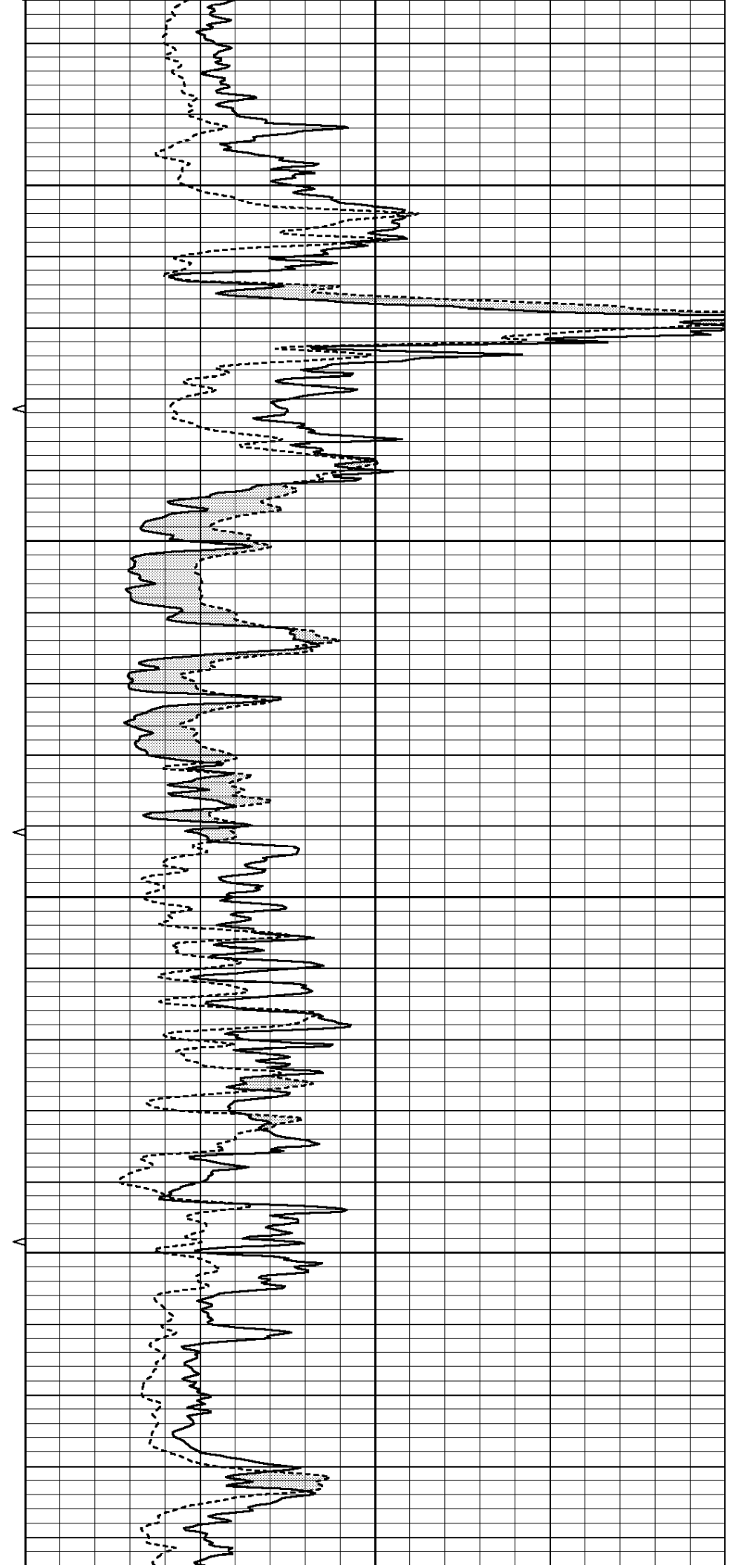
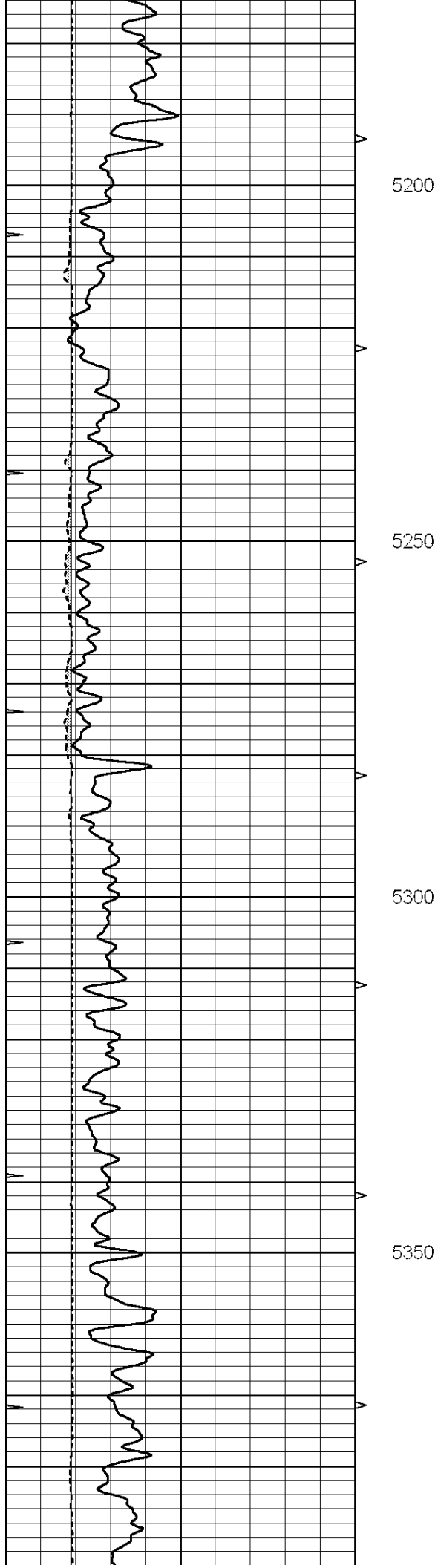
4650

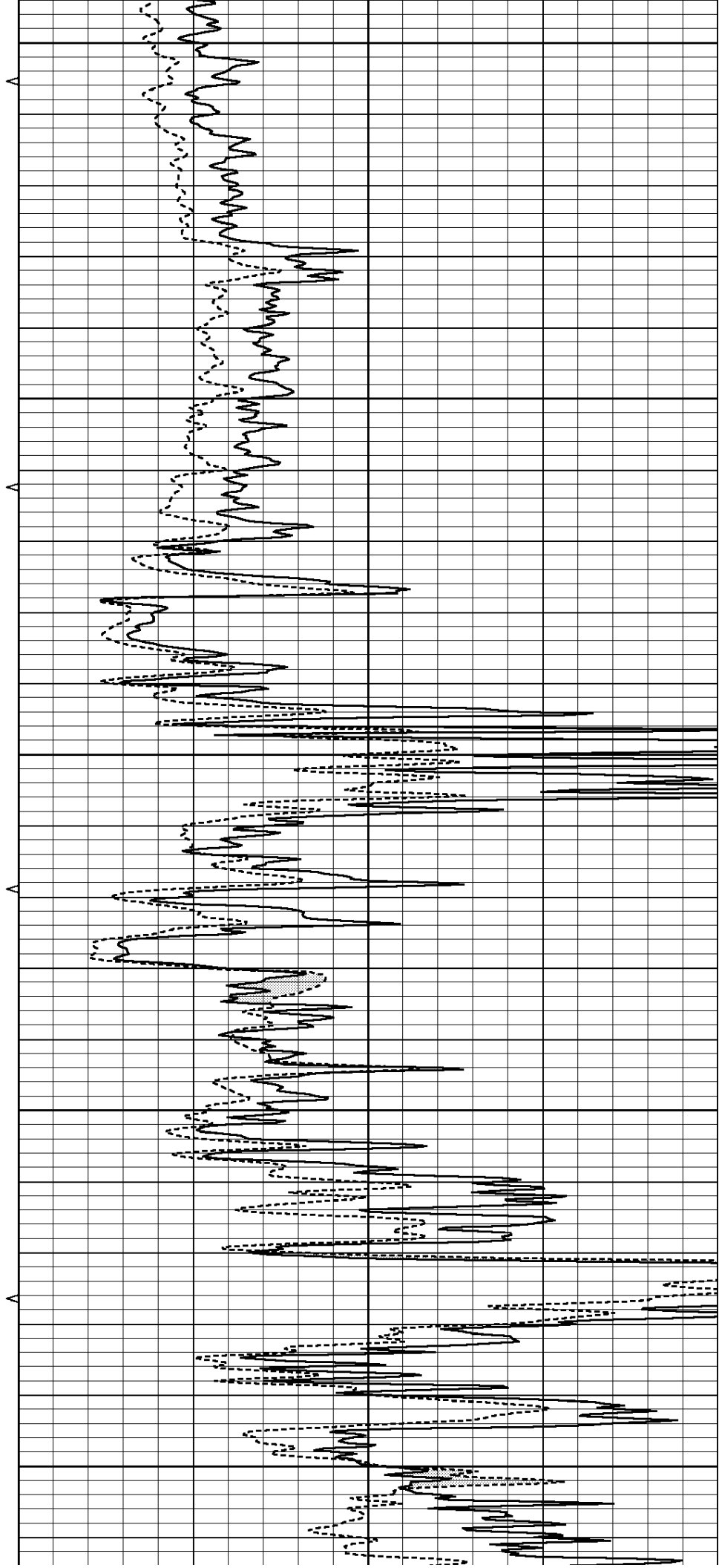
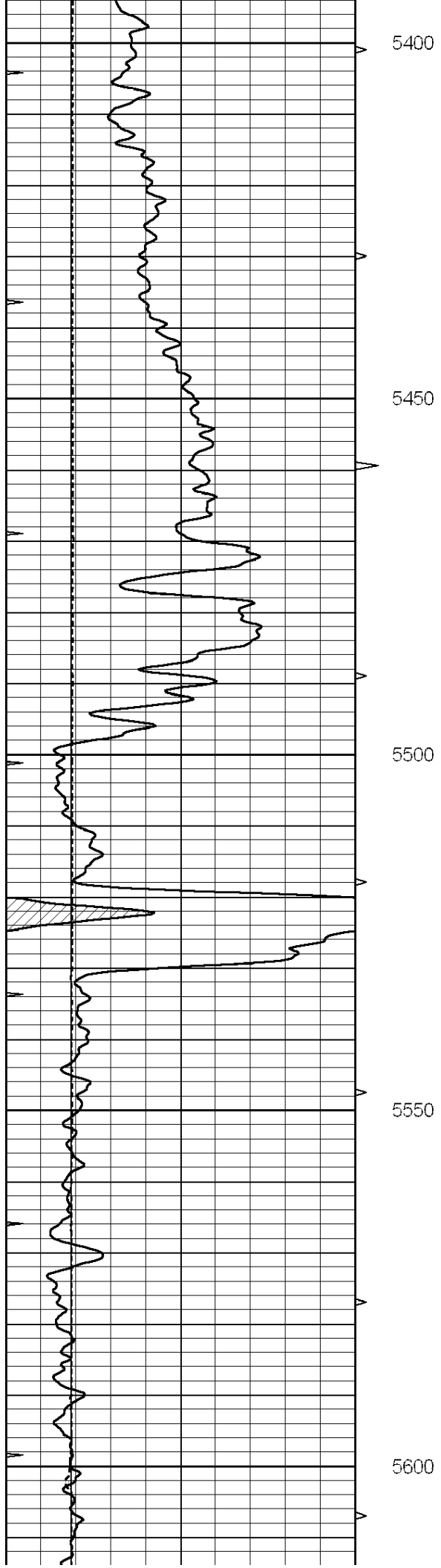
4700

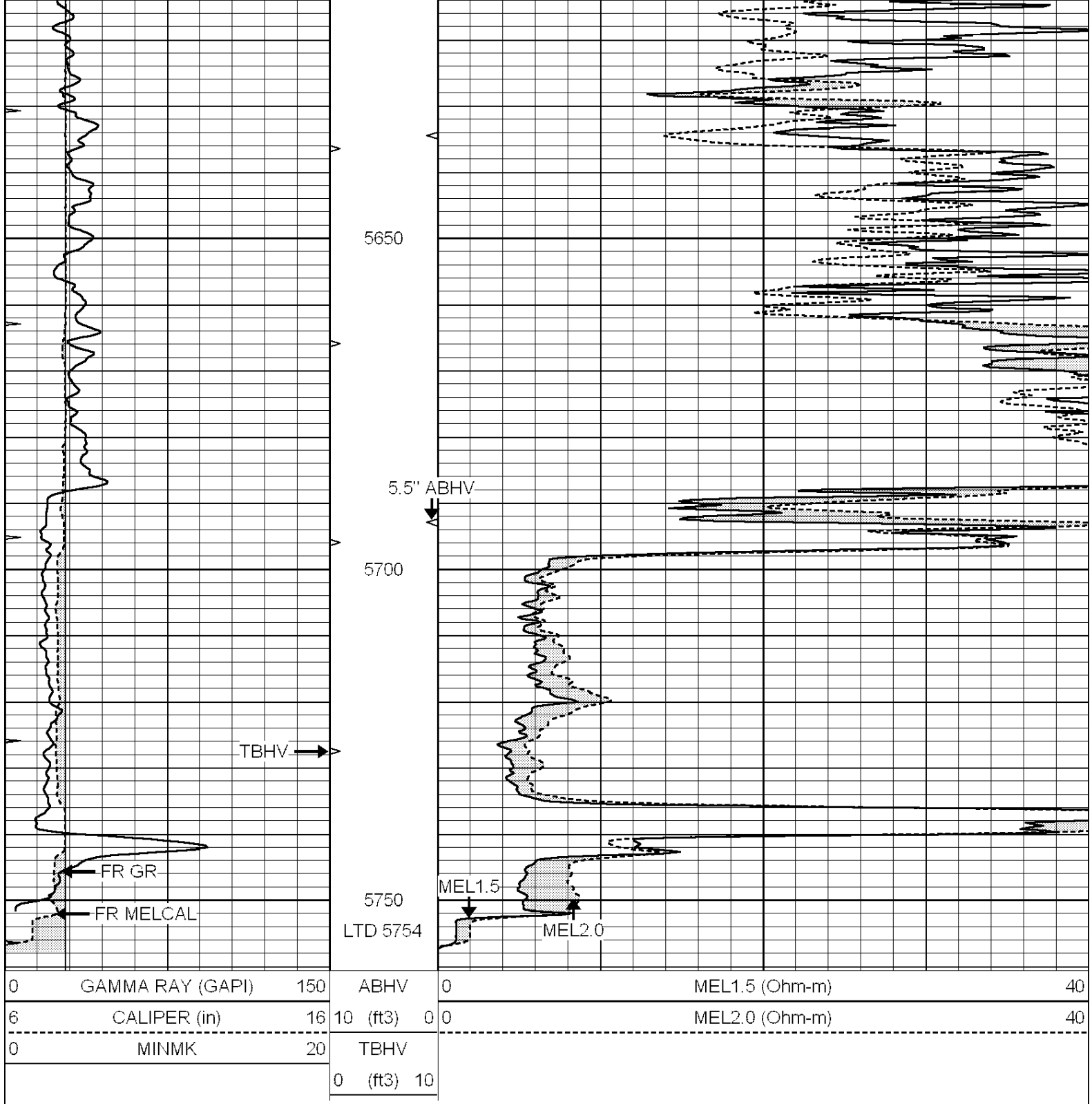












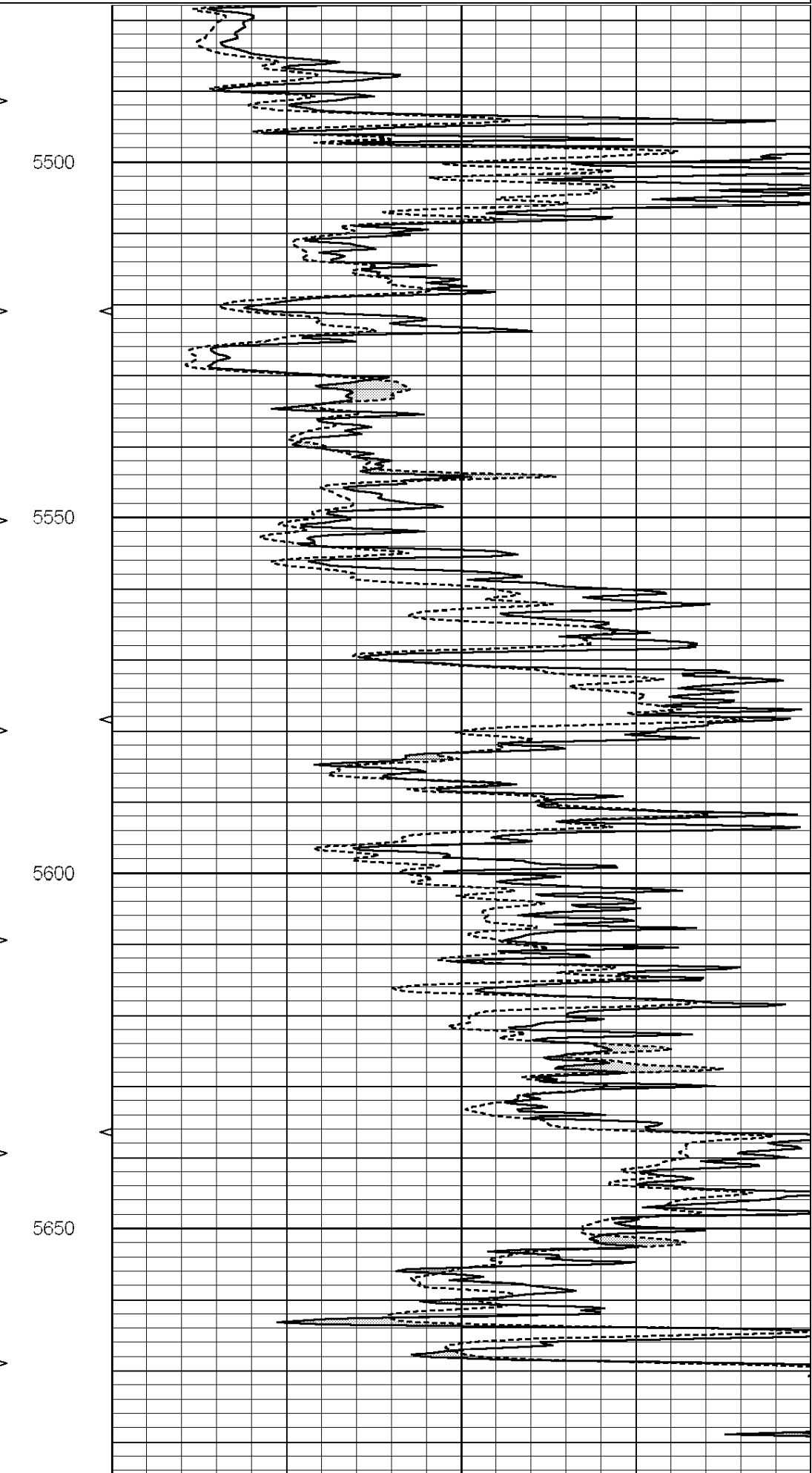
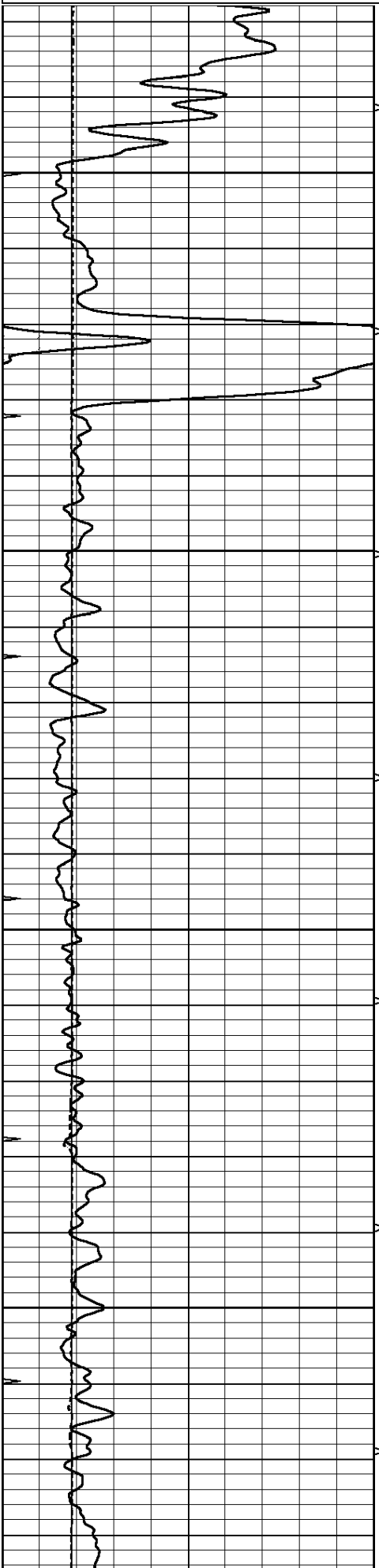
REPEAT SECTION

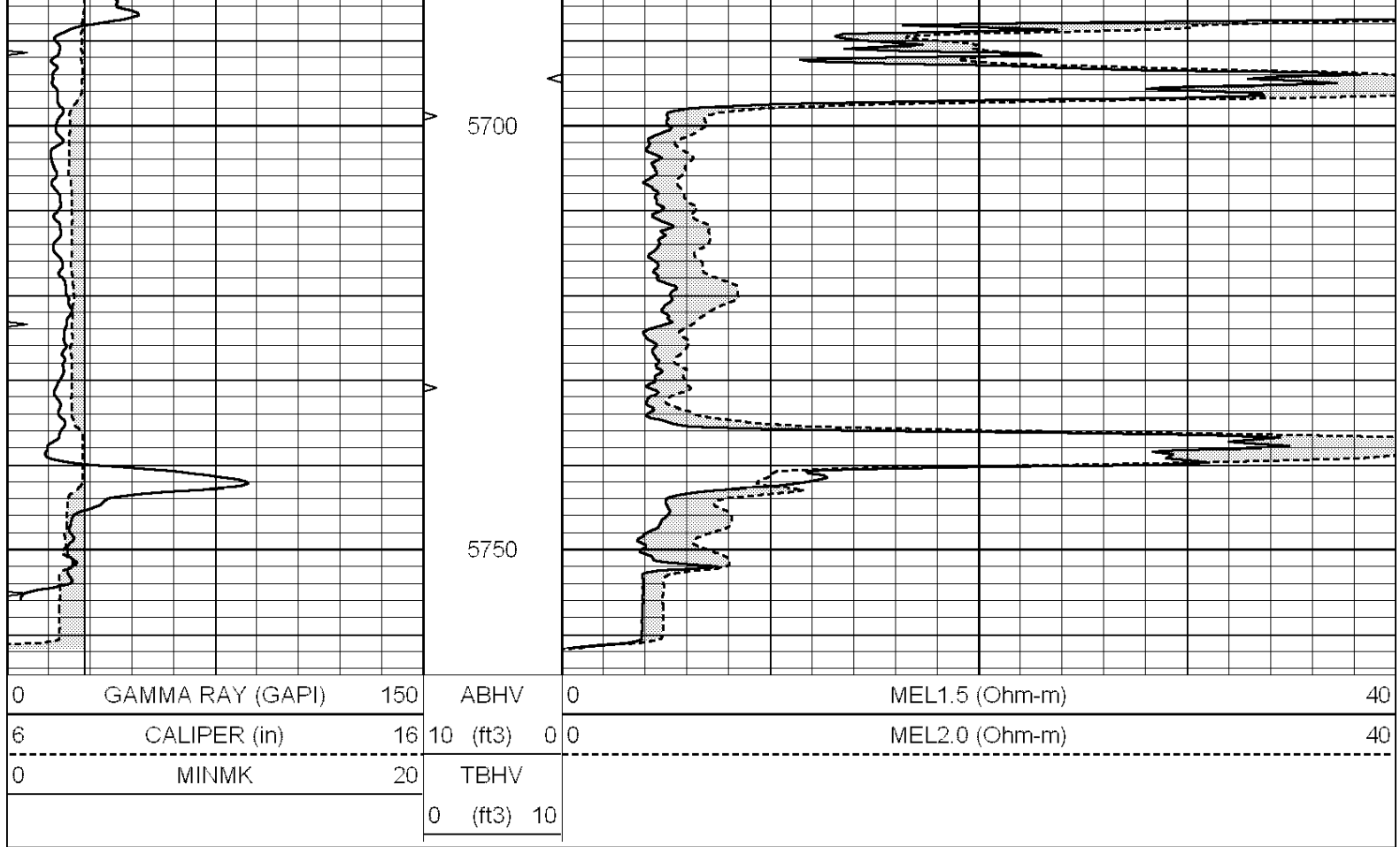
Database File: 22241pe.db
 Dataset Pathname: pass5.2
 Presentation Format: micro
 Dataset Creation: Fri Jan 24 08:33:39 2014 by Calc SOC 120430
 Charted by: Depth in Feet scaled 1:240

0	GAMMA RAY (GAPI)	150	ABHV	0	MEL1.5 (Ohm-m)	40
6	CALIPER (in)	16	10 (ft3)	0	MEL2.0 (Ohm-m)	40

0 MINMK 20
0 (ft3) 10

TBHV





Calibration Report

Database File: 22241pe.db
 Dataset Pathname: pass7.3
 Dataset Creation: Fri Jan 24 09:48:22 2014

MICRO Calibration Report

Serial Number:	070910	
Tool Model:	ProbeN	
Performed:	Thu Jan 23 15:26:53 2014	
Caliper Calibration:	Gain=4.208	Offset=1.270
References	Low Cal	High Cal
Readings	7.800	15.000
	1.552	3.263
1.5" Calibration:	Gain=26.000	Offset=0.000
References	Low Cal	High Cal
Readings	0.000	20.000
	0.001	1.229
2" Calibration:	Gain=50.000	Offset=-0.800
References	Low Cal	High Cal
Readings	0.000	20.000
	0.004	1.057

Gamma Ray Calibration Report

Serial Number:	080328	
Tool Model:	Probe1	
Performed:	Fri Jan 24 08:06:14 2014	
Calibrator Value:	1.0	GAPI

Calibrator Value:	1.0	GAPI
Background Reading:	0.0	cps
Calibrator Reading:	1.0	cps
Sensitivity:	0.2200	GAPI/cps