



**COMPLETION
& PRODUCTION
SERVICES CO.**

**DUAL INDUCTION
LOG**

Company CASTELLI EXPLORATION, INC.
Well GREGG "A" #1-19
Field SHIMER
County COMANCHE
State KANSAS

Company CASTELLI EXPLORATION, INC.
Well GREGG "A" #1-19
Field SHIMER
County COMANCHE State KANSAS

Location: API # : 15-033-21742-0000
1980' FSL & 2130' FEL
E/2 - W/2 - NW - SE
SEC 19 TWP 33S RGE 16W
Permanent Datum GROUND LEVEL Elevation 1841
Log Measured From KELLY BUSHING 13' A.G.L.
Drilling Measured From KELLY BUSHING
Other Services
CDL/CNL/PE
MEL
Elevation
K.B. 1854
D.F. 1852
G.L. 1841

Date	1/24/14
Run Number	ONE
Depth Driller	5750
Depth Logger	5754
Bottom Logged Interval	5752
Top Log Interval	00
Casing Driller	13 3/8" @ 314'
Casing Logger	314
Bit Size	7 7/8"
Type Fluid in Hole	CHEMICAL MUD
Density / Viscosity	9.5/52
pH / Fluid Loss	11.0/8.8
Source of Sample	FLOWLINE
Rim @ Meas. Temp	.950 @ 65F
Rmf @ Meas. Temp	.713 @ 65F
Rmc @ Meas. Temp	1.14 @ 65F
Source of Rmf / Rmc	MEASUREMENT
Rim @ BHT	.468 @ 132F
Time Circulation Stopped	3 HOURS
Time Logger on Bottom	5:15 A.M.
Maximum Recorded Temperature	132F
Equipment Number	4854
Location	HAYS, KANSAS
Recorded By	JEFF LUEBBERS
Witnessed By	TOM CASTELLI
	RICK POPP

<<< Fold Here >>>

All interpretations are opinions based on inferences from electrical or other measurements and we cannot and do not guarantee the accuracy or correctness of any interpretation, and we shall not, except in the case of gross or willful negligence on our part, be liable or responsible for any loss, costs, damages, or expenses incurred or sustained by anyone resulting from any interpretation made by any of our officers, agents or employees. These interpretations are also subject to our general terms and conditions set out in our current Price Schedule.

Comments

THANK YOU FOR USING "NABORS" HAYS, KANSAS (785) 628-6395
DIRECTIONS
COLDWATER, KS. 9E. ON HWY 160 TO (MM #193)"RD.22", 4S. TO STOP SIGN, 2E. TO OPEN RANGE, 4
S. & E. TO WHITE METAL BUILDING, 2 1/2S. INTO



MAIN SECTION

Database File: 22241pe.db
 Dataset Pathname: pass3.8
 Presentation Format: dil2
 Dataset Creation: Fri Jan 24 07:22:26 2014 by Calc SOC 120430
 Charted by: Depth in Feet scaled 1:600

0 Gamma Ray (GAPI) 150
 -100 SP (mV) 100

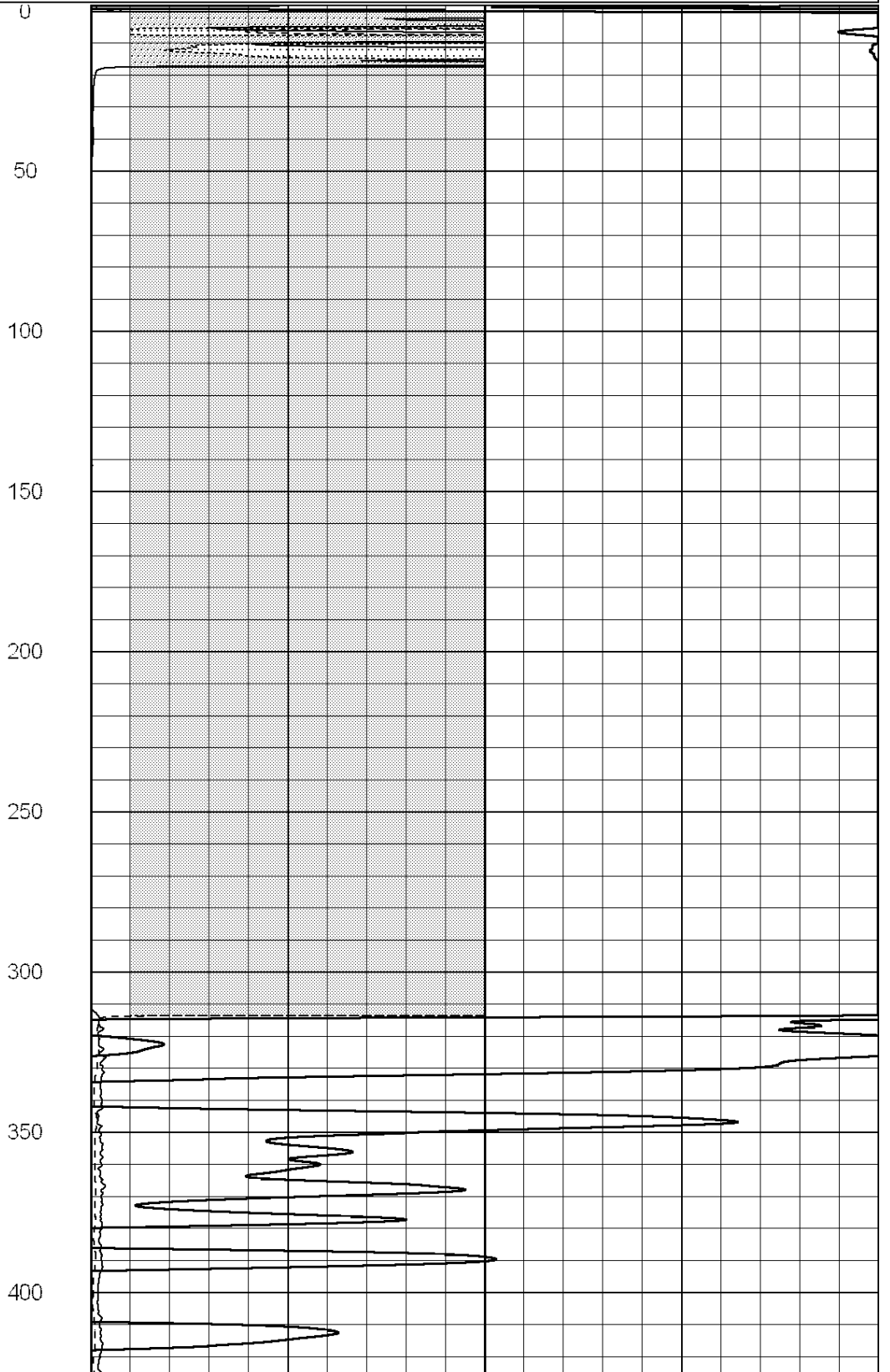
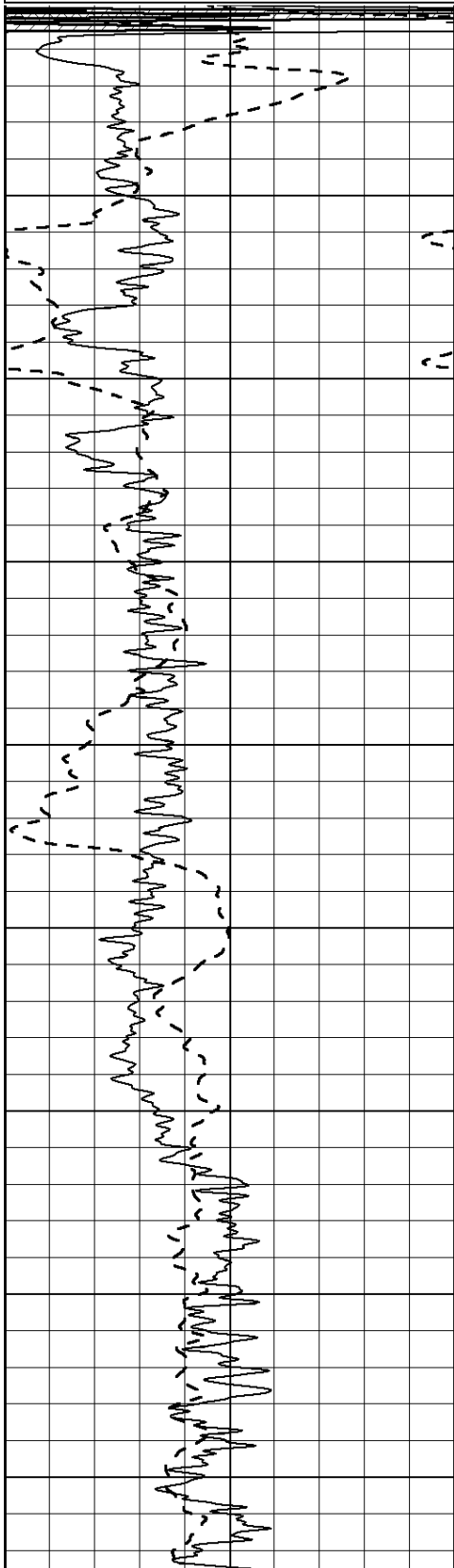
0 RLL3 (Ohm-m) 50

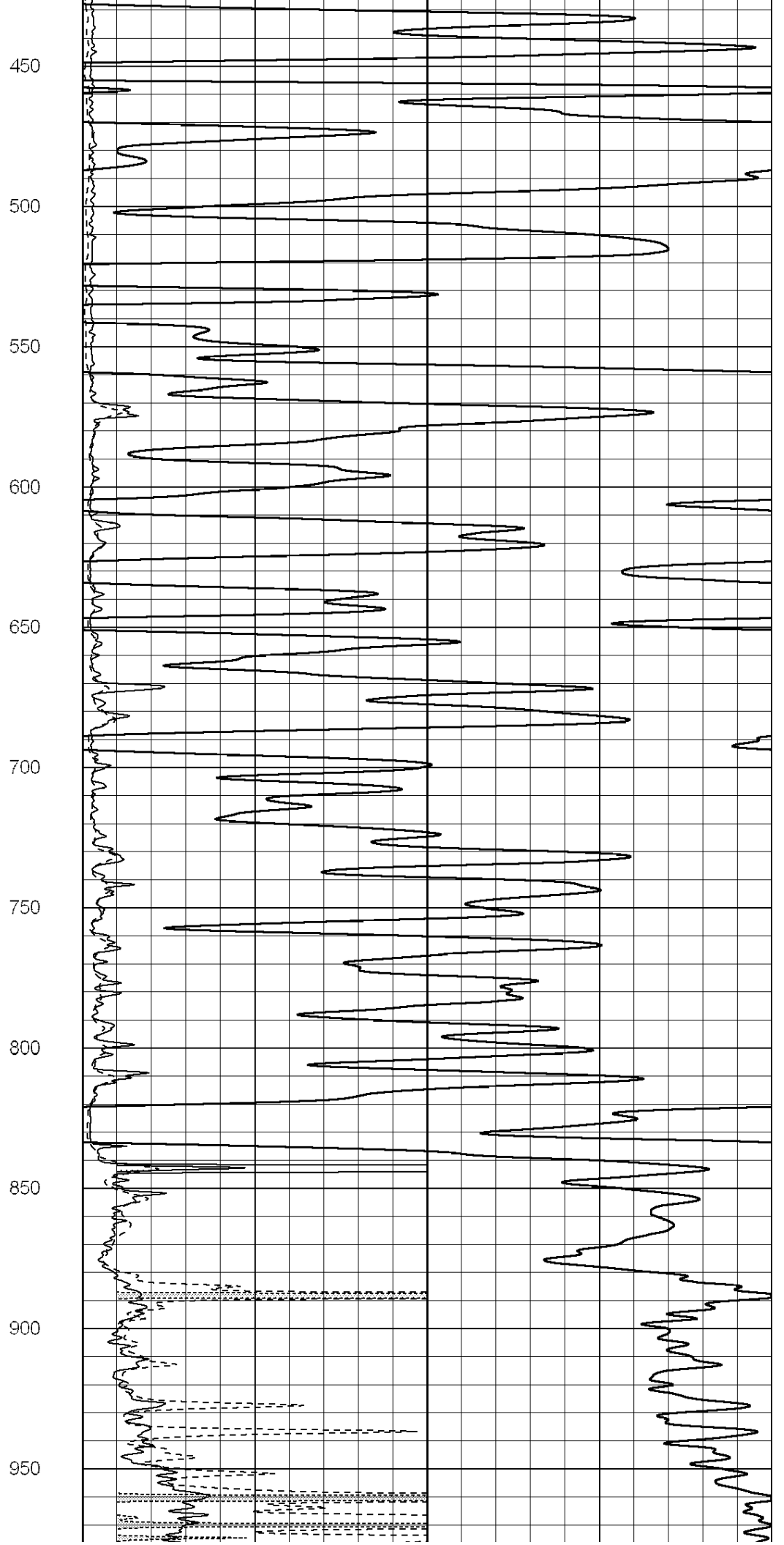
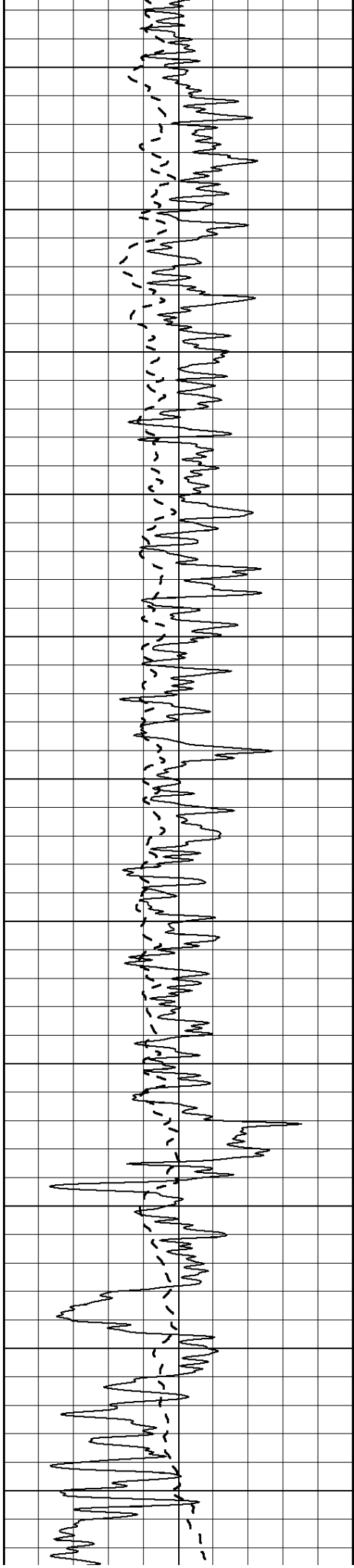
0 RILD (Ohm-m) 50

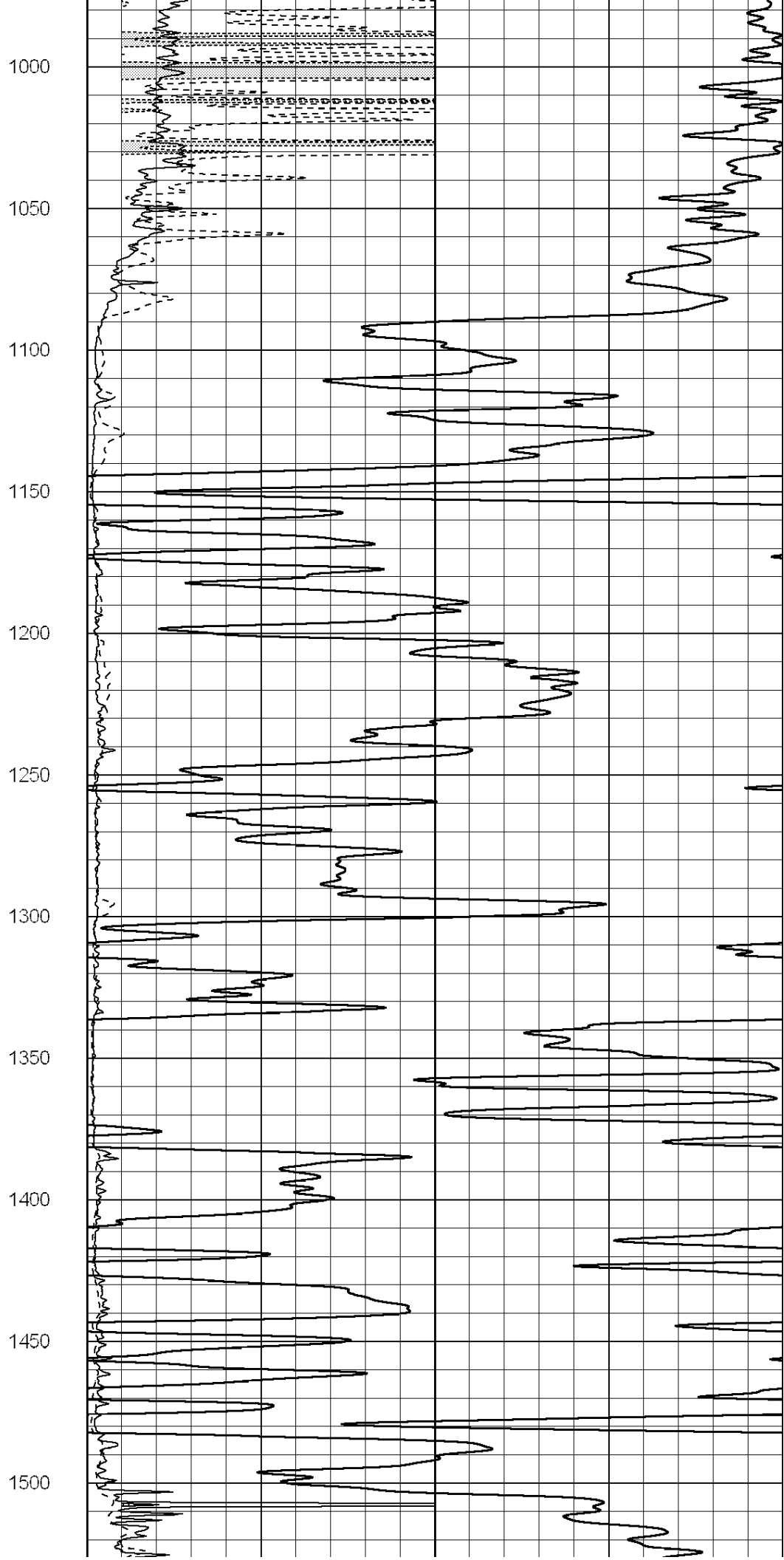
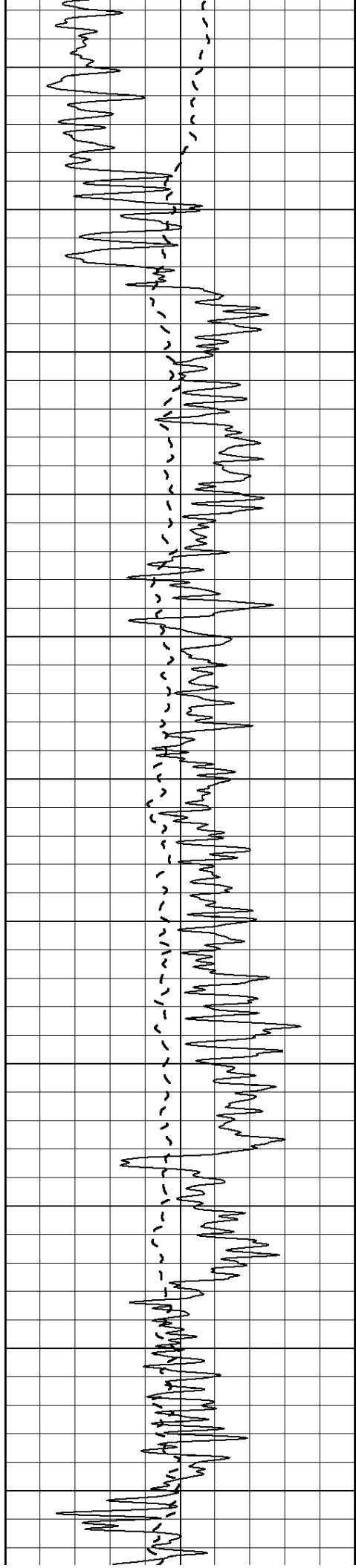
1000 CILD (mmho/m) 0

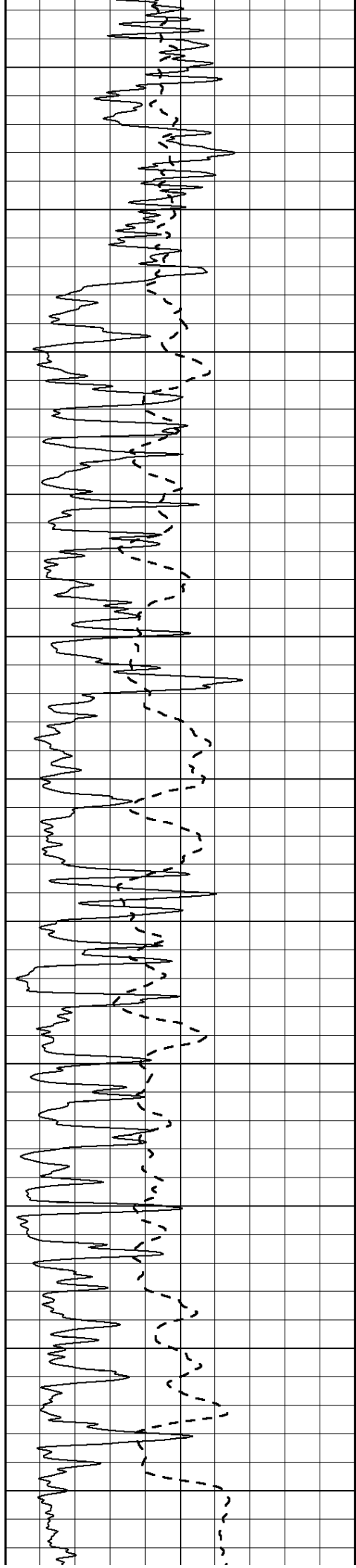
50 RILD X10 (Ohm-m) 500

50 RLL3 X10 (Ohm-m) 500









1550

1600

1650

1700

1750

1800

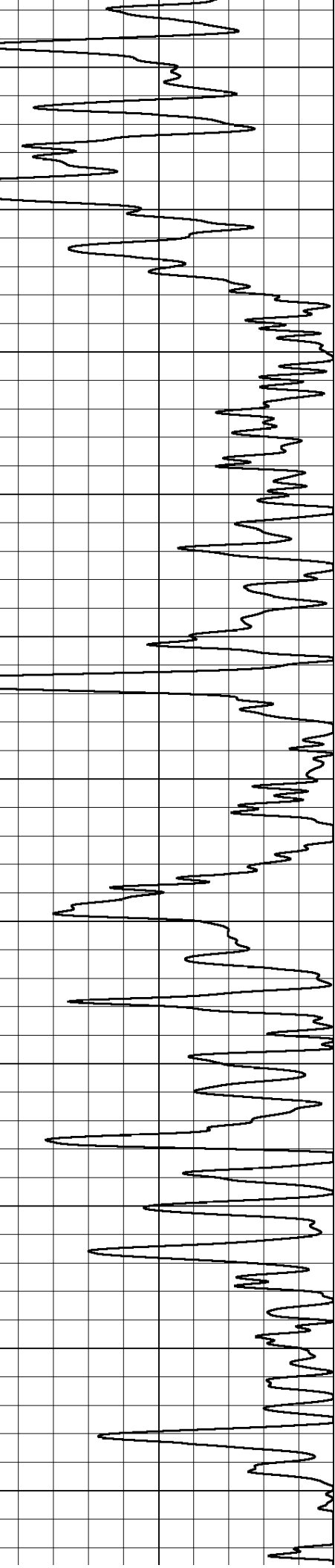
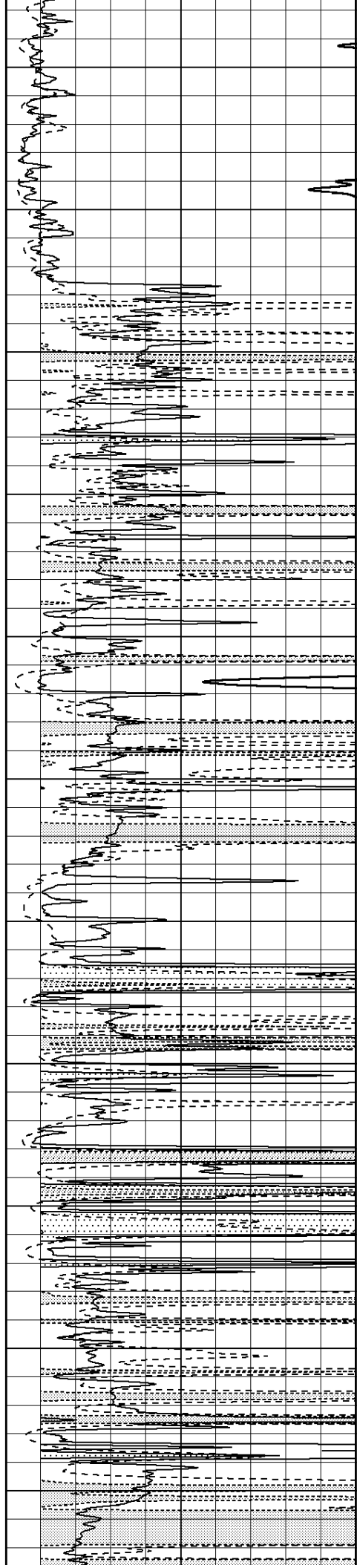
1850

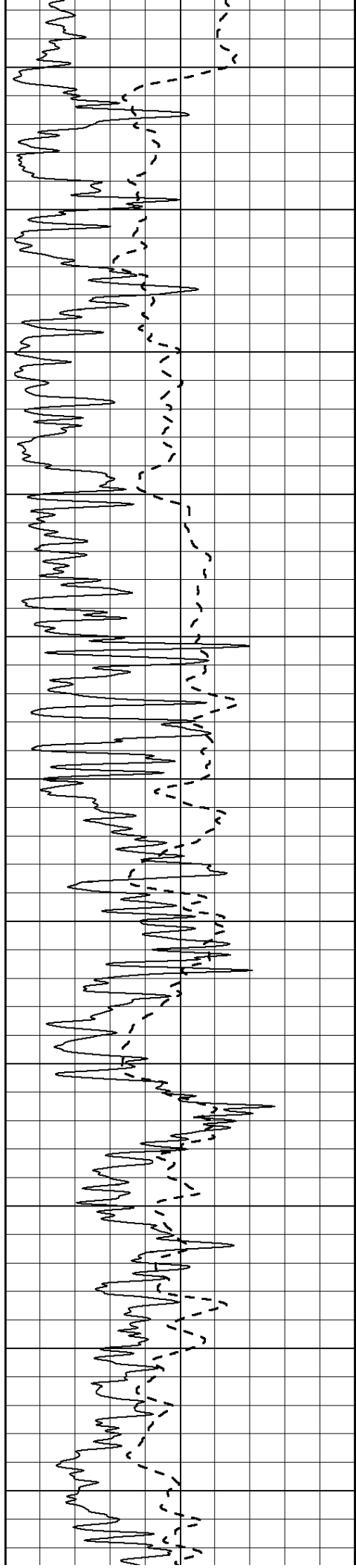
1900

1950

2000

2050





2100

2150

2200

2250

2300

2350

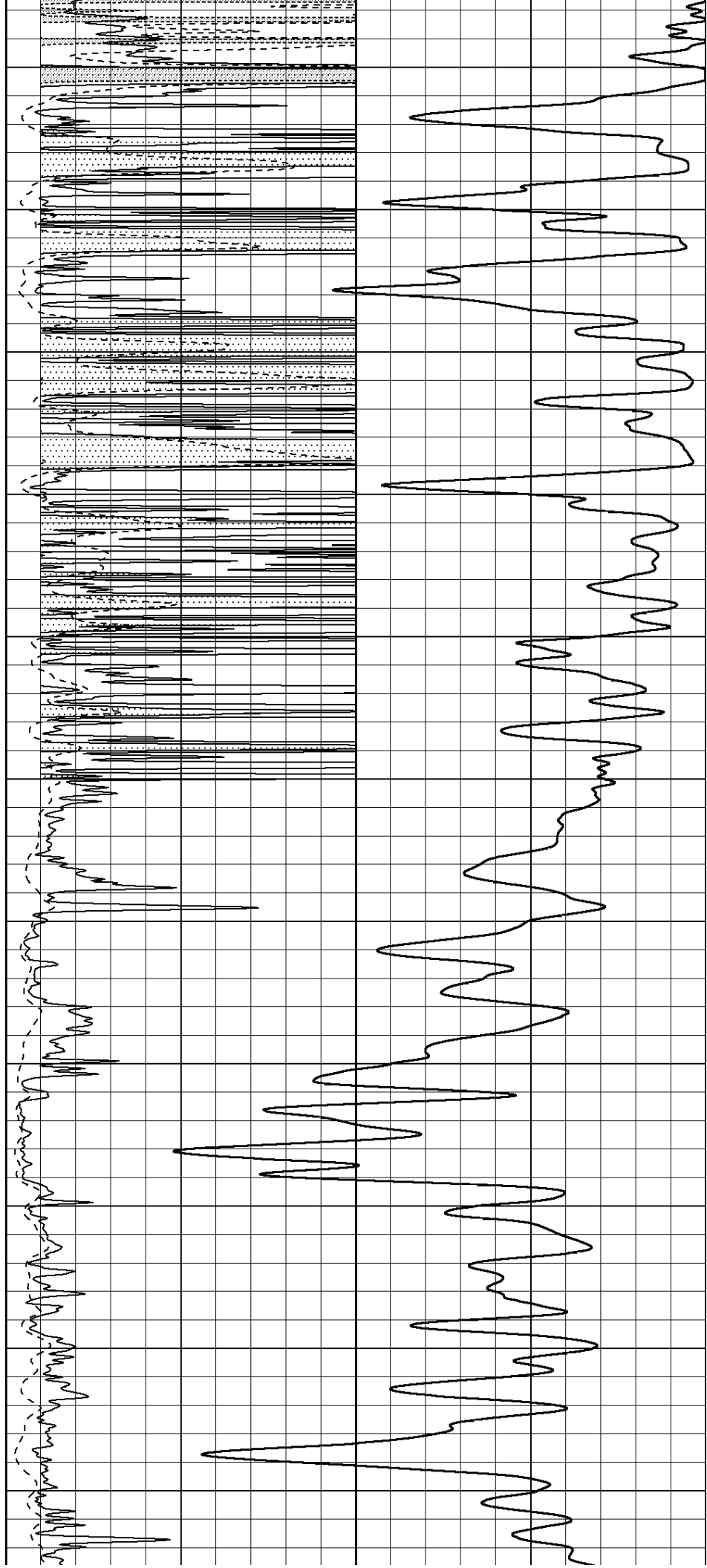
2400

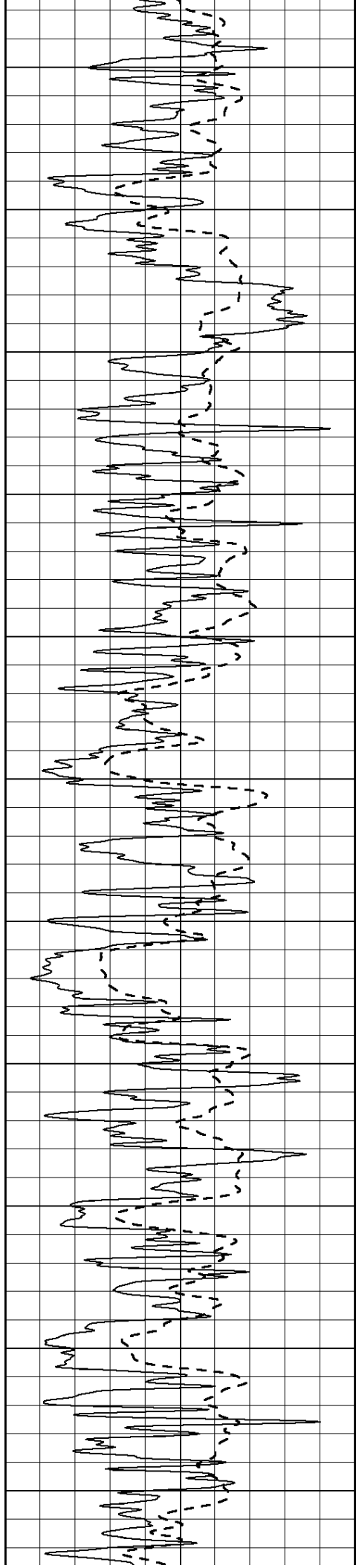
2450

2500

2550

2600





2650

2700

2750

2800

2850

2900

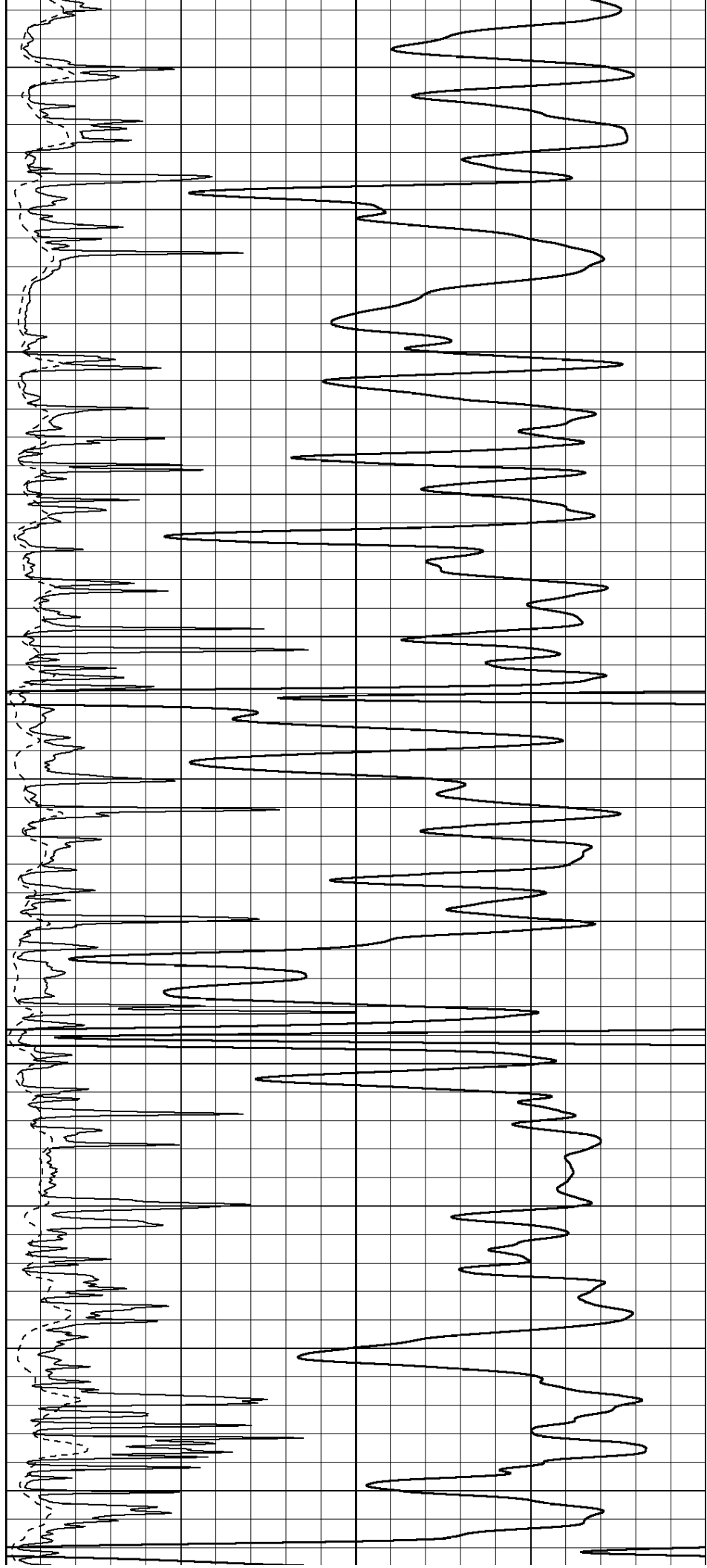
2950

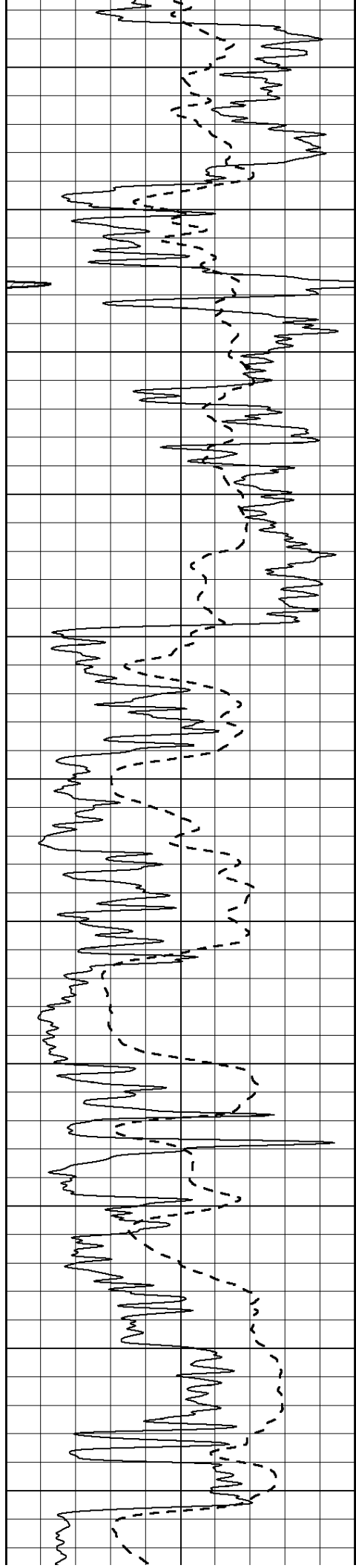
3000

3050

3100

3150





3200

3250

3300

3350

3400

3450

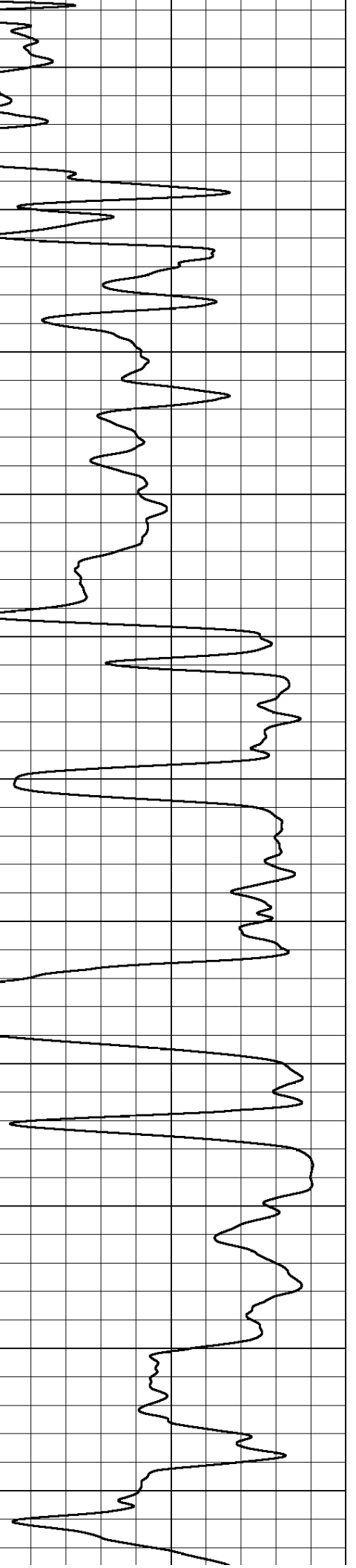
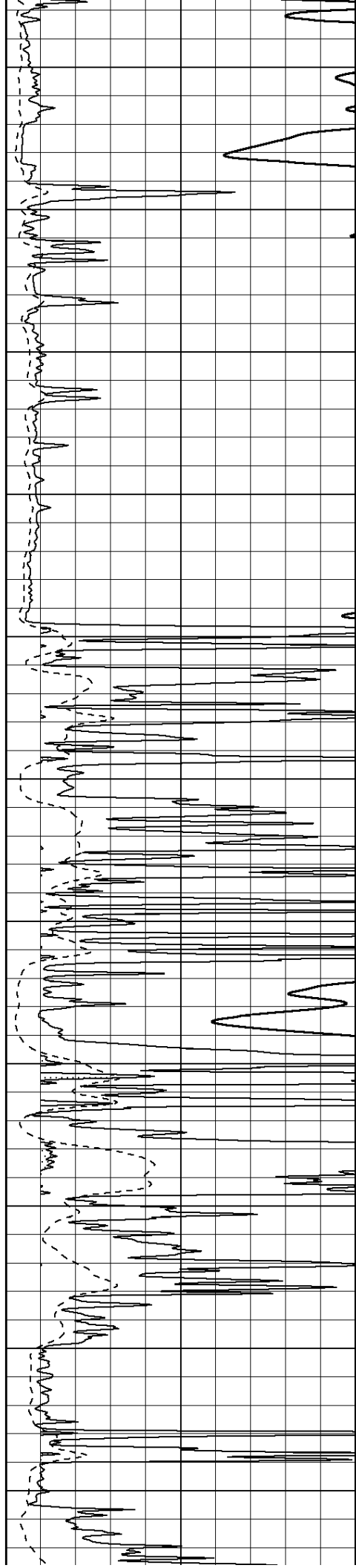
3500

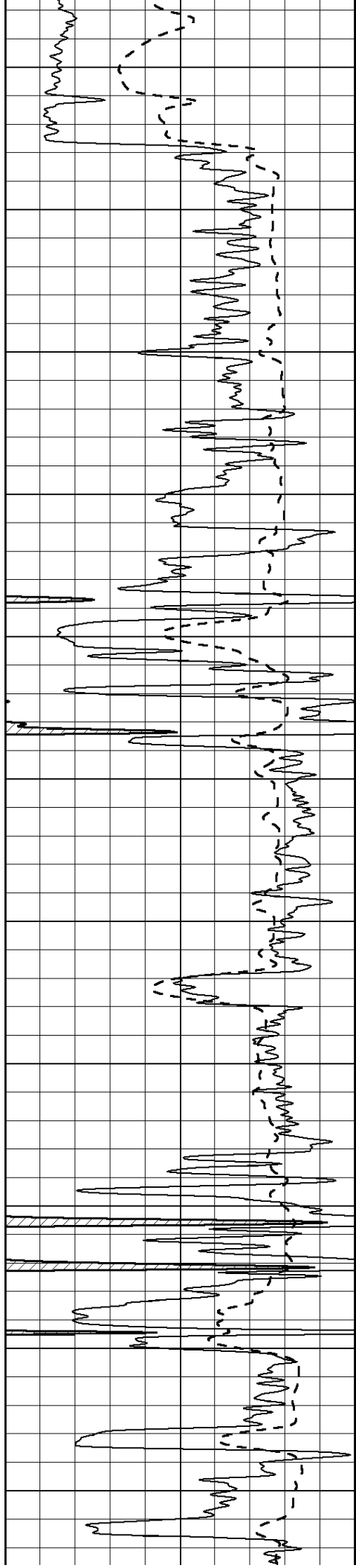
3550

3600

3650

3700





3750

3800

3850

3900

3950

4000

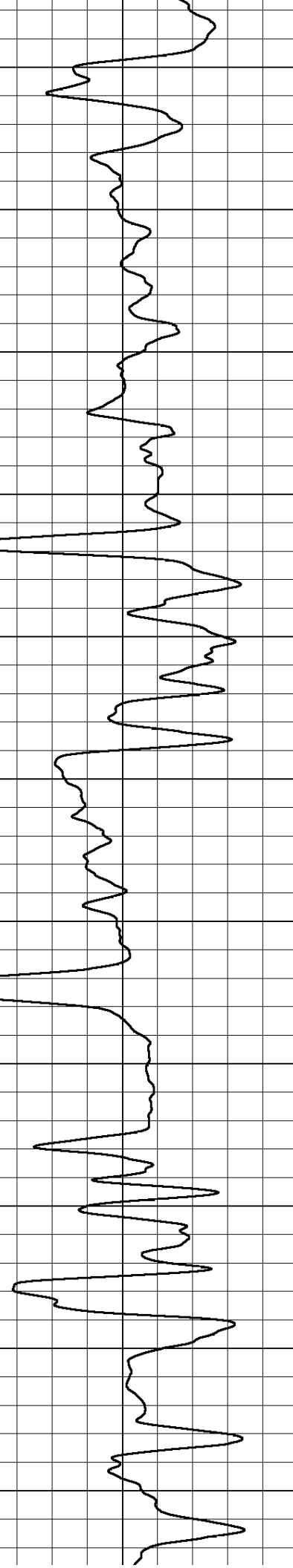
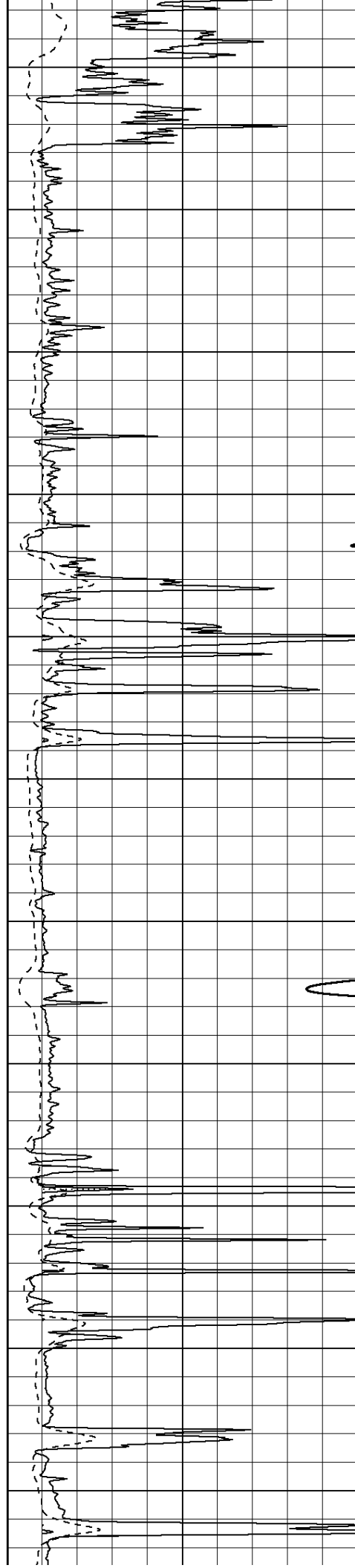
4050

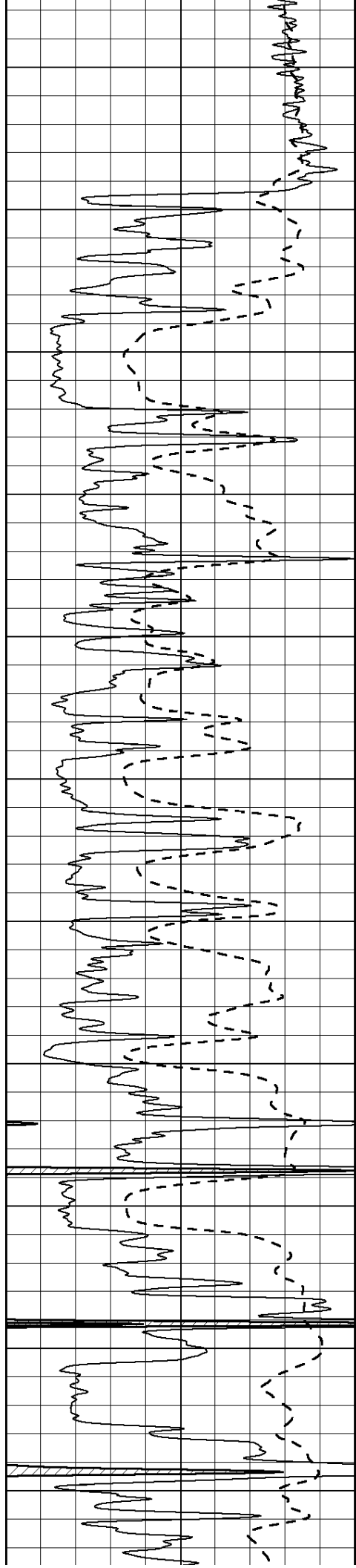
4100

4150

4200

4250





4300

4350

4400

4450

4500

4550

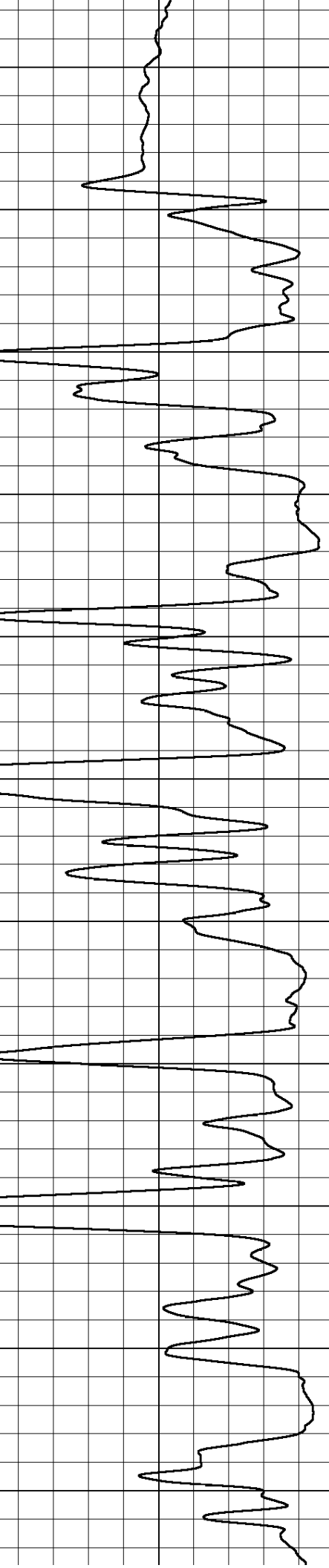
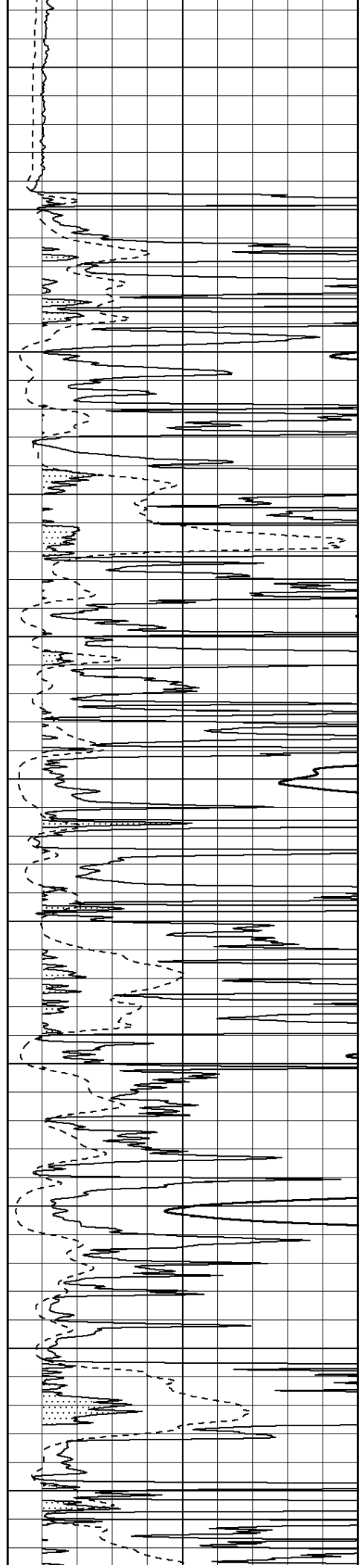
4600

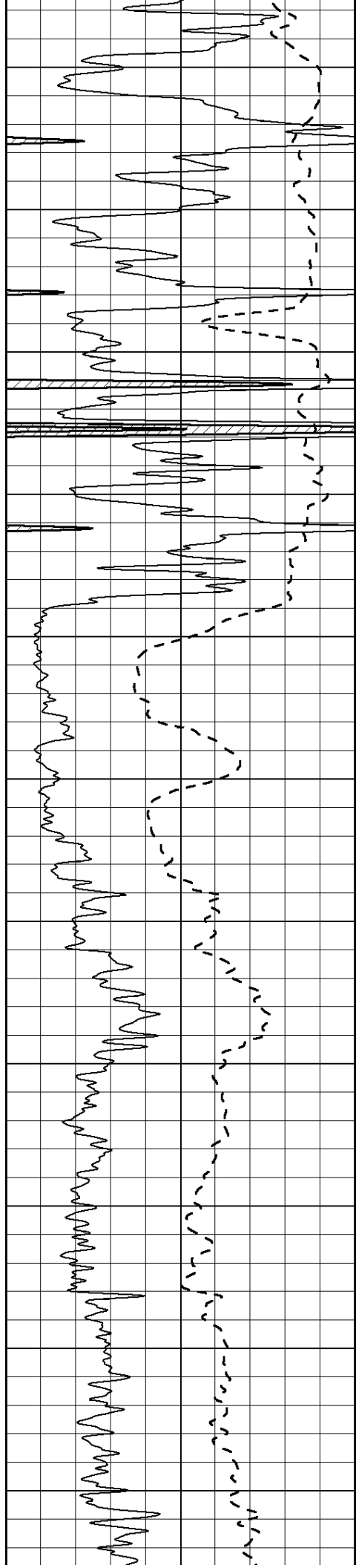
4650

4700

4750

4800





4850

4900

4950

5000

5050

5100

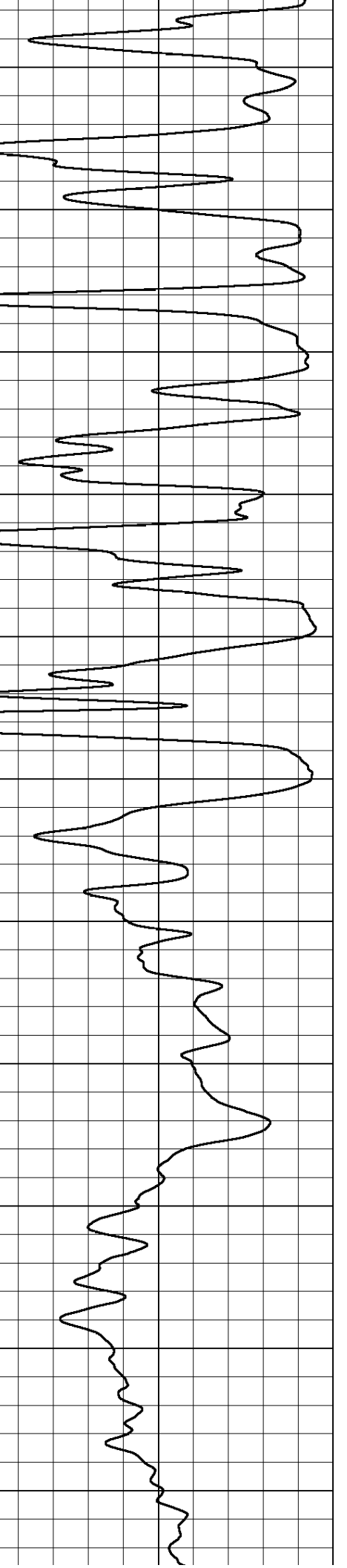
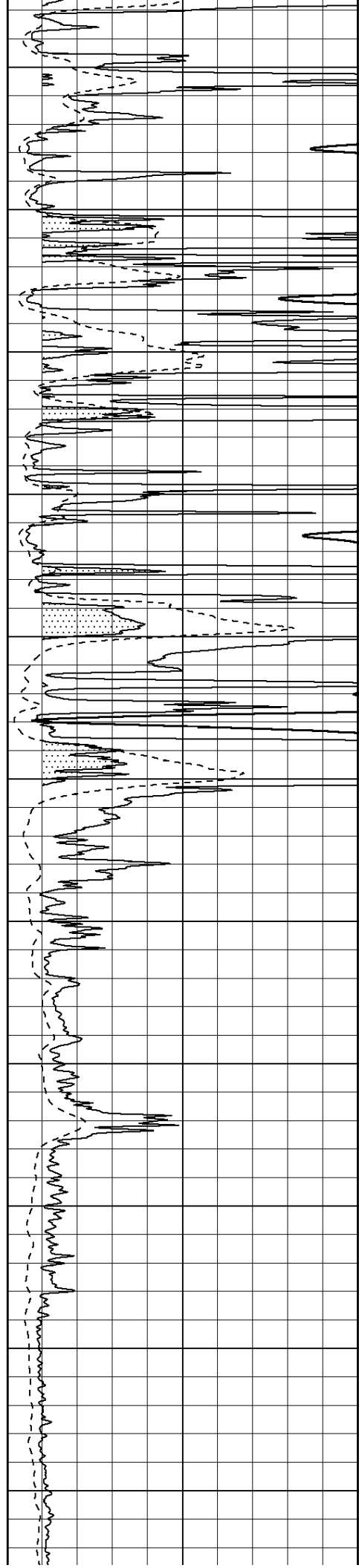
5150

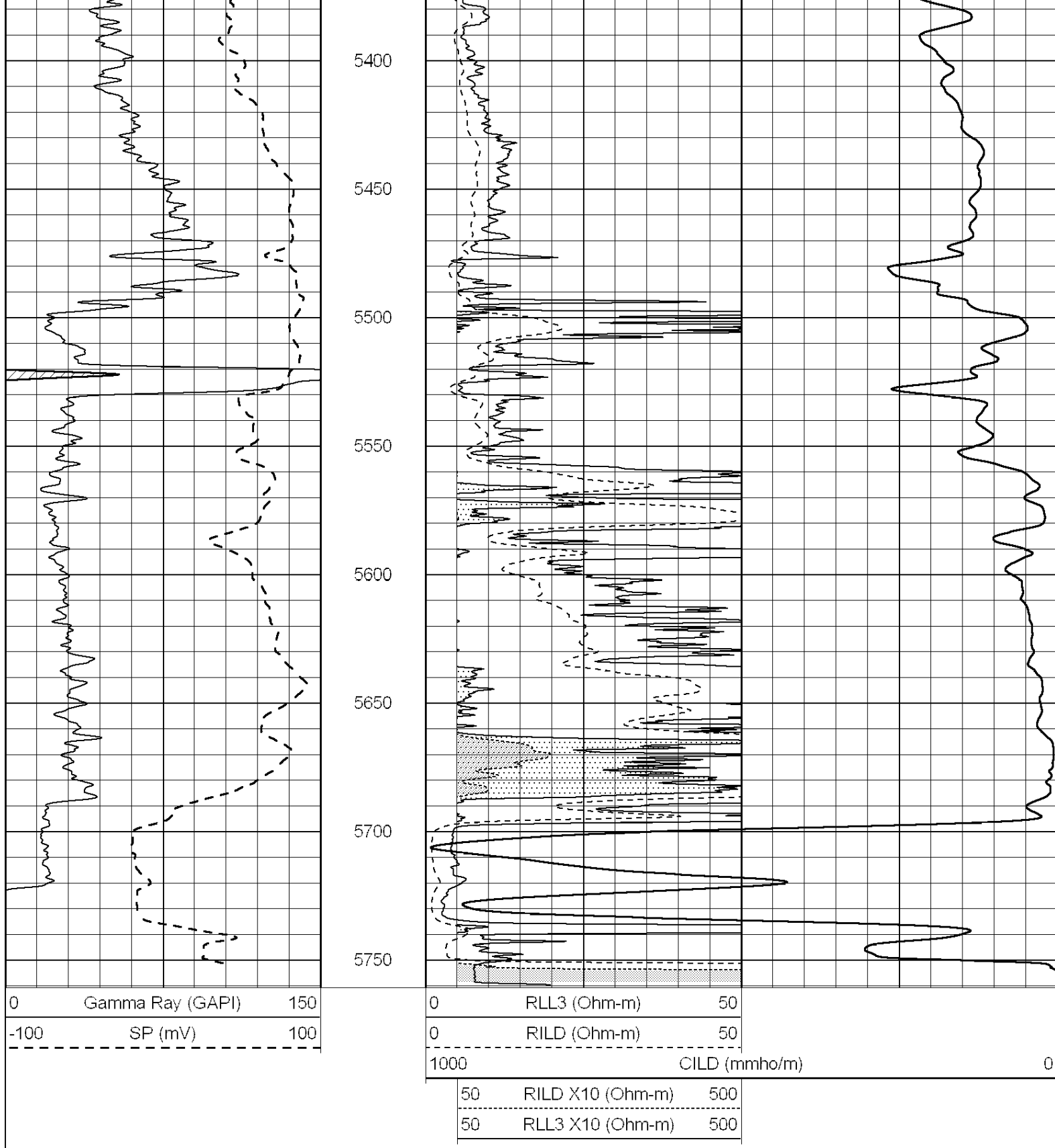
5200

5250

5300

5350



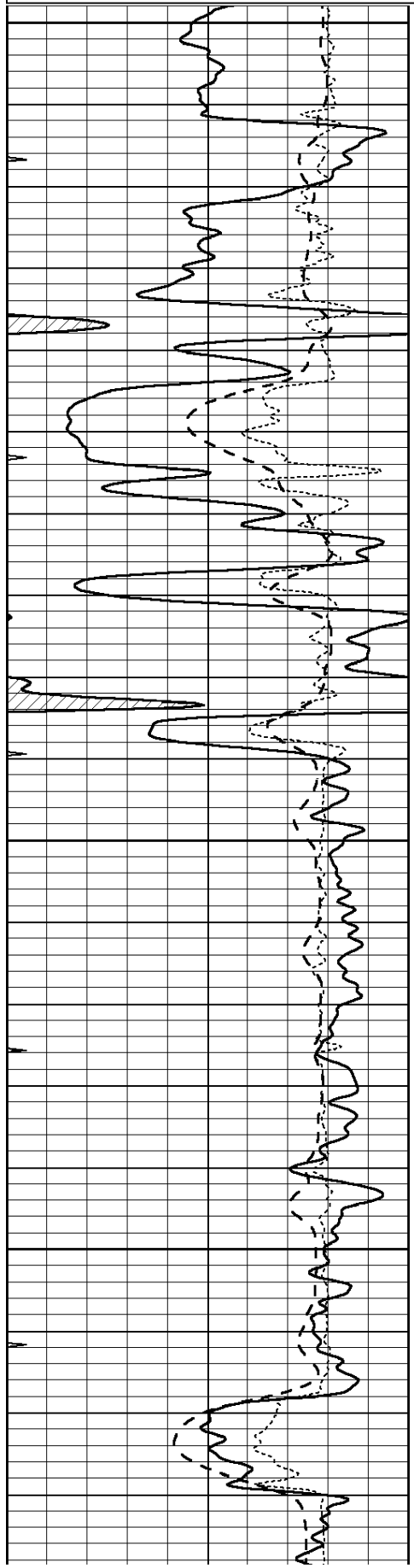


MAIN SECTION

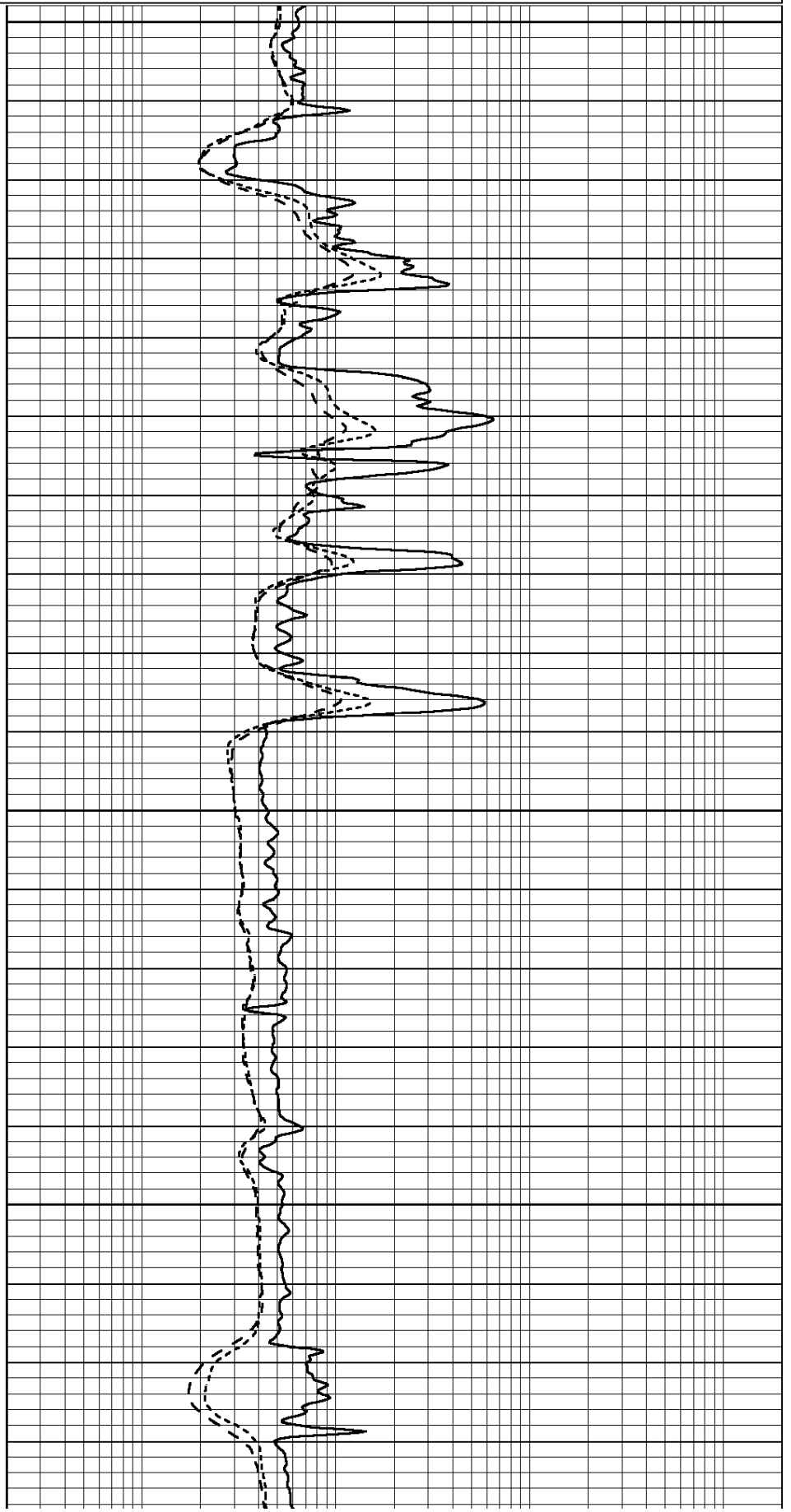
Database File: 22241pe.db
 Dataset Pathname: pass3.8
 Presentation Format: _dil
 Dataset Creation: Fri Jan 24 07:22:26 2014 by Calc SOC 120430
 Charted by: Depth in Feet scaled 1:240

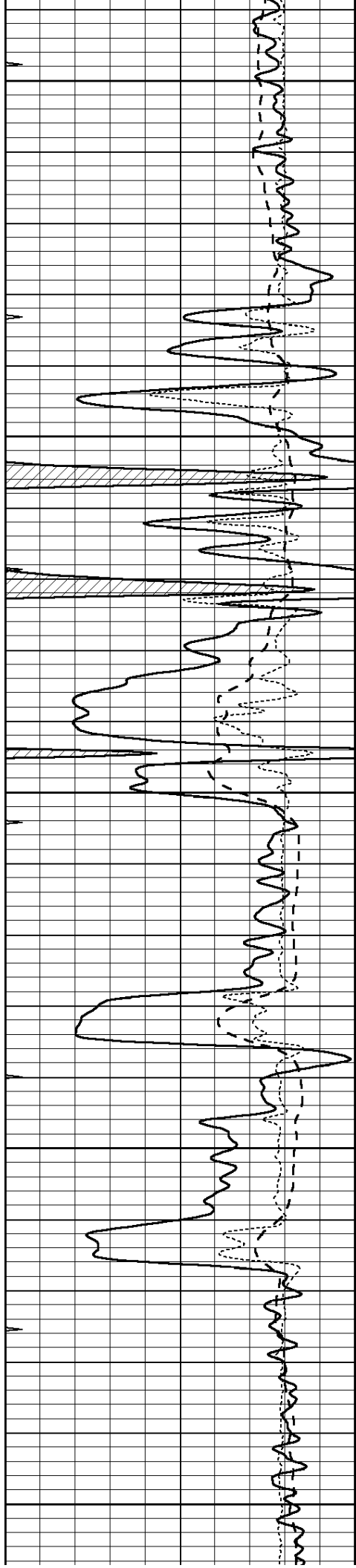
0	GAMMA RAY (GAPI)	150
-100	SP (mV)	100
-250	Rxo/Rt	50
0	MINMK	20

0.2	SHALLOW GUARD (Ohm-m)	2000
0.2	DEEP INDUCTION (Ohm-m)	2000
0.2	MEDIUM INDUCTION (Ohm-m)	2000



3900
3950
4000
4050





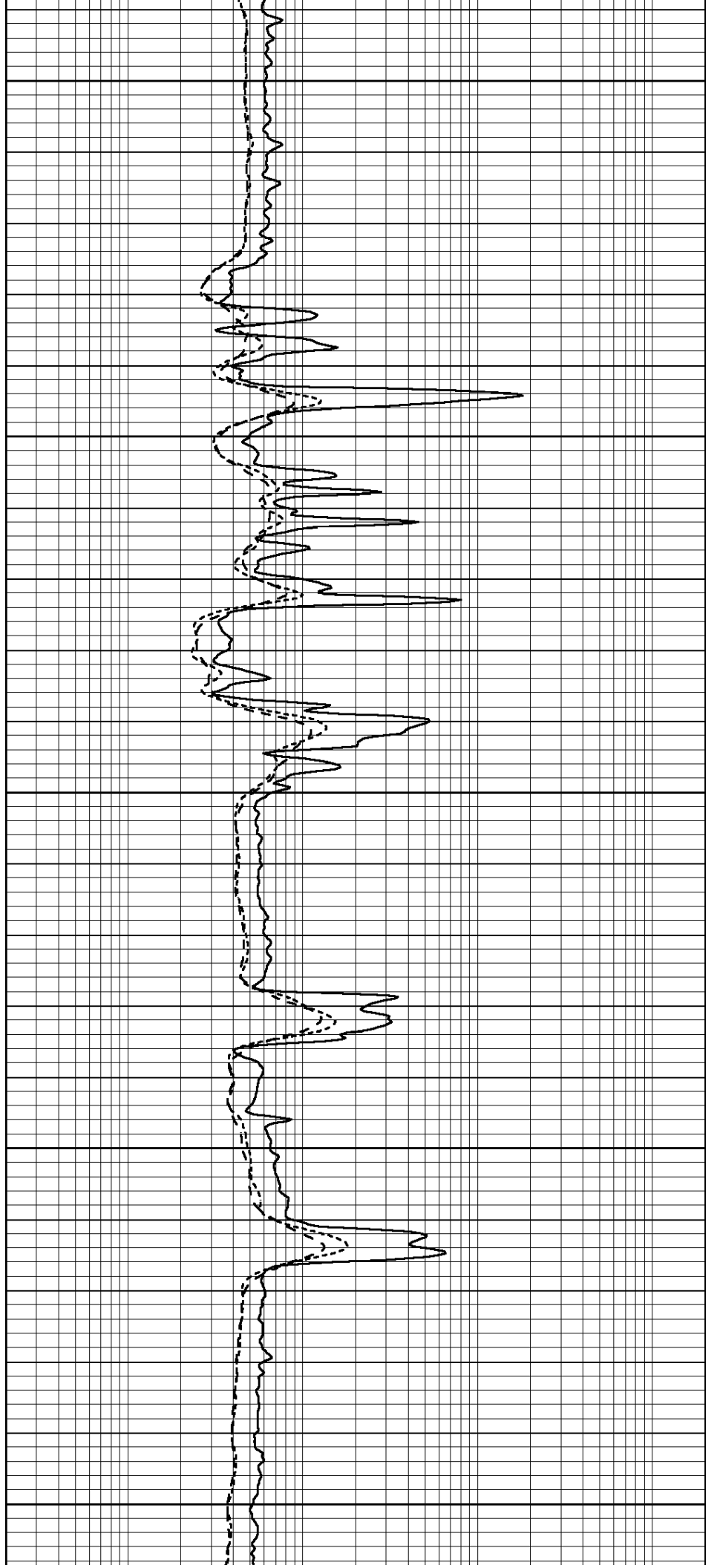
4100

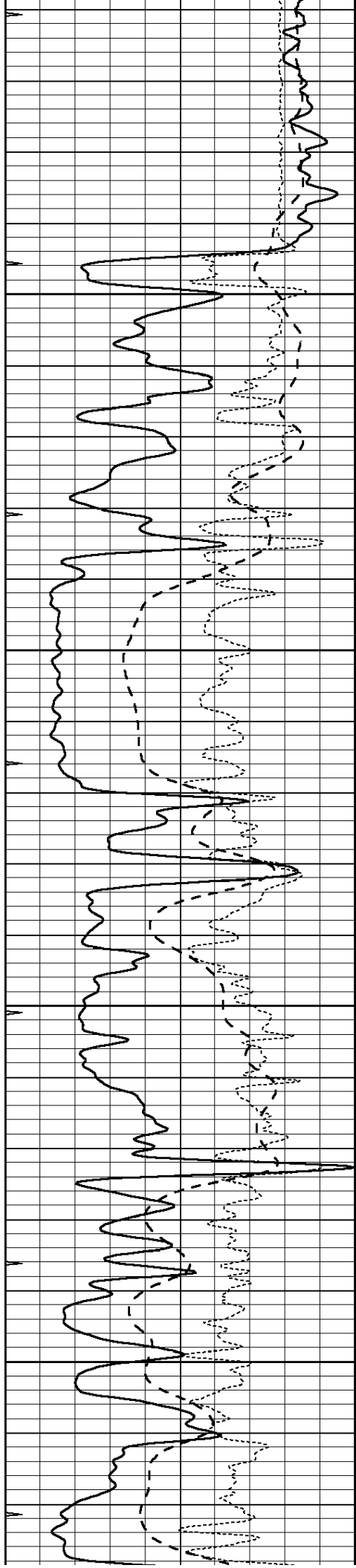
4150

4200

4250

4300



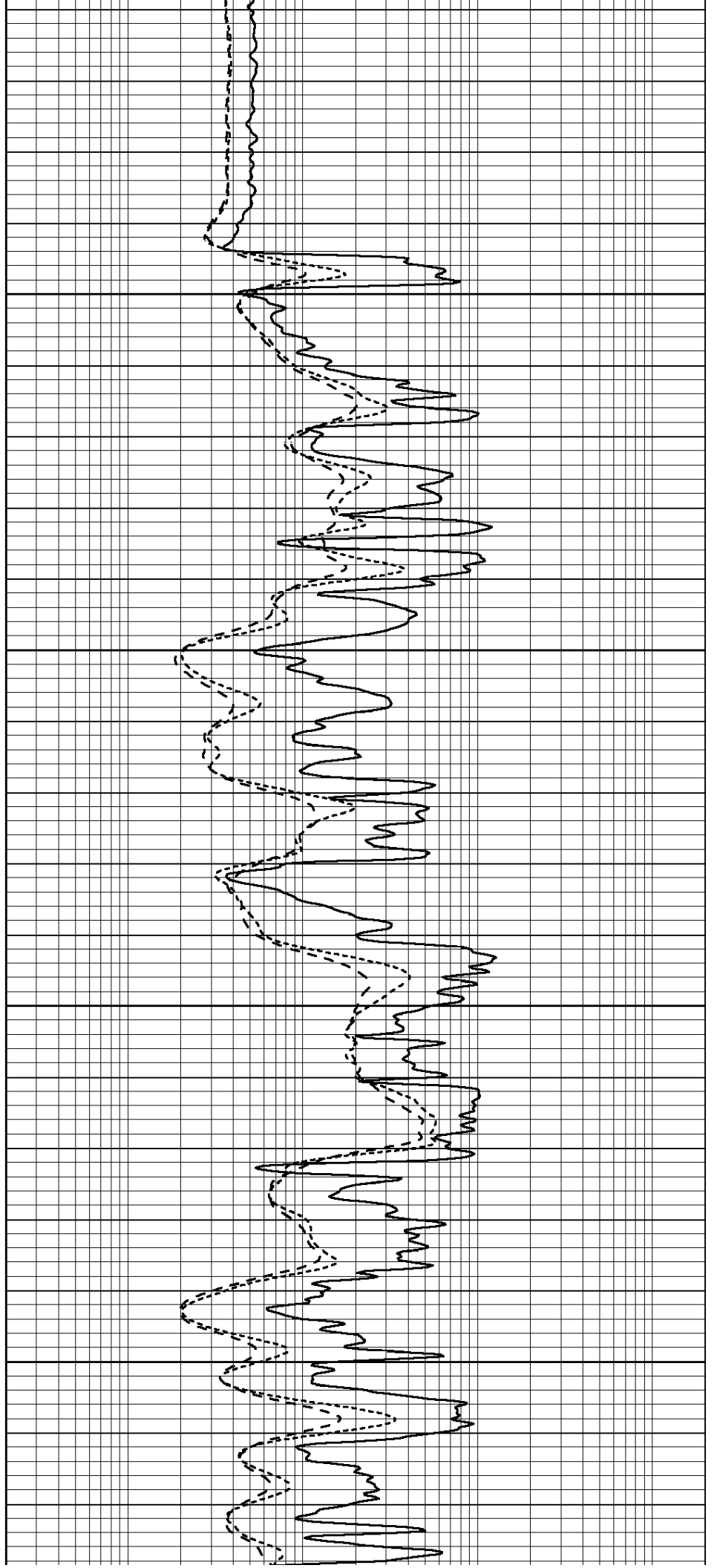


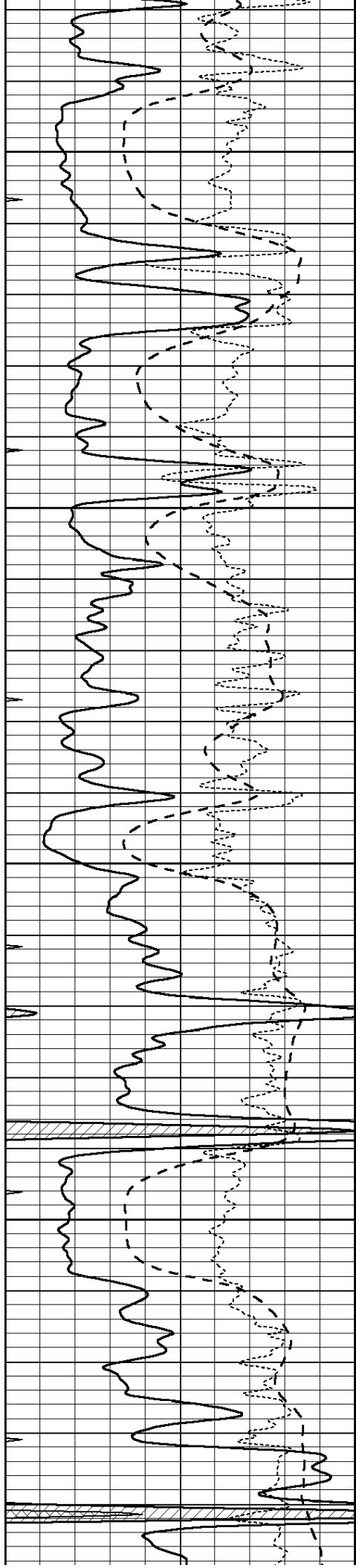
4350

4400

4450

4500



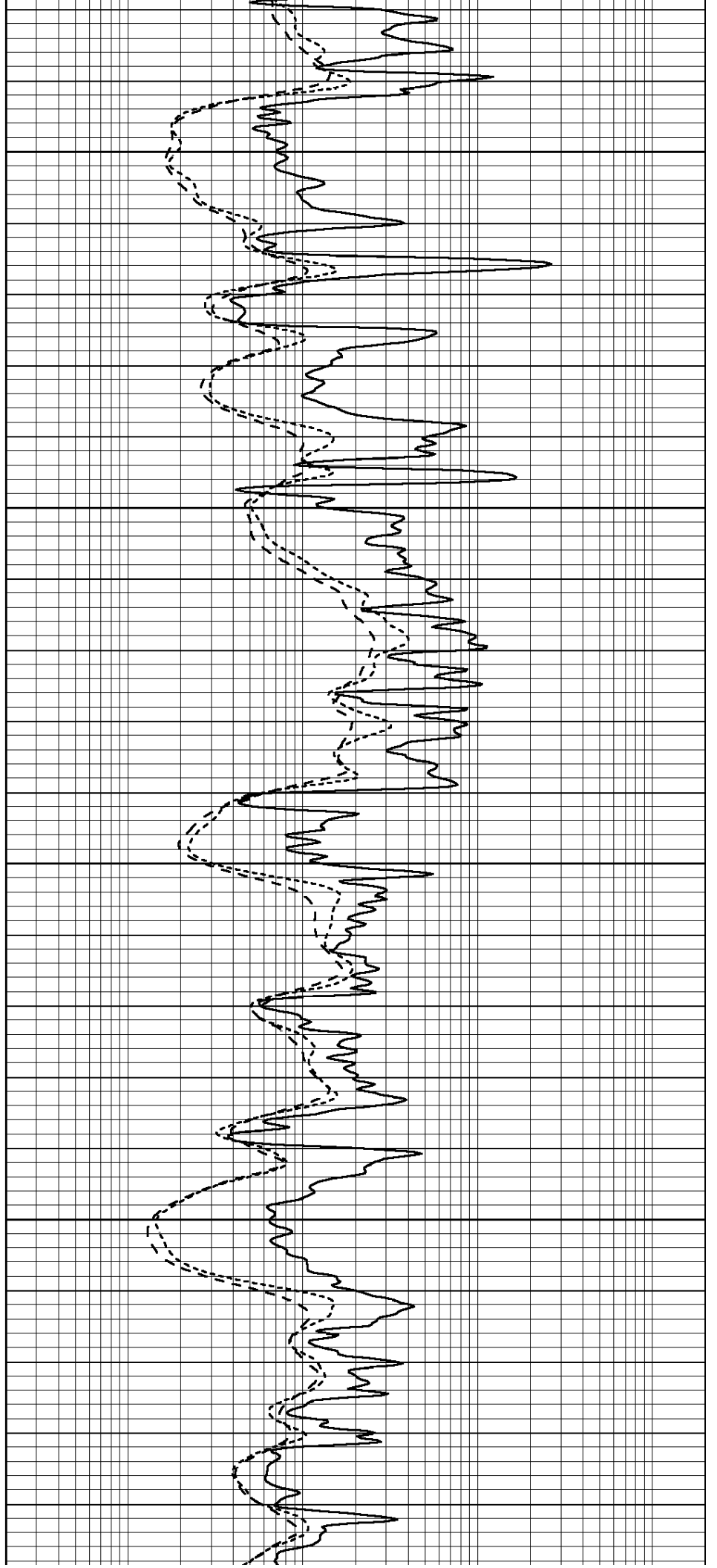


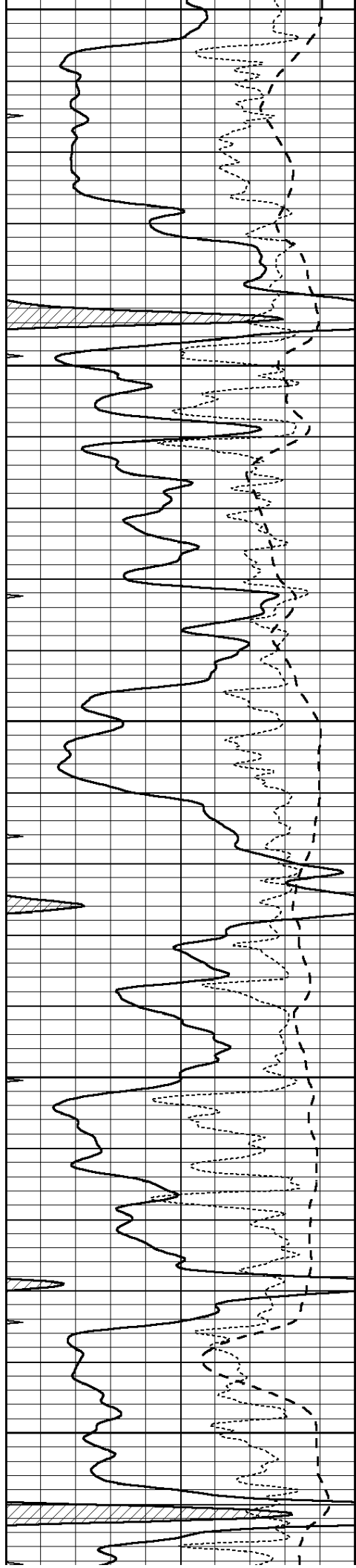
4550

4600

4650

4700





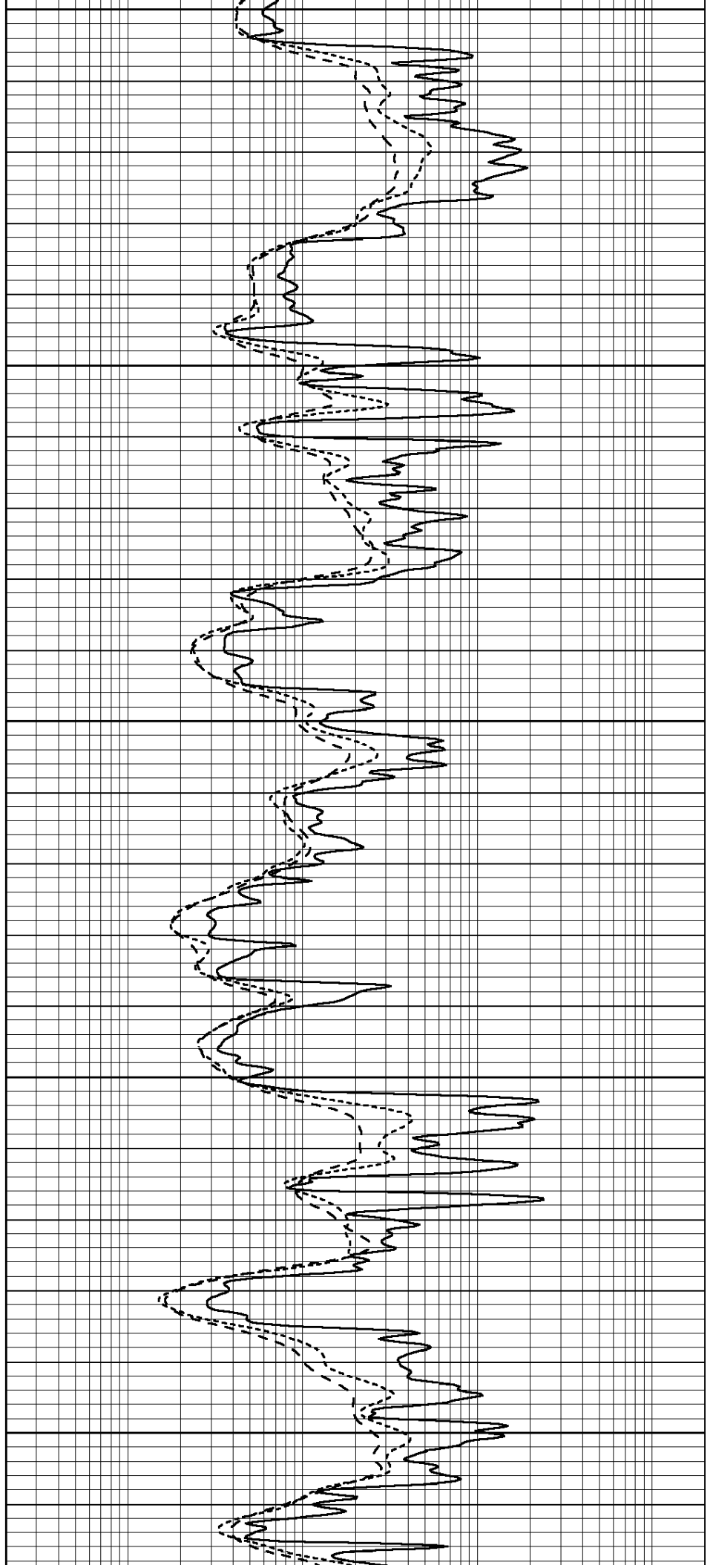
4750

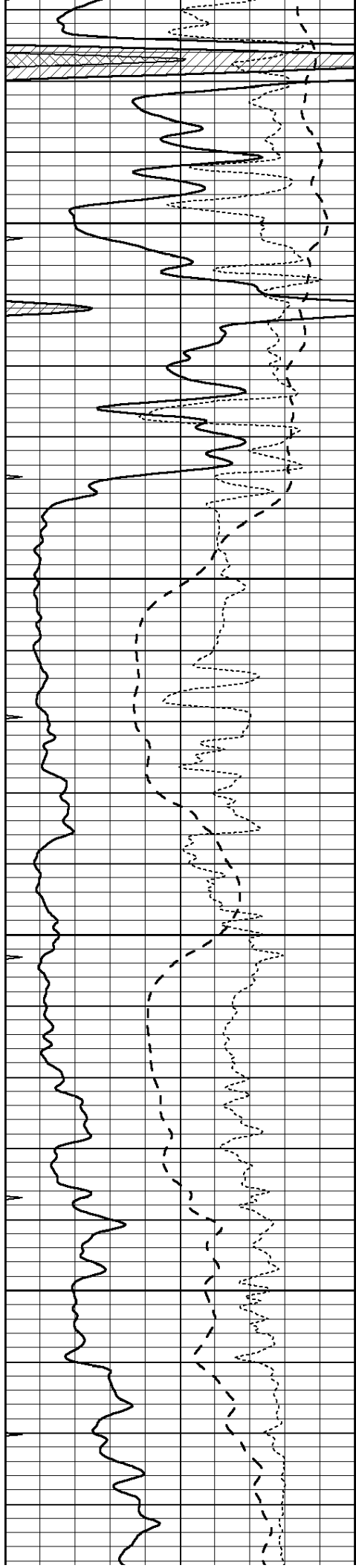
4800

4850

4900

4950



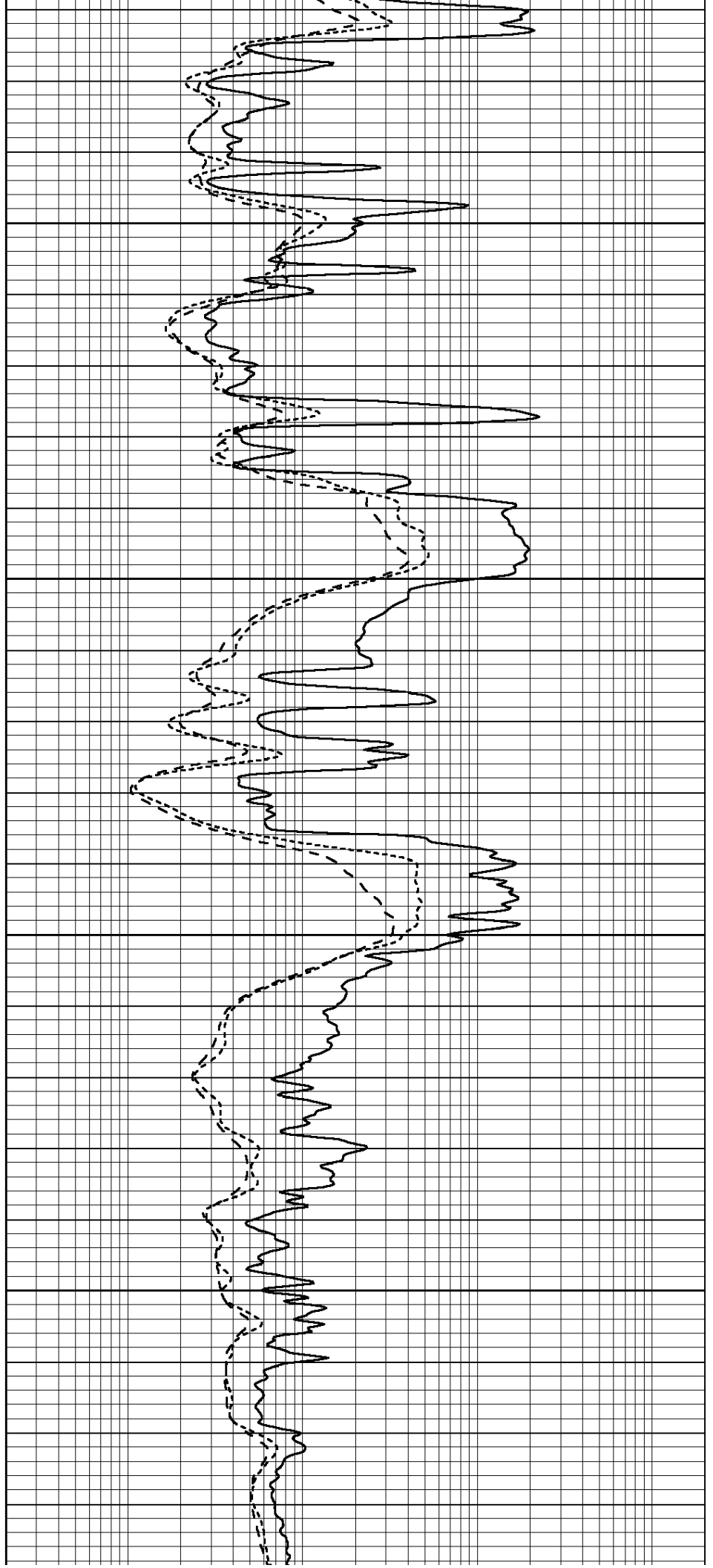


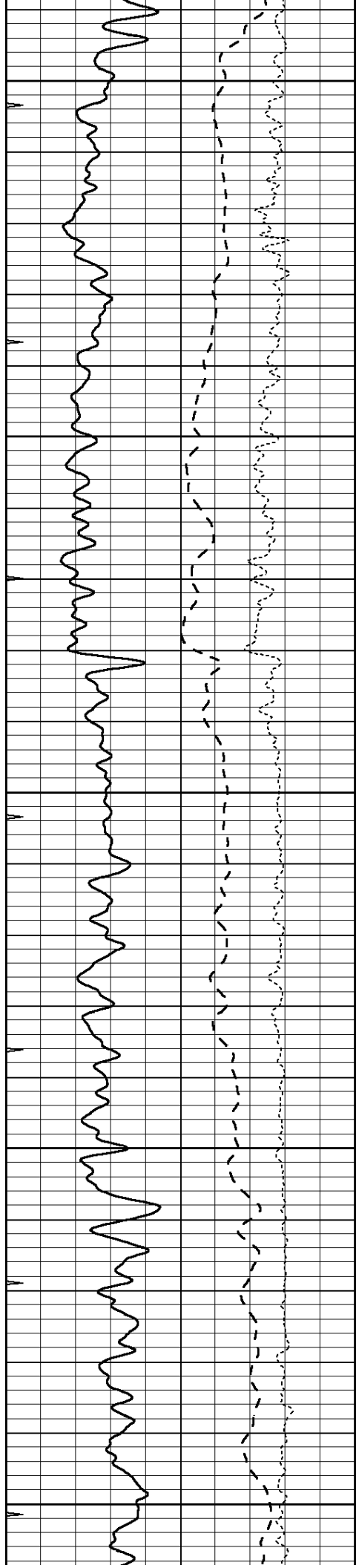
5000

5050

5100

5150





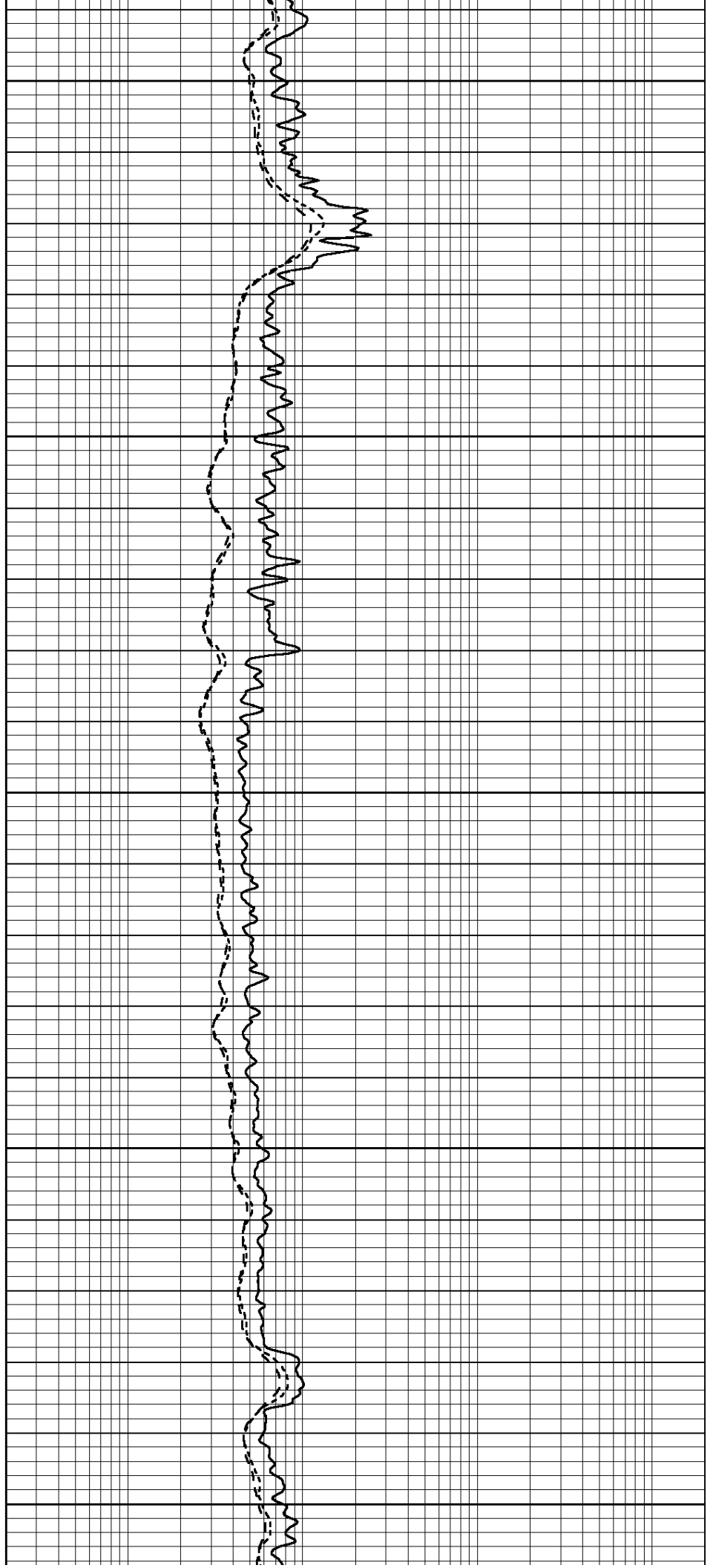
5200

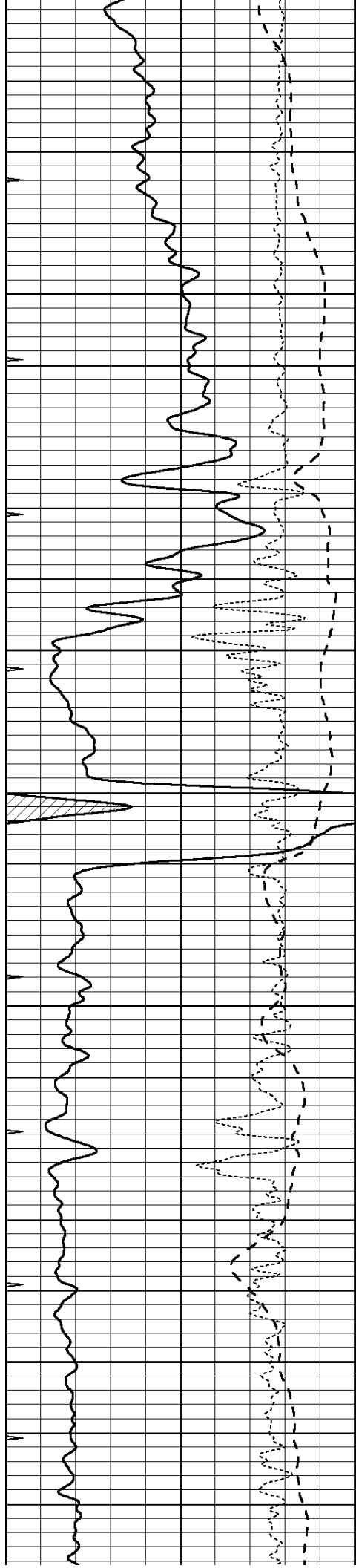
5250

5300

5350

5400



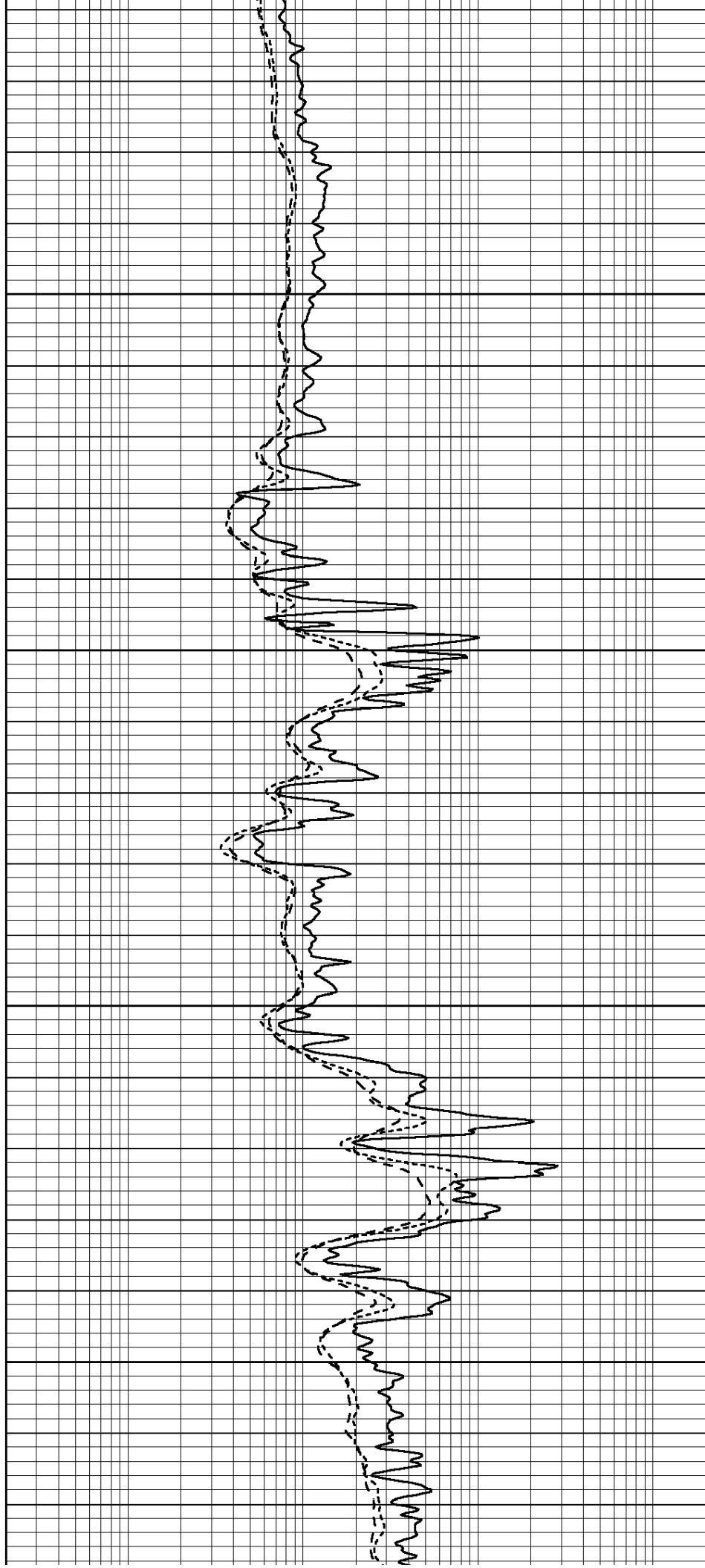


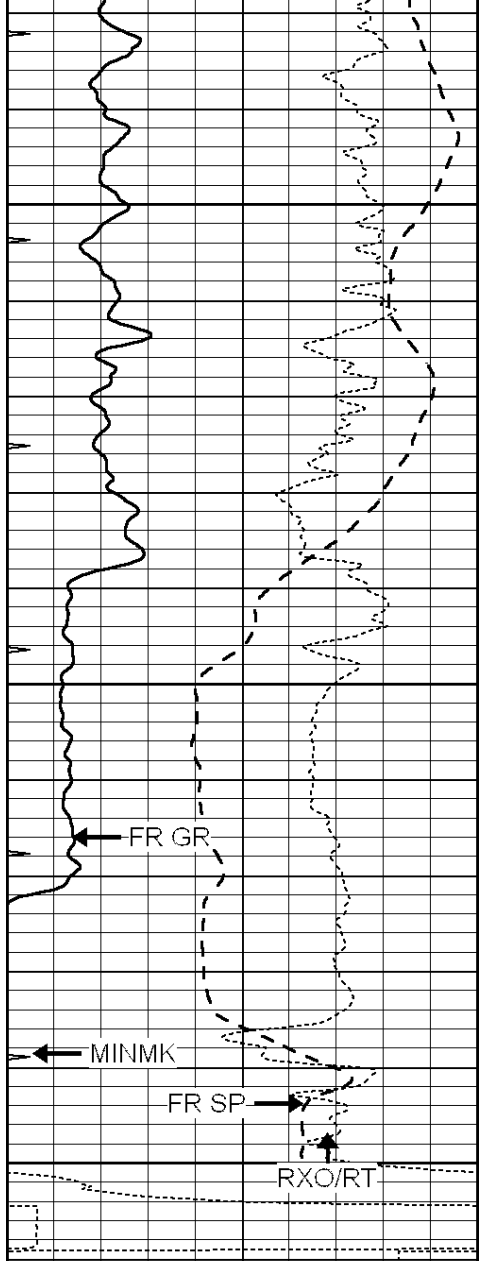
5450

5500

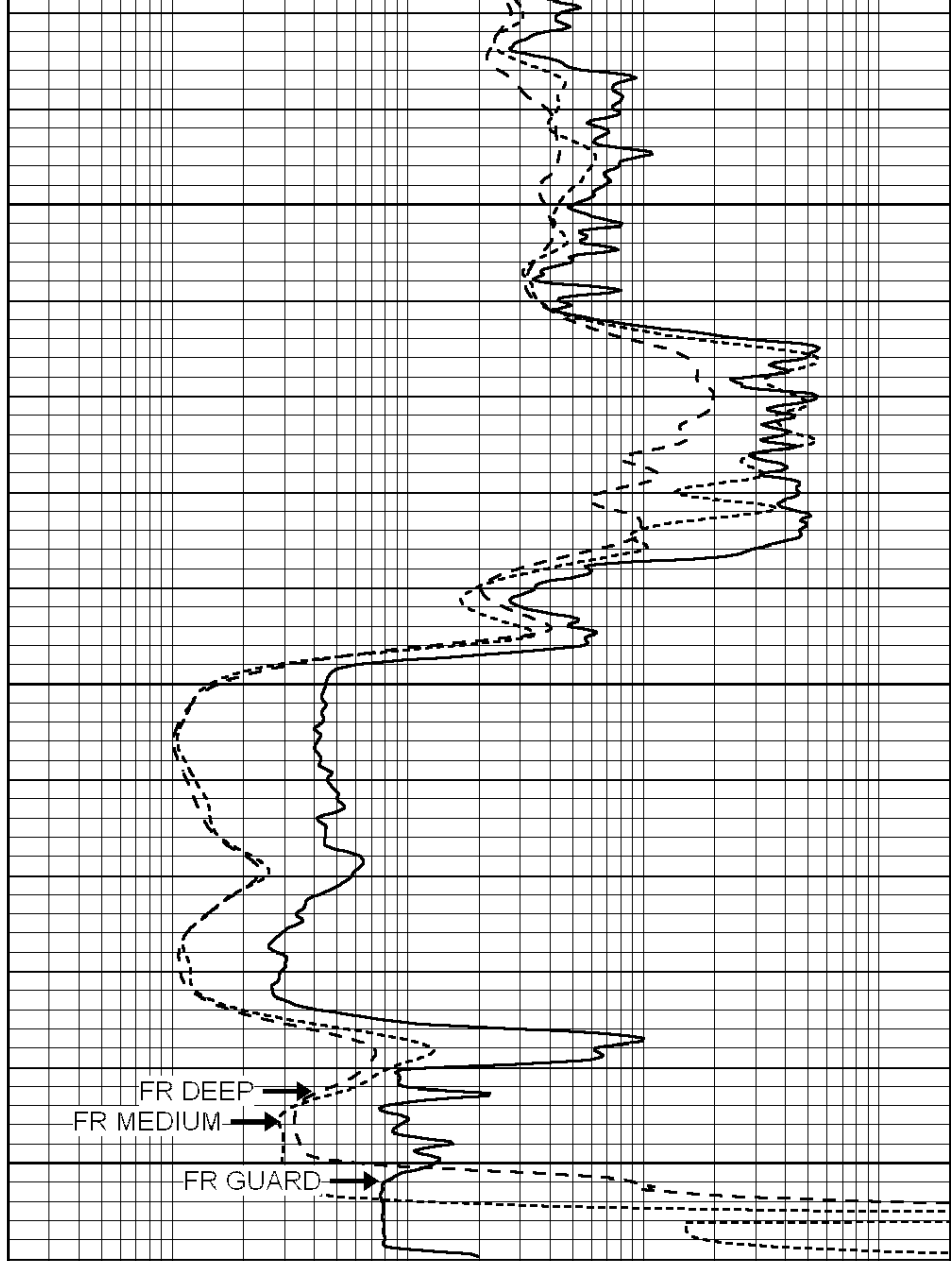
5550

5600





5650
5700
5750
LTD 5754



0	GAMMA RAY (GAPI)	150
-100	SP (mV)	100
-250	Rxo/Rt	50
0	MINMK	20

0.2	SHALLOW GUARD (Ohm-m)	2000
0.2	DEEP INDUCTION (Ohm-m)	2000
0.2	MEDIUM INDUCTION (Ohm-m)	2000

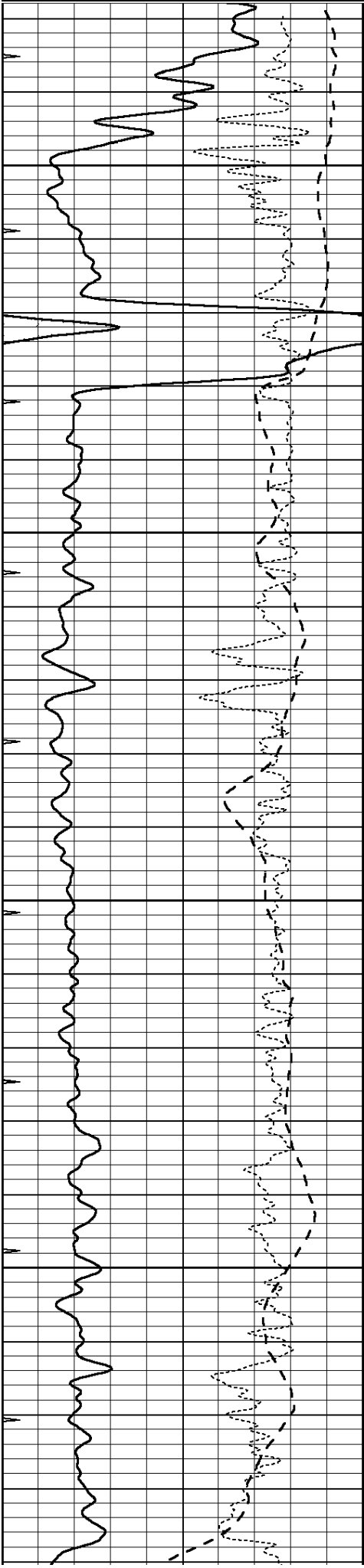


REPEAT SECTION

Database File: 22241pe.db
 Dataset Pathname: pass2.3
 Presentation Format: _dil
 Dataset Creation: Fri Jan 24 07:25:29 2014
 Charted by: Depth in Feet scaled 1:240

0	GAMMA RAY (GAPI)	150
-100	SP (mV)	100
-250	Rxo/Rt	50
0	MINMK	20

0.2	SHALLOW GUARD (Ohm-m)	2000
0.2	DEEP INDUCTION (Ohm-m)	2000
0.2	MEDIUM INDUCTION (Ohm-m)	2000

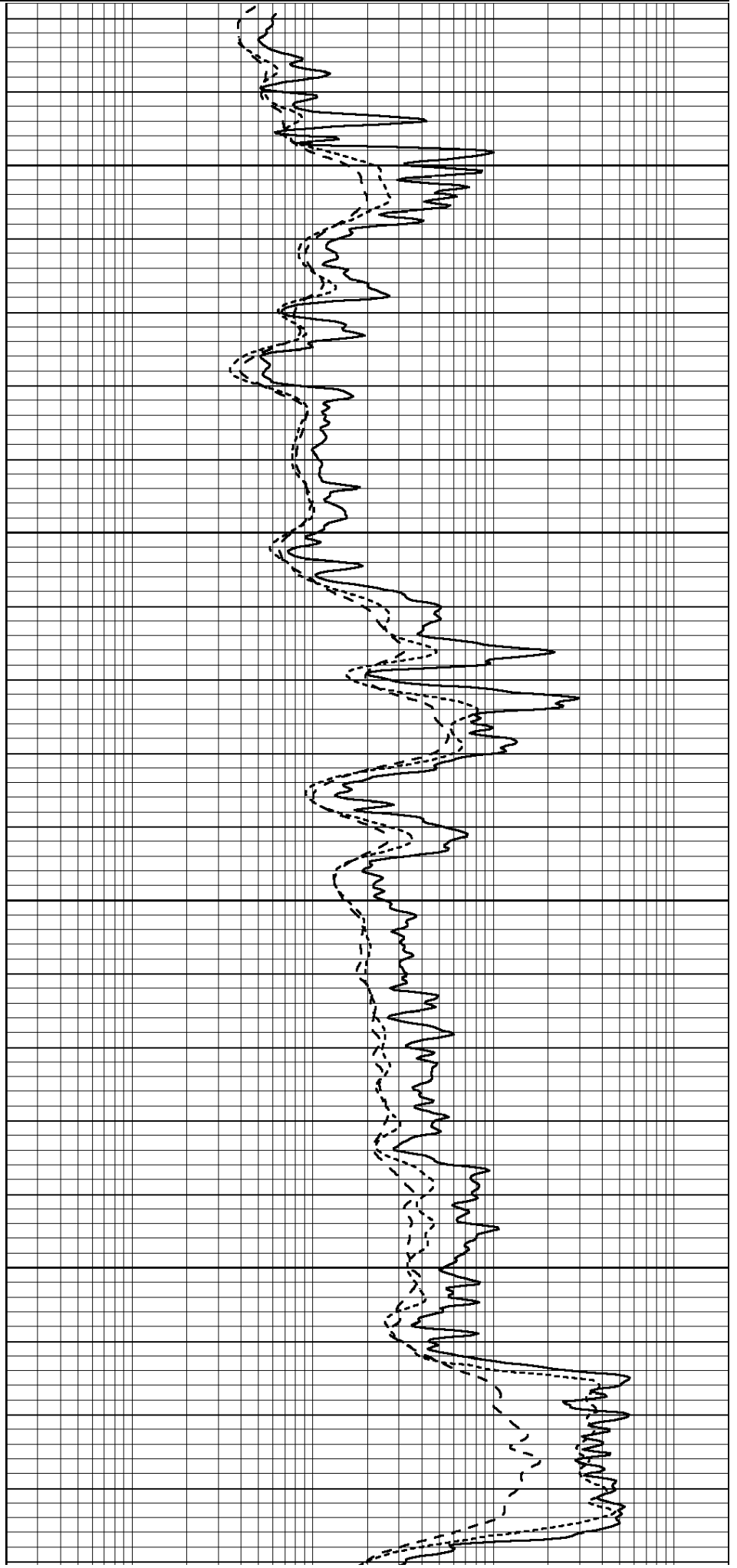


5500

5550

5600

5650

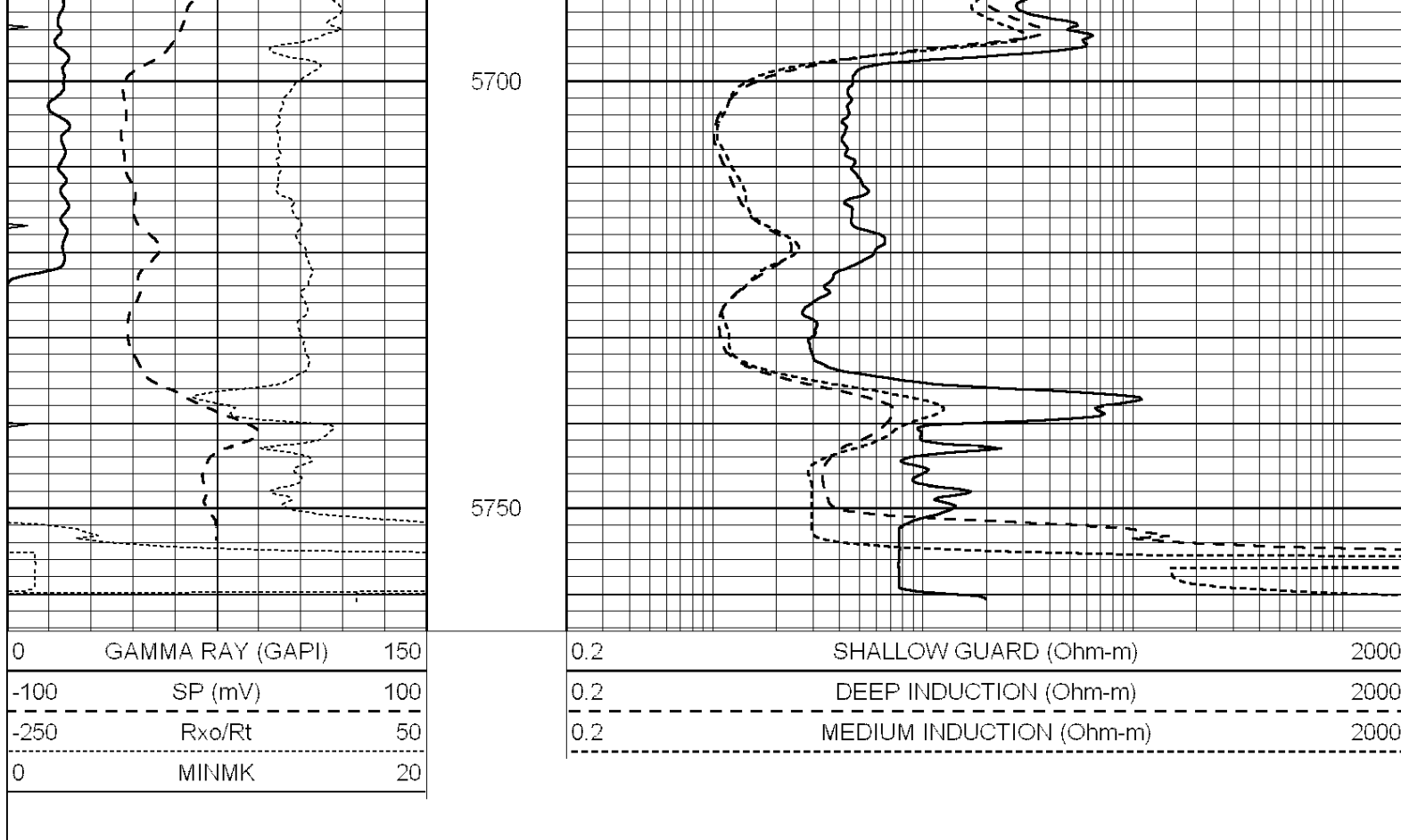


5500

5550

5600

5650



Calibration Report

Database File: 22241pe.db
 Dataset Pathname: pass3.8
 Dataset Creation: Fri Jan 24 07:22:26 2014 by Calc SOC 120430

Dual Induction Calibration Report

Serial-Model: PROBE9-DILG
 Surface Cal Performed: Sun Jan 19 14:29:10 2014
 Downhole Cal Performed: Mon Jul 28 12:02:56 2008
 After Survey Verification Performed: Mon Jul 28 12:02:56 2008

Surface Calibration

Loop:	Readings			References			Results	
	Air	Loop		Air	Loop		m	b
Deep	-0.014	0.629	V	0.000	400.000	mmho/m	650.000	-3.000
Medium	0.039	0.728	V	0.000	464.000	mmho/m	660.000	-9.500
Internal:	Zero	Cal		Zero	Cal		m	b
Deep	0.011	0.610	V	0.000	400.000	mmho/m	667.135	-7.256
Medium	0.005	0.712	V	0.000	464.000	mmho/m	655.677	-3.102

Downhole Calibration

	Readings			References			Results	
	Zero	Cal		Zero	Cal		m'	b'
Deep	0.000	0.000	mmho/m	14.508	388.384	mmho/m	1.000	0.000
Medium	0.000	0.000	mmho/m	166.367	504.400	mmho/m	1.000	0.000
LL3		7.500	V		1400.000	Ohm-m		
		0.000	V		20.000	Ohm-m		
		-7.200	V		4000.000	mmho-m		

	Readings			Targets			Results	
	Zero	Cal		Zero	Cal		m'	b'
Deep	0.000	0.000	mmho/m	0.000	0.000	mmho/m	0.000	0.000
Medium	0.000	0.000	mmho/m	0.000	0.000	mmho/m	0.000	0.000
LL3		1.000	Ohm-m		1.000	Ohm-m		
		0.000	Ohm-m		0.000	Ohm-m		
		1.000	mmho-m		1.000	mmho-m		

Litho Density Calibration Report
Serial: 004N Model: PRB

Master Calibration

Performed Mon Jun 03 09:36:56 2013

	Background	Magnesium	Aluminum	Sandstone	
Window 1	1417.6	10391.4	3464.6	11537.5	cps
Window 2	1295.0	8959.7	3050.1	9816.4	cps
Window 3	1105.1	5464.2	2051.0	5838.8	cps
Window 4	315.0	317.7	312.9	319.8	cps
Long Space	0.0	7664.6	1755.0	8521.3	cps
Short Space	1.8	1582.4	1040.8	1699.4	cps
Rho		1.7100	2.5900	1.3800	g/cc
Pe		0.0000	2.5700	1.5500	
Rib Angle	: 44.1	Rib Slope	: 0.970	Density/Spine Ratio	: 0.574
Spine Angle	: 74.1	Spine Slope	: 3.519	Spine Intercept	: -17.0

Before Survey Verification

Performed Wed Dec 31 18:00:00 1969

Window 1	0.0	0.0	0.0	0.0	cps
Window 2	0.0	0.0	0.0	0.0	cps
Window 3	0.0	0.0	0.0	0.0	cps
Window 4	0.0	0.0	0.0	0.0	cps
Long Space	0.0	0.0	0.0	0.0	cps
Short Space	0.0	0.0	0.0	0.0	cps
Measured Rho		0.0000	0.0000	0.0000	g/cc
Measured Correction		0.0000	0.0000	0.0000	g/cc
Measured Pe			0.0000	0.0000	

After Survey Verification

Performed Wed Dec 31 18:00:00 1969

Window 1	0.0	0.0	0.0	0.0	cps
Window 2	0.0	0.0	0.0	0.0	cps
Window 3	0.0	0.0	0.0	0.0	cps
Window 4	0.0	0.0	0.0	0.0	cps
Long Space	0.0	0.0	0.0	0.0	cps
Short Space	0.0	0.0	0.0	0.0	cps
Measured Rho		0.0000	0.0000	0.0000	g/cc
Measured Correction		0.0000	0.0000	0.0000	g/cc
Measured Pe			0.0000	0.0000	

Compensated Neutron Calibration Report

Serial Number: 070808
Tool Model: Probe

PRE-SURVEY VERIFICATION

Detector	Readings	Measured	Target
----------	----------	----------	--------

Short Space
Long Space

cps
cps

pu

pu

POST-SURVEY VERIFICATION

Detector

Readings

Measured

Target

Short Space
Long Space

cps
cps

pu

pu

Gamma Ray Calibration Report

Serial Number:

070559

Tool Model:

OPEN_GR

Performed:

Thu Dec 19 09:01:02 2013

Calibrator Value:

1.0

GAPI

Background Reading:

0.0

cps

Calibrator Reading:

1.0

cps

Sensitivity:

0.2800

GAPI/cps