



**COMPLETION
& PRODUCTION
SERVICES CO.**

**MICRO
LOG**

Company CASTELLI EXPLORATION, INC.
Well GREGG "A" #2-19
Field SHIMER
County COMANCHE
State KANSAS

Company CASTELLI EXPLORATION, INC.
Well GREGG "A" #2-19
Field SHIMER
County COMANCHE State KANSAS

Location: API # : 15-033-21743-0000
2130' FSL & 3400' FEL
SE - NW - NE - SW
SEC 19 TWP 33S RGE 16W
Permanent Datum GROUND LEVEL Elevation 1836
Log Measured From KELLY BUSHING 13' A.G.L.
Drilling Measured From KELLY BUSHING
Other Services
CDL/CNL/PE
DIL
Elevation
K.B. 1849
D.F. 1847
G.L. 1836

| | |
|------------------------------|----------------|
| Date | 1/16/14 |
| Run Number | TWO |
| Depth Driller | 5670 |
| Depth Logger | 5674 |
| Bottom Logged Interval | 5672 |
| Top Log Interval | 3900 |
| Casing Driller | 13 3/8" @ 323' |
| Casing Logger | 322 |
| Bit Size | 7 7/8" |
| Type Fluid in Hole | CHEMICAL MUD |
| Density / Viscosity | 9.2/50 |
| pH / Fluid Loss | 8.5/8.8 |
| Source of Sample | FLOWLINE |
| Rim @ Meas. Temp | .900 @ 79F |
| Rmf @ Meas. Temp | .675 @ 79F |
| Rmc @ Meas. Temp | 1.08 @ 78F |
| Source of Rmf / Rmc | MEASUREMENT |
| Rim @ BHT | .538 @ 131F |
| Time Circulation Stopped | 6 HOURS |
| Time Logger on Bottom | 3:30 A.M. |
| Maximum Recorded Temperature | 131F |
| Equipment Number | 4854 |
| Location | HAYS, KANSAS |
| Recorded By | JEFF LUEBBERS |
| Witnessed By | TOM CASTELLI |
| | RICK POPP |

<<< Fold Here >>>

All interpretations are opinions based on inferences from electrical or other measurements and we cannot and do not guarantee the accuracy or correctness of any interpretation, and we shall not, except in the case of gross or willful negligence on our part, be liable or responsible for any loss, costs, damages, or expenses incurred or sustained by anyone resulting from any interpretation made by any of our officers, agents or employees. These interpretations are also subject to our general terms and conditions set out in our current Price Schedule.

Comments

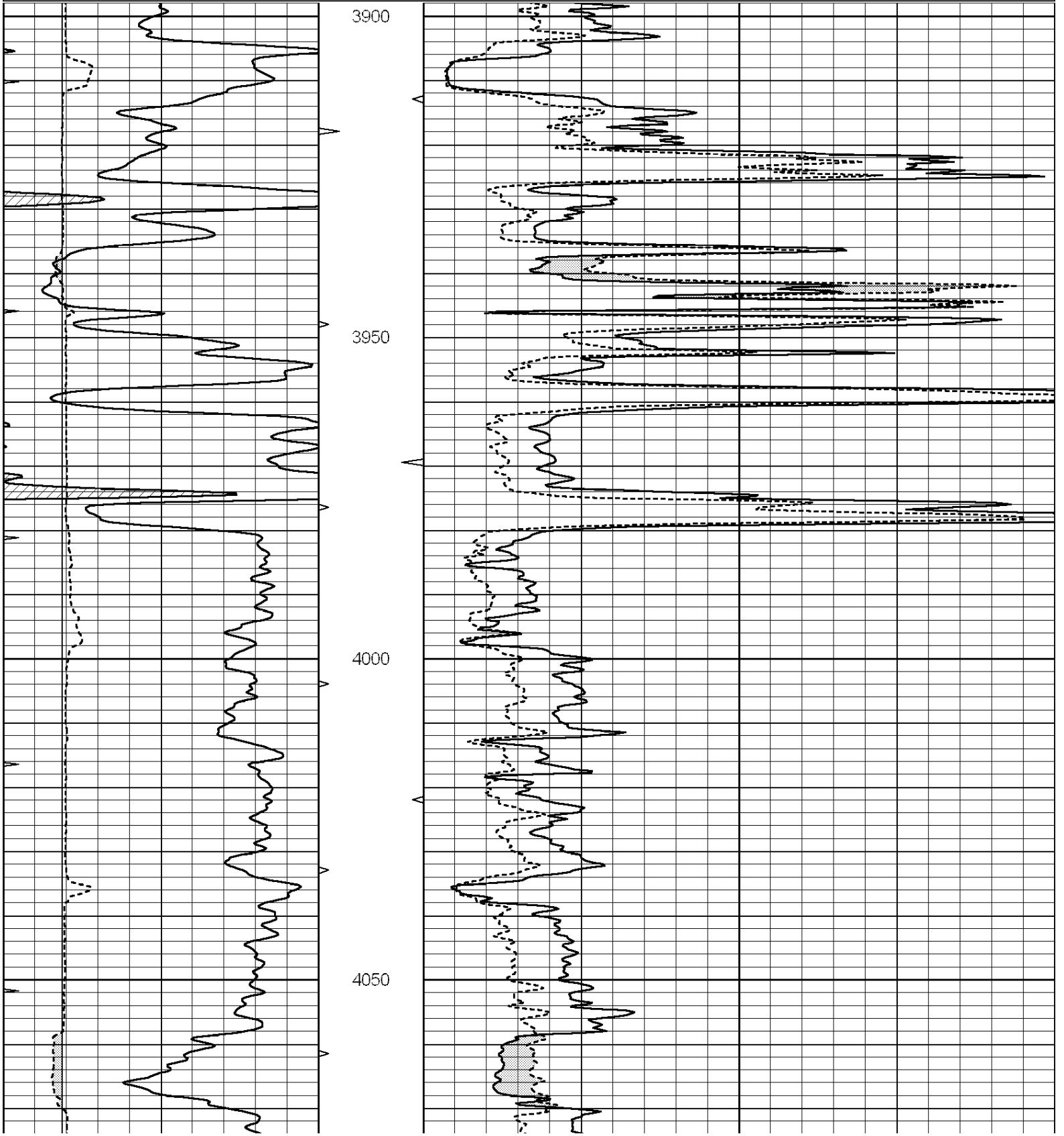
THANK YOU FOR USING "NABORS" HAYS, KANSAS (785) 628-6395
DIRECTIONS
COLDWATER, KS. 9E. ON HWY 160 TO (MM #193)"RD.22", 4S. TO STOP SIGN, 2E. TO OPEN RANGE, 4
S. & E. TO WHITE METAL BUILDING, 2S. INTO, VEER WEST

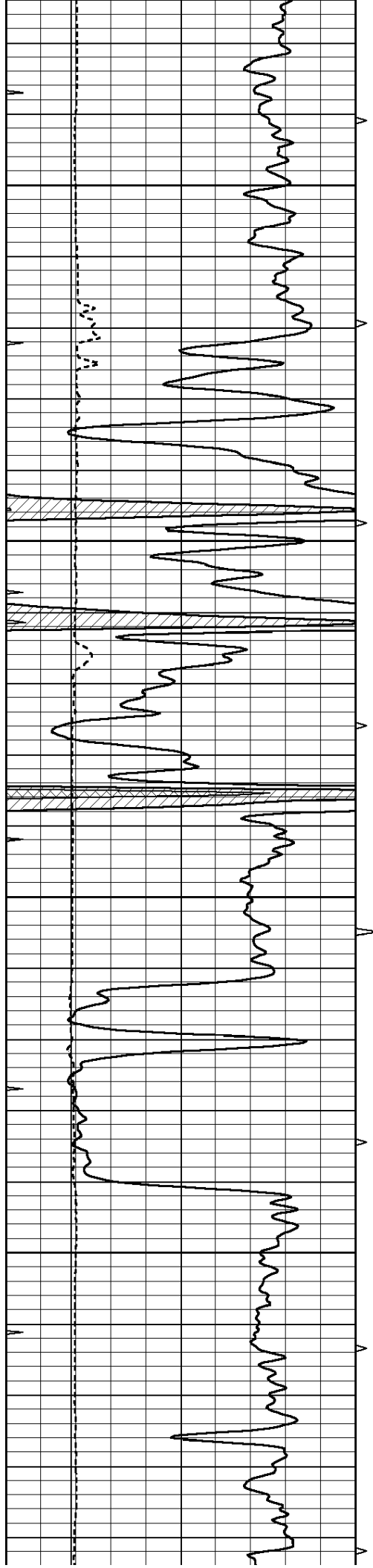


MAIN SECTION

Database File: 22235pe.db
 Dataset Pathname: pass6.2
 Presentation Format: micro
 Dataset Creation: Thu Jan 16 08:14:19 2014 by Calc SOC 120430
 Charted by: Depth in Feet scaled 1:240

| | | | | | | |
|---|------------------|-----|----------|----|----------------|----|
| 0 | GAMMA RAY (GAPI) | 150 | ABHV | 0 | MEL1.5 (Ohm-m) | 40 |
| 6 | CALIPER (in) | 16 | 10 (ft3) | 0 | MEL2.0 (Ohm-m) | 40 |
| 0 | MINMK | 20 | TBHV | | | |
| | | | 0 (ft3) | 10 | | |



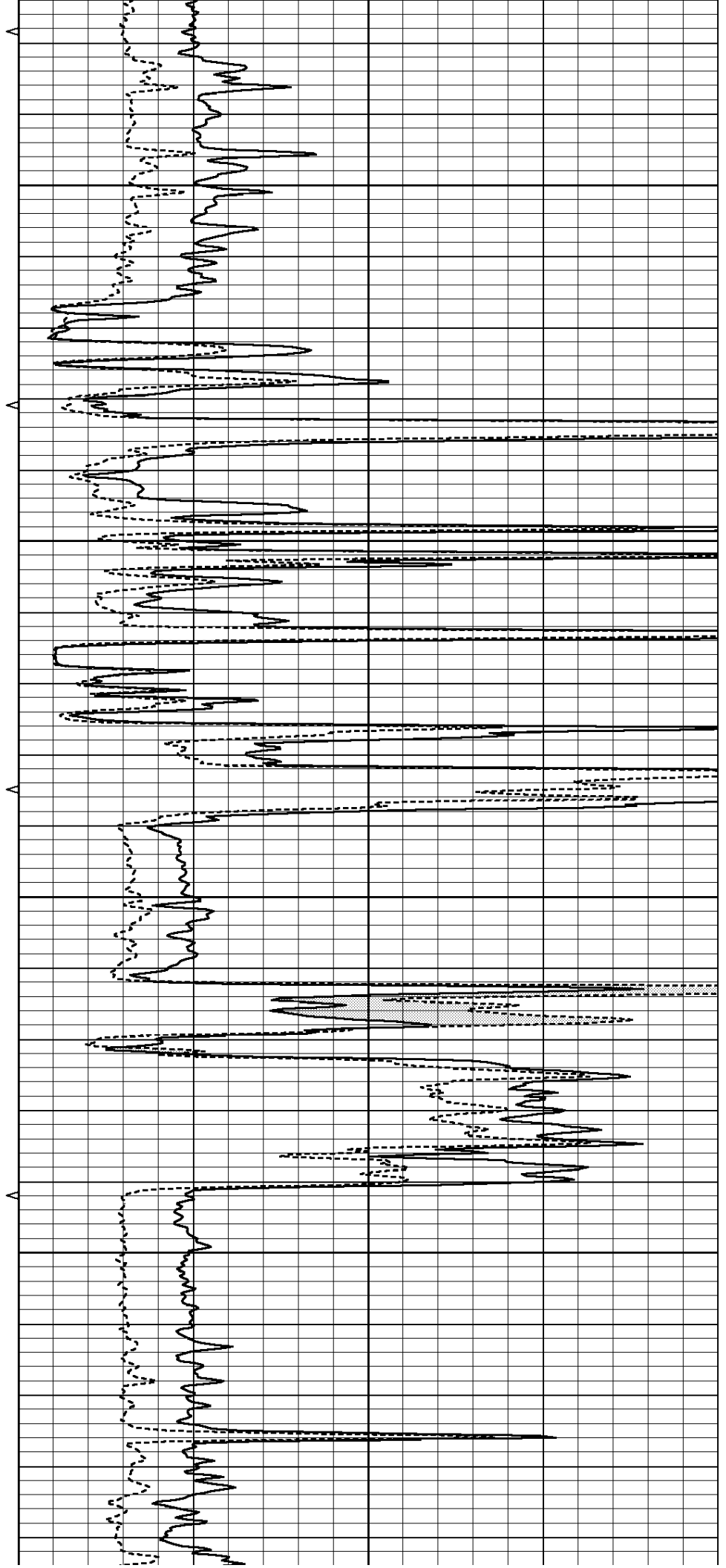


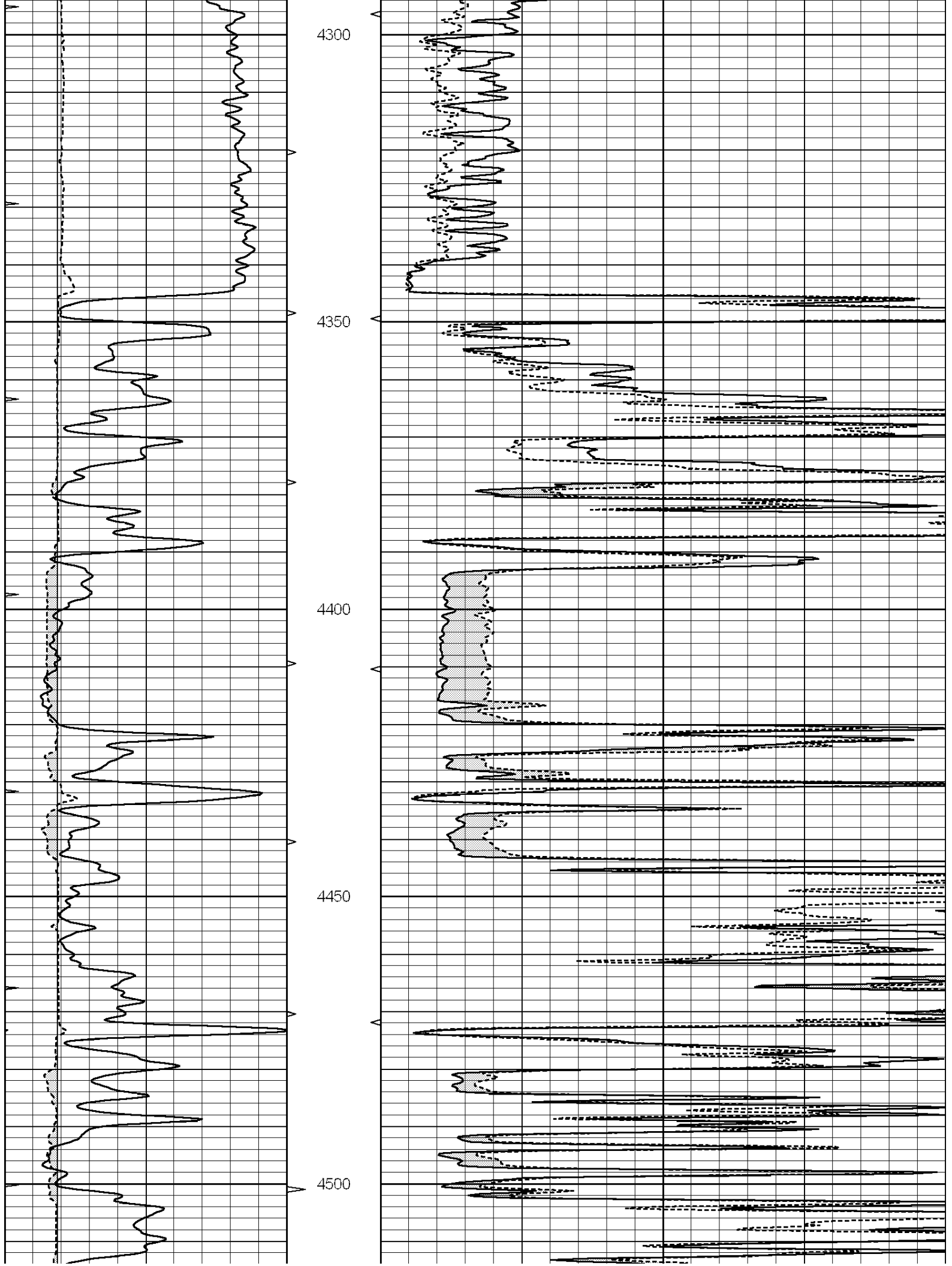
4100

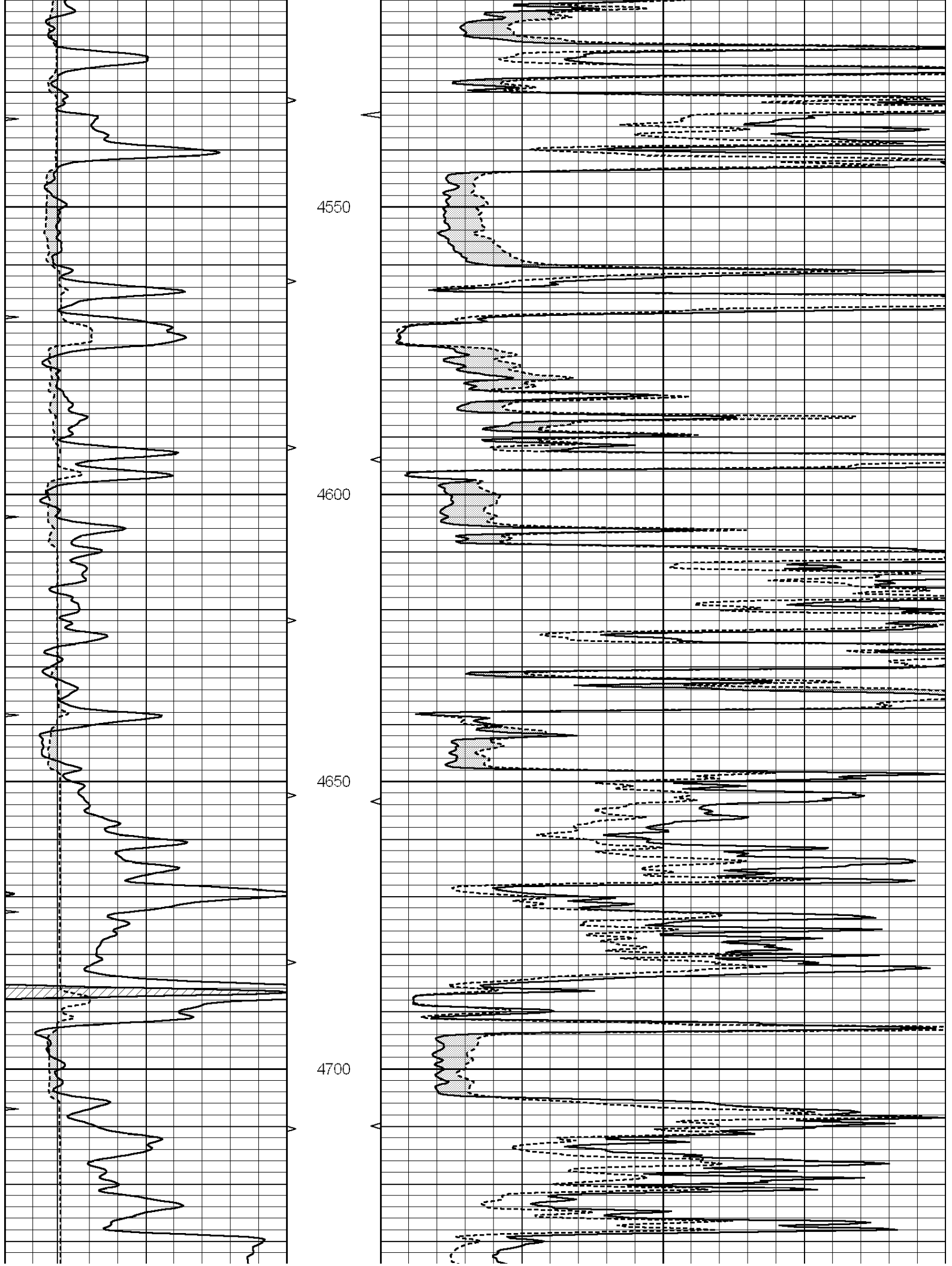
4150

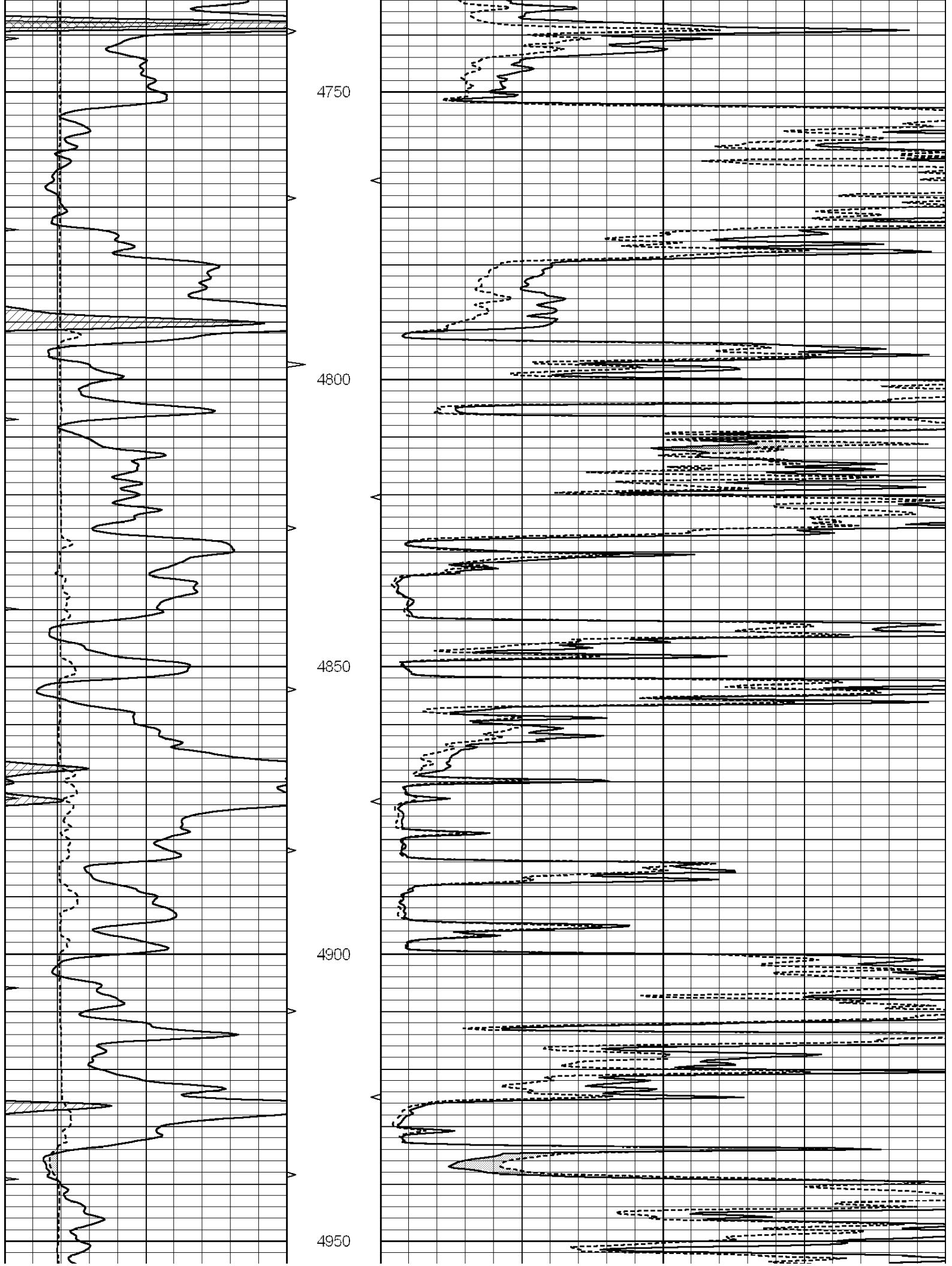
4200

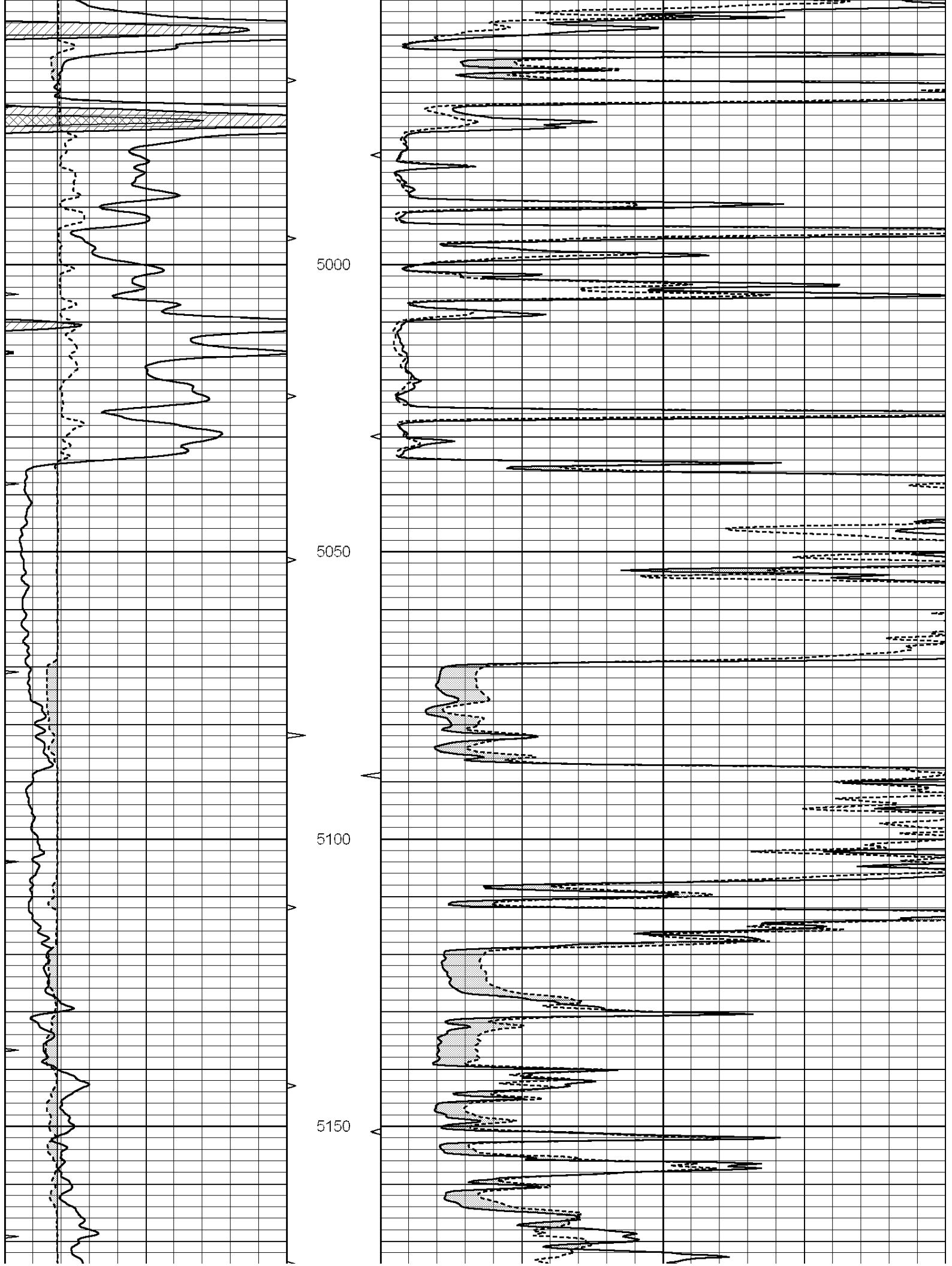
4250

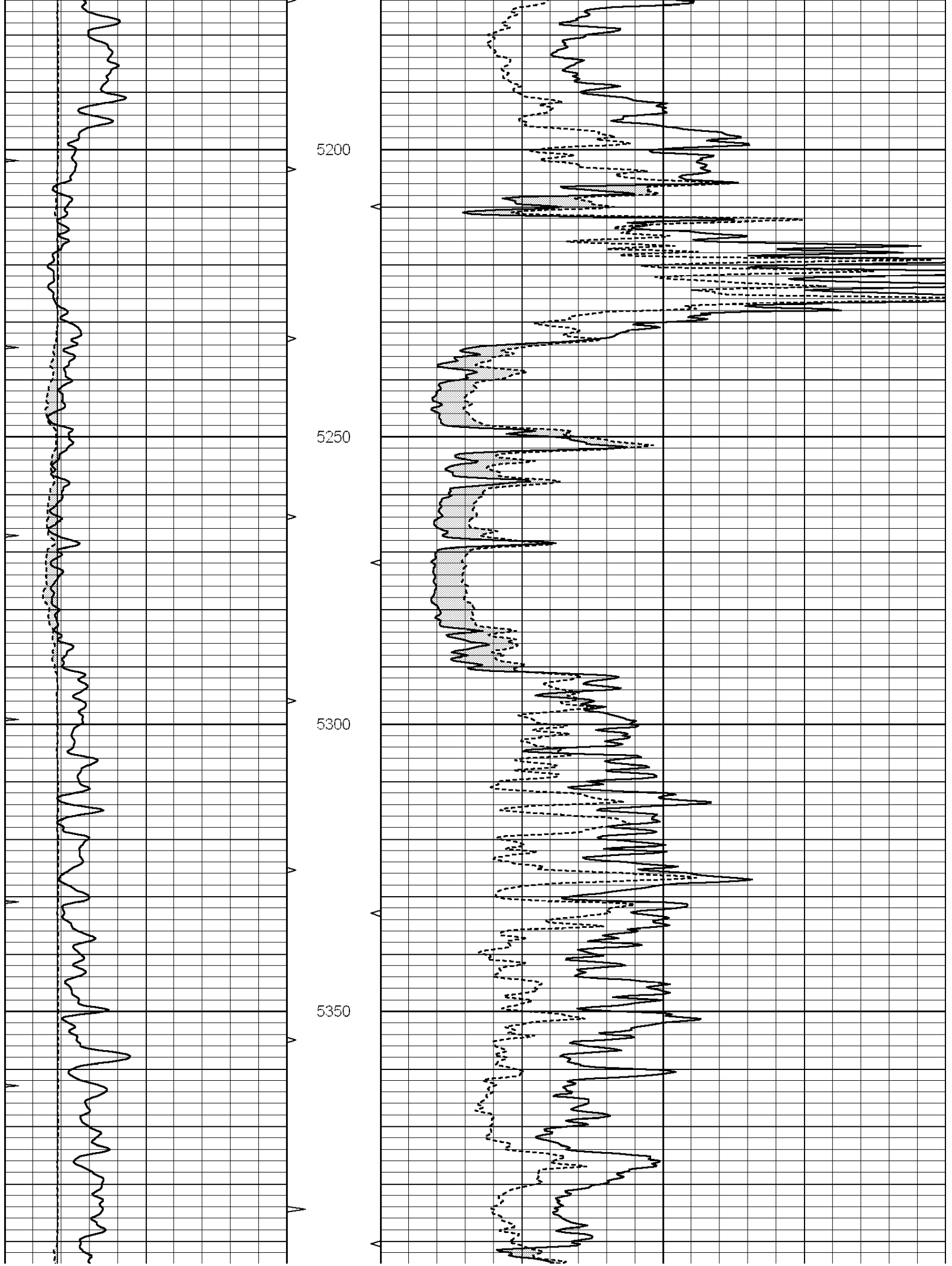


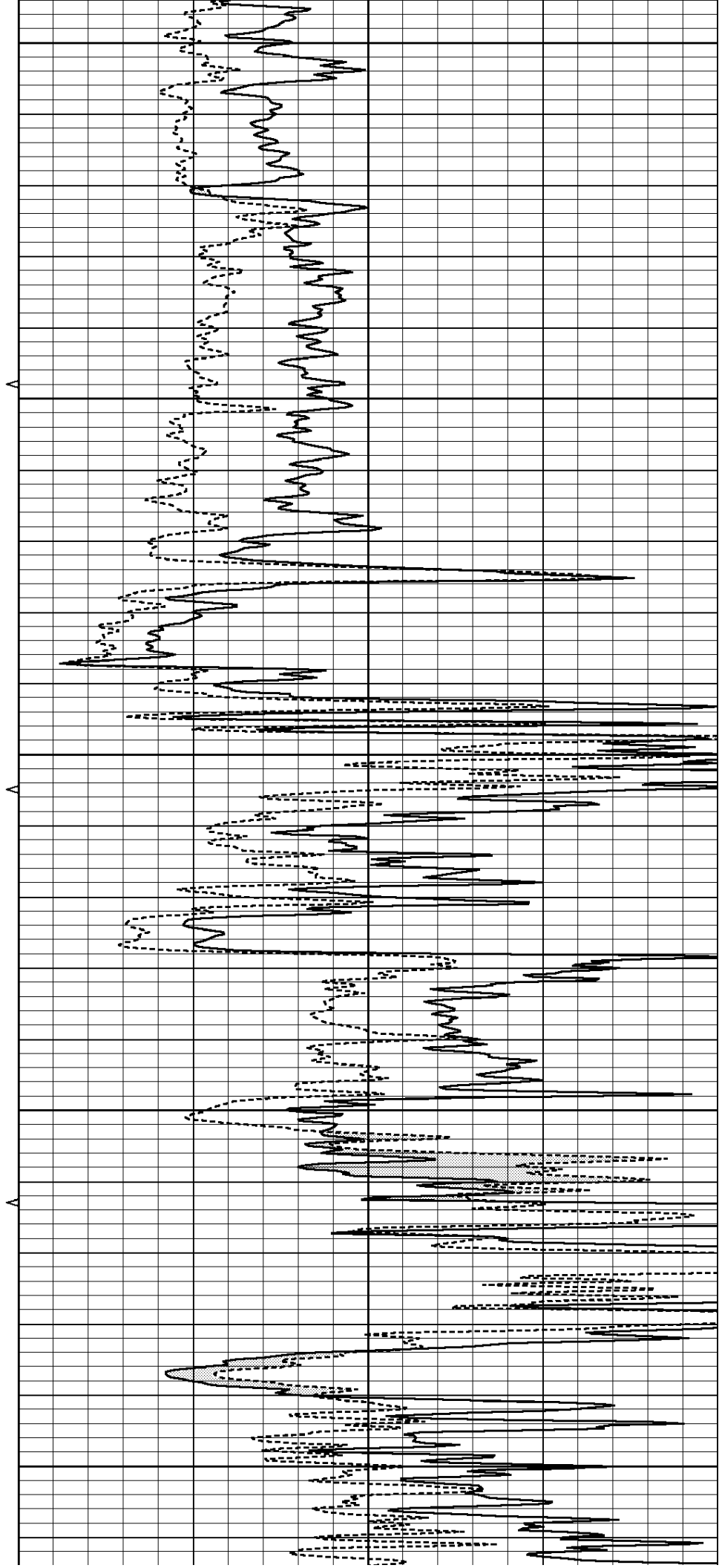
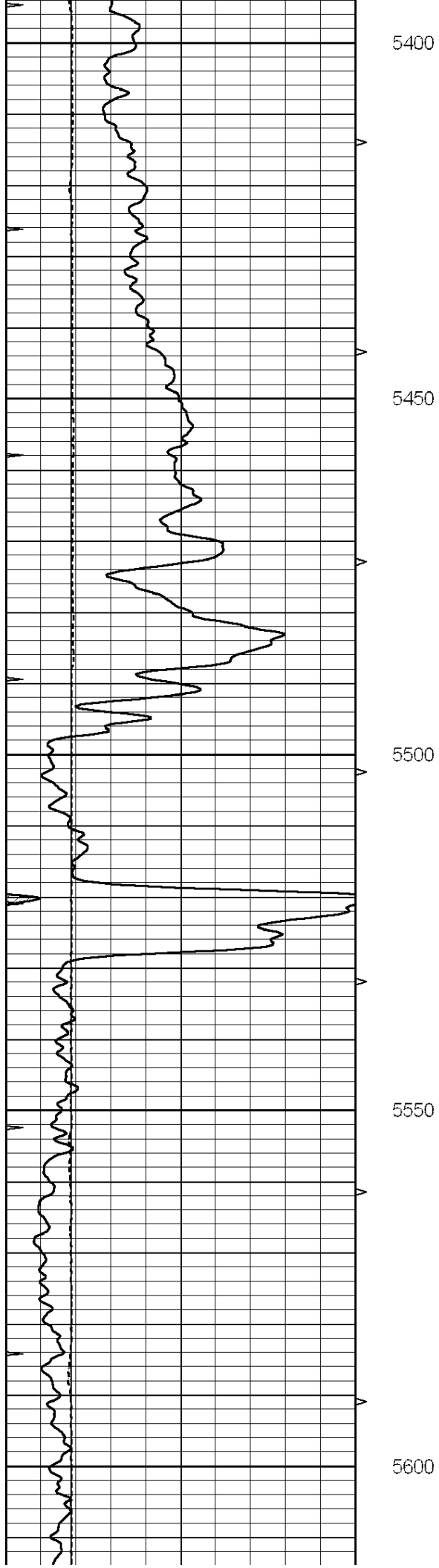


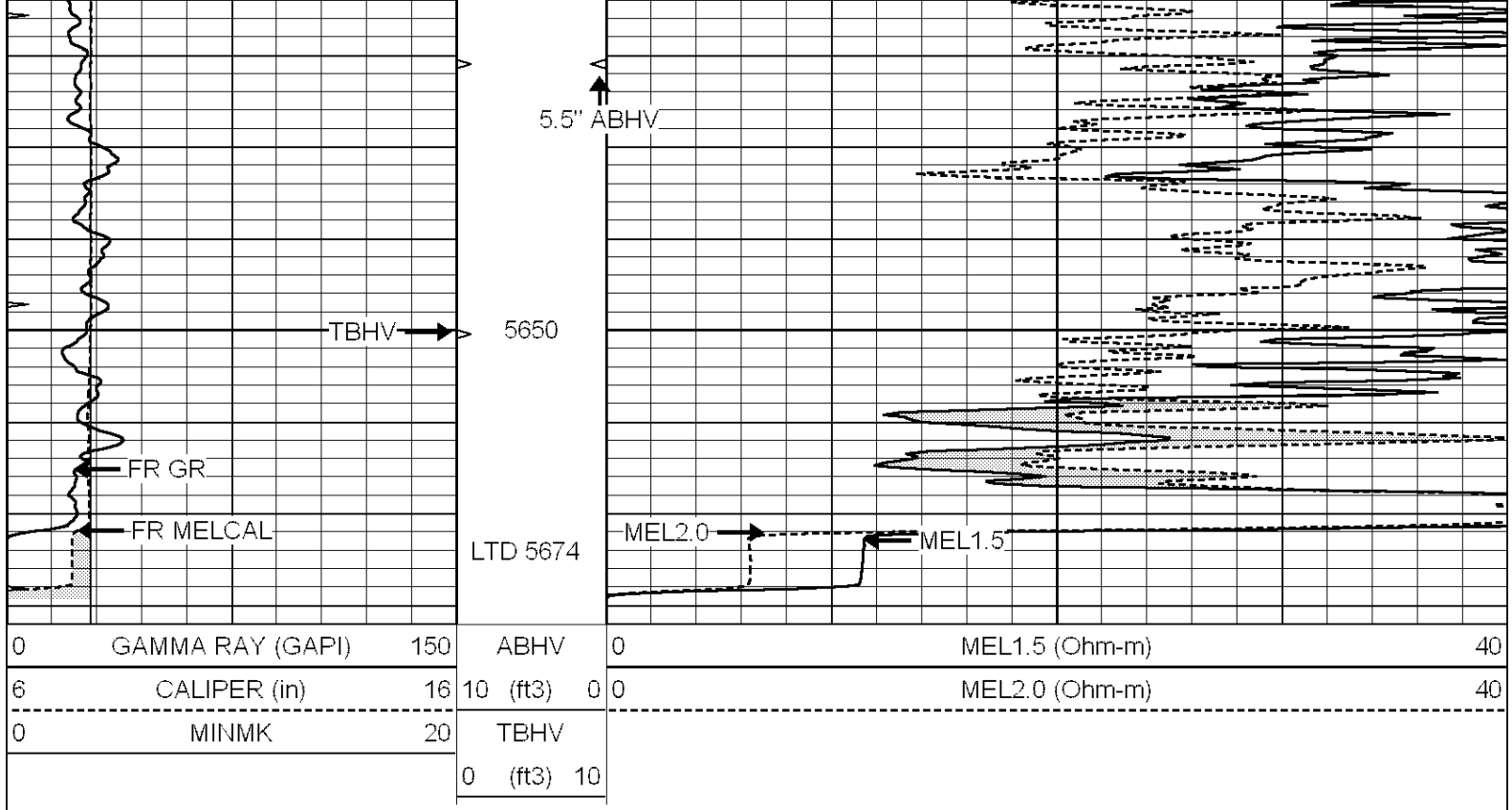








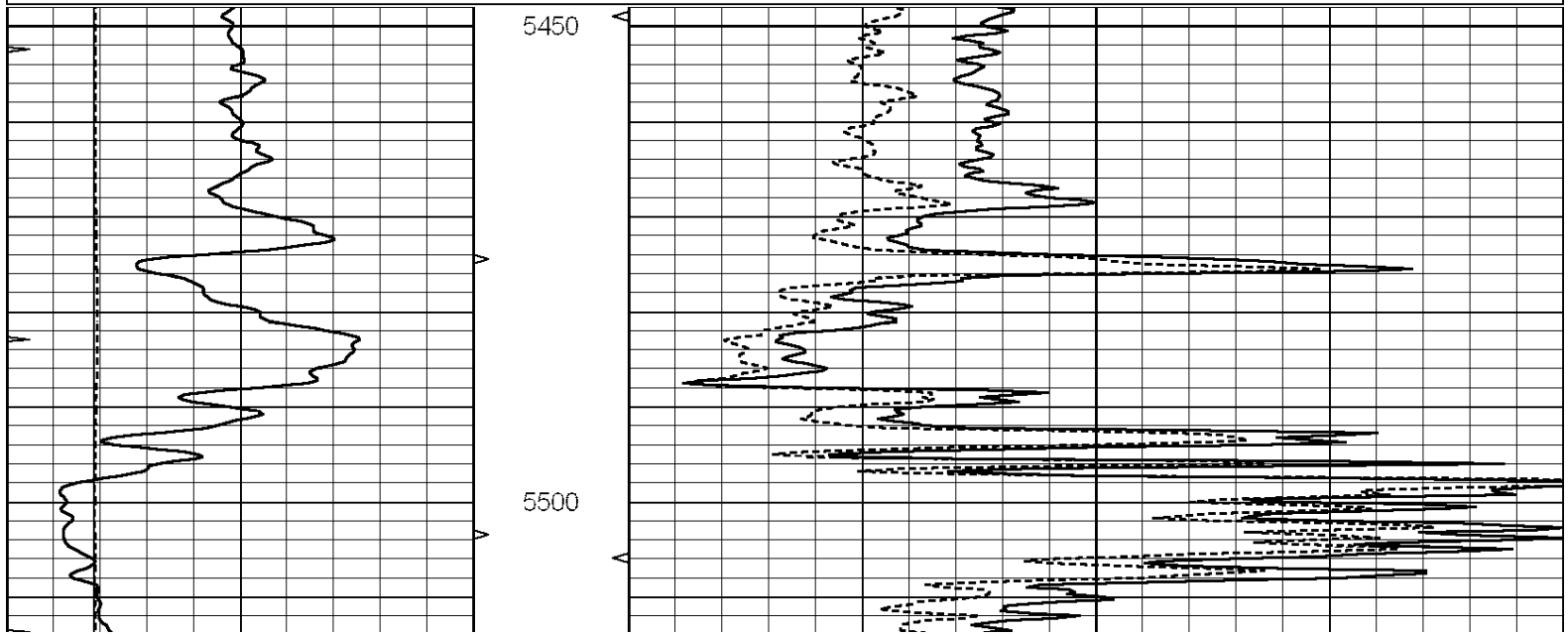


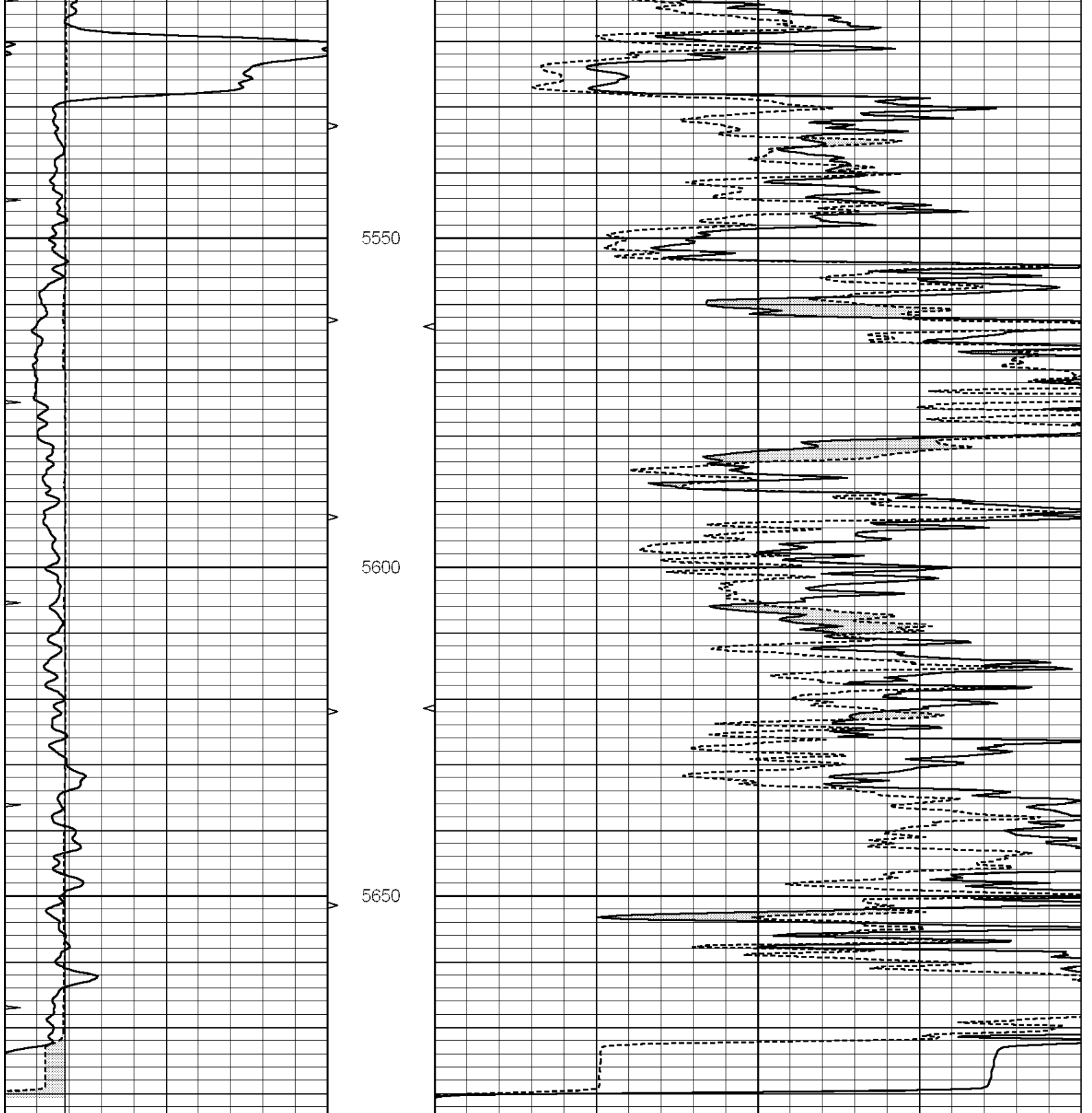


REPEAT SECTION

Database File: 22235pe.db
 Dataset Pathname: pass5.1
 Presentation Format: micro
 Dataset Creation: Thu Jan 16 06:40:59 2014 by Calc SOC 120430
 Charted by: Depth in Feet scaled 1:240

| | | | | | | |
|---|------------------|-----|----------|-----|----------------|----|
| 0 | GAMMA RAY (GAPI) | 150 | ABHV | 0 | MEL1.5 (Ohm-m) | 40 |
| 6 | CALIPER (in) | 16 | 10 (ft3) | 0 0 | MEL2.0 (Ohm-m) | 40 |
| 0 | MINMK | 20 | TBHV | | | |
| | | | 0 (ft3) | 10 | | |





| | | | | | | |
|---|------------------|-----|----------|-----|----------------|----|
| 0 | GAMMA RAY (GAPI) | 150 | ABHV | 0 | MEL1.5 (Ohm-m) | 40 |
| 6 | CALIPER (in) | 16 | 10 (ft3) | 0 0 | MEL2.0 (Ohm-m) | 40 |
| 0 | MINMK | 20 | TBHV | | | |
| | | | 0 (ft3) | 10 | | |

Calibration Report

Database File: 22235pe.db
 Dataset Pathname: pass6.2
 Dataset Creation: Thu Jan 16 08:14:19 2014 by Calc SOC 120430

MICRO Calibration Report

Serial Number: 070910
Tool Model: ProbeN
Performed: Mon Dec 09 04:32:42 2013

| | | |
|----------------------|---------------|-----------------|
| Caliper Calibration: | Gain=4.208 | Offset=1.270 |
| References | Low Cal 7.800 | High Cal 15.000 |
| Readings | 1.552 | 3.263 |

| | | |
|-------------------|---------------|-----------------|
| 1.5" Calibration: | Gain=30.000 | Offset=0.000 |
| References | Low Cal 0.000 | High Cal 20.000 |
| Readings | 0.001 | 1.229 |

| | | |
|-----------------|---------------|-----------------|
| 2" Calibration: | Gain=48.000 | Offset=-0.600 |
| References | Low Cal 0.000 | High Cal 20.000 |
| Readings | 0.004 | 1.057 |

Gamma Ray Calibration Report

Serial Number: 080328
Tool Model: Probe1
Performed: Mon Jan 06 19:15:27 2014

| | | |
|---------------------|--------|----------|
| Calibrator Value: | 1.0 | GAPI |
| Background Reading: | 0.0 | cps |
| Calibrator Reading: | 1.0 | cps |
| Sensitivity: | 0.2200 | GAPI/cps |