



Pioneer Energy Services

Dual Induction Log

API No.	15-101-22473-00-00		
Company	Larson Engineering, Inc.		
Well	Dutoit # 1-32		
Field	Amy West		
County	Lane	State	Kansas
Location	642' FNL & 638' FWL		
Sec: 32	Twp: 18 S	Rge: 30 W	Other Services CNL/CDL MEL

Permanent Datum	Ground Level	Elevation 2892	K.B. 2899
Log Measured From	Kelly Bushing	7 Ft. Above Perm. Datum	D.F. 2892
Drilling Measured From	Kelly Bushing		G.L. 2892
Date	01-04-2014		
Run Number	One		
Depth Driller	4614		
Depth Logger	4614		
Bottom Logged Interval	4613		
Top Log Interval	250		
Casing Driller	8.625 @ 273		
Casing Logger	272		
Bit Size	7.875		
Type Fluid in Hole	Chemical		
Salinity, ppm CL	3200		
Density / Viscosity	9.0	55	
pH / Fluid Loss	7.2	10.5	
Source of Sample	Flowline		
Rm @ Meas. Temp	1.20	@ 35	
Rmf @ Meas. Temp	0.90	@ 35	
Rmc @ Meas. Temp	1.62	@ 35	
Source of Rmf / Rmc	Charts		
Rm @ BHT	0.34	@ 124	
Operating Rig Time	4 1/2 Hours		
Max Rec. Temp. F	124		
Equipment Number	91		
Location	Hays		
Recorded By	Y. Ruiz		
Witnessed By	Vern Schrag		

<<< Fold Here >>>

All interpretations are opinions based on inferences from electrical or other measurements and we cannot and do not guarantee the accuracy or correctness of any interpretation, and we shall not, except in the case of gross or willful negligence on our part, be liable or responsible for any loss, costs, damages, or expenses incurred or sustained by anyone resulting from any interpretation made by any of our officers, agents or employees. These interpretations are also subject to our general terms and conditions set out in our current Price Schedule.

Comments

Thank you for using Log-Tech, Inc.
(785) 625-3858

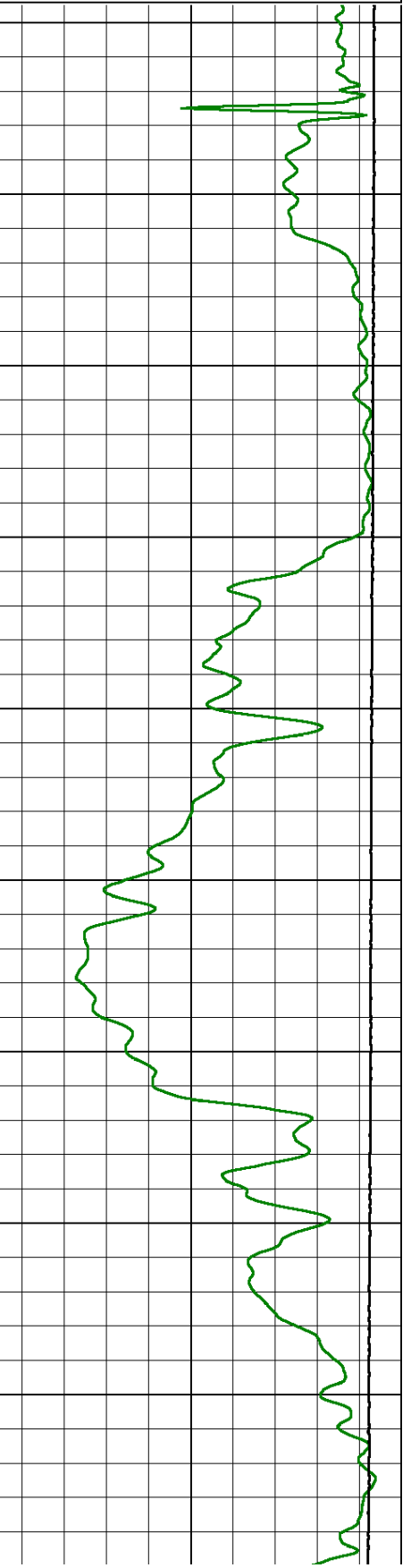
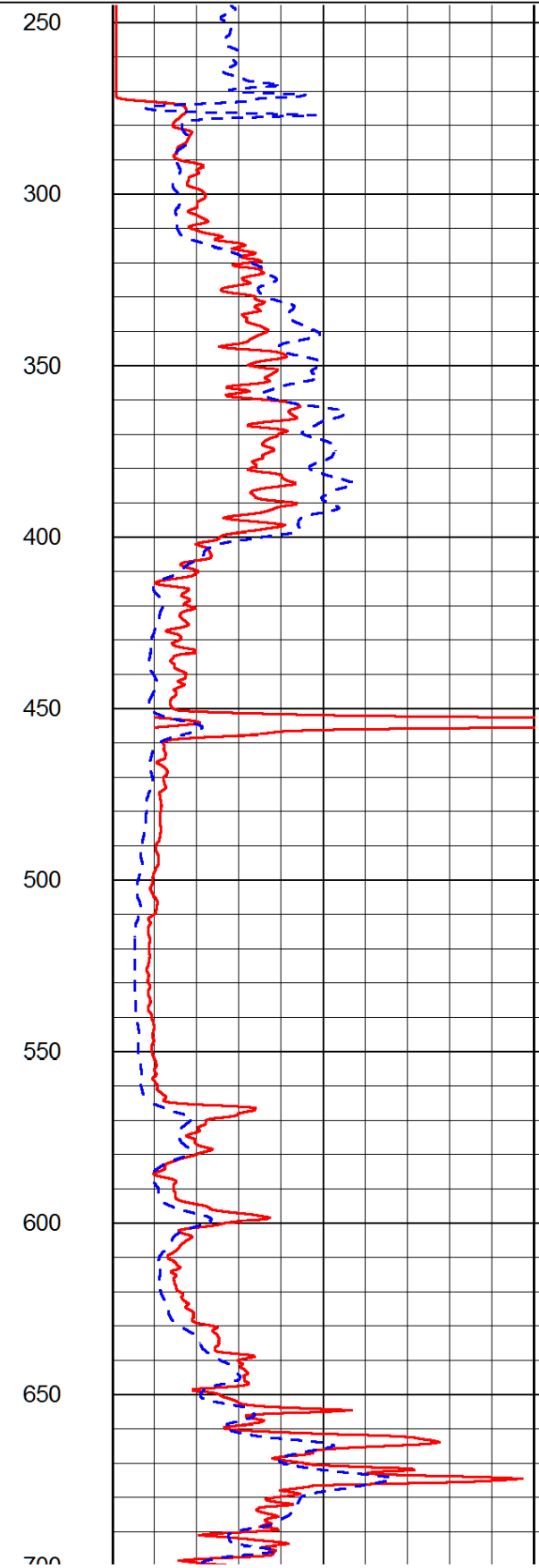
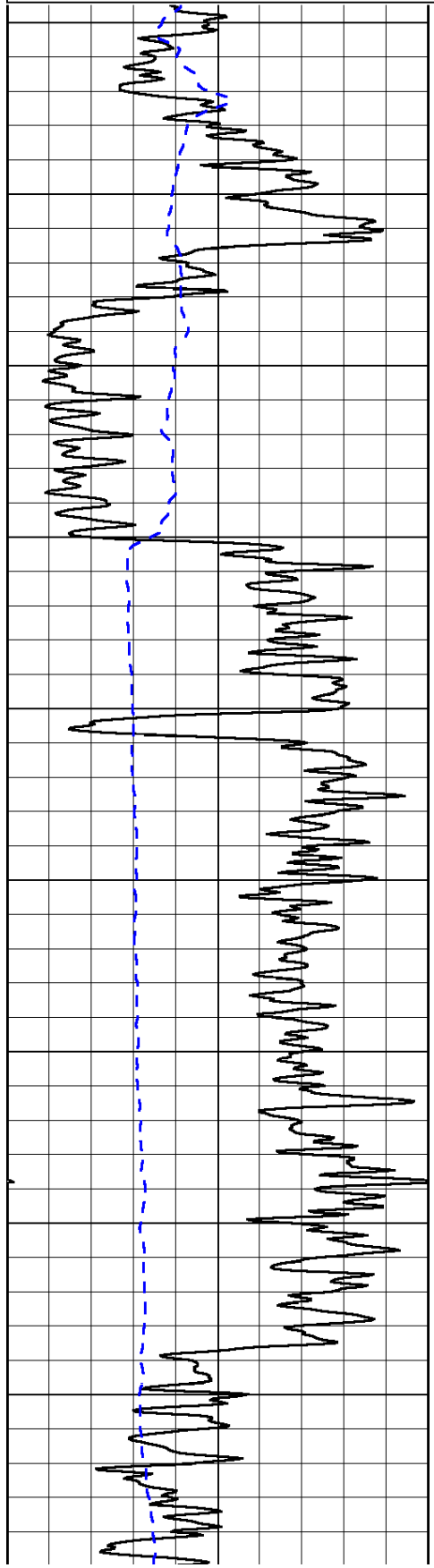
Dighton,
West to Arapahoe RD, 2 1/8 South,
East into

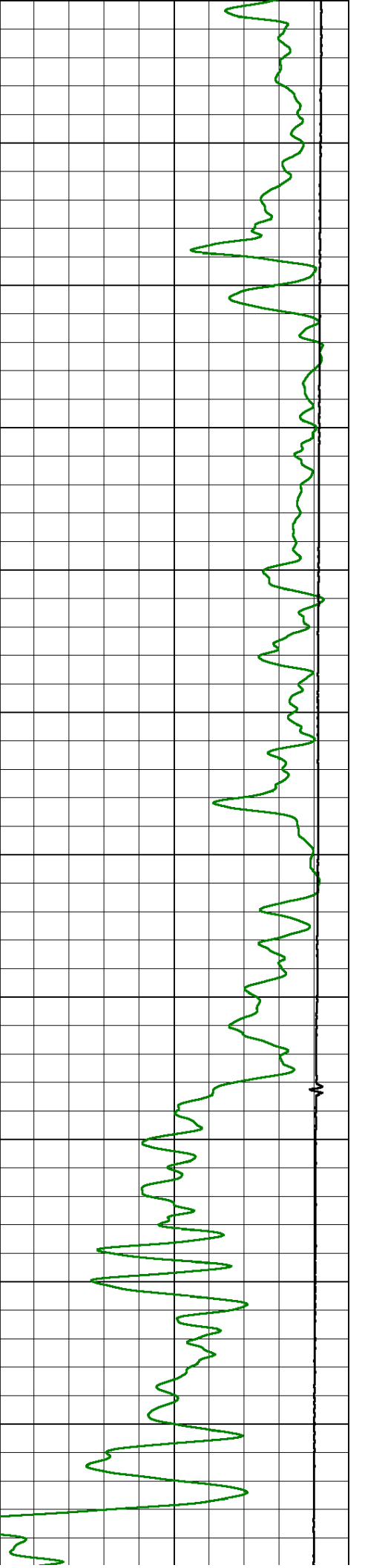
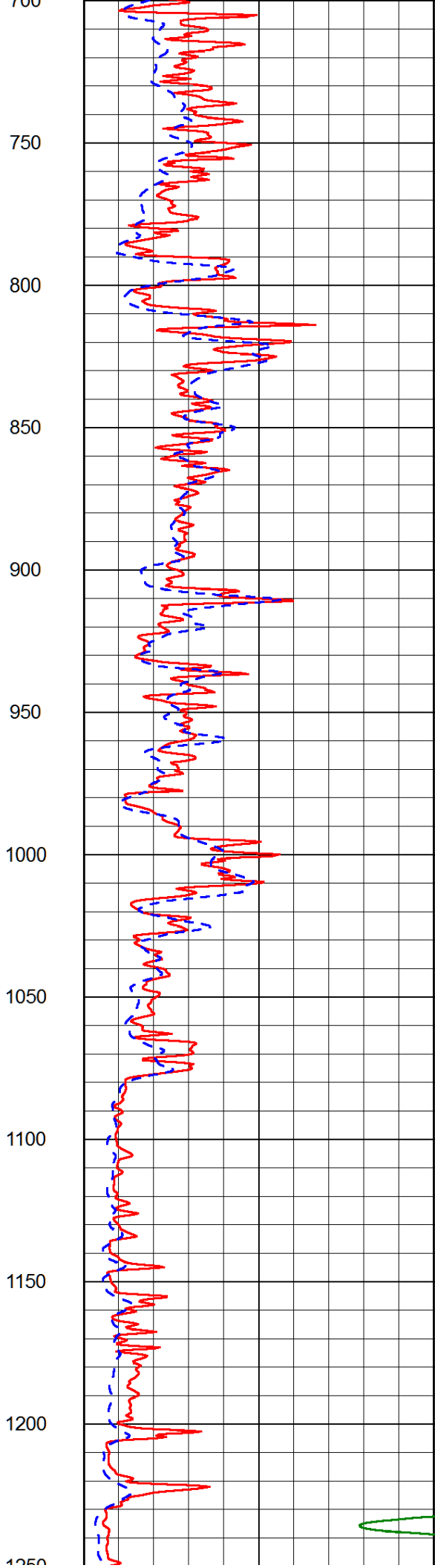
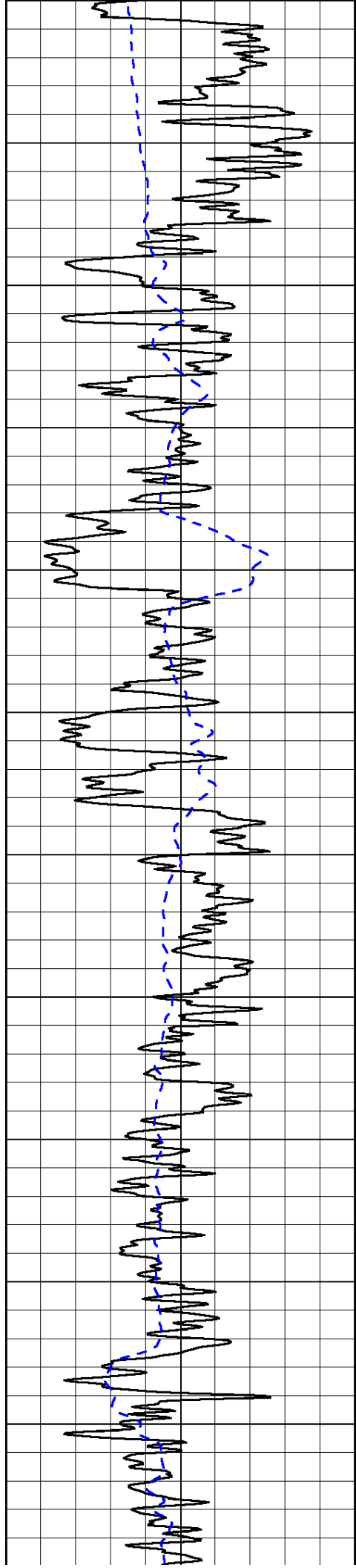
0	Gamma Ray (GAPI)	150
-200	SP (mV)	0

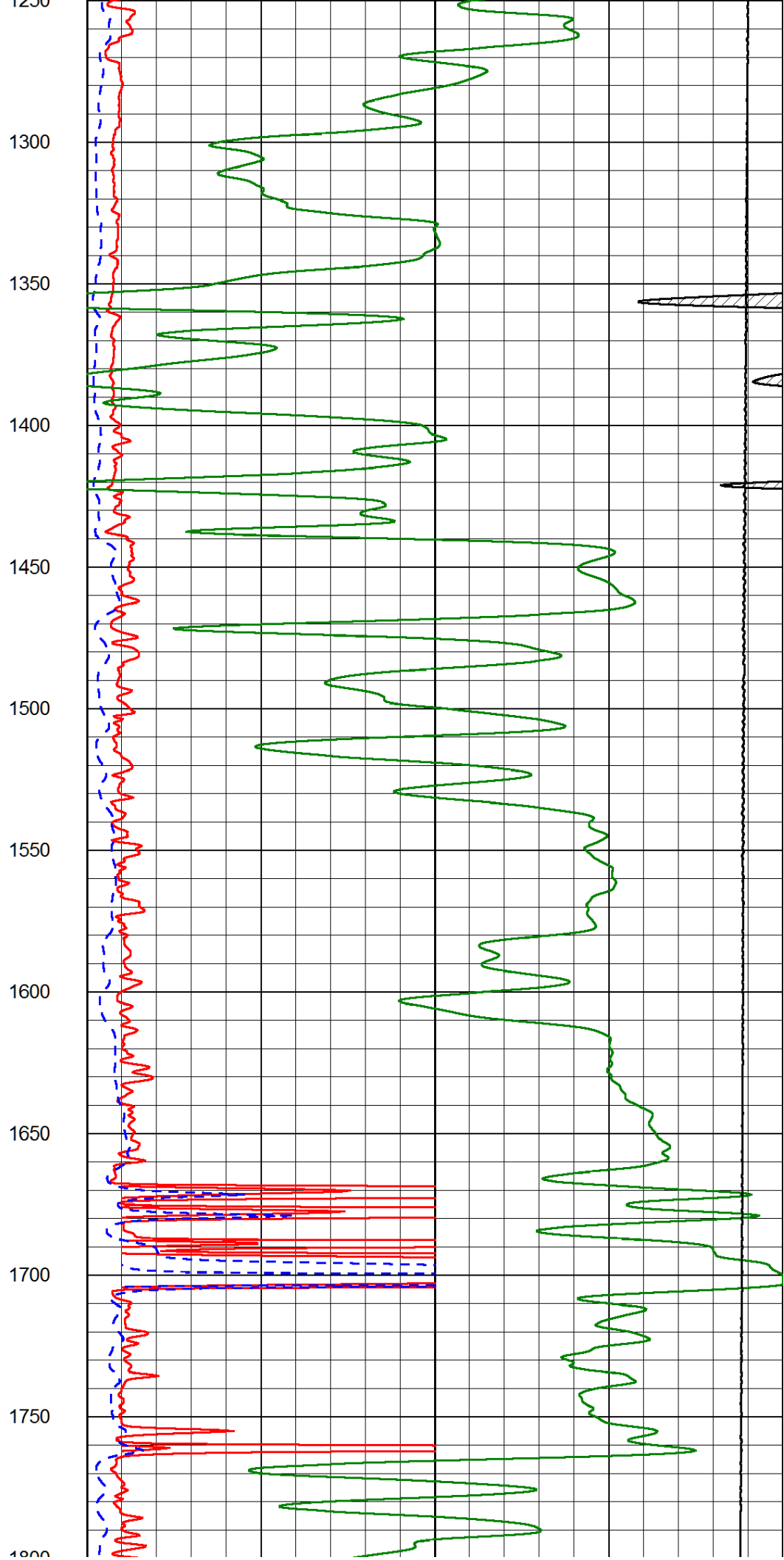
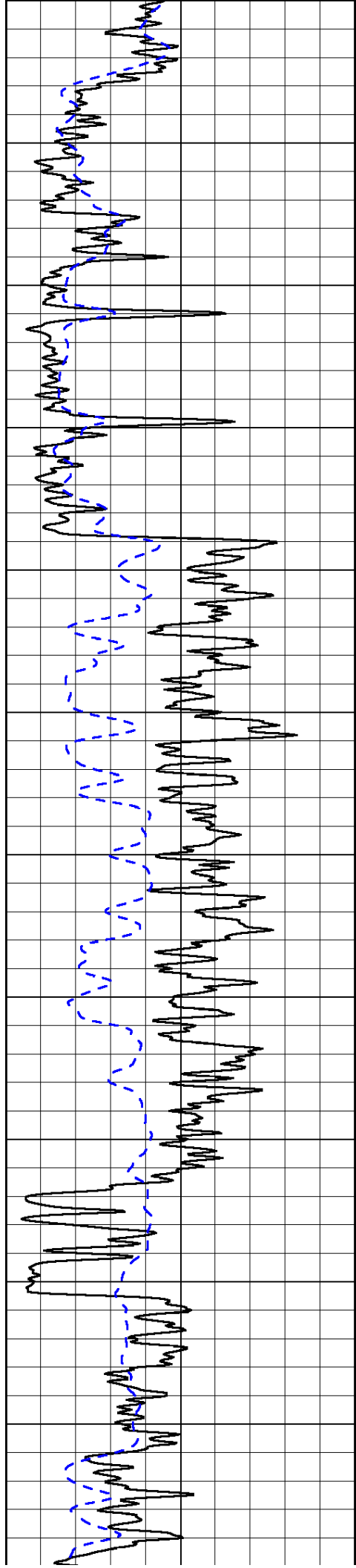
0	Shallow Resistivity (Ohm-m)	50
0	Deep Resistivity (Ohm-m)	50

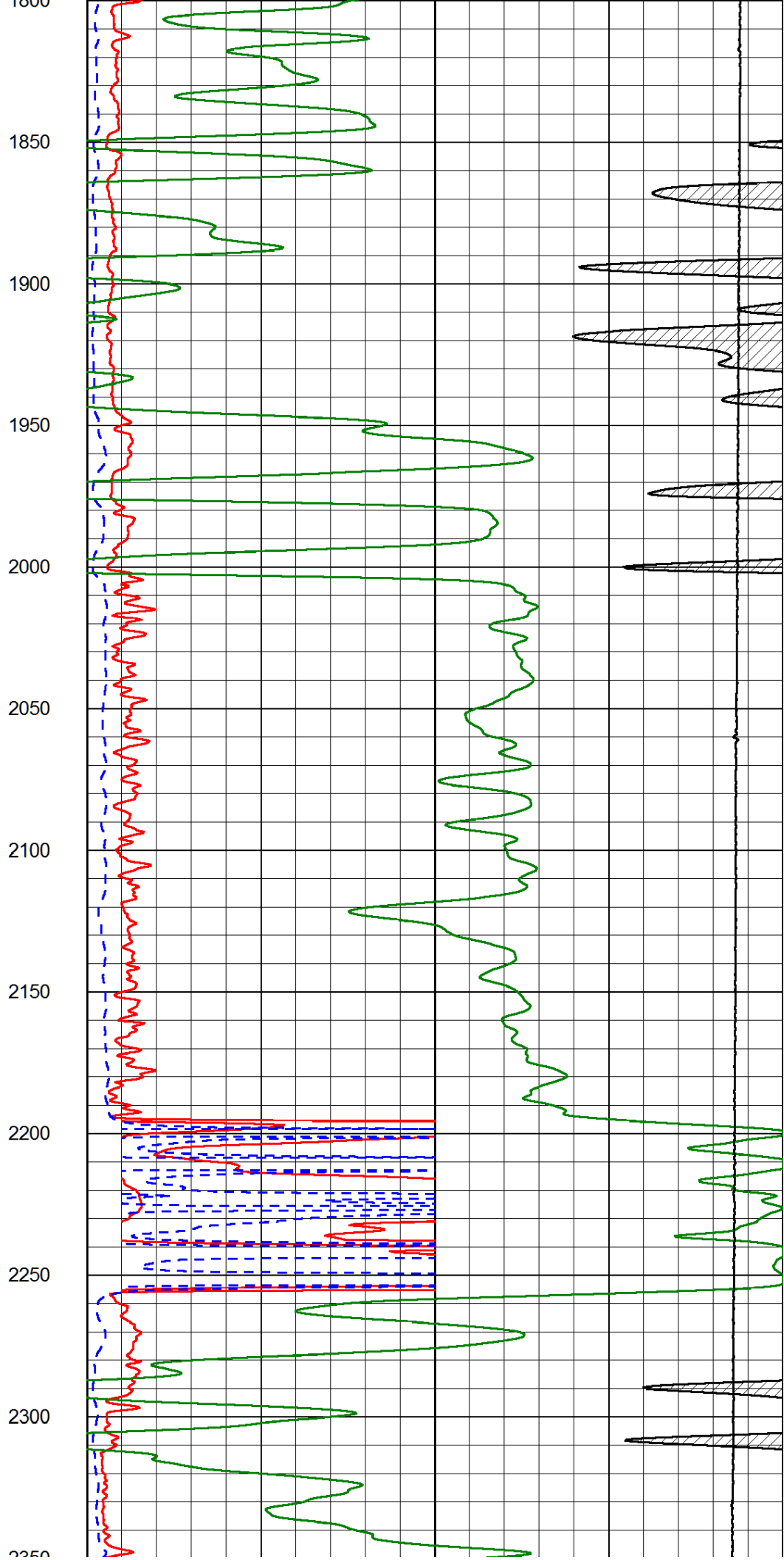
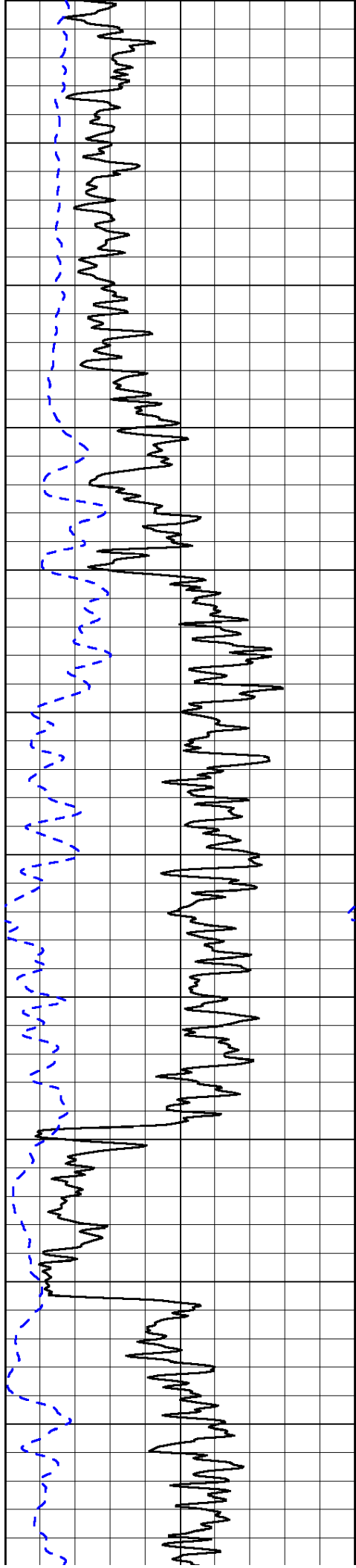
1000	Conductivity (Ohm-m)	0
15000	Line Tension (lb)	0

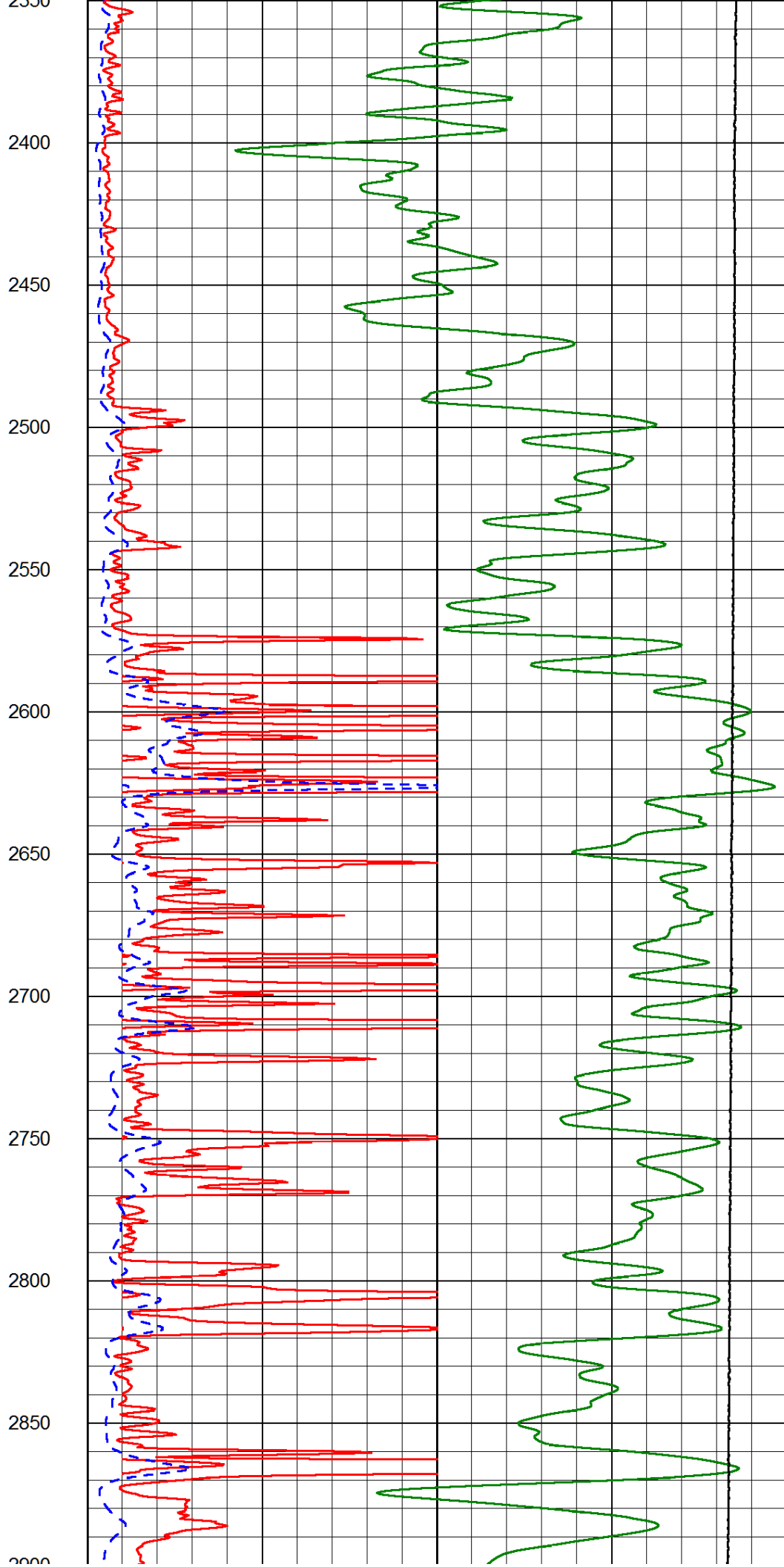
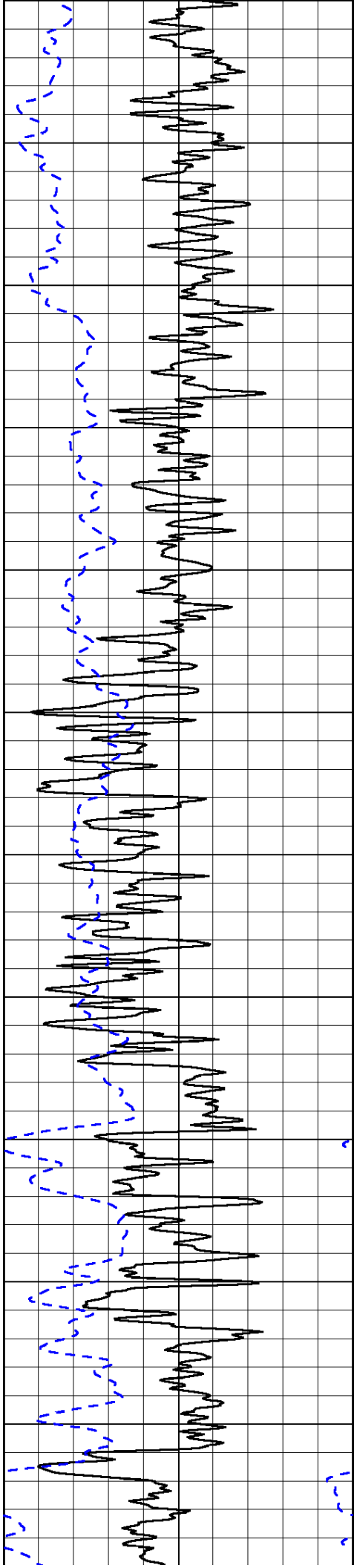
Shallow Resistivity		
50	(Ohm-m)	500
50	Deep Resistivity (Ohm-m)	500

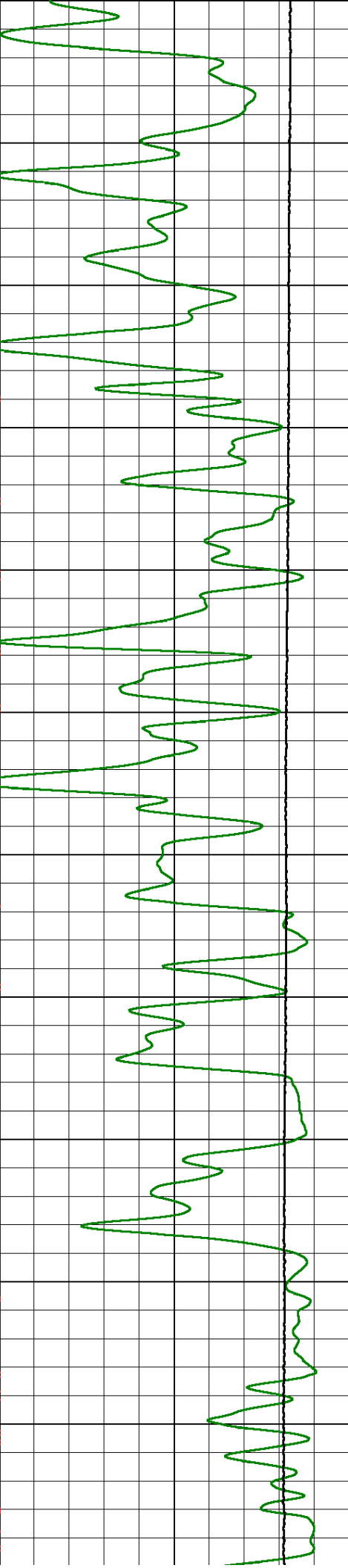
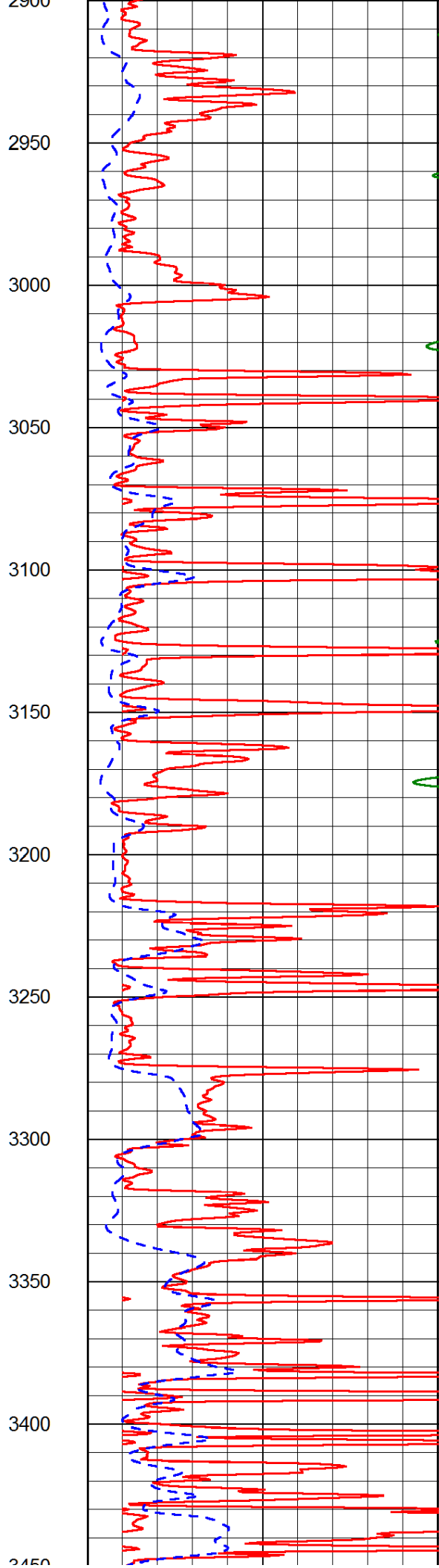
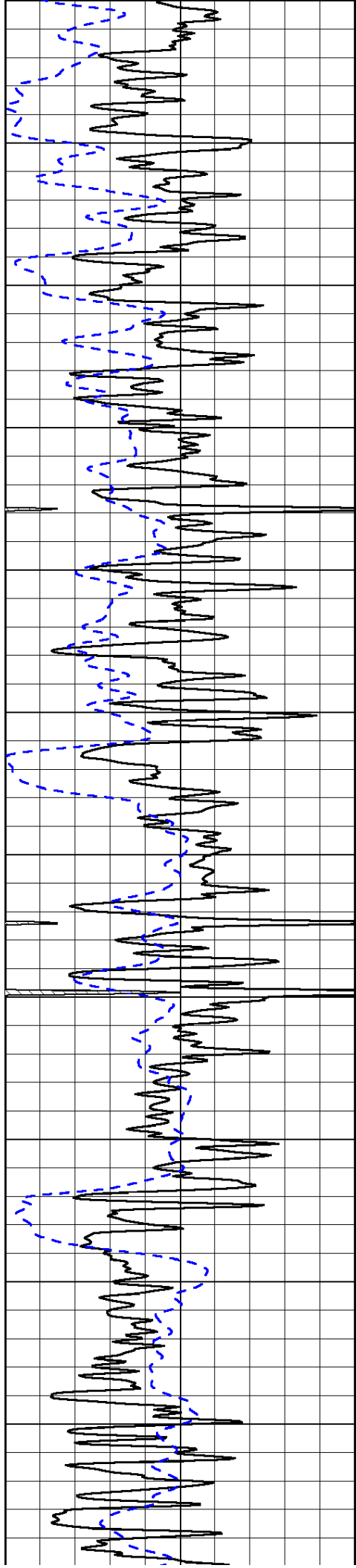


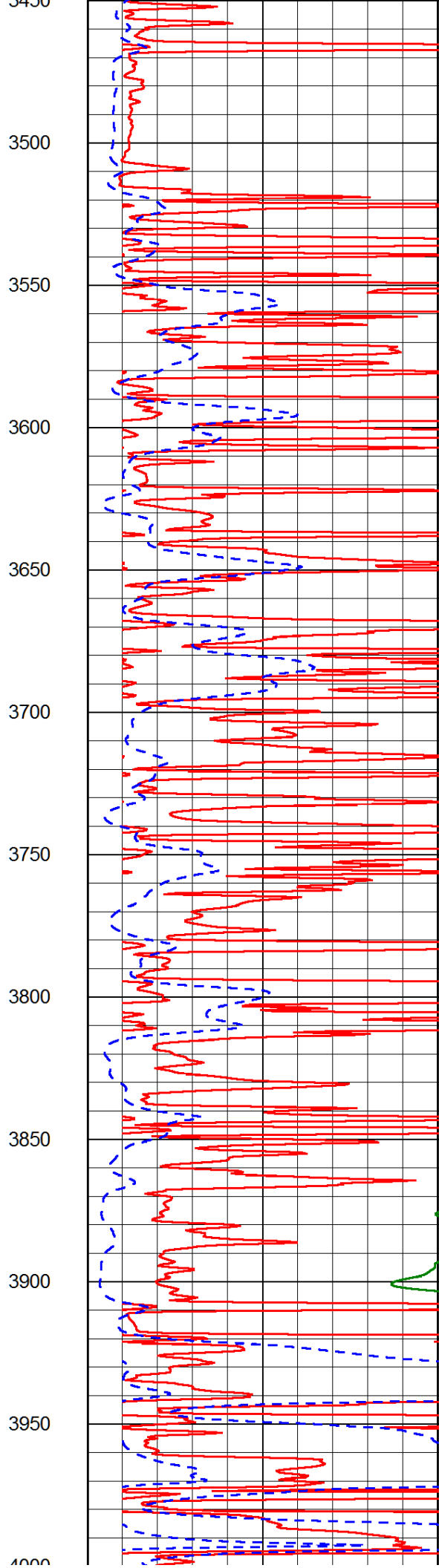
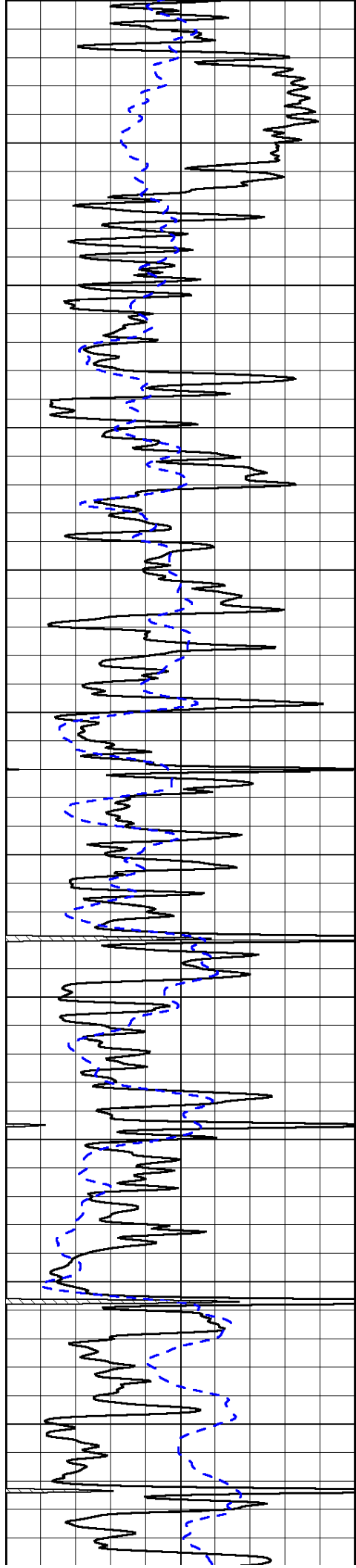


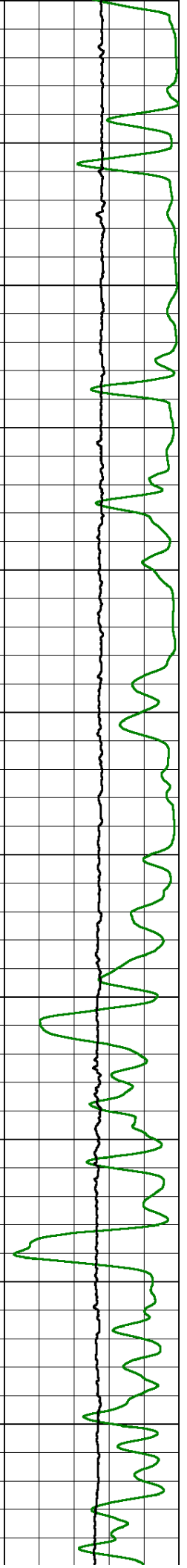
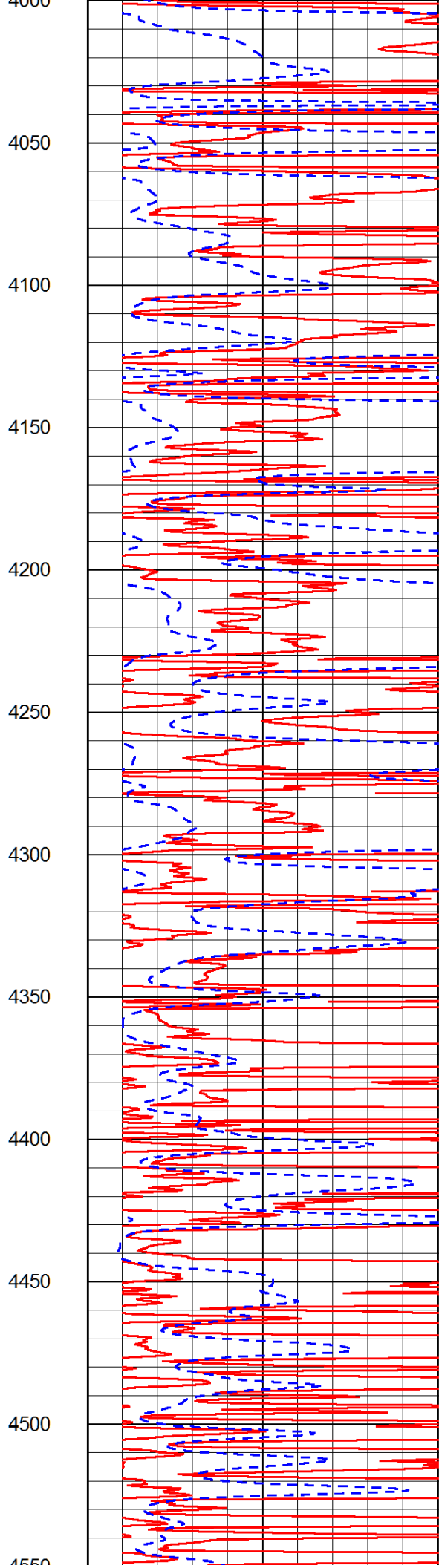
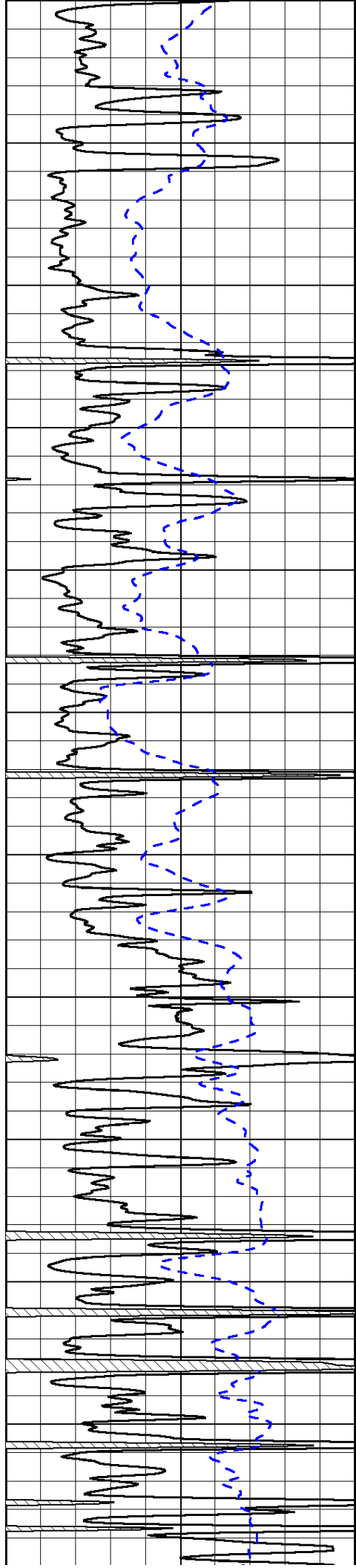


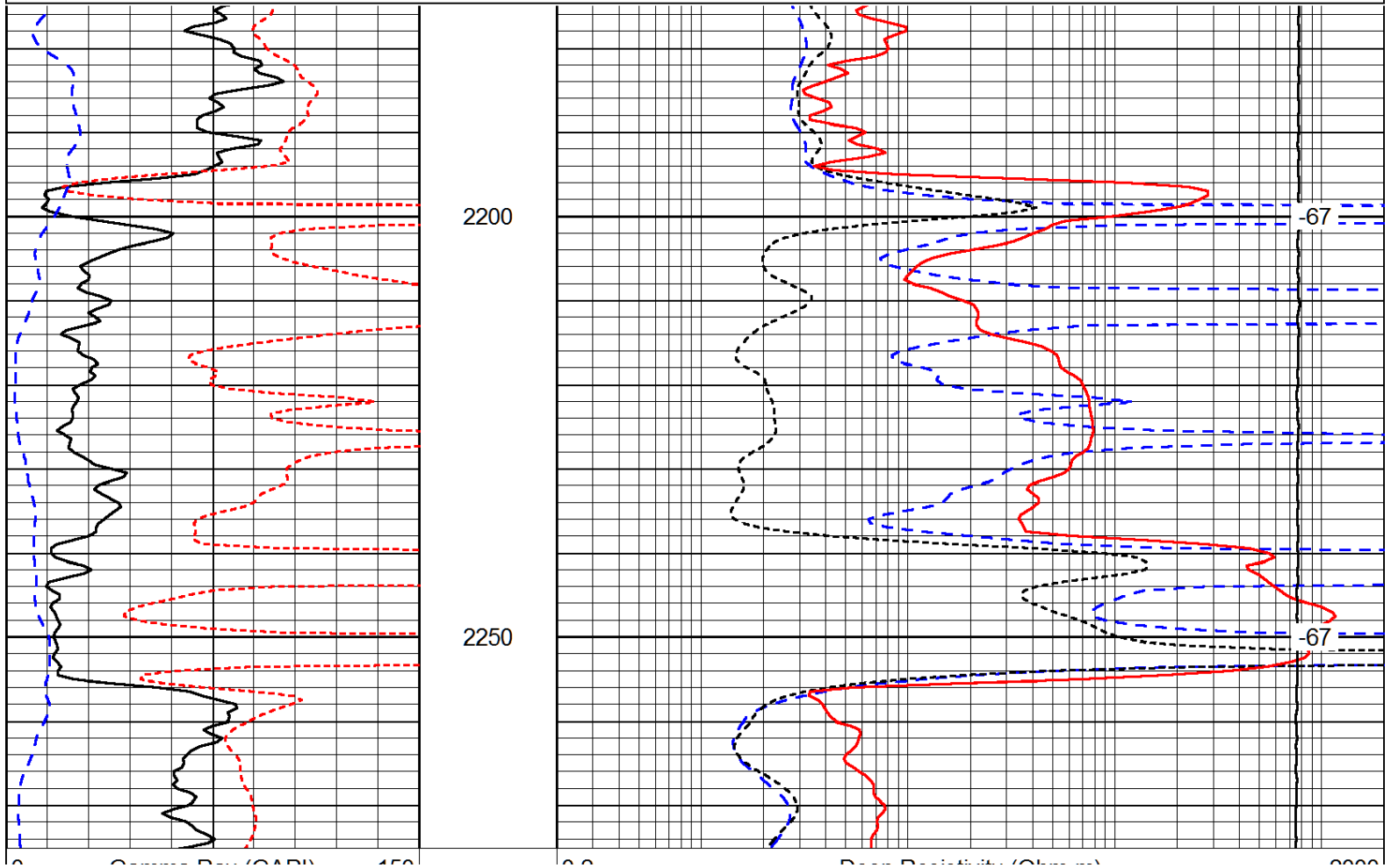
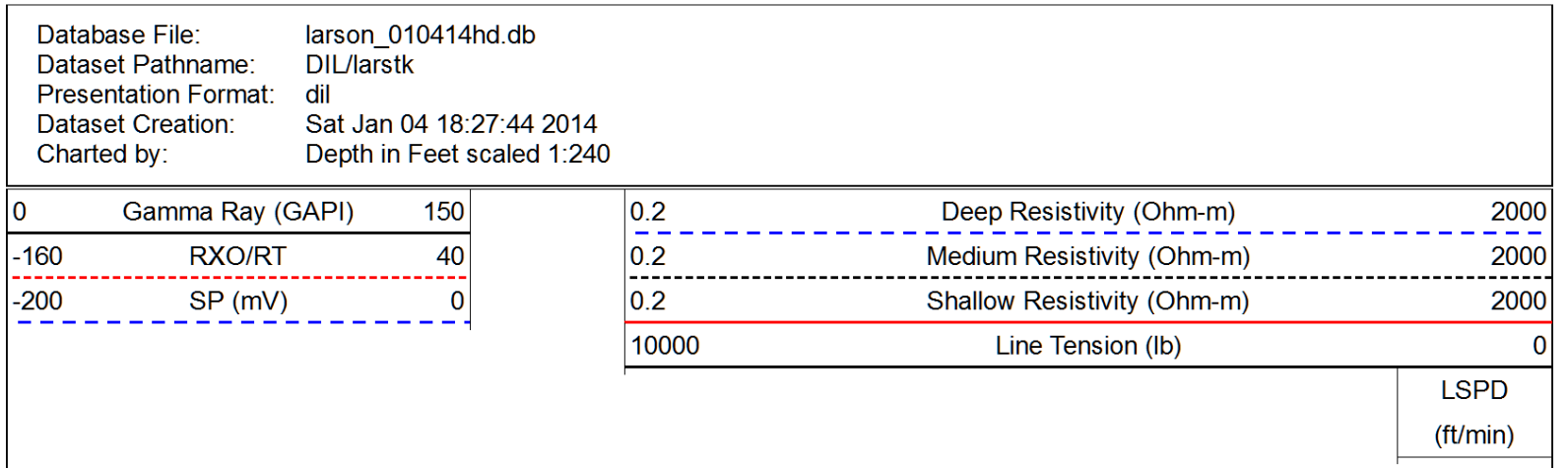
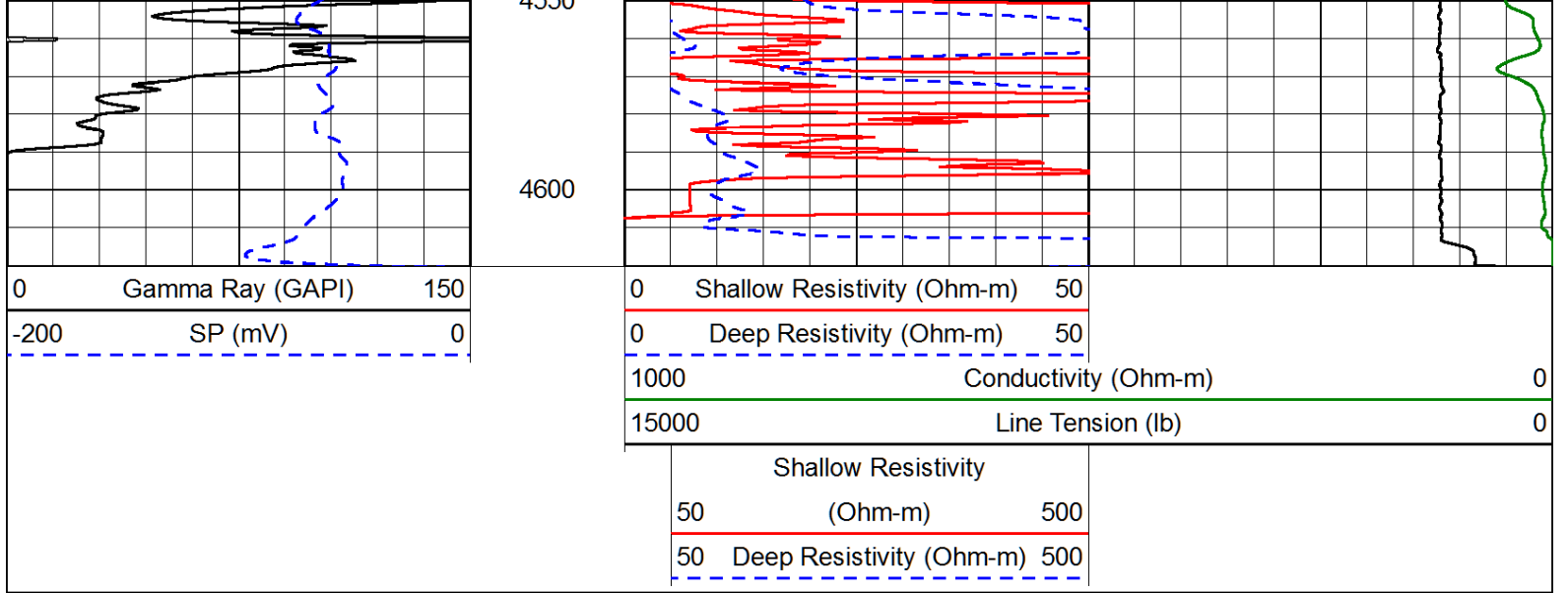












0	Gamma Ray (GAPI)	150
-160	RXO/RT	40
-200	SP (mV)	0

0.2	Deep Resistivity (Ohm-m)	2000
0.2	Medium Resistivity (Ohm-m)	2000
0.2	Shallow Resistivity (Ohm-m)	2000
10000	Line Tension (lb)	0

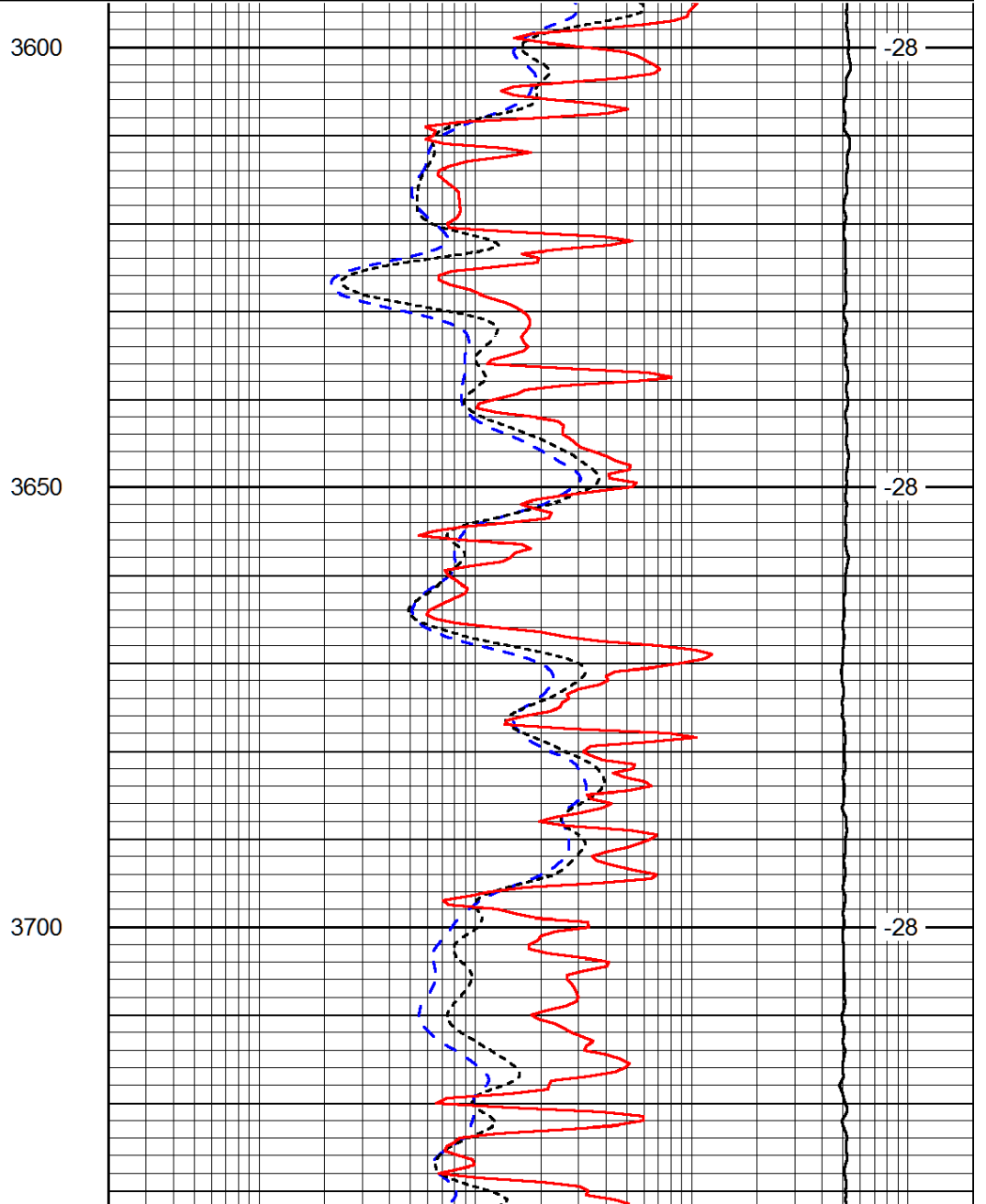
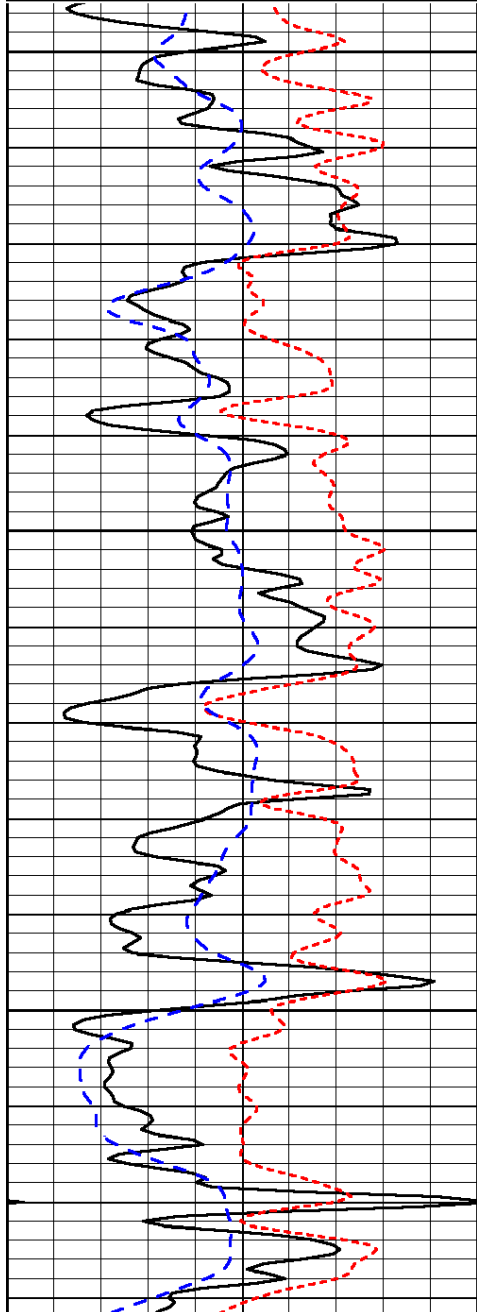
LSPD
(ft/min)

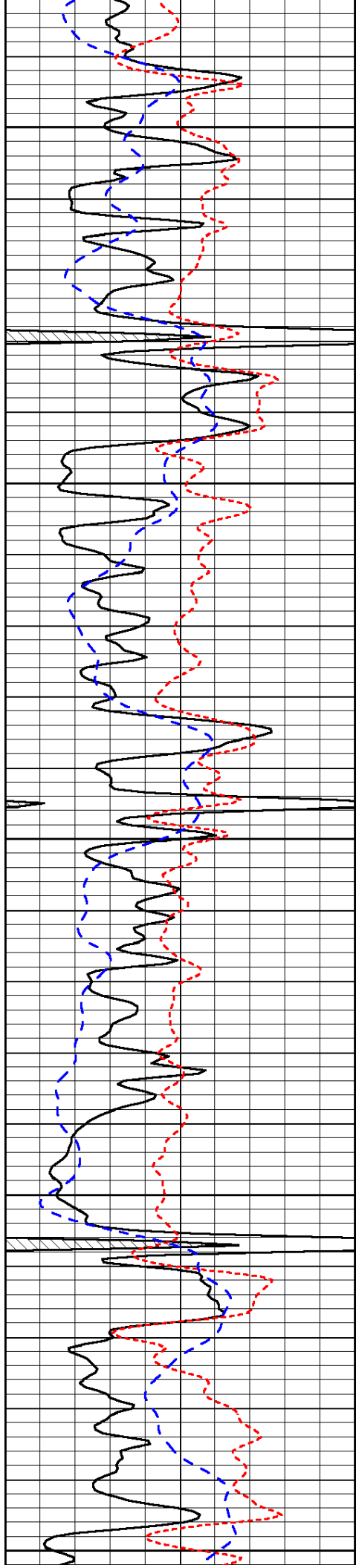
Database File: laron_010414hd.db
 Dataset Pathname: DIL/larstk
 Presentation Format: dil
 Dataset Creation: Sat Jan 04 18:27:44 2014
 Charted by: Depth in Feet scaled 1:240

0	Gamma Ray (GAPI)	150
-160	RXO/RT	40
-200	SP (mV)	0

0.2	Deep Resistivity (Ohm-m)	2000
0.2	Medium Resistivity (Ohm-m)	2000
0.2	Shallow Resistivity (Ohm-m)	2000
10000	Line Tension (lb)	0

LSPD
(ft/min)





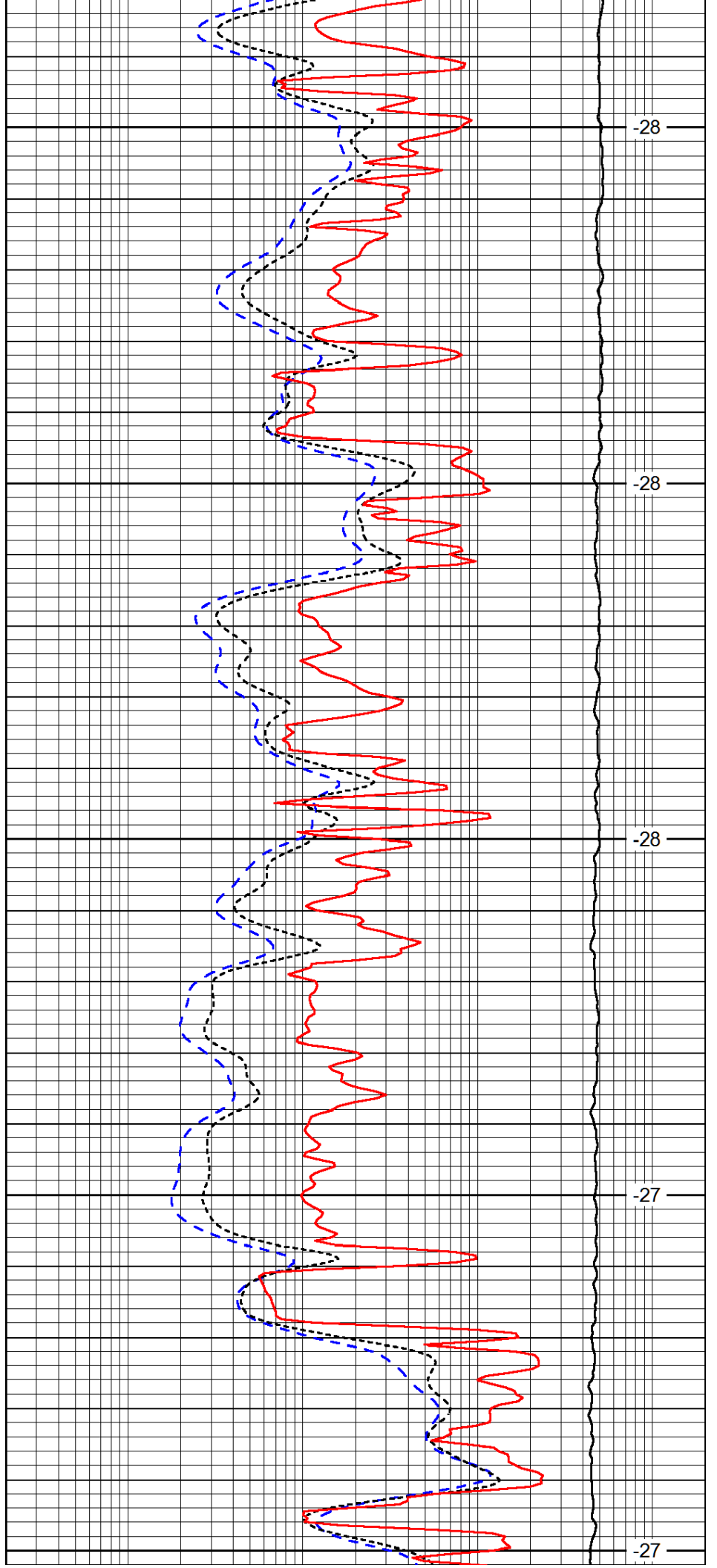
3750

3800

3850

3900

3950



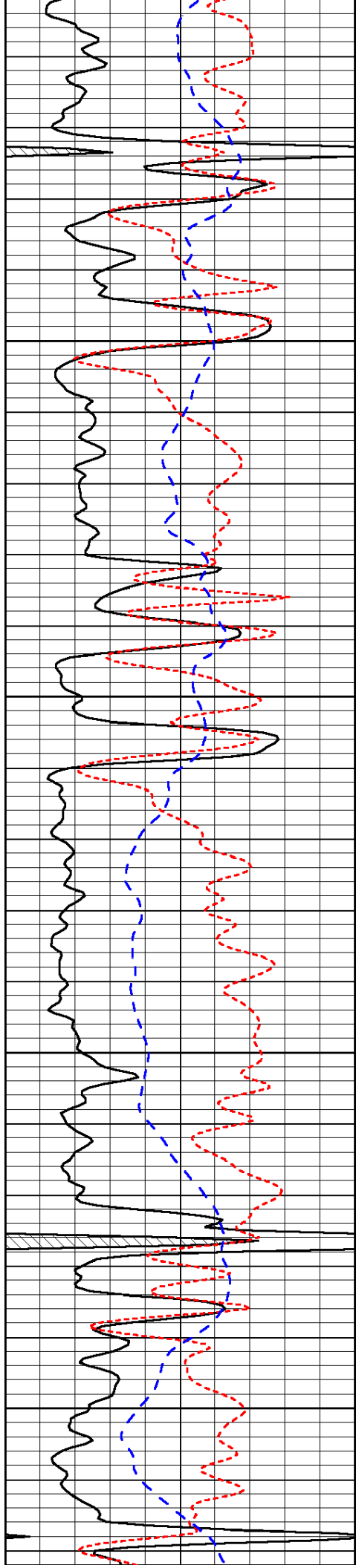
-28

-28

-28

-27

-27

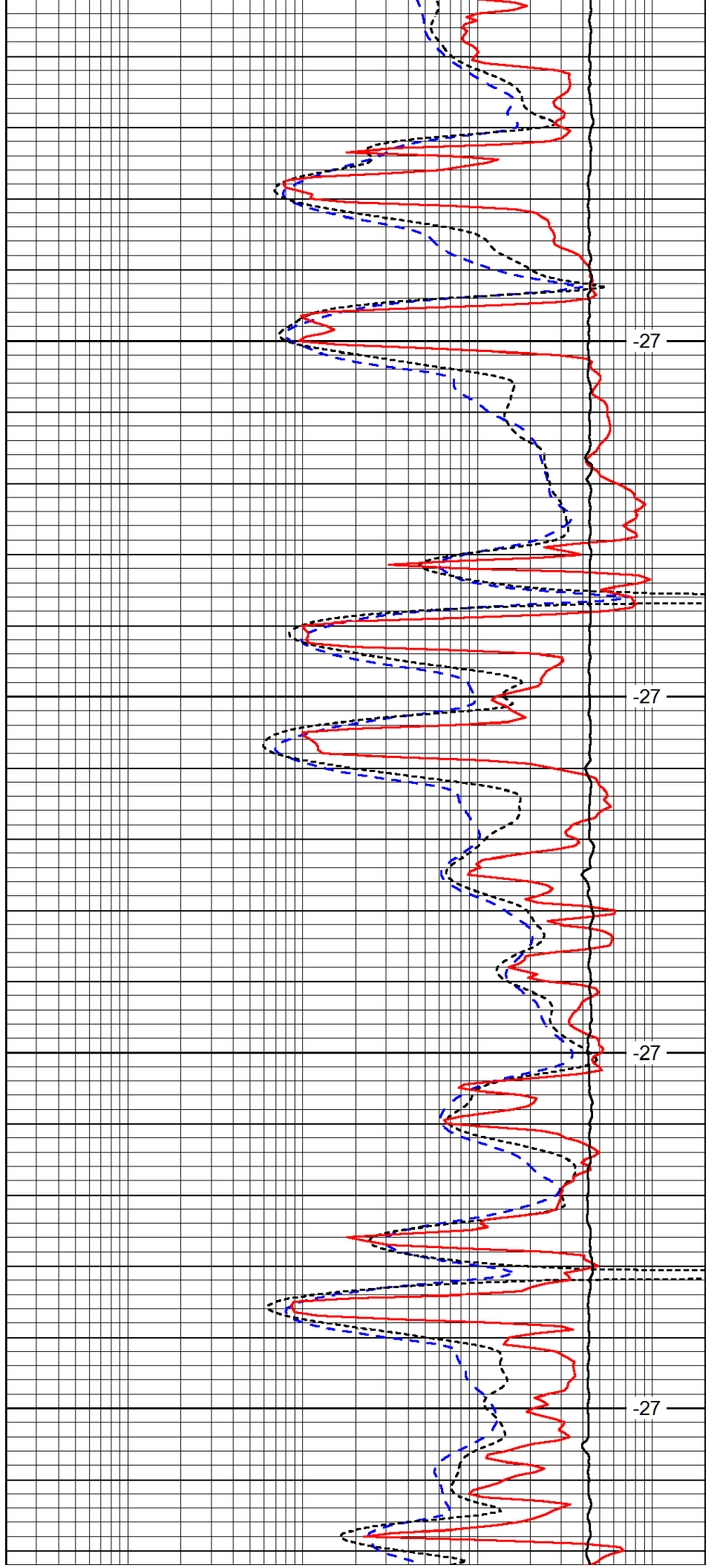


4000

4050

4100

4150

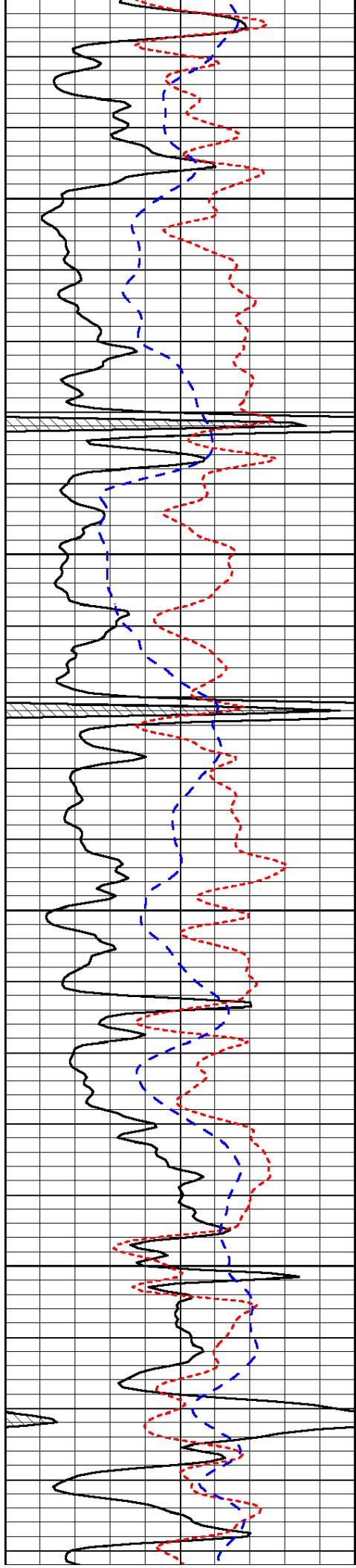


-27

-27

-27

-27

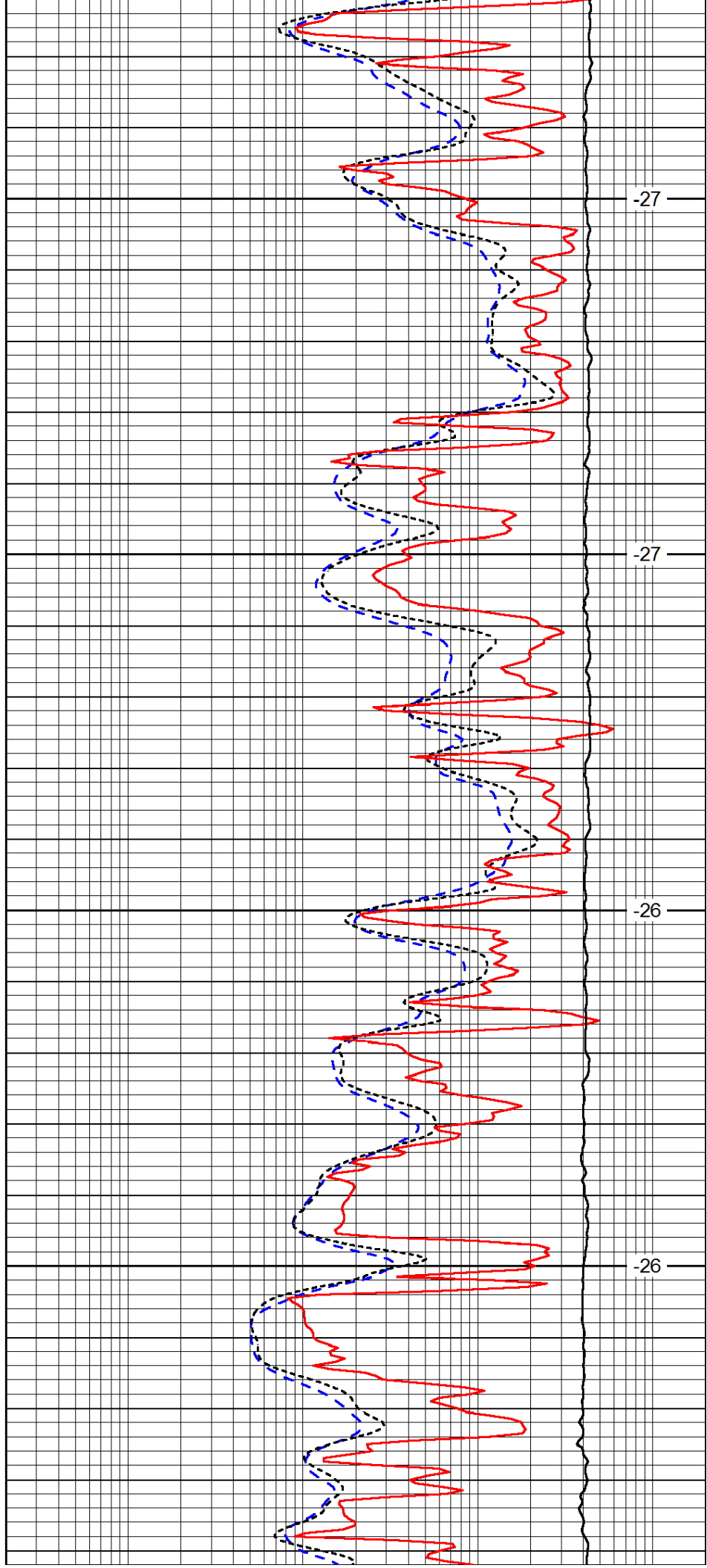


4200

4250

300

4350

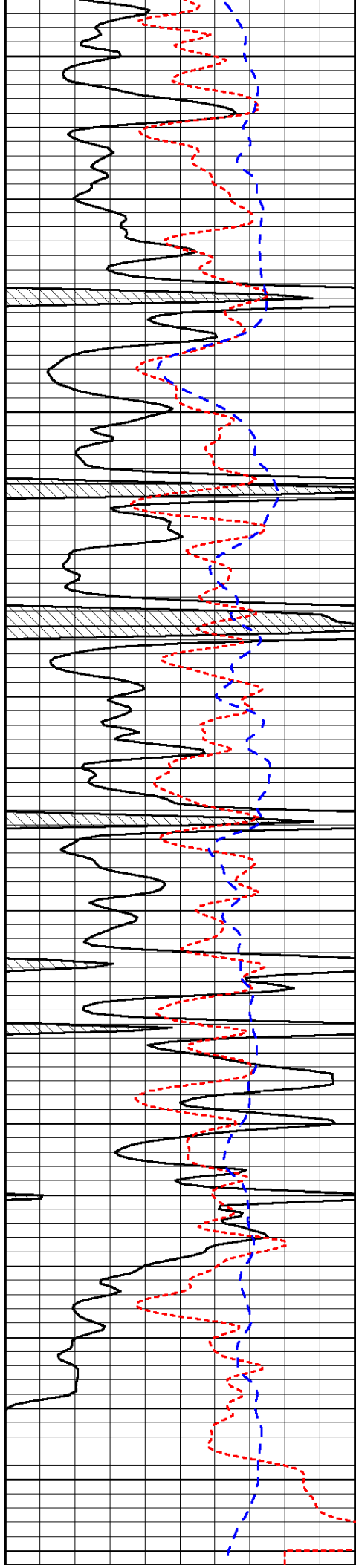


-27

-27

-26

-26



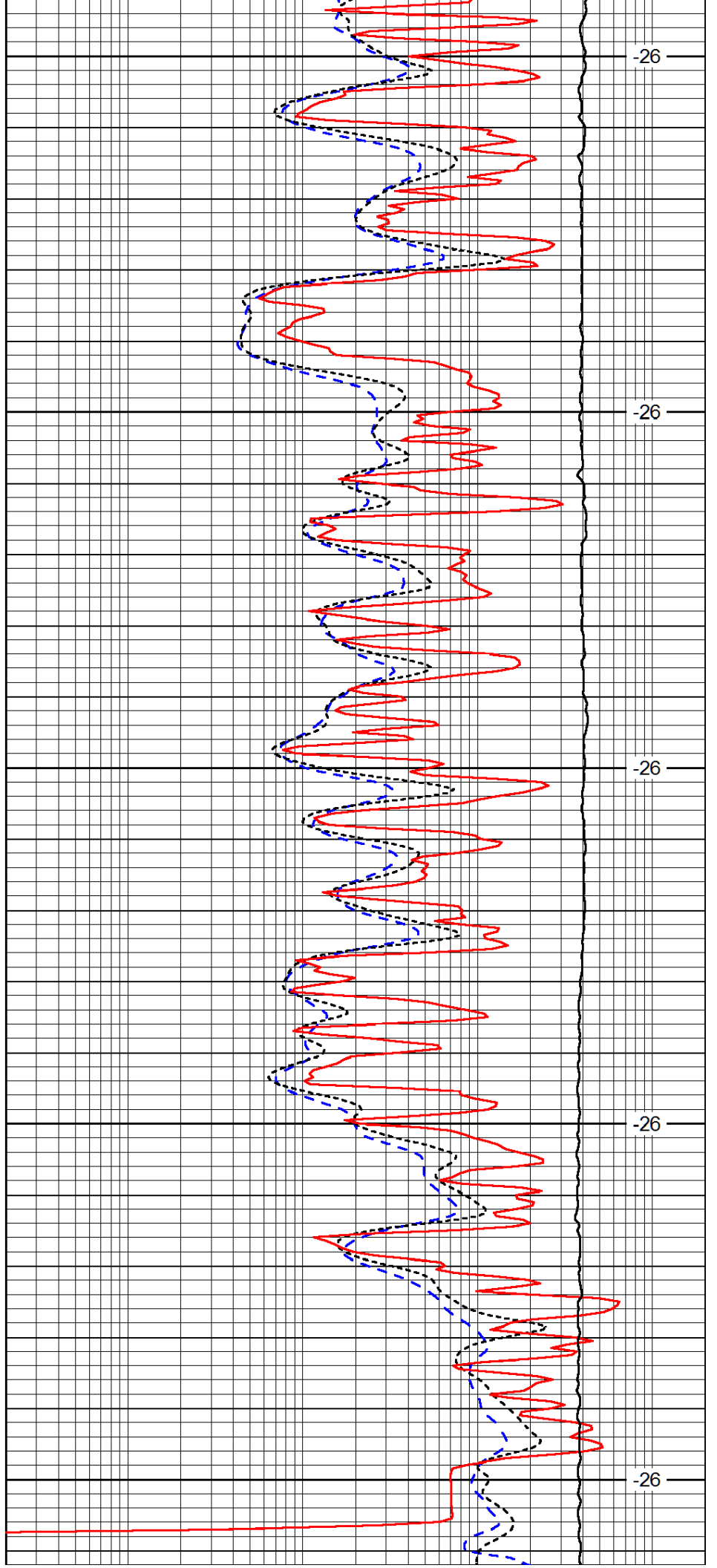
4400

4450

4500

4550

4600



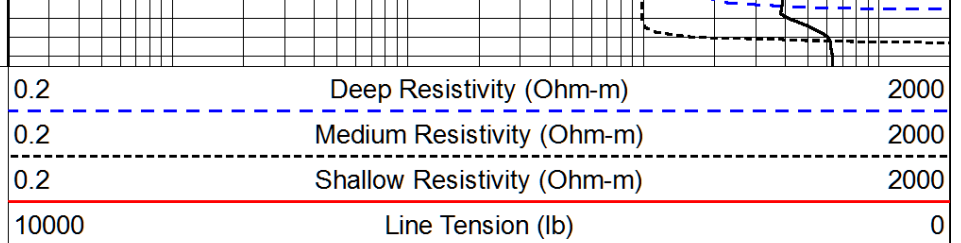
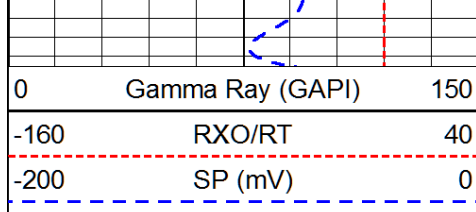
-26

-26

-26

-26

-26



LSPD
(ft/min)