



# PALADIN

S U R F A C E L O G G I N G

Scale 1:240 (5"=100') Imperial  
Measured Depth Log

Well Name: Girod #1 G&G Support Materials  
API:  
Location: SEC 17 T32S R7E COWLEY CO. KANSAS  
License Number: Region: WILDCAT  
Spud Date: 1/17/2014 Drilling Completed: 1/21/14  
Surface Coordinates: 330' FNL & 330' FWL C NW NW NW

Bottom Hole  
Coordinates:  
Ground Elevation (ft): 1226' K.B. Elevation (ft): 1236'  
Logged Interval (ft): 1550' To: 3450' Total Depth (ft): 3450'  
Formation: MISSISSIPPI LIME  
Type of Drilling Fluid: Water Base

Printed by MUD.LOG from WellSight Systems 1-800-447-1534 www.WellSight.com

## OPERATOR

Company: TAOS RESOURCES OPERATING COMPANY  
Address: 1455 WEST LOOP, SUITE 600  
HOUSTON, TEXAS 77027

## GEOLOGIST

Name: MARK SEELY  
Company: TAOS RESOURCES OPERATING COMPANY  
Address: 1455 WEST LOOP, SUITE 600  
HOUSTON, TEXAS 77027

## Equipment

TRAILER: PS6  
iBALL 5172

## Comments

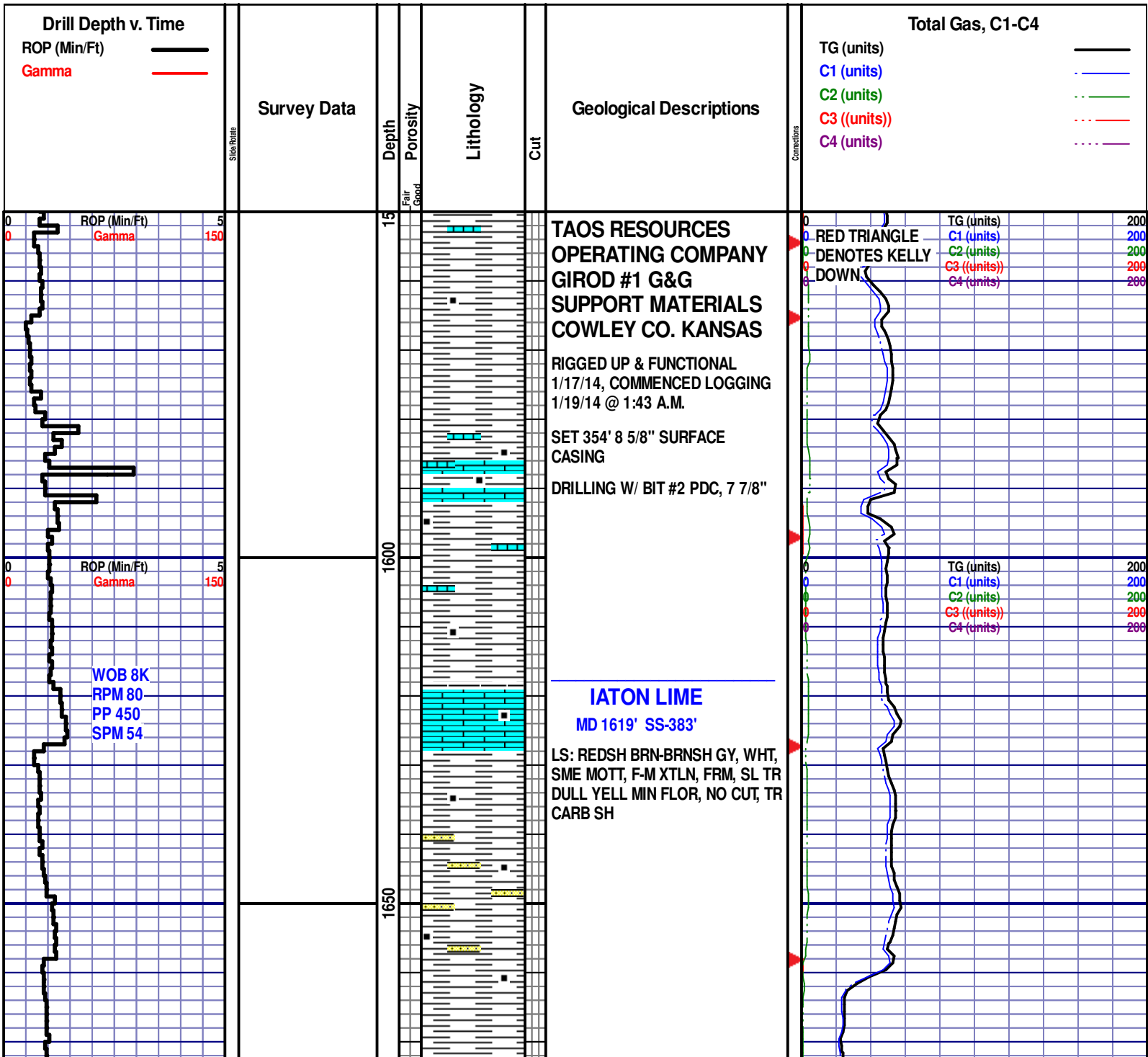
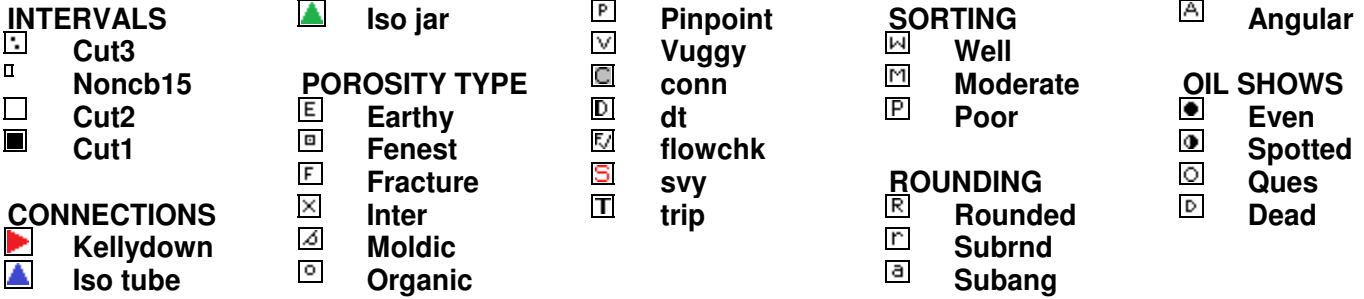
One man start date: 1/17/2014  
One man release date: 1/21/14

LOGGER: DAVID HOGAN  
RIG: VAL RIG 3

### ROCK TYPES



### OTHER SYMBOLS



WT 8.6  
VIS 68

### STALNAKER MD 1688' -SS -452

SS: WHT-OFF WHT, SEMI-TRNSL, VF-F GR, SBANG-SBRD, SL CALC CMT, NO FLOR, NO CUT, MOD CONS, OCC FRIA CLSTRS, SME CLAY MTX, NO FLOR, NO CUT

SS: OFF WHT-LT GY, VF-F GR, SBANG-SBRD, MOD-MOD WELL CONS, SME MOD HD, FRIA IP, SL CALC, ARG MTX IP, NO FLOR, NO CUT

SS: LT GY-OFF WHT, S&P, VF-F GR, MOD CONS, MOD-P SRTD, SME FRIA, MOD HD, ARG/CALC MTX, NO FLOR, NO CUT

LS: MOTT, BRNSH GY, CRM, TAN, VF XTLN, SBDNS, OCC MOD HD, UNIFORM MOD BRI MIN YELL FLOR, NO CUT

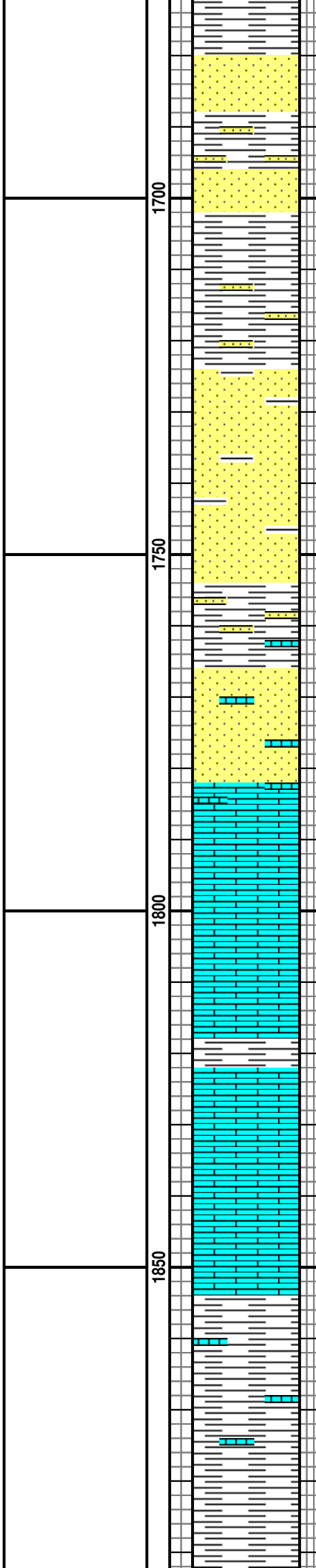
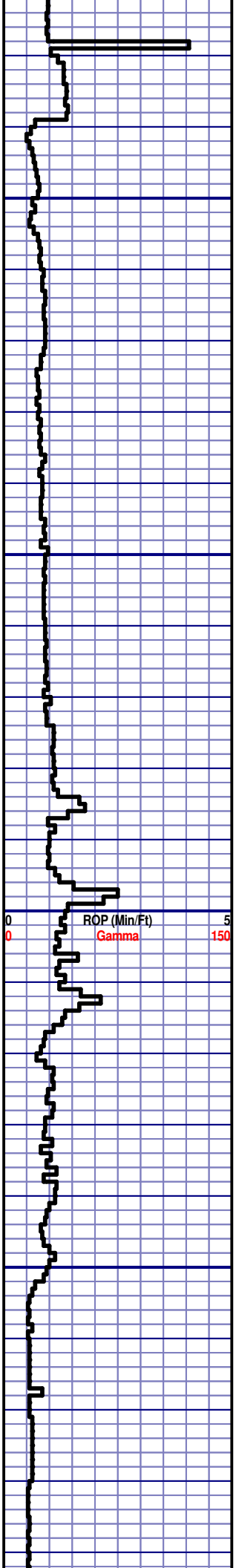
LS: MOTT, OFF WHT, CRM, TAN, VF XTLN, SBDNS, OCC MOD HD, BLKY, CHNKY, MOD BRI MIN YELL FLOR, NO CUT

SH: PRED MED GY, VF-F TXT, FRM-OCC MOD HD, BLKY, CHNKY, SBPLTY, CALC. LMY IP, SL TR PYR

MUD @ 1764'  
WT 8.6  
VIS 59  
PV 5  
yP 14  
GEL 8/25  
FIL 7.2  
SOL 2.1  
CK 2/32  
CL 1000  
CA 40

TG (units)	200
C1 (units)	200
C2 (units)	200
C3 (units)	200
C4 (units)	200

ROP (Min/Ft) 5  
Gamma 150

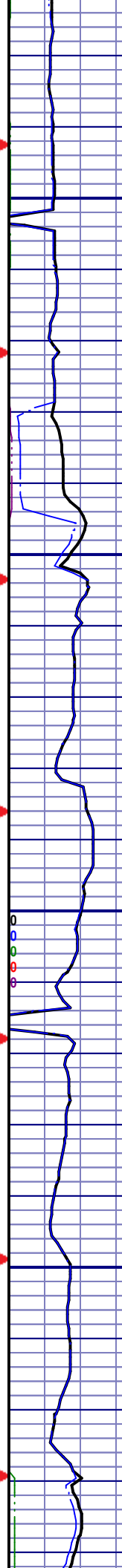


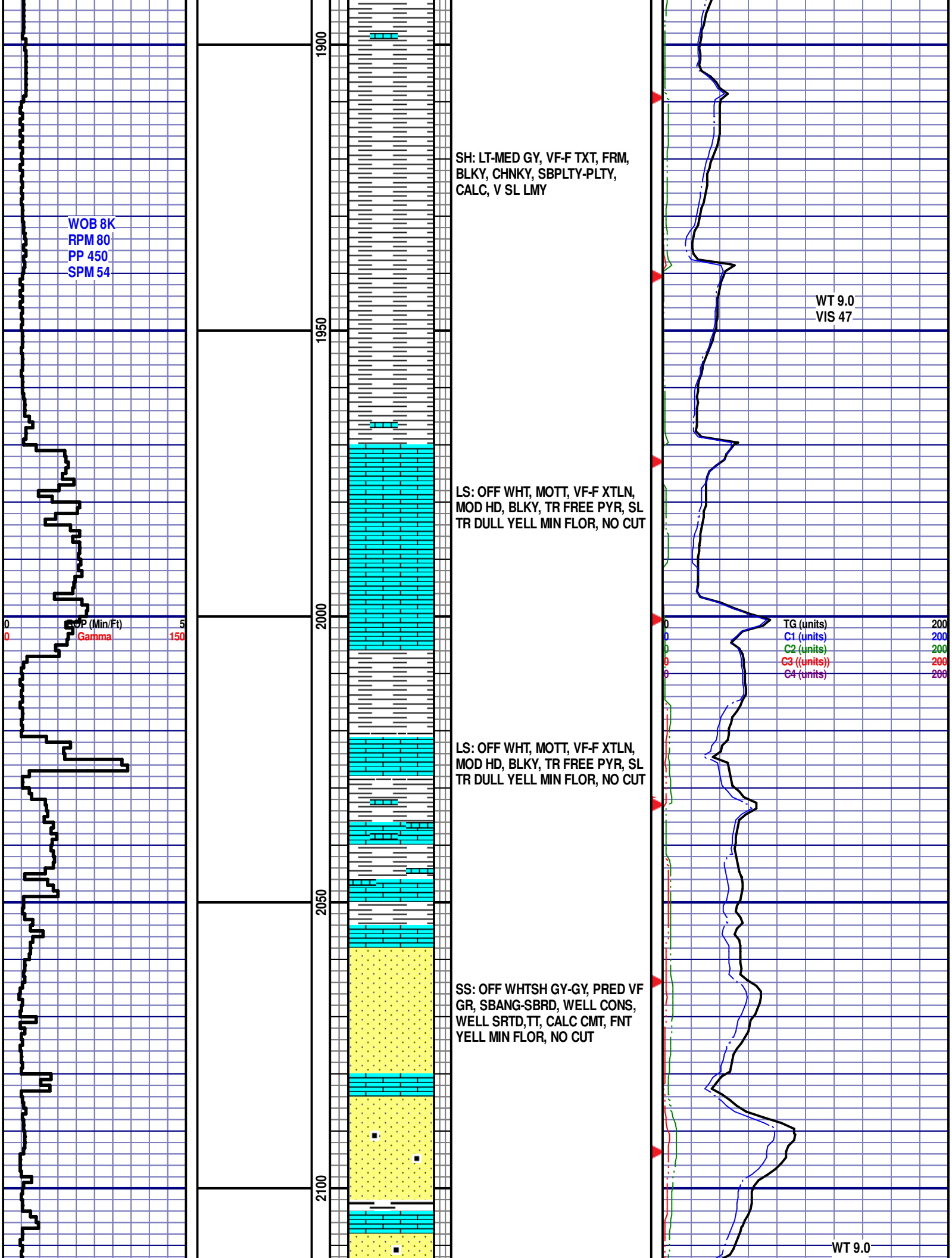
1700

1750

1800

1850





WOB 8K  
RPM 80  
PP 450  
SPM 54

SS: OFF WHTSH GY-GY, PRED VF GR, SBANG-SBRD, WELL CONS, WELL SRTD,TT, CALC CMT, OCC BLK CARB SH, NO FLOR, NO CUT

BYPASSING POSSUM BELLY

SS: LT GY, GY, WHTSH GY, VF-F GR, SME MED GR, SBANG-SBRD, MOD SRTD, MOD -MOD WELL CONS, HD, TT, CALC CMT, TR GLAUC, SL ARG, SL TR LS, TR DULL YELL MIN FLOR, NO CUT

**KC LIME**  
MD 2198' -SS 962'

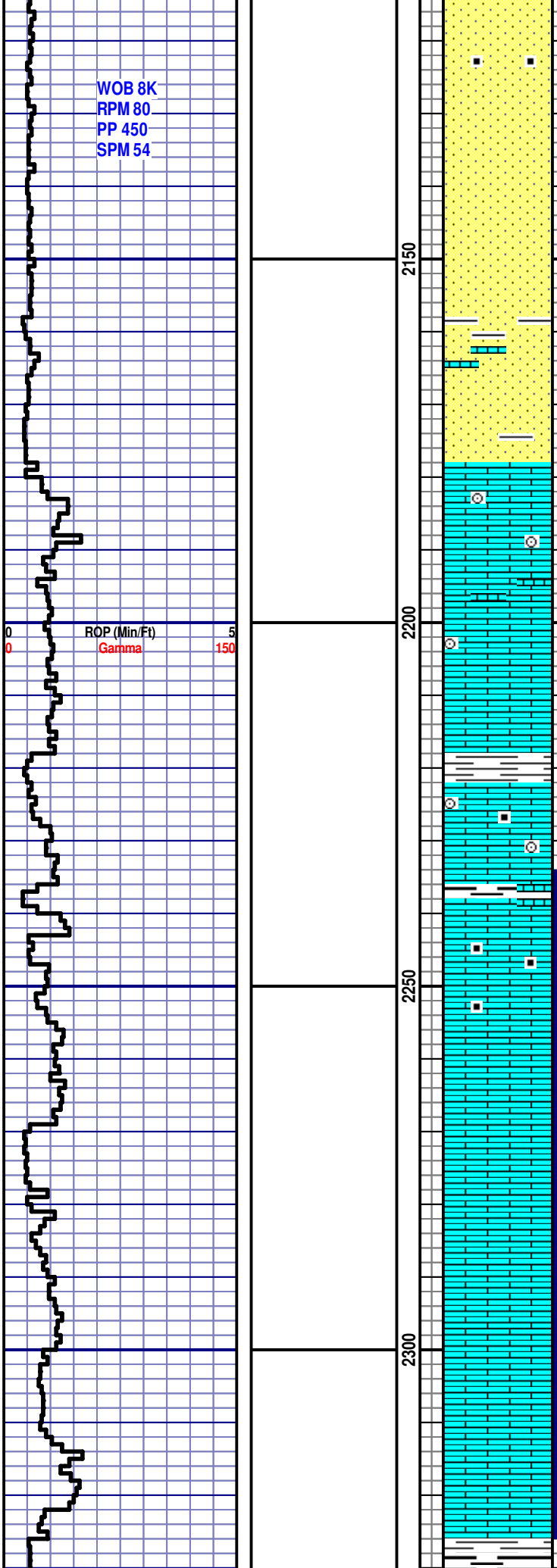
LS: CRM-MOTT, TAN, VF-F XTLN, MOD FRM, SME CHLKY, TR CRIN, SCAT MOD BRI GRNSH YELL FLOR, NO CUT

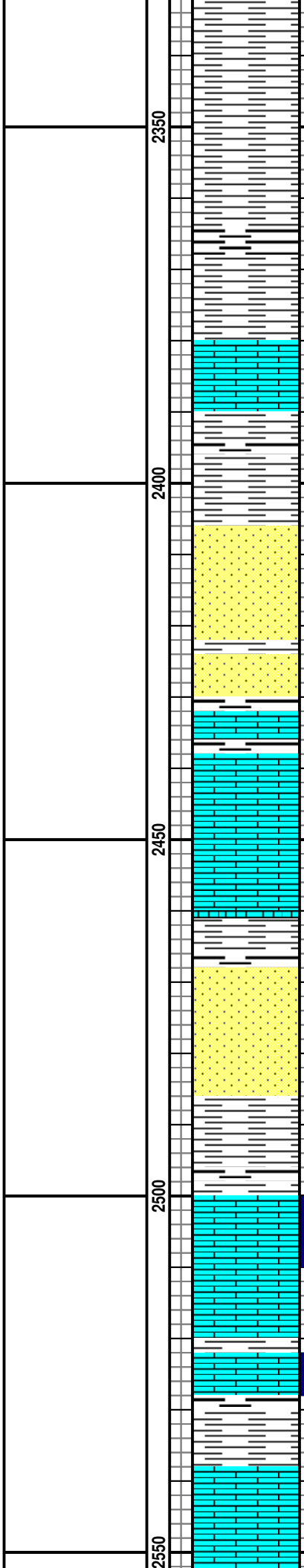
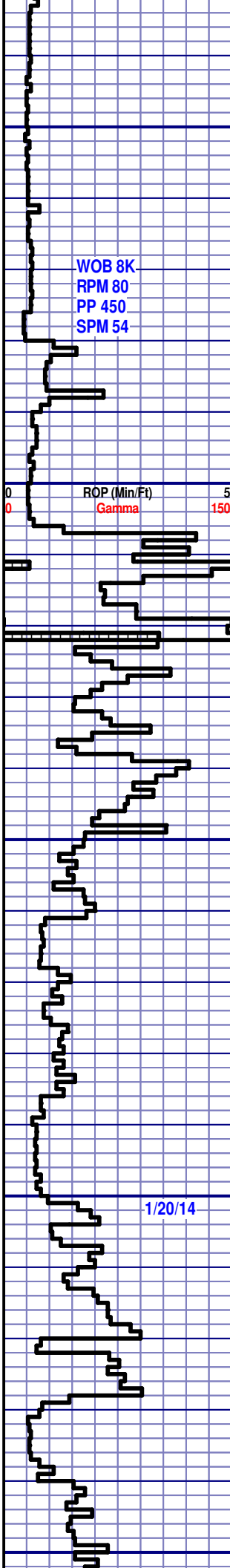
TG (units) 200  
C1 (units) 200  
C2 (units) 200  
C3 (units) 200  
C4 (units) 200

LS: CRM-MOTT, TAN, VF-F XTLN, MOD FRM, SME CHLKY, TR CRIN, SCAT MOD BRI YELL FLOR, GOOD PETRO ODOR, SLOW STRMG CUT W/YELL STRMRS, MOD BRI YELLSH WHT RESID RNG

SH GAS  
346u

LS: CRM - MOTT, TAN, OFF WHT, VF-F XTLN, SL TR MED XTLN, SME SL CHLKY, TR FOSS(CRIN), FNT PETRO ODOR, V SCAT MOD BRI YELL FLOR, MOD YELLSH WHT RESID, MOD BRI YELLSH WHT RESID RNG





SH: MED-OCC DK GY, SME BLK, VF-F TXT, FRM, SBBLKY, SBPLTY-PLTY, SL LMY, CALC, TR CARB

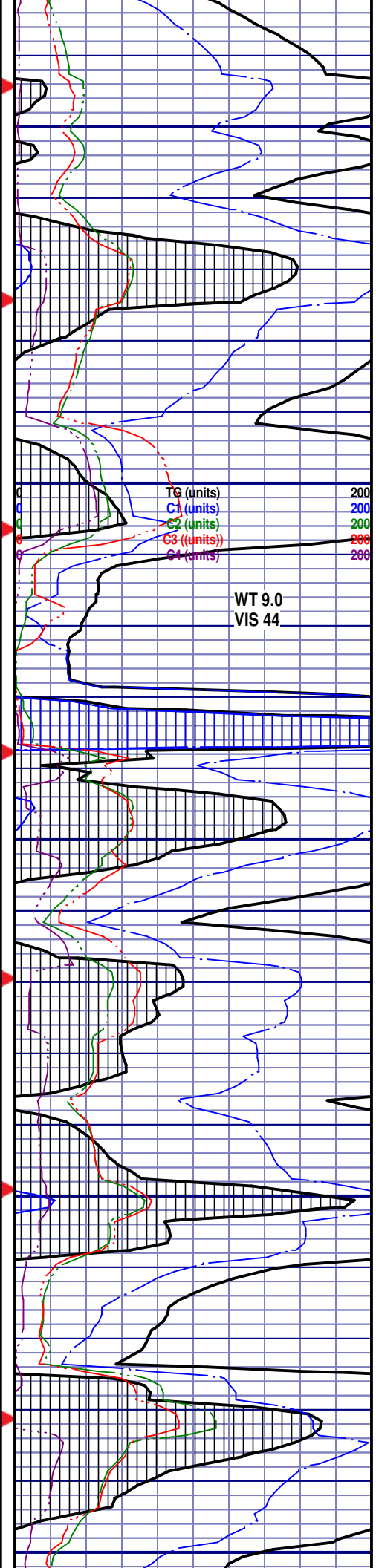
SS: OFF WHT-LT GY, VF-F GR, TR MED GR, SBANG-SBRD, MOD HD, SME FRIA, MOD SRTD, MOD CONS CLSTRS, CALC CMT, ARG IP, SL TR YELL MIN FLOOR, NO CUT

**MARMATON**  
MD 2433' SS-1197'

LS: CRM-BUFF, TAN, GYSH WHT, MICR-VF XTLN, SL ARG, MOD HD, V FNT PETRO ODOR, SCAT BRI YELL FLOOR, TR DULL MIN FLOOR, NO CUT

SS: GRYSH WHT, GY, VF-F GR, SBANG-SBRD, MOD CONS, MOD SRTD, ARG MTX, SL CALC, IMBDD PYR, SL LMY, V FNT PETRO ODOR, SCAT MOD BRI YELL FLOOR, NO CUT

LS: CRM-BUFF, MOTT, VF-F XTLN, FRM-OCC CHLKY, SME ARG, SL TR FNT PETRO ODOR, SL TR MOD BRI YELL FLOOR, FNT WHT RESID RNG



WOB 8K  
RPM 80  
PP 450  
SPM 54

ROP (Min/Ft) 5  
Gamma 150

LS: CRM-BUFF, MOTT, VF-F XTLN,  
FRM-OCC CHLKY, SME ARG, SL  
TR FNT PETRO ODOR, SL TR MOD  
BRI YELL FLOR, NO CUT

**CHEROKEE**  
MD 2571' SS- 1335'

SH: LT-DK GY, SME BLK, VF-F  
TXT, SME SMTH, BLKY, CHNKY,  
SBPLTY, FRM, TR CARB, TR PYR

LS: CRM-BUFF, LT BRN, MICR-VF  
XTLN, FRM-OCC MOD HD, TR PYR

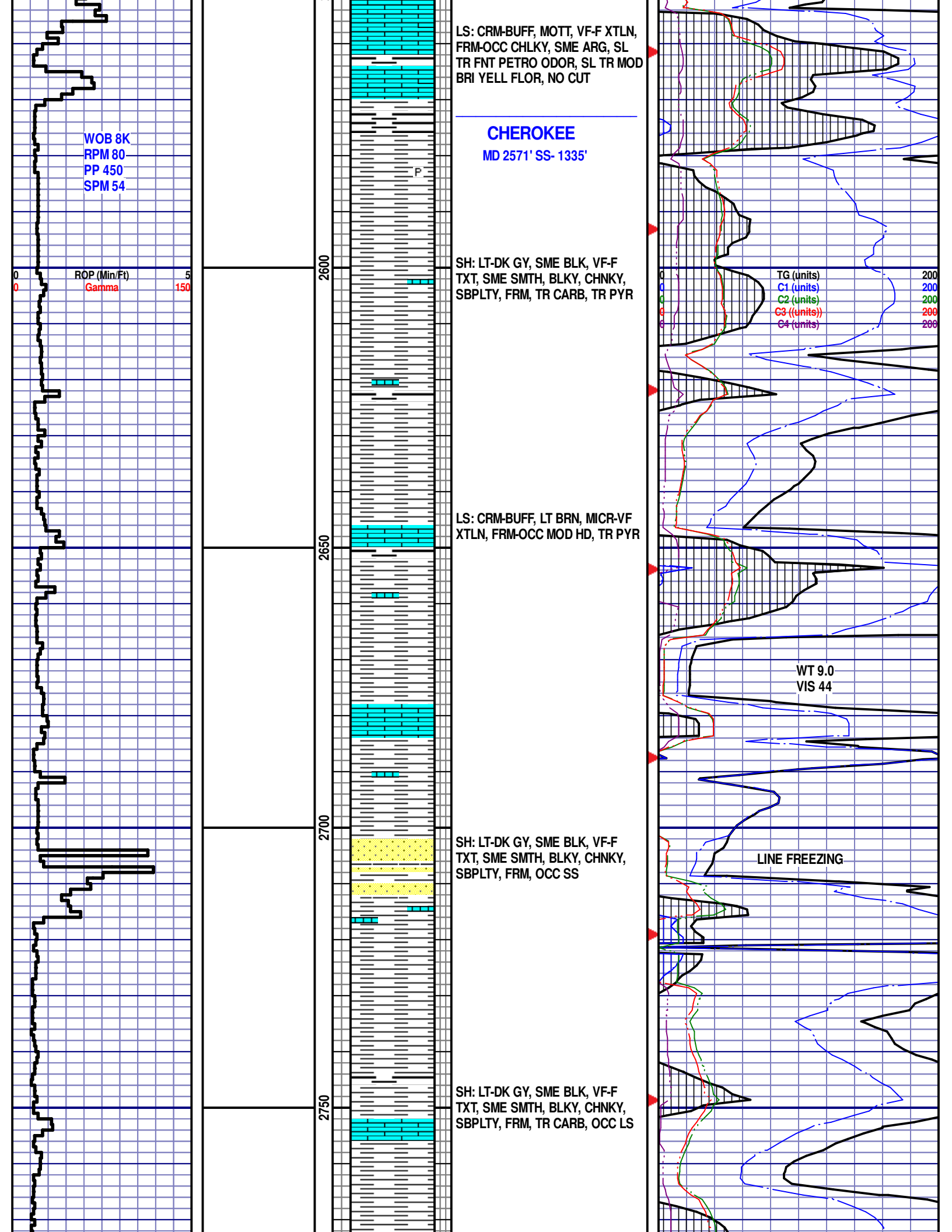
SH: LT-DK GY, SME BLK, VF-F  
TXT, SME SMTH, BLKY, CHNKY,  
SBPLTY, FRM, OCC SS

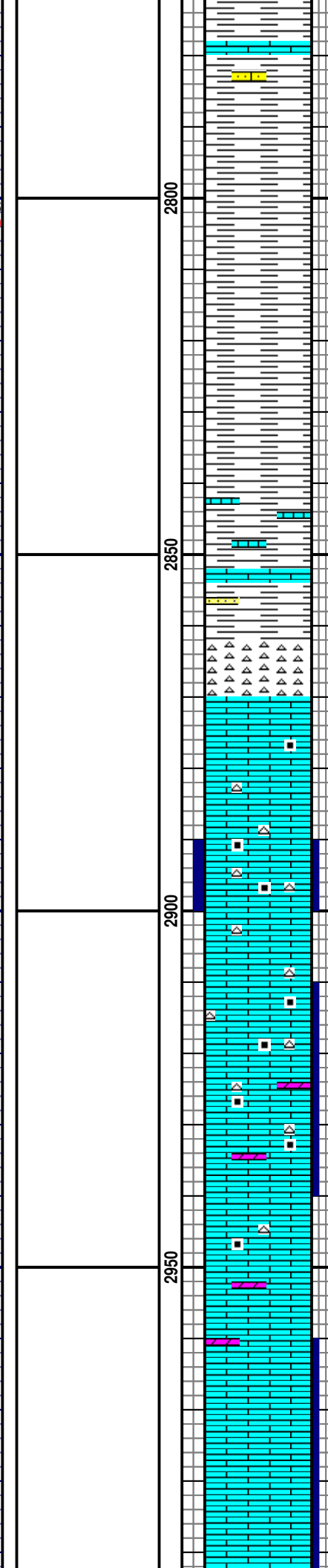
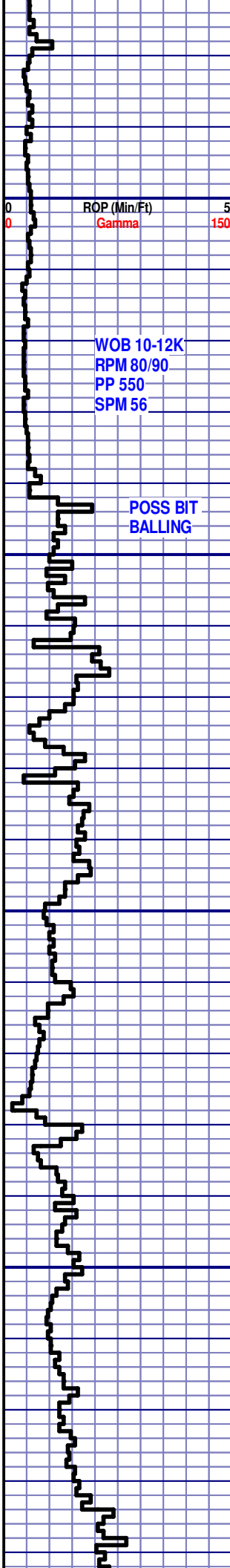
SH: LT-DK GY, SME BLK, VF-F  
TXT, SME SMTH, BLKY, CHNKY,  
SBPLTY, FRM, TR CARB, OCC LS

TG (units) 200  
C1 (units) 200  
C2 (units) 200  
C3 (units) 200  
C4 (units) 200

WT 9.0  
VIS 44

LINE FREEZING





SH: LT-DK GY, SME BLK, VF-F  
 TXT, SME SMTH, PRED FRM,  
 BLKY, CHNKY, PLTY, CALC, SL TR  
 SS, TR LS

ROP (Min/Ft) 5  
 Gamma 150

WOB 10-12K  
 RPM 80/90  
 PP 550  
 SPM 56

POSS BIT  
 BALLING

**MISS CHAT**

MD 2863' SS-1627'

CHT: WHT-OFF WHT, SEMI TRNSL,  
 F-OCC MED XTLN, TRIP, IND, LMY,  
 NO FLOR, NO CUT

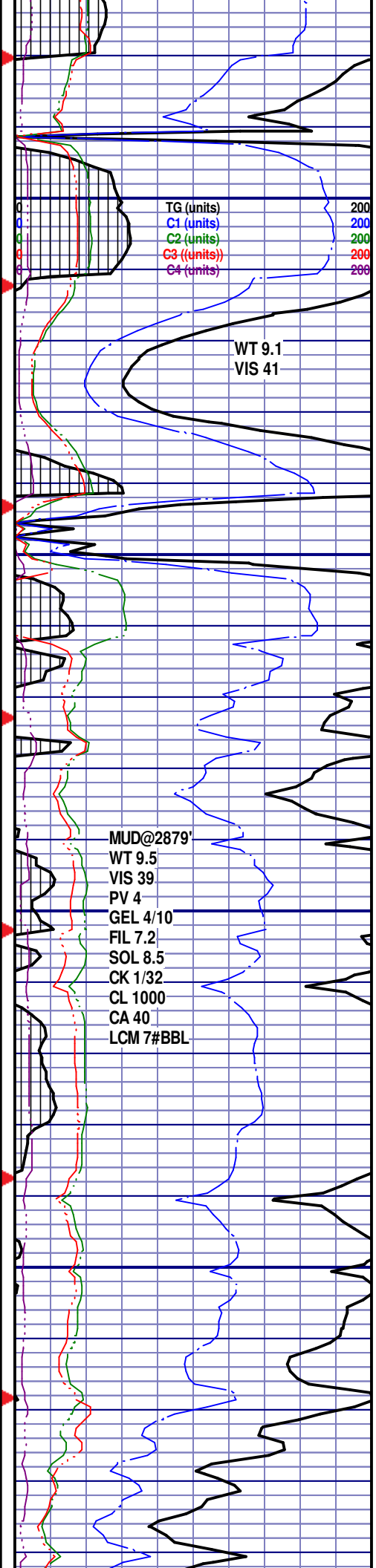
**MISS LIME**

MD 2874' SS-1638'

LS: WHT-OFF WHT, CRM, VF-F  
 XTLN, TR INTXTLN POR, HD,  
 SBDNS, V SL TR FNT YELL FLOR,  
 FNT YELL RNG CUT

LS: OFF WHT-TAN, SL MOTT,  
 BRNSH GY, LT BRN, MICR-VF  
 XTLN, BLKY-CHNKY, SL TR CHT,  
 BCMG SL DOLMT'C, TR CALC'T  
 FILLED FRAC'S, V SPTY YELL  
 FLOR, SL RNG CUT W/CRUSH  
 CUT

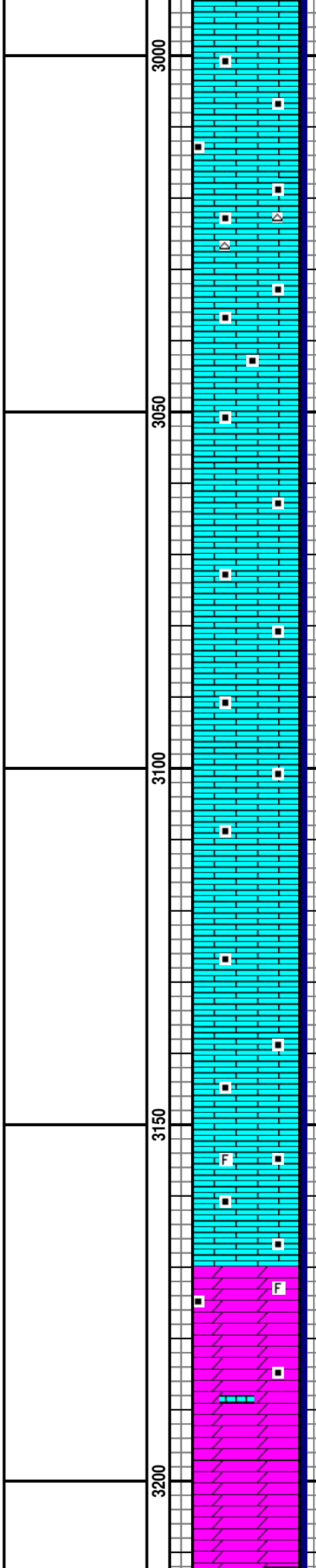
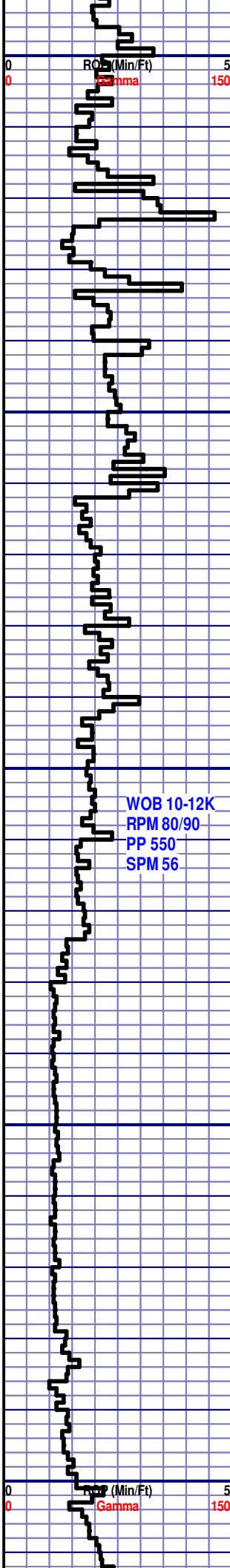
LS: BRN- GY, BRNSH GY, MICR-VF  
 XTLN, BLKY, SL DOLMT'C, TR  
 CALC'T FILLED FRACS, TR DULL  
 YELL MIN FLOR, V SLO DVLPMNT,  
 MLKY WHT RESID RNG



TG (units) 200  
 C1 (units) 200  
 C2 (units) 200  
 C3 (units) 200  
 C4 (units) 200

WT 9.1  
 VIS 41

MUD@2879'  
 WT 9.5  
 VIS 39  
 PV 4  
 GEL 4/10  
 FIL 7.2  
 SOL 8.5  
 CK 1/32  
 CL 1000  
 CA 40  
 LCM 7#BBL



LS: BRN- BRNSH GY, MICR-VF XTLN, BLKY, SBPLTY, TR CALCT FILLED FRACS, TR CHT, CARB IP, FAIR PETRO ODOR, TR DULL YELL MIN FLOR, V SLO DVLPMNT, MLKY WHT RESID RNG

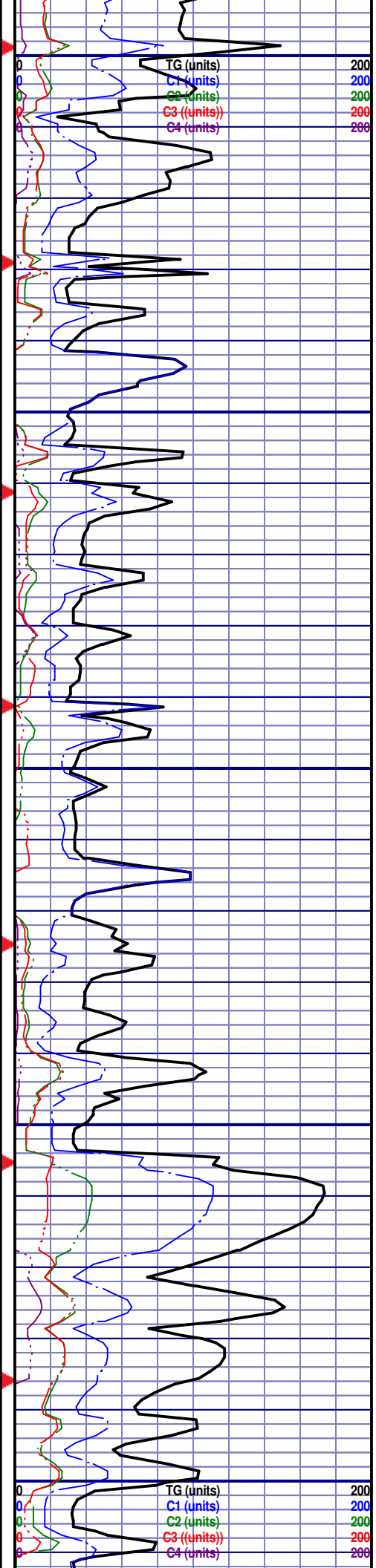
LS: LT BRN-BRN, DK CRM, MICR-VF XTLN, MOD HD -BRITT, CARB, FNT PETRO ODOR, VV SLO DVLPMNT, FNT TO MOD BRI YELLSH WHT RESID RNG, LITTLE TO NO FLOR

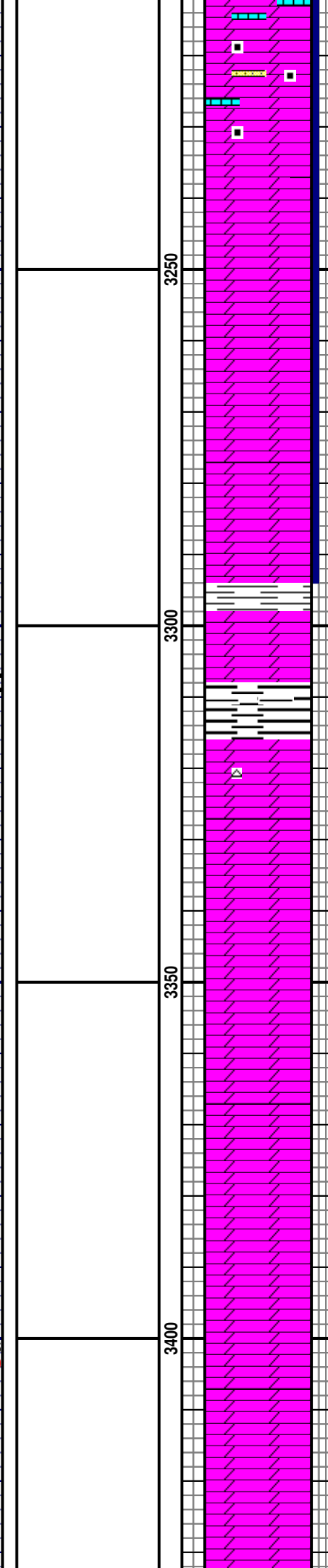
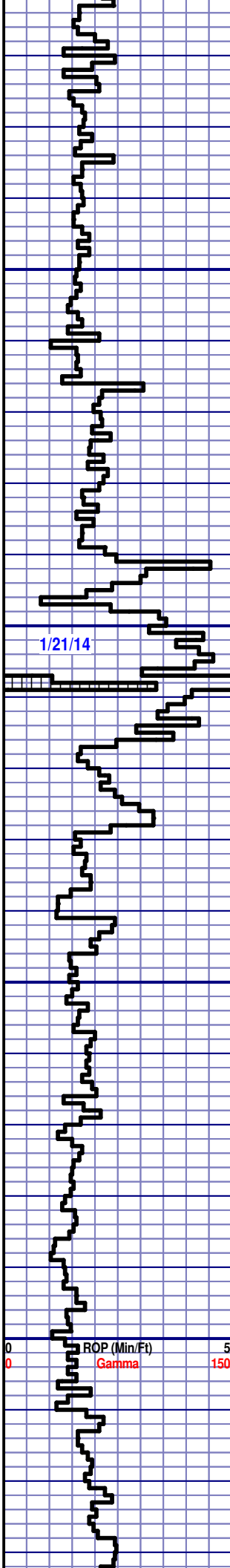
LS: LT BRN-BRN, DK CRM, MICR-VF XTLN, MOD HD, CARB, FNT PETRO ODOR, VV SLO DVLPMNT, FNT TO MOD BRI YELLSH WHT RESID RNG, LITTLE TO NO FLOR

LS: BRN-BRNSH GY, SME MED GY, MICR-VF XTLN, HD-SBDNS, BRITT IP, TR FOSS FRAG, TR CALCT FILLED FRACS, SL FNT GRN TINGE TO WHOLE SAMPLE, FAIR PETRO ODOR, FNT YELLSH WHT RNG CUT, V SLO DVLPMNT

DOL: PRED DK BRN, BRN, TR CRM, MICR-VF XTLN, DNS, TR CALCT FILLED FRAC'S, TR FNT YELLSH GRN FLOR, FAIR PETRO ODOR, MOD BRI WHT RESID RNG

WOB 10-12K  
RPM 80/90  
PP 550  
SPM 56





DOL: PRED DK BRN, BRN, TR CRM, MICR-VF XTLN, DNS, TR CALCT FILLED FRAC'S, TR FNT YELLSH GRN FLOR, FAIR PETRO ODOR, MOD BRI WHT RESID RNG

DOL: PRED DK BRN, BRN, TR CRM, MICR-VF XTLN, DNS,, TR FNT YELLSH GRN FLOR, FAIR PETRO ODOR, FNT YELLSH WHT RESID RNG

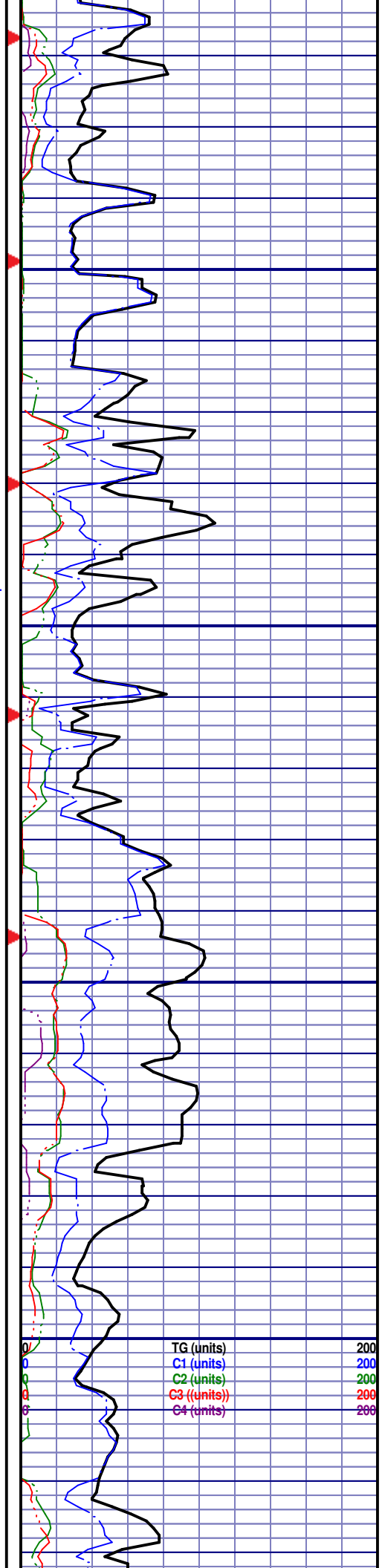
**KINDERHOOK**  
MD 3295' SS-2059'

**WOODFORD**  
MD 3309' SS-2073'

**ARBUCKLE**  
MD 3316' SS-2080'

DOL: CRM-TAN, VF-F XTLN, FRM-MOD HD, SME IND, SUC-OCC MICROSUC, TR MICPYR, TR CHT, PYR FILLED FRAC'S, UNIFORM LT YELL MIN FLOR, NO CUT

DOL: CRM-TAN, TRNSL, VF-F XTLN, FRM-MOD HD, SME IND, SUC-OCC MICROSUC, TR MICPYR, PYR FILLED FRAC'S, UNIFORM LT YELL MIN FLOR, NO CUT



1/21/14



3450



TD @ 6:23A.M. 1/21/14

