



Weatherford

CEMENT BOND LOG

COMPANY

TAOS RESOURCES OPERATING COMPANY, LLC

WELL

GIROD NO.1

FIELD

WILDCAT

PROVINCE/COUNTY

COWLEY

COUNTRY/STATE

USA/KANSAS

LOCATION

330' FNL & 330' FWL

SEC

TWP

RGE

Other Services

Latitude

Longitude

API Number

15-035-24553

Permanent Datum G. L. Elevation

1365 feet

Log Measured From

KB

Drilling Measured From

KELLY BUSHING

Elevations:

KB 1374.00

DF 1372.00

GL 1365.00

Date

03-FEB-2014

Run Number

ONE

Service Order

785777852

PERFORATION RECORD

Type Log	Depth Driller	Depth Logger	Top Log Interval	Bottom Log Interval	Hole Fluid Type	Hole Fluid Level	Restriction ID	Max Recorded Temp	Well Head Pressure	Well Head Equipment	Time Well Ready	Time Logger Bottom	Unit	Equipment Name	Base	Recorded By	Witnessed By
CBL	3450.00 feet	3388.00 feet	1100.00 feet	3388.00 feet	WBM	0.00 feet	4.960 inches		0.00 psia		1400 inches	1500 5.500 inches	14193	WSS-E	OKC	L.KRAUTLARGER	MR. RAY DOROTHY

REMARKS

CORRELATED TO WEATHERFORD COMPOSTIE DENSITY NEUTRON LOG DATED 21-JAN-2014
DID NOT MAKE GAUGE RING RUN PRIOR TO LOGGING

BOREHOLE RECORD

Last Edited: 03-FEB-2014 15:39

Bit Size inches	Depth From feet	Depth To feet
7.875	354.00	3460.00

CASING / TUBING RECORD

Type	Grade	TypeJoint	Size inches	Depth From feet	Shoe Depth feet	Weight pounds/ft
CASING			5.500	0.00	3450.00	17.00

In interpreting, communicating or providing information and/or making recommendations, either written or oral, as to logs or test or other data, type or amount of material, or Work or other service to be furnished, or manner of performance, or in predicting results to be obtained, the Contractor will give the Company the benefit of the Contractor's best judgment based on its experience and will perform all such Work in a good and workmanlike manner. Any interpretation of test or other data, and any recommendation or reservoir description based upon such interpretations, are opinions based upon inferences from measurements and empirical relationships and assumptions, which inferences and assumptions are not infallible, and with respect to which professional engineers and analysts may differ. ACCORDINGLY ANY INTERPRETATION OR RECOMMENDATION RESULTING FROM THE SERVICES WILL BE AT THE SOLE RISK OF THE COMPANY, AND THE CONTRACTOR CANNOT AND DOES NOT WARRANT THE ACCURACY, CORRECTNESS OR COMPLETENESS OF ANY SUCH INTERPRETATION OR RECOMMENDATION, WHICH INTERPRETATIONS AND RECOMMENDATIONS SHOULD NOT, THEREFORE, UNDER ANY CIRCUMSTANCES BE RELIED UPON AS THE SOLE OR MAIN BASIS FOR ANY DRILLING, COMPLETION, WELL TREATMENT, PRODUCTION OR FINANCIAL DECISION, OR ANY PROCEDURE INVOLVING ANY RISK TO THE SAFETY OF ANY DRILLING ACTIVITY, DRILLING RIG OR ITS CREW OR ANY OTHER INDIVIDUAL. THE COMPANY HAS FULL RESPONSIBILITY FOR ALL DECISIONS CONCERNING THE SERVICES.



MAIN PASS WITH 0 PSI AT SURFACE



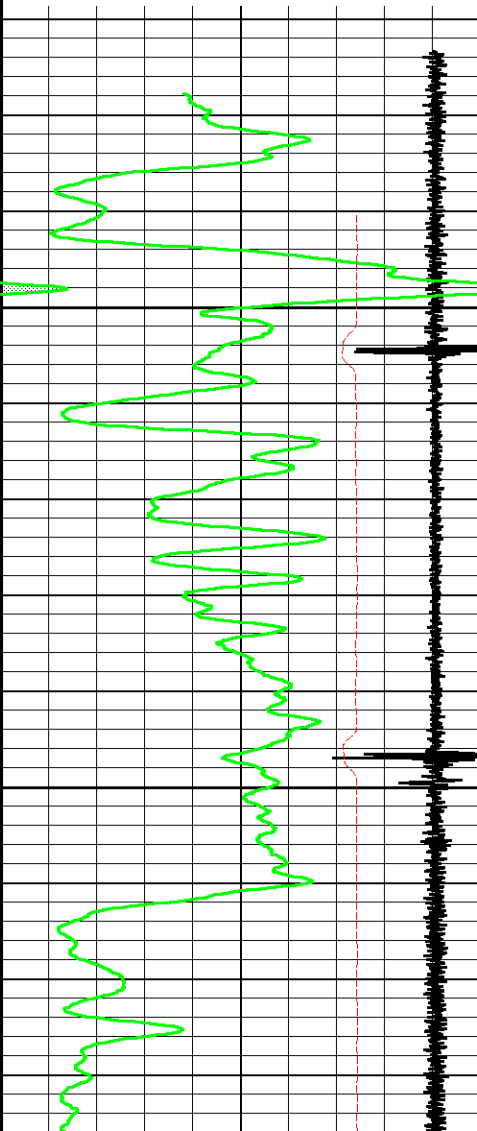
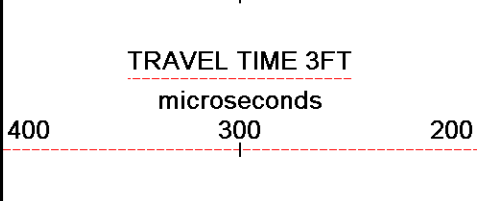
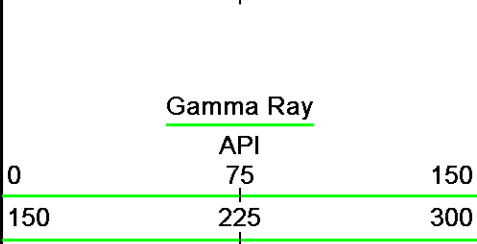
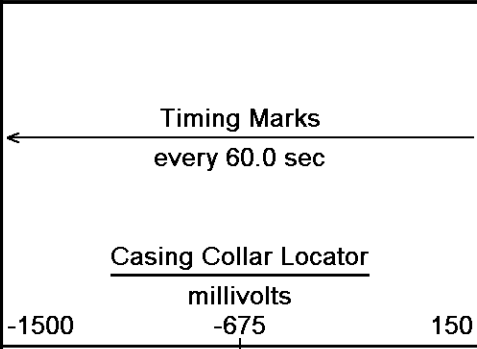
Depth Based Data - Maximum Sampling Increment 2.5cm

Plotted on 03-FEB-2014 21:46

Filename: C:\TAOSFEB14\MP.dta

Recorded on 03-FEB-2014 14:40

System Versions: Logged with 13.08.2005 Plotted with 13.08.2005



Depth in Feet

TENS

Replay Scale 1:240

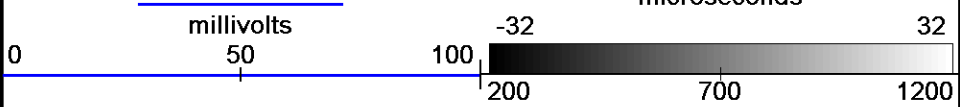
1072

1100

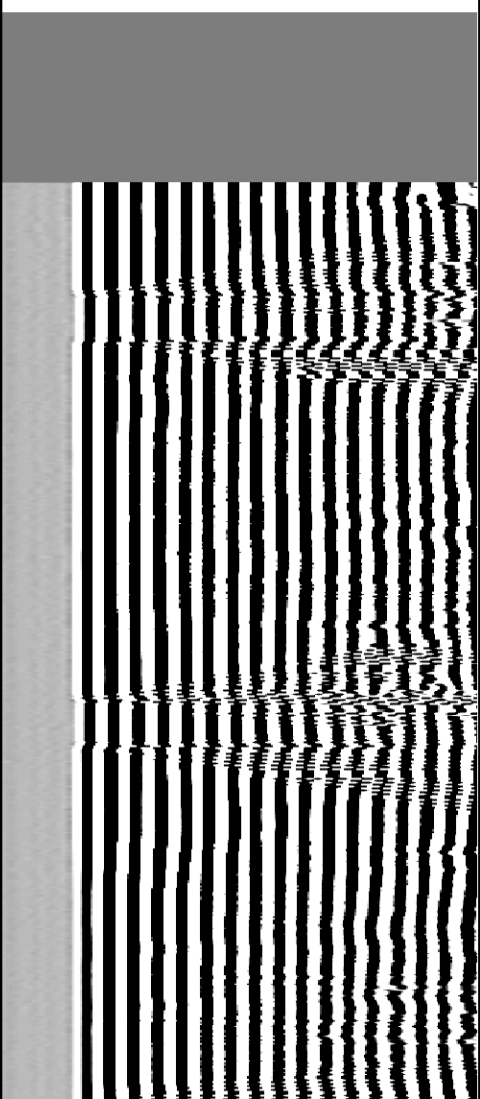
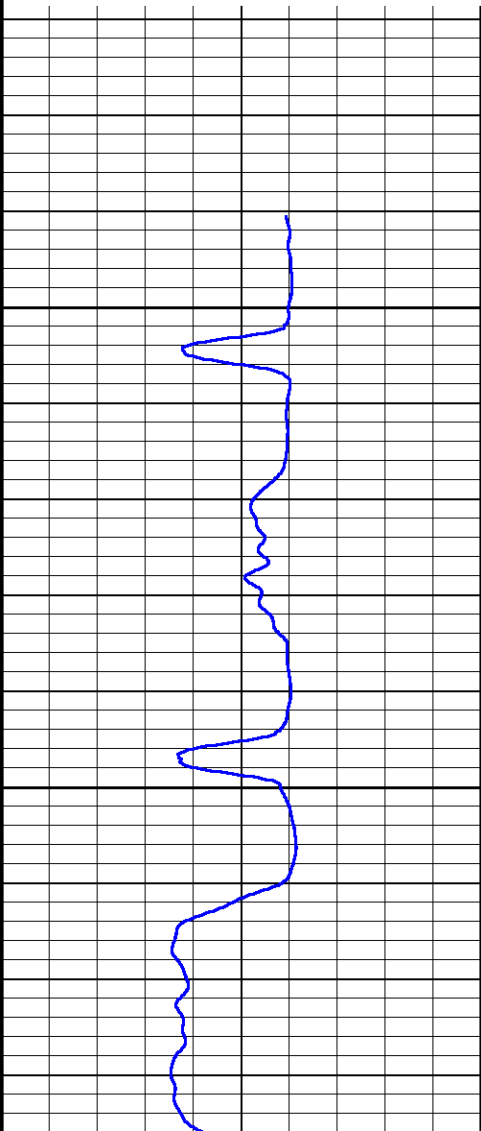
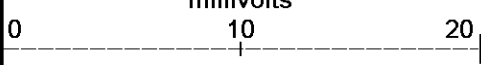
1150

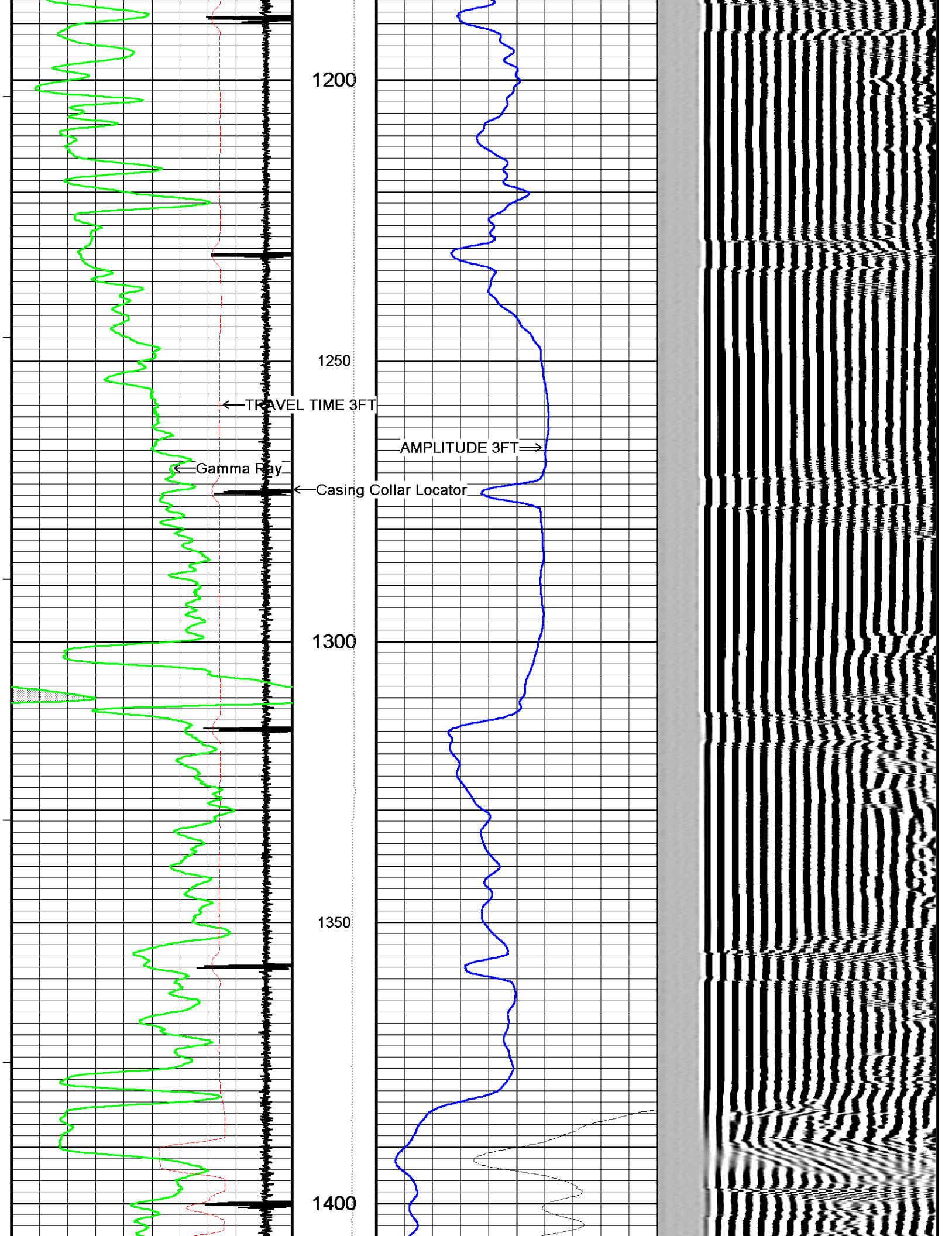
AMPLITUDE 3FT
millivolts

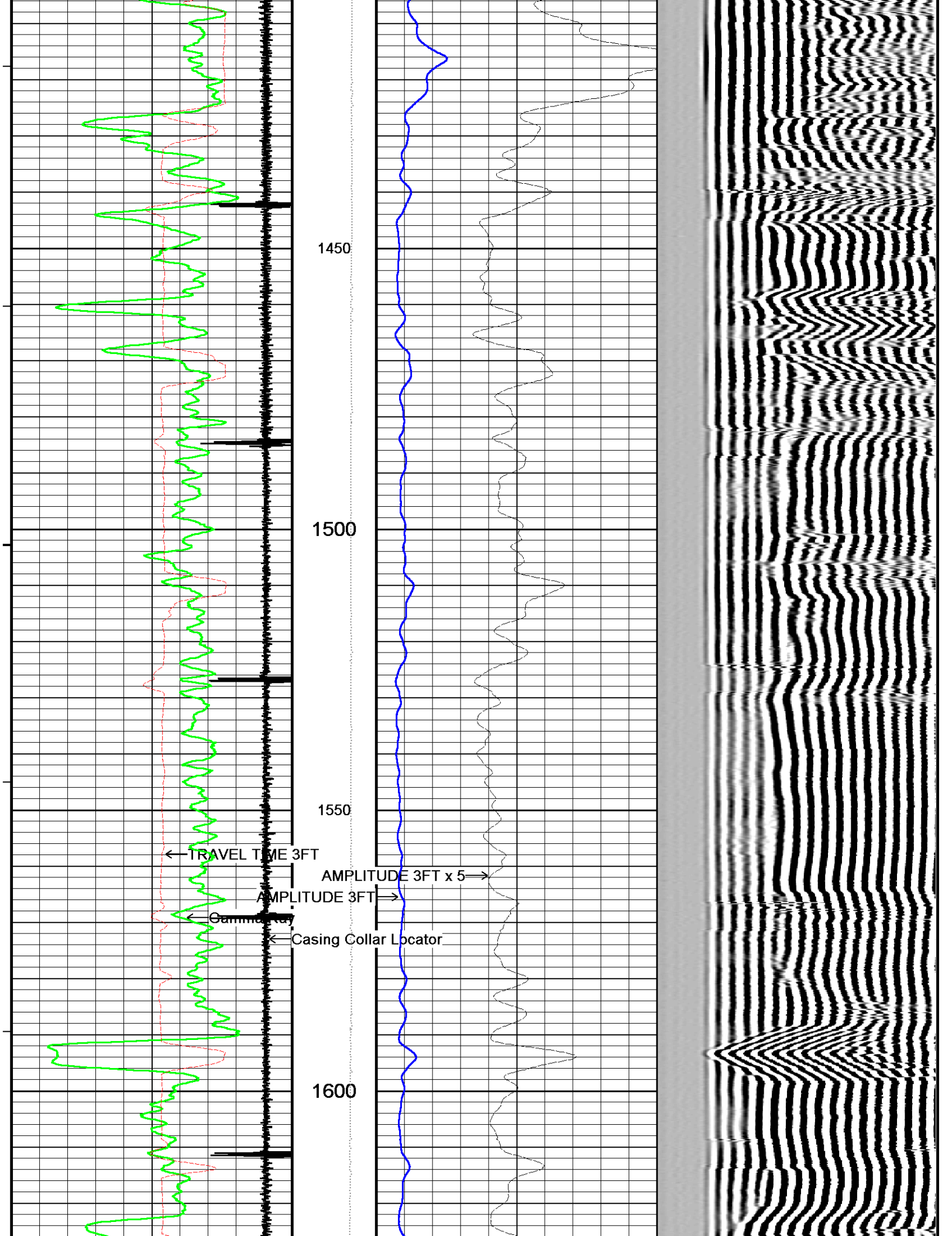
VARIABLE DENSITY 5FT
microseconds

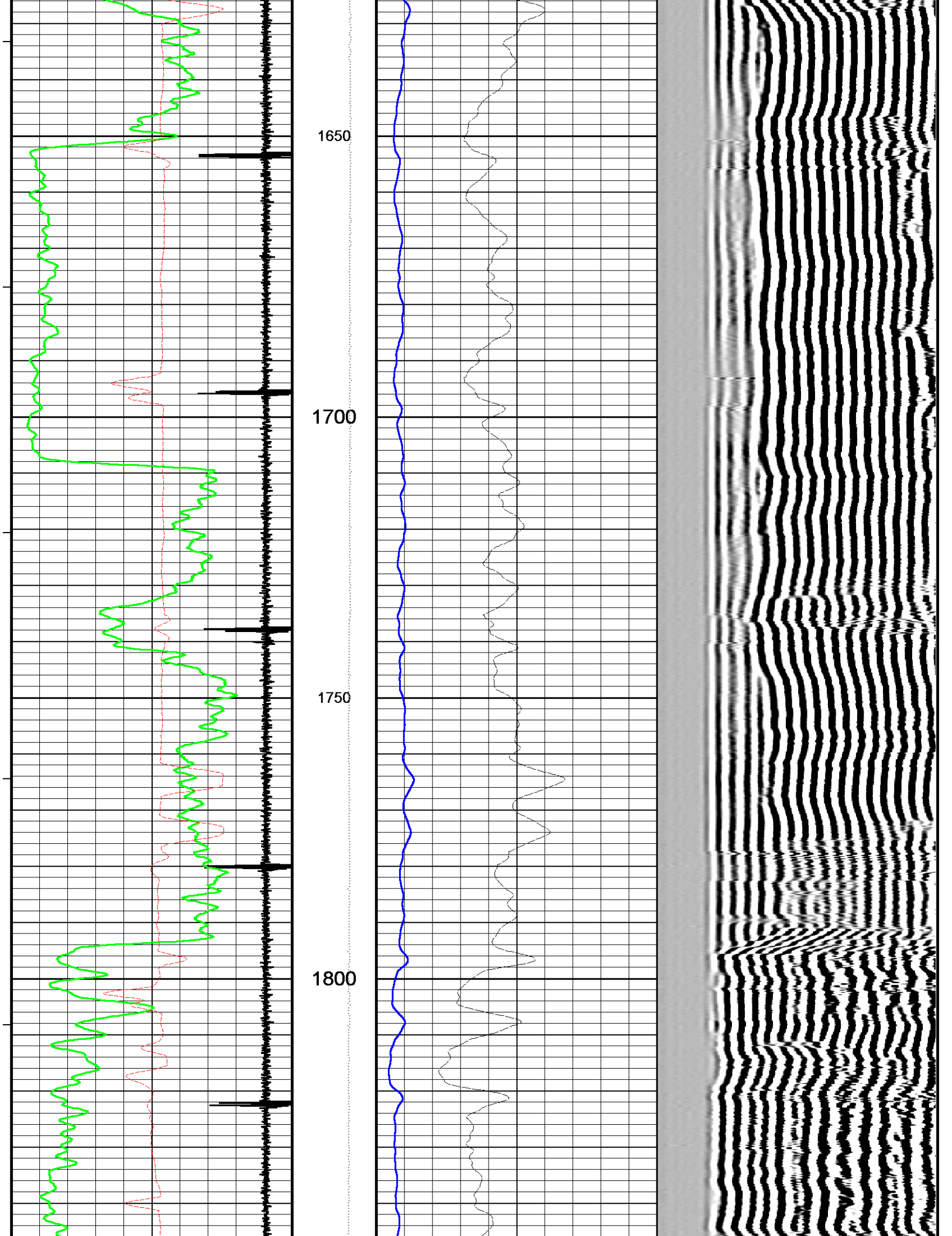


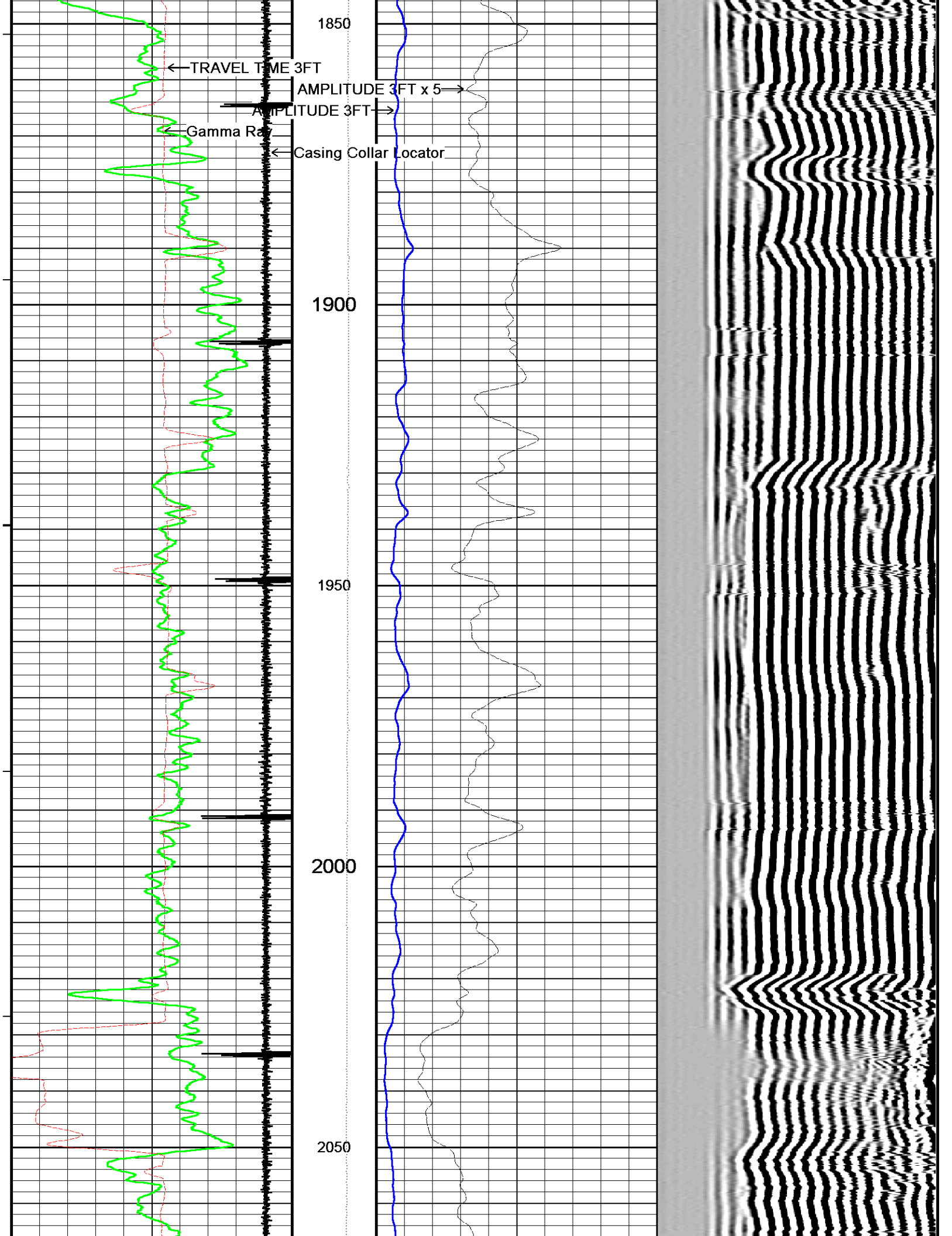
AMPLITUDE 3FT x 5
millivolts

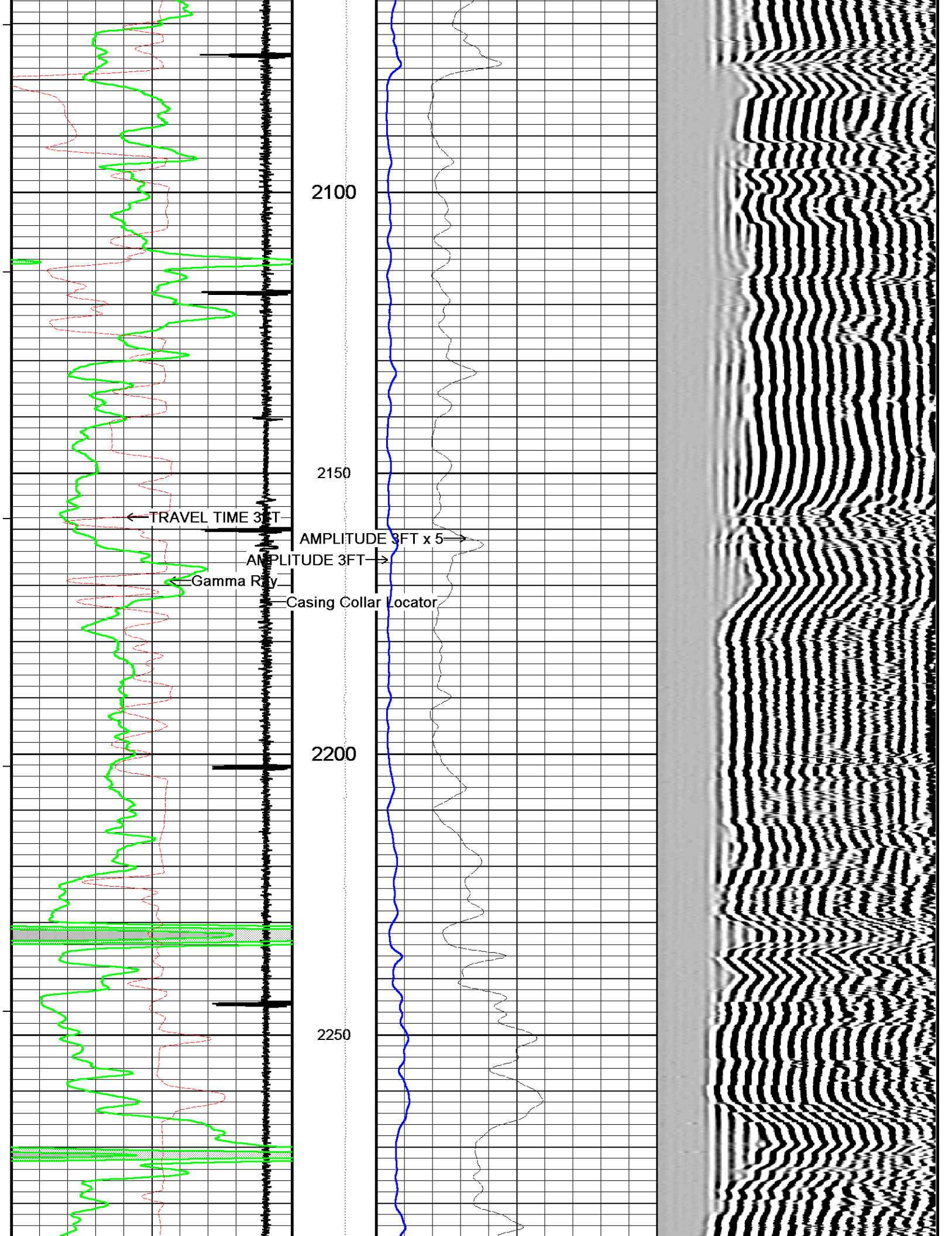


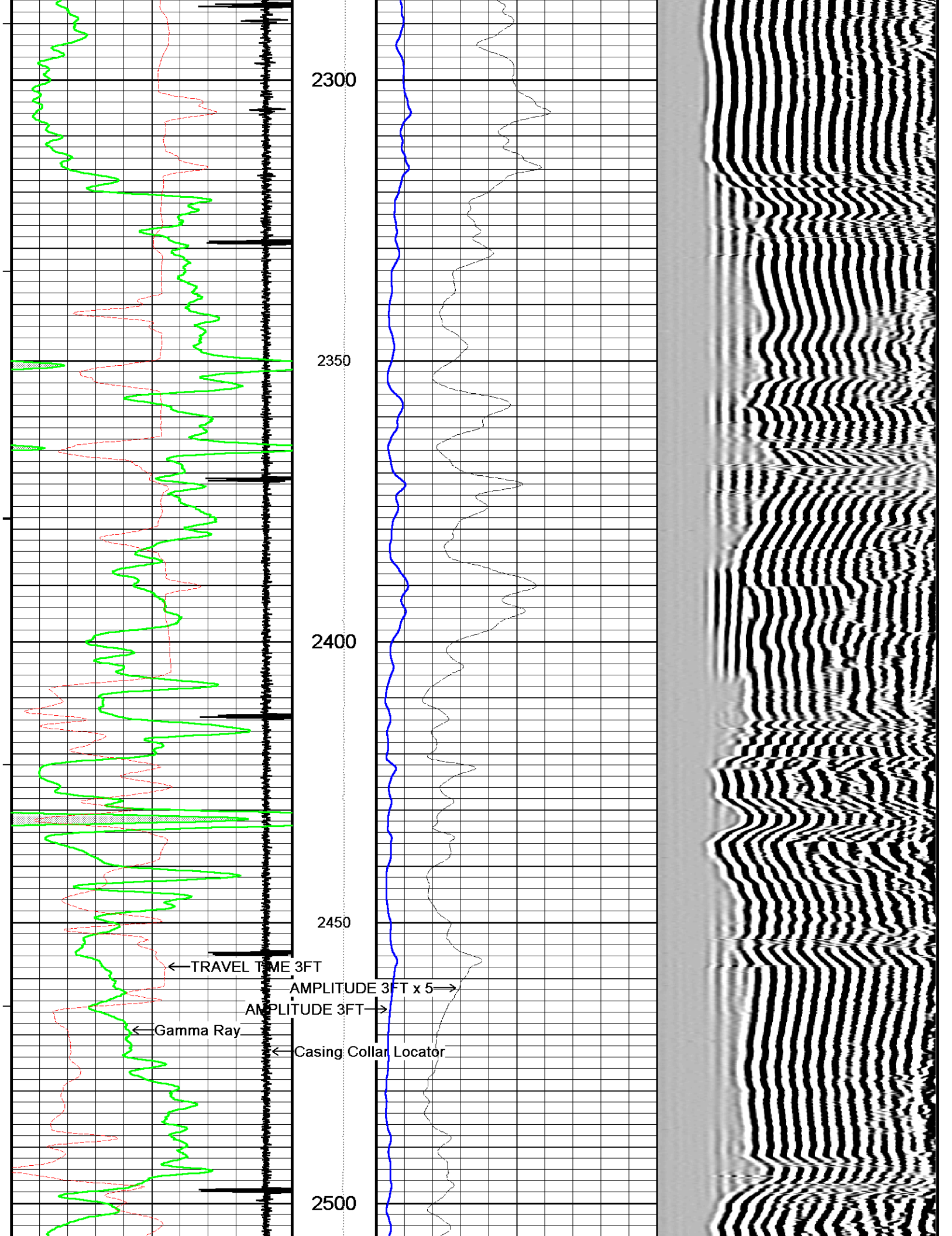


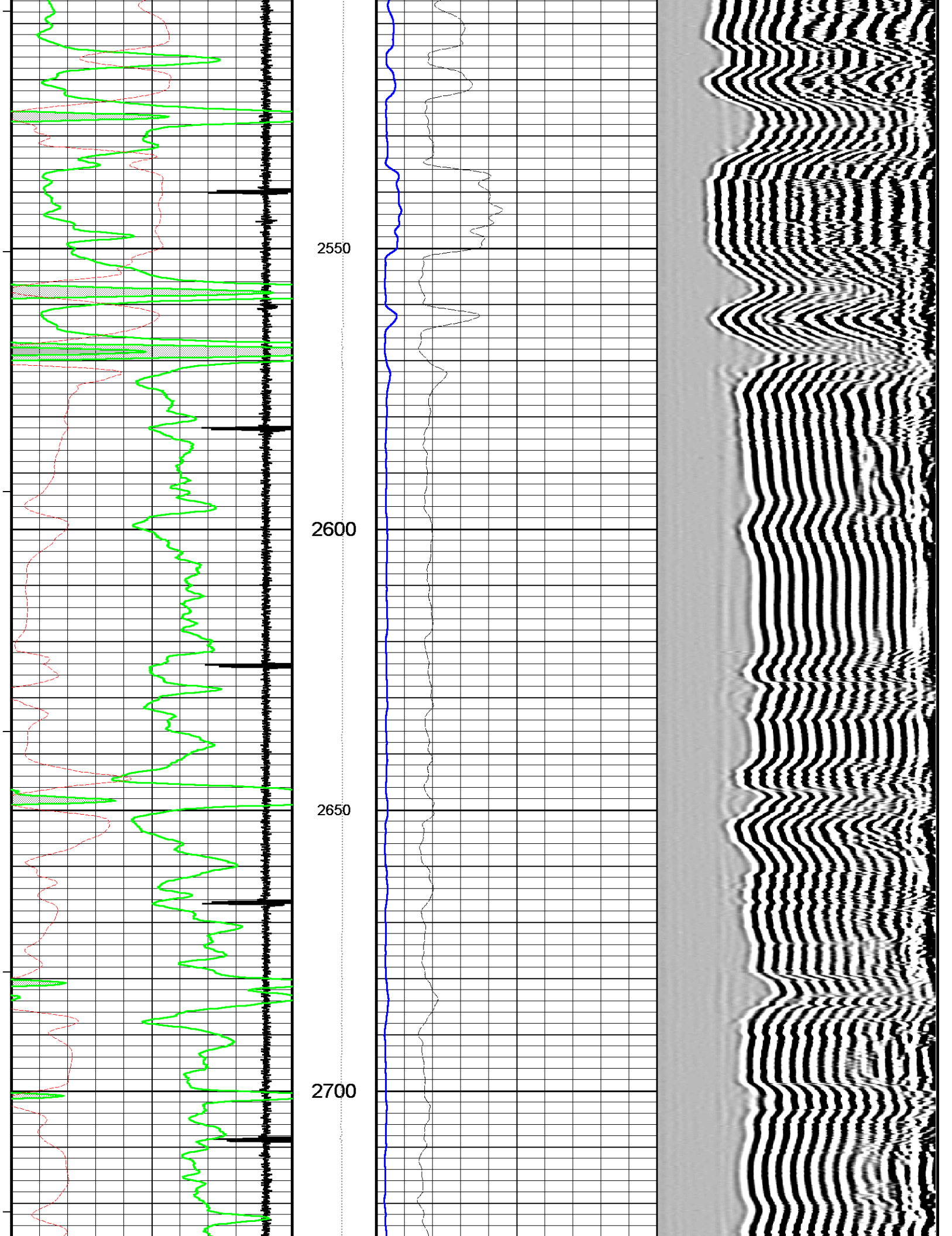


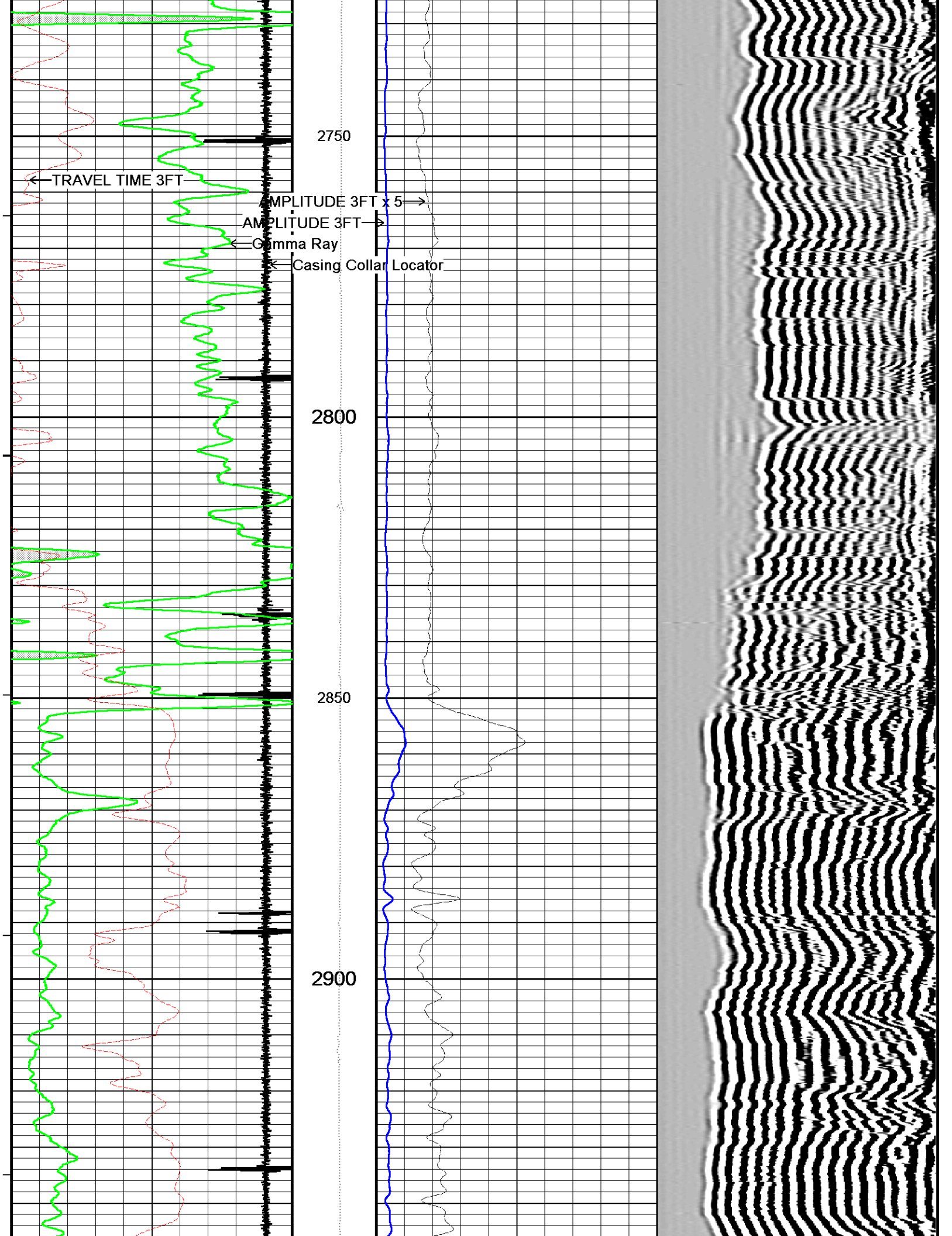


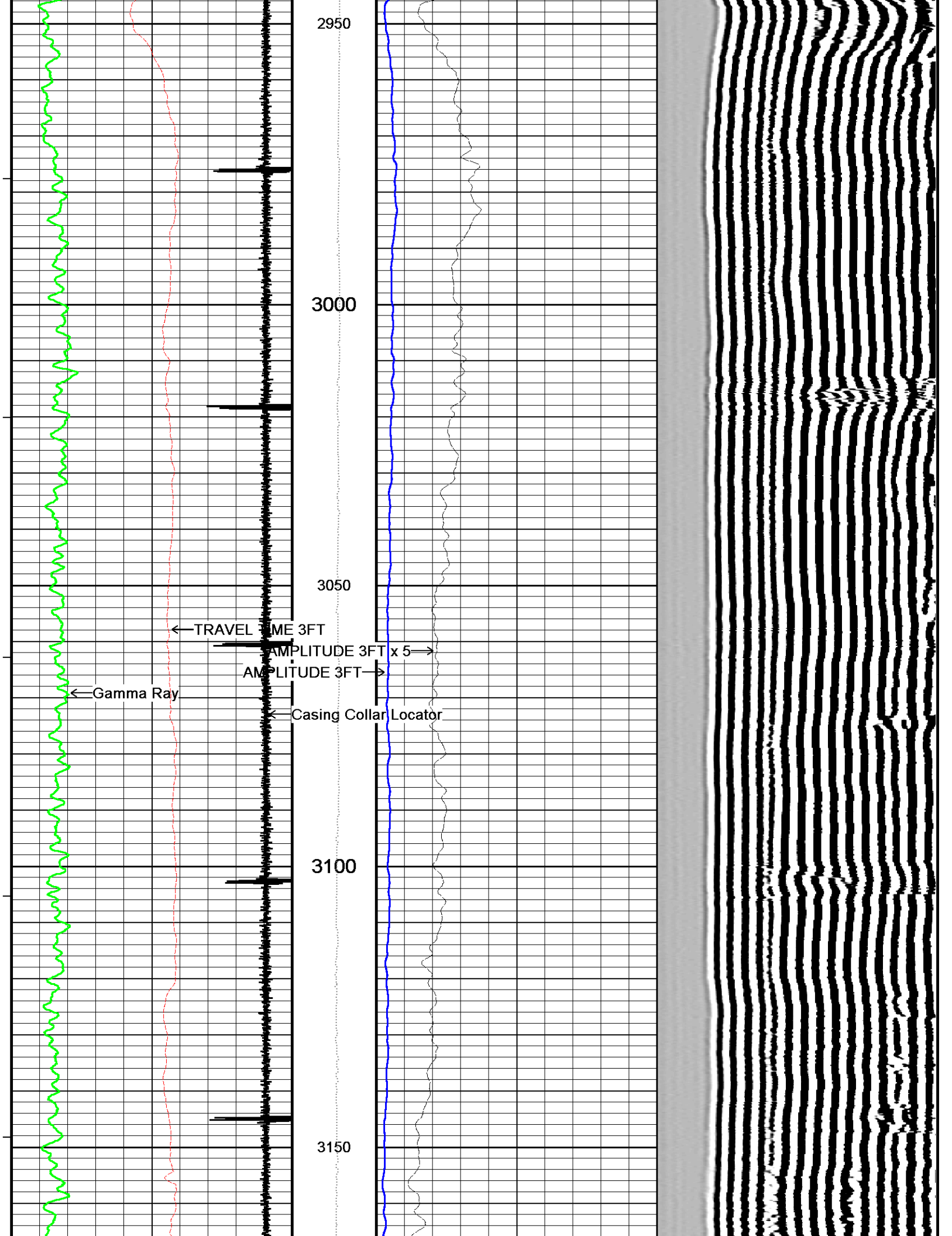


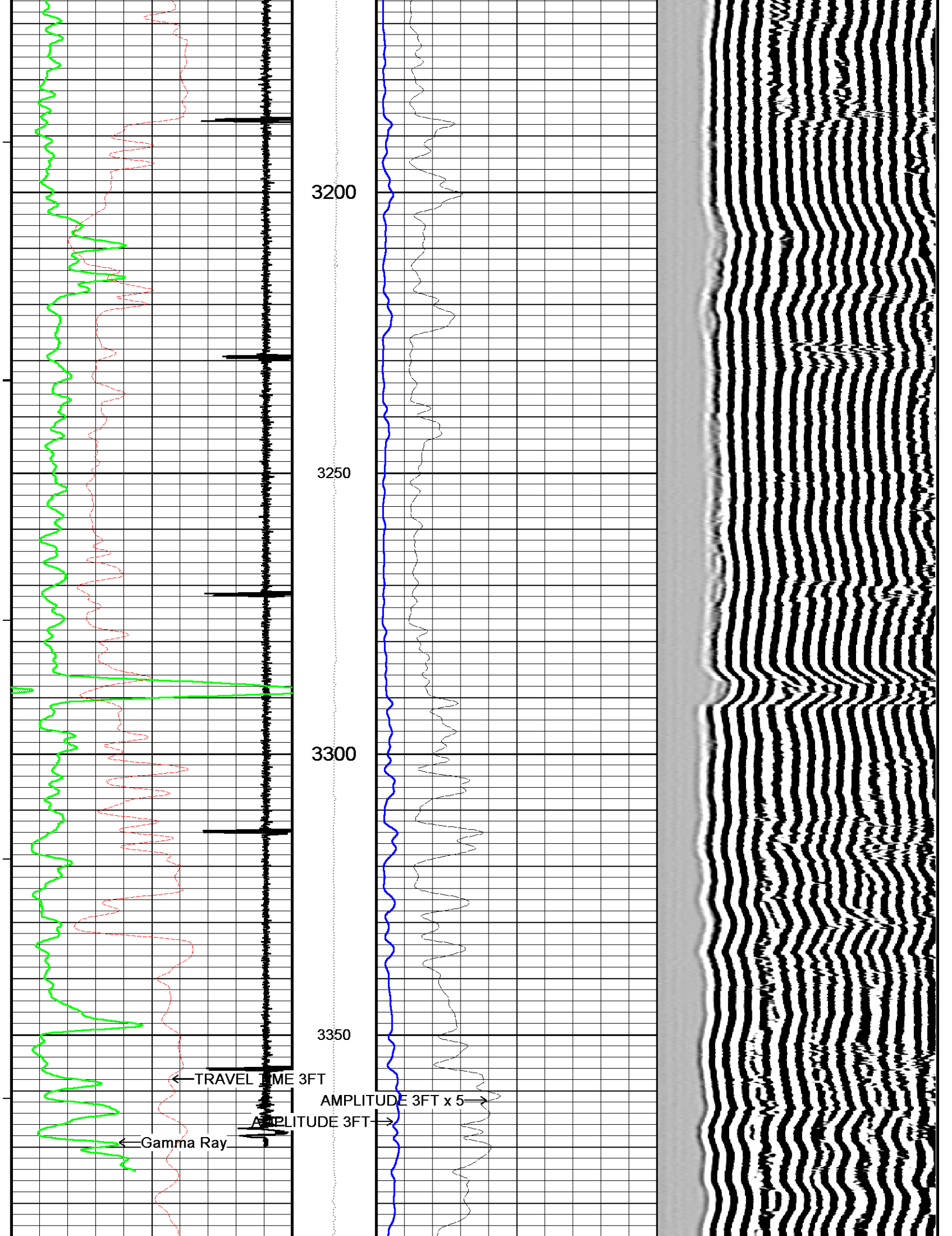


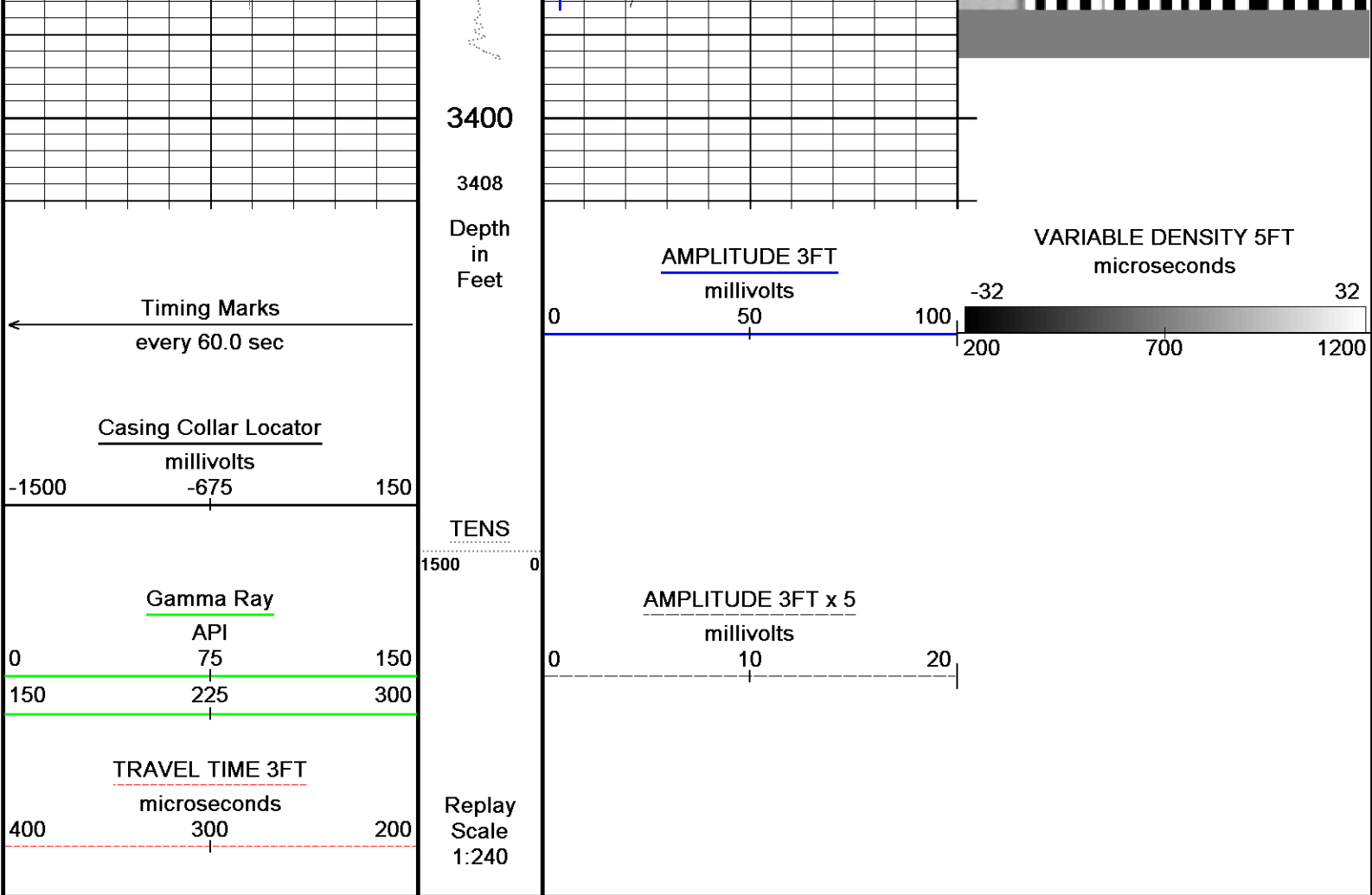










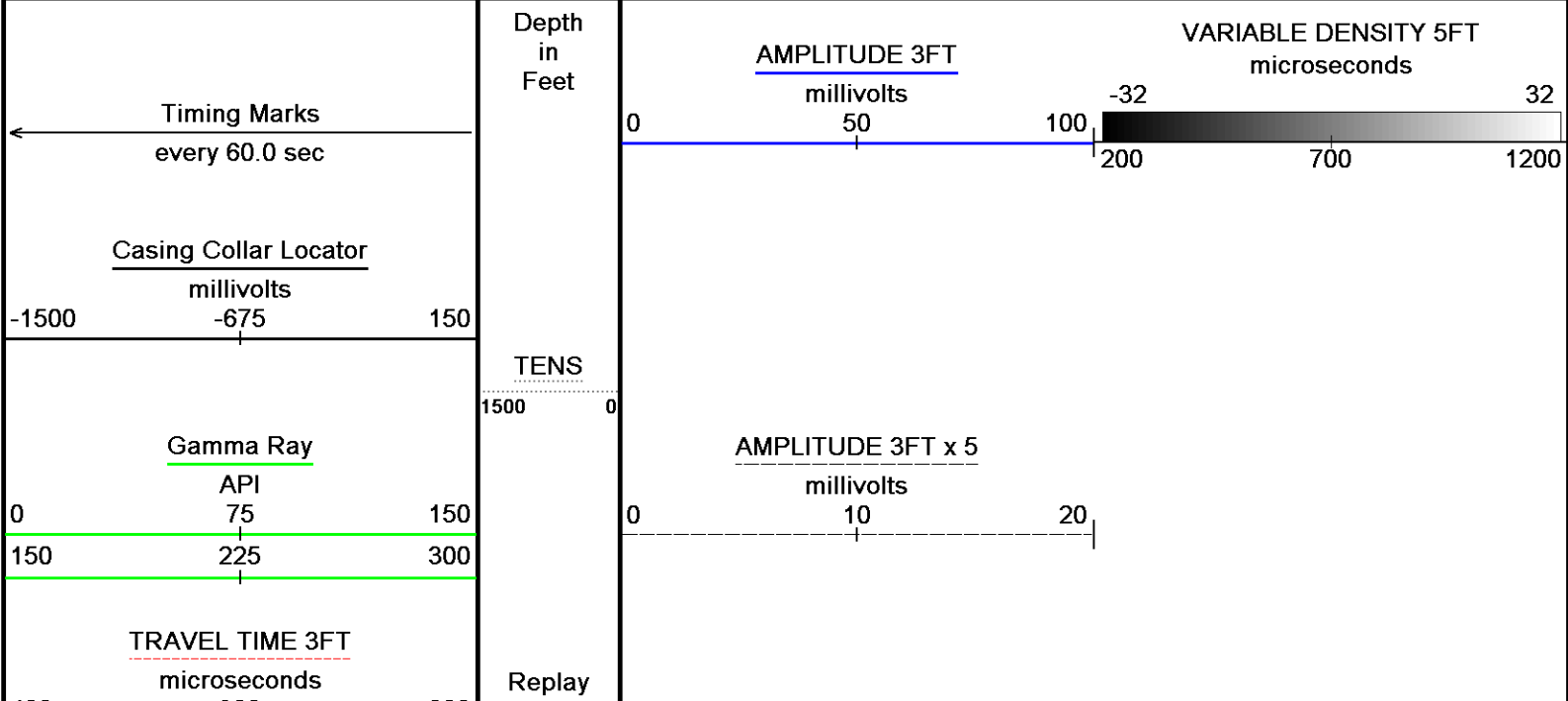


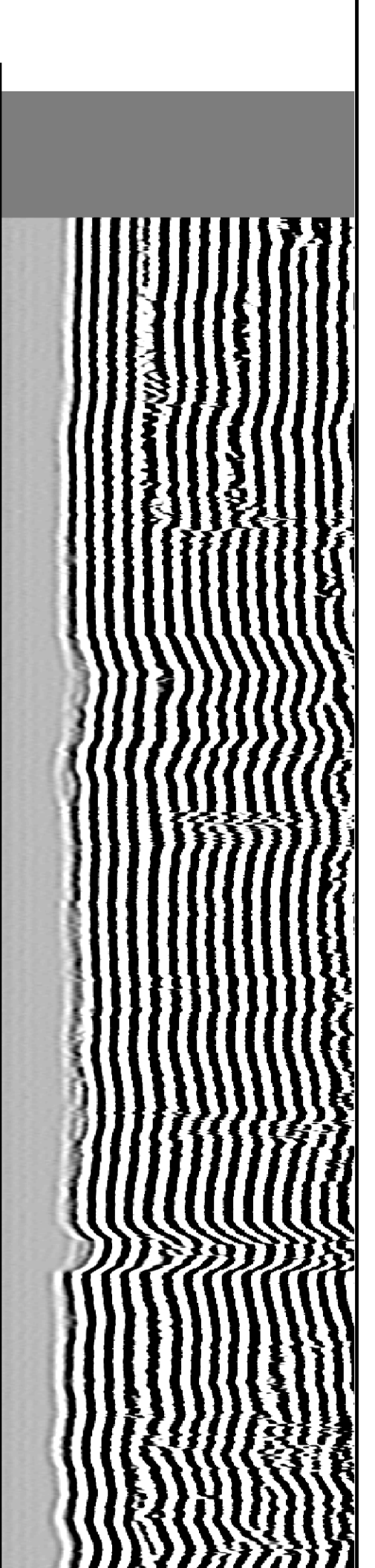
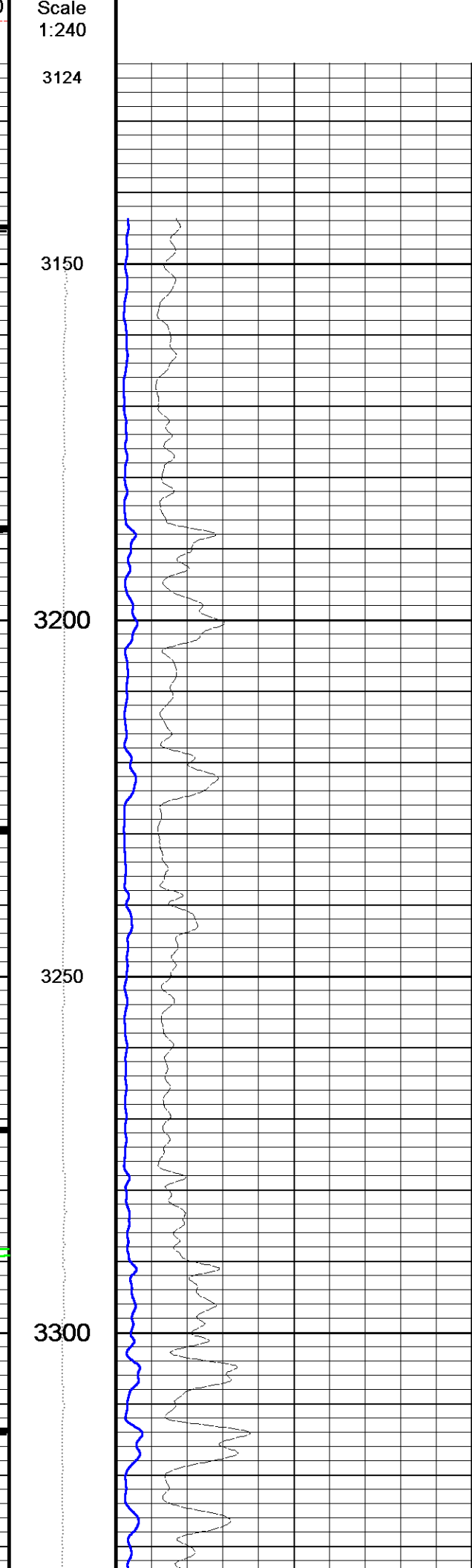
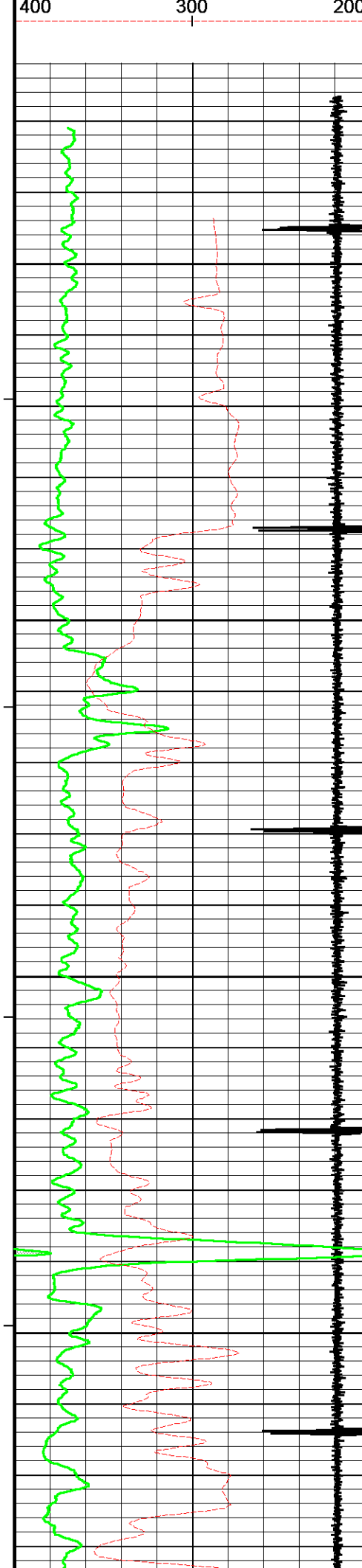
Depth Based Data - Maximum Sampling Increment 2.5cm
 Filename: C:\TAOSFEB14\MP.dta
 System Versions: Logged with 13.08.2005 Plotted with 13.08.2005
 Plotted on 03-FEB-2014 21:48
 Recorded on 03-FEB-2014 14:40

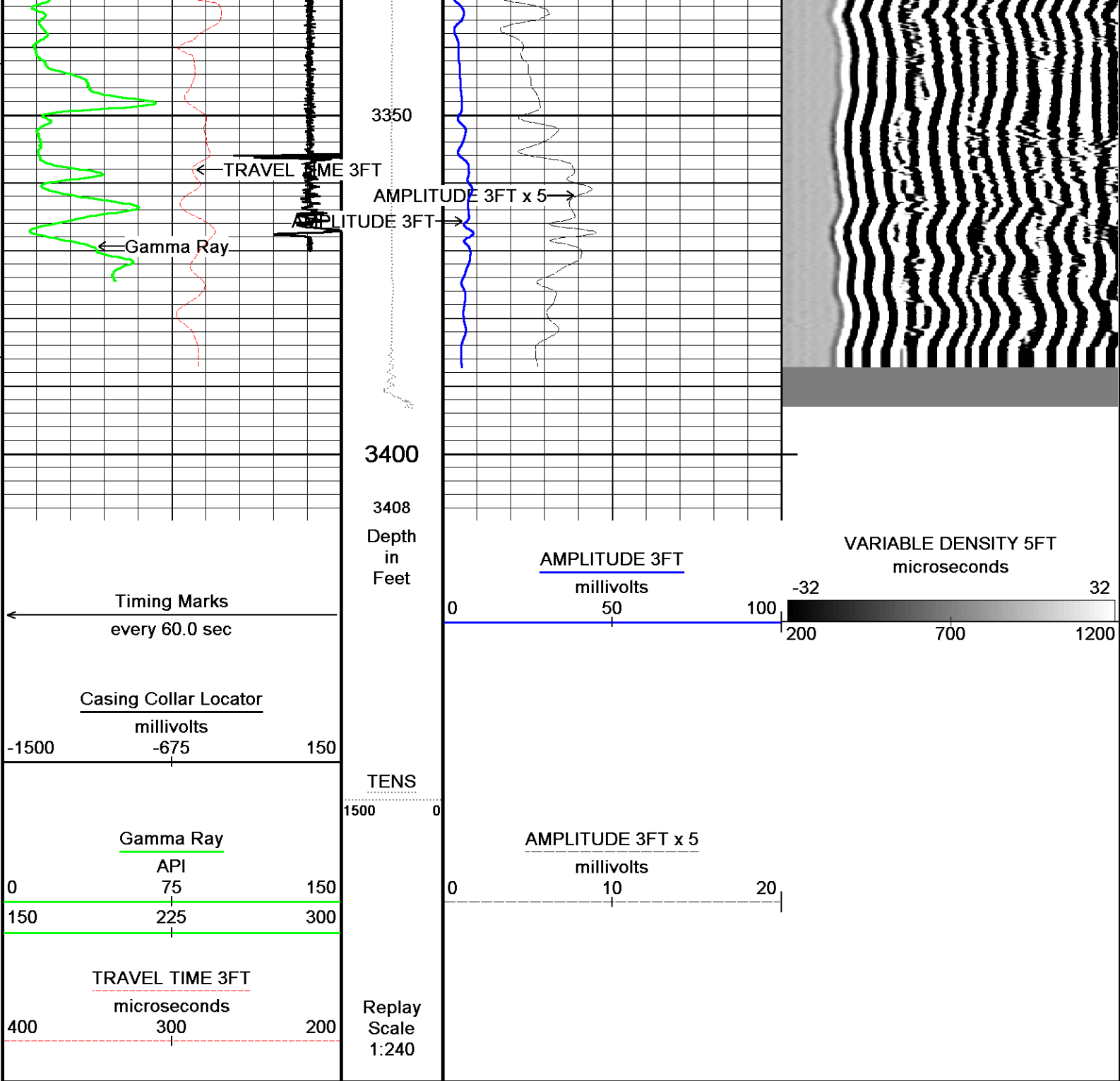
↑ **MAIN PASS WITH 0 PSI AT SURFACE** ↑

↓ **REPEAT PASS WITH 0 PSI AT SURFACE** ↓

Depth Based Data - Maximum Sampling Increment 2.5cm
 Filename: C:\TAOSFEB14\RP.dta
 System Versions: Logged with 13.08.2005 Plotted with 13.08.2005
 Plotted on 03-FEB-2014 21:48
 Recorded on 03-FEB-2014 14:31







Depth Based Data - Maximum Sampling Increment 2.5cm
 Plotted on 03-FEB-2014 21:48
 Filename: C:\TAOSFEB14\RP.dta
 Recorded on 03-FEB-2014 14:31
 System Versions: Logged with 13.08.2005 Plotted with 13.08.2005

↑ REPEAT PASS WITJ 0 PSI AT SURFACE ↑

DOWNHOLE EQUIPMENT C:\TAOSFEB14\CBL360.dta

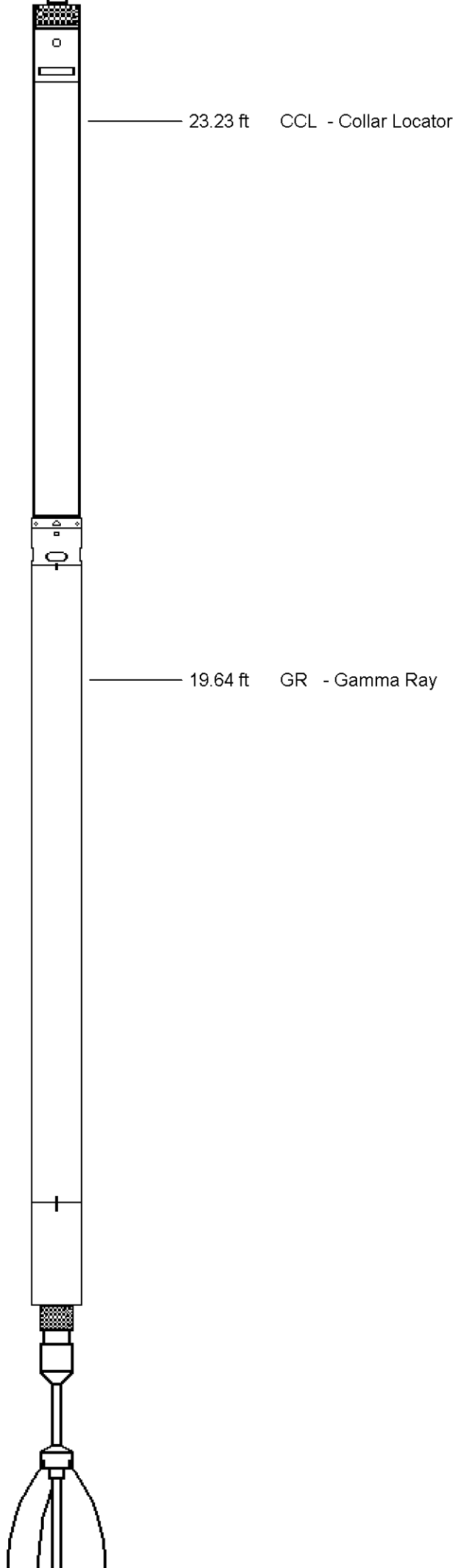
Mono-Cablehead
 MCH-AA 0 LG: 1.02 ft WT: 2.2 lb OD: 1.417 in



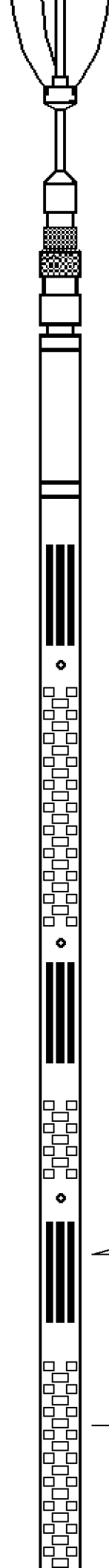
2.75" CCL/Telemetry Sub
CTB-AB 308 LG: 3.40 ft WT: 39.7 lb OD: 2.756 in

2.75" Gamma Ray Tool
GRB-AB 181 LG: 4.71 ft WT: 59.5 lb OD: 2.756 in

2.75in SBT Middle
CEN-BA 141 LG: 3.08 ft WT: 22.0 lb OD: 2.717 in



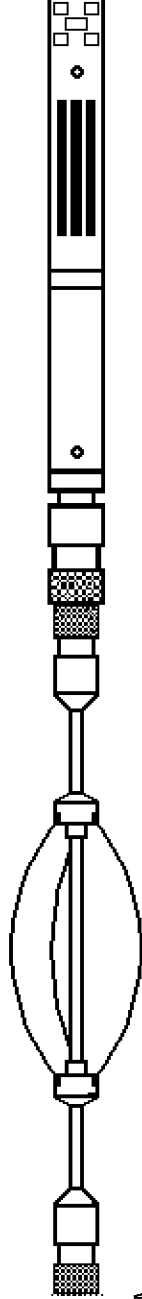
Sector Bond Tool
SBT-AA 328 LG: 10.32 ft WT: 90.4 lb OD: 2.717 in



6.95 ft AM3F - AMPLITUDE 3FT
6.95 ft TT3F - TRAVEL TIME 3FT

5.95 ft VDL2 - VARIABLE DENSITY 5FT

2.75in Bond Cent
 CEN-AA 202 LG: 2.49 ft WT: 11.0 lb OD: 2.717 in



0.00 ft TENS - Tension
 Tool Zero (0.00ft from bottom)

Total Length: 25.02 ft Weight: 224.9 lb

All measurements relative to tool zero.

SHOP AND FIELD CALIBRATIONS

C:\TAOSFEB14\MP.dta

UGR Field Survey Cal GRB-AB 181

Field Calibration on 00-JAN-1988 00:00

Gamma Ray Field Survey Calibration

Tool Type: GRB-AB Serial No: 181
 Calibrator No:

Background	calibrator	standard	Units
0.0	400.0	200.0	CPS

Delta Counts Per Sec: 400.0 CPS/API = 2.000

SBT Field Calibration SBT-AA 328

Sector Bond Field Calibration

Tool Type	SBT-AA	Serial No	328
Sensor	Description	Standard	Measured
AMP 3FT	100% Bond	2.40	1.10
	Free Pipe	72.00	367.20
AMP 5FT	100% Bond	1.60	0.60
	Free Pipe	48.00	914.30
1 SECTOR AMP	100% Bond	5.00	7.90
	Free Pipe	95.00	79.70
2 SECTOR AMP	100% Bond	5.00	6.80
	Free Pipe	95.00	81.70
3 SECTOR AMP	100% Bond	5.00	7.70
	Free Pipe	95.00	65.50
4 SECTOR AMP	100% Bond	5.00	7.80
	Free Pipe	95.00	74.60
5 SECTOR AMP	100% Bond	5.00	8.00
	Free Pipe	95.00	69.00
6 SECTOR AMP	100% Bond	5.00	8.00
	Free Pipe	95.00	85.00
7 SECTOR AMP	100% Bond	5.00	7.90
	Free Pipe	95.00	83.10
8 SECTOR AMP	100% Bond	5.00	6.80
	Free Pipe	95.00	97.80

SBT Constants SBT-AA 328

Last Edited on 00-JAN-1988 00:00

Min Ampl 100% Bond	1.00 mv
Max Ampl 0% Bond	72.00 mv
Casing Size	5.50 IN
Casing Weight	15.5 LB/F
3' TT Correction	-999.3 us
DT Fluid	200.0 US/F
Fast Formation TT	38.5 US/F
Cement Cmpr Strength	580 PSI
Casing Velocity	57.00 US/F
Maximum Attenuation	12.00 DB/F

SMS Constants SMS-A 0

Last Edited on 00-JAN-1988 00:00

Cement Weight	15.50 LB/G
---------------	------------

COMPANY TAGS RESOURCES OPERATING COMPANY, LLC
WELL GIROD NO.1
FIELD WILDCAT
PROVINCE/COUNTY COWLEY
COUNTRY/STATE USA/KANSAS

Elevation Kelly Bushing	1374.00	feet	Bottom Log Interval	3388.00	feet
Elevation Drill Floor	1372.00	feet	Depth Driller	3450.00	feet
Elevation Ground Level	1365.00	feet	Depth Logger	3388.00	feet



Weatherford[®]

CEMENT BOND LOG