



**COMPLETION
& PRODUCTION
SERVICES CO.**

**COMPENSATED
DENSITY / NEUTRON
LOG**

Company TRANS PACIFIC OIL CORP.
Well HAYWORTH TRUST "A" #1-8
Field WILDCAT
County RUSH State KANSAS

Company TRANS PACIFIC OIL CORP.
Well HAYWORTH TRUST "A" #1-8
Field WILDCAT
County RUSH
State KANSAS

Location: API #: 15-165-22056
3100' FSL & 1175' FEL
SEC 8 TWP 18S RGE 18W
Other Services
DIL
SONIC
Elevation
K.B. 2098
D.F.
G.L. 2091

Date	3-4-14		
Run Number	ONE		
Depth Driller	3954		
Depth Logger	3938		
Bottom Logged Interval	3914		
Top Log Interval	3100		
Casing Driller	1292		
Casing Logger	1290		
Bit Size	7.875		
Type Fluid in Hole	CHEMICAL MUD		
Density / Viscosity	9.3 / 49		
pH / Fluid Loss	10.0 / 8.8		
Source of Sample	FLOWLINE		
Rm @ Meas. Temp	0.52 @ 78F		
Rmf @ Meas. Temp	0.39 @ 78F		
Rmc @ Meas. Temp	0.62 @ 78F		
Source of Rmf / Rmc	MEASURED		
Rm @ BHT	.360 @ 114F		
Time Circulation Stopped	2 HOURS		
Time Logger on Bottom	1:50 P.M.		
Maximum Recorded Temperature	114F		
Equipment Number	860		
Location	HAYS, KS.		
Recorded By	RUPP		
Witnessed By	ALEX CHAPIN		

<<< Fold Here >>>

All interpretations are opinions based on inferences from electrical or other measurements and we cannot and do not guarantee the accuracy or correctness of any interpretation, and we shall not, except in the case of gross or willful negligence on our part, be liable or responsible for any loss, costs, damages, or expenses incurred or sustained by anyone resulting from any interpretation made by any of our officers, agents or employees. These interpretations are also subject to our general terms and conditions set out in our current Price Schedule.

Comments

NABORS COMPLETION & PRODUCTION SERVICES
785-628-6395
THANK YOU FOR YOUR BUSINESS
DIRECTIONS: LACROSSE, 1S, 1W, 1/4S, W INTO.
COMMENT: PIPE STRAP SHOWED THE RIG 16' SHORT OF TD.

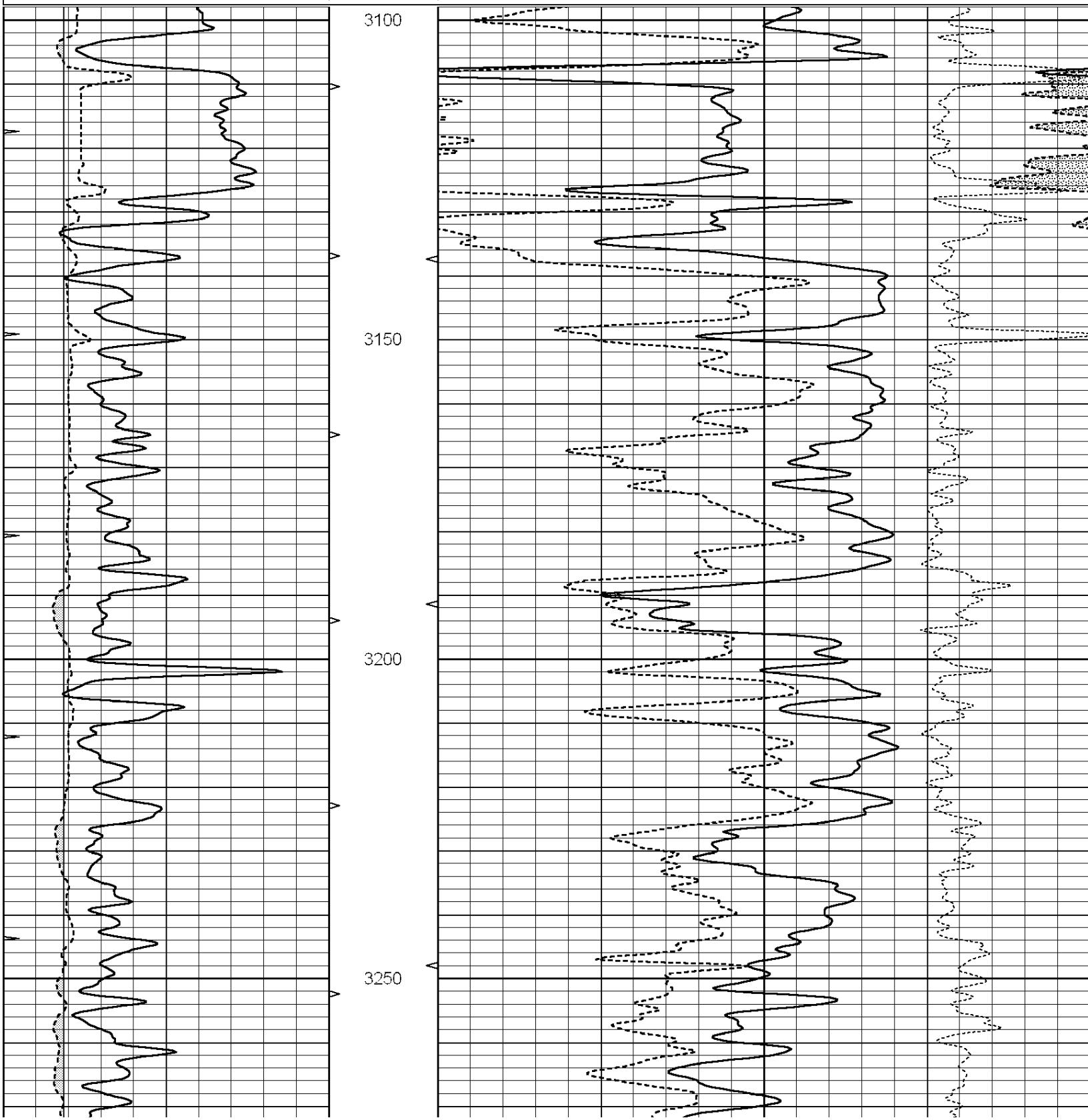


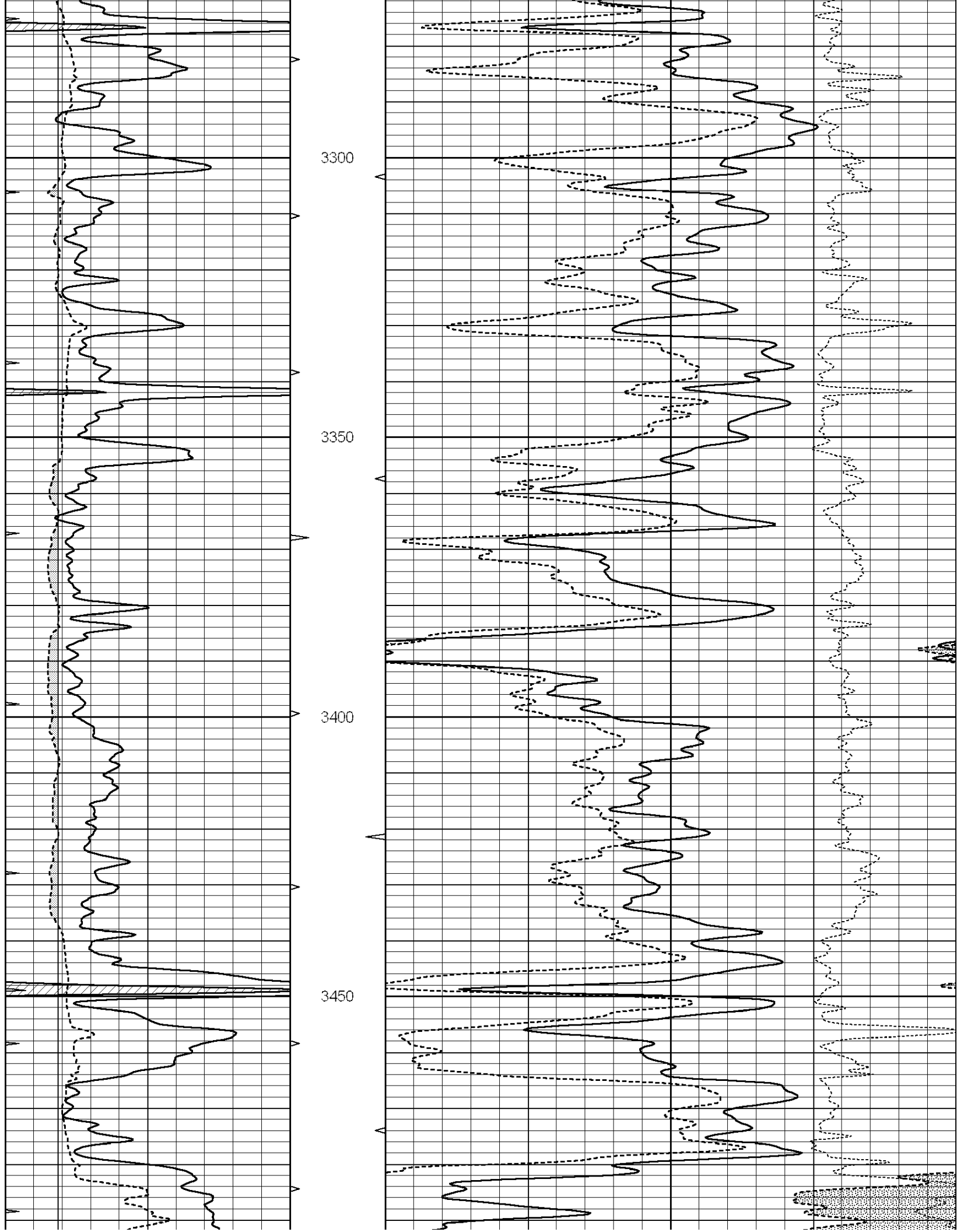
**COMPLETION
& PRODUCTION**

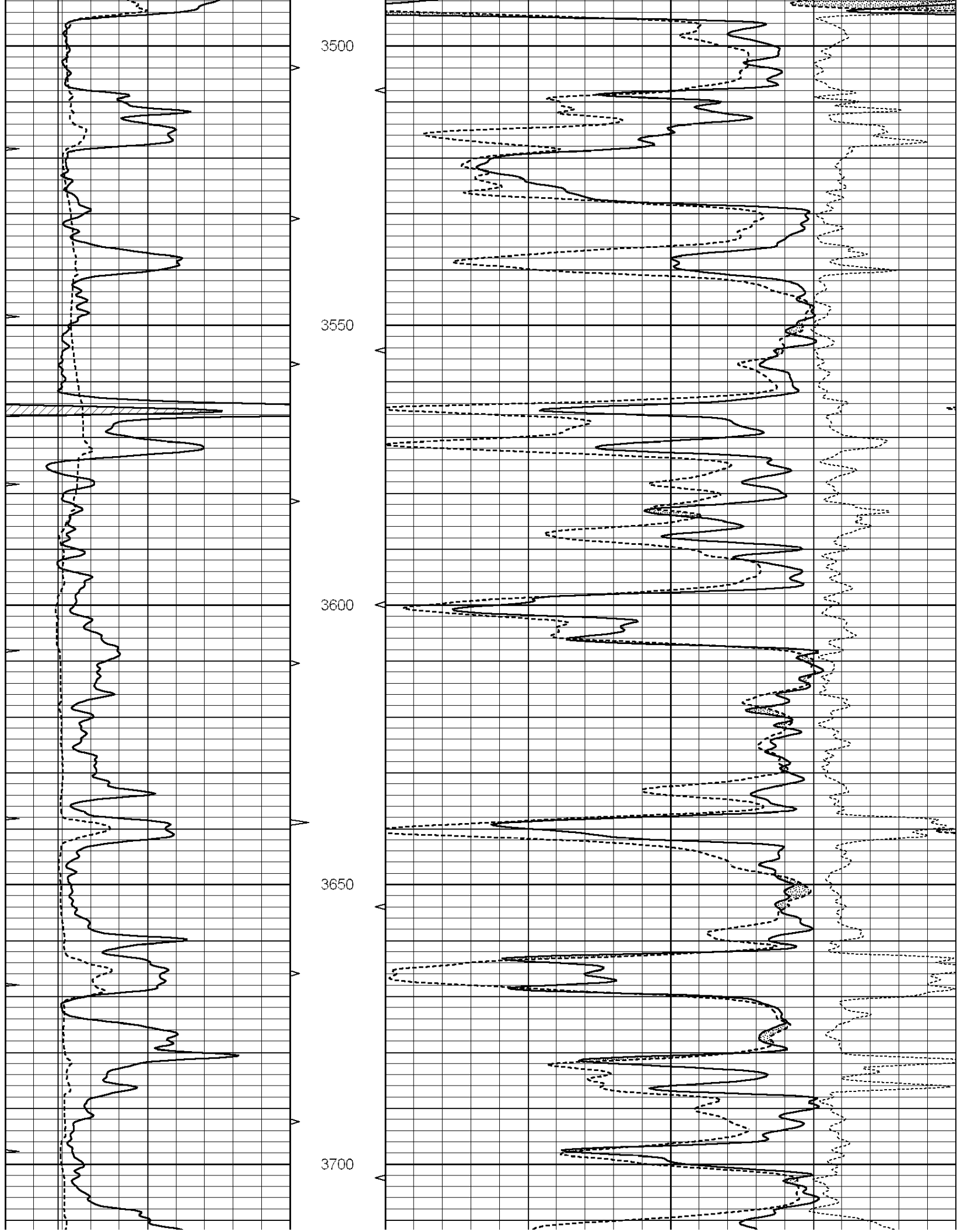
MAIN SECTION

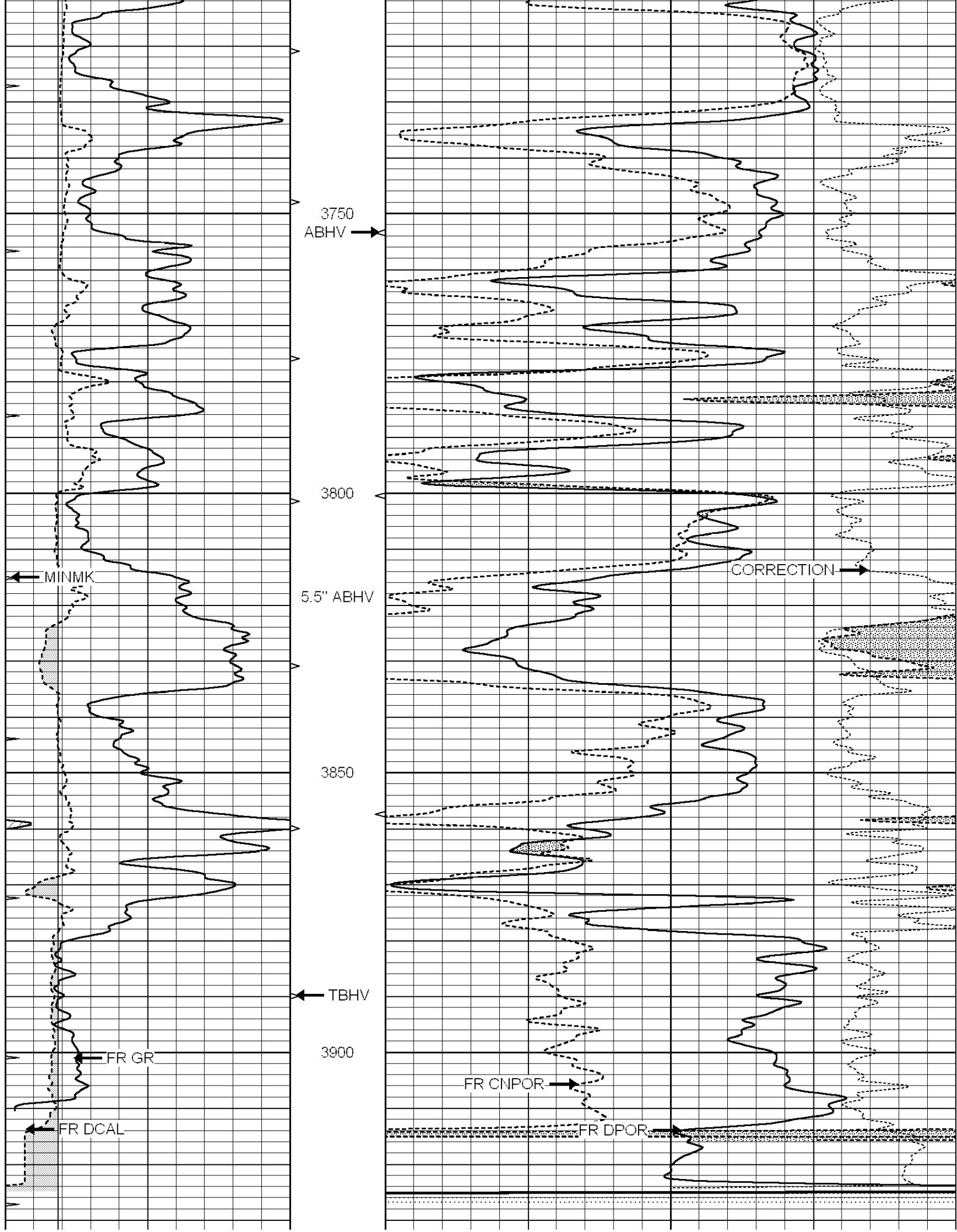
Database File: 23916ddn.db
 Dataset Pathname: pass3.1
 Presentation Format: _den_neu
 Dataset Creation: Tue Mar 04 15:11:44 2014 by Calc Open-Cased 090629
 Charted by: Depth in Feet scaled 1:240

0	GAMMA RAY (GAPI)	150	ABHV	30	COMPENSATED DENSITY (pu)	-10
6	CALIPER (in)	16	10 (ft3)	0 30	COMPENSATED NEUTRON (pu)	-10
0	MINMK	20	TBHV		-0.25 CORRECTION (g/cc)	0.25
			0 (ft3)	10		









3750
ABHV

3800

5.5" ABHV

3850

TBHV

3900

MINMK

CORRECTION

FR GR

FR CNPOR

FR DPOR

FR DCAL

MATRIX 2.71 LIMESTONE

--- TD ---

0	GAMMA RAY (GAPI)	150	ABHV	30	COMPENSATED DENSITY (pu)	-10
6	CALIPER (in)	16	10 (ft3)	0 30	COMPENSATED NEUTRON (pu)	-10
0	MINMK	20	TBHV		-0.25 CORRECTION (g/cc)	0.25
			0 (ft3)	10		

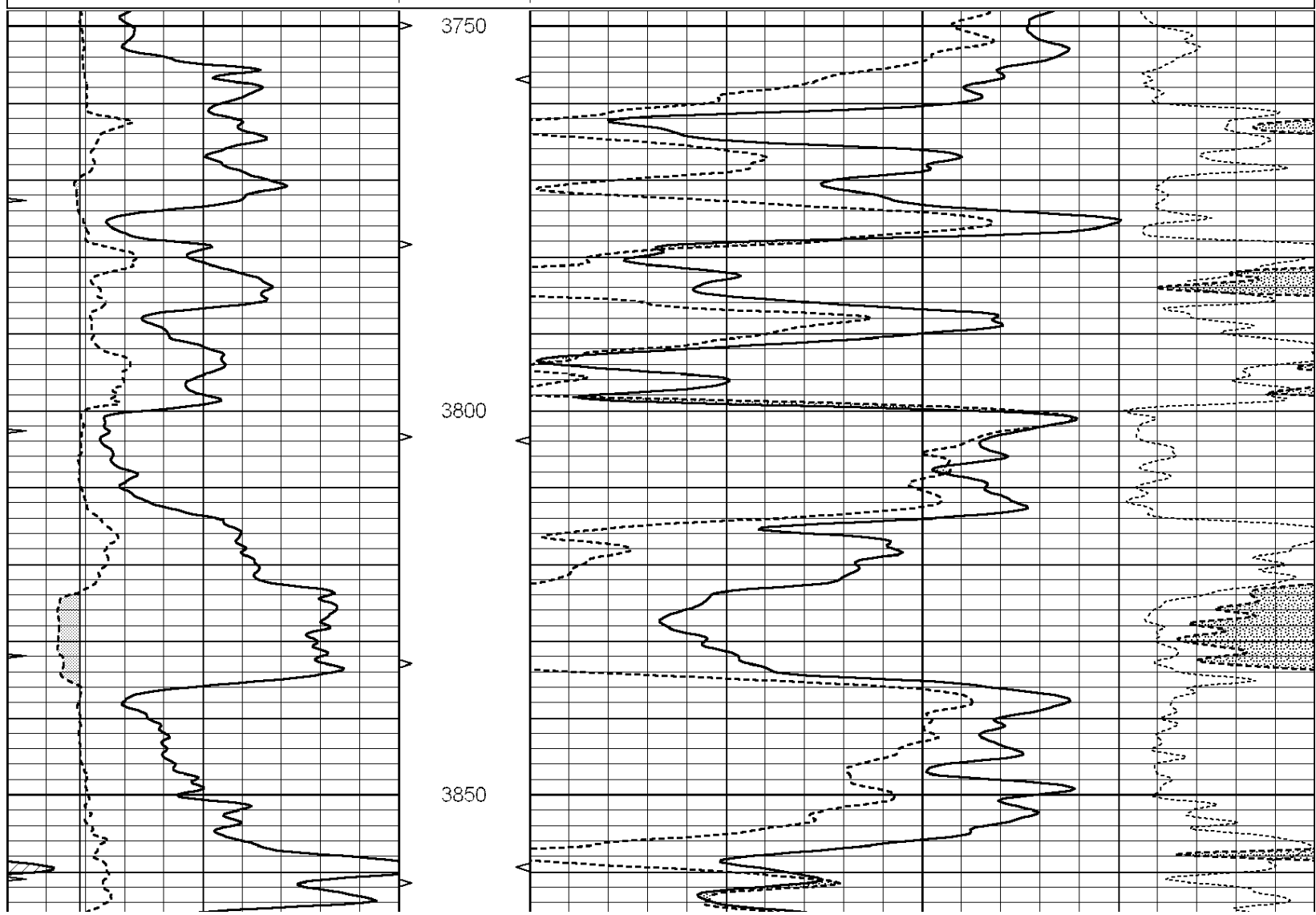


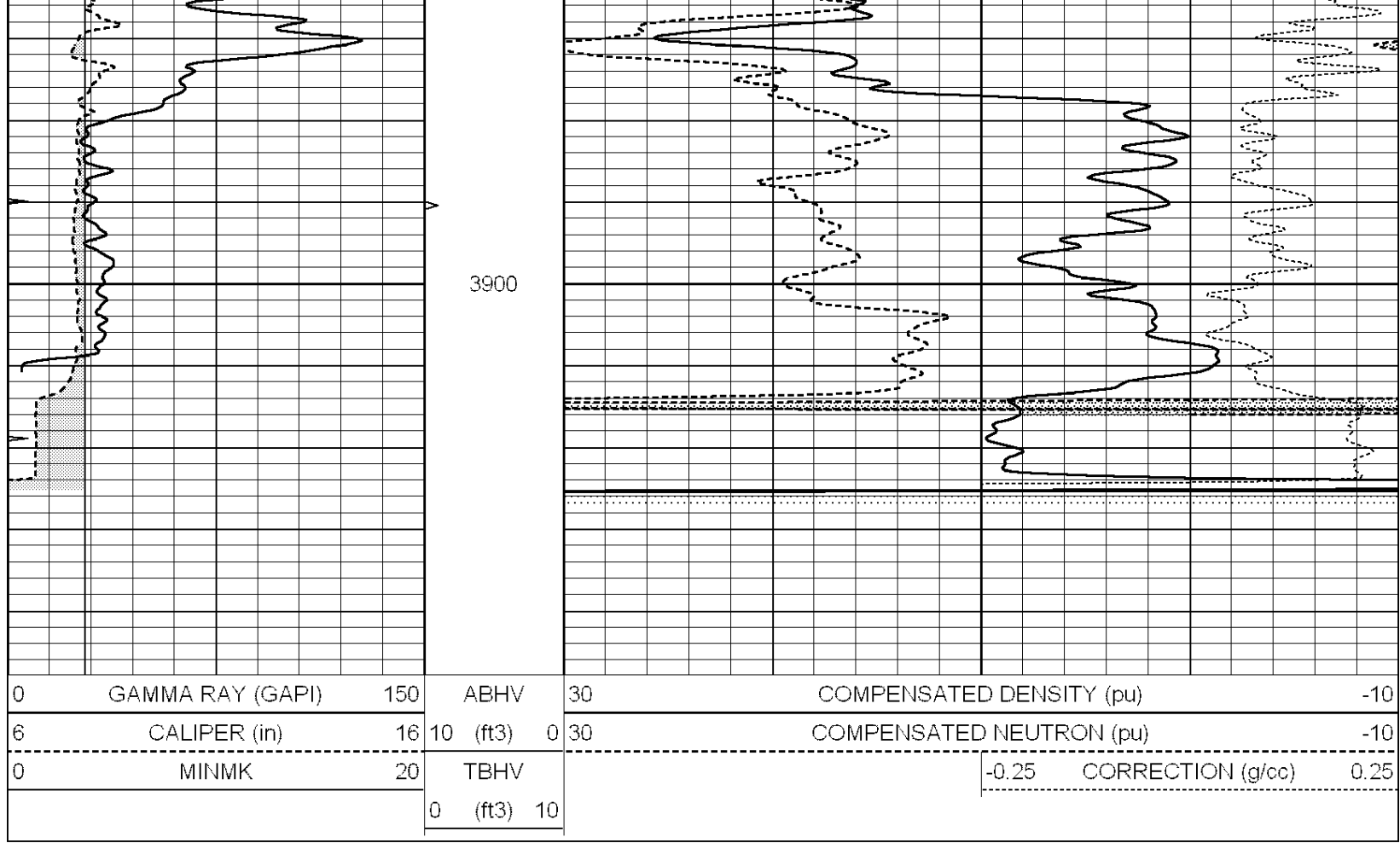
COMPLETION & PRODUCTION SERVICES CO.

REPEAT SECTION

Database File: 23916ddn.db
 Dataset Pathname: pass2.1
 Presentation Format: _den_neu
 Dataset Creation: Tue Mar 04 14:02:25 2014 by Calc Open-Cased 090629
 Charted by: Depth in Feet scaled 1:240

0	GAMMA RAY (GAPI)	150	ABHV	30	COMPENSATED DENSITY (pu)	-10
6	CALIPER (in)	16	10 (ft3)	0 30	COMPENSATED NEUTRON (pu)	-10
0	MINMK	20	TBHV		-0.25 CORRECTION (g/cc)	0.25
			0 (ft3)	10		





Calibration Report

Database File: 23916ddn.db
 Dataset Pathname: pass3.1
 Dataset Creation: Tue Mar 04 15:11:44 2014 by Calc Open-Cased 090629

Dual Induction Calibration Report

Serial-Model: DIL3-GEAR
 Performed: Tue Mar 04 14:18:38 2014

Loop:	Readings			References			Results	
	Air	Loop		Air	Loop		m	b
Deep	0.011	0.656	V	0.000	400.000	mmho/m	500.000	7.000
Medium	0.013	0.740	V	0.000	462.500	mmho/m	600.000	7.000
Internal:	Zero	Cal		Zero	Cal		m	b
Deep	0.002	0.645	V	0.000	400.000	mmho/m	560.000	-1.071
Medium	0.007	0.740	V	0.000	462.500	mmho/m	540.000	-4.000

Compensated Density Calibration Report

Serial-Model: GEAR1-GEARHART
 Source / Verifier: 147 / 147
 Master Calibration Performed: Tue Mar 04 14:12:48 2014

Master Calibration

	Density		Far Detector	Near Detector
Magnesium	1.710	g/cc	1211.27	625.92 cps
Aluminum	2.600	g/cc	267.11	413.26 cps

Spine Angle = 74.64

Density/Spine Ratio = 0.568

	Size		Reading	
Small Ring	8.20	in	5.18	V
Large Ring	14.00	in	8.18	V

Compensated Neutron Calibration Report

Serial Number: 080620
 Tool Model: Probe

PRE-SURVEY VERIFICATION

Detector	Readings	Measured	Target
Short Space	cps		
Long Space	cps	pu	pu

POST-SURVEY VERIFICATION

Detector	Readings	Measured	Target
Short Space	cps		
Long Space	cps	pu	pu

Gamma Ray Calibration Report

Serial Number: 7
 Tool Model: Probe1
 Performed: Tue Mar 04 10:47:15 2014

Calibrator Value: 1.0 GAPI

Background Reading: 0.0 cps
 Calibrator Reading: 1.0 cps

Sensitivity: 0.4500 GAPI/cps