



**COMPLETION
& PRODUCTION
SERVICES CO.**

**SONIC
LOG**

Company TRANS PACIFIC OIL CORP.
Well HAYWORTH TRUST "A" #1-8
Field WILDCAT
County RUSH State KANSAS

Company TRANS PACIFIC OIL CORP.
Well HAYWORTH TRUST "A" #1-8
Field WILDCAT
County RUSH
State KANSAS

Location: API #: 15-165-22056
3100' FSL & 1175' FEL
SEC 8 TWP 18S RGE 18W
Permanent Datum GROUND LEVEL Elevation 2091
Log Measured From KELLY BUSHING 7' A.G.L.
Drilling Measured From KELLY BUSHING
Other Services
CDL/CNL
DIL
Elevation
K.B. 2098
D.F.
G.L. 2091

Date	3-4-14
Run Number	TW0
Depth Driller	3954
Depth Logger	3938
Bottom Logged Interval	3930
Top Log Interval	1280
Casing Driller	1292
Casing Logger	1290
Bit Size	7.875
Type Fluid in Hole	CHEMICAL MUD
Density / Viscosity	9.3 / 49
pH / Fluid Loss	10.0 / 8.8
Source of Sample	FLOWLINE
Rm @ Meas. Temp	0.52 @ 78F
Rmf @ Meas. Temp	0.39 @ 78F
Rmc @ Meas. Temp	0.62 @ 78F
Source of Rmf / Rmc	MEASURED
Rm @ BHT	.360 @ 114F
Time Circulation Stopped	2 HOURS
Time Logger on Bottom	1:50 P.M.
Maximum Recorded Temperature	114F
Equipment Number	860
Location	HAYS, KS.
Recorded By	RUPP
Witnessed By	ALEX CHAPIN

<<< Fold Here >>>

All interpretations are opinions based on inferences from electrical or other measurements and we cannot and do not guarantee the accuracy or correctness of any interpretation, and we shall not, except in the case of gross or willful negligence on our part, be liable or responsible for any loss, costs, damages, or expenses incurred or sustained by anyone resulting from any interpretation made by any of our officers, agents or employees. These interpretations are also subject to our general terms and conditions set out in our current Price Schedule.

Comments

NABORS COMPLETION & PRODUCTION SERVICES
785-628-6395
THANK YOU FOR YOUR BUSINESS
DIRECTIONS: LACROSSE, 1S, 1W, 1/4S, W INTO.
COMMENT: PIPE STRAP SHOWED THE RIG 16' SHORT OF TD.

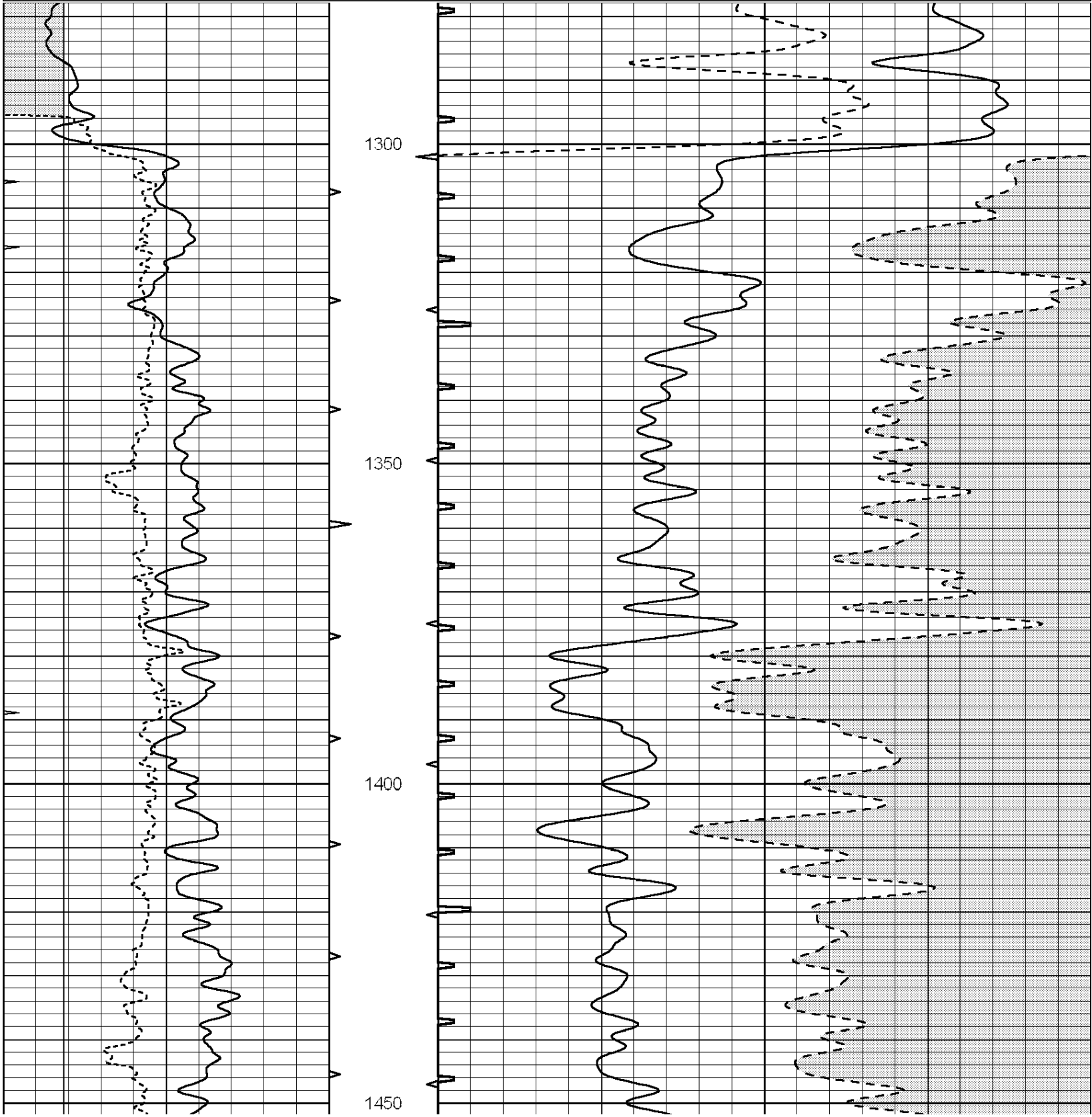


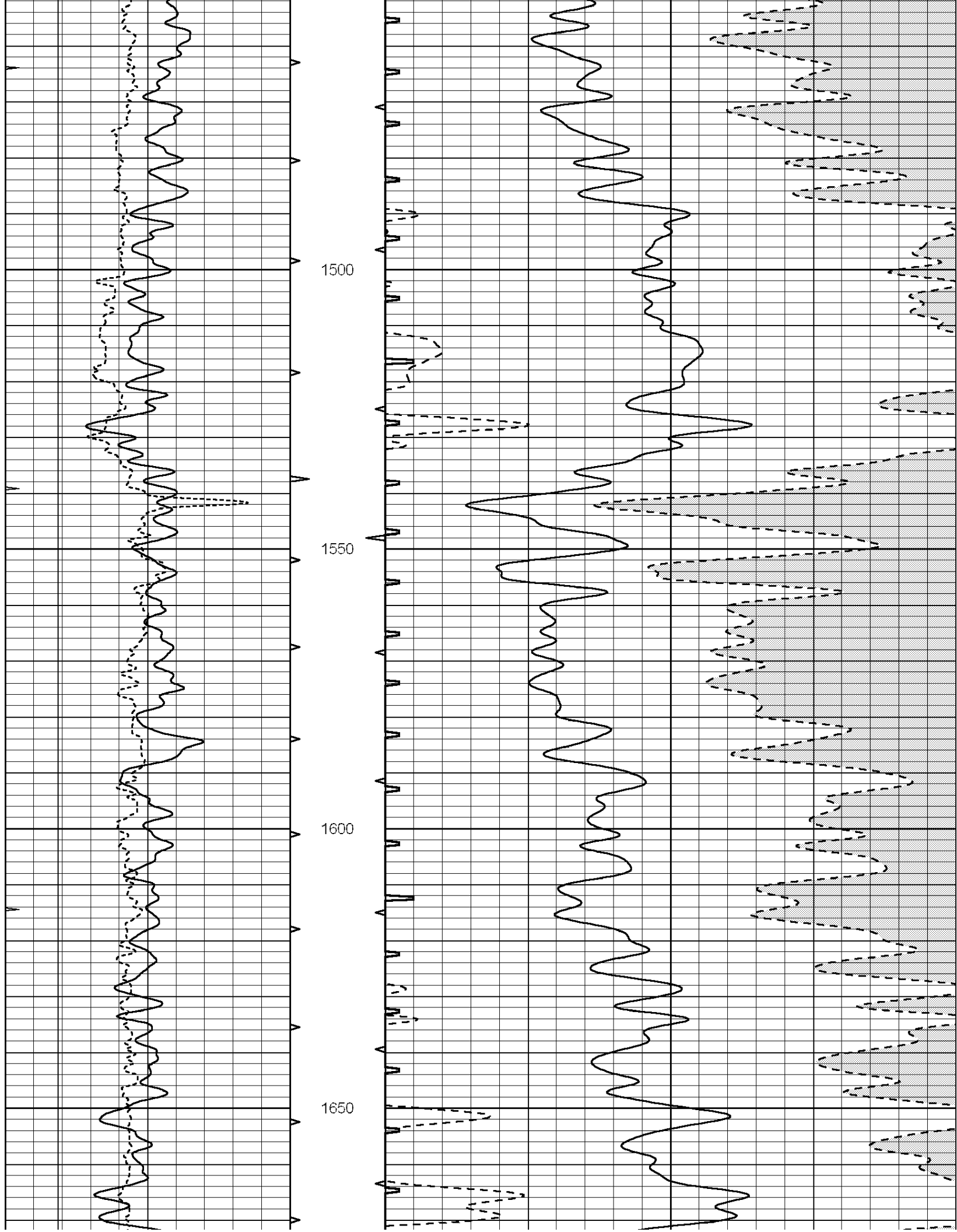
**COMPLETION
& PRODUCTION**

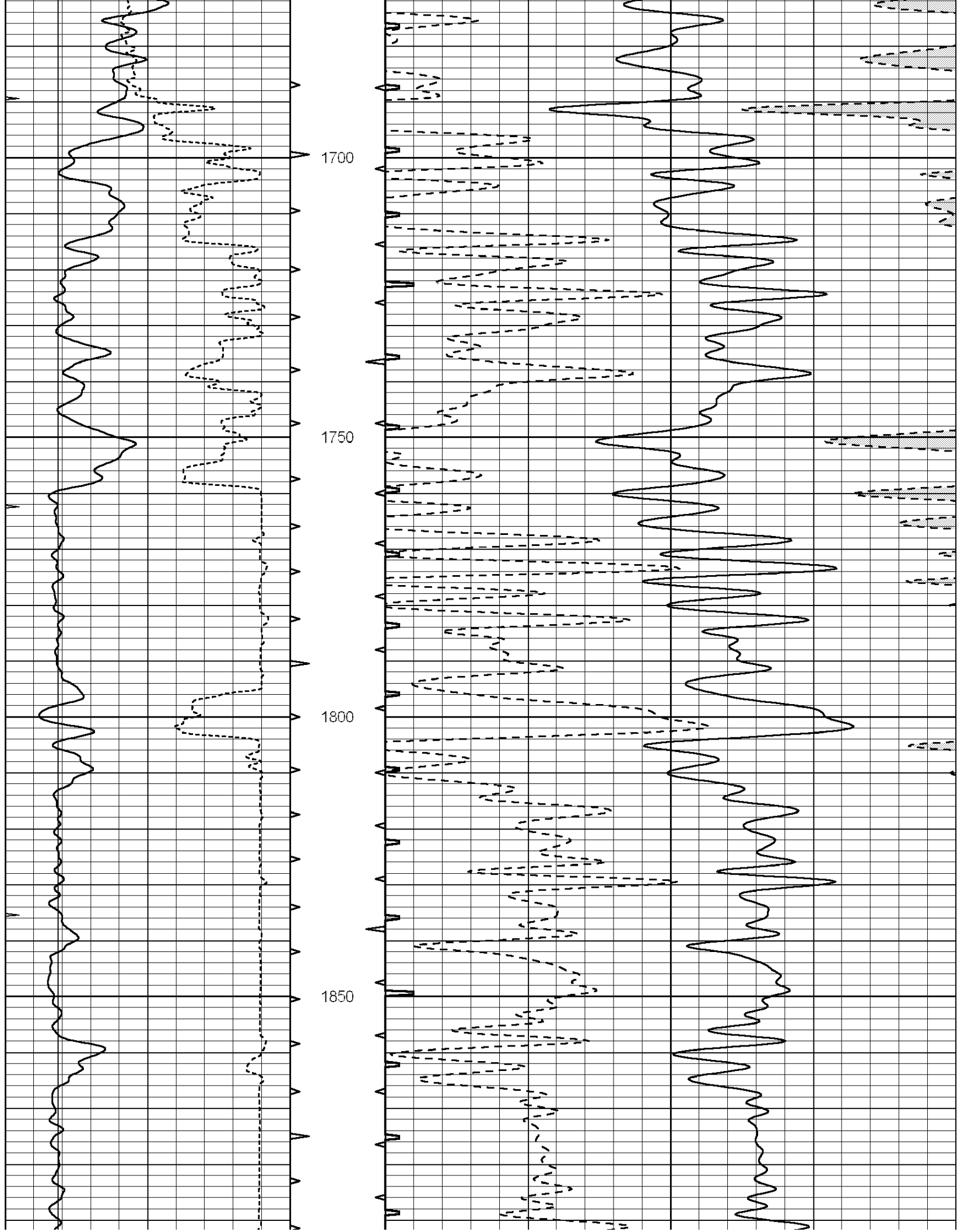
MAIN SECTION

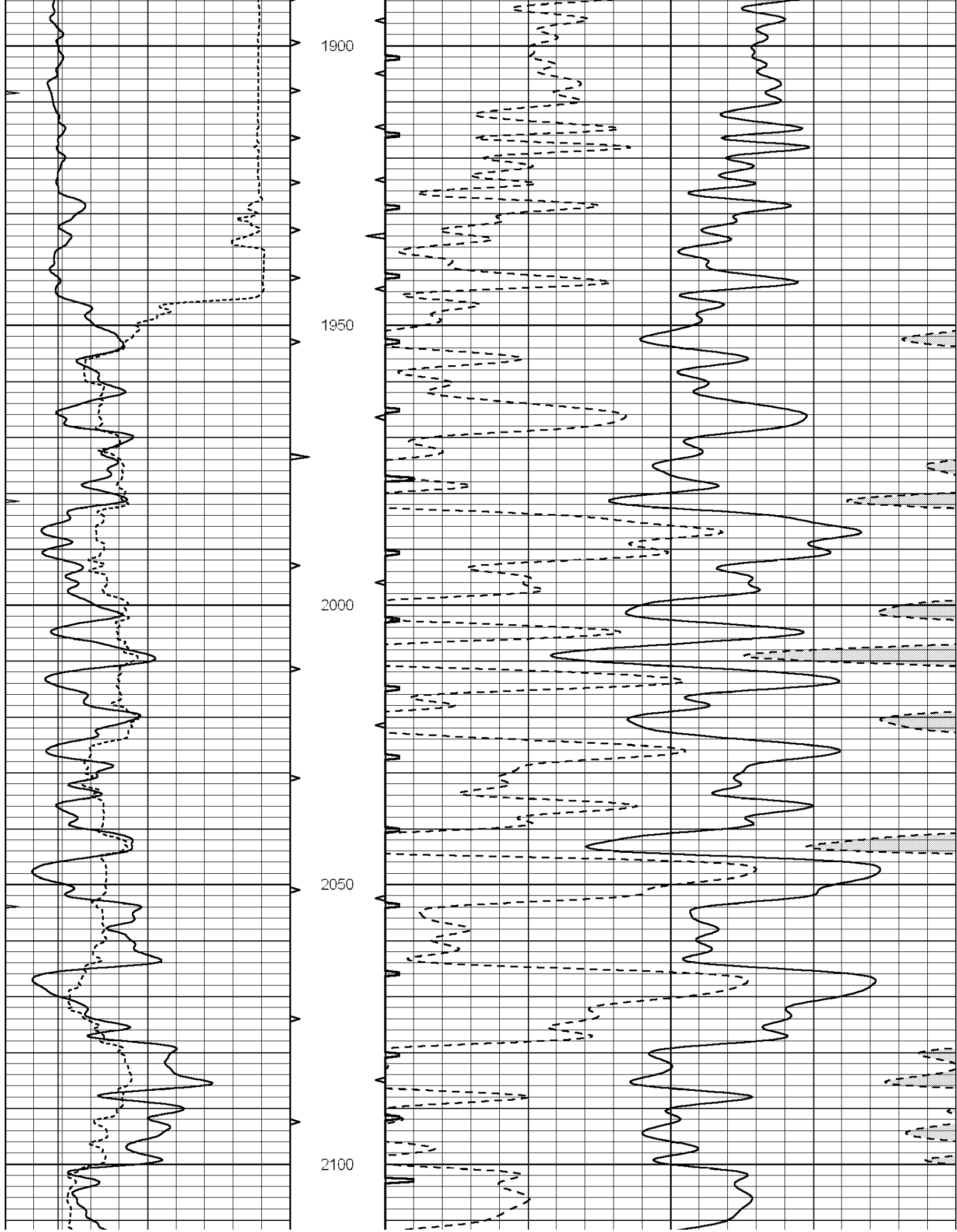
Database File: 23916ddn.db
 Dataset Pathname: pass6.2A
 Presentation Format: _slt
 Dataset Creation: Tue Mar 04 17:00:12 2014
 Charted by: Depth in Feet scaled 1:240

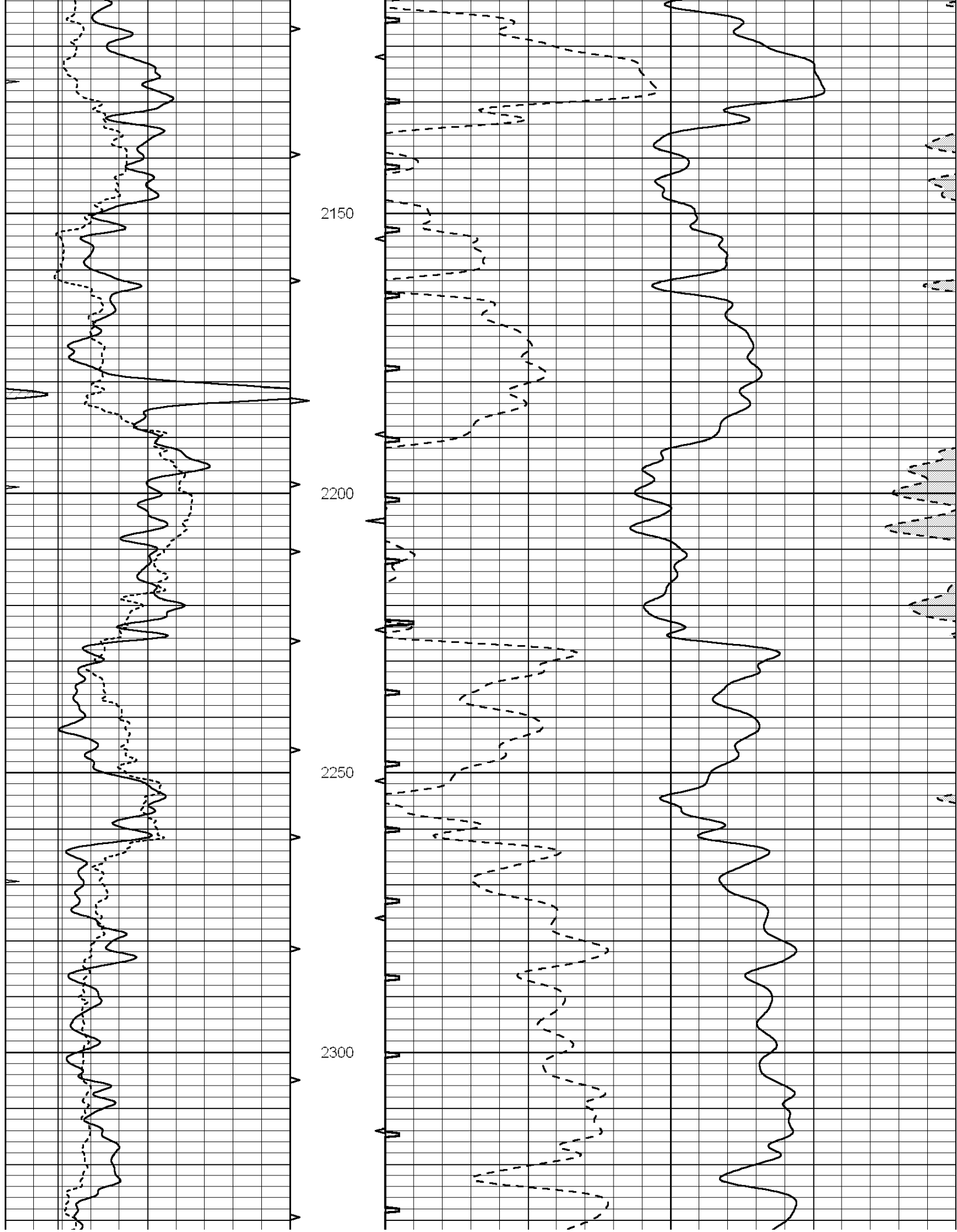
0	GAMMA RAY (GAPI)	150	ABHV	140	DELTA TIME (usec/ft)	40
6	MELCAL (in)	16	10 (ft3)	0 30	SONIC POROSITY (pu)	-10
0	MINMK	20	TBHV	0	ITT (msec)	20
			0 (ft3)	10		

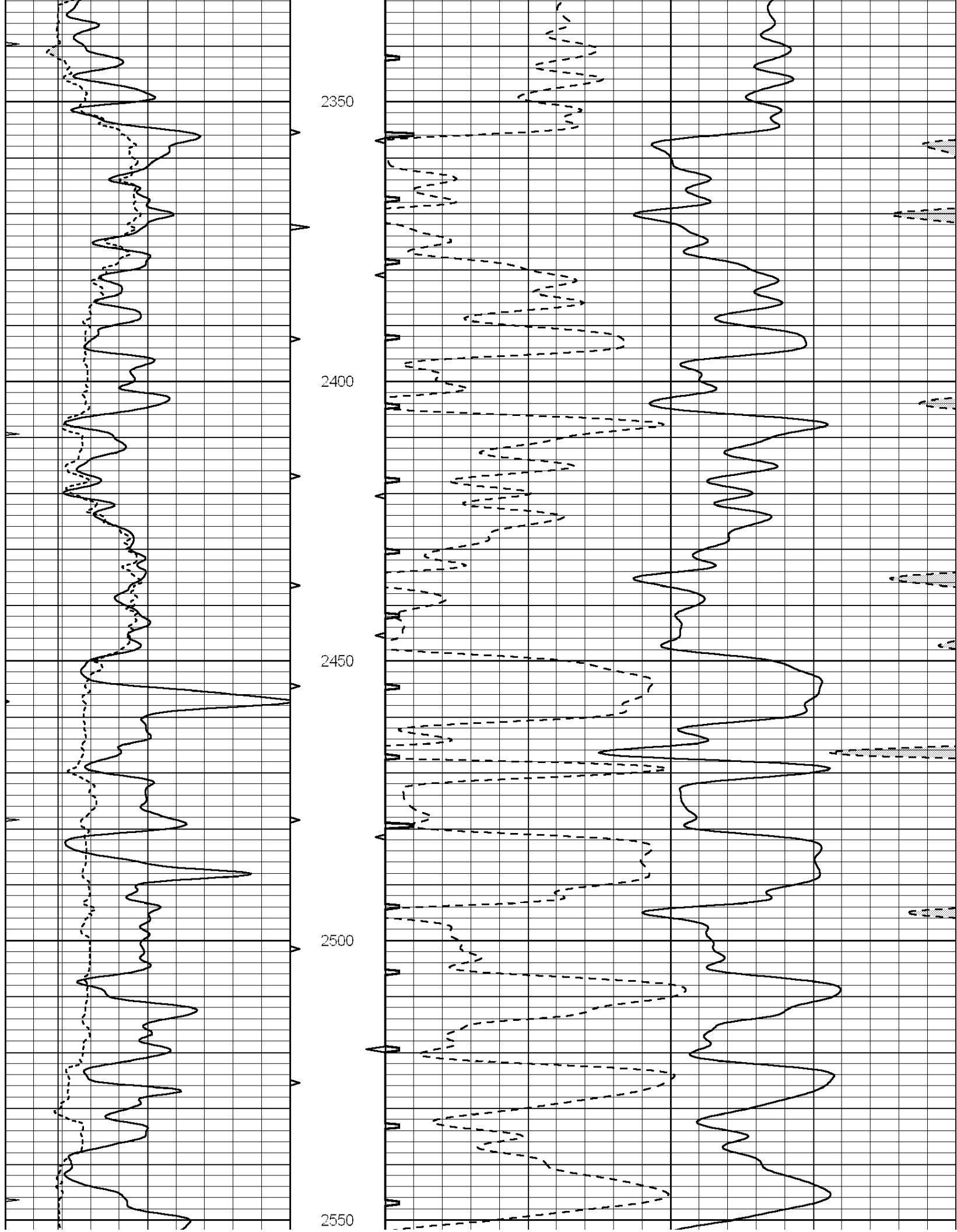


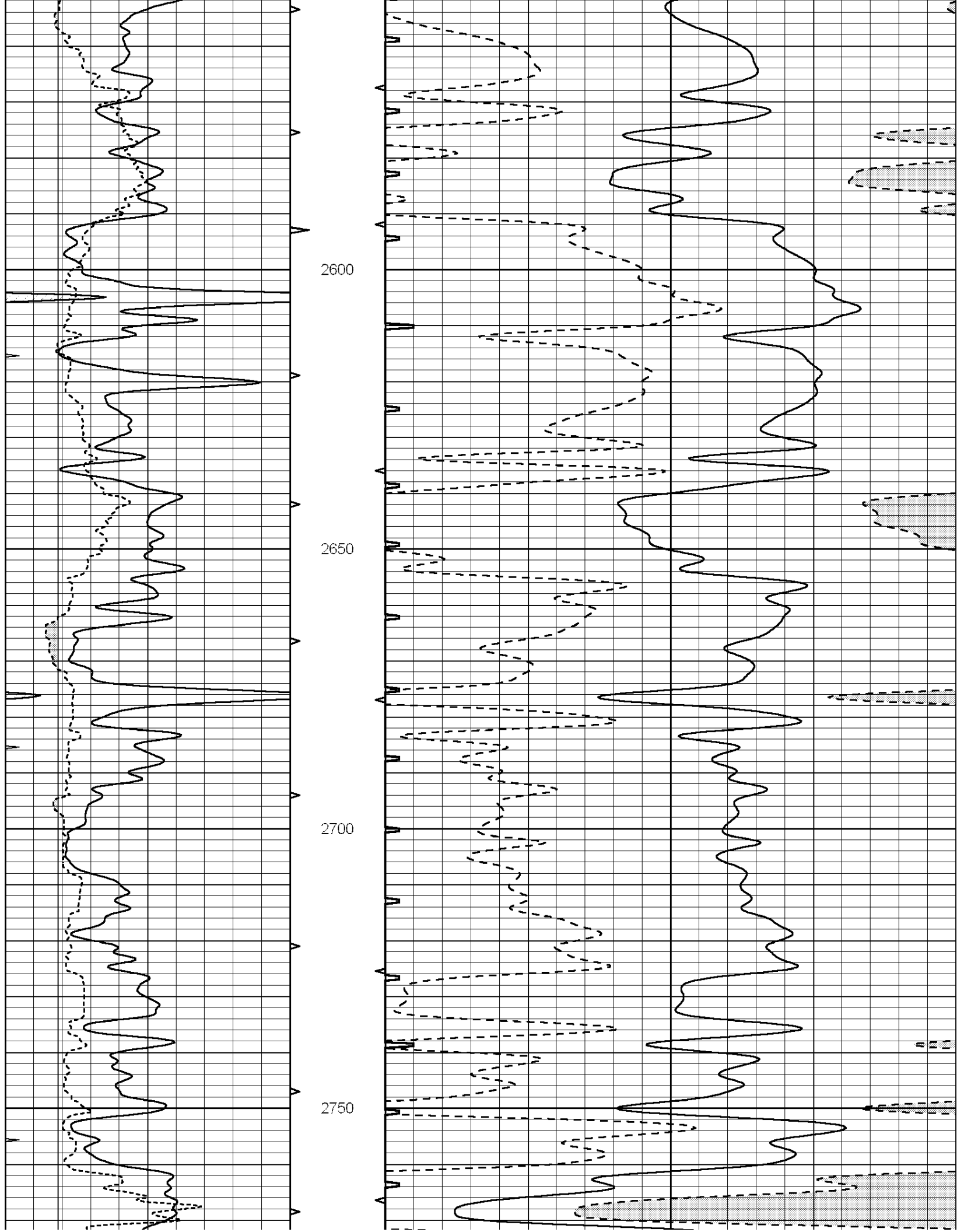


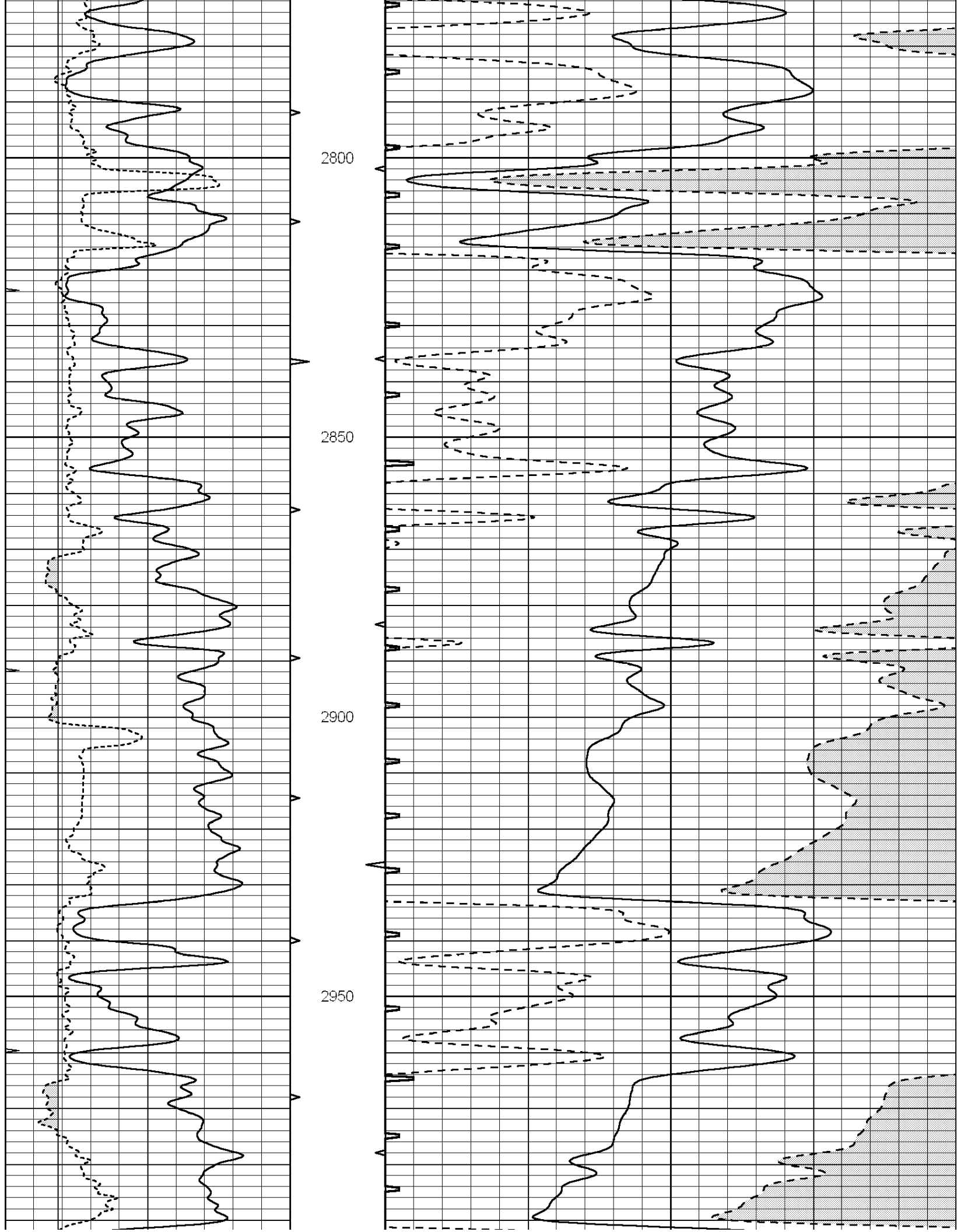


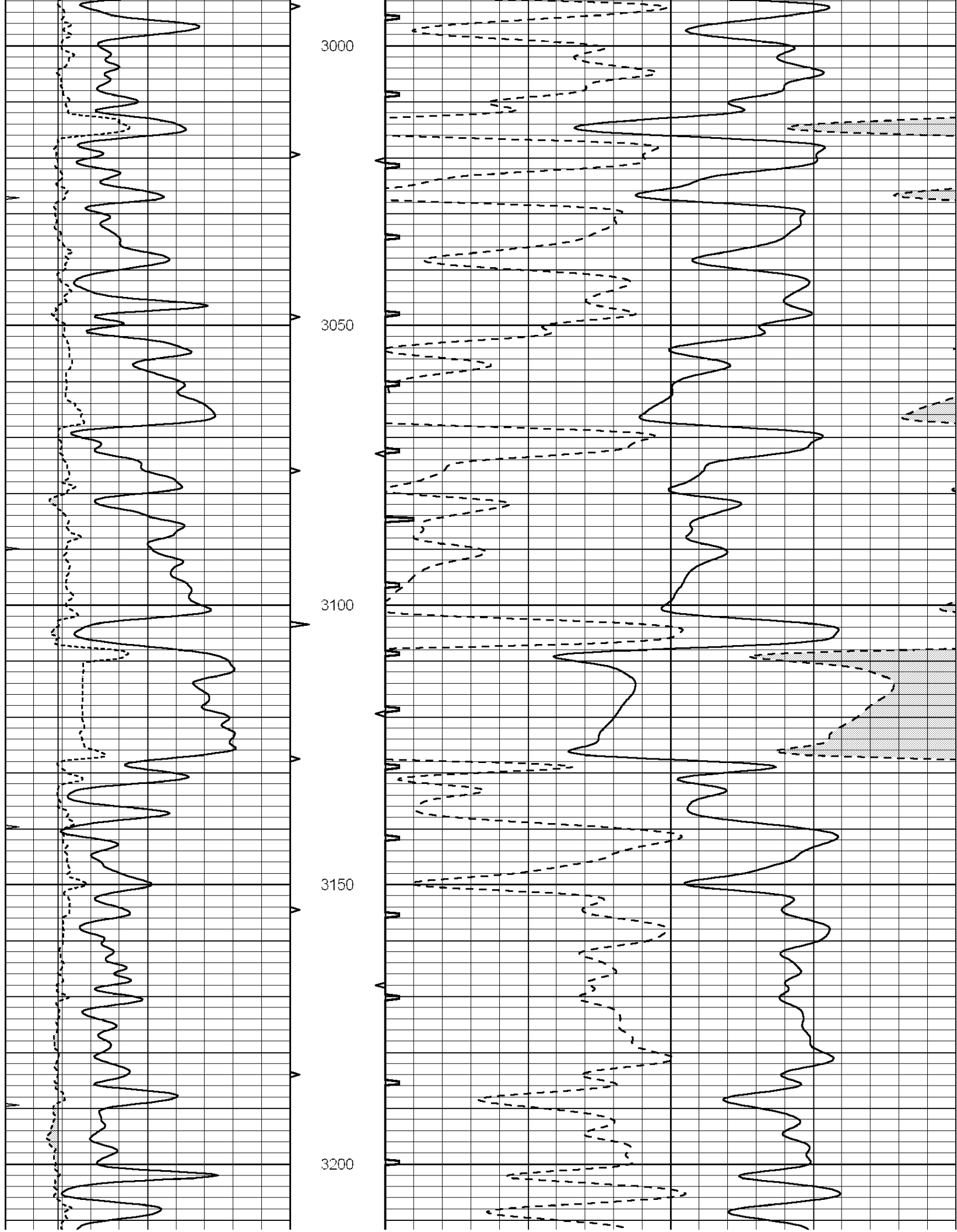


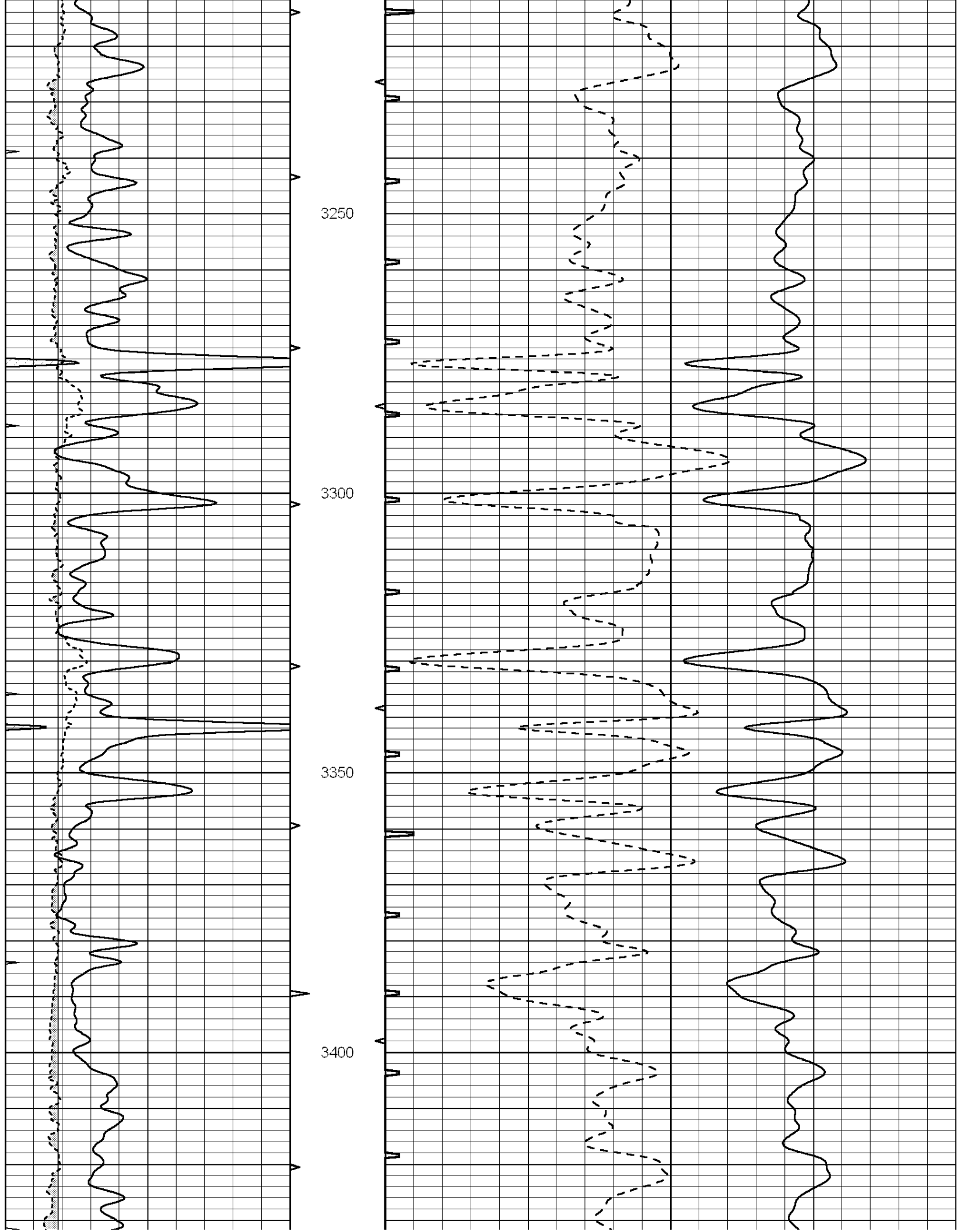


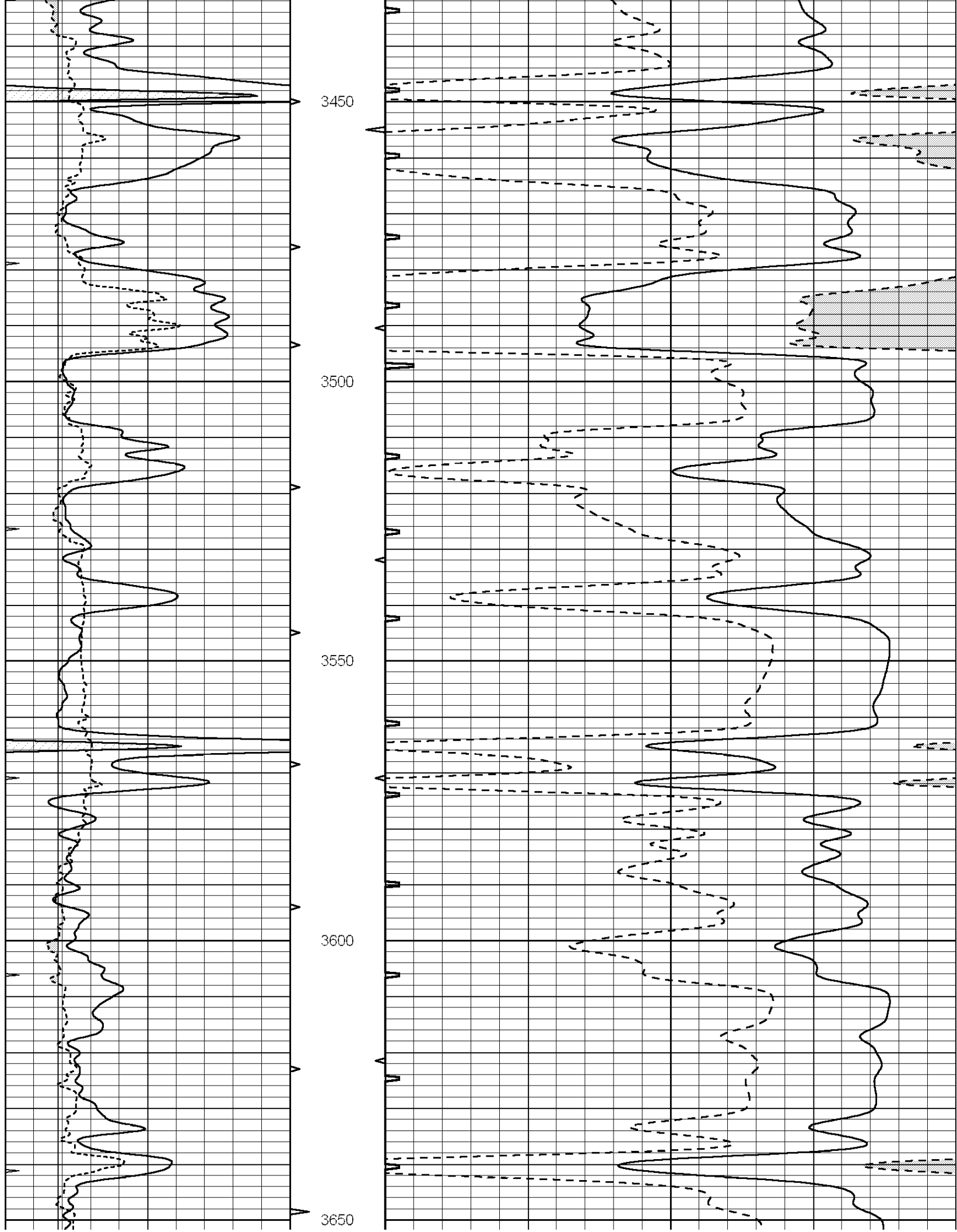


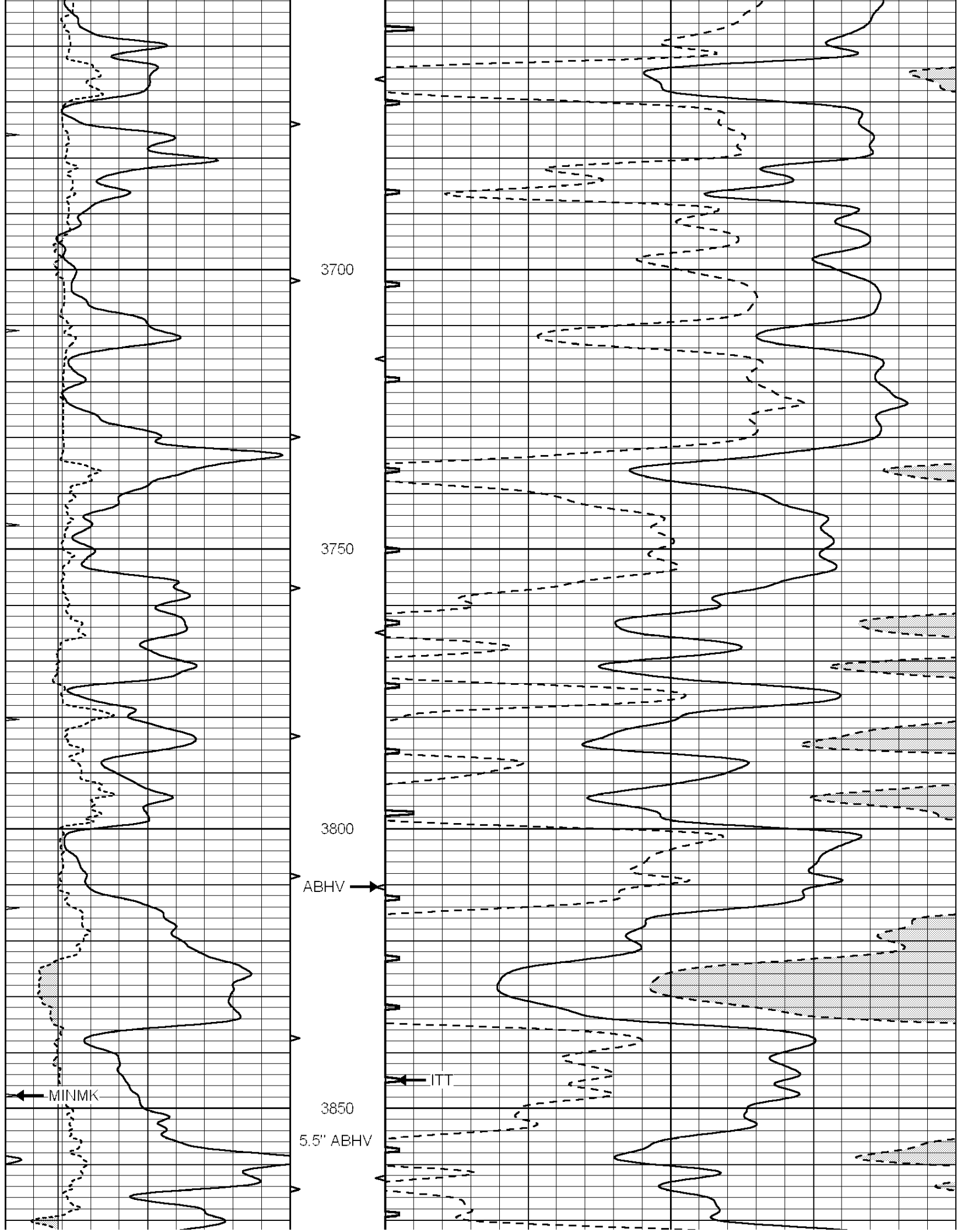


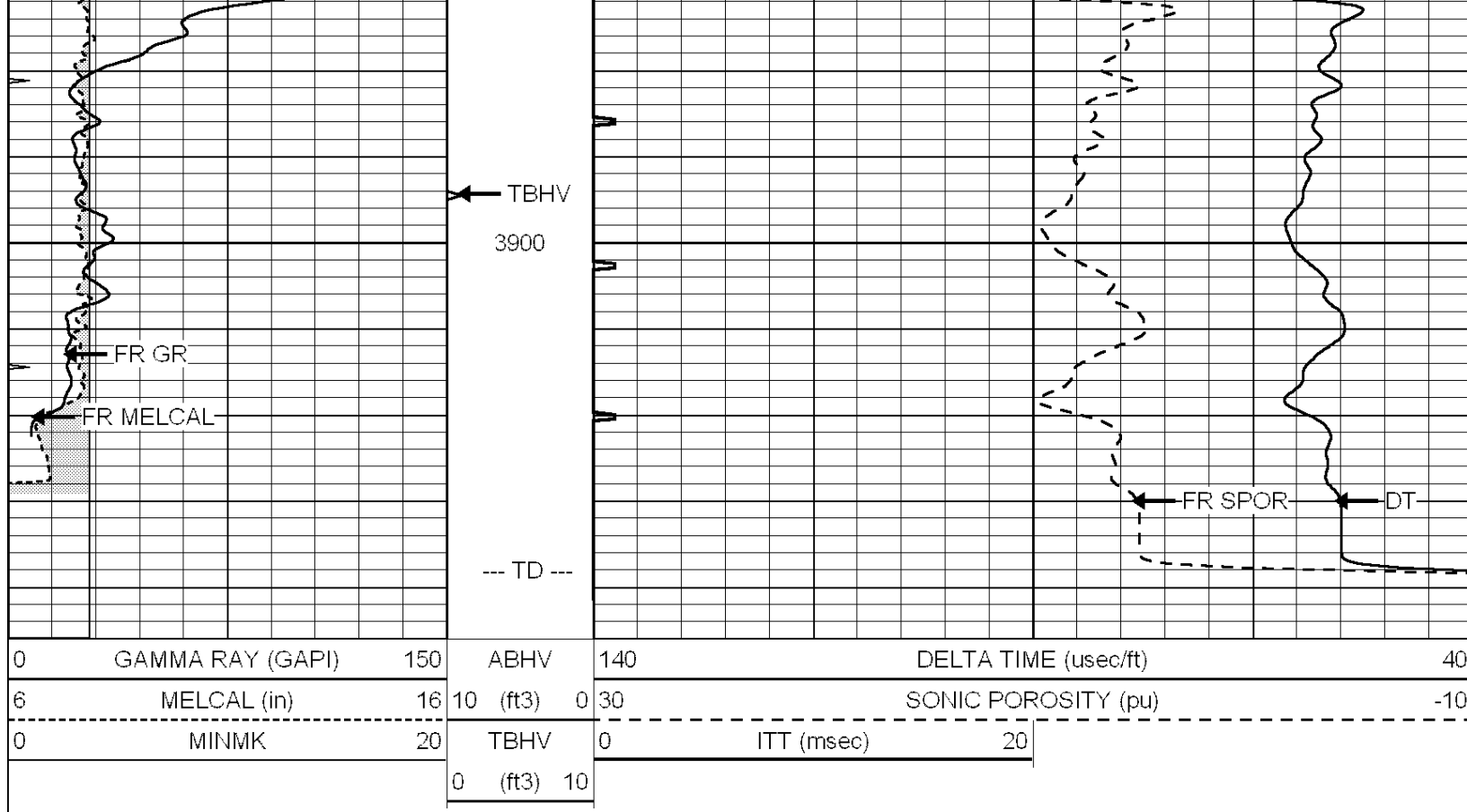










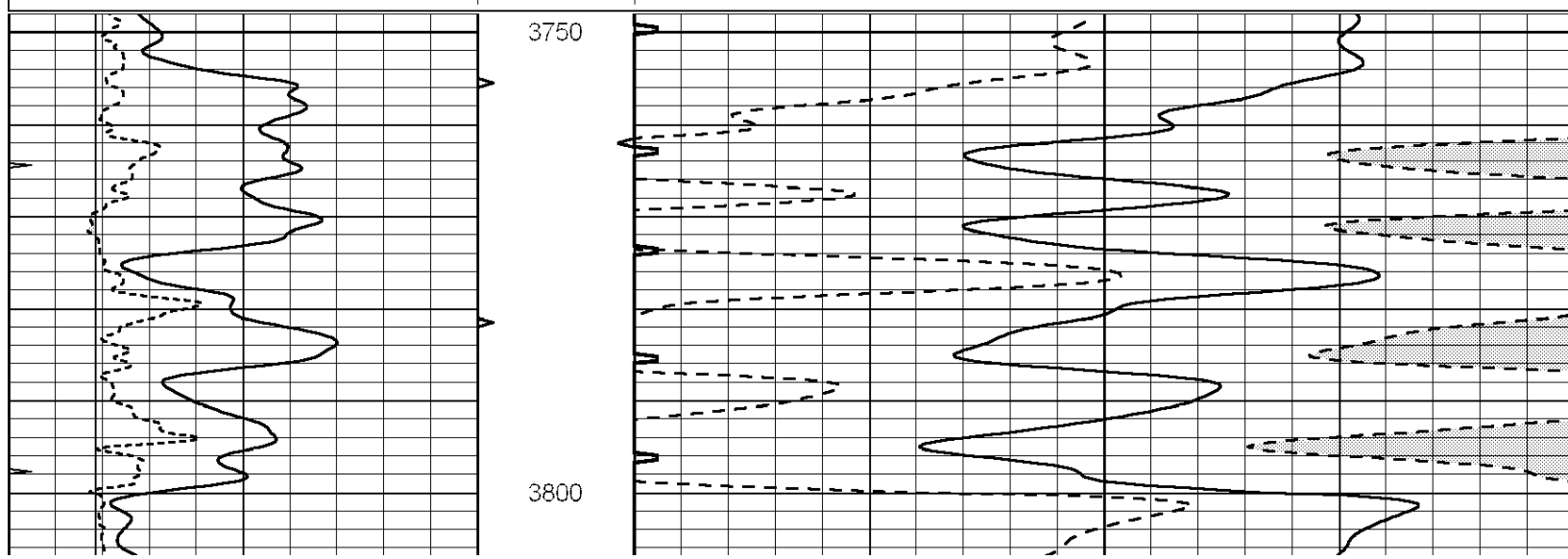


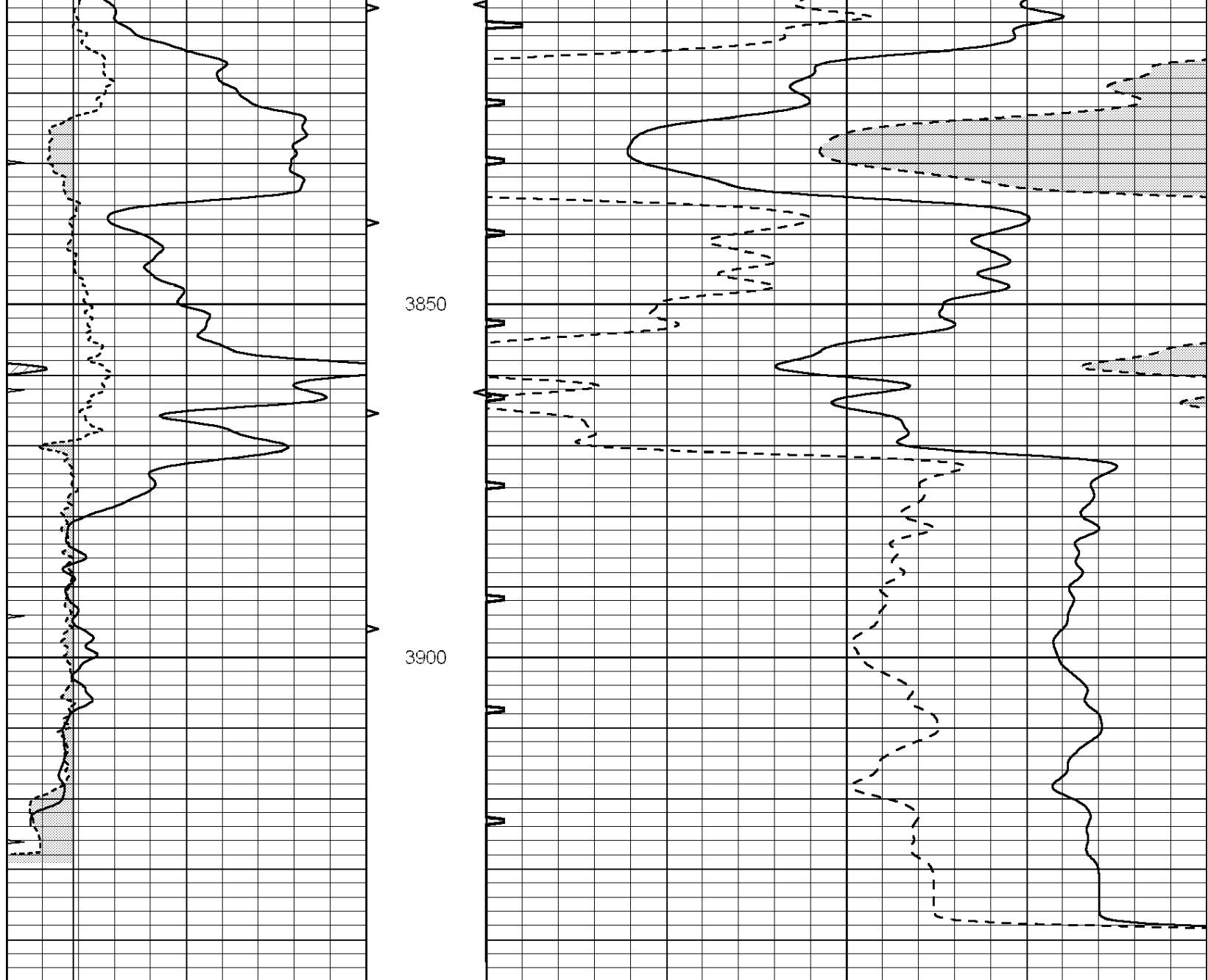
NABORS
COMPLETION & PRODUCTION SERVICES CO.

REPEAT SECTION

Database File: 23916ddn.db
 Dataset Pathname: pass5.2A
 Presentation Format: _slt
 Dataset Creation: Tue Mar 04 16:55:28 2014
 Charted by: Depth in Feet scaled 1:240

0	GAMMA RAY (GAPI)	150	ABHV	140	DELTA TIME (usec/ft)	40
6	MELCAL (in)	16	10 (ft3) 0	30	SONIC POROSITY (pu)	-10
0	MINMK	20	TBHV	0	ITT (msec)	20
			0 (ft3) 10			





0	GAMMA RAY (GAPI)	150	ABHV	140	DELTA TIME (usec/ft)	40
6	MELCAL (in)	16	10 (ft3)	0	SONIC POROSITY (pu)	-10
0	MINMK	20	TBHV	0	ITT (msec)	20
			0 (ft3)	10		