



Pioneer Energy Services

Borehole Compensated Sonic Log

15-109-21,249-00-00

API No.	15-109-21,249-00-00		
Company	Russell Oil, Inc.		
Well	Edwards Trust 'B' #2-32		
Field	Wildcat		
County	Logan	State	Kansas
Location	760' FSL & 2110' FWL		
Sec: 32	Twp: 15S	Rge: 34W	Elevation 3045
Permanent Datum	Ground Level	Kelly Bushing	11 Ft. Above Perm. Datum
Log Measured From	Kelly Bushing		
Drilling Measured From	Kelly Bushing		
Date	2/21/2014		
Run Number	Two		
Type Log	BHC Sonic		
Depth Driller	4750		
Depth Logger	4751		
Bottom Logged Interval	4740		
Top Logged Interval	300		
Type Fluid In Hole	Chemical		
Salinity, PPM CL	6500		
Density Level	9.3		
Max. Rec. Temp. F	Full		
Operating Rig Time	124		
Equipment -- Location	5 Hours		
Recorded By	15 Hays		
Witnessed By	D Kerr		
	Kitt Noah		

Other Services
CNL/CDL
MEL/DIL

Elevation
K.B. 3056
D.F.
G.L. 3045

Borehole Record	Casing Record
-----------------	---------------

Run No.	Bit	From	To	Size	Wgt.	From	To
1	12.25	00	334	8.625	24#	00	334
2	7.875	334	4750				

<<< Fold Here >>>

All interpretations are opinions based on inferences from electrical or other measurements and we cannot and do not guarantee the accuracy or correctness of any interpretation, and we shall not, except in the case of gross or willful negligence on our part, be liable or responsible for any loss, costs, damages, or expenses incurred or sustained by anyone resulting from any interpretation made by any of our officers, agents or employees. These interpretations are also subject to our general terms and conditions set out in our current Price Schedule.

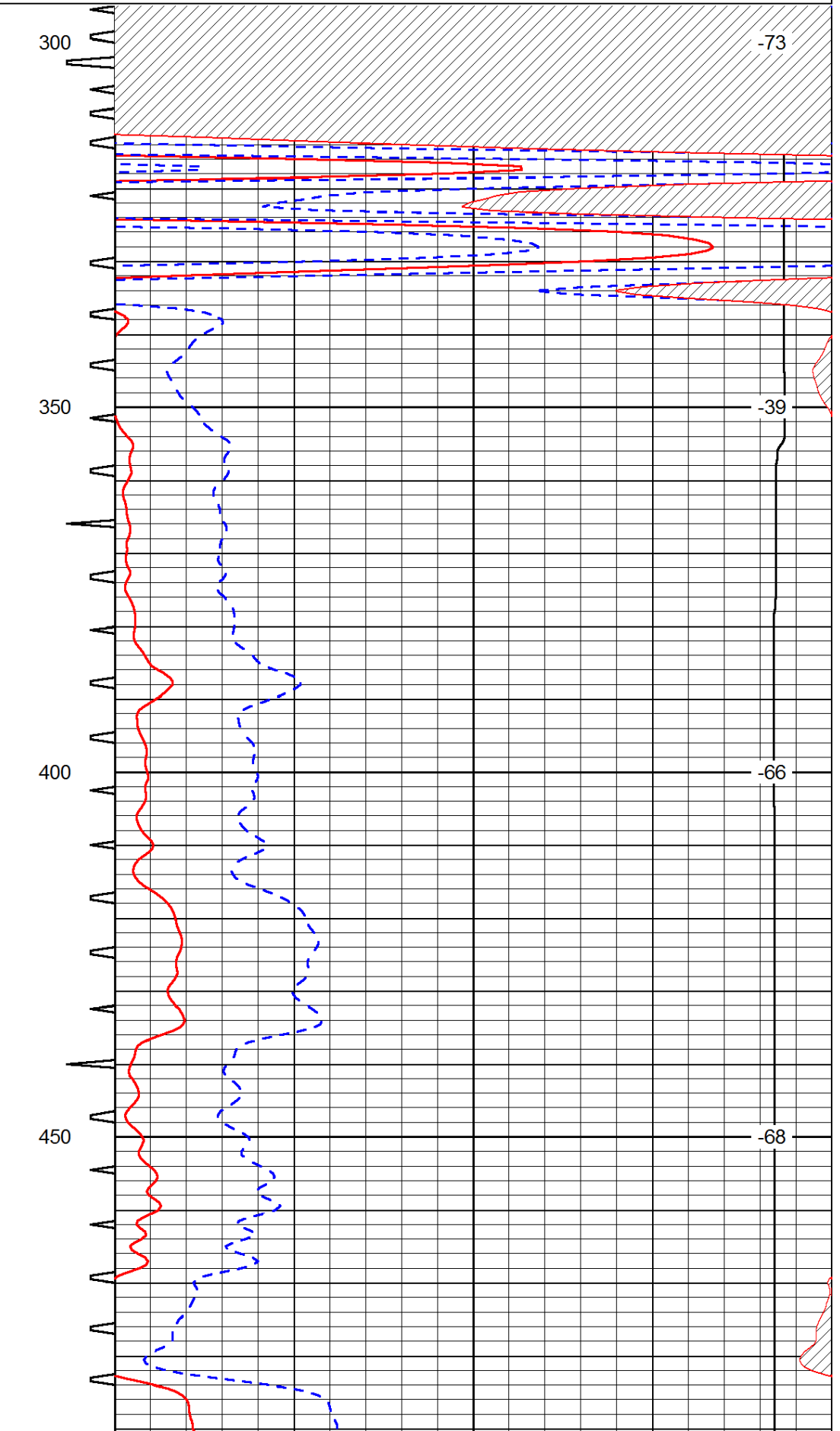
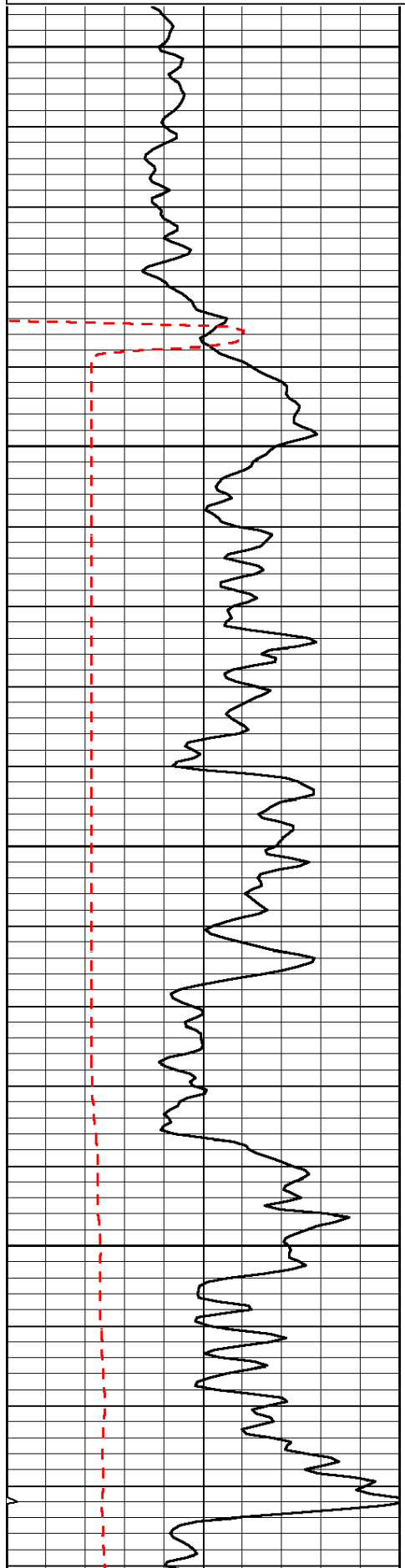
Comments

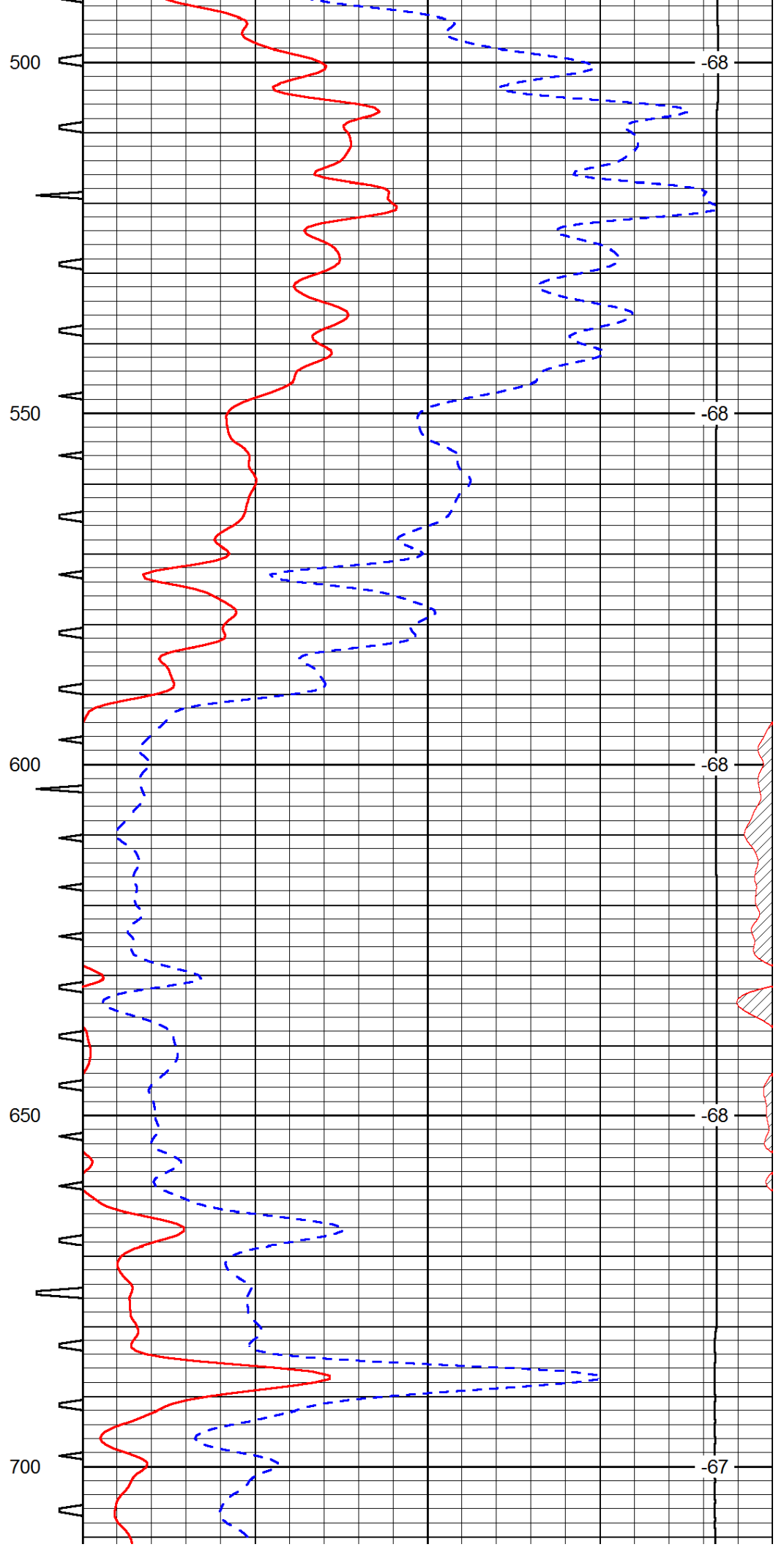
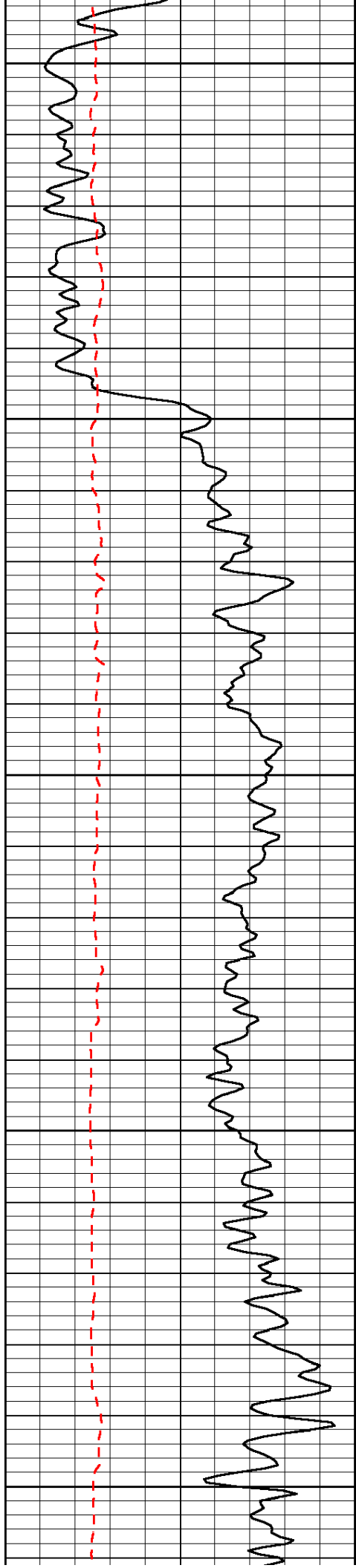
Thank you for using Pioneer Energy Services
www.pioneerenergy.com
 785 625 3858

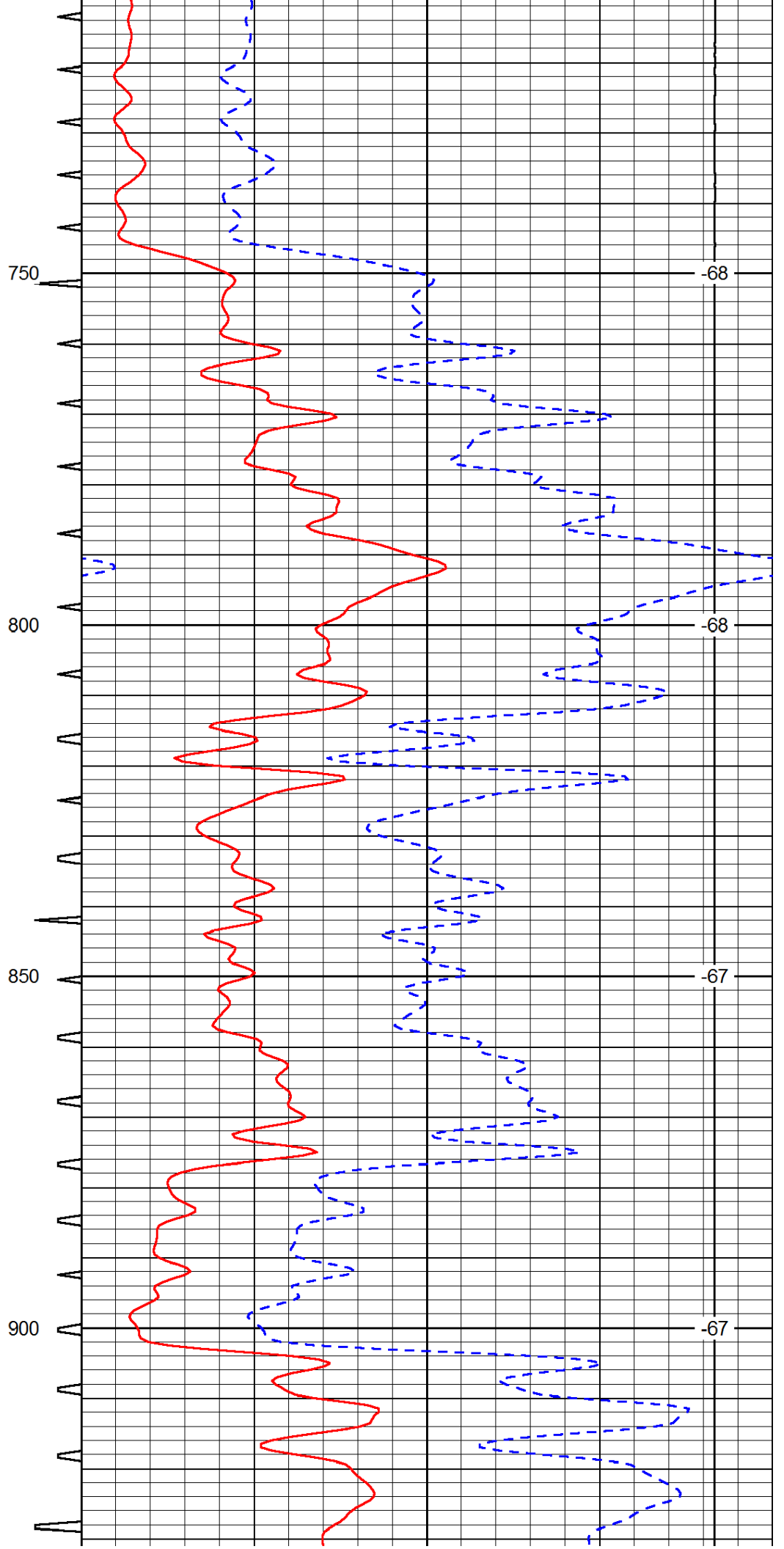
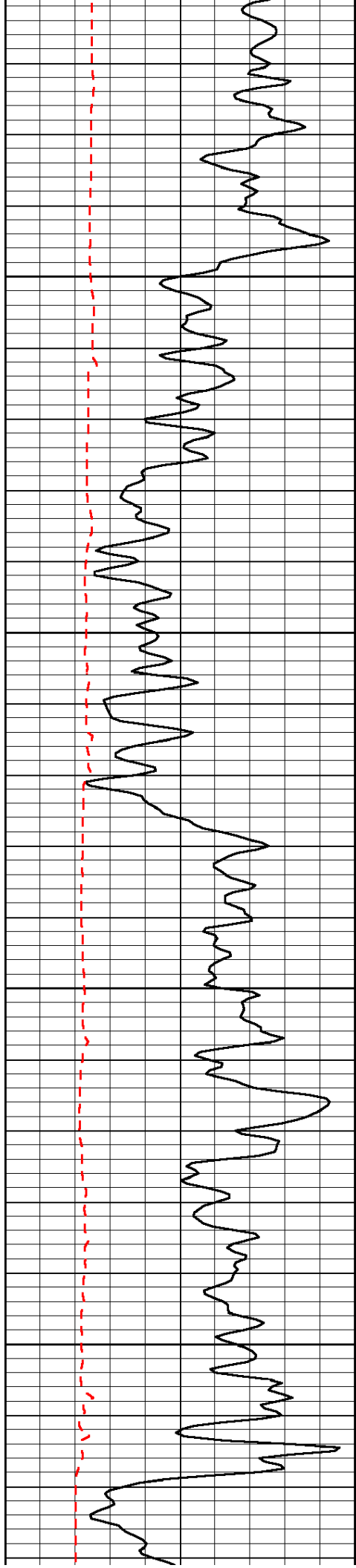
 Pence KS, West to the Scott-Wichita County Line,
 North to Logan County Line, North East Into at Cattle Guard

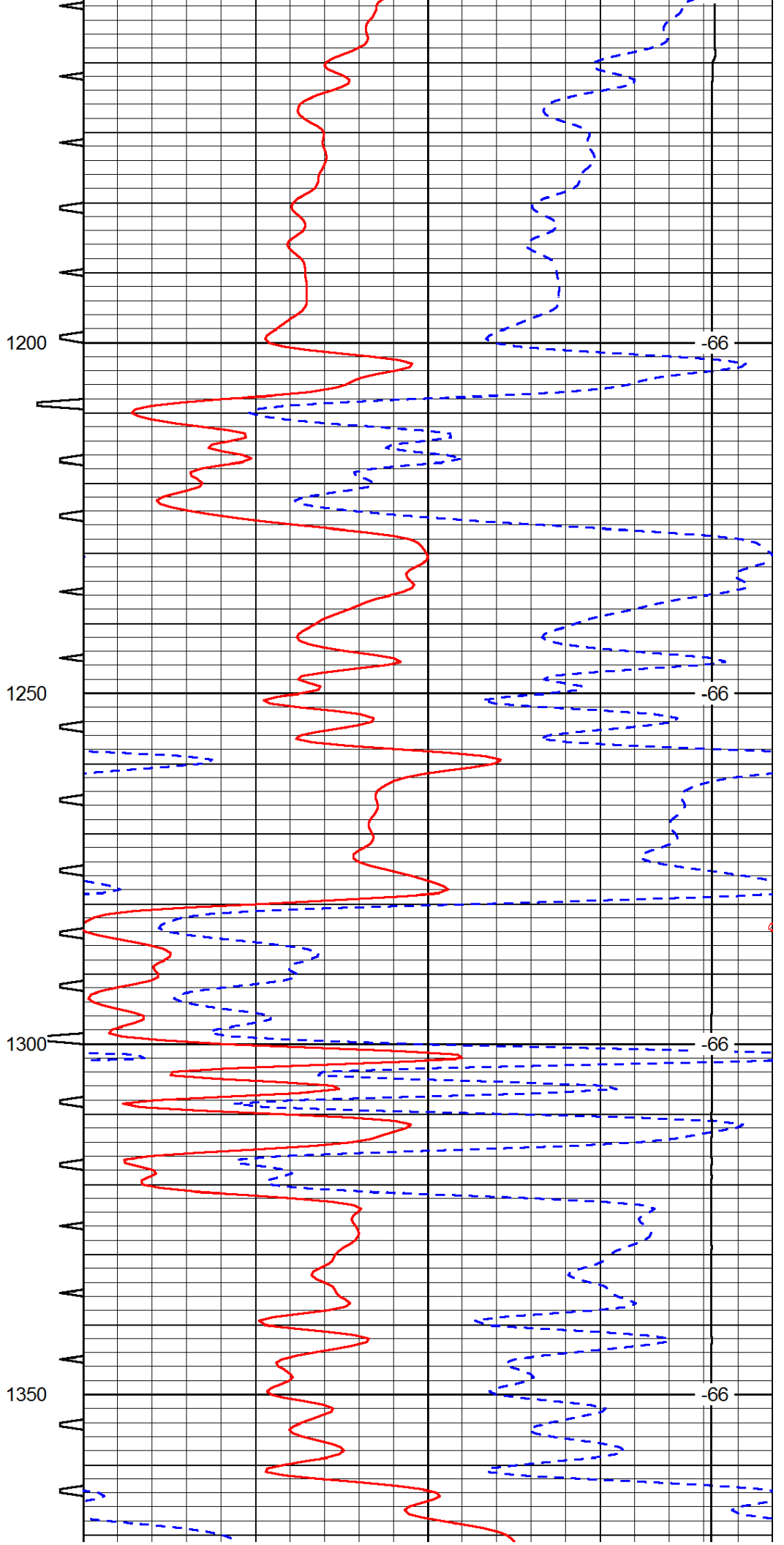
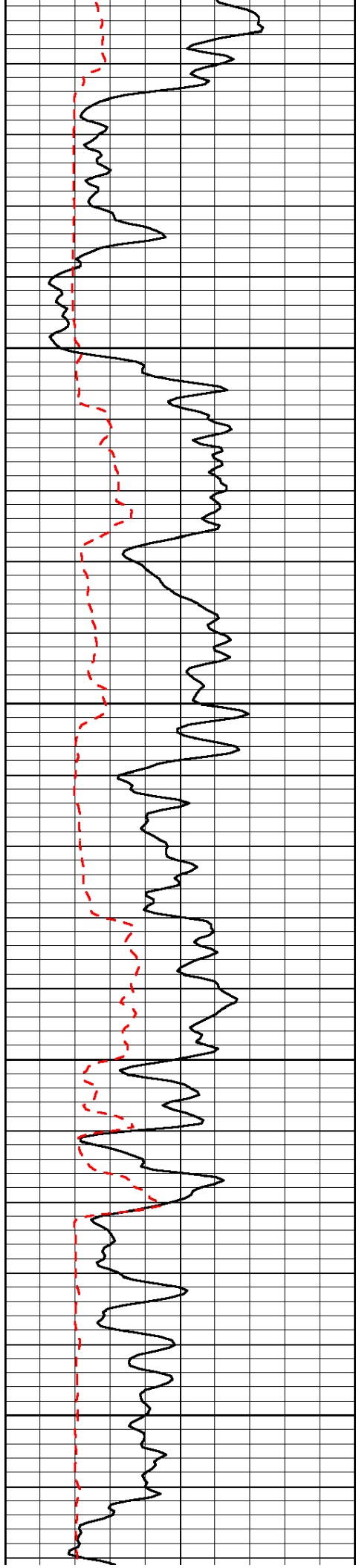
0	Gamma Ray	150	Sonic Int	140	Delta Time (usec/ft)	40
150	Gamma Ray	300	5	0	SPOR	-10
6	Caliper (GAPI)	16		15000	LTEN (lb)	0

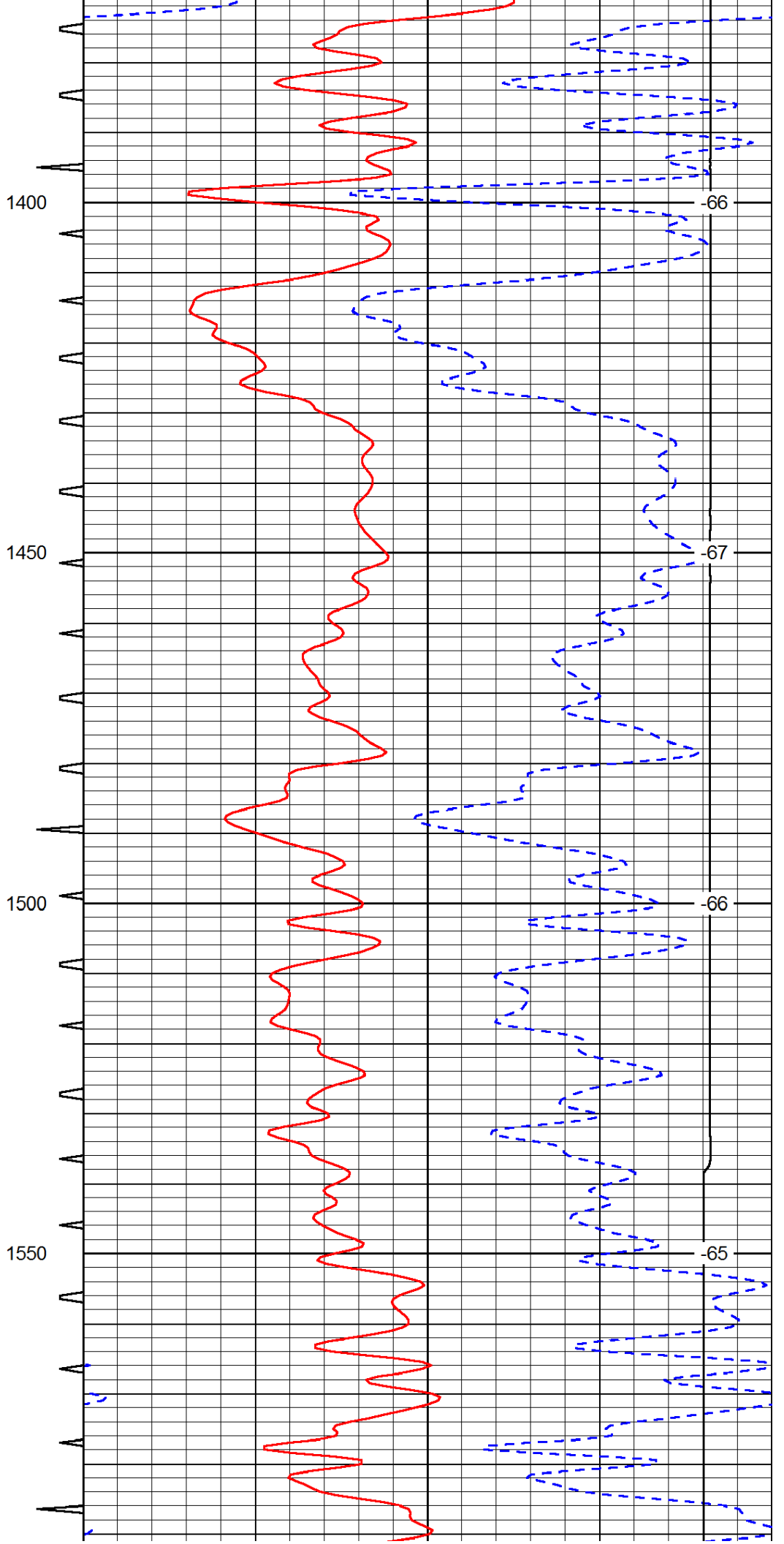
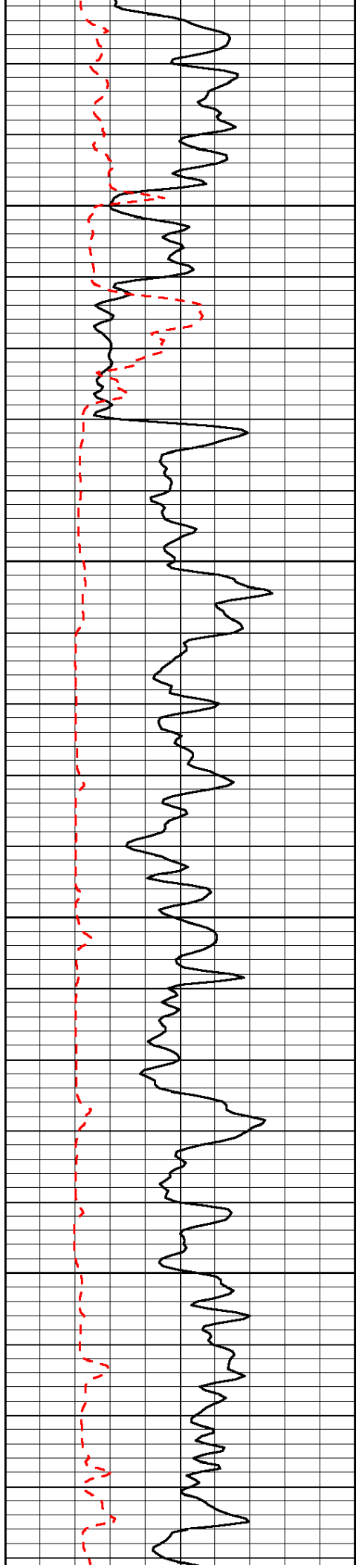
LSPD

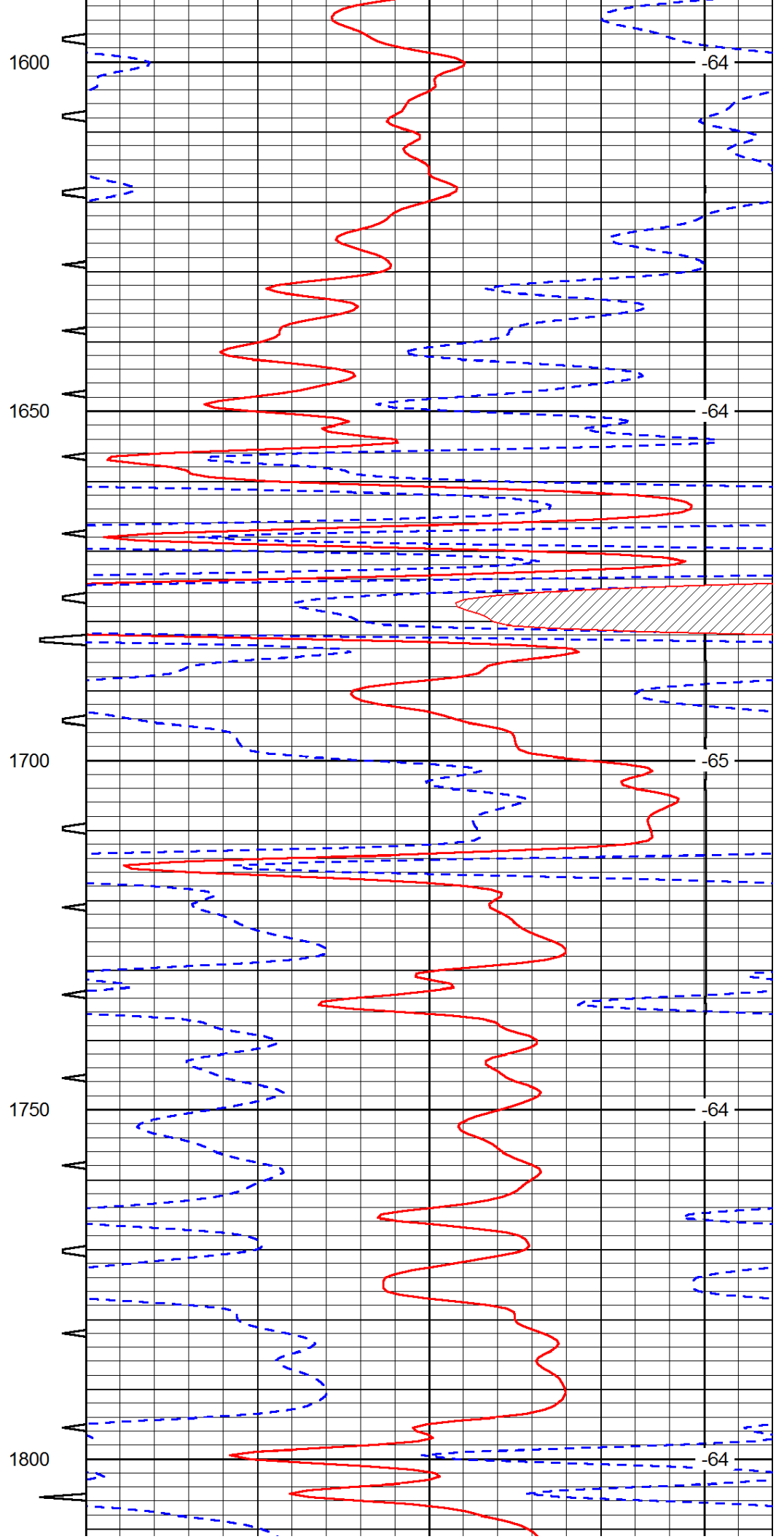
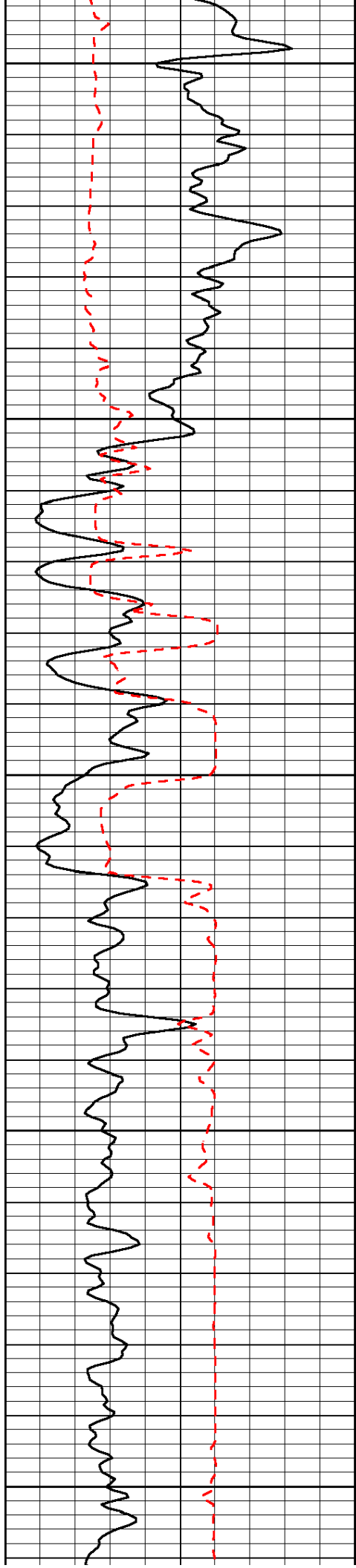


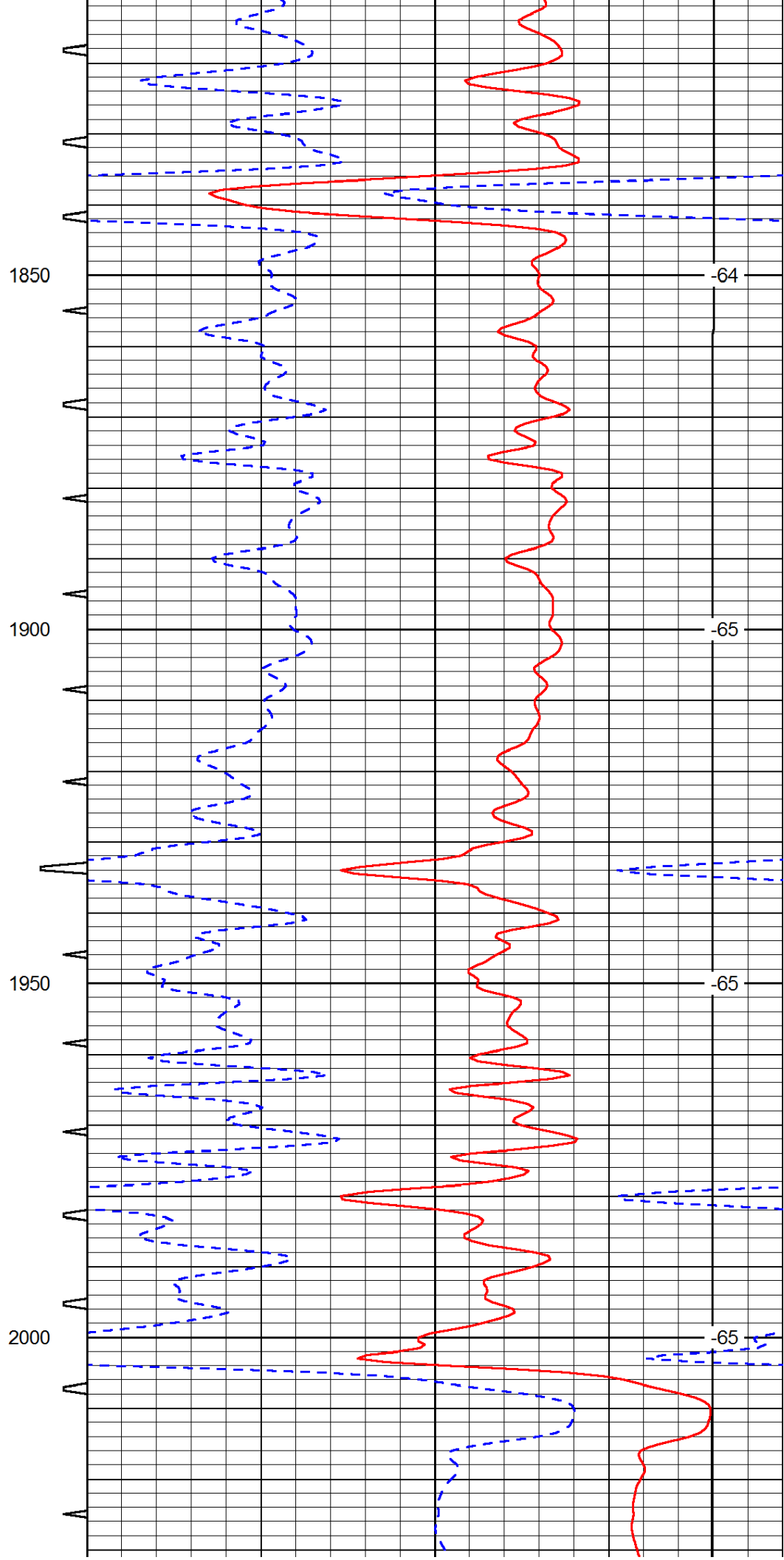
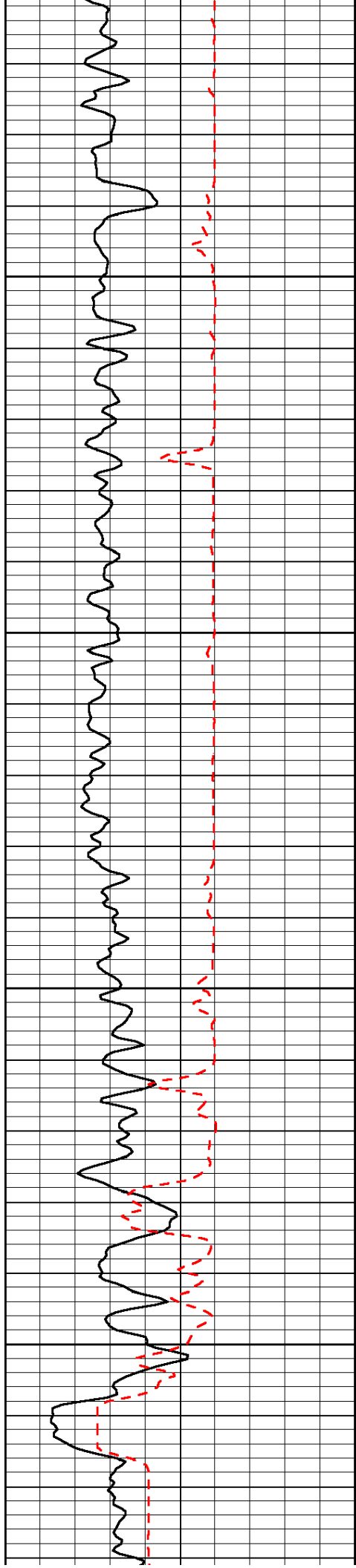


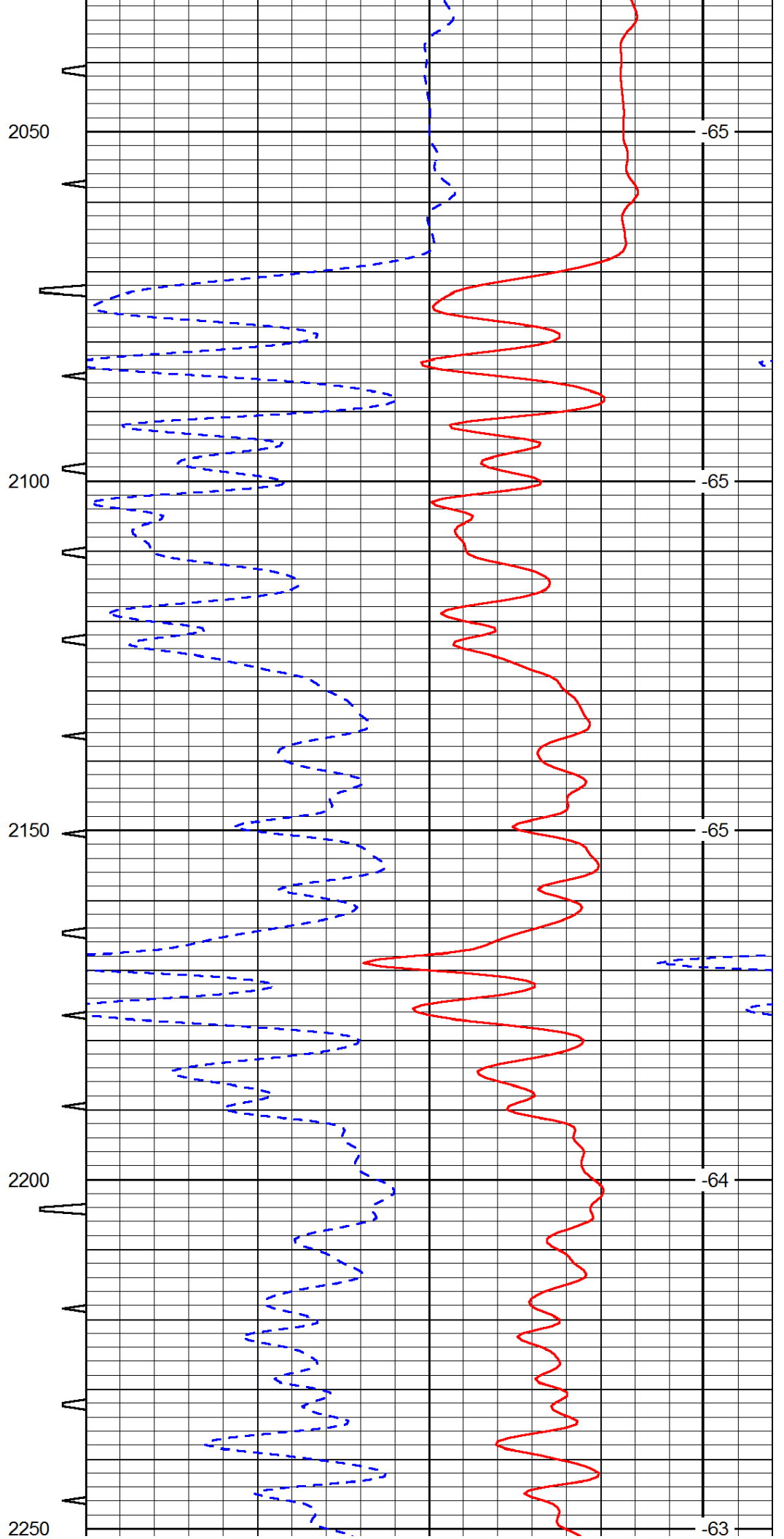
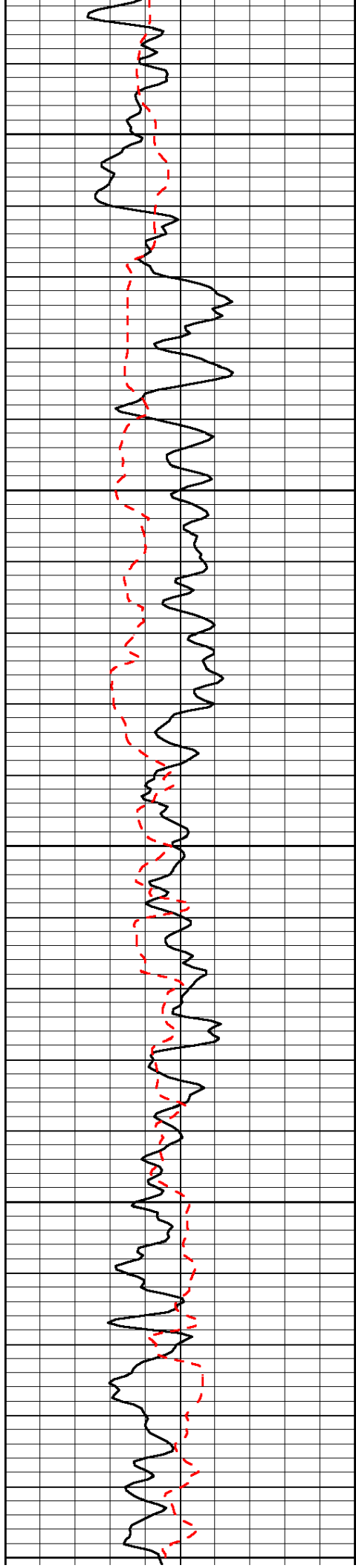


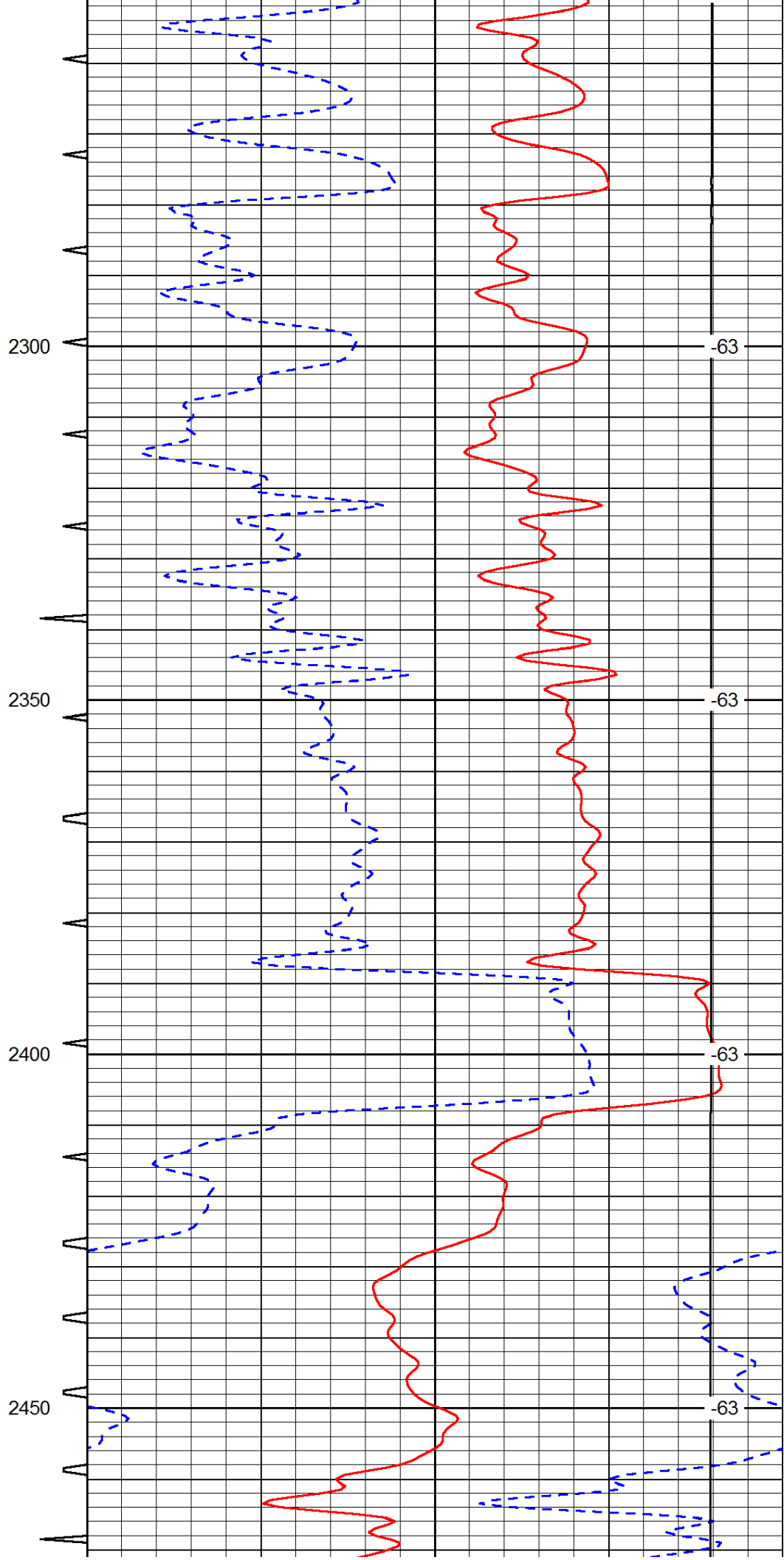
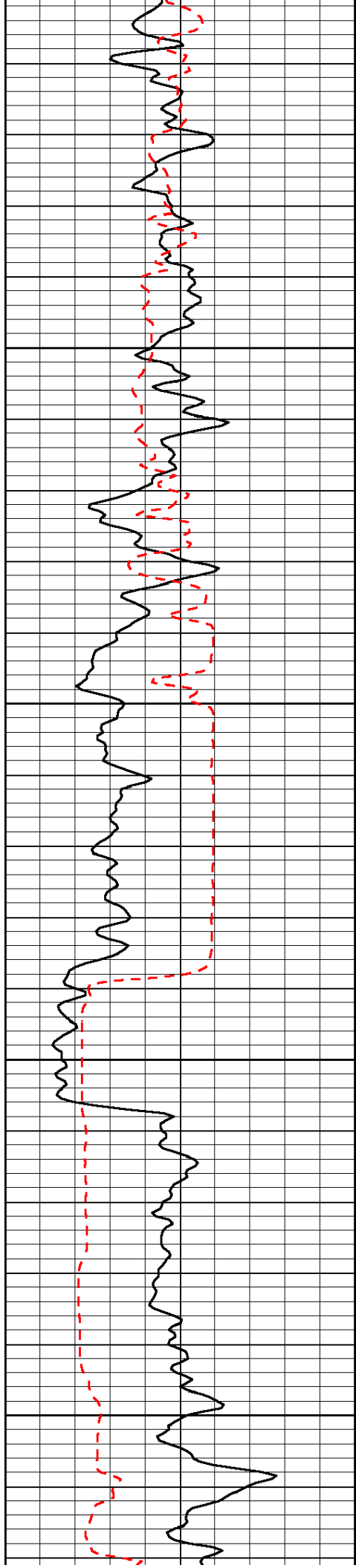


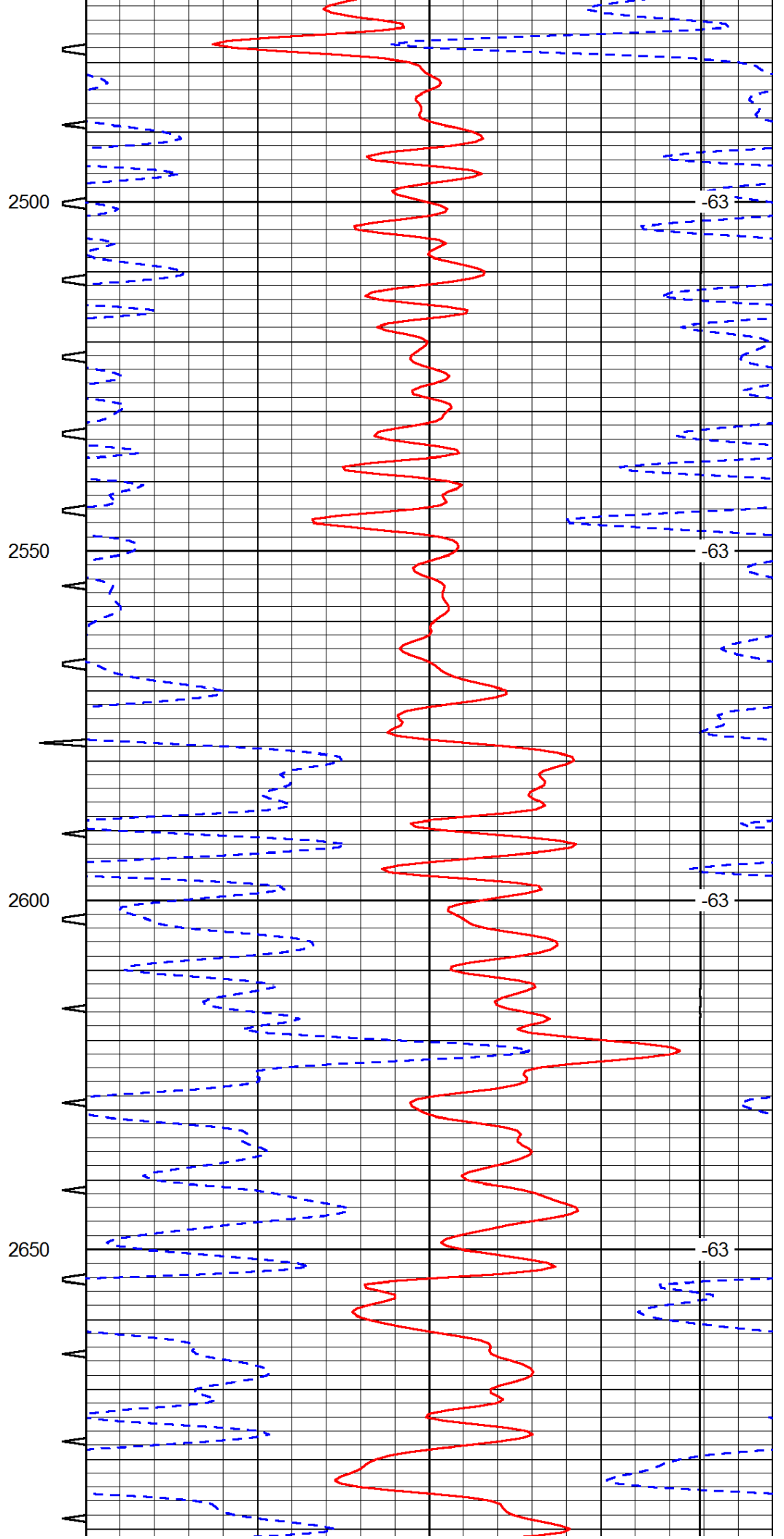
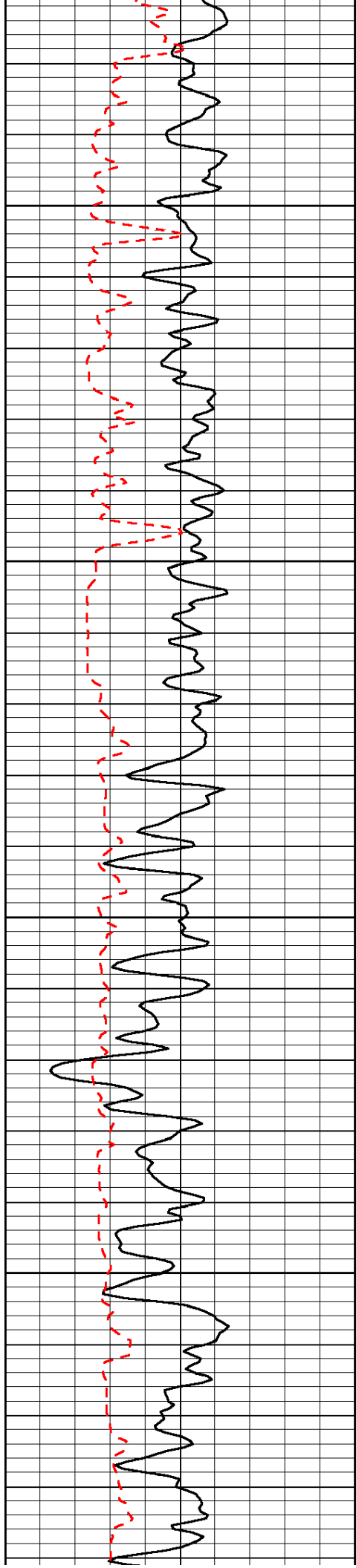


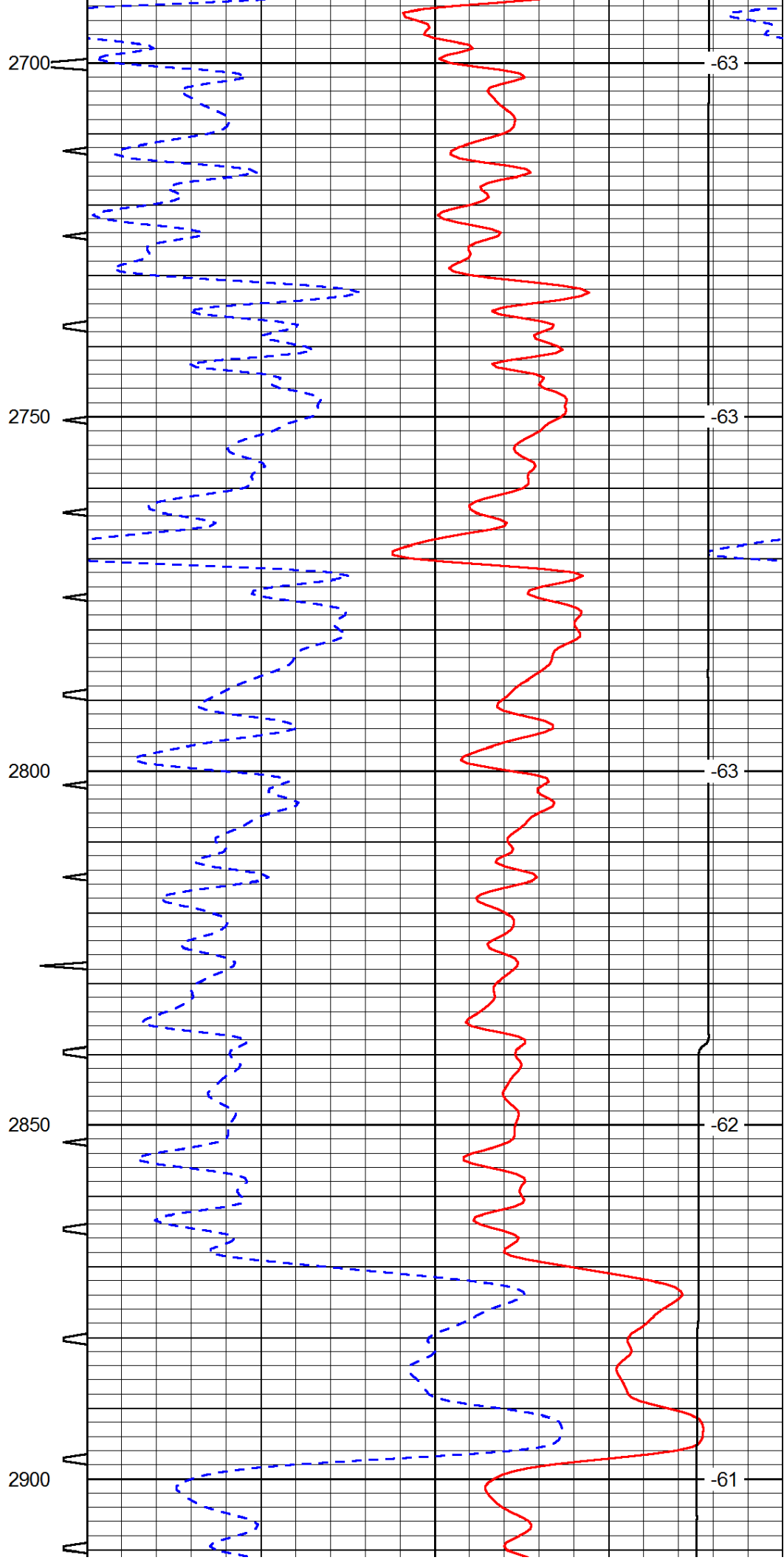
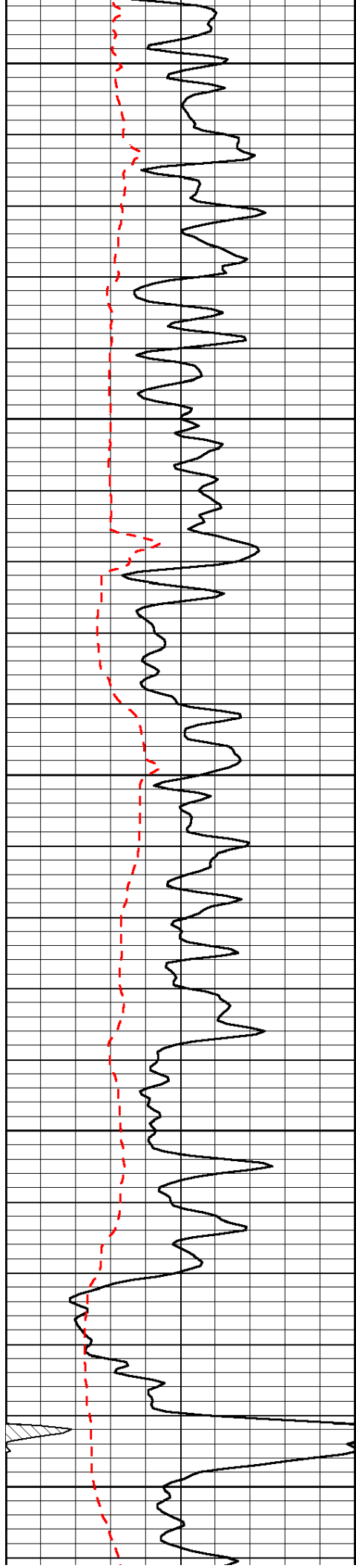


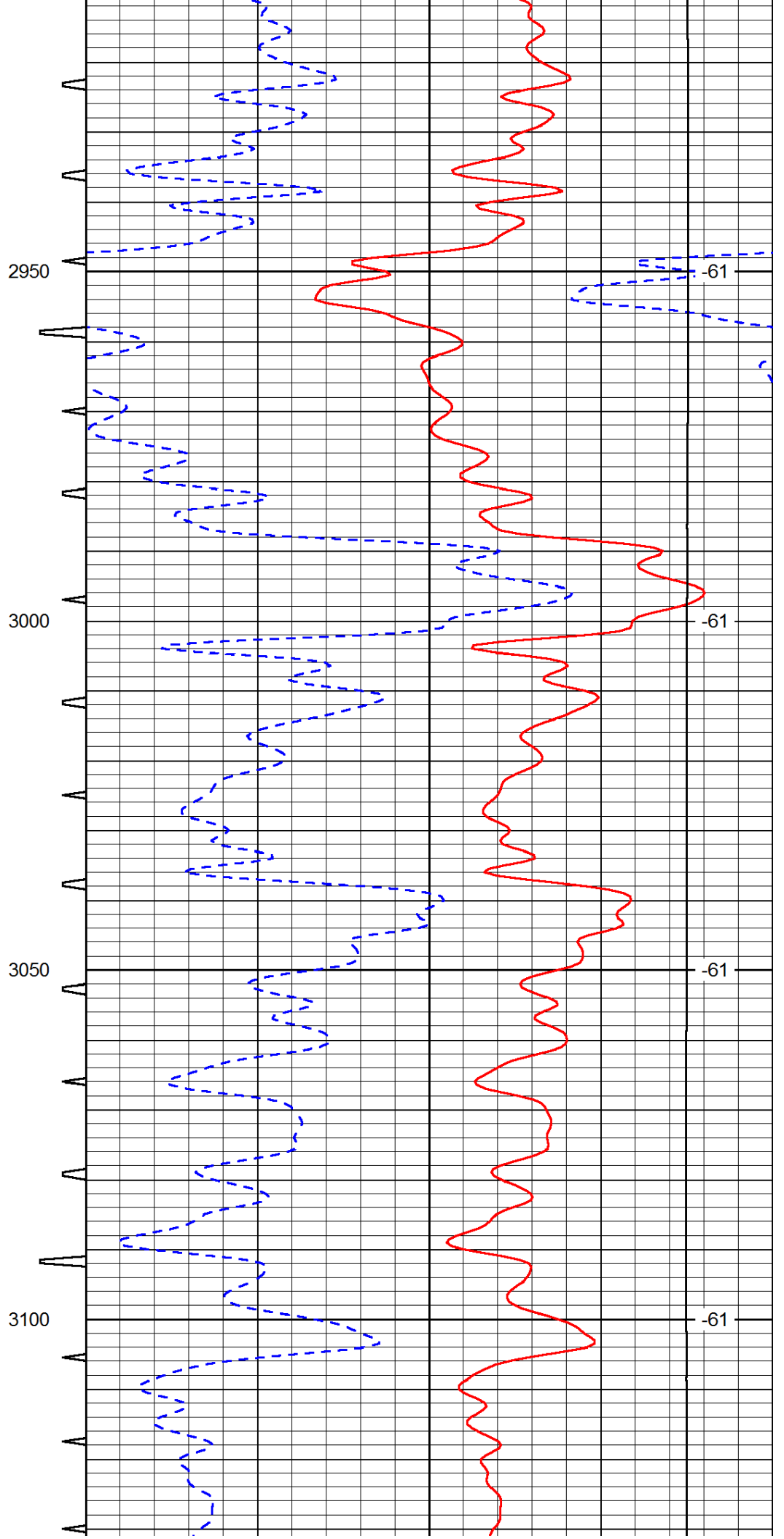
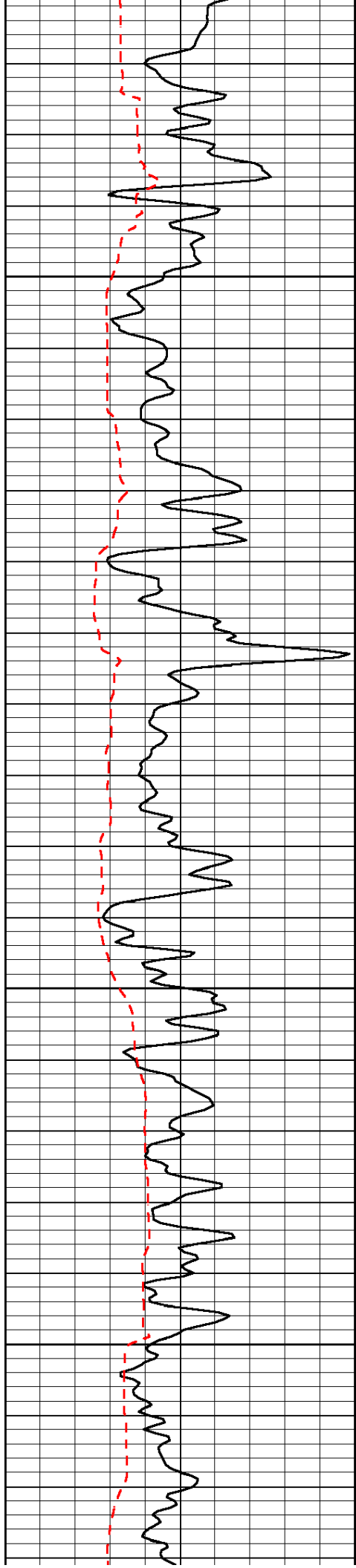


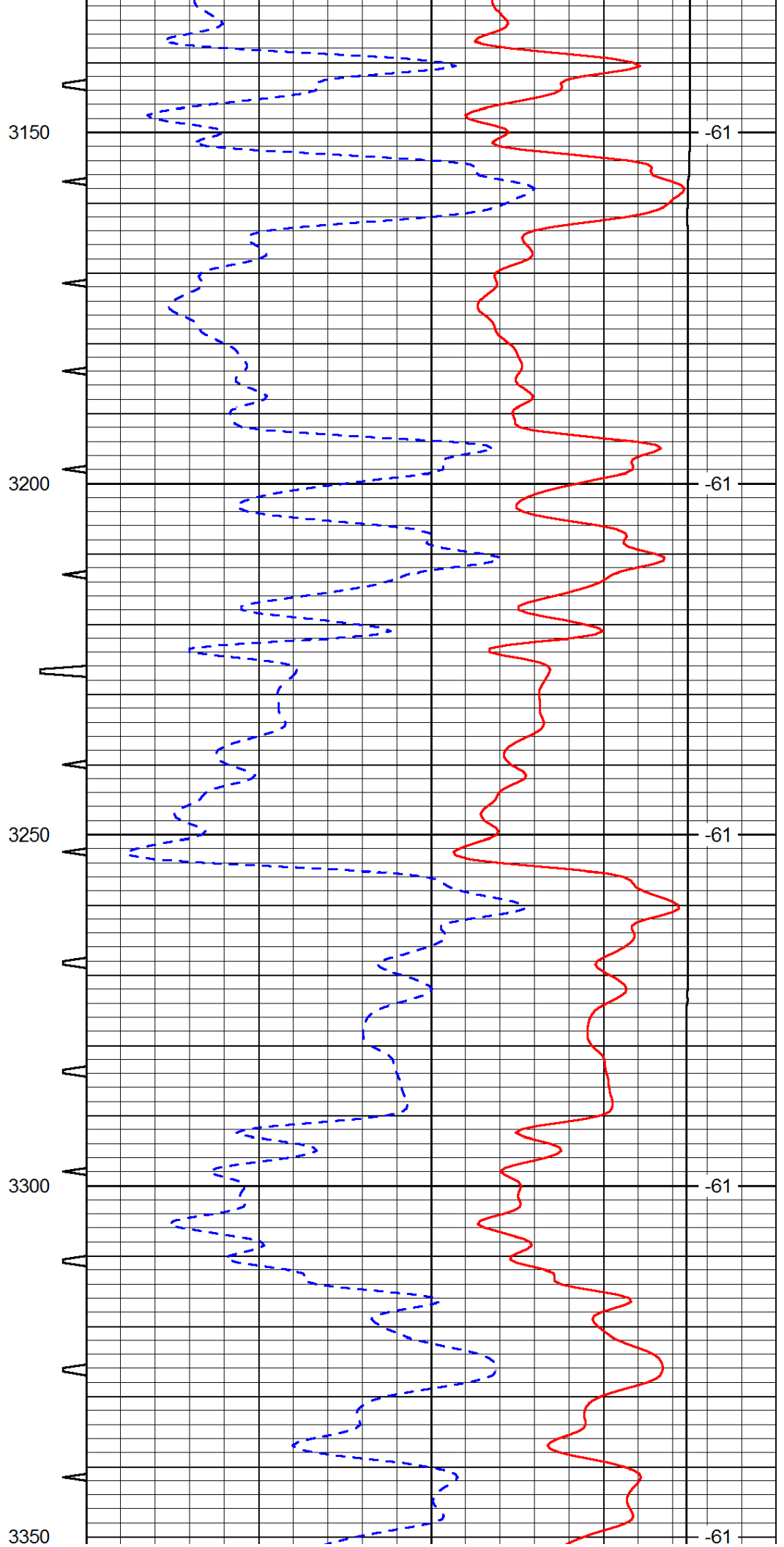
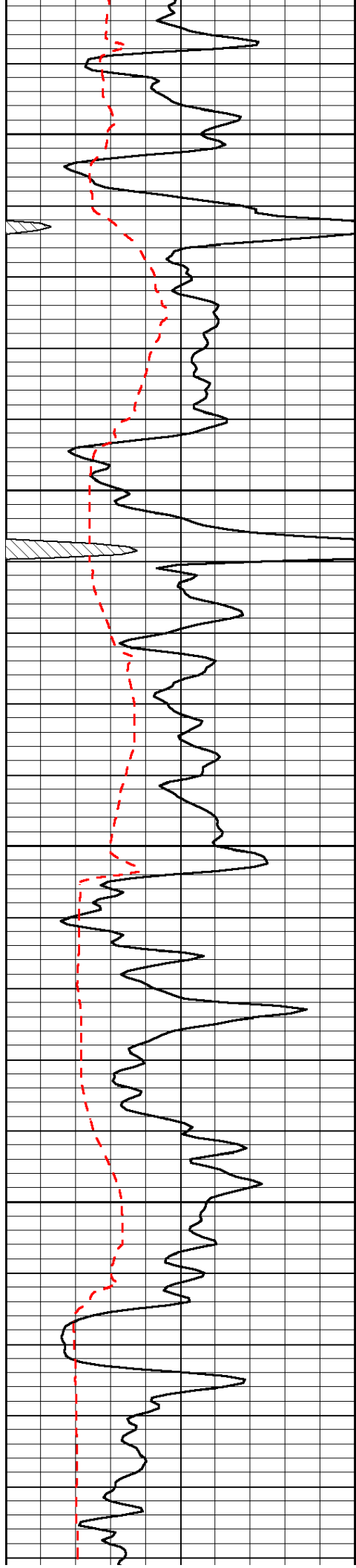


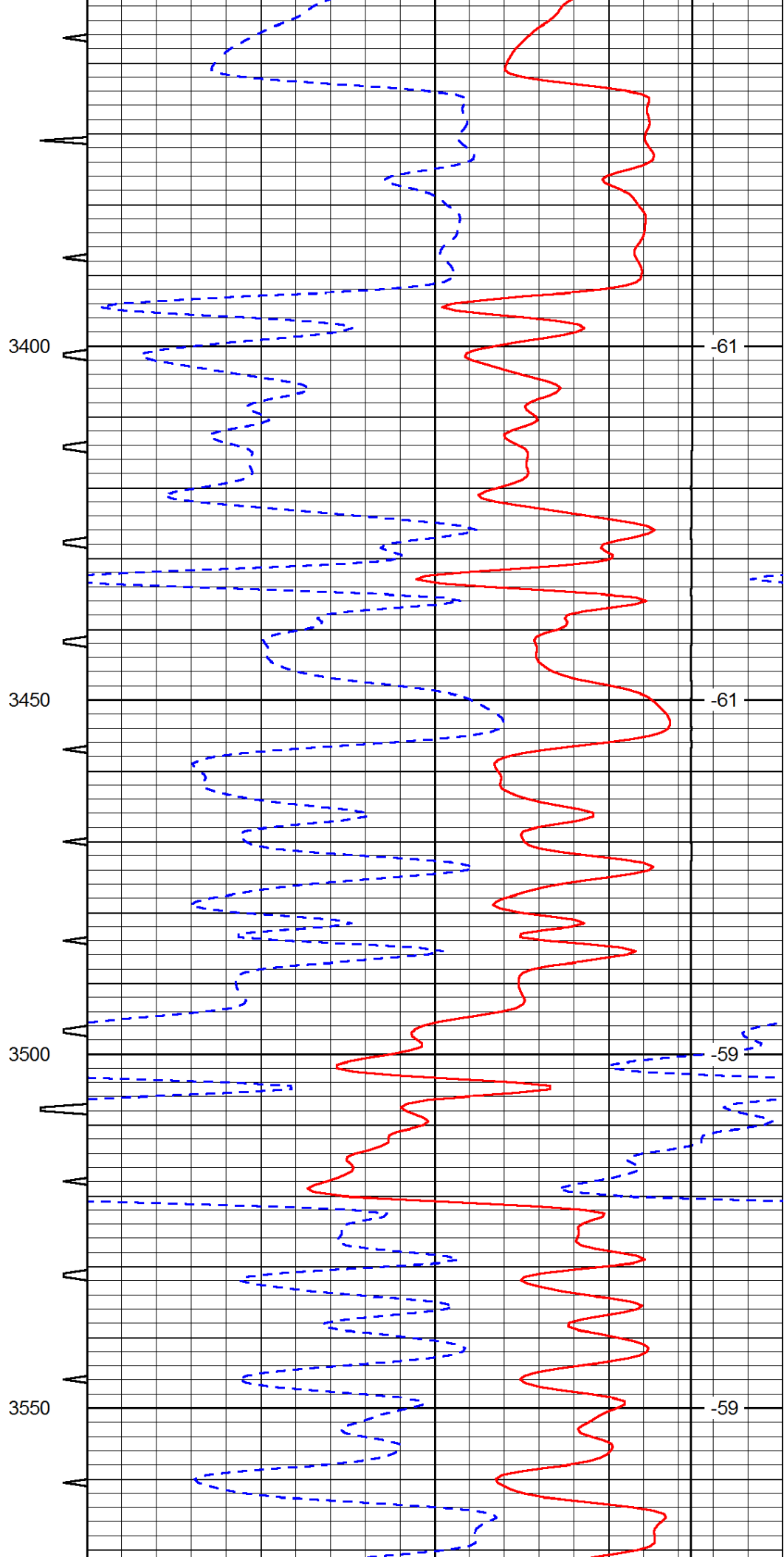
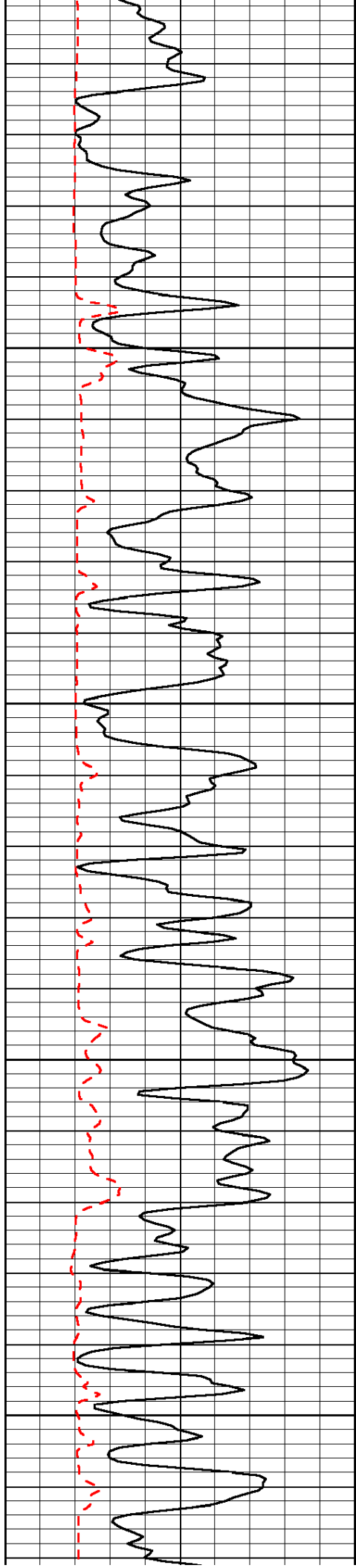


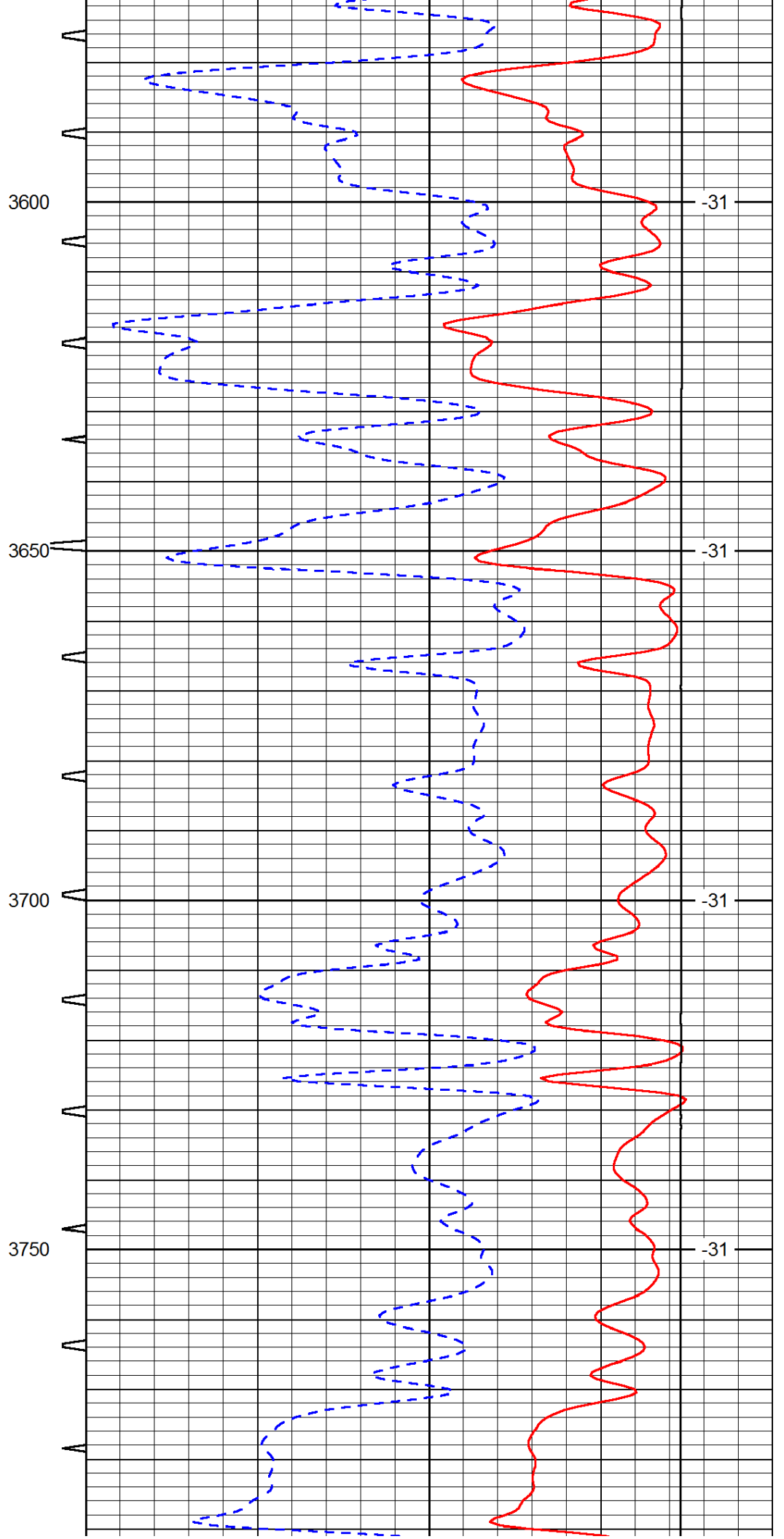
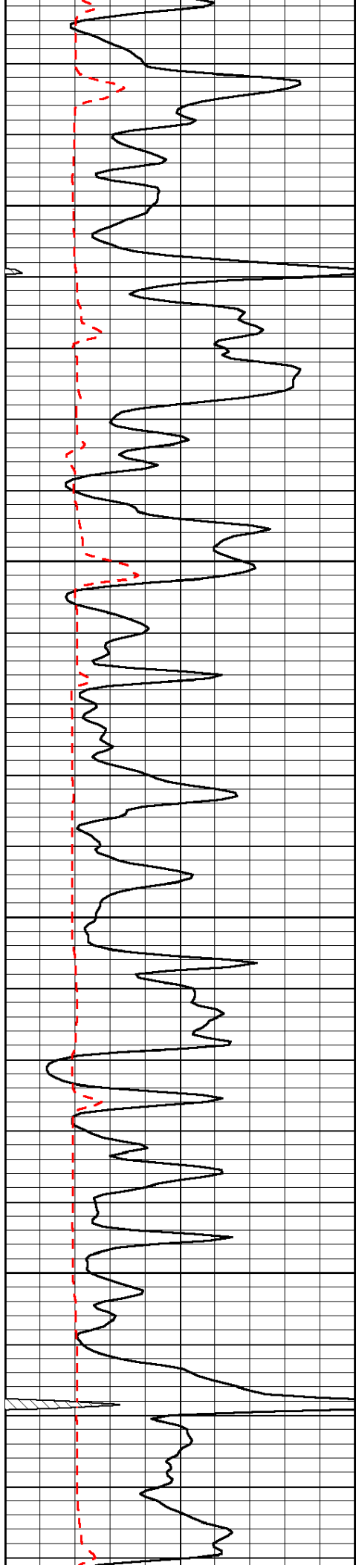


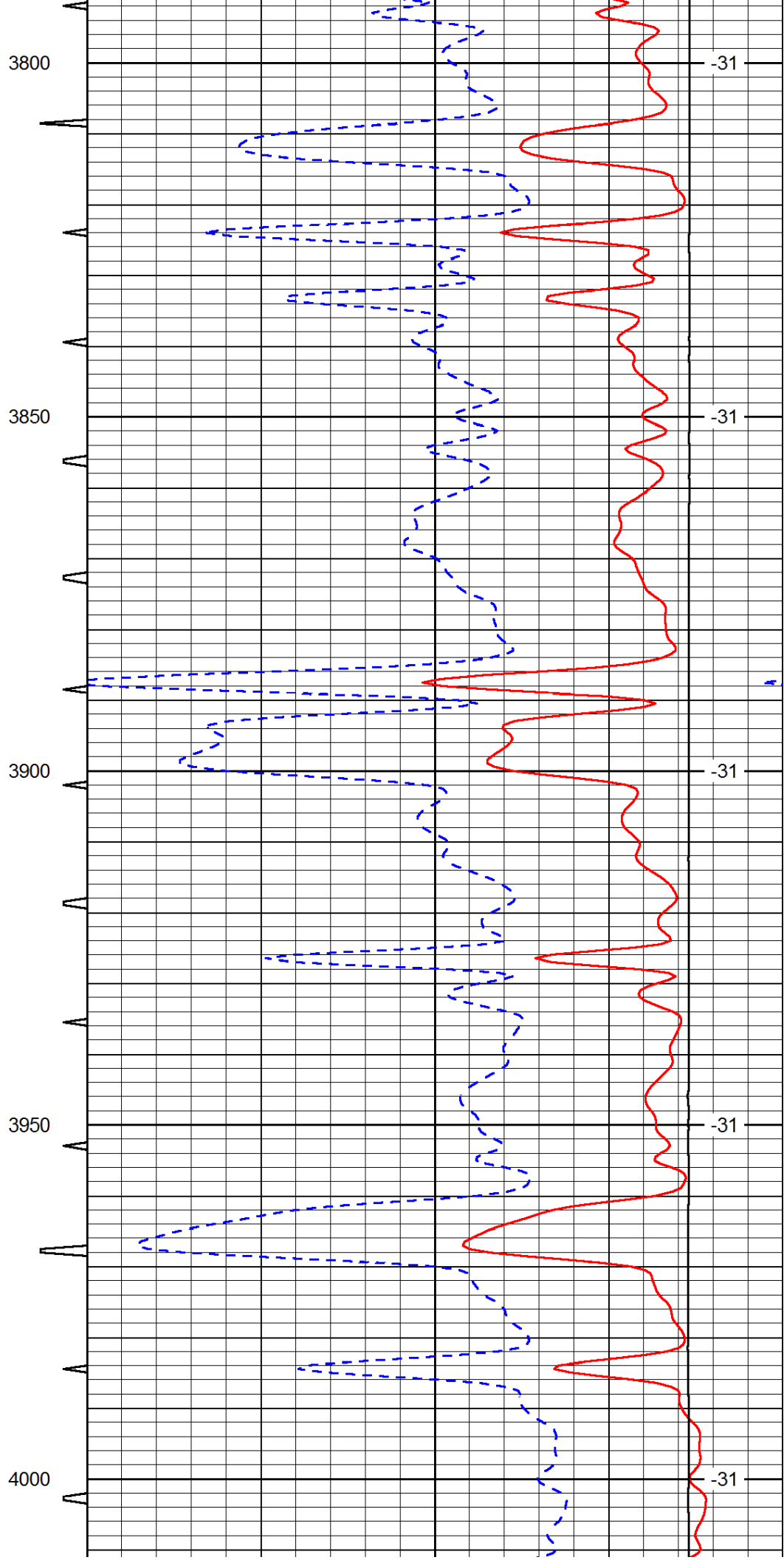
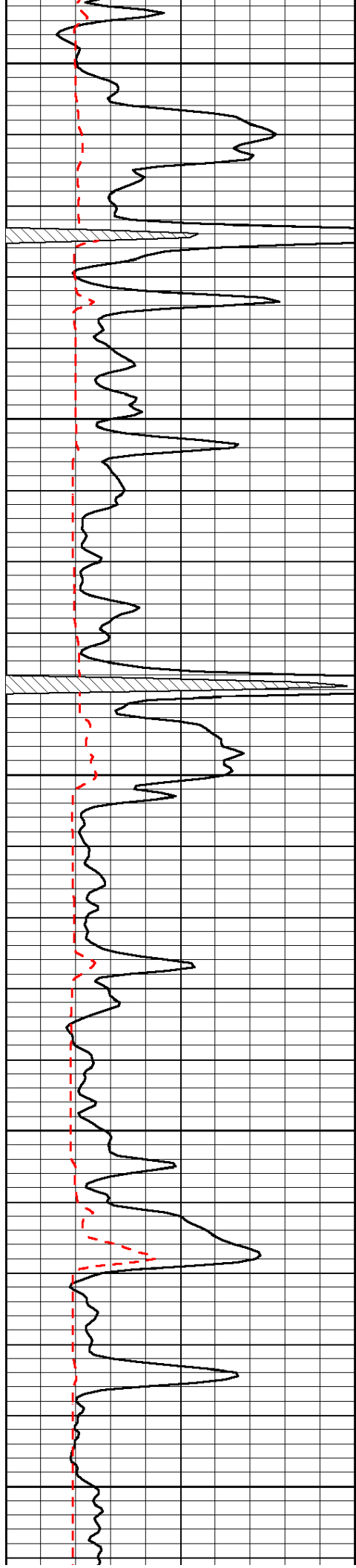


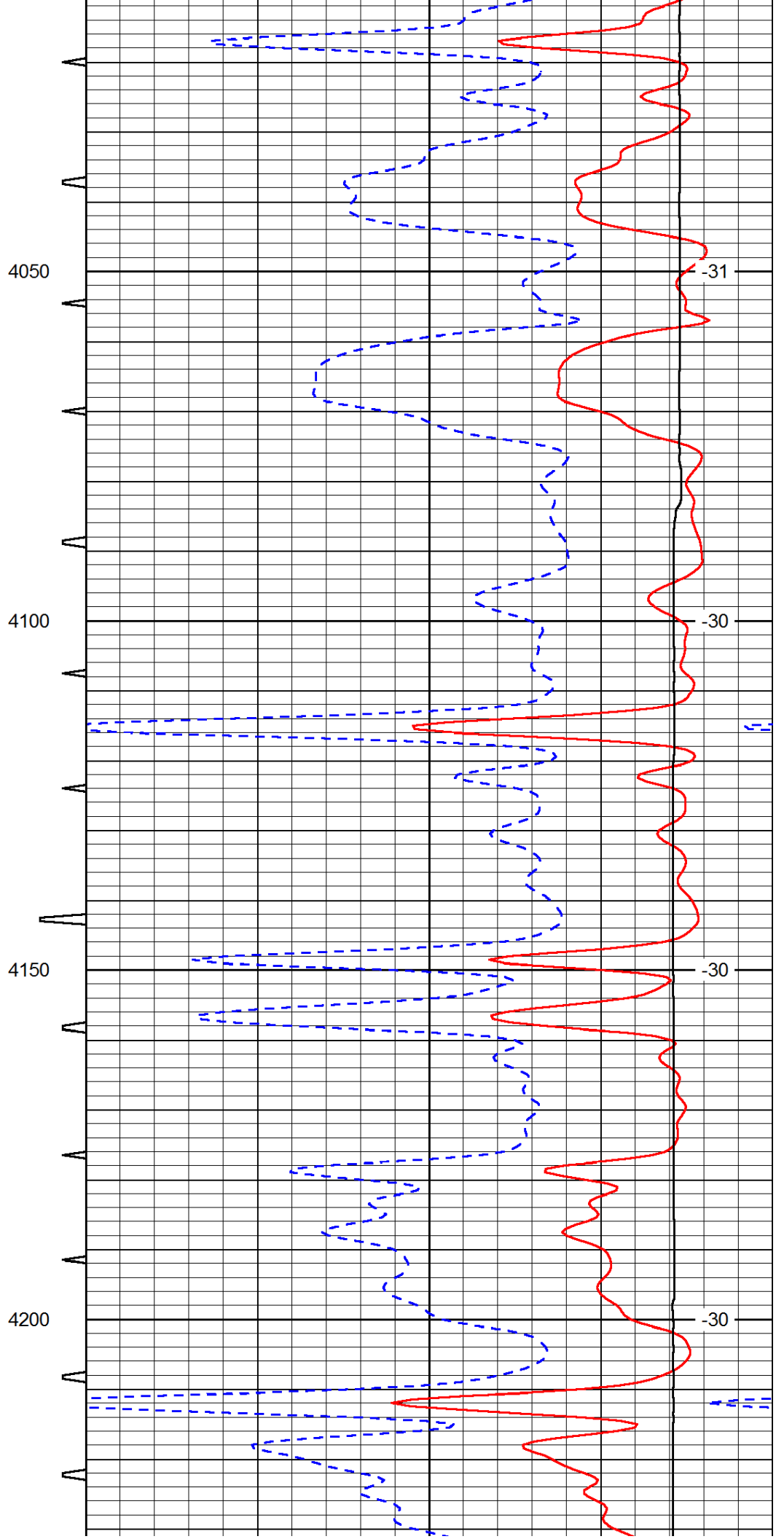
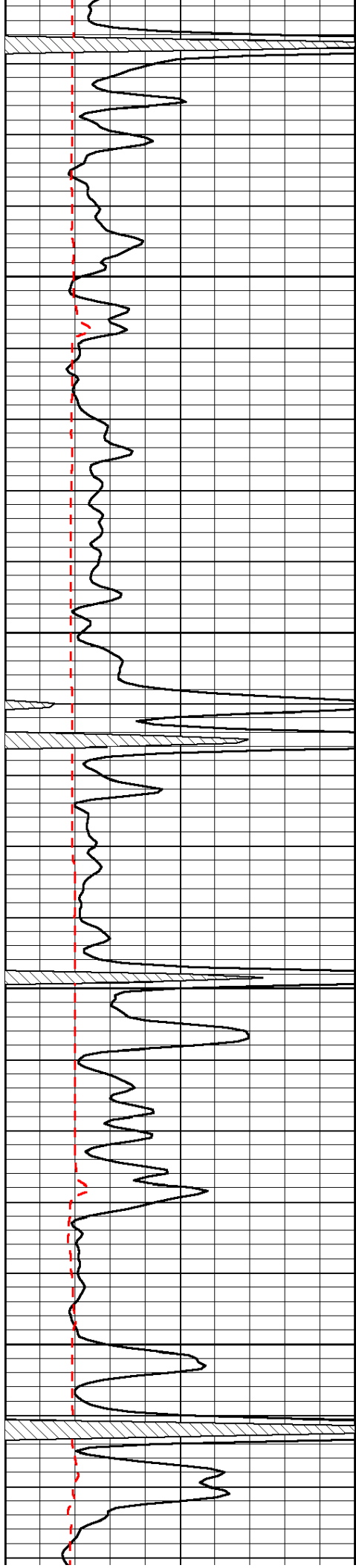


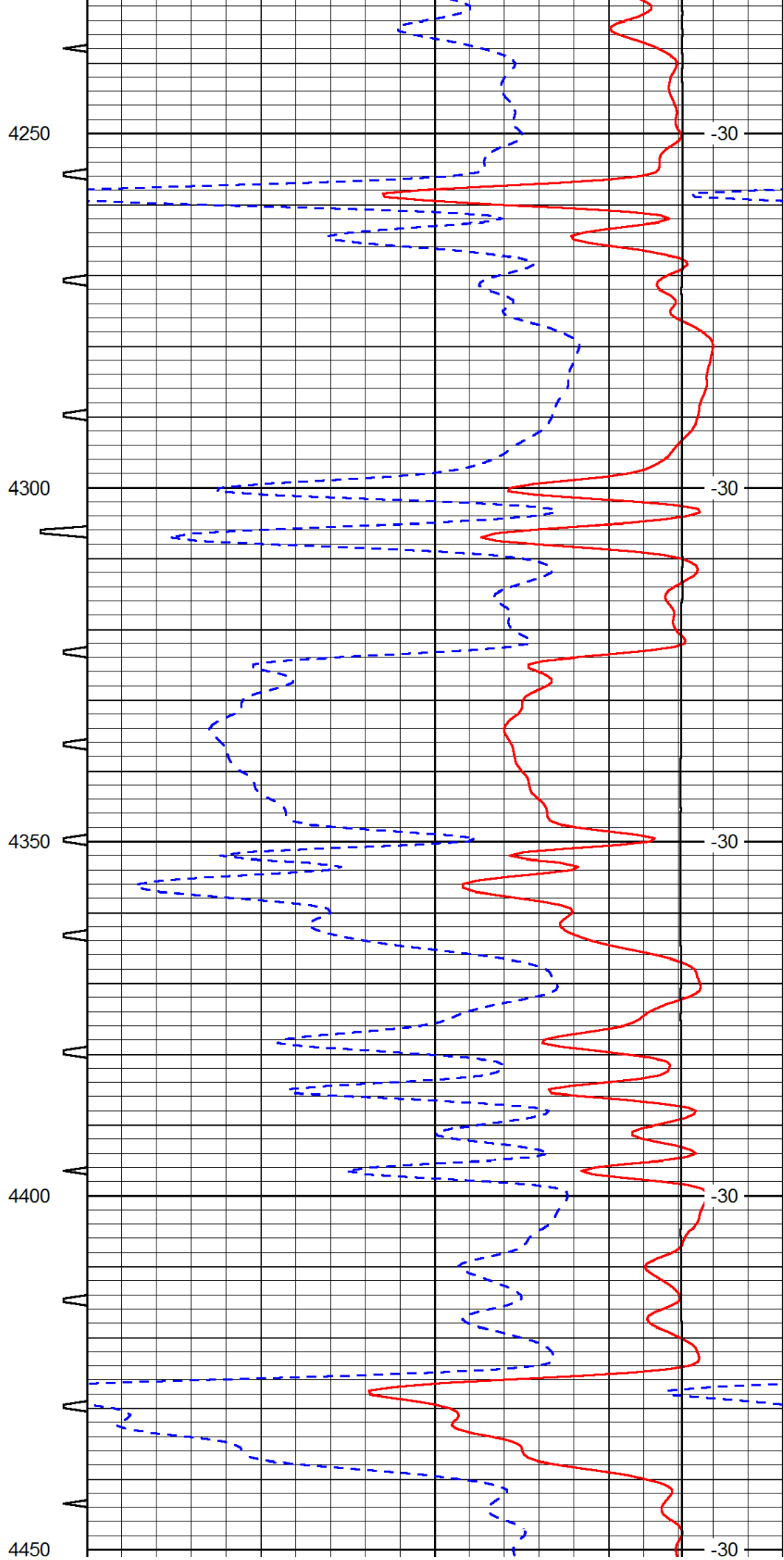
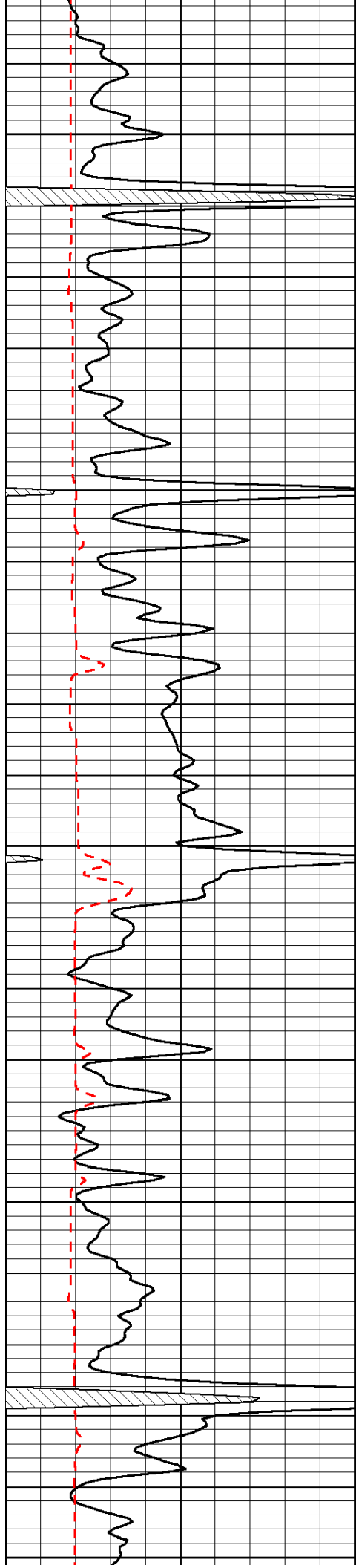


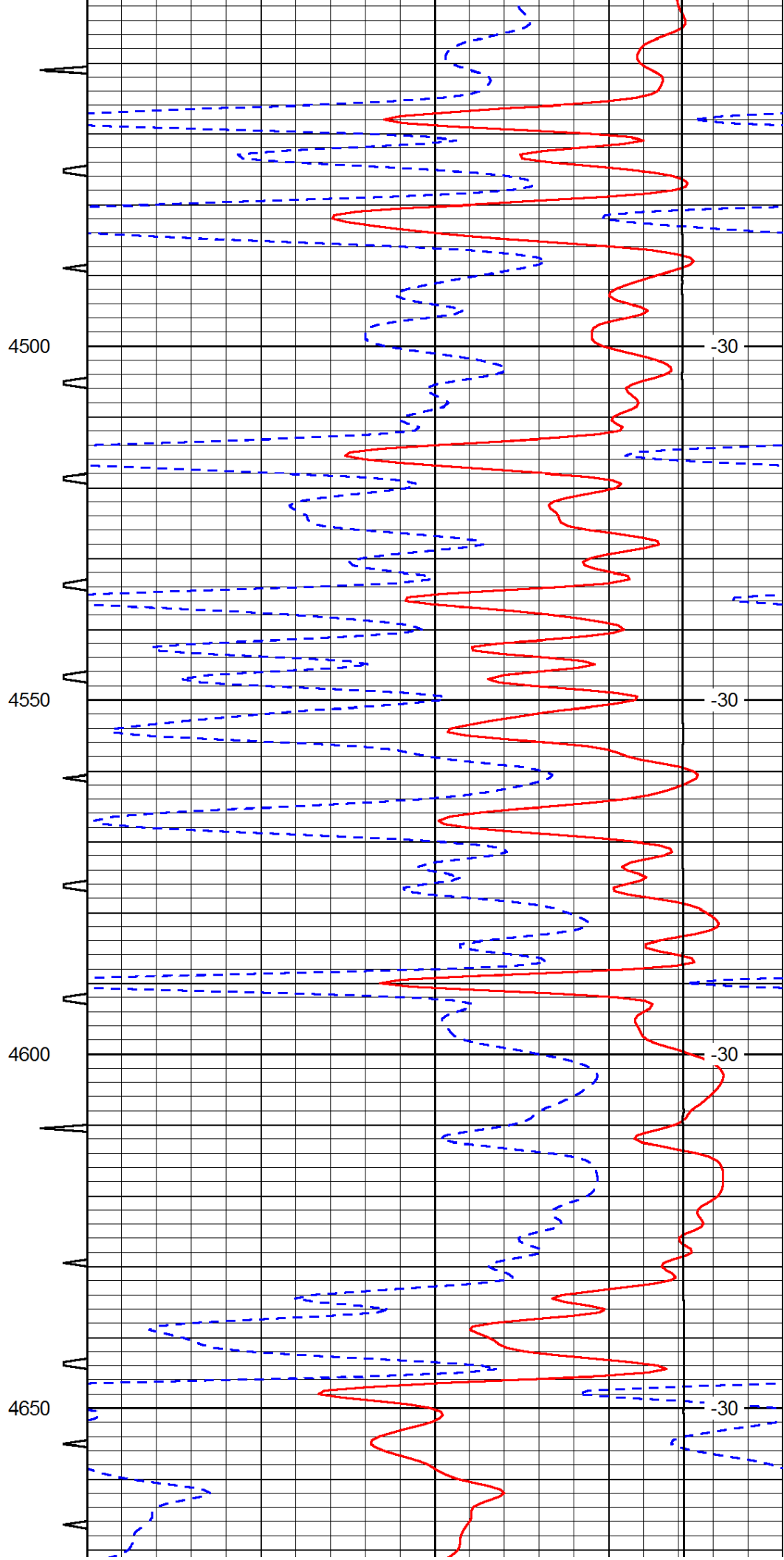
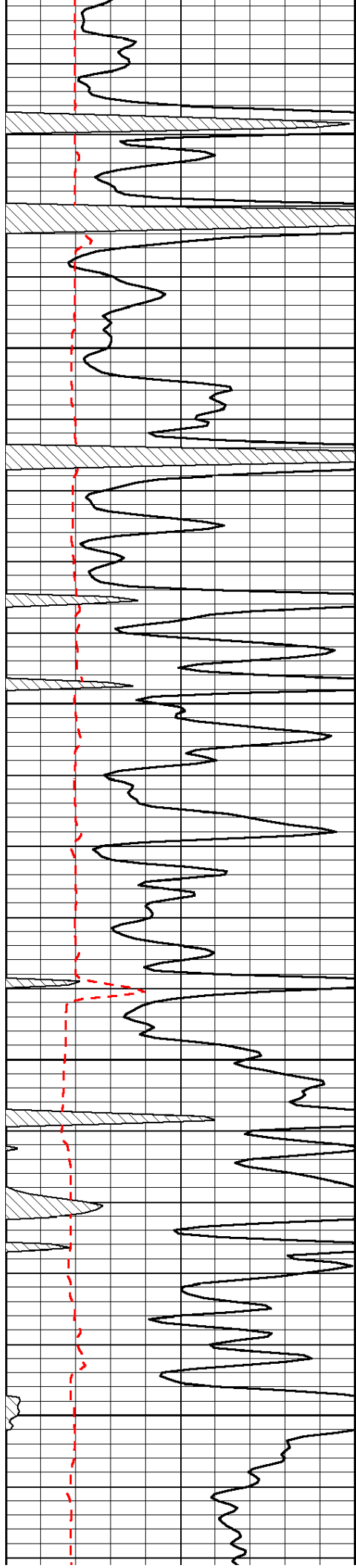


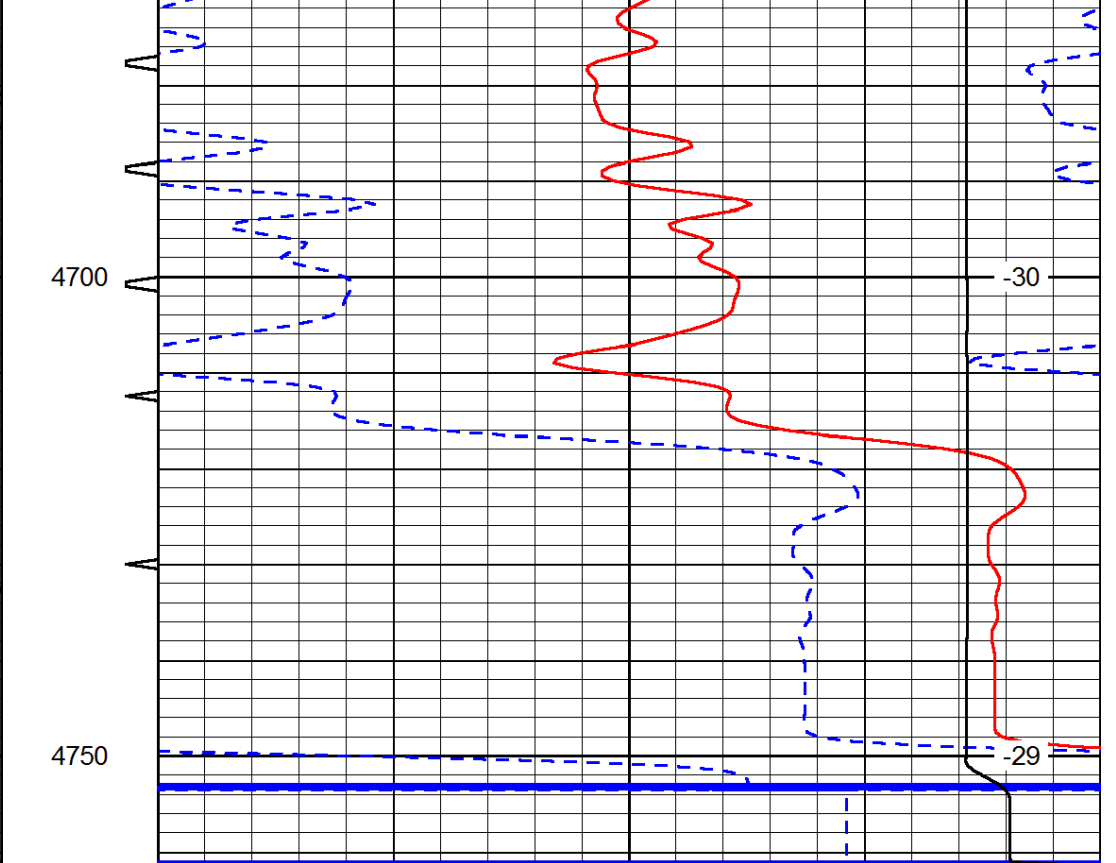
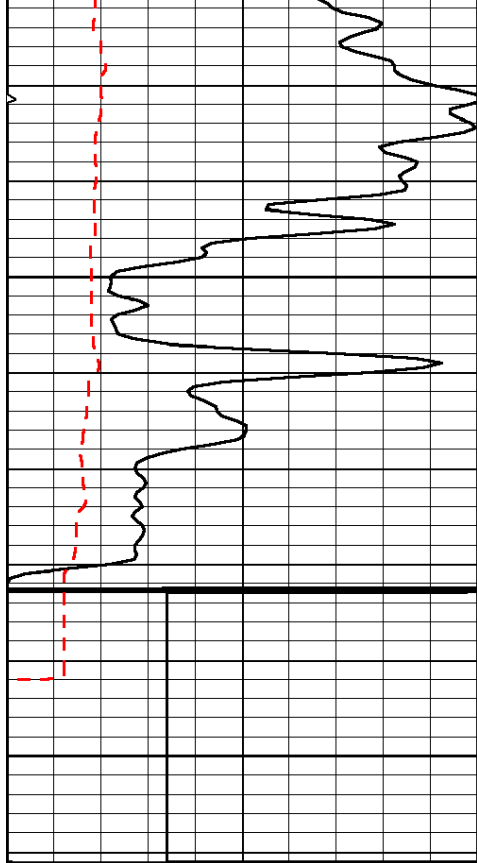












0	Gamma Ray	150	Sonic Int	140	Delta Time (usec/ft)	40
150	Gamma Ray	300	5	0	SPOR	-10
6	Caliper (GAPI)	16		15000	LTEN (lb)	0
						LSPD