



Pioneer Energy Services

# Microresistivity Log

15-109-21,249-00-00

API No.

Company **Russell Oil, Inc.**

Well **Edwards Trust 'B' #2-32**

Field **Wildcat**

County **Logan** State

**Kansas**

Location **760' FSL & 2110' FWL**

Sec: **32**

Twp: **15S**

Rge: **34W**

Other Services  
CNL/CDL  
DIL/BHCS

Elevation

K.B. 3056  
D.F. 3045  
G.L. 3045

Permanent Datum **Ground Level**

Elevation **3045**

Log Measured From **Kelly Bushing**

11 Ft. Above Perm. Datum

Drilling Measured From **Kelly Bushing**

Date **2/21/2014**

Run Number **Two**

Depth Driller **4750**

Depth Logger **4751**

Bottom Logged Interval **4750**

Top Log Interval **3600**

Casing Driller **8.625 @ 334**

Casing Logger **332**

Bit Size **7.875**

Type Fluid in Hole **Chemical**

Salinity, ppm CL **6500**

Density / Viscosity **9.3 54**

pH / Fluid Loss **10.0 8.8**

Source of Sample **Flowline**

Rm @ Meas. Temp **0.31 @ 54**

Rmf @ Meas. Temp **0.23 @ 54**

Rmc @ Meas. Temp **0.42 @ 54**

Source of Rmf / Rmc **Charts**

Rm @ BHT **0.14 @ 124**

Operating Rig Time **5 Hours**

Max Rec. Temp. F **124**

Equipment Number **15**

Location **Hays**

Recorded By **D.Kerr**

Witnessed By **Kitt Noah**

<<< Fold Here >>>

All interpretations are opinions based on inferences from electrical or other measurements and we cannot and do not guarantee the accuracy or correctness of any interpretation, and we shall not, except in the case of gross or willful negligence on our part, be liable or responsible for any loss, costs, damages, or expenses incurred or sustained by anyone resulting from any interpretation made by any of our officers, agents or employees. These interpretations are also subject to our general terms and conditions set out in our current Price Schedule.

### Comments

Thank you for using Pioneer Energy Services  
[www.pioneerenergy.com](http://www.pioneerenergy.com)  
 785 625 3858

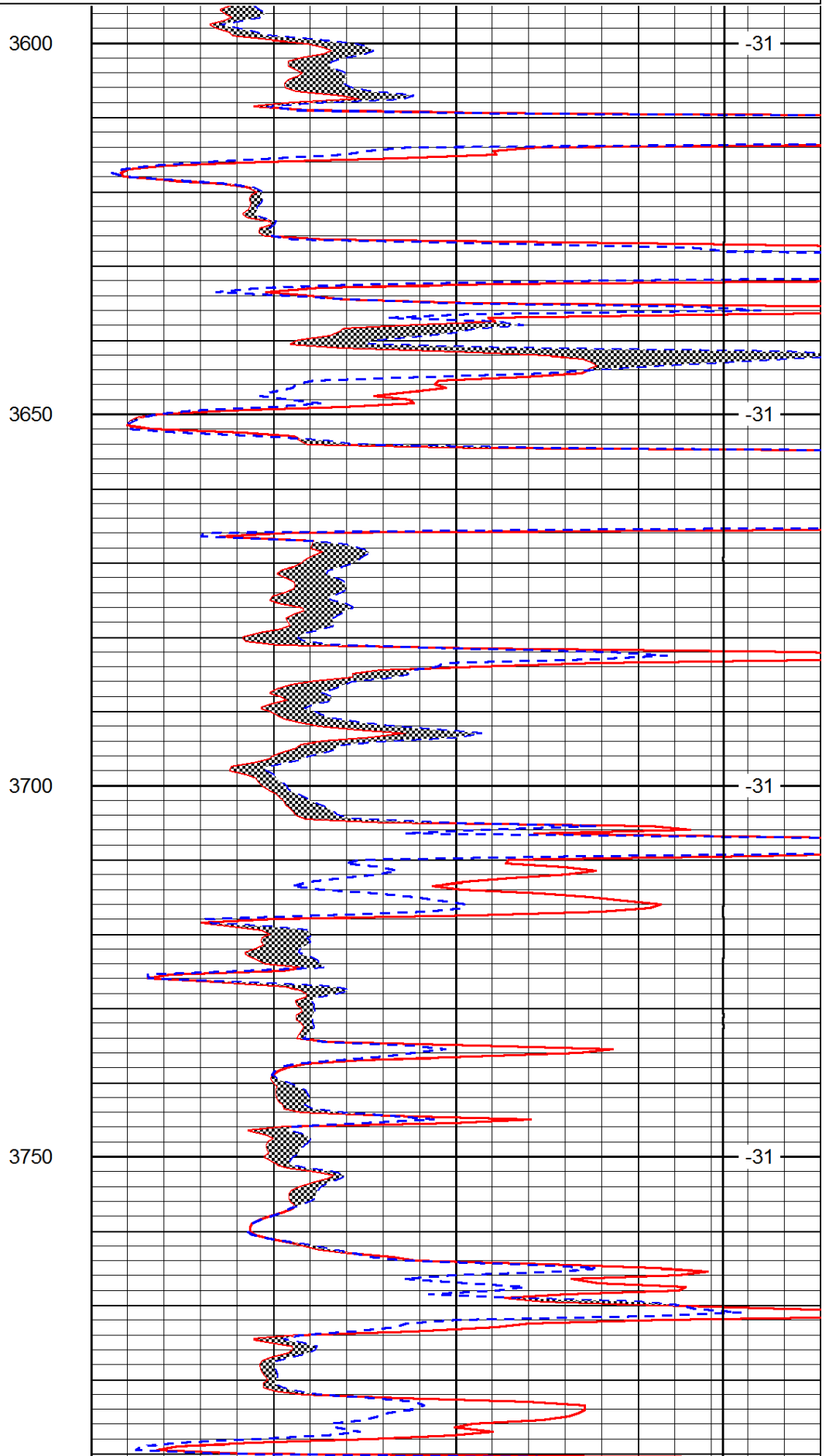
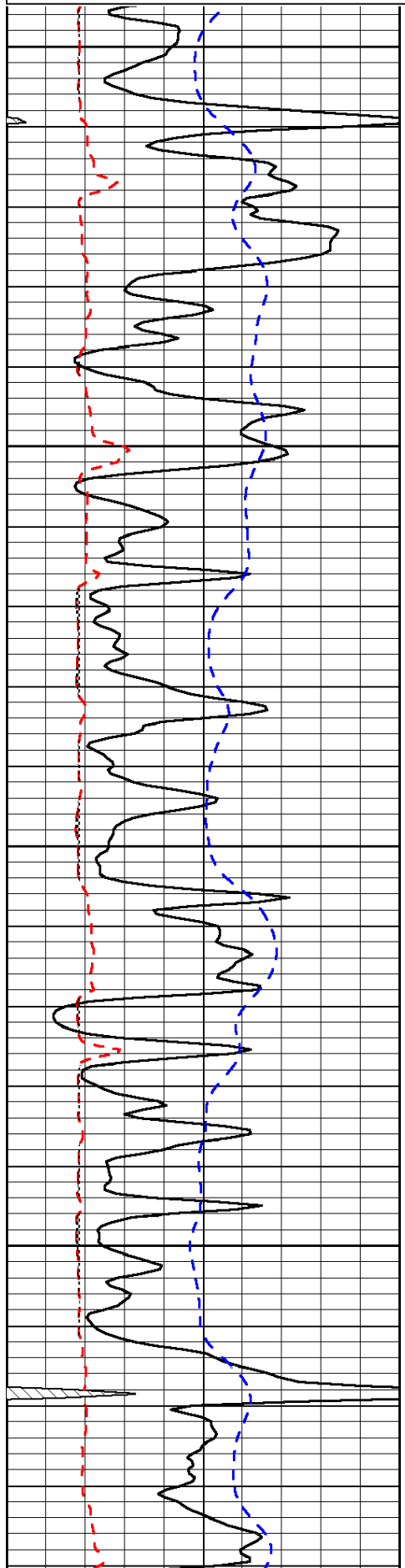
Pence KS, West to the Scott-Wichita County Line,  
 North to Logan County Line, North East Into at Cattle Guard

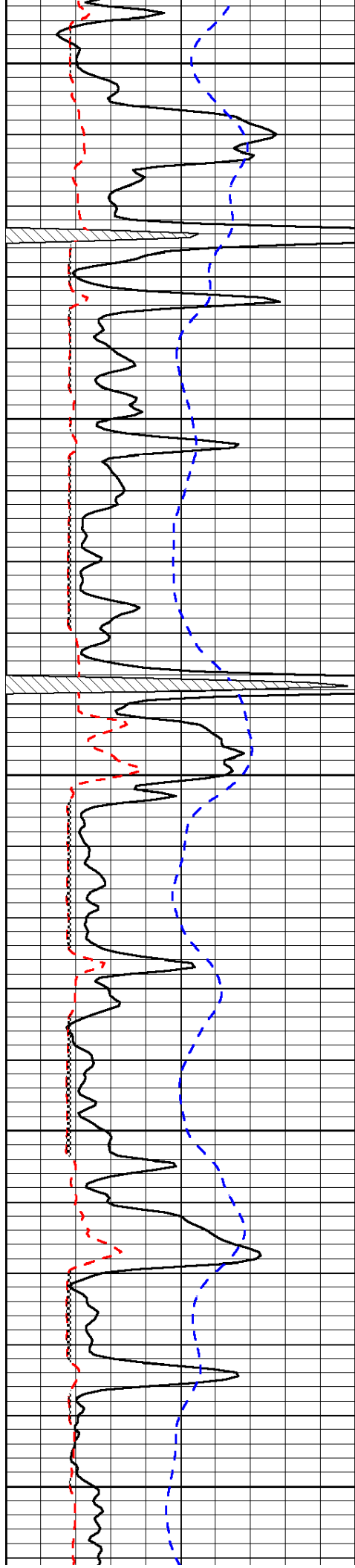
Database File: c:\warrior\data\russell\_edwards trust 'b' #2-32\russell\_edwards\_b\_2\_32hd.db  
 Dataset Pathname: DIL/russtk  
 Presentation Format: micro  
 Dataset Creation: Fri Feb 21 04:28:52 2014  
 Charted by: Depth in Feet scaled 1:240

0	Gamma Ray	150
6	Micro Log Caliper (GAPI)	16
-200	SP (mV)	0

0	Micro Inverse 1 X 1	40
0	Micro Normal 2"	40
15000	Line Weight	0

LSPD





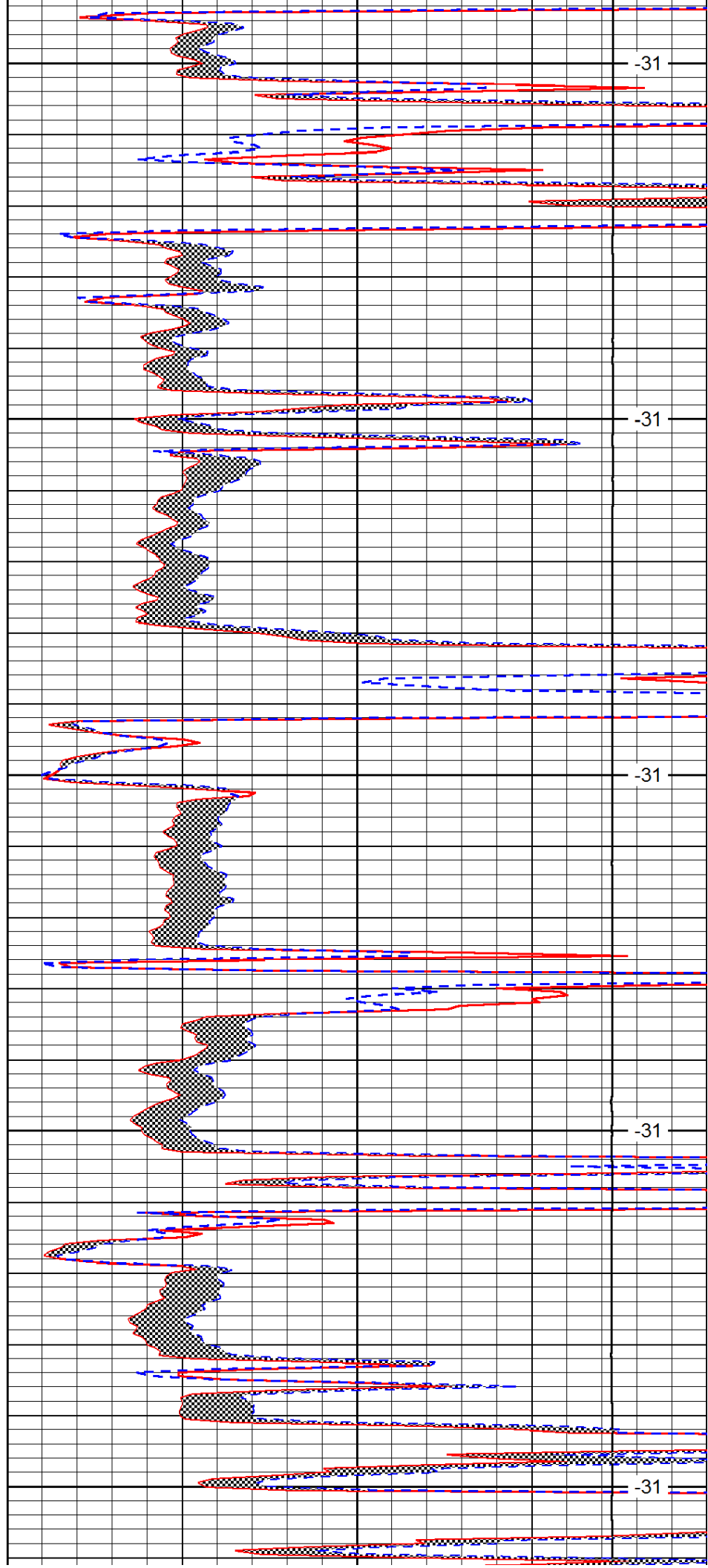
3800

3850

3900

3950

4000



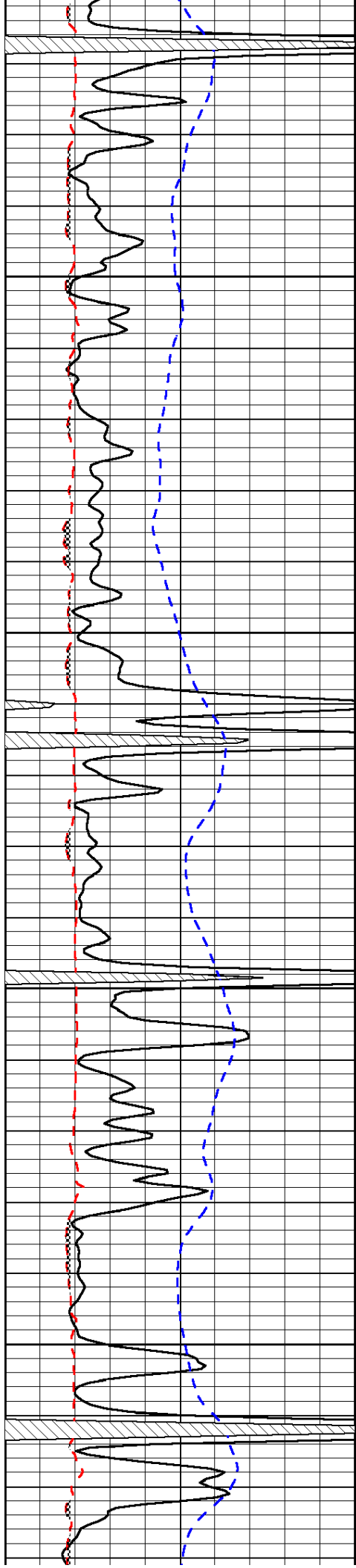
-31

-31

-31

-31

-31

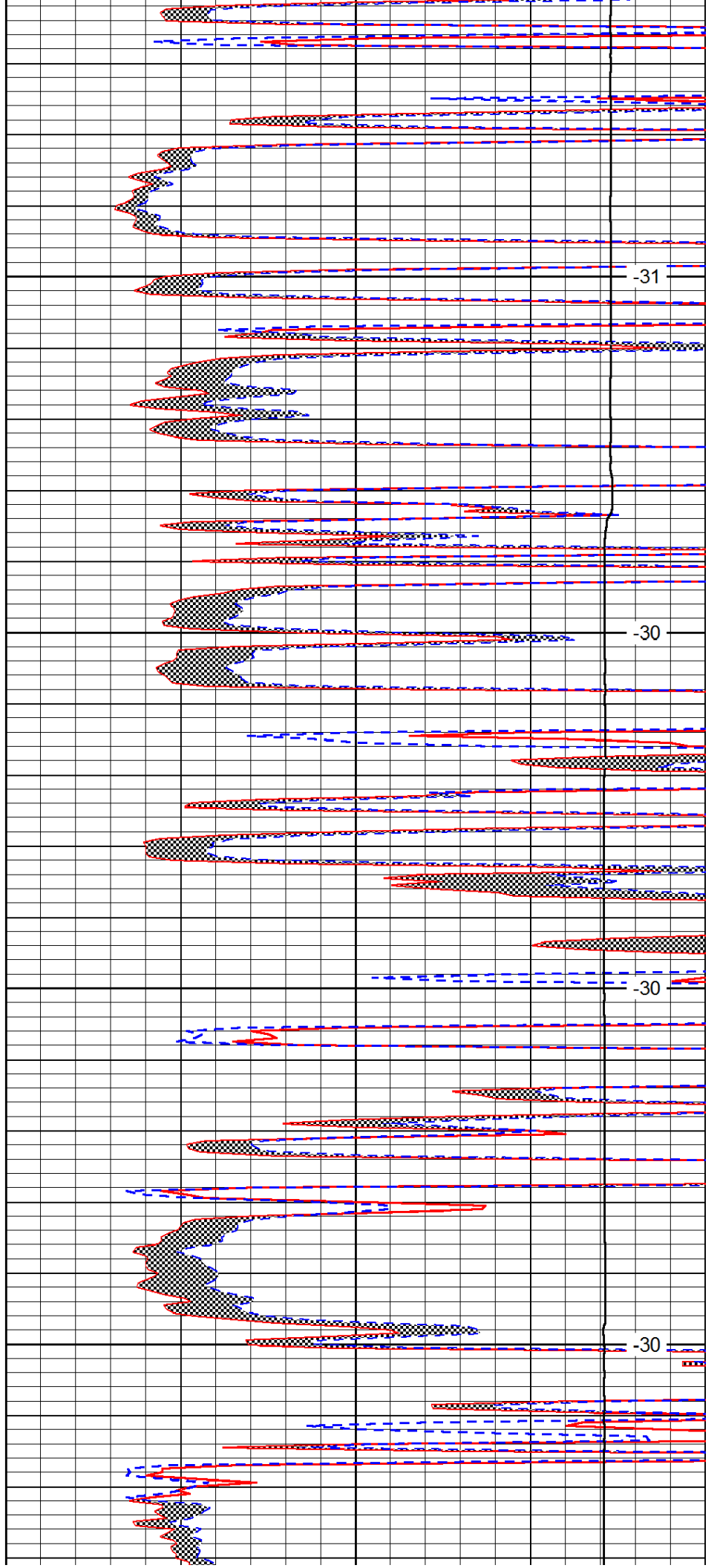


4050

4100

4150

4200

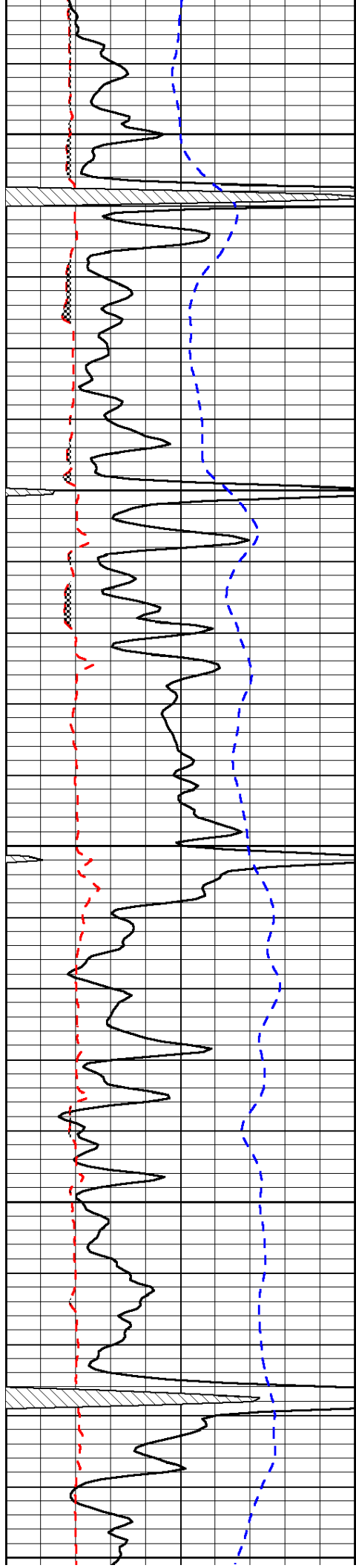


-31

-30

-30

-30



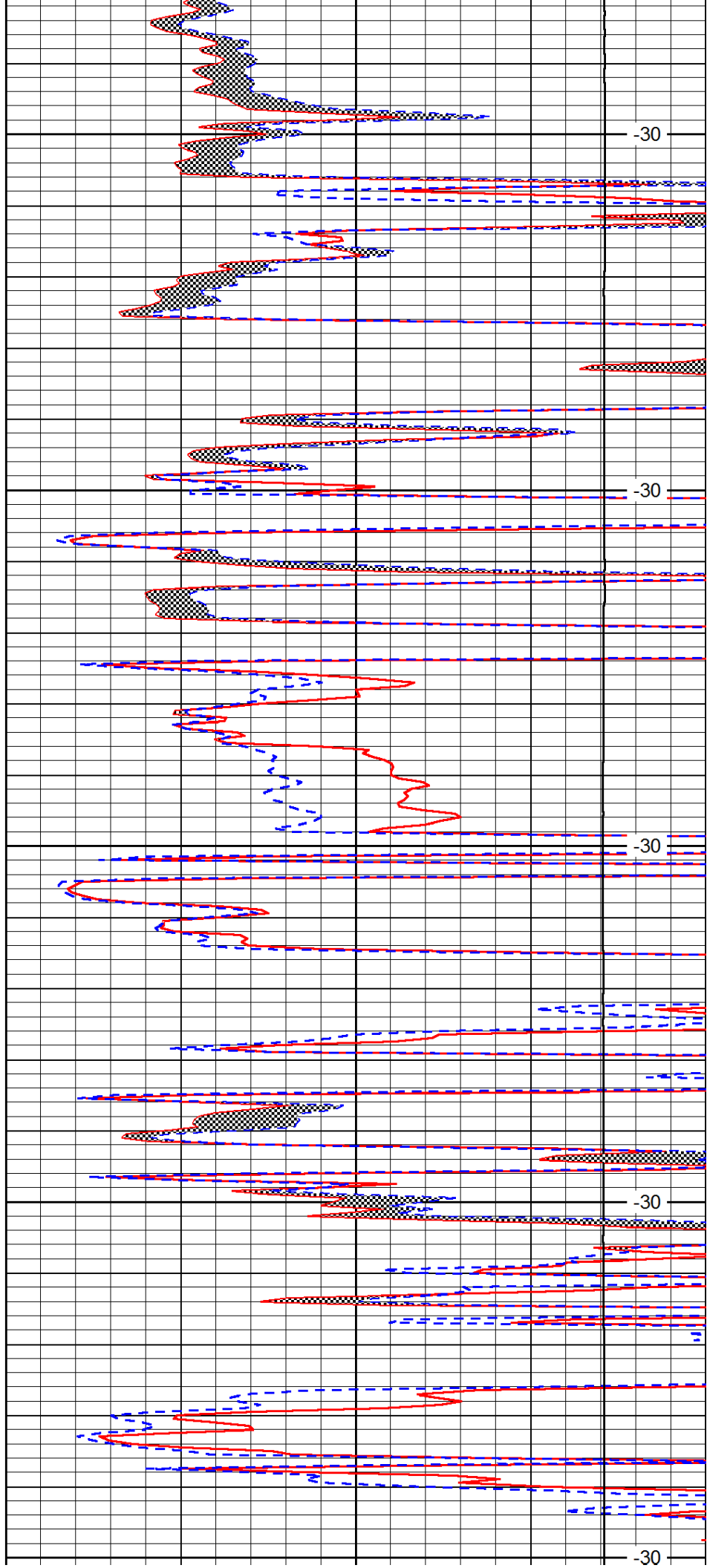
4250

4300

4350

4400

4450



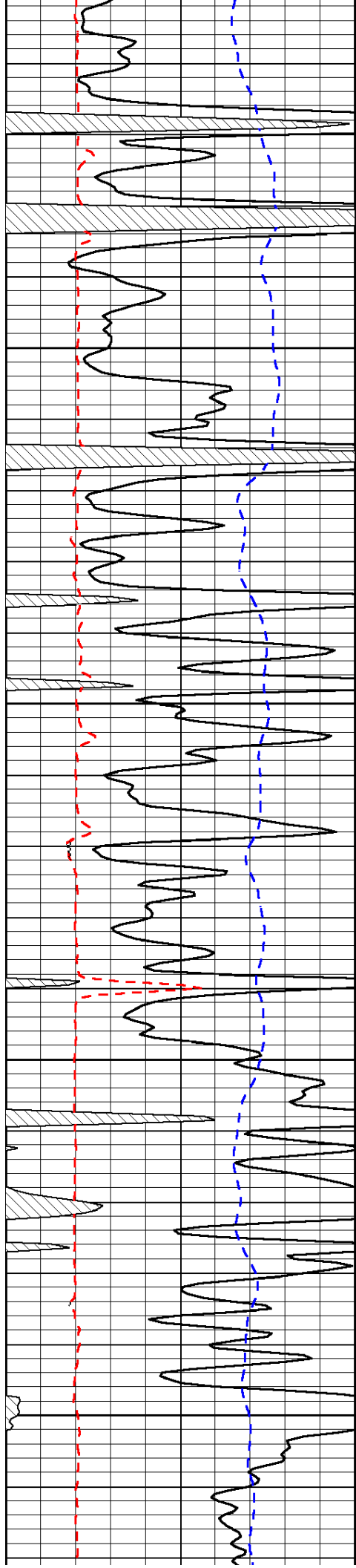
-30

-30

-30

-30

-30

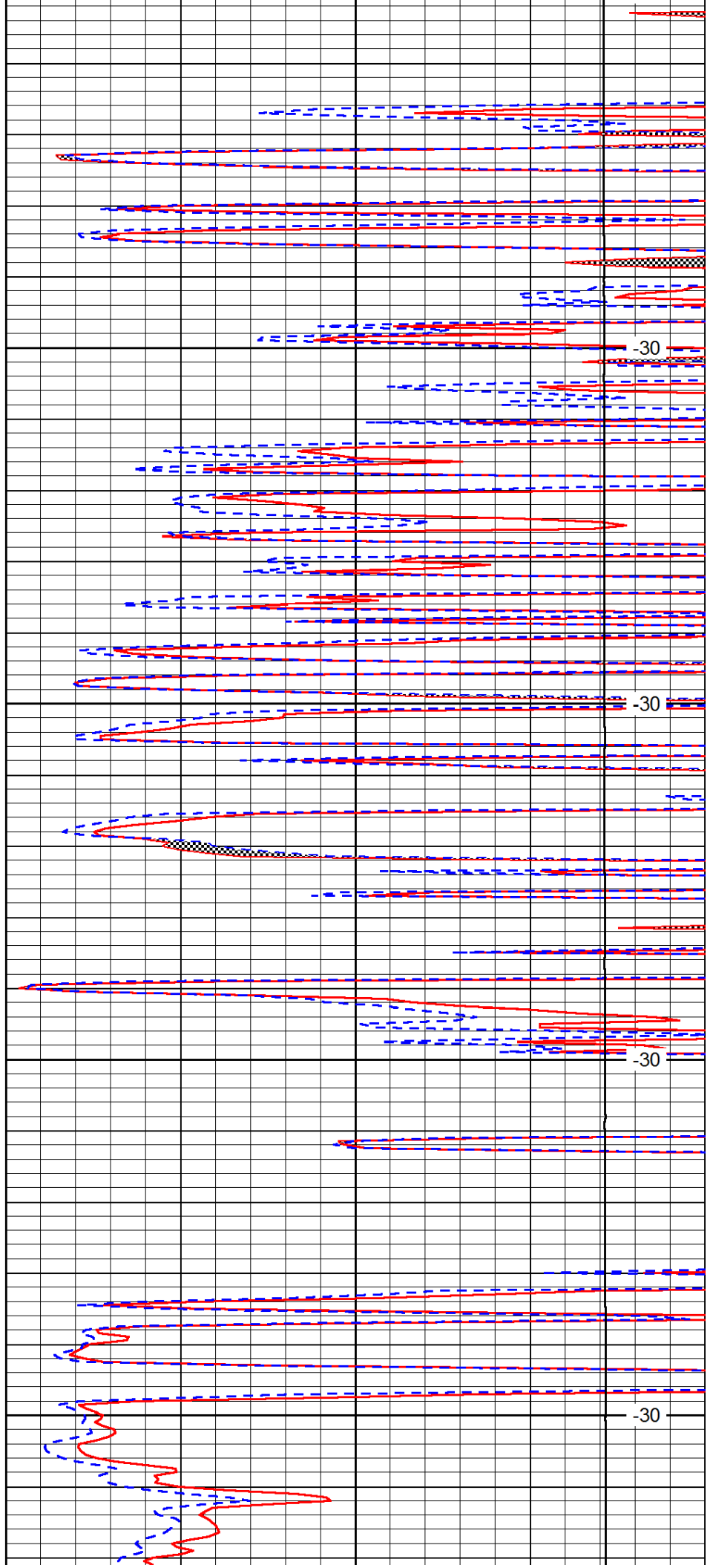


4500

4550

4600

4650

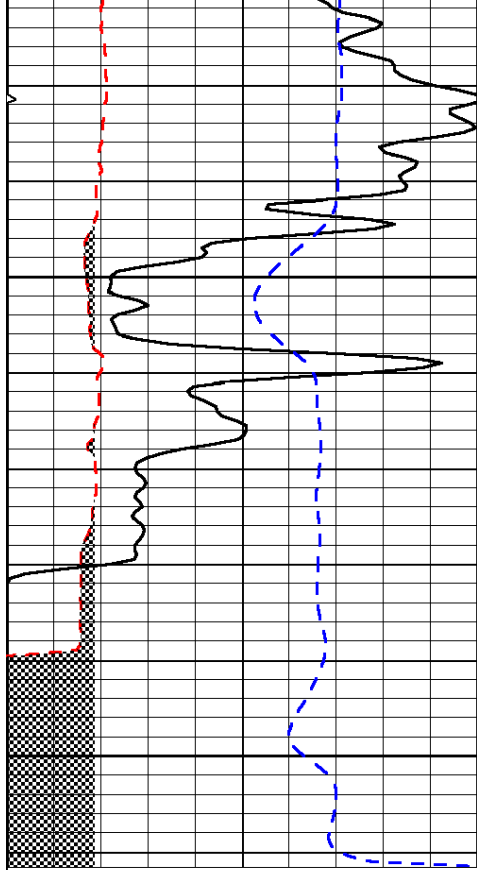


-30

-30

-30

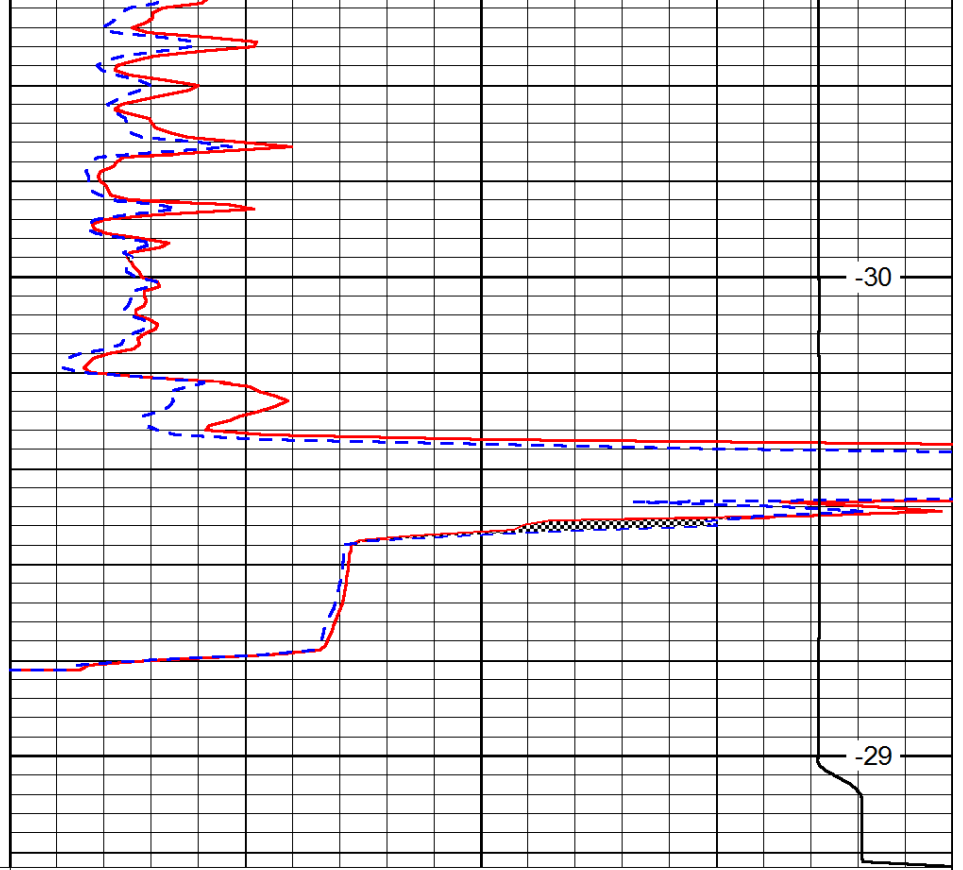
-30



0	Gamma Ray	150
6	Micro Log Caliper (GAPI)	16
-200	SP (mV)	0

4700

4750



0	Micro Inverse 1 X 1	40
0	Micro Normal 2"	40
15000	Line Weight	0

-30

-29

LSPD