



Pioneer Energy Services

Dual Induction Log

15-109-21,249-00-00

API No.

Company **Russell Oil, Inc.**

Well **Edwards Trust 'B' #2-32**

Field **Wildcat**

County **Logan** State

Kansas

Location **760' FSL & 2110' FWL**

Sec: **32** Twp: **15S** Rge: **34W**

Other Services
CNL/CDL
MEL/BHCS

Permanent Datum **Ground Level** Elevation **3045**

Log Measured From **Kelly Bushing** 11 Ft. Above Perm. Datum

Drilling Measured From **Kelly Bushing**

Elevation
K.B. 3056
D.F. 3045
G.L. 3045

Date	2/21/2014	
Run Number	One	
Depth Driller	4750	
Depth Logger	4751	
Bottom Logged Interval	4750	
Top Log Interval	300	
Casing Driller	8.625 @ 334	
Casing Logger	332	
Bit Size	7.875	
Type Fluid in Hole	Chemical	
Salinity, ppm CL	6500	
Density / Viscosity	9.3 54	
pH / Fluid Loss	10.0 8.8	
Source of Sample	Flowline	
Rm @ Meas. Temp	0.31 @ 54	
Rmf @ Meas. Temp	0.23 @ 54	
Rmc @ Meas. Temp	0.42 @ 54	
Source of Rmf / Rmc	Charts	
Rm @ BHT	0.14 @ 124	
Operating Rig Time	5 Hours	
Max Rec. Temp. F	124	
Equipment Number	15	
Location	Hays	
Recorded By	D.Kerr	
Witnessed By	Kitt Noah	

<<< Fold Here >>>

All interpretations are opinions based on inferences from electrical or other measurements and we cannot and do not guarantee the accuracy or correctness of any interpretation, and we shall not, except in the case of gross or willful negligence on our part, be liable or responsible for any loss, costs, damages, or expenses incurred or sustained by anyone resulting from any interpretation made by any of our officers, agents or employees. These interpretations are also subject to our general terms and conditions set out in our current Price Schedule.

Comments

Thank you for using Pioneer Energy Services
www.pioneerenergy.com
 785 625 3858

Pence KS, West to the Scott-Wichita County Line,
 North to Logan County Line, North East Into at Cattle Guard

Database File: c:\warrior\data\russell_edwards trust 'b' #2-32\russell_edwards_b_2_32hd.db
 Dataset Pathname: DIL\russtk
 Presentation Format: dil2in
 Dataset Creation: Fri Feb 21 04:28:52 2014
 Charted by: Depth in Feet scaled 1:600

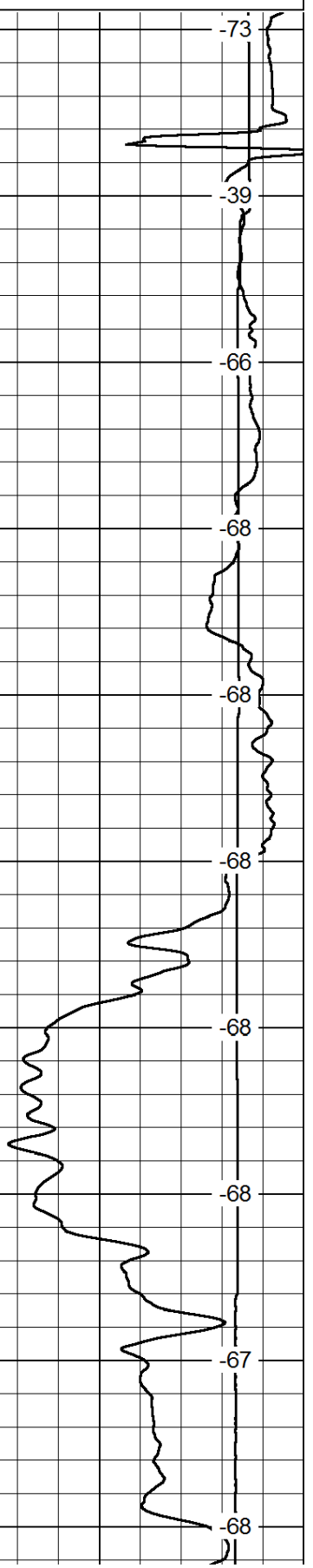
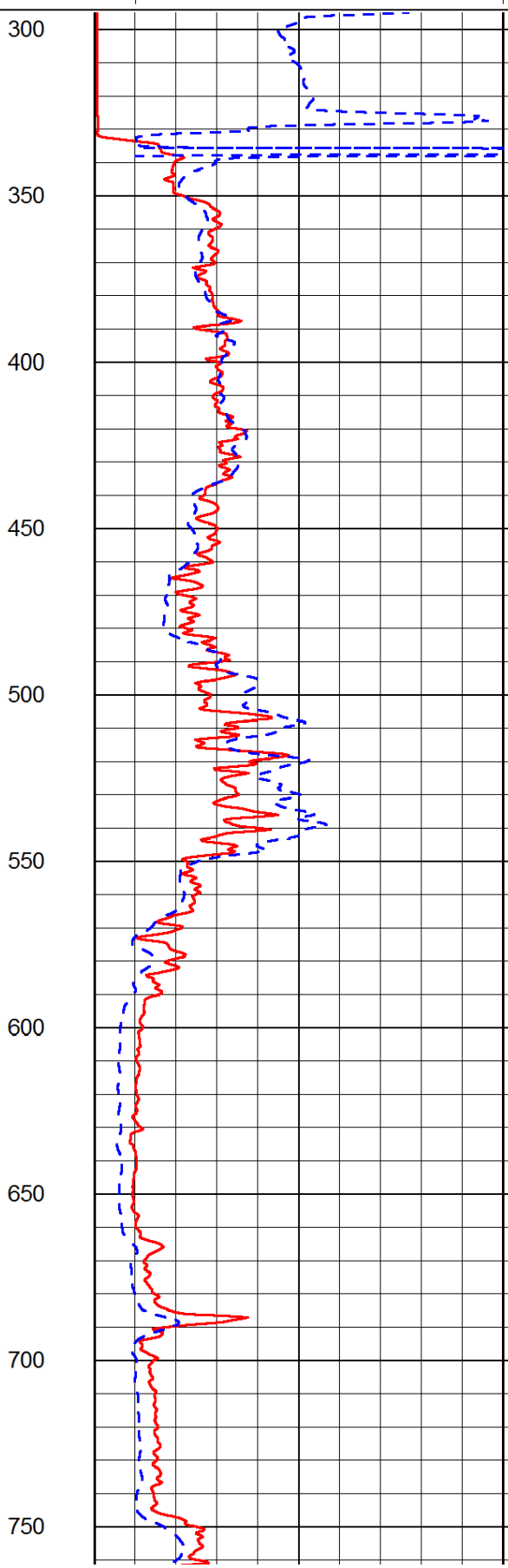
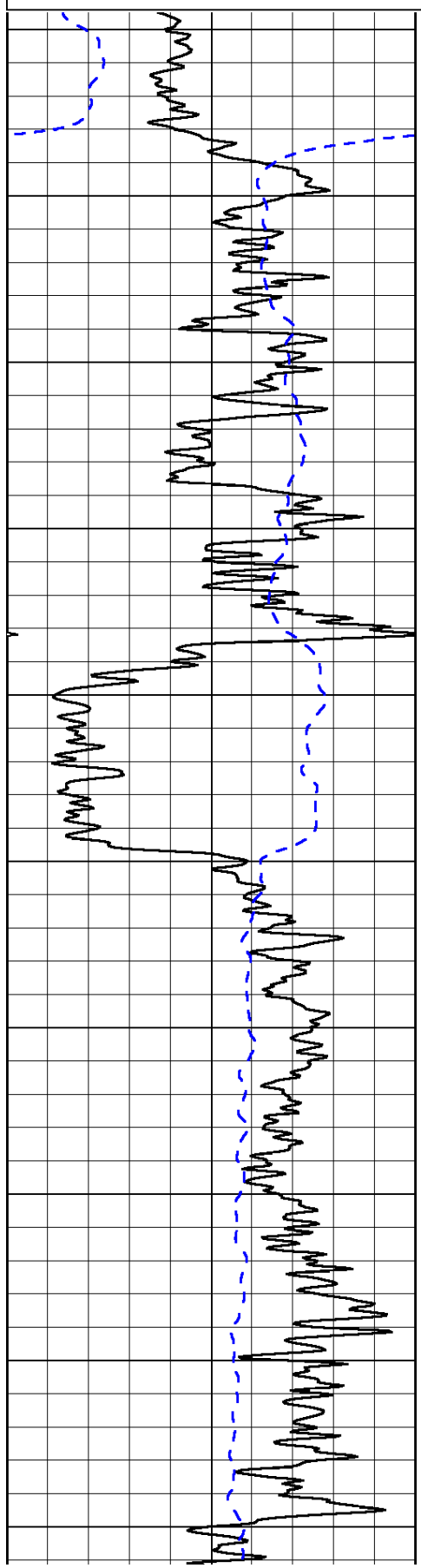
0	Gamma Ray	150
-200	SP (mV)	0

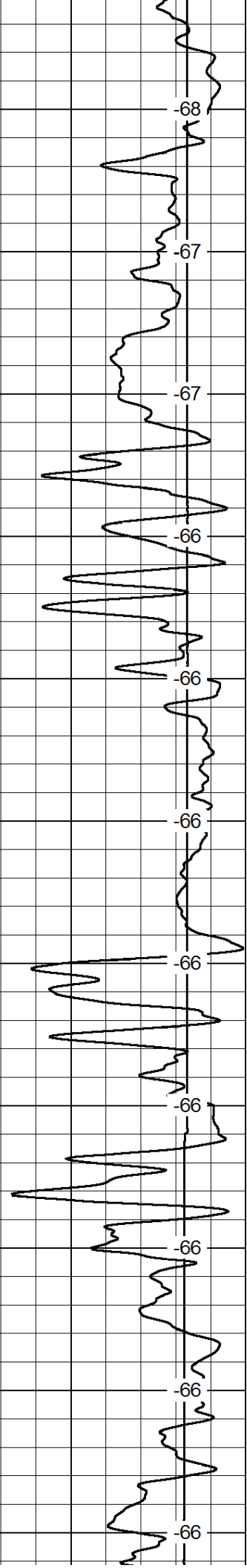
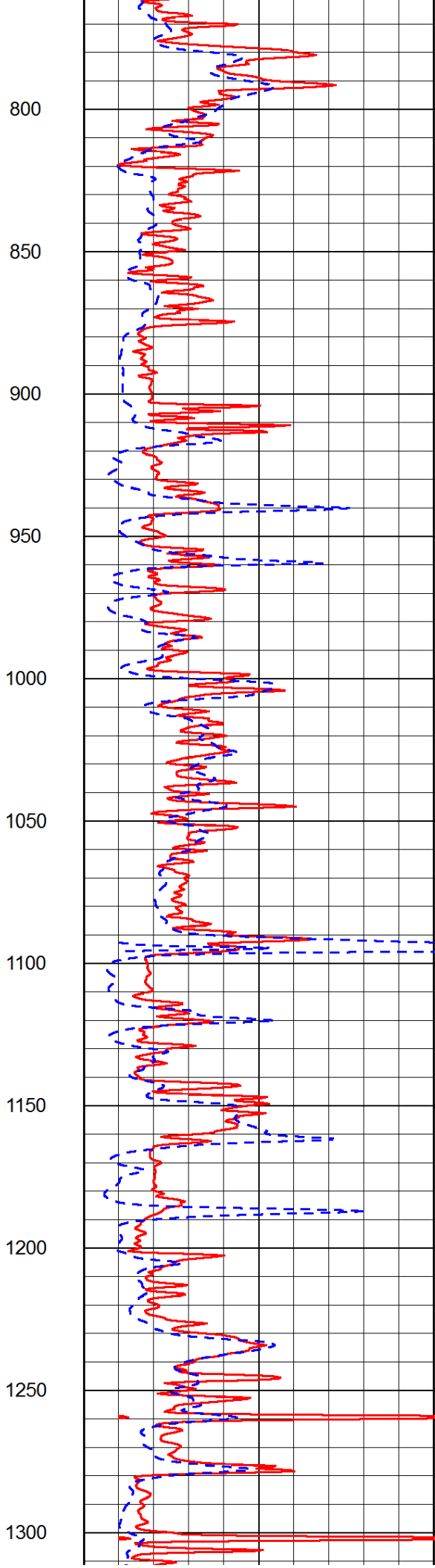
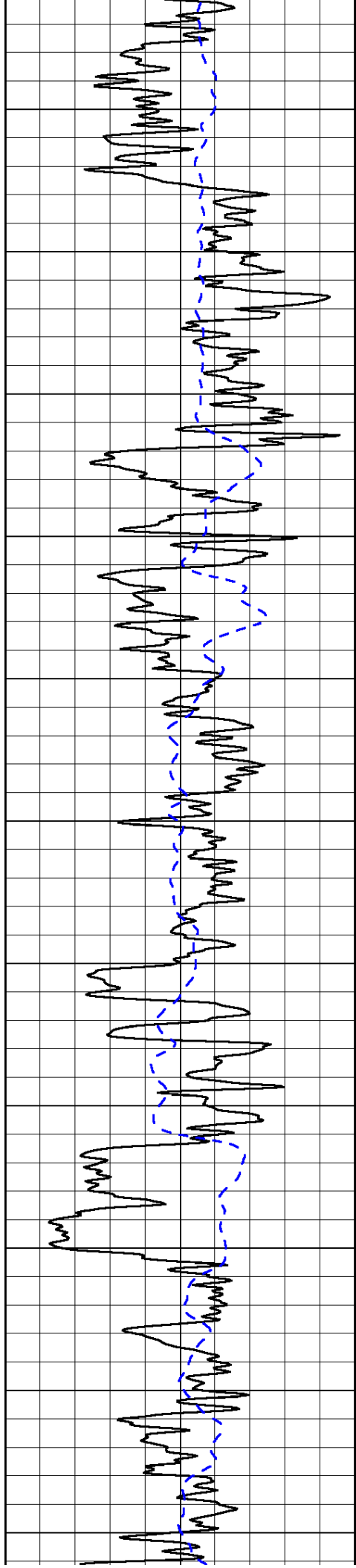
0	Shallow Resistivity	50
0	Deep Resistivity	50

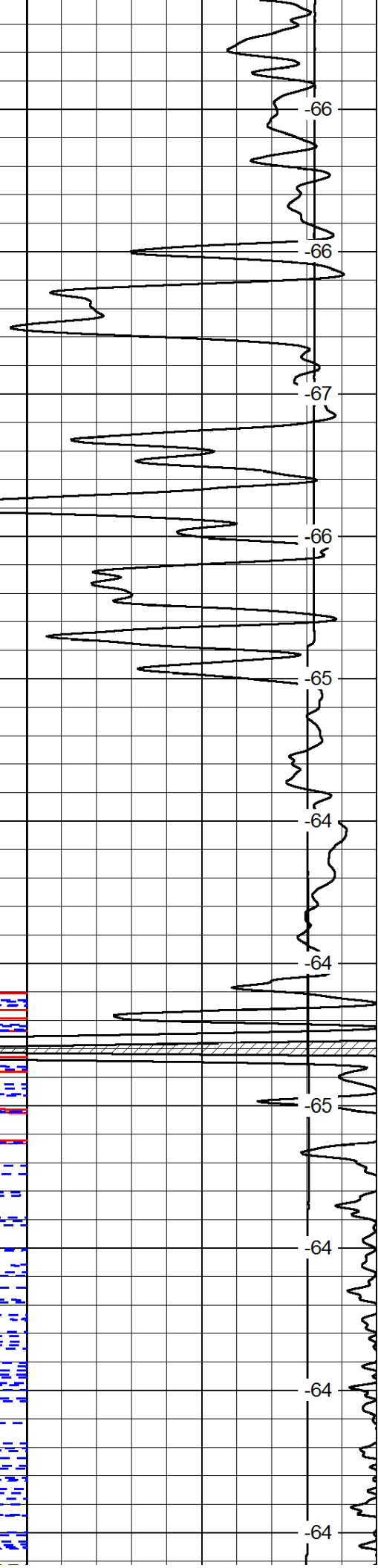
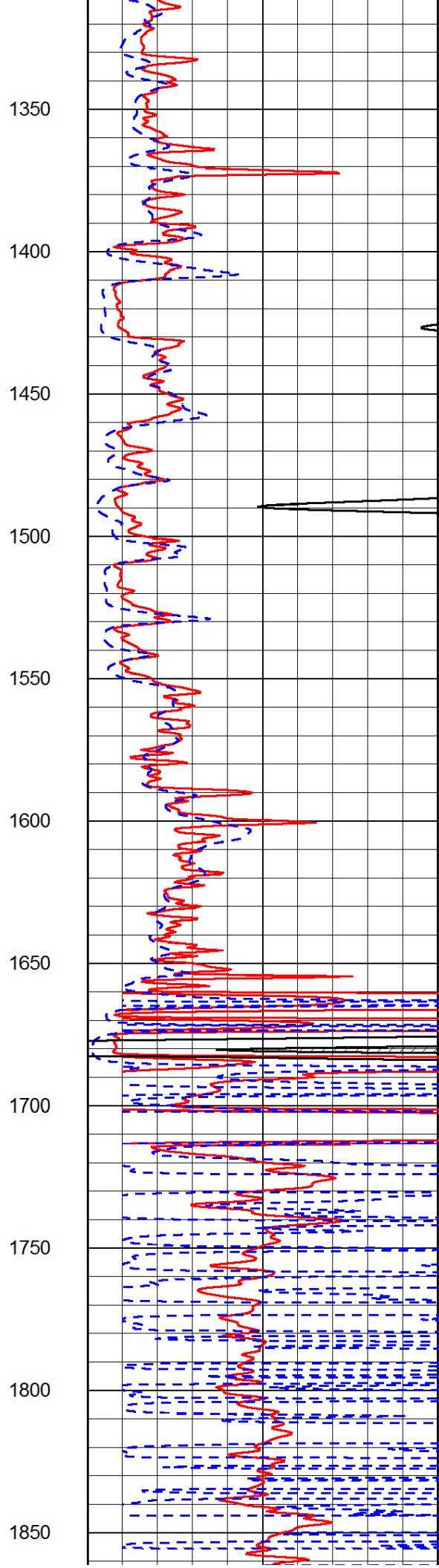
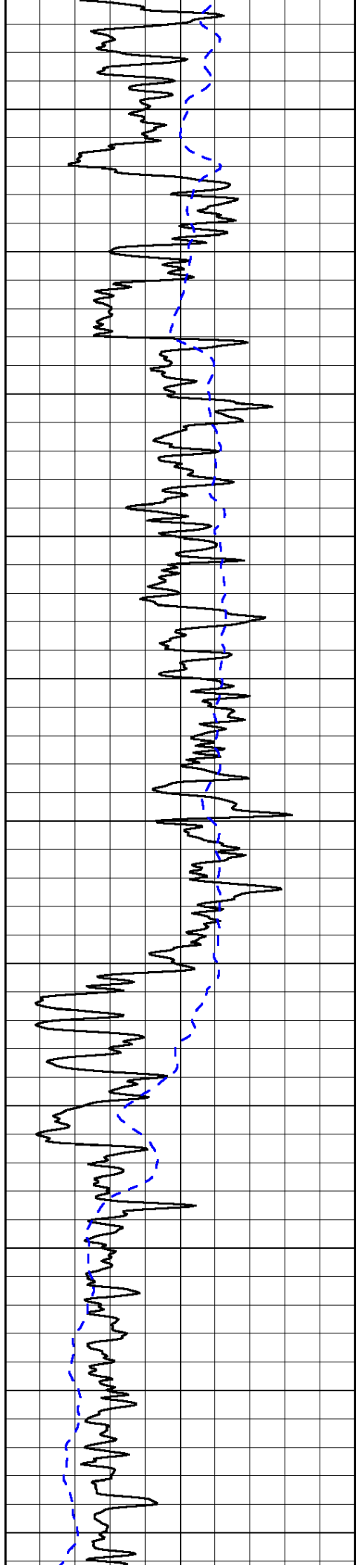
LSPD

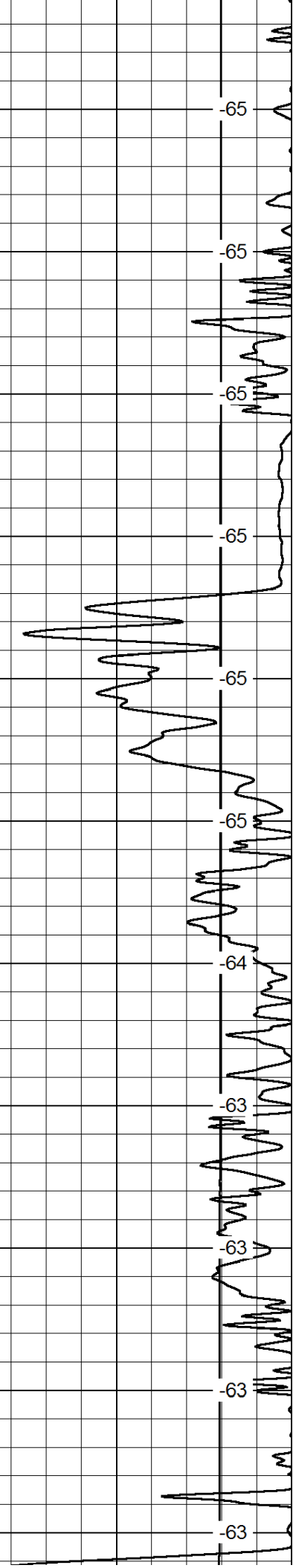
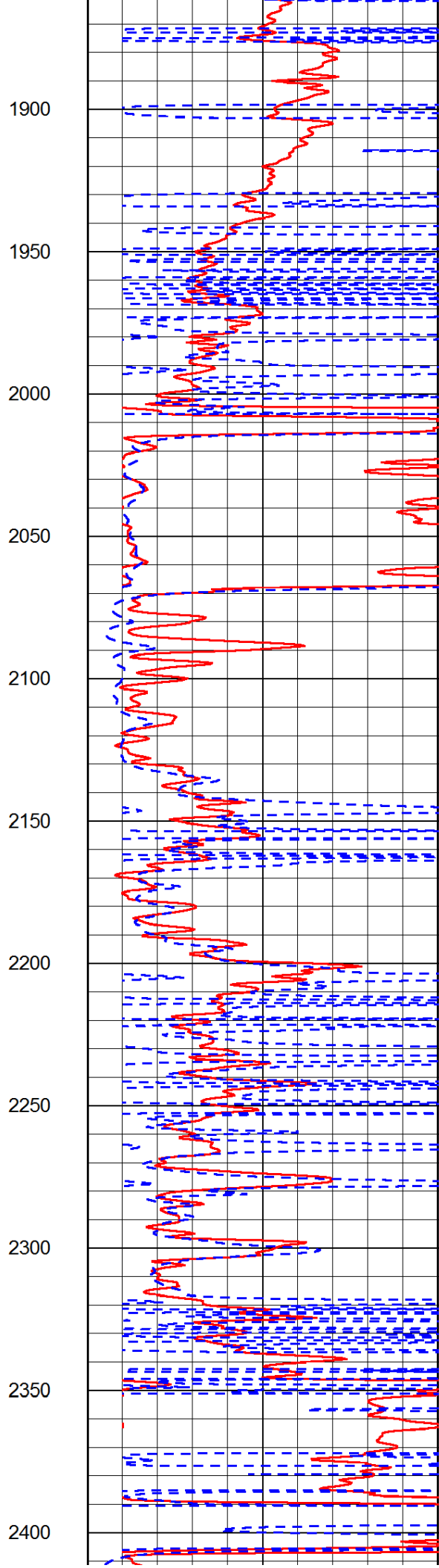
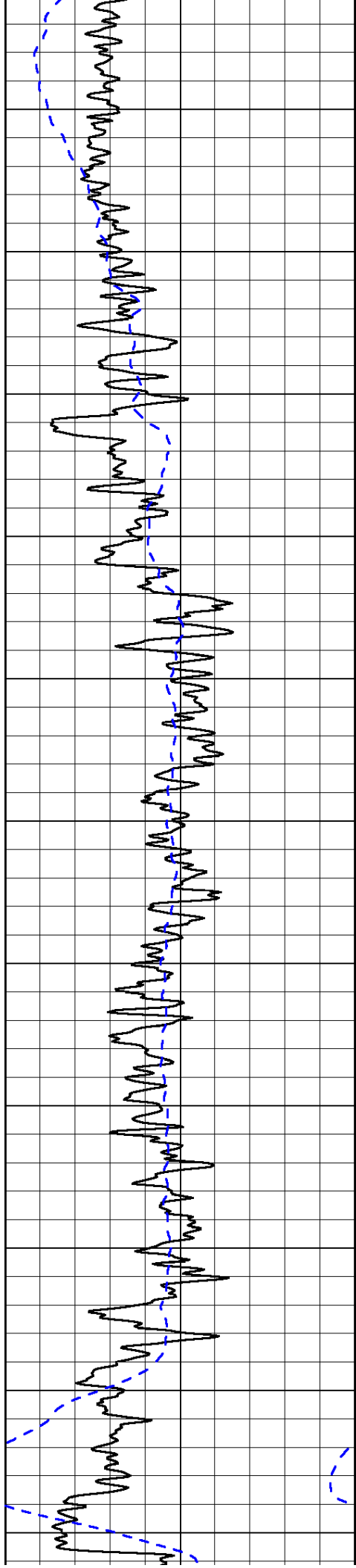
1000	Conductivity	0
15000	Line Tension	0

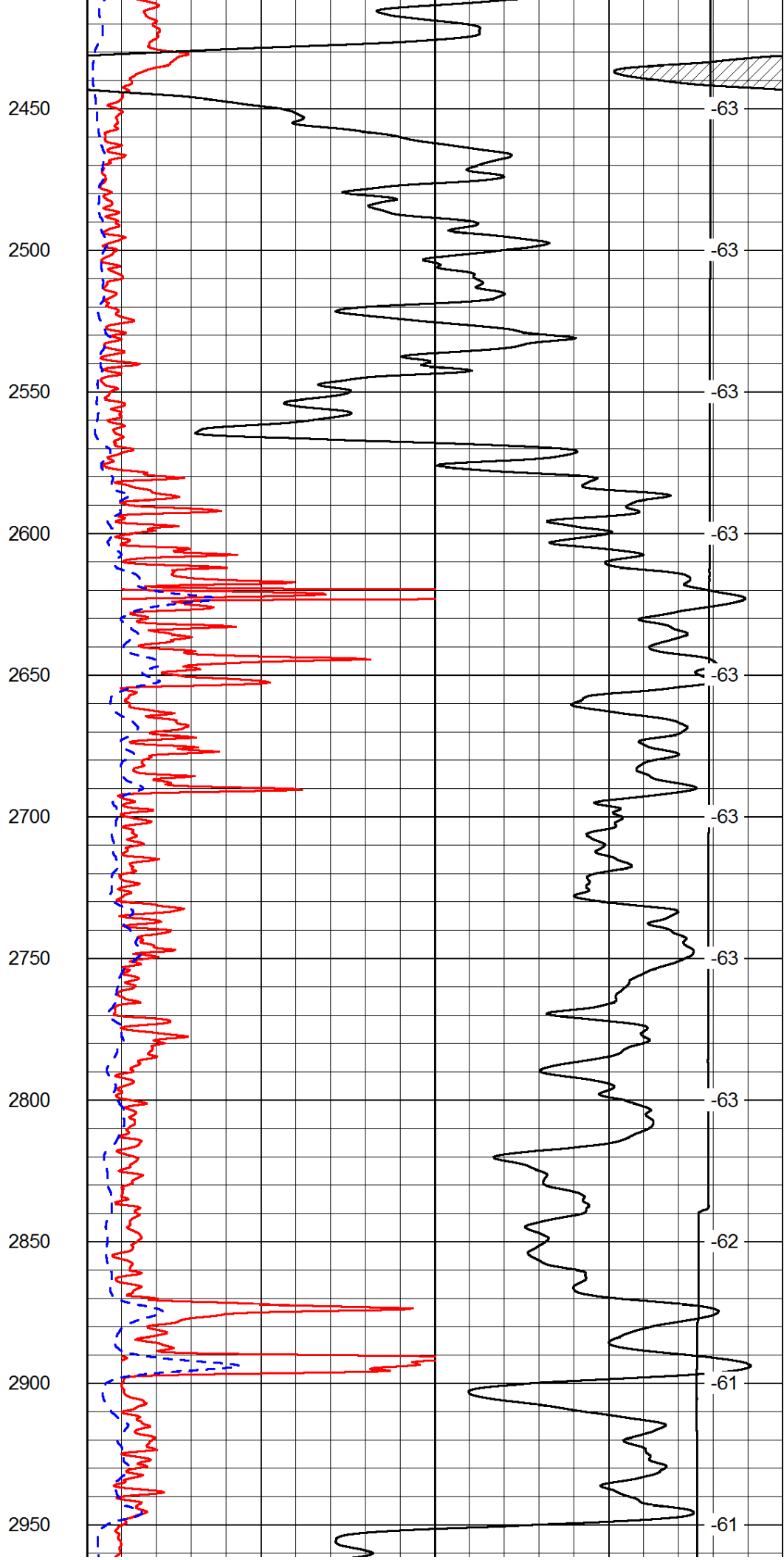
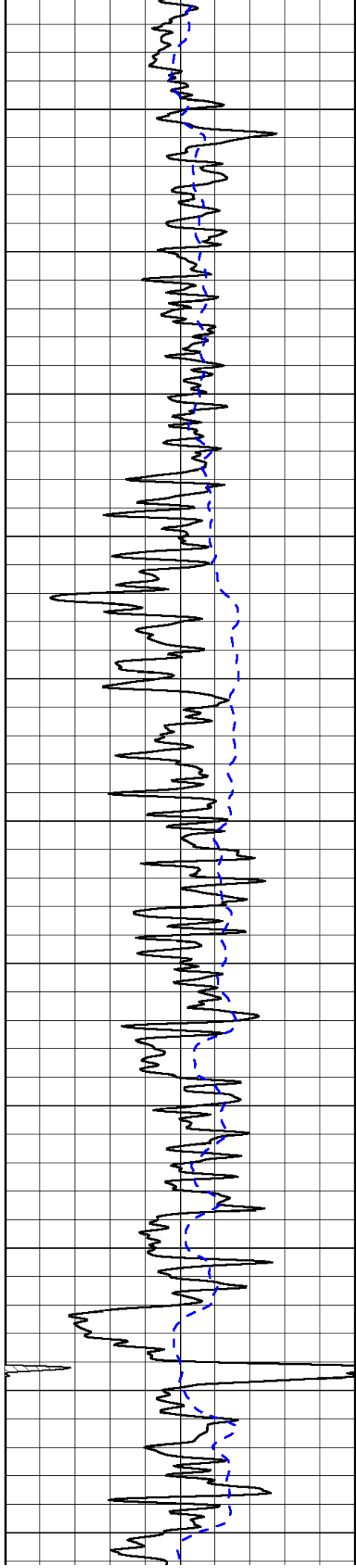
50	Shallow Resistivity	500
50	Deep Resistivity	500

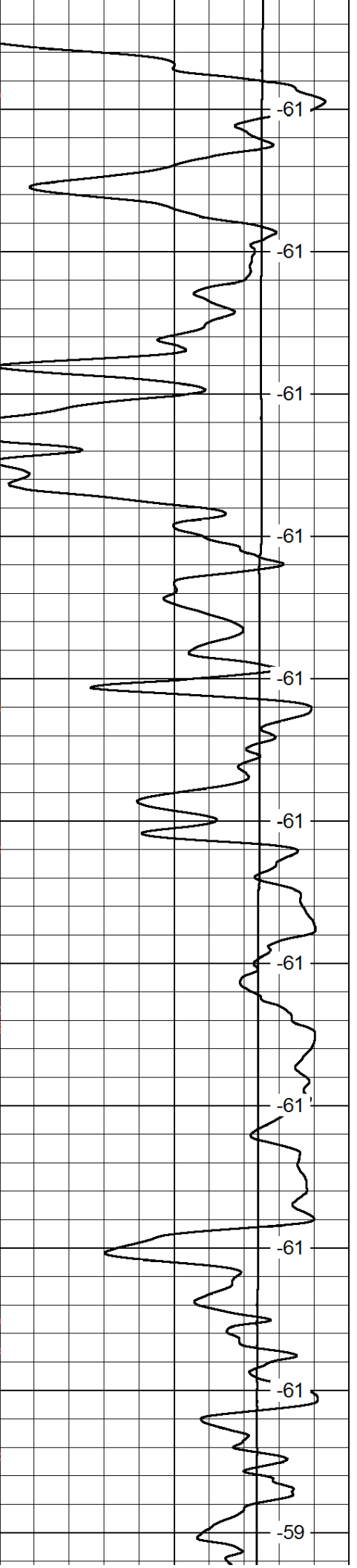
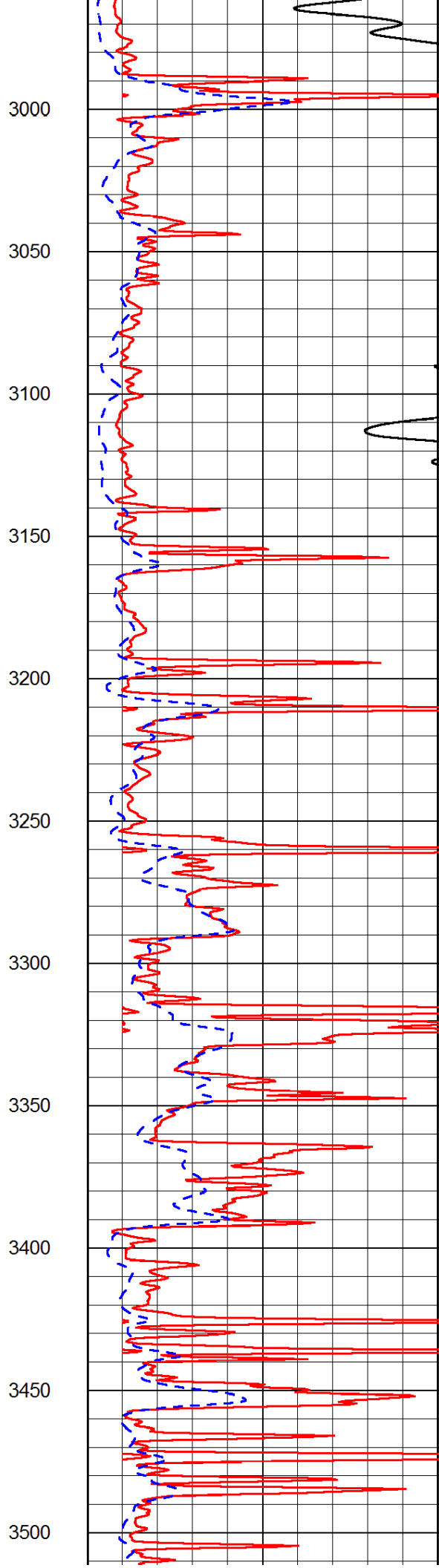
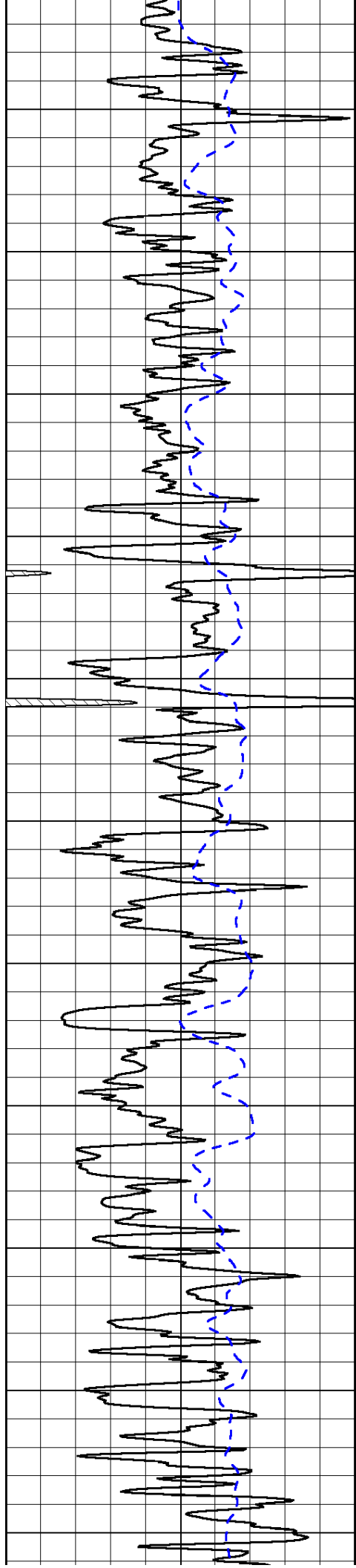


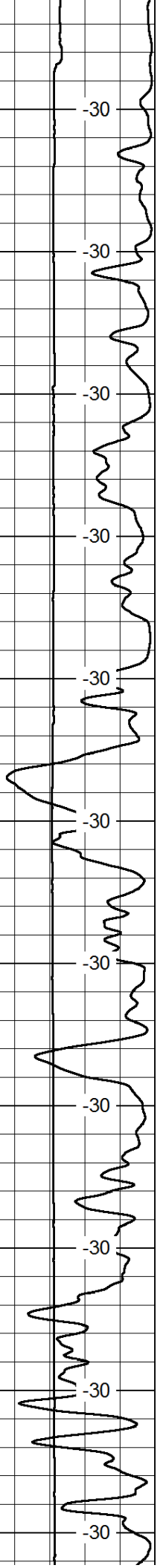
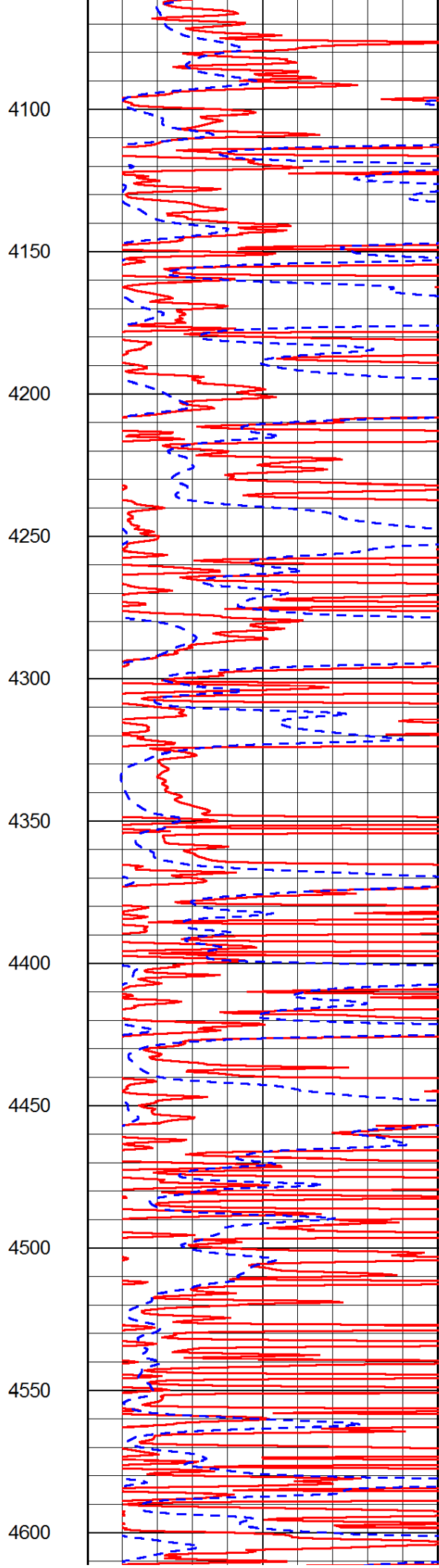
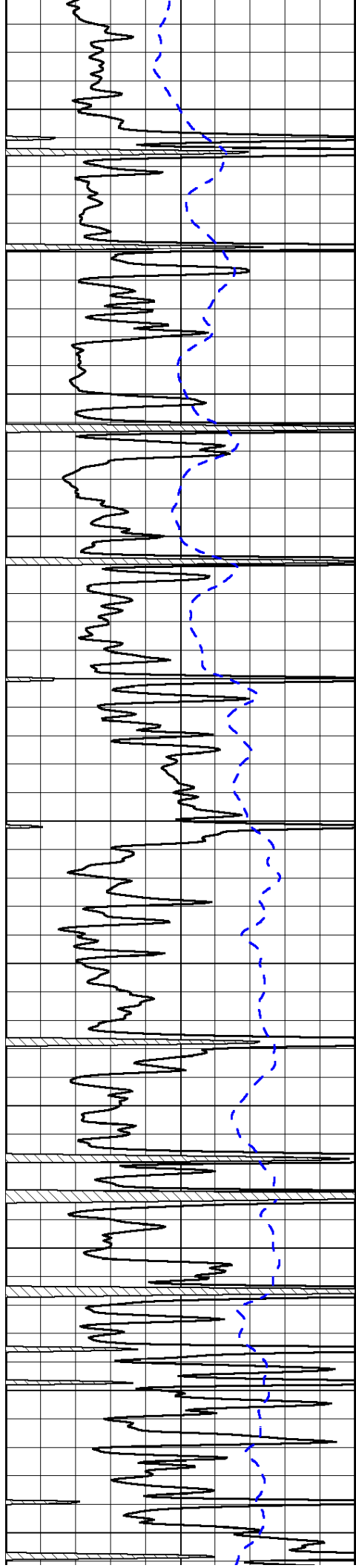


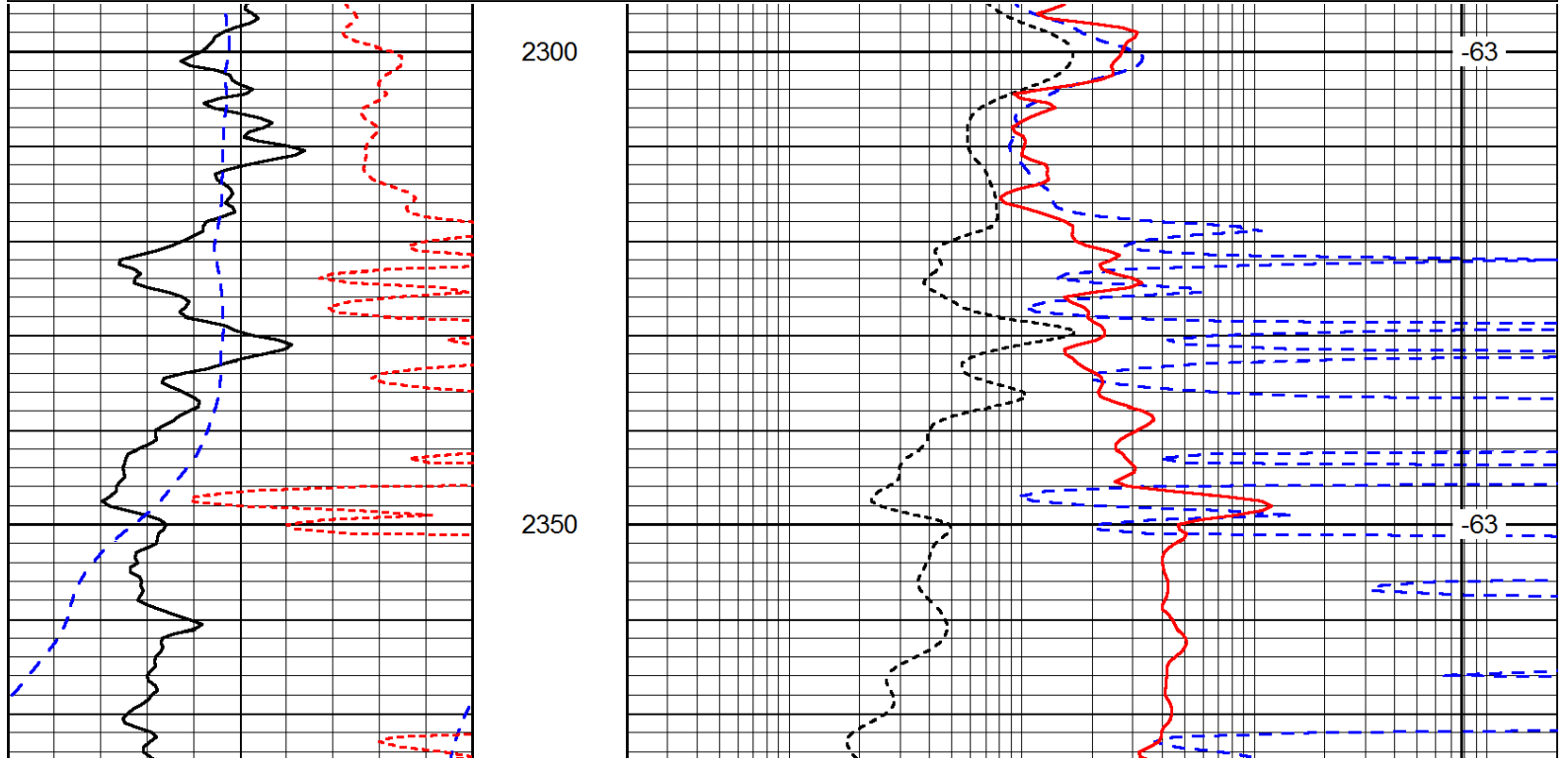
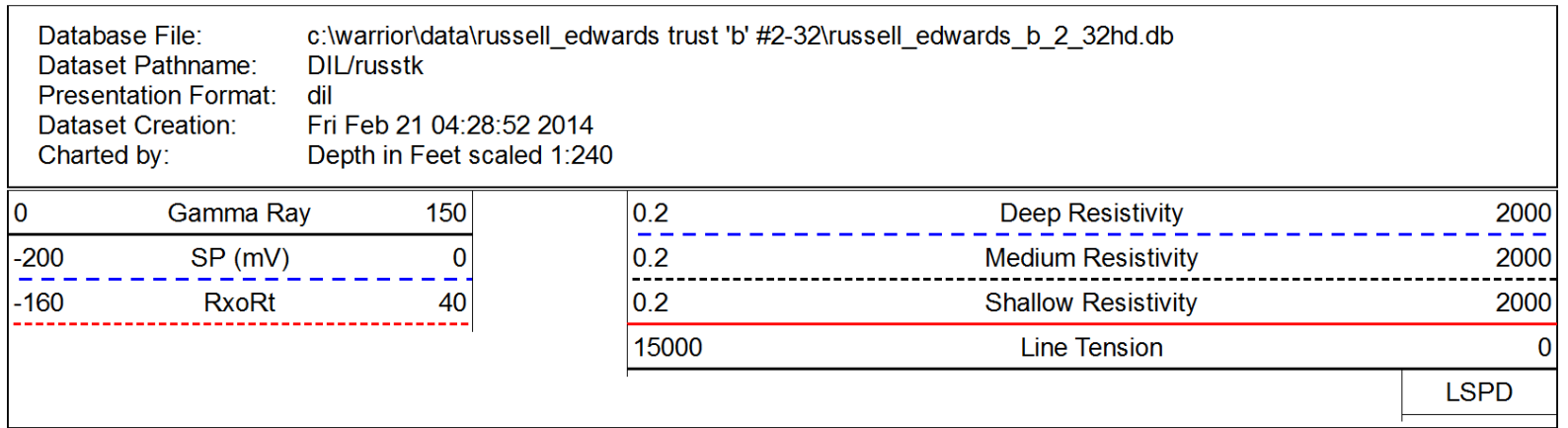
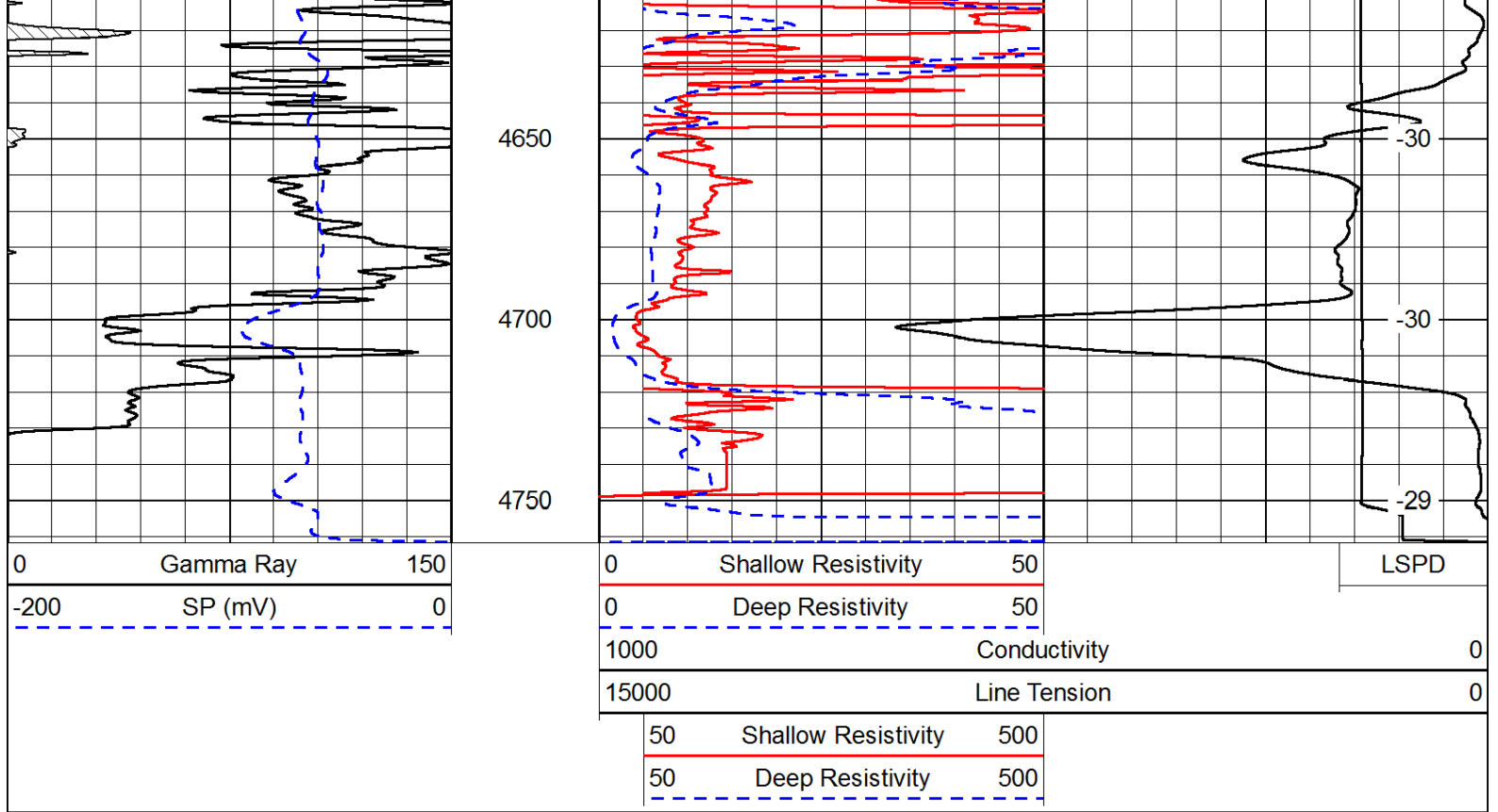


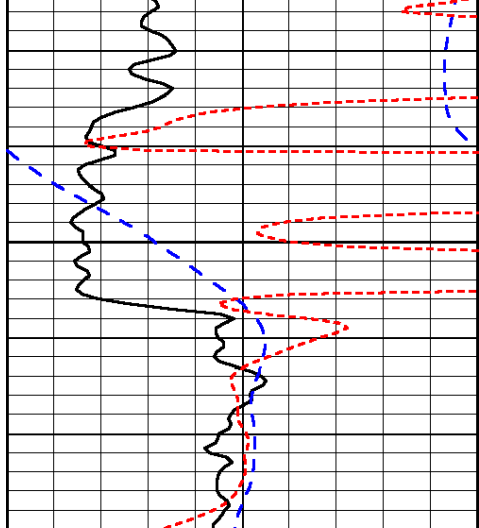




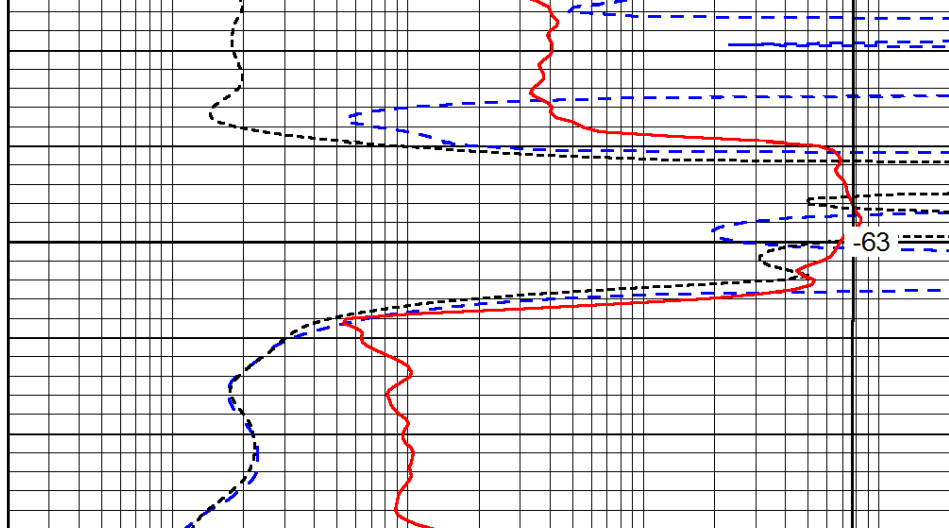








0	Gamma Ray	150
-200	SP (mV)	0
-160	RxoRt	40



0.2	Deep Resistivity	2000
0.2	Medium Resistivity	2000
0.2	Shallow Resistivity	2000
15000	Line Tension	0

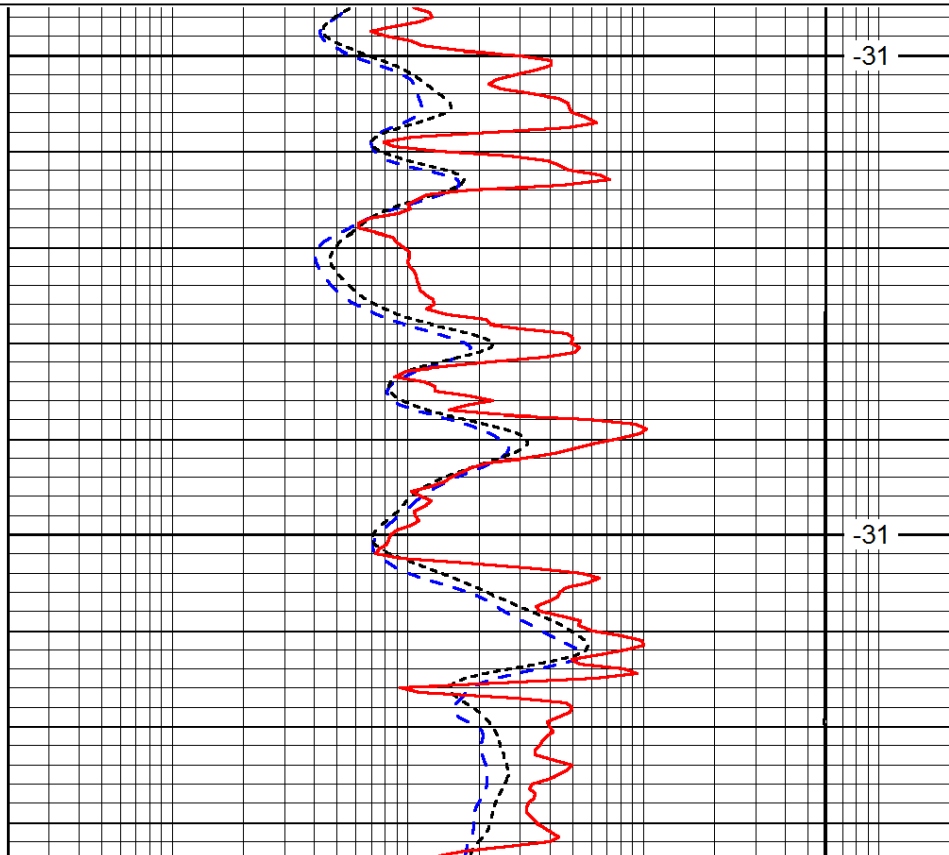
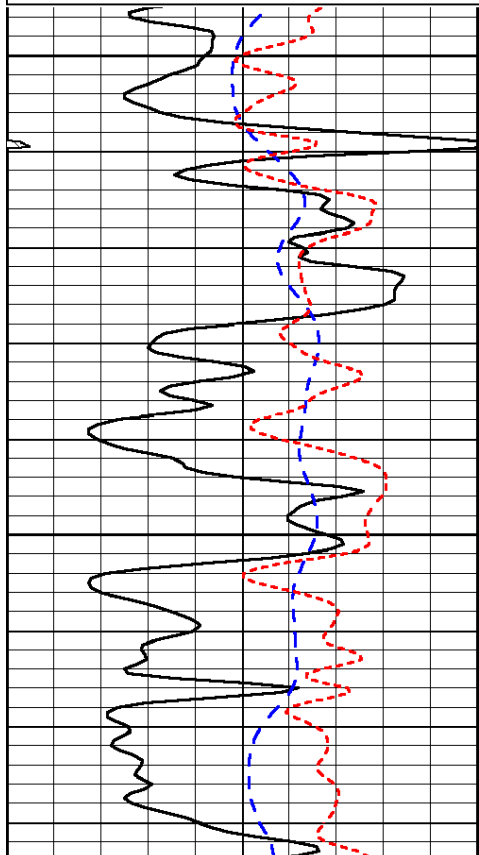
LSPD

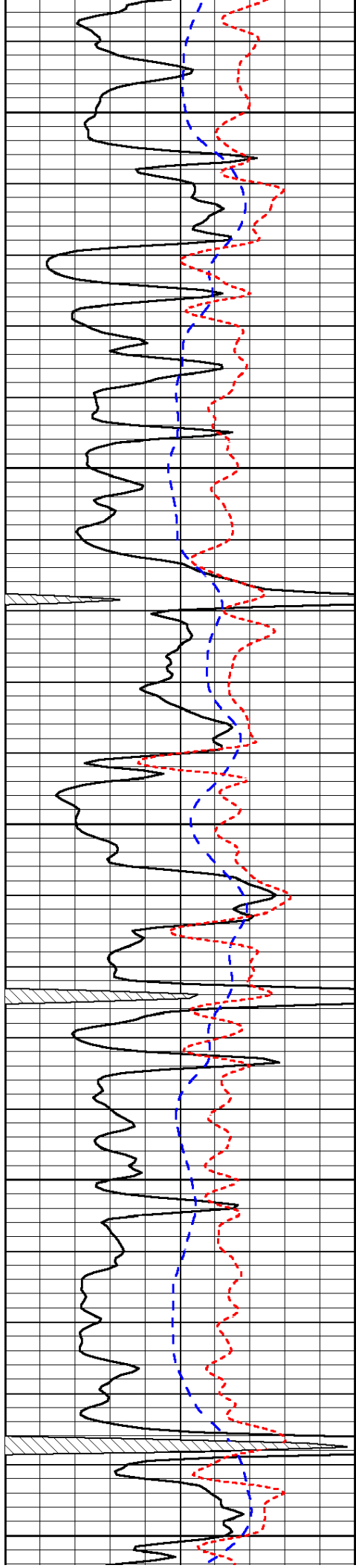
Database File: c:\warrior\data\russell_edwards trust 'b' #2-32\russell_edwards_b_2_32hd.db
 Dataset Pathname: DIL/russtk
 Presentation Format: dil
 Dataset Creation: Fri Feb 21 04:28:52 2014
 Charted by: Depth in Feet scaled 1:240

0	Gamma Ray	150
-200	SP (mV)	0
-160	RxoRt	40

0.2	Deep Resistivity	2000
0.2	Medium Resistivity	2000
0.2	Shallow Resistivity	2000
15000	Line Tension	0

LSPD





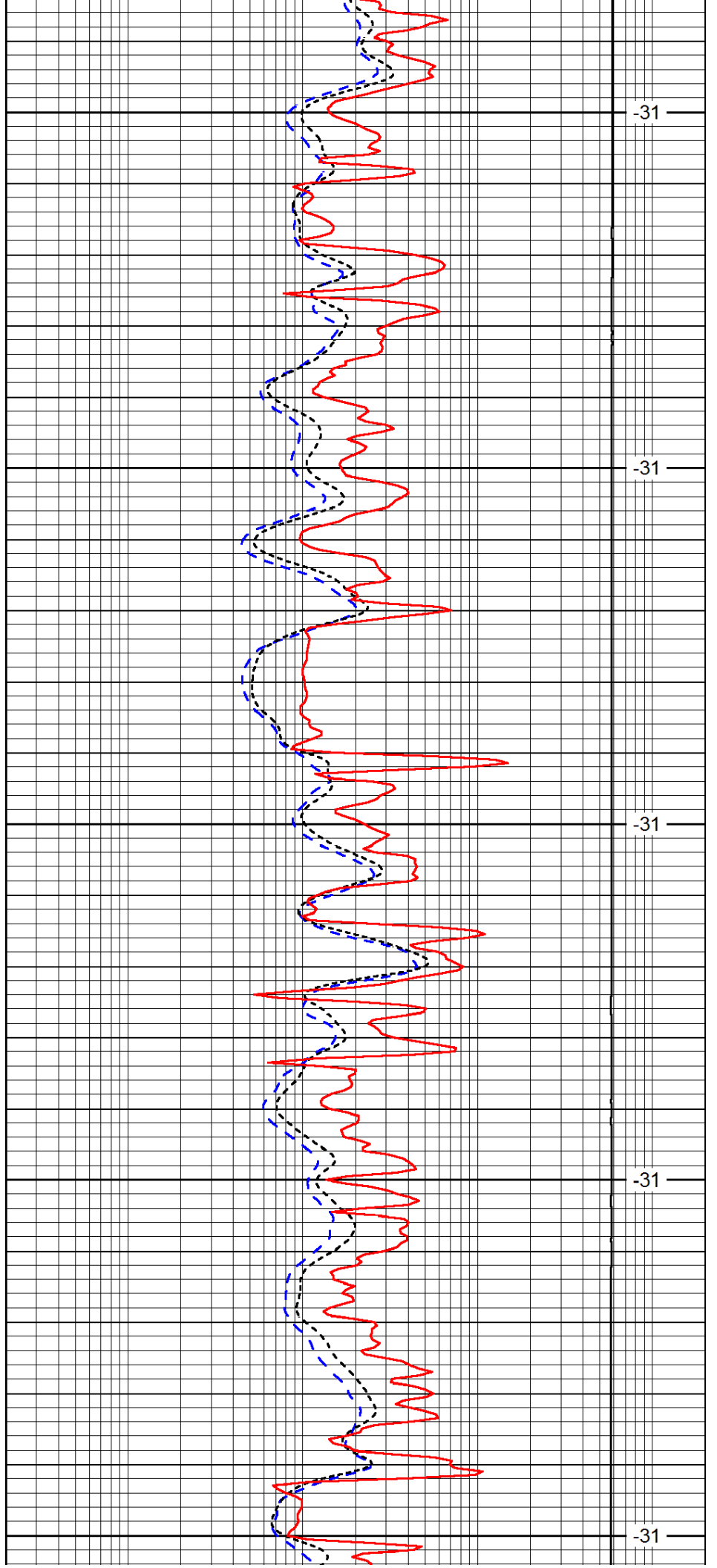
3700

3750

3800

3850

3900



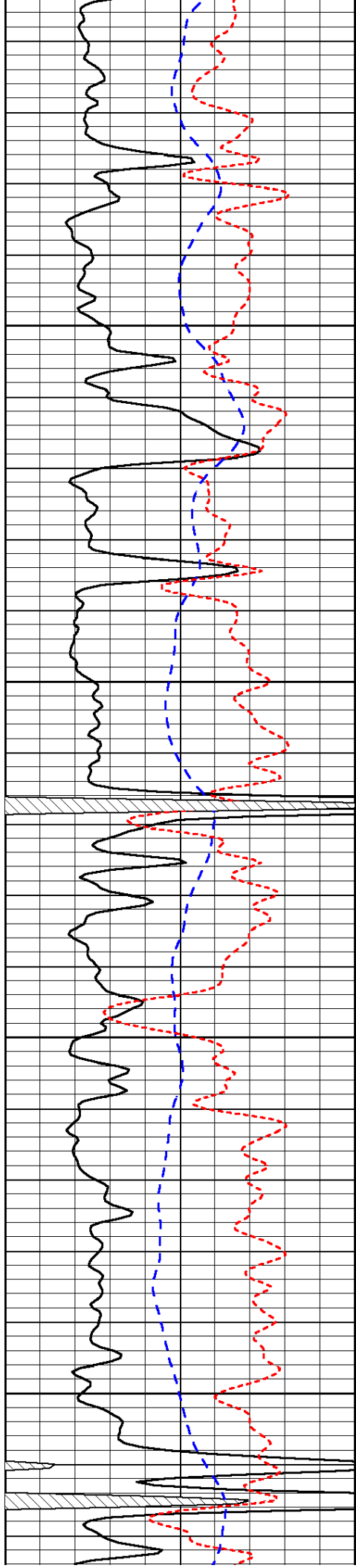
-31

-31

-31

-31

-31

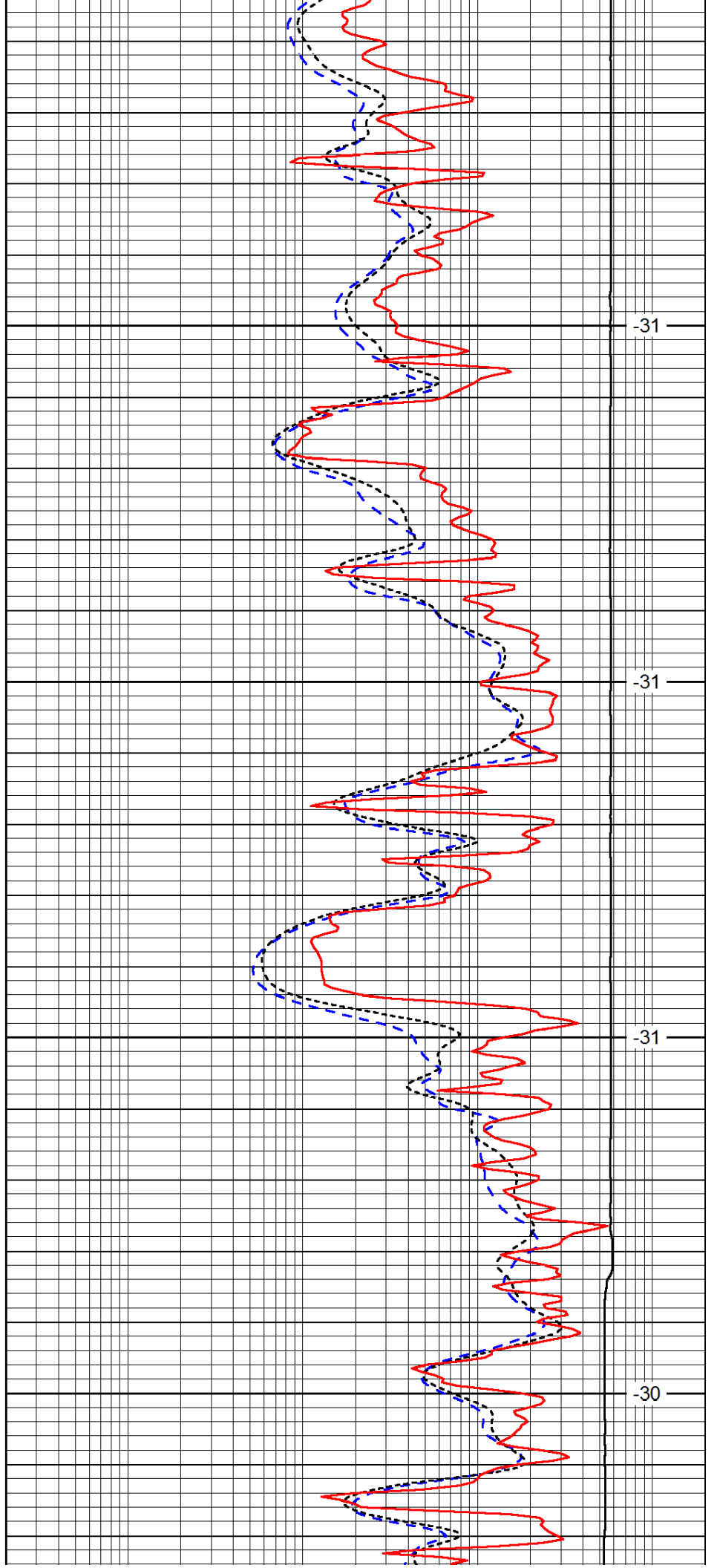


3950

4000

4050

4100

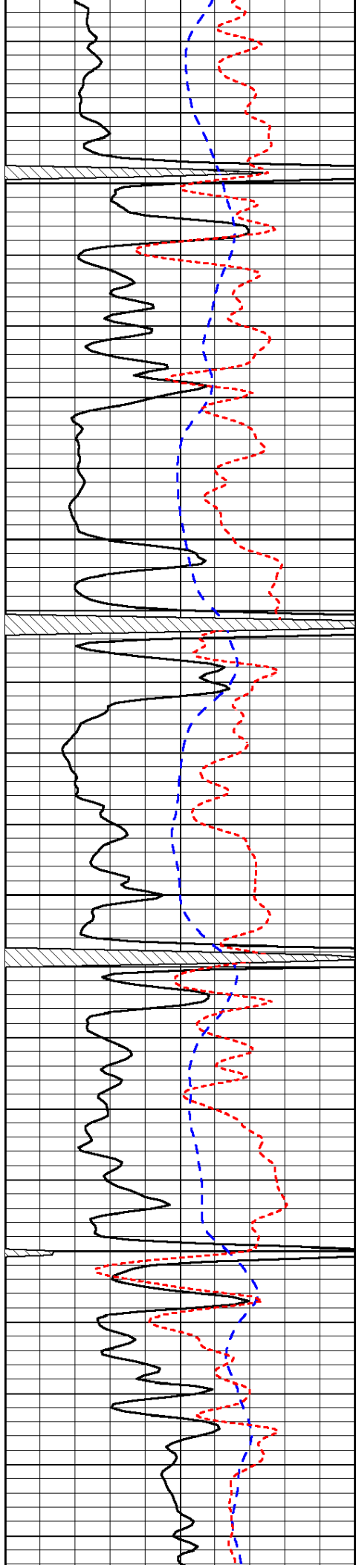


-31

-31

-31

-30

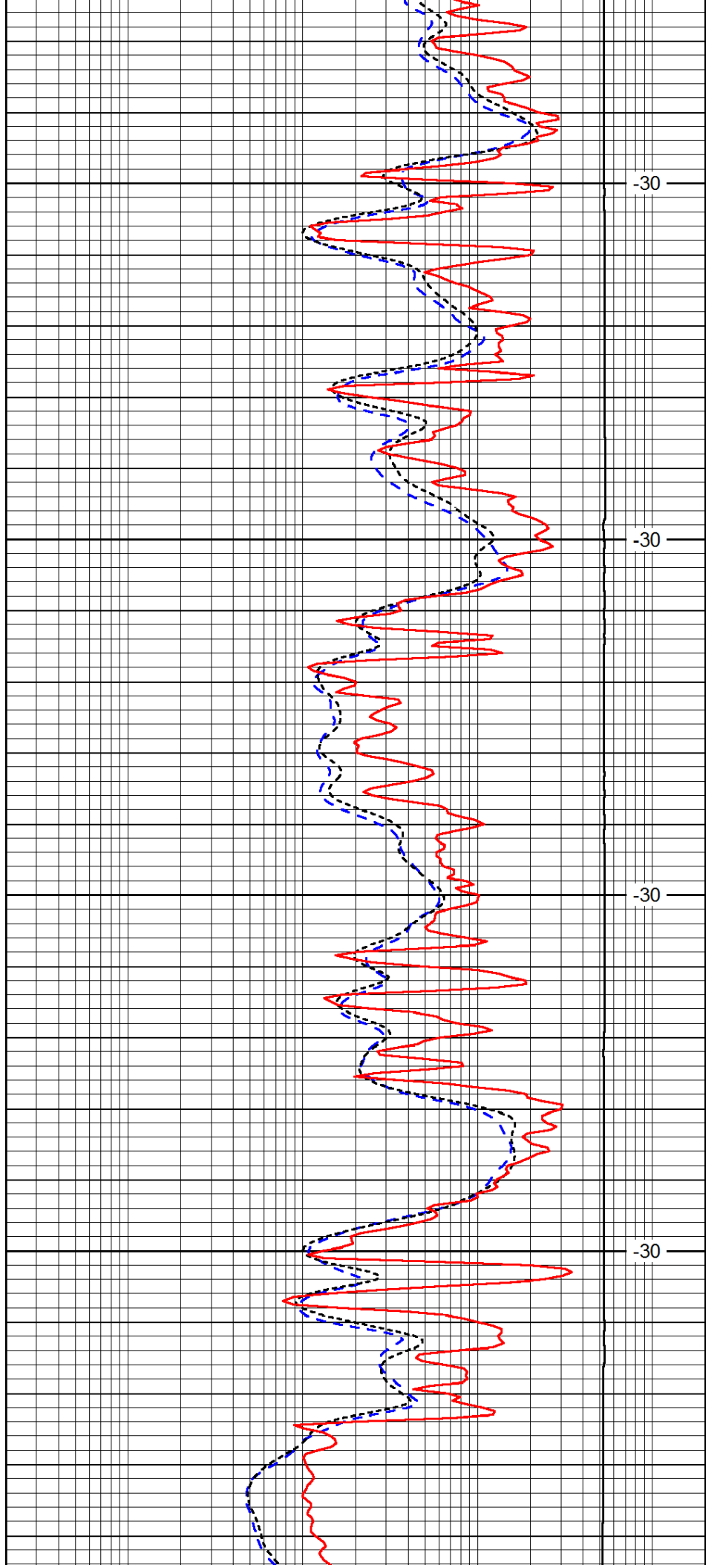


4150

4200

4250

4300

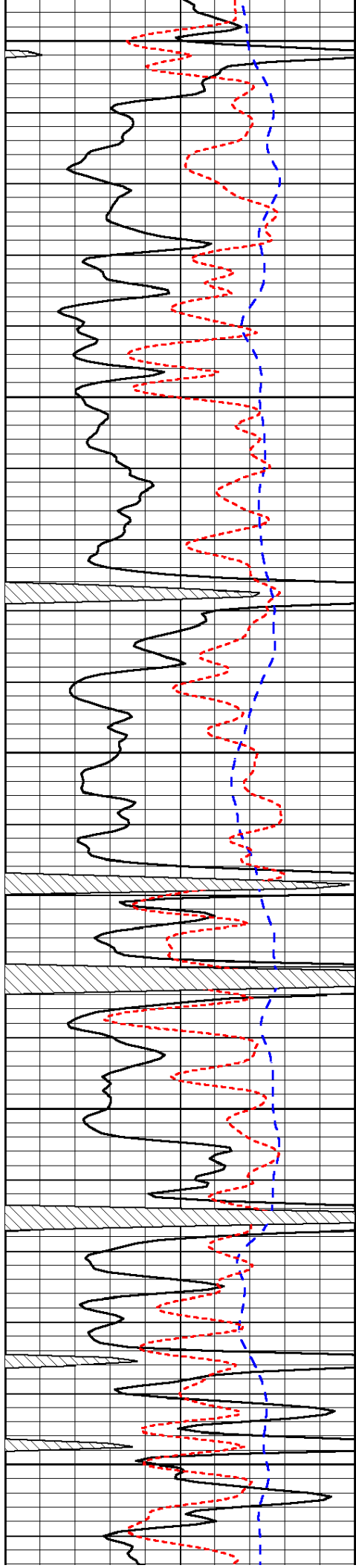


-30

-30

-30

-30



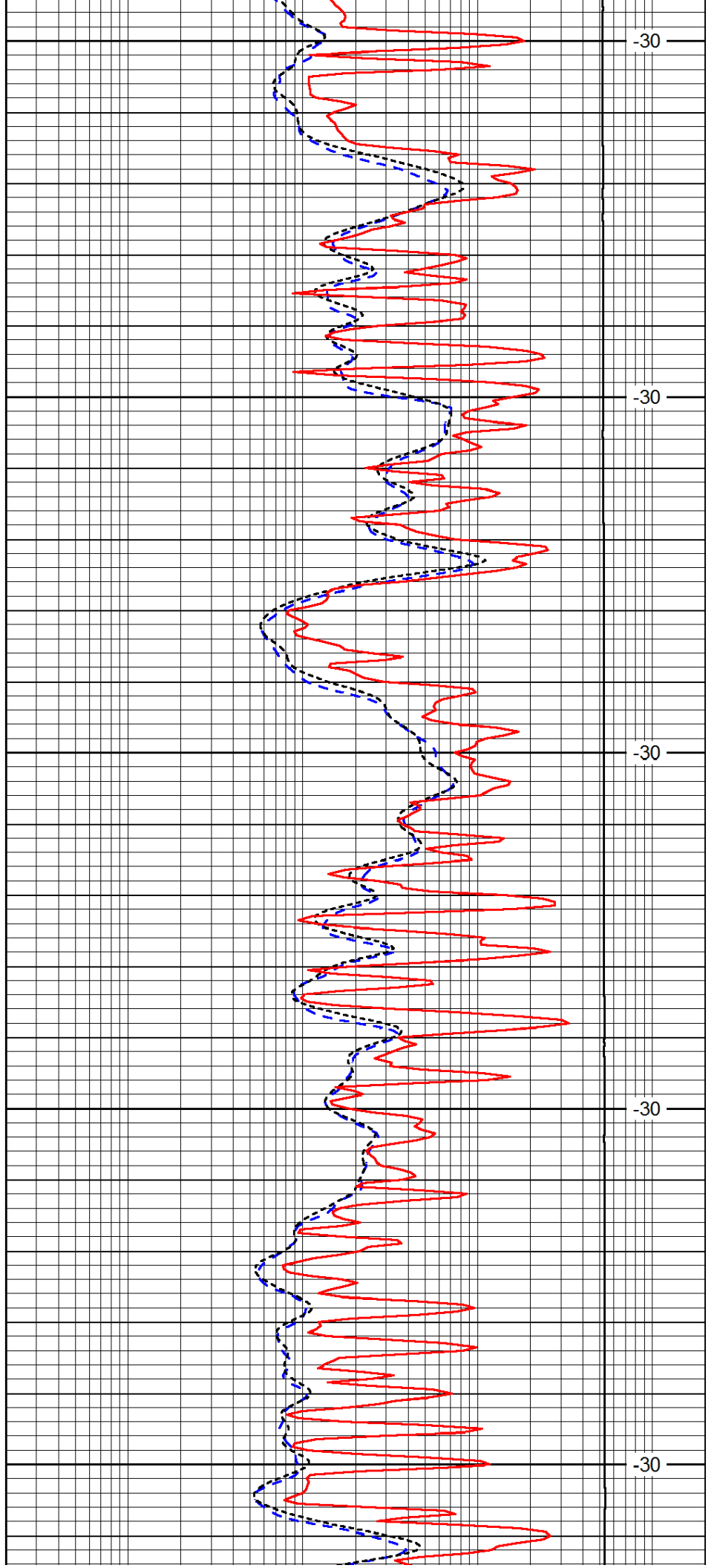
4350

4400

4450

4500

4550



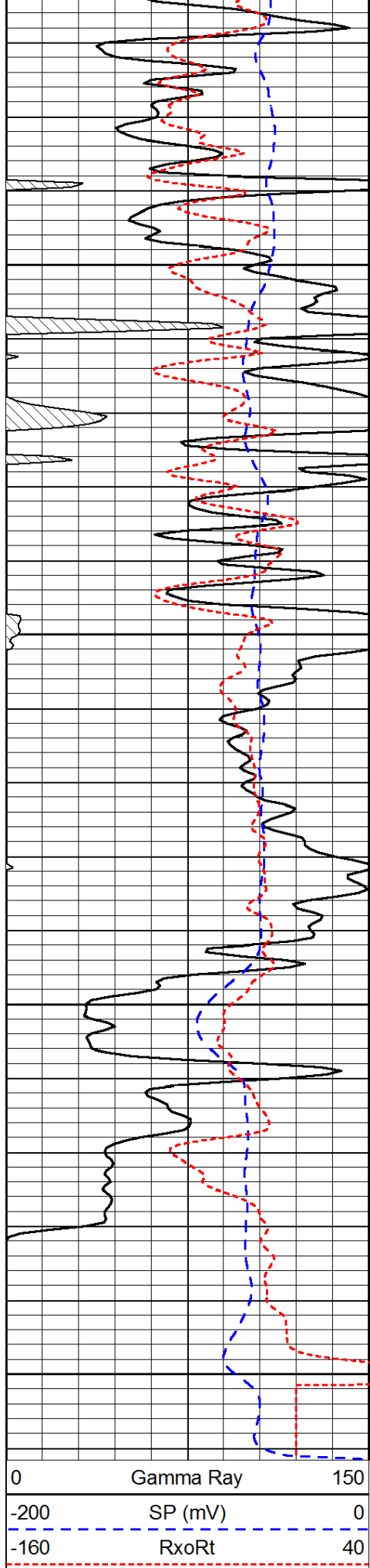
-30

-30

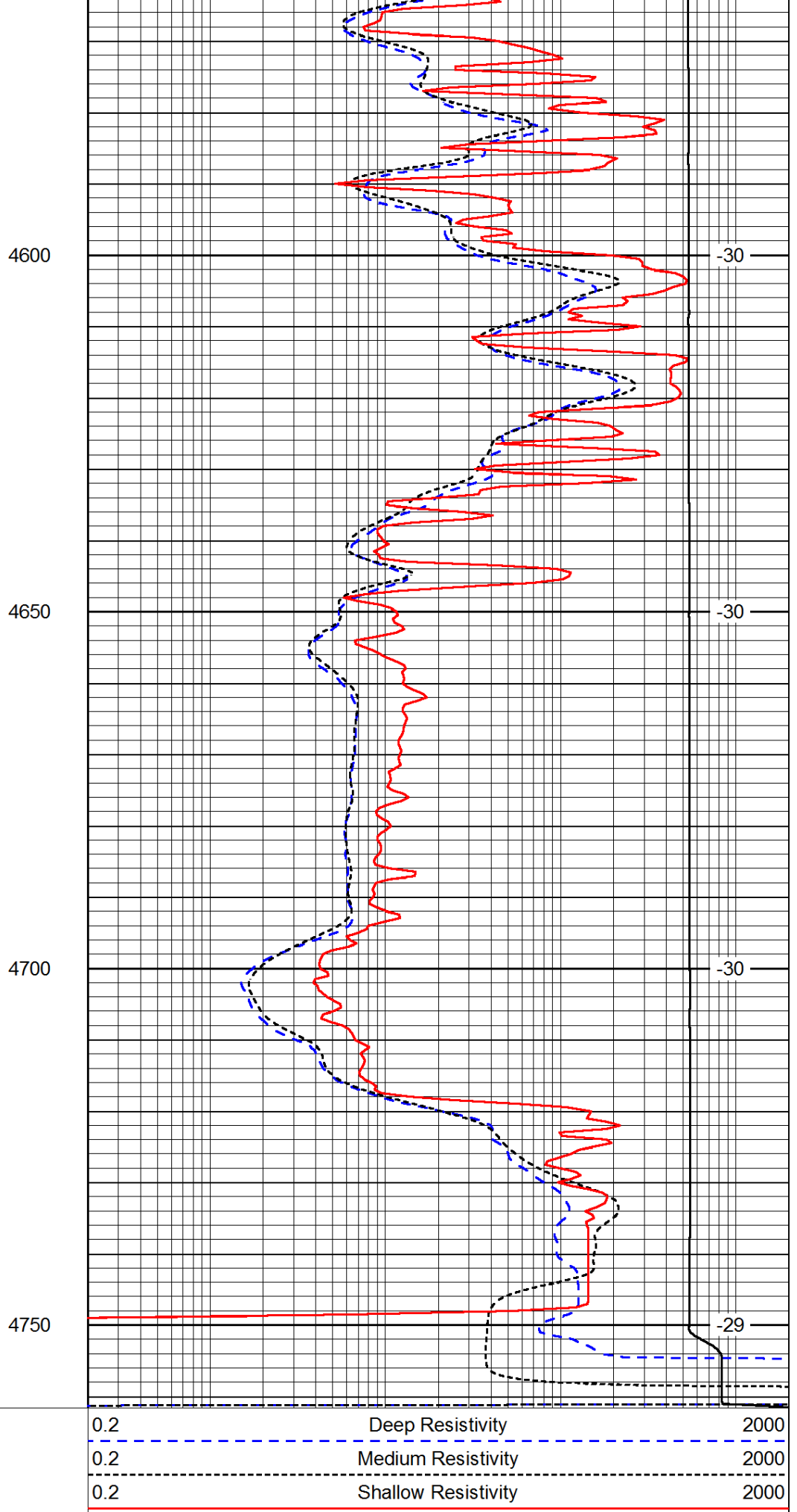
-30

-30

-30



0	Gamma Ray	150
-200	SP (mV)	0
-160	RxoRt	40



0.2	Deep Resistivity	2000
0.2	Medium Resistivity	2000
0.2	Shallow Resistivity	2000
15000	Line Tension	0

