



Pioneer Energy Services

Dual Induction Log

API No.	15-009-25945-00-00		
Company	Daystar Petroleum, Inc.		
Well	Denise #2-28		
Field	Trapp		
County	Barton	State	Kansas
Location	330' FSL & 1320' FWL		
Sec: 28	Twp: 16S	Rge: 13W	Other Services CNL/CDL MEL

Permanent Datum	Ground Level	Elevation 1954	K.B. 1967
Log Measured From	Kelly Bushing	13 Ft. Above Perm. Datum	D.F. 1954
Drilling Measured From	Kelly Bushing		G.L. 1954
Date	2/12/2014		
Run Number	One		
Depth Driller	3483		
Depth Logger	3482		
Bottom Logged Interval	3481		
Top Log Interval	900		
Casing Driller	8.625 @ 919		
Casing Logger	918		
Bit Size	7.875		
Type Fluid in Hole	Chemical		
Salinity, ppm CL	6000		
Density / Viscosity	9.3	61	
pH / Fluid Loss	9.5	9.2	
Source of Sample	Flowline		
Rm @ Meas. Temp	0.52	@ 38	
Rmf @ Meas. Temp	0.39	@ 38	
Rmc @ Meas. Temp	0.70	@ 38	
Source of Rmf / Rmc	Charts		
Rm @ BHT	0.18	@ 113	
Operating Rig Time	3 Hours		
Max Rec. Temp. F	113		
Equipment Number	91		
Location	Hays		
Recorded By	D. Schmidt		
Witnessed By	Jim Musgrove	Clint Musgrove	

<<< Fold Here >>>

All interpretations are opinions based on inferences from electrical or other measurements and we cannot and do not guarantee the accuracy or correctness of any interpretation, and we shall not, except in the case of gross or willful negligence on our part, be liable or responsible for any loss, costs, damages, or expenses incurred or sustained by anyone resulting from any interpretation made by any of our officers, agents or employees. These interpretations are also subject to our general terms and conditions set out in our current Price Schedule.

Comments

Thank you for using Log-Tech, Inc.
(785) 625-3858

Susank,
1 South, 1/2 East,
North into

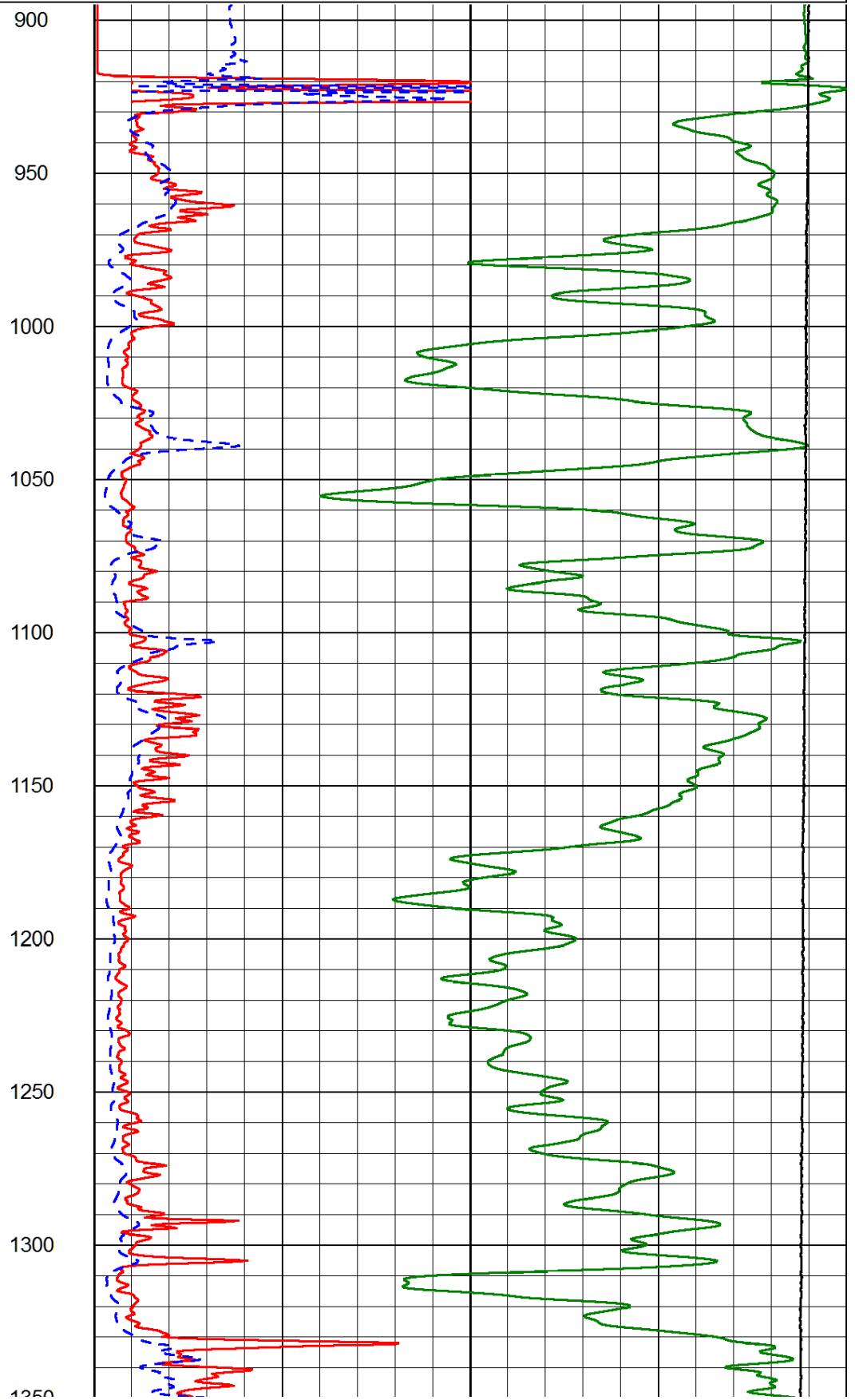
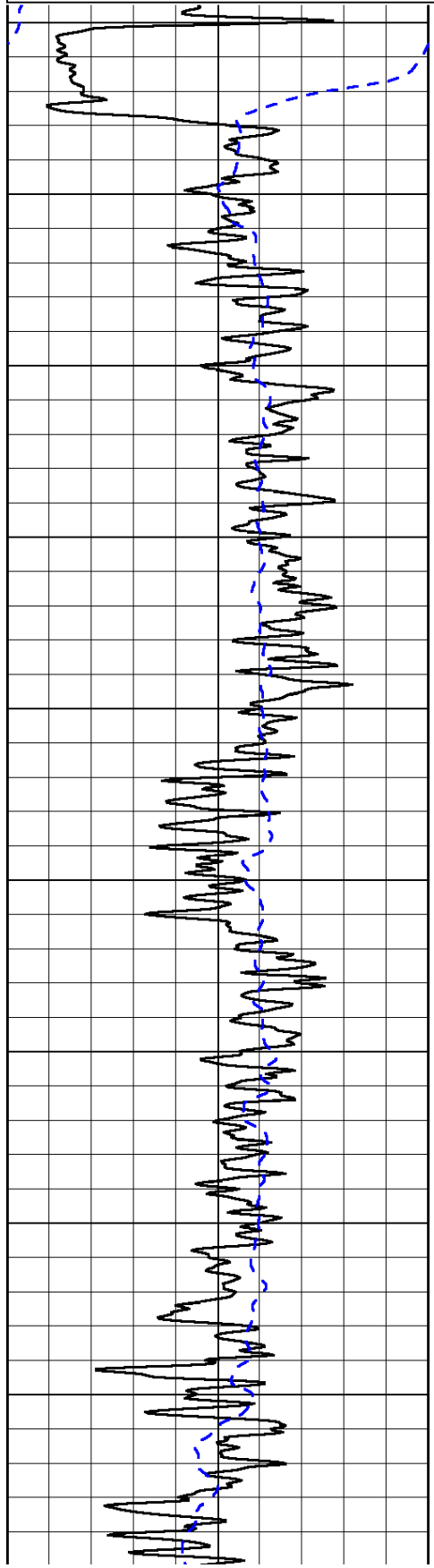
Database File: daystar_021214hd.db
 Dataset Pathname: dil/daystck
 Presentation Format: dil2in
 Dataset Creation: Wed Feb 12 13:13:17 2014
 Charted by: Depth in Feet scaled 1:600

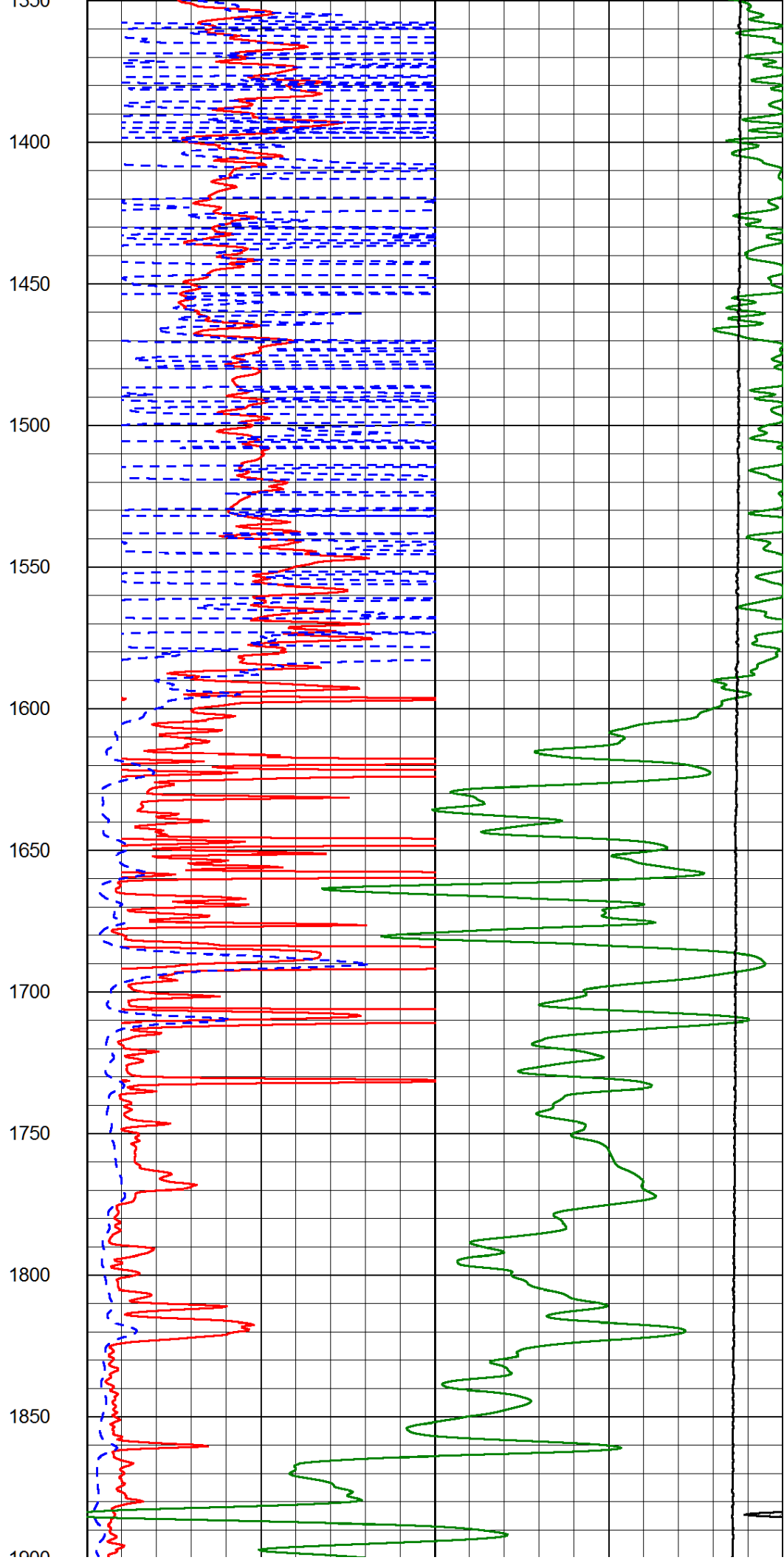
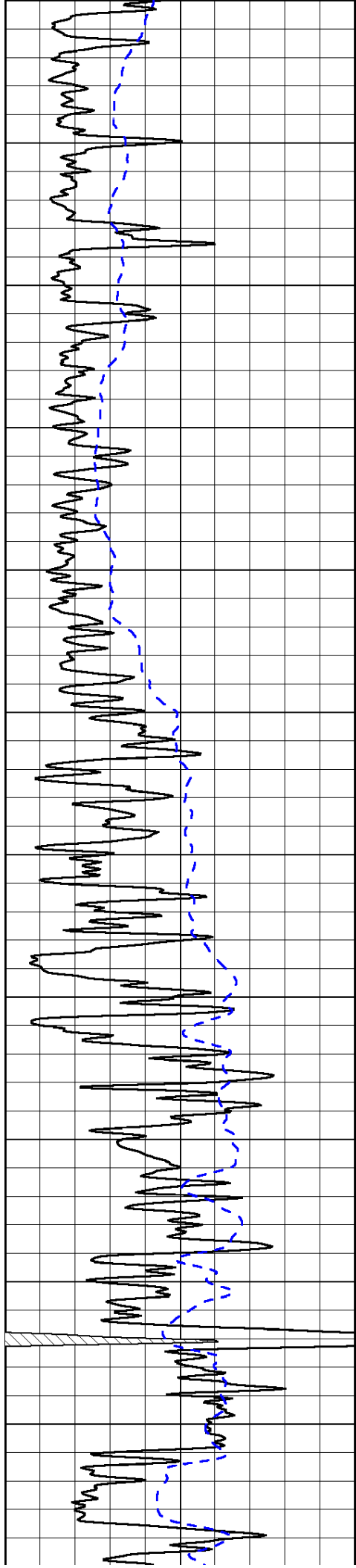
0	Gamma Ray (GAPI)	150
-200	SP (mV)	0

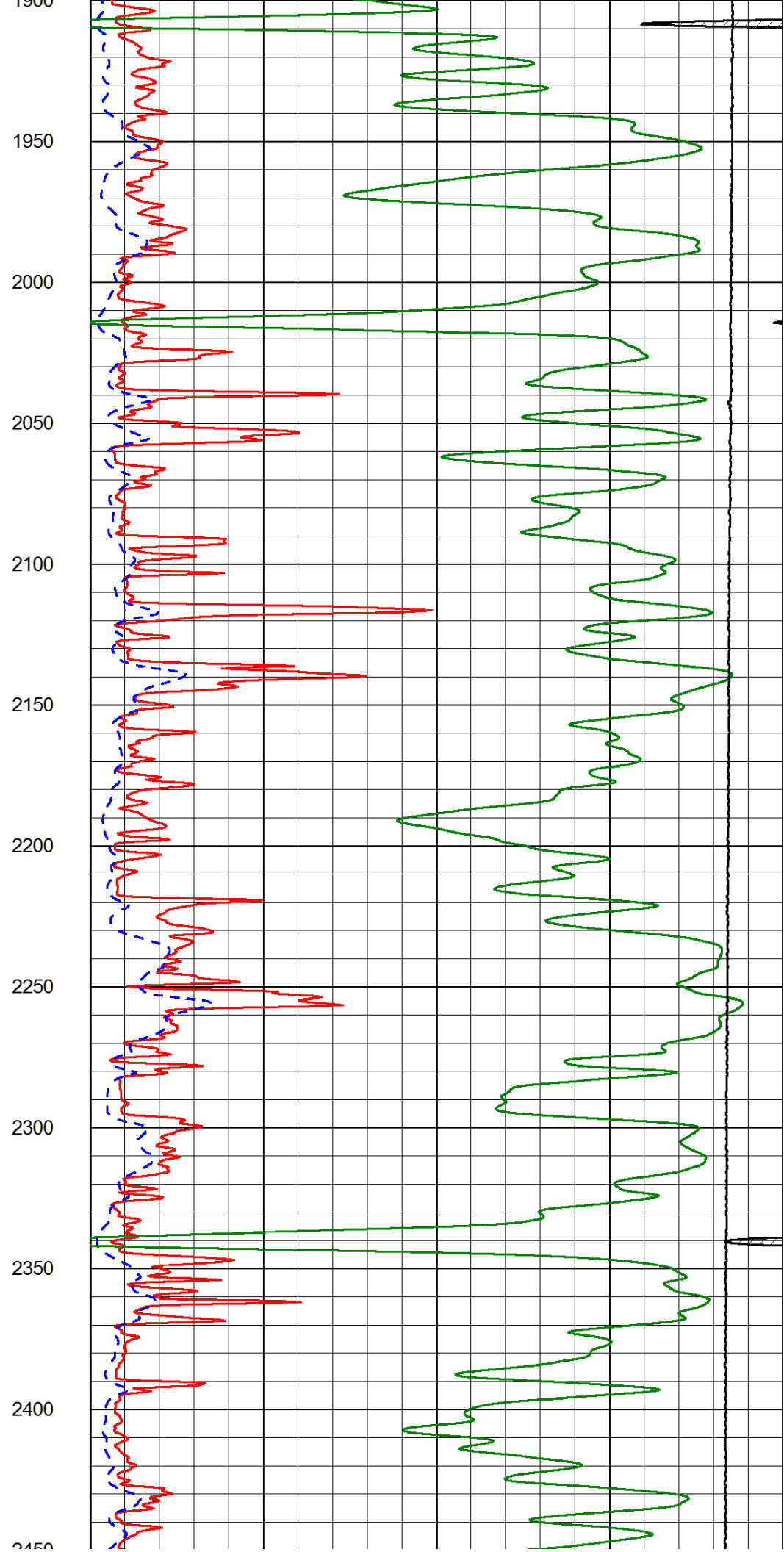
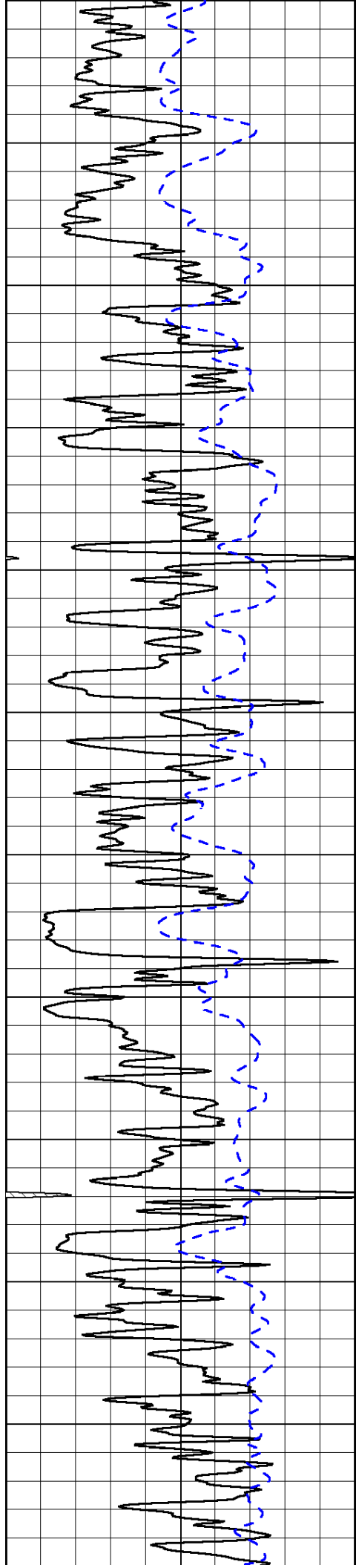
0	Shallow Resistivity (Ohm-m)	50
0	Deep Resistivity (Ohm-m)	50

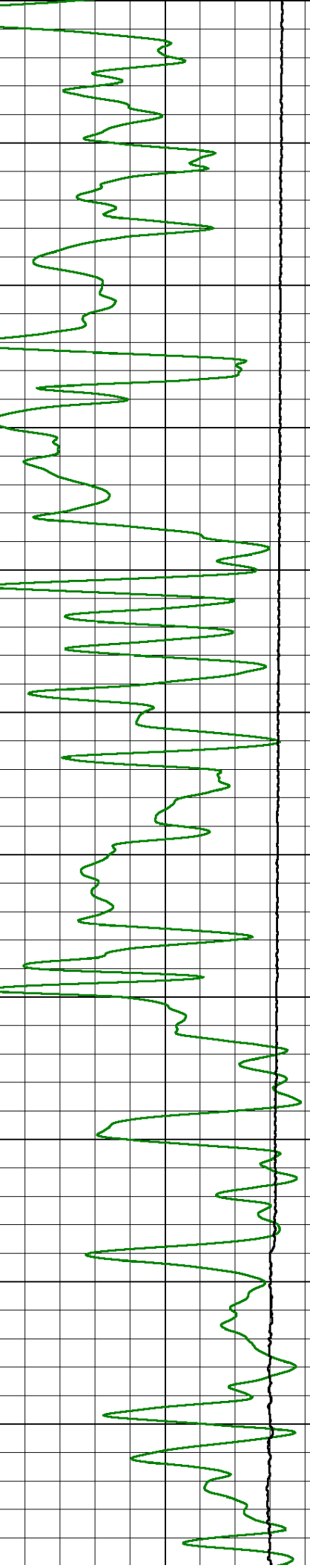
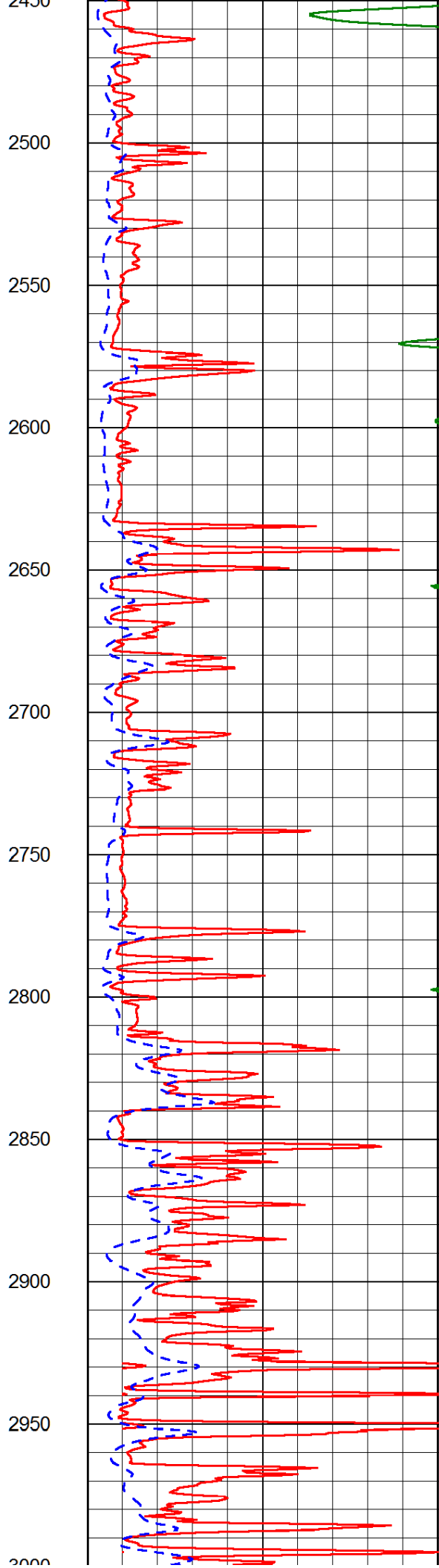
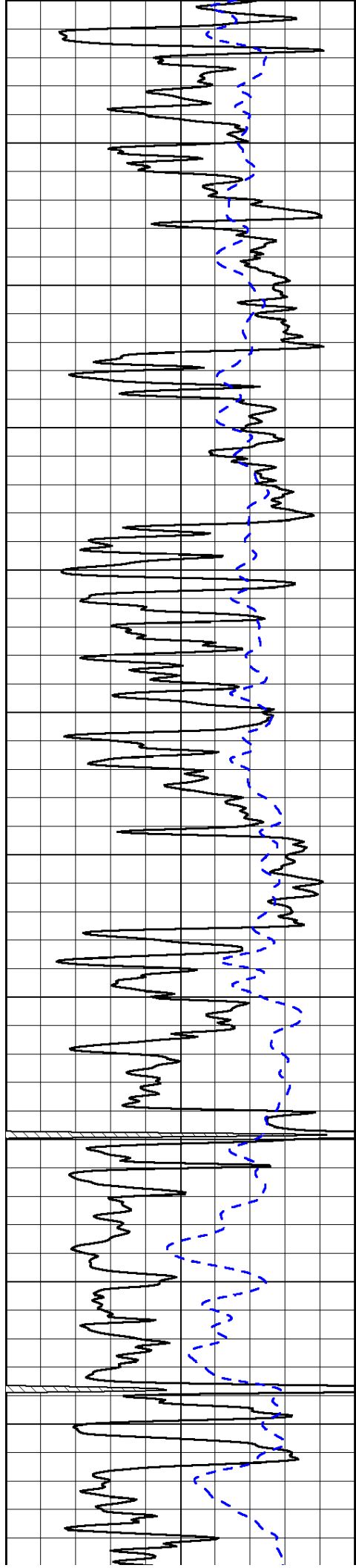
1000	Conductivity (Ohm-m)	0
15000	Line Tension (lb)	0

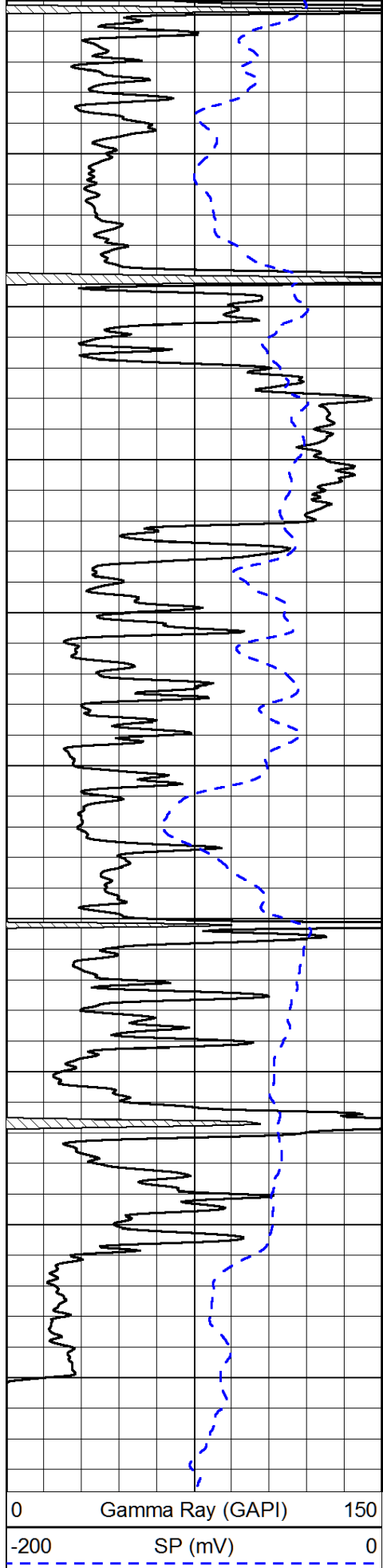
Shallow Resistivity		
50	(Ohm-m)	500
50	Deep Resistivity (Ohm-m)	500



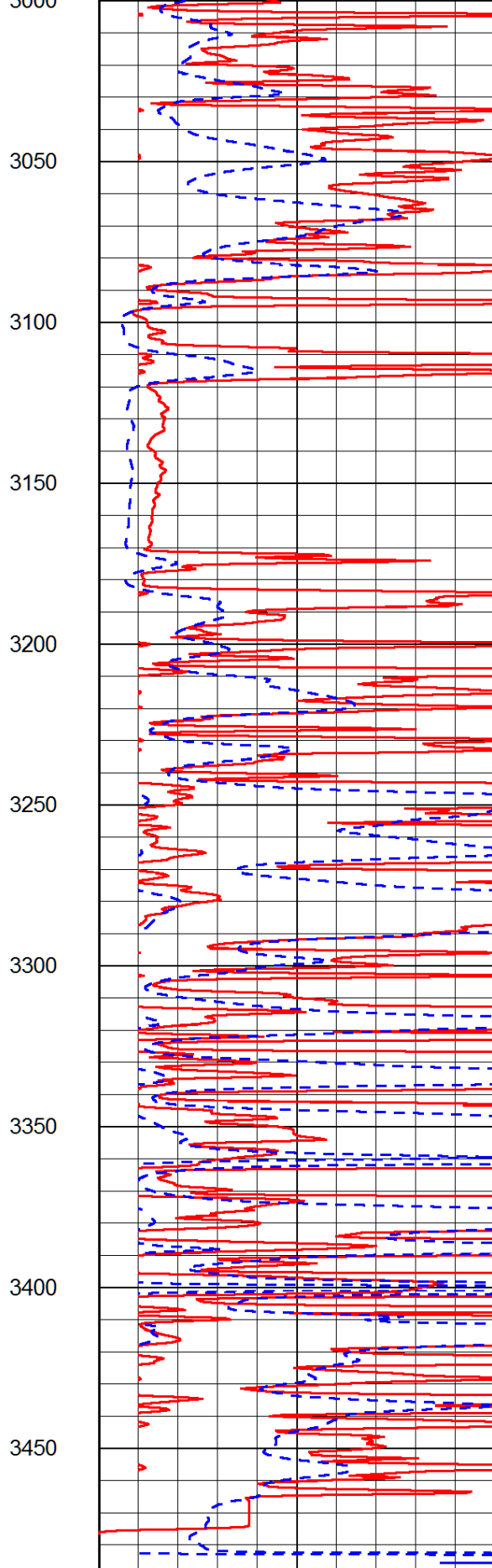




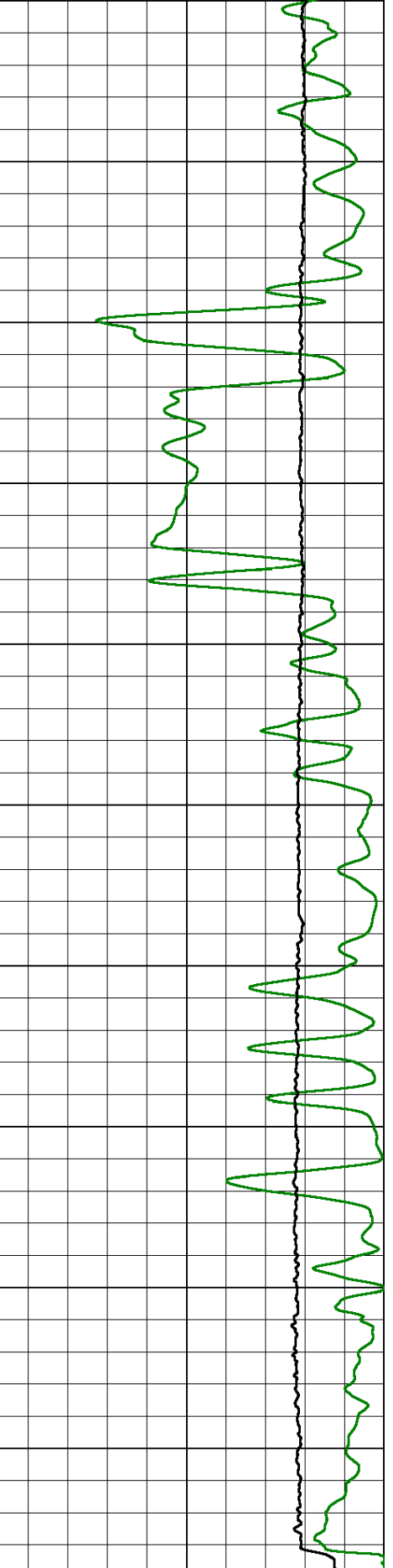




0 Gamma Ray (GAPI) 150
 -200 SP (mV) 0



0 Shallow Resistivity (Ohm-m) 50
 0 Deep Resistivity (Ohm-m) 50



1000 Conductivity (Ohm-m) 0
 15000 Line Tension (lb) 0

Shallow Resistivity

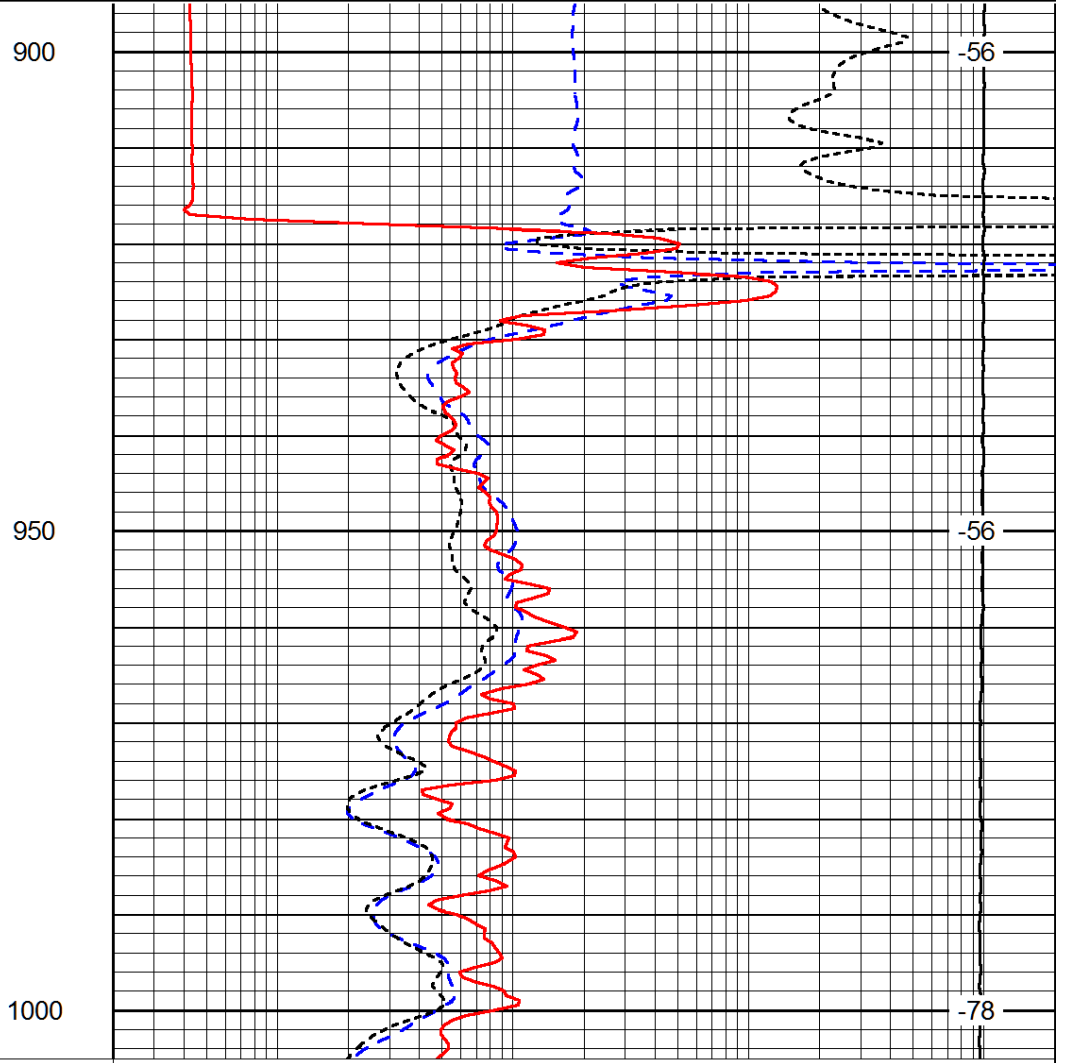
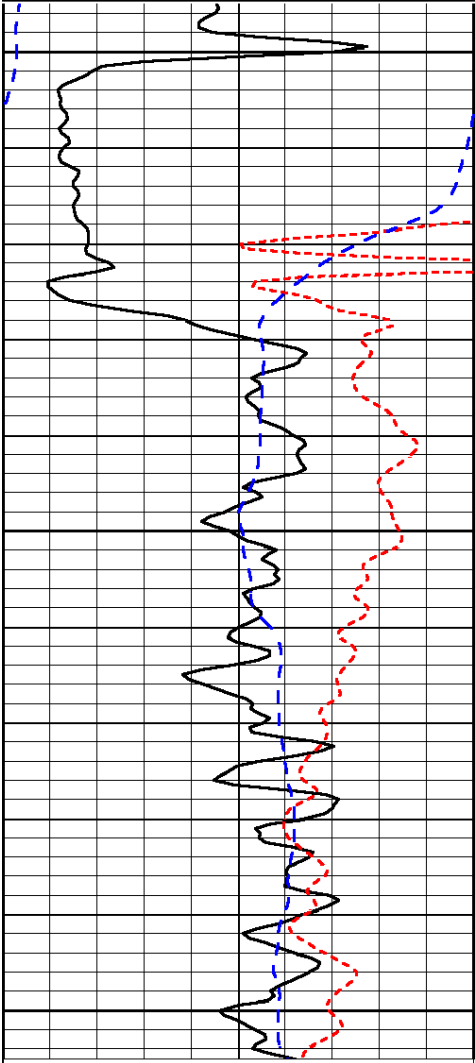
50 (Ohm-m) 500
 50 Deep Resistivity (Ohm-m) 500

Database File: daystar_021214hd.db
 Dataset Pathname: dil/daystck
 Presentation Format: dil
 Dataset Creation: Wed Feb 12 13:13:17 2014
 Charted by: Depth in Feet scaled 1:240

0 Gamma Ray (GAPI) 150
 -160 RXO/RT 40
 -200 SP (mV) 0

0.2 Deep Resistivity (Ohm-m) 2000
 0.2 Medium Resistivity (Ohm-m) 2000
 0.2 Shallow Resistivity (Ohm-m) 2000
 10000 Line Tension (lb) 0

LSPD
(ft/min)



0 Gamma Ray (GAPI) 150
 -160 RXO/RT 40
 -200 SP (mV) 0

0.2 Deep Resistivity (Ohm-m) 2000
 0.2 Medium Resistivity (Ohm-m) 2000
 0.2 Shallow Resistivity (Ohm-m) 2000
 10000 Line Tension (lb) 0

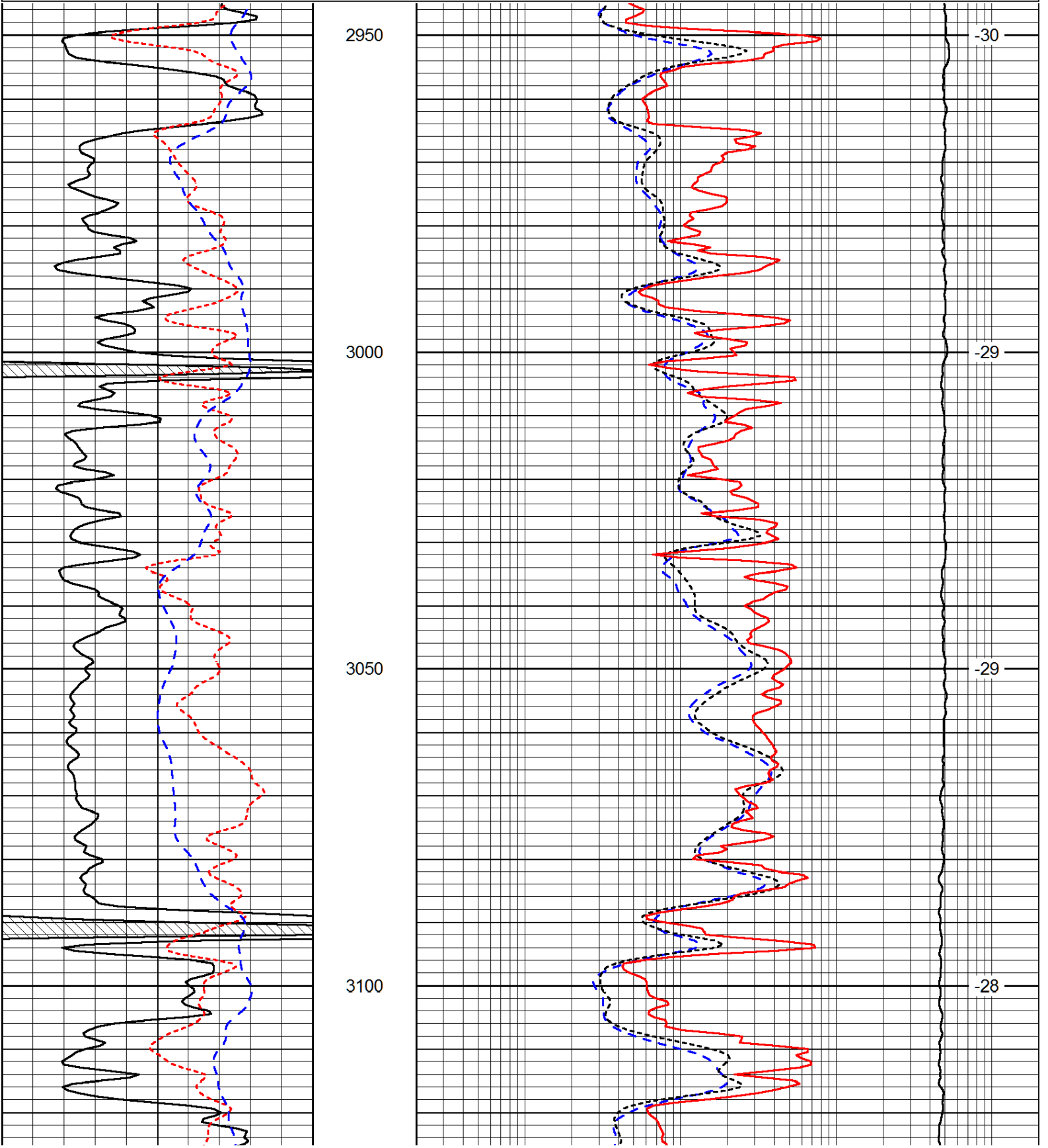
LSPD
(ft/min)

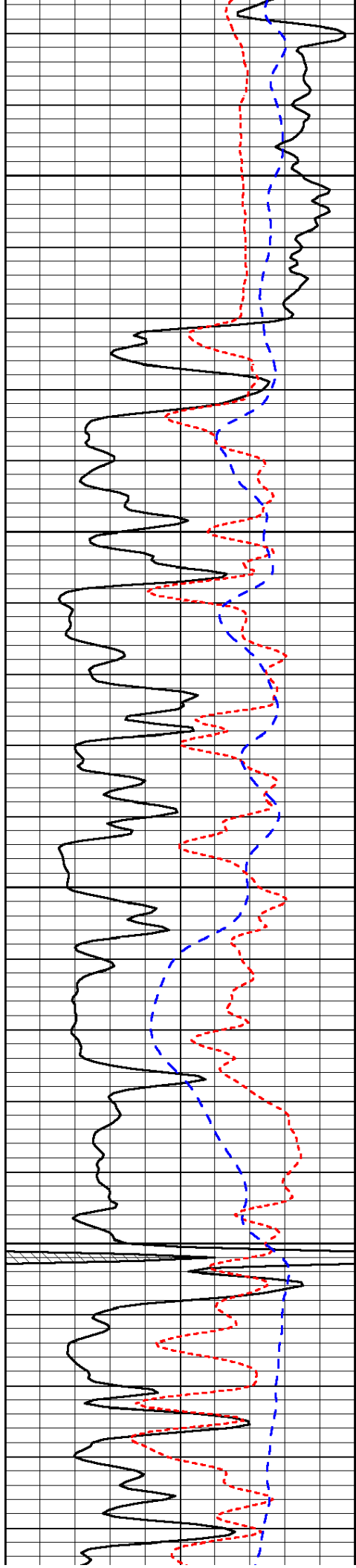
Database File: daystar_021214hd.db
 Dataset Pathname: dil/daystck
 Presentation Format: dil

0	Gamma Ray (GAPI)	150
-160	RXO/RT	40
-200	SP (mV)	0

0.2	Deep Resistivity (Ohm-m)	2000
0.2	Medium Resistivity (Ohm-m)	2000
0.2	Shallow Resistivity (Ohm-m)	2000
10000	Line Tension (lb)	0

LSPD
(ft/min)



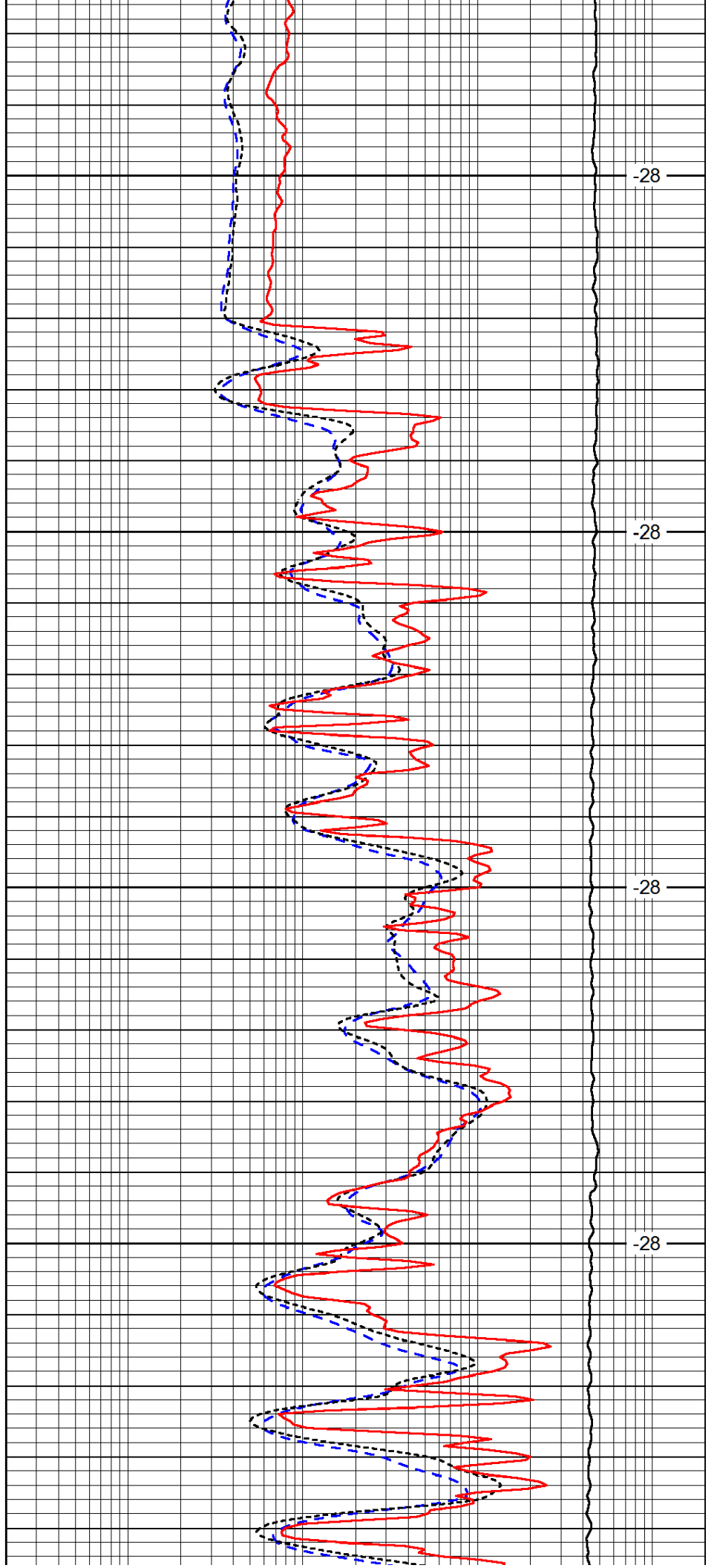


3150

3200

3250

3300

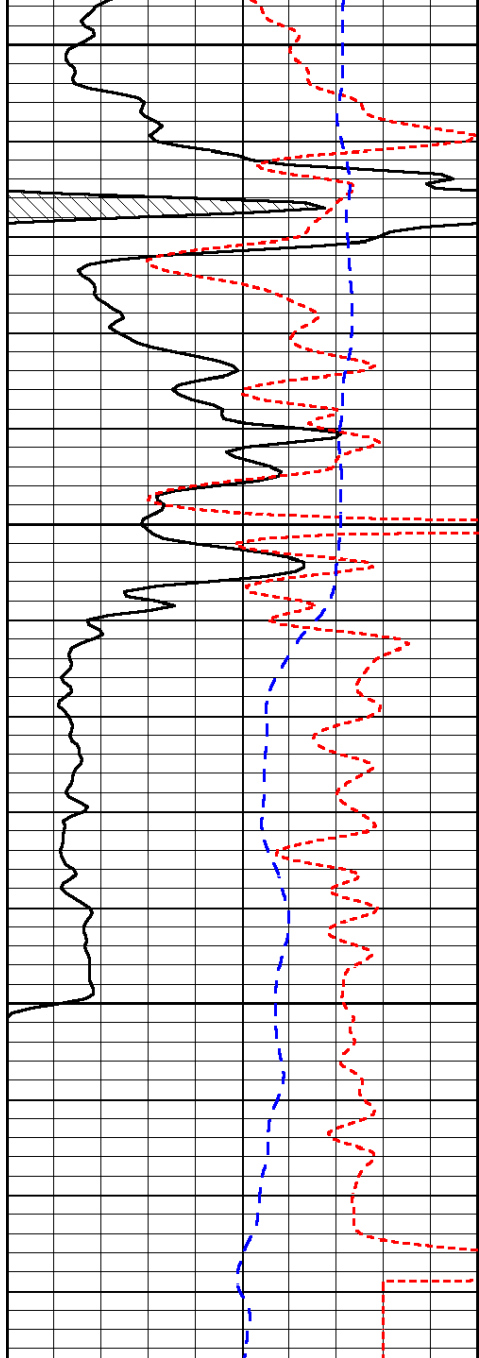


-28

-28

-28

-28

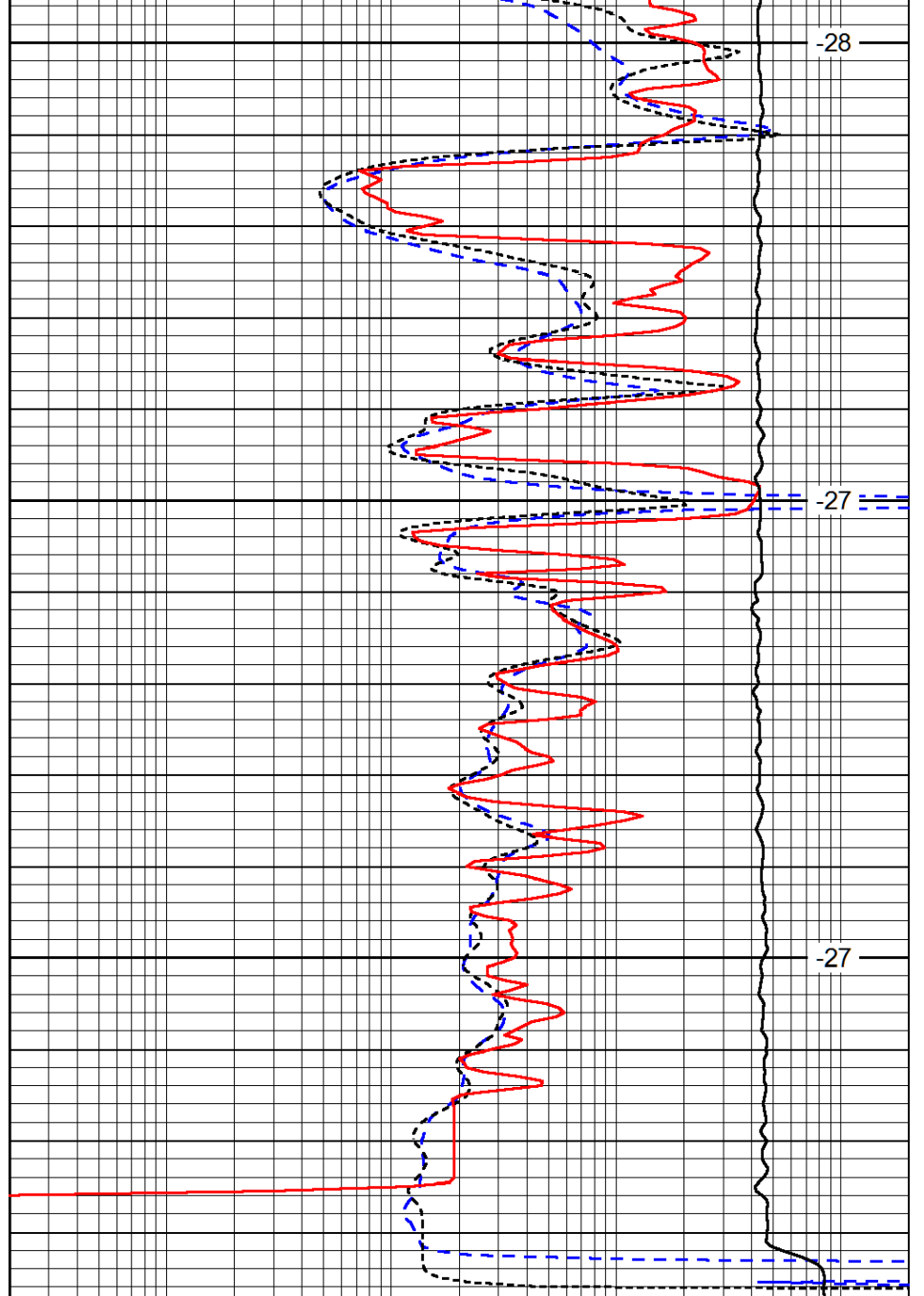


3350

3400

3450

0	Gamma Ray (GAPI)	150
-160	RXO/RT	40
-200	SP (mV)	0



-28

-27

-27

0.2	Deep Resistivity (Ohm-m)	2000
0.2	Medium Resistivity (Ohm-m)	2000
0.2	Shallow Resistivity (Ohm-m)	2000
10000	Line Tension (lb)	0

LSPD
(ft/min)