



Pioneer Energy Services

Dual Compensated Porosity Log

API No.	15-009-25945-00-00		
Company	Daystar Petroleum, Inc.		
Well	Denise #2-28		
Field	Trapp		
County	Barton		
Location	330' FSL & 1320' FWL		
State	Kansas		
Other Services	DILMEL		
Sec: 28	Twp: 16S	Rge: 13W	

Permanent Datum	Ground Level	Elevation 1954
Log Measured From	Kelly Bushing	13 Ft. Above Perm. Datum
Drilling Measured From	Kelly Bushing	
Date	2/12/2014	

Run Number	One
Type Log	CNL / CDL
Depth Driller	3483
Depth Logger	3482
Bottom Logged Interval	3452
Top Logged Interval	2950
Type Fluid In Hole	Chemical
Salinity, PPM CL	6000
Density	9.3
Level	Full
Max. Rec. Temp. F	113
Operating Rig Time	3 Hours
Equipment -- Location	91 Hays
Recorded By	D. Schmidt
Witnessed By	Jim Musgrove

Borehole Record				Casing Record			
Run No.	Bit	From	To	Size	Wgt.	From	To
One	12.25	00	919	8.625	23#	00	919
Two	7.875	919	TD				

<<< Fold Here >>>

All interpretations are opinions based on inferences from electrical or other measurements and we cannot and do not guarantee the accuracy or correctness of any interpretation, and we shall not, except in the case of gross or willful negligence on our part, be liable or responsible for any loss, costs, damages, or expenses incurred or sustained by anyone resulting from any interpretation made by any of our officers, agents or employees. These interpretations are also subject to our general terms and conditions set out in our current Price Schedule.

Comments

Thank you for using Log-Tech, Inc.
(785) 625-3858

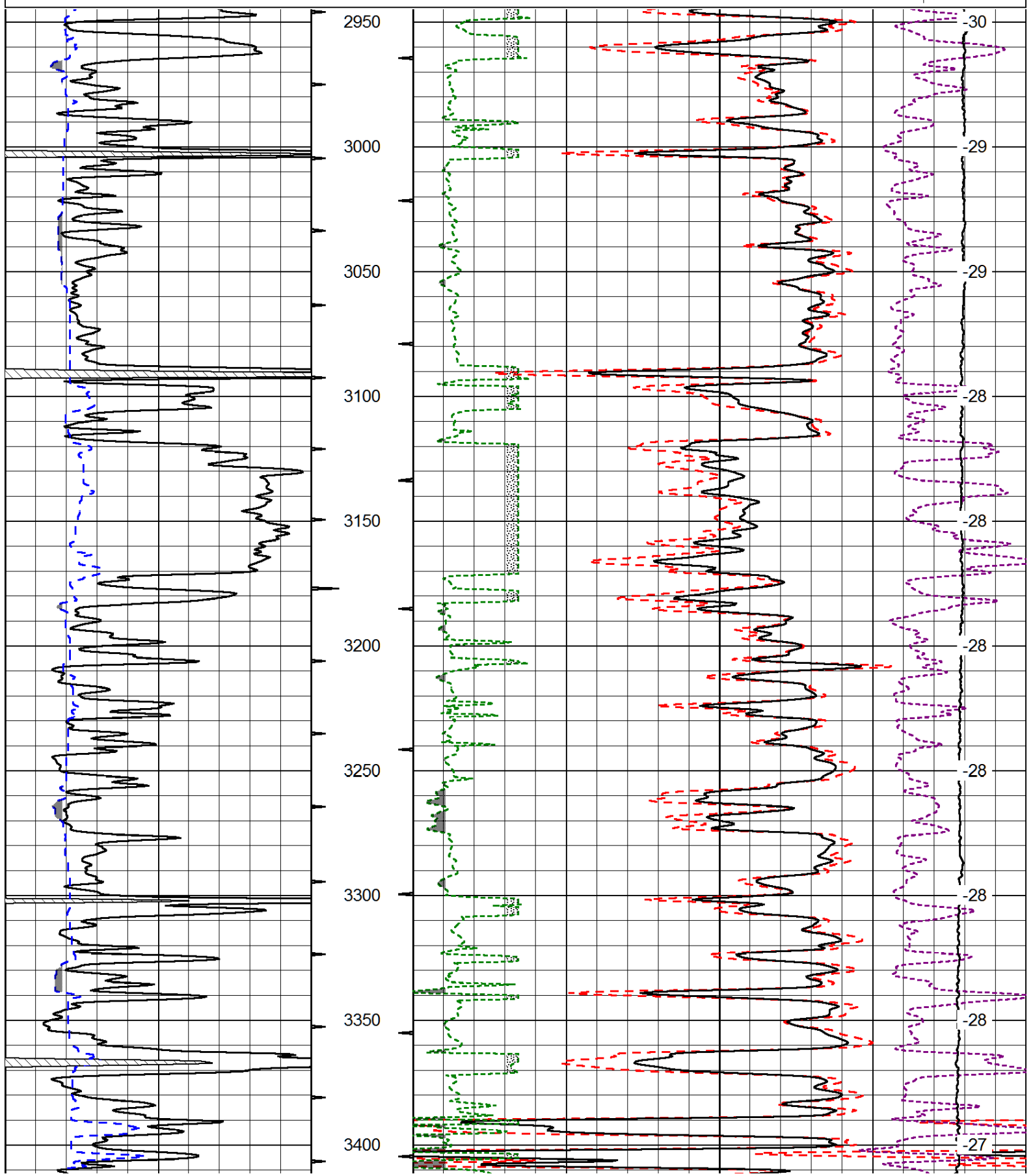
Susank,
1 South, 1/2 East,
North into

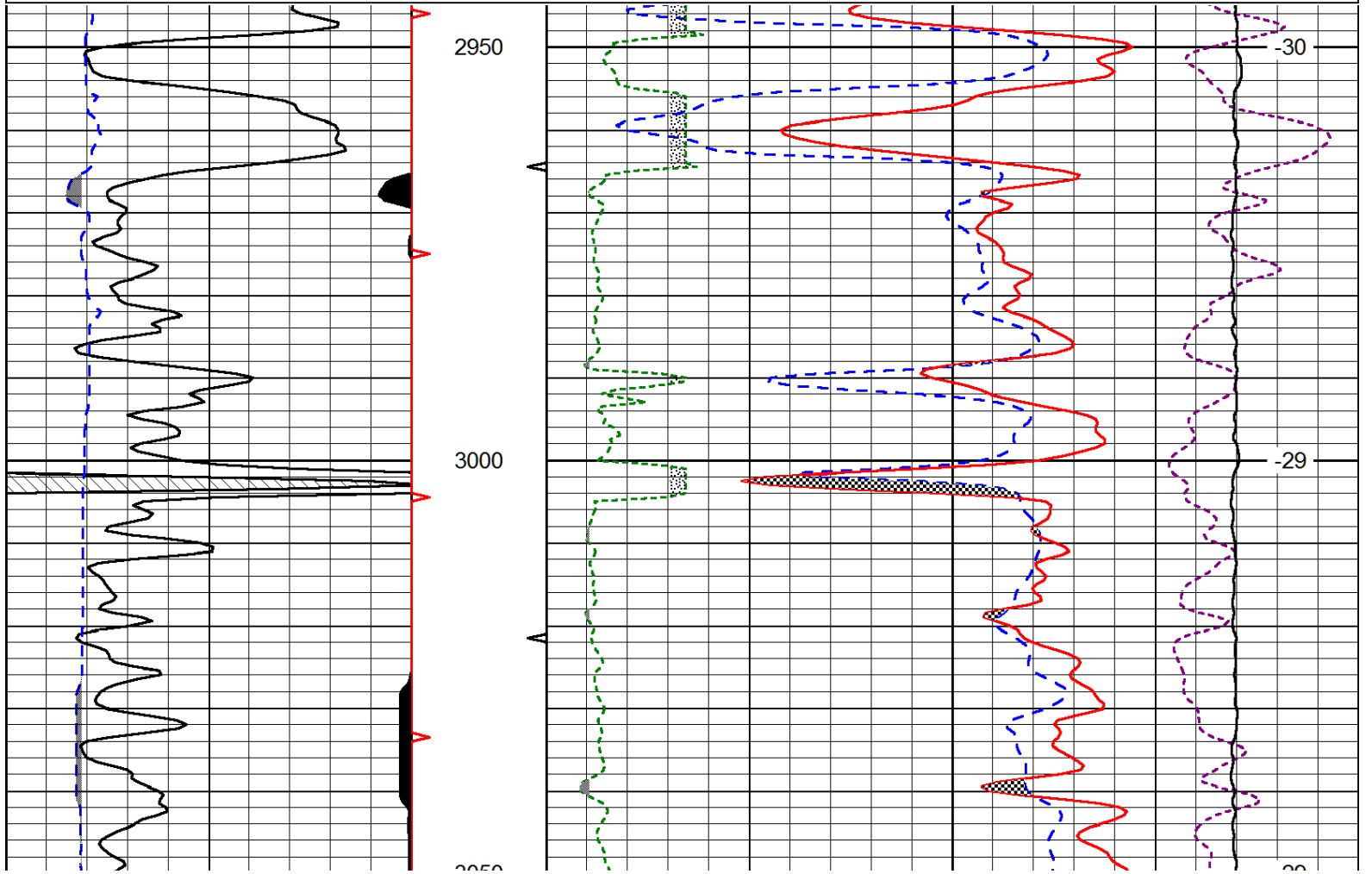
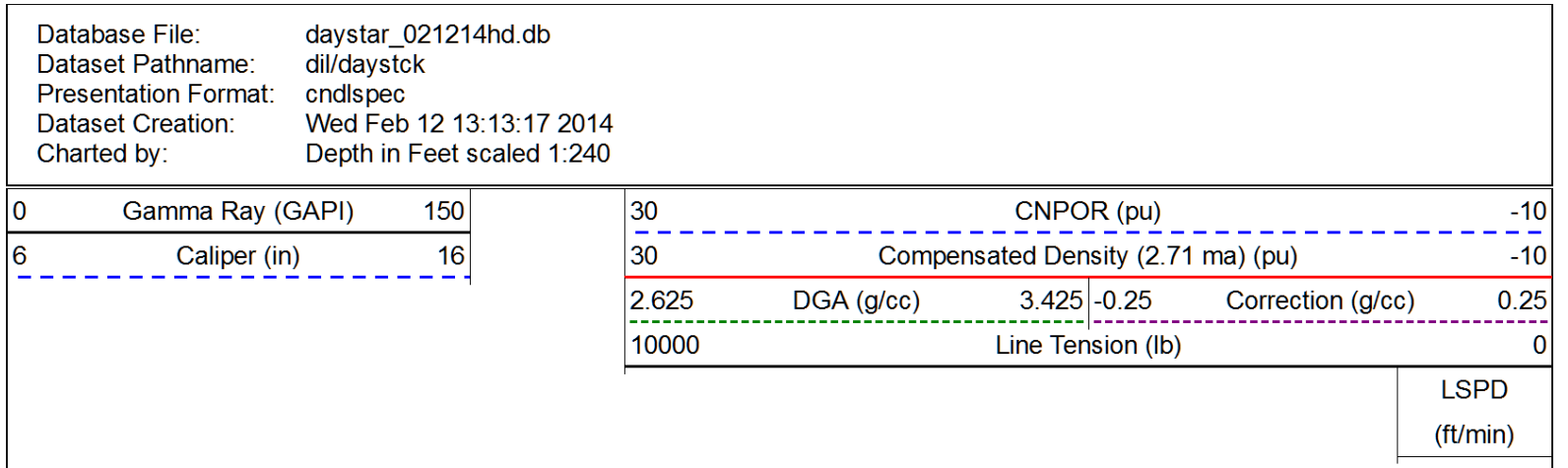
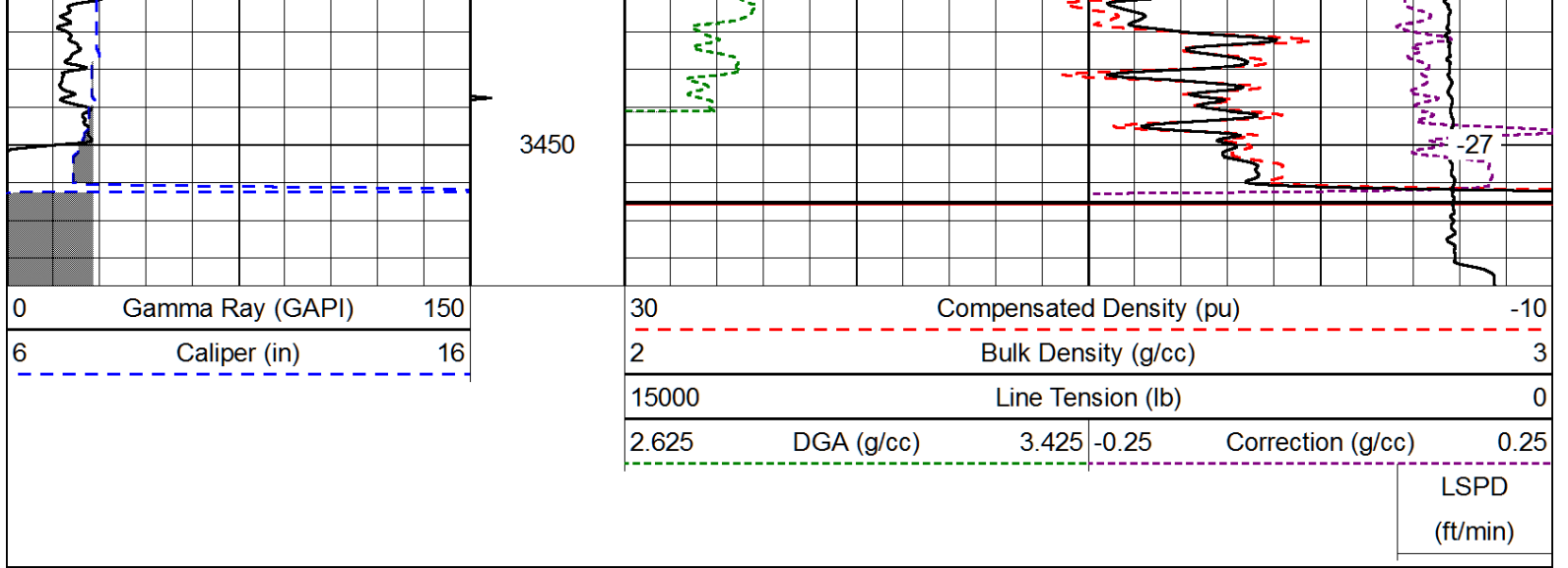
Database File: daystar_021214hd.db
 Dataset Pathname: dil/daystck
 Presentation Format: cdl
 Dataset Creation: Wed Feb 12 13:13:17 2014
 Charted by: Depth in Feet scaled 1:600

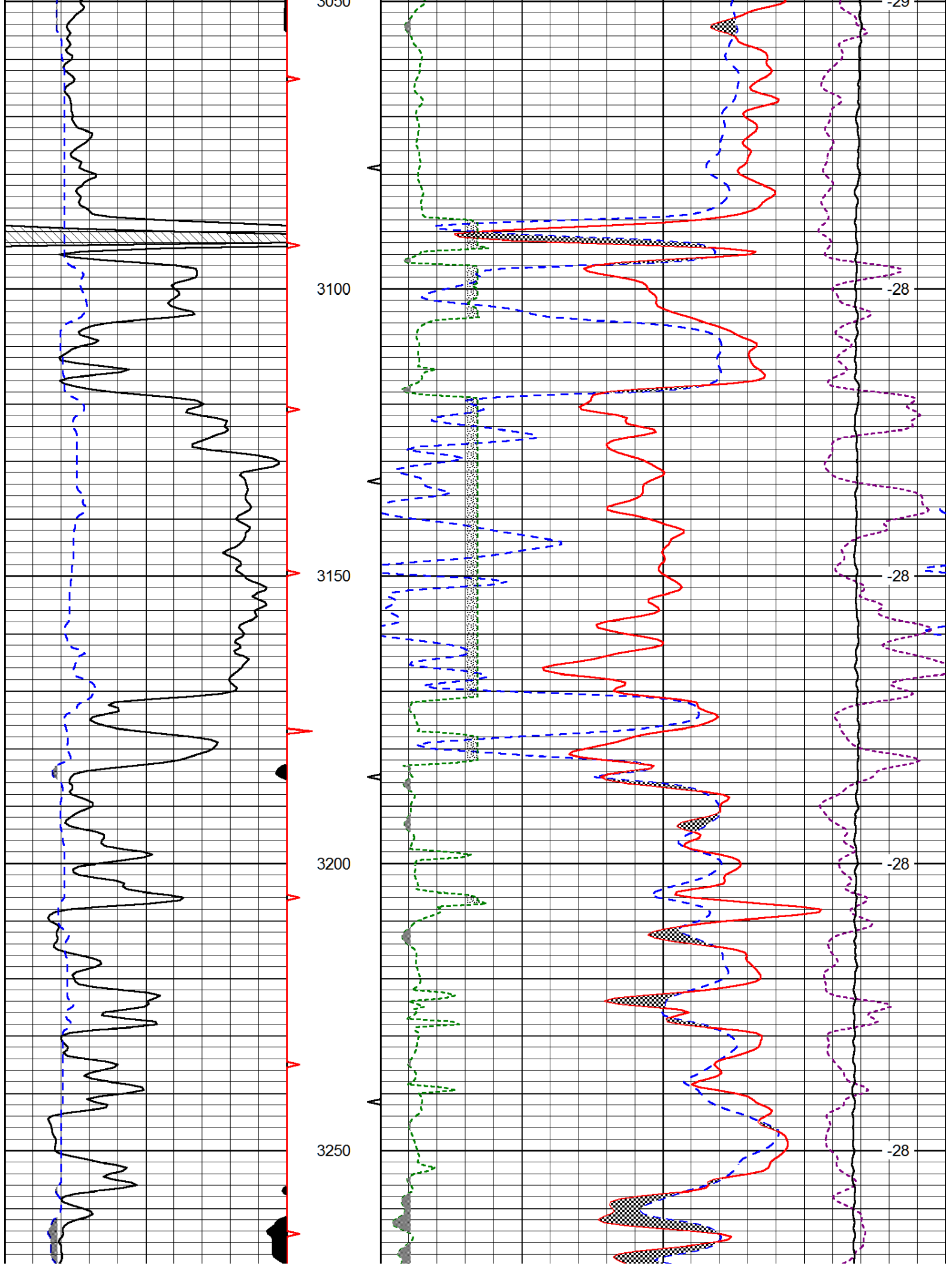
0	Gamma Ray (GAPI)	150
6	Caliper (in)	16

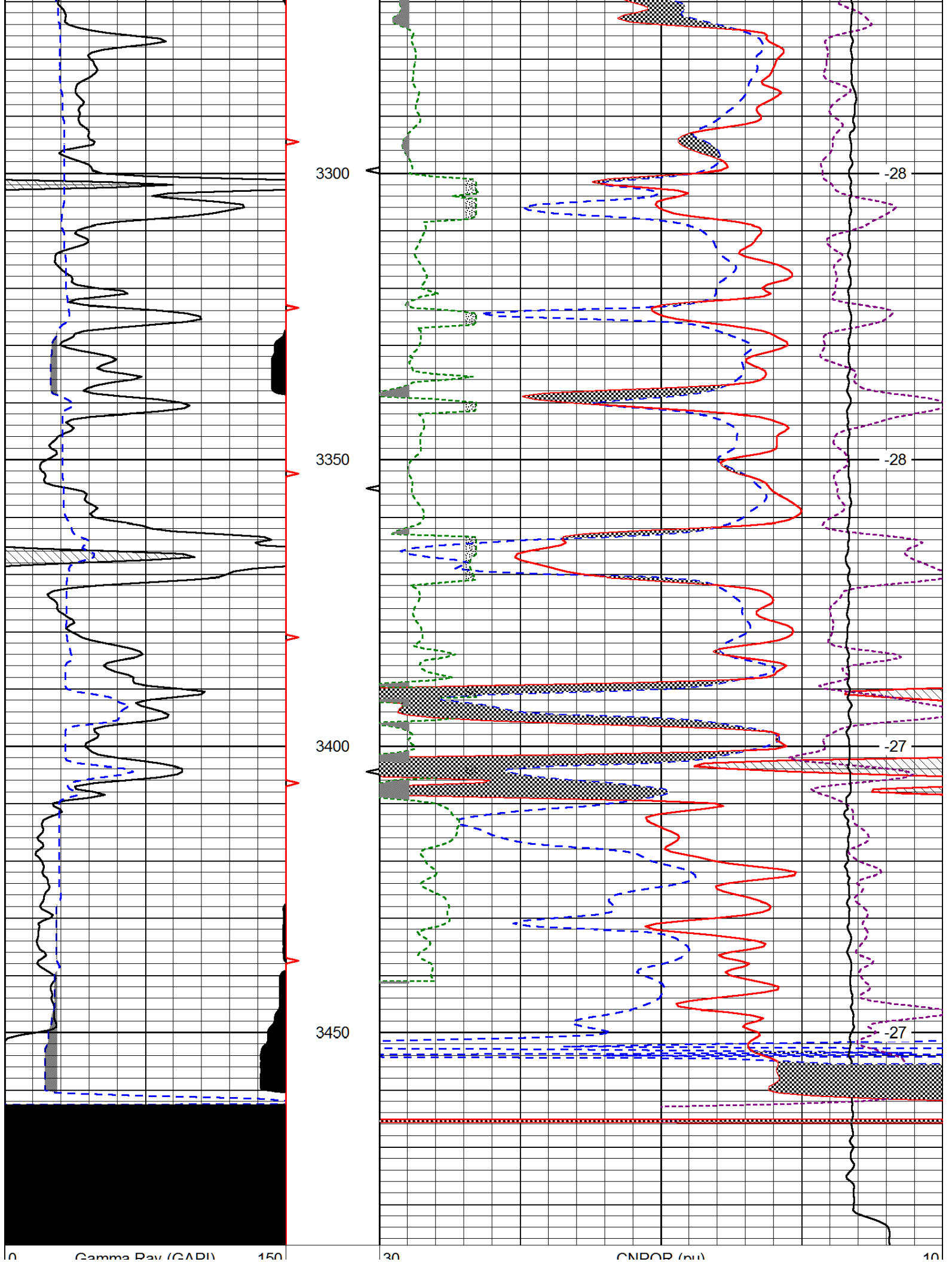
30	Compensated Density (pu)		-10
2	Bulk Density (g/cc)		3
15000	Line Tension (lb)		0
2.625	DGA (g/cc)	3.425	-0.25
			Correction (g/cc)
			0.25

LSPD
(ft/min)









6	Gamma Ray (GAR)	150
6	Caliper (in)	16

30	DNR OR (pu)			-10	
30	Compensated Density (2.71 ma) (pu)			-10	
2.625	DGA (g/cc)	3.425	-0.25	Correction (g/cc)	0.25
10000	Line Tension (lb)			0	
				LSPD (ft/min)	