



Pioneer Energy Services

Microresistivity Log

API No. 15-009-25945-00-00		Company Daystar Petroleum, Inc.		Other Services CNL/CDL DIL	
Well Denise #2-28		Field Trapp		Elevation	
County Barton		State Kansas		K.B. 1967 D.F. 1954 G.L. 1954	
Location 330' FSL & 1320' FWL		Sec: 28 Twp: 16S Rge: 13W		Elevation 1954	
Permanent Datum Ground Level		Log Measured From Kelly Bushing		Drilling Measured From Kelly Bushing	
Date 2/12/2014		Run Number One		Depth Driller 3483	
Depth Logger 3482		Bottom Logged Interval 3461		Top Log Interval 2950	
Casing Driller 8.625 @ 919		Casing Logger 918		Bit Size 7.875	
Type Fluid in Hole Chemical		Salinity, ppm CL 6000		Density / Viscosity 9.3 @ 61	
pH / Fluid Loss 9.5 @ 9.2		Source of Sample Flowline		Rm @ Meas. Temp 0.52 @ 38	
Rmf @ Meas. Temp 0.39 @ 38		Rmc @ Meas. Temp 0.70 @ 38		Source of Rmf / Rmc Charts	
Rm @ BHT 0.18 @ 113		Operating Rig Time 3 Hours		Max Rec. Temp. F 113	
Equipment Number 91		Location Hays		Recorded By D. Schmidt	
Witnessed By Jim Musgrove		Clint Musgrove			

<<< Fold Here >>>

All interpretations are opinions based on inferences from electrical or other measurements and we cannot and do not guarantee the accuracy or correctness of any interpretation, and we shall not, except in the case of gross or willful negligence on our part, be liable or responsible for any loss, costs, damages, or expenses incurred or sustained by anyone resulting from any interpretation made by any of our officers, agents or employees. These interpretations are also subject to our general terms and conditions set out in our current Price Schedule.

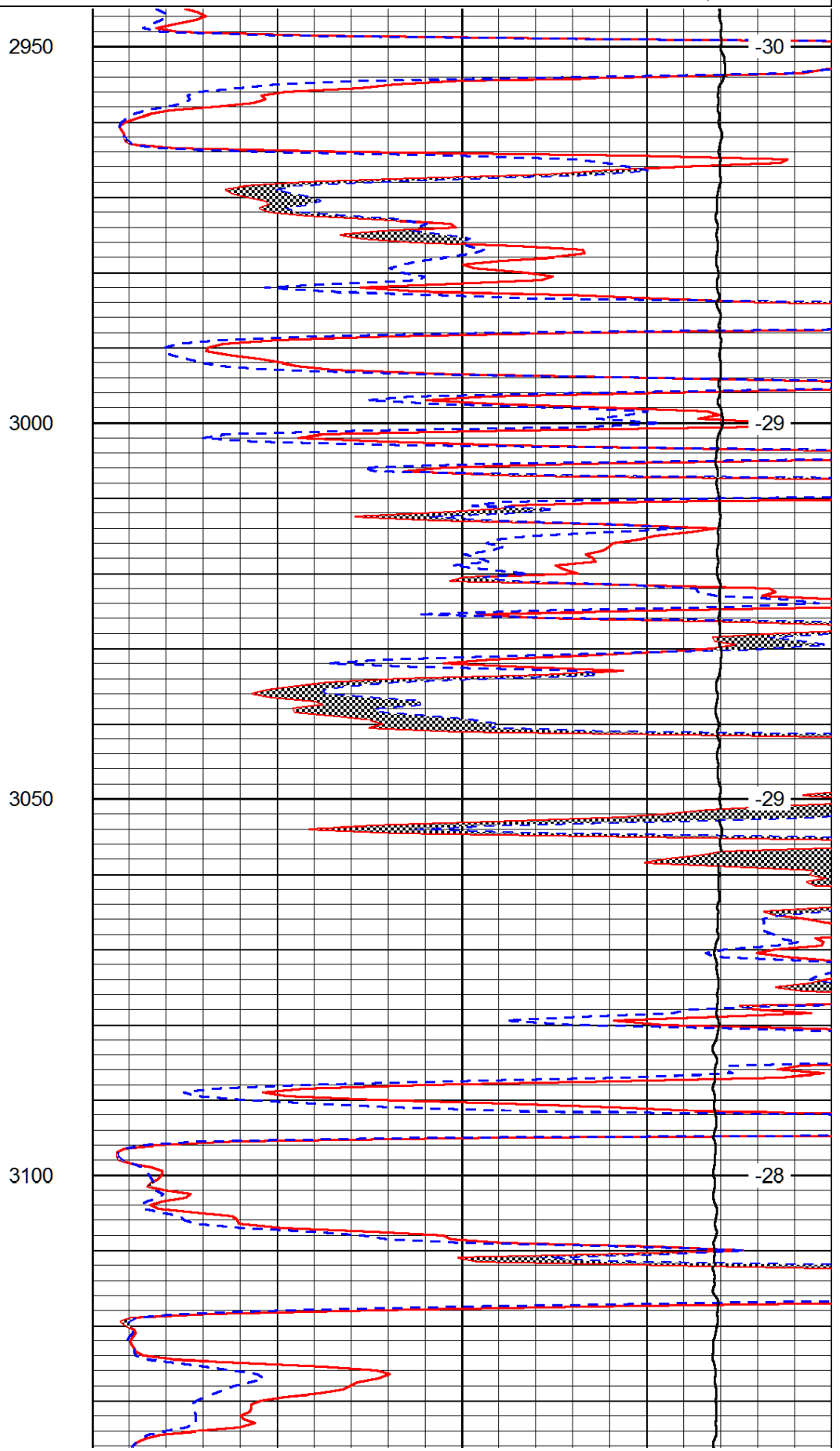
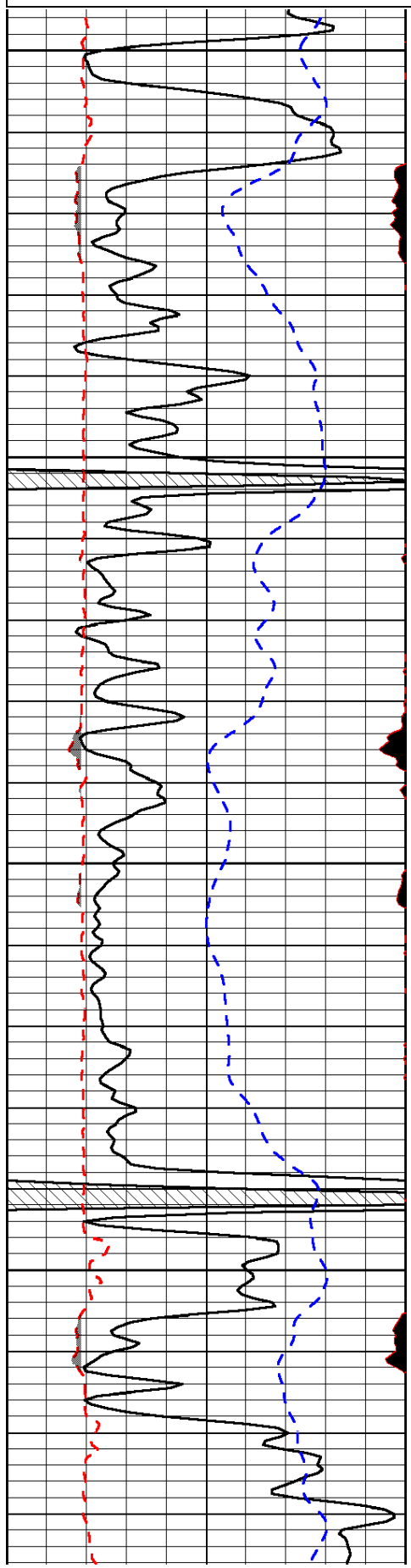
Comments

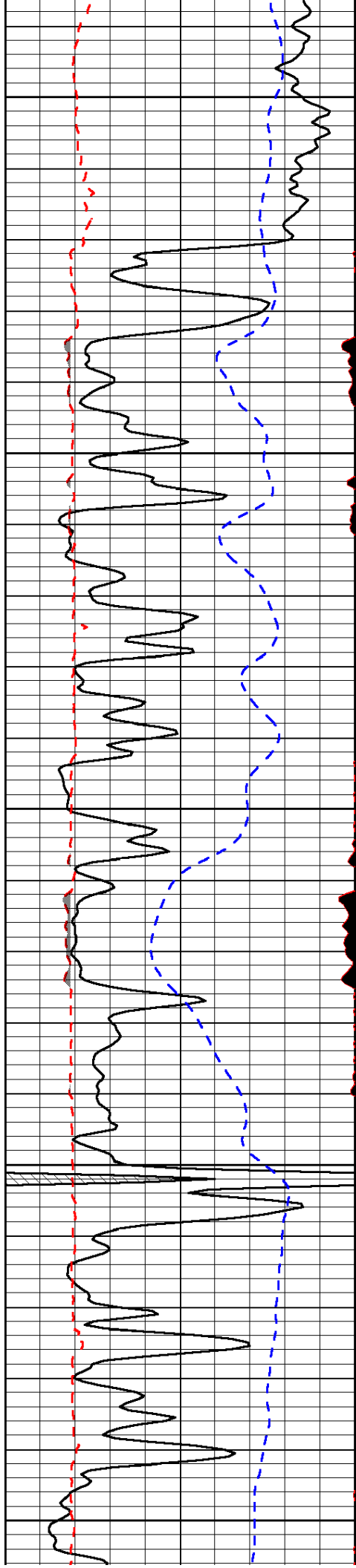
Thank you for using Log-Tech, Inc.
 (785) 625-3858
 Susank,
 1 South, 1/2 East,
 North into

Database File: daystar_021214hd.db
 Dataset Pathname: dil/daystck
 Presentation Format: micro
 Dataset Creation: Wed Feb 12 13:13:17 2014
 Charted by: Depth in Feet scaled 1:240

0	Gamma Ray (GAPI)	150
6	MCAL (in)	16
2.875	Mud Cake (in)	7.875
-200	SP (mV)	0

0	Micro Inverse 1 X 1 (Ohm-m)	40
0	Micro Normal 2" (Ohm-m)	40
10000	Line Weight (lb)	0
	LSPD (ft/min)	





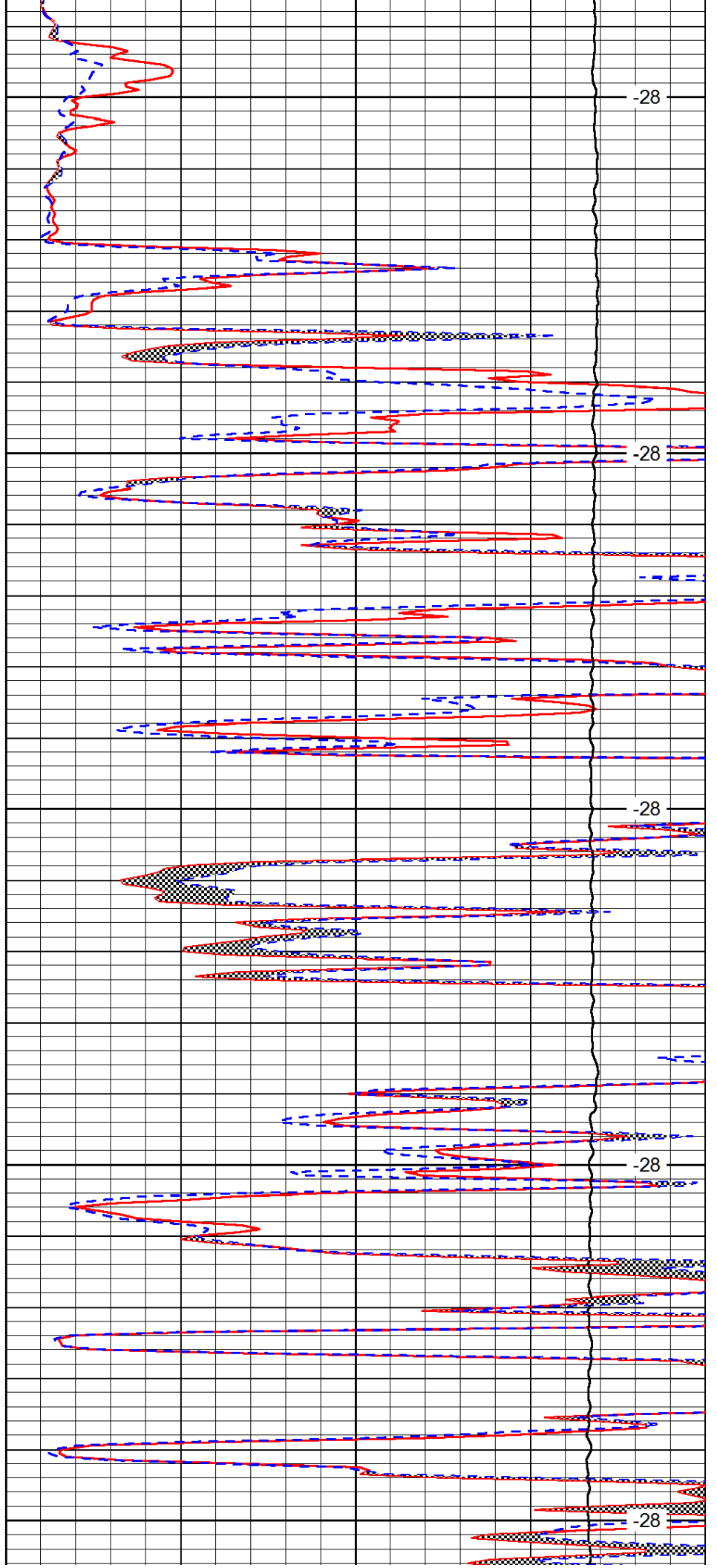
3150

3200

3250

3300

3350



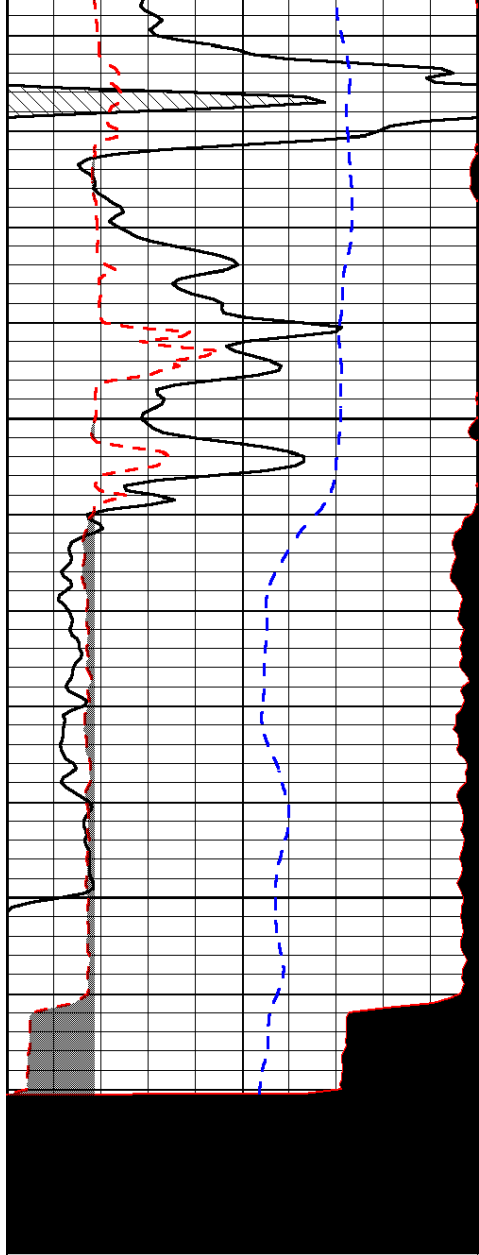
-28

-28

-28

-28

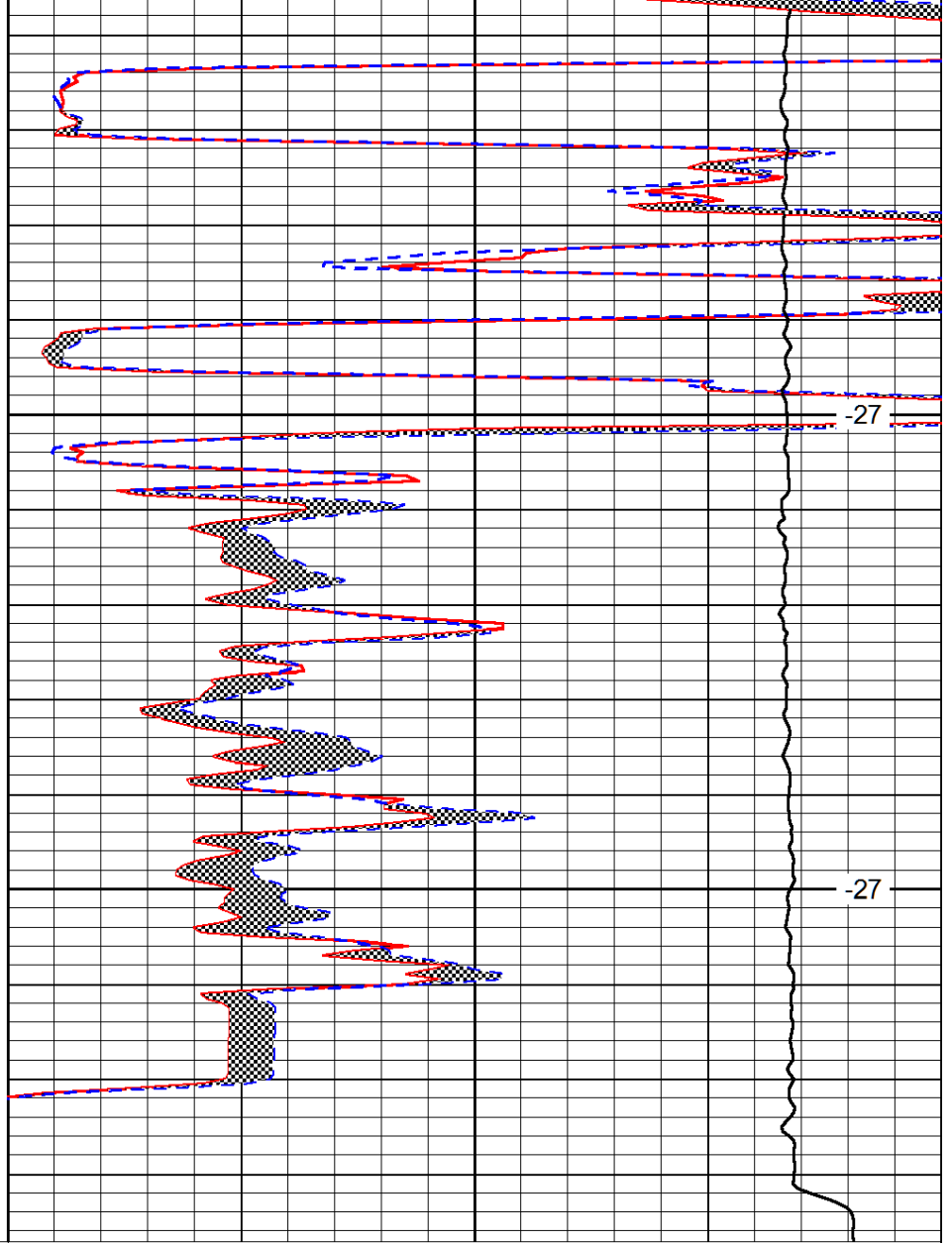
-28



0	Gamma Ray (GAPI)	150
6	MCAL (in)	16
2.875	Mud Cake (in)	7.875
-200	SP (mV)	0

3400

3450



0	Micro Inverse 1 X 1 (Ohm-m)	40
0	Micro Normal 2" (Ohm-m)	40
10000	Line Weight (lb)	0

LSPD
(ft/min)