



Pioneer Energy Services

Microresistivity Log

15-065-24,073-00-00

API No.

Company **Jason Oil Company, LLC**

Well **TEEL No. 5**

Field **NANA Northwest**

County **Graham** State **Kansas**

Location **NE-NW-NE-NE
90' FNL & 940' FEL**

Sec: **5** Twp: **8S** Rge: **24W**

Permanent Datum **Ground Level** Elevation **2388**

Log Measured From **Kelly Bushing** 5 Ft. Above Perm. Datum

Drilling Measured From **Kelly Bushing**

Other Services
RAG

Elevation
K.B. 2393
D.F. 2388
G.L. 2388

Date **11/4/14**

Run Number **Two**

Depth Driller **3930**

Depth Logger **3928**

Bottom Logged Interval **3927**

Top Log Interval **3300**

Casing Driller **8.625 @ 263**

Casing Logger **259**

Bit Size **7.875**

Type Fluid in Hole **Chemical**

Salinity, ppm CL **800**

Density / Viscosity **9.5 53**

pH / Fluid Loss **9.0 8.8**

Source of Sample **Flowline**

Rm @ Meas. Temp **.93 @ 53**

Rmf @ Meas. Temp **.70 @ 53**

Rmc @ Meas. Temp **1.26 @ 53**

Source of Rmf / Rmc **Charts**

Rm @ BHT **.43 @ 115**

Operating Rig Time **3 Hours**

Max Rec. Temp. F **115**

Equipment Number **108**

Location **Hays**

Recorded By **J. Henrickson**

Witnessed By **Jeff Lawler**

<<< Fold Here >>>

All interpretations are opinions based on inferences from electrical or other measurements and we cannot and do not guarantee the accuracy or correctness of any interpretation, and we shall not, except in the case of gross or willful negligence on our part, be liable or responsible for any loss, costs, damages, or expenses incurred or sustained by anyone resulting from any interpretation made by any of our officers, agents or employees. These interpretations are also subject to our general terms and conditions set out in our current Price Schedule.

Comments

Thank you for using Log-Tech, Inc.
(785) 625-3858

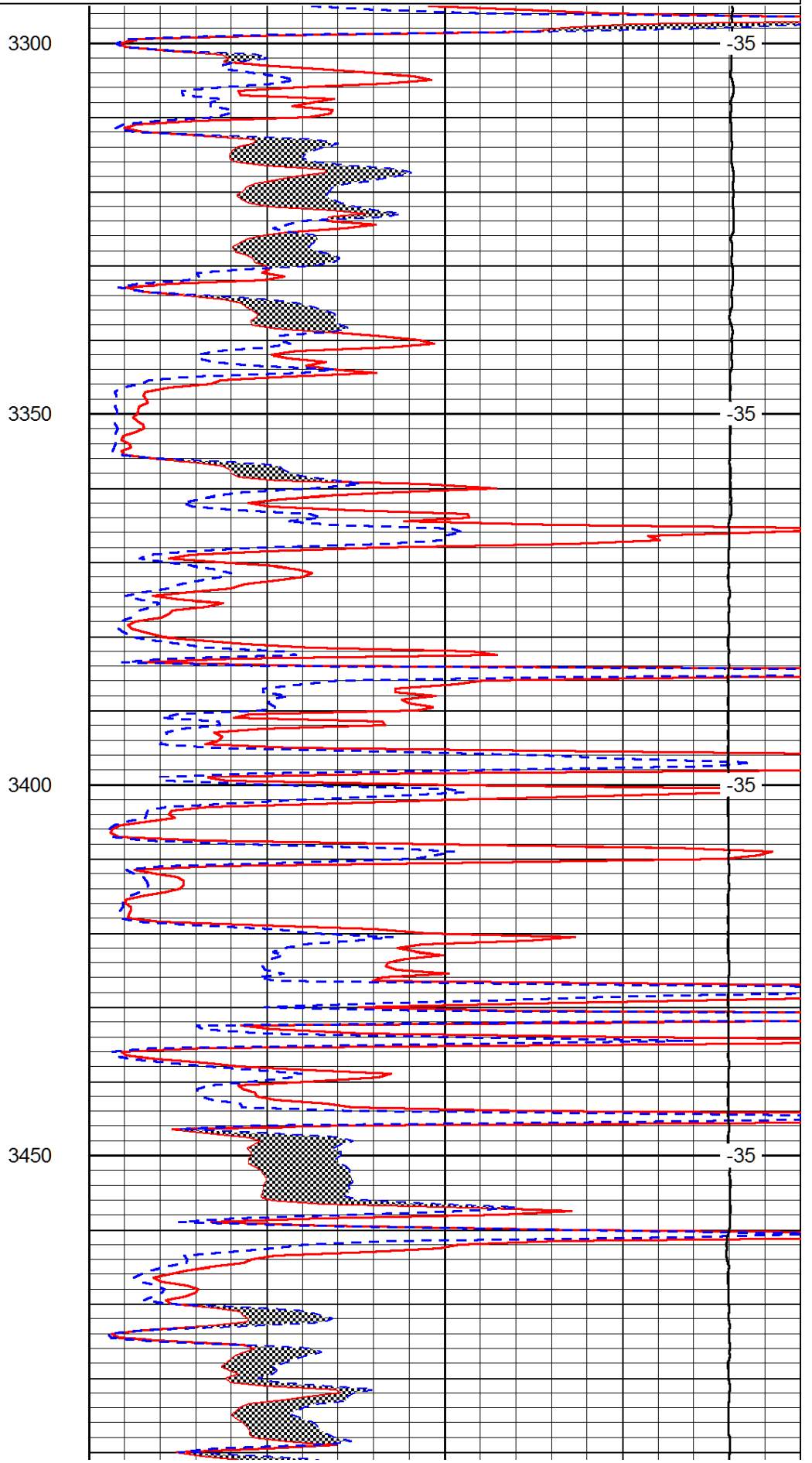
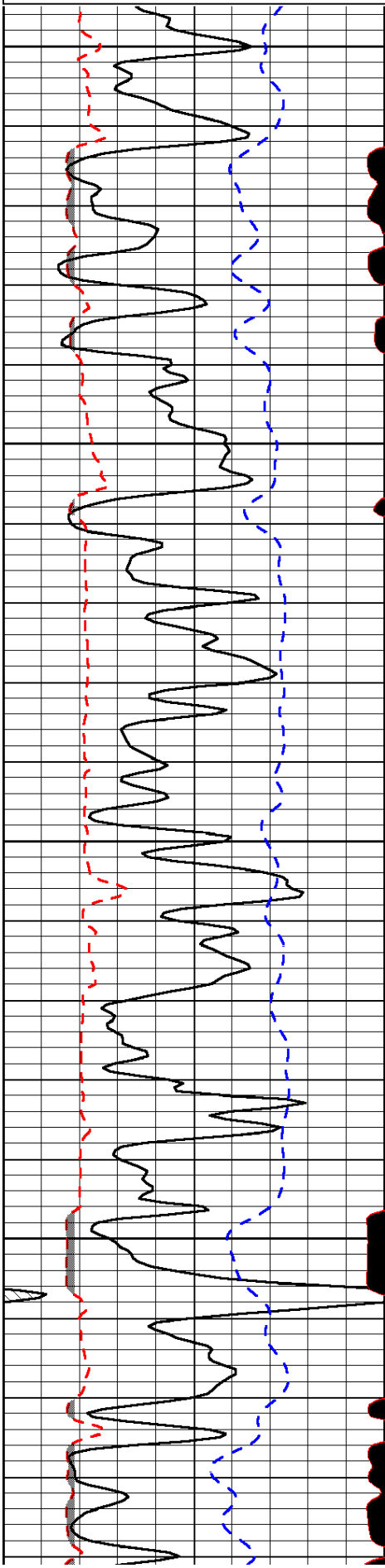
Penokee Kansas
1 West, 2 North, 1 West, South Into at Tank Batteries

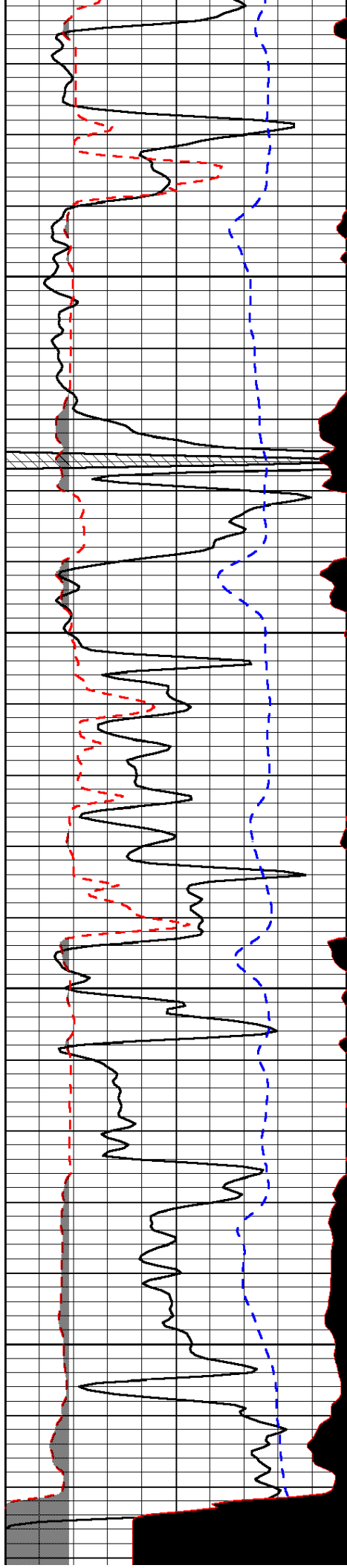
Database File: jason_oil_teel_5hd.db
Dataset Pathname: rag/jasrag
Presentation Format: micro
Dataset Creation: Tue Nov 04 06:31:08 2014
Charted by: Depth in Feet scaled 1:240

0	Gamma Ray	150
6	MCAL (GAPI)	16
2.875	Mud Cake (GAPI)	7.875
-200	SP (mV)	0

0	Micro Inverse 1 X 1	40
0	Micro Normal 2"	40
10000	Line Weight	0

LSPD



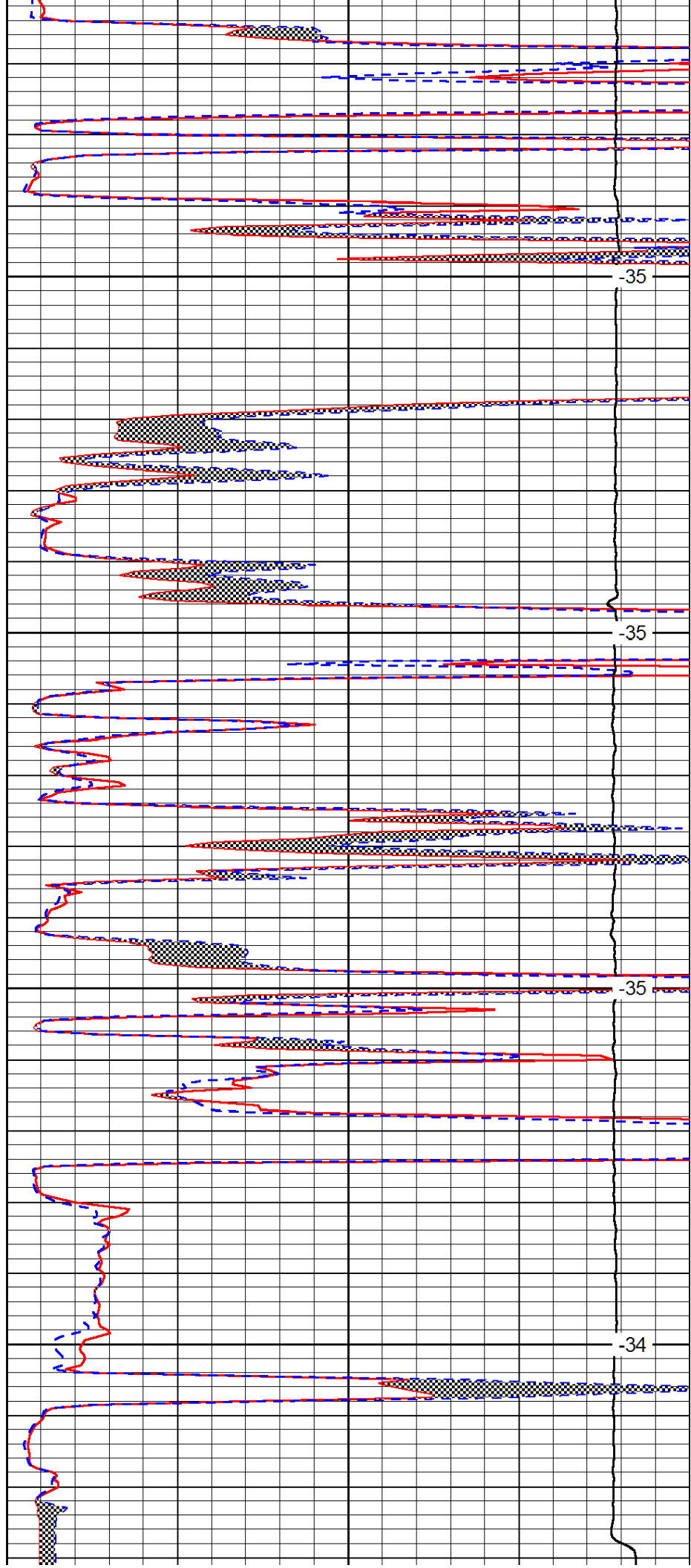


3750

3800

3850

3900



-35

-35

-35

-34

0	Gamma Ray	150
6	MCAL (GAPI)	16
2.875	Mud Cake (GAPI)	7.875
-200	SP (mV)	0

0	Micro Inverse 1 X 1	40
0	Micro Normal 2"	40
10000	Line Weight	0
		LSPD