



Pioneer Energy Services

Radiation Guard Log

15-065-24,073-00-00

Company **Jason Oil Company, LLC**
 Well **TEEL No. 5**
 Field **NANA Northwest**
 County **Graham** State **Kansas**

Location **NE-NW-NE-NE
90' FNL & 940' FEL**
 Sec: **5** Twp: **8S** Rge: **24W**

Other Services
MEL

Permanent Datum **Ground Level** Elevation **2388**
 Log Measured From **Kelly Bushing** 5 Ft. Above Perm. Datum
 Drilling Measured From **Kelly Bushing**
 Elevation **K.B. 2393**
D.F. G.L. 2388

Date	11/4/14
Run Number	One
Depth Driller	3930
Depth Logger	3928
Bottom Logged Interval	3927
Top Log Interval	250
Casing Driller	8.625 @ 263
Casing Logger	259
Bit Size	7.875
Type Fluid In Hole	Chemical
Salinity, ppm CL	800
Density / Viscosity	9.5 53
pH / Fluid Loss	9.0 8.8
Source of Sample	Flowline
Rm @ Meas. Temp	.93 @ 53
Rmf @ Meas. Temp	.70 @ 53
Rmc @ Meas. Temp	1.26 @ 53
Source of Rmf / Rmc	Charts
Rm @ BHT	.43 @ 115
Operating Rig Time	3 Hours
Max Rec. Temp. F	115
Equipment Number	108
Location	Hays
Recorded By	J. Henrickson
Witnessed By	Jeff Lawler

<<< Fold Here >>>

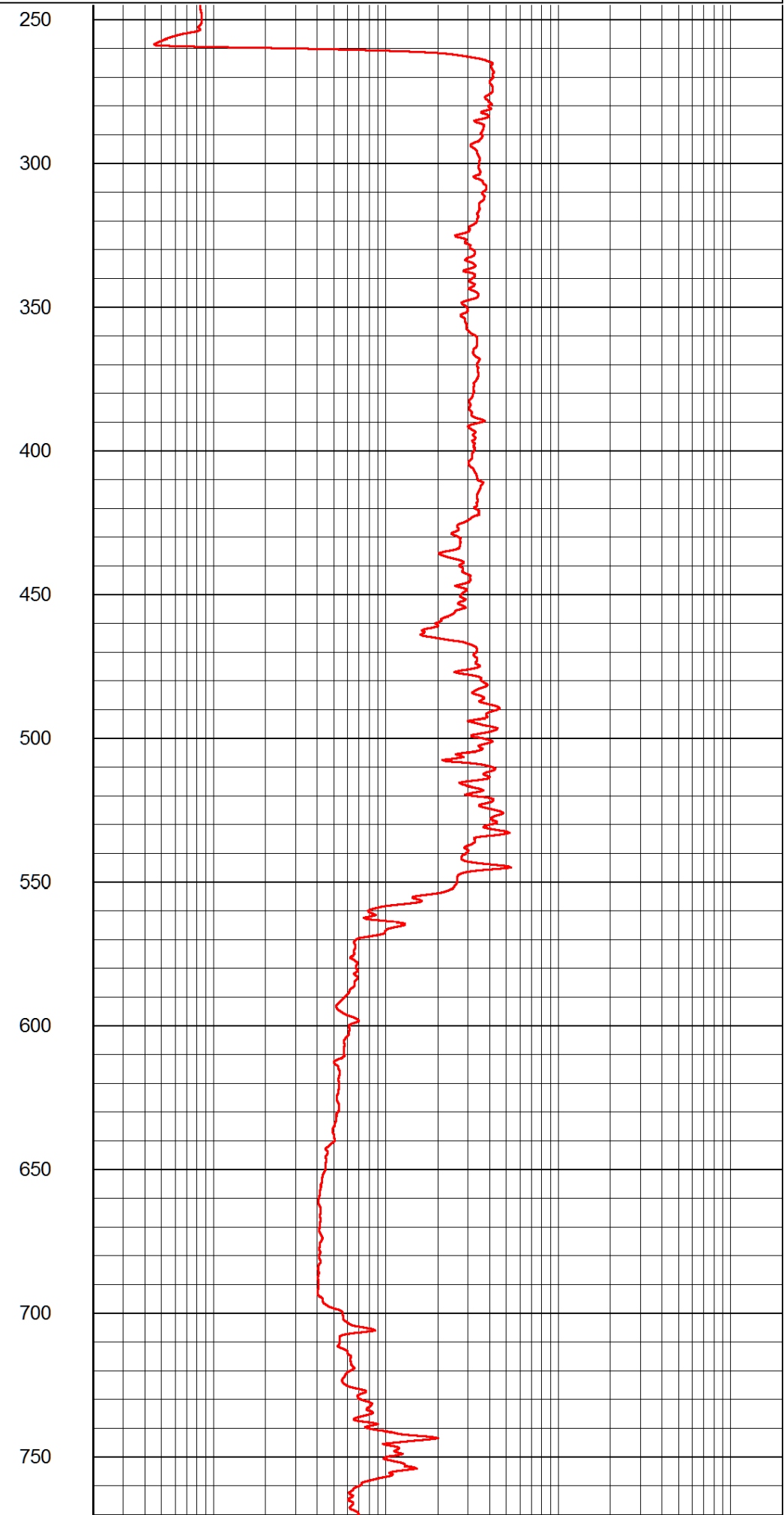
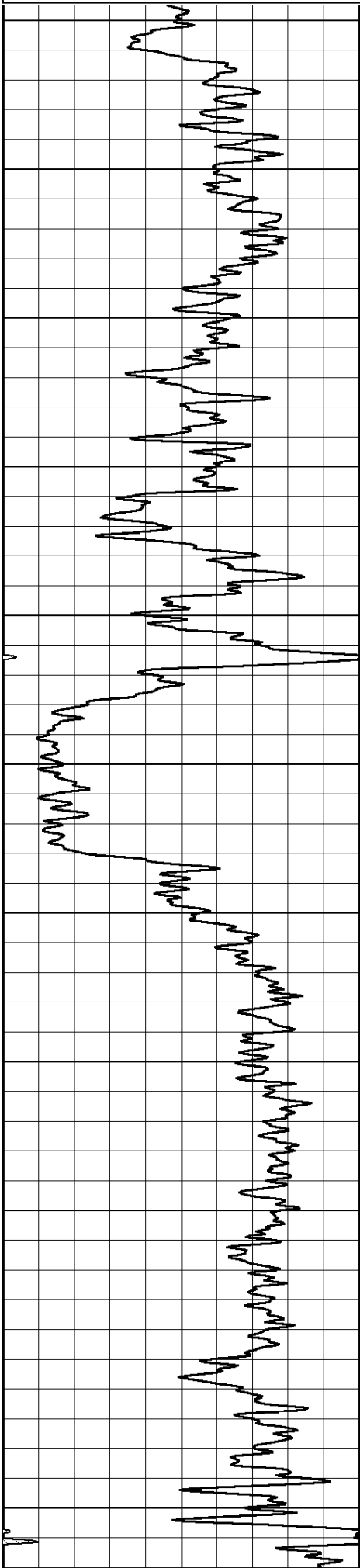
All interpretations are opinions based on inferences from electrical or other measurements and we cannot and do not guarantee the accuracy or correctness of any interpretation, and we shall not, except in the case of gross or willful negligence on our part, be liable or responsible for any loss, costs, damages, or expenses incurred or sustained by anyone resulting from any interpretation made by any of our officers, agents or employees. These interpretations are also subject to our general terms and conditions set out in our current Price Schedule.

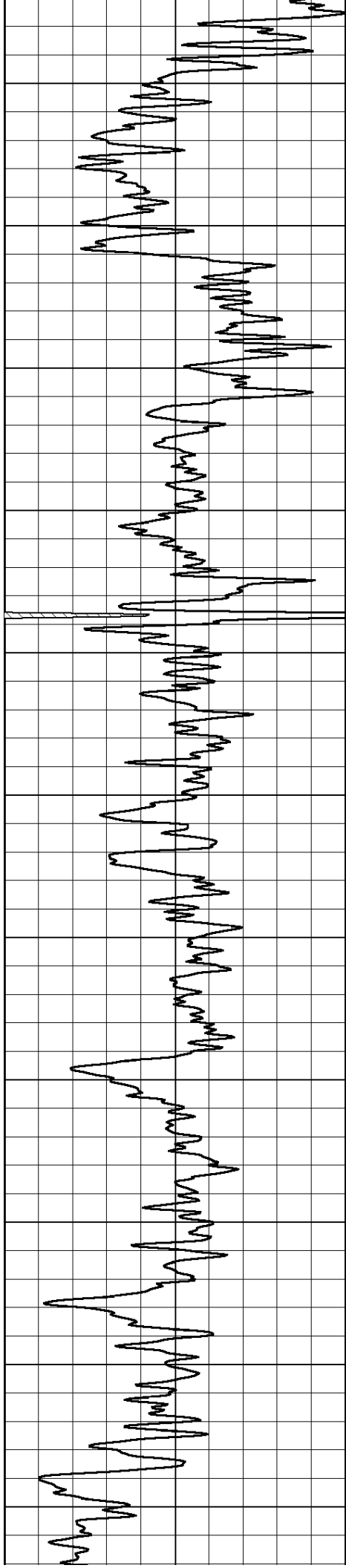
Comments

Thank you for using Log-Tech, Inc.
 (785) 625-3858

 Penokee Kansas
 1 West, 2 North, 1 West, South Into at Tank Batteries

Database File: jason_oil_teel_5hd.db
 Dataset Pathname: rag/jasrag
 Presentation Format: rag2in
 Dataset Creation: Tue Nov 04 06:31:08 2014
 Charted by: Depth in Feet scaled 1:600





800

850

900

950

1000

1050

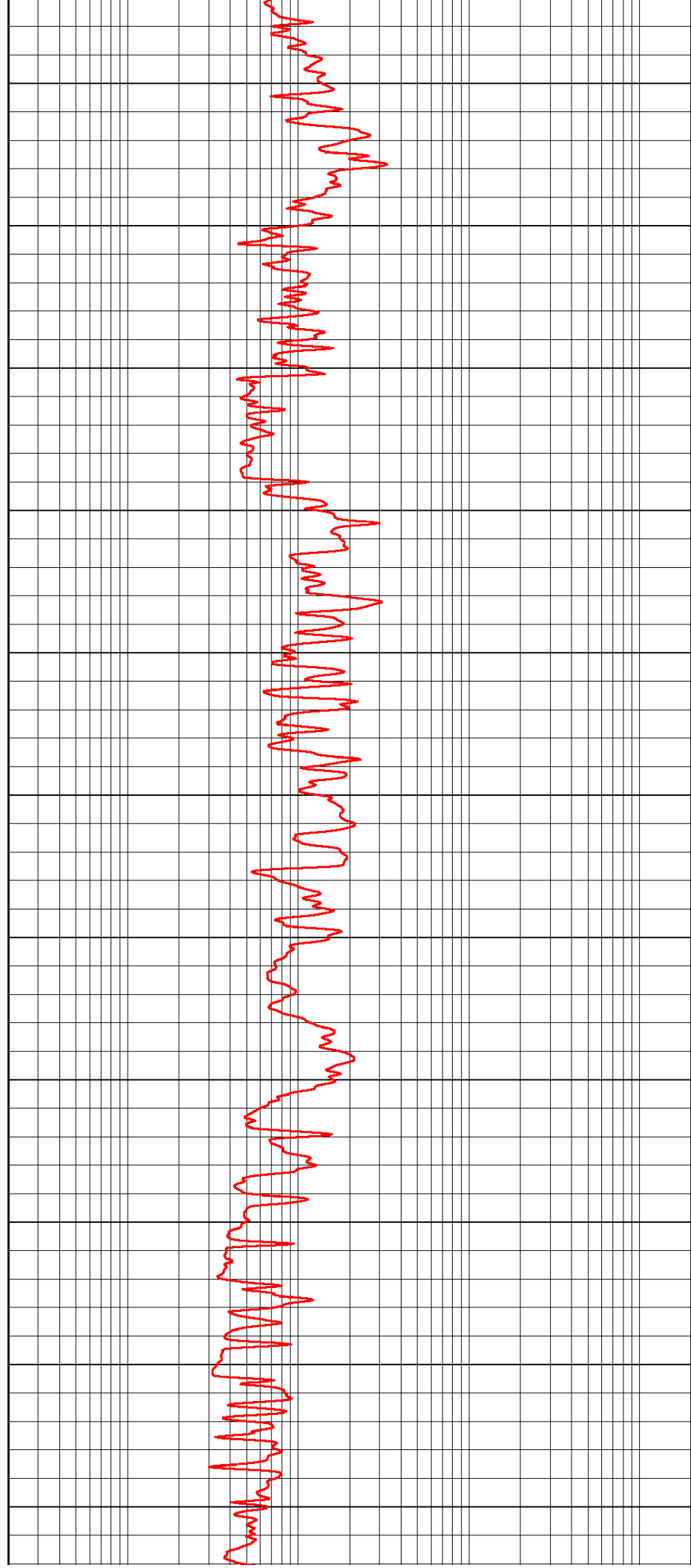
1100

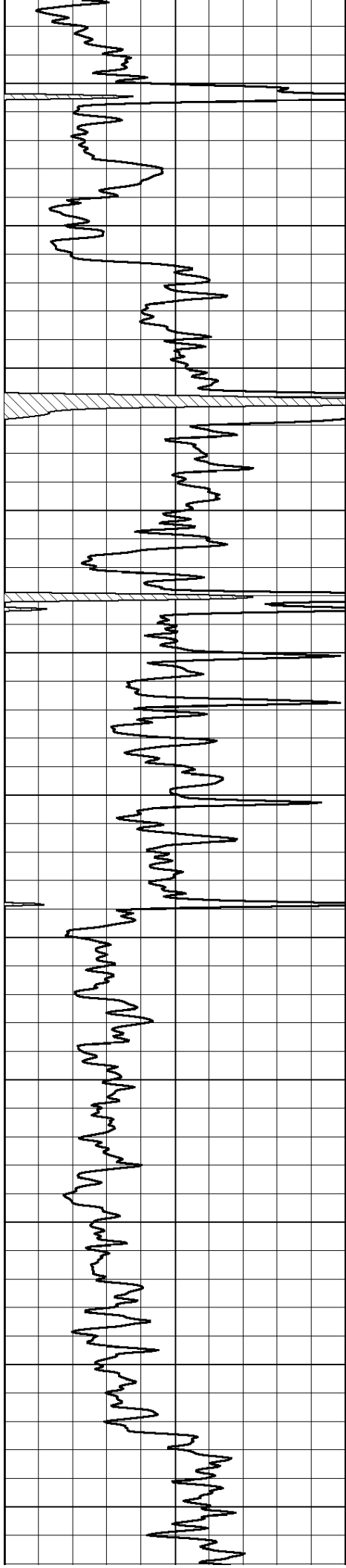
1150

1200

1250

1300





1350

1400

1450

1500

1550

1600

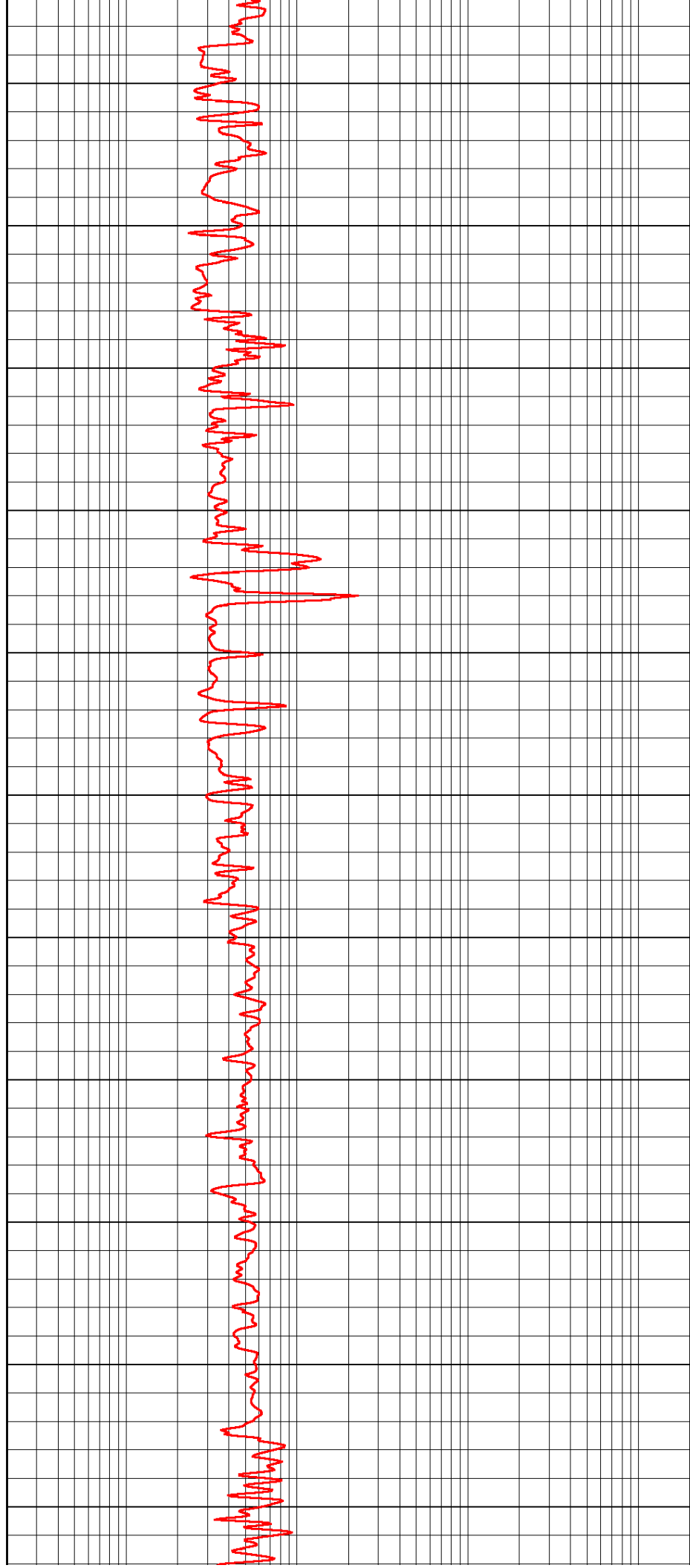
1650

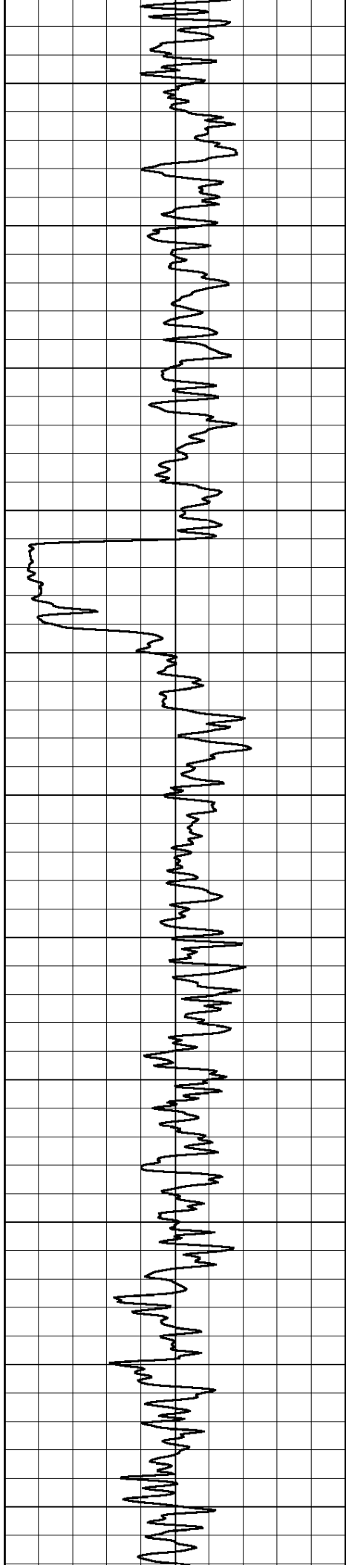
1700

1750

1800

1850





1900

1950

2000

2050

2100

2150

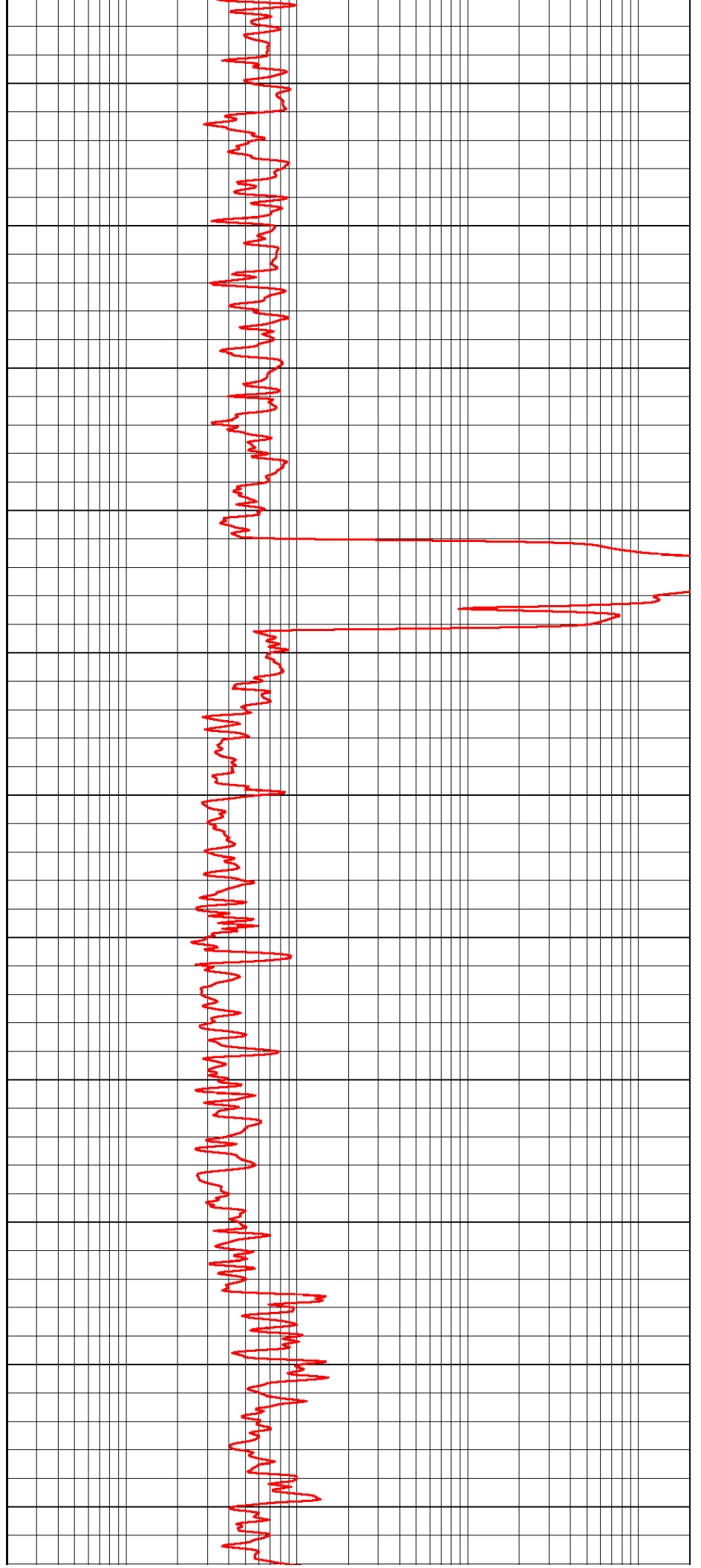
2200

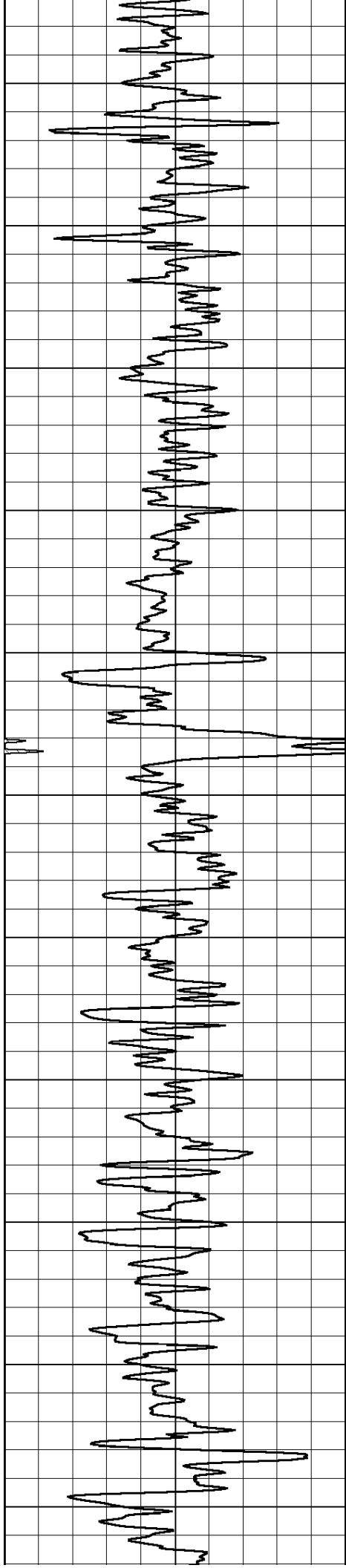
2250

2300

2350

2400





2450

2500

2550

2600

2650

2700

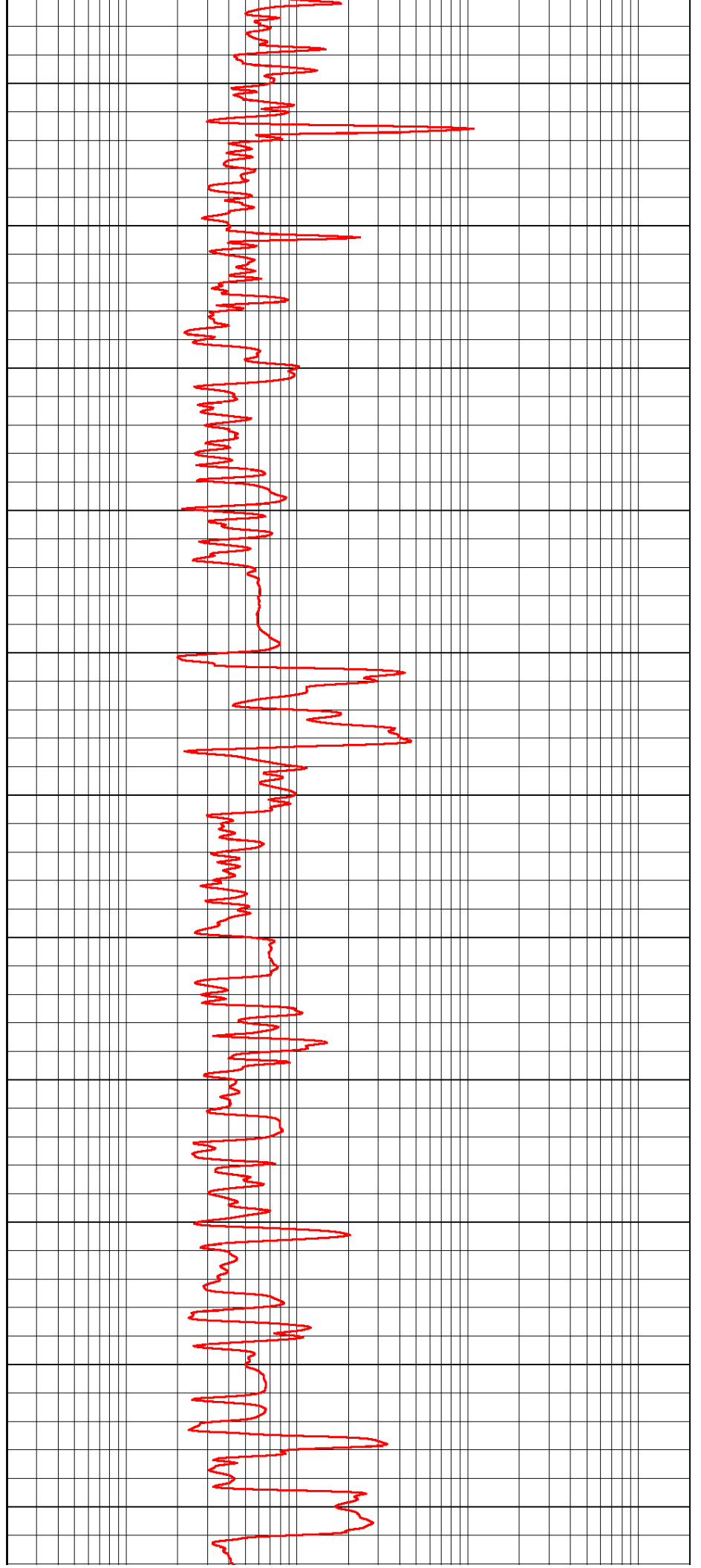
2750

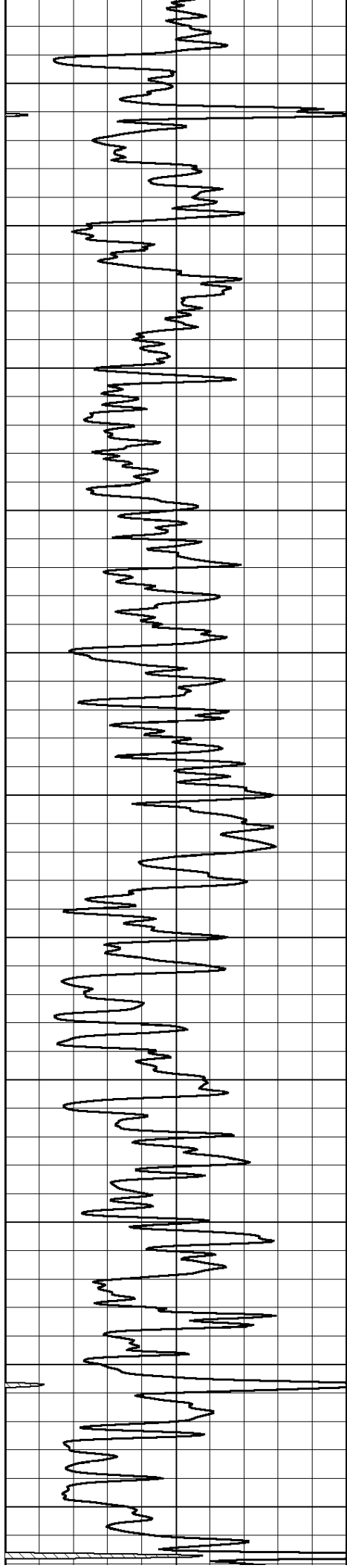
2800

2850

2900

2950





3000

3050

3100

3150

3200

3250

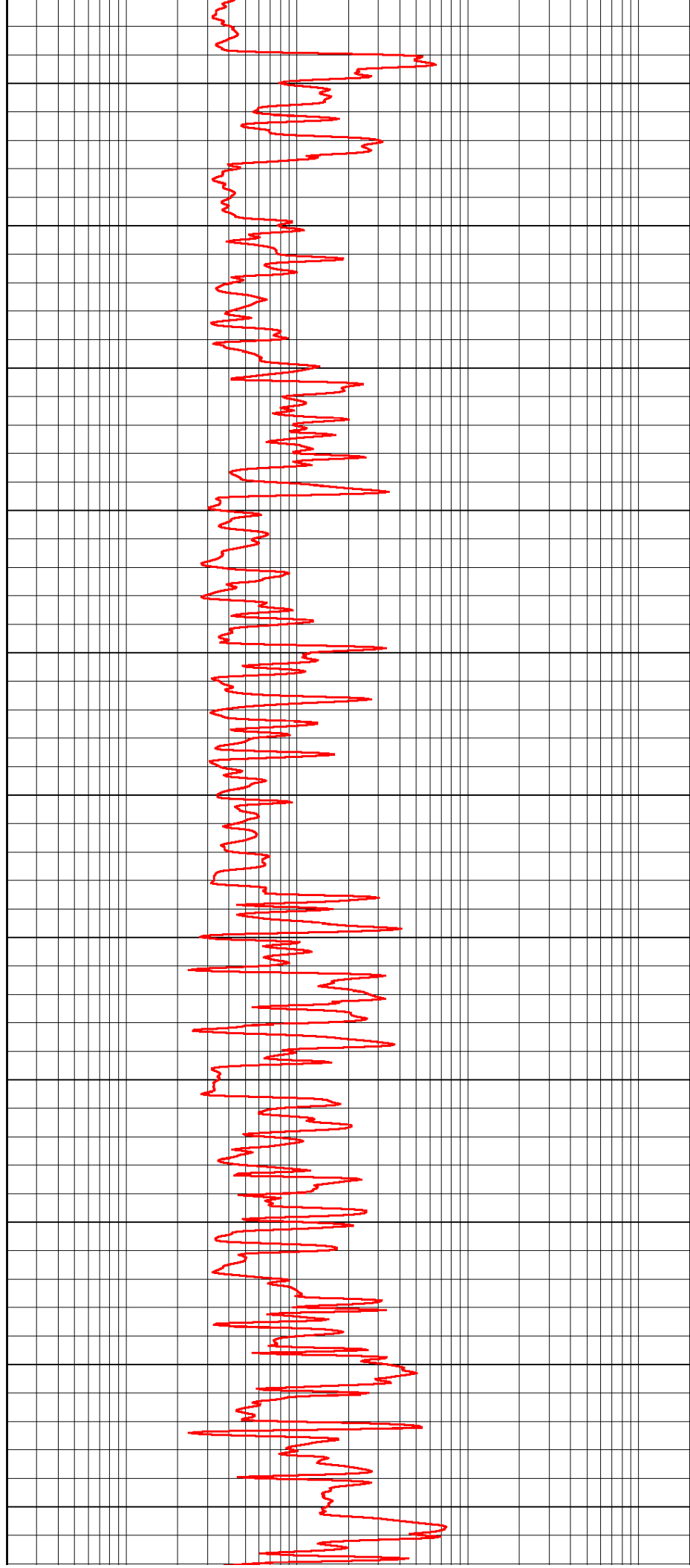
3300

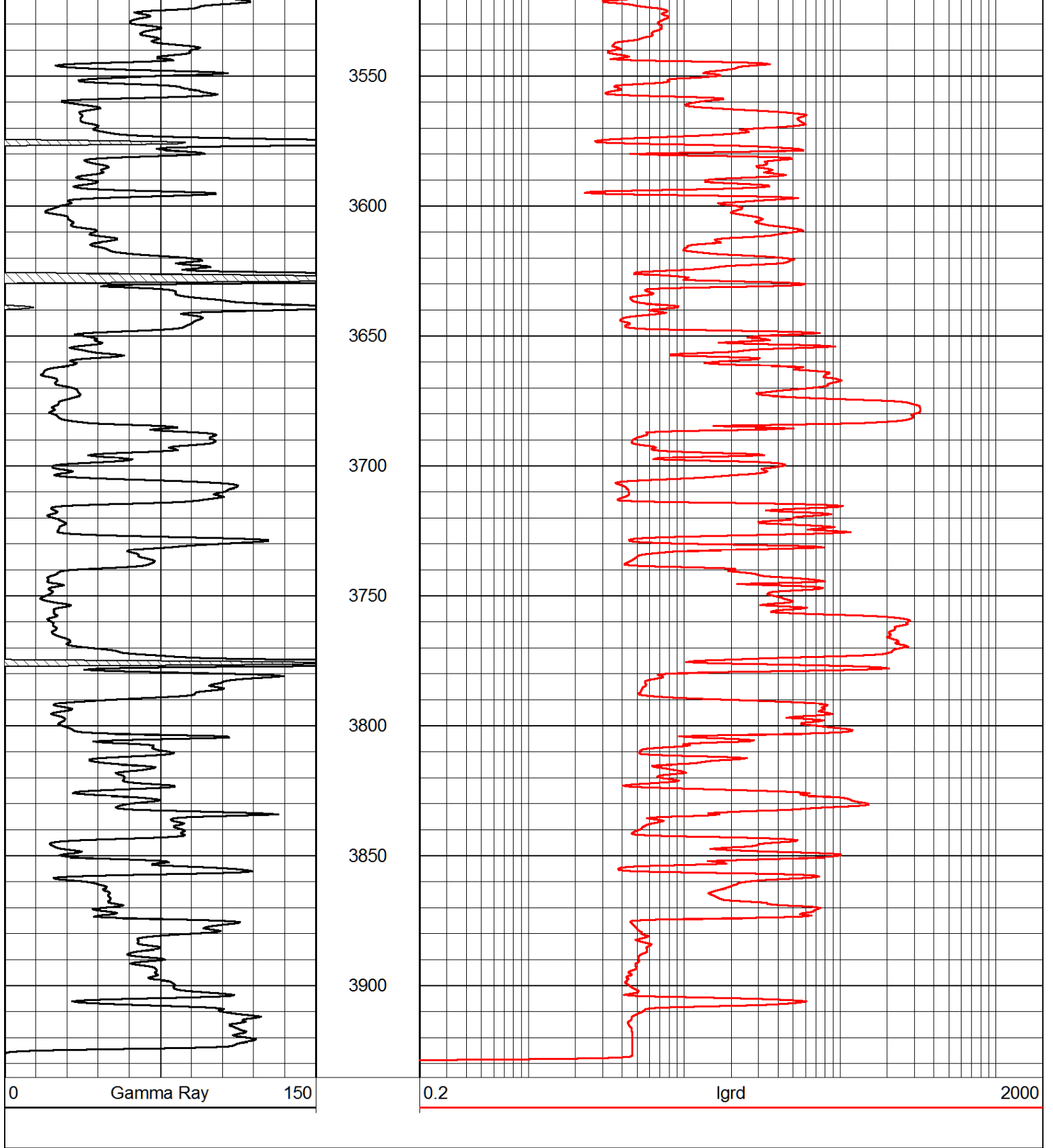
3350

3400

3450

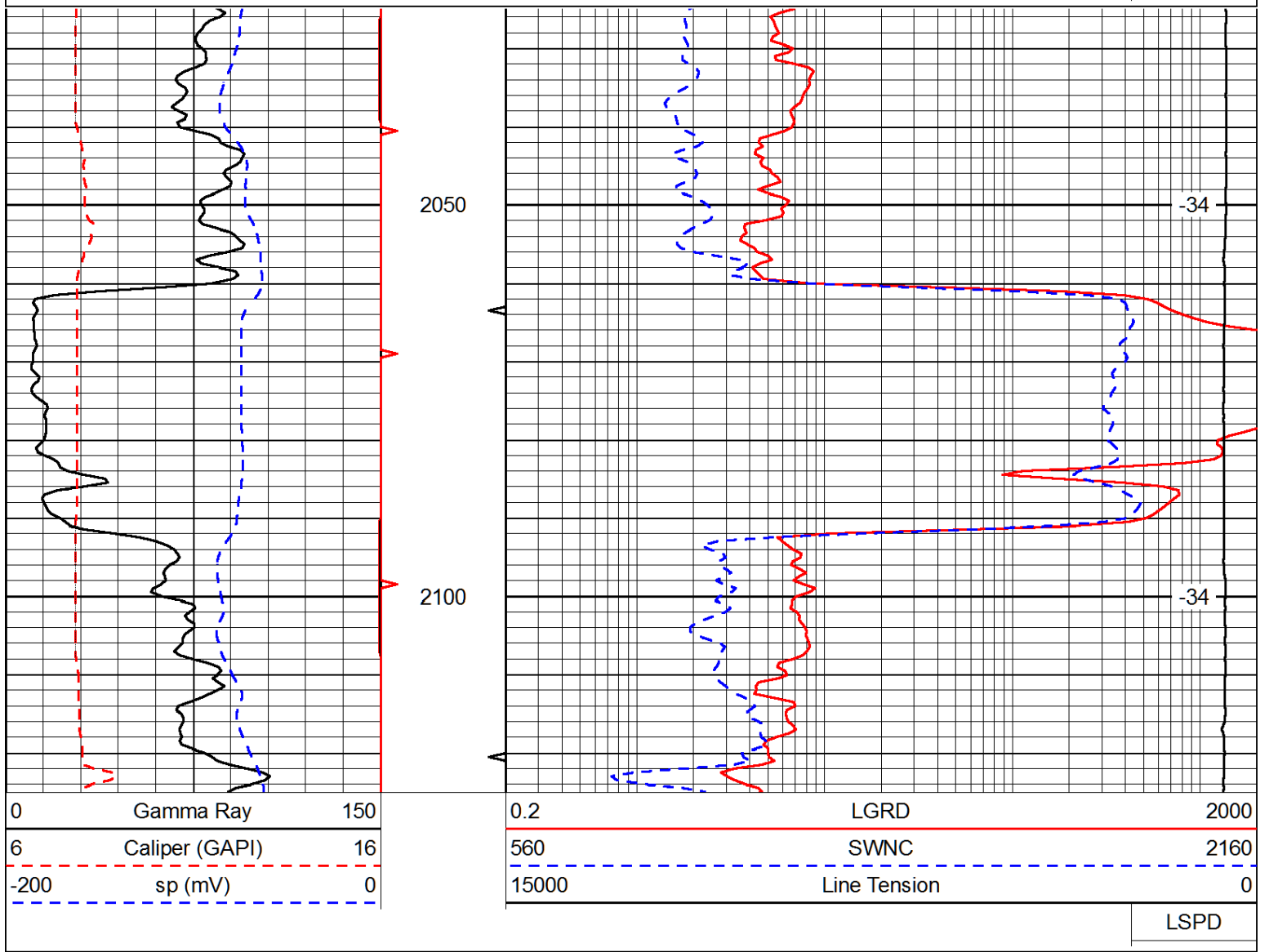
3500





Database File: jason_oil_teel_5hd.db
 Dataset Pathname: rag/jasrag
 Presentation Format: rag
 Dataset Creation: Tue Nov 04 06:31:08 2014
 Charted by: Depth in Feet scaled 1:240

0	Gamma Ray	150	0.2	LGRD	2000
6	Caliper (GAPI)	16	560	SWNC	2160
-200	sp (mV)	0	15000	Line Tension	0



Database File: jason_oil_teel_5hd.db
 Dataset Pathname: rag/jasrag
 Presentation Format: rag
 Dataset Creation: Tue Nov 04 06:31:08 2014
 Charted by: Depth in Feet scaled 1:240

