



**MIDWEST SURVEYS**  
 LOGGING - PERFORATING - CONSULTING SERVICES  
 P.O. Box 68, Osawatomie, KS 66064  
 913 / 785 - 2128

**GAMMA RAY / NEUTRON / CCL**

File No. \_\_\_\_\_

Company **MAE Resources, Inc.**

Well **Martin No. 2-A**

Field **Colony - Welda**

County **Anderson** State **Kansas**

Location **4785' FSL & 3370' FEL**

Other Services **Perforate**

Sec. **29** Twp. **22s** Rge. **19e**

Permament Datum **GL** Elevation **NA**

Log Measured From **GL**

Drilling Measured From **GL**

Date **09-10-2014**

Run Number **One**

Depth Driller **910.0**

Bottom Logged Interval **899.0**

Top Log Interval **20.0**

Fluid Level **Full**

Type Fluid **Water**

Density / Viscosity **NA**

Salinity - PPM Cl **NA**

Max Recorded Temp **NA**

Estimated Cement Top **0.0**

Equipment No. **102** Location **Osawatomie**

Recorded By **Gary Windisch**

Missused By **Brad Cook**

BORE-HOLE RECORD		CASING RECORD	
RUN No.	BIT FROM TO	SIZE FROM TO	WGT. FROM TO
One	9.875' 0.0	7.00" 7.00"	17.0# 0.0
Two	5.925' 20.0	9.10" 2.875"	6.5# 0.0

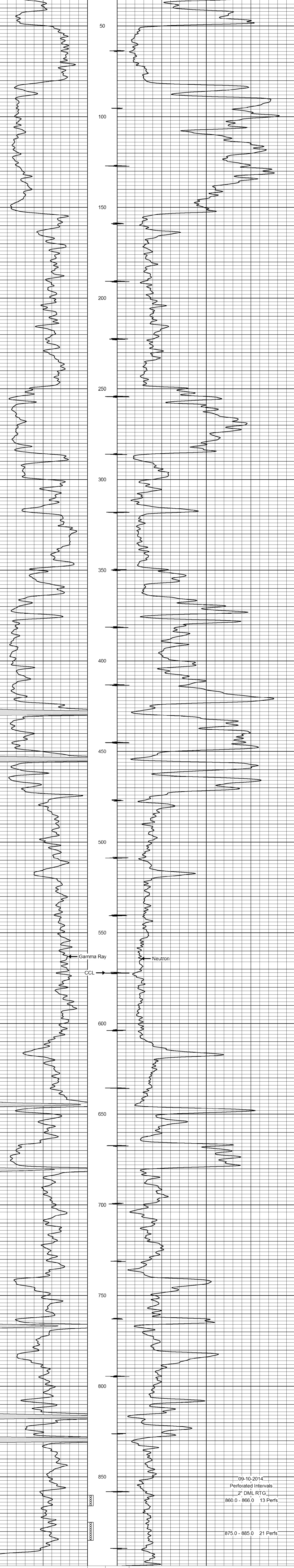
<<< Fold Here >>>

All interpretations are opinions based on inferences from electrical or other measurements and we cannot and do not guarantee the accuracy or correctness of any interpretation, and we shall not, except in the case of gross or willful negligence on our part, be liable or responsible for any loss, costs, damages, or expenses incurred or sustained by anyone resulting from any interpretation made by any of our officers, agents or employees. These interpretations are also subject to our general terms and conditions set out in our current Price Schedule.

**Comments**

Drilling Contractor :  
**Hat Drilling**

Database File: martin2a.db  
 Dataset Pathname: pass1  
 Presentation Format: gr-n-ccl  
 Dataset Creation: Wed Sep 10 09:08:00 2014 by Log SCH 111116  
 Charted by: Depth in Feet scaled 1:240



09-10-2014  
 Perforated Intervals  
 2" DML RTG  
 860.0 - 866.0 13 Perfs  
 875.0 - 885.0 21 Perfs

Gamma Ray (cps)		Neutron (cps)	
0	150	100	1900