



Pioneer Energy Services

## Computer Processed Interpretation

15-065-24,073-00-00

**Company** Jason Oil Company, LLC  
**Well** TEEL No. 5  
**Field** NANA Northwest  
**County** Graham **State** Kansas

Location NE-NW-NE-NE  
 90' FNL & 940' FEL  
 Sec: 5 Twp: 8S Rge: 24W  
 Other Services  
 RAG/MEL

**Permanent Datum** Ground Level Elevation 2388  
**Log Measured From** Kelly Bushing 5 Ft. Above Perm. Datum  
**Drilling Measured From** Kelly Bushing

Elevation  
 K.B. 2393  
 D.F. G.L. 2388

**Date Recorded** 11/4/14

**Depth Logger** 3928

Curve Definitions

**SW** Water Saturation

**SXO** Water Saturation In The Flushed Zone

**VCL** Volume Of Clay

**PHIE** Density - Neutron Crossplot Shale Corrected

**BVW** Bulk Volume Water

**BVWSXO** Bulk Volume Water In Flushed Zone

**DCAL** Caliper

**SPC** SP Corrected For Baseline

**DGA** Apparent Grain Density

**Payflag** If: PHIE> 2, VCL< 40, SPC> -10, SW< 40 & SCAL< 10

**Recorded By** J. Henrickson

**Witnessed By** Jeff Lawler

**Analysis By** T. Martin

<<< Fold Here >>>

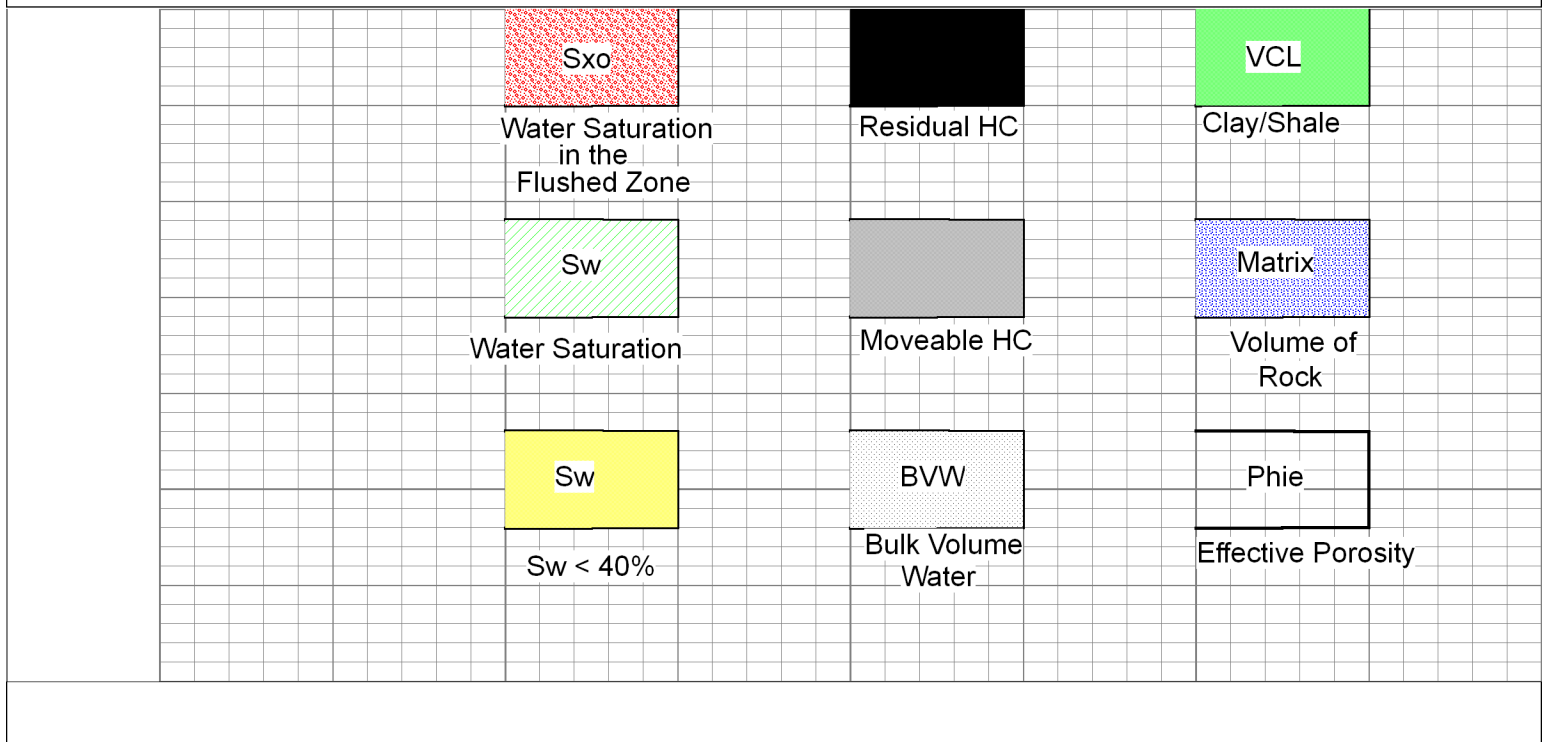
All interpretations are opinions based on inferences from electrical or other measurements and we cannot and do not guarantee the accuracy or correctness of any interpretation, and we shall not, except in the case of gross or willful negligence on our part, be liable or responsible for any loss, costs, damages, or expenses incurred or sustained by anyone resulting from any interpretation made by any of our officers, agents or employees. These interpretations are also subject to our general terms and conditions set out in our current Price Schedule.

### Comments

Thank you for using Log-Tech, Inc.  
www.logtechinc.com

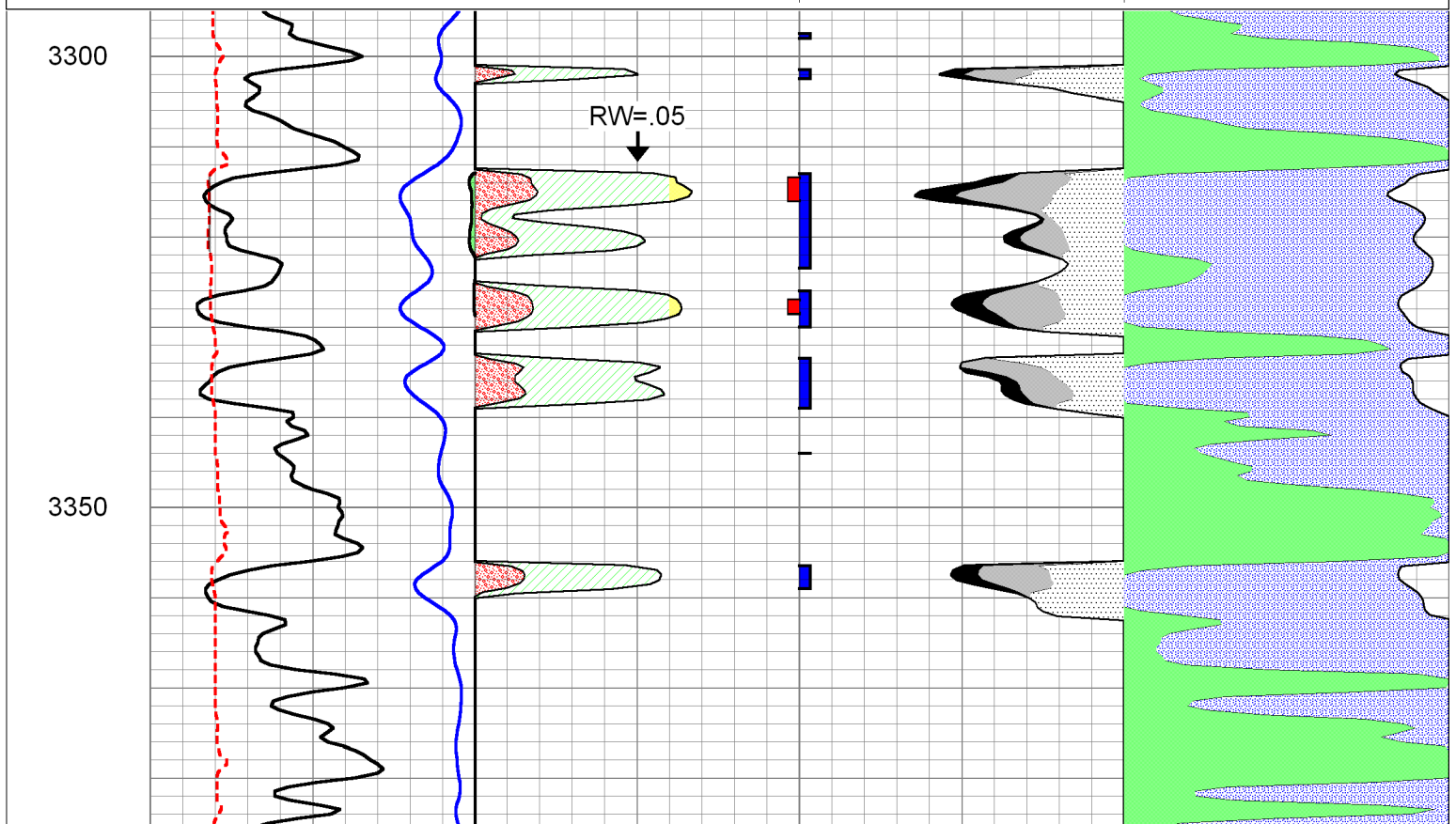
Penokee Kansas  
1 West, 2 North, 1 West, South Into at Tank Batteries

**Database File:** c:\warrior\data\cross plots\1wxplt.db  
**Dataset Pathname:** litho  
**Presentation Format:** 1wxplt  
**Dataset Creation:** Thu Apr 24 14:32:02 1997  
**Charted by:** Depth in Feet scaled 1:240



Database File: jason\_oil\_teel\_5hd.db  
 Dataset Pathname: rag/jascpi  
 Presentation Format: ragcalc  
 Dataset Creation: Tue Nov 04 09:07:02 2014  
 Charted by: Depth in Feet scaled 1:240

0	Gamma Ray	150	1	SW	0	0.3	PHIE	0	0	VCL	1
6	SCAL (GAPI)	16	30	PAYFLAG	0	0.3	BVW	0	1	PHIE	0
-150	SPC (mV)	0	1	SXO	0	0	PERM	30			
						0.3	BVWSXO	0			



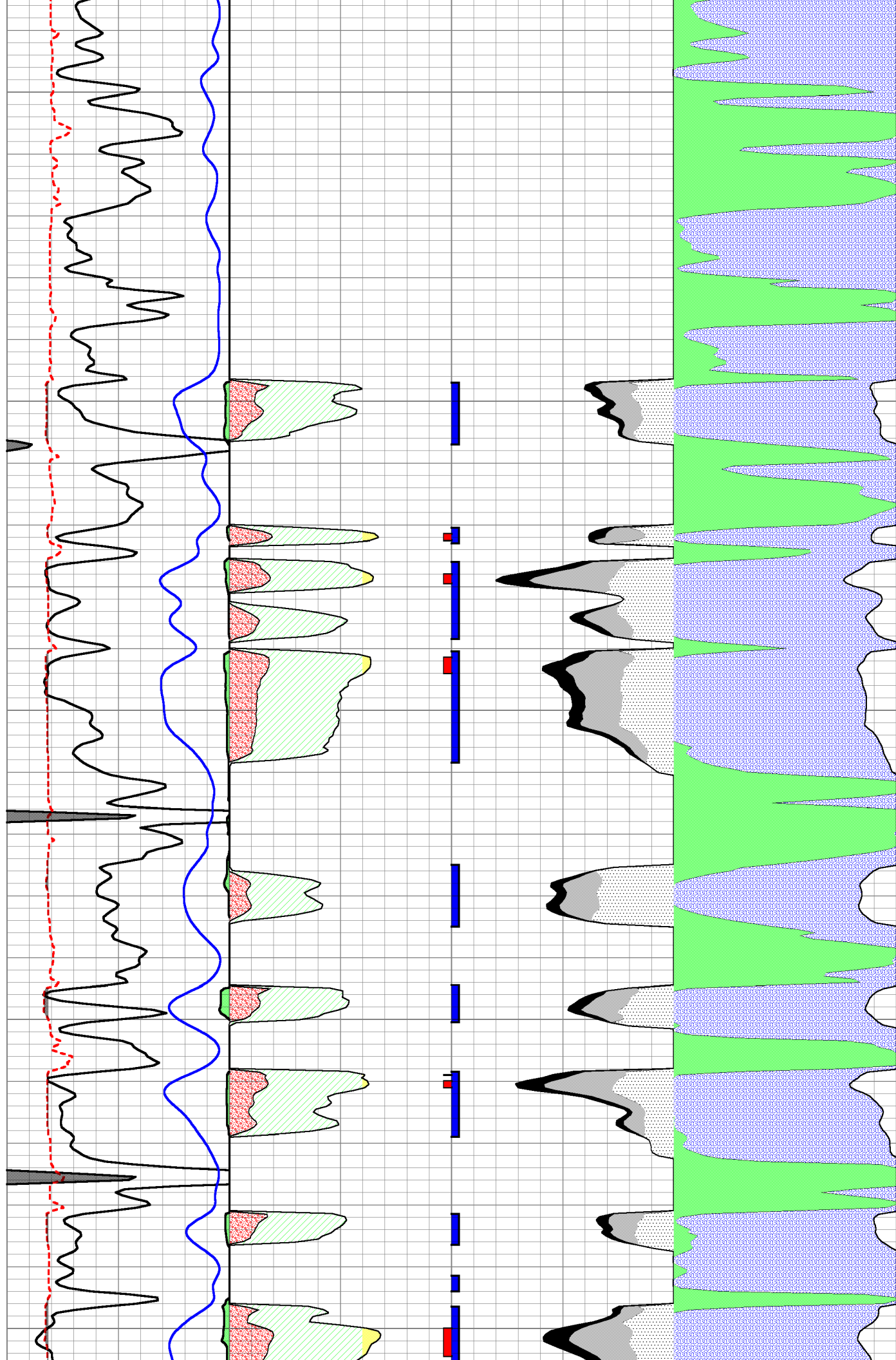
3400

3450

3500

3550

3600

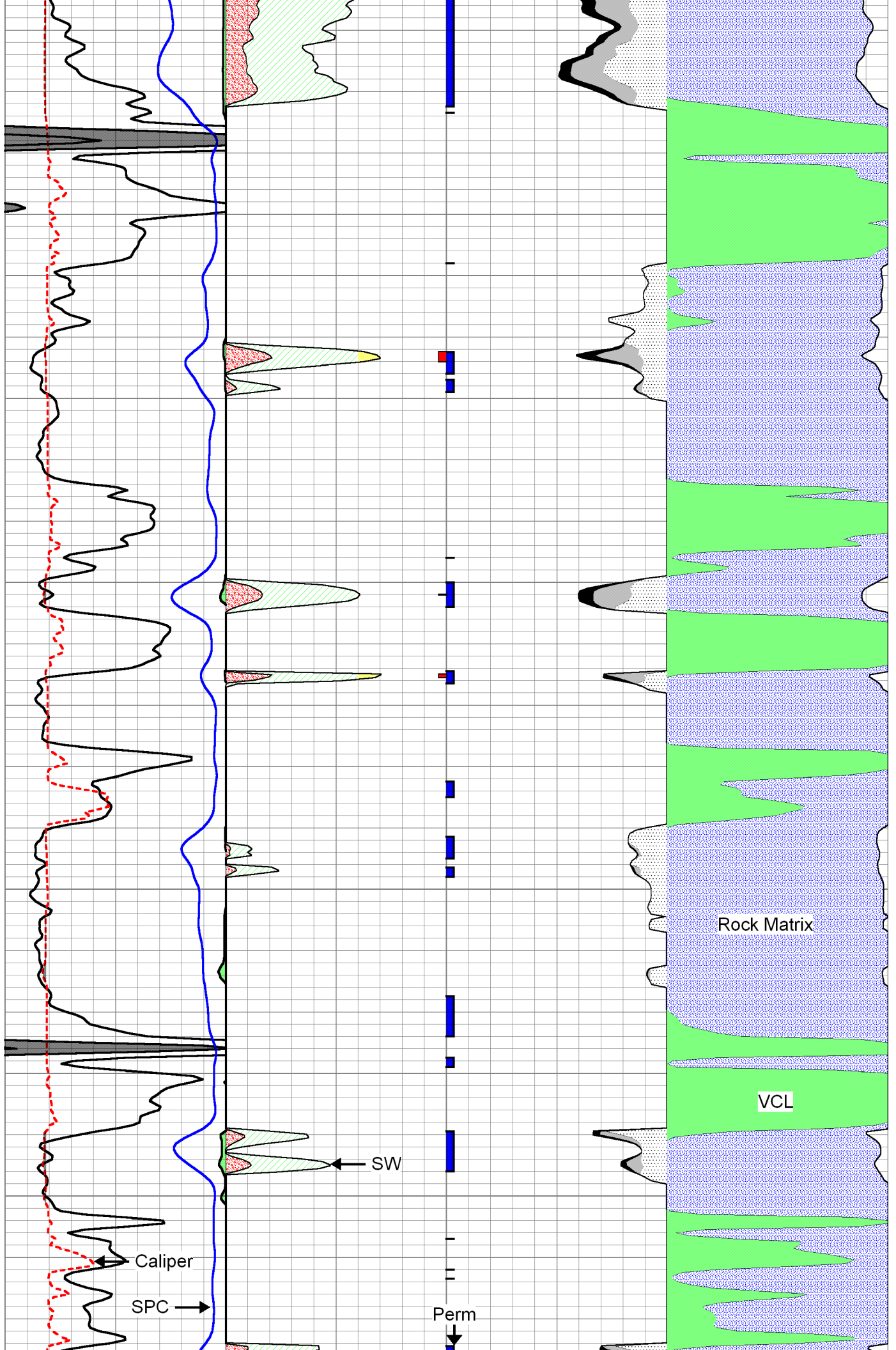


3650

3700

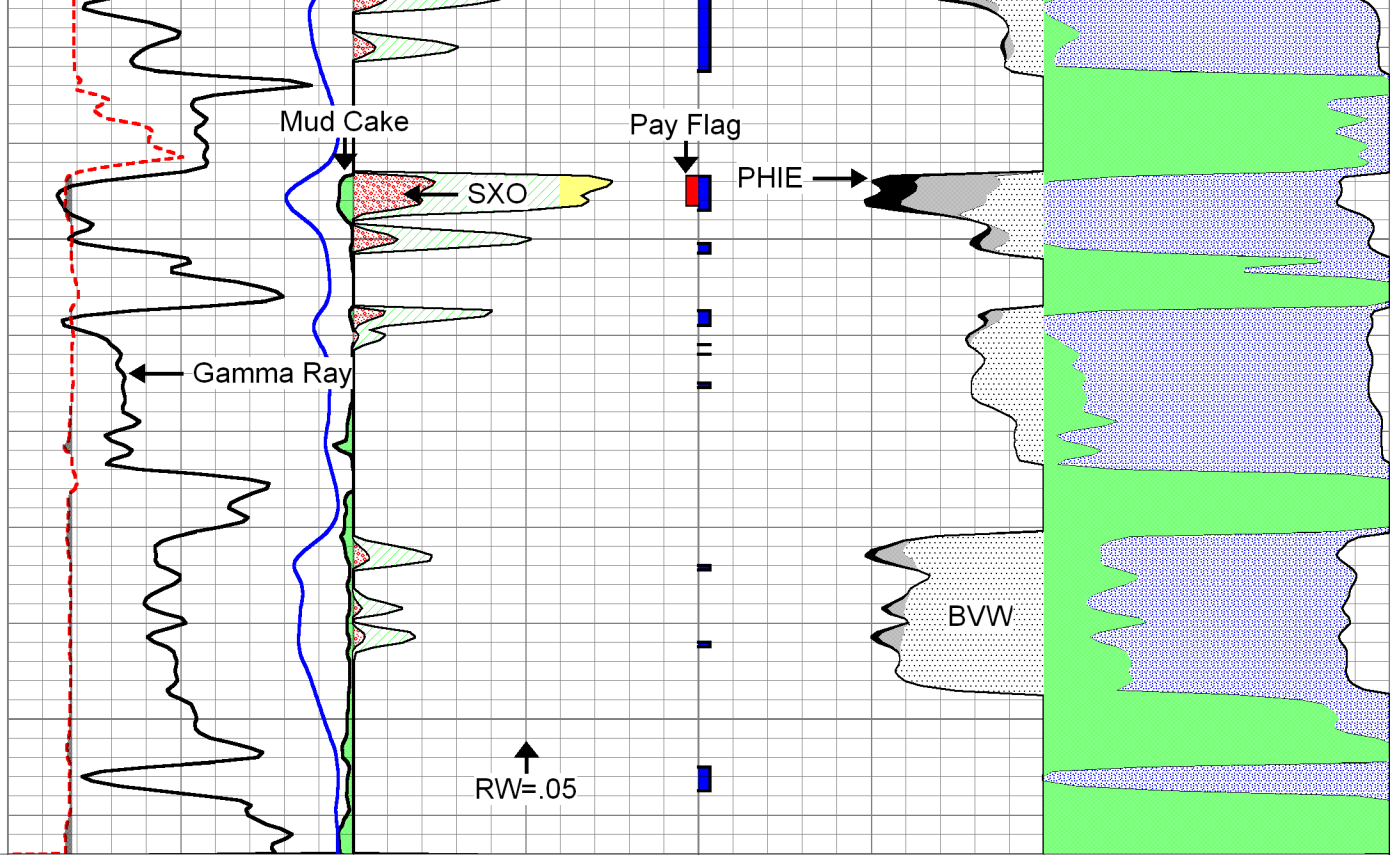
3750

3800



3850

3900



RW=.05

0	Gamma Ray	150	1	SW	0	0.3	PHIE	0	0	VCL	1
6	SCAL (GAPI)	16	30	PAYFLAG	0	0.3	BVW	0	1	PHIE	0
-150	SPC (mV)	0	1	SXO	0	0	PERM	30			
						0.3	BVWSXO	0			